

# 在WLC 5760/3850上配置Web傳輸

## 目錄

[簡介](#)

[必要條件](#)

[需求](#)

[採用元件](#)

[無線LAN控制器上的Web傳輸](#)

[設定](#)

[使用CLI進行配置](#)

[使用GUI進行配置](#)

[客戶端示例](#)

[驗證](#)

[疑難排解](#)

## 簡介

本檔案介紹如何在無線LAN控制器(WLC)上設定Web傳輸功能。

## 必要條件

### 需求

本檔案假設已在WLC上完成初始設定。

### 採用元件

本文中的資訊係根據以下軟體和硬體版本：

- 執行3.3版程式碼的5760 WLC
- Cisco Aironet 3600系列輕量型存取點
- Microsoft Windows 7本機無線請求方

本文中的資訊是根據特定實驗室環境內的裝置所建立。文中使用到的所有裝置皆從已清除（預設）的組態來啟動。如果您的網路正在作用，請確保您已瞭解任何指令可能造成的影響。

## 無線LAN控制器上的Web傳輸

Web傳輸是一種通常用於訪客訪問的解決方案。Web傳輸過程與Web身份驗證類似，不同之處在於Web傳輸不需要身份驗證憑證。

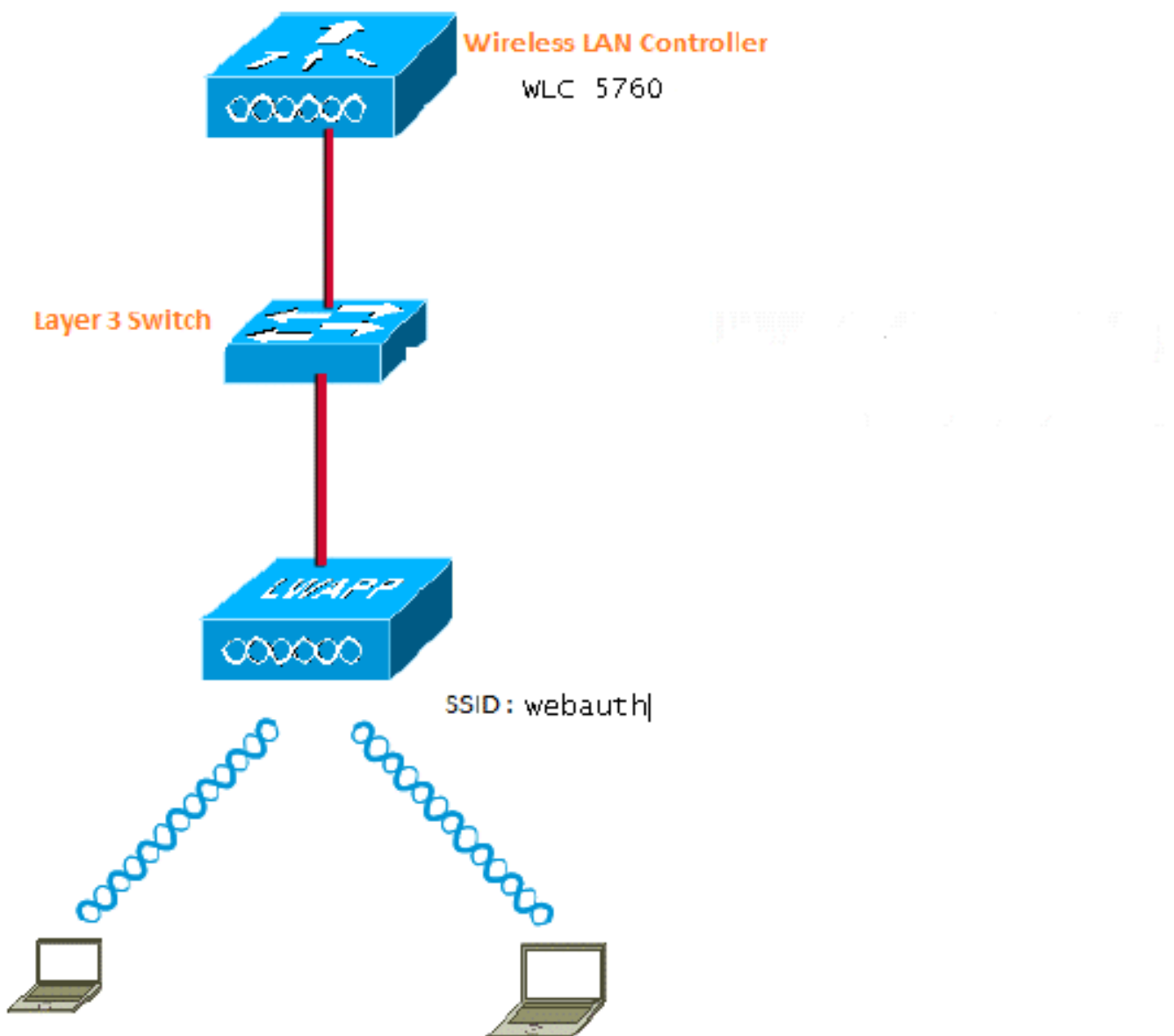
在Web傳輸中，無線使用者第一次嘗試使用Internet時，將被重定向到使用策略頁面。使用者接受策略後，即可瀏覽Internet。此重新導向至原則頁面由WLC處理。

在本範例中，在WLC上的獨立子網中建立一個VLAN介面。然後，會建立一個獨立的無線LAN(WLAN)/服務組識別碼(SSID)，並使用Web傳輸進行設定，且會將其對應到此VLAN介面。

**附註：** Web傳輸不提供任何資料加密。

## 設定

以下是網路圖表：



您可以使用CLI或GUI完成此設定。

## 使用CLI進行配置

為用於客戶端的VLAN配置DHCP監聽。在本例中，客戶端使用VLAN20。池是在同一個WLC上設定的。

WLC 5760的TenGigabitEthernet1/0/1連線到上行鏈路交換機。如果您在WLC之外的伺服器或外部DHCP伺服器上配置了DHCP伺服器，則必須信任DHCP監聽和中繼資訊。

```
ip device tracking
ip dhcp snooping vlan 12,20,30,40
ip dhcp snooping
!
ip dhcp pool vlan20
 network 20.20.20.0 255.255.255.0
 default-router 20.20.20.1

interface Vlan20
 ip address 20.20.20.1 255.255.255.0

interface TenGigabitEthernet1/0/1
 switchport trunk native vlan 12
 switchport mode trunk
 ip dhcp relay information trusted
 ip dhcp snooping trust

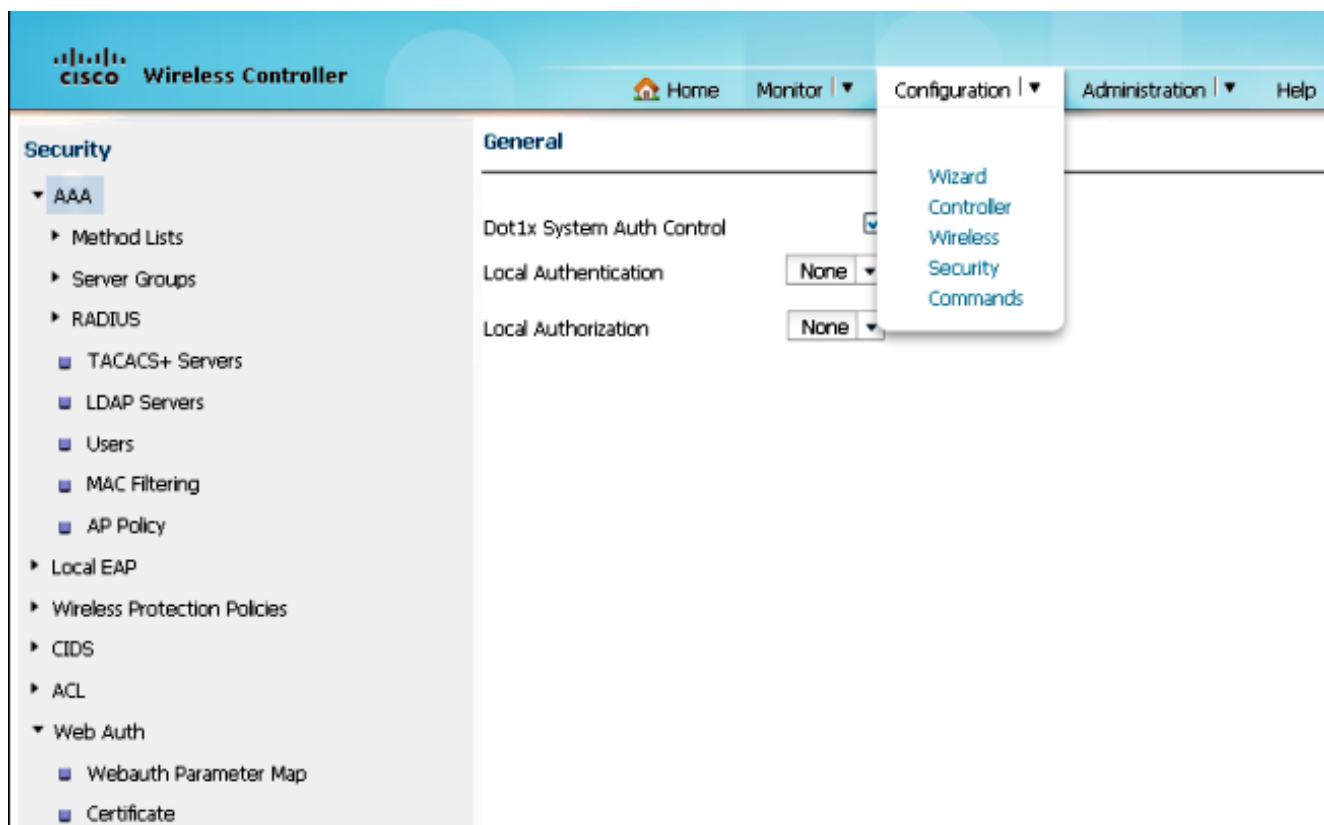
parameter-map type webauth global
 type consent
 virtual-ip ipv4 192.168.200.1
!
!
parameter-map type webauth web
 type consent

wlan Webauth 9 Webauth
 client vlan VLAN0020
 no security wpa
 no security wpa akm dot1x
 no security wpa wpa2
 no security wpa wpa2 ciphers aes
 security web-auth
 security web-auth parameter-map web
 session-timeout 1800
```

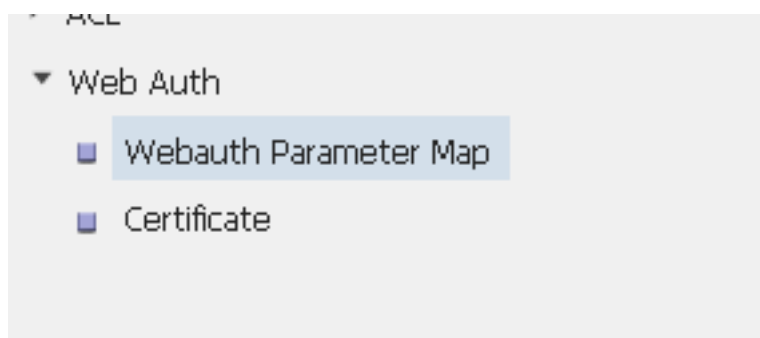
## 使用GUI進行配置

完成這些步驟，以便在GUI上配置。

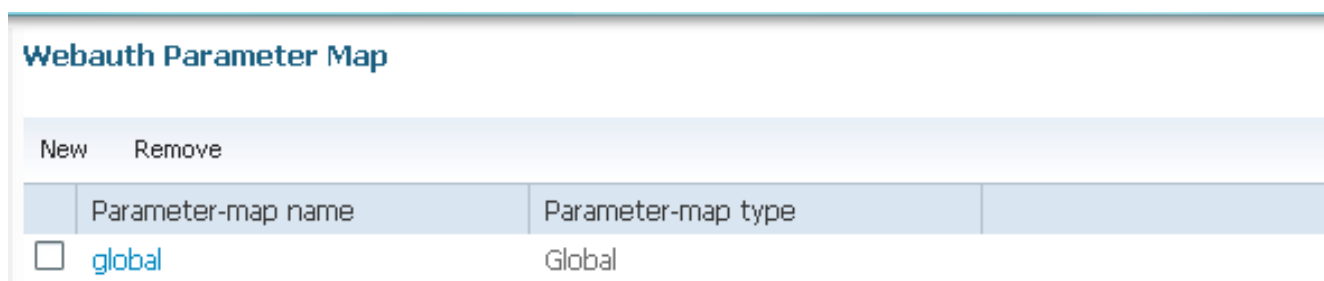
1. 在WLC GUI中，導覽至Configuration > Security:



2. 在Security頁面右下角，導覽至Webauth > Webauth Parameter Map:



3. 為預設引數對映選擇global:




4. 導覽至Webauth Parameter Map > Edit，以設定虛擬IP位址。在本例中為192.169.200.1。將「型別」更改為consent，以便全域性引數變為consent ( Web傳遞 )。

**附註：** 將全域性引數對映配置為consent不是強制性的。

## Webauth Parameter Map


Webauth Parameter Map > Edit

|                                 |  |
|---------------------------------|--|
| Parameter-map name              | global   |
| Banner                          |  |
| Maximum HTTP connections(1-200) | <input type="text" value="30"/>  |
| Timeout (1-65535 in minutes)    | <input type="text" value="2"/>   |
| Type                            | <input type="text" value="consent"/>   |
| Turn-on Consent with Email      | <input type="checkbox"/>   |
| Virtual IPv4 Address            | <input type="text" value="192.168.200.1"/>   |
| Virtual IPv4 hostname           | <input type="text"/>   |

5. 建立引數對映，然後為**型別**選擇同意。此範例使用web作為引數對映名稱，該名稱在WLAN下使用，以便使用者存取同意頁面。

## Webauth Parameter Map

Webauth Parameter Map > Edit

|                                 |  |
|---------------------------------|--|
| Parameter-map name              | web  |
| Banner                          |  |
| Maximum HTTP connections(1-200) | <input type="text" value="30"/>  |
| Timeout (1-65535 in minutes)    | <input type="text" value="2"/>   |
| Type                            | <input type="text" value="consent"/>   |
| Turn-on Consent with Email      | <input type="checkbox"/>   |

以下是GUI上引數對映的螢幕截圖：

### Webauth Parameter Map

New Remove

|                          | Parameter-map name | Parameter-map type |
|--------------------------|--------------------|--------------------|
| <input type="checkbox"/> | global             | Global             |
| <input type="checkbox"/> | web                | Named              |

6. 在WLC GUI中，導覽至**Configuration > Wireless > WLAN**，以便建立新的WLAN。此範例將**Webauth**作為WLAN對應到**VLAN20**:

### WLAN

WLAN > Edit

General Security QOS AVC Advanced

Profile Name Webauth

Type WLAN

SSID Webauth

Status

Security Policies Web-Auth  
(Modifications done under security tab will appear after applying the changes.)

Radio Policy All

Interface/Interface Group(G) VLAN0020

Broadcast SSID

Multicast VLAN Feature

7. 導覽至**WLAN > Edit > Security > Layer2**，然後為Layer 2 Security選擇**None**:

### WLAN

WLAN > Edit

General Security QOS AVC Advanced

Layer2 Layer3 AAA Server

Layer 2 Security None

MAC Filtering

Fast Transition

Over the DS

Reassociation Timeout 20

8. 導覽至WLAN > Edit > Security > Layer3，然後為Webauth Parameter Map選擇適當的設定。在本例中，它是web。

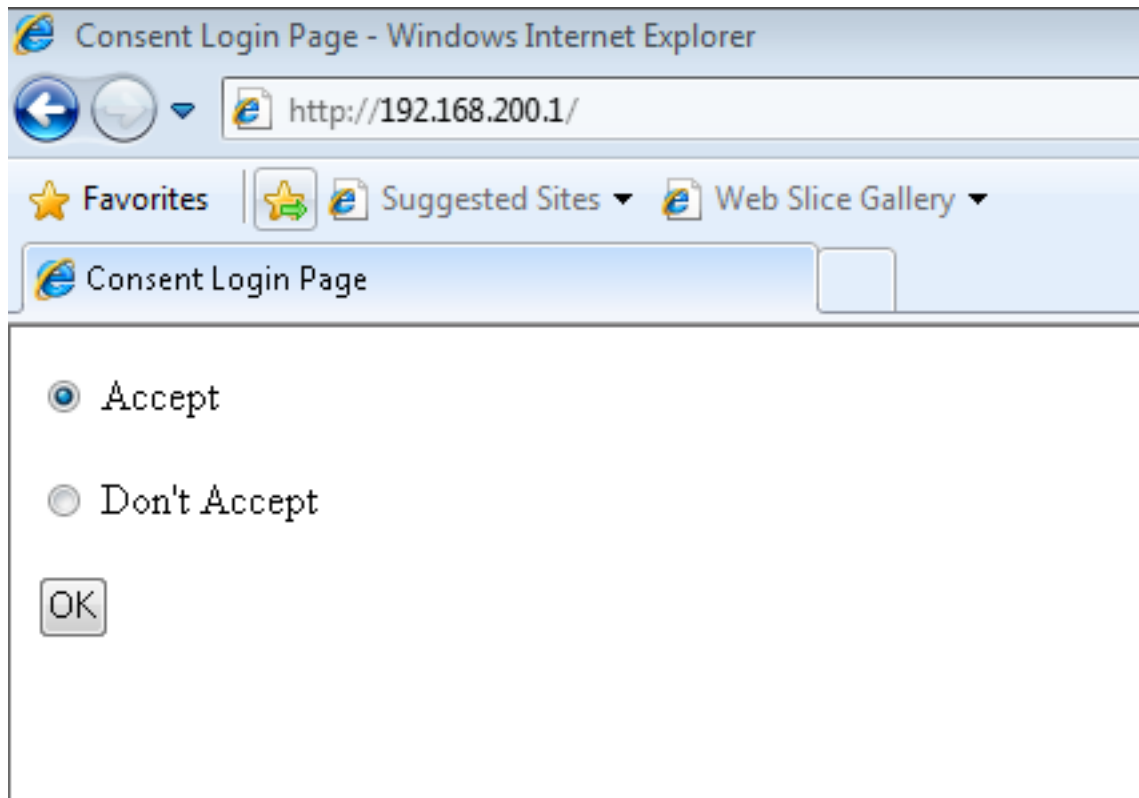
The screenshot shows the configuration page for WLAN. The breadcrumb is WLAN > Edit. There are five tabs: General, Security, QOS, AVC, and Advanced. Under the Security tab, there are three sub-tabs: Layer2, Layer3, and AAA Server. The Layer3 sub-tab is active. The configuration items are as follows:

|                               |                                     |
|-------------------------------|-------------------------------------|
| Web Policy                    | <input checked="" type="checkbox"/> |
| Conditional Web Redirect      | <input type="checkbox"/>            |
| Webauth Profile               | Local_webauth                       |
| Webauth Parameter Map         | web                                 |
| Webauth On-mac-filter Failure | <input type="checkbox"/>            |
| Preauthentication IPv4 ACL    | Unconfigured                        |
| Preauthentication IPv6 ACL    | Unconfigured                        |

9. 儲存配置，即可進行測試。

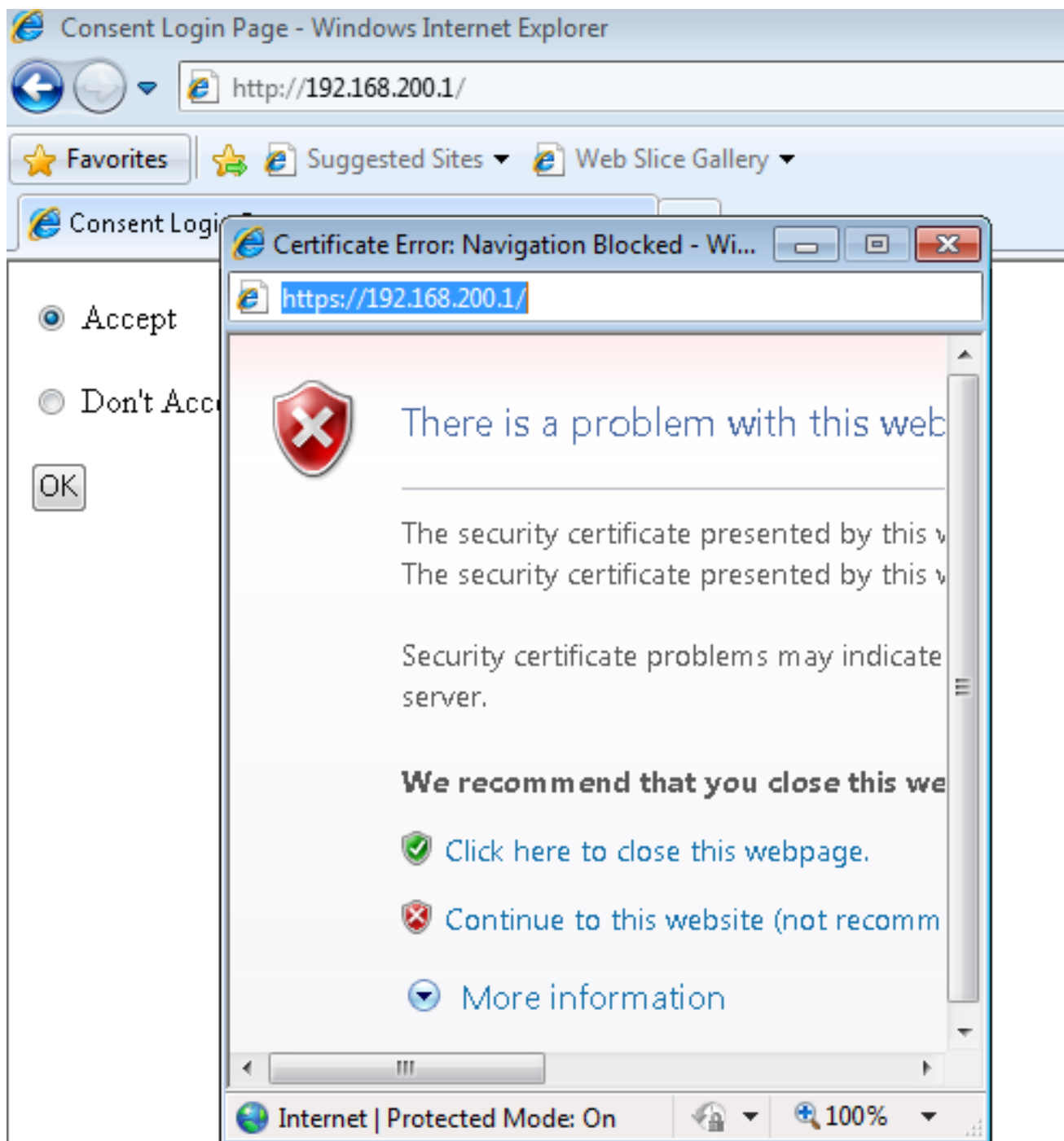
10. 連線到WLAN後，使用者端會收到IP位址。當您嘗試使用虛擬IP地址開啟瀏覽器時，會顯示 **Consent Login Page**，您必須按一下**Accept**單選按鈕。

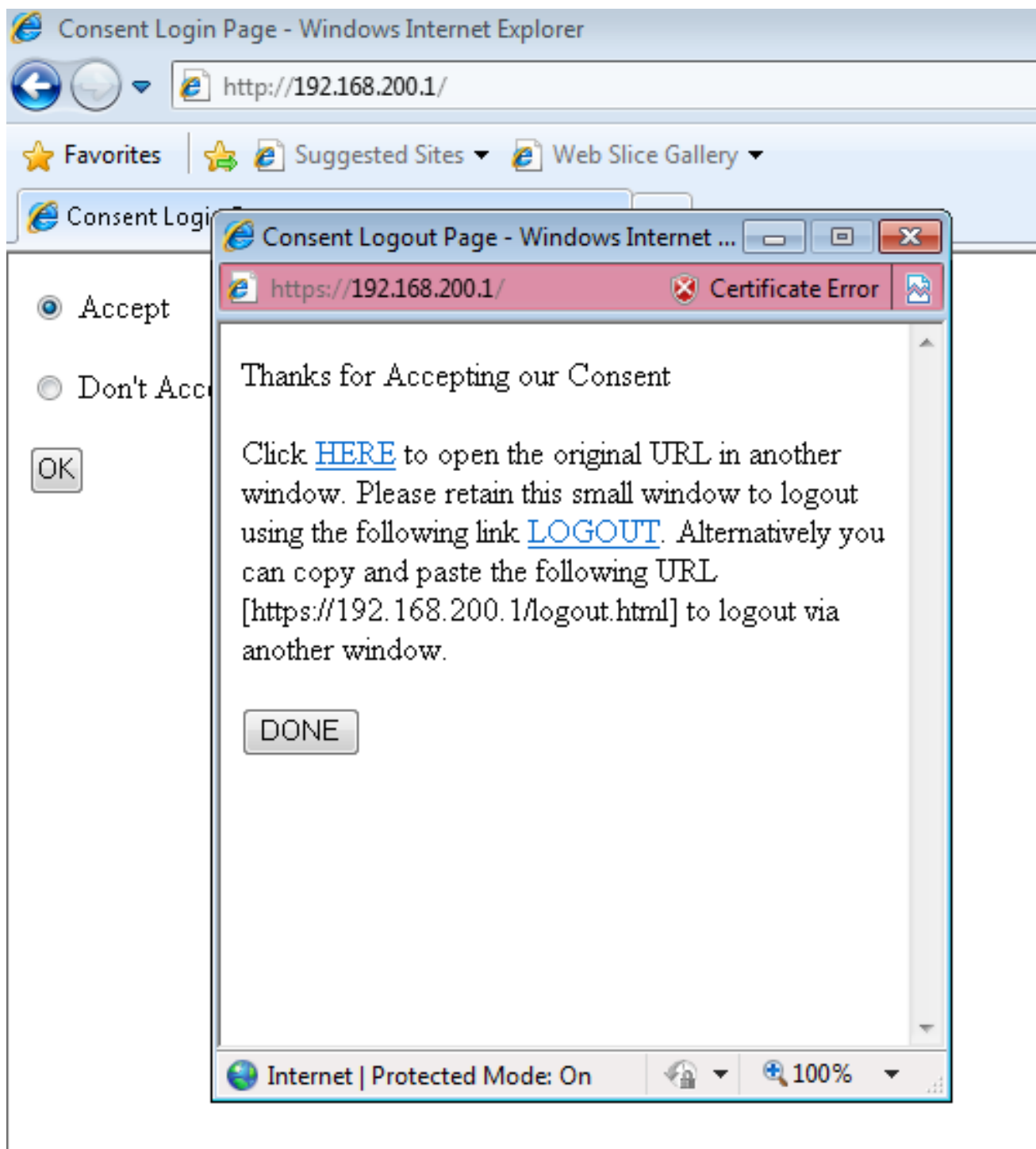
**附註：**如果您有有效的網域名稱伺服器(DNS)組態，就不需要在瀏覽器上手動輸入虛擬IP位址。



11. 按一下**Accept**後，將啟動成功的身份驗證頁面，該頁面允許您導航到請求的頁面。







## 客戶端示例

以下是客戶端收到DHCP時從客戶端筆記型電腦捕獲的資料包：

| No. | Time               | Source     | Destination     | Protocol | Length | Source Port | Destination Port | Info                                     |
|-----|--------------------|------------|-----------------|----------|--------|-------------|------------------|--|
| 1   | 09:35:55.540590000 | 0.0.0.0    | 255.255.255.255 | DHCP     | 346    | 68          | 67               | DHCP Request - Transaction ID 0xd73023c4 |
| 2   | 09:35:55.546600000 | 20.20.20.1 | 20.20.20.6      | DHCP     | 342    | 67          | 68               | DHCP ACK - Transaction ID 0xd73023c4     |

客戶端收到IP地址後，開啟瀏覽器並鍵入虛擬IP地址。

**附註：**如果DNS配置正確，則無需在瀏覽器中輸入虛擬IP地址。

|     |                    |                                |               |         |      |     |   |
|-----|--------------------|--------------------------------|---------------|---------|------|-----|---|
| 162 | 09:36:09.57004000  | 20.20.20.6                     | 20.20.20.255  | BROWSER | 220  | 138 | 138 Request Announcement CALO-PC                                  |
| 163 | 09:36:09.680160000 | 20.20.20.6                     | 192.168.200.1 | TCP     | 66   |     | 50128 > http [SYN] Seq=0 Wln=8192 Len=0 MSS=1460 WS=4 SACK_PERM=1 |
| 164 | 09:36:09.684532000 | 192.168.200.1                  | 20.20.20.6    | TCP     | 60   |     | http > 50128 [SYN, ACK] Seq=0 Ack=1 Wln=8128 Len=0 MSS=1460       |
| 165 | 09:36:09.684634000 | 20.20.20.6                     | 192.168.200.1 | TCP     | 54   |     | 50128 > http [ACK] Seq=1 Ack=1 Wln=64240 Len=0                    |
| 166 | 09:36:09.692903000 | 20.20.20.6                     | 192.168.200.1 | HTTP    | 462  |     | GET / HTTP/1.1  |
| 167 | 09:36:09.701041000 | 192.168.200.1                  | 20.20.20.6    | TCP     | 1514 |     | [TCP segment of a reassembled PDU]                                |
| 168 | 09:36:09.913060000 | 20.20.20.6                     | 192.168.200.1 | TCP     | 54   |     | 50128 > http [ACK] Seq=409 Ack=1461 Wln=64240 Len=0               |
| 169 | 09:36:09.92031000  | 192.168.200.1                  | 20.20.20.6    | HTTP    | 234  |     | HTTP/1.0 200 OK (text/html)                                       |
| 170 | 09:36:09.920862000 | 192.168.200.1                  | 20.20.20.6    | TCP     | 60   |     | http > 50128 [FIN, PSH, ACK] Seq=1641 Ack=409 Wln=3720 Len=0      |
| 171 | 09:36:09.920918000 | 20.20.20.6                     | 192.168.200.1 | TCP     | 54   |     | 50128 > http [ACK] Seq=409 Ack=1642 Wln=64060 Len=0               |
| 172 | 09:36:09.921315000 | 20.20.20.6                     | 192.168.200.1 | TCP     | 54   |     | 50128 > http [FIN, ACK] Seq=409 Ack=1642 Wln=64060 Len=0          |
| 173 | 09:36:09.924874000 | 192.168.200.1                  | 20.20.20.6    | TCP     | 60   |     | http > 50128 [ACK] Seq=1642 Ack=410 Wln=3720 Len=0                |
| 174 | 09:36:10.630917000 | Fe80::11096:8168:c7df:f02::112 |               | DHCPv6  | 349  | 546 | 547 socket xdr: 0x9c330 cid: 0001000118e580a6027136531f6          |

```

Internet Protocol version 4, Src: 20.20.20.6 (20.20.20.6), Dst: 1
Transmission Control Protocol, Src Port: 50128 (50128), Dst Port:
Hypertext Transfer Protocol
  GET / HTTP/1.1\r\n
  Accept: image/jpeg, application/x-ms-application, image/gif, ap
  Accept-Language: en-US\r\n
  User-Agent: Mozilla/4.0 (compatible; MSIE 8.0; windows NT 6.1;
  Accept-Encoding: gzip, deflate\r\n
  Host: 192.168.200.1\r\n
  Connection: Keep-Alive\r\n
  \r\n
  [Full request URI: http://192.168.200.1/]
  [HTTP request 1/1]
  [Response in frame: 169]

```

由於此組態不使用任何webauth憑證，因此此封包擷取中存在CERT錯誤：

|     |                    |               |               |       |      |  |  |
|-----|--------------------|---------------|---------------|-------|------|--|--|
| 194 | 09:36:14.096708000 | 20.20.20.6    | 192.168.200.1 | TCP   | 66   |  | 50130 > https [SYN] Seq=0 Wln=8192 Len=0 MSS=1460 WS=4 SACK_PERM=1   |
| 195 | 09:36:14.096706000 | 192.168.200.1 | 20.20.20.6    | TCP   | 60   |  | https > 50130 [SYN, ACK] Seq=0 Ack=1 Wln=8128 Len=0 MSS=1460         |
| 196 | 09:36:14.096802000 | 20.20.20.6    | 192.168.200.1 | TCP   | 54   |  | 50130 > https [ACK] Seq=1 Ack=1 Wln=64240 Len=0                      |
| 197 | 09:36:14.091283000 | 20.20.20.6    | 192.168.200.1 | SSLv3 | 142  |  | Client hello   |
| 198 | 09:36:14.096903000 | 192.168.200.1 | 20.20.20.6    | SSLv3 | 739  |  | Server hello, Certificate, Server Hello Done                         |
| 199 | 09:36:14.097876000 | 20.20.20.6    | 192.168.200.1 | SSLv3 | 262  |  | Client key exchange, Change Cipher Spec, Encrypted Handshake Message |
| 200 | 09:36:14.107044000 | 192.168.200.1 | 20.20.20.6    | SSLv3 | 125  |  | Change Cipher Spec, Encrypted Handshake Message                      |
| 201 | 09:36:14.117824000 | 20.20.20.6    | 192.168.200.1 | TCP   | 54   |  | 50130 > https [FIN, ACK] Seq=297 Ack=757 Wln=63484 Len=0             |
| 202 | 09:36:14.119365000 | 20.20.20.6    | 192.168.200.1 | TCP   | 66   |  | 50131 > https [SYN] Seq=0 Wln=8192 Len=0 MSS=1460 WS=4 SACK_PERM=1   |
| 203 | 09:36:14.125083000 | 192.168.200.1 | 20.20.20.6    | TCP   | 60   |  | https > 50130 [ACK] Seq=757 Ack=298 Wln=3832 Len=0                   |
| 204 | 09:36:14.125191000 | 192.168.200.1 | 20.20.20.6    | TCP   | 60   |  | https > 50130 [FIN, PSH, ACK] Seq=757 Ack=298 Wln=3832 Len=0         |
| 205 | 09:36:14.125245000 | 20.20.20.6    | 192.168.200.1 | TCP   | 54   |  | 50130 > https [ACK] Seq=298 Ack=759 Wln=63484 Len=0                  |
| 206 | 09:36:14.125447000 | 192.168.200.1 | 20.20.20.6    | TCP   | 60   |  | https > 50131 [SYN, ACK] Seq=0 Ack=1 Wln=8128 Len=0 MSS=1460         |
| 207 | 09:36:14.125506000 | 20.20.20.6    | 192.168.200.1 | TCP   | 54   |  | 50131 > https [ACK] Seq=1 Ack=1 Wln=64240 Len=0                      |
| 208 | 09:36:14.126314000 | 20.20.20.6    | 192.168.200.1 | SSLv3 | 142  |  | Client hello   |
| 209 | 09:36:14.132508000 | 192.168.200.1 | 20.20.20.6    | SSLv3 | 739  |  | Server hello, Certificate, Server Hello Done                         |
| 210 | 09:36:14.133515000 | 20.20.20.6    | 192.168.200.1 | SSLv3 | 262  |  | Client key exchange, Change Cipher Spec, Encrypted Handshake Message |
| 211 | 09:36:14.142340000 | 192.168.200.1 | 20.20.20.6    | SSLv3 | 125  |  | Change Cipher Spec, Encrypted Handshake Message                      |
| 212 | 09:36:14.152330000 | 20.20.20.6    | 192.168.200.1 | SSLv3 | 633  |  | Application data   |
| 213 | 09:36:14.160281000 | 192.168.200.1 | 20.20.20.6    | TCP   | 1514 |  | [TCP segment of a reassembled PDU]                                   |
| 214 | 09:36:14.166494000 | 192.168.200.1 | 20.20.20.6    | SSLv3 | 186  |  | Application data   |
| 215 | 09:36:14.166546000 | 20.20.20.6    | 192.168.200.1 | TCP   | 54   |  | 50131 > https [ACK] Seq=376 Ack=2350 Wln=64240 Len=0                 |
| 216 | 09:36:14.167248000 | 20.20.20.6    | 192.168.200.1 | TCP   | 54   |  | 50131 > https [FIN, ACK] Seq=876 Ack=2350 Wln=64240 Len=0            |
| 217 | 09:36:14.172153000 | 192.168.200.1 | 20.20.20.6    | TCP   | 60   |  | https > 50131 [ACK] Seq=2350 Ack=877 Wln=3253 Len=0                  |

成功驗證後，使用者端在WLC GUI上處於RUN狀態。

## Client

Client > Detail

General

AVC Statistics

### ▼ Client Properties

|                             |                                       |
|-----------------------------|---------------------------------------|
| Mac Address                 | 00:21:6A:89:51:CA                     |
| IPv4 Address                | 20.20.20.6                            |
| IPv6 Address                | None                                  |
| User Name                   | 0021.6a89.51ca                        |
| Port Number                 | 1                                     |
| Interface                   | VLAN0020                              |
| Vlan ID                     | 20                                    |
| COX Version                 | 4                                     |
| E2E Version                 | 1                                     |
| Mobility State              | Local                                 |
| Policy Manager State        | RUN                                   |
| Management Frame Protection | Disabled                              |
| Uptime(sec)                 | 33                                    |
| Power Save Mode             | OFF                                   |
| Current TxRateSet           | None                                  |
| Data RateSet                | 6.0,9.0,12.0,18.0,24.0,36.0,48.0,54.0 |

### ▼ AP Properties

|                          |                   |
|--------------------------|-------------------|
| AP Address               | C8:F9:F9:83:42:60 |
| AP Name                  | SURBG-3602        |
| AP Type                  | 802.11n           |
| Wlan Profile             | Webauth           |
| Status                   | Associated        |
| Association ID           | 1                 |
| 802.11 Authentication    | Open System       |
| Reason Code              | 1                 |
| Status Code              | 0                 |
| CF Pollable              | Not implemented   |
| CF Pollable Request      | Not implemented   |
| Short Preamble           | Not implemented   |
| PBCC                     | Not implemented   |
| Channel Agility          | Not implemented   |
| Fast BSS Transition      | Not implemented   |
| FT Reassociation Timeout | 20                |
| Session Timeout          | 1800              |
| WEP state                | Disabled          |

### ▼ Security Information

|                           |                |
|---------------------------|----------------|
| Security Policy Completed | Enabled        |
| Policy Type               | N/A            |
| Encryption Cypher         | None           |
| EAP type                  | Not Applicable |
| SNMP Nac State            | None           |

### ▼ Client Statistics

|                  |   |
|------------------|---|
| Bytes Received   | 0 |
| Bytes Sent       | 0 |
| Packets Received | 0 |
| Packets Sent     | 0 |
| Policy Errors    | 0 |

## 驗證

目前沒有適用於此組態的驗證程序。

## 疑難排解

**附註：** 因為調試是處理器密集型的，所以您應該在計畫的維護視窗中運行調試。

輸入以下偵錯以進行組態疑難排解：

```
debug client mac-address 00:21:6A:89:51:CA
debug ip http all
debug access-session all
```

All Auth Manager debugging is on  
SURBG-5760#**debug ip admission all**  
All IP admission debugging is on

5760#show debugging

IP admission:

IP admission AAA event debugging is on  
IP admission ACL event debugging is on  
IP admission session-mgr debugging is on  
IP admission development debugging is on  
IP admission denial-of-service debugging is on  
IP admission EAPoUDP posture validation debugging is on  
IP admission error debugging is on  
IP admission HTTP proxy daemon debugging is on  
IP admission L3 idle-timer debugging is on  
IP admission input-feature debugging is on  
IP admission io debugging is on  
IP admission page debugging is on  
IP admission qualify debugging is on  
IP admission session debugging is on  
IP admission state debugging is on  
IP admission timer debugging is on  
IP admission client debugging is on  
IP admission high-availability debugging is on

HTTP Server:

HTTP Server transaction debugging is on  
HTTP Server tokens debugging is on  
HTTP Server EZSetup debugging is on  
HTTP Server URL debugging is on  
HTTP Server Authentication debugging is on  
HTTP Server Side Includes debugging is on  
HTTP Application Inout debugging is on  
HTTP Application Detail debugging is on  
HTTP Server Error debugging is on  
HTTP SSL Error debugging is on

Nova Platform:

dot11/state debugging is on  
pem/events debugging is on  
ft/events debugging is on  
client/mac-addr debugging is on  
dot11/detail debugging is on  
mac/ filters[string 00:21:6A:89:51:C] debugging is on  
dot11/error debugging is on  
dot11/mobile debugging is on  
pem/state debugging is on

SURBG-5760#

**\*Oct 9 04:16:37.962: %IOSXE-7-PLATFORM: 1 process wcm: Processing assoc-req station: 0021.6a89.51ca AP: c8f9.f983.4260 -01 thread:-114119824**  
\*Oct 9 04:16:37.962: %IOSXE-7-PLATFORM: 1 process wcm: 0021.6a89.51ca Adding mobile on LWAPP AP c8f9.f983.4260 (1)  
\*Oct 9 04:16:37.962: %IOSXE-7-PLATFORM: 1 process wcm: 0021.6a89.51ca Creating WL station entry for client - rc 0  
\*Oct 9 04:16:37.962: %IOSXE-7-PLATFORM: 1 process wcm: 0021.6a89.51ca Association received from mobile on AP c8f9.f983.4260  
\*Oct 9 04:16:37.962: %IOSXE-7-PLATFORM: 1 process wcm: 0021.6a89.51ca qos upstream policy is unknown and downstream policy is unknown  
\*Oct 9 04:16:37.962: %IOSXE-7-PLATFORM: 1 process wcm: 0021.6a89.51ca ap Changed 0 wlanChanged 0 mscb ipAddr 0.0.0.0, apf RadiusOverride 0x0, numIPv6Addr=0  
\*Oct 9 04:16:37.962: %IOSXE-7-PLATFORM: 1 process wcm: 0021.6a89.51ca Applying WLAN policy on MSCB.  
\*Oct 9 04:16:37.963: %IOSXE-7-PLATFORM: 1 process wcm: 0021.6a89.51ca Applying WLAN ACL policies to client  
\*Oct 9 04:16:37.963: %IOSXE-7-PLATFORM: 1 process wcm: 0021.6a89.51ca No Interface ACL used for Wireless client in WCM(NGWC)

**\*Oct 9 04:16:37.963: %IOSXE-7-PLATFORM: 1 process wcm: 0021.6a89.51ca Applying site-specific IPv6 override for station 0021.6a89.51ca - vapId 9, site 'default-group', interface 'VLAN0020'**

\*Oct 9 04:16:37.963: %IOSXE-7-PLATFORM: 1 process wcm: 0021.6a89.51ca Applying local bridging Interface Policy for station 0021.6a89.51ca - vlan 20, interface 'VLAN0020'

\*Oct 9 04:16:37.963: %IOSXE-7-PLATFORM: 1 process wcm: 0021.6a89.51ca STA - rates (8): 140 18 152 36 176 72 96 108 0 0 0 0 0 0 0

\*Oct 9 04:16:37.963: %IOSXE-7-PLATFORM: 1 process wcm: 0021.6a89.51ca new capwap\_wtp\_iif\_id 45e7800000000c, sm capwap\_wtp\_iif\_id 0

\*Oct 9 04:16:37.963: %IOSXE-7-PLATFORM: 1 process wcm: 0021.6a89.51ca WCDB\_ADD: Radio IIFID 0x6025800000000e, BSSID IIF Id 0x498f800000001b, COS 4

\*Oct 9 04:16:37.963: %IOSXE-7-PLATFORM: 1 process wcm: Load Balancer: Success, Resource allocated are: Active Switch number: 1, Active Asic number : 0, Reserve Switch number 2 Reserve Asic number 0. AP Asic num 0

\*Oct 9 04:16:37.963: %IOSXE-7-PLATFORM: 1 process wcm: 0021.6a89.51ca WCDB\_ADD: Anchor Sw 1, Doppler 0

\*Oct 9 04:16:37.963: %IOSXE-7-PLATFORM: 1 process wcm: 0021.6a89.51ca WCDB\_ALLOCATE: Client IIF Id alloc SUCCESS w/ client 58b5800000001c (state 0).

\*Oct 9 04:16:37.963: %IOSXE-7-PLATFORM: 1 process wcm: 0021.6a89.51ca iifid Clearing Ack flag

\*Oct 9 04:16:37.963: %IOSXE-7-PLATFORM: 1 process wcm: 0021.6a89.51ca WCDB\_ADD: Platform ID allocated successfully ID:10

\*Oct 9 04:16:37.963: %IOSXE-7-PLATFORM: 1 process wcm: 0021.6a89.51ca WCDB\_ADD: Adding opt82 len 0

\*Oct 9 04:16:37.963: %IOSXE-7-PLATFORM: 1 process wcm: 0021.6a89.51ca WCDB\_ADD: Cleaering Ack flag

\*Oct 9 04:16:37.963: %IOSXE-7-PLATFORM: 1 process wcm: 0021.6a89.51ca WCDB\_ADD: ssid Webauth bssid c8f9.f983.4260 vlan 20 auth=ASSOCIATION(0) wlan(ap-group/global) 9/9 client 0 assoc 1 mob=Unassoc(0) radio 1 m\_vlan 20 ip 0.0.0.0 src 0x45e7800000000c dst 0x0 cid 0x58b5800000001c glob rsc id 10dhcpsrv 0.0.0.0

\*Oct 9 04:16:37.963: %IOSXE-7-PLATFORM: 1 process wcm: 0021.6a89.51ca WCDB\_ADD: mscb iifid 0x58b5800000001c msinfo iifid 0x0

\*Oct 9 04:16:37.963: %IOSXE-7-PLATFORM: 1 process wcm: 0021.6a89.51ca 0.0.0.0 START (0) Initializing policy

\*Oct 9 04:16:37.963: %IOSXE-7-PLATFORM: 1 process wcm: 0021.6a89.51ca Change state to AUTHCHECK (2) last state START (0)

**\*Oct 9 04:16:37.963: %IOSXE-7-PLATFORM: 1 process wcm: 0021.6a89.51ca Change state to L2AUTHCOMPLETE (4) last state AUTHCHECK (2)**

\*Oct 9 04:16:37.963: %IOSXE-7-PLATFORM: 1 process wcm: 0021.6a89.51ca WCDB\_CHANGE: Client 1 m\_vlan 20 Radio iif id 0x6025800000000e bssid iif id 0x498f800000001b, bssid c8f9.f983.4260

\*Oct 9 04:16:37.963: %IOSXE-7-PLATFORM: 1 process wcm: 0021.6a89.51ca WCDB\_AUTH: Adding opt82 len 0

\*Oct 9 04:16:37.963: %IOSXE-7-PLATFORM: 1 process wcm: WCDB\_IIF: Ack Message ID: 0x58b5800000001c code 1001

\*Oct 9 04:16:37.963: %IOSXE-7-PLATFORM: 1 process wcm: 0021.6a89.51ca WCDB\_LLM: NoRun Prev Mob 0, Curr Mob 0 llmReq 1, return False

\*Oct 9 04:16:37.963: %IOSXE-7-PLATFORM: 1 process wcm: 0021.6a89.51ca auth state 1 mob state 0 setWme 0 wme 1 roam\_sent 0

\*Oct 9 04:16:37.964: %IOSXE-7-PLATFORM: 1 process wcm: 0021.6a89.51ca WCDB\_CHANGE: auth=L2\_AUTH(1) vlan 20 radio 1 client\_id 0x58b5800000001c mobility=Unassoc(0) src\_int 0x45e7800000000c dst\_int 0x0 ackflag 0 reassoc\_client 0 llm\_notif 0 ip 0.0.0.0 ip\_learn\_type 0

\*Oct 9 04:16:37.964: %IOSXE-7-PLATFORM: 1 process wcm: 0021.6a89.51ca WCDB\_CHANGE: In L2 auth but l2ack waiting lfag not set,so set

\*Oct 9 04:16:37.964: %IOSXE-7-PLATFORM: 1 process wcm: 0021.6a89.51ca 0.0.0.0 L2AUTHCOMPLETE (4) DHCP Not required on AP c8f9.f983.4260 vapId 9 apVapId 9for this client

\*Oct 9 04:16:37.964: %IOSXE-7-PLATFORM: 1 process wcm: 0021.6a89.51ca Not Using WMM Compliance code qosCap 00

\*Oct 9 04:16:37.964: %IOSXE-7-PLATFORM: 1 process wcm: 0021.6a89.51ca 0.0.0.0 L2AUTHCOMPLETE (4) Plumbed mobile LWAPP rule on AP c8f9.f983.4260 vapId 9

apVapId 9

\*Oct 9 04:16:37.964: %IOSXE-7-PLATFORM: 1 process wcm: 0021.6a89.51ca Change state to DHCP\_REQD (7) last state L2AUTHCOMPLETE (4)

\*Oct 9 04:16:37.964: %IOSXE-7-PLATFORM: 1 process wcm: 0021.6a89.51ca WCDB\_CHANGE: Client 1 m\_vlan 20 Radio iif id 0x6025800000000e bssid iif id 0x498f8000000001b, bssid c8f9.f983.4260

\*Oct 9 04:16:37.964: %IOSXE-7-PLATFORM: 1 process wcm: 0021.6a89.51ca WCDB\_AUTH: Adding opt82 len 0

\*Oct 9 04:16:37.964: %IOSXE-7-PLATFORM: 1 process wcm: 0021.6a89.51ca WCDB\_CHANGE: Suppressing SPI (Mobility state not known) pemstate 7 state LEARN\_IP(2) vlan 20 client\_id 0x58b58000000001c mob=Unassoc(0) ackflag 1 dropd 0

\*Oct 9 04:16:37.964: %IOSXE-7-PLATFORM: 1 process wcm: 0021.6a89.51ca Incrementing the Reassociation Count 1 for client (of interface VLAN0020)

\*Oct 9 04:16:37.964: %IOSXE-7-PLATFORM: 1 process wcm: 0021.6a89.51ca apfPemAddUser2 (apf\_policy.c:161) Changing state for mobile 0021.6a89.51ca on AP c8f9.f983.4260 from Idle to Associated

\*Oct 9 04:16:37.964: %IOSXE-7-PLATFORM: 1 process wcm: 0021.6a89.51ca Reason code 0, Preset 4, AAA cause 1

\*Oct 9 04:16:37.964: %IOSXE-7-PLATFORM: 1 process wcm: 0021.6a89.51ca Scheduling deletion of Mobile Station: (callerId: 49) in 1800 seconds

\*Oct 9 04:16:37.964: %IOSXE-7-PLATFORM: 1 process wcm: 0021.6a89.51ca Ms Timeout = 1800, Session Timeout = 1800

\*Oct 9 04:16:37.964: %IOSXE-7-PLATFORM: 1 process wcm: Sending assoc-resp station: 0021.6a89.51ca AP: c8f9.f983.4260 -01 thread:-114119824

\*Oct 9 04:16:37.964: %IOSXE-7-PLATFORM: 1 process wcm: 0021.6a89.51ca Sending Assoc Response to station on BSSID c8f9.f983.4260 (status 0) ApVapId 9 Slot 1

\*Oct 9 04:16:37.964: %IOSXE-7-PLATFORM: 1 process wcm: 0021.6a89.51ca apfProcessAssocReq (apf\_80211.c:6224) Changing state for mobile 0021.6a89.51ca on AP c8f9.f983.4260 from Associated to Associated

\*Oct 9 04:16:37.964: %IOSXE-7-PLATFORM: 1 process wcm: 0021.6a89.51ca 0.0.0.0 DHCP\_REQD (7) pemAdvanceState2: MOBILITY-INCOMPLETE with state 7.

\*Oct 9 04:16:37.964: %IOSXE-7-PLATFORM: 1 process wcm: 0021.6a89.51ca 0.0.0.0 DHCP\_REQD (7) pemAdvanceState2: MOBILITY-INCOMPLETE with state 7.

\*Oct 9 04:16:37.965: %IOSXE-7-PLATFORM: 1 process wcm: 0021.6a89.51ca 0.0.0.0 DHCP\_REQD (7) pemAdvanceState2: MOBILITY-COMPLETE with state 7.

\*Oct 9 04:16:37.965: %IOSXE-7-PLATFORM: 1 process wcm: 0021.6a89.51ca 0.0.0.0 DHCP\_REQD (7) State Update from Mobility-Incomplete to Mobility-Complete, mobility role=Local, client state=APF\_MS\_STATE\_ASSOCIATED

\*Oct 9 04:16:37.965: %IOSXE-7-PLATFORM: 1 process wcm: 0021.6a89.51ca 0.0.0.0 DHCP\_REQD (7) pemAdvanceState2 3649, Adding TMP rule

\*Oct 9 04:16:37.965: %IOSXE-7-PLATFORM: 1 process wcm: 0021.6a89.51ca 0.0.0.0 DHCP\_REQD (7) Adding Fast Path rule^M on AP c8f9.f983.4260 , slot 1 802.1P = 0^M

\*Oct 9 04:16:37.965: %IOSXE-7-PLATFORM: 1 process wcm: 0021.6a89.51ca 0.0.0.0 DHCP\_REQD (7) Successfully plumbed mobile rule

**\*Oct 9 04:16:37.965: %IOSXE-7-PLATFORM: 1 process wcm: 0021.6a89.51ca**

**WEBAUTH: Using method list Local\_webauth**

**\*Oct 9 04:16:37.965: %IOSXE-7-PLATFORM: 1 process wcm: 0021.6a89.51ca**

**WEBAUTH: Using webAuth profile name web**

\*Oct 9 04:16:37.965: %IOSXE-7-PLATFORM: 1 process wcm: 0021.6a89.51ca WEBAUTH: Using webAuth Max Logins 3

\*Oct 9 04:16:37.965: %IOSXE-7-PLATFORM: 1 process wcm: 0021.6a89.51ca WEBAUTH: Calling Auth Mgr to authenticate client 58b58000000001c

\*Oct 9 04:16:37.965: %IOSXE-7-PLATFORM: 1 process wcm: 0021.6a89.51ca WEBAUTH: apfMsWebAuthInitiated is not true. So not updating SM

\*Oct 9 04:16:37.965: %IOSXE-7-PLATFORM: 1 process wcm: 0021.6a89.51ca WEBAUTH: At the End of webAuthClientAuthNotify mscb->apfMsOldSmwtp\_iif\_id = 0

\*Oct 9 04:16:37.965: %IOSXE-7-PLATFORM: 1 process wcm: 0021.6a89.51ca WCDB\_CHANGE: Client 1 m\_vlan 20 Radio iif id 0x6025800000000e bssid iif id 0x498f8000000001b, bssid c8f9.f983.4260

\*Oct 9 04:16:37.965: %IOSXE-7-PLATFORM: 1 process wcm: 0021.6a89.51ca WCDB\_AUTH: Adding opt82 len 0

\*Oct 9 04:16:37.965: %IOSXE-7-PLATFORM: 1 process wcm: 0021.6a89.51ca WCDB\_LLM: NoRun Prev Mob 0, Curr Mob 1 llmReq 1, return False

\*Oct 9 04:16:37.965: %IOSXE-7-PLATFORM: 1 process wcm: 0021.6a89.51ca

WCDB\_CHANGE: Suppressing SPI (ACK message not recvd) pemstate 7 state LEARN\_IP(2)  
vlan 20 client\_id 0x58b5800000001c mob=Local(1) ackflag 1 dropd 1  
\*Oct 9 04:16:37.965: %IOSXE-7-PLATFORM: 1 process wcm: 0021.6a89.51ca Error  
updating wcdb on mobility complete  
\*Oct 9 04:16:37.965: %IOSXE-7-PLATFORM: 1 process wcm: PEM recv processing  
msg Epm spi response(12)  
\*Oct 9 04:16:37.965: %IOSXE-7-PLATFORM: 1 process wcm: 0021.6a89.51ca aaa  
attribute list length is 79  
\*Oct 9 04:16:37.965: %IOSXE-7-PLATFORM: 1 process wcm: 0021.6a89.51ca  
Sending SPI spi\_epm\_epm\_session\_create successfull  
\*Oct 9 04:16:37.965: %IOSXE-7-PLATFORM: 1 process wcm: PEM recv processing msg  
Add SCB(3)  
\*Oct 9 04:16:37.965: %IOSXE-7-PLATFORM: 1 process wcm: 0021.6a89.51ca 0.0.0.0,  
auth\_state 7 mmRole Local !!!  
\*Oct 9 04:16:37.965: %IOSXE-7-PLATFORM: 1 process wcm: 0021.6a89.51ca 0.0.0.0,  
auth\_state 7 mmRole Local, updating wcdb not needed  
\*Oct 9 04:16:37.965: %IOSXE-7-PLATFORM: 1 process wcm: 0021.6a89.51ca Tclas  
Plumb needed: 0  
\*Oct 9 04:16:37.966: %IOSXE-7-PLATFORM: 1 process wcm: 0021.6a89.51ca WCDB  
SPI response msg handler client code 0 mob state 0  
\*Oct 9 04:16:37.966: %IOSXE-7-PLATFORM: 1 process wcm: 0021.6a89.51ca  
WcdbClientUpdate: L2 Auth ACK from WCDB  
\*Oct 9 04:16:37.966: %IOSXE-7-PLATFORM: 1 process wcm: 0021.6a89.51ca  
WCDB\_L2ACK: wcdbAckRecvdFlag updated  
\*Oct 9 04:16:37.966: %IOSXE-7-PLATFORM: 1 process wcm: 0021.6a89.51ca  
WCDB\_CHANGE: Client 1 m\_vlan 20 Radio iif id 0x6025800000000e bssid iif id  
0x498f8000000001b, bssid c8f9.f983.4260  
\*Oct 9 04:16:37.966: %IOSXE-7-PLATFORM: 1 process wcm: 0021.6a89.51ca  
WCDB\_AUTH: Adding opt82 len 0  
\*Oct 9 04:16:37.966: %IOSXE-7-PLATFORM: 1 process wcm: 0021.6a89.51ca  
WCDB\_LLM: NoRun Prev Mob 0, Curr Mob 1 llmReq 1, return False  
\*Oct 9 04:16:37.966: %IOSXE-7-PLATFORM: 1 process wcm: 0021.6a89.51ca  
auth state 2 mob state 1 setWme 0 wme 1 roam\_sent 0  
\*Oct 9 04:16:37.966: %IOSXE-7-PLATFORM: 1 process wcm: 0021.6a89.51ca  
WCDB\_CHANGE: auth=LEARN\_IP(2) vlan 20 radio 1 client\_id 0x58b5800000001c  
mobility=Local(1) src\_int 0x45e78000000000c dst\_int 0x0 ackflag 2  
reassoc\_client 0 llm\_notif 0 ip 0.0.0.0 ip\_learn\_type 0  
\*Oct 9 04:16:37.967: %IOSXE-7-PLATFORM: 1 process wcm: EPM: Session  
create resp - client handle 58b58000000001c session 10000015  
\*Oct 9 04:16:37.967: %IOSXE-7-PLATFORM: 1 process wcm: EPM: Netflow  
session create  
resp - client handle 58b58000000001c sess 10000015  
\*Oct 9 04:16:37.967: %IOSXE-7-PLATFORM: 1 process wcm: PEM recv processing  
msg Epm spi response(12)  
\*Oct 9 04:16:37.967: %IOSXE-7-PLATFORM: 1 process wcm: 0021.6a89.51ca Received  
session\_create\_response for client handle 24969359310979100  
\*Oct 9 04:16:37.967: %IOSXE-7-PLATFORM: 1 process wcm: 0021.6a89.51ca Received  
session\_create\_response with EPM session handle 268435477  
\*Oct 9 04:16:37.967: %IOSXE-7-PLATFORM: 1 process wcm: 0021.6a89.51ca Web-Auth  
client, checking if pre-auth policies are needed to be plumbed  
\*Oct 9 04:16:37.967: %IOSXE-7-PLATFORM: 1 process wcm: 0021.6a89.51ca Trying to  
create a preauth policy for the client  
\*Oct 9 04:16:37.967: %IOSXE-7-PLATFORM: 1 process wcm: 0021.6a89.51ca Send  
request to EPM  
\*Oct 9 04:16:37.967: %IOSXE-7-PLATFORM: 1 process wcm: 0021.6a89.51ca aaa  
attribute list length is 34  
\*Oct 9 04:16:37.967: %IOSXE-7-PLATFORM: 1 process wcm: 0021.6a89.51ca Sending  
Activate request for session handle 268435477 successful  
\*Oct 9 04:16:37.967: %IOSXE-7-PLATFORM: 1 process wcm: 0021.6a89.51ca Pre-auth  
policy request sent! Now wait for pre-auth policy ACK from EPM  
\*Oct 9 04:16:37.967: %IOSXE-7-PLATFORM: 1 process wcm: 0021.6a89.51ca Setting  
the epmSendAclDone flag.  
\*Oct 9 04:16:37.968: %IOSXE-7-PLATFORM: 1 process wcm: EPM: Init feature,  
client handle 58b58000000001c session 10000015 authz 1f000015



\*Oct 9 04:16:37.968: %IOSXE-7-PLATFORM: 1 process wcm: EPM: Activate feature client handle 58b5800000001c sess 10000015 authz 1f000015

\*Oct 9 04:16:37.968: %IOSXE-7-PLATFORM: 1 process wcm: PEM rcv processing msg Epm spi response(12)

\*Oct 9 04:16:37.968: %IOSXE-7-PLATFORM: 1 process wcm: 0021.6a89.51ca Received activate\_features\_resp for client handle 24969359310979100

\*Oct 9 04:16:37.968: %IOSXE-7-PLATFORM: 1 process wcm: 0021.6a89.51ca Received activate\_features\_resp for EPM session handle 268435477

**\*Oct 9 04:16:38.019: %IOSXE-7-PLATFORM: 1 process wcm: 0021.6a89.51ca WCDB\_IP\_BIND: w/ IPv4 20.20.20.6 ip\_learn\_type DHCP add\_delete 1,options\_length 0**

\*Oct 9 04:16:38.019: %IOSXE-7-PLATFORM: 1 process wcm: 0021.6a89.51ca WcdbClientUpdate: IP Binding from WCDB ip\_learn\_type 1, add\_or\_delete 1

\*Oct 9 04:16:38.019: %IOSXE-7-PLATFORM: 1 process wcm: 0021.6a89.51ca IPv4 Addr: 20:20:20:6

\*Oct 9 04:16:38.019: %IOSXE-7-PLATFORM: 1 process wcm: 0021.6a89.51ca MS got the IP, resetting the Reassociation Count 0 for client

\*Oct 9 04:16:38.019: %IOSXE-7-PLATFORM: 1 process wcm: 0021.6a89.51ca Change state to WEBAUTH\_REQD (8) last state DHCP\_REQD (7)

\*Oct 9 04:16:38.019: %IOSXE-7-PLATFORM: 1 process wcm: 0021.6a89.51ca WCDB\_CHANGE: Client 1 m\_vlan 20 Radio iif id 0x6025800000000e bssid iif id 0x498f800000001b, bssid c8f9.f983.4260

\*Oct 9 04:16:38.019: %IOSXE-7-PLATFORM: 1 process wcm: 0021.6a89.51ca WCDB\_AUTH: Adding opt82 len 0

\*Oct 9 04:16:38.019: %IOSXE-7-PLATFORM: 1 process wcm: 0021.6a89.51ca WCDB\_LLM: NoRun Prev Mob 1, Curr Mob 1 llmReq 5, return False

\*Oct 9 04:16:38.019: %IOSXE-7-PLATFORM: 1 process wcm: 0021.6a89.51ca auth state 3 mob state 1 setWme 0 wme 1 roam\_sent 0

\*Oct 9 04:16:38.019: %IOSXE-7-PLATFORM: 1 process wcm: 0021.6a89.51ca WCDB\_CHANGE: auth=L3\_AUTH(3) vlan 20 radio 1 client\_id 0x58b5800000001c mobility=Local(1) src\_int 0x45e7800000000c dst\_int 0x0 ackflag 2 reassoc\_client 0 llm\_notif 0 ip 20.20.20.6 ip\_learn\_type DHCP

**\*Oct 9 04:16:38.019: %IOSXE-7-PLATFORM: 1 process wcm: 0021.6a89.51ca WEBAUTH: Using method list Local webauth**

**\*Oct 9 04:16:38.019: %IOSXE-7-PLATFORM: 1 process wcm: 0021.6a89.51ca WEBAUTH: Using webAuth profile name web**

\*Oct 9 04:16:38.019: %IOSXE-7-PLATFORM: 1 process wcm: 0021.6a89.51ca WEBAUTH: Using webAuth Max Logins 3

\*Oct 9 04:16:38.019: %IOSXE-7-PLATFORM: 1 process wcm: 0021.6a89.51ca WEBAUTH: Calling Auth Mgr to authenticate client 58b5800000001c

\*Oct 9 04:16:38.019: %IOSXE-7-PLATFORM: 1 process wcm: 0021.6a89.51ca WEBAUTH: Called SM start with apfMswtp\_iif\_id 45e7800000000c, mscb->apfMswtp\_iif\_id 58b5800000001c

\*Oct 9 04:16:38.019: %IOSXE-7-PLATFORM: 1 process wcm: 0021.6a89.51ca WEBAUTH: At the End of webAuthClientAuthNotify mscb->apfMsOldSmtwp\_iif\_id = 45e7800000000c

\*Oct 9 04:16:38.019: %IOSXE-7-PLATFORM: 1 process wcm: 0021.6a89.51ca 20.20.20.6 WEBAUTH\_REQD (8) pemAdvanceState2 4382, Adding TMP rule

\*Oct 9 04:16:38.019: %IOSXE-7-PLATFORM: 1 process wcm: 0021.6a89.51ca 20.20.20.6 WEBAUTH\_REQD (8) Replacing Fast Path rule^M on AP c8f9.f983.4260 , slot 1 802.1P = 0^M

**\*Oct 9 04:16:38.019: %IOSXE-7-PLATFORM: 1 process wcm: 0021.6a89.51ca 20.20.20.6 WEBAUTH\_REQD (8) Successfully plumbed mobile rule**

\*Oct 9 04:16:38.019: %IOSXE-7-PLATFORM: 1 process wcm: 0021.6a89.51ca Plumbing web-auth redirect rule due to user logout

\*Oct 9 04:16:38.019: %IOSXE-7-PLATFORM: 1 process wcm: 0021.6a89.51ca Sending IPv4 update to Controller 10.105.135.178

\*Oct 9 04:16:38.019: %IOSXE-7-PLATFORM: 1 process wcm: 0021.6a89.51ca Assigning Address 20.20.20.6 to mobile

\*Oct 9 04:16:38.020: %IOSXE-7-PLATFORM: 1 process wcm: PEM rcv processing msg Add SCB(3)

\*Oct 9 04:16:38.020: %IOSXE-7-PLATFORM: 1 process wcm: 0021.6a89.51ca 20.20.20.6, auth\_state 8 mmRole Local !!!

\*Oct 9 04:16:38.020: %IOSXE-7-PLATFORM: 1 process wcm: 0021.6a89.51ca 20.20.20.6, auth\_state 8 mmRole Local, updating wcdb not needed

\*Oct 9 04:16:38.020: %IOSXE-7-PLATFORM: 1 process wcm: 0021.6a89.51ca Tclas

Plumb needed: 0

\*Oct 9 04:16:38.020: AUTH-EVENT: [0021.6a89.51ca, Ca1] Received session event 'SESSION\_START' from client

\*Oct 9 04:16:38.020: AUTH-EVENT: [0021.6a89.51ca, Ca1] Session start for 0021.6a89.51ca

\*Oct 9 04:16:38.020: AUTH-EVENT: [0021.6a89.51ca, Ca1] Using stored AAA ID 0x00000015

\*Oct 9 04:16:38.020: AUTH-EVENT: [0021.6a89.51ca, Ca1] Retrieved Client IIF ID 58B5800000001C

\*Oct 9 04:16:38.020: AUTH-EVENT: [0021.6a89.51ca, Ca1] Allocated new Auth Manager context (handle 0x10000016)

\*Oct 9 04:16:38.020: AUTH-DETAIL: [0021.6a89.51ca, Ca1] Client 0021.6a89.51ca, Initialising Method state to 'Not run'

\*Oct 9 04:16:38.020: AUTH-DETAIL: [0021.6a89.51ca, Ca1] Adding method Session Mgr IPDT Shim to runnable list for session 0x10000016

\*Oct 9 04:16:38.020: AUTH-DETAIL: [0021.6a89.51ca, Ca1] Client 0021.6a89.51ca, Initialising Method SVM state to 'Not run'

\*Oct 9 04:16:38.020: AUTH-DETAIL: [0021.6a89.51ca, Ca1] Adding method SVM to runnable list for session 0x10000016

\*Oct 9 04:16:38.020: AUTH-DETAIL: [0021.6a89.51ca, Ca1] Client 0021.6a89.51ca, Initialising Method state to 'Not run'

\*Oct 9 04:16:38.020: AUTH-DETAIL: [0021.6a89.51ca, Ca1] Adding method Switch PI to runnable list for session 0x10000016

\*Oct 9 04:16:38.020: AUTH-DETAIL: [0021.6a89.51ca, Ca1] Client 0021.6a89.51ca, Initialising Method state to 'Not run'

\*Oct 9 04:16:38.020: AUTH-DETAIL: [0021.6a89.51ca, Ca1] Adding method Session Mgr SISF Shim to runnable list for session 0x10000016

\*Oct 9 04:16:38.020: AUTH-DETAIL: [0021.6a89.51ca, Ca1] Client 0021.6a89.51ca, Initialising Method iaf state to 'Not run'

\*Oct 9 04:16:38.020: AUTH-DETAIL: [0021.6a89.51ca, Ca1] Adding method iaf to runnable list for session 0x10000016

\*Oct 9 04:16:38.020: AUTH-DETAIL: [0021.6a89.51ca, Ca1] Client 0021.6a89.51ca, Initialising Method Tag state to 'Not run'

\*Oct 9 04:16:38.020: AUTH-DETAIL: [0021.6a89.51ca, Ca1] Adding method Tag to runnable list for session 0x10000016

\*Oct 9 04:16:38.020: AUTH-DETAIL: [0021.6a89.51ca, Ca1] Client 0021.6a89.51ca, Initialising Method dct state to 'Not run'

\*Oct 9 04:16:38.020: AUTH-DETAIL: [0021.6a89.51ca, Ca1] Adding method dct to runnable list for session 0x10000016

\*Oct 9 04:16:38.020: AUTH-DETAIL: [0021.6a89.51ca, Ca1] Client 0021.6a89.51ca, Initialising Method SM Reauth Plugin state to 'Not run'

\*Oct 9 04:16:38.020: AUTH-DETAIL: [0021.6a89.51ca, Ca1] Adding method SM Reauth Plugin to runnable list for session 0x10000016

\*Oct 9 04:16:38.020: AUTH-DETAIL: [0021.6a89.51ca, Ca1] Client 0021.6a89.51ca, Initialising Method SM Accounting Feature state to 'Not run'

\*Oct 9 04:16:38.020: AUTH-DETAIL: [0021.6a89.51ca, Ca1] Adding method SM Accounting Feature to runnable list for session 0x10000016

\*Oct 9 04:16:38.020: AUTH-DETAIL: [0021.6a89.51ca, Ca1] Client 0021.6a89.51ca, Initialising Method state to 'Not run'

\*Oct 9 04:16:38.020: AUTH-DETAIL: [0021.6a89.51ca, Ca1] Adding method Session Mgr FFCP Shim to runnable list for session 0x10000016

\*Oct 9 04:16:38.020: AUTH-DETAIL: [0021.6a89.51ca, Ca1] Client 0021.6a89.51ca, Initialising Method state to 'Not run'

\*Oct 9 04:16:38.020: AUTH-DETAIL: [0021.6a89.51ca, Ca1] Adding method AIM to runnable list for session 0x10000016

\*Oct 9 04:16:38.020: AUTH-DETAIL: [0021.6a89.51ca, Ca1] Client 0021.6a89.51ca, Initialising Method dotlx state to 'Not run'

\*Oct 9 04:16:38.020: AUTH-DETAIL: [0021.6a89.51ca, Ca1] Adding method dotlx to runnable list for session 0x10000016

\*Oct 9 04:16:38.020: AUTH-DETAIL: [0021.6a89.51ca, Ca1] Client 0021.6a89.51ca, Initialising Method mab state to 'Not run'

\*Oct 9 04:16:38.020: AUTH-DETAIL: [0021.6a89.51ca, Ca1] Adding method mab to runnable list for session 0x10000016

```
*Oct 9 04:16:38.020: AUTH-DETAIL: [0021.6a89.51ca, Ca1] Client 0021.6a89.51ca,
Initialising Method webauth state to 'Not run'
*Oct 9 04:16:38.020: AUTH-DETAIL: [0021.6a89.51ca, Ca1] Adding method webauth
to runnable list for session 0x10000016
*Oct 9 04:16:38.020: AUTH-EVENT: [0021.6a89.51ca, Ca1] Processing SM CB request
for 0x10000016: Event: New client notification (201)
*Oct 9 04:16:38.020: AUTH-DETAIL: [0021.6a89.51ca, Ca1] Create attr list,
session 0x10000016:
*Oct 9 04:16:38.020: AUTH-DETAIL: [0021.6a89.51ca, Ca1] - adding MAC
0021.6a89.51ca
*Oct 9 04:16:38.020: AUTH-DETAIL: [0021.6a89.51ca, Ca1] - adding Swidb
0x9745F750
*Oct 9 04:16:38.020: AUTH-DETAIL: [0021.6a89.51ca, Ca1] - adding AAA_ID=15
*Oct 9 04:16:38.020: AUTH-DETAIL: [0021.6a89.51ca, Ca1] - adding Audit_sid=
0a6987b25254d8a500000015
*Oct 9 04:16:38.020: AUTH-DETAIL: [0021.6a89.51ca, Ca1] - adding IIF ID=
0x58B5800000001C
*Oct 9 04:16:38.020: AUTH-EVENT: [0021.6a89.51ca, Ca1] New client 0021.6a89.51ca -
client handle 0x00000001 for SVM
*Oct 9 04:16:38.020: AUTH-EVENT: [0021.6a89.51ca, Ca1] Added record to DB - hdl
0x10000016 / 0021.6a89.51ca. 1 session(s) on IDB
*Oct 9 04:16:38.020: AUTH-DETAIL: [0021.6a89.51ca, Ca1] Add record - adding MAC
0021.6a89.51ca
*Oct 9 04:16:38.020: AUTH-DETAIL: [0021.6a89.51ca, Ca1] Add record - adding
SWIDB Capwap1
*Oct 9 04:16:38.020: AUTH-DETAIL: [0021.6a89.51ca, Ca1] Add record - adding
AAA-ID 15
*Oct 9 04:16:38.020: AUTH-DETAIL: [0021.6a89.51ca, Ca1] Add record - adding
AUDIT-ID 0a6987b25254d8a500000015
*Oct 9 04:16:38.021: AUTH-DETAIL: [0021.6a89.51ca, Ca1] Add record - adding
IIF-ID 0x58B5800000001C
*Oct 9 04:16:38.021: AUTH-DETAIL: [0021.6a89.51ca, Ca1] Add record - adding
TARGET_SCOPE (Client)
*Oct 9 04:16:38.021: AUTH-EVENT: [0021.6a89.51ca, Ca1] No policy handle to
bind session
*Oct 9 04:16:38.021: AUTH-DETAIL: [0021.6a89.51ca, Ca1] Create attr list, session
0x10000016:
*Oct 9 04:16:38.021: AUTH-DETAIL: [0021.6a89.51ca, Ca1] - adding MAC 0021.6a89.51ca
*Oct 9 04:16:38.021: AUTH-DETAIL: [0021.6a89.51ca, Ca1] - adding Swidb 0x9745F750
*Oct 9 04:16:38.021: AUTH-DETAIL: [0021.6a89.51ca, Ca1] - adding AAA_ID=15
*Oct 9 04:16:38.021: AUTH-DETAIL: [0021.6a89.51ca, Ca1] - adding Audit_sid=
0a6987b25254d8a500000015
*Oct 9 04:16:38.021: AUTH-DETAIL: [0021.6a89.51ca, Ca1] - adding IIF ID=
0x58B5800000001C
*Oct 9 04:16:38.021: AUTH-EVENT: [0021.6a89.51ca, Ca1] Processing SM CB request for
0x10000016: Event: Start a method (200)
*Oct 9 04:16:38.021: WA-SM : Ca1 [0.0.0.0 ] Start CB, info hdl
00000000 [0x0], SM hdl 10000016, flags 0x0
*Oct 9 04:16:38.021: WA-SM : Ca1 [0.0.0.0 ] Start CB, Rcvd ID
attrs mac 0021.6a89.51ca, IIF 58B5800000001C , audit-ID 0a6987b25254d8a500000015
*Oct 9 04:16:38.021: WA-SM : Ca1 Creating idb subblock (1)
*Oct 9 04:16:38.021: WA-SESSN: [0.0.0.0 ] Create session, hdl
3D00000B [0x96FD5A50]
*Oct 9 04:16:38.021: WA-STATE: [0.0.0.0 ] State Invalid
State -> INIT
*Oct 9 04:16:38.021: WA-SESSN: Ca1 [0.0.0.0 ] Create session, Add
address 0.0.0.0 [0021.6a89.51ca]
*Oct 9 04:16:38.021: WA-STATE: Ca1 [0.0.0.0 ] State INIT -> INIT
*Oct 9 04:16:38.021: WA-TIMER: Ca1 [0.0.0.0 ] State timer start
(120 secs)
*Oct 9 04:16:38.021: WA-SM : Ca1 [0.0.0.0 ] Initiate session,
SM initd sessions 1
*Oct 9 04:16:38.021: WA-STATE: Ca1 [0.0.0.0 ] State INIT -> INIT
*Oct 9 04:16:38.021: WA-TIMER: Ca1 [0.0.0.0 ] State timer restart
```

(120 secs)

```
*Oct 9 04:16:38.021: WA-ACL : Cal [0.0.0.0 ] Add IPv4 intecept
ACL via FFM, name "IP-Adm-V4-Int-ACL-global", pri 50, IIF 58B580000001C
*Oct 9 04:16:38.021: WA-ACL : Cal [0.0.0.0 ] Add IPv6 intercept
ACL via FFM, name "IP-Adm-V6-Int-ACL-global", pri 52, IIF 58B580000001C
*Oct 9 04:16:38.021: AUTH-EVENT: [0021.6a89.51ca, Cal] Client 0021.6a89.51ca,
Context changing state from 'Idle' to 'Running'
*Oct 9 04:16:38.021: AUTH-EVENT: [0021.6a89.51ca, Cal] Client 0021.6a89.51ca,
Method webauth changing state from 'Not run' to 'Running'
*Oct 9 04:16:38.021: AUTH-EVENT: [0021.6a89.51ca, Cal] Received internal event
SINGLE_ID_UPDATE (handle 0x10000016)
*Oct 9 04:16:38.021: WA-SM : Cal [0.0.0.0 ] Change notif CB,
ADD, info hdl 3D00000B, SM hdl 10000016
*Oct 9 04:16:38.021: WA-SM : Cal [20.20.20.6 ] Change notif CB,
Add IPv4 address
*Oct 9 04:16:38.021: WA-SESSN: Cal [20.20.20.6 ] Change notif CB,
Add address
20.20.20.6 [0021.6a89.51ca]
*Oct 9 04:16:38.021: WA-SESSN: Cal [20.20.20.6 ] Adding ARP Table
entry [Notify CB] Vlan20 20.20.20.6 0021.6a89.51ca
*Oct 9 04:16:38.021: AUTH-SYNC: [0021.6a89.51ca, Cal] Delay add sync of addr
for 0021.6a89.51ca / 0x10000016
*Oct 9 04:16:38.021: AUTH-EVENT: Handling client event SESSION_STARTED (8) for
PRE, handle 0x10000016
*Oct 9 04:16:38.021: AUTH-EVENT: [0021.6a89.51ca, Cal] SM will not apply policy
for SESSION_STARTED on 0x10000016 / 0021.6a89.51ca
*Oct 9 04:16:38.021: AUTH-EVENT: [0021.6a89.51ca, Cal] Processing default action(s)
for event SESSION_STARTED for session 0x10000016.
*Oct 9 04:16:38.021: AUTH-DETAIL: No default action(s) for event SESSION_STARTED.
*Oct 9 04:16:38.472: AUTH-EVENT: Raising ext evt Template Activated (8) on session
0x10000015, client (unknown) (0), hdl 0x00000000, attr_list 0x41000336
*Oct 9 04:16:38.472: AUTH-EVENT: SM will not send event Template Activated to PRE
for 0x10000015
*Oct 9 04:16:38.472: %IOSXE-7-PLATFORM: 1 process wcm: EPM: Policy enforcement -
client handle 58b5800000001c session 7600000b authz 1f000015
*Oct 9 04:16:38.472: %IOSXE-7-PLATFORM: 1 process wcm: EPM: Netflow policy
enforcement - client handle 58b5800000001c sess 7600000b authz 1f000015 msg_type
0 policy_status 0 attr len 0
*Oct 9 04:16:38.472: %IOSXE-7-PLATFORM: 1 process wcm: PEM recv processing
msg Epm spi response(12)
*Oct 9 04:16:38.472: %IOSXE-7-PLATFORM: 1 process wcm: 0021.6a89.51ca
Received policy_enforcement_response for client handle 24969359310979100
*Oct 9 04:16:38.472: %IOSXE-7-PLATFORM: 1 process wcm: 0021.6a89.51ca
Received policy_enforcement_response for EPM session handle 1979711499
*Oct 9 04:16:38.472: %IOSXE-7-PLATFORM: 1 process wcm: 0021.6a89.51ca
Received response for _EPM_SPI_ACTIVATE_FEATURES request sent for client
*Oct 9 04:16:38.472: %IOSXE-7-PLATFORM: 1 process wcm: 0021.6a89.51ca
Received _EPM_SPI_STATUS_SUCCESS for request sent for client
*Oct 9 04:16:38.472: %IOSXE-7-PLATFORM: 1 process wcm: 0021.6a89.51ca
Pre-auth policy ACK recvd from EPM, unset flag on MSCB
*Oct 9 04:16:51.143: WA-QLFY : Cal [20.20.20.6 ] Ingress qlfy,
Session found, ACL in-place, mac [0021.6a89.51ca], intercept
*Oct 9 04:16:51.143: WA-INFT : Cal [20.20.20.6 ] 50164 TCP SYN [1],
dport 80, INIT state
*Oct 9 04:16:51.147: WA-QLFY : Cal [20.20.20.6 ] Ingress qlfy,
Session found, ACL in-place, mac [0021.6a89.51ca], intercept
*Oct 9 04:16:51.147: WA-HTTPD: Cal [20.20.20.6 ] 50164/0 HTTP
Intercept, New fd 0, sport [50164], info hdl [0x3D00000B], mac [0021.6a89.51ca]
*Oct 9 04:16:51.147: WA-HTTPD: Cal [20.20.20.6 ] 50164/0 Create
IO ctx, id [6B00002B], pid 208
*Oct 9 04:16:51.147: WA-CLNT : Cal [20.20.20.6 ] 50164 Client
conn add [0021.6a89.51ca] ioctx [6B00002B] #1 pid 208
*Oct 9 04:16:51.147: WA-IO : Cal [20.20.20.6 ] 50164/0 IO state
NEW -> READING
```

```
*Oct 9 04:16:51.147: WA-IO : Cal [20.20.20.6 ] 50164/0 Read event,
read buffer addr 0x97546DF4, length 2048, cursor 0
*Oct 9 04:16:51.147: WA-IO : Cal [20.20.20.6 ] 50164/0 Read event,
Read blocked, cursor 0
*Oct 9 04:16:51.147: WA-QLFY : Cal [20.20.20.6 ] Ingress qlfy,
Session found, ACL in-place, mac [0021.6a89.51ca], intercept
*Oct 9 04:16:51.147: WA-IO : Cal [20.20.20.6 ] 50164/0 Read event,
read buffer addr 0x97546DF4, length 2048, cursor 0
*Oct 9 04:16:51.147: WA-IO : Cal [20.20.20.6 ] 50164/0 Read event,
Read blocked, cursor 416
*Oct 9 04:16:51.147: WA-IO : Cal [20.20.20.6 ] 50164/0 Read event,
Message ready
*Oct 9 04:16:51.147: HTTP: token [STRING] len 3: 'GET'
*Oct 9 04:16:51.147: HTTP: token [SPACE ] len 1: ' '
*Oct 9 04:16:51.147: HTTP: token [OTHER ] len 1: '/'
*Oct 9 04:16:51.147: HTTP: token [STRING] len 8: 'wireless'
*Oct 9 04:16:51.147: HTTP: token [SPACE ] len 1: ' '
*Oct 9 04:16:51.147: HTTP: token [STRING] len 4: 'HTTP'
*Oct 9 04:16:51.147: HTTP: token [OTHER ] len 1: '/'
*Oct 9 04:16:51.148: HTTP: token [STRING] len 1: '1'
*Oct 9 04:16:51.148: HTTP: token [OTHER ] len 1: '.'
*Oct 9 04:16:51.148: HTTP: token [STRING] len 1: '1'
*Oct 9 04:16:51.148: HTTP: token [CRLF ] len 2: '\15\12'
*Oct 9 04:16:51.148: HTTP: token [STRING] len 6: 'Accept'
*Oct 9 04:16:51.148: HTTP: token [OTHER ] len 1: ':'
*Oct 9 04:16:51.148: HTTP: token [SPACE ] len 1: ' '
*Oct 9 04:16:51.148: HTTP: token [STRING] len 5: 'image'
*Oct 9 04:16:51.148: HTTP: token [OTHER ] len 1: '/'
*Oct 9 04:16:51.148: HTTP: token [STRING] len 4: 'jpeg'
*Oct 9 04:16:51.148: HTTP: token [OTHER ] len 1: ','
*Oct 9 04:16:51.148: HTTP: token [SPACE ] len 1: ' '
*Oct 9 04:16:51.148: HTTP: token [STRING] len 11: 'application'
*Oct 9 04:16:51.148: HTTP: token [OTHER ] len 1: '/'
*Oct 9 04:16:51.148: HTTP: token [STRING] len 1: 'x'
*Oct 9 04:16:51.148: HTTP: token [OTHER ] len 1: '-'
*Oct 9 04:16:51.148: HTTP: token [STRING] len 2: 'ms'
*Oct 9 04:16:51.148: HTTP: token [OTHER ] len 1: '-'
*Oct 9 04:16:51.148: HTTP: token [STRING] len 11: 'application'
*Oct 9 04:16:51.148: HTTP: token [OTHER ] len 1: ','
*Oct 9 04:16:51.148: HTTP: token [SPACE ] len 1: ' '
*Oct 9 04:16:51.148: HTTP: token [STRING] len 5: 'image'
*Oct 9 04:16:51.148: HTTP: token [OTHER ] len 1: '/'
*Oct 9 04:16:51.148: HTTP: token [STRING] len 3: 'gif'
*Oct 9 04:16:51.148: HTTP: token [OTHER ] len 1: ','
*Oct 9 04:16:51.148: HTTP: token [SPACE ] len 1: ' '
*Oct 9 04:16:51.148: HTTP: token [STRING] len 11: 'application'
*Oct 9 04:16:51.148: HTTP: token [OTHER ] len 1: '/'
*Oct 9 04:16:51.148: HTTP: token [STRING] len 4: 'xaml'
*Oct 9 04:16:51.148: HTTP: token [OTHER ] len 1: '+'
*Oct 9 04:16:51.148: HTTP: token [STRING] len 3: 'xml'
*Oct 9 04:16:51.148: HTTP: token [OTHER ] len 1: ','
*Oct 9 04:16:51.148: HTTP: token [SPACE ] len 1: ' '
*Oct 9 04:16:51.148: HTTP: token [STRING] len 5: 'image'
*Oct 9 04:16:51.148: HTTP: token [OTHER ] len 1: '/'
*Oct 9 04:16:51.148: HTTP: token [STRING] len 5: 'pjpeg'
*Oct 9 04:16:51.148: HTTP: token [OTHER ] len 1: ','
*Oct 9 04:16:51.148: HTTP: token [SPACE ] len 1: ' '
*Oct 9 04:16:51.148: HTTP: token [STRING] len 11: 'application'
*Oct 9 04:16:51.148: HTTP: token [OTHER ] len 1: '/'
*Oct 9 04:16:51.148: HTTP: token [STRING] len 1: 'x'
*Oct 9 04:16:51.148: HTTP: token [OTHER ] len 1: '-'
*Oct 9 04:16:51.148: HTTP: token [STRING] len 2: 'ms'
*Oct 9 04:16:51.148: HTTP: token [OTHER ] len 1: '-'
*Oct 9 04:16:51.148: HTTP: token [STRING] len 4: 'xbap'
```

\*Oct 9 04:16:51.148: HTTP: token [OTHER ] len 1: ','  
\*Oct 9 04:16:51.148: HTTP: token [SPACE ] len 1: '  
\*Oct 9 04:16:51.148: HTTP: token [OTHER ] len 1: '\*'  
\*Oct 9 04:16:51.148: HTTP: token [OTHER ] len 1: '/'  
\*Oct 9 04:16:51.148: HTTP: token [OTHER ] len 1: '\*'  
\*Oct 9 04:16:51.148: HTTP: token [CRLF ] len 2: '\\15\\12'  
\*Oct 9 04:16:51.148: HTTP: token [STRING] len 6: 'Accept'  
\*Oct 9 04:16:51.148: HTTP: token [OTHER ] len 1: '-'  
\*Oct 9 04:16:51.148: HTTP: token [STRING] len 8: 'Language'  
\*Oct 9 04:16:51.148: HTTP: token [OTHER ] len 1: ':'  
\*Oct 9 04:16:51.148: HTTP: token [SPACE ] len 1: '  
\*Oct 9 04:16:51.148: HTTP: token [STRING] len 2: 'en'  
\*Oct 9 04:16:51.148: HTTP: token [OTHER ] len 1: '-'  
\*Oct 9 04:16:51.148: HTTP: token [STRING] len 2: 'US'  
\*Oct 9 04:16:51.148: HTTP: token [CRLF ] len 2: '\\15\\12'  
\*Oct 9 04:16:51.148: HTTP: token [STRING] len 4: 'User'  
\*Oct 9 04:16:51.148: HTTP: token [OTHER ] len 1: '-'  
\*Oct 9 04:16:51.148: HTTP: token [STRING] len 5: 'Agent'  
\*Oct 9 04:16:51.148: HTTP: token [OTHER ] len 1: ':'  
\*Oct 9 04:16:51.148: HTTP: token [SPACE ] len 1: '  
\*Oct 9 04:16:51.148: HTTP: token [STRING] len 7: 'Mozilla'  
\*Oct 9 04:16:51.148: HTTP: token [OTHER ] len 1: '/'  
\*Oct 9 04:16:51.148: HTTP: token [STRING] len 1: '4'  
\*Oct 9 04:16:51.148: HTTP: token [OTHER ] len 1: '.'  
\*Oct 9 04:16:51.148: HTTP: token [STRING] len 1: '0'  
\*Oct 9 04:16:51.148: HTTP: token [SPACE ] len 1: '  
\*Oct 9 04:16:51.148: HTTP: token [OTHER ] len 1: '('  
\*Oct 9 04:16:51.148: HTTP: token [STRING] len 10: 'compatible'  
\*Oct 9 04:16:51.148: HTTP: token [OTHER ] len 1: ';'   
\*Oct 9 04:16:51.148: HTTP: token [SPACE ] len 1: '  
\*Oct 9 04:16:51.148: HTTP: token [STRING] len 4: 'MSIE'  
\*Oct 9 04:16:51.148: HTTP: token [SPACE ] len 1: '  
\*Oct 9 04:16:51.148: HTTP: token [STRING] len 1: '8'  
\*Oct 9 04:16:51.148: HTTP: token [OTHER ] len 1: '.'  
\*Oct 9 04:16:51.148: HTTP: token [STRING] len 1: '0'  
\*Oct 9 04:16:51.148: HTTP: token [OTHER ] len 1: ';'   
\*Oct 9 04:16:51.148: HTTP: token [SPACE ] len 1: '  
\*Oct 9 04:16:51.148: HTTP: token [STRING] len 7: 'Windows'  
\*Oct 9 04:16:51.148: HTTP: token [SPACE ] len 1: '  
\*Oct 9 04:16:51.148: HTTP: token [STRING] len 2: 'NT'  
\*Oct 9 04:16:51.148: HTTP: token [SPACE ] len 1: '  
\*Oct 9 04:16:51.148: HTTP: token [STRING] len 1: '6'  
\*Oct 9 04:16:51.148: HTTP: token [OTHER ] len 1: '.'  
\*Oct 9 04:16:51.148: HTTP: token [STRING] len 1: '1'  
\*Oct 9 04:16:51.148: HTTP: token [OTHER ] len 1: ';'   
\*Oct 9 04:16:51.148: HTTP: token [SPACE ] len 1: '  
\*Oct 9 04:16:51.148: HTTP: token [STRING] len 7: 'Trident'  
\*Oct 9 04:16:51.148: HTTP: token [OTHER ] len 1: '/'  
\*Oct 9 04:16:51.148: HTTP: token [STRING] len 1: '4'  
\*Oct 9 04:16:51.148: HTTP: token [OTHER ] len 1: '.'  
\*Oct 9 04:16:51.148: HTTP: token [STRING] len 1: '0'  
\*Oct 9 04:16:51.148: HTTP: token [OTHER ] len 1: ';'   
\*Oct 9 04:16:51.148: HTTP: token [SPACE ] len 1: '  
\*Oct 9 04:16:51.148: HTTP: token [STRING] len 5: 'SLCC2'  
\*Oct 9 04:16:51.148: HTTP: token [OTHER ] len 1: ';'   
\*Oct 9 04:16:51.148: HTTP: token [SPACE ] len 1: '  
\*Oct 9 04:16:51.148: HTTP: token [OTHER ] len 1: '.'  
\*Oct 9 04:16:51.148: HTTP: token [STRING] len 3: 'NET'  
\*Oct 9 04:16:51.148: HTTP: token [SPACE ] len 1: '  
\*Oct 9 04:16:51.148: HTTP: token [STRING] len 3: 'CLR'  
\*Oct 9 04:16:51.148: HTTP: token [SPACE ] len 1: '  
\*Oct 9 04:16:51.148: HTTP: token [STRING] len 1: '2'  
\*Oct 9 04:16:51.148: HTTP: token [OTHER ] len 1: '.'  
\*Oct 9 04:16:51.148: HTTP: token [STRING] len 1: '0'

```

*Oct 9 04:16:51.148: HTTP: token [OTHER ] len 1: '.'
*Oct 9 04:16:51.148: HTTP: token [STRING] len 5: '50727'
*Oct 9 04:16:51.148: HTTP: token [OTHER ] len 1: ';'
*Oct 9 04:16:51.148: HTTP: token [SPACE ] len 1: ' '
*Oct 9 04:16:51.148: HTTP: token [OTHER ] len 1: '.'
*Oct 9 04:16:51.148: HTTP: token [STRING] len 3: 'NET'
*Oct 9 04:16:51.148: HTTP: token [SPACE ] len 1: ' '
*Oct 9 04:16:51.149: HTTP: token [STRING] len 3: 'CLR'
*Oct 9 04:16:51.149: HTTP: token [SPACE ] len 1: ' '
*Oct 9 04:16:51.149: HTTP: token [STRING] len 1: '3'
*Oct 9 04:16:51.149: HTTP: token [OTHER ] len 1: '.'
*Oct 9 04:16:51.149: HTTP: token [STRING] len 1: '5'
*Oct 9 04:16:51.149: HTTP: token [OTHER ] len 1: '.'
*Oct 9 04:16:51.149: HTTP: token [STRING] len 5: '30729'
*Oct 9 04:16:51.149: HTTP: token [OTHER ] len 1: ';'
*Oct 9 04:16:51.149: HTTP: token [SPACE ] len 1: ' '
*Oct 9 04:16:51.149: HTTP: token [OTHER ] len 1: '.'
*Oct 9 04:16:51.149: HTTP: token [STRING] len 3: 'NET'
*Oct 9 04:16:51.149: HTTP: token [SPACE ] len 1: ' '
*Oct 9 04:16:51.149: HTTP: token [STRING] len 3: 'CLR'
*Oct 9 04:16:51.149: HTTP: token [SPACE ] len 1: ' '
*Oct 9 04:16:51.149: HTTP: token [STRING] len 1: '3'
*Oct 9 04:16:51.149: HTTP: token [OTHER ] len 1: '.'
*Oct 9 04:16:51.149: HTTP: token [STRING] len 1: '0'
*Oct 9 04:16:51.149: HTTP: token [OTHER ] len 1: '.'
*Oct 9 04:16:51.149: HTTP: token [STRING] len 5: '30729'
*Oct 9 04:16:51.149: HTTP: token [OTHER ] len 1: ';'
*Oct 9 04:16:51.149: HTTP: token [SPACE ] len 1: ' '
*Oct 9 04:16:51.149: HTTP: token [STRING] len 5: 'Media'
*Oct 9 04:16:51.149: HTTP: token [SPACE ] len 1: ' '
*Oct 9 04:16:51.149: HTTP: token [STRING] len 6: 'Center'
*Oct 9 04:16:51.149: HTTP: token [SPACE ] len 1: ' '
*Oct 9 04:16:51.149: HTTP: token [STRING] len 2: 'PC'
*Oct 9 04:16:51.149: HTTP: token [SPACE ] len 1: ' '
*Oct 9 04:16:51.149: HTTP: token [STRING] len 1: '6'
*Oct 9 04:16:51.149: HTTP: token [OTHER ] len 1: '.'
*Oct 9 04:16:51.149: HTTP: token [STRING] len 1: '0'
*Oct 9 04:16:51.149: HTTP: token [OTHER ] len 1: ')'
*Oct 9 04:16:51.149: HTTP: token [CRLF ] len 2: '\15\12'
*Oct 9 04:16:51.149: HTTP: token [STRING] len 6: 'Accept'
*Oct 9 04:16:51.149: HTTP: token [OTHER ] len 1: '-'
*Oct 9 04:16:51.149: HTTP: token [STRING] len 8: 'Encoding'
*Oct 9 04:16:51.149: HTTP: token [OTHER ] len 1: ':'
*Oct 9 04:16:51.149: HTTP: token [SPACE ] len 1: ' '
*Oct 9 04:16:51.149: HTTP: token [STRING] len 4: 'gzip'
*Oct 9 04:16:51.149: HTTP: token [OTHER ] len 1: ','
*Oct 9 04:16:51.149: HTTP: token [SPACE ] len 1: ' '
*Oct 9 04:16:51.149: HTTP: token [STRING] len 7: 'deflate'
*Oct 9 04:16:51.149: HTTP: token [CRLF ] len 2: '\15\12'
*Oct 9 04:16:51.149: HTTP: token [STRING] len 4: 'Host'
*Oct 9 04:16:51.149: HTTP: token [OTHER ] len 1: ':'
*Oct 9 04:16:51.149: HTTP: token [SPACE ] len 1: ' '
*Oct 9 04:16:51.149: HTTP: token [STRING] len 3: '192'
*Oct 9 04:16:51.149: HTTP: token [OTHER ] len 1: '.'
*Oct 9 04:16:51.149: HTTP: token [STRING] len 3: '168'
*Oct 9 04:16:51.149: HTTP: token [OTHER ] len 1: '.'
*Oct 9 04:16:51.149: HTTP: token [STRING] len 3: '200'
*Oct 9 04:16:51.149: HTTP: token [OTHER ] len 1: '.'
*Oct 9 04:16:51.149: HTTP: token [STRING] len 1: '1'
*Oct 9 04:16:51.149: HTTP: token [CRLF ] len 2: '\15\12'
*Oct 9 04:16:51.149: WA-HTTPD: Cal [20.20.20.6 ] Parse GET,
src [20.20.20.6] dst [192.168.200.1] url [http://192.168.200.1/wireless]
*Oct 9 04:16:51.149: WA-STATE: Cal [20.20.20.6 ] State
INIT -> LOGIN

```

```
*Oct 9 04:16:51.149: WA-TIMER: Cal      [20.20.20.6    ] State timer
restart (120 secs)
*Oct 9 04:16:51.149: WA-PAGE : Cal      [20.20.20.6    ] 50164 Sending
Consent login form, len 1477
*Oct 9 04:16:51.149: WA-IO   : Cal      [20.20.20.6    ] 50164/0 IO
state READING -> WRITING
*Oct 9 04:16:51.149: WA-IO   : Cal      [20.20.20.6    ] 50164/0 Write
event, buffer addr 0x975629F0, length 1641, cursor 0
*Oct 9 04:16:51.149: WA-IO   : Cal      [20.20.20.6    ] 50164/0 Write
event, Write blocked, cursor 1460
*Oct 9 04:16:51.353: WA-QLFY : Cal      [20.20.20.6    ] Ingress qlfy,
Session found, ACL in-place, mac [0021.6a89.51ca], intercept
*Oct 9 04:16:51.353: WA-IO   : Cal      [20.20.20.6    ] 50164/0 Write
event, buffer addr 0x975629F0, length 1641, cursor 1460
*Oct 9 04:16:51.354: WA-IO   : Cal      [20.20.20.6    ] 50164/0 IO state
WRITING -> END
*Oct 9 04:16:51.354: WA-HTTPD: Cal      [20.20.20.6    ] 50164/0 Remove
IO ctx and close socket, id [6B00002B]
*Oct 9 04:16:51.354: WA-CLNT : Cal      [20.20.20.6    ] 50164 Client conn
timer start [0021.6a89.51ca] ioctx [6B00002B]
*Oct 9 04:16:51.360: WA-QLFY : Cal      [20.20.20.6    ] Ingress qlfy,
Session found, ACL in-place, mac [0021.6a89.51ca], intercept
*Oct 9 04:16:51.360: WA-QLFY : Cal      [20.20.20.6    ] Ingress qlfy,
Session found, ACL in-place, mac [0021.6a89.51ca], intercept
*Oct 9 04:16:51.361: WA-INFT : Cal      [20.20.20.6    ] 50164 TCP FIN,
dport 80
*Oct 9 04:16:53.460: WA-QLFY : Cal      [20.20.20.6    ] Ingress qlfy,
Session found, ACL in-place, mac [0021.6a89.51ca], intercept
*Oct 9 04:16:53.460: WA-INFT : Cal      [20.20.20.6    ] 50165 TCP SYN [2],
dport 443, LOGIN state
*Oct 9 04:16:53.464: WA-QLFY : Cal      [20.20.20.6    ] Ingress qlfy,
Session found, ACL in-place, mac [0021.6a89.51ca], intercept
*Oct 9 04:16:53.464: WA-HTTPD: Cal      [20.20.20.6    ] 50165/0 HTTP
Intercept, New fd 0, sport [50165], info hdl [0x3D00000B], mac [0021.6a89.51ca]
*Oct 9 04:16:53.464: WA-HTTPD: Cal      [20.20.20.6    ] 50165/0 Create
IO ctx, id [AB00002C], pid 208
*Oct 9 04:16:53.464: WA-CLNT : Cal      [20.20.20.6    ] 50165 Client
conn add [0021.6a89.51ca] ioctx [AB00002C] #2 pid 208
*Oct 9 04:16:53.464: WA-IO   : Cal      [20.20.20.6    ] 50165/0 IO state
NEW -> SSL_HANDSHAKING
*Oct 9 04:16:53.470: WA-QLFY : Cal      [20.20.20.6    ] Ingress qlfy,
Session found, ACL in-place, mac [0021.6a89.51ca], intercept
*Oct 9 04:16:53.474: WA-QLFY : Cal      [20.20.20.6    ] Ingress qlfy,
Session found, ACL in-place, mac [0021.6a89.51ca], intercept
*Oct 9 04:16:53.478: WA-IO   : Cal      [20.20.20.6    ] 50165/0 IO state
SSL_HANDSHAKING -> READING
*Oct 9 04:16:53.478: WA-IO   : Cal      [20.20.20.6    ] 50165/0 Read event,
read buffer addr 0x97546DF4, length 2048, cursor 0
*Oct 9 04:16:53.478: WA-IO   : Cal      [20.20.20.6    ] 50165/0 Read event,
Read blocked, cursor 0
*Oct 9 04:16:53.622: WA-QLFY : Cal      [20.20.20.6    ] Ingress qlfy, Session
found, ACL in-place, mac [0021.6a89.51ca], intercept
*Oct 9 04:16:53.622: WA-INFT : Cal      [20.20.20.6    ] 50165 TCP FIN,
dport 443
*Oct 9 04:16:53.622: WA-IO   : Cal      [20.20.20.6    ] 50165/0 Read event,
read buffer addr 0x97546DF4, length 2048, cursor 0
*Oct 9 04:16:53.622: %HTTPS: SSL read fail (-6992)
*Oct 9 04:16:53.622: WA-ERROR: Cal      [20.20.20.6    ] 50165/0 Read event,
Socket read error [ERROR] errno=5
*Oct 9 04:16:53.622: WA-HTTPD: Cal      [20.20.20.6    ] 50165/0 Remove IO
ctx and close
socket, id [AB00002C]
*Oct 9 04:16:53.622: WA-HTTPD: Cal      [20.20.20.6    ] 50165/0 Remove IO
ctx - Closed
```



SSL connection

```
*Oct 9 04:16:53.623: WA-CLNT : Ca1          [20.20.20.6      ] 50165 Client conn
timer start
[0021.6a89.51ca] ioctx [AB00002C]
*Oct 9 04:16:53.635: WA-QLFY : Ca1          [20.20.20.6      ] Ingress qlfy,
Session found, ACL in-place, mac [0021.6a89.51ca], intercept
*Oct 9 04:16:54.943: WA-QLFY : Ca1          [20.20.20.6      ] Ingress qlfy,
Session found, ACL in-place, mac [0021.6a89.51ca], intercept
*Oct 9 04:16:54.943: WA-INFT : Ca1          [20.20.20.6      ] 50166 TCP SYN [3],
dport 443, LOGIN state
*Oct 9 04:16:54.947: WA-QLFY : Ca1          [20.20.20.6      ] Ingress qlfy,
Session found, ACL in-place, mac [0021.6a89.51ca], intercept
*Oct 9 04:16:54.947: WA-HTTPD: Ca1          [20.20.20.6      ] 50166/0 HTTP
Intercept, New fd 0, sport [50166], info hdl [0x3D00000B], mac [0021.6a89.51ca]
*Oct 9 04:16:54.947: WA-HTTPD: Ca1          [20.20.20.6      ] 50166/0 Create
IO ctx, id [E300002D], pid 208
*Oct 9 04:16:54.947: WA-CLNT : Ca1          [20.20.20.6      ] 50166 Client conn add
[0021.6a89.51ca] ioctx [E300002D] #3 pid 208
*Oct 9 04:16:54.947: WA-IO   : Ca1          [20.20.20.6      ] 50166/0 IO state
NEW -> SSL_HANDSHAKING
*Oct 9 04:16:54.947: WA-QLFY : Ca1          [20.20.20.6      ] Ingress qlfy,
Session found, ACL in-place, mac [0021.6a89.51ca], intercept
*Oct 9 04:16:54.952: WA-QLFY : Ca1          [20.20.20.6      ] Ingress qlfy,
Session found, ACL in-place, mac [0021.6a89.51ca], intercept
*Oct 9 04:16:54.955: WA-IO   : Ca1          [20.20.20.6      ] 50166/0 IO state
SSL_HANDSHAKING -> READING
*Oct 9 04:16:54.955: WA-IO   : Ca1          [20.20.20.6      ] 50166/0 Read event,
read buffer addr 0x97577F50, length 2048, cursor 0
*Oct 9 04:16:54.956: WA-IO   : Ca1          [20.20.20.6      ] 50166/0 Read event,
Read blocked, cursor 0
*Oct 9 04:16:54.971: WA-QLFY : Ca1          [20.20.20.6      ] Ingress qlfy,
Session found, ACL in-place, mac [0021.6a89.51ca], intercept
*Oct 9 04:16:54.971: WA-INFT : Ca1          [20.20.20.6      ] 50166 TCP FIN,
dport 443
*Oct 9 04:16:54.971: WA-IO   : Ca1          [20.20.20.6      ] 50166/0 Read event,
read buffer addr 0x97577F50, length 2048, cursor 0
*Oct 9 04:16:54.971: %HTTPS: SSL read fail (-6992)
*Oct 9 04:16:54.971: WA-ERROR: Ca1          [20.20.20.6      ] 50166/0 Read event,
Socket read error [ERROR] errno=5
*Oct 9 04:16:54.971: WA-HTTPD: Ca1          [20.20.20.6      ] 50166/0 Remove IO
ctx and close socket, id [E300002D]
*Oct 9 04:16:54.971: WA-HTTPD: Ca1          [20.20.20.6      ] 50166/0 Remove IO
ctx - Closed SSL connection
*Oct 9 04:16:54.971: WA-CLNT : Ca1          [20.20.20.6      ] 50166 Client conn
timer start [0021.6a89.51ca] ioctx [E300002D]
*Oct 9 04:16:54.972: WA-QLFY : Ca1          [20.20.20.6      ] Ingress qlfy,
Session found, ACL in-place, mac [0021.6a89.51ca], intercept
*Oct 9 04:16:54.972: WA-INFT : Ca1          [20.20.20.6      ] 50167 TCP SYN [4],
dport 443, LOGIN state
*Oct 9 04:16:54.978: WA-QLFY : Ca1          [20.20.20.6      ] Ingress qlfy,
Session found, ACL in-place, mac [0021.6a89.51ca], intercept
*Oct 9 04:16:54.978: WA-QLFY : Ca1          [20.20.20.6      ] Ingress qlfy,
Session found, ACL in-place, mac [0021.6a89.51ca], intercept
*Oct 9 04:16:54.978: WA-HTTPD: Ca1          [20.20.20.6      ] 50167/0 HTTP
Intercept, New fd 0, sport [50167], info hdl [0x3D00000B], mac [0021.6a89.51ca]
*Oct 9 04:16:54.978: WA-HTTPD: Ca1          [20.20.20.6      ] 50167/0 Create IO
ctx, id [3B00002E], pid 208
*Oct 9 04:16:54.978: WA-CLNT : Ca1          [20.20.20.6      ] 50167 Client conn
add [0021.6a89.51ca] ioctx [3B00002E] #4 pid 208
*Oct 9 04:16:54.978: WA-IO   : Ca1          [20.20.20.6      ] 50167/0 IO state
NEW -> SSL_HANDSHAKING
*Oct 9 04:16:54.978: WA-QLFY : Ca1          [20.20.20.6      ] Ingress qlfy,
Session found, ACL in-place, mac [0021.6a89.51ca], intercept
*Oct 9 04:16:54.985: WA-QLFY : Ca1          [20.20.20.6      ] Ingress qlfy,
```

```
Session found, ACL in-place, mac [0021.6a89.51ca], intercept
*Oct 9 04:16:54.988: WA-IO : Ca1 [20.20.20.6 ] 50167/0 IO state
SSL_HANDSHAKING -> READING
*Oct 9 04:16:54.988: WA-IO : Ca1 [20.20.20.6 ] 50167/0 Read event,
read buffer addr 0x97546DF4, length 2048, cursor 0
*Oct 9 04:16:54.989: WA-IO : Ca1 [20.20.20.6 ] 50167/0 Read event,
Read blocked, cursor 0
*Oct 9 04:16:55.004: WA-QLFY : Ca1 [20.20.20.6 ] Ingress qlfy,
Session found, ACL in-place, mac [0021.6a89.51ca], intercept
*Oct 9 04:16:55.004: WA-IO : Ca1 [20.20.20.6 ] 50167/0 Read event,
read buffer addr 0x97546DF4, length 2048, cursor 0
*Oct 9 04:16:55.004: WA-IO : Ca1 [20.20.20.6 ] 50167/0 Read event,
Read blocked, cursor 555
*Oct 9 04:16:55.004: WA-IO : Ca1 [20.20.20.6 ] 50167/0 Read event,
Message ready
*Oct 9 04:16:55.004: HTTP: token [STRING] len 4: 'POST'
*Oct 9 04:16:55.004: WA-CLNT : Ca1 [20.20.20.6 ] 50167 Client conn
set authc ctx [0021.6a89.51ca] ioctx [3B00002E]
*Oct 9 04:16:55.004: HTTP: token [SPACE ] len 1: ' '
*Oct 9 04:16:55.004: HTTP: token [OTHER ] len 1: '/'
*Oct 9 04:16:55.004: HTTP: token [SPACE ] len 1: ' '
*Oct 9 04:16:55.004: HTTP: token [STRING] len 4: 'HTTP'
*Oct 9 04:16:55.004: HTTP: token [OTHER ] len 1: '/'
*Oct 9 04:16:55.004: HTTP: token [STRING] len 1: '1'
*Oct 9 04:16:55.004: HTTP: token [OTHER ] len 1: '.'
*Oct 9 04:16:55.004: HTTP: token [STRING] len 1: '1'
*Oct 9 04:16:55.004: HTTP: token [CRLF ] len 2: '\15\12'
*Oct 9 04:16:55.004: HTTP: token [STRING] len 6: 'Accept'
*Oct 9 04:16:55.004: HTTP: token [OTHER ] len 1: ':'
*Oct 9 04:16:55.004: HTTP: token [SPACE ] len 1: ' '
*Oct 9 04:16:55.004: HTTP: token [STRING] len 5: 'image'
*Oct 9 04:16:55.004: HTTP: token [OTHER ] len 1: '/'
*Oct 9 04:16:55.004: HTTP: token [STRING] len 4: 'jpeg'
*Oct 9 04:16:55.004: HTTP: token [OTHER ] len 1: ','
*Oct 9 04:16:55.004: HTTP: token [SPACE ] len 1: ' '
*Oct 9 04:16:55.004: HTTP: token [STRING] len 11: 'application'
*Oct 9 04:16:55.004: HTTP: token [OTHER ] len 1: '/'
*Oct 9 04:16:55.004: HTTP: token [STRING] len 1: 'x'
*Oct 9 04:16:55.004: HTTP: token [OTHER ] len 1: '-'
*Oct 9 04:16:55.004: HTTP: token [STRING] len 2: 'ms'
*Oct 9 04:16:55.005: HTTP: token [OTHER ] len 1: '-'
*Oct 9 04:16:55.005: HTTP: token [STRING] len 11: 'application'
*Oct 9 04:16:55.005: HTTP: token [OTHER ] len 1: ','
*Oct 9 04:16:55.005: HTTP: token [SPACE ] len 1: ' '
*Oct 9 04:16:55.005: HTTP: token [STRING] len 5: 'image'
*Oct 9 04:16:55.005: HTTP: token [OTHER ] len 1: '/'
*Oct 9 04:16:55.005: HTTP: token [STRING] len 3: 'gif'
*Oct 9 04:16:55.005: HTTP: token [OTHER ] len 1: ','
*Oct 9 04:16:55.005: HTTP: token [SPACE ] len 1: ' '
*Oct 9 04:16:55.005: HTTP: token [STRING] len 11: 'application'
*Oct 9 04:16:55.005: HTTP: token [OTHER ] len 1: '/'
*Oct 9 04:16:55.005: HTTP: token [STRING] len 4: 'xaml'
*Oct 9 04:16:55.005: HTTP: token [OTHER ] len 1: '+'
*Oct 9 04:16:55.005: HTTP: token [STRING] len 3: 'xml'
*Oct 9 04:16:55.005: HTTP: token [OTHER ] len 1: ','
*Oct 9 04:16:55.005: HTTP: token [SPACE ] len 1: ' '
*Oct 9 04:16:55.005: HTTP: token [STRING] len 5: 'image'
*Oct 9 04:16:55.005: HTTP: token [OTHER ] len 1: '/'
*Oct 9 04:16:55.005: HTTP: token [STRING] len 5: 'pjpeg'
*Oct 9 04:16:55.005: HTTP: token [OTHER ] len 1: ','
*Oct 9 04:16:55.005: HTTP: token [SPACE ] len 1: ' '
*Oct 9 04:16:55.005: HTTP: token [STRING] len 11: 'application'
*Oct 9 04:16:55.005: HTTP: token [OTHER ] len 1: '/'
*Oct 9 04:16:55.005: HTTP: token [STRING] len 1: 'x'
```

\*Oct 9 04:16:55.005: HTTP: token [OTHER ] len 1: '-'  
\*Oct 9 04:16:55.005: HTTP: token [STRING] len 2: 'ms'  
\*Oct 9 04:16:55.005: HTTP: token [OTHER ] len 1: '-'  
\*Oct 9 04:16:55.005: HTTP: token [STRING] len 4: 'xbap'  
\*Oct 9 04:16:55.005: HTTP: token [OTHER ] len 1: ','  
\*Oct 9 04:16:55.005: HTTP: token [SPACE ] len 1: '  
\*Oct 9 04:16:55.005: HTTP: token [OTHER ] len 1: '\*'  
\*Oct 9 04:16:55.005: HTTP: token [OTHER ] len 1: '/'  
\*Oct 9 04:16:55.005: HTTP: token [OTHER ] len 1: '\*'  
\*Oct 9 04:16:55.005: HTTP: token [CRLF ] len 2: '\\15\\12'  
\*Oct 9 04:16:55.005: HTTP: token [STRING] len 4: 'User'  
\*Oct 9 04:16:55.005: HTTP: token [OTHER ] len 1: '-'  
\*Oct 9 04:16:55.005: HTTP: token [STRING] len 5: 'Agent'  
\*Oct 9 04:16:55.005: HTTP: token [OTHER ] len 1: ':'  
\*Oct 9 04:16:55.005: HTTP: token [SPACE ] len 1: '  
\*Oct 9 04:16:55.005: HTTP: token [STRING] len 7: 'Mozilla'  
\*Oct 9 04:16:55.005: HTTP: token [OTHER ] len 1: '/'  
\*Oct 9 04:16:55.005: HTTP: token [STRING] len 1: '4'  
\*Oct 9 04:16:55.005: HTTP: token [OTHER ] len 1: '.'  
\*Oct 9 04:16:55.005: HTTP: token [STRING] len 1: '0'  
\*Oct 9 04:16:55.005: HTTP: token [SPACE ] len 1: '  
\*Oct 9 04:16:55.005: HTTP: token [OTHER ] len 1: '('  
\*Oct 9 04:16:55.005: HTTP: token [STRING] len 10: 'compatible'  
\*Oct 9 04:16:55.005: HTTP: token [OTHER ] len 1: ';'   
\*Oct 9 04:16:55.005: HTTP: token [SPACE ] len 1: '  
\*Oct 9 04:16:55.005: HTTP: token [STRING] len 4: 'MSIE'  
\*Oct 9 04:16:55.005: HTTP: token [SPACE ] len 1: '  
\*Oct 9 04:16:55.005: HTTP: token [STRING] len 1: '8'  
\*Oct 9 04:16:55.005: HTTP: token [OTHER ] len 1: '.'  
\*Oct 9 04:16:55.005: HTTP: token [STRING] len 1: '0'  
\*Oct 9 04:16:55.005: HTTP: token [OTHER ] len 1: ';'   
\*Oct 9 04:16:55.005: HTTP: token [SPACE ] len 1: '  
\*Oct 9 04:16:55.005: HTTP: token [STRING] len 7: 'Windows'  
\*Oct 9 04:16:55.005: HTTP: token [SPACE ] len 1: '  
\*Oct 9 04:16:55.005: HTTP: token [STRING] len 2: 'NT'  
\*Oct 9 04:16:55.005: HTTP: token [SPACE ] len 1: '  
\*Oct 9 04:16:55.005: HTTP: token [STRING] len 1: '6'  
\*Oct 9 04:16:55.005: HTTP: token [OTHER ] len 1: '.'  
\*Oct 9 04:16:55.005: HTTP: token [STRING] len 1: '1'  
\*Oct 9 04:16:55.005: HTTP: token [OTHER ] len 1: ';'   
\*Oct 9 04:16:55.005: HTTP: token [SPACE ] len 1: '  
\*Oct 9 04:16:55.005: HTTP: token [STRING] len 7: 'Trident'  
\*Oct 9 04:16:55.005: HTTP: token [OTHER ] len 1: '/'  
\*Oct 9 04:16:55.005: HTTP: token [STRING] len 1: '4'  
\*Oct 9 04:16:55.005: HTTP: token [OTHER ] len 1: '.'  
\*Oct 9 04:16:55.005: HTTP: token [STRING] len 1: '0'  
\*Oct 9 04:16:55.005: HTTP: token [OTHER ] len 1: ';'   
\*Oct 9 04:16:55.005: HTTP: token [SPACE ] len 1: '  
\*Oct 9 04:16:55.005: HTTP: token [STRING] len 5: 'SLCC2'  
\*Oct 9 04:16:55.005: HTTP: token [OTHER ] len 1: ';'   
\*Oct 9 04:16:55.005: HTTP: token [SPACE ] len 1: '  
\*Oct 9 04:16:55.005: HTTP: token [OTHER ] len 1: '.'  
\*Oct 9 04:16:55.005: HTTP: token [STRING] len 3: 'NET'  
\*Oct 9 04:16:55.005: HTTP: token [SPACE ] len 1: '  
\*Oct 9 04:16:55.005: HTTP: token [STRING] len 3: 'CLR'  
\*Oct 9 04:16:55.005: HTTP: token [SPACE ] len 1: '  
\*Oct 9 04:16:55.005: HTTP: token [STRING] len 1: '2'  
\*Oct 9 04:16:55.005: HTTP: token [OTHER ] len 1: '.'  
\*Oct 9 04:16:55.005: HTTP: token [STRING] len 1: '0'  
\*Oct 9 04:16:55.005: HTTP: token [OTHER ] len 1: '.'  
\*Oct 9 04:16:55.005: HTTP: token [STRING] len 5: '50727'  
\*Oct 9 04:16:55.005: HTTP: token [OTHER ] len 1: ';'   
\*Oct 9 04:16:55.005: HTTP: token [SPACE ] len 1: '  
\*Oct 9 04:16:55.005: HTTP: token [OTHER ] len 1: '.'

\*Oct 9 04:16:55.005: HTTP: token [STRING] len 3: 'NET'  
\*Oct 9 04:16:55.005: HTTP: token [SPACE ] len 1: ' '  
\*Oct 9 04:16:55.005: HTTP: token [STRING] len 3: 'CLR'  
\*Oct 9 04:16:55.005: HTTP: token [SPACE ] len 1: ' '  
\*Oct 9 04:16:55.005: HTTP: token [STRING] len 1: '3'  
\*Oct 9 04:16:55.005: HTTP: token [OTHER ] len 1: '.'  
\*Oct 9 04:16:55.005: HTTP: token [STRING] len 1: '5'  
\*Oct 9 04:16:55.005: HTTP: token [OTHER ] len 1: '.'  
\*Oct 9 04:16:55.005: HTTP: token [STRING] len 5: '30729'  
\*Oct 9 04:16:55.005: HTTP: token [OTHER ] len 1: ';'   
\*Oct 9 04:16:55.005: HTTP: token [SPACE ] len 1: ' '  
\*Oct 9 04:16:55.005: HTTP: token [OTHER ] len 1: '.'  
\*Oct 9 04:16:55.005: HTTP: token [STRING] len 3: 'NET'  
\*Oct 9 04:16:55.005: HTTP: token [SPACE ] len 1: ' '  
\*Oct 9 04:16:55.005: HTTP: token [STRING] len 3: 'CLR'  
\*Oct 9 04:16:55.005: HTTP: token [SPACE ] len 1: ' '  
\*Oct 9 04:16:55.005: HTTP: token [STRING] len 1: '3'  
\*Oct 9 04:16:55.005: HTTP: token [OTHER ] len 1: '.'  
\*Oct 9 04:16:55.005: HTTP: token [STRING] len 1: '0'  
\*Oct 9 04:16:55.005: HTTP: token [OTHER ] len 1: '.'  
\*Oct 9 04:16:55.005: HTTP: token [STRING] len 5: '30729'  
\*Oct 9 04:16:55.005: HTTP: token [OTHER ] len 1: ';'   
\*Oct 9 04:16:55.005: HTTP: token [SPACE ] len 1: ' '  
\*Oct 9 04:16:55.005: HTTP: token [STRING] len 5: 'Media'  
\*Oct 9 04:16:55.005: HTTP: token [SPACE ] len 1: ' '  
\*Oct 9 04:16:55.005: HTTP: token [STRING] len 6: 'Center'  
\*Oct 9 04:16:55.005: HTTP: token [SPACE ] len 1: ' '  
\*Oct 9 04:16:55.005: HTTP: token [STRING] len 2: 'PC'  
\*Oct 9 04:16:55.005: HTTP: token [SPACE ] len 1: ' '  
\*Oct 9 04:16:55.005: HTTP: token [STRING] len 1: '6'  
\*Oct 9 04:16:55.005: HTTP: token [OTHER ] len 1: '.'  
\*Oct 9 04:16:55.005: HTTP: token [STRING] len 1: '0'  
\*Oct 9 04:16:55.005: HTTP: token [OTHER ] len 1: ')'   
\*Oct 9 04:16:55.005: HTTP: token [CRLF ] len 2: '\\15\\12'  
\*Oct 9 04:16:55.005: HTTP: token [STRING] len 7: 'Content'  
\*Oct 9 04:16:55.005: HTTP: token [OTHER ] len 1: '-'   
\*Oct 9 04:16:55.005: HTTP: token [STRING] len 4: 'Type'  
\*Oct 9 04:16:55.006: HTTP: token [OTHER ] len 1: ':'   
\*Oct 9 04:16:55.006: HTTP: token [SPACE ] len 1: ' '  
\*Oct 9 04:16:55.006: HTTP: token [STRING] len 11: 'application'  
\*Oct 9 04:16:55.006: HTTP: token [OTHER ] len 1: '/'   
\*Oct 9 04:16:55.006: HTTP: token [STRING] len 1: 'x'  
\*Oct 9 04:16:55.006: HTTP: token [OTHER ] len 1: '-'   
\*Oct 9 04:16:55.006: HTTP: token [STRING] len 3: 'www'  
\*Oct 9 04:16:55.006: HTTP: token [OTHER ] len 1: '-'   
\*Oct 9 04:16:55.006: HTTP: token [STRING] len 4: 'form'  
\*Oct 9 04:16:55.006: HTTP: token [OTHER ] len 1: '-'   
\*Oct 9 04:16:55.006: HTTP: token [STRING] len 10: 'urlencoded'  
\*Oct 9 04:16:55.006: HTTP: token [CRLF ] len 2: '\\15\\12'  
\*Oct 9 04:16:55.006: HTTP: token [STRING] len 6: 'Accept'  
\*Oct 9 04:16:55.006: HTTP: token [OTHER ] len 1: '-'   
\*Oct 9 04:16:55.006: HTTP: token [STRING] len 8: 'Encoding'  
\*Oct 9 04:16:55.006: HTTP: token [OTHER ] len 1: ':'   
\*Oct 9 04:16:55.006: HTTP: token [SPACE ] len 1: ' '  
\*Oct 9 04:16:55.006: HTTP: token [STRING] len 4: 'gzip'  
\*Oct 9 04:16:55.006: HTTP: token [OTHER ] len 1: ','   
\*Oct 9 04:16:55.006: HTTP: token [SPACE ] len 1: ' '  
\*Oct 9 04:16:55.006: HTTP: token [STRING] len 7: 'deflate'  
\*Oct 9 04:16:55.006: HTTP: token [CRLF ] len 2: '\\15\\12'  
\*Oct 9 04:16:55.006: HTTP: token [STRING] len 4: 'Host'  
\*Oct 9 04:16:55.006: HTTP: token [OTHER ] len 1: ':'   
\*Oct 9 04:16:55.006: HTTP: token [SPACE ] len 1: ' '  
\*Oct 9 04:16:55.006: HTTP: token [STRING] len 3: '192'  
\*Oct 9 04:16:55.006: HTTP: token [OTHER ] len 1: '.'

```

*Oct 9 04:16:55.006: HTTP: token [STRING] len 3: '168'
*Oct 9 04:16:55.006: HTTP: token [OTHER ] len 1: '.'
*Oct 9 04:16:55.006: HTTP: token [STRING] len 3: '200'
*Oct 9 04:16:55.006: HTTP: token [OTHER ] len 1: '.'
*Oct 9 04:16:55.006: HTTP: token [STRING] len 1: '1'
*Oct 9 04:16:55.006: HTTP: token [CRLF ] len 2: '\15\12'
*Oct 9 04:16:55.006: HTTP: token [STRING] len 7: 'Content'
*Oct 9 04:16:55.006: HTTP: token [OTHER ] len 1: '-'
*Oct 9 04:16:55.006: HTTP: token [STRING] len 6: 'Length'
*Oct 9 04:16:55.006: HTTP: token [OTHER ] len 1: ':'
*Oct 9 04:16:55.006: HTTP: token [SPACE ] len 1: ' '
*Oct 9 04:16:55.006: HTTP: token [STRING] len 2: '52'
*Oct 9 04:16:55.006: HTTP: token [CRLF ] len 2: '\15\12'
*Oct 9 04:16:55.006: HTTP: token [STRING] len 10: 'Connection'
*Oct 9 04:16:55.006: HTTP: token [OTHER ] len 1: ':'
*Oct 9 04:16:55.006: HTTP: token [SPACE ] len 1: ' '
*Oct 9 04:16:55.006: HTTP: token [STRING] len 4: 'Keep'
*Oct 9 04:16:55.006: HTTP: token [OTHER ] len 1: '-'
*Oct 9 04:16:55.006: HTTP: token [STRING] len 5: 'Alive'
*Oct 9 04:16:55.006: HTTP: token [CRLF ] len 2: '\15\12'
*Oct 9 04:16:55.006: HTTP: token [STRING] len 5: 'Cache'
*Oct 9 04:16:55.006: HTTP: token [OTHER ] len 1: '-'
*Oct 9 04:16:55.006: HTTP: token [STRING] len 7: 'Control'
*Oct 9 04:16:55.006: HTTP: token [OTHER ] len 1: ':'
*Oct 9 04:16:55.006: HTTP: token [SPACE ] len 1: ' '
*Oct 9 04:16:55.006: HTTP: token [STRING] len 2: 'no'
*Oct 9 04:16:55.006: HTTP: token [OTHER ] len 1: '-'
*Oct 9 04:16:55.006: HTTP: token [STRING] len 5: 'cache'
*Oct 9 04:16:55.006: HTTP: token [CRLF ] len 2: '\15\12'
*Oct 9 04:16:55.006: HTTP: token [STRING] len 6: 'Accept'
*Oct 9 04:16:55.006: HTTP: token [OTHER ] len 1: '-'
*Oct 9 04:16:55.006: HTTP: token [STRING] len 8: 'Language'
*Oct 9 04:16:55.006: HTTP: token [OTHER ] len 1: ':'
*Oct 9 04:16:55.006: HTTP: token [SPACE ] len 1: ' '
*Oct 9 04:16:55.006: HTTP: token [STRING] len 2: 'en'
*Oct 9 04:16:55.006: HTTP: token [OTHER ] len 1: '-'
*Oct 9 04:16:55.006: HTTP: token [STRING] len 2: 'US'
*Oct 9 04:16:55.006: HTTP: token [CRLF ] len 2: '\15\12'
*Oct 9 04:16:55.006: HTTP: token [CRLF ] len 2: '\15\12'
*Oct 9 04:16:55.006: HTTP: token [STRING] len 2: 'au'
*Oct 9 04:16:55.006: HTTP: token [OTHER ] len 1: '_'
*Oct 9 04:16:55.006: HTTP: token [STRING] len 10: 'pxytimetag'
*Oct 9 04:16:55.006: HTTP: token [OTHER ] len 1: '='
*Oct 9 04:16:55.006: HTTP: token [STRING] len 10: '1023410187'
*Oct 9 04:16:55.006: HTTP: token [OTHER ] len 1: '&'
*Oct 9 04:16:55.006: HTTP: token [STRING] len 7: 'consent'
*Oct 9 04:16:55.006: HTTP: token [OTHER ] len 1: '_'
*Oct 9 04:16:55.006: HTTP: token [STRING] len 6: 'status'
*Oct 9 04:16:55.006: HTTP: token [OTHER ] len 1: '='
*Oct 9 04:16:55.006: HTTP: token [STRING] len 6: 'accept'
*Oct 9 04:16:55.006: HTTP: token [OTHER ] len 1: '&'
*Oct 9 04:16:55.006: HTTP: token [STRING] len 2: 'ok'
*Oct 9 04:16:55.006: HTTP: token [OTHER ] len 1: '='
*Oct 9 04:16:55.006: HTTP: token [STRING] len 2: 'OK'
*Oct 9 04:16:55.006: WA-HTTPD: Cal [20.20.20.6 ] 50167 Parse Consent
POST, au_pxytimetag [0x3D00000B]
*Oct 9 04:16:55.006: WA-HTTPD: Cal [20.20.20.6 ] 50167 Parse Consent
POST, consent status [accept]
*Oct 9 04:16:55.006: WA-HTTPD: Cal [20.20.20.6 ] Convey consent result
to SM, Attr mac: 0021.6a89.51ca
*Oct 9 04:16:55.006: AUTH-EVENT: [0021.6a89.51ca, Cal] Authc success from
WebAuth (3), status OK (0) / event success (0)
*Oct 9 04:16:55.006: AUTH-EVENT: [0021.6a89.51ca, Cal] Highest prio method:
INVALID, Authz method: INVALID, Conn hdl: webauth

```

\*Oct 9 04:16:55.006: AUTH-EVENT: Raised event APPLY\_USER\_PROFILE (13) on handle 0x10000016

\*Oct 9 04:16:55.006: AUTH-EVENT: Raised event RX\_METHOD\_AUTHC\_SUCCESS (3) on handle 0x10000016

\*Oct 9 04:16:55.006: AUTH-EVENT: [0021.6a89.51ca, Ca1] Queued AUTHC SUCCESS from WebAuth for session 0x10000016 (0021.6a89.51ca)

\*Oct 9 04:16:55.006: WA-HTTPD: Ca1 [20.20.20.6 ] Convey consent result to SM, [OK]

**\*Oct 9 04:16:55.006: WA-STATE: Ca1 [20.20.20.6 ] State LOGIN -> AUTHC\_SUCCESS**

\*Oct 9 04:16:55.006: WA-TIMER: Ca1 [20.20.20.6 ] State timer stop

\*Oct 9 04:16:55.006: WA-IO : Ca1 [20.20.20.6 ] 50167/0 IO state READING -> AUTHENTICATING

\*Oct 9 04:16:55.006: AUTH-EVENT: [0021.6a89.51ca, Ca1] Received internal event APPLY\_USER\_PROFILE (handle 0x10000016)

\*Oct 9 04:16:55.006: AUTH-EVENT: [0021.6a89.51ca, Ca1] Clearing AAA data for: 0021.6a89.51ca

\*Oct 9 04:16:55.006: AUTH-SYNC: [0021.6a89.51ca, Ca1] Delay add/update sync of username for 0021.6a89.51ca / 0x10000016

\*Oct 9 04:16:55.006: AUTH-EVENT: [0021.6a89.51ca, Ca1] Received User-Name 0021.6a89.51ca for client 0021.6a89.51ca

\*Oct 9 04:16:55.007: AUTH-SYNC: [0021.6a89.51ca, Ca1] Delay add/update sync of auth-domain for 0021.6a89.51ca / 0x10000016

\*Oct 9 04:16:55.007: AUTH-SYNC: [0021.6a89.51ca, Ca1] Delay add/update sync of target-scope for 0021.6a89.51ca / 0x10000016

\*Oct 9 04:16:55.007: AUTH-EVENT: [0021.6a89.51ca, Ca1] Existing AAA ID: 0x00000015

\*Oct 9 04:16:55.007: AUTH-EVENT: [0021.6a89.51ca, Ca1] Client 0021.6a89.51ca, Method webauth changing state from 'Running' to 'Authc Success'

\*Oct 9 04:16:55.007: AUTH-EVENT: [0021.6a89.51ca, Ca1] Client 0021.6a89.51ca, Context changing state from 'Running' to 'Authc Success'

\*Oct 9 04:16:55.007: AUTH-EVENT: [0021.6a89.51ca, Ca1] Non-SM policy applied for 0x10000016. Authz\_attrs not freed

\*Oct 9 04:16:55.007: AUTH-EVENT: Handling client event RX\_METHOD\_AUTHC\_SUCCESS (3) for PRE, handle 0x10000016

\*Oct 9 04:16:55.007: AUTH-SYNC: [0021.6a89.51ca, Ca1] Delay add/update sync of method for 0021.6a89.51ca / 0x10000016

\*Oct 9 04:16:55.007: AUTH-EVENT: [0021.6a89.51ca, Ca1] SM will not apply policy for RX\_METHOD\_AUTHC\_SUCCESS on 0x10000016 / 0021.6a89.51ca

\*Oct 9 04:16:55.007: AUTH-EVENT: [0021.6a89.51ca, Ca1] Processing default action(s) for event RX\_METHOD\_AUTHC\_SUCCESS for session 0x10000016.

\*Oct 9 04:16:55.007: AUTH-EVENT: [0021.6a89.51ca, Ca1] Executing default action handler for AUTHC SUCCESS (0x10000016)

\*Oct 9 04:16:55.007: AUTH-EVENT: [0021.6a89.51ca, Ca1] AUTHC\_SUCCESS - authorize by default

\*Oct 9 04:16:55.007: AUTH-EVENT: [0021.6a89.51ca, Ca1] Signalling Authz success for client 0021.6a89.51ca

\*Oct 9 04:16:55.007: AUTH-EVENT: [0021.6a89.51ca, Ca1] Client 0021.6a89.51ca, Context changing state from 'Authc Success' to 'Authz Success'

\*Oct 9 04:16:55.007: AUTH-EVENT: [0021.6a89.51ca, Ca1] Processing SM CB request for 0x10000016: Event: Authorize request (216)

\*Oct 9 04:16:55.007: %IOSXE-7-PLATFORM: 1 process wcm: 0021.6a89.51ca WEBAUTH: received authentication response, status=0 AAA ID=0 protocol=0

\*Oct 9 04:16:55.007: %IOSXE-7-PLATFORM: 1 process wcm: 0021.6a89.51ca WEBAUTH: Received message from webauth queue: 1

\*Oct 9 04:16:55.007: %IOSXE-7-PLATFORM: 1 process wcm: 0021.6a89.51ca WEBAUTH: IOS Auth Event - Authentication Success!

\*Oct 9 04:16:55.007: %IOSXE-7-PLATFORM: 1 process wcm: 0021.6a89.51ca Final flag values are, epmSendAcl 1, epmSendAclDone 0

\*Oct 9 04:16:55.007: %IOSXE-7-PLATFORM: 1 process wcm: 0021.6a89.51ca client incoming attribute size are 43

\*Oct 9 04:16:55.007: %IOSXE-7-PLATFORM: 1 process wcm: 0021.6a89.51ca WEBAUTH: received RADIUS attr type 450

\*Oct 9 04:16:55.007: %IOSXE-7-PLATFORM: 1 process wcm: 0021.6a89.51ca Username entry (0021.6a89.51ca) created for mobile

\*Oct 9 04:16:55.007: %IOSXE-7-PLATFORM: 1 process wcm: 0021.6a89.51ca WEBAUTH: Requesting post-auth policy application to EPM

\*Oct 9 04:16:55.007: %IOSXE-7-PLATFORM: 1 process wcm: 0021.6a89.51ca Send request to EPM

\*Oct 9 04:16:55.007: %IOSXE-7-PLATFORM: 1 process wcm: 0021.6a89.51ca aaa attribute list length is 43

\*Oct 9 04:16:55.007: %IOSXE-7-PLATFORM: 1 process wcm: 0021.6a89.51ca Sending Activate request for session handle 268435477 successful

\*Oct 9 04:16:55.007: %IOSXE-7-PLATFORM: 1 process wcm: 0021.6a89.51ca Post-auth policy request sent! Now wait for post-auth policy ACK from EPM

\*Oct 9 04:16:55.007: %IOSXE-7-PLATFORM: 1 process wcm: 0021.6a89.51ca Setting the epmSendAclDone flag.

\*Oct 9 04:16:55.007: %IOSXE-7-PLATFORM: 1 process wcm: 0021.6a89.51ca Change state to WEBAUTH\_NOL3SEC (14) last state WEBAUTH\_REQD (8)

\*Oct 9 04:16:55.007: %IOSXE-7-PLATFORM: 1 process wcm: 0021.6a89.51ca PEM\_UPDATE\_STATE to RUN, EPM POLICY ACK not received yet, moving client to AUTHZ\_WAIT state

\*Oct 9 04:16:55.007: %IOSXE-7-PLATFORM: 1 process wcm: 0021.6a89.51ca Change state to AUTHZ\_WAIT (19) last state WEBAUTH\_NOL3SEC (14)

\*Oct 9 04:16:55.007: %IOSXE-7-PLATFORM: 1 process wcm: wcdb\_is\_auth\_changed: Client in AUTHZ\_WAIT state, Not changing WCDB auth state

\*Oct 9 04:16:55.007: %IOSXE-7-PLATFORM: 1 process wcm: 0021.6a89.51ca Stopping deletion of Mobile Station: (callerId: 74)

\*Oct 9 04:16:55.007: %IOSXE-7-PLATFORM: 1 process wcm: 0021.6a89.51ca Session Timeout is 1800 - starting session timer for the mobile

\*Oct 9 04:16:55.007: %IOSXE-7-PLATFORM: 1 process wcm: 0021.6a89.51ca 20.20.20.6 AUTHZ\_WAIT (19) Reached PLUMBFASPATH: from line 4289

\*Oct 9 04:16:55.007: %IOSXE-7-PLATFORM: 1 process wcm: 0021.6a89.51ca 20.20.20.6 AUTHZ\_WAIT (19) Replacing Fast Path rule^M on AP c8f9.f983.4260 , slot 1 802.1P = 0^M

\*Oct 9 04:16:55.007: %IOSXE-7-PLATFORM: 1 process wcm: 0021.6a89.51ca 20.20.20.6 AUTHZ\_WAIT (19) Successfully plumbed mobile rule

\*Oct 9 04:16:55.007: %IOSXE-7-PLATFORM: 1 process wcm: 0021.6a89.51ca WEBAUTH: callback status - authentication succeeded

\*Oct 9 04:16:55.007: %IOSXE-7-PLATFORM: 1 process wcm: PEM recv processing msg Add SCB(3)

\*Oct 9 04:16:55.007: %IOSXE-7-PLATFORM: 1 process wcm: 0021.6a89.51ca 20.20.20.6, auth\_state 19 mmRole Local !!!

\*Oct 9 04:16:55.007: %IOSXE-7-PLATFORM: 1 process wcm: 0021.6a89.51ca 20.20.20.6, auth\_state 19 mmRole Local, updating wcdb not needed

\*Oct 9 04:16:55.007: %IOSXE-7-PLATFORM: 1 process wcm: 0021.6a89.51ca Tclas Plumb needed: 0

\*Oct 9 04:16:55.008: AUTH-EVENT: Raising ext evt Template Deactivated (10) on session 0x10000015, client (unknown) (0), hdl 0x00000000, attr\_list 0x5A00033F

\*Oct 9 04:16:55.008: AUTH-EVENT: SM will not send event Template Deactivated to PRE for 0x10000015

\*Oct 9 04:16:55.008: %IOSXE-7-PLATFORM: 1 process wcm: EPM: Init feature, client handle 58b5800000001c session 10000015 authz 1f000015

\*Oct 9 04:16:55.008: %IOSXE-7-PLATFORM: 1 process wcm: EPM: Activate feature client handle 58b5800000001c sess 10000015 authz 1f000015

\*Oct 9 04:16:55.008: %IOSXE-7-PLATFORM: 1 process wcm: EPM: Policy enforcement - client handle 58b5800000001c session 7600000b authz 1f000015

\*Oct 9 04:16:55.008: %IOSXE-7-PLATFORM: 1 process wcm: EPM: Netflow policy enforcement - client handle 58b5800000001c sess 7600000b authz 1f000015 msg\_type 0 policy\_status 0 attr len 0

\*Oct 9 04:16:55.008: %IOSXE-7-PLATFORM: 1 process wcm: PEM recv processing msg Epm spi response(12)

\*Oct 9 04:16:55.008: %IOSXE-7-PLATFORM: 1 process wcm: 0021.6a89.51ca Received activate\_features\_resp for client handle 24969359310979100

\*Oct 9 04:16:55.008: %IOSXE-7-PLATFORM: 1 process wcm: 0021.6a89.51ca Received activate\_features\_resp for EPM session handle 268435477

\*Oct 9 04:16:55.008: %IOSXE-7-PLATFORM: 1 process wcm: PEM recv processing msg Epm spi response(12)

\*Oct 9 04:16:55.008: %IOSXE-7-PLATFORM: 1 process wcm: 0021.6a89.51ca Received

policy\_enforcement\_response for client handle 24969359310979100  
\*Oct 9 04:16:55.008: %IOSXE-7-PLATFORM: 1 process wcm: 0021.6a89.51ca Received  
policy\_enforcement\_response for EPM session handle 1979711499  
\*Oct 9 04:16:55.008: %IOSXE-7-PLATFORM: 1 process wcm: 0021.6a89.51ca Received  
response for \_EPM\_SPI\_ACTIVATE\_FEATURES request sent for client  
\*Oct 9 04:16:55.008: %IOSXE-7-PLATFORM: 1 process wcm: 0021.6a89.51ca Received  
\_EPM\_SPI\_STATUS\_SUCCESS for request sent for client  
\*Oct 9 04:16:55.008: %IOSXE-7-PLATFORM: 1 process wcm: 0021.6a89.51ca Post-auth  
policy ACK recvd from EPM, unset flag on MSCB  
\*Oct 9 04:16:55.008: %IOSXE-7-PLATFORM: 1 process wcm: 0021.6a89.51ca Client in  
AUTHZ\_WAIT state, advance to RUN  
\*Oct 9 04:16:55.008: %IOSXE-7-PLATFORM: 1 process wcm: 0021.6a89.51ca Change  
state to RUN (20) last state AUTHZ\_WAIT (19)  
\*Oct 9 04:16:55.008: %IOSXE-7-PLATFORM: 1 process wcm: 0021.6a89.51ca  
WCDB\_CHANGE: Client 1 m\_vlan 20 Radio iif id 0x6025800000000e bssid iif id  
0x498f8000000001b, bssid c8f9.f983.4260  
\*Oct 9 04:16:55.009: %IOSXE-7-PLATFORM: 1 process wcm: 0021.6a89.51ca WCDB\_AUTH:  
Adding opt82 len 0  
\*Oct 9 04:16:55.009: %IOSXE-7-PLATFORM: 1 process wcm: 0021.6a89.51ca WCDB\_LLM:  
prev Mob state 1 curr Mob State 1 llReq flag 0  
\*Oct 9 04:16:55.009: %IOSXE-7-PLATFORM: 1 process wcm: 0021.6a89.51ca auth state 4  
mob state 1 setWme 0 wme 1 roam\_sent 0  
\*Oct 9 04:16:55.009: %IOSXE-7-PLATFORM: 1 process wcm: 0021.6a89.51ca WCDB\_CHANGE:  
auth=RUN(4) vlan 20 radio 1 client\_id 0x58b58000000001c mobility=Local(1) src\_int  
0x45e78000000000c dst\_int 0x0 ackflag 2 reassoc\_client 0 llm\_notif 0 ip 20.20.20.6  
ip\_learn\_type DHCP  
\*Oct 9 04:16:55.009: %IOSXE-7-PLATFORM: 1 process wcm: 0021.6a89.51ca 20.20.20.6  
RUN (20) Reached PLUMBFASPATH: from line 3862  
\*Oct 9 04:16:55.009: %IOSXE-7-PLATFORM: 1 process wcm: 0021.6a89.51ca 20.20.20.6  
RUN (20) Replacing Fast Path rule^M on AP c8f9.f983.4260 , slot 1 802.1P = 0^M  
\*Oct 9 04:16:55.009: %IOSXE-7-PLATFORM: 1 process wcm: 0021.6a89.51ca 20.20.20.6  
RUN (20) Successfully plumbed mobile rule  
\*Oct 9 04:16:55.009: %IOSXE-7-PLATFORM: 1 process wcm: PEM recv processing msg  
Add SCB(3)  
\*Oct 9 04:16:55.009: %IOSXE-7-PLATFORM: 1 process wcm: 0021.6a89.51ca 20.20.20.6,  
auth\_state 20 mmRole Local !!!  
\*Oct 9 04:16:55.009: %IOSXE-7-PLATFORM: 1 process wcm: 0021.6a89.51ca 20.20.20.6,  
auth\_state 20 mmRole Local, updating wcdb not needed  
\*Oct 9 04:16:55.009: %IOSXE-7-PLATFORM: 1 process wcm: 0021.6a89.51ca Tclas Plumb  
needed: 0  
\*Oct 9 04:16:55.010: AUTH-EVENT: [0021.6a89.51ca, Ca1] Authz complete (SUCCESS)  
for client 0021.6a89.51ca/0x10000016 reported  
\*Oct 9 04:16:55.010: AUTH-EVENT: Raised event AUTHZ\_SUCCESS (10) on handle  
0x10000016  
\*Oct 9 04:16:55.010: AUTH-EVENT: [0021.6a89.51ca, Ca1] Received internal event  
AUTHZ\_SUCCESS (handle 0x10000016)  
\*Oct 9 04:16:55.010: AUTH-EVENT: [0021.6a89.51ca, Ca1] Processing AUTHZ\_CB RESULT  
(success) for 0x10000016  
\*Oct 9 04:16:55.010: AUTH-EVENT: [0021.6a89.51ca, Ca1] Processing SM CB request for  
0x10000016: Event: Authz result processed (215)  
\*Oct 9 04:16:55.010: AUTH-EVENT: [0021.6a89.51ca, Ca1] Authz result processed,  
result: 0  
\*Oct 9 04:16:55.010: WA-SM : Ca1 [20.20.20.6 ] AAA result procd,  
[SUCCESS] [NO FAILURE], info hdl 3D00000B, SM hdl 10000016  
\*Oct 9 04:16:55.010: AUTH-EVENT: [0021.6a89.51ca, Ca1] SM Reauth Plugin:  
Client authz change, result=Success  
\*Oct 9 04:16:55.010: AUTH-EVENT: [0021.6a89.51ca, Ca1] Signalling Authz complete  
(success) for client 0x10000016  
\*Oct 9 04:16:55.010: WA-HTTPD: Ca1 [20.20.20.6 ] 50167/0 AAA result [7],  
info hdl 3D00000B  
\*Oct 9 04:16:55.010: WA-AAA : Ca1 [20.20.20.6 ] 50167/0 AAA reply  
Successful  
\*Oct 9 04:16:55.010: WA-STATE: Ca1 [20.20.20.6 ] State  
AUTHC\_SUCCESS -> HTTP\_FIN\_WAIT



```
*Oct 9 04:16:55.010: WA-TIMER: Ca1      [20.20.20.6      ] FIN-wait timer
start (3 secs)
*Oct 9 04:16:55.011: WA-PAGE : Ca1      [20.20.20.6      ] 50167 Sending Consent
logout page, logout [https://192.168.200.1/logout.html] final [-]
*Oct 9 04:16:55.011: WA-IO   : Ca1      [20.20.20.6      ] 50167/0 IO state
AUTHENTICATING -> WRITING
*Oct 9 04:16:55.011: WA-IO   : Ca1      [20.20.20.6      ] 50167/0 Write event,
buffer addr 0x97577F9C, length 1567, cursor 0
*Oct 9 04:16:55.011: WA-IO   : Ca1      [20.20.20.6      ] 50167/0 IO state
WRITING -> END
*Oct 9 04:16:55.011: WA-HTTPD: Ca1      [20.20.20.6      ] 50167/0 Remove IO
ctx and close socket,
id [3B00002E]
*Oct 9 04:16:55.011: WA-HTTPD: Ca1      [20.20.20.6      ] 50167/0 Remove IO
ctx - Closed SSL connection
*Oct 9 04:16:55.011: WA-CLNT : Ca1      [20.20.20.6      ] 50167 Client conn
timer start [0021.6a89.51ca] ioctx [3B00002E]
*Oct 9 04:16:55.017: WA-QLFY : Ca1      [20.20.20.6      ] Ingress qlfy,
Session found, ACL in-place, mac [0021.6a89.51ca], intercept
*Oct 9 04:16:55.017: WA-QLFY : Ca1      [20.20.20.6      ] Ingress qlfy,
Session found, ACL in-place, mac [0021.6a89.51ca], intercept
*Oct 9 04:16:55.017: WA-INFT : Ca1      [20.20.20.6      ] 50167 TCP FIN,
dport 443
*Oct 9 04:16:58.010: WA-TIMER: Ca1      [20.20.20.6      ] FIN-wait timer timeout
*Oct 9 04:16:58.010: WA-STATE: Ca1      [20.20.20.6      ] State
HTTP_FIN_WAIT -> AUTHZ
*Oct 9 04:16:58.010: WA-ACL  : Ca1      [20.20.20.6      ] Remove IPv4
intecept ACL via FFM, name
"IP-Adm-V4-Int-ACL-global", pri 50, IIF 58B5800000001C
*Oct 9 04:16:58.011: WA-ACL  : Ca1      [20.20.20.6      ] Remove IPv6
intecept ACL via FFM, name
"IP-Adm-V6-Int-ACL-global", pri 52, IIF 58B5800000001C
*Oct 9 04:16:58.011: WA-ACL  : Ca1      [20.20.20.6      ] Add IPv4 logout
ACL via FFM, name
"IP-Adm-V4-LOGOUT-ACL-1027", pri 51, IIF 58B5800000001C
*Oct 9 04:17:01.354: WA-CLNT :          [20.20.20.6      ] 50164 Client conn
timer exp [0021.6a89.51ca] ioctx [6B00002B]
*Oct 9 04:17:01.354: WA-CLNT :          [20.20.20.6      ] 50164 Client conn
del [0021.6a89.51ca] ioctx [6B00002B] #3
*Oct 9 04:17:03.623: WA-CLNT : [20.20.20.6      ] 50165 Client conn timer exp
[0021.6a89.51ca] ioctx [AB00002C]
*Oct 9 04:17:03.623: WA-CLNT [20.20.20.6      ] 50165 Client conn del
[0021.6a89.51ca] ioctx [AB00002C] #2
*Oct 9 04:17:04.971: WA-CLNT :          [20.20.20.6      ] 50166 Client conn
timer exp [0021.6a89.51ca] ioctx [E300002D]
*Oct 9 04:17:04.971: WA-CLNT :          [20.20.20.6      ] 50166 Client conn
del [0021.6a89.51ca] ioctx [E300002D] #1
*Oct 9 04:17:05.012: WA-CLNT :          [20.20.20.6      ]
[0021.6a89.51ca] ioctx [3B00002E]
*Oct 9 04:17:05.012: WA-CLNT :          [20.20.20.6      ] 50167 Client conn
del [0021.6a89.51ca] ioctx [3B00002E] #0
```