

é€šé ŽCAPFç·šä,ŠCAé... ç½®è†ªâ«è%œ»è `` »â

ç>®éœ,,

ç°;ä»<

â¿...è! æç ä»¶

éœœ±,

æŽ;ç””â...fä»¶

èfœæ™-è³†è”Š

é©—è%ä¼°æœ æ™” æ™”,é-“â’œæ—¥æœÿ

æ>æ-°ä¼°æœ æ™” ” é»è...! â ç” ±

è”â@š

ADæœ æ™” ä€ ä½;ç”” èœ...â’œè%œ»,æ” ;æ ç

IISè°«â½é©—è%â’œSSLç!«ç é... ç½®

CUCMé... ç½®

é©—è%

é©—è%IISè%œ»

é©—è%CUCMé... ç½®

ç> é—œé€fç

ç°;ä»<

æœ-æ”æ¿â»ç¹éé ŽCisco Unified Communications Manager(CUCM)çš,,Certificate Authority Proxy Function(CAPF)OnlinešŸèf½é€²è;œçš,,è†ªâ«æ†’è%è `` »âšâ’œç°œè” ,ä€,

ä½œèœ...i¼šMichael Mendozai¼œæ çšTACâ·¥ç” <â,«ä€,

â¿...è! æç ä»¶

éœœ±,

æœ çš’â»è°æ,, çžèš£ä»¥ä,«ä,»é;œi¼š

- æœ çš’æ·â ^é€šè” Šç®;ç ç†â”;
- X.509æ†’è%
- Windowsä¼°æœ æ™” ”
- Windows Active Directory(AD)
- Windows Internetè³†è”Šæœ æ™”(IIS)
- NTi¼^æ-°æš€è;“i¼%LANç®;ç ç†â”;(NTLM)é©—è%

æŽ;ç””â...fä»¶

æœ-æ-†ä,çš,,è³†è”Šä¿,æ¹æ“šä»¥ä,«è»Ÿé«”â’œç;—é«”ç%œ^æœ-i¼š

- CUCMç%œ^æœ-12.5.1.10000-22
- Windows Server 2012 R2
- IPé»è©±CP-8865/éŸœé«”i¼šSIP 12-1-1SR1-4â’œ12-5-1SR2ä€,

æœ-æ-†ä,çš,,è³†èˆŠæ~æ 1æ“šç%¹â®šâˆlé©—â®œçˆ’âçfâ...šçš,,èç ½®æ%œâ»°ç««ã€œ,æ-†ä,ä½¿ç”” âˆ°çš,,æ

# èfœæ™-è³†èˆŠ

æœ-æ-†èªªæ~Žè²âšÿèf½çš,,èˆâ®šâˆœç,é—œè³†æ° ¼»¥ä¾¼â...¶ä»-ç ”ç©¶ä¹¿ç”” ã€œ,

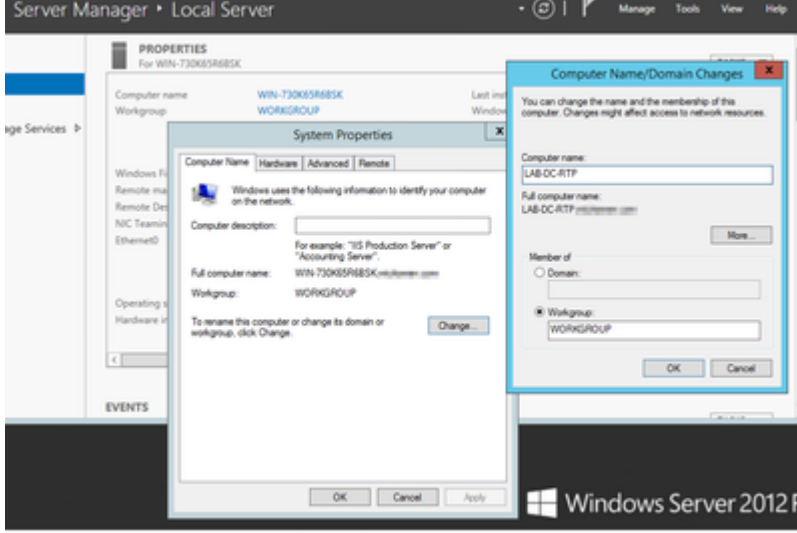
## é©—è%â¼°æœ ¼â™” æ™,é-”âœæ—¥æœÿ

çç°ä¿ ¼Windowsä¼°æœ ¼â™” é... ¼ç½®â°tæ£çç°çš,,æ—¥æœÿã€œ ¼æ™,é-”âœæ™,â ¼èi¼œâ ç,°â®fâ

### æ’æ-°¼°æœ ¼â™” é»»è...|â ¼ ¼ç”” ±

é ¼è” æf...æ³ ¼ä,¼œä¼°æœ ¼â™” çš,,é»»è...|â ¼ ¼â...æœ%œš” æ©ÿâ ¼ ¼ç”” ±i¼œä¾¼â! ,WIN-730K65R6BSKã€œ,â•ÿç”” ADâÿÿæœ ¼â™”â¹â%œ ¼éœ€è| ¼â ¼šçš,,ç-à,€â»¶ä»œ~i¼œçç°ä¿ ¼æ””â®

- âŽèˆâˆ°Local Serveri¼œé ¼,æ”†Computer nameä»¥é-â•ÿSystem Properties
- é ¼,æ”†Changeæœ%œˆ•ä,¼é ¼µâ...¥æ-°çš,,é»»è...|â ¼ ¼ç”” ±i¼š



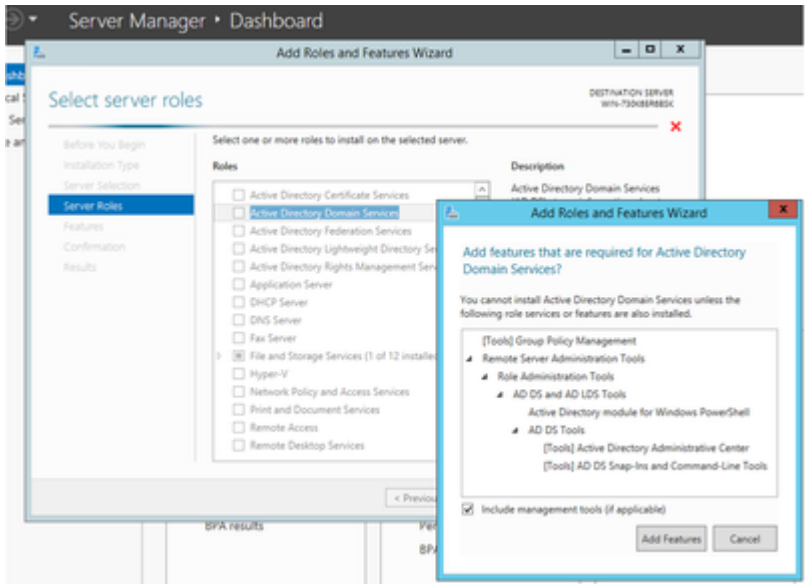
- é† ¼æ-°â•ÿâ¼°æœ ¼â™” ä»¥æ†%œç”” æ’æ”¹

# èˆâ®š

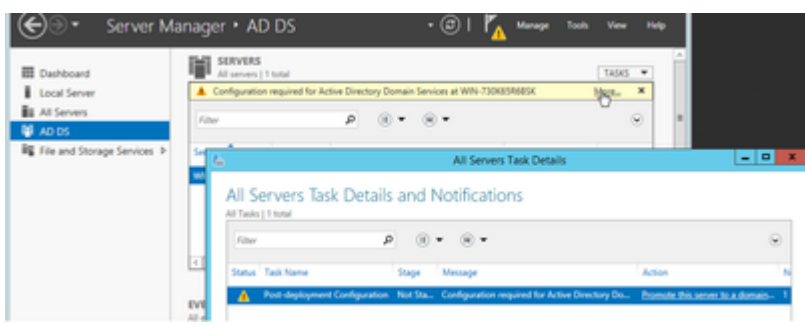
## ADæœ ¼â™”ã€œ ¼ä½¿ç”” è€œ...âœœ%œ,æ”jæ ¼¿

### â•ÿç””âœœ... ¼ç½®Active Directoryæœ ¼â™”

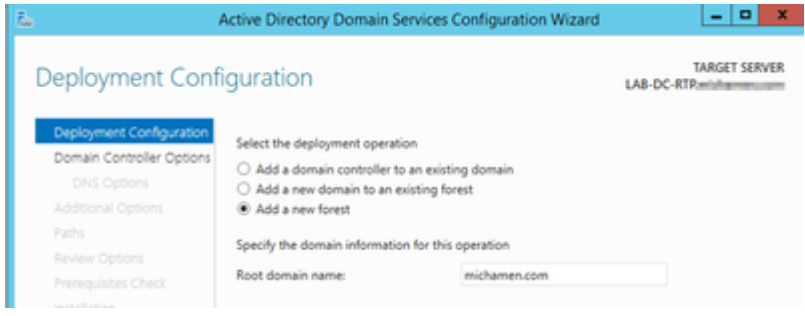
- âœ”â¼°æœ ¼â™” ç®jç ¼tâ™” ä,é ¼,æ”†æ-°âçžèš’è%²âœæšÿèf½é ¼,é ...i¼œé ¼,æ”†âÿæ-¼èš’è%²âœ Directoryäÿÿæœ ¼â™”i¼š

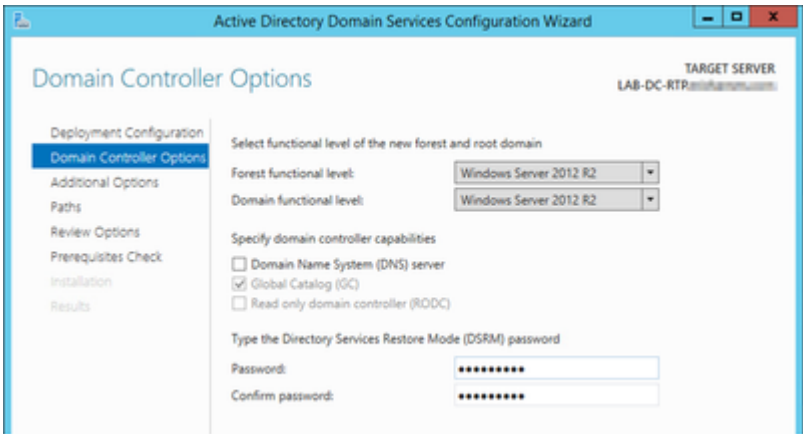


- Next
  - Close
  - Server Manager > AD DS
- Configuration required for Active Directory Domain Services
- Active Directory
- more

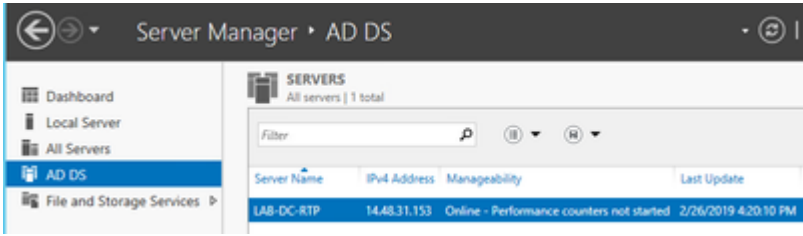


- ...



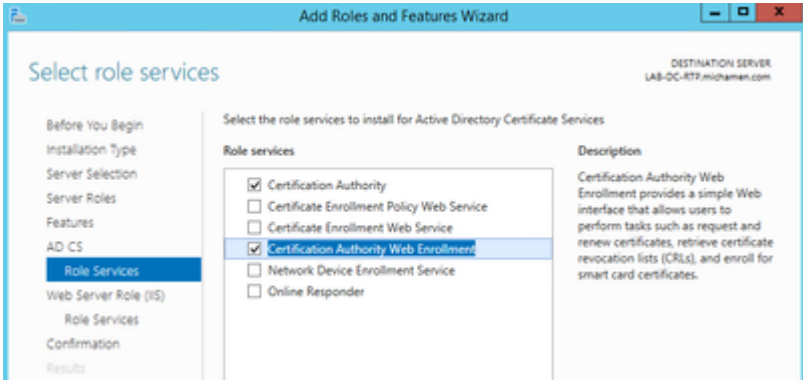


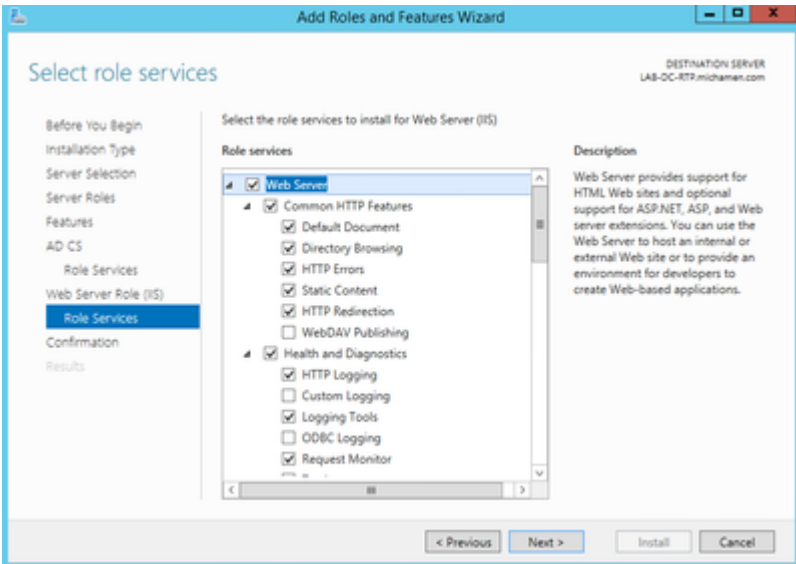
- éœ-€è♠æCE†â@šNetBIOSâÿÿâ♠♠(æœ-â¹|é©—ä, ä½ç””ä°†MICHAMEN1)ã€,
- æCE%œç...§âš@â°žâ@CEæ^æ”æ”ä½œæï€ç,,¶â¾CEâ¼°æœæ”â™”é†æ-°â•ÿâ•ä»¥â®CEæ^æ”â®%œé
- ä,æ¬ç™»â...¥æ™,éœ-€è♠æCE†â@šæ-°âÿÿâ♠♠ã€æ, ä¾â|,MICHAMEN1\Administratorã€,



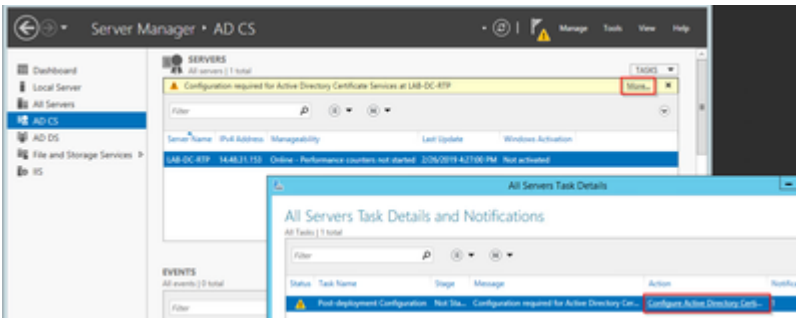
â•ÿç””â’CEé...ç½@è%œæœæ”â™”

- âœ”â€CEâ¼°æœæ”â™”ç®çç†â™”ã€ä½çéæ”†æCEæ-°âçžèš’è%œâ’CEâšÿèf½ã€
- éæ”†Active Directoryè%œæœæ”â™”¼CEç,,¶â¾CEæCE%œç...§æççœœ-°âçžæ%œéœ€âšÿèf½¼^æ%œœœœ%
- âœœ-¼èš’è%œæœæ”â™”¼CEè«æªçæÿ¥è%œæœ,é’ç™¼æ©ÿæšçWebè”»â†š

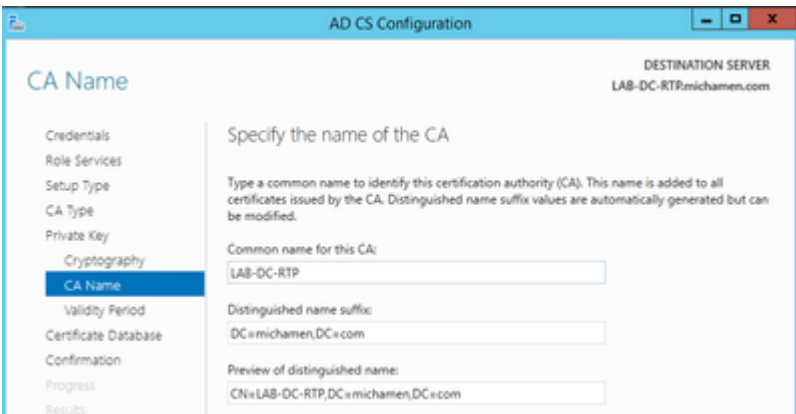




- In Server Manager > AD DS, click the 'More Features' link in the ribbon to install Active Directory Certificate Services.



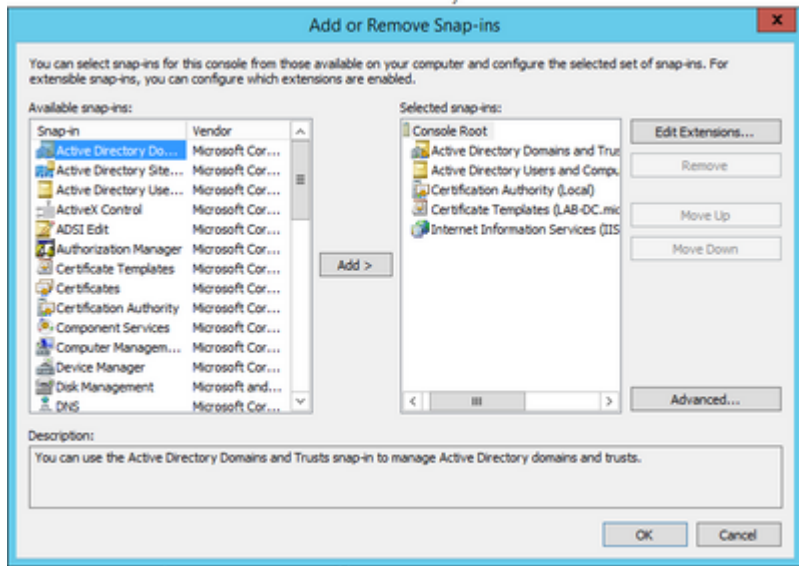
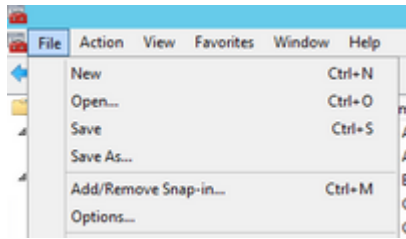
- In the 'AD CS' role, click 'More Features' to install Active Directory Certificate Services.
- In the 'More Features' dialog, click 'Add Features' to install Active Directory Certificate Services.
- In the 'Configure Active Directory Certificate Services' wizard, click 'Next' to proceed to the 'CA Name' step.
- In the 'CA Name' step, specify the name of the CA (e.g., LAB-DC-RTP) and click 'Next'.
- In the 'Distinguished name suffix' step, specify the suffix (e.g., DC=michamen,DC=com) and click 'Next'.
- In the 'Preview of distinguished name' step, review the information and click 'Next'.
- In the 'Confirmation' step, review the information and click 'Install'.



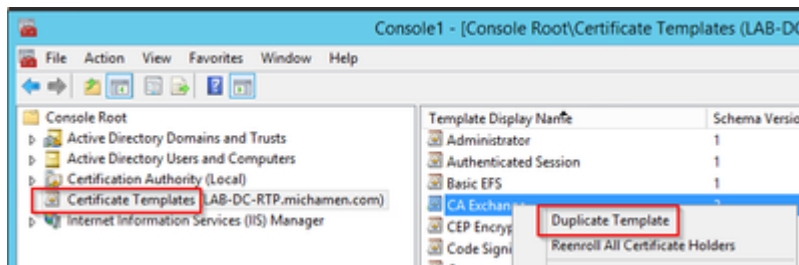
- In the 'CA Name' step, specify the name of the CA (e.g., LAB-DC-RTP) and click 'Next'.
- In the 'Distinguished name suffix' step, specify the suffix (e.g., DC=michamen,DC=com) and click 'Next'.

ç,°CiscoRAâ»°ç««è%æ»æ;æ◆¿

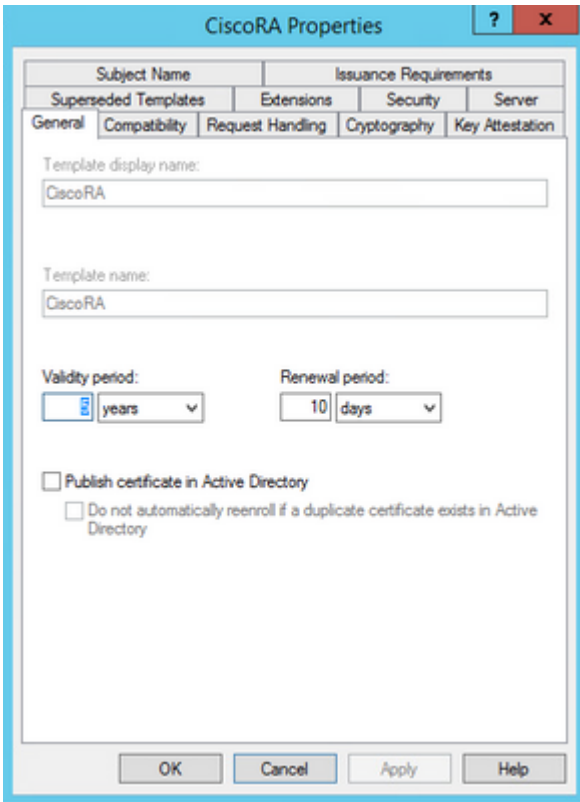
- é-â•ÿMMCã€„,◆æ“#Windowsé-âš<â¼½æ”™i¼CEç,,¶â¼CEâœ”ã€É◆èjCEã€◆ä,é◆µâ...¥mmc
- é-â•ÿMMCè!-çª—ä,|æ-°âçžâ»¥ä,ç@jç◆†â-®â...fi¼^ç””æ-¼é...◆ç½@çš,ä,◆â◆CEé»ž¼%oi¼CEç,,¶



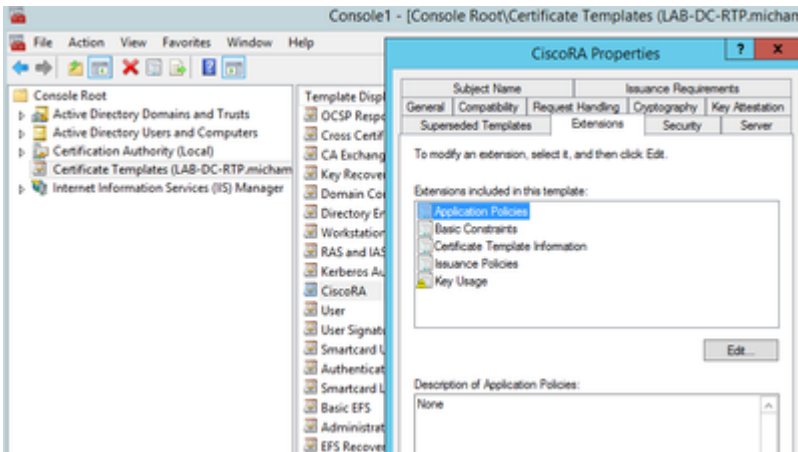
- é◆æ“#File > Savei¼CEä,|â°†æçæžšâ¶æª-æœfè©±â,,²â°æj^é ä»¥â<é€ÿé†◆æ-°è”ªâ◆
- â¼žç@jç◆†â-®â...fä,i¼CEé◆æ“#Certificate Templates
- â°ç««æ^â...<és†æ;æ◆ç(æœ€â¼æ~ã€CEæ¹è%œ>,é'ç™i¼œ©ÿæš<ã€◆æ”jæ◆ç¼CEä,|â°ªâ...¶â¼



- äj®æ”¹æ;æ◆çã€„æCE%â,€ä,â◆³é◆µè©²â±-æ€Sä,|é◆æ“#â±-æ€S
- é◆æ“#Generalé◆ç±ç¼CEâ°ªæœ%æ•æœÿè”â®šç,°20â¹i¼â,|æžœéœ€è|◆i¼CEä¹ÿâ◆-ä»¥è

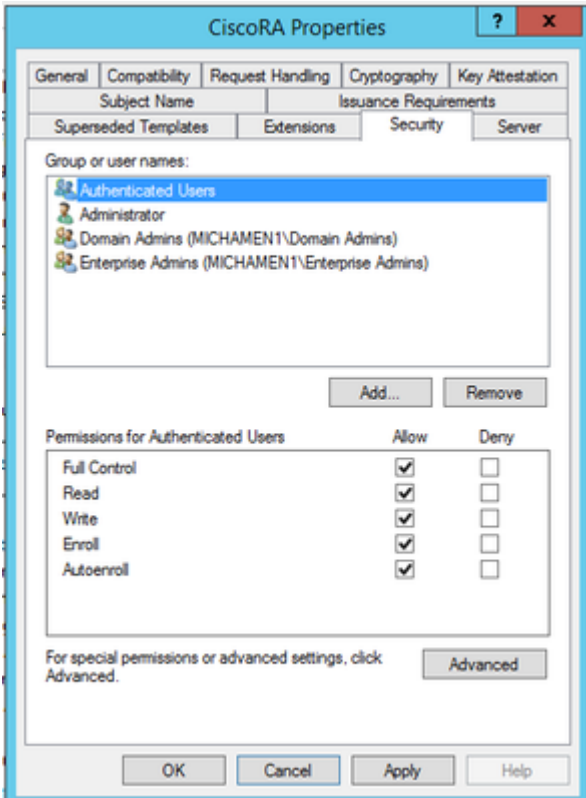


- é,æ“†Extensionsé ç±ñ¼Ççª ã†°é; çº Application Policies¼Çç,,¼¼Çé,æ“†Edit



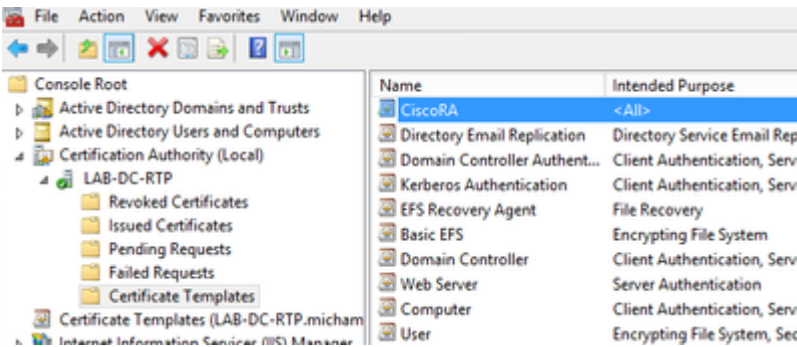
- ãªé™ãœ¨ã†°ç ÷¼çš,,è | -çª—ã,é; çº çš,,æ%œæœ%ç-ç•¥
- é,æ“†ã€Subject Nameã€é,é ...ã ÷¼Çç,,¼¼Çé,æ“†ã€Supply in Requestã€ã-@é,æœ%é^•
- é,æ“†Securityé ç±ñä,|æž^ã°é; çº çš,,æ%œæœ%çµ,,/ã¼çš”” è€...ã çš” ±çš,,æ%œæœ%è”





ä½çè%æ>æ;æ◆çâ◆-ä¾>é'ç™¼

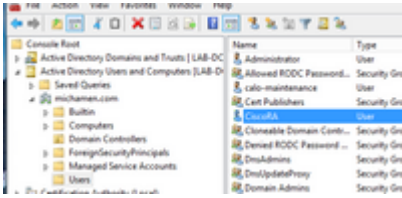
- ä°MMÇç@ç◆ç†â-@â...fä,é◆æ"†è%æ>æ'ç™¼æ©ÿæ\$ç¼Çç,,¶â¾Çæ±•é-è³†æ-™â¾¾æ'¹ä»¥æ%¾¼ä
- ä°âÇ...â◆«ã€Çæ◆◆ç"±ã€◆ã'Çæ€Çç>@æ"™ç""é€"ã€◆çš,,æ;†æž¶ä,çš,,ç©ç™¼è™•æÇ%¾ä,€ä
- é◆æ"†Newâ'ÇCertificate Template to Issue
- é◆æ"†æ-°â»ç««â'Çç"è¼çš,,CiscoRAæ"jæ◆ç



Active Directory CiscoRAâ,³æ¶â»ç««

- ä°žè^â°MMÇç@ç◆ç†â-@â...f¼Çç,,¶â¾Çæ◆æ"†Active Directoryä½çç""è€...â'Çé»è...!
- ä°æœ€â-çª—æ ¼ä,çš,,æ"¹ä,é◆æ"†Usersè³†æ-™â¾¾æ
- ä°âÇ...â◆«ã€Çæ◆◆ç"±ã€◆ã€◆ã€Çæâž<â'¥ã€◆ã'Çæ€Çæèªªæ~žã€◆çš,,æ;†æž¶ä,çš,,ç©ç™¼è™
- é◆æ"†Newâ'ÇUser
- ä½çç""ä½çç""è€...â◆◆ç"±/â-†çç¼(ciscora/Cisco123ç""æ-¼æœ-â-é©—)â»ç««CiscoRAâ,³æ¶â»ç¼Çæ,¼æœ never expiresè¹â◆æ-¹âjš

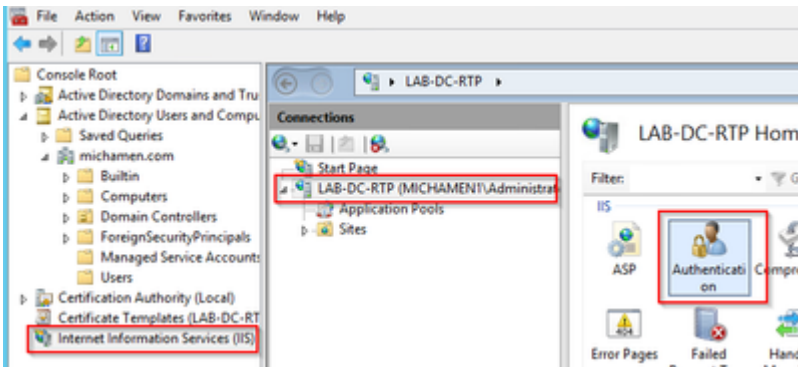




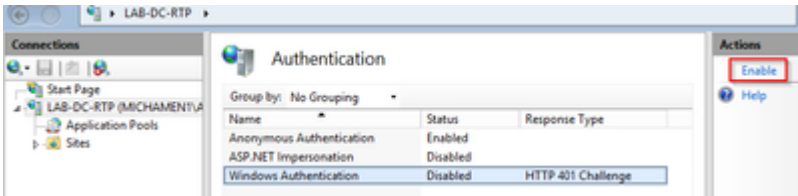
IIS è «ä»½é©—è%â'ÆSSLç¹«çϕé...ϕç½®

â•ÿç'™ NTLM é©—è%

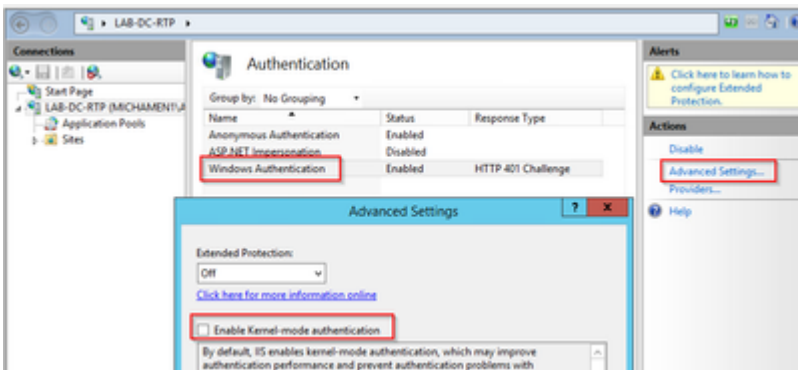
- ä°Žè^â°MMCç®jçϕϕ†â-®â...fi¼Æç,,¶â¾Æâœ™ Internetè³†è Šæœϕâ<™(IIS)ç®jçϕϕ†â™™ ç®jçϕϕ†â
- âŠÿèf½æ,...â-®éjçϕ°âœ™ä,ä,€â¹€ä,ã€,æÇ%ââ...©ä,AuthenticationâŠÿèf½âœçϕ°



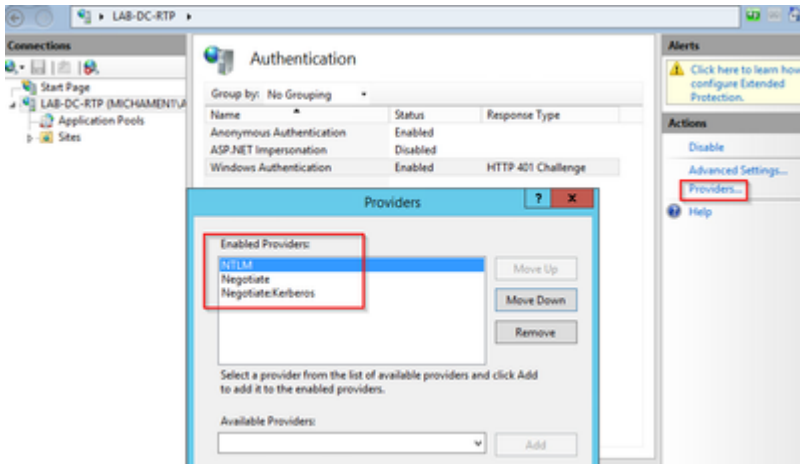
- éϕ,ä,Windows Authenticationi¼Æç,,¶â¾Æâœ™â€œæ“ä½œã€ϕæjæž¶i¼â°³çª—æ ¼i¼%â,éϕ,æ“†Enableéϕ,é



- æ“ä½œçª—æ ¼éjçϕ°Advanced Settingséϕ,é ...i¼éϕ,æ“†è©²éϕ,é ...ä,â°-æ¶^éϕ,ä,Enable Kernel-mode authentication



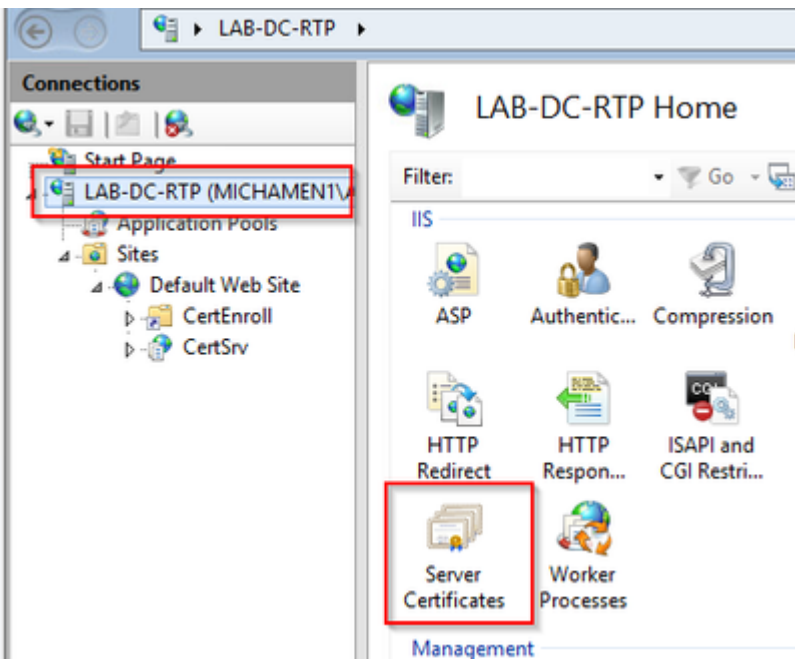
- éϕ,æ“†Providersä,æŽ'â°NTMLi¼Æç,,¶â¾Æâœ™â°†ã€,



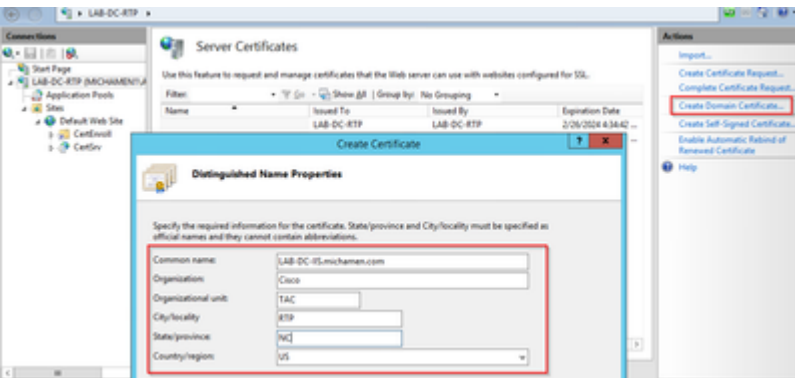
ç"ÿæ^ Webä¼æœä™ " çš,,è«ä»½è%œ»,

äl,æžœå°šæœä¼°ç°¼é€™ç"®æf...æ³°ä¼¼œæ,,éœ€è|ç°,°Webæœä™ç"ÿæ^ è%œ»ä'œè«ä»½è%œ»

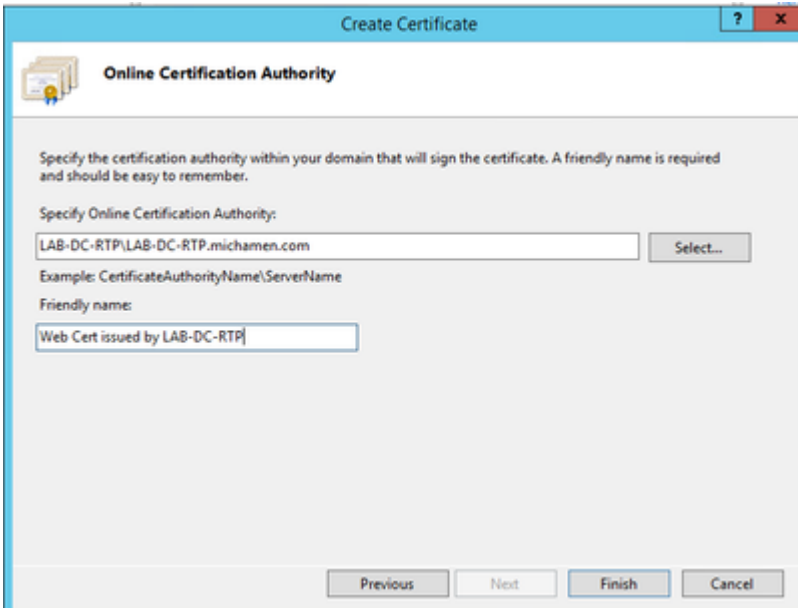
- ä¼¼IISç®¼ç°¼ä-®ä...féçæ"†Webä¼æœä™"i¼œç,,¶ä¼¼œæ%å...©ä, <Server Certificates(ä¼¼æœä™ è%œ»)äšÿèf½æœ-ç°¼¼š



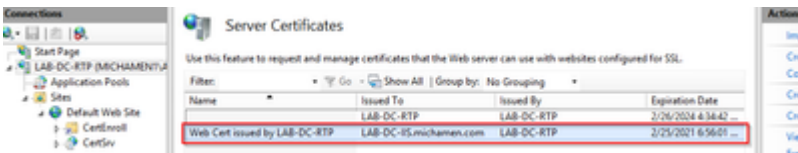
- é è"æf...æ³°ä¼¼œæ,, ä-ä»¥çœæä°æœè™•ä^ —ä¼°çš,,ä,œ€æèè%œ»¼ä¼°³è†°ç°¼¼äçš,,æ



- é,æ"†æ, " çš,,æ 1CAçš,,è%æ,ä½œç,°é 'ç™¼è€...i¼œç,,¶¼œé,æ"†å@œæ^:

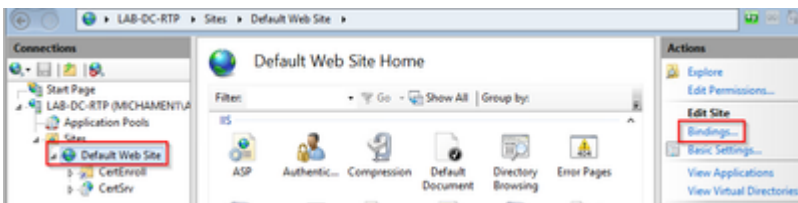


- æ,,å-ä»¥åœ™,æªçè|-å^—åªçš,,CAè%æ,ä'œWebä¼°æœæ™ çš,,è°«ä½è%æ,i¼š

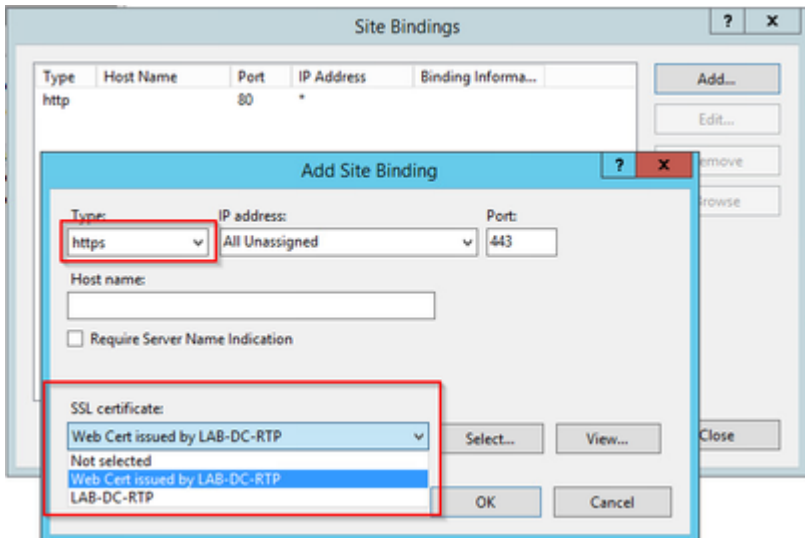


**Webä¼°æœæ™ SSLç¹«çµ**

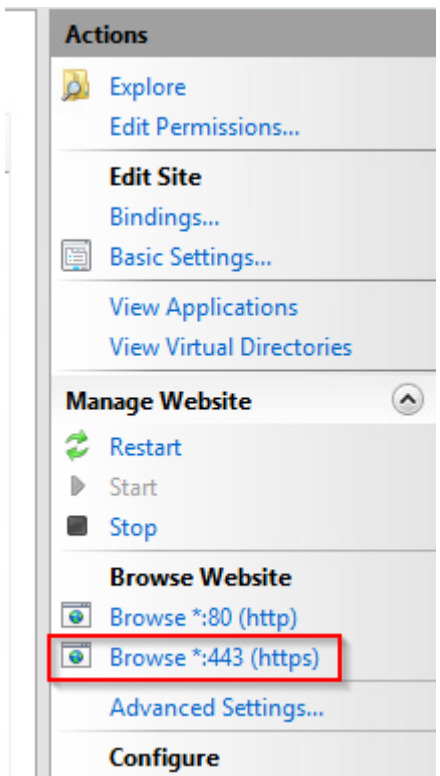
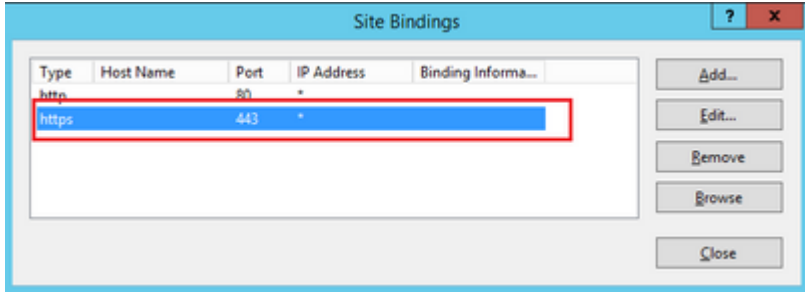
- åœ"æ"æªçè|-ä,é,æ"†ä,œæçç™é»ž¼æ,,å-ä»¥ä½çš" é è ç¶²çœ™æ^-ä½ä...¶æ'ç'åœ-å°ç



- æ-°ç¹«çš,,é è è å@šè«è" å@šç,°äÿ 80ä,šçš,,HTTPæ€,åœ" Typeä,æ%œ,å-@ä,é,æ"†https Certificateä,æ%œ,å-@ä,é,æ"†åœ" ä,šä,çç-œ,ä°çççš,,èªç°½å è%æ,i¼œç,,¶¼œé,æ



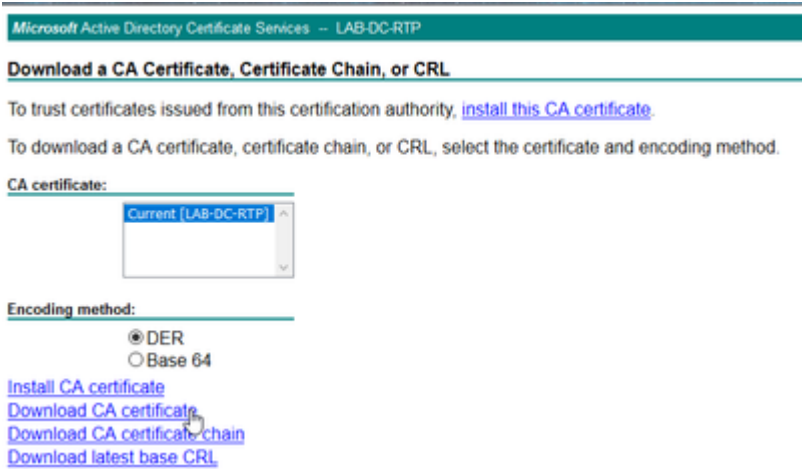
- `https://*:*:443(https)` ...



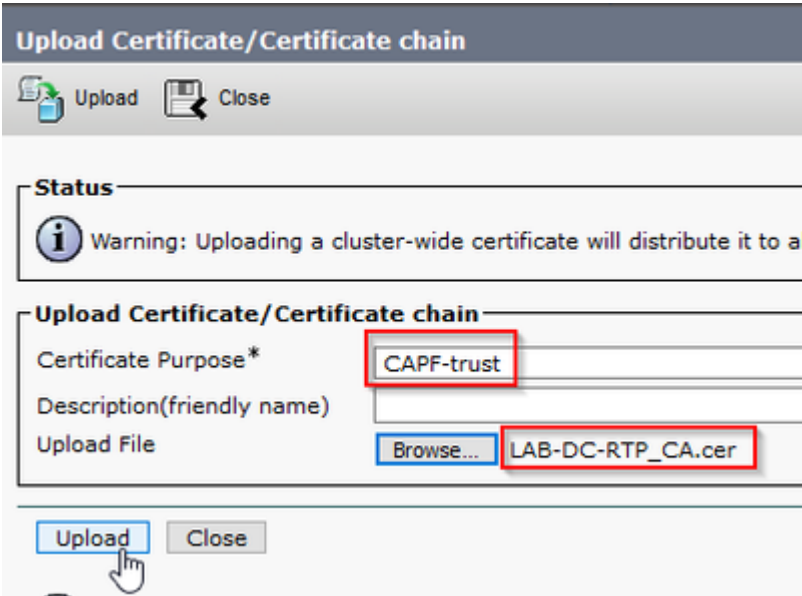
- `http://*:*:443(https)` ...

CUCMé... `https://*:*:443(https)`

- **AD CS** ([https://YOUR\\_SERVER\\_FQDN/certsrv/](https://YOUR_SERVER_FQDN/certsrv/))



- **OS Administration** **Security > Certificate Management** **Upload Certificate/Certificate chain** **CAPF-trust**



...**CallManager-trust**

- **System > Service Parameters** **Unified CM Publisher** **Cisco Certificate Authority Proxy**
- **Certificate Issuer to Endpoint** **Online CA** **Parameters** **Web FQDN** **CA**

## Service Parameter Configuration

Save Set to Default

### Select Server and Service

Server\*

Service\*

All parameters apply only to the current server except parameters that are in the cluster-wide group(s).

### Cisco Certificate Authority Proxy Function (Active) Parameters on server cucm125pub--CUCM Voice/Video (Active)

Parameter Name	Parameter Value
<a href="#">Certificate Issuer to Endpoint</a> *	Online CA
<a href="#">Duration Of Certificate Validity (in days)</a> *	1825
<a href="#">Key Size</a> *	1024
<a href="#">Maximum Allowable Time For Key Generation</a> *	30
<a href="#">Maximum Allowable Attempts for Key Generation</a> *	3

### Online CA Parameters

<a href="#">Online CA Hostname</a>	lab-dc-iis.michamen.com
<a href="#">Online CA Port</a>	443
<a href="#">Online CA Template</a>	CiscoRA
<a href="#">Online CA Type</a> *	Microsoft CA
<a href="#">Online CA Username</a>	*****
<a href="#">Online CA Password</a>	*****

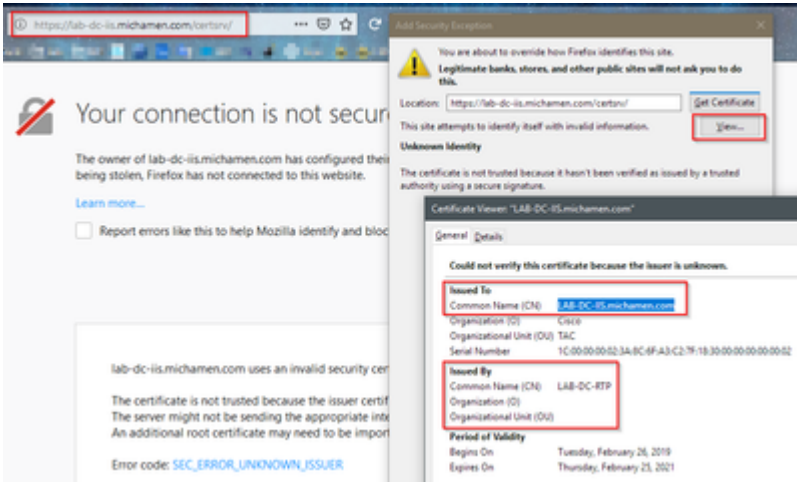
- Cisco Unified Serviceability > Tools > Service Activation  
 Certificate Enrollment Service

Service Name	Activation Status
<input checked="" type="checkbox"/> Cisco Certificate Authority Proxy Function	Activated
<input checked="" type="checkbox"/> Cisco Certificate Enrollment Service	Deactivated
<input checked="" type="checkbox"/> Cisco CTL Provider	Activated

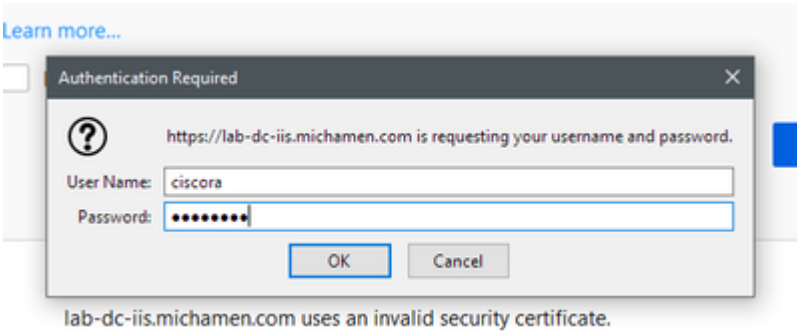
é©—è%o

é©—è%oIISè%oæ> ,

- https://YOUR\_SERVER\_FQDN/certsrv/
- éj\_çæè%oæ> ,ä, ä—äç;ä»è! ä ±ã€ ,æ-°äçzä¼<ãæ-ä, | æªçæÿ¥è%oæ> ,ã€ ,çç°äç ä®fè^#é æœÿç

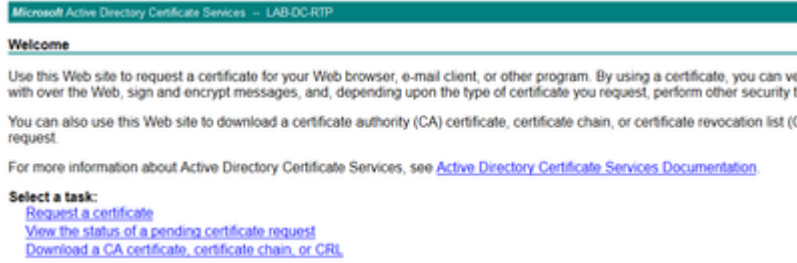


- æŽŹã—ã¼ã¼—ã¼CE¼CEæ, ``éœ€è | é€²è;CE©—è%õ¼æææ™, æ, ``éœ€è | ä½ç"" ä¼ã%ç, °



lab-dc-iis.michamen.com uses an invalid security certificate.

- ç||“éŽè«ä»½é©—è%ã¼CE¼CEæ, `` ä¼...é `èf½ã¼ æªçè! -AD CS¼^Active Directoryè%ãæ, æœäã™¼%ãæ;è;Žé éç¼ç¼



é©—è%CUcMé... ç½®

ãÿ·è;CE€Sã, èãÿ·è;CEçš, æŸ€©ÿ¼CEä»Ÿã¼çæ `` ä...||ä,ã,ãæ°é»è©±ä,Šã®%è£ LSCè%ãæ,ã€,

æŸ€©ÿ1.é—ã·ÿCallManager Administration éçç¼CEä¼æ-çé—ã·ÿDeviceáCEPhone

æŸ€©ÿ2.éç, æ"#FindæCE%óé^ä»Ÿé;çæ°é»è©±

æŸ€©ÿ3.éç, æ"#è | äã®%è£ LSCçš, é»è©±

æŸ€©ÿ4.ãä, çæ»ã¼ã·èŸæ†è%ãæŽ æ—Šã-®ä½ä»£çç†ãŠÿèf½(CAPF)è³èè Š

æŸ€©ÿ5.ã¼ãä€CECertificate

Operation¼è%ãæ, æ""ä½œi¼%ãœä, éç, æ"#ã€CEInstall/Upgradei¼ã®%è£ /ãççš¼%ãœäã€,



æYé©Ÿ6.é,æ"†Authentication Modeã€i¼^é€šéŽNullå—ä,²å—ä»¥é€²èjEæ,–è©!i¼%

æYé©Ÿ7.æ»¾å<•ã°é ééççš,,é ,éf"i¼Eç,,¶å¾¾Eç,°é»è©±é,æ"†savei¼Eç,,¶å¾¾Eé,æ"†Apply Configã€,

æYé©Ÿ8.é»è©±é† æ–°ã•Yã<•ä,|è"»ã†šã>žã¾Ei¼Eä½ç" LSCç<€æ...éŽæ¿¾ã™" çç°èª LSCã®%èèF

- å¾¾žADä¼°æœ æ™" ä é–ã•YMMCi¼Eã±•é–è%ææ,é 'ç™¼æ©Yæš<ç®;ç†ã–®ã...fä»¥é,æ"†ã
- é»è©±æç ç>®éj çç°ãœ" æ"è| æªçè|–ã...ši¼Eä»¥ã,æ"èj çç°çš,,ä,€ã°è©³ç°è³è" š¼š
  - è«æ±,IDI¼šã"–ä,€ã°ã^–è™Y
  - è«æ±,è€...ã ç" ±i¼šãž...é ^éj çç°ã²é... ç½®çš,,CiscoRAã,³æ^¶çš,,ä½ç" è€...ã ç" ±
  - è%ææ,æ"jæ ç¼¼šãž...é ^éj çç°æ%œã»°ç«çš,,CiscoRAæ"jæ ççš,,ã ç" ±
  - å.²ç™¼ã†°ã...–ç"ã ç" ±i¼šãž...é ^éj çç°é™,,ãšãœ"èF ç½®ã ç" ±ä,çš,,é»è©±ãž<è™Y
  - è%ææ,ç"Yæ•æ–¥æœYã'CEè%æ>,ã°æœYæ–¥æœY

Request ID	Requester Name	Binary Certificate	Certificate Template	Issued Common Name
2	MICHAMEN1\Administrator	-----BEGIN CERTI...	Web Server (WebSer...	LAB-DC-IIS.michamen...
3	MICHAMEN1\LAB-DC-RTPS	-----BEGIN CERTI...	Domain Controller (...)	LAB-DC-RTP.michame...
4	MICHAMEN1\ciscora	-----BEGIN CERTI...	CiscoRA (1.3.6.1.4.1.3...	CP-8865-SEP74A02FC0...

ç> é—œé€£ç?

- [CAPFçšã,ŠCAæ...éšœæŽ'é™æ](#)
- [æš€èj:“æ”æ è^†æ–ã»¶ - Cisco Systems](#)

## 關於此翻譯

思科已使用電腦和人工技術翻譯本文件，讓全世界的使用者能夠以自己的語言理解支援內容。請注意，即使是最佳機器翻譯，也不如專業譯者翻譯的內容準確。Cisco Systems, Inc. 對這些翻譯的準確度概不負責，並建議一律查看原始英文文件（提供連結）。