

在無線接入點上配置SSID到VLAN對映

目標

虛擬區域網(VLAN)是一種交換網路，它按功能、區域或應用進行邏輯分段，而不考慮使用者的物理位置。VLAN是一組主機或埠，它們可以位於網路中的任何位置，但進行通訊的方式就像它們位於同一個物理網段上一樣。VLAN允許您在不更改任何物理連線的情況下將裝置移動到新的VLAN，從而有助於簡化網路管理。

中繼埠和交換機埠之間的標籤的VLAN包含乙太網幀中的VLAN資訊。未標籤的VLAN傳送不帶VLAN標籤的流量。VLAN標籤將資訊插入到乙太網幀中，以標識哪一幀屬於哪個VLAN。主干連線埠是處理多個VLAN的連線埠。

服務集識別符號(SSID)是無線客戶端可以連線到無線網路中所有裝置或在其中共用的唯一識別符號。區分大小寫，並且不得超過32個字母數字字元。

SSID Broadcast功能允許在網路上廣播SSID。預設情況下，此功能已啟用，以使無線裝置可以發現網路。

本文提供如何在無線接入點上配置SSID到VLAN對映的說明。

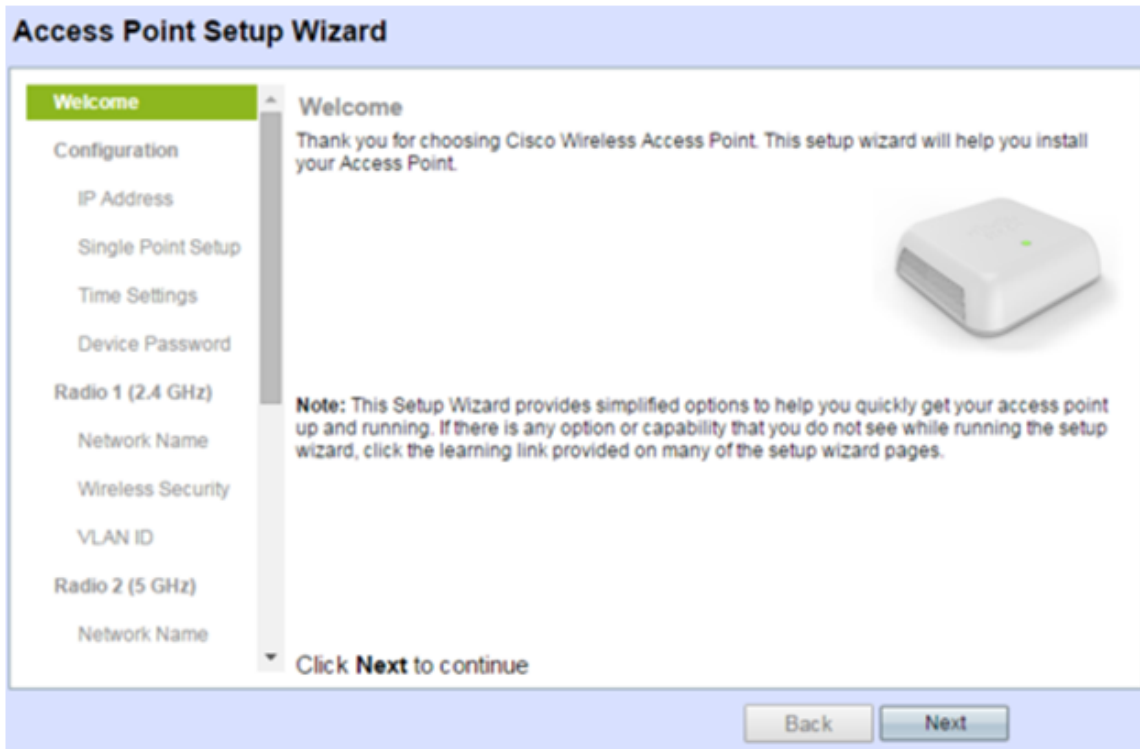
適用裝置 | 韌體版本

- WAP121 | 1.0.6.5(下載[最新版](#))
- WAP131 | 1.0.2.8(下載[最新版](#))
- WAP150 | 1.0.1.7(下載[最新版](#))
- WAP321 | 1.0.6.5(下載[最新版](#))
- WAP351 | 1.0.2.8(下載[最新版](#))
- WAP361 | 1.0.1.7(下載[最新版](#))
- WAP371 | 1.3.0.3(下載[最新版](#))
- WAP551 | 1.2.1.3(下載[最新版](#))
- WAP561 | 1.2.1.3(下載[最新版](#))
- WAP571 | 1.0.0.17(下載[最新版本](#))
- WAP571E | 1.0.0.17(下載[最新版本](#))

配置SSID到VLAN的對映

使用安裝嚮導

步驟1.從接入點基於Web的實用程式的主控制面板運行安裝嚮導。



步驟2.提供安裝嚮導所需的配置詳細資訊。

步驟3.在 *Network Name(SSID)* 欄位中，在2.4 GHz網路的Configure Radio 1螢幕下，輸入您的首選SSID。預設值為ciscosb_2.4GHz。按「**Next**」（下一步）。

Configure Radio 1 - Name Your Wireless Network

The name of your wireless network, known as an SSID, identifies your network so that wireless devices can find it.

Enter a name for your wireless network:

Network Name (SSID):
For example: MyNetwork

[? Learn more about network names](#)

Click **Next** to continue

Back

Next

步驟4.選擇無線網路的安全型別。

附註：在本例中，選擇了最佳安全（WPA2個人 — AES）。

Configure Radio 1 - Secure Your Wireless Network

Select your network security strength.

Best Security (WPA2 Personal - AES)

Recommended for new wireless computers and devices that support this option.
Older wireless devices might not support this option.

Better Security (WPA/WPA2 Personal - TKIP/AES)

Recommended for older wireless computers and devices that might not support WPA2.

No Security (Not recommended)

Enter a security key with 8-63 characters.

.....|



Below Minimum

Show Key as Clear Text

[? Learn more about your network security options](#)

Click **Next** to continue

Back

Next

步驟5.輸入長度為8-63個字元的安全金鑰或密碼。按一下下一步繼續。

Configure Radio 1 - Secure Your Wireless Network

Select your network security strength.

- Best Security (WPA2 Personal - AES)
Recommended for new wireless computers and devices that support this option.
Older wireless devices might not support this option.
- Better Security (WPA/WPA2 Personal - TKIP/AES)
Recommended for older wireless computers and devices that might not support WPA2.
- No Security (Not recommended)

Enter a security key with 8-63 characters.

.....|



Below Minimum

Show Key as Clear Text

[? Learn more about your network security options](#)

Click **Next** to continue

Back

Next

步驟6.在 *VLAN ID* 欄位中，輸入無線網路的VLAN ID，然後按一下**Next**。

附註：在本例中，10用作VLAN ID。

Configure Radio 1 - Assign The VLAN ID For Your Wireless Network

By default, the VLAN ID assigned to the management interface for your access point is 1, which is also the default untagged VLAN ID. If the management VLAN ID is the same as the VLAN ID assigned to your wireless network, then the wireless clients associated with this specific wireless network can administer this device. If needed, an access control list (ACL) can be created to disable administration from wireless clients.

Enter a VLAN ID for your wireless network:

VLAN ID:

Range: 1 - 4094)

[? Learn more about vlan ids](#)

Click **Next** to continue

Back

Next

步驟7.在5 GHz網路的Configure Radio 2頁面中，在*Network Name(SSID)*欄位中輸入您的首選SSID，然後按一下**Next**。預設值為ciscosb_5GHz。

附註：此步驟僅適用於使用雙無線電的WAP。

Configure Radio 2 - Name Your Wireless Network

The name of your wireless network, known as an SSID, identifies your network so that wireless devices can find it.

Enter a name for your wireless network:

Network Name (SSID):

For example: MyNetwork

[? Learn more about network names](#)

Click **Next** to continue

Back

Next

步驟8.選擇無線網路的安全型別。

附註：在此範例中，已選擇最佳安全性（WPA2個人 — AES）。

Configure Radio 2 - Secure Your Wireless Network

Select your network security strength.

Best Security (WPA2 Personal - AES)

Recommended for new wireless computers and devices that support this option.
Older wireless devices might not support this option.

Better Security (WPA/WPA2 Personal - TKIP/AES)

Recommended for older wireless computers and devices that might not support WPA2.

No Security (Not recommended)

Enter a security key with 8-63 characters.

Below Minimum

Show Key as Clear Text

[? Learn more about your network security options](#)

Click **Next** to continue

Back

Next

步驟9.輸入長度為8-63個字元的安全金鑰或密碼。按一下下一步繼續。

Configure Radio 2 - Secure Your Wireless Network

Select your network security strength.

Best Security (WPA2 Personal - AES)

Recommended for new wireless computers and devices that support this option.
Older wireless devices might not support this option.

Better Security (WPA/WPA2 Personal - TKIP/AES)

Recommended for older wireless computers and devices that might not support WPA2.

No Security (Not recommended)

Enter a security key with 8-63 characters.

Below Minimum

Show Key as Clear Text

步驟10.輸入VLAN ID，然後按一下Next。

附註：在本例中，20用作VLAN ID。

Configure Radio 2 - Assign The VLAN ID For Your Wireless Network

By default, the VLAN ID assigned to the management interface for your access point is 1, which is also the default untagged VLAN ID. If the management VLAN ID is the same as the VLAN ID assigned to your wireless network, then the wireless clients associated with this specific wireless network can administer this device. If needed, an access control list (ACL) can be created to disable administration from wireless clients.

Enter a VLAN ID for your wireless network:

VLAN ID: (Range: 1 - 4094)

[? Learn more about vlan ids](#)

Click **Next** to continue

Back

Next

步驟11.按一下下一步跳過強制網路門戶配置。

Enable Captive Portal - Create Your Guest Network

Use Captive Portal to set up a guest network, which means that wireless users need to be authenticated before they can access the Internet. For example, a hotel can create a guest network to redirect new wireless users to a page for authentication.

Do you want to create your guest network now?

- Yes
- No, thanks.

[? Learn more about captive portal guest networks](#)

Click **Next** to continue

Back

Next

步驟12.檢查並確認設定，然後按一下「Submit」。

Summary - Confirm Your Settings

Please review the following settings and ensure the data is correct.

Radio 1 (2.4 GHz)

Network Name (SSID):	ciscosb_2.4GHz
Network Security Type:	WPA2 Personal - AES
Security Key:	*****
VLAN ID:	10

Radio 2 (5 GHz)


Network Name (SSID):	ciscosb_5GHz
Network Security Type:	WPA2 Personal - AES
Security Key:	*****
VLAN ID:	20

Click **Submit** to enable settings on your Cisco Wireless Access Point

步驟13.出現「Device Setup Complete (裝置設定完成)」螢幕後，按一下**Finish**。

附註：您將從基於Web的實用程式頁面註銷。

Device Setup Complete

 Congratulations, your access point has been set up successfully. We strongly recommend that you save these settings by writing them down or by copying and pasting them into a text document. You will need these settings later when you add other wireless computers or devices to your network.

Cluster Name:	Cisco001
---------------	----------

Radio 1 (2.4 GHz)

Network Name (SSID):	ciscosb_2.4GHz
----------------------	----------------

Network Security Type:	WPA2 Personal - AES
------------------------	---------------------

Security Key:	password123
---------------	-------------

Radio 2 (5 GHz)

Network Name (SSID):	ciscosb_5GHz
----------------------	--------------

Network Security Type:	WPA2 Personal - AES
------------------------	---------------------

Security Key:	*****
---------------	-------



Click **Finish** to close this wizard.

Back

Finish

現在，您已成功將SSID對映到接入點上的VLAN。