

€ é ŽæŒ#ä»æ;Œä»<é ç(CLI)è " å®šä°æ »

ç>®æ™

ææ-æ-†æ ä¾¼å |, ä½•é é ŽæŒ#ä»æ;Œä»<é ç(CLI)è " å®šä°æ »å™ " ä,šçš,,é€£çµ »å±æŽçç'

ç°;ä»<

LLDPä½;è£ ç½@èf½åå å'és " å¾Œæ°†è³†æ-™å,,²å~åœ " ç@jç tè³†è " Šå«(MIB)ä,çš,,ç,é,,°è£ ç½@é
Discovery

Protocol(CDP)èf½æ~é;žå¼¼çš,,å"å®š¼Œæ½†ä, »åŒæ¹<è™•åœ " æ-¼LLDPä;fé²ä°†ä¾¼æ†%å•†ä

LLDPå "ç" " æ-¼æ,, "éœ€è | »åœ " é ŽæŒ çš'å°^æœ%è£ ç½@å'Œæ€ çš'å°^æœ%è£ ç½@ä¹<é-
[Network Management](#))ç" "ä¾¼†ç™¼ç¾¼ç¶²è-ä,çš,,è£ ç½@çš,,å"å®šä¹<ä,€ã€,

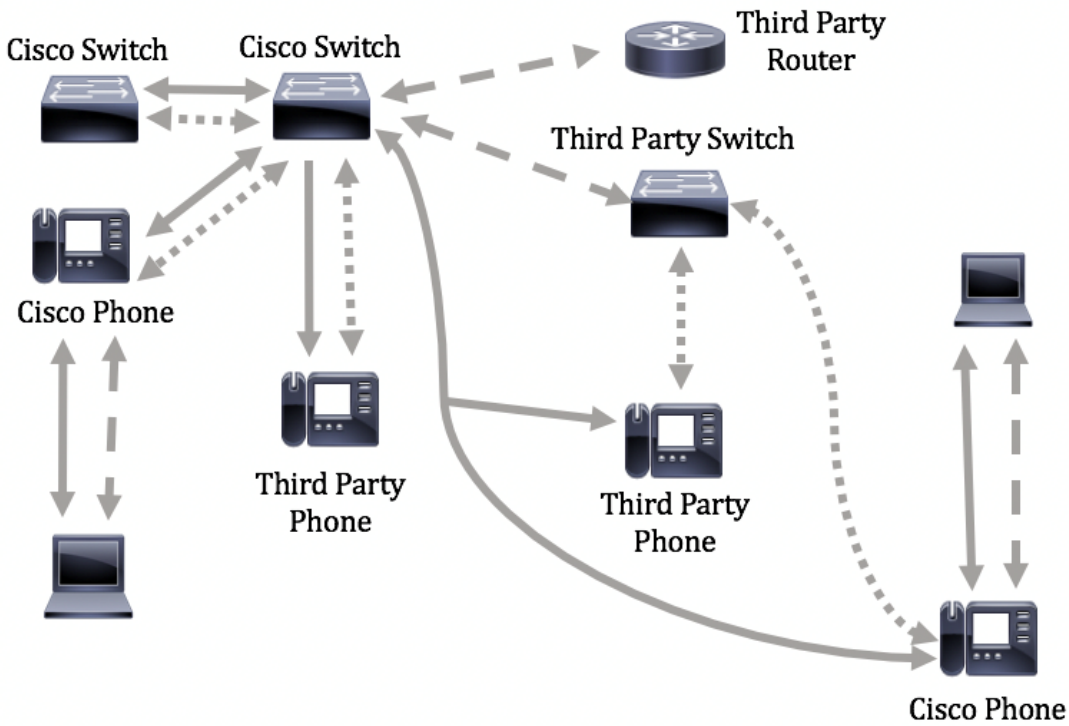
LLDPå' é«"ç«-é»žç™¼ç¾¼(MED)æ »ä¾¼æ" "æ »å'å' é«"ç«-é»žè£ ç½@çš,,é; »å-åŠŸèf½¼Œæ¾¼å |,ç
MEDç¶²è-ç-ç•¥æ" "ç" " æ-¼å »æ™,æ†%ç" "¼å |,èªžÉŸæ^-å½±ç%å†¼%çš,,ä,€çµ,,é... ç½@è "å®šä

ç¼@šçš,,LANä°æ »æ©Ÿå "èf½é€£çšä°†å...æœ%å,å^—ä»»ä,€åŠŸèf½é†çš,,è£ ç½@¼š

- åf...æ" "æ »LLDP-MEDçš,,è£ ç½@¼š^ä¾¼å |,ç-ä, %æ-¹é»è©±¼%
- åf...æ" "æ »CDPçš,,è£ ç½@¼š^ä¾¼å |,è¼fè^šçš,,Ciscoä°æ »æ©Ÿæ^-è¼fè^šçš,,Ciscoé»è©±¼%
- åf...æ" "æ »LLDPçš,,è£ ç½@¼š^ä¾¼å |,ç-ä, %æ-¹è-ç" "±å™ "æ^-ç-ä, %æ-¹ä°æ »æ©Ÿ¼%
- åŒæ™,æ" "æ »LLDPå'ŒCDPçš,,è£ ç½@¼š^ä¾¼å |,Ciscoè-ç" "±å™ "¼%
- åŒæ™,æ" "æ »LLDP-MEDå'ŒCDPçš,,è£ ç½@¼š^ä¾¼å |,Ciscoé»è©±¼%
- æ" "æ »LLDPä€LLDP-MEDå'ŒCDPçš,,è£ ç½@¼š^ä¾¼å |,Ciscoä°æ »æ©Ÿ¼%

ä,åœ-é;ç°CDPå'ŒLLDPæ^-LLDP-

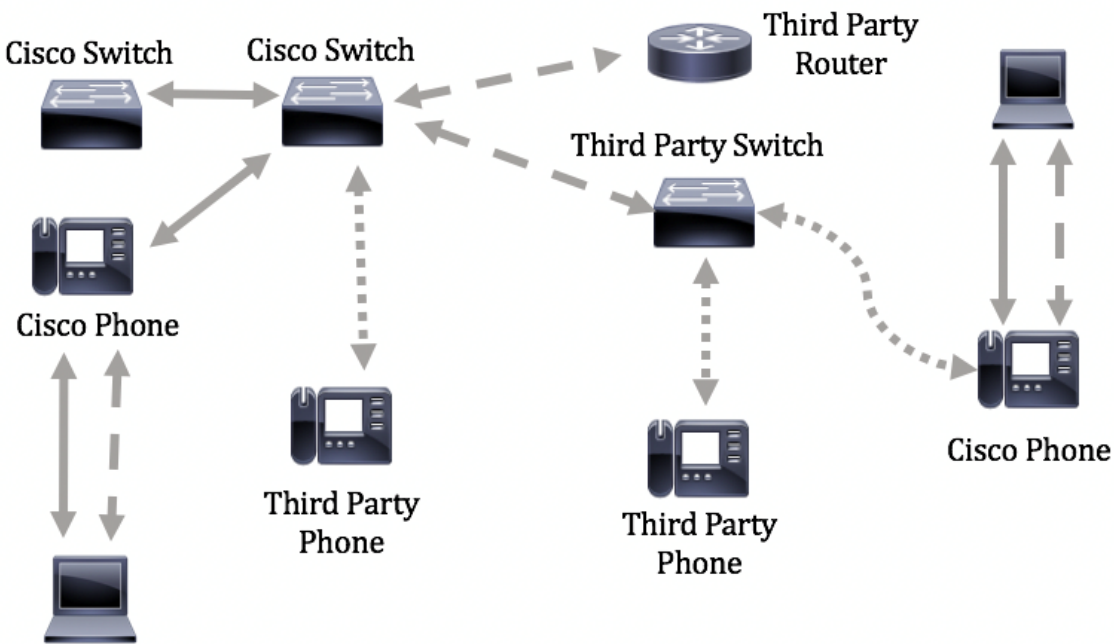
MEDå"å®šåŒæ™,åœ " Ciscoè£ ç½@ä,Šé<è;Œçš,,å'æ™^-ã€æ,,å"å" »¥é... ç½@è²æŽšå^¶å...



Legend:

- Cisco Discovery Protocol
- LLDP-MED
- - - - LLDP

ä, <åœ-é; çœ°â-²ç>, æ‡%œåœ°é... ♦ç½@â♦"â@šä, çš,, æŽšâ^¶çš,, â ´æ™¯i¼šCDPç" æ-¼Ciscoè£♦ç½@ä¹‹é-"I" MEDç" æ-¼Ciscoâ'CEç-ã, %œæ-¹è£♦ç½@ä¹‹é-"ã€,



é‡♦è!♦è³†è"Š:LLDP- MEDç¶è-ç-ç•¥é... ♦ç½@æ~æœé... ♦ç½@çš,, â... ^æ±°æç♦ä»¶ã€, è | ♦çžèš£â |, ä½•é€šé♦Žâÿ°æ-¼Web

CLI $\text{ā} \text{ž} \text{æ} \text{Œ} \text{‡} \text{ç} \text{°} \text{i} \text{¼} \text{Œ} \text{ē} \text{«} \text{æ} \text{Œ} \text{°} \text{ā} \text{,} \text{€} \text{ä} \text{,} \text{€} \text{€} \text{™} \text{ē} \text{Œ} \text{ā} \text{€} \text{,}$

é © ç ° ° è £ ç ½ ®

- Sx300ç³»ā^—
- Sx350ç³»ā^—
- SG350Xç³»ā^—
- Sx500 ç³»ā^—
- Sx550Xç³»ā^—

è»ÿé«'ç%°^æœ¬

- 1.4.7.05 - Sx300ā€↔Sx500
- 2.2.8.4 - Sx350ā€↔SG350Xā€↔Sx550X

é€šéŽCLIE... ç½®ā°ææ»æ©ÿä,Šçš,,LLDP-MEDāÿ è ° ā®š

ç½®è·ç-ç·Ÿç™¼ç½®æ~æœœéé‡èè | çš,,āŠÿèf½ā¹<ä,€i¼Œā> ç,°ā®fç,°ā°ææ»æ©ÿæ»æ»ä¾ā°tä,€ç™®

ç½®è·ç-ç·Ÿi¼^āi,æžœā.²é... ç½®i¼°ā»ä»ŸāŒ...æ¬āœ ° ā^°é€Œç·šçš,,LLDPā'é«"çμ,ç«è£ç½®çš,,ā,³

- āœ°VLAN 10ä,Šä»Ÿæ™ç±æ³‡æ¬™āŒ...ā'Œ802.1pā,,ā...^é †ā°5ā,³é€è°žéÿ³æμé†ā€,
- ā½çç»ā€ā^Ÿæœœ»ā™ä»Œç¼é»ž(DSCP)46ā,³é€è°žéÿ³æμé†ā€,

ä¾é è °i¼Œä°ææ»æ™ æ²æœœ%ā.²è ° ā®šçš,,ç½®è·äŽÿā%°†ā€,é è ° çš,, LLDP-MED ā... āÿÿā'Œä»é çè ° ā®šā | ,ä,¼š

āŠÿèf½	é è ° ° ā®š
LLDP-MEDç½®è·ç-ç·Ÿè°žéÿ³	è†ā<•
LLDP-MEDā¼«é€ÿā·ÿā<•é‡èæ±è°^æ•, 3	
LLDP-MEDāŠÿèf½i¼^ä»é ç i¼%	æ~
LLDP-MEDç½®è·ç-ç·Ÿi¼^ä»é ç i¼%	æ~i¼^è†ā<•i¼%
LLDP-MEDä½ç½®i¼^ä»é ç i¼%	ā
LLDP-MED PøEi¼^ä»é ç i¼%	ā

LLDP-MEDé€šçŸŸi¼^ä»«é€ Ći¼%o	ã²ç!€ç'''
LLDP-MEDã°«ã~i¼^ä»«é€ Ći¼%o	ã€

é€€è|€è³èè Ši¼šç”±æ-¼é €è”æf...æ³€ä,ã...”ãŸŸæ€šç|€ç'''LLDPi¼Œæã¿...é^æœ”é...€ç½@ã
 MEDè”ãšã¹ã%o€ã...^ãŸç'''ã@fã€è|€ãœ”ã°ææ€»æ©Ÿä,šçš,,LLDP-MEDé...€ç½@ã...”ãŸŸæ€šLLDPã±

æªçè|-ã°ææ€»æ©Ÿä,šçš,,LLDP-MEDé...€ç½@è”ãš

æŸ€©Ÿ1.ç™»ã...Ÿã°ææ€»ã™”ä,»æžšã°ã€è€è”çš,,ã½çç”è€...ã€€ç”±ãŒæã”tçç¼æ~
 cisco/ciscoã€ã,ã|,æžœæ,ã²è”ãšæ-°çš,,ã½çç”è€...ã€€ç”±æ^-ã”tçç¼i¼Œæ««æ”ç,°è¼,ã...Ÿèª€è%o

```
User Name:cisco
Password:*****
```

æ³”æ,,€i¼šç€™ã°ã¼ä»ã¿èf½ã”ã°ææ€»æ©ŸŸçš,,çç°ã^†ãžçè™Ÿè€Œçç°ã€ãœ”æçç”ã¼ã,¼ŒSG350
 ä°ææ€»ã™”æ~é€€€ž Telnetã”ã-ã€

æŸ€©Ÿ2.è|€éjç”èè|€é...€ç½@çš,,ãŸçš,,ç•Ÿã%o€é...€ç½@è”ãši¼Œæ««è¼,ã...Ÿä»Ÿã,ã...šã®i¼š

```
SG350X#show lldp med configuration [interface-id | è³ç´°]
```

é€€é...ãŒ...æ<-i¼š

- interface-id â€” i¼^ã€-é€i¼%oæŒ†ãšãŸ IDã€
- detailed â€” i¼^ã€-é€i¼%oéjç”è™çç•Ÿã%o€ãŸã¹ã”çš,,é€žçç•Ÿã%o€ãŸçš,,è³èè”šã€

æ³”æ,,€i¼šçæœ”æœ-çç°ã¼ã,¼ŒŒéjç”ège1/0/5çš,,LLDPé...€ç½@è”ãšã€ãŒ†ãšã»«é€ççš,,LLDP-
 MEDé...€ç½@è”ãšã...”éƒ”è”ãšç,°é€è”ã¼ã€

```
SG350X#show lldp med configuration ge1/0/5

Port      Capabilities  Network  Location  POE  Notifications  Inventory
-----
gi1/0/5   Yes           Yes      No        No   Disabled        No

Network policies:
SG350X#
```

çç¼æœ”i¼Œæ”æ†%oèç²ã²çŸ”éššé€žCLiæ^ãšŸæªçè|-ã°ææ€»æ©ŸŸä,šçš,,LLDP-
 MEDè”ãšã€

ãœ”ãŸ ä,šçç|€ç'''LLDP-MED

SG350X#configure

SG350X#configure

SG350X(config)#interface [interface-id]

SG350X(config)#interface [interface-id]

```
SG350X#configure
SG350X(config)#interface ge1/0/5
SG350X(config-if)#
```

SG350X(config)#lldp med disable

SG350X(config)#lldp med disable

```
SG350X#configure
SG350X(config)#interface ae1/0/5
SG350X(config-if)#lldp med disable
SG350X(config-if)#
```

SG350X(config)#lldp med disable

```
SG350X#configure
SG350X(config)#interface ge1/0/5
SG350X(config-if)#lldp med disable
SG350X(config-if)#end
SG350X#
```

SG350X(config-if)#end

```
SG350X(config-if)#end
SG350X#show lldp med configuration ge1/0/5
```

Port	Capabilities	Network policy	Location	POE	Notifications	Inventory
gi1/0/5	No	No	No	No	Disabled	No

```
Network policies:
SG350X#
```

SG350X#

é... ½@LLDP-MED àÿ è" à@š

àœ"àÿ ä,Šé... ½@LLDP-MED è" à@šà ã»¥é,æ"½LLDP-MED àž:à^¥é•à°| à€¼(TLV)à'œ/æ^-è| àœ...æ-àœ"æ ãœ<à><é çš,,à,³à°LLDP-MED ééšà Šä,çš,,ç"²è· ç-ç•¥ã€,LLDP-MED TLVç"" æ-¼æ èç"à"à@šà,³è¼,çš,,à-@àœ<è³±è" Šã€,

æ¥é©ÿ1.àœ"à°æ ãœ"àÿçš,,ç%0¹æ-ŠEXECæ"jà¼ ä,¼œ¼,à...¥à»¥ä,à'½ä»æé²à...¥à... "àÿæéšé... ç

SG350X#configure

æ¥é©ÿ2.ééšç Žè¼,à...¥ä»¥ä,à'½ä»æ¼,à...¥æ, "è| é... ½@çš,,ä»<é ç"¼š

æ³"æ,, ã¼šç"ä; ééçç:šà^æàÿ çš,,èç ½@æ"æ'LLDP¼œä¼<à|,æé çš'è»è©±ã€ ç-à, %0æ-

SG350X(config)#interface [interface-id]

æ³"æ,, ã¼šàœ"àœ-ç"ä¼<ä,¼œä¼ç"ä»<é çge1/0/5ã€,

```
SG350X#configure
SG350X(config)#interface ge1/0/5
SG350X(config-if)#
```

æ¥é©ÿ3.è| àœ"ç%0¹à@šàÿ ä,Šà@šç¼@LLDP-MED è" à@š¼œè<<è¼,à...¥ä»¥ä,à...šà@¹¼š

SG350X(config-if)#lldp med enable [tlv]

é,é ...àœ...æ-¼š

- enable àœ" àœ"àÿ ä,Šà•ÿç"LLDP-MEDã€,
- tlv àœ" æœ¼à@šæ¼%0œ...ãœ«çš,,TLVã€,à ç" çš,,TLVàœ...æ-¼š
 - network-policy àœ" æœ¼à@šæ~ãœ| à,³è¼,ç"²è· ç-ç•¥TLVã€,
 - location àœ" æœ¼à@šæ~ãœ| à,³è¼,ä¼ ç½@TLVã€,
 - poe-pse àœ" æœ¼à@šæ~ãœ| à,³è¼,ä¼¹™à"ç"²ä¼>é»èç½@ (PoE-PSE)ã€,
 - æ,...à-@ àœ" æœ¼à@šæ~ãœ| à,³è¼,æ,...à-@TLVã€,

æ³"æ,, ã¼šé è" æf...æ³ ä,¼œLLDP-MED ä¼ç" ç"²è· ç-ç•¥TLVà•ÿç""ã€,à|,æžœà•ÿç"LLDP-MED¼œà%0±àšçµ,àœ...æ-àŠÿèf½TLVã€,

```
SG350X#configure
SG350X(config)#interface ge1/0/5
SG350X(config-if)#lldp med enable network-policy
SG350X(config-if)#
```

æ¥é©ÿ4.¼^à é,¼%0è| èç"àžàÿ çš,,LLDP-MED è" à@š¼œè<<è¼,à...¥ä»¥ä,à...šà@¹¼š

SG350X(config-if)#nolldp med

æ¥é©ÿ5.è| àœ"àÿ ä,Šà@šç¼@LLDP-MED ç"²è· ç-ç•¥¼œè<<è¼,à...¥ä»¥ä,à...šà@¹¼š

SG350X(config)#lldp med network-policy [add | remove] <number>

é,é ...âĒ...æ<-i'4š

- æ-°âçžæ^-â^âé™æç.™ÿ â€”
- ç,æ†%âœ°â°†æĒ†â@šçš,,çŒ²è.ç-ç•Ÿé™,,âš â^°â»«éĒçæ^-â°†â...Œâ^âé™æã€,
- number â€” æĒ†â@šçŒ²è.ç-ç•Ÿâ°â^-è™ÿã€,ç,„âœĒç,°1-32

æ³æ,,Ēi'4šâ°Ēæ-¼æĒâ€ĀŸi'4Ēæ,â°âèf½ç,°æĒâ€Āæ†%ç”i'4â!„èâžéŸ³ã€ĒèâžéŸ³ä;ä»æç%oi'4š

```
SG350X(config)#interface ge1/0/5
SG350X(config-if)#lldp med enable network-policy
SG350X(config-if)#lldp med network-policy add 1
SG350X(config-if)#
```

æŸé©Ÿ6.i'4^âĒé,ï¼%œè|Ēâ¾žâŸâ^âé™æ%œæœ%œLLDP-MEDçŒ²è.ç-ç•Ÿi'4Ēè«è¼,â...Ÿä»Ÿä,â...šâ®i'4š

SG350X(config-if)#nollldp med network-policy [number]

æŸé©Ÿ7.i'4^âĒé,ï¼%œè|Ēâœç%œâ®šâŸäšé...ç½®â,³é€LLDP-MEDæ“æ²æ’æ”¹ç°jâ-®çŒ²è.ç®jçĒ†â°â®š(SNMP)é€šçŸŸi'4Ēè«è¼,â...Ÿä»Ÿä,â...šâ®i'4š

SG350X(config-if)#lldp med notifications topology-change [enable |ç|ç”]

é,é ...âĒ...æ<-i'4š

- enable â€” â...Ēè ±â,³é€LLDP-MEDæ“æ²æ’æ”¹é€šçŸŸã€,
- disable â€” çĒæĀâ,³é€LLDP-MEDæ“æ²æ’æ”¹é€šçŸŸã€,

æ³æ,,Ēi'4šâœ”æçœ°â¾â,ï¼Ēæâ•Ÿç”SNMPé€šçŸŸã€,Ēèè”â®šç,°Disabledã€,

```
SG350X#configure
SG350X(config)#interface ge1/0/5
SG350X(config-if)#lldp med enable network-policy
SG350X(config-if)#lldp med network-policy add 1
SG350X(config-if)#lldp med notifications topology-change enable
SG350X(config-if)#
```

æŸé©Ÿ8.èĒé...ç½®âŸçš,,LLDP-MEDçš,,â½Ēç½®è³†è”š”i'4Ēè«è¼,â...Ÿä»Ÿä,â...šâ®i'4š

SG350X(config-if)#lldp med location {[coordinate data] | [â...æ°\âœ°âĒé³†æ™] | [ecs-elin data]}

é,é ...âĒ...æ<-i'4š

- â°šæ™è³†æ™â€”
- â»ŸâĒâ...é€²â½ĒâĒŒæ ¼â¼Ēâ°†â½Ēç½®è³†æ™æĒ†â®šç,°â°šæ”™ã€,é€™æ”ĒâĒŸçµ!„
- civic-address data â€”
- â»ŸâĒâ...é€²â½ĒâĒŒæ ¼â¼Ēâ°†â½Ēç½®è³†æ™æĒ†â®šç,°â...-æ°\âœ°âĒéã€,é€™æ”Ēæœ
- ecs-elin data â€”
- â»Ÿâ

- data â€” ä»¥ANSI/TIA

1057ä,â@šç¾@çš,,æ ¼å¼¼ æCE†â@šä½ ç½@è³†æ-™i¼š»žâ^†â ä...é€²ä½ ä^¶è³†æ-™ä€,â

```
SG350X(config-if)#lldp med notifications topology-change enable
SG350X(config-if)#lldp med location civic-address 12AB34CD56EF
SG350X(config-if)#lldp med location ecs-elin 12AB34CD56EF78AB90CD12EF
SG350X(config-if)#
```

æ¥é©Ÿ9.è¼,â...¥endâ½ä»æç%¹æ-ŠâŸ.è;Eä,Šä,æ-†i¼š

SG350X(config-if)#end

```
[SG350X(config-if)#lldp med location civic-address 12AB34CD56EF
[SG350X(config-if)#lldp med location ecs-elin 12AB34CD56EF78AB90CD12EF
[SG350X(config-if)#end
SG350X#
```

æ¥é©Ÿ10ä€,i¼^â é,ç½@çš,,è ä@š¼CEè«è¼,â...¥ä»¥ä,â...Šâ®¹i¼š

SG350X#show lldp med configuration [interface-id]

```
SG350X(config-if)#end
SG350X#show lldp med configuration ge1/0/5
```

Port	Capabilities	Network policy	Location	POE	Notifications	Inventory
gi1/0/5	Yes	Yes	No	No	Enabled	No

```
Network policies: 1
Location:
Civic-address: 12:ab:34:cd:56:ef:78:ab:90:cd:12:ef
Ecs-elin: 12:ab:34:cd:56:ef:78:ab:90:cd:12:ef
SG350X#
```

æ¥é©Ÿ 11. i¼^é,ç»i¼%âœ ä°æ»â™ çš,,ç%¹æ-Š EXEC

æ;¼ä,ç¼CEè¼,â...¥ä»¥ä,æCE†â»â ä°†é... ç½@çš,,è ä@šä,,â~â^â•Ÿâ•çµ,,æ...æª¼š

SG350X#copy running-config startup-config

```
[SG350X#copy running-config startup-config
Overwrite file [startup-config]... (Y/N)[N] ?
```


SG350X# copy running-config startup-config
Overwrite file [startup-config]... (Y/N) [M] **Y**
16-May-2017 05:45:25 %COPY-I-FILECPY: Files Copy - source URL running-config destination
URL flash://system/configuration/startup-config
16-May-2017 05:45:28 %COPY-N-TRAP: The copy operation was completed successfully
SG350X#

SG350X# copy running-config startup-config
Overwrite file [startup-config]... (Y/N) [M] **Y**
16-May-2017 05:45:25 %COPY-I-FILECPY: Files Copy - source URL running-config destination
URL flash://system/configuration/startup-config
16-May-2017 05:45:28 %COPY-N-TRAP: The copy operation was completed successfully
SG350X#

SG350X# copy running-config startup-config
Overwrite file [startup-config]... (Y/N) [M] **Y**
16-May-2017 05:45:25 %COPY-I-FILECPY: Files Copy - source URL running-config destination
URL flash://system/configuration/startup-config
16-May-2017 05:45:28 %COPY-N-TRAP: The copy operation was completed successfully
SG350X#

SG350X# copy running-config startup-config
Overwrite file [startup-config]... (Y/N) [M] **Y**
16-May-2017 05:45:25 %COPY-I-FILECPY: Files Copy - source URL running-config destination
URL flash://system/configuration/startup-config
16-May-2017 05:45:28 %COPY-N-TRAP: The copy operation was completed successfully
SG350X#

SG350X# copy running-config startup-config
Overwrite file [startup-config]... (Y/N) [M] **Y**
16-May-2017 05:45:25 %COPY-I-FILECPY: Files Copy - source URL running-config destination
URL flash://system/configuration/startup-config
16-May-2017 05:45:28 %COPY-N-TRAP: The copy operation was completed successfully
SG350X#

關於此翻譯

思科已使用電腦和人工技術翻譯本文件，讓全世界的使用者能夠以自己的語言理解支援內容。請注意，即使是最佳機器翻譯，也不如專業譯者翻譯的內容準確。Cisco Systems, Inc. 對這些翻譯的準確度概不負責，並建議一律查看原始英文文件（提供連結）。