

åæ`RV042ã€?RV042Gå'ÆRV082

VPNè·ç"±å™¨ ä,Šé€šé?ŽWindowsé...?ç½®Shrew

VPNå®çæ^¶ç«

ç>®æ™

è™,æ"¬å^ç"ç¶è·(VPN)æ¨ä,€ç"®é ç«¬ä½ç" è€...éšéŽInternetè™,æ"¬é€ç·šå^å^ç" ç¶è· VPN

Clientæ¨åæ¨ é ç«¬ä,æ©ÿè€ ç½®ä,Šé... ç½®çš,,è»ÿé«"i¼Æå¨ æ¨¨¨ä¾ç°jå-®å'Æå®%å

ææ¬æ¬æ"æ"çš,,ç>®çš,,æ¨å¨æ¨,¨ å±·ç"å¨,¨ ä½·ç,¨ é€ç·šå^RV042ã€?RV042Gæ^¬RV082

VPNè·ç"±å™¨ çš,,é»è...|é... ç½®Shrew VPNå®çæ^¶ç«¬ã€,

æ"æ,,¨i¼šææ¬æ¬æ"æ"å¨æ¨å¨šæ,,¨ å²ç¶"åæ¨Windowsé»è...|ä,Šä,«è¼%å¨+Shrew

VPNå®çæ^¶ç«¬ã€,å¨|å%#i¼Ææ,,¨ éœèè|¨é... ç½®å®çæ^¶ç«¬¬å^ç¶é—œVPNé€ç·ši¼Æç,,¨

[VPNè·ç"±å™¨¨ä,Šçš,,VPNå®çæ^¶ç«¬è¨å®šé ç«¬è¨å¨éššé¨"i¼å®çæ^¶ç«¬¬å^ç¶é—œi¼%å¨ã€,](#)

é?©ç"¨ è€ç½®

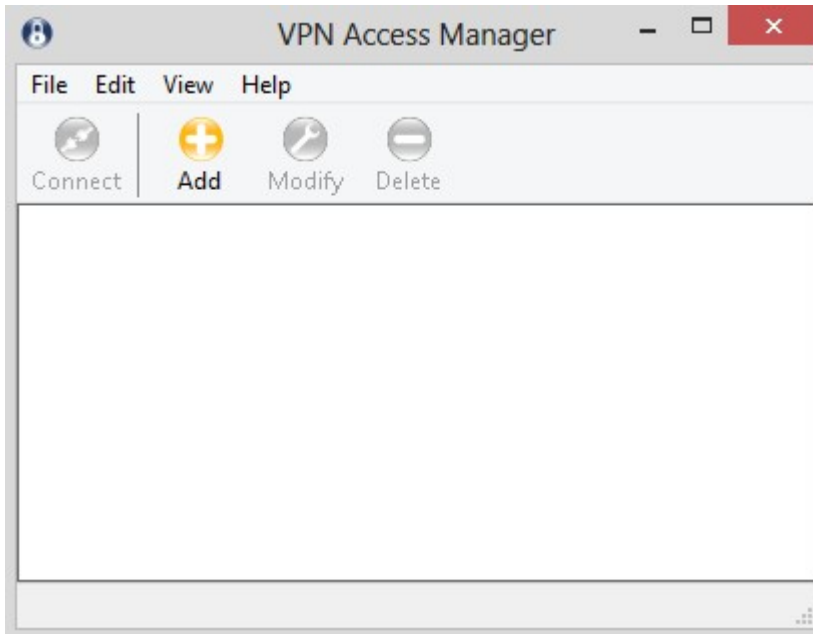
- RV042
- RV042G
- RV082

è»ÿé«"ç%å^ææ¬

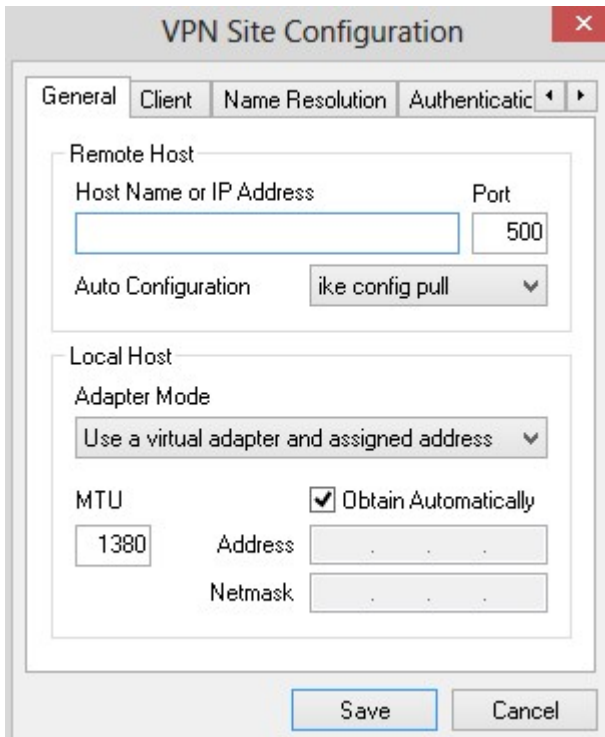
- v4.2.2.08

é... ç½®Windowsä,Šçš,,Shrew VPNå®çæ^¶ç«¬ é€ç·š

æŸé©ÿ1.æÆ%å¨, €ä, «é»è...|ä,Šçš,,Shrew VPN Clientç¨«å¼¨ä,|é¬å·ÿå®fã€,Show Soft VPN Access Managerè|¬çª—é¬å·ÿi¼š

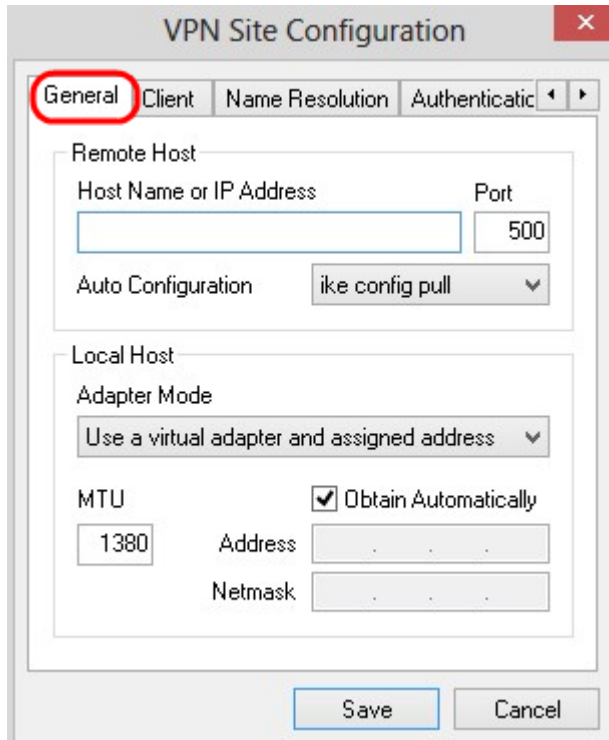


Click the **Add** button to add a new VPN Site Configuration.



Click the **Save** button to save the configuration.

Click the **General** tab to configure the general settings.

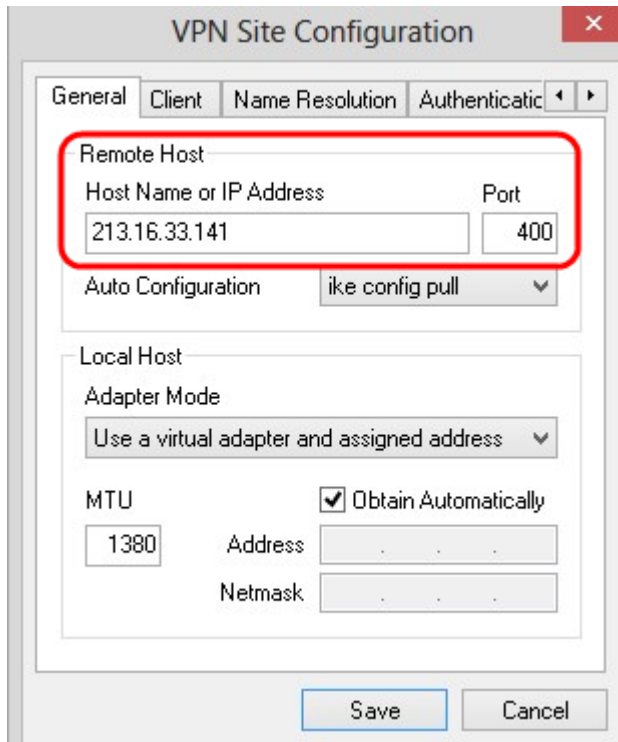


æ³·æ,, ðï¼šGeneraléf·â†ç”æ-¼é... ç½®é ç«-â'Ææœ-âœ°ä,»æ©ÿIPâœ°â ð€ã€„é€™ä°>â¼•

æŸ€©ÿ2.âœ”Host Name or IP

Addressæ¬,â½ ðä¼¼Æè¼,â...Ÿé ç«-ä,»æ©ÿIPâœ°â ð€¼Æâ ð³â·²é... ç½®WANçš,,IPâœ°â ð€ã€„

æŸ€©ÿ3.âœ”â€œPortâ€œ æ¬,â½ ðä¼¼Æè¼,â...Ÿç” æ-¼é€£ç·šçš,,é€£ç·šâÿ è™ÿç¼ã€„âœ-ä,æ%œ



æŸ€©ÿ4.âœ”â€œAuto

Configurationâ€œ ä,æ<%â¼ ðæ,...â-®ä,é ðæ”†æ%œéœ€çš,,çµ,,æ...<ã€„

·ç| ç” â€” ç| ç” é ð,é ...ç| ç” »â½·è†â•ââçæ^¶ç«-é... ç½®ã€„

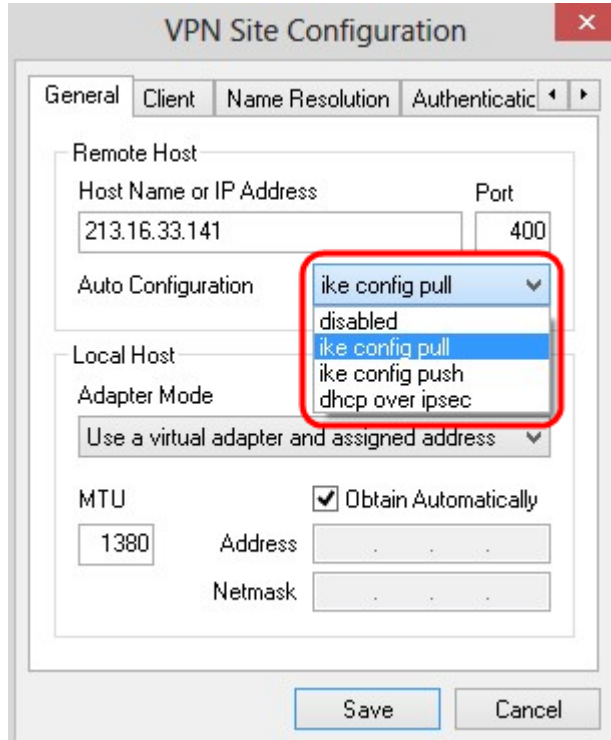
· IKE Config Pull

... à... è " ±â@çæ^¶ç« ¯â¼žé»è... | è " â@šè«æ±,ã€ ,âœ " é»è... | æ" æ Pullæ-¹æ³•çš,,æf...æ³ ä, <i>

· IKE Config Push

ä½¼é»è... | æœ%æ©ÿæœfé€šŽé... ç½®éŽç " <â@çæ^¶ç« ¯æ¼»è " â@šã€ ,âœ " é»è... |

· DHCP Over IPsec ä½¼â@çæ^¶ç« ¯æœ%æ©ÿæœfé€šŽDHCP over IPsecâ¼žé»è... | è«æ±,è " â@šã€ ,



æ¥é©ÿ5.â¼žAdapter Modeä, <æ<%œ,â-®ä,i¼Œæ¹æ"šAuto

Configurationç,°æœ-âœ°ä,æ©ÿé,æ"†æ%œéœ€çš,,ä»<éçâjæ " j¼ä€ ,

· ä½¼ç " è™,æ"-ä»<éçâjâ'Œâ^t é... çš,,âœ°â€ â€

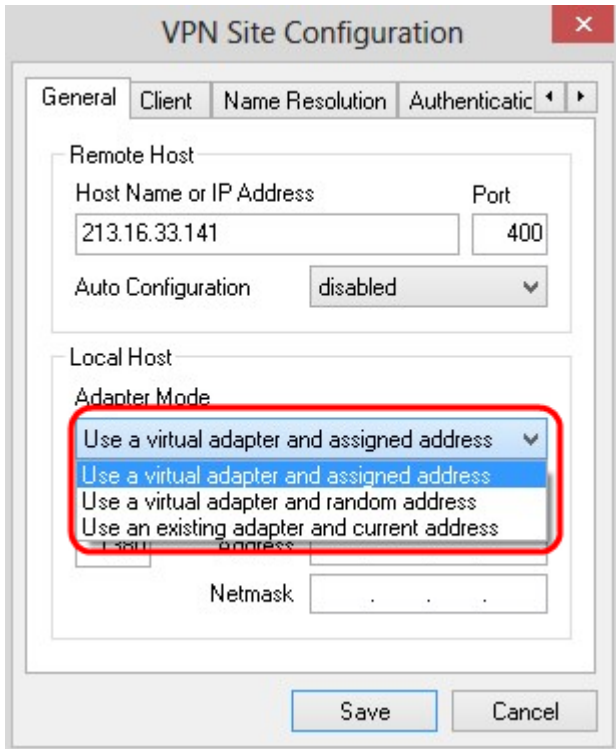
â... è " ±â@çæ^¶ç« ¯ä½¼ç " " â...:æœ%æŒ†â@šâœ°â€çš,,è™,æ"-ä»<éçâjã€ ,

· ä½¼ç " è™,æ"-ä»<éçâjâ'Œéš " æ©ÿâœ°â€€ â€

â... è " ±â@çæ^¶ç« ¯ä½¼ç " " â...:æœ%œéš " æ©ÿâœ°â€çš,,è™,æ"-ä»<éçâjã€ ,

· ä½¼ç " " ç¼æœ%ä»<éçâjâ'Œç•¶â%âœ°â€€ â€

ä½¼ç " " ç¼æœ%ä»<éçâjâ'šâ...¶âœ°â€€ã€,ä,éœ€è | è¼,â...¥â...¶ä»-è³†è " šã€,



8. Adapter Mode, Use a Virtual Adapter and Assigned

Address MTU (MTU) 1380

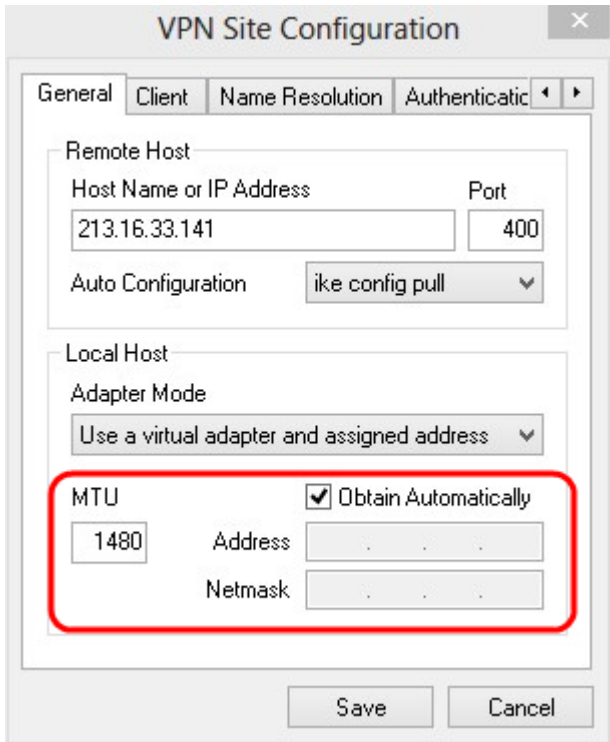
7. Automatically

8. Adapter Mode, Use a Virtual Adapter and Assigned

Address IP

9. Adapter Mode, Use a Virtual Adapter and Assigned Address

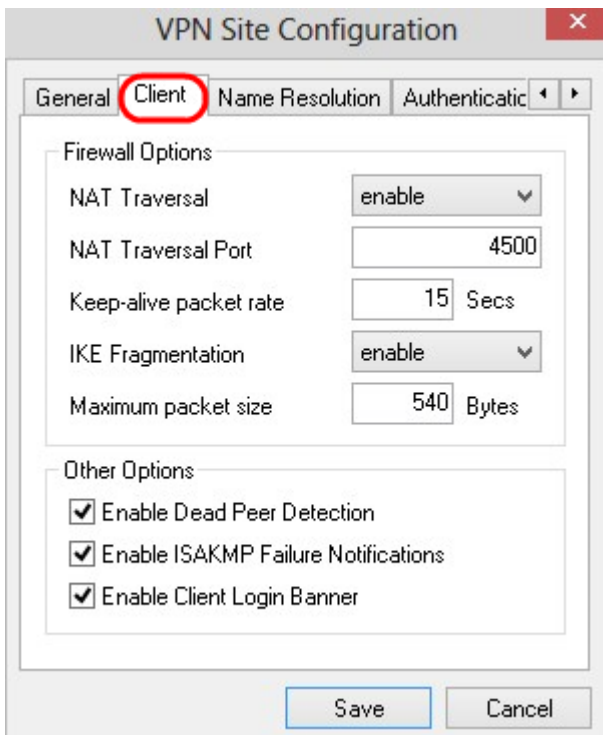
Netmask



Step 10. Click **Save**.

Step 11: Client Configuration

Step 11. Click **Client**.



Step 12. Click **Save**.

Step 13: NAT Traversal

Step 13. In the **Firewall Options** section, click **NAT Traversal**.

·ç!ç" â€" NATâ"âššâ²ç!ç"ã€,

·â•ÿç" â€"

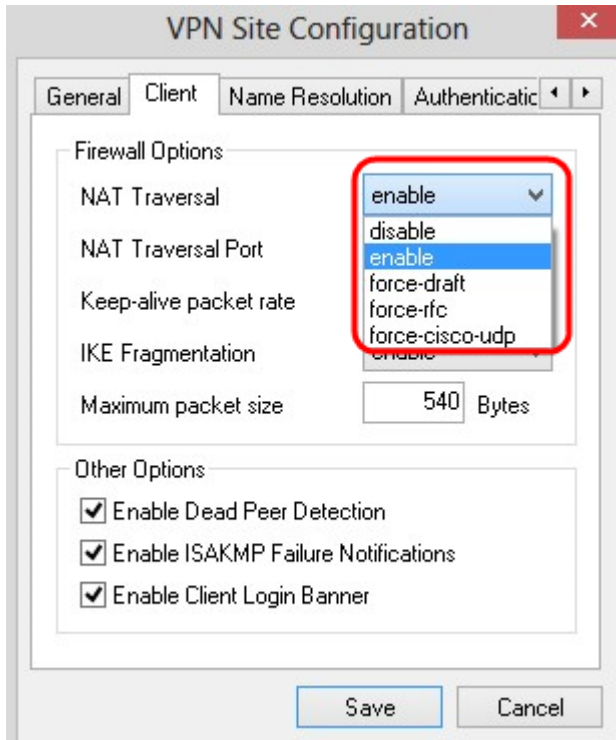
âf...ç•ççé—œé€šéŽâ"â•tæÇççºæ"æ'æ™,æ%öä½ç"IKEâ^tæ®µã€,

·â¼â^çè%ç" ç â€"

NATâ"âššçš,,è%ç"çç%âæœ-ã€,â!,æžœçç²é—œé€šéŽâ"â•tæ^-æªÇæ,-NATâ¾tæÇççºæ"

·â¼â^çRFC -

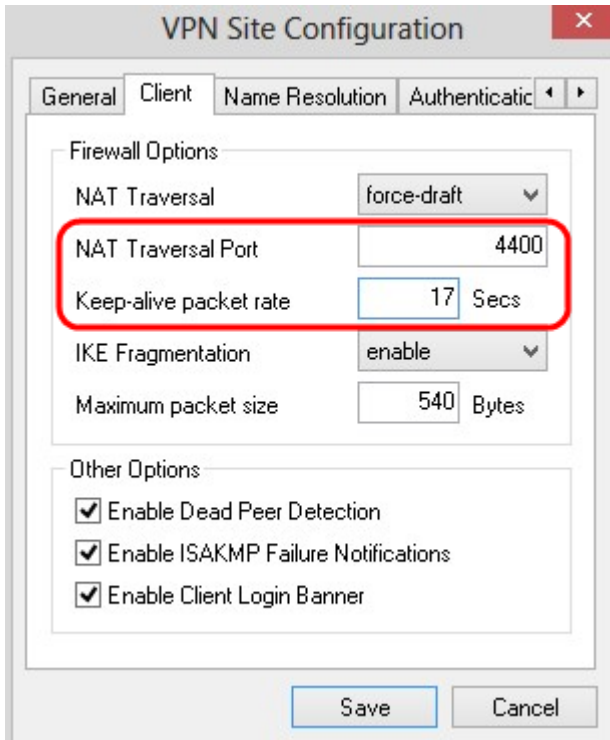
NATâ"âššçš,,RFCç%âæœ-ã€,â!,æžœçç²é—œé€šéŽâ"â•tæ^-æªÇæ,-NATâ¾tæÇççºæ"



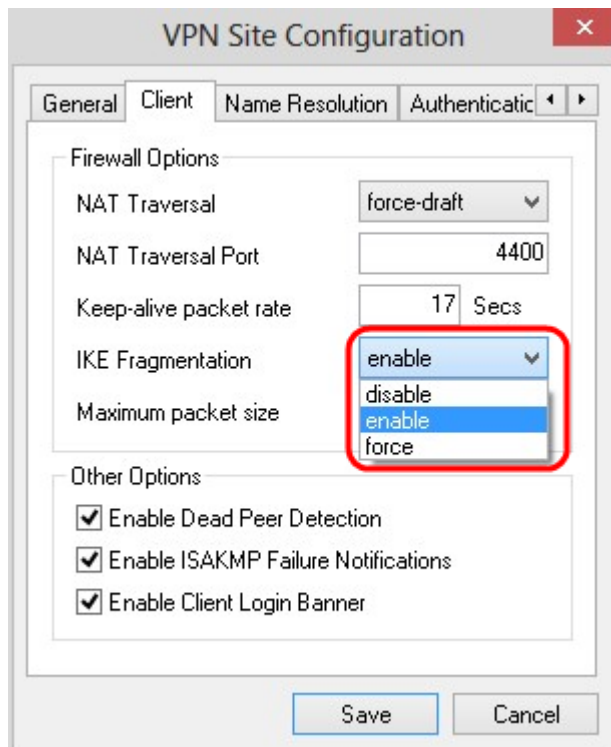
æŸé©ÿ3.âœ" NAT Traversal Portæ¬,,â½ä,è¼,â...ŸNATçš,,UDPâŸã€,é è"â¼ç,º 4500ã€,

æŸé©ÿ4.âœ"ã€ÇKeep-alive packet

rateã€æ¬,,â½ä,è¼,â...Ÿâ,³é€äçæÇé€ççšâ"âÇ...çš,,éŸçž†â¼ã€,è²â¼ä»Ÿçšç



æŸé©Ÿ5.âœ“IKE Fragmentationä, æ<%œ, ...â-@ä, i¼Œé, æ“†é, ©ç•Ÿçš,, é, é ...ã€,
 ç!ç”” â€” ä, ä½ç”” IKEâ^†æ@µã€,
 â•Ÿç”” â€”
 âf...ç•Ÿç””é—œé€šéŽâ””â†æŒçœ”æ”æ’æ™, æ%œ ä½ç”” IKEâ^†æ@µã€,
 â¼â”” â€” ç,, è«-æŒçœ”æ^-æªœ, -â!, ä½•i¼Œéf½ä½ç”” IKEâ^†æ@µã€,

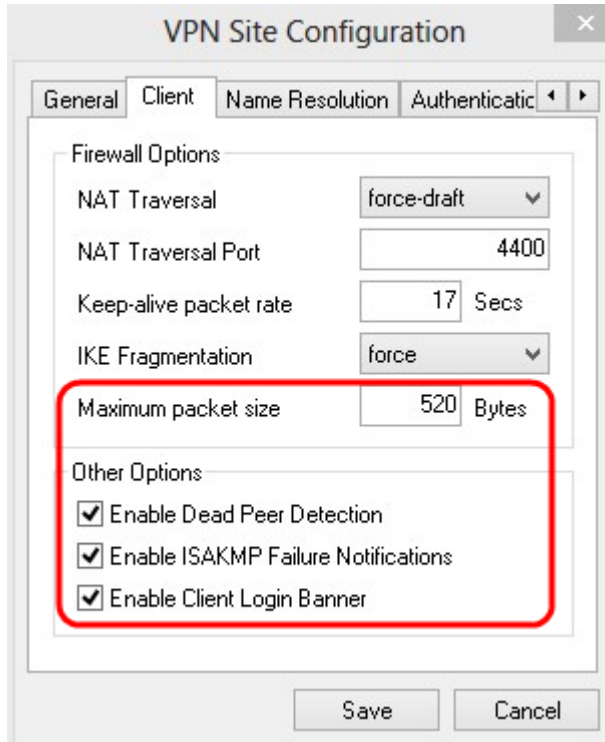


æŸé©Ÿ6.âœ“Maximum packet sizeæ¬, ä½ä, i¼^â»Ÿä½ä...fçµ,, ç, °â-@ä½ä, i¼%œè¼, â...Ÿæœ€âµšè³†æ-™âŒ...âµšâ° ä€, â!, æžœ

Step 7: In the **Client** tab, under **Firewall Options**, set **NAT Traversal** to **force-draft**, **NAT Traversal Port** to **4400**, **Keep-alive packet rate** to **17** Secs, and **IKE Fragmentation** to **force**. Under **Other Options**, check **Enable Dead Peer Detection**, **Enable ISAKMP Failure Notifications**, and **Enable Client Login Banner**.

Step 8: In the **Client** tab, under **Other Options**, check **Enable Dead Peer Detection**, **Enable ISAKMP Failure Notifications**, and **Enable Client Login Banner**.

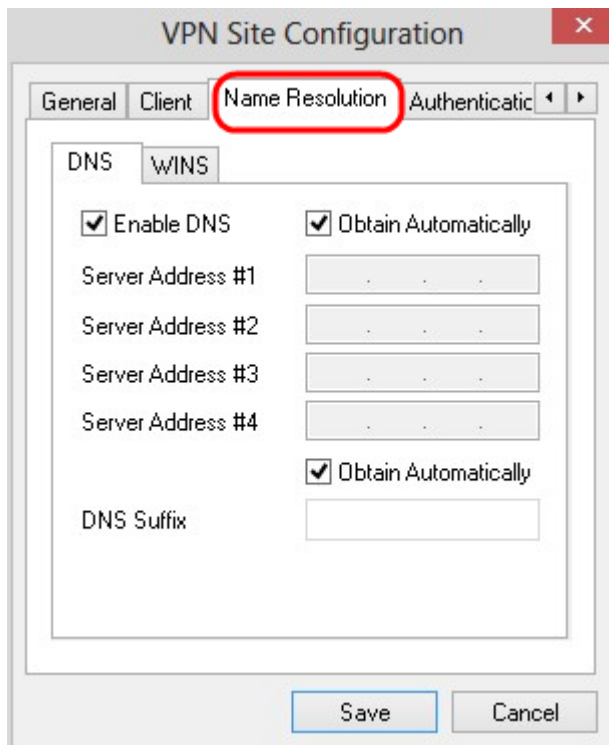
Step 9: In the **Client** tab, under **Other Options**, check **Enable Dead Peer Detection**, **Enable ISAKMP Failure Notifications**, and **Enable Client Login Banner**.



Step 10: Click **Save**.

Step 11: In the **Name Resolution** tab, set **Name Resolution** to **Force**.

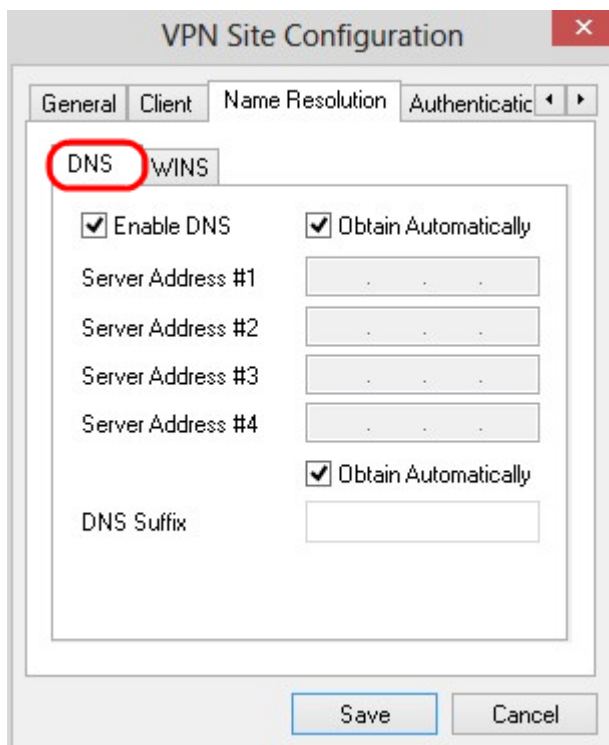
Step 12: In the **Name Resolution** tab, set **Name Resolution** to **Force**.



æ³æ,, ð ï¼š Name

Resolution é f'â^†ç'''æ-¼é... ç½@DNS ï¼^âÿÿâ ç³»çµ±ï¼%â'CEWIN ï¼^Windows Internetâ ç''±æœ ð â™ï¼%è''â@šã€,

æ¥é©ÿ2.æCE%öä, €ä, <DNSé ð, é ...â ð jã€,

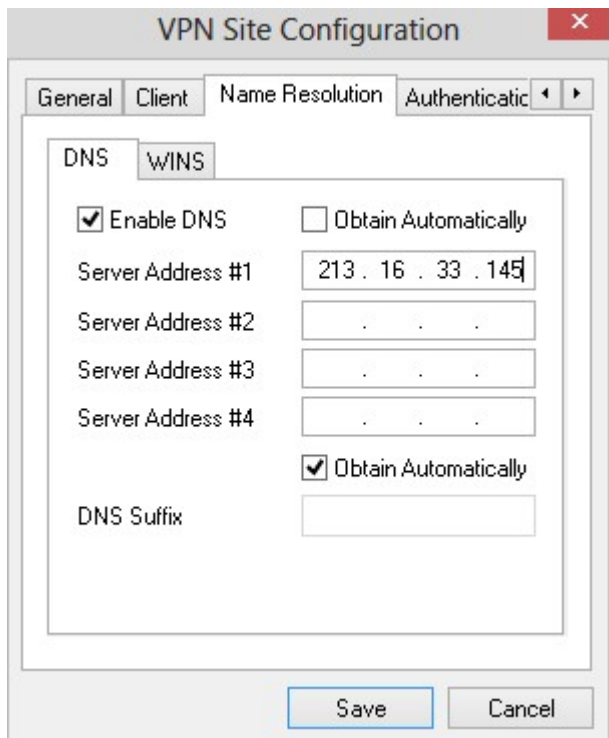


æ¥é©ÿ3.é ð, ä, Enable DNS ä»¥â•ÿç'''âÿÿâ ç³»çµ±(DNS)ã€,

æ¥é©ÿ4.ï¼^â ð é ð, ï¼%è<¥è | ð è†â<â ð -â¾—DNSä¼°æœ ð â™'' ä½ ð â ð €ï¼CEè«â<¾é ð, Obtain Automatically è'â ð -æ-¹jšã€â, ð, æžœé ð, æ''†æ¤é ð, é ...ï¼CEè«è³è†³æ¥é©ÿ6ã€,

5. Server Address

1. Enable DNS



2. Obtain Automatically

3. Save

4. Save

9. WINS

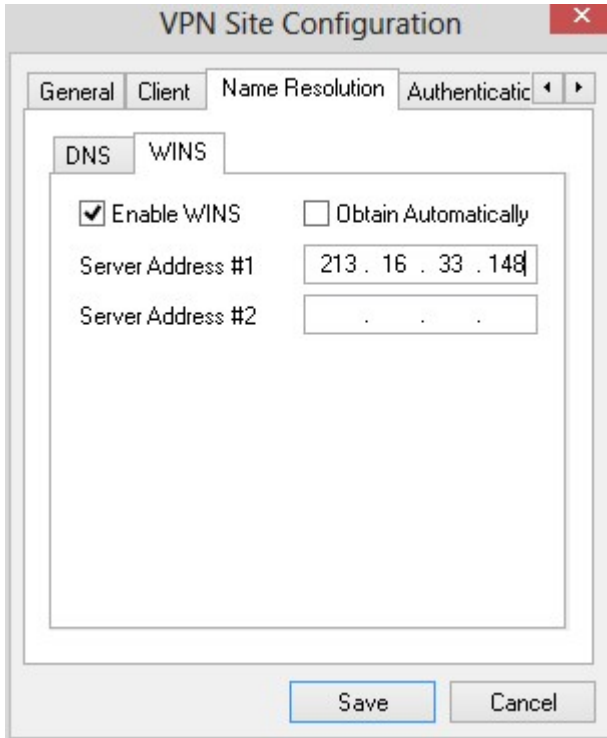


Step 10: Enable WINS

Step 11: Obtain Automatically

Step 12: Server Address

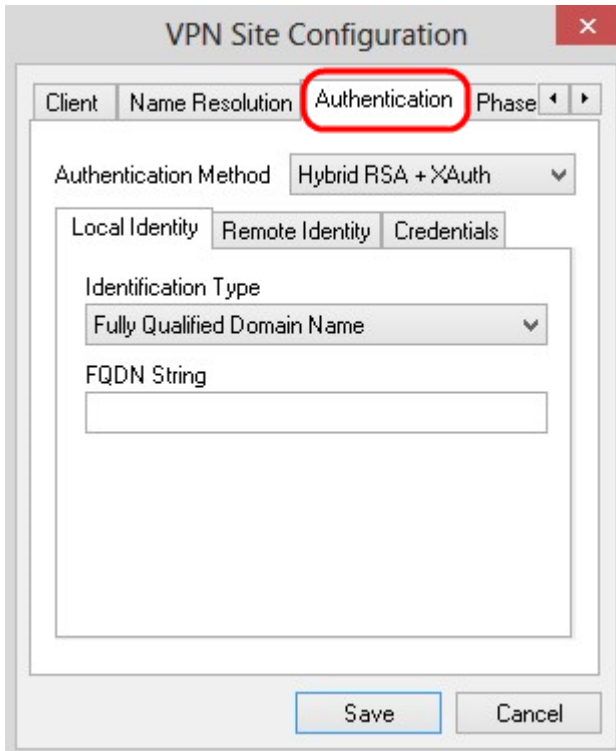
Server Address #1: 213.16.33.148



Step 13: Save

Step 14: Authentication

Step 15: Authentication



è»i¼säœ Authenticationéf"â^†i¼œæ,,â ¢ ¨ä»¥é... ¢ç½@â@œæ^¶ç« ¯çš,,â¼•æ•j¼œä½¿â...¶âœ ¨ â SAæ™,è™•ç ¢ tè°«ä»½é©—è%œã€,

æ¥é©ÿ2.â¾žAuthentication

Methodä,æ<%œ ¢ ¢,â-@ä,é ¢,æ"†é ¢ ©ç•¶çš,,è°«ä»½é©—è%œæ-¹æ³•ã€,

·æ·â ¢ ^RSA +æ"â±•é©—è%œ â€"

ä, ¢ éœ€è | ¢ â@œæ^¶ç« ¯æ†æ"šã€,ä½¿ç"" è€...ç« ¯æœfé©—è%œé~é ¢ "ã€,æ†æ"šâ°†æžjç"" PEM

·æ·â ¢ ^GRP +æ"â±•é©—è%œ â€"

ä, ¢ éœ€è | ¢ â@œæ^¶ç« ¯æ†æ"šã€,ä½¿ç"" è€...ç« ¯æœfé©—è%œé~é ¢ "ã€,æ†è%œâ°†æžjç"" PEM

·é,™æ-¹RSA +æ"â±•é©—è%œ â€"

â@œæ^¶ç« ¯â'œç¶é—œéf½éœ€è ¢ æ†è%œé²èjœè°«ä»½é©—è%œã€,æ†è%œâ°†æžjç"" PEMæ^—PKC

·é,™æ-¹PSK +æ"â±•é©—è%œ â€"

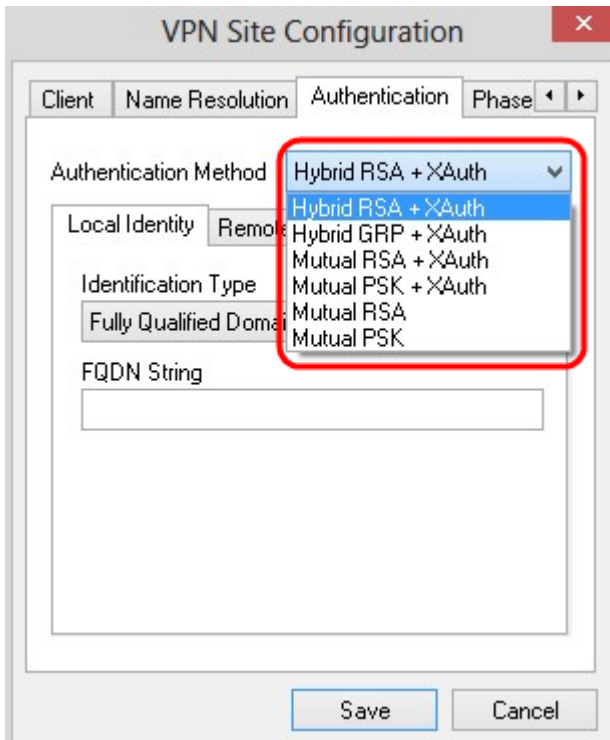
â@œæ^¶ç« ¯â'œç¶é—œéf½éœ€è ¢ æ†è%œé²èjœè°«ä»½é©—è%œã€,æ†æ"šâ°†æžjç"" â...±ç"" é†é°

·é,™æ-¹RSA â€"

â@œæ^¶ç« ¯â'œç¶é—œéf½éœ€è ¢ æ†è%œé²èjœè°«ä»½é©—è%œã€,æ†è%œâ°†æžjç"" PEMæ^—PKC

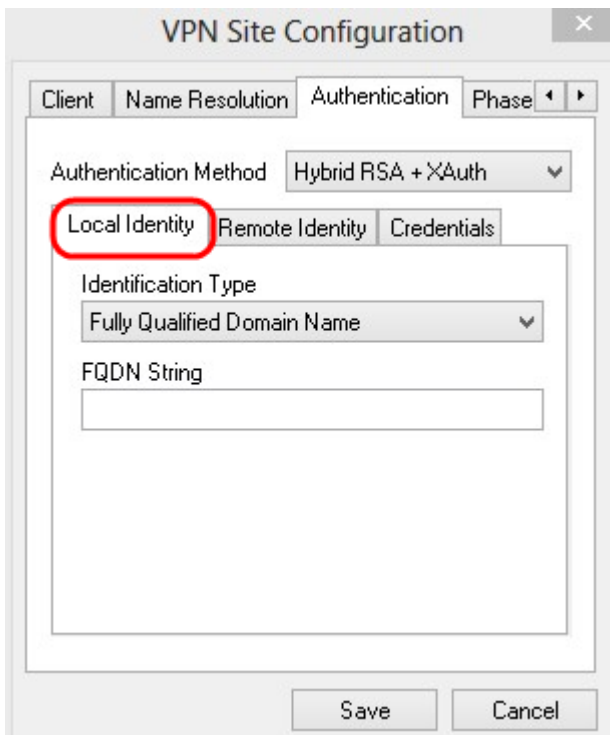
·é,™â ¢ PSK â€"

â@œæ^¶ç« ¯â'œç¶é—œéf½éœ€è | ¢ æ†è%œé²èjœè°«ä»½é©—è%œã€,æ†æ"šâ°†æžjç"" â...±ç""



æœ¬åœ°è°«ä»½é... ½®

æ¥é©Ÿ1.æœ%öä,€ä, **Local Identity** ½±ã€



æ³•æ,, ¼šæœ¬åœ°è°«ä»½è°«@šä,³éœ°â°ç¶²é—œé€²è;œé©—è%çš,,IDã€,åœ° *Local*

*Identity*éƒâ^†ä,¼œé... ½®æ™è~âž<â^¥â’œFQDN¼^â@œâ...™é™â@šäŸŸâ¼¼%â—ä,²â¥

æ¥é©Ÿ2.¾¼ž *Identification*

*Type*ä, <æ<%é,â-®ä,é,æ“†ç,æ†%çš,,æ™è~é,é ...ã€,ä,|éžæ%œæœ%é,é ...â°æ%œæœ

·â@CEâ...“é™â@šáÿÿâ â€”

æœ-âœ°æ”™ë~çš,,â@çæ^¶ç«-æ”™è~âÿ°æ-¼â@CEâ... “é™â@šáÿÿââ€,,á!,æžœé,,æ“†æœ

·â½ç”“è€...â@CEâ...“é™â@šáÿÿâ â€”

æœ-âœ°è°«â»½çš,,â@çæ^¶ç«-æ”™è~âÿ°æ-¼â½ç””è€...â@CEâ...“é™â@šáÿÿââ€,,á!,æžœ

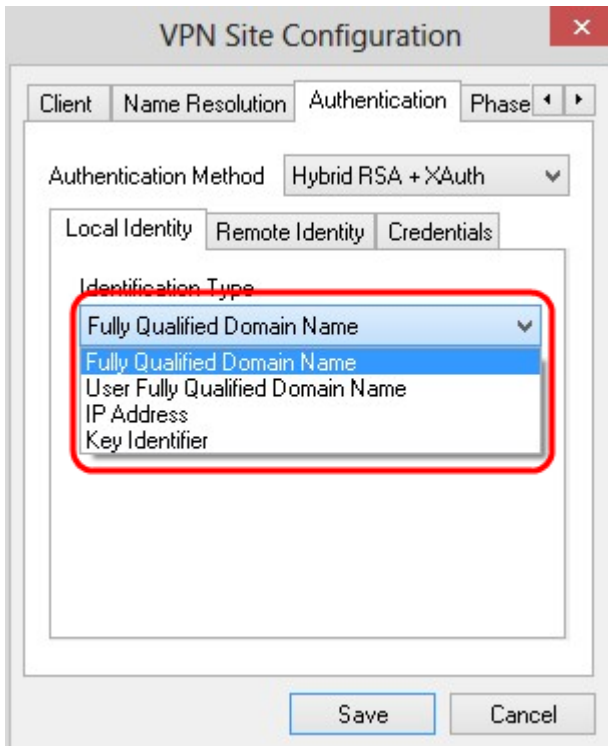
·IPâœ°â â€”

æœ-âœ°è°«â»½çš,,â@çæ^¶ç«-æ”™è~âÿ°æ-¼IPâœ°â â€€â€,á!,æžœé,,ä,Use a **discovered local host**

address¼CEâ°‡è‡â°ç™¼ç‡¼IPâœ°â â€€â€,á!,æžœé,,æ“†æœé,,é ...¼CEè«âÿ·è;CEæ¥é©ÿ5¼

·é‡‘é°è~âÿç-¼è™ÿ â€”

âÿ°æ-¼é‡‘é°è~âÿç-¼è™ÿæ”™è~æœ-âœ°â@çæ^¶ç«-çš,,â@çæ^¶ç«-è~âÿç-¼è™ÿâ€,á!,æžœé,,æ“†æœé



æ¥é©ÿ3.âœ”FQDN

Stringæ¬,,â½â,è¼,â...¥â@CEâ... “é™â@šçš,,âÿÿââ½œç,°DNSâ—â,²â€,

æ¥é©ÿ4.âœ”UFQDN

String¼^UFQDNâ—â,²¼%œ¬,,â½â,è¼,â...¥â½ç””è€...â@CEâ...“é™â@šçš,,âÿÿââ(DNSâ—â,²)

æ¥é©ÿ5.âœ”UFQDNâ—â,²æ¬,,â½â,è¼,â...¥IPâœ°â â€€â€,

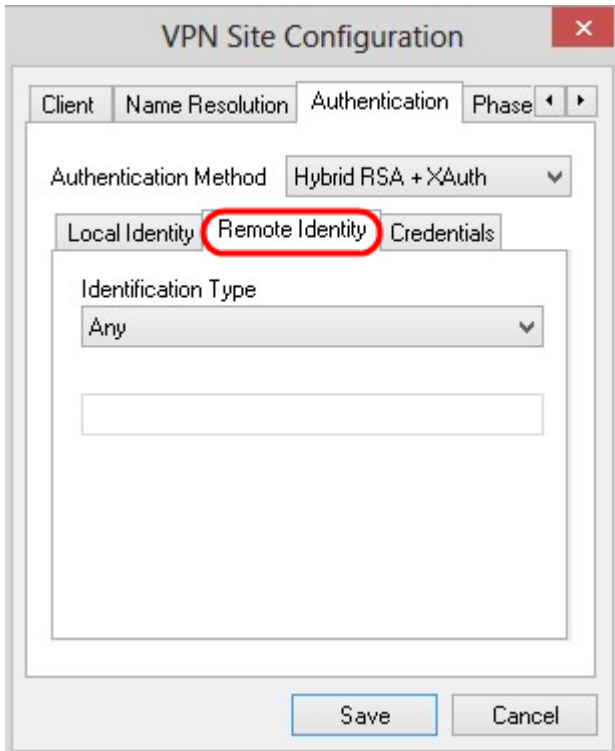
æ¥é©ÿ6.âœ”Key ID

String¼^é‡‘é°IDâ—â,²¼%â,è¼,â...ÿç”æ-¼æ”™è~æœ-âœ°â@çæ^¶ç«-çš,,é‡‘é°è~âÿç-¼è™ÿâ€,

æ¥é©ÿ7.æCE%â,€ä,çâ€Saveâ»¥â,,²âè~â@šâ€,

é ç«-è°«â»½é... ç½®

æ¥é©ÿ1.æCE%â,€ä, Remote Identity é ç±ã€,



æ³æ,, i¼š ç « è«ä»½â¾žç¶²é—œé©—è%IDã€‚âœ Remote Identityéƒâ†ä,i¼œâ°‡æ™è~ž&â¥é... ç½®ç,°çç°â®šIDçš,,é©—è%æ-¹¼ã€‚

æ¥é©ÿ2.â¾žIdentification Typeä, <æ<%œ ç,â-®ä,é ç,æ“†ç,æ†%çš,,æ™è~é ç,é ...ã€‚

· Any â€”

é ç «-â®çæ^¶ç«-â ç-ä»¥æž¥â ç-ä»»â½•â€¼æ^-IDé€²è;CEè«ä»½é©—è%ã€‚

· ASN.1â ç-â^†è¾”â ç ç ± â€”

â¾žPEMæ^-PKCS12è%æ>,æ”æ;è†â•œæ™è~é ç «-â®çæ^¶ç«-ã€‚â çæœ%âœ Authentication the subject in the received certificate but don't compare it with a specific valueèâ ç-æ-¹¼šâ»¥è†â•œæž¥æ”¶è%æ>,ã€‚â!,æžœé ç,æ“†æœé ç,é ...i¼œè«âÿ·è;CEæ¥é©ÿ3i¼œç

·â®œâ...é™â®šâÿÿâ ç ç â€”

é ç «-æ™è~çš,,â®çæ^¶ç«-æ™è~âÿ°æ-¼â®œâ... é™â®šâÿÿâ ç çã€‚â çæœ%âœ Authentication

·â½ç”è€...â®œâ...é™â®šâÿÿâ ç ç â€”

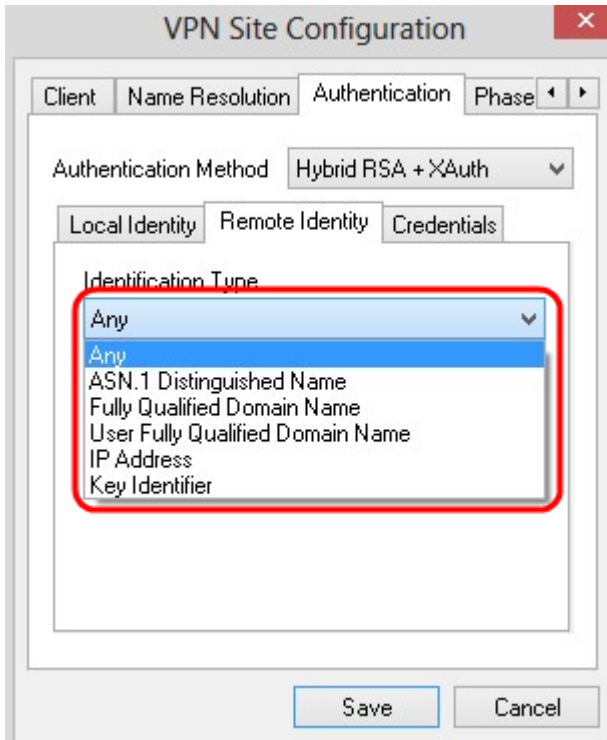
é ç «-è«ä»½çš,,â®çæ^¶ç«-æ™è~âÿ°æ-¼â½ç” è€...â®œâ... é™â®šâÿÿâ ç çã€‚â çæœ%

· IPæ°â ç ç â€”

é ç «-è«ä»½çš,,â®çæ^¶ç«-æ™è~âÿ°æ-¼IPæ°â ç çã€‚â!,æžœé ç,ä, Use a discovered local host addressi¼œâ°‡è†â•œç™¼ç ç¾¼IPæ°â ç çã€‚â!,æžœé ç,æ“†æœé ç,é ...i¼œè«âÿ·è;CEæ¥é©ÿ6i¼œç

·è†‘é°è~â¥ç-è™ÿ â€”

âÿ°æ-¼éè†‘é°è~â¥ç-è™ÿ¾¼†æ™è~é ç «-â®çæ^¶ç«-çš,,â®çæ^¶ç«-è~â¥ç-è™ÿã€‚â!,æžœé ç



3. ASN.1 DN – a string of characters representing an ASN.1 DN

4. FQDN

String representing a Fully Qualified Domain Name (FQDN) in the format: `hostname@domain.com`

5. UFQDN – a string of characters representing a User Fully Qualified Domain Name (UFQDN) in the format: `username@domain.com`

6. UFQDN String – a string of characters representing a User Fully Qualified Domain Name (UFQDN) in the format: `username@domain.com`

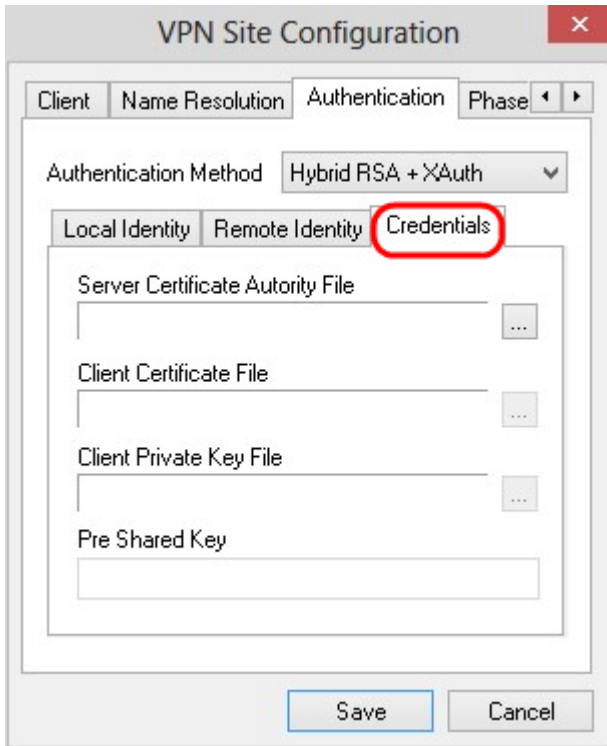
7. Key ID

String representing a Key Identifier (Key ID) in the format: `keyid@domain.com`

8. Save – a button to save the configuration

9. Save

1. Credentials – a button to configure credentials



æ³·æ,, ♦i¼šâœ`Credentialsé`â`i¼œé... ♦ç½®é ♦â...±ç` é†'é'ã€,



æ¥é©ÿ2.è! ♦é♦, æ`†ã¼°æœ ♦â™™` è%œæ, æ"æj`i¼œè«æœ%œä, €ä, <... âœ-çœ°æ— ♦é, Šçš,, Server Certificate Authority

Fileæ¬,, ä½♦i¼œä, |é♦, æ`†æ, `âœ` PCä, Šä,, ²â~ã¼°æœ ♦â™™` è%œæ, æ"æj`çš,, è·`â¾'ã€,

æ¥é©ÿ3.è! ♦é♦, æ`†â®çæ^¶ç«` è%œæ, æ"æj`i¼œè«æœ%œä, €ä, <... âœ-çœ°æ— ♦é, Šçš,, Client Certificate

Fileæ¬,, ä½♦i¼œä, |é♦, æ`†æ, `âœ` PCä, Šä,, ²â~â®çæ^¶ç«` è%œæ, æ"æj`çš,, è·`â¾'ã€,

æŸé©Ÿ4. èl é, æ"†å@çæ^Ÿç«çš é°æ"æjî¼Eè«å-@æ"Šâ€lâ€âœ-çœ°¼Eä, lé, æ"†æ, " åœ" P

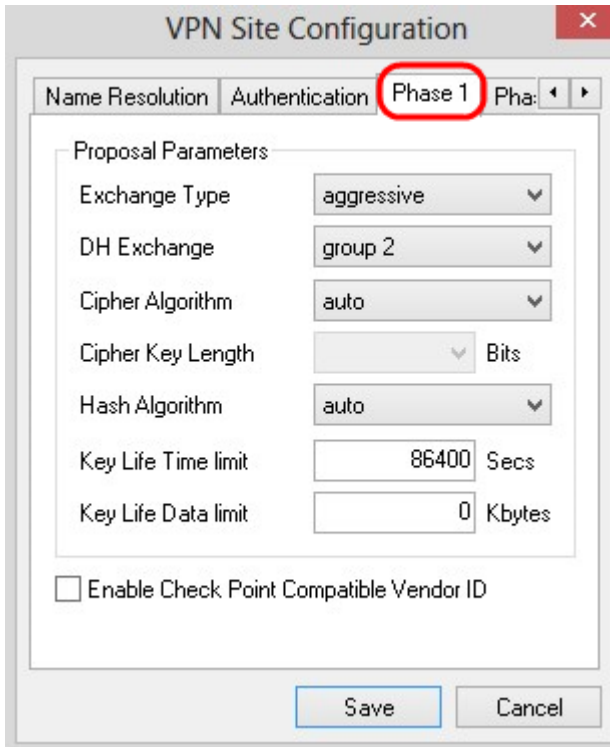
æŸé©Ÿ5. åœ" PreShared

Keyæ¬, ä½ ä, å¼, å... Ÿé ä... ±ç" é†'é°ã€æœæ†'é°æ†%œè^†é... ç½®éššé æ™, ä½ç" çš, é†'é°ç

æŸé©Ÿ6. æE%œä, €ä, <ã€ Saveã€ ä»¥å,, ²ã è" å®šã€,

ç¬1éšŽæ®... ç½®

æŸé©Ÿ1. æE%œä, €ä, Phase 1 é ç±œã€,



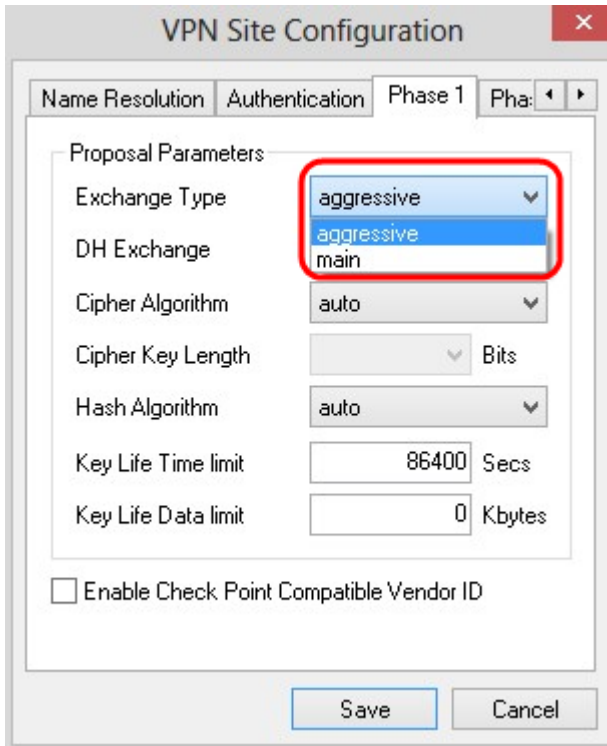
æ³æ,, é¼šåœ" Phase

Íé†'å†¼Eæ, "å æŸé... ç½®å¼æ, î¼Eä»¥ã¼å ä æŸé»ç«å, Ÿæœ%œå@çæ^Ÿç«çŸ²éœçš SAã€,

æŸé©Ÿ2. ä¼Exchange Type, <æ%œé, å-®ä, é, æ"†é ççŸçš, é†'é°äœæ > äžã ¥ã€,

ä, »èl â€" å° ç%œé" çš, è°«ä»½å æŸéèèã€,

æ"»æ"Šæ€§ â€" å ç%œé" çš, è°«ä»½æ²æœ%œäç éšœã€,



3. DH

Exchange Type: aggressive

4. Cipher

Algorithm: aggressive

5. Cipher Key

Length: 86400

6. Hash

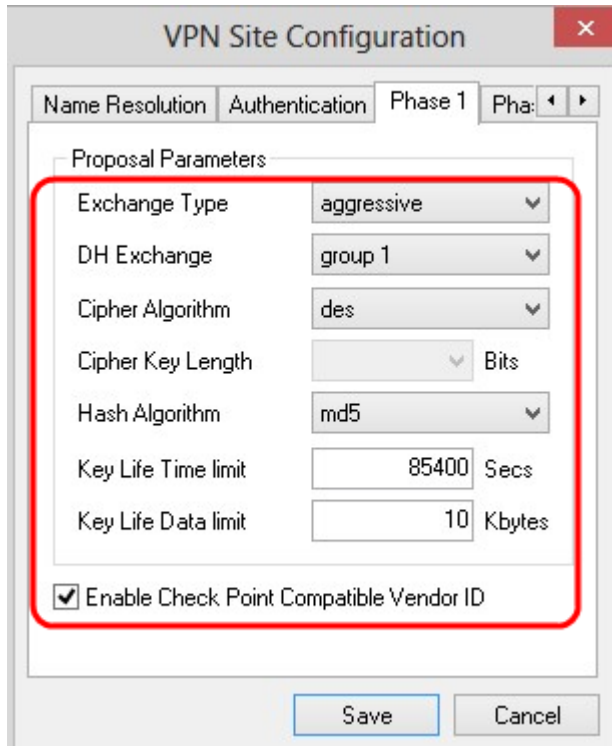
Algorithm: auto

7. Key Life Time

limit: 86400

Key Life Data limit: 0

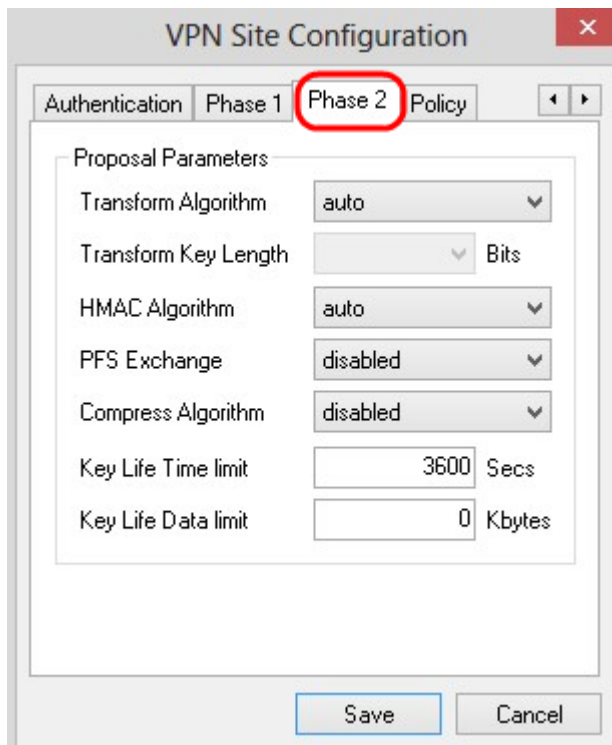
Enable Check Point Compatible Vendor ID



æŸé©Ÿ10.æŒ%öä, €ä, <ã€ŒSaveã€Œä»Ÿå,,²ã~è¨ãšã€,

ç¬†→2ésŽæ®á...ç½®

æŸé©Ÿ1.æŒ%öä, €ä, **Phase 2é** ç±ªã€,



æ³•æ,,ç½šãœ¨Phase

2éf¨â^†i¼ŒEãç¨»Ÿé...ç½®@ã¼•æ•,i¼ŒEä»Ÿã¾¿ãç¨»Ÿã»°ç««ã...æœ%öé ç«¨ã@çæ^Ÿç«¨çŸ²é—SAã€,

Step 2: Transform

Algorithm, Transform Algorithm, Transform Key Length, HMAC Algorithm, PFS Exchange, Compress Algorithm, Key Life Time limit, Key Life Data limit

Step 3: Transform Key

Length, Transform Key Length

Step 4: HMAC

Algorithm, HMAC Algorithm

Step 5: PFS

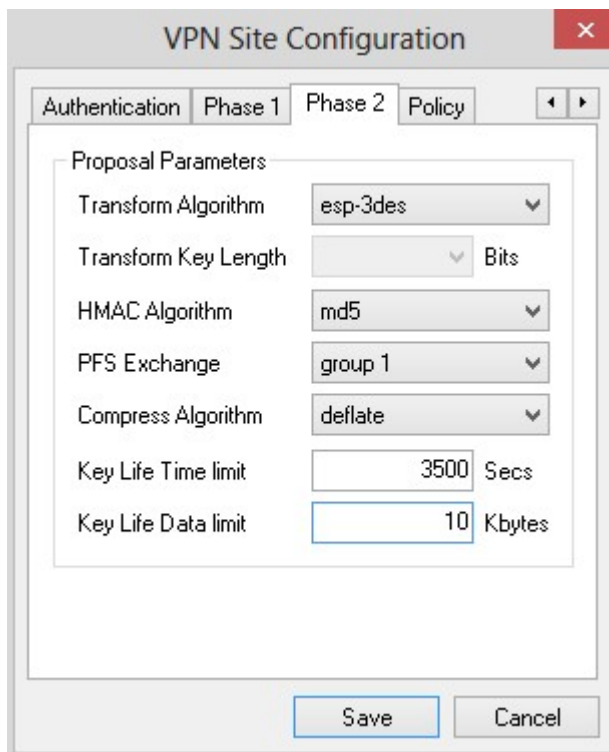
Exchange, PFS Exchange

Step 6: Key Life Time

Limit, Key Life Time limit

Step 7: Key Life Data

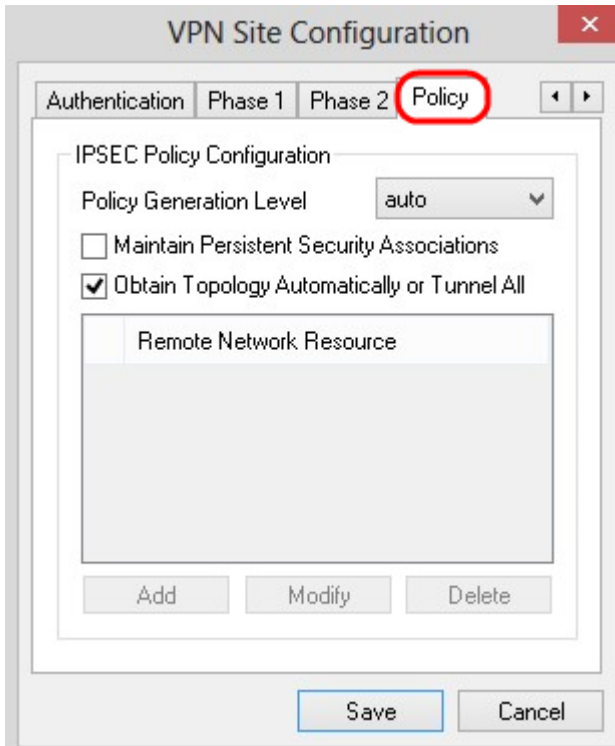
Limit, Key Life Data limit



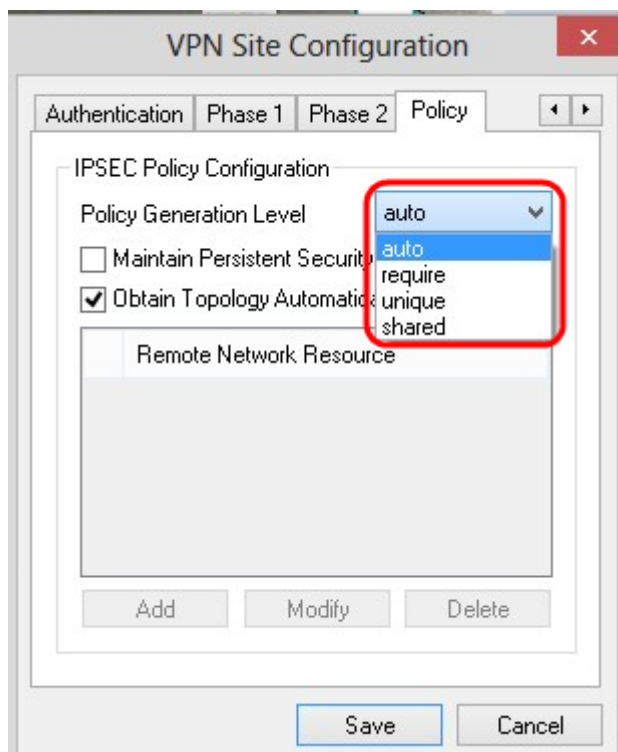
Step 8: Save

Step 9: Policy

Step 10: Policy



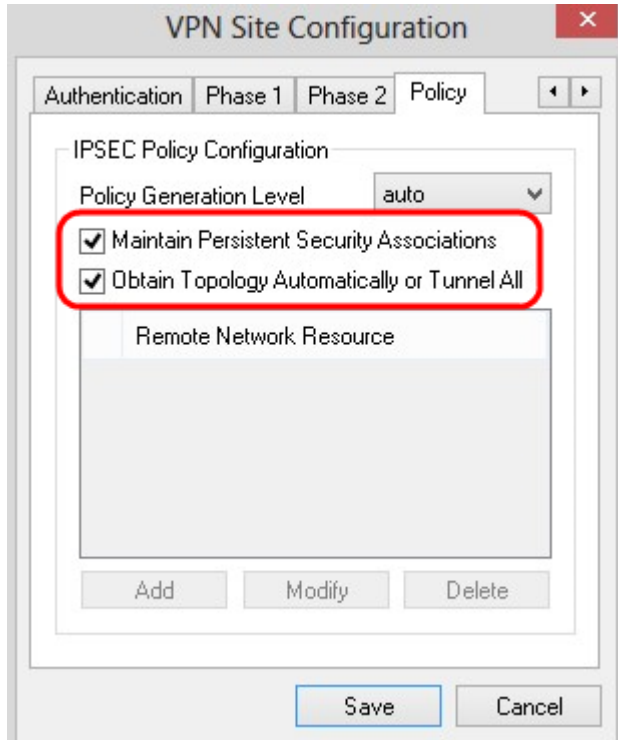
æ³·æ,, ♦i¼šâæ· Policyé f· á^†ä, á@šç¾©ä°†IPSECç-ç·Yi¼Œé€™æ~å@çæ^¶ç«-è^†ä, »æ©ÿé€²è;Œç«™é»»
 æYé©ÿ2.âæ· Policy Generation Levelä, <æ<%oé♦, ä-@ä, i¼Œéé♦, æ"†é♦©ç·¶çš,, é♦, é ...ãé,
 ·è†ªâ< â€" è†ªâ<ççªâ@šâ;...è♦çš,, IPsecç-ç·Yç'šâ^Yãé,
 ·è♦æ±, â€" ä, ♦ææefâ♦"á·tæ-♦â€ç-ç·Yçš,, á"-ä, €â@%oã... "é—œè♦-ãé,
 ·á"-ä, € â€" ♦"á·tæ-♦â€ç-ç·Yçš,, á"-ä, €â@%oã... "é—œè♦-ãé,
 ·â...±ç"" â€" âæ"â;...è♦ç'šâ^Yç"Yæ^é♦©ç·¶çš,, ç-ç·Yãé,



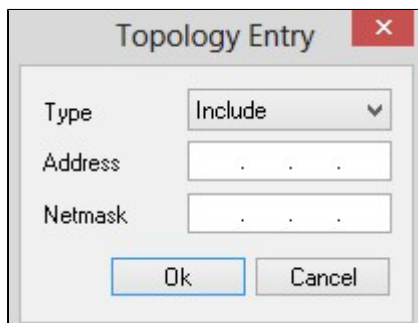
3. **Maintain Persistent Security Associations**

4. **Topology Automatically or Tunnel All**

All



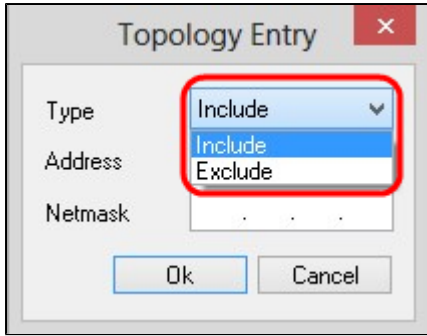
5. **Add** Topology Entry



6. **Type**

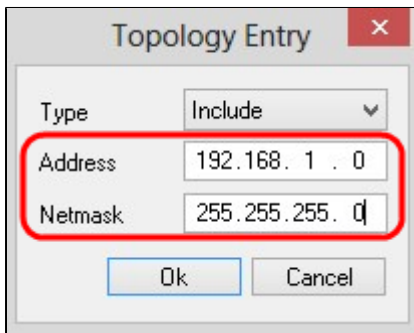
• **VPN**

• **TM**

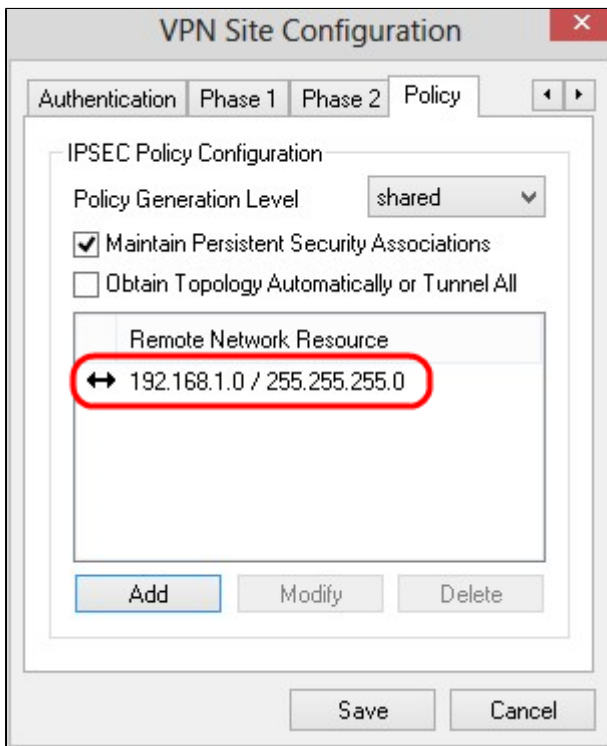


Step 7. Address

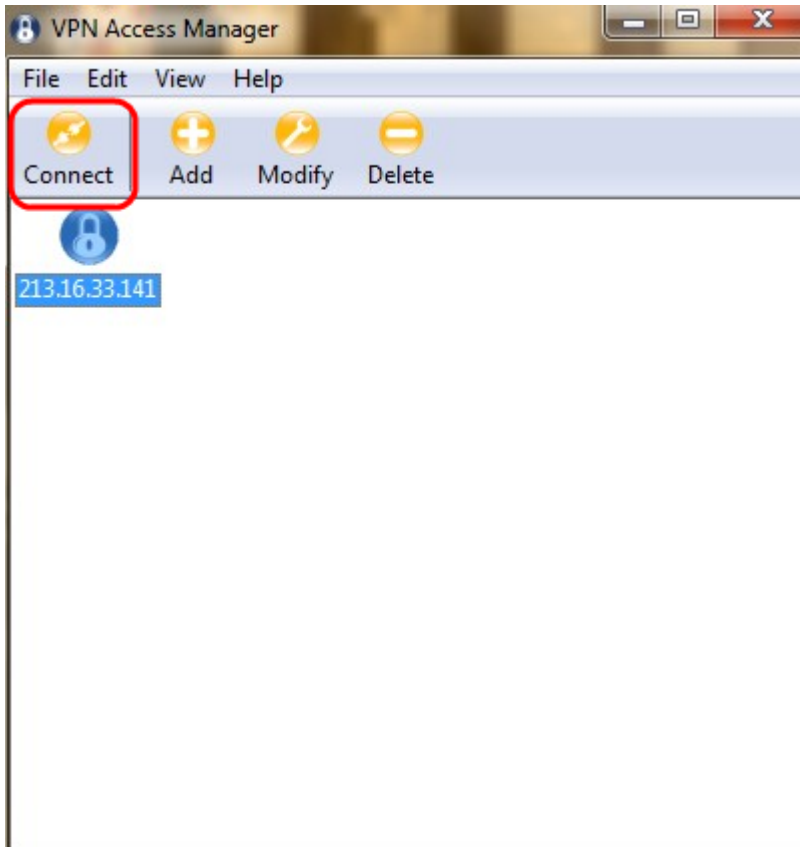
Step 8. Netmask



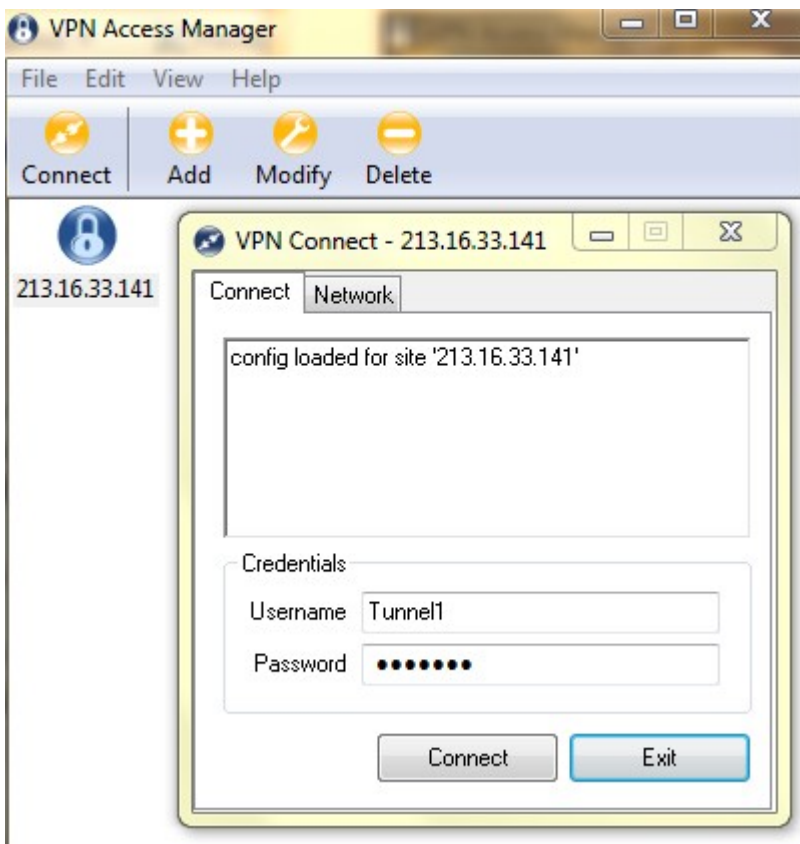
Step 9. Click **Ok** to save the network resource.



Step 10. Click **Save** to save the VPN configuration.



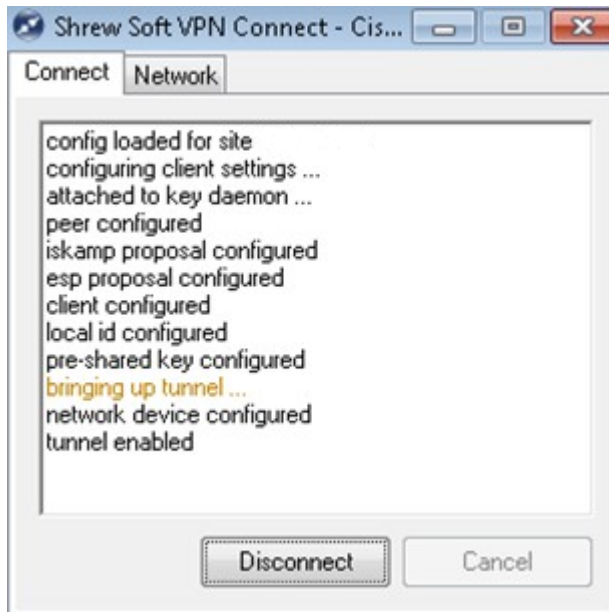
Clicking the **Connect** button.



The **Username** field is populated with 'Tunnel1'.

The **Password** field is masked with dots.

Shrew Soft VPN Connect



Disconnect

關於此翻譯

思科已使用電腦和人工技術翻譯本文件，讓全世界的使用者能夠以自己的語言理解支援內容。請注意，即使是最佳機器翻譯，也不如專業譯者翻譯的內容準確。Cisco Systems, Inc. 對這些翻譯的準確度概不負責，並建議一律查看原始英文文件（提供連結）。