

# 升级/降级特定思科RAID控制器上的防火墙后恢复VMware Datastore

## 目录

[相关的思科支持社区讨论](#)

## /RAIDVMWare Datastore

RAID(FW)VMWare Datastore

/

UCSC-C3160UCSC-C220-M4sUCSC-C220-M4LUCSC-C240-M4SUCSC-C240-M4SXUCSC-C240-M4S2UCSC-C240-M4LUCSC-C22-M3SUCSC-C22-M3LUCSC-C24-M3SUCSC-C24-M3S2UCSC-C24-M3LUCSC-C460-M4

UCS-RAID-9266-8iUCS-RAID-9266CV-8iUCS-RAID-9271-8iUCS-RAID-9271CV-8iUCS-RAID-9285CV-EUCS-RAID-9286CV-8EUCSC-MRAID-12GUCSC-MRAID12G-512UCSC-MRAID12G-1GBUCSC-MRAID12G-2GBUCSC-MRAID12G-4GBUCSC-SAS9300-8EUCSC-C3X60-R4GBUCSC-C3X60-HBAUCSC-C3X60-R1GB

2.0(4)2.0(3)(2.0(3)2.0(6f))

C220/C240 M39271CV-8i/9271-8iRaid

/ VMWare/VMWareVSpheDatastore





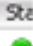
### Configuration Issues

No datastores have been configured  
 No coredump target has been configured. Host core dumps cannot be saved.

#### General

Manufacturer:	Cisco Systems Inc
Model:	UCSC-C220-M3S
CPU Cores:	16 CPUs x 1.999 GHz
Processor Type:	Intel(R) Xeon(R) CPU E5-2650 0 @ 2.00GHz
License:	VMware vSphere 5 Enterprise Plus - Licensed for 2 physic...
Processor Sockets:	2
Cores per Socket:	8
Logical Processors:	32
Hyperthreading:	Active
Number of NICs:	4
State:	Connected
Virtual Machines and Templates:	0
vMotion Enabled:	No
VMware EVC Mode:	Disabled
vSphere HA State:	N/A
Host Configured for FT:	No
Active Tasks:	
Host Profile:	
Image Profile:	ESXi-5.5.0-2068190-custom...
Profile Compliance:	N/A
DirectPath I/O:	Supported

#### Resources

CPU usage: <b>45 MHz</b>	Capacity
	16 x 1.999 GHz
Memory usage: <b>2410.00 MB</b>	Capacity
	98267.98 MB
Storage	Status Drive Type
	
Network	Type
 VM Network	Standard port group 

#### Fault Tolerance

Fault Tolerance Version:	5.0.0-5.0.0-5.0.0
	Refresh Virtual Machine Counts
Total Primary VMs:	--
Powered On Primary VMs:	--
Total Secondary VMs:	--
Powered On Secondary VMs:	--

/var/log/vmkernal.log

```
2015-09-30T19:15:55.813Z cpu22:33374)VM: 8389: Device naa.600605b006b497b0ff000020021141d1:3 detected to be a snapshot:
2015-09-30T19:15:55.840Z cpu22:33374)VM: 8396: queried disk ID: <type 2, len 22, lun 0, devType 0, scsi 0, h(id) 501754826480
8749311>
2015-09-30T19:15:55.840Z cpu22:33374)VM: 8403: on-disk disk ID: <type 2, len 22, lun 0, devType 0, scsi 0, h(id) 108724824995
87305860>
```

VMWare <http://kb.vmware.com/kb/1011387>

## vSphereWebUICLI

### ESXi 5.x vSphere

1. vSphere
2. """"

**The ESXi host does not have persistent storage.**

To run virtual machines, create at least one datastore for maintaining virtual machines and other system files.

Note: If you plan to use iSCSI or a network file system (NFS), ensure that your storage adapters and network connections are properly configured before continuing.

To add storage now, [click here to create a datastore...](#)

**Hardware**

- Processors
- Memory
- Storage
- Networking
- Storage Adapters
- Network Adapters
- Advanced Settings
- Power Management

**Software**

- Licensed Features
- Time Configuration
- DNS and Routing
- Authentication Services
- Power Management
- Virtual Machine Startup/Shutdown
- Virtual Machine Swapfile Location
- Security Profile
- Host Cache Configuration
- System Resource Allocation
- Agent VM Settings
- Advanced Settings

**View:** Datastores Devices

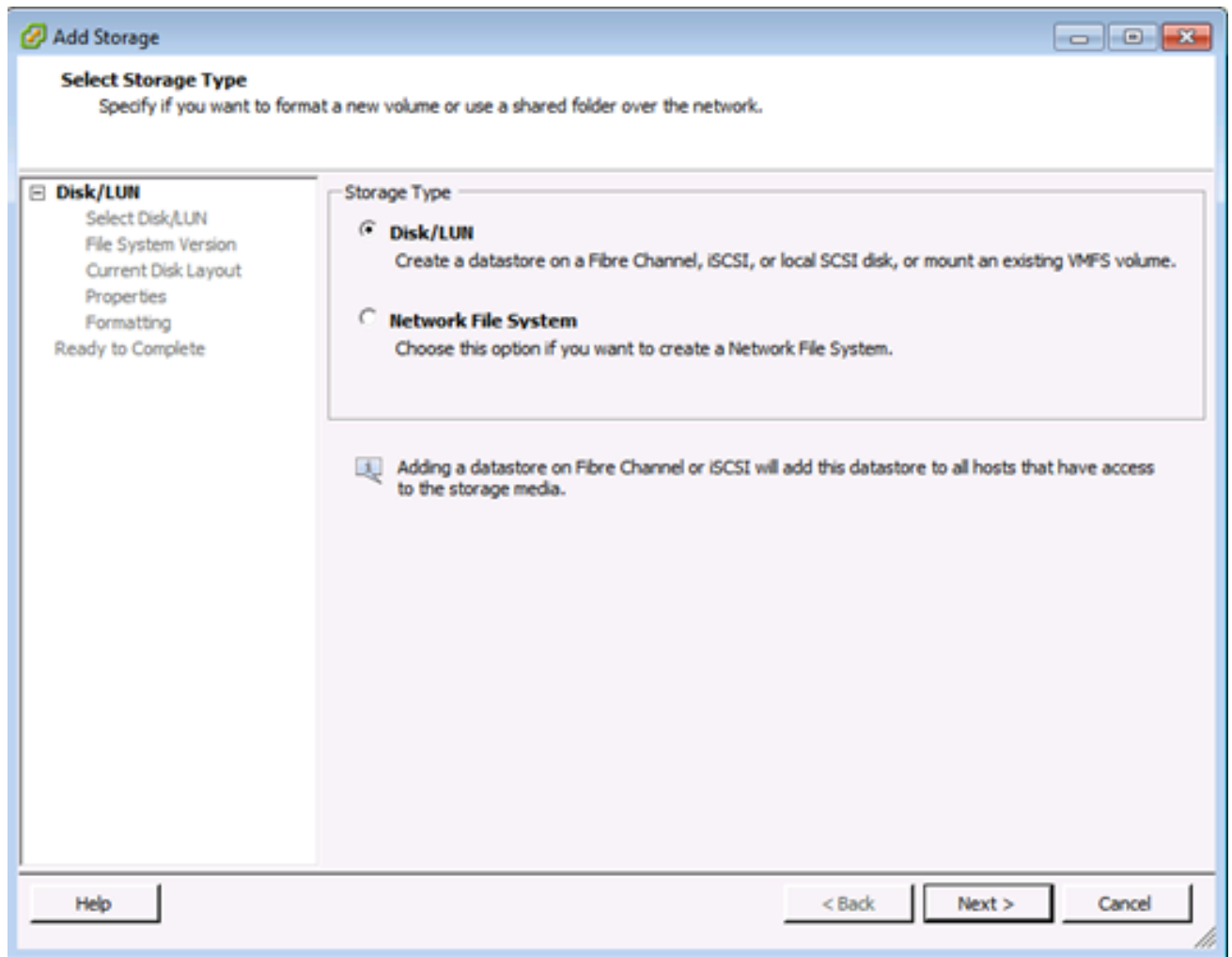
**Datastores**

Identification	Status	Device	Drive Type	Capacity	Free	Type	Last Update

**Datastore Details**

3.

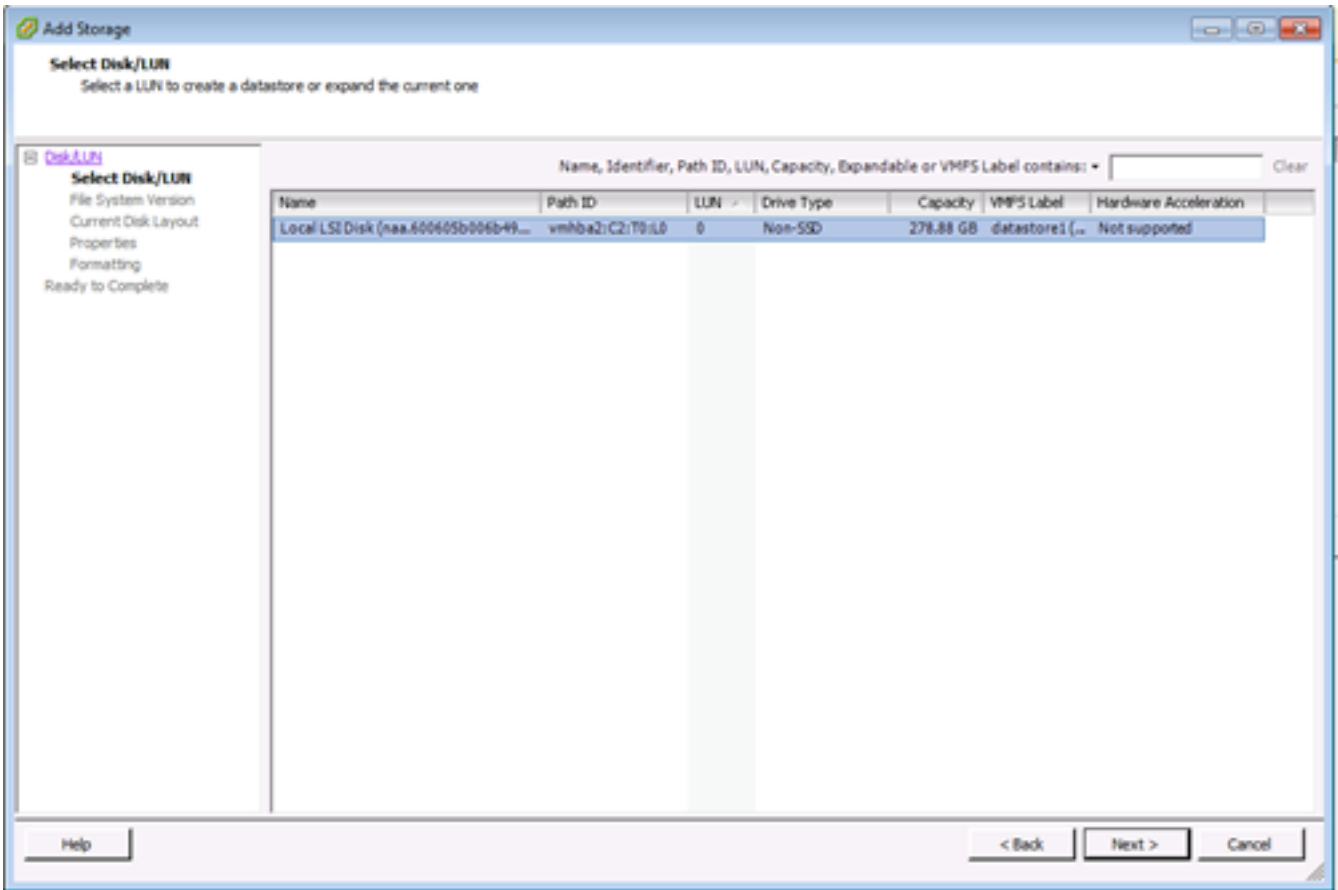
4. /LUN



5. **Next**

6. LUNVMFSdatastoreLUN

:VMFSLUNVMFS



## 7. Next

8.

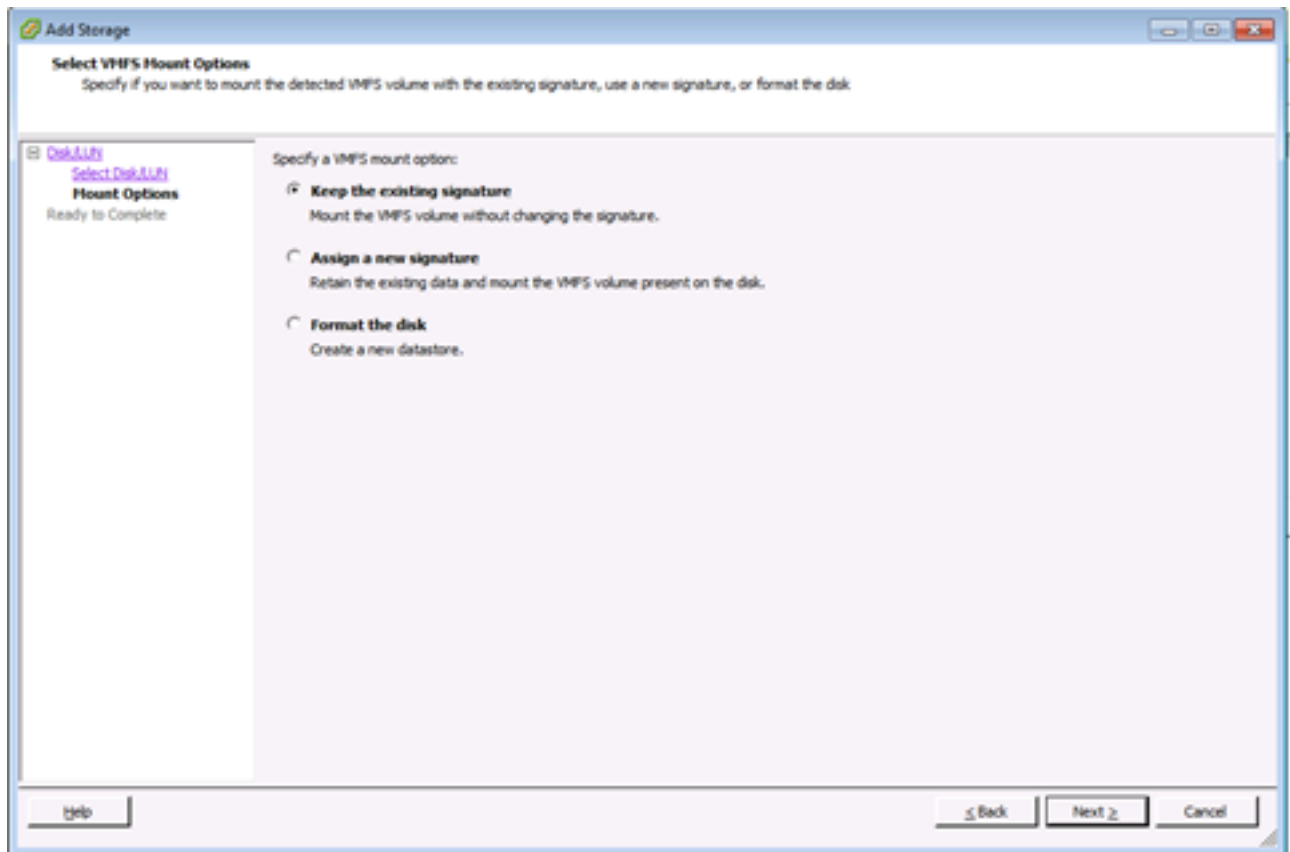
a. :LUNLUN

b. :LUN

c. :LUN

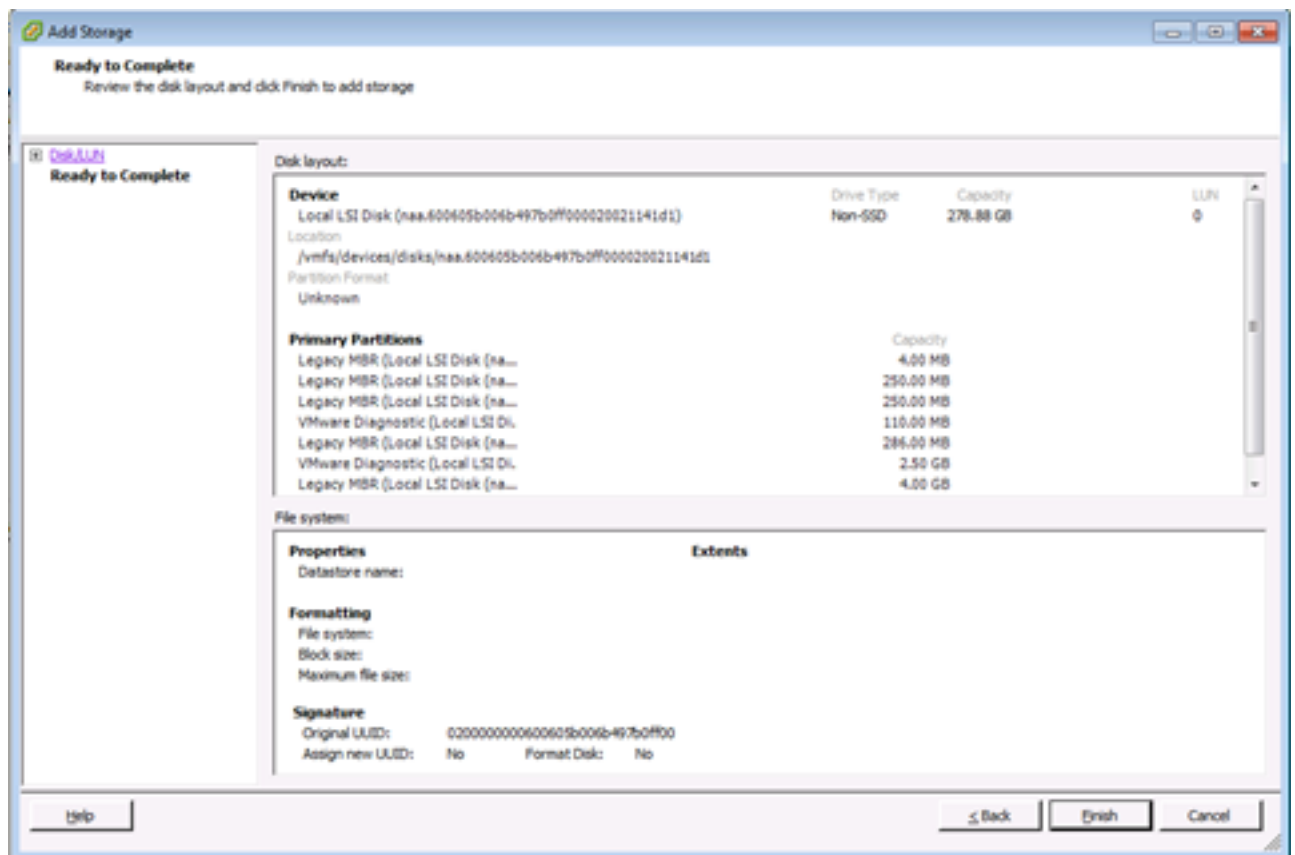
:

LUNVMFSvCenter Server



9.

10. ""(Ready to Complete)Datastore



11.