

# UCS B系列服务器：使用较旧的固件更换RAID控制器可能导致ESXi主机中的数据存储装载失败

## 目录

[问题陈述：](#)

[受影响的硬件：](#)

[带UCSB-MRAID12G RAID控制器的服务器：](#)

[受影响的固件：](#)

[受影响的操作系统：](#)

[原因：](#)

[如何防止出现问题？](#)

[如果服务器遇到此问题，如何恢复？](#)

[相关漏洞：CSCvr11972](#)

RAIDVDNAA IDDatastore

UCSB-MRAID12G

UCSC-MRAID12G

## UCSB-MRAID12G RAID

UCS B200 M4

UCS B200 M5  
UCS B480 M5  
UCS B420 M4

UCS C220 M4

UCS C240 M4

RAID 24.5.x.x24.6.x.x

### 示例#

\*\*\*mrsasctrl.24.5.0-0043\_6.19.05.0\_NA.bin

24.5.x.x控制器固件在3.2.\*之前的所有UCSM版本中都可见。\*

### 3.1 #版本说明

[https://www.cisco.com/c/en/us/td/docs/unified\\_computing/ucs/release/notes/CiscoUCSManag](https://www.cisco.com/c/en/us/td/docs/unified_computing/ucs/release/notes/CiscoUCSManag)





=====  
Datastore  
=====  
1vSphere

2<sup>min</sup>

The screenshot shows the vSphere Configuration page for an ESXi host. The top navigation bar includes: Getting Started, Summary, Virtual Machines, Resource Allocation, Performance, Configuration, Tasks & Events, Alarms, Permissions, Maps, Storage Views, and Hardware Status. The main content area has a yellow warning box with the following text:

**The ESXi host does not have persistent storage.**  
To run virtual machines, create at least one datastore for maintaining virtual machines and other system files.  
Note: If you plan to use iSCSI or a network file system (NFS), ensure that your storage adapters and network connections are properly configured before continuing.  
To add storage now, [click here to create a datastore...](#)

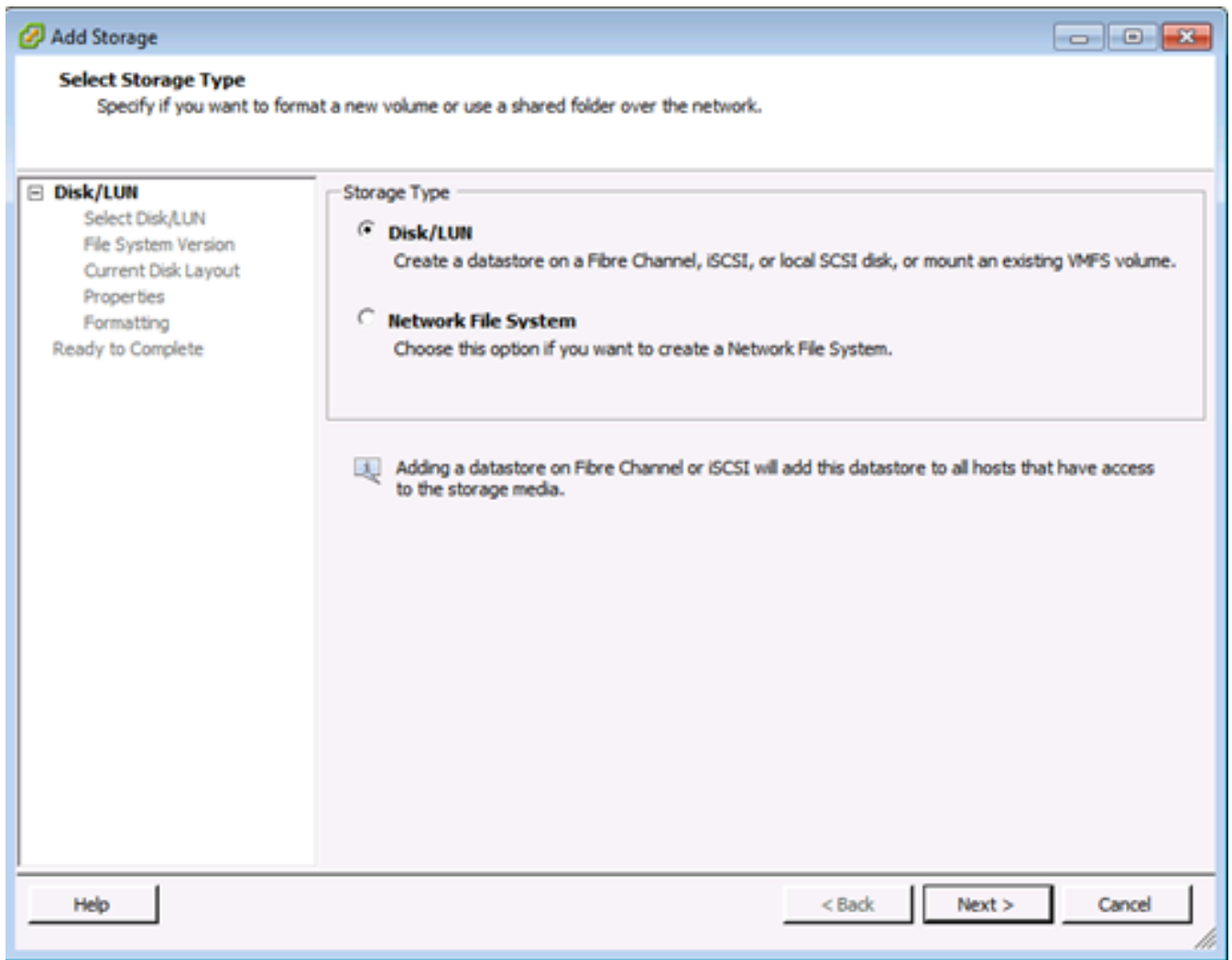
On the left, there are two panels: **Hardware** (Processors, Memory, Storage, Networking, Storage Adapters, Network Adapters, Advanced Settings, Power Management) and **Software** (Licensed Features, Time Configuration, DNS and Routing, Authentication Services, Power Management, Virtual Machine Startup/Shutdown, Virtual Machine Swapfile Location, Security Profile, Host Cache Configuration, System Resource Allocation, Agent VM Settings, Advanced Settings).

The main area is titled **View: Datastores Devices**. Under **Datastores**, there is a table with the following columns: Identification, Status, Device, Drive Type, Capacity, Free, Type, and Last Update. The table is currently empty.

Below the table is a section titled **Datastore Details**, which is also empty.

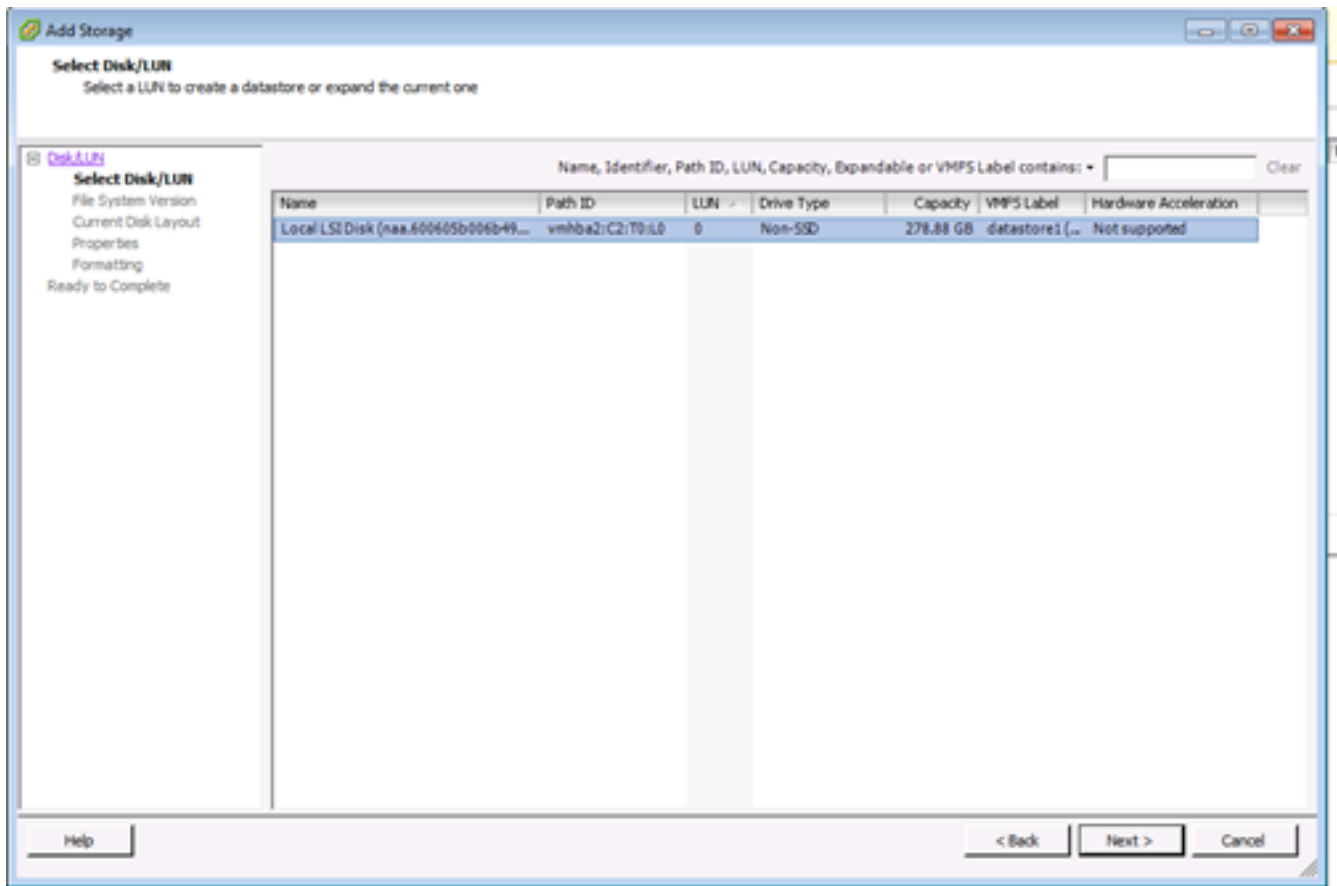
3

4/LUN<sup>min</sup>



5LUNVMFSdatastoreLUN

:VMFSLUNVMFS



6 显示以下选项：

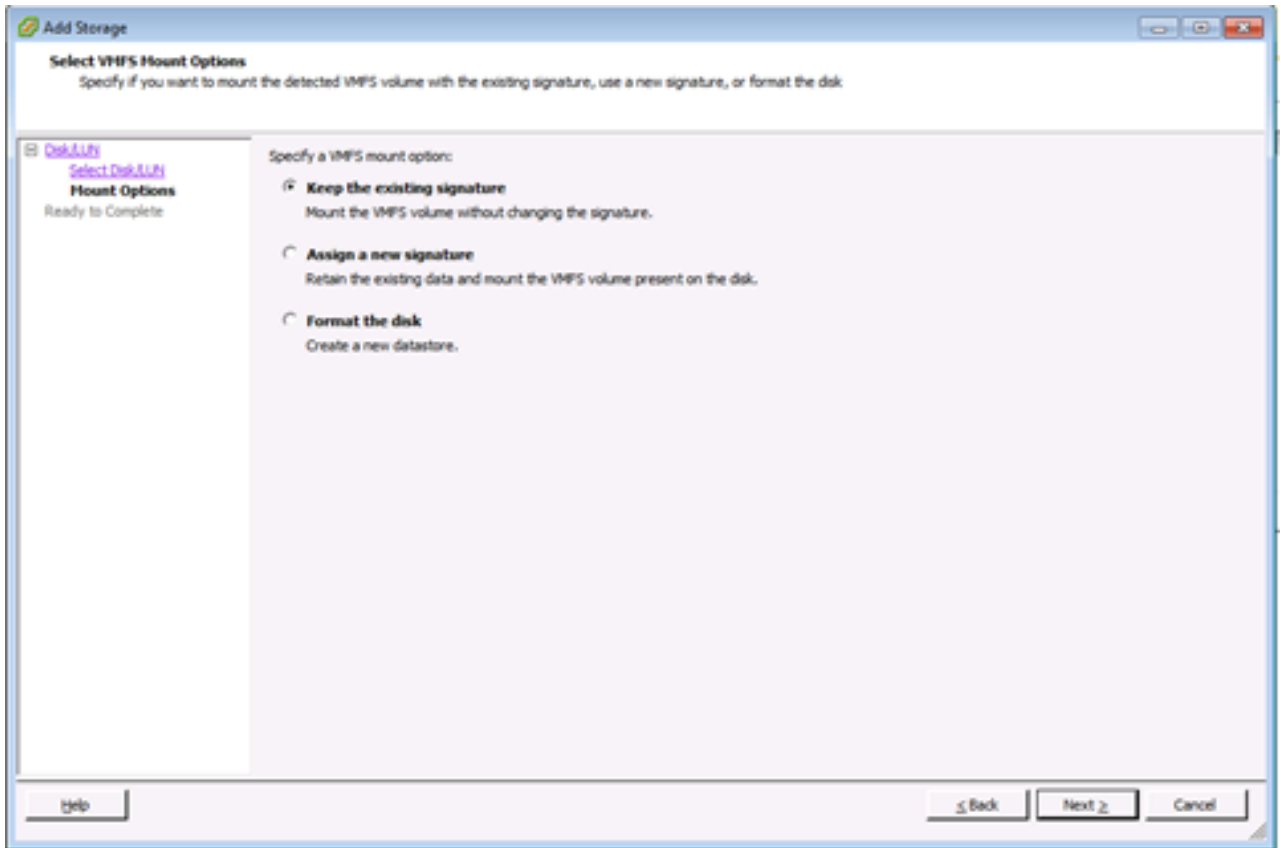
**保留现有签名:**永久装载LUN（例如，在重新启动后装载LUN）

**分配新签名:**重新签名LUN

**格式化磁盘:**重新格式化LUN

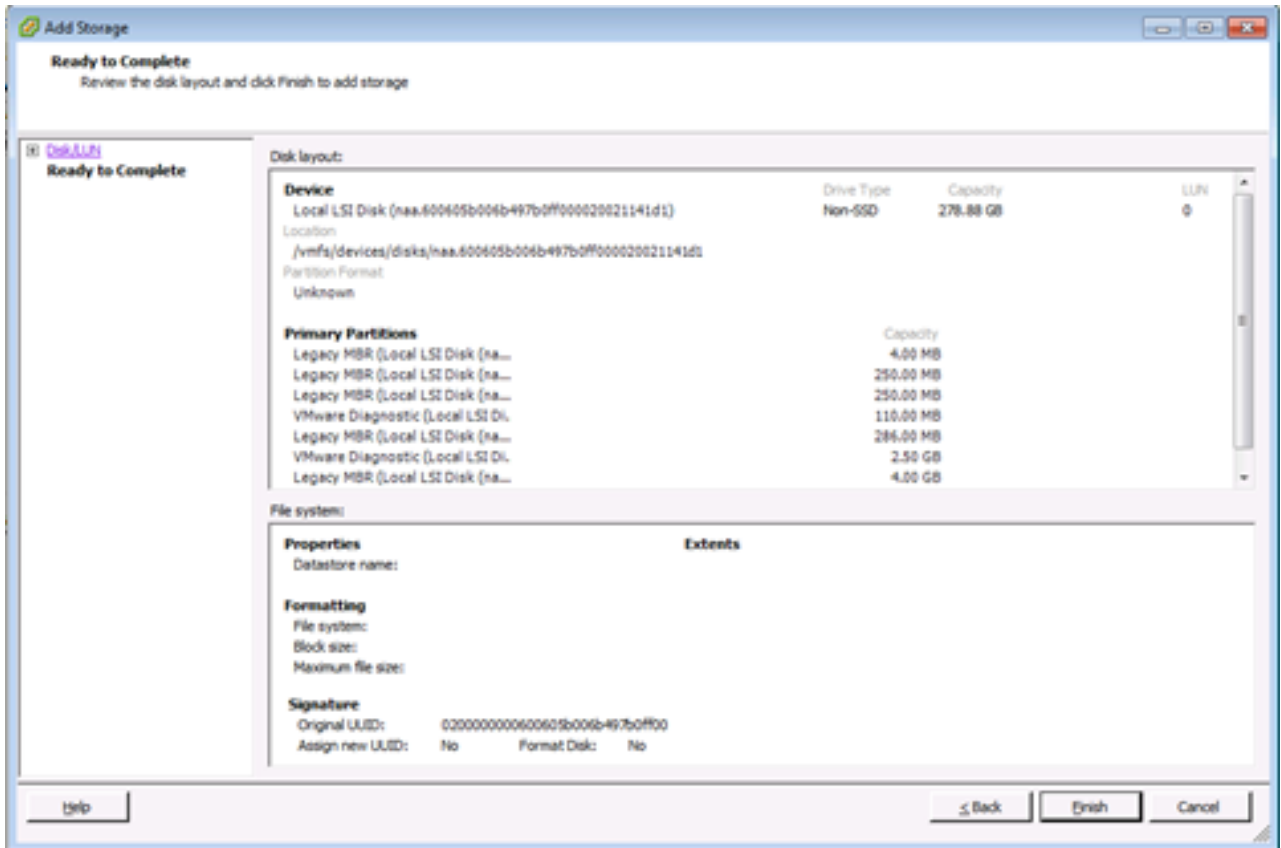
**备注:** **格式化磁盘**选项将删除LUN上的任何现有数据。在尝试重新签名之前，请确保在任何其他主机上没有运行该VMFS卷的虚拟机，因为这些虚拟机在vCenter Server资产中变得无效，并且它们将在各自的主机上重新注册。

**Assign a New Signature**Next



7

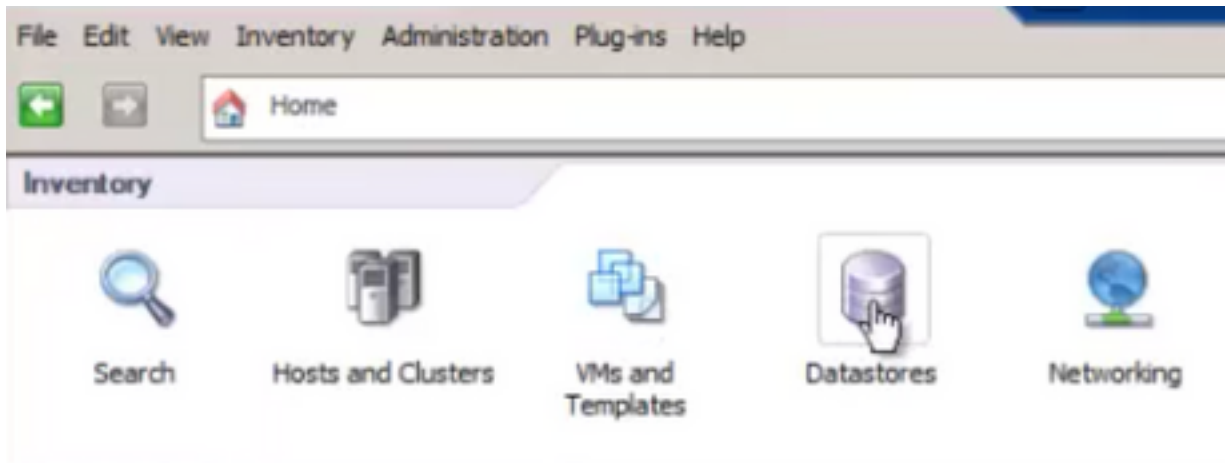
8" (Ready to Complete) Datastore (Finish)



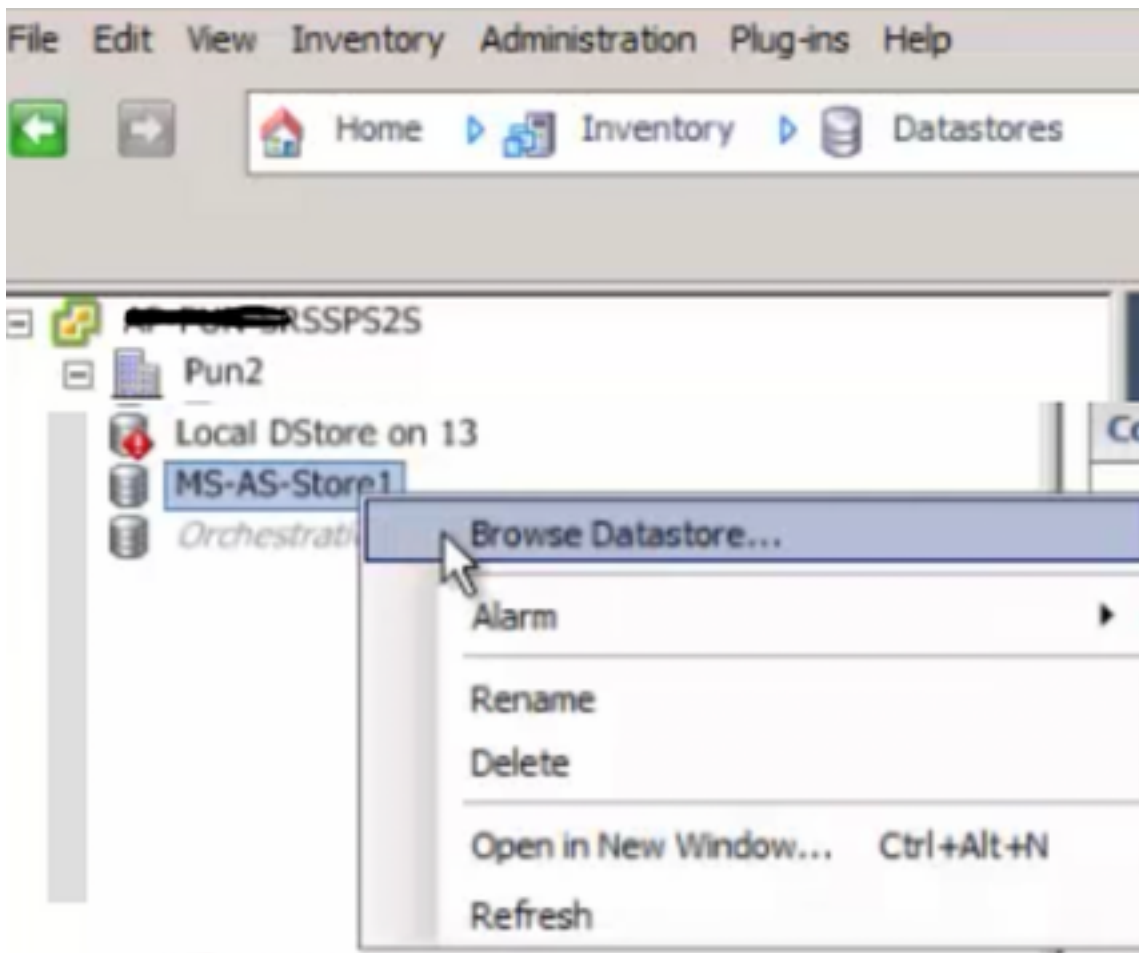
=====

-----

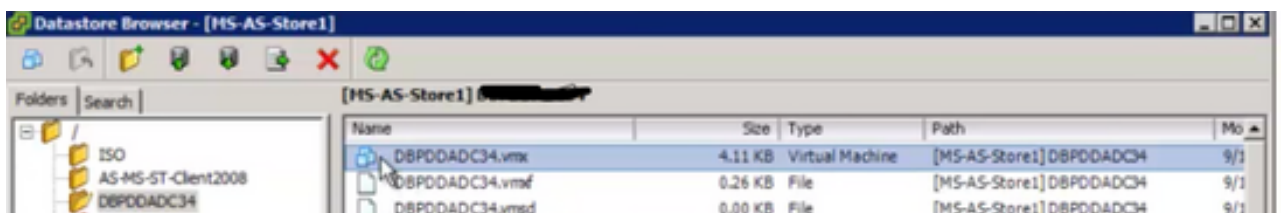
1vSphereUIInventory List> Click Datastore(Datastore)



2Datastore“Browse Datastore”

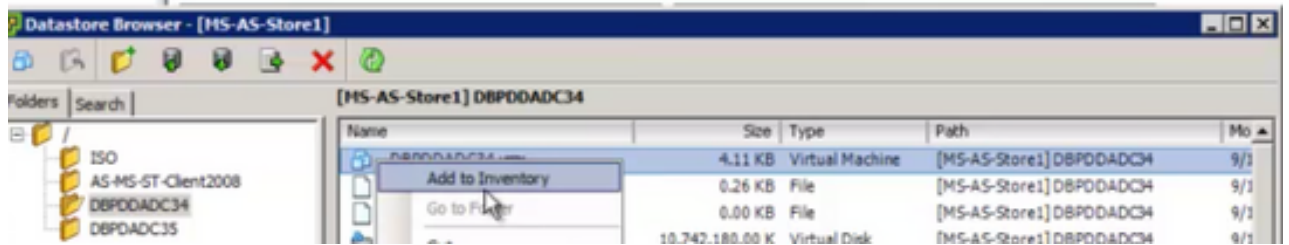


3VM



4.vmx"

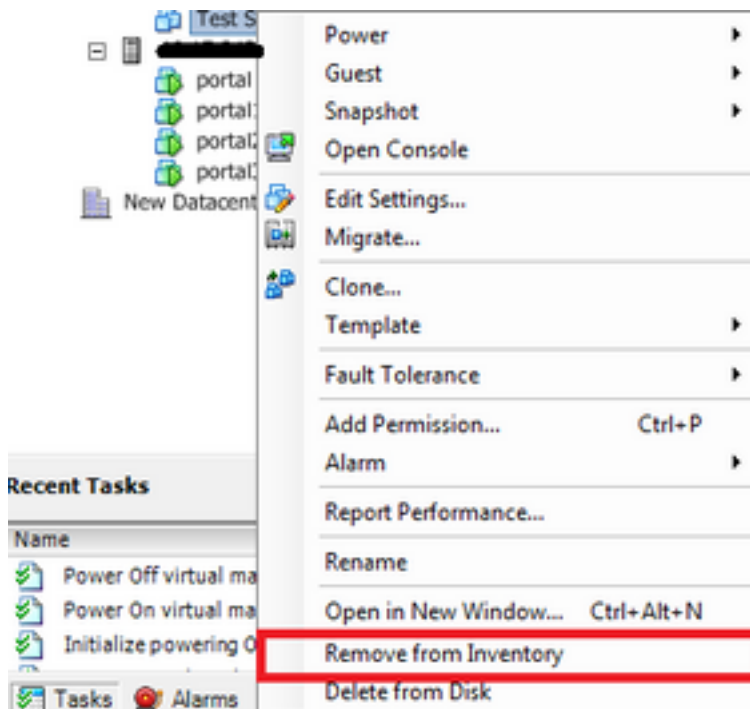




5<sup>th</sup> VMESXi

6

7<sup>th</sup>



8

VMESXiESivSphereVM<sup>th</sup>

## CSCvr11972

[CSCvr11972 MRAID12G](#)

<https://bst.cloudapps.cisco.com/bugsearch/bug/CSCvr11972>