

通过灾难恢复恢复独立vManage

目录

[简介](#)

[背景信息](#)

[Backup Configuration-db](#)

[恢复vManage](#)

[步骤1:vManage上的最低配置](#)

[第二步：复制备份配置和根证书](#)

[第三步：安装根证书](#)

[第四步：更新基本信息](#)

[第五步：安装vManage证书](#)

[第六步：恢复数据库](#)

[步骤 7.检查服务](#)

[步骤 8重新验证控制器](#)

[步骤 9将更新发送到控制器](#)

简介

本文档介绍通过使用配置数据库备份恢复vManage所涉及的步骤。

背景信息

本文档假定已定期进行配置db备份，并且由于某些原因，独立vManage不可恢复，需要重置软件或进行新安装。

本文档可帮助您恢复所有策略、模板、配置和边缘设备证书。

Backup Configuration-db

```
vManage_rcdn01# request nms configuration-db backup path 05_08_20_configdb
Starting backup of configuration-db
config-db backup logs are available in /var/log/nm/neo4j-backup.log file
Successfully saved database to /opt/data/backup/05_08_20_configdb.tar.gz
```

scp到外部服务器。

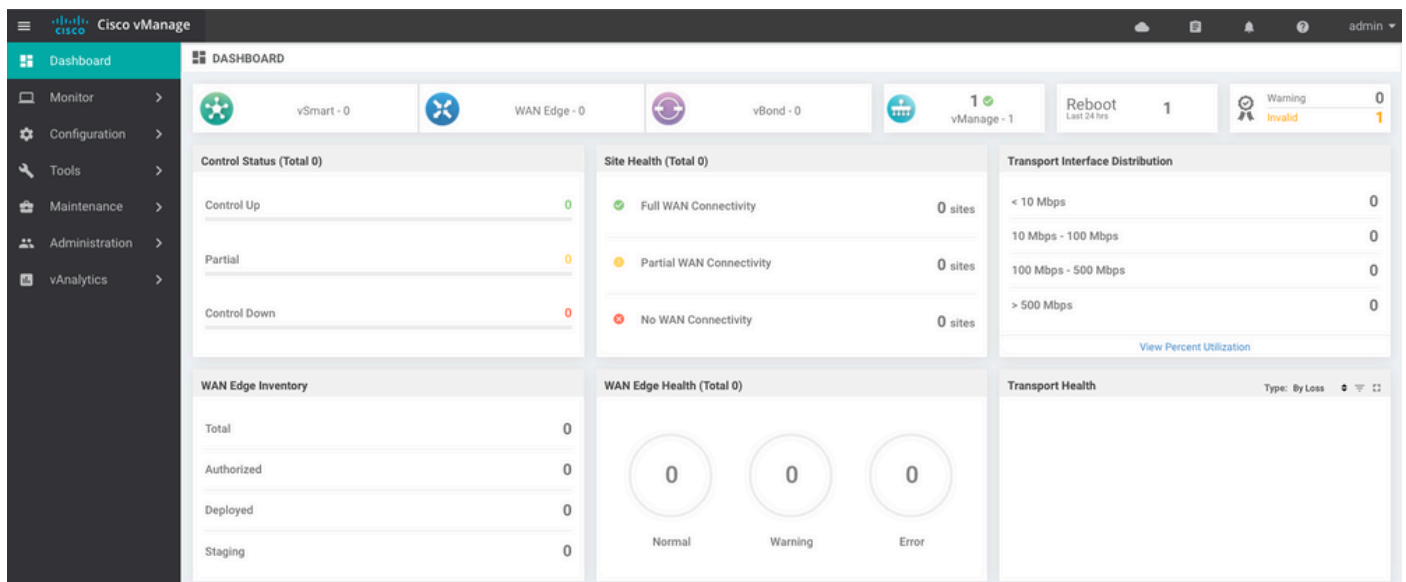
```
vManage_rcdn01# vshell
vManage_rcdn01:~$ scp /opt/data/backup/05_08_20_configdb.tar.gz user@10.2.3.1://home/ftpuser/ftp/amaugu
amaugust@10.2.3.1's password:
```

恢复vManage

通过命令重置vManage模拟灾难：

```
vManage_rcdn01# request software reset
```

现在，您有一个新的vManage，与图中所示的类似，建议在恢复备份之前，按照正确的顺序执行恢复过程。



步骤1:vManage上的最低配置

```
system
 host-name          vManage_rcdn01
 system-ip         xx.xx.xx.xx
 site-id           100
 organization-name ****.cisco
 vbond vbond.list
 !
 !
 vpn 0
 host vbond.list ip 10.2.3.4 10.2.3.5
 interface eth0
 ip address 10.1.3.8/24
 tunnel-interface
 no shutdown
 !
 ip route 0.0.0.0/0 10.1.3.1
```

```
!  
vpn 512  
  interface eth1  
    ip address 10.11.3.8/24  
    no shutdown  
  !  
  ip route 0.0.0.0/0 10.1.3.1  
  !
```

第二步：复制备份配置和根证书

<#root>

```
vManage_rcdn01:~$ scp am****@xx.xx.xx.xx://home/ftuser/ftp/am****/05_08_20_configdb.tar.gz .  
am****@xx.xx.xx.xx's password:  
05_08_20_configdb.tar.gz                                100% 484KB 76.6MB/s 00:
```

Verify

```
vManage_rcdn01:~$ ls -lh  
total 492K  
-rw-r--r-- 1 admin admin 394 May 8 15:20 archive_id_rsa.pub  
-rwxr-xr-x 1 admin admin 485K May 8 15:39 05_08_20_configdb.tar.gz
```

Copy root certificate from other controller:

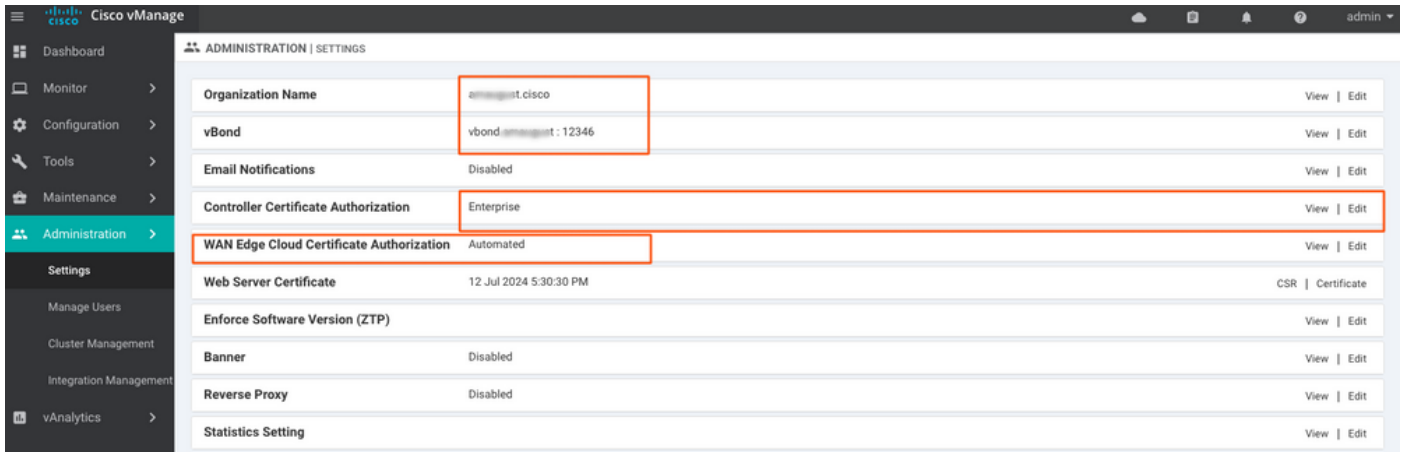
```
vManage_rcdn01:~$ scp admin@vbond://home/admin/root.crt .  
viptela 18.4.4  
admin@vbond's password:  
root.crt                                                100% 1380    2.8MB/s 00:00
```

第三步：安装根证书

```
vManage_rcdn01# request root-cert-chain install /home/admin/root.crt  
Uploading root-ca-cert-chain via VPN 0  
Copying ... /home/admin/root.crt via VPN 0  
Updating the root certificate chain..  
Successfully installed the root certificate chain
```

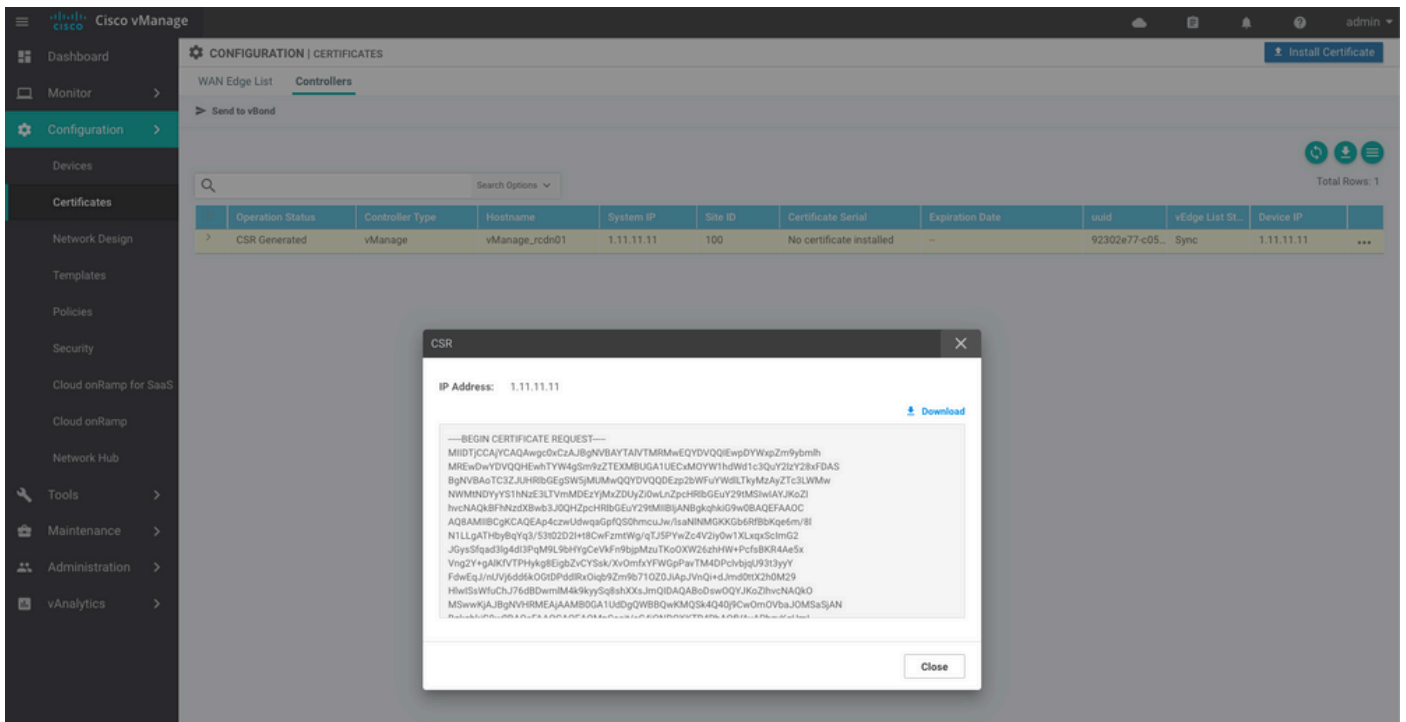
第四步：更新基本信息

导航至 Administration > Settings 并配置vBond IP、组织名称和证书的基本信息。



第五步：安装vManage证书

请使用 root.crt 安装在Step 2中。



Cisco vManage CONFIGURATION | CERTIFICATES

WAN Edge List **Controllers** Install Certificate

Send to vBond

No file chosen

Search Options

Total Rows: 1

Operation Status	Controller Type	Hostname	System IP	Site ID	Certificate Serial	Expiration Date	uuid	vEdge List St...	Device IP
> CSR Generated	vManage	vManage_rcdn01	1.11.11.11	100	No certificate installed	-	92302e77-c05...	Sync	1.11.11.11

Install Certificate

Certificate Text Select a file

```

-----BEGIN CERTIFICATE-----
MIIEQCCyggAwIBAgITwjpFhbasYwDQYJKoZIhvcNAQELBQAwDELMAgGA1UE
BMBQVWVudXN0LmNpczNMRQwEYDVQQKJzEwLmNpczNMRQwEYDVQQDEwZ3b2
Z3Z3Z3Z3Z3Z3Z3Z3Z3Z3Z3Z3Z3Z3Z3Z3Z3Z3Z3Z3Z3Z3Z3Z3Z3Z3Z3Z3Z3
Z3Z3Z3Z3Z3Z3Z3Z3Z3Z3Z3Z3Z3Z3Z3Z3Z3Z3Z3Z3Z3Z3Z3Z3Z3Z3Z3Z3Z3
b3R0QTAeFwYMDA1MDgxNjE0MDUyMjE0MjE0MDUyMjE0MDUyMjE0MDUyMjE0
EwYJUUZETMDEGAFUECBMKGQ2FsaWZzcm5pYTERMAAGAwIBEMiUZFulEpvc2Uv
BgNVBAsTDmFYXVndXN0LmNpczNMRQwEYDVQQKJzEwLmNpczNMRQwEYDVQQDE
A1UEAA6Mdm1hbmFnZS0505MjMwMmUzNy1jMDVlLTQzMmE1YXN0Y2JhM2ZzMWQ1
MmYmMC52aXB0ZWwhLmVnbTEiMCAgCGSgSib3DQeJARYTc3VwcG9ydEJ2aXB0Z
LmVnbTEiMCAgCGSgSgSgSgSgSgSgSgSgSgSgSgSgSgSgSgSgSgSgSgSgSgS
hZALeP-SgZT7TbuhmKxwHympuVJfS5y4AEcZ8gpmK1v47d9yPpFAsBc
SvSoP6kyeT2MGXOFdeStMNVyKasLrCJhRrErfemndSYQHSNzlpS/Wx2IAhZB
Z/W46TM7kyq01tus4R1v3H7ASkeAHucVZ4NmPoaJsn1Uzx8IPB1oG2zwmErJP
17zpn8WBVhT2r0QAz3Jb246Pd7d8sm8XcBKf51FYrnxepDhrQz3XZUCToqm/

```

Install Cancel

Cisco vManage TASK VIEW

Install Certificate Initiated By: admin From: 169.254.0.253

Total Task: 1 | Success: 1

Search Options

Total Rows: 1

Status	Message	Device Type	Device IP	vManage IP
Success	Successfully synced vEdge list on vManage-9...	vManage	92302e77-c05c-462a-a717-5f013b31d52f	1.11.11.11

```

[8-May-2020 16:15:06 UTC] Install Certificate, on device 92302e77-c05c-462a-a717-5f013b31d52f, started by user "admin" from IP address "169.254.0.253"
[8-May-2020 16:15:06 UTC] Pushing serial list to vManage-92302e77-c05c-462a-a717-5f013b31d52f (vManage_rcdn01)
[8-May-2020 16:15:06 UTC] Started processing serial list file on vManage-92302e77-c05c-462a-a717-5f013b31d52f (vManage_rcdn01)
[8-May-2020 16:15:07 UTC] Completed processing serial list file on vManage-92302e77-c05c-462a-a717-5f013b31d52f (vManage_rcdn01)
[8-May-2020 16:15:07 UTC] Done - Push vSmart List for vManage-92302e77-c05c-462a-a717-5f013b31d52f (vManage_rcdn01)
[8-May-2020 16:15:07 UTC] Pushed serial list to vManage-92302e77-c05c-462a-a717-5f013b31d52f (vManage_rcdn01)
[8-May-2020 16:15:07 UTC] Updated controllers with new certificate serial number of vManage-92302e77-c05c-462a-a717-5f013b31d52f

```

Cisco vManage DASHBOARD

vSmart - 0 | WAN Edge - 0 | vBond - 0 | vManage - 1 | Reboot Last 24 hrs: 1 | Warning Invalid: 0

Control Status (Total 0)

Control Up	0
Partial	0
Control Down	0

Site Health (Total 0)

Full WAN Connectivity	0 sites
Partial WAN Connectivity	0 sites
No WAN Connectivity	0 sites

Transport Interface Distribution

< 10 Mbps	0
10 Mbps - 100 Mbps	0
100 Mbps - 500 Mbps	0
> 500 Mbps	0

View Percent Utilization

WAN Edge Inventory

Total	0
Authorized	0
Deployed	0
Staging	0

WAN Edge Health (Total 0)

Normal	0
Warning	0
Error	0

Transport Health Type: By Loss

第六步：恢复数据库

<#root>

```
vManage_rcdn01# request nms configuration-db restore path /home/admin/05_08_20_configdb.tar.gz

Configuration database is running in a standalone mode
0 [main] INFO com.viptela.vmanage.server.deployment.cluster.ClusterConfigurationFileHandler - Trying to
4 [main] INFO com.viptela.vmanage.server.deployment.cluster.ClusterConfigurationFileHandler - Working
Successfully saved cluster configuration for localhost
Starting DB backup from: localhost
Creating directory: local
cmd to backup db: sh /usr/bin/vconfd_script_nms_neo4jwrapper.sh backup localhost /opt/data/backup/local
Finished DB backup from: localhost
Stopping NMS application server on localhost
Stopping NMS configuration database on localhost
Resetting NMS configuration database on localhost
Restoring from DB backup: /opt/data/backup/staging/graph.db-backup
cmd to restore db: sh /usr/bin/vconfd_script_nms_neo4jwrapper.sh restore /opt/data/backup/staging/graph
Successfully restored DB backup: /opt/data/backup/staging/graph.db-backup
Starting NMS configuration database on localhost
Waiting for 10s before starting other instances...
Polling neo4j at: localhost
NMS configuration database on localhost has started.
Updating DB with the saved cluster configuration data
Successfully reinserted cluster meta information
Starting NMS application-server on localhost
Waiting for 120s for the instance to start...
Removed old database directory: /opt/data/backup/local/graph.db-backup
Successfully restored database
```

此步骤需要较长时间，具体取决于备份。

您可以通过以下方式验证该流程： tailing vShell上的日志。

<#root>

vManage_rcdn01:~\$

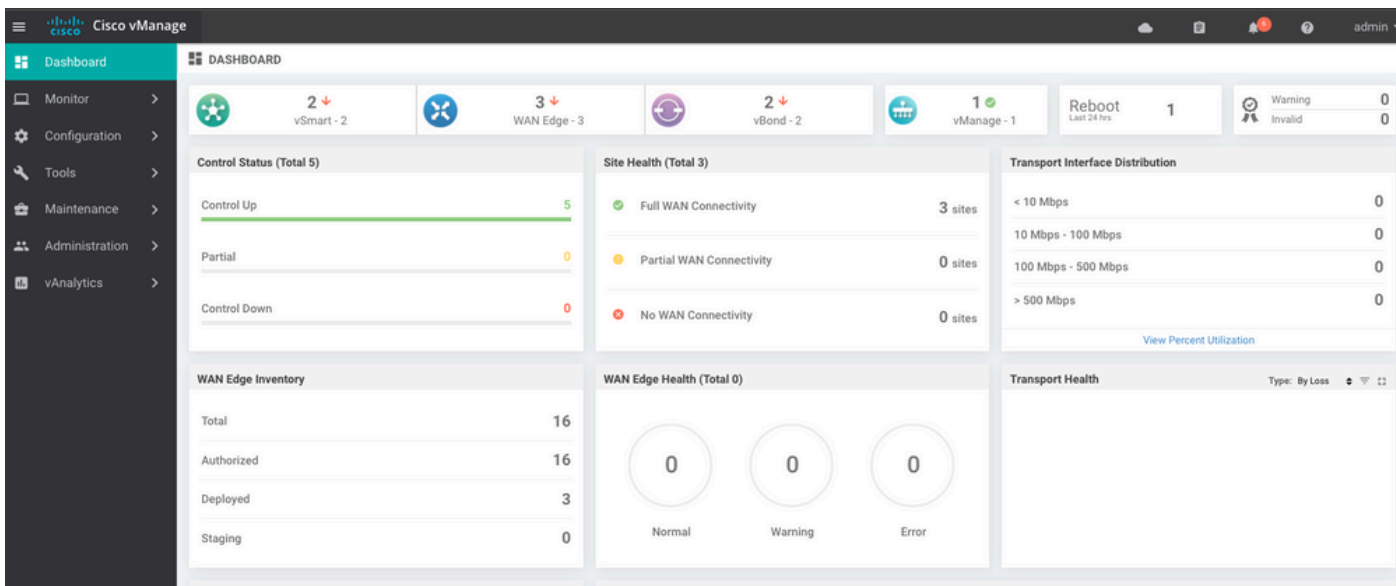
```
tail -fq /var/log/nms/vmanage-server.log /var/log/nms/neo4j-out.log
```

步骤 7.检查服务

```
vManage_rcdn01# request nms all status
```

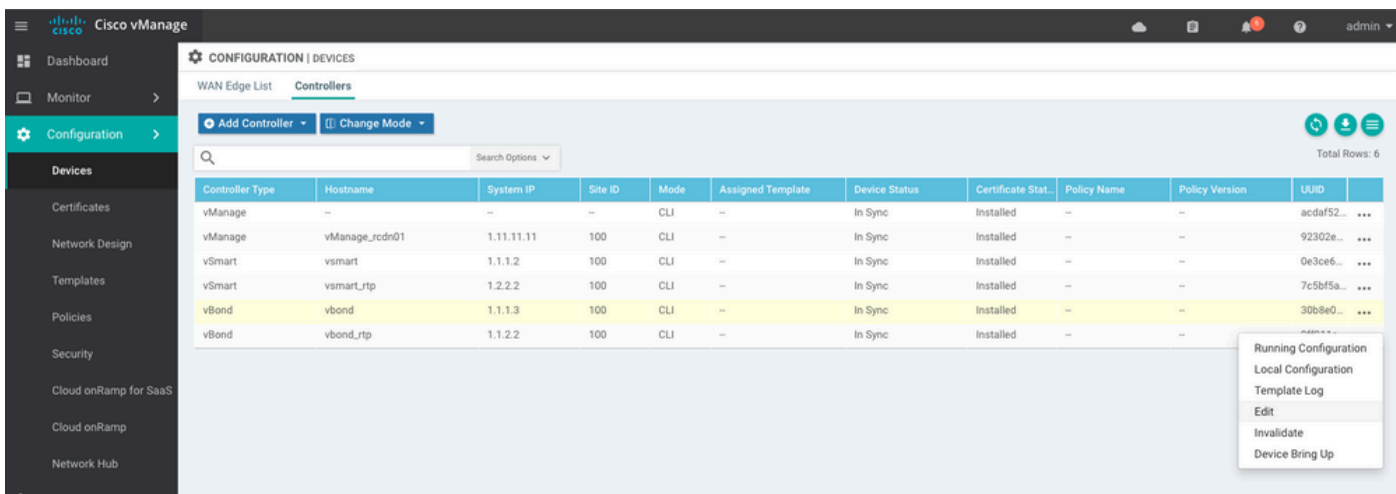
步骤 8重新验证控制器

目前，您可以观察到所有策略、模板和配置都已加载到vManage中，但所有控制器均已关闭。

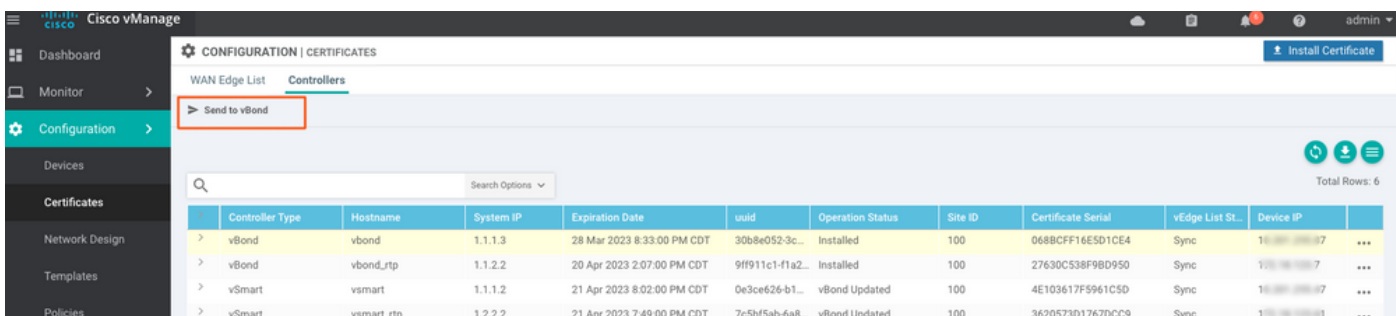


您需要对所有控制器重新进行身份验证。

导航至 Configuration > Devices. 编辑每个控制器并填写管理IP地址 (管理IP可以在本地配置中找到) 用户名和密码。



步骤 9 将更新发送到控制器



Cisco vManage CONFIGURATION | CERTIFICATES

WAN Edge List Controllers

Send to Controllers

Search Options

Total Rows: 15

State	Device Model	Chassis Number	Hostname	IP Address*	Serial No./Token	Validate	
	vEdge Cloud	ceaaf1eb3-62cf-059d-634a-5649fca28125	Site03_vEdge...	1.1.1.6	E80C7777	Invalid Staging Valid	...
	C1101-4P	C1101-4P-FGL221792P7	Site01_C1101	1.1.1.5	0163308F	Invalid Staging Valid	...
	ISR4451-X	ISR4451-X/K9-FOC16491MWM	Site02_ISR44...	1.1.1.4	F42E	Invalid Staging Valid	...
	CSR1000v	CSR-953188CO-2D85-5D4B-A24A-2CEEE71...	--	--	Token - 40fcfc5d96bc40fcc39a0d7bfc7e354	Invalid Staging Valid	...
	CSR1000v	CSR-91AA7B9A-C7E7-88E9-F205-15B7322...	--	--	Token - 18bb348dfec64ef3b5712046ccb774	Invalid Staging Valid	...

现在，您会看到所有设备都可以通过vManage进行管理。

Cisco vManage DASHBOARD

2 vSmart - 2 3 WAN Edge - 3 2 vBond - 2 1 vManage - 1 Reboot Last 24 hrs: 3 Warning Invalid: 0

Control Status (Total 4)

- Control Up: 4
- Partial: 0
- Control Down: 0

Site Health (Total 2)

- Full WAN Connectivity: 2 sites
- Partial WAN Connectivity: 0 sites
- No WAN Connectivity: 0 sites

Transport Interface Distribution

- < 10 Mbps: 9
- 10 Mbps - 100 Mbps: 0
- 100 Mbps - 500 Mbps: 0
- > 500 Mbps: 0

View Percent Utilization

WAN Edge Inventory

- Total: 15
- Authorized: 15
- Deployed: 3
- Staging: 0

WAN Edge Health (Total 2)

- Normal: 2
- Warning: 0
- Error: 0

Transport Health

Type: By Loss

Top Applications

No data to display

Application-Aware Routing

Type: By Loss

Tunnel Endpoints	Avg. Latency (ms)	Avg. Loss (%)	Avg. Jitter (ms)
Site02_ISR4451:default-Site03_vEdge_Cloud...	50.5	0.013	37.333
Site01_C1101:default-Site02_ISR4451:default	32.167	0.012	0
Site02_ISR4451:default-Site01_C1101:default	32	0	0
Site01_C1101:default-Site03_vEdge_Cloud.d...	25.917	0	41.083

Cisco vManage CONFIGURATION | TEMPLATES

Device Feature

Add Template

Template Type: Non-Default

Search Options

Total Rows: 10

Name	Description	Type	Device Model	Device Templates	Devices Attached	Updated By	Last Updated	
vEdge_VPN_0	Default Transport VPN tem...	WAN Edge VPN	C1111-4PLTEEA C1117-4P...	0	0	admin	23 Apr 2020 9:30:47 AM C...	...
Default_AAA	Default AAA template settin...	AAA	C1111-4PLTEEA C1117-4P...	1	1	admin	23 Apr 2020 9:42:40 AM C...	...
cEdge_VPN_0	Default Transport VPN tem...	WAN Edge VPN	C1111-4PLTEEA C1117-4P...	1	1	admin	23 Apr 2020 9:31:47 AM C...	...
vEdge_VPN_512_interface	VPN 512 interface config	WAN Edge Interface	C1111-4PLTEEA C1117-4P...	0	0	admin	23 Apr 2020 9:33:40 AM C...	...
vEdge_VPN_0_interface	VPN 0 interface config	WAN Edge Interface	C1111-4PLTEEA C1117-4P...	0	0	admin	23 Apr 2020 9:31:07 AM C...	...
Default_Banner	Banner for amaugust.cisco	Banner	ISR4451-X C1101-4P vEd...	1	1	admin	23 Apr 2020 8:17:38 AM C...	...
vEdge_VPN_512	VPN 512 add default route	WAN Edge VPN	C1111-4PLTEEA C1117-4P...	0	0	admin	23 Apr 2020 9:32:40 AM C...	...
cEdge_VPN_0_interface	VPN 0 interface config	WAN Edge Interface	C1111-4PLTEEA C1117-4P...	1	1	admin	23 Apr 2020 9:15:37 AM C...	...
cEdge_VPN_512	VPN 512 add default route	WAN Edge VPN	C1111-4PLTEEA C1117-4P...	1	1	admin	23 Apr 2020 9:33:16 AM C...	...
cEdge_VPN_512_interface	VPN 512 interface config	WAN Edge Interface	C1111-4PLTEEA C1117-4P...	1	1	admin	23 Apr 2020 9:34:20 AM C...	...

关于此翻译

思科采用人工翻译与机器翻译相结合的方式将此文档翻译成不同语言，希望全球的用户都能通过各自的语言得到支持性的内容。

请注意：即使是最好的机器翻译，其准确度也不及专业翻译人员的水平。

Cisco Systems, Inc. 对于翻译的准确性不承担任何责任，并建议您总是参考英文原始文档（已提供链接）。