

在多站点环境中配置和验证EVPN/VxLAN

目录

[简介](#)

[先决条件](#)

[要求](#)

[使用的组件](#)

[相关产品](#)

[背景信息](#)

[多站点如何有帮助](#)

[其他优势](#)

[支持的拓扑](#)

[拓扑](#)

[配置](#)

[验证](#)

[故障排除](#)

[相关信息](#)

简介

本文档介绍如何使用Cisco Nexus 9000系列交换机配置和验证以太网VPN/虚拟可扩展局域网多站点环境。

先决条件

要求

Cisco 建议您了解以下主题：

- 多协议标签交换(MPLS)第3层VPN
- 多协议 — 边界网关协议(MP-BGP)
- 以太网VPN(EVPN)

使用的组件

本文档中的信息基于以下软件和硬件版本：

leaf1#	N5K-C5672UP-16G-SUP	系统：版本7.3(0)N1(1)
leaf2#	N9K-C92160YC-X	NXOS：版本9.2(3)
spine1#	N9K-C9396PX	NXOS：版本9.2(3)
spine2#	N9K-C9396PX	NXOS：版本9.2(3)

MultisiteBG1#	N9K-C93108TC-EX	NXOS : 版本9.2(3)
MultisiteBG2#	N9K-C-93108-FX	NXOS : 版本9.3(1)
multisitespine2#	N9K-C9372TX-E	NXOS : 版本9.2(3)
Multisastine1#	N9K-C92160YC-X	NXOS : 版本9.2(3)
MultisetLeaf1#	N9K-C93108TC-EX	NXOS : 版本7.0(3)I7(5)

本文档中的信息都是基于特定实验室环境中的设备编写的。本文档中使用的所有设备最初均采用原始（默认）配置。如果您的网络处于活动状态，请确保您了解所有命令的潜在影响。

相关产品

EVPN多站点边界网关的最低软件和硬件要求。

项目	要求
Cisco Nexus硬件	• Cisco Nexus 9300 EX平台
	• Cisco Nexus 9300 FX平台
	• Cisco Nexus 9332C平台
	• Cisco Nexus 9364C平台
	• Cisco Nexus 9500平台，带X9700-EX线卡
	• Cisco Nexus 9500平台，带X9700-FX线卡
Cisco NX-OS软件	Cisco NX-OS软件7.0(3)I7(1)版或更高版本

虚拟可扩展LAN(VXLAN)BGP EVPN站点的站点内部节点的硬件和软件要求与没有EVPN多站点BGW的站点内部节点相同

背景信息

数据中心是一个资源池，其中包含计算能力、存储和支持任何业务环境所需的应用程序。正确规划数据中心基础设施设计至关重要。现在看看关键需求是什么，以及它们如何克服。现代IT基础设施和数据中心部署需要高可用性、以更快的速度扩展的能力、高性能以及始终在线。

下面是几个探讨数据中心设计/架构领域的重要要求：

- 端口密度通过FEX得以改善。
- 通过硬件虚拟化(UCS)提高计算容量。
- 接入层上行链路带宽通过FI、Port-Channel得以改善。
- 机箱级冗余通过vPC得以改进。
- SDN交换矩阵通过ACI进行了改进 — 在交换矩阵中自动进行底层和重叠。

- DCNM改进了快速部署和支持新服务。
- 通过暗光纤或波长服务提高了长距离应用的带宽要求。
- 在所有地理冗余和扩展都是跳转/扩展数据中心环境的重要属性，多站点VxLAN/EVPN可帮助我们获得更好的DCI解决方案。

多站点如何有帮助

外部连接包括数据中心到网络其余部分的连接：到Internet、WAN或园区。为外部连接提供的所有选项都是多租户感知的，并侧重于到外部网络域的第3层传输。

- EVPN是下一代一体化VPN解决方案。
- 它不仅能完成许多其他的VPN技术，而且性能也有所提高。
- 与传统网络集成。
- 选择性通告/扩展：
 - 扩展只能使用第2类路由扩展的第2层特定VLAN/子网。
 - 仅扩展L3 — 特定的L3域可以使用类型5路由进行扩展。
- 使用类型4路由自动发现冗余组。
- 别名、地址批量提取、使用1类路由的SH/AA MH指示。
- 使用类型3路由自动发现组播隧道端点和MCAST隧道类型。

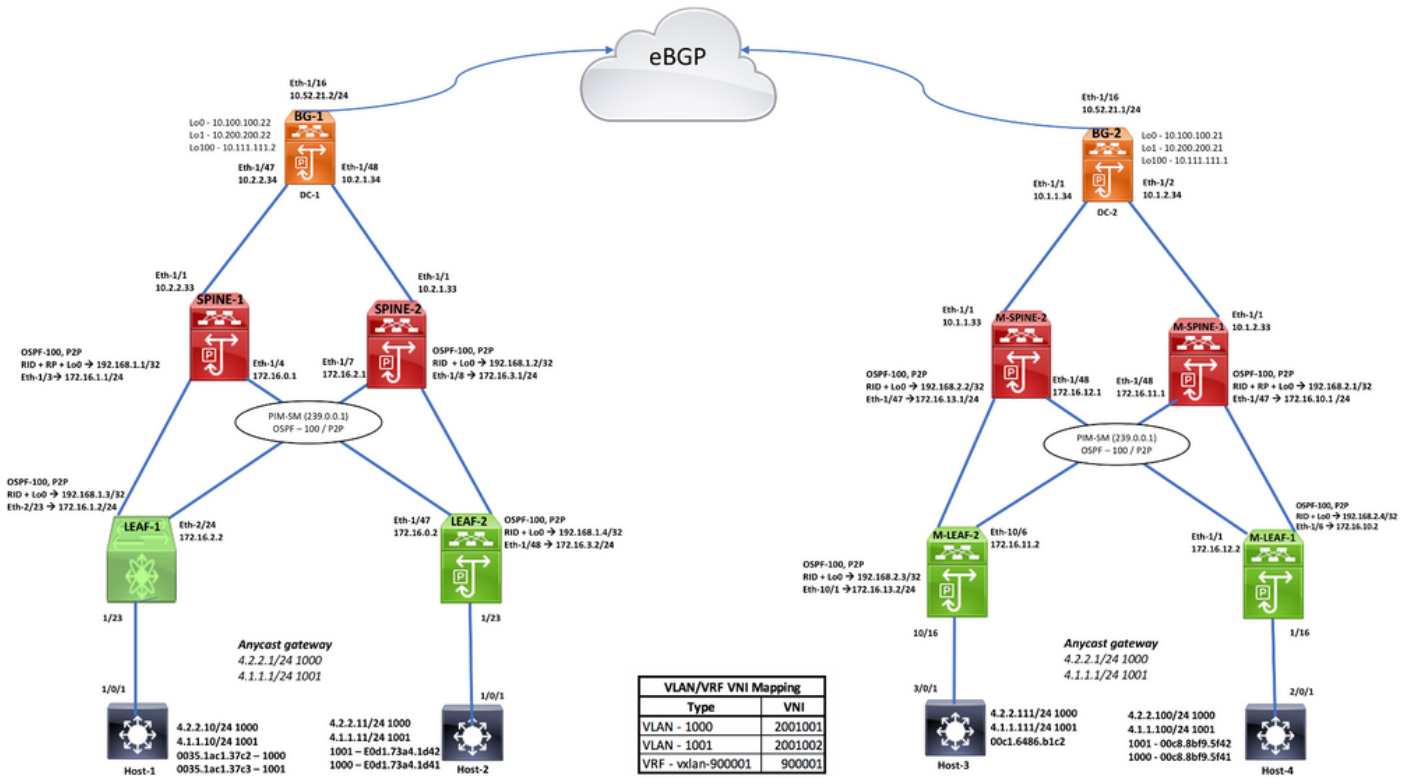
其他优势

- 跨数据中心和云的工作负载平衡。
- 对中断采取主动响应 — 降低接近灾难（如飓风、洪水等）的风险。
- 数据中心维护和迁移 — 计划在一段时间内发生的事件，与旧网络集成。
- 备份和灾难恢复。

支持的拓扑

- BGW到云模型
- 主干和超主干模型之间的BGW
- 主干模型上的BGW
- BGW背对背模式

拓扑



配置

DC-1, LEAF-1 CONFIGURATION				
Enable Features install feature-set fabric feature-set fabric hostname leaf1 feature fabric forwarding nv overlay evpn feature ospf feature bgp feature pim feature interface-vlan feature fabric access feature nv overlay feature vn-segment-vlan-based	VLAN-VNI Mapping vlan 1 vlan 101 vn-segment 900001 vlan 1000 vn-segment 2001002 vlan 1001 vn-segment 2001001 VLAN Config interface Vlan101 no shutdown vrf member vxlan-900001 ip forward interface Vlan1000 no shutdown mtu 9216 vrf member vxlan-900001 ip address 4.2.2.1/24 ipv6 address 4:2:0::1/64 fabric forwarding mode anycast-gateway interface Vlan1001 no shutdown mtu 9216 vrf member vxlan-900001 ip address 4.1.1.1/24 ipv6 address 4:1:0::1/64 fabric forwarding mode anycast-gateway Anycast GW mapping fabric forwarding anycast-gateway-mac 0000.2222.3333 Static RP Config ip pim rp-address 192.168.1.1 group-list 224.0.0.0/4 ip pim rp-address 192.168.1.2 group-list 224.0.0.0/4 ip pim ssm range 232.0.0.0/8 ip multicast multipath none	VTEP Config interface nve1 no shutdown source-interface loopback0 host-reachability protocol bgp member vni 900001 associate-vrf member vni 2001001 suppress-arp mcast-group 239.0.0.1 member vni 2001002 suppress-arp mcast-group 239.0.0.1	LEAF to SPINE interfaces/OSPF Config interface Ethernet2/23 no switchport ip address 172.16.1.2/24 ip ospf network point-to-point ip router ospf 100 area 0.0.0.0 ip pim sparse-mode interface Ethernet2/24 no switchport ip address 172.16.2.2/24 ip ospf network point-to-point ip router ospf 100 area 0.0.0.0 ip pim sparse-mode interface loopback0 ip address 192.168.1.3/24 ip router ospf 100 area 0.0.0.0 ip pim sparse-mode router ospf 100 router-id 192.168.1.3	BGP Config router bgp 200 router-id 192.168.1.3 address-family ipv4 unicast address-family l2vpn evpn neighbor 192.168.1.1 remote-as 200 update-source loopback0 address-family ipv4 unicast address-family l2vpn evpn send-community extended neighbor 192.168.1.2 remote-as 200 update-source loopback0 address-family ipv4 unicast address-family l2vpn evpn send-community extended evpn vni 2001001 l2 <<<<<<< L2VNI Config rd auto route-target import auto route-target export auto vni 2001002 l2 rd auto route-target import auto route-target export auto vrf context vxlan-900001 vni 900001 <<<<<<< L3VNI Config rd auto address-family ipv4 unicast route-target both auto route-target both auto evpn address-family ipv6 unicast route-target both auto route-target both auto evpn

DC-1 SPINE -1 Configuration

Enabling Features, RP Config	OSPF Configuration	BGP/EVPN Configuration
<pre>hostname spine1 boot n90s bootflash:/n90s-9.2.3.bin nv overlay evpn feature ospf feature bgp feature pim feature interface-vlan feature vn-segment-vlan-based feature nv overlay ip pim rp-address 192.168.1.1 group-list 234.0.0.0/4</pre>	<pre>interface Ethernet1/1 no switchport ip address 10.2.2.33/30 ip ospf network point-to-point ip router ospf 100 area 0.0.0.0 ip pim sparse-mode no shutdown interface Ethernet1/3 no switchport ip address 172.16.1.1/24 ip ospf network point-to-point ip router ospf 100 area 0.0.0.0 ip pim sparse-mode no shutdown interface Ethernet1/4 no switchport ip address 172.16.0.1/24 ip ospf network point-to-point ip router ospf 100 area 0.0.0.0 ip pim sparse-mode no shutdown interface loopback0 ip address 192.168.1.1/32 ip router ospf 100 area 0.0.0.0 ip pim sparse-mode router ospf 100 router-id 192.168.1.1</pre>	<pre>router bgp 200 router-id 192.168.1.1 address-family ipv4 unicast address-family l2vpn evpn neighbor 10.100.100.22 remote-as 200 update-source loopback0 address-family ipv4 unicast address-family l2vpn evpn send-community send-community extended route-reflector-client neighbor 192.168.1.3 remote-as 200 update-source loopback0 address-family ipv4 unicast send-community extended route-reflector-client address-family l2vpn evpn send-community extended route-reflector-client neighbor 192.168.1.4 remote-as 200 update-source loopback0 address-family ipv4 unicast send-community extended route-reflector-client address-family l2vpn evpn send-community extended route-reflector-client</pre>

DC-1 Border Gateway-1 Configuration			
Enabling Features, RouteMap, B-G Config	VLAN,VNI,VTEP Config	OSPF Configuration	BGP/EVPN Configuration
hostname MultisiteBG1 boot nxos bootflash:/nxos.9.2.3.bin nv overlay evpn feature ospf feature bgp feature pim feature fabric forwarding feature interface-vlan feature vn-segment-vlan-based feature lldp feature nv overlay evpn multisite border-gateway 200 delay-restore time 300 route-map RMAP-REDIST-DIRECT permit 10 match tag 54321	VLAN-VNI Mapping vlan 101 vn-segment 900001 vlan 1000 vn-segment 2001002 vlan 1001 vn-segment 2001001	interface Ethernet1/47 ip address 10.2.2.34/30 ip ospf network point-to-point ip router ospf 100 area 0.0.0.0 ip pim sparse-mode evpn multisite fabric-tracking no shutdown	router bgp 200 router-id 10.100.100.22 address-family ipv4 unicast redistribute direct route-map RMAP-REDIST-DIRECT neighbor 10.52.21.1 remote-as 100 update-source Ethernet1/16 address-family ipv4 unicast neighbor 10.100.100.21 remote-as 100 update-source loopback0 ebgp-multihop 5 peer-type fabric-external address-family l2vpn evpn send-community send-community extended rewrite-evpn-rt-asn neighbor 192.168.1.1 remote-as 200 update-source loopback0 address-family l2vpn evpn send-community send-community extended neighbor 192.168.1.2 remote-as 200 update-source loopback0 address-family l2vpn evpn send-community send-community extended
	VTEP Config interface nve1 no shutdown host-reachability protocol bgp source-interface loopback1 multisite border-gateway interface loopback100 member vni 900001 associate-vrf member vni 2001001 multisite ingress-replication ingress-replication protocol bgp member vni 2001002 multisite ingress-replication ingress-replication protocol bgp	Core-Facing Interface Config interface Ethernet1/16 mtu 9216 ip address 10.52.21.2/30 tag 54321 evpn multisite dc1-tracking no shutdown	interface Ethernet1/48 ip address 10.2.1.34/30 ip ospf network point-to-point ip router ospf 100 area 0.0.0.0 ip pim sparse-mode evpn multisite fabric-tracking no shutdown interface loopback0 ip address 10.100.100.22/32 tag 54321 ip router ospf 100 area 0.0.0.0 ip pim sparse-mode interface loopback1 ip address 10.200.200.22/32 tag 54321 ip router ospf 100 area 0.0.0.0 ip pim sparse-mode interface loopback100 ip address 10.111.111.2/32 tag 54321 ip router ospf 100 area 0.0.0.0 router ospf 100 router-id 10.100.100.22

DC-2 Border Gateway-2 Configuration			
Enabling Features, RouteMap, B-G Config	VLAN,VNI,VTEP Config	OSPF Configuration	BGP/EVPN Configuration
boot nxos bootflash:/nxos.9.3.0.221.bin hostname MultisiteBG2 nv overlay evpn feature ospf feature bgp feature pim feature fabric forwarding feature interface-vlan feature vn-segment-vlan-based feature lldp feature nv overlay evpn multisite border-gateway 100 delay-restore time 300 vlan 1,101,1000-1001 vlan 101 vn-segment 900001 vlan 1000 vn-segment 2001002 vlan 1001 vn-segment 2001001 route-map RMAP-REDIST-DIRECT permit 10 match tag 54321 interface Ethernet1/16 mtu 9216 ip address 10.52.21.1/30 tag 54321 evpn multisite dc1-tracking no shutdown	interface Vlan101 no shutdown vrf member vxlan-900001 ip forward interface nve1 no shutdown host-reachability protocol bgp source-interface loopback1 multisite border-gateway interface loopback100 member vni 900001 associate-vrf member vni 2001001 multisite ingress-replication ingress-replication protocol bgp member vni 2001002 multisite ingress-replication ingress-replication protocol bgp vrf context vxlan-900001 vni 900001 rd auto address-family ipv4 unicast route-target both auto route-target both auto evpn address-family ipv6 unicast route-target both auto route-target both auto evpn	interface Ethernet1/1 description SITE-INTERNAL INTERFACE mtu 9216 medium p2p ip address 10.1.1.34/30 ip ospf network point-to-point ip router ospf 100 area 0.0.0.0 ip pim sparse-mode evpn multisite fabric-tracking no shutdown interface Ethernet1/2 description SITE-INTERNAL INTERFACE mtu 9216 medium p2p ip address 10.1.2.34/30 ip ospf network point-to-point ip router ospf 100 area 0.0.0.0 ip pim sparse-mode evpn multisite fabric-tracking no shutdown interface loopback0 description RID AND BGP PEERING ip address 10.100.100.21/32 tag 54321 ip router ospf 100 area 0.0.0.0 ip pim sparse-mode interface loopback1 description NVE INTERFACE (PIP VTEP) ip address 10.200.200.21/32 tag 54321 ip router ospf 100 area 0.0.0.0 ip pim sparse-mode interface loopback100 description MULTI-SITE INTERFACE (VIP VTEP) ip address 10.111.111.1/32 tag 54321 ip router ospf 100 area 0.0.0.0 router ospf 100 router-id 10.100.100.21	router bgp 100 router-id 10.100.100.21 address-family ipv4 unicast redistribute direct route-map RMAP-REDIST-DIRECT maximum-paths 4 neighbor 10.52.21.2 remote-as 200 update-source Ethernet1/16 address-family ipv4 unicast neighbor 10.100.100.22 remote-as 200 update-source loopback0 ebgp-multihop 5 peer-type fabric-external address-family l2vpn evpn send-community send-community extended rewrite-evpn-rt-asn neighbor 192.168.2.1 remote-as 100 update-source loopback0 address-family l2vpn evpn send-community send-community extended neighbor 192.168.2.2 remote-as 100 update-source loopback0 address-family l2vpn evpn send-community send-community extended evpn vni 2001001 l2 rd auto route-target import auto route-target export auto vni 2001002 l2 rd auto route-target import auto route-target export auto

DC-2 SPINE -1 Configuration

Enabling Features, RP Config	OSPF Configuration	BGP/EVPN Configuration
<pre> boot nxos bootflash:/nxos.9.2.3.bin hostname MultisteSpine1 nv overlay evpn feature ospf feature bgp feature pim feature interface-vlan feature vn-segment-vlan-based feature nv overlay ip pim rp-address 192.168.2.1 group-list 224.0.0.0/4 </pre>	<pre> interface Ethernet1/1 mtu 9216 ip address 10.1.2.33/30 ip ospf network point-to-point ip router ospf 100 area 0.0.0.0 ip pim sparse-mode no shutdown interface Ethernet1/47 ip address 172.16.10.1/24 ip ospf network point-to-point ip router ospf 100 area 0.0.0.0 ip pim sparse-mode no shutdown interface Ethernet1/48 ip address 172.16.11.1/24 ip ospf network point-to-point ip router ospf 100 area 0.0.0.0 ip pim sparse-mode no shutdown interface loopback0 ip address 192.168.2.1/32 ip router ospf 100 area 0.0.0.0 ip pim sparse-mode router ospf 100 router-id 192.168.2.1 </pre>	<pre> router bgp 100 router-id 192.168.2.1 address-family ipv4 unicast address-family l2vpn evpn neighbor 10.100.100.21 remote-as 100 update-source loopback0 address-family l2vpn evpn send-community send-community extended route-reflector-client neighbor 192.168.2.3 remote-as 100 update-source loopback0 address-family ipv4 unicast send-community extended route-reflector-client address-family l2vpn evpn send-community extended route-reflector-client neighbor 192.168.2.4 remote-as 100 update-source loopback0 address-family ipv4 unicast send-community extended route-reflector-client address-family l2vpn evpn send-community extended route-reflector-client </pre>

DC-2, LEAF -1 Configuration

Enabling Features, RP, VTEP Config	VLAN,VNI Configuration	OSPF Configuration	BGP/EVPN Configuration
<pre> boot nxos bootflash:/nxos.7.0.3.17.5.bin hostname MultisteLeaf1 nv overlay evpn feature ospf feature bgp feature pim feature fabric forwarding feature interface-vlan feature vn-segment-vlan-based feature lldp feature nv overlay fabric forwarding anycast-gateway-mac 0000.2222.3333 ip pim rp-address 192.168.2.1 group-list 224.0.0.0/4 interface nve1 no shutdown host-reachability-protocol bgp source-interface loopback0 member vni 900001 associate-vrf member vni 2001001 suppress-arp mcast-group 239.0.0.1 member vni 2001002 suppress-arp mcast-group 239.0.0.1 </pre>	<pre> vlan 101 vn-segment 900001 vlan 1000 vn-segment 2001002 vlan 1001 vn-segment 2001001 interface Vlan101 no shutdown vrf member vxlan-900001 ip forward interface Vlan1000 no shutdown vrf member vxlan-900001 ip address 4.2.2.1/24 ipv6 address 4:2:0:1::1/64 fabric forwarding mode anycast-gateway interface Vlan1001 no shutdown vrf member vxlan-900001 ip address 4.1.1.1/24 ipv6 address 4:1:0:1::1/64 fabric forwarding mode anycast-gateway vrf context vxlan-900001 vni 900001 rd auto address-family ipv4 unicast route-target both auto route-target both auto evpn address-family ipv6 unicast route-target both auto route-target both auto evpn </pre>	<pre> interface Ethernet1/1 ip address 172.16.12.2/24 ip ospf network point-to-point ip router ospf 100 area 0.0.0.0 ip pim sparse-mode no shutdown interface Ethernet1/6 ip address 172.16.10.2/24 ip ospf network point-to-point ip router ospf 100 area 0.0.0.0 ip pim sparse-mode no shutdown interface Ethernet1/16 switchport switchport mode trunk no shutdown interface loopback0 ip address 192.168.2.4/32 ip router ospf 100 area 0.0.0.0 ip pim sparse-mode router ospf 100 router-id 192.168.2.4 </pre>	<pre> router bgp 100 router-id 192.168.2.4 address-family ipv4 unicast address-family l2vpn evpn neighbor 192.168.2.1 remote-as 100 update-source loopback0 address-family ipv4 unicast address-family l2vpn evpn send-community extended neighbor 192.168.2.2 remote-as 100 update-source loopback0 address-family ipv4 unicast address-family l2vpn evpn send-community extended evpn vni 2001001 l2 rd auto route-target import auto route-target export auto vni 2001002 l2 rd auto route-target import auto route-target export auto </pre>

验证

LEAF-1 VERIFICATION

<pre>leaf1# show cdp neighbors Capability Codes: R - Router, T - Trans-Bridge, B - Source-Route S - Switch, H - Host, I - IGMP, r - Repeater, V - VoIP-Phone, D - Remotely-Managed-Device, s - Supports-STP-Dispute Device-ID Local Intrfce Hldtme Capability Platform MX066-H-01-SM.cisco.com mgmt0 142 S I WS-C2960X-48T ToLeaf1 Eth1/23 163 S I WS-C3750X-24S spine1(SAL1948U4Y1) Eth2/23 156 R S s N9K-C9396PX spine2(SAL1949UELD) Eth2/24 152 R S s N9K-C9396PX leaf1# leaf1# sh ip int brief exclude down IP Interface Status for VRF "default"(1) Interface IP Address Interface Status Lo0 192.168.1.3 protocol-up/link-up/admin-up Eth2/23 172.16.1.2 protocol-up/link-up/admin-up Eth2/24 172.16.2.2 protocol-up/link-up/admin-up leaf1# leaf1# sh nve vrf VRF-Name VNI Interface Gateway-MAC ----- vxlan-900001 900001 nve1 00de.fb01.9fc1 leaf1# sh nve vxlan-params VxLAN Dest. UDP Port: 4789</pre>	<pre>leaf1# show ip pim rp PIM RP Status Information for VRF "default" BSR disabled Auto-RP disabled BSR RP Candidate policy: None BSR RP policy: None Auto-RP Announce policy: None Auto-RP Discovery policy: None RP: 192.168.1.1, (0), uptime: 3w1d priority: 0, RP-source: (local), group ranges: 224.0.0.0/4 RP: 192.168.1.2, (0), uptime: 3w1d priority: 0, RP-source: (local), group ranges: 224.0.0.0/4 leaf1# leaf1# sh nve interface Interface: nve1, State: Up, encapsulation: VXLAN VPC Capability: VPC-VFP-Only [not-notified] Local Router MAC: 00de.fb01.9fc1 Host Learning Mode: Control-Plane Source-Interface: loopback0 (primary: 192.168.1.3, secondary: 0) leaf1#</pre>	<pre>leaf1# sh nve peers Interface Peer-IP State LearnType Uptime Router-Mac ----- nve1 10.111.111.2 Up CP 3w1d 0200.0a6f.6f02 nve1 10.200.200.22 Up CP 3w1d n/a nve1 192.168.1.4 Up CP 3w1d 7079.b33e.8123 leaf1# leaf1# show nve vni Codes: CP - Control Plane DP - Data Plane UC - Unconfigured SA - Suppress ARP SU - Suppress Unknown Unicast Interface VNI Multicast-group State Mode Type [BD/VRF] Flags ----- nve1 900001 n/a Up CP L3 [vxlan-900001] nve1 2001001 239.0.0.1 Up CP L2 [1001] SA nve1 2001002 239.0.0.1 Up CP L2 [1000] SA leaf1# leaf1# sh vrf vxlan-900001 DETAIL VRF-Name: vxlan-900001, VRF-ID: 3, State: Up VFNID: unknown RD: 192.168.1.3:3 VNI: 900001, State: Up Max Routes: 0 Mid-Threshold: 0 Table-ID: 0x80000003, AF: IPv6, Fwd-ID: 0x80000003, State: Up Table-ID: 0x00000003, AF: IPv4, Fwd-ID: 0x00000003, State: Up</pre>
---	---	--

CONTROL PLANE LEARNING: Destination Prefix is 4.2.2.100 <====> 00c8.8bf9.5f41 <====> Vlan1000 <====> VNI2001002

<pre>Destination Prefix is learnt on host-connected LEAF 192.168.2.4 MultiteLeaf1# sh ip route 4.2.2.100 vrf vxlan-900001 IP Route Table for VRF "vxlan-900001" *** denotes best ucast next-hop *** denotes best mcast next-hop [x/y/z] denotes [preference/metric] %<string> in via output denotes VRF <string> 4.2.2.100/32, ubest/mbest: 1/0, attached *via 4.2.2.100, Vlan1000, [190/0], 4w2d, hhm MultiteLeaf1# sh bgp l2vpn evpn summary BGP summary information for VRF default, address family L2VPN EVPN BGP router identifier 192.168.2.4, local AS number 100 BGP table version is 56, L2VPN EVPN config peers 2, capable peers 2 36 network entries and 50 paths using 7968 bytes of memory BGP attribute entries (26/4160), BGP AS path entries (1/6) BGP community entries (0/0), BGP clusterlist entries (2/8) Neighbor V AS MsgRcvd MsgSent TblVer InQ OutQ Up/Down State/PfxRcd 192.168.2.1 4 100 44038 44029 56 0 0 4w2d 14 192.168.2.2 4 100 44037 44030 56 0 0 4w2d 14 MultiteLeaf1# MultiteLeaf1# sh nve peers Interface Peer-IP State LearnType Uptime Router-Mac ----- nve1 10.111.111.1 Up CP 4w2d 0200.0a6f.6f01 nve1 10.200.200.21 Up CP 4w2d n/a MultiteLeaf1# show nve vni Codes: CP - Control Plane DP - Data Plane UC - Unconfigured SA - Suppress ARP SU - Suppress Unknown Unicast MC - Crossconnect MS-IR - Multisite Ingress Replication Interface VNI Multicast-group State Mode Type [BD/VRF] Flags ----- nve1 900001 n/a Up CP L3 [vxlan-900001] nve1 2001001 239.0.0.1 Up CP L2 [1001] SA nve1 2001002 239.0.0.1 Up CP L2 [1000] SA MultiteLeaf1#</pre>	<pre>Host-Connected Leaf is advertising this prefix to its SPINE (192.168.2.1) MultiteLeaf1# sh bgp l2vpn evpn neighbors 192.168.2.1 advertised-routes Peer 192.168.2.1 routes for address family L2VPN EVPN: BGP table version is 56, Local Router ID is 192.168.2.4 Status: s-suppressed, x-deleted, S-stale, d-dampened, h-history, *-valid, >best Path type: i-internal, e-external, c-confed, l-local, a-aggregate, r-redist, I- njected Origin codes: i - IGP, e - EGP, ? - incomplete, ! - multipath, & - backup Network Next Hop Metric LocPrf Weight Path Route Distinguisher: 10.100.100.21:33767 Route Distinguisher: 10.100.100.21:33768 Route Distinguisher: 10.100.100.22:33767 Route Distinguisher: 10.100.100.22:33768 Route Distinguisher: 192.168.1.3:33767 Route Distinguisher: 192.168.1.3:33768 Route Distinguisher: 192.168.1.4:33767 Route Distinguisher: 192.168.1.4:33768 Route Distinguisher: 192.168.2.4:33767 (L2VNI 2001002) >>i(2):(0):(0):(48):(00c8.8bf9.5f41):(0):(0.0.0.0)/216 192.168.2.4 100 32768 i >>i(2):(0):(0):(48):(00c8.8bf9.5f41):(32):(4.2.2.100)/272 192.168.2.4 100 32768 i Route Distinguisher: 192.168.2.4:33768 (L2VNI 2001001) >>i(2):(0):(0):(48):(00c8.8bf9.5f42):(0):(0.0.0.0)/216 192.168.2.4 100 32768 i >>i(2):(0):(0):(48):(00c8.8bf9.5f42):(32):(4.1.1.100)/272 192.168.2.4 100 32768 i Route Distinguisher: 192.168.2.4:3 (L3VNI 900001) >>i(2):(0):(0):(48):(00c8.8bf9.5f42):(32):(4.1.1.100)/272 192.168.2.4 100 32768 i MultiteLeaf1#</pre>	<pre>SPINE is advertising the same prefix to Border Gateway (BG-2== 10.100.100.21) MultiteSpine1# sh bgp l2vpn evpn neighbors 10.100.100.21 advertised-routes Peer 10.100.100.21 routes for address family L2VPN EVPN: BGP table version is 26, Local Router ID is 192.168.2.1 Status: s-suppressed, x-deleted, S-stale, d-dampened, h-history, *-valid, >best Path type: i-internal, e-external, c-confed, l-local, a-aggregate, r-redist, I- njected Origin codes: i - IGP, e - EGP, ? - incomplete, ! - multipath, & - backup, 2 - b est2 Network Next Hop Metric LocPrf Weight Path Route Distinguisher: 10.100.100.21:27001 Route Distinguisher: 10.100.100.21:33767 Route Distinguisher: 10.100.100.21:33767 Route Distinguisher: 10.100.100.21:33767 Route Distinguisher: 10.100.100.22:33767 Route Distinguisher: 10.100.100.22:33768 Route Distinguisher: 192.168.1.3:33767 Route Distinguisher: 192.168.1.3:33768 Route Distinguisher: 192.168.1.4:33767 Route Distinguisher: 192.168.1.4:33768 Route Distinguisher: 192.168.2.4:33767 >>i(2):(0):(0):(48):(00c8.8bf9.5f41):(0):(0.0.0.0)/216 192.168.2.4 100 32768 i >>i(2):(0):(0):(48):(00c8.8bf9.5f41):(32):(4.2.2.100)/272 192.168.2.4 100 32768 i Route Distinguisher: 192.168.2.4:33768 >>i(2):(0):(0):(48):(00c8.8bf9.5f42):(0):(0.0.0.0)/216 192.168.2.4 100 32768 i >>i(2):(0):(0):(48):(00c8.8bf9.5f42):(32):(4.1.1.100)/272 192.168.2.4 100 32768 i Route Distinguisher: 192.168.2.4:3 (L3VNI 900001) >>i(2):(0):(0):(48):(00c8.8bf9.5f42):(32):(4.1.1.100)/272 192.168.2.4 100 32768 i MultiteSpine1#</pre>
---	---	---

eBGP Neighborship between Border Gateways

MultisiteBG2# sh bgp l2vpn evpn summary	MultisiteBG1# sh bgp l2vpn evpn summary
BGP summary information for VRF default, address family L2VPN EVPN BGP router identifier 10.100.100.21, local AS number 100 BGP table version is 60, L2VPN EVPN config peers 3, capable peers 3 43 network entries and 47 paths using 8160 bytes of memory BGP attribute entries [37/6068], BGP AS path entries [1/6] BGP community entries [0/0], BGP clusterlist entries [2/8]	BGP summary information for VRF default, address family L2VPN EVPN BGP router identifier 10.100.100.22, local AS number 200 BGP table version is 82, L2VPN EVPN config peers 3, capable peers 3 37 network entries and 45 paths using 7296 bytes of memory BGP attribute entries [37/6068], BGP AS path entries [1/6] BGP community entries [0/0], BGP clusterlist entries [4/16]
Neighbor V AS MsgRcvd MsgSent TblVer InQ OutQ Up/Down State/PfxRcd 10.100.100.22 4 200 44066 44039 60 0 0 4w2d 12 192.168.2.1 4 100 44050 44037 60 0 0 4w2d 4 192.168.2.2 4 100 44048 44037 60 0 0 4w2d 4	Neighbor V AS MsgRcvd MsgSent TblVer InQ OutQ Up/Down State/PfxRcd 10.100.100.21 4 100 44126 44106 82 0 0 4w2d 8 192.168.1.1 4 200 44122 44104 82 0 0 4w2d 8 192.168.1.2 4 200 44121 44104 82 0 0 4w2d 8
Neighbor T AS PfxRcd Type-2 Type-3 Type-4 Type-5 10.100.100.22 E 200 12 10 2 0 0 192.168.2.1 I 100 4 4 0 0 0 192.168.2.2 I 100 4 4 0 0 0	Neighbor T AS PfxRcd Type-2 Type-3 Type-4 Type-5 10.100.100.21 E 100 8 6 2 0 0 192.168.1.1 I 200 8 8 0 0 0 192.168.1.2 I 200 8 8 0 0 0
MultisiteBG2#	MultisiteBG1#
MultisiteBG2# sh bgp ipv4 unicast summary	MultisiteBG1# sh bgp ipv4 unicast summary
BGP summary information for VRF default, address family IPv4 Unicast BGP router identifier 10.100.100.21, local AS number 100 BGP table version is 11, IPv4 Unicast config peers 1, capable peers 1 7 network entries and 8 paths using 1800 bytes of memory BGP attribute entries [2/328], BGP AS path entries [1/6] BGP community entries [0/0], BGP clusterlist entries [2/8]	BGP summary information for VRF default, address family IPv4 Unicast BGP router identifier 10.100.100.22, local AS number 200 BGP table version is 11, IPv4 Unicast config peers 1, capable peers 1 7 network entries and 8 paths using 1692 bytes of memory BGP attribute entries [2/328], BGP AS path entries [1/6] BGP community entries [0/0], BGP clusterlist entries [4/16]
Neighbor V AS MsgRcvd MsgSent TblVer InQ OutQ Up/Down State/PfxRcd 10.52.21.2 4 200 44043 44041 11 0 0 4w2d 4	Neighbor V AS MsgRcvd MsgSent TblVer InQ OutQ Up/Down State/PfxRcd 10.52.21.1 4 100 44106 44105 11 0 0 4w2d 4
MultisiteBG2#	MultisiteBG1#
MultisiteBG2# sh bgp ipv4 unicast neighbors 10.52.21.2 advertised-routes	MultisiteBG1# show bgp ipv4 unicast neighbors 10.52.21.1 advertised-routes
Peer 10.52.21.2 routes for address family IPv4 Unicast: BGP table version is 11, Local Router ID is 10.100.100.21 Status: s-suppressed, x-deleted, S-stale, d-dampened, h-history, *-valid, >-best Path type: i-internal, e-external, c-confed, l-local, a-aggregate, r-redist, I-injected Origin codes: i - IGP, e - EGP, ? - incomplete, - multipath, & - backup, 2 - best2	Peer 10.52.21.1 routes for address family IPv4 Unicast: BGP table version is 11, Local Router ID is 10.100.100.22 Status: s-suppressed, x-deleted, S-stale, d-dampened, h-history, *-valid, >-best Path type: i-internal, e-external, c-confed, l-local, a-aggregate, r-redist, I-injected Origin codes: i - IGP, e - EGP, ? - incomplete, - multipath, & - backup, 2 - best2
Network Next Hop Metric LocPrf Weight Path >*r10.52.21.0/30 0.0.0.0 0 100 32768 ? >*r10.100.100.21/32 0.0.0.0 0 100 32768 ? >*r10.111.111.1/32 0.0.0.0 0 100 32768 ? >*r10.200.200.21/32 0.0.0.0 0 100 32768 ?	Network Next Hop Metric LocPrf Weight Path >*r10.52.21.0/30 0.0.0.0 0 100 32768 ? >*r10.100.100.22/32 0.0.0.0 0 100 32768 ? >*r10.111.111.2/32 0.0.0.0 0 100 32768 ? >*r10.200.200.22/32 0.0.0.0 0 100 32768 ?
MultisiteBG2#	MultisiteBG1#

Route exchange between Border Gateways (B.G-2 ==> B.G-1)	In DC-1, Route advertisement from BG-1 to SPINE-1
MultisiteBG2# sh bgp l2vpn evpn neighbors 10.100.100.22 advertised-routes	MultisiteBG1# sh bgp l2vpn evpn neighbors 192.168.1.1 advertised-routes
Peer 10.100.100.22 routes for address family L2VPN EVPN: BGP table version is 60, Local Router ID is 10.100.100.21 Status: s-suppressed, x-deleted, S-stale, d-dampened, h-history, *-valid, >-best Path type: i-internal, e-external, c-confed, l-local, a-aggregate, r-redist, I-injected Origin codes: i - IGP, e - EGP, ? - incomplete, - multipath, & - backup, 2 - best2	Peer 192.168.1.1 routes for address family L2VPN EVPN: BGP table version is 82, Local Router ID is 10.100.100.22 Status: s-suppressed, x-deleted, S-stale, d-dampened, h-history, *-valid, >-best Path type: i-internal, e-external, c-confed, l-local, a-aggregate, r-redist, I-injected Origin codes: i - IGP, e - EGP, ? - incomplete, - multipath, & - backup, 2 - best2
Network Next Hop Metric LocPrf Weight Path Route Distinguisher: 10.100.100.21:27001 (ES [0300.0000.0000.6400.0309 0]) >*l[4]:[0300.0000.0000.6400.0309]:[32]:[10.200.200.21]/136 10.200.200.21 100 32768 i Route Distinguisher: 10.100.100.21:33767 (L2VNI 2001002) >*l[2]:[0]:[0]:[48]:[005d.738e.a337]:[0]:[0.0.0.0]/216 10.200.200.21 100 32768 i >*l[3]:[0]:[32]:[10.200.200.21]/88 10.200.200.21 100 32768 i Route Distinguisher: 10.100.100.21:33768 (L2VNI 2001001) >*l[2]:[0]:[0]:[48]:[005d.738e.a337]:[0]:[0.0.0.0]/216 10.200.200.21 100 32768 i >*l[3]:[0]:[32]:[10.200.200.21]/88 10.200.200.21 100 32768 i Route Distinguisher: 10.100.100.22:33767 Route Distinguisher: 10.100.100.22:33768 (L2VNI 2001002) Route Distinguisher: 192.168.1.3:33767 Route Distinguisher: 192.168.1.3:33768 Route Distinguisher: 192.168.1.4:33767 Route Distinguisher: 192.168.1.4:33768 Route Distinguisher: 192.168.2.4:33767 >*i[2]:[0]:[0]:[48]:[00c8.8bf9.5f41]:[0]:[0.0.0.0]/216 192.168.2.4 100 0 i >*i[2]:[0]:[0]:[48]:[00c8.8bf9.5f41]:[32]:[4.2.2.100]/272 192.168.2.4 100 0 i Route Distinguisher: 192.168.2.4:33768 >*i[2]:[0]:[0]:[48]:[00c8.8bf9.5f42]:[0]:[0.0.0.0]/216 192.168.2.4 100 0 i >*i[2]:[0]:[0]:[48]:[00c8.8bf9.5f42]:[32]:[4.1.1.100]/272 192.168.2.4 100 0 i Route Distinguisher: 10.100.100.21:3 (L3VNI 900001) MultisiteBG2#	Network Next Hop Metric LocPrf Weight Path Route Distinguisher: 10.100.100.21:33767 >*e[2]:[0]:[0]:[48]:[005d.738e.a337]:[0]:[0.0.0.0]/216 10.200.200.21 0 100 i Route Distinguisher: 10.100.100.21:33768 >*e[2]:[0]:[0]:[48]:[005d.738e.a337]:[0]:[0.0.0.0]/216 10.200.200.21 0 100 i Route Distinguisher: 10.100.100.22:27001 (ES [0300.0000.0000.c800.0309 0]) >*l[4]:[0300.0000.0000.c800.0309]:[32]:[10.200.200.22]/136 10.200.200.22 100 32768 i Route Distinguisher: 10.100.100.22:33767 (L2VNI 2001002) >*l[2]:[0]:[0]:[48]:[6cb2.ae91.38bf]:[0]:[0.0.0.0]/216 10.200.200.22 100 32768 i >*l[3]:[0]:[32]:[10.200.200.22]/88 10.200.200.22 100 32768 i Route Distinguisher: 10.100.100.22:33768 (L2VNI 2001001) >*l[2]:[0]:[0]:[48]:[6cb2.ae91.38bf]:[0]:[0.0.0.0]/216 10.200.200.22 100 32768 i >*l[3]:[0]:[32]:[10.200.200.22]/88 10.200.200.22 100 32768 i Route Distinguisher: 192.168.1.3:33767 Route Distinguisher: 192.168.1.3:33768 Route Distinguisher: 192.168.1.4:33767 Route Distinguisher: 192.168.1.4:33768 Route Distinguisher: 192.168.2.4:33767 >*e[2]:[0]:[0]:[48]:[00c8.8bf9.5f41]:[0]:[0.0.0.0]/216 10.111.111.1 2000 0 100 i >*e[2]:[0]:[0]:[48]:[00c8.8bf9.5f41]:[32]:[4.2.2.100]/272 10.111.111.1 2000 0 100 i Route Distinguisher: 192.168.2.4:33768 >*e[2]:[0]:[0]:[48]:[00c8.8bf9.5f42]:[0]:[0.0.0.0]/216 10.111.111.1 2000 0 100 i >*e[2]:[0]:[0]:[48]:[00c8.8bf9.5f42]:[32]:[4.1.1.100]/272 10.111.111.1 2000 0 100 i MultisiteBG1#

CONTROL PLANE VERIFICATION AT DC-1 (Spine-1, Leaf-1): Destination Prefix is 4.2.2.100 <====> 00c8.8bf9.5f41 <====> Vlan1000 <====> VNI2001002

spine1# sh bgp ipv4 unicast summary

```
BGP summary information for VRF default, address family IPv4 Unicast
BGP router identifier 192.168.1.1, local AS number 200
BGP table version is 3, IPv4 Unicast config peers 3, capable peers 2
0 network entries and 0 paths using 0 bytes of memory
BGP attribute entries [0/0], BGP AS path entries [0/0]
BGP community entries [0/0], BGP clusterlist entries [0/0]
```

Neighbor	V	AS	MsgRcvd	MsgSent	TblVer	InQ	OutQ	Up/Down	State/PfxRcd
10.100.100.22	4	200	43997	43988	0	0	0	4w2d 0	(No Cap)
192.168.1.3	4	200	43986	43984	3	0	0	4w2d 0	
192.168.1.4	4	200	43990	43987	3	0	0	4w2d 0	

spine1# sh ip route 10.100.100.22

```
IP Route Table for VRF "default"
*** denotes best ucast next-hop
*** denotes best mcast next-hop
'[x/y]' denotes [preference/metric]
'*<string>' in via output denotes VRF <string>

10.100.100.22/32, ubest/mbest: 1/0
 *via 10.2.2.34, Eth1/1, [110/41], 4w2d, ospf-100, intra
spine1#
```

spine1# sh bgp l2vpn evpn summary

```
BGP summary information for VRF default, address family L2VPN EVPN
BGP router identifier 192.168.1.1, local AS number 200
BGP table version is 31, L2VPN EVPN config peers 3, capable peers 3
19 network entries and 19 paths using 4256 bytes of memory
BGP attribute entries [17/2788], BGP AS path entries [1/6]
BGP community entries [0/0], BGP clusterlist entries [0/0]
```

Neighbor	V	AS	MsgRcvd	MsgSent	TblVer	InQ	OutQ	Up/Down	State/PfxRcd
10.100.100.22	4	200	44002	43993	31	0	0	4w2d 11	
192.168.1.3	4	200	43991	43989	31	0	0	4w2d 4	
192.168.1.4	4	200	43996	43992	31	0	0	4w2d 4	

spine1# sh bgp l2vpn evpn 00c8.8bf9.5f41

```
BGP routing table information for VRF default, address family L2VPN EVPN
Route Distinguisher: 192.168.2.4:33767
BGP routing table entry for [2]:[0]:[0]:[48]:[00c8.8bf9.5f41]:[0]:[0.0.0.0]/216,
version 27
Paths: (1 available, best #1)
Flags: (0x000202) (high32 00000000) on xmit-list, is not in l2rib/evpn, is not i
n HW
Multipath: iBGP
```

```
Advertised path-id 1
Path type: internal, path is valid, is best path, no labeled nexthop
AS-Path: 100 , path sourced external to AS
10.111.111.2 (metric 41) from 10.100.100.22 (10.100.100.22)
Received label 2001002
Extcommunity: RT:200:2001002 ENCAP:8
```

```
Path-id 1 advertised to peers:
192.168.1.3 192.168.1.4
BGP routing table entry for [2]:[0]:[0]:[48]:[00c8.8bf9.5f41]:[32]:[4.2.2.100]/2
72, version 29
Paths: (1 available, best #1)
Flags: (0x000202) (high32 00000000) on xmit-list, is not in l2rib/evpn, is not i
n HW
Multipath: iBGP
```

```
Advertised path-id 1
Path type: internal, path is valid, is best path, no labeled nexthop
AS-Path: 100 , path sourced external to AS
10.111.111.2 (metric 41) from 10.100.100.22 (10.100.100.22)
Origin IGP, MED 2000, localpref 100, weight 0
Received label 2001002 900001
Extcommunity: RT:200:900001 RT:200:2001002 ENCAP:8 Router MAC:0200.0a6f.6f
2
```

```
Path-id 1 advertised to peers:
192.168.1.3 192.168.1.4
spine1#
```

leaf1# sh bgp l2vpn evpn summary

```
BGP summary information for VRF default, address family L2VPN EVPN
BGP router identifier 192.168.1.3, local AS number 200
BGP table version is 52, L2VPN EVPN config peers 2, capable peers 2
36 network entries and 50 paths using 4864 bytes of memory
BGP attribute entries [32/4408], BGP AS path entries [1/6]
BGP community entries [0/0], BGP clusterlist entries [4/16]
```

Neighbor	V	AS	MsgRcvd	MsgSent	TblVer	InQ	OutQ	Up/Down	State/PfxRcd
192.168.1.1	4	200	42565	42552	52	0	0	4w1d 14	
192.168.1.2	4	200	42565	42552	52	0	0	4w1d 14	

leaf1# show bgp ip unicast 4.2.2.100 vrf vxlan-900001

```
BGP routing table information for VRF vxlan-900001, address family IPv4 Unicast
BGP routing table entry for 4.2.2.100/32, version 7
Paths: (1 available, best #1)
Flags: (0x00041a) on xmit-list, is in urib, is best urib route, is in HW,
vgnl version 7, (0x100002) on xmit-list
```

```
Advertised path-id 1, VPN AF advertised path-id 1
Path type: internal, path is valid, is best path
Imported from 192.168.2.4:33767:[2]:[0]:[0]:[48]:[00c8.8bf9.5f41]:[
32]:[4.2.2.100]/272
AS-Path: 100 , path sourced external to AS
10.111.111.2 (metric 41) from 192.168.1.1 (192.168.1.1)
Origin IGP, MED 2000, localpref 100, weight 0
Received label 2001002 900001
Extcommunity:
RT:200:900001
RT:200:2001002
ENCAP:8
Router MAC:0200.0a6f.6f02
Originator: 10.100.100.22 Cluster list: 192.168.1.1
```

```
VRF advertise information:
Path-id 1 not advertised to any peer
VPN AF advertise information:
Path-id 1 not advertised to any peer
leaf1#
```

Reachability Verification from DC-1 Leaf-1

```
leaf1# show mac address-table | i 00c8.8bf9.5f41 | *Type
VLAN MAC Address Type age Secure NFFP Ports/SWID.SSID.LID
* 1000 00c8.8bf9.5f41 dynamic 0 F F vsw1/10.111.111.2
leaf1#
```

leaf1# show ip interface bri vrf all

```
IP Interface Status for VRF "default"(1)
Interface IP Address Interface Status
Lo0 192.168.1.3 protocol-up/link-up/admin-up
Eth1/18 1.1.1.1 protocol-down/link-down/admin-dc
Eth2/23 172.16.1.2 protocol-up/link-up/admin-up
Eth2/24 172.16.2.2 protocol-up/link-up/admin-up

IP Interface Status for VRF "management"(2)
Interface IP Address Interface Status
mgmt0 10.31.121.19 protocol-up/link-up/admin-up

IP Interface Status for VRF "vxlan-900001"(3)
Interface IP Address Interface Status
Vlan101 forward-enabled protocol-up/link-up/admin-up
Vlan1000 4.2.2.1 protocol-up/link-up/admin-up
Vlan1001 4.1.1.1 protocol-up/link-up/admin-up
leaf1#
```

leaf1# show ip route vrf vxlan-900001 4.2.2.100

```
IP Route Table for VRF "vxlan-900001"
*** denotes best ucast next-hop
*** denotes best mcast next-hop
'[x/y]' denotes [preference/metric]
'*<string>' in via output denotes VRF <string>

4.2.2.100/32, ubest/mbest: 1/0
 *via 10.111.111.2&default, [200/2000], 4w2d, bgp-200, internal, tag 100, (m
pls-vpn)seqid 900001 tunnel: 175075074 encap: 1
leaf1#
```

leaf1# traceroute 10.111.111.2

```
traceroute to 10.111.111.2 (10.111.111.2), 30 hops max, 40 byte packets
1 172.16.1.1 (172.16.1.1) 1.066 ms 0.816 ms 0.664 ms
2 10.111.111.2 (10.111.111.2) 1 ms 0.74 ms 0.693 ms
leaf1#
```

leaf1# show l2route evpn mac-ip evi 1000

Mac Address	Prod Host IP	Next Hop (s)
0035.lac1.3762.HMM	4.2.2.10	N/A
00c8.8bf9.5f41.BGP	4.2.2.100	10.111.111.2
e0d1.73a4.1d61.BGP	4.2.2.11	192.168.1.4

leaf1# show nve internal bgp rnh database | i Encap|10.111.111.2

VNI	Peer-IP	Peer-Mac	Tunnel-ID	Encap	(A/S)	Flags
900001	10.111.111.2	0200.0a6f.6f02	0xa6f6f02	vxlan	(1/0)	0
200100110.111.111.2	0000.0000.0000	0x0	vxlan	(1/0)	0	
200100210.111.111.2	0000.0000.0000	0x0	vxlan	(1/0)	0	

Host Reachability Verification from DC-1 to DC-2

```
ToLeaf1#show ip int br | e down
Interface IP-Address OK? Method Status Protocol
Vlan1000 4.2.2.10 YES NVRAM up up
Vlan1001 4.1.1.10 YES NVRAM up up
GigabitEthernet1/0/1 unassigned YES unset up up
ToLeaf1#
```

ToLeaf1#ping 4.2.2.100

```
Type escape sequence to abort.
Sending 5, 100-byte ICMP Echos to 4.2.2.100, timeout is 2 seconds:
!!!!
Success rate is 100 percent (5/5), round-trip min/avg/max = 1/4/9 ms
ToLeaf1#
```

ToLeaf1#show ip arp 4.2.2.100

Protocol	Address	Age (min)	Hardware Addr	Type	Interface
Internet	4.2.2.100	54	00c8.8bf9.5f41	ARPA	Vlan1000

toMultisiteLeaf1#sh ip interf bri | ex down

Interface	IP-Address	OK?	Method	Status	Protocol
Vlan1000	4.2.2.100	YES	NVRAM	up	up
Vlan1001	4.1.1.100	YES	NVRAM	up	up
GigabitEthernet2/0/1	unassigned	YES	unset	up	up

toMultisiteLeaf1#sh ip arp 4.2.2.100

Protocol	Address	Age (min)	Hardware Addr	Type	Interface
Internet	4.2.2.100	-	00c8.8bf9.5f41	ARPA	Vlan1000

```

Leaf-1 MAC Address Verification
leaf1# sh mac address-table vlan 1000
Legend:
 * - primary entry, G - Gateway MAC, (R) - Routed MAC, O - Overlay MAC
 age - seconds since last seen, + - primary entry using vPC Peer-Link
 VLAN   MAC Address   Type   age   Secure NTFY   Ports/SWID.SSID.LID
-----
 * 1000  0000.2222.3333  static 0      F F sup-eth2
 * 1000  0035.1a1c.37c2  dynamic 730    F F Eth1/23
 * 1000  005d.738e.a337  static 0      F F nve1/10.111.111.2
 * 1000  00c8.8bf9.5f41  dynamic 0      F F nve1/10.111.111.2
 * 1000  6cb2.ae91.38bf  static 0      F F nve1/10.200.200.22
 * 1000  e0d1.73a4.1d41  dynamic 0      F F nve1/192.168.1.4
leaf1#

leaf1# sh system internal l2rib event-history mac | i 0035.1a1c.37c2
[04/24/20 13:10:09.721 UTC 3 4173] Received MAC ROUTE msg: addr: (1000-0035.1a1c.37c2) vni: 0 admin_dist: 0 seq_num: 0 rt_flags: L soo: 0 dg_count: 0 res: 0 esi: (F) nh_count: 1
[04/24/20 13:10:09.721 UTC 6 4173] (1000,0035.1a1c.37c2,3):MAC route created with seq num:0, flags:L (), soo:0, peerid:0
[04/24/20 13:10:09.732 UTC c 4173] (1000,0035.1a1c.37c2,3):Encoding MAC best route (ADD, client id 4)
[04/24/20 13:10:09.871 UTC e 4173] (1000,0035.1a1c.37c2):Bound MAC-IP(4.2.2.10) to MAC, Total MAC-IP linked: 1

leaf1# show system internal l2rib event-history mac | i 0035.1a1c.37c3
[04/24/20 13:10:09.721 UTC 8 4173] Received MAC ROUTE msg: addr: (1001-0035.1a1c.37c3) vni: 0 admin_dist: 0 seq_num: 0 rt_flags: L soo: 0 dg_count: 0 res: 0 esi: (F) nh_count: 1
[04/24/20 13:10:09.721 UTC b 4173] (1001,0035.1a1c.37c3,3):MAC route created with seq num:0, flags:L (), soo:0, peerid:0
[04/24/20 13:10:09.732 UTC d 4173] (1001,0035.1a1c.37c3,3):Encoding MAC best route (ADD, client id 4)
[04/24/20 13:10:09.871 UTC f 4173] (1001,0035.1a1c.37c3):Bound MAC-IP(4.1.1.10) to MAC, Total MAC-IP linked: 1

leaf1# sh system internal l2rib event-history mac-ip | i 0035.1a1c.37c2
[04/24/20 13:10:09.871 UTC 2 4173] Received MAC-IP ROUTE msg: addr: (1000-0035.1a1c.37c2) host ip: 4.2.2.10 vni: 0 L3 info: 900001 rt_flags: 0 admin_dist: 7 seq_num: 0 soo: 0 nh_count: 0
[04/24/20 13:10:09.871 UTC 3 4173] (1000,0035.1a1c.37c2,4.2.2.10):MAC-IP entry created
[04/24/20 13:10:09.871 UTC 4 4173] (1000,0035.1a1c.37c2,4.2.2.10,12):MAC-IP route created with flags 0, L3 vrf 900001, seq 0, admin dist 7, soo 0
[04/24/20 13:10:09.882 UTC 9 4173] (1000,0035.1a1c.37c2,4.2.2.10,12):Encoding MAC-IP best route (ADD, client id 4)
leaf1#

leaf1# show system internal l2rib event-history mac-ip | i 0035.1a1c.37c3
[04/24/20 13:10:09.871 UTC 6 4173] Received MAC-IP ROUTE msg: addr: (1001-0035.1a1c.37c3) host ip: 4.1.1.10 vni: 0 L3 info: 900001 rt_flags: 0 admin_dist: 7 seq_num: 0 soo: 0 nh_count: 0
[04/24/20 13:10:09.871 UTC 7 4173] (1001,0035.1a1c.37c3,4.1.1.10):MAC-IP entry created
[04/24/20 13:10:09.871 UTC 8 4173] (1001,0035.1a1c.37c3,4.1.1.10,12):MAC-IP route created with flags 0, L3 vrf 900001, seq 0, admin dist 7, soo 0
[04/24/20 13:10:09.882 UTC a 4173] (1001,0035.1a1c.37c3,4.1.1.10,12):Encoding MAC-IP best route (ADD, client id 4)
leaf1#

```

故障排除

要排除故障，请参阅[排除多站点环境中的EVPN/VxLAN故障](#)

相关信息

- [VXLAN EVPN多站点设计和部署白皮书](#)
- [配置VXLAN EVPN多站点](#)

关于此翻译

思科采用人工翻译与机器翻译相结合的方式将此文档翻译成不同语言，希望全球的用户都能通过各自的语言得到支持性的内容。

请注意：即使是最好的机器翻译，其准确度也不及专业翻译人员的水平。

Cisco Systems, Inc. 对于翻译的准确性不承担任何责任，并建议您总是参考英文原始文档（已提供链接）。