

# 在Windows计算机和思科路由器之间设置L2TP隧道

## 目录

[简介](#)

[先决条件](#)

[要求](#)

[使用的组件](#)

[配置](#)

[网络图](#)

[配置](#)

[验证](#)

[故障排除](#)

[相关信息](#)

## 简介

本文档介绍如何在Windows计算机和Cisco路由器之间配置第2层隧道协议(L2TP)隧道。

## 先决条件

### 要求

Cisco建议您知道Windows计算机可以ping通路由器上的物理接口IP地址。

### 使用的组件

本文档不限于特定的软件和硬件版本。

本文档中的信息都是基于特定实验室环境中的设备编写的。本文档中使用的所有设备最初均采用原始(默认)配置。如果您使用的是真实网络,请确保您已经了解所有命令的潜在影响。

## 配置

### 网络图

本文档使用以下网络设置:



## 配置

### 聚合器配置：

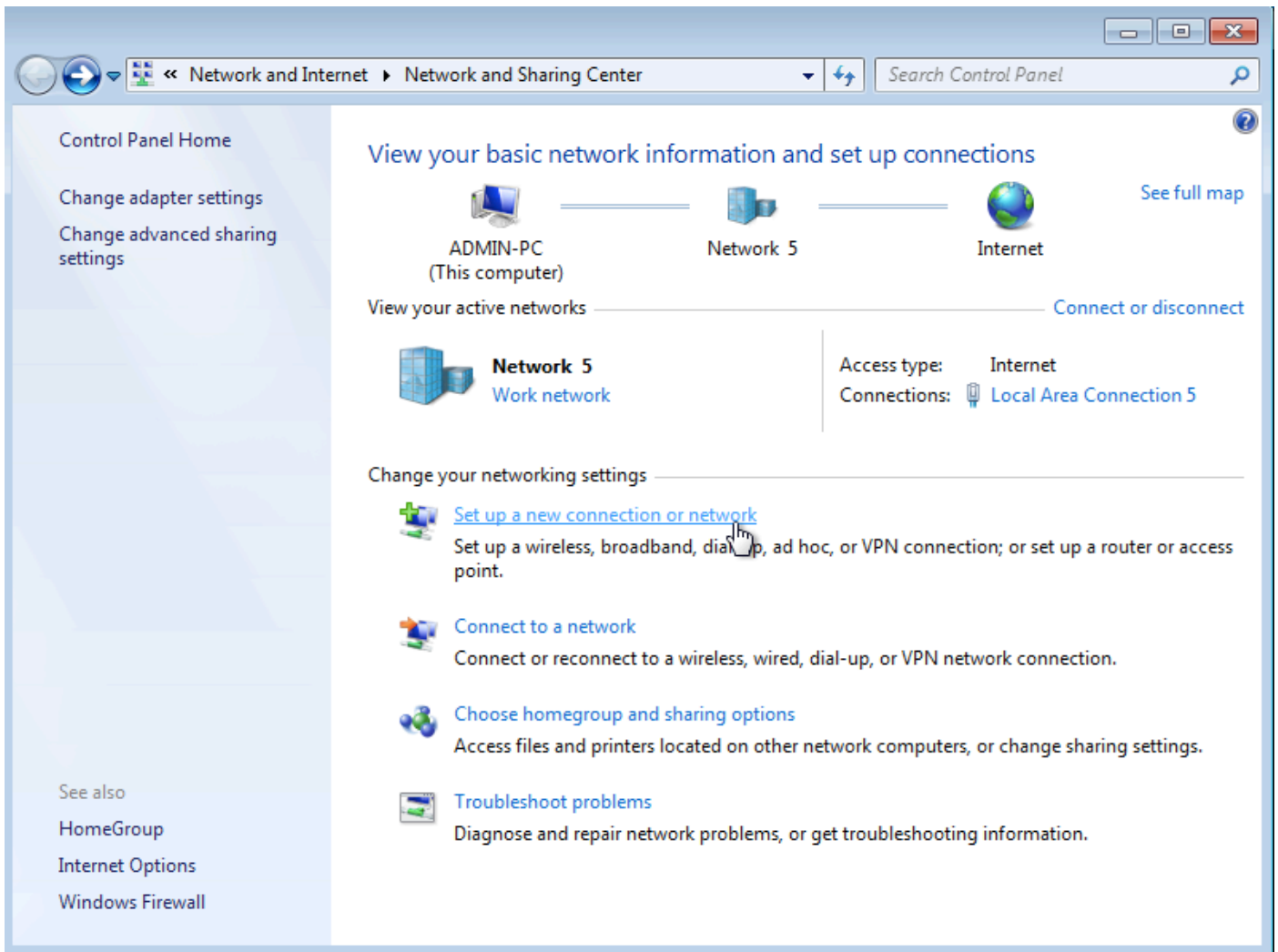
聚合器上的配置示例如图所示：

```
interface GigabitEthernet0/0/1
 ip address 192.168.1.1 255.255.255.0
 negotiation auto
end
interface Loopback100
 ip address 172.16.1.1 255.255.255.255
end
vpdn enable
vpdn-group 1
 ! Default L2TP VPDN group
 accept-dialin
 protocol l2tp
 virtual-template 1
no l2tp tunnel authentication interface Virtual-Templatel
 ip unnumbered Loopback100
 peer default ip address pool test
 ppp authentication chap callout
 ppp ipcp dns 4.2.2.1 4.2.2.2
end
 ip local pool test 10.1.1.2 10.1.1.100
```

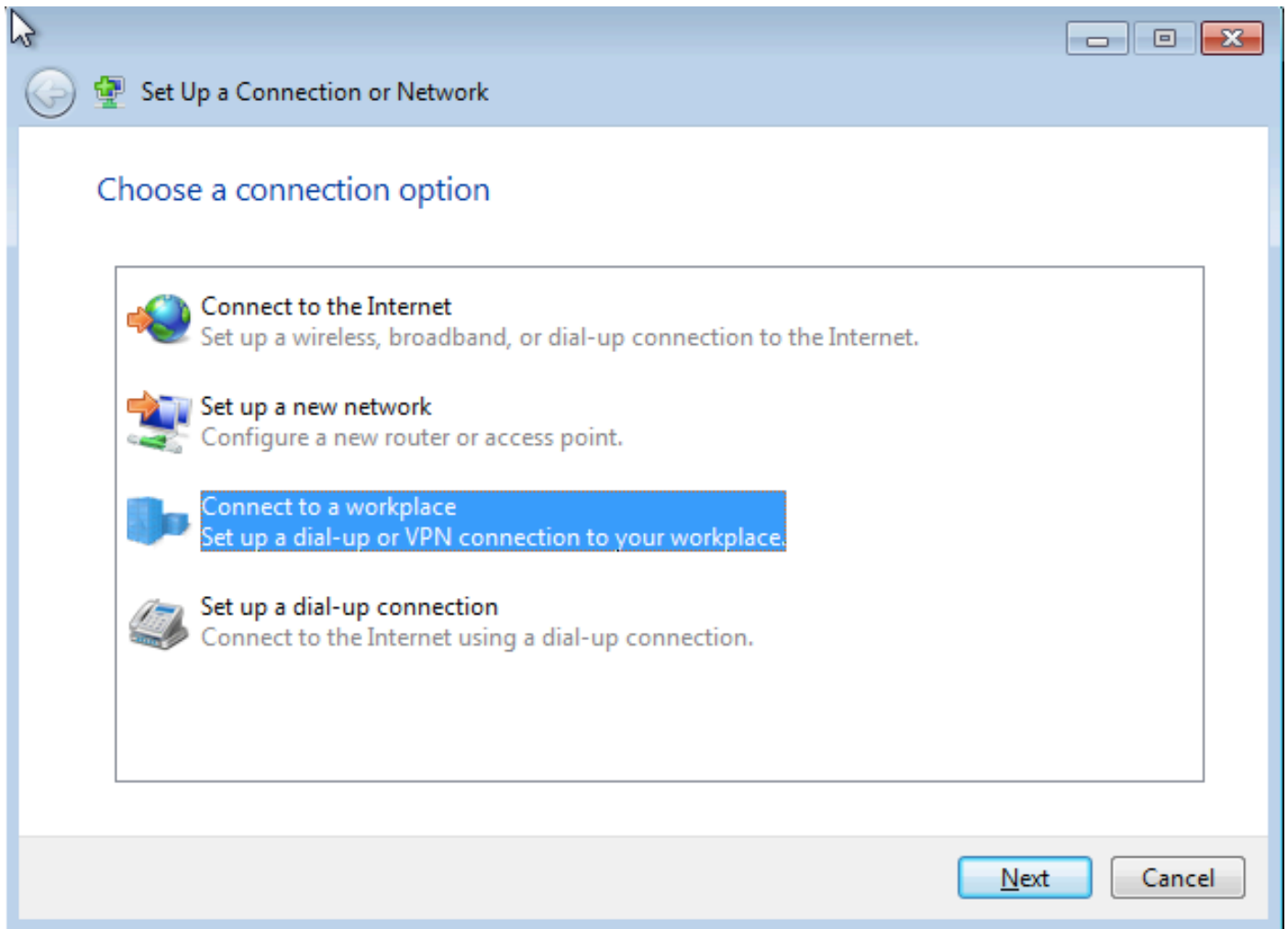
### Windows计算机配置和设置

请完成以下步骤：

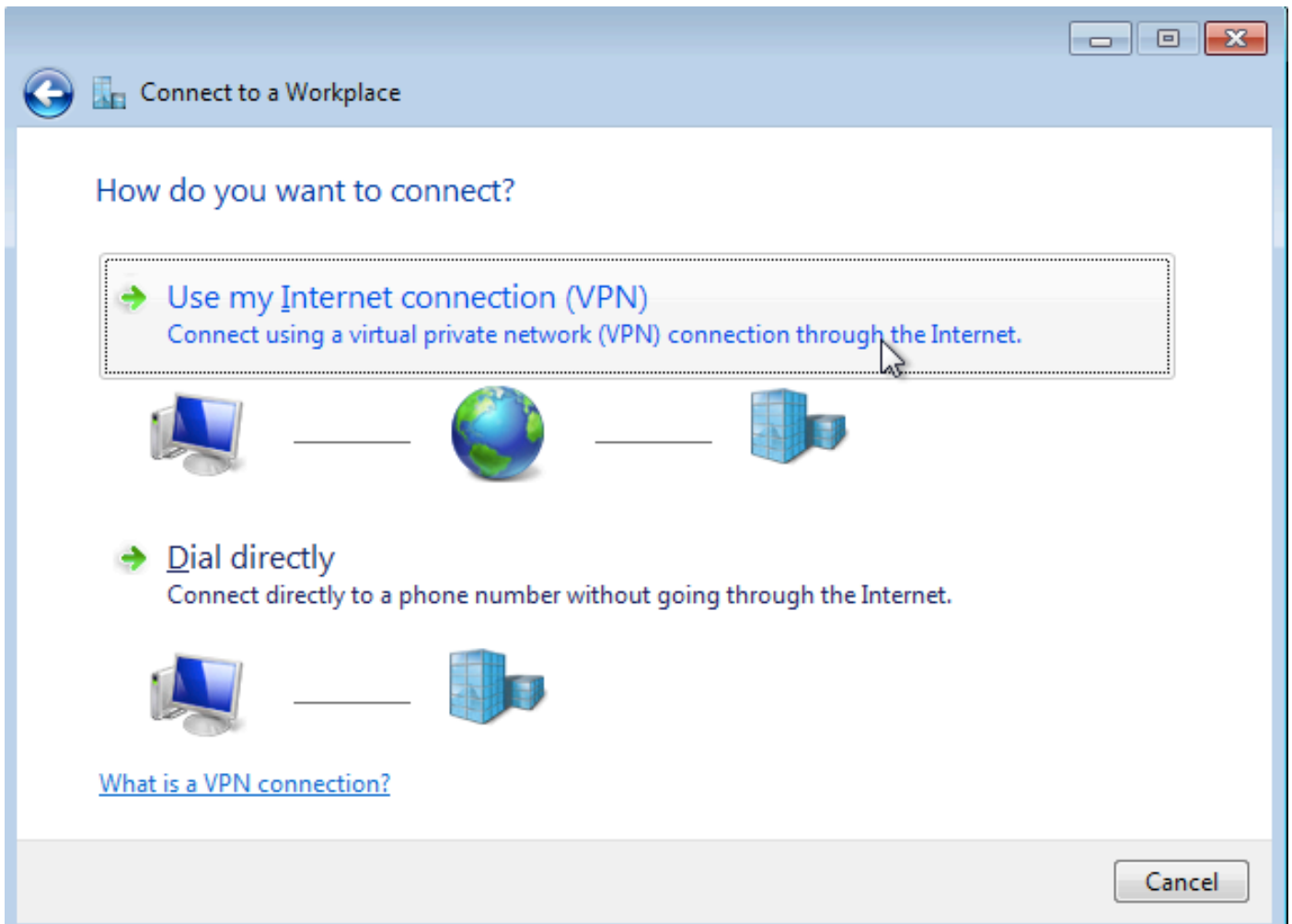
步骤1.打开网络和共享中心，然后单击“设置新连接或网络”，如下图所示。



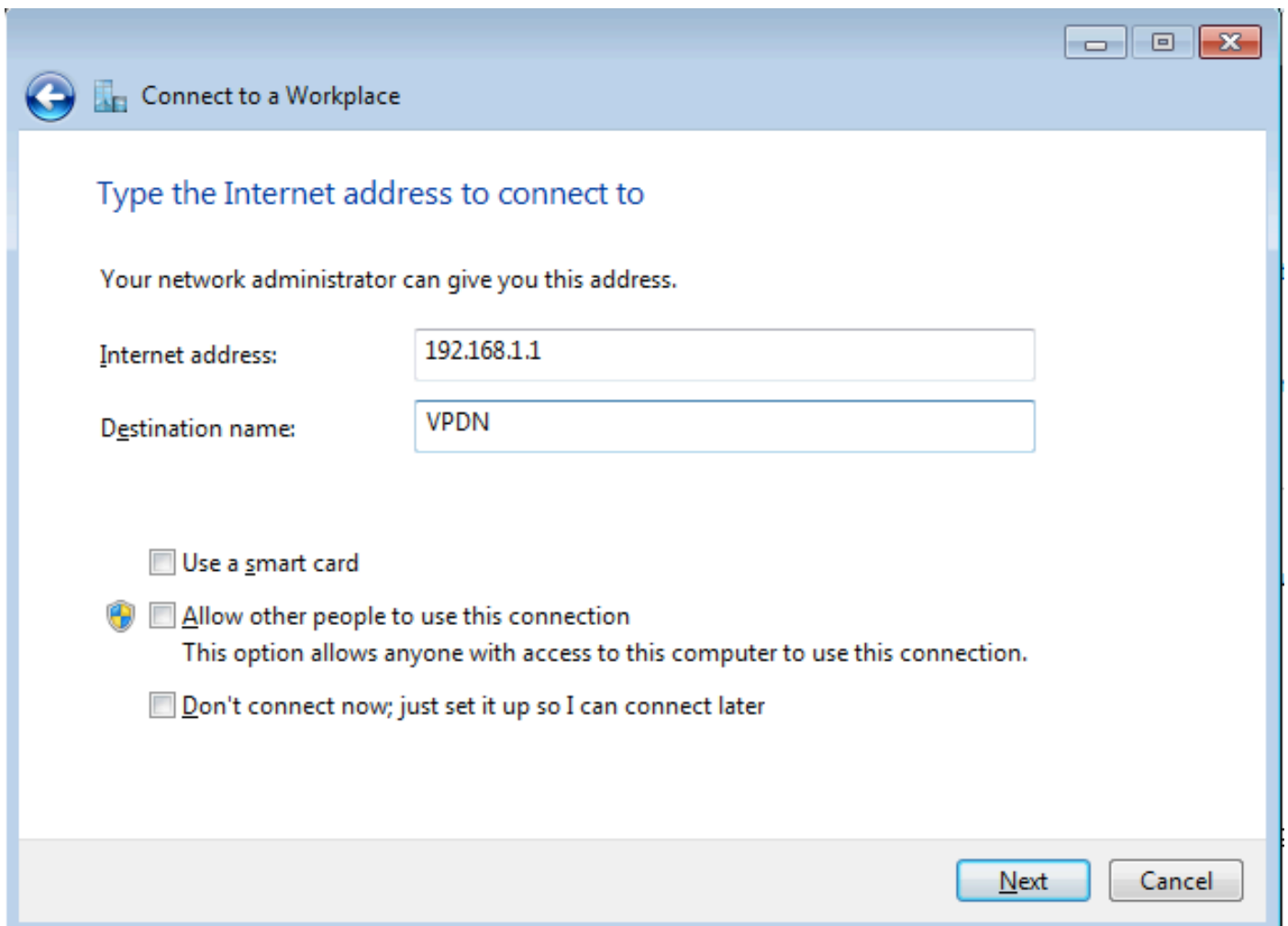
步骤2.选择“连接到工作区”，然后单击“下一步”



步骤3.选择Use my Internet Connection(VPN)



步骤4.输入聚合器的IP地址（在本例中为192.168.1.1），为连接指定一个名称（在本例中为VPDN命名），然后单击Next。



步骤5.输入用户名和密码，然后单击“连接”

Connect to a Workplace

Type your user name and password

User name: cisco

Password: ●●●●●

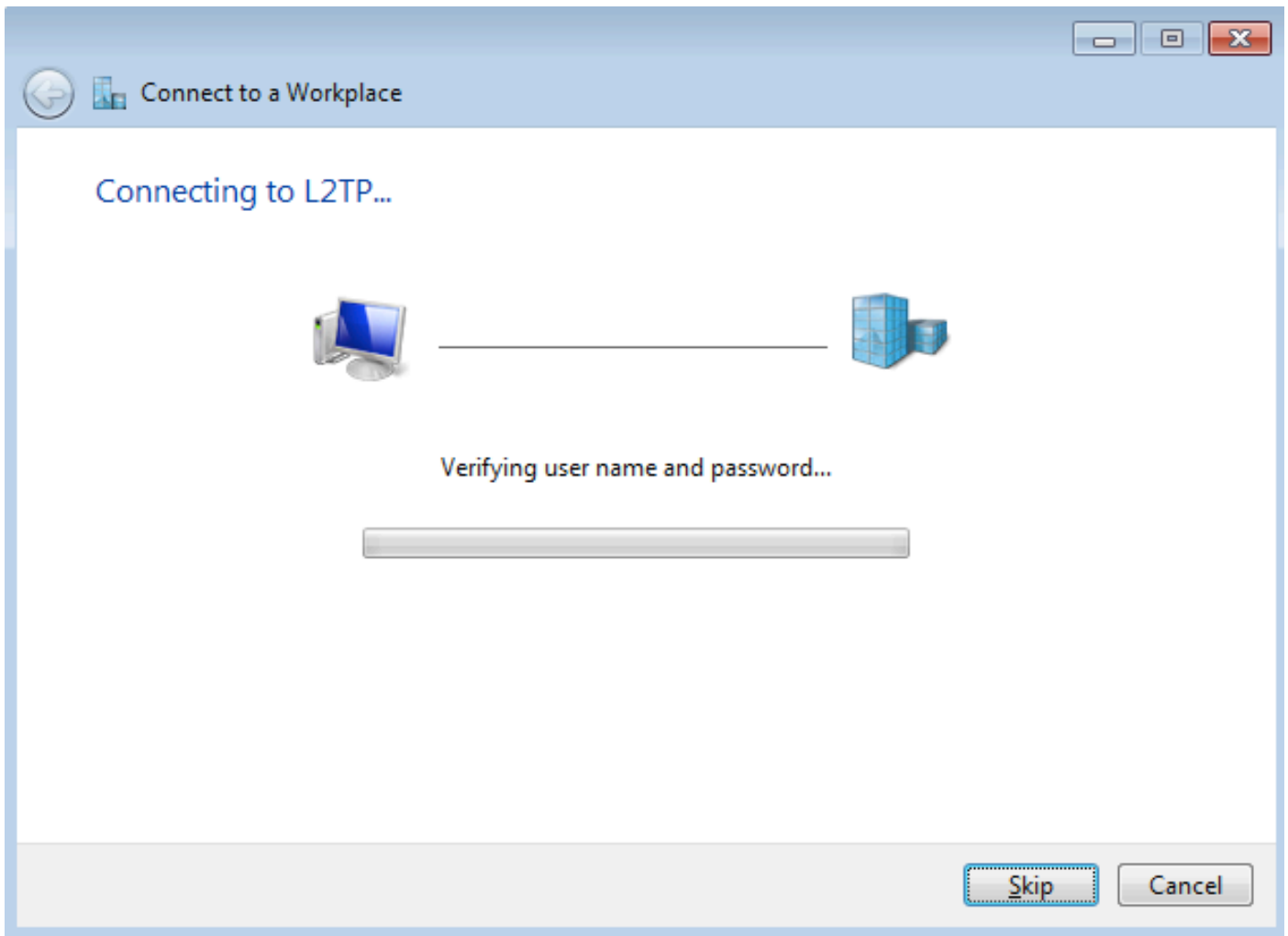
Show characters

Remember this password

Domain (optional):

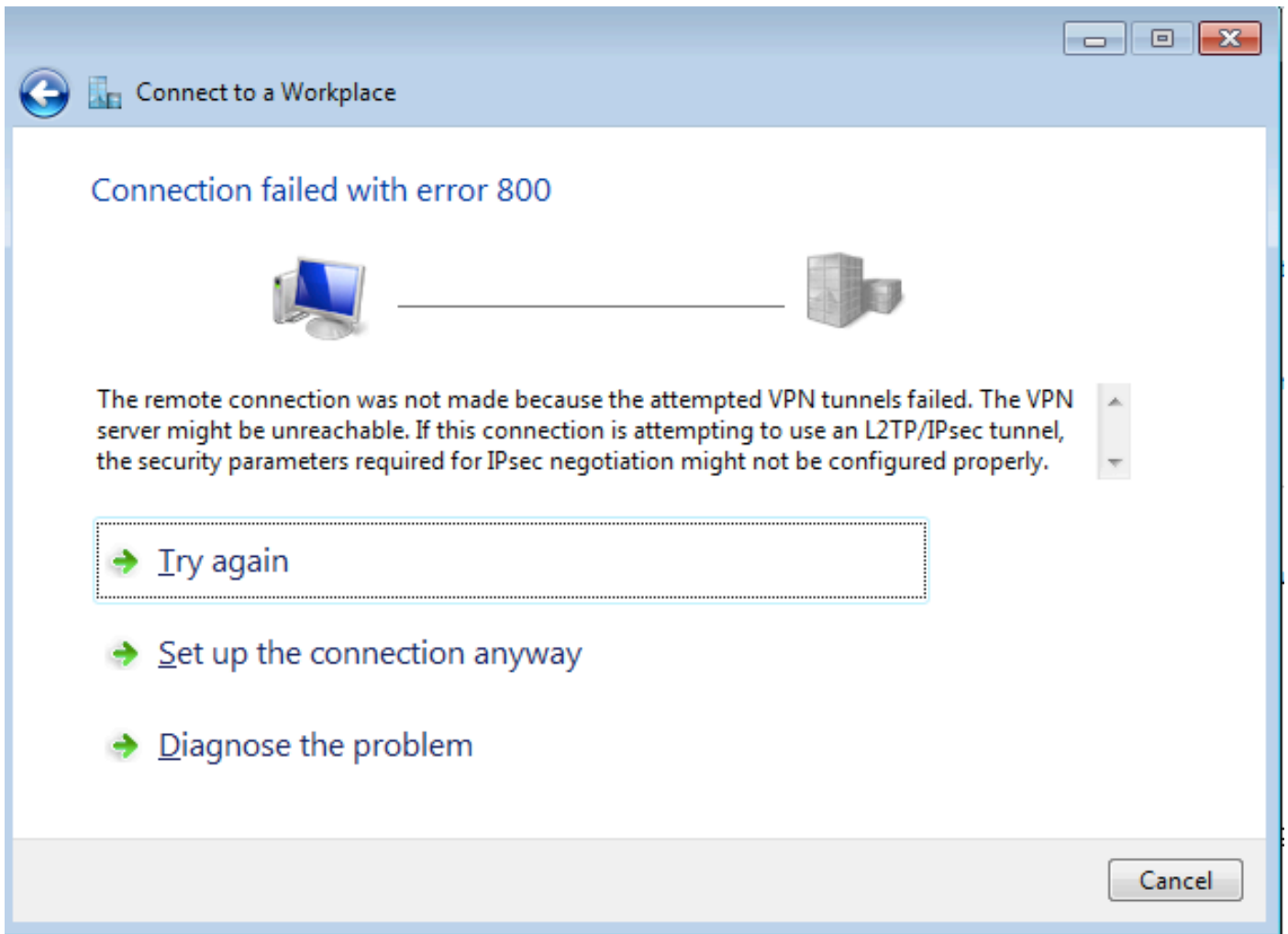
Connect Cancel

步骤6. 检验用户名和密码

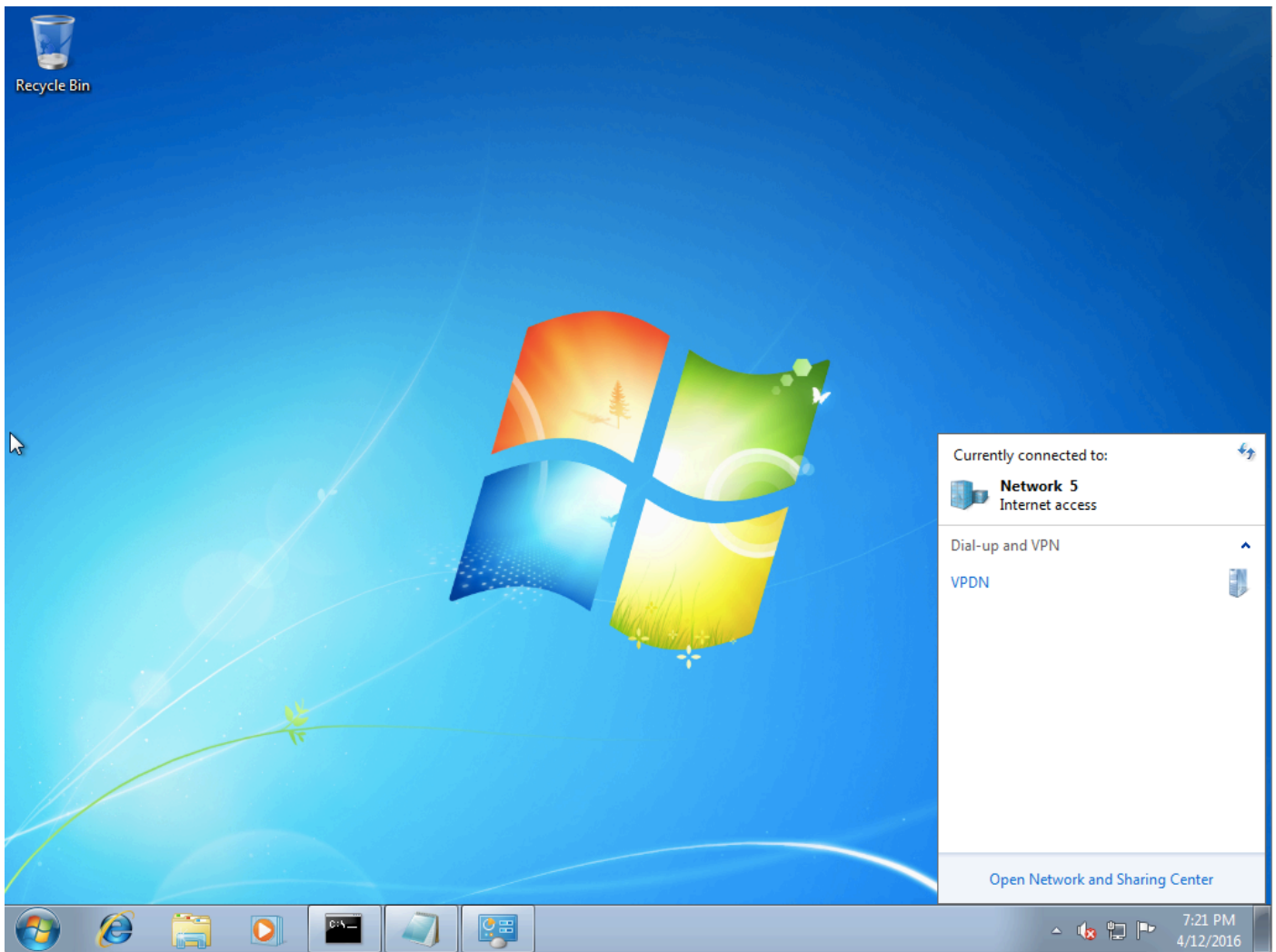


步骤7.它可能首次失败，如下图所示。

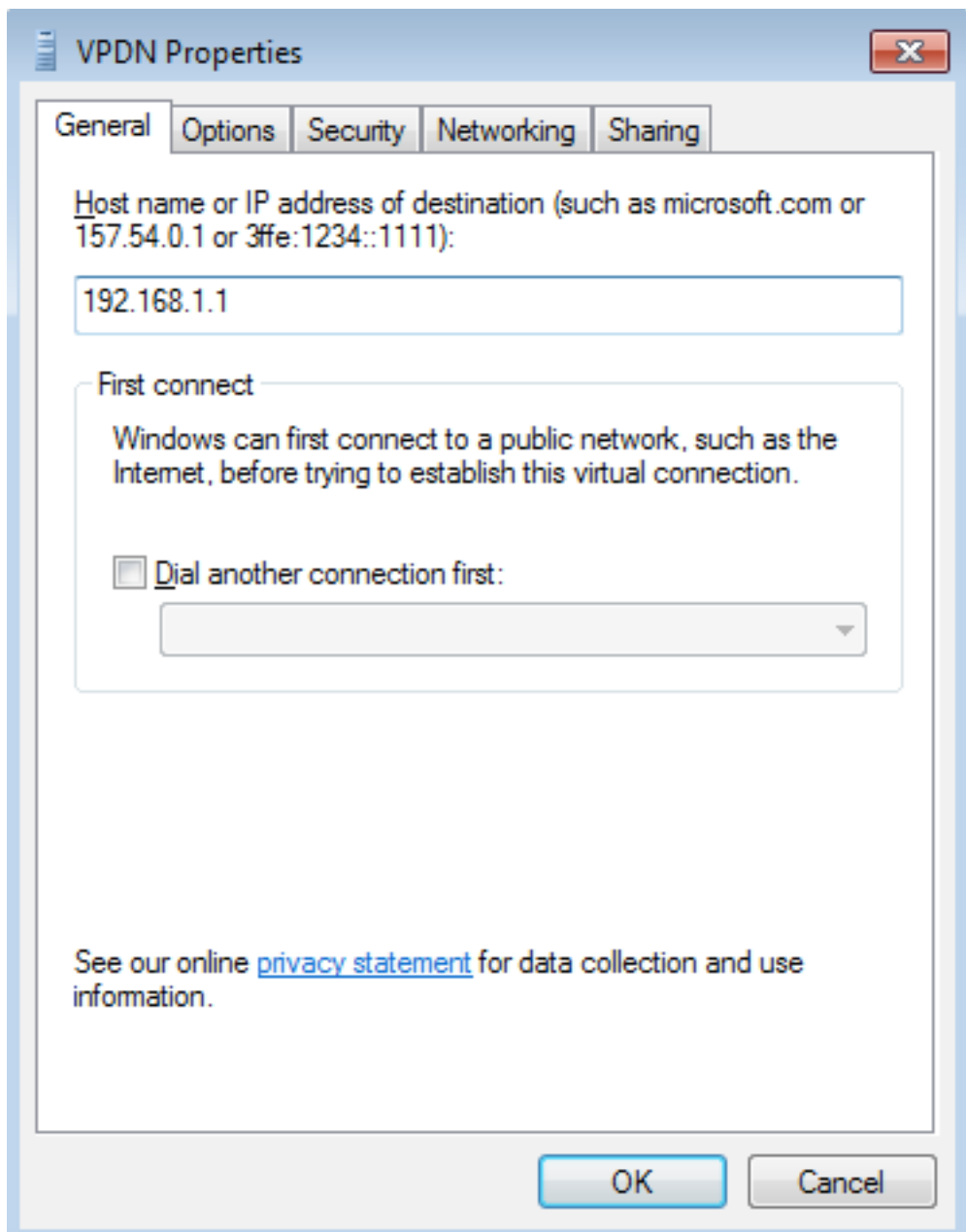




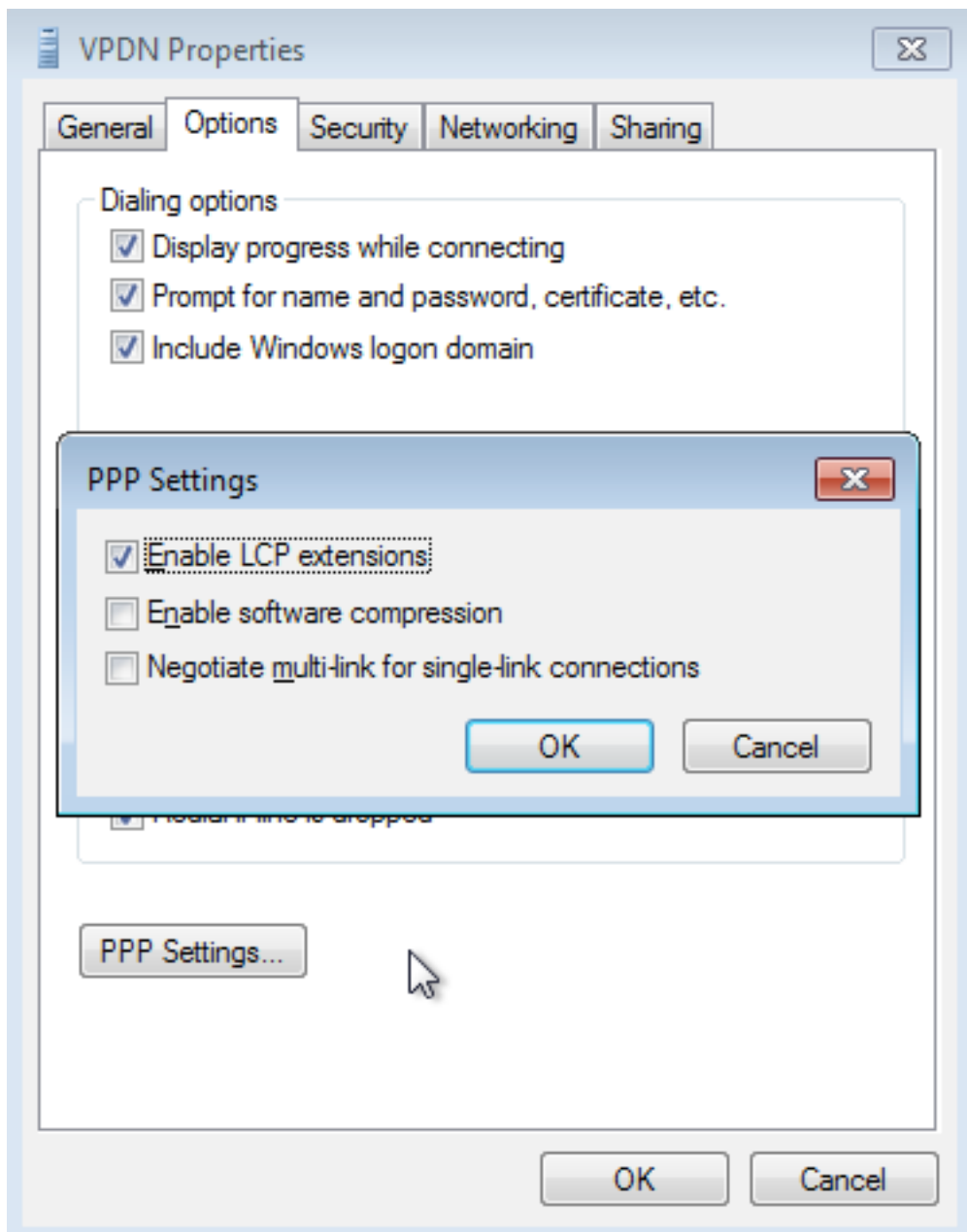
步骤8.单击“**仍然设置连接**”并打开“**网络**”选项卡。



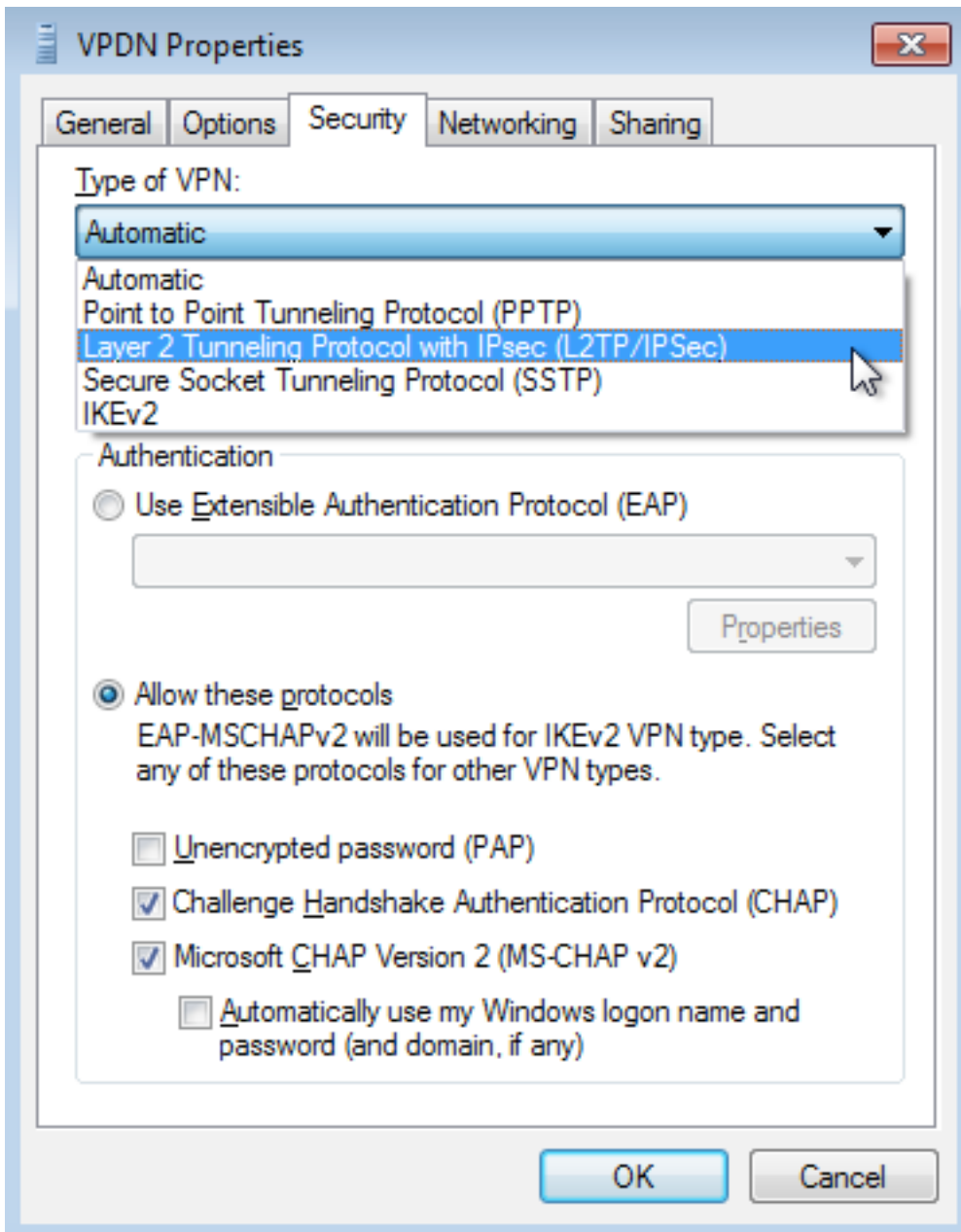
步骤9.右键单击连接（此处为VPDN），然后单击“属性”。检验聚合器的IP地址（此处为192.168.1.1）



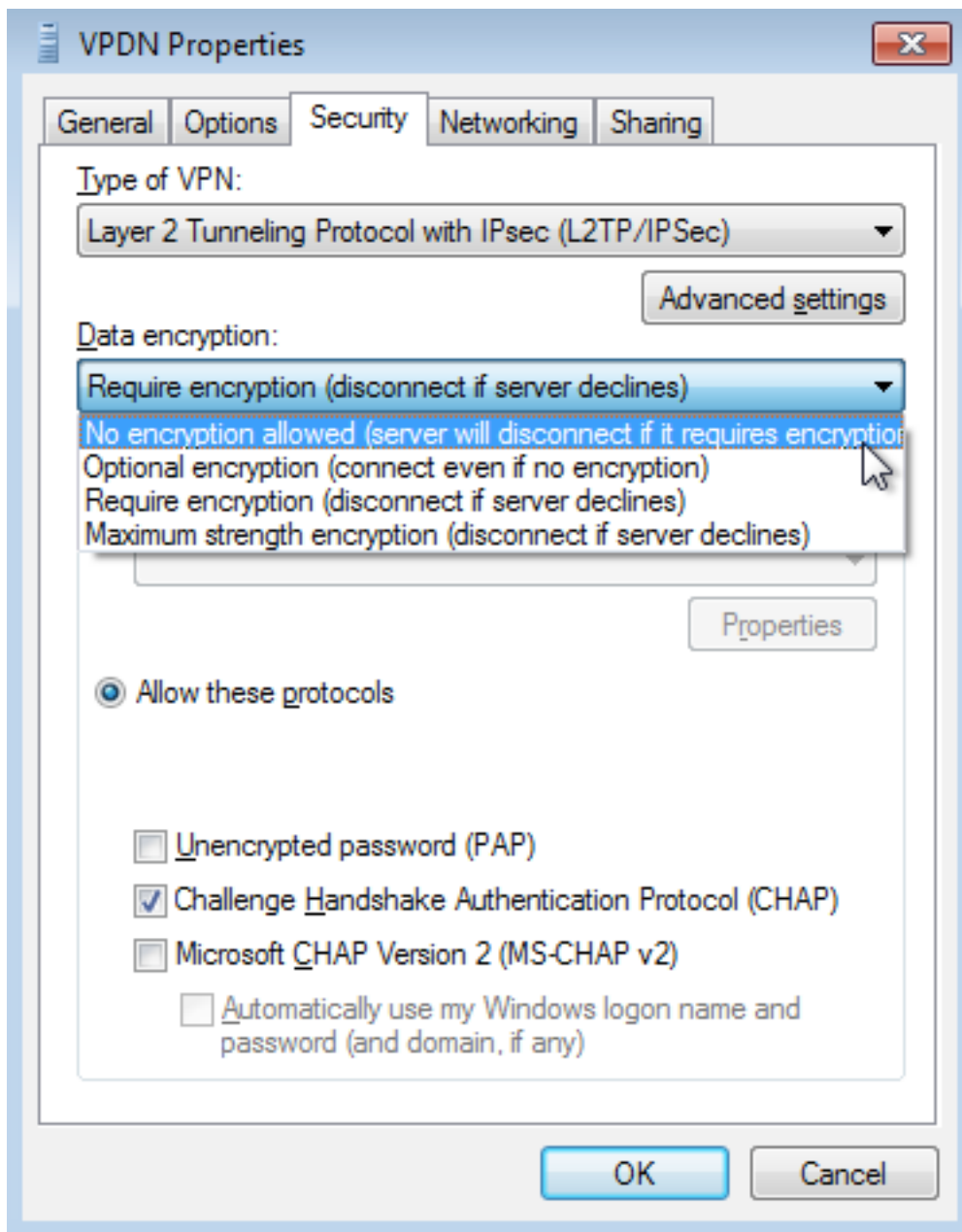
步骤10. 导航至选项 > PPP 设置并验证设置，如下图所示。



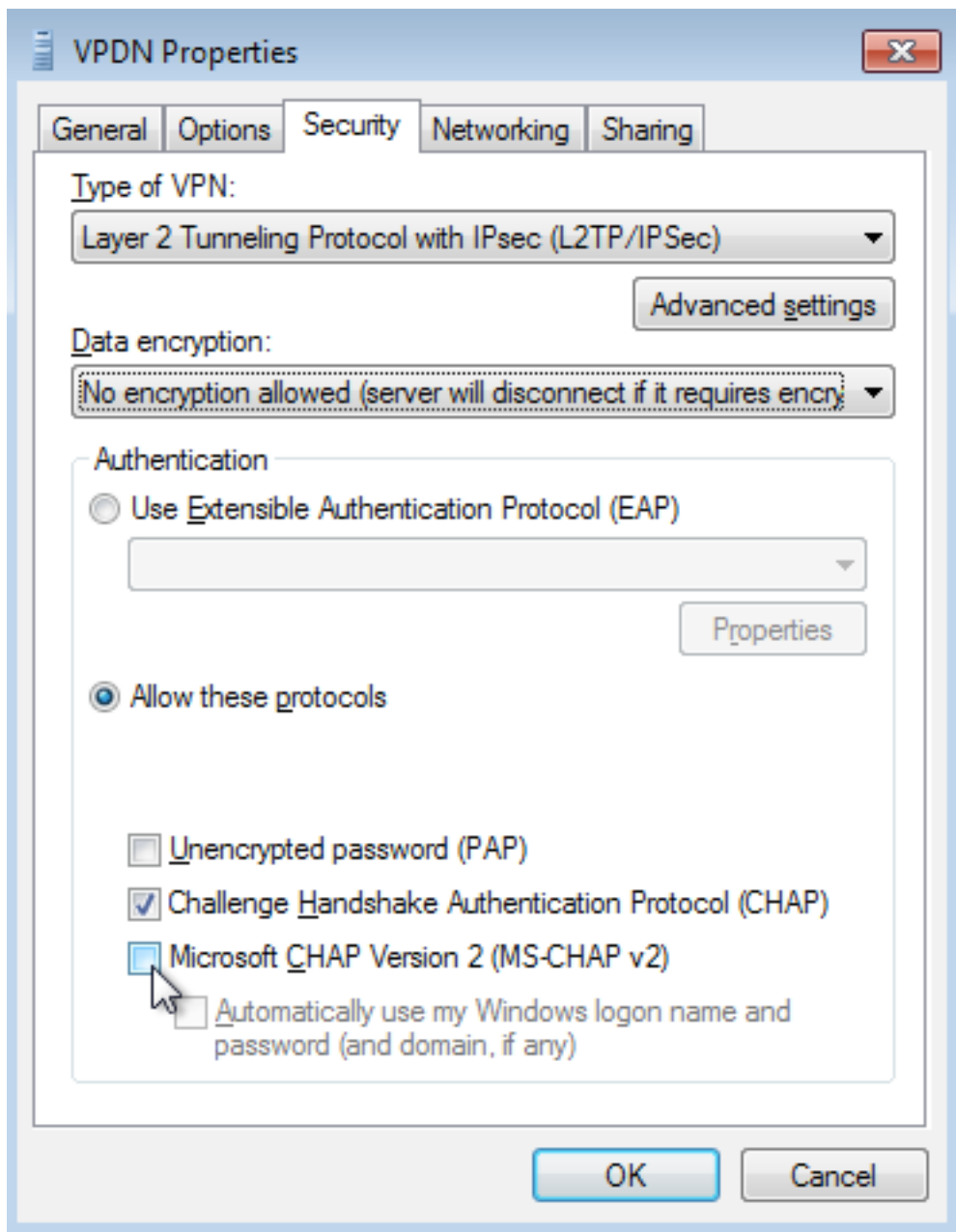
步骤11. 导航至 Security > Type of VPN > Layer 2 Tunneling Protocol with IPsec , 如下图所示。



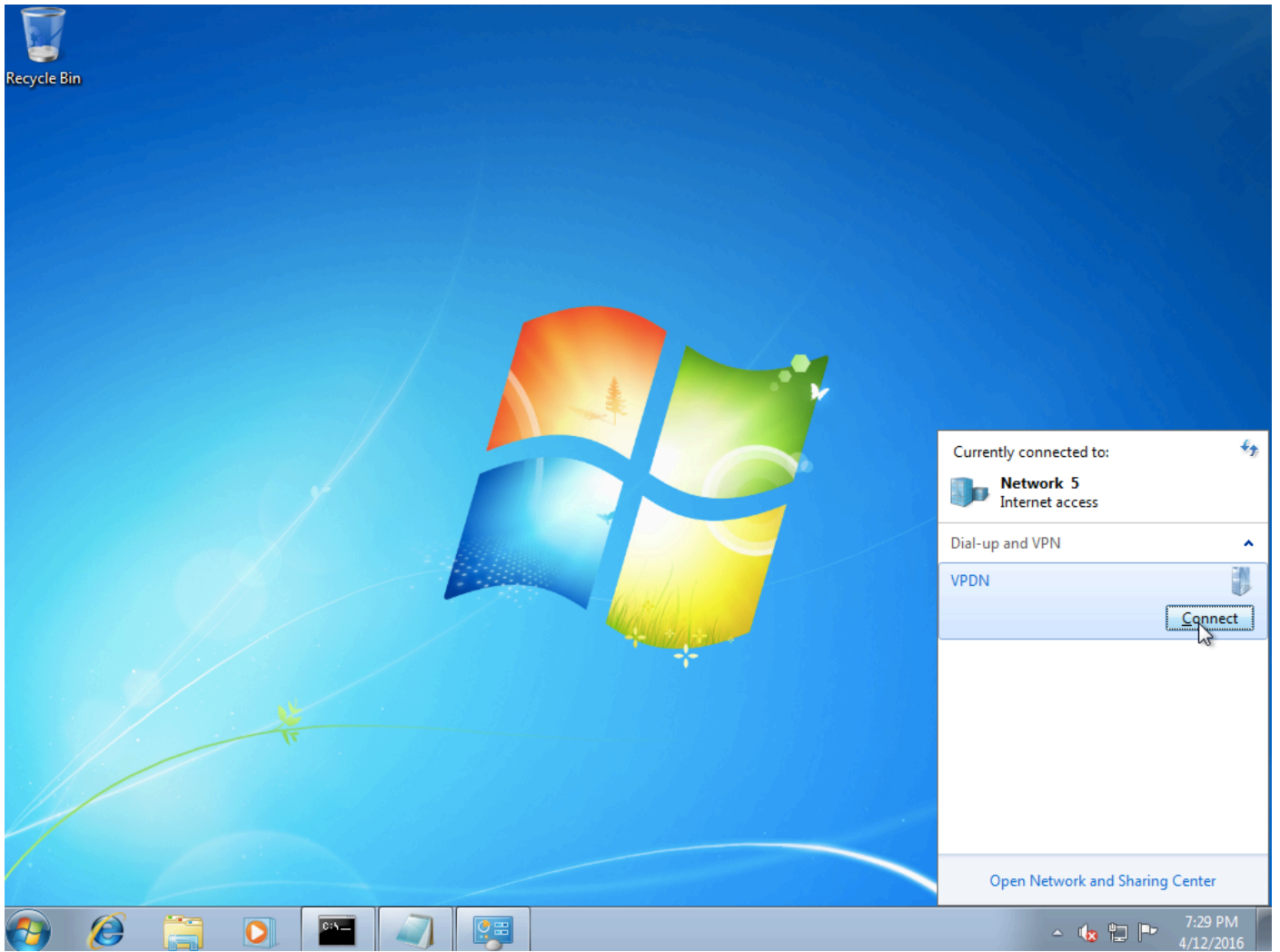
步骤12. 在“数据加密”下拉菜单下选择“不允许加密”选项：



步骤13.取消选中Microsoft CHAP版本2并单击确定。



步骤14.打开网络（此处为VPN），然后单击“连接”。



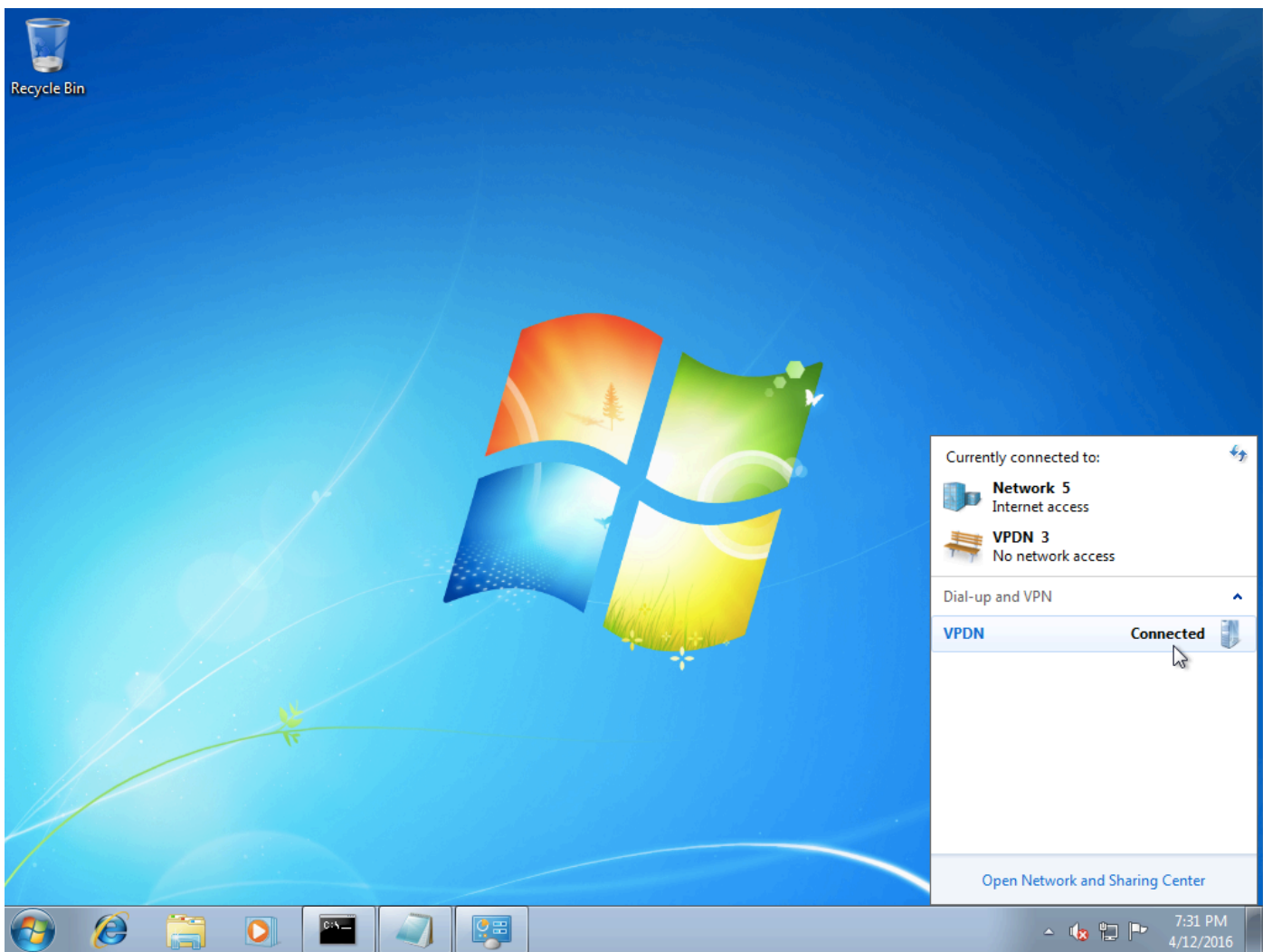
步骤15.输入用户名和密码，然后单击“连接”





## 验证

步骤1.再次打开**Networks**选项卡，选择网络（在本例中名为VPDN）并验证状态为Connected。



步骤2.打开命令提示符并运行ipconfig /all命令。

```
PPP adapter UPDN:
Connection-specific DNS Suffix . . . . . : UPDN
Description . . . . . : 
Physical Address . . . . . : 
DHCP Enabled. . . . . : No
Autoconfiguration Enabled . . . . . : Yes
IPv4 Address. . . . . : 10.1.1.9(Preferred)
Subnet Mask . . . . . : 255.255.255.255
Default Gateway . . . . . : 0.0.0.0
DNS Servers . . . . . : 4.2.2.1
                          4.2.2.2
NetBIOS over Tcpip. . . . . : Enabled
```

IPv4地址和域名服务器(DNS)由聚合器在完成PPP Internet协议控制协议(IPCP)阶段后分配。

步骤3.在聚合器上运行debug ppp negotiation 命令和其他show命令：

```
Aggregator#
*Apr 12 06:17:38.148: PPP: Alloc Context [38726D0C]
*Apr 12 06:17:38.148: ppp11 PPP: Phase is ESTABLISHING
*Apr 12 06:17:38.148: ppp11 PPP: Using vpn set call direction
*Apr 12 06:17:38.148: ppp11 PPP: Treating connection as a callin
*Apr 12 06:17:38.148: ppp11 PPP: Session handle[A600000B] Session id[11]
*Apr 12 06:17:38.148: ppp11 LCP: Event[OPEN] State[Initial to Starting]
```

```
*Apr 12 06:17:38.148: ppp11 PPP: No remote authentication for call-in
*Apr 12 06:17:38.148: ppp11 PPP LCP: Enter passive mode, state[Stopped]
*Apr 12 06:17:38.607: ppp11 LCP: I CONFREQ [Stopped] id 0 len 21
*Apr 12 06:17:38.607: ppp11 LCP: MRU 1400 (0x01040578)
*Apr 12 06:17:38.607: ppp11 LCP: MagicNumber 0x795C7CD1 (0x0506795C7CD1)
*Apr 12 06:17:38.607: ppp11 LCP: PFC (0x0702)
*Apr 12 06:17:38.607: ppp11 LCP: ACFC (0x0802)
*Apr 12 06:17:38.607: ppp11 LCP: Callback 6 (0x0D0306)
*Apr 12 06:17:38.608: ppp11 LCP: O CONFREQ [Stopped] id 1 len 10
*Apr 12 06:17:38.608: ppp11 LCP: MagicNumber 0xF7C3D2B9 (0x0506F7C3D2B9)
*Apr 12 06:17:38.608: ppp11 LCP: O CONFREQ [Stopped] id 0 len 7
*Apr 12 06:17:38.608: ppp11 LCP: Callback 6 (0x0D0306)
*Apr 12 06:17:38.608: ppp11 LCP: Event[Receive ConfReq-] State[Stopped to REQsent]
*Apr 12 06:17:38.615: ppp11 LCP: I CONFACK [REQsent] id 1 len 10
*Apr 12 06:17:38.615: ppp11 LCP: MagicNumber 0xF7C3D2B9 (0x0506F7C3D2B9)
*Apr 12 06:17:38.615: ppp11 LCP: Event[Receive ConfAck] State[REQsent to ACKrcvd]
*Apr 12 06:17:38.615: ppp11 LCP: I CONFREQ [ACKrcvd] id 1 len 18
*Apr 12 06:17:38.615: ppp11 LCP: MRU 1400 (0x01040578)
*Apr 12 06:17:38.615: ppp11 LCP: MagicNumber 0x795C7CD1 (0x0506795C7CD1)
*Apr 12 06:17:38.616: ppp11 LCP: PFC (0x0702)
*Apr 12 06:17:38.616: ppp11 LCP: ACFC (0x0802)
*Apr 12 06:17:38.616: ppp11 LCP: O CONFNAK [ACKrcvd] id 1 len 8
*Apr 12 06:17:38.616: ppp11 LCP: MRU 1500 (0x010405DC)
*Apr 12 06:17:38.616: ppp11 LCP: Event[Receive ConfReq-] State[ACKrcvd to ACKrcvd]
*Apr 12 06:17:38.617: ppp11 LCP: I CONFREQ [ACKrcvd] id 2 len 18
*Apr 12 06:17:38.617: ppp11 LCP: MRU 1400 (0x01040578)
*Apr 12 06:17:38.617: ppp11 LCP: MagicNumber 0x795C7CD1 (0x0506795C7CD1)
*Apr 12 06:17:38.617: ppp11 LCP: PFC (0x0702)
*Apr 12 06:17:38.617: ppp11 LCP: ACFC (0x0802)
*Apr 12 06:17:38.617: ppp11 LCP: O CONFNAK [ACKrcvd] id 2 len 8
*Apr 12 06:17:38.617: ppp11 LCP: MRU 1500 (0x010405DC)
*Apr 12 06:17:38.617: ppp11 LCP: Event[Receive ConfReq-] State[ACKrcvd to ACKrcvd]
*Apr 12 06:17:38.618: ppp11 LCP: I CONFREQ [ACKrcvd] id 3 len 18
*Apr 12 06:17:38.618: ppp11 LCP: MRU 1500 (0x010405DC)
*Apr 12 06:17:38.618: ppp11 LCP: MagicNumber 0x795C7CD1 (0x0506795C7CD1)
*Apr 12 06:17:38.618: ppp11 LCP: PFC (0x0702)
*Apr 12 06:17:38.618: ppp11 LCP: ACFC (0x0802)
*Apr 12 06:17:38.618: ppp11 LCP: O CONFACK [ACKrcvd] id 3 len 18
*Apr 12 06:17:38.618: ppp11 LCP: MRU 1500 (0x010405DC)
*Apr 12 06:17:38.618: ppp11 LCP: MagicNumber 0x795C7CD1 (0x0506795C7CD1)
*Apr 12 06:17:38.618: ppp11 LCP: PFC (0x0702)
*Apr 12 06:17:38.619: ppp11 LCP: ACFC (0x0802)
*Apr 12 06:17:38.619: ppp11 LCP: Event[Receive ConfReq+] State[ACKrcvd to Open]
*Apr 12 06:17:38.621: ppp11 LCP: I IDENTIFY [Open] id 4 len 18 magic 0x795C7CD1MSRASV5.20
*Apr 12 06:17:38.621: ppp11 LCP: I IDENTIFY [Open] id 5 len 24 magic 0x795C7CD1MSRAS-0-ADMIN-PC
*Apr 12 06:17:38.621: ppp11 LCP: I IDENTIFY [Open] id 6 len 24 magic 0x795C7CD1Z8Of(U3G.cIwR<#!
*Apr 12 06:17:38.626: ppp11 PPP: Queue IPV6CP code[1] id[7]
*Apr 12 06:17:38.626: ppp11 PPP: Queue IPCP code[1] id[8]
*Apr 12 06:17:38.640: ppp11 PPP: Phase is FORWARDING, Attempting Forward
*Apr 12 06:17:38.640: ppp11 LCP: State is Open
*Apr 12 06:17:38.657: Vi3.1 PPP: Phase is ESTABLISHING, Finish LCP
*Apr 12 06:17:38.657: Vi3.1 PPP: Phase is UP
*Apr 12 06:17:38.657: Vi3.1 IPCP: Protocol configured, start CP. state[Initial]
*Apr 12 06:17:38.657: Vi3.1 IPCP: Event[OPEN] State[Initial to Starting]
*Apr 12 06:17:38.657: Vi3.1 IPCP: O CONFREQ [Starting] id 1 len 10
*Apr 12 06:17:38.657: Vi3.1 IPCP: Address 172.16.1.1 (0x0306AC100101)
*Apr 12 06:17:38.657: Vi3.1 IPCP: Event[UP] State[Starting to REQsent]
*Apr 12 06:17:38.657: Vi3.1 PPP: Process pending ncp packets
*Apr 12 06:17:38.657: Vi3.1 IPCP: Redirect packet to Vi3.1
*Apr 12 06:17:38.657: Vi3.1 IPCP: I CONFREQ [REQsent] id 8 len 34
*Apr 12 06:17:38.657: Vi3.1 IPCP: Address 0.0.0.0 (0x030600000000)
*Apr 12 06:17:38.657: Vi3.1 IPCP: PrimaryDNS 0.0.0.0 (0x810600000000)
*Apr 12 06:17:38.657: Vi3.1 IPCP: PrimaryWINS 0.0.0.0 (0x820600000000)
*Apr 12 06:17:38.657: Vi3.1 IPCP: SecondaryDNS 0.0.0.0 (0x830600000000)
```

```

*Apr 12 06:17:38.657: Vi3.1 IPCP: SecondaryWINS 0.0.0.0 (0x840600000000)
*Apr 12 06:17:38.657: Vi3.1 IPCP AUTHOR: Done. Her address 0.0.0.0, we want 0.0.0.0
*Apr 12 06:17:38.657: Vi3.1 IPCP: Pool returned 10.1.1.9
*Apr 12 06:17:38.657: Vi3.1 IPCP: O CONFREQ [REQsent] id 8 len 16
*Apr 12 06:17:38.658: Vi3.1 IPCP: PrimaryWINS 0.0.0.0 (0x820600000000)
*Apr 12 06:17:38.658: Vi3.1 IPCP: SecondaryWINS 0.0.0.0 (0x840600000000)
*Apr 12 06:17:38.658: Vi3.1 IPCP: Event[Receive ConfReq-] State[REQsent to REQsent]
*Apr 12 06:17:38.658: Vi3.1 IPV6CP: Redirect packet to Vi3.1
*Apr 12 06:17:38.658: Vi3.1 IPV6CP: I CONFREQ [UNKNOWN] id 7 len 14
*Apr 12 06:17:38.658: Vi3.1 IPV6CP: Interface-Id F0AA:D7A4:5750:D93E (0x010AF0AAD7A45750D93E)
*Apr 12 06:17:38.658: Vi3.1 LCP: O PROTREQ [Open] id 2 len 20 protocol IPV6CP
(0x0107000E010AF0AAD7A45750D93E)
*Apr 12 06:17:38.672: Vi3.1 IPCP: I CONFACK [REQsent] id 1 len 10
*Apr 12 06:17:38.672: Vi3.1 IPCP: Address 172.16.1.1 (0x0306AC100101)
*Apr 12 06:17:38.672: Vi3.1 IPCP: Event[Receive ConfAck] State[REQsent to ACKrcvd]
*Apr 12 06:17:38.672: Vi3.1 IPCP: I CONFREQ [ACKrcvd] id 9 len 22
*Apr 12 06:17:38.672: Vi3.1 IPCP: Address 0.0.0.0 (0x030600000000)
*Apr 12 06:17:38.672: Vi3.1 IPCP: PrimaryDNS 0.0.0.0 (0x810600000000)
*Apr 12 06:17:38.672: Vi3.1 IPCP: SecondaryDNS 0.0.0.0 (0x830600000000)
*Apr 12 06:17:38.672: Vi3.1 IPCP: O CONFNAK [ACKrcvd] id 9 len 22
*Apr 12 06:17:38.672: Vi3.1 IPCP: Address 10.1.1.9 (0x03060A010109)
*Apr 12 06:17:38.672: Vi3.1 IPCP: PrimaryDNS 4.2.2.1 (0x810604020201)
*Apr 12 06:17:38.672: Vi3.1 IPCP: SecondaryDNS 4.2.2.2 (0x830604020202)
*Apr 12 06:17:38.672: Vi3.1 IPCP: Event[Receive ConfReq-] State[ACKrcvd to ACKrcvd]
*Apr 12 06:17:38.747: Vi3.1 IPCP: I CONFREQ [ACKrcvd] id 10 len 22
*Apr 12 06:17:38.747: Vi3.1 IPCP: Address 10.1.1.9 (0x03060A010109)
*Apr 12 06:17:38.747: Vi3.1 IPCP: PrimaryDNS 4.2.2.1 (0x810604020201)
*Apr 12 06:17:38.747: Vi3.1 IPCP: SecondaryDNS 4.2.2.2 (0x830604020202)
*Apr 12 06:17:38.747: Vi3.1 IPCP: O CONFACK [ACKrcvd] id 10 len 22
*Apr 12 06:17:38.748: Vi3.1 IPCP: Address 10.1.1.9 (0x03060A010109)
*Apr 12 06:17:38.748: Vi3.1 IPCP: PrimaryDNS 4.2.2.1 (0x810604020201)
*Apr 12 06:17:38.748: Vi3.1 IPCP: SecondaryDNS 4.2.2.2 (0x830604020202)
*Apr 12 06:17:38.748: Vi3.1 IPCP: Event[Receive ConfReq+] State[ACKrcvd to Open]
*Apr 12 06:17:38.768: Vi3.1 IPCP: State is Open
*Apr 12 06:17:38.769: Vi3.1 Added to neighbor route AVL tree: topoid 0, address 10.1.1.9
*Apr 12 06:17:38.769: Vi3.1 IPCP: Install route to 10.1.1.9

```

```
Aggregator#show caller ip
```

Line	User	IP Address	Local Number	Remote Number	<->
Vi3.1	-	10.1.1.9	-	-	in

```
Aggregator#show ip interface brief | exclude un
```

Interface	IP-Address	OK?	Method	Status	Protocol
GigabitEthernet0/0/1	192.168.1.1	YES	manual	up	up
Loopback100	172.16.1.1	YES	manual	up	up

步骤4.验证Windows计算机能否到达聚合器后的远程网络 (本例中为Loopback 100接口)

```

C:\Users\admin>ping 172.16.1.1

Pinging 172.16.1.1 with 32 bytes of data:
Reply from 172.16.1.1: bytes=32 time=1ms TTL=255
Reply from 172.16.1.1: bytes=32 time<1ms TTL=255
Reply from 172.16.1.1: bytes=32 time<1ms TTL=255
Reply from 172.16.1.1: bytes=32 time<1ms TTL=255

Ping statistics for 172.16.1.1:
    Packets: Sent = 4, Received = 4, Lost = 0 (0% loss),
    Approximate round trip times in milli-seconds:
        Minimum = 0ms, Maximum = 1ms, Average = 0ms

```

## 故障排除

目前没有针对此配置故障排除信息。

## 相关信息

- [了解 VPDN](#)
- [T技术支持和文档 — Cisco Systems](#)