

Exemplo de autenticação EAP de servidor RADIUS externo com configuração de WLC 5760/3850

Contents

[Introduction](#)

[Prerequisites](#)

[Requirements](#)

[Componentes Utilizados](#)

[Configurar](#)

[Diagrama de Rede](#)

[Overview](#)

[Configurar o WLC 5760/3850 com CLI](#)

[Configurar o WLC 5760/3850 com GUI](#)

[Configurar o ACS 5.2 \(servidor RADIUS\)](#)

[Verificar](#)

[Troubleshoot](#)

Introduction

Este documento explica como configurar a controladora Wireless LAN (WLAN) (WLC) para Autenticação Flexível EAP (Extensible Authentication Protocol) via autenticação FAST (Secure Tunneling) com o uso de um servidor RADIUS externo. Este exemplo de configuração usa o Cisco Secure Access Control Server (ACS) como o servidor RADIUS externo para autenticar o cliente sem fio.

Prerequisites

Requirements

A Cisco recomenda que você tenha conhecimento destes tópicos:

- Conhecimento básico da configuração de pontos de acesso lightweight (LAPs), Cisco 5760 Wireless LAN Controller e Cisco Catalyst 3850 Series Switch.
- Conhecimento básico do Lightweight Access Point Protocol (LWAPP).
- Conhecimento de como configurar um servidor RADIUS externo, como o Cisco Secure ACS 5.2. Este exemplo de configuração é para EAP-FAST.

- Conhecimento funcional sobre a estrutura geral do EAP.
- Conhecimento básico de protocolos de segurança, como o Microsoft Challenge Handshake Authentication Protocol Version 2 (MS-CHAPv2) e EAP-Generic Token Card (EAP-GTC).
- Conhecimento básico de certificados digitais.

Componentes Utilizados

As informações neste documento são baseadas nestas versões de software e hardware:

- Cisco Wireless LAN Controller 5760 versão 3.2.2 (Next Generation Wiring Closet [NGWC])
- Access Point Lightweight Cisco 3602 Series
- Microsoft Windows XP com Intel PROset Supplicant
- Cisco Secure Access Control Server versão 5.2
- Switch Cisco Catalyst 3560 Series

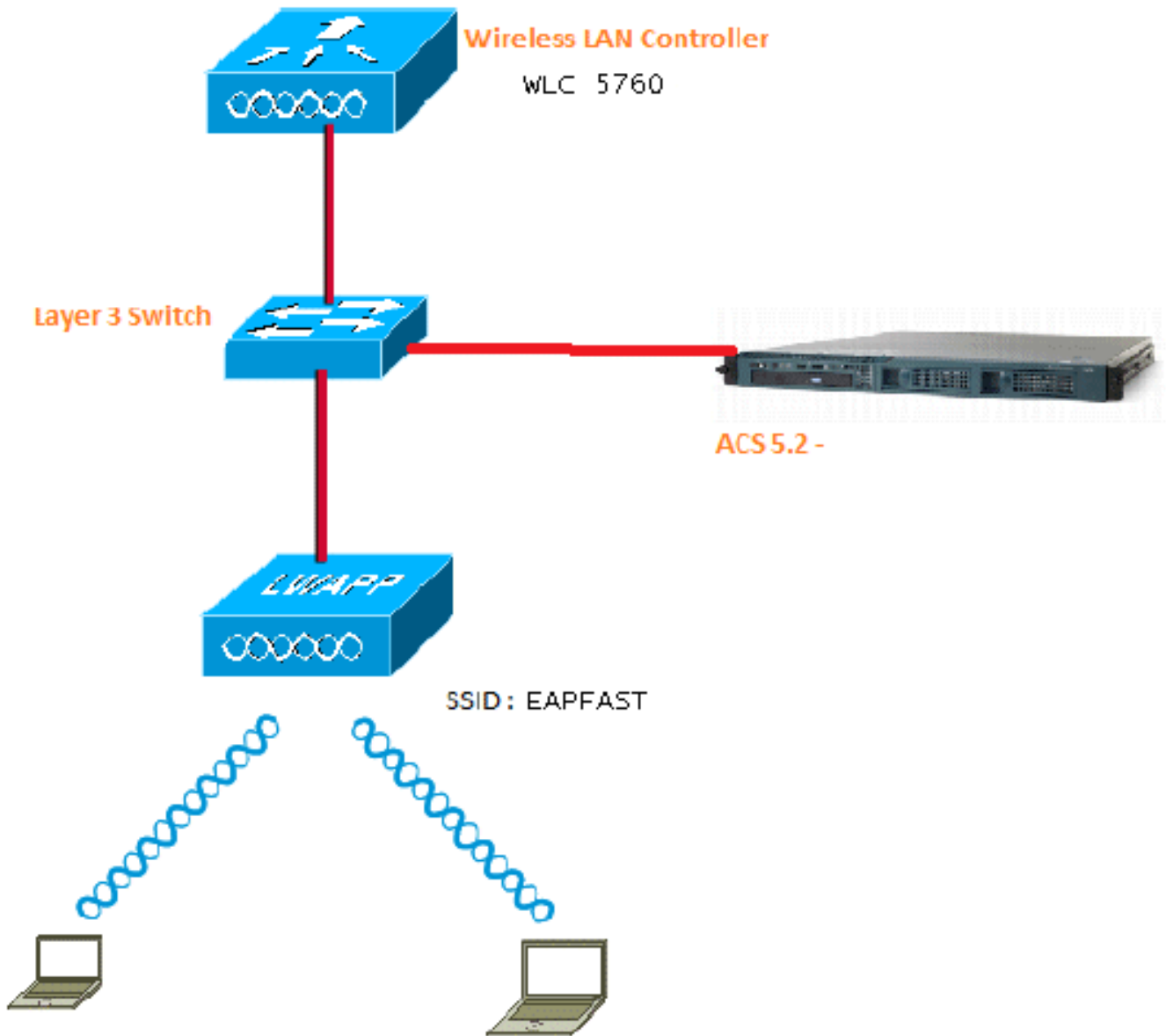
The information in this document was created from the devices in a specific lab environment. All of the devices used in this document started with a cleared (default) configuration. If your network is live, make sure that you understand the potential impact of any command.

Configurar

Note: Use a [Command Lookup Tool \(somente clientes registrados\) para obter mais informações sobre os comandos usados nesta seção.](#)

Diagrama de Rede

A imagem fornece um exemplo de um diagrama de rede:



Overview

Essa configuração é feita em duas etapas.

1. Configure o WLC 5760/3850 com a interface de linha de comando (CLI) ou GUI.
2. Configure o ACS 5.2 (servidor RADIUS).

Configurar o WLC 5760/3850 com CLI

Este procedimento descreve como usar a CLI para configurar a WLAN para a VLAN de cliente necessária e mapeá-la para a lista de métodos de autenticação:

```
wlan EAPFAST 4 EAPFAST
client vlan VLAN0020
security dot1x authentication-list ACS
session-timeout 1800
```

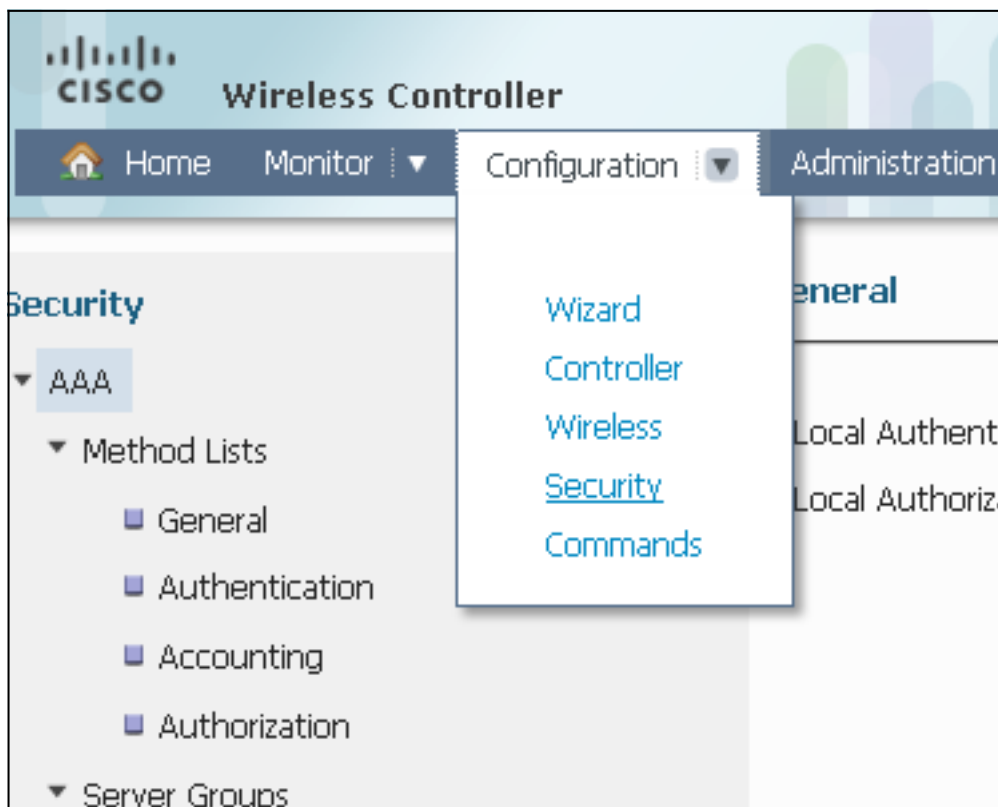
```
no shutdown
```

```
aaa new-model
!  
!  
aaa group server radius ACS
  server name ACS
!  
aaa authentication dot1x ACS group ACS  
  
radius server ACS
  address ipv4 10.106.102.50 auth-port 1645 acct-port 1646
  key Cisco123  
  
dot1x system-auth-contro
```

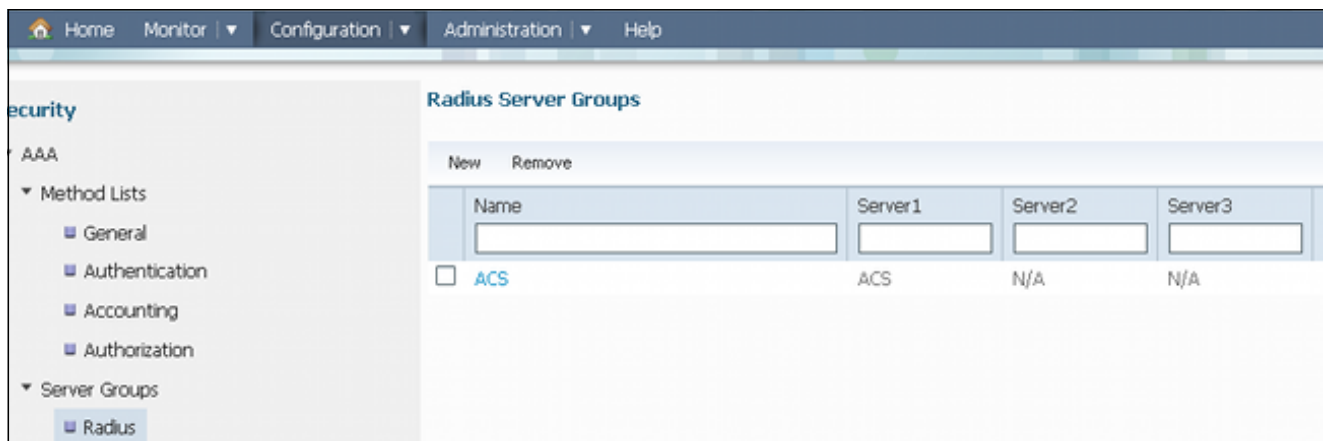
Configurar o WLC 5760/3850 com GUI

Este procedimento descreve como configurar o controlador 5760 e o switch 3850 com a GUI:

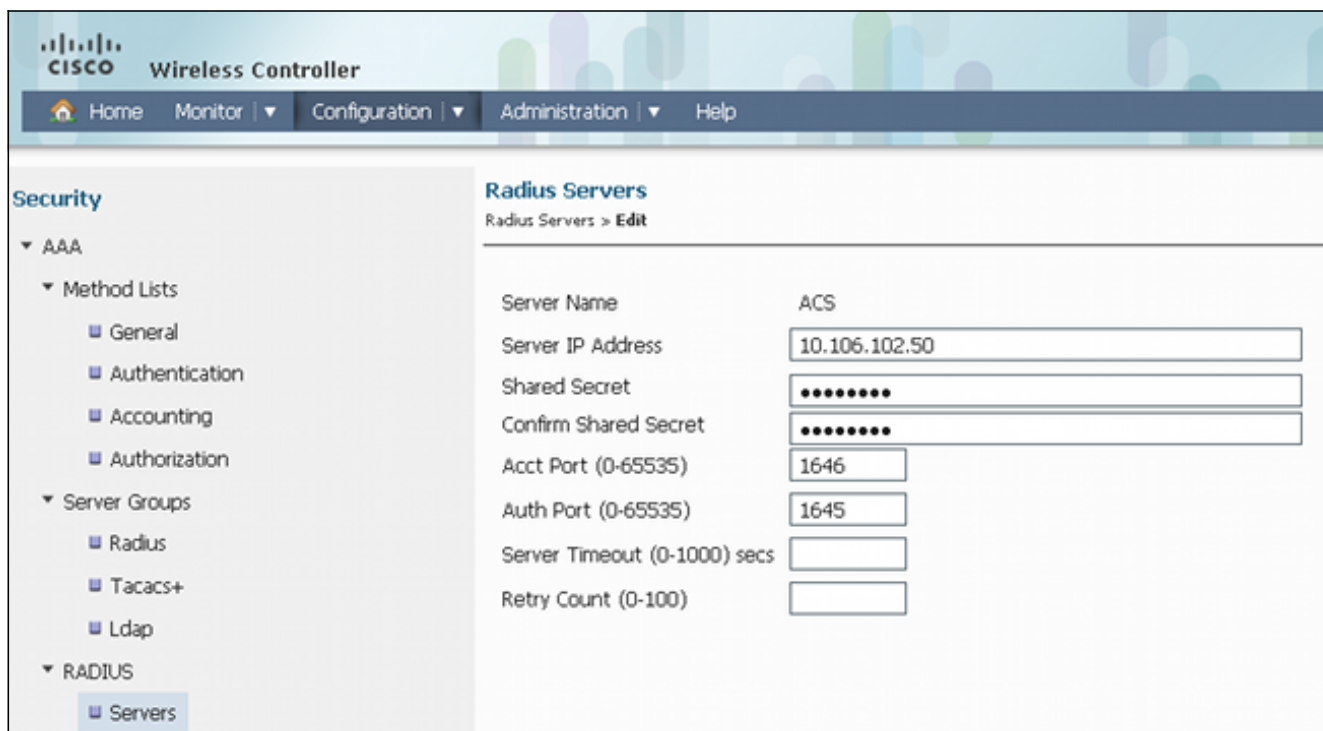
1. Para adicionar o servidor RADIUS, navegue até **Configuration > Security > AAA**:



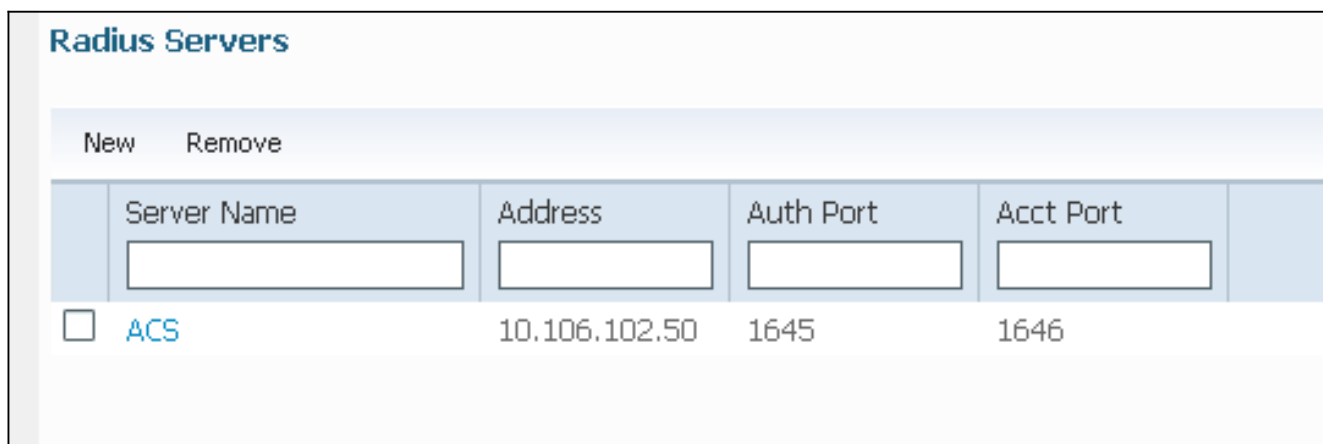
2. Navegue até **Server Groups > Radius** e crie um Radius Server Group com o nome 'ACS':



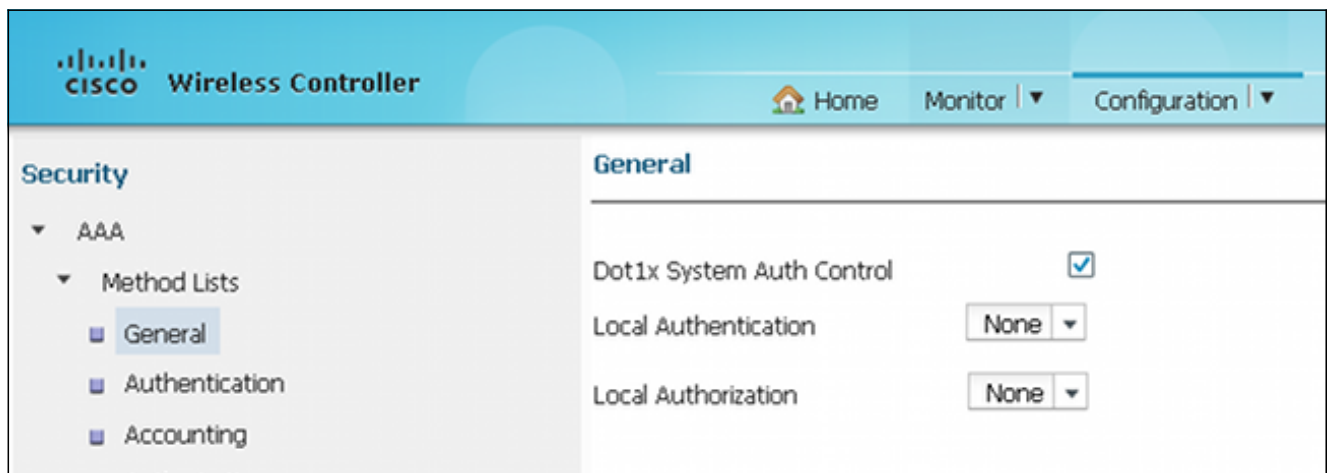
3. Navegue até **RADIUS > Services** e configure o servidor RADIUS 'ACS':



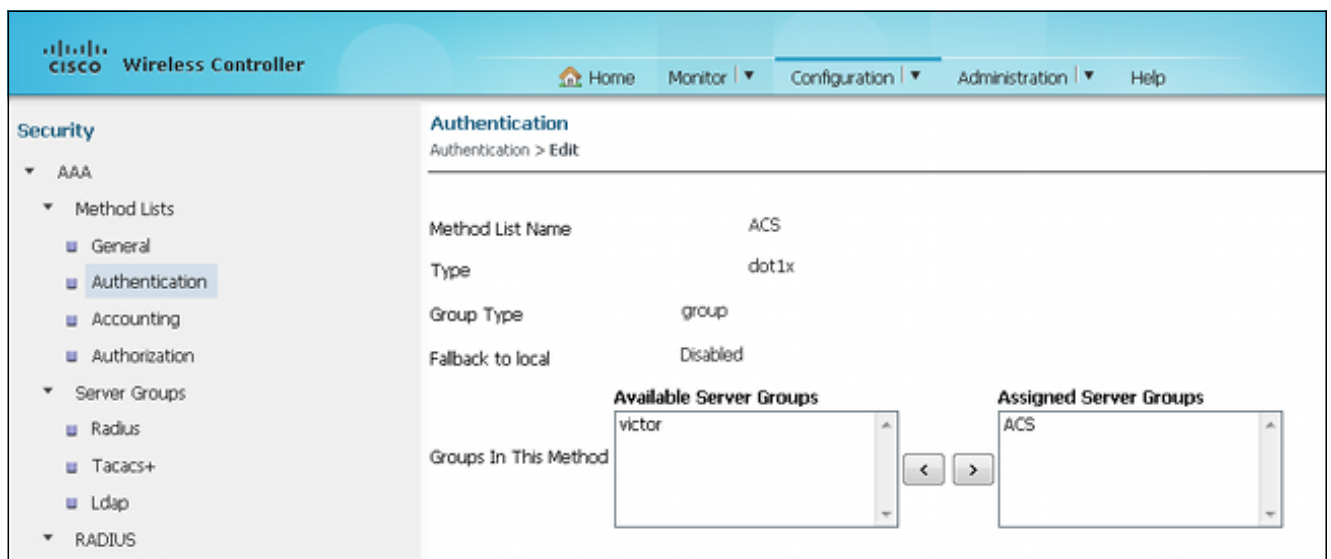
Este é um exemplo da configuração completa:



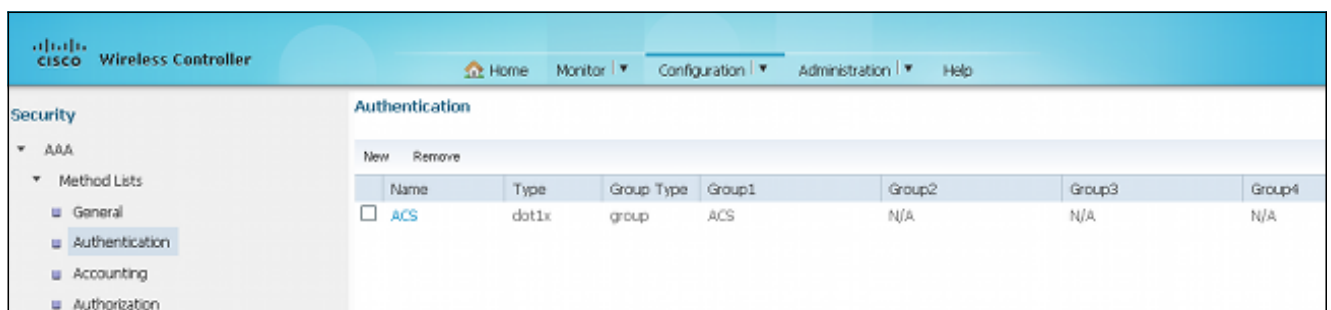
4. Navegue para **Listas de métodos > Geral** e habilite o **Controle de autenticação do sistema Dot1x** (Controle de autenticação do sistema 802.1X). Caso contrário, a autenticação poderá falhar:



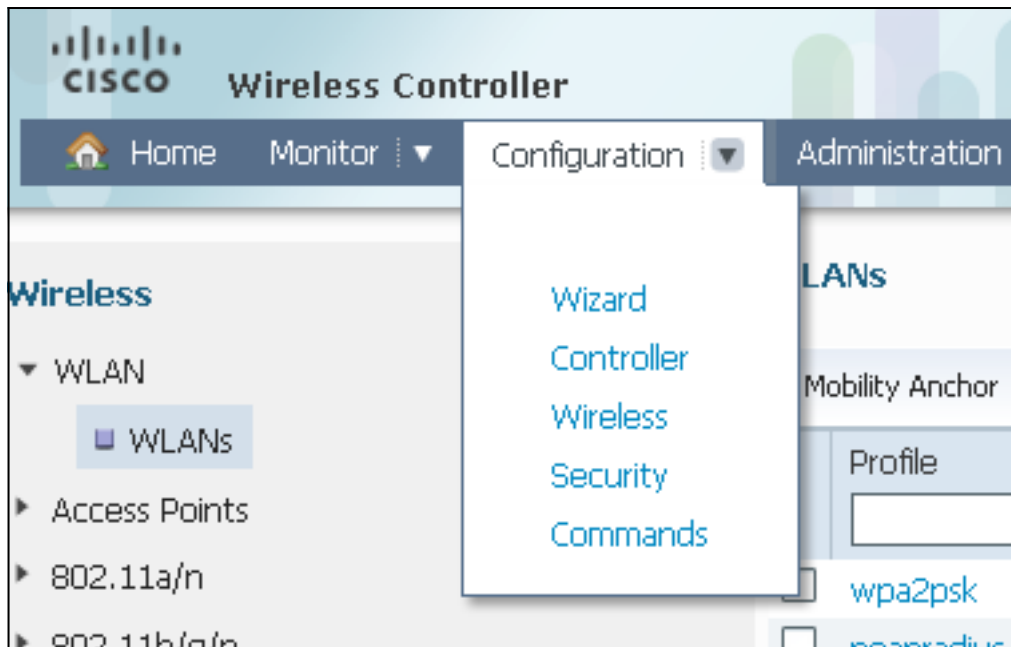
5. Navegue até **Method Lists > Authentication** e mapeie o servidor RADIUS 'ACS' configurado para a Method List (Lista de métodos), que, por sua vez, é mapeado para a WLAN no servidor Authentication, Authorization, and Accounting (AAA):



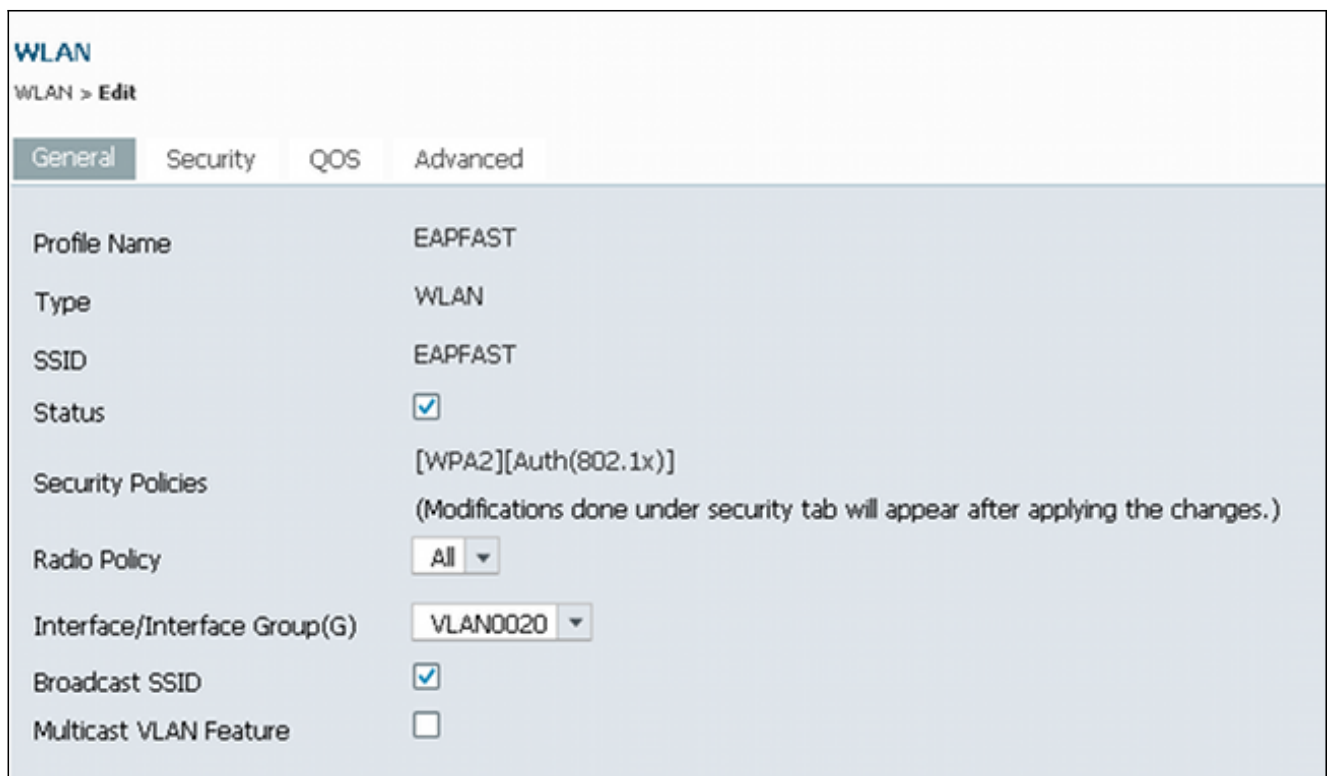
É assim que o 'ACS' aparece na lista de métodos:



6. Para configurar a WLAN e mapear o ACS, abra o acesso da GUI na WLC e navegue para **Configuration > Wireless > WLAN > WLANs**.



7. Na página da WLAN, clique em **NOVO** e navegue até a guia **Geral**. Crie uma WLAN com 802.1X e mapeie o servidor RADIUS:



8. Navegue até a guia **Security > Layer 2** Tab e verifique se há WPA/WPA2 com 802.1X habilitado:

WLAN
WLAN > **Edit**

General Security QOS Advanced

Layer2 Layer3 AAA Server

Layer 2 Security WPA + WPA2 ▾

MAC Filtering

WPA+WPA2 Parameters

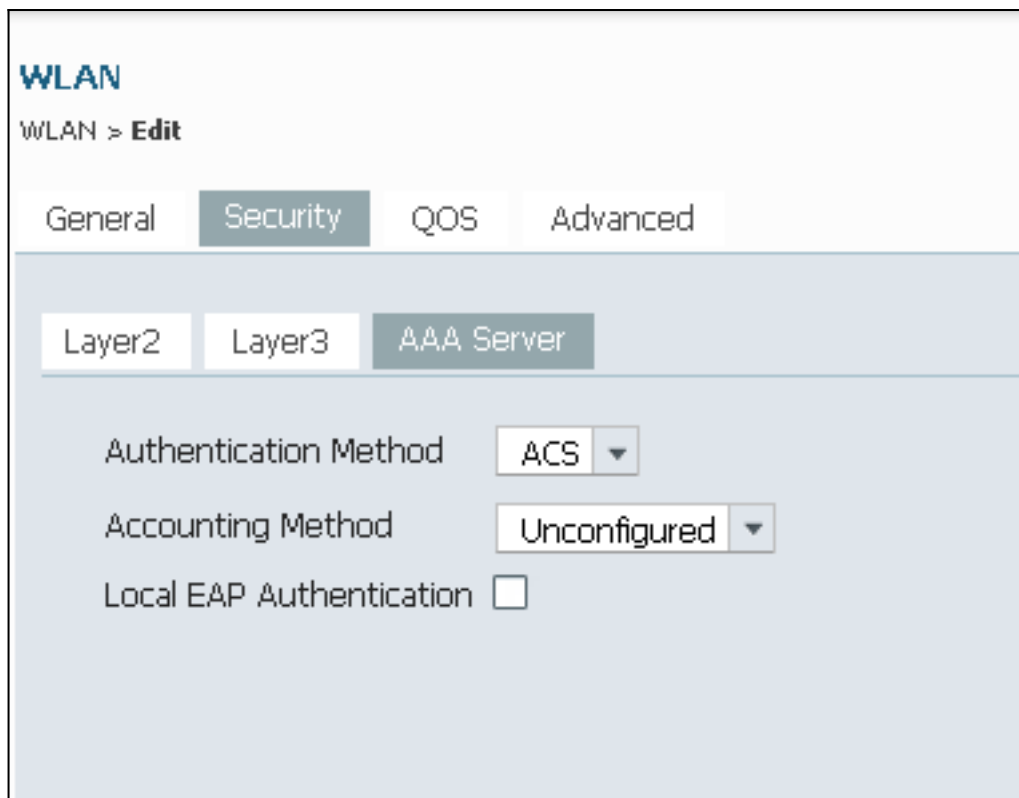
WPA Policy

WPA2 Policy

WPA2 Encryption AES TKIP

Auth Key Mgmt 802.1x ▾

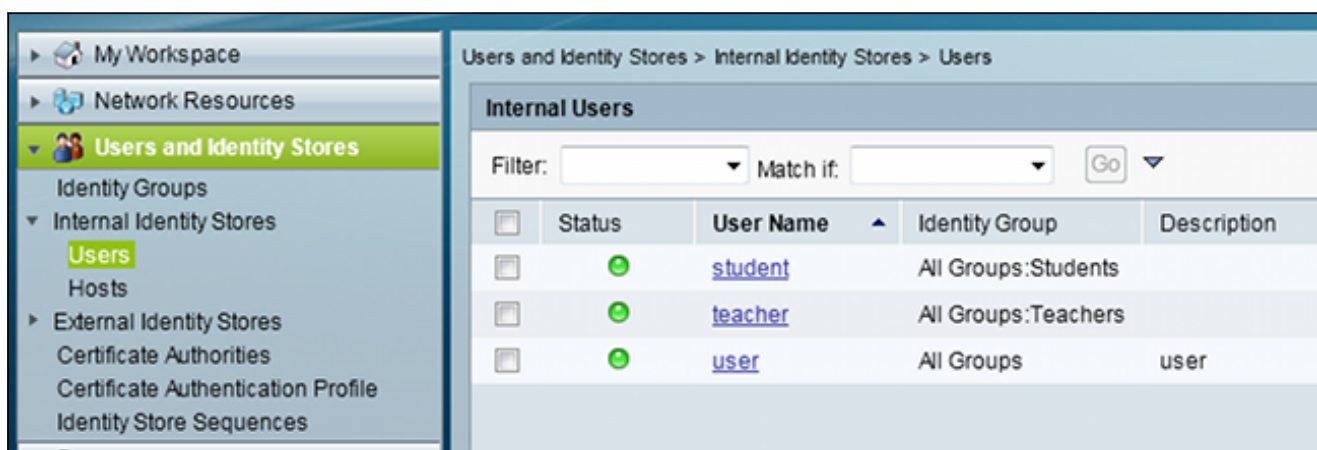
9. Navegue até a guia **Servidor AAA** e mapeie a lista de métodos de autenticação para esta WLAN 'ACS':



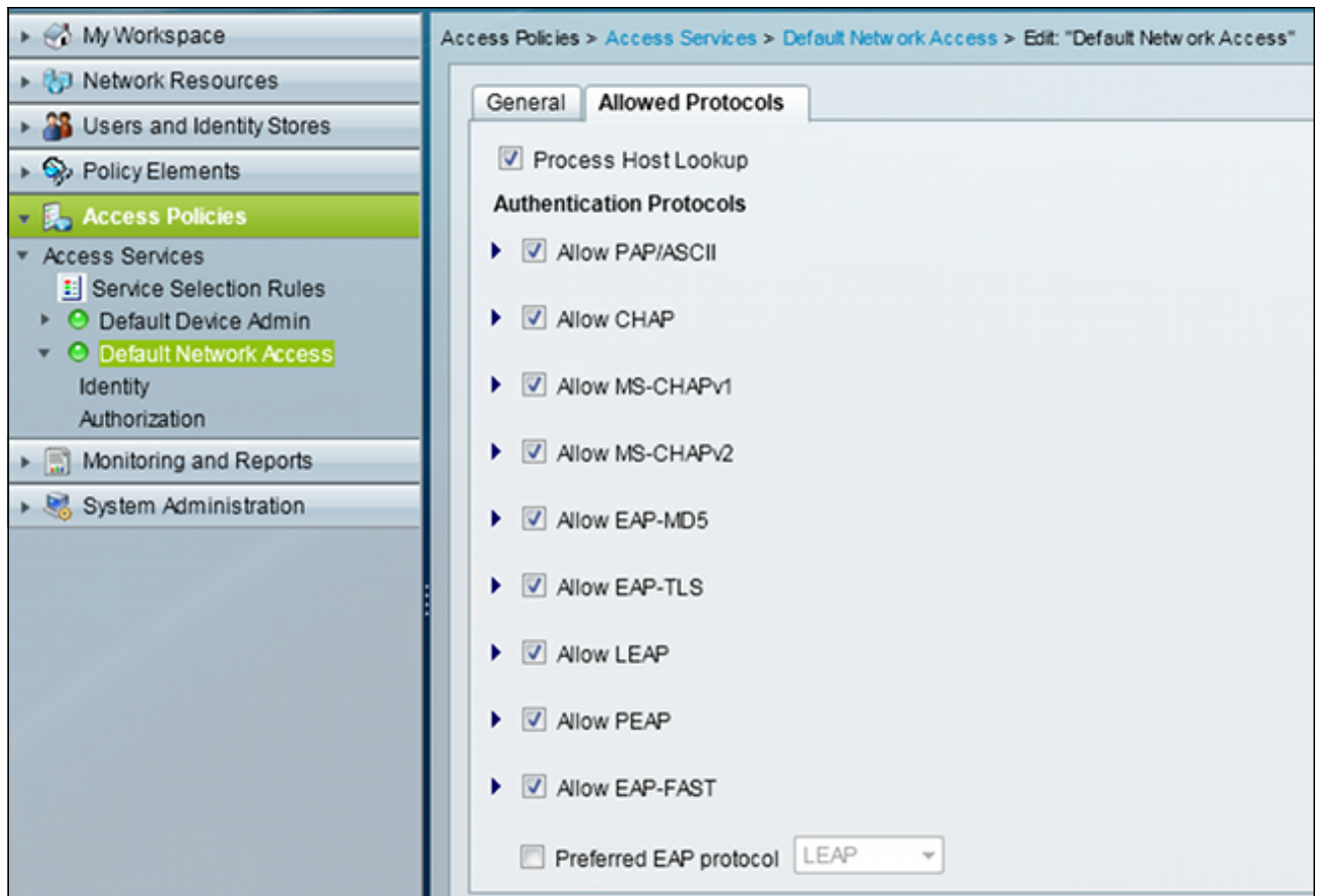
Configurar o ACS 5.2 (servidor RADIUS)

Este procedimento descreve como configurar o servidor RADIUS. Suponha que o switch 5760 WLC e 3850 já estejam adicionados no ACS sob clientes AAA.

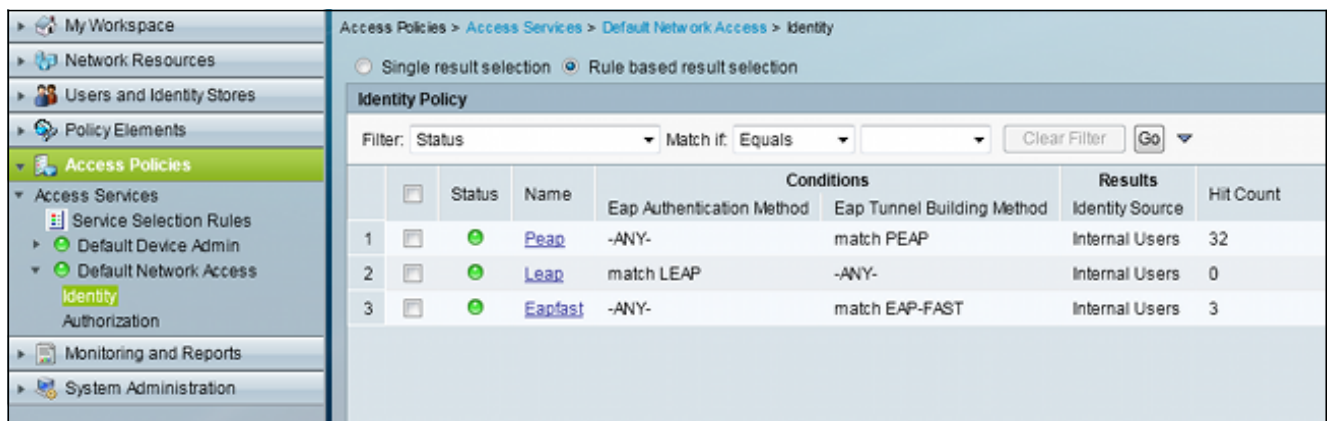
1. Navegue até **Usuários e Repositórios de identidades > Repositórios internos de identidades > Usuários**, e configure os usuários e o banco de dados de usuários no ACS:



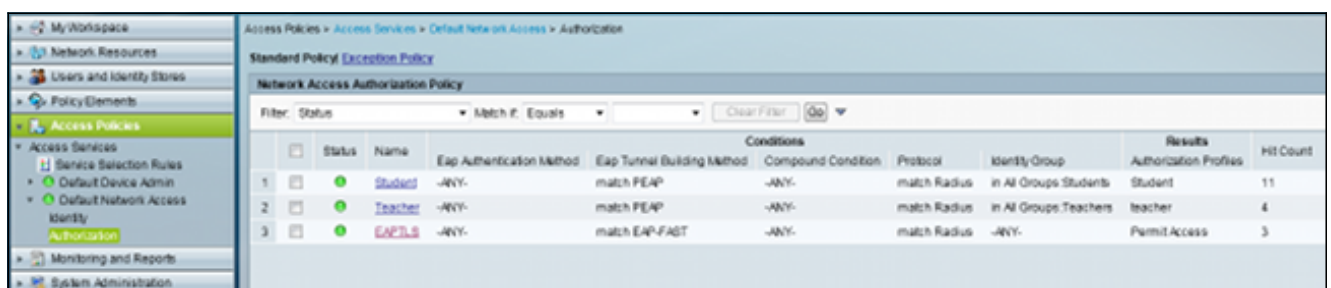
2. Navegue até **Access Policies > Access Services > Default Network Access** e ative os protocolos de autenticação necessários. Certifique-se de ativar EAP-FAST:



3. Navegue até **Default Network Access > Identity** e configure as regras de Sequência de Identidade para EAP-FAST:

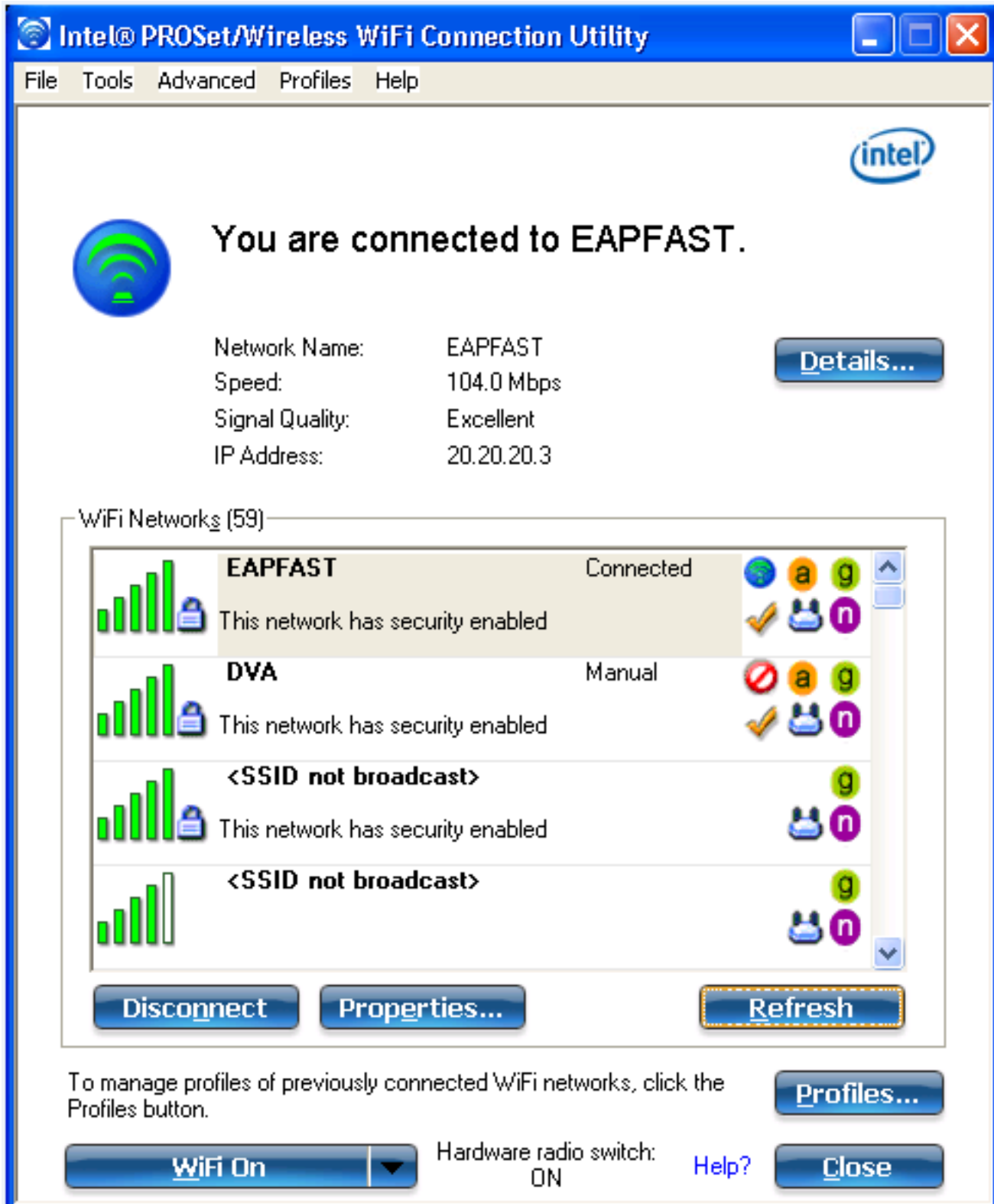


4. Navegue até **Default Network Access > Authorization** e consulte as regras de autorização que concedem acesso a clientes EAP após a autenticação bem-sucedida:



Verificar

Use esta seção para confirmar se a sua configuração funciona corretamente. Conecte o cliente ao WLAN EAP-FAST.



The screenshot shows the Intel PROSet/Wireless WiFi Connection Utility window. The title bar reads "Intel® PROSet/Wireless WiFi Connection Utility". The menu bar includes "File", "Tools", "Advanced", "Profiles", and "Help". The Intel logo is in the top right corner. A large green Wi-Fi signal icon is on the left, and the text "You are connected to EAPFAST." is displayed in the center. Below this, connection details are listed: Network Name: EAPFAST, Speed: 104.0 Mbps, Signal Quality: Excellent, and IP Address: 20.20.20.3. A "Details..." button is to the right of these details. Below the connection information is a list of "WiFi Networks (59)". The first network, "EAPFAST", is highlighted in grey and shows a signal strength bar, a lock icon, and the text "This network has security enabled". To its right are icons for a globe, 'a', 'g', a checkmark, a Wi-Fi symbol, and 'n'. Below it is "DVA" with a signal bar, lock icon, and "This network has security enabled", with icons for a globe, 'a', 'g', a checkmark, a Wi-Fi symbol, and 'n'. Below that are two entries for "<SSID not broadcast>" with signal bars, lock icons, and "This network has security enabled", each with icons for a globe, 'g', a Wi-Fi symbol, and 'n'. At the bottom of the network list are "Disconnect", "Properties...", and "Refresh" buttons. Below the network list, a text box says "To manage profiles of previously connected WiFi networks, click the Profiles button." with a "Profiles..." button to its right. At the very bottom, there is a "WiFi On" button with a dropdown arrow, the text "Hardware radio switch: ON", a "Help?" link, and a "Close" button.

Intel® PROSet/Wireless WiFi Connection Utility

File Tools Advanced Profiles Help

intel

You are connected to EAPFAST.

Network Name: EAPFAST
Speed: 104.0 Mbps
Signal Quality: Excellent
IP Address: 20.20.20.3

Details...

WiFi Networks (59)

Network Name	Status	Security	Icons
EAPFAST	Connected	This network has security enabled	Globe, a, g, Checkmark, Wi-Fi, n
DVA	Manual	This network has security enabled	Globe, a, g, Checkmark, Wi-Fi, n
<SSID not broadcast>		This network has security enabled	Globe, g, Wi-Fi, n
<SSID not broadcast>		This network has security enabled	Globe, g, Wi-Fi, n

Disconnect Properties... Refresh

To manage profiles of previously connected WiFi networks, click the Profiles button. Profiles...

WiFi On Hardware radio switch: ON Help? Close

Troubleshoot

Esta seção fornece informações que podem ser usadas para o troubleshooting da sua

configuração.

Note: Consulte [Informações Importantes sobre Comandos de Depuração antes de usar comandos debug](#).

```
Controller#sh debugging
```

```
Nova Platform:
```

```
dot11/state debugging is on
pem/events debugging is on
client/mac-addr debugging is on
dot11/detail debugging is on
mac/ filters[string 0021.5c8c.c761] debugging is on
dot11/error debugging is on
dot11/mobile debugging is on
pem/state debugging is on
```

```
set trace group-wireless-client filter mac 0021.5c8c.c761
set trace wcm-dot1x event filter mac 0021.5c8c.c761
set trace wcm-dot1x aaa filter mac 0021.5c8c.c761
set trace aaa wireless events filter mac 0021.5c8c.c761
set trace access-session core sm filter mac 0021.5c8c.c761
set trace access-session method dot1x filter 0021.5c8c.c761
```

```
Controller#
```

```
*Sep 1 06:00:18.282: 0021.5C8C.C761 Association received from mobile on AP
C8F9.F983.4260 1 wcm: .D^Iw for client 0:21:5c:t! w\2105HnJ^Iwy_status
0 attr len^G$8\227v^K
*Sep 1 06:00:18.282: 0021.5C8C.C761 qos upstream policy is unknown and
downstream policy is unknown 1 wcm: r client 0:21:5c:t! w\2105HnJ^Iwy_status
0 attr len^G$8\227v^K
*Sep 1 06:00:18.282: 0021.5C8C.C761 apChanged 0 wlanChanged 1 mscb ipAddr
20.20.20.3, apf RadiusOverride 0x0, numIPv6Addr=0 1 wcm: nJ^Iwy_status 0 attr
len^G$8\227v^K
*Sep 1 06:00:18.282: 0021.5C8C.C761 Applying WLAN policy on MSCB. 1 wcm:
ipAddr 20.20.20.3, apf RadiusOverride 0x0, numIPv6Addr=0
*Sep 1 06:00:18.282: 0021.5C8C.C761 Scheduling deletion of Mobile Station:
1 wcm: (callerId: 50) in 1 seconds
*Sep 1 06:00:18.282: 0021.5C8C.C761 Disconnecting client due to switch of WLANs
from 1(wpa2psk) to 4(EAPFAST) 1 wcm: numIPv6Addr=0
*Sep 1 06:00:19.174: 0021.5C8C.C761 apfMsExpireCallback (apf_ms.c: 1 wcm: 664)
Expiring Mobile!
*Sep 1 06:00:19.174: 0021.5C8C.C761 apfMsExpireMobileStation (apf_ms.c: 1 wcm:
6953) Changing state for mobile 0021.5C8C.C761 on AP C8F9.F983.4260 from
Associated to Disassociated
*Sep 1 06:00:19.174: 0021.5C8C.C761 Sent Deauthenticate to mobile on BSSID
C8F9.F983.4260 slot 1(caller apf_ms.c: 1 wcm: 7036)
*Sep 1 06:00:19.174: 0021.5C8C.C761 apfMsExpireMobileStation (apf_ms.c: 1 wcm:
7092) Changing state for mobile 0021.5C8C.C761 on AP C8F9.F983.4260 from
Disassociated to Idle
*Sep 1 06:00:19.174: 0021.5C8C.C761 20.20.20.3 RUN (20) Deleted mobile LWAPP
rule on AP [ C8F9.F983.4260 ] 1 wcm: 5C8C.C761 on AP C8F9.F983.4260 from
Disassociated to Idle
*Sep 1 06:00:19.174: PEM recv processing msg Del SCB(4) 1 wcm: Deleted mobile
*Sep 1 06:00:19.174: 0021.5C8C.C761 20.20.20.3 RUN (20) FastSSID for the client
[ C8F9.F983.4260 ] NOTENABLED 1 wcm: C.C761 on AP C8F9.F983.4260 from
Disassociated to Idle
*Sep 1 06:00:19.174: 0021.5C8C.C761 Incrementing the Reassociation Count 1 for
client (of interface VLAN0020) 1 wcm: D
*Sep 1 06:00:19.174: 0021.5C8C.C761 Clearing Address 20.20.20.3 on mobile 1 wcm:
for client (of interface VLAN0020)
```

*Sep 1 06:00:19.174: 0021.5C8C.C761 20.20.20.3 RUN (20) Skipping TMP rule add 1 wcm: client (of interface VLAN0020)

*Sep 1 06:00:19.174: 0021.5C8C.C761 20.20.20.3 RUN (20) Change state to DHCP_REQD (7) last state RUN (20) 1 wcm:

*Sep 1 06:00:19.174: 0021.5C8C.C761 WCDB_CHANGE: 1 wcm: Client 1 m_vlan 20 Radio iif id 0xbfcd00000003a bssid iif id 0x8a3a8000000043, bssid C8F9.F983.4260

*Sep 1 06:00:19.174: 0021.5C8C.C761 WCDB_AUTH: 1 wcm: Adding opt82 len 0

*Sep 1 06:00:19.174: 0021.5C8C.C761 WCDB_CHANGE: 1 wcm: Suppressing SPI (client pending deletion) pemstate 7 state LEARN_IP(2) vlan 20 client_id 0x8006400000004e mob=Local(1) ackflag 2 dropd 0, delete 1

*Sep 1 06:00:19.174: 0021.5C8C.C761 Sending SPI spi_epm_epm_terminate_session successfull 1 wcm: pemstate 7 state LEARN_IP(2) vlan 20 client_id 0x8006400000004e mob=Local(1) ackflag 2 dropd 0, delete 1

*Sep 1 06:00:19.175: 0021.5C8C.C761 Sending SPI spi_epm_epm_terminate_session successfull 1 wcm: pemstate 7 state LEARN_IP(2) vlan 20 client_id 0x8006400000004e mob=Local(1) ackflag 2 dropd 0, delete 1

*Sep 1 06:00:19.175: 0021.5C8C.C761 Deleting wireless client; Reason code 0, Preset 1, AAA cause 1 1 wcm: 7 state LEARN_IP(2) vlan 20 client_id 0x8006400000004e mob=Local(1) ackflag 2 dropd 0, delete 1

*Sep 1 06:00:19.175: 0021.5C8C.C761 WCDB_DEL: 1 wcm: Successfully sent

*Sep 1 06:00:19.175: 0021.5C8C.C761 Expiring mobile state delete 1 wcm: on code 0, Preset 1, AAA cause 1

*Sep 1 06:00:19.175: 0021.5C8C.C761 0.0.0.0 DHCP_REQD (7) Handling pemDelScb Event skipping delete 1 wcm: state LEARN_IP(2) vlan 20 client_id 0x8006400000004e mob=Local(1) ackflag 2 dropd 0, delete 1

*Sep 1 06:00:19.178: 0021.5C8C.C761 WCDB SPI response msg handler client code 1 mob state 1 1 wcm: g delete

*Sep 1 06:00:19.178: 0021.5C8C.C761 apfProcessWcdbClientDelete: 1 wcm: Delete ACK from WCDB.

*Sep 1 06:00:19.178: 0021.5C8C.C761 WCDB_DELACK: 1 wcm: wcdbAckRecvdFlag updated

*Sep 1 06:00:19.178: 0021.5C8C.C761 WCDB_DELACK: 1 wcm: Client IIF Id dealloc SUCCESS w/ 0x8006400000004e.

*Sep 1 06:00:19.178: 0021.5C8C.C761 Invoked platform delete and cleared handle 1 wcm: w/ 0x8006400000004e.

*Sep 1 06:00:19.178: 0021.5C8C.C761 Deleting mobile on AP C8F9.F983.4260 (1) 1 wcm: w/ 0x8006400000004e.

*Sep 1 06:00:19.178: 0021.5C8C.C761 Unlinked and freed mscb 1 wcm: 8F9.F983.4260 (1)

*Sep 1 06:00:19.178: WCDB_IIF: 1 wcm: Ack Message ID: 0x8006400000004e code 1003

*Sep 1 06:00:19.361: 0021.5C8C.C761 Adding mobile on LWAPP AP C8F9.F983.4260 (1) 1 wcm: x800640000.D^Iwe.

*Sep 1 06:00:19.361: 0021.5C8C.C761 Creating WL station entry for client - rc 0 1 wcm:

*Sep 1 06:00:19.361: 0021.5C8C.C761 Association received from mobile on AP C8F9.F983.4260 1 wcm: 0.D^Iwe.

*Sep 1 06:00:19.361: 0021.5C8C.C761 qos upstream policy is unknown and downstream policy is unknown 1 wcm:

*Sep 1 06:00:19.361: 0021.5C8C.C761 apChanged 0 wlanChanged 0 mscb ipAddr 0.0.0.0, apf RadiusOverride 0x0, numIPv6Addr=0 1 wcm: \2105HnJ^Iwlient_id 0x80064000^G\$8\227v^K

*Sep 1 06:00:19.361: 0021.5C8C.C761 Applying WLAN policy on MSCB. 1 wcm: ipAddr 0.0.0.0, apf RadiusOverride 0x0, numIPv6Addr=0

*Sep 1 06:00:19.361: 0021.5C8C.C761 Applying WLAN ACL policies to client 1 wcm: 0.0.0.0, apf RadiusOverride 0x0, numIPv6Addr=0

*Sep 1 06:00:19.361: 0021.5C8C.C761 No Interface ACL used for Wireless client in WCM(NGWC) 1 wcm: usOverride 0x0, numIPv6Addr=0

*Sep 1 06:00:19.361: 0021.5C8C.C761 Applying site-specific IPv6 override for station 0021.5C8C.C761 - vapId 4, site 'default-group', interface 'VLAN0020' 1 wcm:

*Sep 1 06:00:19.361: 0021.5C8C.C761 Applying local bridging Interface Policy for station 0021.5C8C.C761 - vlan 20, interface 'VLAN0020' 1 wcm: erface 'VLAN0020'

*Sep 1 06:00:19.361: 0021.5C8C.C761 STA - rates (8): 1 wcm: 140 18 152 36 176 72 96 108 0 0 0 0 0 0 0

*Sep 1 06:00:19.361: 0021.5C8C.C761 new capwap_wtp_iif_id b6818000000038, sm

capwap_wtp_iif_id 0 1 wcm: 8C.C761 - vlan 20, interface 'VLAN0020'
*Sep 1 06:00:19.361: 0021.5C8C.C761 WCDB_ADD: 1 wcm: Radio IIFID
0xbfcfc00000003a, BSSID IIF Id 0x81fac000000041, COS 4
*Sep 1 06:00:19.361: Load Balancer: 1 wcm: Success, Resource allocated are:
Active Switch number: 1, Active Asic number : 0, Reserve Switch number 0 Reserve
Asic number 0. AP Asic num 0
*Sep 1 06:00:19.361: 0021.5C8C.C761 WCDB_ADD: 1 wcm: Anchor Sw 1, Doppler 0
*Sep 1 06:00:19.361: 0021.5C8C.C761 WCDB_ALLOCATE: 1 wcm: Client IIF Id alloc
SUCCESS w/ client 84fd0000000050 (state 0).
*Sep 1 06:00:19.361: 0021.5C8C.C761 iifid Clearing Ack flag 1 wcm: F Id alloc
SUCCESS w/ client 84fd0000000050 (state 0).
*Sep 1 06:00:19.361: 0021.5C8C.C761 WCDB_ADD: 1 wcm: Adding opt82 len 0
*Sep 1 06:00:19.361: 0021.5C8C.C761 WCDB_ADD: 1 wcm: Cleaering Ack flag
*Sep 1 06:00:19.361: 0021.5C8C.C761 WCDB_ADD: 1 wcm: ssid EAPFAST bssid
C8F9.F983.4260 vlan 20 auth=ASSOCIATION(0) wlan(ap-group/global) 4/4 client 0
assoc 3 mob=Unassoc(0) radio 1 m_vlan 20 ip 0.0.0.0 src 0xb6818000000038 dst 0x0
cid 0x84fd0000000050 glob rsc id 16dhcpsrv 0.0.0.0
*Sep 1 06:00:19.361: 0021.5C8C.C761 WCDB_ADD: 1 wcm: msch iifid 0x84fd0000000050
msinfo iifid 0x0
*Sep 1 06:00:19.361: 0021.5C8C.C761 0.0.0.0 START (0) Initializing policy 1
wcm: info iifid 0x0
*Sep 1 06:00:19.361: 0021.5C8C.C761 0.0.0.0 START (0) Change state to AUTHCHECK
(2) last state AUTHCHECK (2) 1 wcm: (ap-group/global) 4/4 client 0 assoc 3
mob=Unassoc(0) radio 1 m_vlan 20 ip 0.0.0.0 src 0xb6818000000038 dst 0x0 cid
0x84fd0000000050 glob rsc id 16dhcpsrv 0.0.0.0
*Sep 1 06:00:19.361: 0021.5C8C.C761 0.0.0.0 AUTHCHECK (2) Change state to
8021X_REQD (3) last state 8021X_REQD (3) 1 wcm: oup/global) 4/4 client 0 assoc 3
mob=Unassoc(0) radio 1 m_vlan 20 ip 0.0.0.0 src 0xb6818000000038 dst 0x0 cid
0x84fd0000000050 glob rsc id 16dhcpsrv 0.0.0.0
*Sep 1 06:00:19.361: 0021.5C8C.C761 0.0.0.0 8021X_REQD (3) DHCP Not required on
AP C8F9.F983.4260 vapId 4 apVapId 4for this client 1 wcm: lient 0 assoc 3
mob=Unassoc(0) radio 1 m_vlan 20 ip 0.0.0.0 src 0xb6818000000038 dst 0x0 cid
0x84fd0000000050 glob rsc id 16dhcpsrv 0.0.0.0
*Sep 1 06:00:19.361: 0021.5C8C.C761 Not Using WMM Compliance code qosCap 00 1
wcm: ed on AP C8F9.F983.4260 vapId 4 apVapId 4for this client
*Sep 1 06:00:19.361: 0021.5C8C.C761 0.0.0.0 8021X_REQD (3) Plumbed mobile LWAPP
rule on AP C8F9.F983.4260 vapId 4 apVapId 4 1 wcm: client
*Sep 1 06:00:19.361: 0021.5C8C.C761 apfPemAddUser2 (apf_policy.c: 1 wcm: 161)
Changing state for mobile 0021.5C8C.C761 on AP C8F9.F983.4260 from Idle to
Associated
*Sep 1 06:00:19.361: 0021.5C8C.C761 Stopping deletion of Mobile Station: 1 wcm:
(callerId: 48)
*Sep 1 06:00:19.361: 0021.5C8C.C761 Ms Timeout = 0, Session Timeout = 1800 1 wcm:
llderId: 48)
*Sep 1 06:00:19.361: 0021.5C8C.C761 Sending Assoc Response to station on BSSID
C8F9.F983.4260 (status 0) ApVapId 4 Slot 1 1 wcm: .F983.4260 from Idle to
Associated
*Sep 1 06:00:19.362: 0021.5C8C.C761 apfProcessAssocReq (apf_80211.c: 1 wcm: 5260)
Changing state for mobile 0021.5C8C.C761 on AP C8F9.F983.4260 from Associated
to Associated
*Sep 1 06:00:19.362: WCDB_IIF: 1 wcm: Ack Message ID: 0x84fd0000000050 code 1001
*Sep 1 06:00:21.239: 0021.5C8C.C761 client incoming attribute size are 485 1 wcm:
anging state for .D^Iwle 0021.5C8C.C761 t! w\2105HnJ^IwF983.4260 from
Ass^G\$8\227v^K
*Sep 1 06:00:21.258: 0021.5C8C.C761 0.0.0.0 8021X_REQD (3) Change state to
L2AUTHCOMPLETE (4) last state L2AUTHCOMPLETE (4) 1 wcm: ^IwF983.4260 from
Ass^G\$8\227v^K
*Sep 1 06:00:21.258: 0021.5C8C.C761 WCDB_CHANGE: 1 wcm: Client 1 m_vlan 20 Radio
iif id 0xbfcfc00000003a bssid iif id 0x81fac000000041, bssid C8F9.F983.4260
*Sep 1 06:00:21.258: 0021.5C8C.C761 WCDB_AUTH: 1 wcm: Adding opt82 len 0
*Sep 1 06:00:21.258: 0021.5C8C.C761 WCDB_LLM: 1 wcm: NoRun Prev Mob 0, Curr Mob
0 llmReq 1, return False
*Sep 1 06:00:21.258: 0021.5C8C.C761 auth state 1 mob state 0 setWme 0 wme 1
roam_sent 0 1 wcm: rn False

*Sep 1 06:00:21.258: 0021.5C8C.C761 WCDB_CHANGE: 1 wcm: auth=L2_AUTH(1) vlan 20 radio 1 client_id 0x84fd0000000050 mobility=Unassoc(0) src_int 0xb6818000000038 dst_int 0x0 ackflag 0 reassoc_client 0 llm_notif 0 ip 0.0.0.0 ip_learn_type UNKNOWN

*Sep 1 06:00:21.258: 0021.5C8C.C761 WCDB_CHANGE: 1 wcm: In L2 auth but l2ack waiting lfag not set,so set

*Sep 1 06:00:21.258: 0021.5C8C.C761 0.0.0.0 L2AUTHCOMPLETE (4) pemAdvanceState2: 1 wcm: MOBILITY-INCOMPLETE with state 4.

*Sep 1 06:00:21.258: 0021.5C8C.C761 0.0.0.0 L2AUTHCOMPLETE (4) pemAdvanceState2: 1 wcm: MOBILITY-INCOMPLETE with state 4.

*Sep 1 06:00:21.258: 0021.5C8C.C761 0.0.0.0 L2AUTHCOMPLETE (4) DHCP Not required on AP C8F9.F983.4260 vapId 4 apVapId 4for this client 1 wcm: 68180000000038 dst_int 0x0 ackflag 0 reassoc_client 0 llm_notif 0 ip 0.0.0.0 ip_learn_type UNKNOWN

*Sep 1 06:00:21.258: 0021.5C8C.C761 Not Using WMM Compliance code qosCap 00 1 wcm: quired on AP C8F9.F983.4260 vapId 4 apVapId 4for this client

*Sep 1 06:00:21.258: 0021.5C8C.C761 0.0.0.0 L2AUTHCOMPLETE (4) Plumbed mobile LWAPP rule on AP C8F9.F983.4260 vapId 4 apVapId 4 1 wcm: client

*Sep 1 06:00:21.258: 0021.5C8C.C761 0.0.0.0 L2AUTHCOMPLETE (4) Change state to DHCP_REQD (7) last state DHCP_REQD (7) 1 wcm: apVapId 4

*Sep 1 06:00:21.258: 0021.5C8C.C761 WCDB_CHANGE: 1 wcm: Client 1 m_vlan 20 Radio iif id 0xbfcfc000000003a bssid iif id 0x81fac0000000041, bssid C8F9.F983.4260

*Sep 1 06:00:21.258: 0021.5C8C.C761 WCDB_AUTH: 1 wcm: Adding opt82 len 0

*Sep 1 06:00:21.258: 0021.5C8C.C761 WCDB_CHANGE: 1 wcm: Suppressing SPI (Mobility state not known) pemstate 7 state LEARN_IP(2) vlan 20 client_id 0x84fd000000000050 mob=Unassoc(0) ackflag 1 dropd 0

*Sep 1 06:00:21.258: 0021.5C8C.C761 0.0.0.0 DHCP_REQD (7) pemAdvanceState2 4001, Adding TMP rule 1 wcm: e 7 state LEARN_IP(2) vlan 20 client_id 0x84fd000000000050 mob=Unassoc(0) ackflag 1 dropd 0

*Sep 1 06:00:21.258: 0021.5C8C.C761 0.0.0.0 DHCP_REQD (7) Adding Fast Path rule on AP C8F9.F983.4260 , slot 1 802.1P = 0 1 wcm: client_id 0x84fd000000000050 mob=Unassoc(0) ackflag 1 dropd 0

*Sep 1 06:00:21.258: 0021.5C8C.C761 0.0.0.0 DHCP_REQD (7) Successfully plumbed mobile rule 1 wcm: F9.F983.4260 , slot 1 802.1P = 0^M

*Sep 1 06:00:21.258: PEM rcv processing msg Add SCB(3) 1 wcm: 7) Successfully plumbed mobile rule

*Sep 1 06:00:21.258: 0021.5C8C.C761 Incrementing the Reassociation Count 1 for client (of interface VLAN0020) 1 wcm: lot 1 802.1P = 0^M

*Sep 1 06:00:21.258: 0021.5C8C.C761 0.0.0.0, auth_state 7 mmRole Unassoc !!! 1 wcm: r client (of interface VLAN0020)

*Sep 1 06:00:21.258: 0021.5C8C.C761 0.0.0.0, auth_state 7 mmRole Unassoc, updating wcdb not needed 1 wcm: VLAN0020)

*Sep 1 06:00:21.258: 0021.5C8C.C761 Tclas Plumb needed: 1 wcm: 0

*Sep 1 06:00:21.258: 0021.5C8C.C761 0.0.0.0 DHCP_REQD (7) pemAdvanceState2: 1 wcm: MOBILITY-COMPLETE with state 7.

*Sep 1 06:00:21.258: 0021.5C8C.C761 0.0.0.0 DHCP_REQD (7) State Update from Mobility-Incomplete to Mobility-Complete, mobility role=Local, client state=APF_MS_STATE_ASSOCIATED 1 wcm: 1 dropd 0

*Sep 1 06:00:21.258: 0021.5C8C.C761 0.0.0.0 DHCP_REQD (7) pemAdvanceState2 3611, Adding TMP rule 1 wcm: o Mobility-Complete, mobility role=Local, client state=APF_MS_STATE_ASSOCIATED

*Sep 1 06:00:21.258: 0021.5C8C.C761 0.0.0.0 DHCP_REQD (7) Replacing Fast Path rule on AP C8F9.F983.4260 , slot 1 802.1P = 0 1 wcm: e=Local, client state=APF_MS_STATE_ASSOCIATED

*Sep 1 06:00:21.258: 0021.5C8C.C761 0.0.0.0 DHCP_REQD (7) Successfully plumbed mobile rule 1 wcm: C8F9.F983.4260 , slot 1 802.1P = 0^M

*Sep 1 06:00:21.258: 0021.5C8C.C761 WCDB_CHANGE: 1 wcm: Client 1 m_vlan 20 Radio iif id 0xbfcfc0000000003a bssid iif id 0x81fac00000000041, bssid C8F9.F983.4260

*Sep 1 06:00:21.258: 0021.5C8C.C761 WCDB_AUTH: 1 wcm: Adding opt82 len 0

*Sep 1 06:00:21.258: 0021.5C8C.C761 WCDB_LLM: 1 wcm: NoRun Prev Mob 0, Curr Mob 1 llmReq 1, return False

*Sep 1 06:00:21.258: 0021.5C8C.C761 WCDB_CHANGE: 1 wcm: Suppressing SPI (ACK message not rcvd) pemstate 7 state LEARN_IP(2) vlan 20 client_id 0x84fd000000000050 mob=Local(1) ackflag 1 dropd 1

*Sep 1 06:00:21.258: 0021.5C8C.C761 Error updating wcdb on mobility complete 1 wcm: not recvd) pemstate 7 state LEARN_IP(2) vlan 20 client_id 0x84fd0000000050 mob=Local(1) ackflag 1 dropd 1

*Sep 1 06:00:21.258: PEM recv processing msg Epm spi response(12) 1 wcm: complete

*Sep 1 06:00:21.258: 0021.5C8C.C761 aaa attribute list length is 79 1 wcm: complete

*Sep 1 06:00:21.258: 0021.5C8C.C761 Sending SPI spi_epm_epm_session_create successfull 1 wcm:) pemstate 7 state LEARN_IP(2) vlan 20 client_id 0x84fd0000000050 mob=Local(1) ackflag 1 dropd 1

*Sep 1 06:00:21.258: PEM recv processing msg Add SCB(3) 1 wcm: pm_session_create successfull

*Sep 1 06:00:21.259: 0021.5C8C.C761 0.0.0.0, auth_state 7 mmRole Local !!! 1 wcm: successfull

*Sep 1 06:00:21.259: 0021.5C8C.C761 0.0.0.0, auth_state 7 mmRole Local, updating wcdb not needed 1 wcm: 7 state LEARN_IP(2) vlan 20 client_id 0x84fd0000000050 mob=Local(1) ackflag 1 dropd 1

*Sep 1 06:00:21.259: 0021.5C8C.C761 Tclas Plumb needed: 1 wcm: 0

*Sep 1 06:00:21.260: EPM: 1 wcm: Session create resp - client handle 84fd0000000050 session f2000027

*Sep 1 06:00:21.260: EPM: 1 wcm: Netflow session create resp - client handle 84fd0000000050 sess f2000027

*Sep 1 06:00:21.260: PEM recv processing msg Epm spi response(12) 1 wcm: le 84fd0000000050 sess f2000027

*Sep 1 06:00:21.261: 0021.5C8C.C761 Received session_create_response for client handle 37432873367634000 1 wcm: LEARN_IP(2) vlan 20 client_id 0x84fd0000000050 mob=Local(1) ackflag 1 dropd 1

*Sep 1 06:00:21.261: 0021.5C8C.C761 Received session_create_response with EPM session handle 4060086311 1 wcm:

*Sep 1 06:00:21.261: 0021.5C8C.C761 Send request to EPM 1 wcm: ate_response with EPM session handle 4060086311

*Sep 1 06:00:21.261: 0021.5C8C.C761 aaa attribute list length is 485 1 wcm: with EPM session handle 4060086311

*Sep 1 06:00:21.261: 0021.5C8C.C761 Sending Activate request for session handle 4060086311 successful 1 wcm: 1

*Sep 1 06:00:21.261: 0021.5C8C.C761 Post-auth policy request sent! Now wait for post-auth policy ACK from EPM 1 wcm: N_IP(2) vlan 20 client_id 0x84fd0000000050 mob=Local(1) ackflag 1 dropd 1

*Sep 1 06:00:21.261: EPM: 1 wcm: Init feature, client handle 84fd0000000050 session f2000027 authz 8f000011

*Sep 1 06:00:21.261: EPM: 1 wcm: Activate feature client handle 84fd0000000050 sess f2000027 authz 8f000011

*Sep 1 06:00:21.261: PEM recv processing msg Epm spi response(12) 1 wcm: 0050 sess f2000027 authz 8f000011

*Sep 1 06:00:21.261: 0021.5C8C.C761 Received activate_features_resp for client handle 37432873367634000 1 wcm: m EPM

*Sep 1 06:00:21.261: 0021.5C8C.C761 Received activate_features_resp for EPM session handle 4060086311 1 wcm: 0

*Sep 1 06:00:21.261: EPM: 1 wcm: Policy enforcement - client handle 84fd0000000050 session a8000011 authz 8f000011

*Sep 1 06:00:21.261: EPM: 1 wcm: Netflow policy enforcement - client handle 84fd0000000050 sess a8000011 authz 8f000011 msg_type 0 policy_status 0 attr len 0

*Sep 1 06:00:21.262: PEM recv processing msg Epm spi response(12) 1 wcm: e 84fd0000000050 sess a8000011 authz 8f000011 msg_type 0 policy_status 0 attr len 0

*Sep 1 06:00:21.262: 0021.5C8C.C761 Received policy_enforcement_response for client handle 37432873367634000 1 wcm: 011 msg_type 0 policy_status 0 attr len 0

*Sep 1 06:00:21.262: 0021.5C8C.C761 Received policy_enforcement_response for EPM session handle 2818572305 1 wcm: 0

*Sep 1 06:00:21.262: 0021.5C8C.C761 Received response for _EPM_SPI_ACTIVATE_FEATURES request sent for client 1 wcm: 011 msg_type 0 policy_status 0 attr len 0

*Sep 1 06:00:21.262: 0021.5C8C.C761 Received _EPM_SPI_STATUS_SUCCESS for request sent for client 1 wcm: for client

*Sep 1 06:00:21.262: 0021.5C8C.C761 Post-auth policy ACK recvd from EPM, unset

flag on MSCB 1 wcm: ient
*Sep 1 06:00:21.262: 0021.5C8C.C761 WCDB SPI response msg handler client code 0
mob state 0 1 wcm: ient
*Sep 1 06:00:21.262: 0021.5C8C.C761 WcdbClientUpdate: 1 wcm: L2 Auth ACK from
WCDB
*Sep 1 06:00:21.262: 0021.5C8C.C761 WCDB_L2ACK: 1 wcm: wcdbAckRecvdFlag updated
*Sep 1 06:00:21.262: 0021.5C8C.C761 WCDB_CHANGE: 1 wcm: Client 1 m_vlan 20 Radio
iif id 0xbfcd00000003a bssid iif id 0x81fac000000041, bssid C8F9.F983.4260
*Sep 1 06:00:21.262: 0021.5C8C.C761 WCDB_AUTH: 1 wcm: Adding opt82 len 0
*Sep 1 06:00:21.262: 0021.5C8C.C761 WCDB_LLM: 1 wcm: NoRun Prev Mob 0, Curr
Mob 1 llmReq 1, return False
*Sep 1 06:00:21.263: 0021.5C8C.C761 auth state 2 mob state 1 setWme 0 wme 1
roam_sent 0 1 wcm: rn False
*Sep 1 06:00:21.263: 0021.5C8C.C761 WCDB_CHANGE: 1 wcm: auth=LEARN_IP(2) vlan 20
radio 1 client_id 0x84fd0000000050 mobility=Local(1) src_int 0xb6818000000038
dst_int 0x0 ackflag 2 reassoc_client 0 llm_notif 0 ip 0.0.0.0 ip_learn_type
UNKNOWN
*Sep 1 06:00:24.425: 0021.5C8C.C761 WCDB_IP_BIND: 1 wcm: w/ IPv4 20.20.20.3
ip_learn_type DHCP add_delete 1,options_length 0
*Sep 1 06:00:24.425: 0021.5C8C.C761 WcdbClientUpdate: 1 wcm: IP Binding from
WCDB ip_learn_type 1, add_or_delete 1
*Sep 1 06:00:24.425: 0021.5C8C.C761 IPv4 Addr: 1 wcm: 20:20:20:3
*Sep 1 06:00:24.425: 0021.5C8C.C761 MS got the IP, resetting the Reassociation
Count 0 for client 1 wcm: _delete 1
*Sep 1 06:00:24.425: 0021.5C8C.C761 20.20.20.3 DHCP_REQD (7) Session Update not
required for Initial authenticated dot1x client 1 wcm: nt 0xb68180000000^G\$8\227v^K
*Sep 1 06:00:24.426: 0021.5C8C.C761 20.20.20.3 DHCP_REQD (7) Change state to
RUN (20) last state RUN (20) 1 wcm: ticated dot1x client
*Sep 1 06:00:24.426: 0021.5C8C.C761 WCDB_CHANGE: 1 wcm: Client 1 m_vlan 20 Radio
iif id 0xbfcd000000003a bssid iif id 0x81fac0000000041, bssid C8F9.F983.4260
*Sep 1 06:00:24.426: 0021.5C8C.C761 WCDB_AUTH: 1 wcm: Adding opt82 len 0
*Sep 1 06:00:24.426: 0021.5C8C.C761 WCDB_LLM: 1 wcm: prev Mob state 1 curr Mob
State 1 llReq flag 0
*Sep 1 06:00:24.426: 0021.5C8C.C761 auth state 4 mob state 1 setWme 0 wme 1
roam_sent 0 1 wcm: g 0
*Sep 1 06:00:24.426: 0021.5C8C.C761 WCDB_CHANGE: 1 wcm: auth=RUN(4) vlan 20
radio 1 client_id 0x84fd0000000050 mobility=Local(1) src_int 0xb6818000000038
dst_int 0x0 ackflag 2 reassoc_client 0 llm_notif 0 ip 20.20.20.3 ip_learn_type
DHCP
*Sep 1 06:00:24.426: 0021.5C8C.C761 20.20.20.3 RUN (20) Reached PLUMBFASPATH:
1 wcm: from line 4430
*Sep 1 06:00:24.426: 0021.5C8C.C761 20.20.20.3 RUN (20) Replacing Fast Path
rule on AP C8F9.F983.4260 , slot 1 802.1P = 0 1 wcm: 0xb6818000000038 dst_int
0x0
ackflag 2 reassoc_client 0 llm_notif 0 ip 20.\$=6v0.3
ip_lt^Dv^\7HnP6v^D6Hl5Ht^Dv\$6H8^ r^D6H>&5v8^ r^D6H>&5v^D6Ht^M^Lw^\7H8^ r
*Sep 1 06:00:24.426: 0021.5C8C.C761 20.20.20.3 RUN (20) Successfully plumbed
mobile rule 1 wcm: C8F9.F983.4260 , slot 1 802.1P = 0^M
*Sep 1 06:00:24.426: 0021.5C8C.C761 Sending IPv4 update to Controller
10.105.135.176 1 wcm: e
*Sep 1 06:00:24.426: 0021.5C8C.C761 Assigning Address 20.20.20.3 to mobile 1
wcm: 05.135.176
*Sep 1 06:00:24.426: PEM rcv processing msg Add SCB(3) 1 wcm: 20.20.3 to mobile
*Sep 1 06:00:24.426: 0021.5C8C.C761 20.20.20.3, auth_state 20 mmRole Local !!! 1
wcm: 135.176
*Sep 1 06:00:24.426: 0021.5C8C.C761 20.20.20.3, auth_state 20 mmRole Local,
updating wcdb not needed 1 wcm: 3.4260 , slot 1 802.1P = 0^M
*Sep 1 06:00:24.426: 0021.5C8C.C761 Tclas Plumb needed: 1 wcm: 0
*Sep 1 06:00:34.666: PEM rcv processing msg Del SCB(4) 1 wcm:
*Sep 1 06:00:34.864: PEM rcv processing msg Add SCB(3) 1 wcm:
*Sep 1 06:00:34.865: EPM: 1 wcm: Init feature, client handle a028c00000004c
session a600001f authz 5e00000d
*Sep 1 06:00:34.865: EPM: 1 wcm: Activate feature client handle a028c00000004c
sess a600001f authz 5e00000d

*Sep 1 06:00:34.865: PEM rcv processing msg Epm spi response(12) 1 wcm: 004c
sess a600001f authz 5e00000d
*Sep 1 06:00:34.865: EPM: 1 wcm: Policy enforcement - client handle
a028c00000004c session ca00000d authz 5e00000d
*Sep 1 06:00:34.865: EPM: 1 wcm: Netflow policy enforcement - client handle
a028c00000004c sess ca00000d authz 5e00000d msg_type 0 policy_status 0 attr len 0
*Sep 1 06:00:34.865: PEM rcv processing msg Epm spi response(12) 1 wcm: e
a028c00000004c sess ca00000d authz 5e00000d msg_type 0 policy_status 0 attr len 0
*Sep 1 06:00:52.802: PEM rcv processing msg Del SCB(4) 1 wcm: onse(12)
*Sep 1 06:00:53.015: PEM rcv processing msg Add SCB(3) 1 wcm:
*Sep 1 06:00:53.015: EPM: 1 wcm: Init feature, client handle a028c00000004c
session a600001f authz 5e00000d
*Sep 1 06:00:53.015: EPM: 1 wcm: Activate feature client handle a028c00000004c
sess a600001f authz 5e00000d
*Sep 1 06:00:53.015: PEM rcv processing msg Epm spi response(12) 1 wcm: 004c
sess a600001f authz 5e00000d
*Sep 1 06:00:53.016: EPM: 1 wcm: Policy enforcement - client handle
a028c00000004c session ca00000d authz 5e00000d
*Sep 1 06:00:53.016: EPM: 1 wcm: Netflow policy enforcement - client handle
a028c00000004c sess ca00000d authz 5e00000d msg_type 0 policy_status 0 attr len 0
*Sep 1 06:00:53.016: PEM rcv processing msg Epm spi response(12) 1 wcm: e
a028c00000004c sess ca00000d authz 5e00000d msg_type 0 policy_status 0 attr len 0
*Sep 1 06:01:18.829: PEM rcv processing msg Del SCB(4) 1 wcm: nse(12)
*Sep 1 06:01:19.037: PEM rcv processing msg Add SCB(3) 1 wcm:
*Sep 1 06:01:19.037: EPM: 1 wcm: Init feature, client handle a028c00000004c
session a600001f authz 5e00000d
*Sep 1 06:01:19.037: EPM: 1 wcm: Activate feature client handle a028c00000004c
sess a600001f authz 5e00000d
*Sep 1 06:01:19.037: PEM rcv processing msg Epm spi response(12) 1 wcm: 004c
sess a600001f authz 5e00000d
*Sep 1 06:01:19.037: EPM: 1 wcm: Policy enforcement - client handle
a028c00000004c session ca00000d authz 5e00000d
*Sep 1 06:01:19.037: EPM: 1 wcm: Netflow policy enforcement - client handle
a028c00000004c sess ca00000d authz 5e00000d msg_type 0 policy_status 0 attr len 0
*Sep 1 06:01:19.037: PEM rcv processing msg Epm spi response(12) 1 wcm: e
a028c00000004c sess ca00000d authz 5e00000d msg_type 0 policy_status 0 attr len 0
*Sep 1 06:01:20.108: 0021.5C8C.C761
Client stats update: 1 wcm: Time now in sec 1378015280, Last Acct Msg Sent at
1378015224 sec

[09/01/13 11:59:18.282 IST 1572 5933] 0021.5C8C.C761 Scheduling deletion of Mobile
Station: (callerId: 50) in 1 seconds
--More-- [09/01/13 11:59:18.282 IST 1573 5933] 0021.5C8C.C761
Disconnecting client due to switch of WLANs from 1(wpa2psk) to 4(EAPFAST)
[09/01/13 11:59:19.174 IST 1574 5933] 0021.5C8C.C761 apfMsExpireCallback
(apf_ms.c:664) Expiring Mobile!
[09/01/13 11:59:19.174 IST 1575 5933] 0021.5C8C.C761 apfMsExpireMobileStation
(apf_ms.c:6953) Changing state for mobile 0021.5C8C.C761 on AP C8F9.F983.4260
from Associated to Disassociated
[09/01/13 11:59:19.174 IST 1576 5933] 0021.5C8C.C761 lXA: Cleaning up dot1x
[09/01/13 11:59:19.174 IST 1577 5933] 0021.5C8C.C761 lXA: Session Manager Call to
cleanup session for Client capwap iif_id b6818000000038
[09/01/13 11:59:19.174 IST 1578 5933] 0021.5C8C.C761 Sent Deauthenticate to mobile
on BSSID C8F9.F983.4260 slot 1(caller apf_ms.c:7036)
[09/01/13 11:59:19.174 IST 1579 5933] 0021.5C8C.C761 AAAS: acct method list NOT
configured for WLAN 1, accounting skipped
[09/01/13 11:59:19.174 IST 157a 5933] 0021.5C8C.C761 AAAS: freeing AAA accounting
session
[09/01/13 11:59:19.174 IST 157b 5933] 0021.5C8C.C761 apfMsAssoStateDec
[09/01/13 11:59:19.174 IST 157c 5933] 0021.5C8C.C761 apfMsExpireMobileStation
(apf_ms.c:7092) Changing state for mobile 0021.5C8C.C761 on AP C8F9.F983.4260
from Disassociated to Idle
[09/01/13 11:59:19.174 IST 157d 33] ACCESS-CORE-SM-CLIENT-SPI-NOTF:

```
[0021.5c8c.c761, Cal] Session stop request received for Client[1] MAC
[0021.5c8c.c761] SID [] Disc
cause [(default)/0]
--More--          [09/01/13 11:59:19.174 IST 157e 173] ACCESS-CORE-SM-NOTF:
[0021.5c8c.c761, Cal] Received session event 'SESSION_STOP' from client
[09/01/13 11:59:19.174 IST 157f 5933] 0021.5C8C.C761 Incrementing the
Reassociation Count 1 for client (of interface VLAN0020)
[09/01/13 11:59:19.174 IST 1580 5933] 0021.5C8C.C761 Clearing Address 20.20.20.3
on mobile
[09/01/13 11:59:19.174 IST 1581 173] ACCESS-CORE-SM-NOTF: [0021.5c8c.c761, Cal]
Session stop for 0021.5c8c.c761 - Audit ID (none), reason (default)/0
[09/01/13 11:59:19.174 IST 1582 173] ACCESS-CORE-SM-NOTF: [0021.5c8c.c761, Cal]
Unlocking 0xF3000023 for deletion
[09/01/13 11:59:19.174 IST 1583 173] ACCESS-CORE-SM-NOTF: [0021.5c8c.c761, Cal]
Processing SM CB request for 0xF3000023: Event: Pre-Disconnect notification t
[09/01/13 11:59:19.174 IST 1584 5933] 0021.5C8C.C761 apfMsRunStateDec
[09/01/13 11:59:19.174 IST 1585 173] ACCESS-CORE-SM-NOTF: [0021.5c8c.c761, Cal]
Predisconnect notification - teardown complete for 0xF3000023(0021.5c8c.c761)
[09/01/13 11:59:19.174 IST 1586 173] ACCESS-CORE-SM-NOTF: [0021.5c8c.c761, Cal]
Session teardown completing, deleting context
[09/01/13 11:59:19.174 IST 1587 173] ACCESS-CORE-SM-NOTF: [0021.5c8c.c761, Cal]
Signalling "pre" delete for client 0021.5c8c.c761 / 0xF3000023
[09/01/13 11:59:19.174 IST 1588 5933] 0021.5C8C.C761 WCDB_AUTH: Adding opt82 len 0
[09/01/13 11:59:19.174 IST 1589 5933] 0021.5C8C.C761 WCDB_CHANGE: Suppressing SPI
(client pending deletion) pemstate 7 state LEARN_IP(2) vlan 20 client_id
0x8006400000004e mob=Local(1) ackflag 2 dropd 0, delete 1
--More--          [09/01/13 11:59:19.174 IST 158a 173] ACCESS-CORE-SM-NOTF:
[0021.5c8c.c761, Cal] Deleted record - hdl 0xF3000023. 2 session(s) remain on IDB.
[09/01/13 11:59:19.174 IST 158b 173] ACCESS-CORE-SM-NOTF: [0021.5c8c.c761, Cal]
Processing SM CB request for 0xF3000023: Event: Client disconnect notificatio
[09/01/13 11:59:19.174 IST 158c 173] ACCESS-CORE-SM-NOTF: [0021.5c8c.c761, Cal]
AAA-ID 0x0000001C for 0021.5c8c.c761 not freed, as externally generated
[09/01/13 11:59:19.174 IST 158d 173] ACCESS-CORE-SM-NOTF: [0021.5c8c.c761, Cal]
Removed policy (tgt 0x00000000) from session (hdl 0xF3000023)
[09/01/13 11:59:19.174 IST 158e 173] ACCESS-CORE-SM-NOTF: [0021.5c8c.c761, Cal]
Unblock events for 0021.5c8c.c761.
[09/01/13 11:59:19.174 IST 158f 173] ACCESS-CORE-SM-NOTF: [0021.5c8c.c761, Cal]
AAA-ID 0x0000001C for 0021.5c8c.c761 not freed, as externally generated
[09/01/13 11:59:19.174 IST 1590 173] ACCESS-CORE-SM-NOTF: [0021.5c8c.c761, Cal]
Freed Auth Manager context 0xF3000023
[09/01/13 11:59:19.174 IST 1591 173] ACCESS-CORE-SM-NOTF: [0021.5c8c.c761, Cal]
Signalling "post" delete for client in domain DATA
[09/01/13 11:59:19.174 IST 1592 5933] 0021.5C8C.C761 Sending SPI
spi_epm_epm_terminate_session successfull
[09/01/13 11:59:19.175 IST 1593 5933] 0021.5C8C.C761 Sending SPI
spi_epm_epm_terminate_session successfull
[09/01/13 11:59:19.175 IST 1594 5933] 0021.5C8C.C761 Deleting wireless client;
Reason code 0, Preset 1, AAA cause 1
[09/01/13 11:59:19.175 IST 1595 5933] 0021.5C8C.C761 WCDB_DEL: Successfully sent
[09/01/13 11:59:19.175 IST 1596 5933] 0021.5C8C.C761 Expiring mobile state delete
--More--          [09/01/13 11:59:19.175 IST 1597 190] [WCDB] ==Delete event for
Wireless client (0021.5c8c.c761) client id (0x8006400000004e) vlan 20 auth_state
RUN mob_state LOCAL flags 2
[09/01/13 11:59:19.175 IST 1598 190] [WCDB] wcdb_client_mcast_update_notify: add =
0, port_update = 0, delete = 1
[09/01/13 11:59:19.175 IST 1599 190] ACCESS-CORE-SM-FEATURE-WIRED_TUNNEL-NOT:
[0021.5c8c.c761] Client 0021.5c8c.c761 is not tunnel client..Return
[09/01/13 11:59:19.176 IST 159a 190] [WCDB] wcdb_ffcp_wcdb_client_delete_notify:
client (0021.5c8c.c761) id 0x8006400000004e ffcp delete
[09/01/13 11:59:19.178 IST 159b 33] [WCDB] wcdb_ffcp_cb: client (0021.5c8c.c761)
client (0x8006400000004e): FFCP operation (DELETE) return code (0)
[09/01/13 11:59:19.178 IST 159c 33] [WCDB] wcdb_send_delete_notify_callback_event:
Delete ACK sent to WCM after confirming clientLe is deleted for mac 0021.5c8c.c761
[09/01/13 11:59:19.178 IST 159d 33] [WCDB] wcdb_client_delete_actual: WCDB DB
```

client 0021.5c8c.c761 is being deleted
[09/01/13 11:59:19.178 IST 159e 33] [WCDB] wcdb_client_delete_actual Client delete notification is sent to DHCP snooping: host mac: 0021.5c8c.c761, IP: 20.20.20.3
[09/01/13 11:59:19.178 IST 159f 33] [WCDB] wcdb_client_delete_actual: Exit: WCDB DB client 0021.5c8c.c761 is being deleted
[09/01/13 11:59:19.178 IST 15a0 186] ACCESS-CORE-SM-CLIENT-IPDT-ERR: [0021.5c8c.c761, Cal] No session for MAC 0021.5c8c.c761
[09/01/13 11:59:19.178 IST 15a1 5933] 0021.5C8C.C761 WCDB SPI response msg handler client code 1 mob state 1
--More-- [09/01/13 11:59:19.178 IST 15a2 5933] 0021.5C8C.C761
apfProcessWcdbClientDelete: Delete ACK from WCDB.
[09/01/13 11:59:19.178 IST 15a3 5933] 0021.5C8C.C761 WCDB_DELACK: wcdbAckRecvdFlag updated
[09/01/13 11:59:19.178 IST 15a4 5933] 0021.5C8C.C761 Invoked platform delete and cleared handle
[09/01/13 11:59:19.178 IST 15a5 5933] 0021.5C8C.C761 apfMslxStateDec
[09/01/13 11:59:19.178 IST 15a6 5933] 0021.5C8C.C761 Deleting mobile on AP C8F9.F983.4260 (1)
[09/01/13 11:59:19.178 IST 15a7 5933] 0021.5C8C.C761 1XA: Cleaning up dot1x
[09/01/13 11:59:19.178 IST 15a8 5933] 0021.5C8C.C761 Unlinked and freed mscb
[09/01/13 11:59:19.361 IST 15a9 5933] 0021.5C8C.C761 Adding mobile on LWAPP AP C8F9.F983.4260 (1)
[09/01/13 11:59:19.361 IST 15aa 5933] 0021.5C8C.C761 Association received from mobile on AP C8F9.F983.4260
[09/01/13 11:59:19.361 IST 15ab 5933] 0021.5C8C.C761 qos upstream policy is unknown and downstream policy is unknown
[09/01/13 11:59:19.361 IST 15ac 5933] 0021.5C8C.C761 apChanged 0 wlanChanged 0 mscb ipAddr 0.0.0.0, apf RadiusOverride 0x0, numIPv6Addr=0
[09/01/13 11:59:19.361 IST 15ad 5933] 0021.5C8C.C761 Applying WLAN policy on MSCB.
[09/01/13 11:59:19.361 IST 15ae 5933] 0021.5C8C.C761 Applying WLAN ACL policies to client
[09/01/13 11:59:19.361 IST 15af 5933] 0021.5C8C.C761 No Interface ACL used for Wireless client in WCM(NGWC)
--More-- [09/01/13 11:59:19.361 IST 15b0 5933] 0021.5C8C.C761 Applying site-specific IPv6 override for station 0021.5C8C.C761 - vapId 4, site 'default-group', interface 'VLAN0020'
[09/01/13 11:59:19.361 IST 15b1 5933] 0021.5C8C.C761 Applying local bridging Interface Policy for station 0021.5C8C.C761 - vlan 20, interface 'VLAN0020'
[09/01/13 11:59:19.361 IST 15b2 5933] 0021.5C8C.C761 STA - rates (8):
140 18 152 36 176 72 96 108 0 0 0 0 0 0 0
[09/01/13 11:59:19.361 IST 15b3 5933] 0021.5C8C.C761 Processing RSN IE type 48, length 22 for mobile 0021.5C8C.C761
[09/01/13 11:59:19.361 IST 15b4 5933] 0021.5C8C.C761 Received RSN IE with 0 PMKIDs from mobile 0021.5C8C.C761
[09/01/13 11:59:19.361 IST 15b5 5933] 0021.5C8C.C761 1XK: Looking for BSSID C8F9.F983.426C in PMKID cache
[09/01/13 11:59:19.361 IST 15b6 5933] 0021.5C8C.C761 1XK: Set Link Secure: 0
[09/01/13 11:59:19.361 IST 15b7 5933] 0021.5C8C.C761 new capwap_wtp_iif_id b6818000000038, sm capwap_wtp_iif_id 0
[09/01/13 11:59:19.361 IST 15b8 5933] 0021.5C8C.C761 WCDB_ADD: Adding opt82 len 0
[09/01/13 11:59:19.361 IST 15b9 5933] 0021.5C8C.C761 WCDB_ADD: ssid EAPFAST bssid C8F9.F983.4260 vlan 20 auth=ASSOCIATION(0) wlan(ap-group/global) 4/4 client 0 assoc 3 mob=Unassoc(0) radio 1 m_vlan 20 ip 0.0.0.0 src 0xb6818000000038 dst 0x0 cid 0x84fd0000000050 glob rsc id 16dhcpsrv 0.0.0.0
[09/01/13 11:59:19.361 IST 15ba 5933] 0021.5C8C.C761 Not Using WMM Compliance code qosCap 00
--More-- [09/01/13 11:59:19.361 IST 15bb 5933] 0021.5C8C.C761
apfMsAssoStateInc
[09/01/13 11:59:19.361 IST 15bc 5933] 0021.5C8C.C761 apfPemAddUser2 (apf_policy.c:161) Changing state for mobile 0021.5C8C.C761 on AP C8F9.F983.4260 from Idle to Associated
[09/01/13 11:59:19.361 IST 15bd 5933] 0021.5C8C.C761 Stopping deletion of Mobile Station: (callerId: 48)
[09/01/13 11:59:19.361 IST 15be 5933] 0021.5C8C.C761 Ms Timeout = 0, Session

```
Timeout = 1800
[09/01/13 11:59:19.361 IST 15bf 5933] 0021.5C8C.C761 Sending Assoc Response to
station on BSSID C8F9.F983.4260 (status 0) ApVapId 4 Slot 1
[09/01/13 11:59:19.362 IST 15c0 5933] 0021.5C8C.C761 apfProcessAssocReq
(apf_80211.c:5260) Changing state for mobile 0021.5C8C.C761 on AP
C8F9.F983.4260 from Associated to Associated
[09/01/13 11:59:19.363 IST 15c1 190] [WCDB] ==Add event: type Regular Wireless
client (0021.5c8c.c761) client id (0x84fd0000000050) client index (16) vlan (20)
auth_state (ASSOCIATION) mob_state (INIT)
[09/01/13 11:59:19.363 IST 15c2 190] [WCDB] ===intf src/dst (0xb6818000000038)/
(0x0) radio_id (1) p2p_state (P2P_BLOCKING_DISABLE) switch/asic (1/0)
[09/01/13 11:59:19.367 IST 15c3 5933] 0021.5C8C.C761 1XA: Initiating
authentication
[09/01/13 11:59:19.368 IST 15c4 5933] 0021.5C8C.C761 1XA: Setting reauth timeout
to 1800 seconds
--More--
*Sep 1 06:01:59.543: PEM rcv processing msg Del SCB(4) 1 wcm: Time now in sec
1378015280, Last Ac.D^Iwsg Sent at 137801522t! w\2105HnJ^Iw_status 0 attr len
^G$8\227v^K
*Sep 1 06:01:59.547: WCDB_IIF: 1 wcm: Ack Message ID: 0x973c000000004f code 1003
*Sep 1 06:02:50.119: 0021.5C8C.C761
Client stats update: 1 wcm: Time now in sec 1378015370, Last Acct Msg Sent at
1378015224 sec
*Sep 1 06:02:50.119: 0021.5C8C.C761 Requested to send acct interim update request
msg to APF task for client 0: 1 wcm: 21:5c:8c:c7:61 [09/01/13 11:59:19.368
IST 15c5 5933] 0021.5C8C.C761 1XK: Set Link Secure: 0
--More-- [09/01/13 11:59:19.368 IST 15c6 5933] 0021.5C8C.C761 1XA:
Allocated uid 30
[09/01/13 11:59:19.368 IST 15c7 5933] 0021.5C8C.C761 1XA: Calling Auth Mgr to
authenticate client 84fd0000000050 uid 30
--More-- [09/01/13 11:59:19.368 IST 15c8 5933] 0021.5C8C.C761 1XA:
Session Start from wireless client
--More--

[09/01/13 11:59:19.368 IST 15c9 5933] 0021.5C8C.C761 Session Manager Call Client
84fd0000000050, uid 30, capwap id b6818000000038,Flag 0, Audit-Session ID
0a6987b05222d7f30000001e, method list ACS
[09/01/13 11:59:19.368 IST 15ca 33] ACCESS-CORE-SM-CLIENT-SPI-NOTF:
[0021.5c8c.c761, Ca1] Session start request from Client[1] for 0021.5c8c.c761
(method: Dot1X, method
list: ACS, aaa id: 0x0000001E)
[09/01/13 11:59:19.368 IST 15cb 33] ACCESS-CORE-SM-CLIENT-SPI-NOTF:
[0021.5c8c.c761, Ca1] - client iif_id: 84FD0000000050, session ID:
0a6987b05222d7f30000001e for
0021.5c8c.c761
[09/01/13 11:59:19.368 IST 15cc 33] ACCESS-CORE-SM-CLIENT-SPI-NOTF:
[0021.5c8c.c761, Ca1] - eap profile: none
[09/01/13 11:59:19.368 IST 15cd 173] ACCESS-CORE-SM-NOTF: [0021.5c8c.c761, Ca1]
Received session event 'SESSION_START' from client
[09/01/13 11:59:19.368 IST 15ce 173] ACCESS-CORE-SM-NOTF: [0021.5c8c.c761, Ca1]
Session start for 0021.5c8c.c761
[09/01/13 11:59:19.368 IST 15cf 173] ACCESS-CORE-SM-NOTF: [0021.5c8c.c761, Ca1]
Found 2 sessions on this port, checking host limit
[09/01/13 11:59:19.368 IST 15d0 173] ACCESS-CORE-SM-NOTF: [0021.5c8c.c761, Ca1]
Using stored AAA ID 0x0000001E
[09/01/13 11:59:19.368 IST 15d1 173] ACCESS-CORE-SM-NOTF: [0021.5c8c.c761, Ca1]
Retrieved Client IIF ID 84FD0000000050
[09/01/13 11:59:19.368 IST 15d2 173] ACCESS-CORE-SM-NOTF: [0021.5c8c.c761, Ca1]
Allocated new Auth Manager context (handle 0x32000026)
--More-- [09/01/13 11:59:19.368 IST 15d3 173] ACCESS-CORE-SM-DEB:
[0021.5c8c.c761, Ca1] Client 0021.5c8c.c761, Initialising Method state to
'Not run'
[09/01/13 11:59:19.368 IST 15d4 173] ACCESS-CORE-SM-DEB: [0021.5c8c.c761, Ca1]
Adding method Session Mgr IPDT Shim to runnable list for session 0x32000026
```

[09/01/13 11:59:19.368 IST 15d5 173] ACCESS-CORE-SM-DEB: [0021.5c8c.c761, Ca1] Client 0021.5c8c.c761, Initialising Method SVM state to 'Not run'

[09/01/13 11:59:19.368 IST 15d6 173] ACCESS-CORE-SM-DEB: [0021.5c8c.c761, Ca1] Adding method SVM to runnable list for session 0x32000026

[09/01/13 11:59:19.368 IST 15d7 173] ACCESS-CORE-SM-DEB: [0021.5c8c.c761, Ca1] Client 0021.5c8c.c761, Initialising Method state to 'Not run'

[09/01/13 11:59:19.368 IST 15d8 173] ACCESS-CORE-SM-DEB: [0021.5c8c.c761, Ca1] Adding method Switch PI to runnable list for session 0x32000026

[09/01/13 11:59:19.368 IST 15d9 173] ACCESS-CORE-SM-DEB: [0021.5c8c.c761, Ca1] Client 0021.5c8c.c761, Initialising Method state to 'Not run'

[09/01/13 11:59:19.368 IST 15da 173] ACCESS-CORE-SM-DEB: [0021.5c8c.c761, Ca1] Adding method Session Mgr SISF Shim to runnable list for session 0x32000026

[09/01/13 11:59:19.368 IST 15db 173] ACCESS-CORE-SM-DEB: [0021.5c8c.c761, Ca1] Client 0021.5c8c.c761, Initialising Method iaf state to 'Not run'

[09/01/13 11:59:19.368 IST 15dc 173] ACCESS-CORE-SM-DEB: [0021.5c8c.c761, Ca1] Adding method iaf to runnable list for session 0x32000026

[09/01/13 11:59:19.368 IST 15dd 173] ACCESS-CORE-SM-DEB: [0021.5c8c.c761, Ca1] Client 0021.5c8c.c761, Initialising Method Tag state to 'Not run'

[09/01/13 11:59:19.368 IST 15de 173] ACCESS-CORE-SM-DEB: [0021.5c8c.c761, Ca1] Adding method Tag to runnable list for session 0x32000026

--More-- [09/01/13 11:59:19.368 IST 15df 173] ACCESS-CORE-SM-DEB: [0021.5c8c.c761, Ca1] Client 0021.5c8c.c761, Initialising Method dct state to 'Not run'

[09/01/13 11:59:19.368 IST 15e0 173] ACCESS-CORE-SM-DEB: [0021.5c8c.c761, Ca1] Adding method dct to runnable list for session 0x32000026

[09/01/13 11:59:19.368 IST 15e1 173] ACCESS-CORE-SM-DEB: [0021.5c8c.c761, Ca1] Client 0021.5c8c.c761, Initialising Method SM Reauth Plugin state to 'Not run'

[09/01/13 11:59:19.368 IST 15e2 173] ACCESS-CORE-SM-DEB: [0021.5c8c.c761, Ca1] Adding method SM Reauth Plugin to runnable list for session 0x32000026

[09/01/13 11:59:19.368 IST 15e3 173] ACCESS-CORE-SM-DEB: [0021.5c8c.c761, Ca1] Client 0021.5c8c.c761, Initialising Method SM Accounting Feature state to 'Not run'

[09/01/13 11:59:19.368 IST 15e4 173] ACCESS-CORE-SM-DEB: [0021.5c8c.c761, Ca1] Adding method SM Accounting Feature to runnable list for session 0x32000026

[09/01/13 11:59:19.368 IST 15e5 173] ACCESS-CORE-SM-DEB: [0021.5c8c.c761, Ca1] Client 0021.5c8c.c761, Initialising Method state to 'Not run'

[09/01/13 11:59:19.368 IST 15e6 173] ACCESS-CORE-SM-DEB: [0021.5c8c.c761, Ca1] Adding method Session Mgr FFCP Shim to runnable list for session 0x32000026

[09/01/13 11:59:19.368 IST 15e7 173] ACCESS-CORE-SM-DEB: [0021.5c8c.c761, Ca1] Client 0021.5c8c.c761, Initialising Method state to 'Not run'

[09/01/13 11:59:19.368 IST 15e8 173] ACCESS-CORE-SM-DEB: [0021.5c8c.c761, Ca1] Adding method AIM to runnable list for session 0x32000026

[09/01/13 11:59:19.368 IST 15e9 173] ACCESS-CORE-SM-DEB: [0021.5c8c.c761, Ca1] Client 0021.5c8c.c761, Initialising Method dotlx state to 'Not run'

[09/01/13 11:59:19.368 IST 15ea 173] ACCESS-CORE-SM-DEB: [0021.5c8c.c761, Ca1] Adding method dotlx to runnable list for session 0x32000026

--More-- [09/01/13 11:59:19.368 IST 15eb 173] ACCESS-CORE-SM-DEB: [0021.5c8c.c761, Ca1] Client 0021.5c8c.c761, Initialising Method mab state to 'Not run'

[09/01/13 11:59:19.368 IST 15ec 173] ACCESS-CORE-SM-DEB: [0021.5c8c.c761, Ca1] Adding method mab to runnable list for session 0x32000026

[09/01/13 11:59:19.368 IST 15ed 173] ACCESS-CORE-SM-DEB: [0021.5c8c.c761, Ca1] Client 0021.5c8c.c761, Initialising Method webauth state to 'Not run'

[09/01/13 11:59:19.368 IST 15ee 173] ACCESS-CORE-SM-DEB: [0021.5c8c.c761, Ca1] Adding method webauth to runnable list for session 0x32000026

[09/01/13 11:59:19.368 IST 15ef 173] ACCESS-CORE-SM-NOTF: [0021.5c8c.c761, Ca1] Processing SM CB request for 0x32000026: Event: New client notification (201)

[09/01/13 11:59:19.368 IST 15f0 173] ACCESS-CORE-SM-DEB: [0021.5c8c.c761, Ca1] Create attr list, session 0x32000026:

[09/01/13 11:59:19.368 IST 15f1 173] ACCESS-CORE-SM-DEB: [0021.5c8c.c761, Ca1] - adding MAC 0021.5c8c.c761

[09/01/13 11:59:19.368 IST 15f2 173] ACCESS-CORE-SM-DEB: [0021.5c8c.c761, Ca1] - adding Swidb 0x99E27F00

[09/01/13 11:59:19.368 IST 15f3 173] ACCESS-CORE-SM-DEB: [0021.5c8c.c761, Ca1] - adding AAA_ID=1E

[09/01/13 11:59:19.368 IST 15f4 173] ACCESS-CORE-SM-DEB: [0021.5c8c.c761, Ca1] - adding Audit_sid=0a6987b05222d7f30000001e
[09/01/13 11:59:19.368 IST 15f5 173] ACCESS-CORE-SM-DEB: [0021.5c8c.c761, Ca1] - adding IIF ID=0x84FD0000000050
[09/01/13 11:59:19.368 IST 15f6 173] ACCESS-CORE-SM-CLIENT-IPDT-NOTF: [0021.5c8c.c761, Ca1] NewClient: No entry for 0021.5c8c.c761. session 0x32000026 --More--
[09/01/13 11:59:19.368 IST 15f7 173] ACCESS-CORE-SM-NOTF: [0021.5c8c.c761, Ca1] New client 0021.5c8c.c761 - client handle 0x00000001 for SVM
[09/01/13 11:59:19.368 IST 15f8 173] ACCESS-CORE-SM-CLIENT-SISF-NOTF: [0021.5c8c.c761, Ca1] No IPv6 binding found for 0021.5c8c.c761(0x32000026)
[09/01/13 11:59:19.368 IST 15f9 173] ACCESS-CORE-SM-NOTF: [0021.5c8c.c761, Ca1] Added record to DB - hdl 0x32000026 / 0021.5c8c.c761. 3 session(s) on IDB
[09/01/13 11:59:19.368 IST 15fa 173] ACCESS-CORE-SM-DEB: [0021.5c8c.c761, Ca1] Add record - adding MAC 0021.5c8c.c761
[09/01/13 11:59:19.368 IST 15fb 173] ACCESS-CORE-SM-DEB: [0021.5c8c.c761, Ca1] Add record - adding SWIDB Capwap1
[09/01/13 11:59:19.368 IST 15fc 173] ACCESS-CORE-SM-DEB: [0021.5c8c.c761, Ca1] Add record - adding AAA-ID 1E
[09/01/13 11:59:19.368 IST 15fd 173] ACCESS-CORE-SM-DEB: [0021.5c8c.c761, Ca1] Add record - adding AUDIT-ID 0a6987b05222d7f30000001e
[09/01/13 11:59:19.368 IST 15fe 173] ACCESS-CORE-SM-DEB: [0021.5c8c.c761, Ca1] Add record - adding IIF-ID 0x84FD0000000050
[09/01/13 11:59:19.368 IST 15ff 173] ACCESS-CORE-SM-DEB: [0021.5c8c.c761, Ca1] Add record - adding TARGET_SCOPE (Client)
[09/01/13 11:59:19.368 IST 1600 173] ACCESS-CORE-SM-NOTF: [0021.5c8c.c761, Ca1] No policy handle to bind session
[09/01/13 11:59:19.368 IST 1601 173] ACCESS-CORE-SM-DEB: [0021.5c8c.c761, Ca1] Create attr list, session 0x32000026:
[09/01/13 11:59:19.368 IST 1602 173] ACCESS-CORE-SM-DEB: [0021.5c8c.c761, Ca1] - adding MAC 0021.5c8c.c761 --More--
[09/01/13 11:59:19.368 IST 1603 173] ACCESS-CORE-SM-DEB: [0021.5c8c.c761, Ca1] - adding Swidb 0x99E27F00
[09/01/13 11:59:19.368 IST 1604 173] ACCESS-CORE-SM-DEB: [0021.5c8c.c761, Ca1] - adding AAA_ID=1E
[09/01/13 11:59:19.368 IST 1605 173] ACCESS-CORE-SM-DEB: [0021.5c8c.c761, Ca1] - adding Audit_sid=0a6987b05222d7f30000001e
[09/01/13 11:59:19.368 IST 1606 173] ACCESS-CORE-SM-DEB: [0021.5c8c.c761, Ca1] - adding IIF ID=0x84FD0000000050
[09/01/13 11:59:19.368 IST 1607 173] ACCESS-CORE-SM-NOTF: [0021.5c8c.c761, Ca1] Processing SM CB request for 0x32000026: Event: Start a method (200)
[09/01/13 11:59:19.368 IST 1608 173] ACCESS-METHOD-DOT1X-DEB: [0021.5c8c.c761, Ca1] 0xA100000F: initialising
[09/01/13 11:59:19.368 IST 1609 173] ACCESS-METHOD-DOT1X-DEB: [0021.5c8c.c761, Ca1] 0xA100000F: disconnected
[09/01/13 11:59:19.368 IST 160a 173] ACCESS-METHOD-DOT1X-DEB: [0021.5c8c.c761, Ca1] 0xA100000F: entering restart
[09/01/13 11:59:19.368 IST 160b 173] ACCESS-METHOD-DOT1X-NOTF: [0021.5c8c.c761, Ca1] Override cfg - MAC 0021.5c8c.c761 - profile (none)
[09/01/13 11:59:19.368 IST 160c 173] ACCESS-METHOD-DOT1X-NOTF: [0021.5c8c.c761, Ca1] Override cfg - SuppTimeout 30s, ReAuthMax 2, MaxReq 2, TxPeriod 30s
[09/01/13 11:59:19.368 IST 160d 173] ACCESS-METHOD-DOT1X-NOTF: [0021.5c8c.c761, Ca1] Sending create new context event to EAP for 0xA100000F (0021.5c8c.c761)
[09/01/13 11:59:19.368 IST 160e 173] ACCESS-METHOD-DOT1X-DEB: [0021.5c8c.c761, Ca1] 0xA100000F: entering init state --More--
[09/01/13 11:59:19.368 IST 160f 173] ACCESS-METHOD-DOT1X-DEB: [0021.5c8c.c761, Ca1] 0xA100000F:entering idle state
[09/01/13 11:59:19.368 IST 1610 173] ACCESS-METHOD-DOT1X-NOTF: [0021.5c8c.c761, Ca1] Created a client entry (0xA100000F)
[09/01/13 11:59:19.368 IST 1611 173] ACCESS-METHOD-DOT1X-NOTF: [0021.5c8c.c761, Ca1] Dot1x authentication started for 0xA100000F (0021.5c8c.c761)
[09/01/13 11:59:19.368 IST 1612 173] ACCESS-CORE-SM-NOTF: [0021.5c8c.c761, Ca1] Client 0021.5c8c.c761, Context changing state from 'Idle' to 'Running'
[09/01/13 11:59:19.368 IST 1613 173] ACCESS-CORE-SM-NOTF: [0021.5c8c.c761, Ca1] Client 0021.5c8c.c761, Method dot1x changing state from 'Not run' to 'Running'

[09/01/13 11:59:19.368 IST 1614 173] ACCESS-CORE-SM-NOTF: [0021.5c8c.c761, Cal] SM will not apply policy for SESSION_STARTED on 0x32000026 / 0021.5c8c.c761

[09/01/13 11:59:19.368 IST 1615 173] ACCESS-CORE-SM-NOTF: [0021.5c8c.c761, Cal] Processing default action(s) for event SESSION_STARTED for session 0x32000026.

[09/01/13 11:59:19.368 IST 1616 179] ACCESS-CORE-SM-CLIENT-DOT11-NOTF: [0021.5c8c.c761, Cal] DB alloc for 0021.5c8c.c761

[09/01/13 11:59:19.368 IST 1617 179] ACCESS-CORE-SM-CLIENT-DOT11-NOTF: [0021.5c8c.c761, Cal] Dot11 params, bssid: c8f9.f983.4260, radio id: 1, wlan id: 4, assoc id: 3, ssid: EAPFAST

[09/01/13 11:59:19.368 IST 1618 179] ACCESS-CORE-SM-CLIENT-DOT11-NOTF: [0021.5c8c.c761, Cal] Dot11 params, wlan bssid set to: c8f9.f983.426c

[09/01/13 11:59:19.368 IST 1619 262] ACCESS-METHOD-DOT1X-DEB: [0021.5c8c.c761, Cal] Posting !EAP_RESTART on Client 0xA100000F

[09/01/13 11:59:19.368 IST 161a 262] ACCESS-METHOD-DOT1X-DEB: [0021.5c8c.c761, Cal] 0xA100000F:enter connecting state

--More-- [09/01/13 11:59:19.368 IST 161b 262] ACCESS-METHOD-DOT1X-DEB: [0021.5c8c.c761, Cal] 0xA100000F: restart connecting

[09/01/13 11:59:19.368 IST 161c 262] ACCESS-METHOD-DOT1X-DEB: [0021.5c8c.c761, Cal] Posting RX_REQ on Client 0xA100000F

[09/01/13 11:59:19.368 IST 161d 262] ACCESS-METHOD-DOT1X-DEB: [0021.5c8c.c761, Cal] 0xA100000F: authenticating state entered

[09/01/13 11:59:19.368 IST 161e 262] ACCESS-METHOD-DOT1X-DEB: [0021.5c8c.c761, Cal] 0xA100000F:connecting authenticating action

[09/01/13 11:59:19.368 IST 161f 270] ACCESS-METHOD-DOT1X-DEB: [0021.5c8c.c761, Cal] Posting AUTH_START for 0xA100000F

[09/01/13 11:59:19.368 IST 1620 270] ACCESS-METHOD-DOT1X-DEB: [0021.5c8c.c761, Cal] 0xA100000F:entering request state

[09/01/13 11:59:19.368 IST 1621 270] ACCESS-METHOD-DOT1X-NOTF: [0021.5c8c.c761, Cal] Sending EAPOL packet

[09/01/13 11:59:19.368 IST 1622 270] ACCESS-METHOD-DOT1X-INFO: [0021.5c8c.c761, Cal] Platform changed src mac of EAPOL packet

[09/01/13 11:59:19.368 IST 1623 270] ACCESS-METHOD-DOT1X-INFO: [0021.5c8c.c761, Cal] EAPOL packet sent to client 0xA100000F

[09/01/13 11:59:19.368 IST 1624 270] ACCESS-METHOD-DOT1X-DEB: [0021.5c8c.c761, Cal] 0xA100000F:idle request action

[09/01/13 11:59:19.500 IST 1625 176] ACCESS-METHOD-DOT1X-INFO: [0021.5c8c.c761, Cal] Queuing an EAPOL pkt on Authenticator Q

[09/01/13 11:59:19.500 IST 1626 173] ACCESS-CORE-SM-NOTF: [0021.5c8c.c761, Cal] SM will not apply policy for RX_METHOD_AGENT_FOUND on 0x32000026 / 0021.5c8c.c761

--More-- [09/01/13 11:59:19.500 IST 1627 173] ACCESS-CORE-SM-NOTF: [0021.5c8c.c761, Cal] Processing default action(s) for event RX_METHOD_AGENT_FOUND for session 0x32000026.

[09/01/13 11:59:19.500 IST 1628 270] ACCESS-METHOD-DOT1X-DEB: [0021.5c8c.c761, Cal] Posting EAPOL_EAP for 0xA100000F

[09/01/13 11:59:19.500 IST 1629 270] ACCESS-METHOD-DOT1X-DEB: [0021.5c8c.c761, Cal] 0xA100000F:entering response state

[09/01/13 11:59:19.500 IST 162a 270] ACCESS-METHOD-DOT1X-NOTF: [0021.5c8c.c761, Cal] Response sent to the server from 0xA100000F

[09/01/13 11:59:19.500 IST 162b 270] ACCESS-METHOD-DOT1X-DEB: [0021.5c8c.c761, Cal] 0xA100000F:request response action

[09/01/13 11:59:19.503 IST 162c 270] ACCESS-METHOD-DOT1X-DEB: [0021.5c8c.c761, Cal] Posting EAP_REQ for 0xA100000F

[09/01/13 11:59:19.503 IST 162d 270] ACCESS-METHOD-DOT1X-DEB: [0021.5c8c.c761, Cal] 0xA100000F:exiting response state

[09/01/13 11:59:19.503 IST 162e 270] ACCESS-METHOD-DOT1X-DEB: [0021.5c8c.c761, Cal] 0xA100000F:entering request state

[09/01/13 11:59:19.503 IST 162f 270] ACCESS-METHOD-DOT1X-NOTF: [0021.5c8c.c761, Cal] Sending EAPOL packet

[09/01/13 11:59:19.503 IST 1630 270] ACCESS-METHOD-DOT1X-INFO: [0021.5c8c.c761, Cal] Platform changed src mac of EAPOL packet

[09/01/13 11:59:19.503 IST 1631 270] ACCESS-METHOD-DOT1X-INFO: [0021.5c8c.c761, Cal] EAPOL packet sent to client 0xA100000F

[09/01/13 11:59:19.503 IST 1632 270] ACCESS-METHOD-DOT1X-DEB: [0021.5c8c.c761, Cal]

0xA100000F:response request action
--More-- [09/01/13 11:59:19.525 IST 1633 176] ACCESS-METHOD-DOT1X-INFO:
[0021.5c8c.c761, Cal] Queuing an EAPOL pkt on Authenticator Q
[09/01/13 11:59:19.525 IST 1634 270] ACCESS-METHOD-DOT1X-DEB: [0021.5c8c.c761, Cal]
Posting EAPOL_EAP for 0xA100000F
[09/01/13 11:59:19.525 IST 1635 270] ACCESS-METHOD-DOT1X-DEB: [0021.5c8c.c761, Cal]
0xA100000F:entering response state
[09/01/13 11:59:19.525 IST 1636 270] ACCESS-METHOD-DOT1X-NOTF: [0021.5c8c.c761, Cal]
Response sent to the server from 0xA100000F
[09/01/13 11:59:19.525 IST 1637 270] ACCESS-METHOD-DOT1X-DEB: [0021.5c8c.c761, Cal]
0xA100000F:request response action
[09/01/13 11:59:19.529 IST 1638 270] ACCESS-METHOD-DOT1X-DEB: [0021.5c8c.c761, Cal]
Posting EAP_REQ for 0xA100000F
[09/01/13 11:59:19.529 IST 1639 270] ACCESS-METHOD-DOT1X-DEB: [0021.5c8c.c761, Cal]
0xA100000F:exiting response state
[09/01/13 11:59:19.529 IST 163a 270] ACCESS-METHOD-DOT1X-DEB: [0021.5c8c.c761, Cal]
0xA100000F:entering request state
[09/01/13 11:59:19.529 IST 163b 270] ACCESS-METHOD-DOT1X-NOTF: [0021.5c8c.c761, Cal]
Sending EAPOL packet
[09/01/13 11:59:19.529 IST 163c 270] ACCESS-METHOD-DOT1X-INFO: [0021.5c8c.c761, Cal]
Platform changed src mac of EAPOL packet
[09/01/13 11:59:19.529 IST 163d 270] ACCESS-METHOD-DOT1X-INFO: [0021.5c8c.c761, Cal]
EAPOL packet sent to client 0xA100000F
[09/01/13 11:59:19.529 IST 163e 270] ACCESS-METHOD-DOT1X-DEB: [0021.5c8c.c761, Cal]
0xA100000F:response request action
--More-- [09/01/13 11:59:21.191 IST 163f 176] ACCESS-METHOD-DOT1X-INFO:
[0021.5c8c.c761, Cal] Queuing an EAPOL pkt on Authenticator Q
[09/01/13 11:59:21.191 IST 1640 270] ACCESS-METHOD-DOT1X-DEB: [0021.5c8c.c761, Cal]
Posting EAPOL_EAP for 0xA100000F
[09/01/13 11:59:21.191 IST 1641 270] ACCESS-METHOD-DOT1X-DEB: [0021.5c8c.c761, Cal]
0xA100000F:entering response state
[09/01/13 11:59:21.191 IST 1642 270] ACCESS-METHOD-DOT1X-NOTF: [0021.5c8c.c761, Cal]
Response sent to the server from 0xA100000F
[09/01/13 11:59:21.191 IST 1643 270] ACCESS-METHOD-DOT1X-DEB: [0021.5c8c.c761, Cal]
0xA100000F:request response action
[09/01/13 11:59:21.194 IST 1644 270] ACCESS-METHOD-DOT1X-DEB: [0021.5c8c.c761, Cal]
Posting EAP_REQ for 0xA100000F
[09/01/13 11:59:21.194 IST 1645 270] ACCESS-METHOD-DOT1X-DEB: [0021.5c8c.c761, Cal]
0xA100000F:exiting response state
[09/01/13 11:59:21.194 IST 1646 270] ACCESS-METHOD-DOT1X-DEB: [0021.5c8c.c761, Cal]
0xA100000F:entering request state
[09/01/13 11:59:21.194 IST 1647 270] ACCESS-METHOD-DOT1X-NOTF: [0021.5c8c.c761, Cal]
Sending EAPOL packet
[09/01/13 11:59:21.194 IST 1648 270] ACCESS-METHOD-DOT1X-INFO: [0021.5c8c.c761, Cal]
Platform changed src mac of EAPOL packet
[09/01/13 11:59:21.194 IST 1649 270] ACCESS-METHOD-DOT1X-INFO: [0021.5c8c.c761, Cal]
EAPOL packet sent to client 0xA100000F
[09/01/13 11:59:21.194 IST 164a 270] ACCESS-METHOD-DOT1X-DEB: [0021.5c8c.c761, Cal]
0xA100000F:response request action
--More-- [09/01/13 11:59:21.201 IST 164b 176] ACCESS-METHOD-DOT1X-INFO:
[0021.5c8c.c761, Cal] Queuing an EAPOL pkt on Authenticator Q
[09/01/13 11:59:21.201 IST 164c 270] ACCESS-METHOD-DOT1X-DEB: [0021.5c8c.c761, Cal]
Posting EAPOL_EAP for 0xA100000F
[09/01/13 11:59:21.201 IST 164d 270] ACCESS-METHOD-DOT1X-DEB: [0021.5c8c.c761, Cal]
0xA100000F:entering response state
[09/01/13 11:59:21.201 IST 164e 270] ACCESS-METHOD-DOT1X-NOTF: [0021.5c8c.c761, Cal]
Response sent to the server from 0xA100000F
[09/01/13 11:59:21.201 IST 164f 270] ACCESS-METHOD-DOT1X-DEB: [0021.5c8c.c761, Cal]
0xA100000F:request response action
[09/01/13 11:59:21.203 IST 1650 270] ACCESS-METHOD-DOT1X-DEB: [0021.5c8c.c761, Cal]
Posting EAP_REQ for 0xA100000F
[09/01/13 11:59:21.203 IST 1651 270] ACCESS-METHOD-DOT1X-DEB: [0021.5c8c.c761, Cal]
0xA100000F:exiting response state
[09/01/13 11:59:21.203 IST 1652 270] ACCESS-METHOD-DOT1X-DEB: [0021.5c8c.c761, Cal]

0xA100000F:entering request state
[09/01/13 11:59:21.203 IST 1653 270] ACCESS-METHOD-DOT1X-NOTF: [0021.5c8c.c761, Cal]
Sending EAPOL packet
[09/01/13 11:59:21.203 IST 1654 270] ACCESS-METHOD-DOT1X-INFO: [0021.5c8c.c761, Cal]
Platform changed src mac of EAPOL packet
[09/01/13 11:59:21.203 IST 1655 270] ACCESS-METHOD-DOT1X-INFO: [0021.5c8c.c761, Cal]
EAPOL packet sent to client 0xA100000F
[09/01/13 11:59:21.203 IST 1656 270] ACCESS-METHOD-DOT1X-DEB: [0021.5c8c.c761, Cal]
0xA100000F:response request action
--More-- [09/01/13 11:59:21.213 IST 1657 176] ACCESS-METHOD-DOT1X-INFO:
[0021.5c8c.c761, Cal] Queuing an EAPOL pkt on Authenticator Q
[09/01/13 11:59:21.213 IST 1658 270] ACCESS-METHOD-DOT1X-DEB: [0021.5c8c.c761, Cal]
Posting EAPOL_EAP for 0xA100000F
[09/01/13 11:59:21.213 IST 1659 270] ACCESS-METHOD-DOT1X-DEB: [0021.5c8c.c761, Cal]
0xA100000F:entering response state
[09/01/13 11:59:21.213 IST 165a 270] ACCESS-METHOD-DOT1X-NOTF: [0021.5c8c.c761, Cal]
Response sent to the server from 0xA100000F
[09/01/13 11:59:21.213 IST 165b 270] ACCESS-METHOD-DOT1X-DEB: [0021.5c8c.c761, Cal]
0xA100000F:request response action
[09/01/13 11:59:21.220 IST 165c 270] ACCESS-METHOD-DOT1X-DEB: [0021.5c8c.c761, Cal]
Posting EAP_REQ for 0xA100000F
[09/01/13 11:59:21.220 IST 165d 270] ACCESS-METHOD-DOT1X-DEB: [0021.5c8c.c761, Cal]
0xA100000F:exiting response state
[09/01/13 11:59:21.220 IST 165e 270] ACCESS-METHOD-DOT1X-DEB: [0021.5c8c.c761, Cal]
0xA100000F:entering request state
[09/01/13 11:59:21.220 IST 165f 270] ACCESS-METHOD-DOT1X-NOTF: [0021.5c8c.c761, Cal]
Sending EAPOL packet
[09/01/13 11:59:21.220 IST 1660 270] ACCESS-METHOD-DOT1X-INFO: [0021.5c8c.c761, Cal]
Platform changed src mac of EAPOL packet
[09/01/13 11:59:21.220 IST 1661 270] ACCESS-METHOD-DOT1X-INFO: [0021.5c8c.c761, Cal]
EAPOL packet sent to client 0xA100000F
[09/01/13 11:59:21.220 IST 1662 270] ACCESS-METHOD-DOT1X-DEB: [0021.5c8c.c761, Cal]
0xA100000F:response request action
--More-- [09/01/13 11:59:21.224 IST 1663 176] ACCESS-METHOD-DOT1X-INFO:
[0021.5c8c.c761, Cal] Queuing an EAPOL pkt on Authenticator Q
[09/01/13 11:59:21.224 IST 1664 270] ACCESS-METHOD-DOT1X-DEB: [0021.5c8c.c761, Cal]
Posting EAPOL_EAP for 0xA100000F
[09/01/13 11:59:21.224 IST 1665 270] ACCESS-METHOD-DOT1X-DEB: [0021.5c8c.c761, Cal]
0xA100000F:entering response state
[09/01/13 11:59:21.224 IST 1666 270] ACCESS-METHOD-DOT1X-NOTF: [0021.5c8c.c761, Cal]
Response sent to the server from 0xA100000F
[09/01/13 11:59:21.224 IST 1667 270] ACCESS-METHOD-DOT1X-DEB: [0021.5c8c.c761, Cal]
0xA100000F:request response action
[09/01/13 11:59:21.227 IST 1668 270] ACCESS-METHOD-DOT1X-DEB: [0021.5c8c.c761, Cal]
Posting EAP_REQ for 0xA100000F
[09/01/13 11:59:21.227 IST 1669 270] ACCESS-METHOD-DOT1X-DEB: [0021.5c8c.c761, Cal]
0xA100000F:exiting response state
[09/01/13 11:59:21.227 IST 166a 270] ACCESS-METHOD-DOT1X-DEB: [0021.5c8c.c761, Cal]
0xA100000F:entering request state
[09/01/13 11:59:21.227 IST 166b 270] ACCESS-METHOD-DOT1X-NOTF: [0021.5c8c.c761, Cal]
Sending EAPOL packet
[09/01/13 11:59:21.227 IST 166c 270] ACCESS-METHOD-DOT1X-INFO: [0021.5c8c.c761, Cal]
Platform changed src mac of EAPOL packet
[09/01/13 11:59:21.227 IST 166d 270] ACCESS-METHOD-DOT1X-INFO: [0021.5c8c.c761, Cal]
EAPOL packet sent to client 0xA100000F
[09/01/13 11:59:21.227 IST 166e 270] ACCESS-METHOD-DOT1X-DEB: [0021.5c8c.c761, Cal]
0xA100000F:response request action
--More-- [09/01/13 11:59:21.235 IST 166f 176] ACCESS-METHOD-DOT1X-INFO:
[0021.5c8c.c761, Cal] Queuing an EAPOL pkt on Authenticator Q
[09/01/13 11:59:21.235 IST 1670 270] ACCESS-METHOD-DOT1X-DEB: [0021.5c8c.c761, Cal]
Posting EAPOL_EAP for 0xA100000F
[09/01/13 11:59:21.235 IST 1671 270] ACCESS-METHOD-DOT1X-DEB: [0021.5c8c.c761, Cal]
0xA100000F:entering response state
[09/01/13 11:59:21.235 IST 1672 270] ACCESS-METHOD-DOT1X-NOTF: [0021.5c8c.c761, Cal]

Response sent to the server from 0xA100000F
[09/01/13 11:59:21.235 IST 1673 270] ACCESS-METHOD-DOT1X-DEB: [0021.5c8c.c761, Cal] 0xA100000F:request response action
[09/01/13 11:59:21.238 IST 1674 179] ACCESS-METHOD-DOT1X-INFO: [0021.5c8c.c761, Cal] Received an EAP Success
[09/01/13 11:59:21.238 IST 1675 270] ACCESS-METHOD-DOT1X-DEB: [0021.5c8c.c761, Cal] Posting EAP_SUCCESS for 0xA100000F
[09/01/13 11:59:21.238 IST 1676 270] ACCESS-METHOD-DOT1X-DEB: [0021.5c8c.c761, Cal] 0xA100000F:exiting response state
[09/01/13 11:59:21.238 IST 1677 270] ACCESS-METHOD-DOT1X-DEB: [0021.5c8c.c761, Cal] 0xA100000F:entering success state
[09/01/13 11:59:21.238 IST 1678 270] ACCESS-METHOD-DOT1X-DEB: [0021.5c8c.c761, Cal] 0xA100000F:response success action
[09/01/13 11:59:21.238 IST 1679 270] ACCESS-METHOD-DOT1X-DEB: [0021.5c8c.c761, Cal] 00xA100000F:entering idle state
[09/01/13 11:59:21.238 IST 167a 262] ACCESS-METHOD-DOT1X-DEB: [0021.5c8c.c761, Cal] Posting AUTH_SUCCESS on Client 0xA100000F
--More-- [09/01/13 11:59:21.238 IST 167b 262] ACCESS-METHOD-DOT1X-DEB: [0021.5c8c.c761, Cal] 0xA100000F:exiting authenticating state
[09/01/13 11:59:21.238 IST 167c 262] ACCESS-METHOD-DOT1X-DEB: [0021.5c8c.c761, Cal] 0xA100000F:entering authc result state
[09/01/13 11:59:21.238 IST 167d 262] ACCESS-METHOD-DOT1X-NOTF: [0021.5c8c.c761, Cal] Sending EAPOL success immediately
[09/01/13 11:59:21.238 IST 167e 262] ACCESS-METHOD-DOT1X-NOTF: [0021.5c8c.c761, Cal] Sending EAPOL packet
[09/01/13 11:59:21.238 IST 167f 262] ACCESS-METHOD-DOT1X-INFO: [0021.5c8c.c761, Cal] Platform changed src mac of EAPOL packet
[09/01/13 11:59:21.239 IST 1680 262] ACCESS-METHOD-DOT1X-INFO: [0021.5c8c.c761, Cal] EAPOL packet sent to client 0xA100000F
[09/01/13 11:59:21.239 IST 1681 262] ACCESS-CORE-SM-NOTF: [0021.5c8c.c761, Cal] Authc success from Dot1X (1), status OK (0) / event success (0)
[09/01/13 11:59:21.239 IST 1682 262] ACCESS-CORE-SM-NOTF: [0021.5c8c.c761, Cal] Highest prio method: INVALID, Authz method: INVALID, Conn hdl: dot1x
[09/01/13 11:59:21.239 IST 1683 262] ACCESS-CORE-SM-NOTF: [0021.5c8c.c761, Cal] Queued AUTHC SUCCESS from Dot1X for session 0x32000026 (0021.5c8c.c761)
[09/01/13 11:59:21.239 IST 1684 173] ACCESS-CORE-SM-NOTF: [0021.5c8c.c761, Cal] Received internal event APPLY_USER_PROFILE (handle 0x32000026)
[09/01/13 11:59:21.239 IST 1685 173] ACCESS-CORE-SM-NOTF: [0021.5c8c.c761, Cal] Clearing AAA data for: 0021.5c8c.c761
[09/01/13 11:59:21.239 IST 1686 173] ACCESS-CORE-SM-SYNC-NOTF: [0021.5c8c.c761, Cal] Delay add/update sync of username for 0021.5c8c.c761 / 0x32000026
--More-- [09/01/13 11:59:21.239 IST 1687 173] ACCESS-CORE-SM-NOTF: [0021.5c8c.c761, Cal] Received User-Name user for client 0021.5c8c.c761
[09/01/13 11:59:21.239 IST 1688 173] ACCESS-CORE-SM-SYNC-NOTF: [0021.5c8c.c761, Cal] Delay add/update sync of auth-domain for 0021.5c8c.c761 / 0x32000026
[09/01/13 11:59:21.239 IST 1689 173] ACCESS-CORE-SM-SYNC-NOTF: [0021.5c8c.c761, Cal] Delay add/update sync of target-scope for 0021.5c8c.c761 / 0x32000026
[09/01/13 11:59:21.239 IST 168a 173] ACCESS-CORE-SM-NOTF: [0021.5c8c.c761, Cal] Existing AAA ID: 0x0000001E
[09/01/13 11:59:21.239 IST 168b 173] ACCESS-CORE-SM-NOTF: [0021.5c8c.c761, Cal] Client 0021.5c8c.c761, Method dot1x changing state from 'Running' to 'Authc Success'
[09/01/13 11:59:21.239 IST 168c 173] ACCESS-CORE-SM-NOTF: [0021.5c8c.c761, Cal] Client 0021.5c8c.c761, Context changing state from 'Running' to 'Authc Success'
[09/01/13 11:59:21.239 IST 168d 173] ACCESS-CORE-SM-CLIENT-DOT11-NOTF: [0021.5c8c.c761, Cal] Applying authz attrs - 0x1D0003FF
[09/01/13 11:59:21.239 IST 168e 173] ACCESS-CORE-SM-NOTF: [0021.5c8c.c761, Cal] Non-SM policy applied for 0x32000026. Authz_attrs not freed
[09/01/13 11:59:21.239 IST 168f 173] ACCESS-CORE-SM-SYNC-NOTF: [0021.5c8c.c761, Cal] Delay add/update sync of method for 0021.5c8c.c761 / 0x32000026
[09/01/13 11:59:21.239 IST 1690 173] ACCESS-CORE-SM-CLIENT-DOT11-NOTF: [0021.5c8c.c761, Cal] Dot11: authz success signalled for 0021.5c8c.c761
[09/01/13 11:59:21.239 IST 1691 173] ACCESS-CORE-SM-CLIENT-SPI-NOTF: [0021.5c8c.c761, Cal] Session authz status notification sent to Client[1] for 0021.5c8c.c761 with handle CE38188, list 1D0003FF

--More-- [09/01/13 11:59:21.239 IST 1692 173] ACCESS-CORE-SM-NOTF:
[0021.5c8c.c761, Ca1] SM will not apply policy for RX_METHOD_AUTHC_SUCCESS on
0x32000026 / 0021.5c8c.c761
[09/01/13 11:59:21.239 IST 1693 173] ACCESS-CORE-SM-NOTF: [0021.5c8c.c761, Ca1]
Processing default action(s) for event RX_METHOD_AUTHC_SUCCESS for session
0x32000026.
[09/01/13 11:59:21.239 IST 1694 173] ACCESS-CORE-SM-NOTF: [0021.5c8c.c761, Ca1]
Executing default action handler for AUTHC SUCCESS (0x32000026)
[09/01/13 11:59:21.239 IST 1695 173] ACCESS-CORE-SM-NOTF: [0021.5c8c.c761, Ca1]
AUTHC_SUCCESS - authorize by default
[09/01/13 11:59:21.239 IST 1696 173] ACCESS-CORE-SM-NOTF: [0021.5c8c.c761, Ca1]
Signalling Authz success for client 0021.5c8c.c761
[09/01/13 11:59:21.239 IST 1697 173] ACCESS-CORE-SM-NOTF: [0021.5c8c.c761, Ca1]
Client 0021.5c8c.c761, Context changing state from 'Authc Success' to 'Authz
Success'
[09/01/13 11:59:21.239 IST 1698 173] ACCESS-CORE-SM-NOTF: [0021.5c8c.c761, Ca1]
Processing SM CB request for 0x32000026: Event: Authorize request (216)
[09/01/13 11:59:21.239 IST 1699 173] ACCESS-CORE-SM-NOTF: [0021.5c8c.c761, Ca1]
Authz complete (SUCCESS) for client 0021.5c8c.c761/0x32000026 reported
[09/01/13 11:59:21.239 IST 169a 173] ACCESS-CORE-SM-NOTF: [0021.5c8c.c761, Ca1]
Received internal event AUTHZ_SUCCESS (handle 0x32000026)
[09/01/13 11:59:21.239 IST 169b 173] ACCESS-CORE-SM-NOTF: [0021.5c8c.c761, Ca1]
Processing AUTHZ_CB RESULT (success) for 0x32000026
[09/01/13 11:59:21.239 IST 169c 173] ACCESS-CORE-SM-NOTF: [0021.5c8c.c761, Ca1]
Processing SM CB request for 0x32000026: Event: Authz result processed (215)
--More-- [09/01/13 11:59:21.239 IST 169d 173] ACCESS-CORE-SM-NOTF:
[0021.5c8c.c761, Ca1] Authz result processed, result: 0
[09/01/13 11:59:21.239 IST 169e 173] ACCESS-METHOD-DOT1X-NOTF: [0021.5c8c.c761, Ca1]
Received Authz Success for the client 0xA100000F (0021.5c8c.c761)
[09/01/13 11:59:21.239 IST 169f 173] ACCESS-CORE-SM-NOTF: [0021.5c8c.c761, Ca1] SM
Reauth Plugin: Client authz change, result=Success
[09/01/13 11:59:21.239 IST 16a0 173] ACCESS-CORE-SM-NOTF: [0021.5c8c.c761, Ca1]
Signalling Authz complete (success) for client 0x32000026
[09/01/13 11:59:21.239 IST 16a1 262] ACCESS-METHOD-DOT1X-DEB: [0021.5c8c.c761, Ca1]
Posting AUTHZ_SUCCESS on Client 0xA100000F
[09/01/13 11:59:21.239 IST 16a2 262] ACCESS-METHOD-DOT1X-DEB: [0021.5c8c.c761, Ca1]
0xA100000F:entering authenticated state
[09/01/13 11:59:21.239 IST 16a3 262] ACCESS-METHOD-DOT1X-NOTF: [0021.5c8c.c761, Ca1]
EAPOL success packet was sent earlier.
[09/01/13 11:59:21.239 IST 16a4 5933] 0021.5C8C.C761 1XA: received authentication
response, status=0 AAA ID=0 protocol=0
[09/01/13 11:59:21.239 IST 16a5 5933] 0021.5C8C.C761 1XA: Handling status
notification request from dot1x, uid=30/0
[09/01/13 11:59:21.239 IST 16a6 5933] 0021.5C8C.C761
client incoming attribute size are 485
[09/01/13 11:59:21.239 IST 16a7 5933] 0021.5C8C.C761 1XA: received RADIUS attr
type 450
[09/01/13 11:59:21.239 IST 16a8 5933] 0021.5C8C.C761 1XA: received RADIUS attr
type 450
--More-- [09/01/13 11:59:21.239 IST 16a9 5933] 0021.5C8C.C761 1XA:
received RADIUS attr type 383
[09/01/13 11:59:21.239 IST 16aa 5933] 0021.5C8C.C761 1XA: received RADIUS attr
type 383
[09/01/13 11:59:21.239 IST 16ab 5933] 0021.5C8C.C761 1XA: received RADIUS attr
type 87
[09/01/13 11:59:21.239 IST 16ac 5933] 0021.5C8C.C761 1XA: received RADIUS attr
type 87
[09/01/13 11:59:21.239 IST 16ad 5933] 0021.5C8C.C761 1XA: received RADIUS attr
type 274
[09/01/13 11:59:21.239 IST 16ae 5933] 0021.5C8C.C761 1XA: received RADIUS attr
type 274
[09/01/13 11:59:21.239 IST 16af 5933] 0021.5C8C.C761 1XA: received RADIUS attr
type 88
[09/01/13 11:59:21.239 IST 16b0 5933] 0021.5C8C.C761 1XA: received RADIUS attr

```
type 88
[09/01/13 11:59:21.239 IST 16b1 5933] 0021.5C8C.C761 1XA: received RADIUS attr
type 661
[09/01/13 11:59:21.239 IST 16b2 5933] 0021.5C8C.C761 1XA: received RADIUS attr
type 661
[09/01/13 11:59:21.239 IST 16b3 5933] 0021.5C8C.C761 1XA: received RADIUS attr
type 662
[09/01/13 11:59:21.239 IST 16b4 5933] 0021.5C8C.C761 1XA: received RADIUS attr
type 662
--More--          [09/01/13 11:59:21.239 IST 16b5 5933] 0021.5C8C.C761 1XA:
received RADIUS attr type 82
[09/01/13 11:59:21.239 IST 16b6 5933] 0021.5C8C.C761 1XA: received RADIUS attr
type 82
[09/01/13 11:59:21.239 IST 16b7 5933] 0021.5C8C.C761 1XA: received RADIUS attr
type 37
[09/01/13 11:59:21.239 IST 16b8 5933] 0021.5C8C.C761 1XA: received RADIUS attr
type 37
[09/01/13 11:59:21.239 IST 16b9 5933] 0021.5C8C.C761 1XA: received RADIUS attr
type 819
[09/01/13 11:59:21.239 IST 16ba 5933] 0021.5C8C.C761 1XA: received RADIUS attr
type 819
[09/01/13 11:59:21.239 IST 16bb 5933] 0021.5C8C.C761 Applying new AAA override for
station 0021.5C8C.C761
[09/01/13 11:59:21.239 IST 16bc 5933] 0021.5C8C.C761 Override values (cont..)
dataAvgC: -1, rTAVgC: -1, dataBurstC: -1, rTimeBurstC: -1   vlanIfName: '',
aclName: ''
[09/01/13 11:59:21.239 IST 16bd 5933] 0021.5C8C.C761 Not applying override policy -
allow override is FALSE
[09/01/13 11:59:21.239 IST 16be 5933] 0021.5C8C.C761 1XA: Setting reauth timeout to
1800 seconds from WLAN config
[09/01/13 11:59:21.239 IST 16bf 5933] 0021.5C8C.C761 1XA: Setting reauth timeout to
1800 seconds
--More--          [09/01/13 11:59:21.239 IST 16c0 5933] 0021.5C8C.C761 1XK: Creating
a PKC PMKID Cache entry (RSN 1)
[09/01/13 11:59:21.239 IST 16c1 5933] 0021.5C8C.C761 1XK: Set Link Secure: 0
[09/01/13 11:59:21.239 IST 16c2 5933] 0021.5C8C.C761 1XK: Set Link Secure: 0
[09/01/13 11:59:21.239 IST 16c3 5933] 0021.5C8C.C761 1XK: Looking for BSSID
C8F9.F983.426C in PMKID cache
[09/01/13 11:59:21.239 IST 16c4 5933] 0021.5C8C.C761 1XK: Adding BSSID
C8F9.F983.426C to PMKID cache
[09/01/13 11:59:21.239 IST 16c5 5933] 0021.5C8C.C761 1XA: Disabling reauth - using
PMK lifetime instead
[09/01/13 11:59:21.239 IST 16c6 5933] 0021.5C8C.C761 Radius overrides disabled,
ignoring source 4
[09/01/13 11:59:21.239 IST 16c7 5933] 0021.5C8C.C761 Radius overrides disabled,
ignoring source 4
[09/01/13 11:59:21.239 IST 16c8 5933] 0021.5C8C.C761 Radius overrides disabled,
ignoring source 4
[09/01/13 11:59:21.239 IST 16c9 5933] 0021.5C8C.C761 PMK sent to mobility group
[09/01/13 11:59:21.239 IST 16ca 5933] 0021.5C8C.C761 1XA: authentication succeeded
[09/01/13 11:59:21.239 IST 16cb 5933] 0021.5C8C.C761 1XK: Looking for BSSID
C8F9.F983.426C in PMKID cache
[09/01/13 11:59:21.239 IST 16cc 5933] 0021.5C8C.C761 1XK: Looking for BSSID
C8F9.F983.426C in PMKID cache
--More--          [09/01/13 11:59:21.239 IST 16cd 5933] 0021.5C8C.C761 Starting key
exchange with mobile - data forwarding is disabled
[09/01/13 11:59:21.239 IST 16ce 5933] 0021.5C8C.C761 1XA: Sending EAPOL message to
mobile, WLAN=4 AP WLAN=4
[09/01/13 11:59:21.246 IST 16cf 5933] 0021.5C8C.C761 1XA: Received 802.11 EAPOL
message (len 123) from mobile
[09/01/13 11:59:21.246 IST 16d0 5933] 0021.5C8C.C761 1XA: Received EAPOL-Key from
mobile
[09/01/13 11:59:21.246 IST 16d1 5933] 0021.5C8C.C761 1XK: Received EAPOL-key in
PTK_START state (msg 2) from mobile
```

```
[09/01/13 11:59:21.246 IST 16d2 5933] 0021.5C8C.C761 1XK: Stopping retransmission timer
[09/01/13 11:59:21.246 IST 16d3 5933] 0021.5C8C.C761 1XA: Sending EAPOL message to mobile, WLAN=4 AP WLAN=4
[09/01/13 11:59:21.258 IST 16d4 5933] 0021.5C8C.C761 1XA: Received 802.11 EAPOL message (len 99) from mobile
[09/01/13 11:59:21.258 IST 16d5 5933] 0021.5C8C.C761 1XA: Received EAPOL-Key from mobile
[09/01/13 11:59:21.258 IST 16d6 5933] 0021.5C8C.C761 1XK: Received EAPOL-key in PTKINITNEGOTIATING state (msg 4) from mobile
[09/01/13 11:59:21.258 IST 16d7 5933] 0021.5C8C.C761 1XK: Set Link Secure: 1
[09/01/13 11:59:21.258 IST 16d8 5933] 0021.5C8C.C761 1XK: Key exchange complete - updating PEM
--More--          [09/01/13 11:59:21.258 IST 16d9 5933] 0021.5C8C.C761
apfMslxStateInc
[09/01/13 11:59:21.258 IST 16da 5933] 0021.5C8C.C761 WCDB_AUTH: Adding opt82 len 0
[09/01/13 11:59:21.258 IST 16db 5933] 0021.5C8C.C761 WCDB_LLM: NoRun Prev Mob 0, Curr Mob 0 llmReq 1, return False
[09/01/13 11:59:21.258 IST 16dc 5933] 0021.5C8C.C761 WCDB_CHANGE: auth=L2_AUTH(1) vlan 20 radio 1 client_id 0x84fd0000000050 mobility=Unassoc(0) src_int 0xb6818000000038 dst_int 0x0 ackflag 0 reassoc_client 0 llm_notif 0 ip 0.0.0.0 ip_learn_type UNKNOWN
[09/01/13 11:59:21.258 IST 16dd 5933] 0021.5C8C.C761 WCDB_CHANGE: In L2 auth but l2ack waiting lfag not set,so set
[09/01/13 11:59:21.258 IST 16de 5933] 0021.5C8C.C761 Not Using WMM Compliance code qosCap 00
[09/01/13 11:59:21.258 IST 16df 5933] 0021.5C8C.C761 WCDB_AUTH: Adding opt82 len 0
[09/01/13 11:59:21.258 IST 16e0 5933] 0021.5C8C.C761 WCDB_CHANGE: Suppressing SPI (Mobility state not known) pemstate 7 state LEARN_IP(2) vlan 20 client_id 0x84fd0000000050 mob=Unassoc(0) ackflag 1 dropd 0
[09/01/13 11:59:21.258 IST 16e1 5933] 0021.5C8C.C761 Incrementing the Reassociation Count 1 for client (of interface VLAN0020)
[09/01/13 11:59:21.258 IST 16e2 5933] 0021.5C8C.C761 1XK: Stopping retransmission timer
[09/01/13 11:59:21.258 IST 16e3 5933] 0021.5C8C.C761 0.0.0.0, auth_state 7 mmRole Unassoc !!!
--More--          [09/01/13 11:59:21.258 IST 16e4 5933] 0021.5C8C.C761 0.0.0.0, auth_state 7 mmRole Unassoc, updating wcdb not needed
[09/01/13 11:59:21.258 IST 16e5 5933] 0021.5C8C.C761 Tclas Plumb needed: 0
[09/01/13 11:59:21.258 IST 16e6 5933] 0021.5C8C.C761 WCDB_AUTH: Adding opt82 len 0
[09/01/13 11:59:21.258 IST 16e7 5933] 0021.5C8C.C761 WCDB_LLM: NoRun Prev Mob 0, Curr Mob 1 llmReq 1, return False
[09/01/13 11:59:21.258 IST 16e8 5933] 0021.5C8C.C761 WCDB_CHANGE: Suppressing SPI (ACK message not recvd) pemstate 7 state LEARN_IP(2) vlan 20 client_id 0x84fd0000000050 mob=Local(1) ackflag 1 dropd 1
[09/01/13 11:59:21.258 IST 16e9 5933] 0021.5C8C.C761 Error updating wcdb on mobility complete
[09/01/13 11:59:21.258 IST 16ea 5933] 0021.5C8C.C761 aaa attribute list length is 79
[09/01/13 11:59:21.258 IST 16eb 5933] 0021.5C8C.C761 Sending SPI spi_epm_epm_session_create successfull
[09/01/13 11:59:21.259 IST 16ec 5933] 0021.5C8C.C761 0.0.0.0, auth_state 7 mmRole Local !!!
[09/01/13 11:59:21.259 IST 16ed 5933] 0021.5C8C.C761 0.0.0.0, auth_state 7 mmRole Local, updating wcdb not needed
[09/01/13 11:59:21.259 IST 16ee 5933] 0021.5C8C.C761 Tclas Plumb needed: 0
[09/01/13 11:59:21.260 IST 16ef 190] [WCDB] ==Update event: client (0021.5c8c.c761) client id:(0x84fd0000000050) vlan (20->20) global_wlan (4->4) auth_state (ASSOCIATION->L2_AUTH_DONE) mob_state (INIT->INIT)
--More--          [09/01/13 11:59:21.260 IST 16f0 190] [WCDB] ===intf src/dst (0xb6818000000038->0xb6818000000038)/(0x0->0x0) radio/bssid (1->1)/(c8f9.f983.4260->c8f9.f983.4260) llm_notify (false) addr v4/v6 (0)/(0)
[09/01/13 11:59:21.260 IST 16f1 190] [WCDB] wcdb_client_mcast_update_notify: No mcast action reqd
[09/01/13 11:59:21.260 IST 16f2 190] [WCDB] Allocating Client LE and waiting for
```

ACK

```
[09/01/13 11:59:21.260 IST 16f3 190] [WCDB] wcdb_ffcp_wcdb_client_add_notify:
client (0021.5c8c.c761) id 0x84fd0000000050 ffcp create flags=0x0 iifid
bssid/radio = 0x81fac000000041/0xbfcfc00000003a, src_intf = 0xb6818000000038
[09/01/13 11:59:21.261 IST 16f4 5933] 0021.5C8C.C761 Received
session_create_response for client handle 37432873367634000
[09/01/13 11:59:21.261 IST 16f5 5933] 0021.5C8C.C761 Received
session_create_response with EPM session handle 4060086311
[09/01/13 11:59:21.261 IST 16f6 5933] 0021.5C8C.C761 Send request to EPM
[09/01/13 11:59:21.261 IST 16f7 5933] 0021.5C8C.C761 aaa attribute list length is
485
[09/01/13 11:59:21.261 IST 16f8 5933] 0021.5C8C.C761 Sending Activate request for
session handle 4060086311 successful
[09/01/13 11:59:21.261 IST 16f9 5933] 0021.5C8C.C761 Post-auth policy request sent!
Now wait for post-auth policy ACK from EPM
[09/01/13 11:59:21.261 IST 16fa 5933] 0021.5C8C.C761 Received
activate_features_resp for client handle 37432873367634000
[09/01/13 11:59:21.261 IST 16fb 5933] 0021.5C8C.C761 Received
activate_features_resp for EPM session handle 4060086311
--More--          [09/01/13 11:59:21.262 IST 16fc 5933] 0021.5C8C.C761 Received
policy_enforcement_response for client handle 37432873367634000
[09/01/13 11:59:21.262 IST 16fd 5933] 0021.5C8C.C761 Received
policy_enforcement_response for EPM session handle 2818572305
[09/01/13 11:59:21.262 IST 16fe 5933] 0021.5C8C.C761 Received response
for _EPM_SPI_ACTIVATE_FEATURES request sent for client
[09/01/13 11:59:21.262 IST 16ff 5933] 0021.5C8C.C761
Received _EPM_SPI_STATUS_SUCCESS for request sent for client
[09/01/13 11:59:21.262 IST 1700 5933] 0021.5C8C.C761 Post-auth policy ACK recvd
from EPM, unset flag on MSCB
[09/01/13 11:59:21.262 IST 1701 33] [WCDB] wcdb_ffcp_add_cb: client (0021.5c8c.c761)
client (0x84fd0000000050): FFCP operation (CREATE) return code (0)
[09/01/13 11:59:21.262 IST 1702 33] [WCDB] wcdb_send_add_notify_callback_event:
Notifying other features about client add
[09/01/13 11:59:21.262 IST 1703 33] ACCESS-CORE-SM-FEATURE-WIRED_TUNNEL-NOT:
[0021.5c8c.c761] Client 0021.5c8c.c761 is not tunnel client..Return
[09/01/13 11:59:21.262 IST 1704 33] [WCDB] wcdb_sisf_client_add_notify: Notifying
SISF of DEASSOC to DOWN any old entry for 0021.5c8c.c761
[09/01/13 11:59:21.262 IST 1705 33] [WCDB] wcdb_sisf_client_add_notify: Notifying
SISF of new Association for 0021.5c8c.c761
[09/01/13 11:59:21.262 IST 1706 5933] 0021.5C8C.C761 WCDB SPI response msg handler
client code 0 mob state 0
[09/01/13 11:59:21.262 IST 1707 5933] 0021.5C8C.C761 WcdbClientUpdate: L2 Auth ACK
from WCDB
--More--          [09/01/13 11:59:21.262 IST 1708 5933] 0021.5C8C.C761 WCDB_L2ACK:
wcdbAckRecvdFlag updated
[09/01/13 11:59:21.262 IST 1709 5933] 0021.5C8C.C761 WCDB_AUTH: Adding opt82 len 0
[09/01/13 11:59:21.262 IST 170a 5933] 0021.5C8C.C761 WCDB_LLM: NoRun Prev Mob 0,
Curr Mob 1 llmReq 1, return False
[09/01/13 11:59:21.263 IST 170b 5933] 0021.5C8C.C761 WCDB_CHANGE: auth=LEARN_IP(2)
vlan 20 radio 1 client_id 0x84fd0000000050 mobility=Local(1) src_int
0xb6818000000038 dst_int 0x0 ackflag 2 reassoc_client 0 llm_notif 0 ip 0.0.0.0
ip_learn_type UNKNOWN
[09/01/13 11:59:21.263 IST 170c 190] [WCDB] ==Update event: client (0021.5c8c.c761)
client id:(0x84fd0000000050) vlan (20->20) global_wlan (4->4) auth_state
(L2_AUTH_DONE->LEARN_IP) mob_state (INIT->LOCAL)
[09/01/13 11:59:21.263 IST 170d 190] [WCDB] ===intf src/dst
(0xb6818000000038->0xb6818000000038)/(0x0->0x0)
radio/bssid (1->1)/(c8f9.f983.4260->c8f9.f983.4260) llm_notify (false) addr v4/v6
(0)/(0)
[09/01/13 11:59:21.263 IST 170e 190] [WCDB] wcdb_client_mcast_update_notify: No
mcast action reqd
[09/01/13 11:59:21.263 IST 170f 190] [WCDB] wcdb_ffcp_wcdb_client_update_notify
client (0021.5c8c.c761) id 0x84fd0000000050 ffcp update with flags=0x18
[09/01/13 11:59:21.263 IST 1710 190] [WCDB] wcdb_client_state_change_notify:
```

```
update flags = 0x3
[09/01/13 11:59:21.263 IST 1711 190] ACCESS-CORE-SM-CLIENT-DOT11-NOTF:
[0021.5c8c.c761] WCDB notification (LEARN_IP) for 0021.5c8c.c761
--More--          [09/01/13 11:59:21.263 IST 1712 190] [WCDB]
wcdb_sisf_client_update_notify: Notifying SISF
[09/01/13 11:59:21.263 IST 1713 329] [WCDB] wcdb_ffcp_cb: client (0021.5c8c.c761)
client (0x84fd0000000050): FFCP operation (UPDATE) return code (0)
[09/01/13 11:59:24.417 IST 1714 264] dhcp pkt processing routine is called for pak
with SMAC = 0021.5c8c.c761 and SRC_ADDR = 0.0.0.0
[09/01/13 11:59:24.417 IST 1715 210] sending dhcp packet outafter processing with
SMAC = 0021.5c8c.c761 and SRC_ADDR = 0.0.0.0
[09/01/13 11:59:24.417 IST 1716 144] DHCPD: Sending notification of DISCOVER:
[09/01/13 11:59:24.417 IST 1717 144] DHCPD: Sending notification of DISCOVER:
[09/01/13 11:59:24.417 IST 1718 144] DHCPD: DHCPOFFER notify setup address
20.20.20.3 mask 255.255.255.0
[09/01/13 11:59:24.425 IST 1719 264] dhcp pkt processing routine is called for pak
with SMAC = 0021.5c8c.c761 and SRC_ADDR = 0.0.0.0
[09/01/13 11:59:24.425 IST 171a 210] sending dhcp packet outafter processing with
SMAC = 0021.5c8c.c761 and SRC_ADDR = 0.0.0.0
[09/01/13 11:59:24.425 IST 171b 144] DHCPD: address 20.20.20.3 mask 255.255.255.0
[09/01/13 11:59:24.425 IST 171c 186] ACCESS-CORE-SM-CLIENT-IPDT-NOTF:
[0021.5c8c.c761, Cal] IP update for MAC 0021.5c8c.c761. New IP 20.20.20.3
[09/01/13 11:59:24.425 IST 171d 186] ACCESS-CORE-SM-CLIENT-IPDT-NOTF:
[0021.5c8c.c761, Cal] IPv4 ID update notify success for label 0x32000026, MAC
0021.5c8c.c761
[09/01/13 11:59:24.425 IST 171e 186] [WCDB] wcdb_ffcp_wcdb_client_update_notify
client (0021.5c8c.c761) id 0x84fd0000000050 ffcp update with flags=0x18
--More--          [09/01/13 11:59:24.425 IST 171f 173] ACCESS-CORE-SM-NOTF:
[0021.5c8c.c761, Cal] Received internal event SINGLE_ID_UPDATE (handle 0x32000026)
[09/01/13 11:59:24.425 IST 1720 173] ACCESS-CORE-SM-SYNC-NOTF: [0021.5c8c.c761, Cal]
Delay add/update sync of addr for 0021.5c8c.c761 / 0x32000026
[09/01/13 11:59:24.425 IST 1721 5933] 0021.5C8C.C761 WCDB_IP_BIND: w/ IPv4
20.20.20.3 ip_learn_type DHCP add_delete 1,options_length 0
[09/01/13 11:59:24.425 IST 1722 5933] 0021.5C8C.C761 WcdbClientUpdate: IP Binding
from WCDB ip_learn_type 1, add_or_delete 1
[09/01/13 11:59:24.425 IST 1723 5933] 0021.5C8C.C761 IPv4 Addr: 20:20:20:3
[09/01/13 11:59:24.425 IST 1724 5933] 0021.5C8C.C761 MS got the IP, resetting the
Reassociation Count 0 for client
[09/01/13 11:59:24.425 IST 1725 5933] 0021.5C8C.C761 apfMsRunStateInc
[09/01/13 11:59:24.426 IST 1726 5933] 0021.5C8C.C761 WCDB_AUTH: Adding opt82 len 0
[09/01/13 11:59:24.426 IST 1727 5933] 0021.5C8C.C761 WCDB_LLM: prev Mob state 1
curr Mob State 1 llReq flag 0
[09/01/13 11:59:24.426 IST 1728 5933] 0021.5C8C.C761 WCDB_CHANGE: auth=RUN(4) vlan
20 radio 1 client_id 0x84fd0000000050 mobility=Local(1) src_int 0xb6818000000038
dst_int 0x0 ackflag 2 reassoc_client 0 llm_notif 0 ip 20.20.20.3 ip_learn_type DHCP
[09/01/13 11:59:24.426 IST 1729 329] [WCDB] wcdb_ffcp_cb: client (0021.5c8c.c761)
client (0x84fd0000000050): FFCP operation (UPDATE) return code (0)
[09/01/13 11:59:24.426 IST 172a 5933] 0021.5C8C.C761 AAAS: acct method list NOT
configured for WLAN 4, accounting skipped
--More--          [09/01/13 11:59:24.426 IST 172b 5933] 0021.5C8C.C761
Sending IPv4 update to Controller 10.105.135.176
[09/01/13 11:59:24.426 IST 172c 5933] 0021.5C8C.C761 Assigning Address 20.20.20.3
to mobile
[09/01/13 11:59:24.426 IST 172d 5933] 0021.5C8C.C761 20.20.20.3, auth_state 20
mmRole Local !!!
[09/01/13 11:59:24.426 IST 172e 5933] 0021.5C8C.C761 20.20.20.3, auth_state 20
mmRole Local, updating wcdb not needed
[09/01/13 11:59:24.426 IST 172f 5933] 0021.5C8C.C761 Tclas Plumb needed: 0
[09/01/13 11:59:24.427 IST 1730 190] [WCDB] ==Update event: client (0021.5c8c.c761)
client id:(0x84fd0000000050) vlan (20->20) global_wlan (4->4) auth_state
(LEARN_IP->RUN) mob_state (LOCAL->LOCAL)
[09/01/13 11:59:24.427 IST 1731 190] [WCDB] ==intf src/dst
(0xb6818000000038->0xb6818000000038)/(0x0->0x0) radio/bssid
(1->1)/(c8f9.f983.4260->c8f9.f983.4260) llm_notify (false) addr v4/v6 (0)/(0)
```



```
[09/01/13 11:59:24.427 IST 1732 190] [WCDB] wcdb_client_mcast_update_notify: No
mcast action reqd
[09/01/13 11:59:24.427 IST 1733 190] [WCDB] wcdb_ffcp_wcdb_client_update_notify
client (0021.5c8c.c761) id 0x84fd0000000050 ffcp update with flags=0x18
[09/01/13 11:59:24.427 IST 1734 190] [WCDB] wcdb_client_state_change_notify:
update flags = 0x2
[09/01/13 11:59:24.427 IST 1735 190] ACCESS-CORE-SM-CLIENT-DOT11-NOTF:
[0021.5c8c.c761] Ignore WCDB run notification for 0021.5c8c.c761 as authz complete.
--More--          [09/01/13 11:59:24.427 IST 1736 190] [WCDB]
wcdb_sisf_client_update_notify: Notifying SISF
[09/01/13 11:59:24.427 IST 1737 329] [WCDB] wcdb_ffcp_cb: client (0021.5c8c.c761)
client (0x84fd0000000050): FFCP operation (UPDATE) return code (0)
[09/01/13 11:59:34.667 IST 1738 190] [WCDB] ==Update event: client (60fa.cd4c.597b)
client id:(0xa028c00000004c) vlan (20->20) global_wlan (2->2) auth_state
(RUN->ASSOCIATION) mob_state (LOCAL->LOCAL)
[09/01/13 11:59:34.667 IST 1739 190] [WCDB] ===intf src/dst
(0xb6818000000038->0xb6818000000038)/(0x0->0x0) radio/bssid (0->0)/
(c8f9.f983.4260->c8f9.f983.4260) llm_notify (true) addr v4/v6 (0)/(0)
[09/01/13 11:59:34.667 IST 173a 190] [WCDB] wcdb_client_mcast_update_notify:
No mcast action reqd
[09/01/13 11:59:34.667 IST 173b 190] [WCDB] Ignoring auth state transition
(4 -> 0)
[09/01/13 11:59:34.667 IST 173c 190] [WCDB] wcdb_ffcp_wcdb_client_update_notify
client (60fa.cd4c.597b) id 0xa028c00000004c ffcp update with flags=0x18
[09/01/13 11:59:34.667 IST 173d 190] [WCDB] wcdb_client_state_change_notify:
update flags = 0x2
[09/01/13 11:59:34.667 IST 173e 190] [WCDB] wcdb_sisf_client_update_notify:
Notifying SISF
[09/01/13 11:59:34.667 IST 173f 329] [WCDB] wcdb_ffcp_cb: client (60fa.cd4c.597b)
client (0xa028c00000004c): FFCP operation (UPDATE) return code (0)
[09/01/13 11:59:34.865 IST 1740 190] [WCDB] ==Update event: client (60fa.cd4c.597b)
client id:(0xa028c00000004c) vlan (20->20) global_wlan (2->2) auth_state (RUN->RUN)
mob_state (LOCAL->LOCAL)
--More--          [09/01/13 11:59:34.865 IST 1741 190] [WCDB] ===intf src/dst
(0xb6818000000038->0xb6818000000038)/(0x0->0x0)
radio/bssid (0->0)/(c8f9.f983.4260->c8f9.f983.4260) llm_notify (false) addr v4/v6
(0)/(0)
[09/01/13 11:59:34.865 IST 1742 190] [WCDB] wcdb_client_mcast_update_notify: No
mcast action reqd
[09/01/13 11:59:34.865 IST 1743 190] [WCDB] wcdb_ffcp_wcdb_client_update_notify
client (60fa.cd4c.597b) id 0xa028c00000004c ffcp update with flags=0x18
[09/01/13 11:59:34.865 IST 1744 190] [WCDB] wcdb_client_state_change_notify:
update flags = 0x2
[09/01/13 11:59:34.865 IST 1745 190] [WCDB] wcdb_sisf_client_update_notify:
Notifying SISF
[09/01/13 11:59:34.865 IST 1746 329] [WCDB] wcdb_ffcp_cb: client (60fa.cd4c.597b)
client (0xa028c00000004c): FFCP operation (UPDATE) return code (0)
[09/01/13 11:59:36.010 IST 1747 264] dhcp pkt processing routine is called for pak
with SMAC = 60fa.cd4c.597b and SRC_ADDR = 0.0.0.0
[09/01/13 11:59:36.010 IST 1748 210] sending dhcp packet outafter processing with
SMAC = 60fa.cd4c.597b and SRC_ADDR = 0.0.0.0
[09/01/13 11:59:36.010 IST 1749 144] DHCPD: address 20.20.20.2 mask 255.255.255.0
[09/01/13 11:59:52.802 IST 174a 190] [WCDB] ==Update event: client (60fa.cd4c.597b)
client id:(0xa028c00000004c) vlan (20->20) global_wlan (2->2) auth_state
(RUN->ASSOCIATION) mob_state (LOCAL->LOCAL)
[09/01/13 11:59:52.802 IST 174b 190] [WCDB] ===intf src/dst
(0xb6818000000038->0xb6818000000038)/(0x0->0x0)
radio/bssid (0->0)/(c8f9.f983.4260->c8f9.f983.4260) llm_notify (true) addr v4/v6
(0)/(0)
--More--          [09/01/13 11:59:52.802 IST 174c 190] [WCDB]
wcdb_client_mcast_update_notify: No mcast action reqd
[09/01/13 11:59:52.802 IST 174d 190] [WCDB] Ignoring auth state transition (4 -> 0)
[09/01/13 11:59:52.802 IST 174e 190] [WCDB] wcdb_ffcp_wcdb_client_update_notify
client (60fa.cd4c.597b) id 0xa028c00000004c ffcp update with flags=0x18
```

```
[09/01/13 11:59:52.802 IST 174f 190] [WCDB] wcdb_client_state_change_notify:
update flags = 0x2
[09/01/13 11:59:52.802 IST 1750 190] [WCDB] wcdb_sisf_client_update_notify:
Notifying SISF
[09/01/13 11:59:52.803 IST 1751 329] [WCDB] wcdb_ffcp_cb: client (60fa.cd4c.597b)
client (0xa028c00000004c): FFCP operation (UPDATE) return code (0)
[09/01/13 11:59:53.015 IST 1752 190] [WCDB] ==Update event: client (60fa.cd4c.597b)
client id:(0xa028c00000004c) vlan (20->20) global_wlan (2->2) auth_state (RUN->RUN)
mob_state (LOCAL->LOCAL)
[09/01/13 11:59:53.015 IST 1753 190] [WCDB] ===intf src/dst
(0xb6818000000038->0xb6818000000038)/(0x0->0x0)
radio/bssid (0->0)/(c8f9.f983.4260->c8f9.f983.4260) llm_notify (false) addr v4/v6
(0)/(0)
[09/01/13 11:59:53.015 IST 1754 190] [WCDB] wcdb_client_mcast_update_notify: No
mcast action reqd
[09/01/13 11:59:53.015 IST 1755 190] [WCDB] wcdb_ffcp_wcdb_client_update_notify
client (60fa.cd4c.597b) id 0xa028c00000004c ffcp update with flags=0x18
[09/01/13 11:59:53.015 IST 1756 190] [WCDB] wcdb_client_state_change_notify: update
flags = 0x2
--More--          [09/01/13 11:59:53.015 IST 1757 190] [WCDB]
wcdb_sisf_client_update_notify: Notifying SISF
[09/01/13 11:59:53.016 IST 1758 329] [WCDB] wcdb_ffcp_cb: client (60fa.cd4c.597b)
client (0xa028c00000004c): FFCP operation (UPDATE) return code (0)
[09/01/13 11:59:54.045 IST 1759 264] dhcp pkt processing routine is called for pak
with SMAC = 60fa.cd4c.597b and SRC_ADDR = 0.0.0.0
[09/01/13 11:59:54.045 IST 175a 210] sending dhcp packet outafter processing with
SMAC = 60fa.cd4c.597b and SRC_ADDR = 0.0.0.0
[09/01/13 11:59:54.045 IST 175b 144] DHCPD: address 20.20.20.2 mask 255.255.255.0
[09/01/13 12:00:18.830 IST 175c 190] [WCDB] ==Update event: client (60fa.cd4c.597b)
client id:(0xa028c00000004c) vlan (20->20) global_wlan (2->2) auth_state
(RUN->ASSOCIATION) mob_state (LOCAL->LOCAL)
[09/01/13 12:00:18.830 IST 175d 190] [WCDB] ===intf src/dst
(0xb6818000000038->0xb6818000000038)/(0x0->0x0)
radio/bssid (0->0)/(c8f9.f983.4260->c8f9.f983.4260) llm_notify (true) addr v4/v6
(0)/(0)
[09/01/13 12:00:18.830 IST 175e 190] [WCDB] wcdb_client_mcast_update_notify: No
mcast action reqd
[09/01/13 12:00:18.830 IST 175f 190] [WCDB] Ignoring auth state transition
(4 -> 0)
[09/01/13 12:00:18.830 IST 1760 190] [WCDB] wcdb_ffcp_wcdb_client_update_notify
client (60fa.cd4c.597b) id 0xa028c00000004c ffcp update with flags=0x18
[09/01/13 12:00:18.830 IST 1761 190] [WCDB] wcdb_client_state_change_notify:
update flags = 0x2
--More--          [09/01/13 12:00:18.830 IST 1762 190] [WCDB]
wcdb_sisf_client_update_notify: Notifying SISF
[09/01/13 12:00:18.830 IST 1763 329] [WCDB] wcdb_ffcp_cb: client (60fa.cd4c.597b)
client (0xa028c00000004c): FFCP operation (UPDATE) return code (0)
[09/01/13 12:00:19.038 IST 1764 190] [WCDB] ==Update event: client (60fa.cd4c.597b)
client id:(0xa028c00000004c) vlan (20->20) global_wlan (2->2) auth_state (RUN->RUN)
mob_state (LOCAL->LOCAL)
[09/01/13 12:00:19.038 IST 1765 190] [WCDB] ===intf src/dst
(0xb6818000000038->0xb6818000000038)/(0x0->0x0)
radio/bssid (0->0)/(c8f9.f983.4260->c8f9.f983.4260) llm_notify (false) addr v4/v6
(0)/(0)
[09/01/13 12:00:19.038 IST 1766 190] [WCDB] wcdb_client_mcast_update_notify:
No mcast action reqd
[09/01/13 12:00:19.038 IST 1767 190] [WCDB] wcdb_ffcp_wcdb_client_update_notify
client (60fa.cd4c.597b) id 0xa028c00000004c ffcp update with flags=0x18
[09/01/13 12:00:19.038 IST 1768 190] [WCDB] wcdb_client_state_change_notify:
update flags = 0x2
[09/01/13 12:00:19.038 IST 1769 190] [WCDB] wcdb_sisf_client_update_notify:
Notifying SISF
[09/01/13 12:00:19.038 IST 176a 329] [WCDB] wcdb_ffcp_cb: client (60fa.cd4c.597b)
client (0xa028c00000004c): FFCP operation (UPDATE) return code (0)
```

[09/01/13 12:00:20.108 IST 176b 5933] 0021.5C8C.C761

Client stats update: Time now in sec 1378015280, Last Acct Msg Sent at 1378015224 sec

[09/01/13 12:00:20.590 IST 176c 264] dhcp pkt processing routine is called for pak with SMAC = 60fa.cd4c.597b and SRC_ADDR = 0.0.0.0

--More-- [09/01/13 12:00:20.590 IST 176d 210] sending dhcp packet outafter processing with SMAC = 60fa.cd4c.597b and SRC_ADDR = 0.0.0.0

[09/01/13 12:00:20.590 IST 176e 144] DHCPD: address 20.20.20.2 mask 255.255.255.0

Controller#

*Sep 1 06:04:20.121: 0021.5C8C.C761

Client stats update: 1 wcm: Time now in sec 1378015460, Last Acct Msg Sent at 1378015370 sec

*Sep 1 06:04:20.121: 0021.5C8C.C761 Requested to send acct interim update request msg to APF task for client 0: 1 wcm: 21:5c:8c:c7:61

*Sep 1 06:04:21.326: Load Balancer: 1 wcm: Success, Resource allocated are: Active Switch number: 1, Active Asic number : 2, Reserve Switch number 0 Reserve Asic number 0. AP Asic num 0

*Sep 1 06:04:21.326: WCDB_IIF: 1 wcm: Ack Message ID: 0x85780000000052 code 1001

*Sep 1 06:04:21.326: PEM rcv processing msg Epm spi response(12) 1 wcm: e 1001

*Sep 1 06:04:21.326: PEM rcv processing msg Add SCB(3) 1 wcm: onse(12)

*Sep 1 06:04:21.327: EPM: 1 wcm: Session create resp - client handle 85780000000052 session 32000028

*Sep 1 06:04:21.327: EPM: 1 wcm: Netflow session create resp - client handle 85780000000052 sess 32000028

*Sep 1 06:04:21.328: PEM rcv processing msg Epm spi response(12) 1 wcm: le 85780000000052 sess 32000028

*Sep 1 06:04:21.328: EPM: 1 wcm: Init feature, client handle 85780000000052 session 32000028 authz 5000012

*Sep 1 06:04:21.328: EPM: 1 wcm: Activate feature client handle 85780000000052 sess 32000028 authz 5000012

*Sep 1 06:04:21.328: PEM rcv processing msg Epm spi response(12) 1 wcm: 0052 sess 32000028 authz 5000012

*Sep 1 06:04:21.328: EPM: 1 wcm: Policy enforcement - client handle 85780000000052 session c8000012 authz 5000012

*Sep 1 06:04:21.328: EPM: 1 wcm: Netflow policy enforcement - client handle 85780000000052 sess c8000012 authz 5000012 msg_type 0 policy_status 0 attr len 0

*Sep 1 06:04:21.328: PEM rcv processing msg Epm spi response(12) 1 wcm: e 85780000000052 sess c8000012 authz 5000012 msg_type 0 policy_status 0 attr len 0

*Sep 1 06:04:28.456: PEM rcv processing msg Add SCB(3) 1 wcm: onse(12)