

# Recupere o vManage autônomo por meio da recuperação de desastres

## Contents

[Introduction](#)

[Informações de Apoio](#)

[Configuração de Backup-db](#)

[Recuperar vManage](#)

[Etapa 1. Configuração mínima no vManage](#)

[Etapa 2. Copiar Configuração de Backup e Certificado Raiz](#)

[Etapa 3. Instalar certificado raiz](#)

[Etapa 4. Atualizar informações básicas](#)

[Etapa 5. Instalar certificado vManage](#)

[Etapa 6. Restaurar O Banco De Dados](#)

[Passo 7. Verificar serviços](#)

[Etapa 8. Reautenticar controladores](#)

[Etapa 9. Enviar atualizações para controladores](#)

## Introduction

Este documento descreve as etapas envolvidas para restaurar o vManage pela utilização de um backup de configuração-db.

## Informações de Apoio

Este documento pressupõe que um backup do banco de dados de configuração foi feito periodicamente e, por algum motivo, o vManage autônomo é irrecoverável e precisa de uma redefinição de software ou de uma nova instalação.

Este documento ajuda a recuperar todas as políticas, modelos, configurações e certificados de dispositivo Edge.

## Configuração de Backup-db

```
vManage_rcdn01# request nms configuration-db backup path 05_08_20_configdb
Starting backup of configuration-db
config-db backup logs are available in /var/log/nm/neo4j-backup.log file
Successfully saved database to /opt/data/backup/05_08_20_configdb.tar.gz
```

scp para um servidor externo.

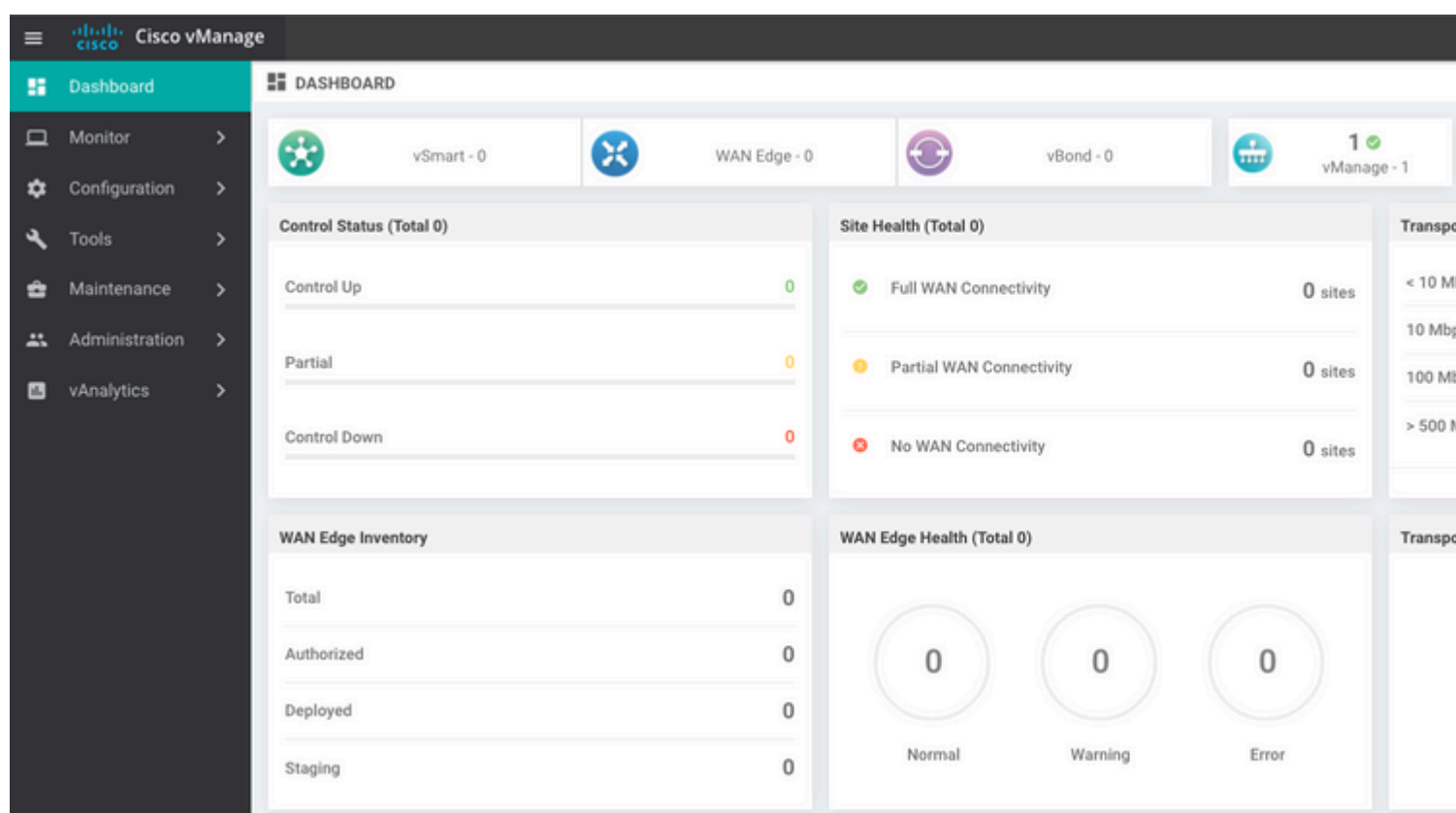
```
vManage_rcdn01# vshell
vManage_rcdn01:~$ scp /opt/data/backup/05_08_20_configdb.tar.gz user@10.2.3.1:/home/ftpuser/ftp/amaugust
amaugust@10.2.3.1's password:
05_08_20_configdb.tar.gz                                100% 484KB 76.6MB/s 00
```

# Recuperar vManage

Simule um desastre redefinindo o vManage pelo comando:

```
vManage_rcdn01# request software reset
```

Agora que você tem um vManage novo que se parece com o mostrado, é aconselhável aderir ao processo de recuperação na sequência correta antes de restaurar o backup.



## Etapa 1. Configuração mínima no vManage

```
system
 host-name          vManage_rcdn01
 system-ip          xx.xx.xx.xx
 site-id            100
 organization-name  ****.cisco
 vbond vbond.list
 !
 !
 vpn 0
 host vbond.list ip 10.2.3.4 10.2.3.5
 interface eth0
```

```
ip address 10.1.3.8/24
tunnel-interface
no shutdown
!
ip route 0.0.0.0/0 10.1.3.1
!
vpn 512
interface eth1
ip address 10.11.3.8/24
no shutdown
!
ip route 0.0.0.0/0 10.1.3.1
!
```

## Etapa 2. Copiar Configuração de Backup e Certificado Raiz

<#root>

```
vManage_rcdn01:~$ scp am****@xx.xx.xx.xx://home/ftuser/ftp/am****/05_08_20_configdb.tar.gz .
am****@xx.xx.xx.xx's password:
05_08_20_configdb.tar.gz                                100% 484KB 76.6MB/s 00:00
```

### Verify

```
vManage_rcdn01:~$ ls -lh
total 492K
-rw-r--r-- 1 admin admin 394 May 8 15:20 archive_id_rsa.pub
-rwxr-xr-x 1 admin admin 485K May 8 15:39 05_08_20_configdb.tar.gz
```

### Copy root certificate from other controller:

```
vManage_rcdn01:~$ scp admin@vbond://home/admin/root.crt .
viptela 18.4.4
admin@vbond's password:
root.crt                                                100% 1380    2.8MB/s 00:00
```

## Etapa 3. Instalar certificado raiz

```
vManage_rcdn01# request root-cert-chain install /home/admin/root.crt
Uploading root-ca-cert-chain via VPN 0
Copying ... /home/admin/root.crt via VPN 0
Updating the root certificate chain..
Successfully installed the root certificate chain
```

## Etapa 4. Atualizar informações básicas

Navegue até **Administration > Settings** e configurar as informações básicas para o IP do vBond, o nome da organização e o certificado.



**Cisco vManage**

- Dashboard
- Monitor
- Configuration**
- Devices
- Certificates**
- Network Design
- Templates
- Policies
- Security
- Cloud onRamp for SaaS
- Cloud onRamp
- Network Hub
- Tools
- Maintenance
- Administration
- vAnalytics

**CONFIGURATION | CERTIFICATES**

WAN Edge List    **Controllers**

Send to vBond

No file chosen

Search Options

Operation Status	Controller Type	Hostname	System IP	Site ID	Certificate Serial	Expiration Date
CSR Generated	vManage	vManage_rcdn01	1.11.11.11	100	No certificate installed	-

**Install Certificate** ✕

Certificate Text Select a file

```

---BEGIN CERTIFICATE---
MIIEQjCCAyqgAwIBAgITwjqFHbasy@wDQYJKoZIhvcNAQELBQAwbDElMAkGA1UE
BhMCVVMxMzA1BgNVBAGTAIRYMQ0wCwYDVQQHEwRSQ0R0MRowFQYDVQQKEw5hbWF1
Z3VzdC5jaXNjbzEXMBUGA1UECxA0Y1h1dWd1c3QyY2IzY28xMzA1MDg1MDE0MDA1
b3RDQTAeFw0yMDA1MDg1MDE0MDA1MDg1MDE0MDA1MDE0MDA1MDE0MDA1MDE0MDA1
EwJVUzETMBEGA1UECzA1MDE0MDA1MDE0MDA1MDE0MDA1MDE0MDA1MDE0MDA1MDE0
BgNVBAStDmFYXVndXN0LmNpc2NvMRQwEgYDVQKKEw12SVB0ZWxhIEUyZDMEEG
A1UEAxM6dm1hbmFnZS05MjMmMmU3Ny1jMDVjLTQ2MmE1YTcxNy01ZjA1MzIzMW01
MmY1MzA1MDE0MDA1MDE0MDA1MDE0MDA1MDE0MDA1MDE0MDA1MDE0MDA1MDE0MDA1
LmNvbTCCASiwDQYJKoZIhvcNAQEBBQADggEPADCCAQoCggEBBAKeHM8FhKmbqXOE
iZnLicP5bGjZTTBihm+kXwWygupv/JTdsy4AEx28gamKl/+d7dNg9PrfAsBc
5rVoP6kyeT2MGX0Fdot1MNVy8asUncJhIRarEn6mnd5Y0H5Nz6jPS/Wx2AnIZB
Z/W46TM7kyqD11tus4R1vj3H7ASkeAHucVZ4NmPoAJSh1Uzx9pIPB1oG2bwmErJP
17zpn8WBVhQ2r0z0Az3Jb246iPd7d8sm8XcBkif51FY+nXepDhrQz3XZUcTogm/

```

Install
Cancel

**Cisco vManage**

- Dashboard
- Monitor
- Configuration**
- Devices
- Certificates
- Network Design
- Templates
- Policies
- Security
- Cloud onRamp for SaaS
- Cloud onRamp
- Network Hub
- Tools
- Maintenance
- Administration

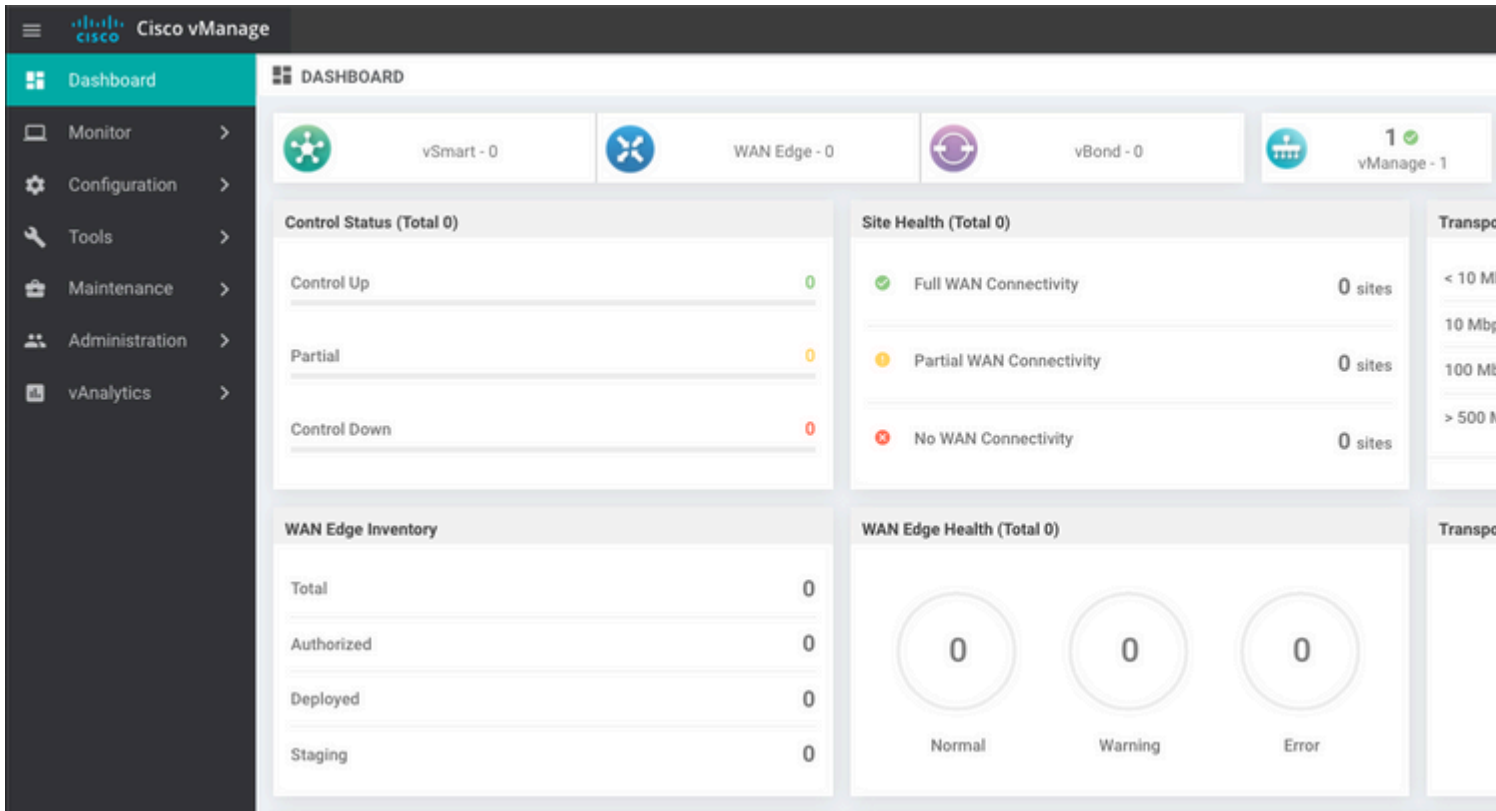
**TASK VIEW**

**Install Certificate**

Total Task: 1 | Success: 1

Search Options

Status	Message	Device Type	Device IP
Success	Successfully synced vEdge list on vManage-9...	vManage	92302e77-c05c-462a-a717-5f013b31d52f
[8-May-2020 16:15:06 UTC]	Install Certificate, on device 92302e77-c05c-462a-a717-5f013b31d52f, started by user "admin" from IP address "169.		
[8-May-2020 16:15:06 UTC]	Pushing serial list to vManage-92302e77-c05c-462a-a717-5f013b31d52f (vManage_rcdn01)		
[8-May-2020 16:15:06 UTC]	Started processing serial list file on vManage-92302e77-c05c-462a-a717-5f013b31d52f (vManage_rcdn01)		
[8-May-2020 16:15:07 UTC]	Completed processing serial list file on vManage-92302e77-c05c-462a-a717-5f013b31d52f (vManage_rcdn01)		
[8-May-2020 16:15:07 UTC]	Done - Push vSmart List for vManage-92302e77-c05c-462a-a717-5f013b31d52f (vManage_rcdn01)		
[8-May-2020 16:15:07 UTC]	Pushed serial list to vManage-92302e77-c05c-462a-a717-5f013b31d52f (vManage_rcdn01)		
[8-May-2020 16:15:07 UTC]	Updated controllers with new certificate serial number of vManage-92302e77-c05c-462a-a717-5f013b31d52f		



## Etapa 6. Restaurar O Banco De Dados

<#root>

```
vManage_rcdn01# request nms configuration-db restore path /home/admin/05_08_20_configdb.tar.gz
```

```
Configuration database is running in a standalone mode
0 [main] INFO com.viptela.vmanage.server.deployment.cluster.ClusterConfigurationFileHandler - Trying to
4 [main] INFO com.viptela.vmanage.server.deployment.cluster.ClusterConfigurationFileHandler - Working o
Successfully saved cluster configuration for localhost
Starting DB backup from: localhost
Creating directory: local
cmd to backup db: sh /usr/bin/vconfd_script_nms_neo4jwrapper.sh backup localhost /opt/data/backup/local
Finished DB backup from: localhost
Stopping NMS application server on localhost
Stopping NMS configuration database on localhost
Resetting NMS configuration database on localhost
Restoring from DB backup: /opt/data/backup/staging/graph.db-backup
cmd to restore db: sh /usr/bin/vconfd_script_nms_neo4jwrapper.sh restore /opt/data/backup/staging/graph
Successfully restored DB backup: /opt/data/backup/staging/graph.db-backup
Starting NMS configuration database on localhost
Waiting for 10s before starting other instances...
Polling neo4j at: localhost
NMS configuration database on localhost has started.
Updating DB with the saved cluster configuration data
Successfully reinserted cluster meta information
Starting NMS application-server on localhost
Waiting for 120s for the instance to start...
Removed old database directory: /opt/data/backup/local/graph.db-backup
Successfully restored database
```

Essa etapa leva mais tempo e depende do backup.

Você pode verificar o processo ao `tail` os logs no vShell.

```
<#root>
```

```
vManage_rcdn01:~$
```

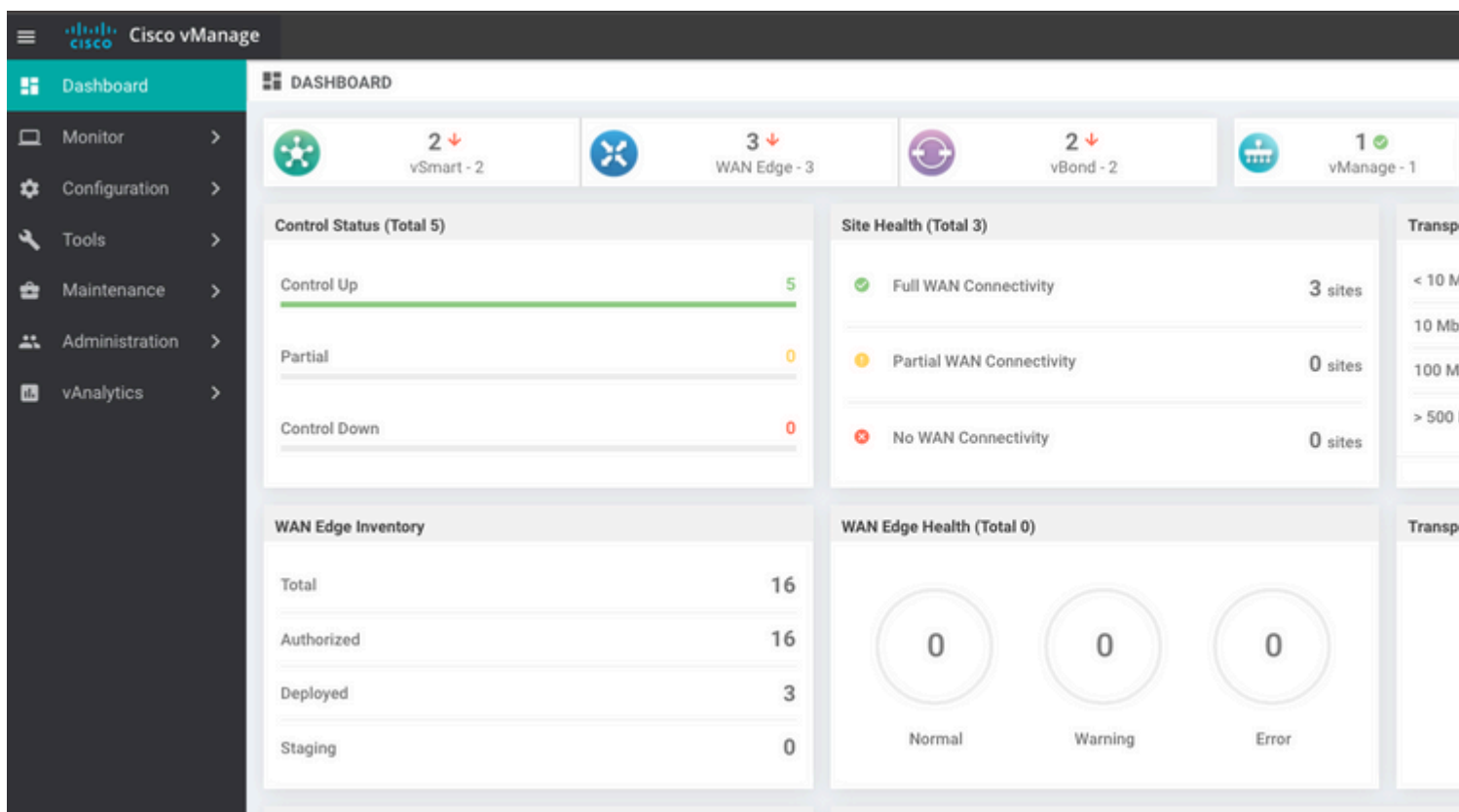
```
tail -fq /var/log/nms/vmanage-server.log /var/log/nms/neo4j-out.log
```

## Passo 7. Verificar serviços

```
vManage_rcdn01# request nms all status
```

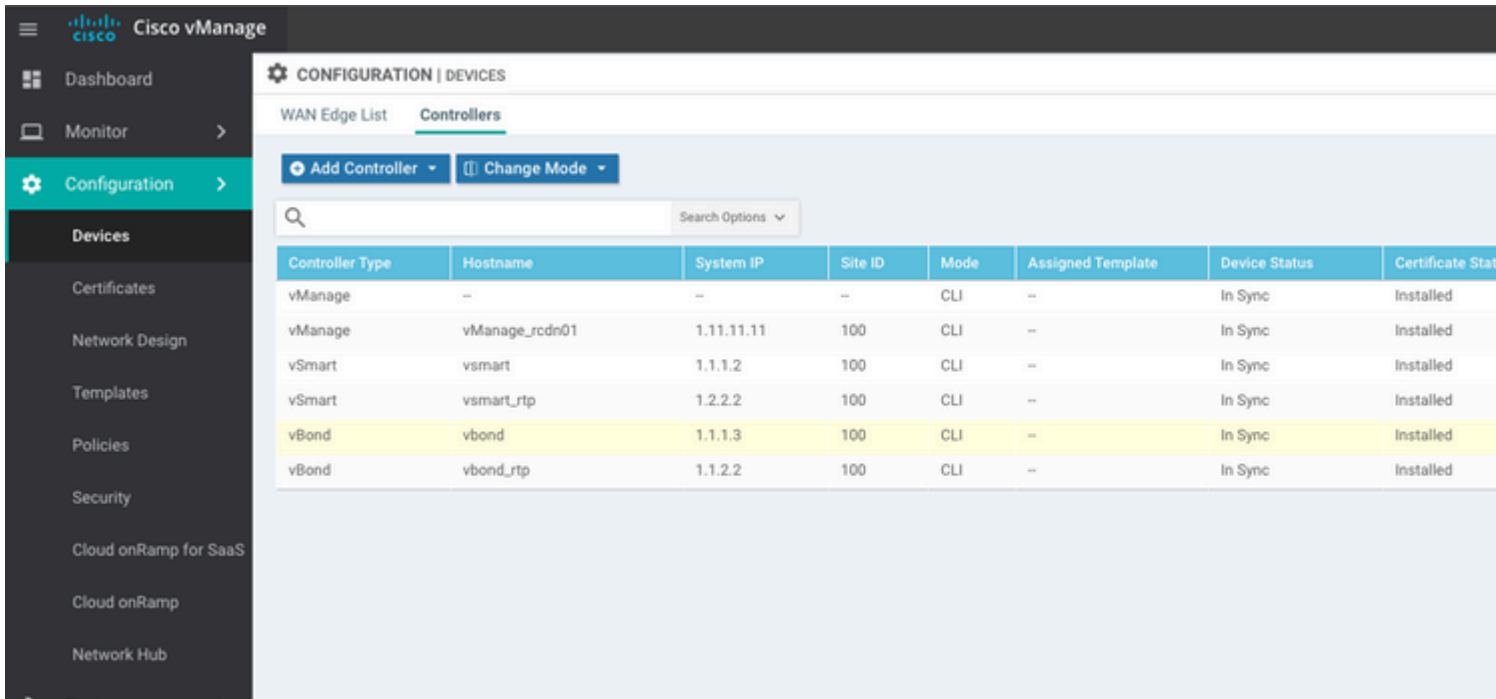
## Etapa 8. Reautenticar controladores

Atualmente, você pode observar que todas as políticas, modelos e configurações foram carregados no vManage, mas todos os controladores estão inoperantes.

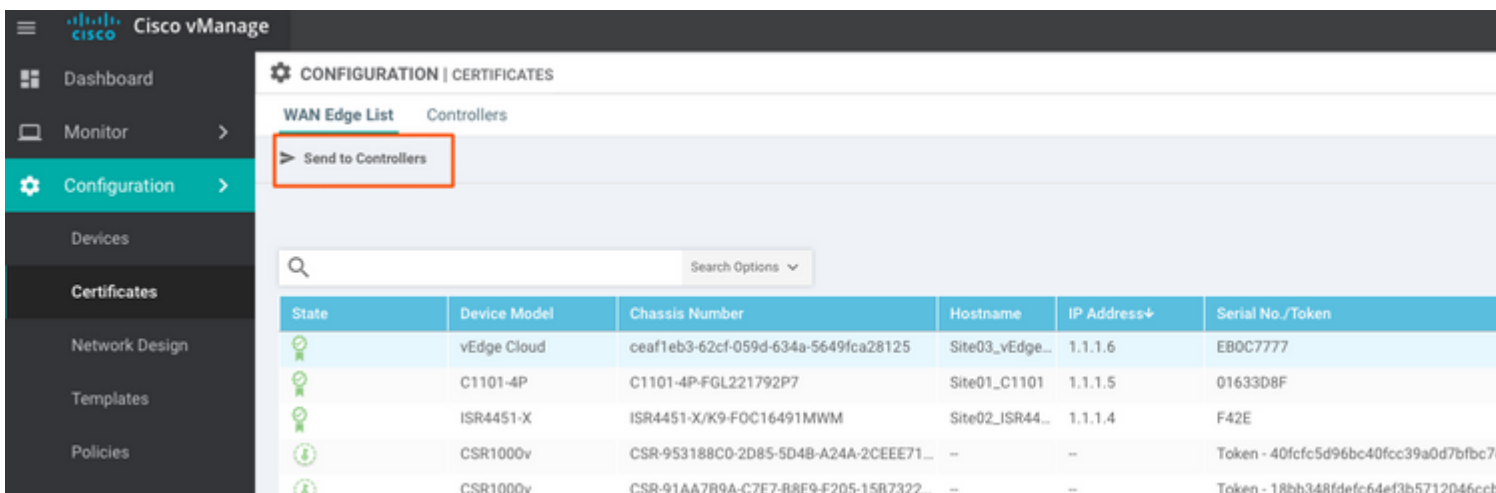
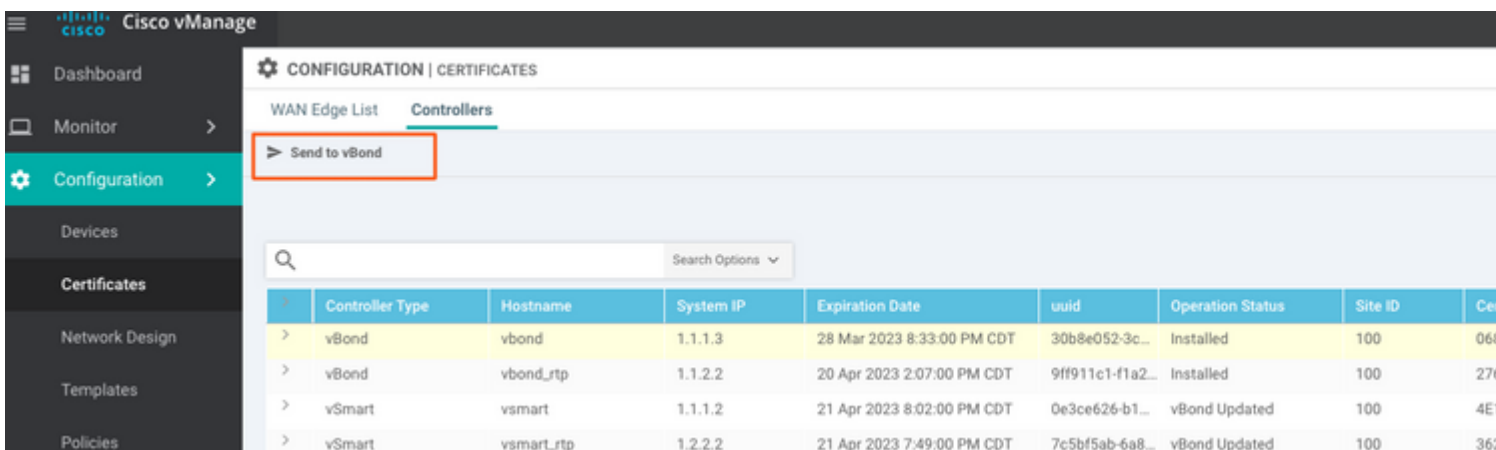


Você precisa autenticar novamente todos os controladores.

Navegue até `Configuration > Devices`. Edite cada controlador e preencha o endereço IP de gerenciamento (o IP de gerenciamento pode ser encontrado na configuração local) nome de usuário e senha.



## Etapa 9. Enviar atualizações para controladores



Agora, todos os dispositivos podem ser gerenciados pelo vManage.



- Dashboard
- Monitor
- Configuration
- Tools
- Maintenance
- Administration
- vAnalytics

DASHBOARD

2 ↑ vSmart - 2
3 ↑ WAN Edge - 3
2 ↑ vBond - 2
1 vManage - 1

Control Status (Total 4)



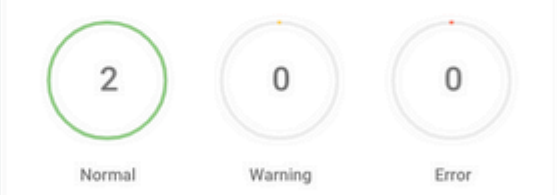
Site Health (Total 2)



WAN Edge Inventory

Total	15
Authorized	15
Deployed	3
Staging	0

WAN Edge Health (Total 2)



Top Applications

No data to display

Application-Aware Routing

Tunnel Endpoints	Avg. Latency (ms)	Avg. ...
Site02_ISR4451:default-Site03_vEdge_Cloud...	50.5	0.0
Site01_C1101:default-Site02_ISR4451:default	32.167	0.0
Site02_ISR4451:default-Site01_C1101:default	32	0
Site01_C1101:default-Site03_vEdge_Cloud.d...	25.917	0

- Dashboard
- Monitor
- Configuration
- Devices
- Certificates
- Network Design
- Templates
- Policies
- Security
- Cloud onRamp for SaaS
- Cloud onRamp
- Network Hub

CONFIGURATION | TEMPLATES

Device Feature

Add Template

Template Type: Non-Default Search Options

Name	Description	Type	Device Model	Device Templates	Devices Attached
vEdge_VPN_0	Default Transport VPN tem...	WAN Edge VPN	C1111-4PLTEEA C1117-4P...	0	0
Default_AAA	Default AAA template settin...	AAA	C1111-4PLTEEA C1117-4P...	1	1
cEdge_VPN_0	Default Transport VPN tem...	WAN Edge VPN	C1111-4PLTEEA C1117-4P...	1	1
vEdge_VPN_512_Interface	VPN 512 interface config	WAN Edge Interface	C1111-4PLTEEA C1117-4P...	0	0
vEdge_VPN_0_Interface	VPN 0 interface config	WAN Edge Interface	C1111-4PLTEEA C1117-4P...	0	0
Default_Banner	Banner for amaugust.cisco	Banner	ISR4451-X C1101-4P vEd...	1	1
vEdge_VPN_512	VPN 512 add default route	WAN Edge VPN	C1111-4PLTEEA C1117-4P...	0	0
cEdge_VPN_0_Interface	VPN 0 interface config	WAN Edge Interface	C1111-4PLTEEA C1117-4P...	1	1
cEdge_VPN_512	VPN 512 add default route	WAN Edge VPN	C1111-4PLTEEA C1117-4P...	1	1
cEdge_VPN_512_Interface	VPN 512 interface config	WAN Edge Interface	C1111-4PLTEEA C1117-4P...	1	1

## Sobre esta tradução

A Cisco traduziu este documento com a ajuda de tecnologias de tradução automática e humana para oferecer conteúdo de suporte aos seus usuários no seu próprio idioma, independentemente da localização.

Observe que mesmo a melhor tradução automática não será tão precisa quanto as realizadas por um tradutor profissional.

A Cisco Systems, Inc. não se responsabiliza pela precisão destas traduções e recomenda que o documento original em inglês ([link fornecido](#)) seja sempre consultado.