

# Configurar várias WebBridges do CMS por meio do Expressway

## Contents

[Introduction](#)

[Prerequisites](#)

[Requirements](#)

[Componentes Utilizados](#)

[Informações de Apoio](#)

[Configurar](#)

[Diagrama de Rede](#)

[Configurações](#)

[Verificar](#)

[Troubleshoot](#)

## Introduction

Este documento descreve as etapas para configurar, verificar e solucionar problemas de Cisco Meeting Server (CMS) vários WebBridges (WB) através do Expressway para WebRTC.

## Prerequisites

### Requirements

A Cisco recomenda que você tenha conhecimento destes tópicos:

- Expressway X8.11 e posteriores
- Servidor do CMS 2.3 e posteriores
- Tradução de Endereço de Rede (NAT)
- Passagem usando retransmissões em torno do NAT (TURN)
- Utilitários de passagem de sessão para NAT (STUN)
- Domain Name System (DNS)

Pré-requisitos de configuração:

- Para se referir a uma guia de um único proxy WB por meio do Expressway, [clique aqui](#)
- Cluster de banco de dados de todos os nós CMS, [clique aqui para a guia de configuração](#)
- WB, Protocolo extensível de mensagens e presença (XMPP) e CallBridge (CB) configurado e ativado no CMS, [clique aqui para obter a guia de configuração](#)
- Cluster de nós CB, [clique aqui para a guia de configuração](#)

### Componentes Utilizados

- Expressway

- CMS 2.3.4 (3 nós)

The information in this document was created from the devices in a specific lab environment. Se a configuração estiver ativa, certifique-se de que você compreenda o impacto potencial de qualquer configuração ou comando.

## Informações de Apoio

Suporte de proxy de WebRTC com vários WB por meio do Expressway foi adicionado ao Expressway da versão X8.11, que permite a redundância e balanceamento de carga entre PDT.

Em versões anteriores do X8.11 somente o balanceamento de carga é suportado e as conexões falham quando o WB escolhido pelo Expressway está inoperante.

Expressway-C descobre os endereços IP WB consultando o DNS com o uso do **cliente de conta de convidado URl** de X8.11, em seguida, usa round robin para distribuir conexões WebRTC uniformemente entre esses EDT.

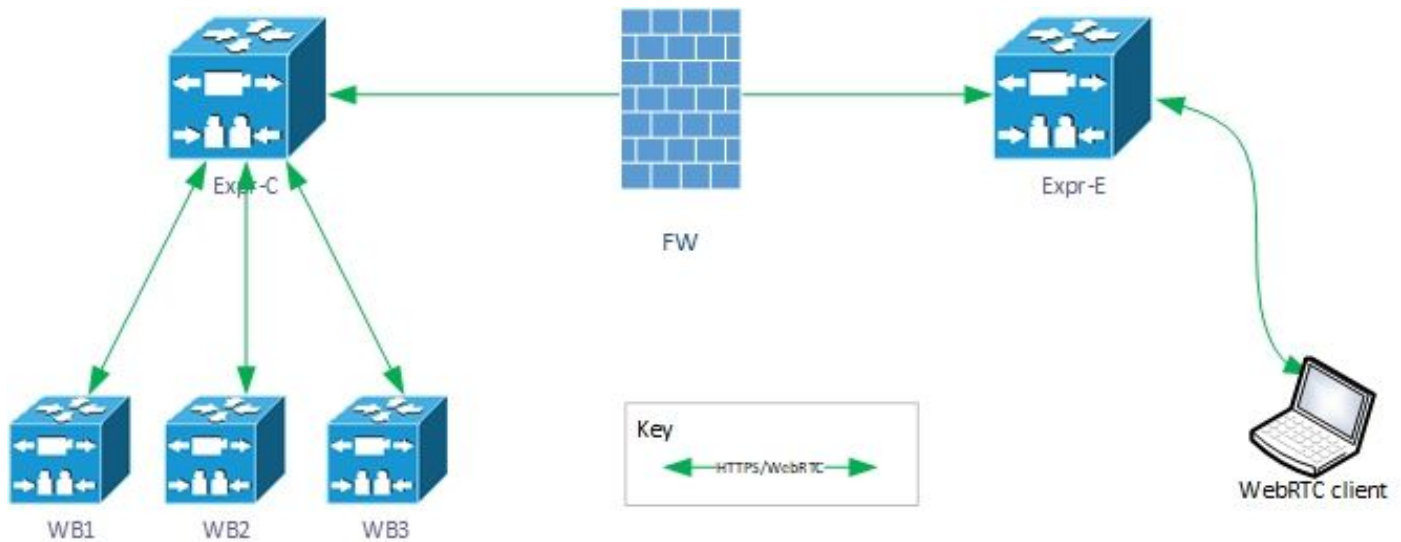
O Expressway-C agora mantém uma lista dinâmica de endereços IP que ele sabe serem WB com o uso desses processos:

- Ele consulta o DNS (a cada 60 minutos aproximadamente) com o uso da (**cliente de conta de convidado URI**) para detectar alterações deliberadas na sua implantação; Por exemplo, os endereços de host que estão sendo adicionados ou removidos do registro de serviço (SRV)
- Em seguida, ele investiga os endereços de host retornados pelo DNS para verificar se eles estão acessíveis e se eles são WB (com o uso de uma chamada de API)
- Se um endereço não está acessível, ou o host não é um WB, em seguida, o Expressway-C para de enviar conexões WebRTC para esse endereço e os endereços desse tipo são marcados com o status **Failed (Falha) na página CMS no Expressway-C**

**Note:** Este documento é voltado para a integração de vários WB ao Expressway e não para a configuração completa do proxy WebRTC, coberta no guia do primeiro tópico dos pré-requisitos de configuração.

## Configurar

### Diagrama de Rede



## Configurações

1. Configure esses registros SRV de DNS para cada nó WB ao qual é resolvido o cliente da conta de convidado URI:

Neste exemplo, o seguinte se aplica:

Cliente de conta de convidado URI: **joinext.vngtp.cms**

FQDN WB1: **cmsvngtp.vngtp.cms**

FQDN WB2: **cms2.vngtp.cms**

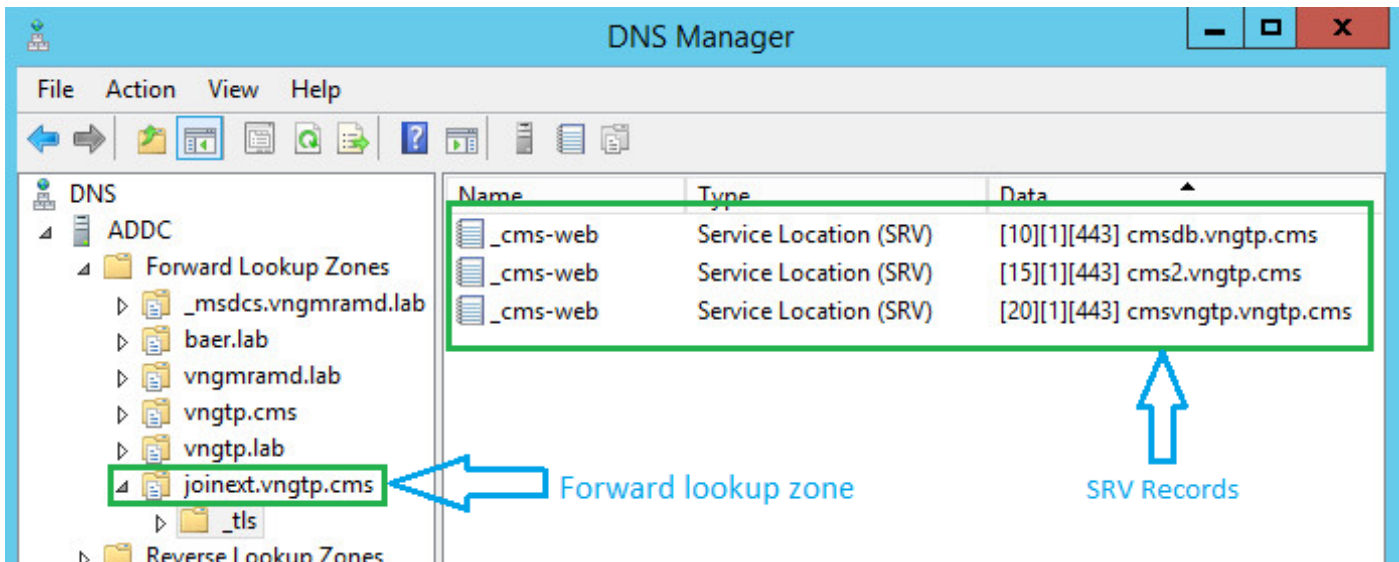
FQDN WB3: **cmsdb.vngtp.cms**

**Note:** O abaixo pressupõe que **cmsdb.vngtp.cms** tem mais capacidade que os outros callbridges, de modo que a prioridade é menor para permitir mais conexões do Expressway-C.

Esses registros SRV de DNS estão configurados para cada host Nome de domínio totalmente qualificado(FQDN):

Registro SRV	Porta	Prioridade	Peso	Resolve em
_cms-web._tls.joinext.vngtp.cms	443	20	1	cmsvngtp.vngtp.cms
_cms-web._tls.joinext.vngtp.cms	443	15	1	cms2.vngtp.cms
_cms-web._tls.joinext.vngtp.cms	443	10	1	cmsdb.vngtp.cms

Exemplo de servidor DNS:



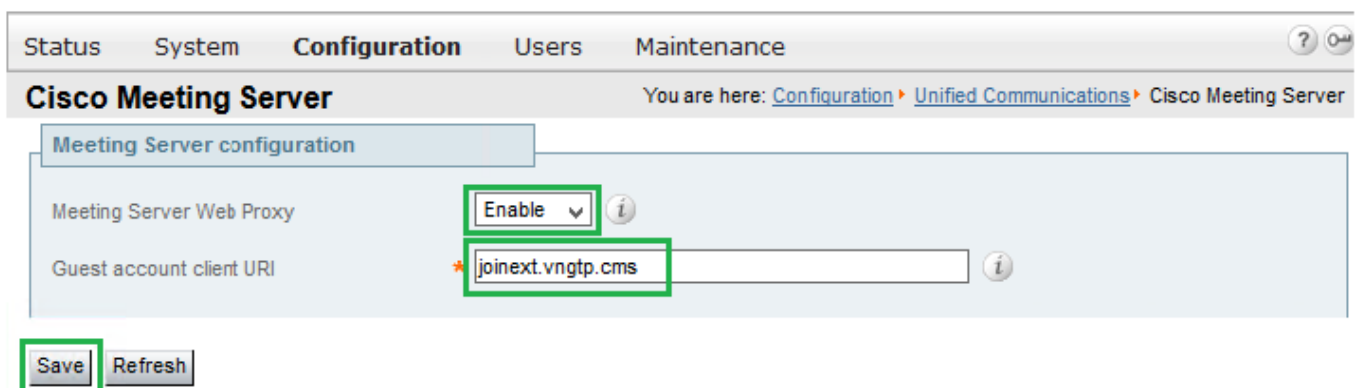
**Note:** Para permitir melhor balanceamento de carga de conexões WebRTC via Expressway (supondo que todos os servidores tenham a mesma capacidade), assegure que a prioridade e o peso sejam os mesmos para todos os registros SRV acima, consulte o exemplo abaixo:

Registro SRV	Porta	Prioridade	Peso	Resolve em
_cms-web._tls.joinext.vngtp.cms	443	0	0	cmsvngtp.vngtp.cms
_cms-web._tls.joinext.vngtp.cms	443	0	0	cms2.vngtp.cms
_cms-web._tls.joinext.vngtp.cms	443	0	0	cmsdb.vngtp.cms

2. Integre WB no Expressway-C com o uso do FQDN externo (para ser usado pelo terceiro externo):

- Navegue até **Configuración > Unified Communications > Cisco Meeting Server (Configuração > Comunicações unificadas > Cisco Meeting Server)**
- Digite o FQDN na **URI do cliente de conta de convidado**
- Em seguida, selecione **Save (Salvar)**

Um exemplo é mostrado na imagem:



# Verificar

Use esta seção para confirmar se a sua configuração funciona corretamente.

Marque para garantir que o Expressway-C foi capaz de se conectar a todos WBs em que o FQDN resolve.

Navegue até **Configurariön > Unified Communications > Cisco Meeting Server** (Configuração > Comunicações unificadas > Cisco Meeting Server).

Depois que o Expresssway-C acessar o WB, o Status será **Active** (Ativo), como mostra a imagem:

Guest account client URI resolved to the following targets				
Name	Address	Priority	Weight	Status
joinext.vngtp.cms	192.168.1.66	20	1	Active
joinext.vngtp.cms	192.168.1.211	15	1	Active
joinext.vngtp.cms	192.168.1.212	10	1	Active

Alguma revisão de registro do que acontece quando o WB é adicionado ao Expressway-c:

a. O Expressway-C cria um objeto UUID para o FQDN Webbridge em seu banco de dados para os execuções de comando:

```
2018-07-09T14:09:10.773+02:00 vcsc httpd[8724]: web: Event="System Configuration Changed"
Detail="commands/cmsadd/uuid - created with value: 'd86cf754-dc5c-438f-900f-51e5c702b94e'" Src-
ip="192.168.1.5" Src-port="51223" User="admin" Level="1" UTCTime="2018-07-09 12:09:10"
2018-07-09T14:09:10.773+02:00 vcsc httpd[8724]: web: Event="System Configuration Changed"
Detail="commands/cmsadd/time_started - created with value: '0'" Src-ip="192.168.1.5" Src-
port="51223" User="admin" Level="1" UTCTime="2018-07-09 12:09:10"
2018-07-09T14:09:10.773+02:00 vcsc httpd[8724]: web: Event="System Configuration Changed"
Detail="commands/cmsadd/time_finished - created with value: '0'" Src-ip="192.168.1.5" Src-
port="51223" User="admin" Level="1" UTCTime="2018-07-09 12:09:10"
2018-07-09T14:09:10.773+02:00 vcsc httpd[8724]: web: Event="System Configuration Changed"
Detail="commands/cmsadd/command_state - created with value: 'queued'" Src-ip="192.168.1.5" Src-
port="51223" User="admin" Level="1" UTCTime="2018-07-09 12:09:10"
2018-07-09T14:09:10.773+02:00 vcsc httpd[8724]: web: Event="System Configuration Changed"
Detail="commands/cmsadd/command_error - created with value: ''" Src-ip="192.168.1.5" Src-
port="51223" User="admin" Level="1" UTCTime="2018-07-09 12:09:10"
2018-07-09T14:09:10.773+02:00 vcsc httpd[8724]: web: Event="System Configuration Changed"
Detail="commands/cmsadd/name - created with value: 'joinext.vngtp.cms'" Src-ip="192.168.1.5"
Src-port="51223" User="admin" Level="1" UTCTime="2018-07-09 12:09:10"
```

b. Consulta o DNS para os registros SRV **\_cms-web.\_tls.** < WB\_FQDN >, neste exemplo **\_cms-web.\_tls.joinext.vngtp.cms**:

```
2052018-07-09 12:09:11.029192.168.1.64192.168.1.61DNS91Standard query 0xfb10 SRV _cms-
web._tls.joinext.vngtp.cms
2062018-07-09 12:09:11.032192.168.1.61192.168.1.64DNS246Standard query response 0xfb10 SRV _cms-
web._tls.joinext.vngtp.cms SRV 15 1 443 cms2.vngtp.cms SRV 20 1 443 cmsvngtp.vngtp.cms SRV 10 1
443 cmsdb.vngtp.cms A 192.168.1.211 A 192.168.1.66 A 192.168.1.212
```

c. Cria entradas individuais em seu banco de dados para cada WB em relação a URI de união externa usada para integrá-los:

2018-07-09T14:09:11.187+02:00 vcsc UTCTime="2018-07-09 12:09:11,187" Event="System Configuration Changed" Node="clusterdb@127.0.0.1" PID="<0.488.0>" Detail="xconfiguration edgeCmsServerAddresses uuid cb7d5de8-1ab3-4a0d-a52a-8dbc885effeb name: joinext.vngtp.cms name: joinext.vngtp.cms"

2018-07-09T14:09:11.187+02:00 vcsc UTCTime="2018-07-09 12:09:11,187" Event="System Configuration Changed" Node="clusterdb@127.0.0.1" PID="<0.488.0>" Detail="xconfiguration edgeCmsServerAddresses uuid cb7d5de8-1ab3-4a0d-a52a-8dbc885effeb name: joinext.vngtp.cms guid: **81db7b67-2aa9-4f64-8d74-04c4037397a8**"

2018-07-09T14:09:11.187+02:00 vcsc UTCTime="2018-07-09 12:09:11,187" Event="System Configuration Changed" Node="clusterdb@127.0.0.1" PID="<0.488.0>" Detail="xconfiguration edgeCmsServerAddresses uuid cb7d5de8-1ab3-4a0d-a52a-8dbc885effeb name: joinext.vngtp.cms dnsname: **cms2.vngtp.cms**"

2018-07-09T14:09:11.187+02:00 vcsc UTCTime="2018-07-09 12:09:11,187" Event="System Configuration Changed" Node="clusterdb@127.0.0.1" PID="<0.488.0>" Detail="xconfiguration edgeCmsServerAddresses uuid cb7d5de8-1ab3-4a0d-a52a-8dbc885effeb name: joinext.vngtp.cms address: **192.168.1.211**"

2018-07-09T14:09:11.187+02:00 vcsc UTCTime="2018-07-09 12:09:11,187" Event="System Configuration Changed" Node="clusterdb@127.0.0.1" PID="<0.488.0>" Detail="xconfiguration edgeCmsServerAddresses uuid cb7d5de8-1ab3-4a0d-a52a-8dbc885effeb name: joinext.vngtp.cms priority: 15"

2018-07-09T14:09:11.187+02:00 vcsc UTCTime="2018-07-09 12:09:11,187" Event="System Configuration Changed" Node="clusterdb@127.0.0.1" PID="<0.488.0>" Detail="xconfiguration edgeCmsServerAddresses uuid cb7d5de8-1ab3-4a0d-a52a-8dbc885effeb name: joinext.vngtp.cms weight: 1"

2018-07-09T14:09:11.187+02:00 vcsc UTCTime="2018-07-09 12:09:11,187" Event="System Configuration Changed" Node="clusterdb@127.0.0.1" PID="<0.488.0>" Detail="xconfiguration edgeCmsServerAddresses uuid cb7d5de8-1ab3-4a0d-a52a-8dbc885effeb name: joinext.vngtp.cms port: 443"

2018-07-09T14:09:11.193+02:00 vcsc UTCTime="2018-07-09 12:09:11,193" Event="System Configuration Changed" Node="clusterdb@127.0.0.1" PID="<0.488.0>" Detail="xconfiguration edgeCmsServerAddresses uuid 0408bdd0-9ada-45a0-834d-ccda166e8006 name: joinext.vngtp.cms name: joinext.vngtp.cms"

2018-07-09T14:09:11.193+02:00 vcsc UTCTime="2018-07-09 12:09:11,193" Event="System Configuration Changed" Node="clusterdb@127.0.0.1" PID="<0.488.0>" Detail="xconfiguration edgeCmsServerAddresses uuid 0408bdd0-9ada-45a0-834d-ccda166e8006 name: joinext.vngtp.cms guid: **97d8fa86-7de4-4410-9767-7bc8b1eeaced**"

2018-07-09T14:09:11.193+02:00 vcsc UTCTime="2018-07-09 12:09:11,193" Event="System Configuration Changed" Node="clusterdb@127.0.0.1" PID="<0.488.0>" Detail="xconfiguration edgeCmsServerAddresses uuid 0408bdd0-9ada-45a0-834d-ccda166e8006 name: joinext.vngtp.cms dnsname: **cmsvngtp.vngtp.cms**"

2018-07-09T14:09:11.193+02:00 vcsc UTCTime="2018-07-09 12:09:11,193" Event="System Configuration Changed" Node="clusterdb@127.0.0.1" PID="<0.488.0>" Detail="xconfiguration edgeCmsServerAddresses uuid 0408bdd0-9ada-45a0-834d-ccda166e8006 name: joinext.vngtp.cms address: **192.168.1.66**"

2018-07-09T14:09:11.193+02:00 vcsc UTCTime="2018-07-09 12:09:11,193" Event="System Configuration Changed" Node="clusterdb@127.0.0.1" PID="<0.488.0>" Detail="xconfiguration edgeCmsServerAddresses uuid 0408bdd0-9ada-45a0-834d-ccda166e8006 name: joinext.vngtp.cms priority: 20"

2018-07-09T14:09:11.193+02:00 vcsc UTCTime="2018-07-09 12:09:11,193" Event="System Configuration Changed" Node="clusterdb@127.0.0.1" PID="<0.488.0>" Detail="xconfiguration edgeCmsServerAddresses uuid 0408bdd0-9ada-45a0-834d-ccda166e8006 name: joinext.vngtp.cms weight: 1"

2018-07-09T14:09:11.193+02:00 vcsc UTCTime="2018-07-09 12:09:11,193" Event="System Configuration Changed" Node="clusterdb@127.0.0.1" PID="<0.488.0>" Detail="xconfiguration edgeCmsServerAddresses uuid 0408bdd0-9ada-45a0-834d-ccda166e8006 name: joinext.vngtp.cms port: 443"

2018-07-09T14:09:11.206+02:00 vcsc UTCTime="2018-07-09 12:09:11,206" Event="System Configuration Changed" Node="clusterdb@127.0.0.1" PID="<0.488.0>" Detail="xconfiguration edgeCmsServerAddresses uuid b151839e-a0dd-4176-bbed-ad28e05e9283 name: joinext.vngtp.cms name: joinext.vngtp.cms"

2018-07-09T14:09:11.206+02:00 vcsc UTCTime="2018-07-09 12:09:11,206" Event="System Configuration Changed" Node="clusterdb@127.0.0.1" PID="<0.488.0>" Detail="xconfiguration edgeCmsServerAddresses uuid b151839e-a0dd-4176-bbed-ad28e05e9283 name: joinext.vngtp.cms guid: **9c788380-6601-4dba-96e0-739511728369**"

2018-07-09T14:09:11.206+02:00 vcsc UTCTime="2018-07-09 12:09:11,206" Event="System Configuration Changed" Node="clusterdb@127.0.0.1" PID="<0.488.0>" Detail="xconfiguration edgeCmsServerAddresses uuid b151839e-a0dd-4176-bbed-ad28e05e9283 name: joinext.vngtp.cms dnsname: **cmsdb.vngtp.cms**"

2018-07-09T14:09:11.206+02:00 vcsc UTCTime="2018-07-09 12:09:11,206" Event="System Configuration Changed" Node="clusterdb@127.0.0.1" PID="<0.488.0>" Detail="xconfiguration edgeCmsServerAddresses uuid b151839e-a0dd-4176-bbed-ad28e05e9283 name: joinext.vngtp.cms address: **192.168.1.212**"

2018-07-09T14:09:11.206+02:00 vcsc UTCTime="2018-07-09 12:09:11,206" Event="System Configuration Changed" Node="clusterdb@127.0.0.1" PID="<0.488.0>" Detail="xconfiguration edgeCmsServerAddresses uuid b151839e-a0dd-4176-bbed-ad28e05e9283 name: joinext.vngtp.cms priority: 10"

2018-07-09T14:09:11.206+02:00 vcsc UTCTime="2018-07-09 12:09:11,206" Event="System Configuration Changed" Node="clusterdb@127.0.0.1" PID="<0.488.0>" Detail="xconfiguration edgeCmsServerAddresses uuid b151839e-a0dd-4176-bbed-ad28e05e9283 name: joinext.vngtp.cms weight: 1"

2018-07-09T14:09:11.206+02:00 vcsc UTCTime="2018-07-09 12:09:11,206" Event="System Configuration Changed" Node="clusterdb@127.0.0.1" PID="<0.488.0>" Detail="xconfiguration edgeCmsServerAddresses uuid b151839e-a0dd-4176-bbed-ad28e05e9283 name: joinext.vngtp.cms port: 443"

d. O Expressway-C cria regras gerais de acesso para o tráfego HTTPS e WebSocket na lista de permissões HTTP na Regras de entrada automáticas para o caminho geral para o WB:

Type	Protocol	Ports	Match type	Path	Methods
Meeting Server web bridges	https	443	Prefix	/	GET, POST, PUT, HEAD, DELETE
Meeting Server web bridges	wss	443	Prefix	/	GET, POST, PUT, HEAD, DELETE

## Troubleshoot

Esta seção disponibiliza informações para a solução de problemas de configuração.

Aqui estão alguns problemas típicos vistos depois de integrar WB ao Expressway:

1. Prioridade e peso não são vistos na página CMS no Expressway-C, como mostrado na imagem:

The screenshot shows the Cisco Meeting Server configuration interface. The 'Meeting Server configuration' section is expanded to show 'Meeting Server Web Proxy' set to 'Enable' and 'Guest account client URI' set to 'joinext.vngtp.cms'. Below this, a table titled 'Guest account client URI resolved to the following targets' lists three entries. The 'Priority' and 'Weight' columns for these entries are highlighted with a red box, indicating they are missing or not visible.

Name	Address	Priority	Weight	Status
joinext.vngtp.cms	192.168.1.66	-	-	Active
joinext.vngtp.cms	192.168.1.211	-	-	Active
joinext.vngtp.cms	192.168.1.212	-	-	Active

Registros necessários:

- Registros de diagnóstico que incluem **tcpdump do Expressway-C Navegue até Manutenção > Diagnóstico > Log de diagnóstico** Certifique-se de que **Take tcpdump while logging (LEvar tcpdump durante o registro)** esteja marcado, em seguida, selecione **Start New Log (Iniciar novo registro)**

O que procurar nos registros:

a. Nos registros de diagnóstico:

- Abra os registros de diagnósticos com o uso de um editor de texto, (por exemplo **Notepad +**), e pesquise a **URL de união com o uso da opção Find All in Current Document (Localizar tudo no documento atual)**
- Você verá nos registros que o Expressway-C não cria o **UUID WB** individuais com o uso de seu **FQDN real**, em vez disso, cria com o uso da **URL de união geral**, conforme mostrado neste trecho de registro:

```
2018-07-13T14:44:21.688+02:00 vcsc UTCTime="2018-07-13 12:44:21,688" Event="System Configuration Changed" Node="clusterdb@127.0.0.1" PID="<0.488.0>" Detail="xconfiguration edgeCmsServerAddresses uuid 0ab708c9-4ce1-47b3-9bb6-2964baf39bb3 name: joinext.vngtp.cms guid: 97d8fa86-7de4-4410-9767-7bc8b1eeaced"
2018-07-13T14:44:21.688+02:00 vcsc UTCTime="2018-07-13 12:44:21,688" Event="System Configuration Changed" Node="clusterdb@127.0.0.1" PID="<0.488.0>" Detail="xconfiguration edgeCmsServerAddresses uuid 0ab708c9-4ce1-47b3-9bb6-2964baf39bb3 name: joinext.vngtp.cms dnsname: joinext.vngtp.cms"
2018-07-13T14:44:21.688+02:00 vcsc UTCTime="2018-07-13 12:44:21,688" Event="System Configuration Changed" Node="clusterdb@127.0.0.1" PID="<0.488.0>" Detail="xconfiguration edgeCmsServerAddresses uuid 0ab708c9-4ce1-47b3-9bb6-2964baf39bb3 name: joinext.vngtp.cms address: 192.168.1.66"
2018-07-13T14:44:21.688+02:00 vcsc UTCTime="2018-07-13 12:44:21,688" Event="System Configuration Changed" Node="clusterdb@127.0.0.1" PID="<0.488.0>" Detail="xconfiguration edgeCmsServerAddresses uuid 0ab708c9-4ce1-47b3-9bb6-2964baf39bb3 name: joinext.vngtp.cms priority: 65536"
2018-07-13T14:44:21.688+02:00 vcsc UTCTime="2018-07-13 12:44:21,688" Event="System Configuration Changed" Node="clusterdb@127.0.0.1" PID="<0.488.0>" Detail="xconfiguration edgeCmsServerAddresses uuid 0ab708c9-4ce1-47b3-9bb6-2964baf39bb3 name: joinext.vngtp.cms weight: 0"
2018-07-13T14:44:21.688+02:00 vcsc UTCTime="2018-07-13 12:44:21,688" Event="System Configuration Changed" Node="clusterdb@127.0.0.1" PID="<0.488.0>" Detail="xconfiguration edgeCmsServerAddresses uuid 0ab708c9-4ce1-47b3-9bb6-2964baf39bb3 name: joinext.vngtp.cms port: 443"
2018-07-13T14:44:21.702+02:00 vcsc UTCTime="2018-07-13 12:44:21,702" Event="System Configuration Changed" Node="clusterdb@127.0.0.1" PID="<0.488.0>" Detail="xconfiguration edgeCmsServerAddresses uuid 4b1b99fb-1b8f-400e-b066-d8906ffcd6fc name: joinext.vngtp.cms name: joinext.vngtp.cms" 2018-07-13T14:44:21.702+02:00 vcsc UTCTime="2018-07-13 12:44:21,702" Event="System Configuration Changed" Node="clusterdb@127.0.0.1" PID="<0.488.0>" Detail="xconfiguration edgeCmsServerAddresses uuid 4b1b99fb-1b8f-400e-b066-d8906ffcd6fc name: joinext.vngtp.cms guid: 81db7b67-2aa9-4f64-8d74-04c4037397a8"
2018-07-13T14:44:21.702+02:00 vcsc UTCTime="2018-07-13 12:44:21,702" Event="System Configuration Changed" Node="clusterdb@127.0.0.1" PID="<0.488.0>" Detail="xconfiguration edgeCmsServerAddresses uuid 4b1b99fb-1b8f-400e-b066-d8906ffcd6fc name: joinext.vngtp.cms dnsname: joinext.vngtp.cms"
2018-07-13T14:44:21.702+02:00 vcsc UTCTime="2018-07-13 12:44:21,702" Event="System Configuration Changed" Node="clusterdb@127.0.0.1" PID="<0.488.0>" Detail="xconfiguration edgeCmsServerAddresses uuid 4b1b99fb-1b8f-400e-b066-d8906ffcd6fc name: joinext.vngtp.cms address: 192.168.1.211"
2018-07-13T14:44:21.702+02:00 vcsc UTCTime="2018-07-13 12:44:21,702" Event="System Configuration Changed" Node="clusterdb@127.0.0.1" PID="<0.488.0>" Detail="xconfiguration edgeCmsServerAddresses uuid 4b1b99fb-1b8f-400e-b066-d8906ffcd6fc name: joinext.vngtp.cms priority: 65536"
```



```

2018-07-13T14:44:21.702+02:00 vcsc UTCTime="2018-07-13 12:44:21,702" Event="System Configuration
Changed" Node="clusterdb@127.0.0.1" PID="<0.488.0>" Detail="xconfiguration
edgeCmsServerAddresses uuid 4b1b99fb-1b8f-400e-b066-d8906ffcd6fc name: joinext.vngtp.cms weight:
0"
2018-07-13T14:44:21.702+02:00 vcsc UTCTime="2018-07-13 12:44:21,702" Event="System Configuration
Changed" Node="clusterdb@127.0.0.1" PID="<0.488.0>" Detail="xconfiguration
edgeCmsServerAddresses uuid 4b1b99fb-1b8f-400e-b066-d8906ffcd6fc name: joinext.vngtp.cms port:
443"
2018-07-13T14:44:21.706+02:00 vcsc UTCTime="2018-07-13 12:44:21,706" Event="System Configuration
Changed" Node="clusterdb@127.0.0.1" PID="<0.488.0>" Detail="xconfiguration
edgeCmsServerAddresses uuid 6cc95c70-0636-4190-85f2-333b86b29c91 name: joinext.vngtp.cms name:
joinext.vngtp.cms" 2018-07-13T14:44:21.706+02:00 vcsc UTCTime="2018-07-13 12:44:21,706"
Event="System Configuration Changed" Node="clusterdb@127.0.0.1" PID="<0.488.0>"
Detail="xconfiguration edgeCmsServerAddresses uuid 6cc95c70-0636-4190-85f2-333b86b29c91 name:
joinext.vngtp.cms guid: 9c788380-6601-4dba-96e0-739511728369"
2018-07-13T14:44:21.706+02:00 vcsc UTCTime="2018-07-13 12:44:21,706" Event="System Configuration
Changed" Node="clusterdb@127.0.0.1" PID="<0.488.0>" Detail="xconfiguration
edgeCmsServerAddresses uuid 6cc95c70-0636-4190-85f2-333b86b29c91 name: joinext.vngtp.cms
dnsname: joinext.vngtp.cms"
2018-07-13T14:44:21.706+02:00 vcsc UTCTime="2018-07-13 12:44:21,706" Event="System Configuration
Changed" Node="clusterdb@127.0.0.1" PID="<0.488.0>" Detail="xconfiguration
edgeCmsServerAddresses uuid 6cc95c70-0636-4190-85f2-333b86b29c91 name: joinext.vngtp.cms
address: 192.168.1.212"
2018-07-13T14:44:21.706+02:00 vcsc UTCTime="2018-07-13 12:44:21,706" Event="System Configuration
Changed" Node="clusterdb@127.0.0.1" PID="<0.488.0>" Detail="xconfiguration
edgeCmsServerAddresses uuid 6cc95c70-0636-4190-85f2-333b86b29c91 name: joinext.vngtp.cms
priority: 65536"
2018-07-13T14:44:21.706+02:00 vcsc UTCTime="2018-07-13 12:44:21,706" Event="System Configuration
Changed" Node="clusterdb@127.0.0.1" PID="<0.488.0>" Detail="xconfiguration
edgeCmsServerAddresses uuid 6cc95c70-0636-4190-85f2-333b86b29c91 name: joinext.vngtp.cms weight:
0"
2018-07-13T14:44:21.706+02:00 vcsc UTCTime="2018-07-13 12:44:21,706" Event="System Configuration
Changed" Node="clusterdb@127.0.0.1" PID="<0.488.0>" Detail="xconfiguration
edgeCmsServerAddresses uuid 6cc95c70-0636-4190-85f2-333b86b29c91 name: joinext.vngtp.cms port:
443"

```

## b. Na captura de pacote:

- Filtro com o uso da cadeia de caracteres **DNS**
- No resultado, você verá que a consulta DNS para os registros de SRV falha, como mostra a imagem:

No.	Time	Source	Destination	Protocol	Length	Info
15	2018-07-13 12:44:07.963	192.168.1.64	192.168.1.61	DNS	74	Standard query 0x00a6 AAAA vcse.vngtp.lab
16	2018-07-13 12:44:07.963	192.168.1.61	192.168.1.64	DNS	135	Standard query response 0x00a6 AAAA vcse.vngtp.lab SOA addc.vngmramd.lab
112	2018-07-13 12:44:11.619	192.168.1.64	192.168.1.61	DNS	85	Standard query 0x13ea PTR 200.36.48.10.in-addr.arpa
130	2018-07-13 12:44:12.927	192.168.1.61	192.168.1.64	DNS	85	Standard query response 0x13ea Server failure PTR 200.36.48.10.in-addr.arpa
162	2018-07-13 12:44:17.931	192.168.1.64	192.168.1.61	DNS	85	Standard query 0xc823 PTR 200.36.48.10.in-addr.arpa
167	2018-07-13 12:44:21.568	192.168.1.64	192.168.1.61	DNS	91	Standard query 0xd373 SRV _cms-web._tls.joinext.vngtp.cms
168	2018-07-13 12:44:21.568	192.168.1.61	192.168.1.64	DNS	172	Standard query response 0xd373 No such name SRV _cms-web._tls.joinext.vngtp.cms SOA addc.vngmramd.lab
169	2018-07-13 12:44:21.569	192.168.1.64	192.168.1.61	DNS	104	Standard query 0x9792 SRV _cms-web._tls.joinext.vngtp.cms.vngmramd.lab

## Solução:

Verifique e veja se você tem esses no servidor DNS usado pelo Expressway-c:

- Zona de pesquisa direta (FLZ) com a **URI do cliente de conta de convidado e não apenas para o domínio de URI**
- Verifique se você tem os registros SRV (**\_cms-web.\_tls. < WB\_FQDN >**) configurados neste FLZ e contém a prioridade e peso relevantes

2. Um ou mais WB estão em **Active status (status ativo)** depois de adicionar o cluster com o uso

da URL de união extern, como mostra a imagem:

Guest account client URI resolved to the following targets				
Name	Address	Priority	Weight	Status
joinext.vngtp.cms	192.168.1.211	15	1	Active
joinext.vngtp.cms	192.168.1.212	20	1	Failed
joinext.vngtp.cms	192.168.1.66	10	1	Active

Registros necessários:

- Registros de diagnóstico que incluem tcpdump do Expressway-C
- Captura de pacotes do servidor mostra Failed state (Estado de falha) com o uso do comando `pcap < interface > na interface da linha de comando (CLI)`, em que a interface é a ide escuta do WB

O que procurar nos registros:

a. Nos registros de diagnóstico:

- **Find All in Current Document** (Localizar tudo em documento atual) com o uso do Endereço IP do WB com falha
- O erro aqui é visto nos registros:

Detail="CMS check failed" Address="192.168.1.212", Error="[Errno 111] Connection refused"

b. Na captura de pacote:

- Filtre a captura de pacote com o uso da cadeia de caracteres `ip.addr== <Endereço IP do WB com falha>`
- Você verá as mensagens TCP SYN enviadas do Expressway-C para o WB e ,nesse caso, não SYN-ACK nem ACK são recebidos, como mostra a imagem:

No.	Time	Source	Destination	Protocol	Length	Info
301	2018-07-13 13:10:01.011	192.168.1.64	192.168.1.212	TCP	74	31630 → 443 [SYN] Seq=0 Win=29200 Len=0 MSS=1460 SACK_PERM=1 TSval=2866356001
302	2018-07-13 13:10:01.011	192.168.1.212	192.168.1.64	TCP	60	443 → 31630 [RST, ACK] Seq=1 Ack=1 Win=0 Len=0
1675	2018-07-13 13:15:01.048	192.168.1.64	192.168.1.212	TCP	74	31778 → 443 [SYN] Seq=0 Win=29200 Len=0 MSS=1460 SACK_PERM=1 TSval=2866656029
1676	2018-07-13 13:15:01.049	192.168.1.212	192.168.1.64	TCP	60	443 → 31778 [RST, ACK] Seq=1 Ack=1 Win=0 Len=0

- WB pcap mostrará que essas mensagens TCP SYN chegam, mas nenhuma resposta (SYN-ACK nem ACK) é enviada.

Solução:

Certifique-se de que WB está habilitado nesse nó CMS com o uso do comando `webbridge enable` na CLI.