

IPsec configureren tussen een Cisco IOS-router en een Cisco VPN-client 4.x voor Windows met RADIUS

Inhoud

[Inleiding](#)

[Voorwaarden](#)

[Vereisten](#)

[Gebruikte componenten](#)

[Achtergrondinformatie](#)

[Configureren](#)

[Netwerkdigram](#)

[Configuraties](#)

[RADIUS-serverconfiguratie](#)

[De RADIUS-server voor AAA-clients \(router\) configureren](#)

[De RADIUS-server voor groepsverificatie en -autorisatie configureren](#)

[De RADIUS-server voor gebruikersverificatie configureren](#)

[Configuratie van VPN-client 4.8](#)

[Verifiëren](#)

[Problemen oplossen](#)

[Opdrachten voor troubleshooting](#)

[Debug uitvoer](#)


[Routerlogboeken](#)

[Clientlogboeken](#)

[Gerelateerde informatie](#)

Inleiding

Dit document toont aan hoe u een verbinding tussen een Cisco IOS-router en de Cisco VPN-client 4.x kunt configureren met RADIUS voor groepsverificatie en gebruikersverificatie. Cisco IOS®-software release 12.2(8)T en latere ondersteuningsverbindingen vanuit Cisco VPN-client 3.x. De VPN Clients 3.x en 4.x gebruiken het beleid van Diffie Hellman (DH) groep 2. Met de opdracht `isakmp policy # groep 2` kunnen de VPN-clients verbinding maken.

 **Opmerking:** IPsec VPN-accounting is nu beschikbaar. Raadpleeg [IPsec VPN-accounting](#) voor meer informatie en voorbeeldconfiguraties.

Voorwaarden

Vereisten

Voordat u deze configuratie uitvoert, moet aan de volgende vereisten worden voldaan:

- Een pool van adressen die voor IPSec moeten worden toegewezen
- Een groep met de naam "3000clients" met een vooraf gedeelde sleutel van "cisco123"
- Groepsautorisatie en gebruikersverificatie op een RADIUS-server



Opmerking: RADIUS-accounting wordt momenteel niet ondersteund.

Gebruikte componenten

De informatie in dit document is gebaseerd op de volgende software- en hardware-versies:

- Een 2611 router die Cisco IOS-software release 12.2(8)T uitvoert.
- Cisco Secure ACS voor Windows (elke RADIUS-server moet werken).
- Cisco VPN Client voor Windows versie 4.8 (elke VPN-client 4.x moet werken).

De informatie in dit document is gebaseerd op de apparaten in een specifieke laboratoriumomgeving. Alle apparaten die in dit document worden beschreven, hadden een opgeschoonde (standaard)configuratie. Als uw netwerk live is, moet u de potentiële impact van elke opdracht begrijpen.

Dit is output van het bevel van de showversie op de router:

```
<#root>
```

```
vpn2611#
```

```
show version
```

```
Cisco Internetwork Operating System Software  
IOS (tm) C2600 Software (C2600-JK903S-M), Version 12.2(8)T,  
  RELEASE SOFTWARE (fc2)  
TAC Support: http://www.cisco.com/tac  
Copyright (c) 1986-2002 by cisco Systems, Inc.  
Compiled Thu 14-Feb-02 16:50 by ccai  
Image text-base: 0x80008070, data-base: 0x81816184
```

```
ROM: System Bootstrap, Version 11.3(2)XA4, RELEASE SOFTWARE (fc1)
```

```
vpn2611 uptime is 1 hour, 15 minutes  
System returned to ROM by reload  
System image file is "flash:c2600-jk9o3s-mz.122-8.T"
```

```
cisco 2611 (MPC860) processor (revision 0x203)  
  with 61440K/4096K bytes of memory.  
Processor board ID JAD04370EEG (2285146560)  
M860 processor: part number 0, mask 49  
Bridging software.  
X.25 software, Version 3.0.0.  
SuperLAT software (copyright 1990 by Meridian Technology Corp).  
TN3270 Emulation software.
```

2 Ethernet/IEEE 802.3 interface(s)
1 Serial network interface(s)
32K bytes of non-volatile configuration memory.
16384K bytes of processor board System flash (Read/Write)

Configuration register is 0x2102

Achtergrondinformatie

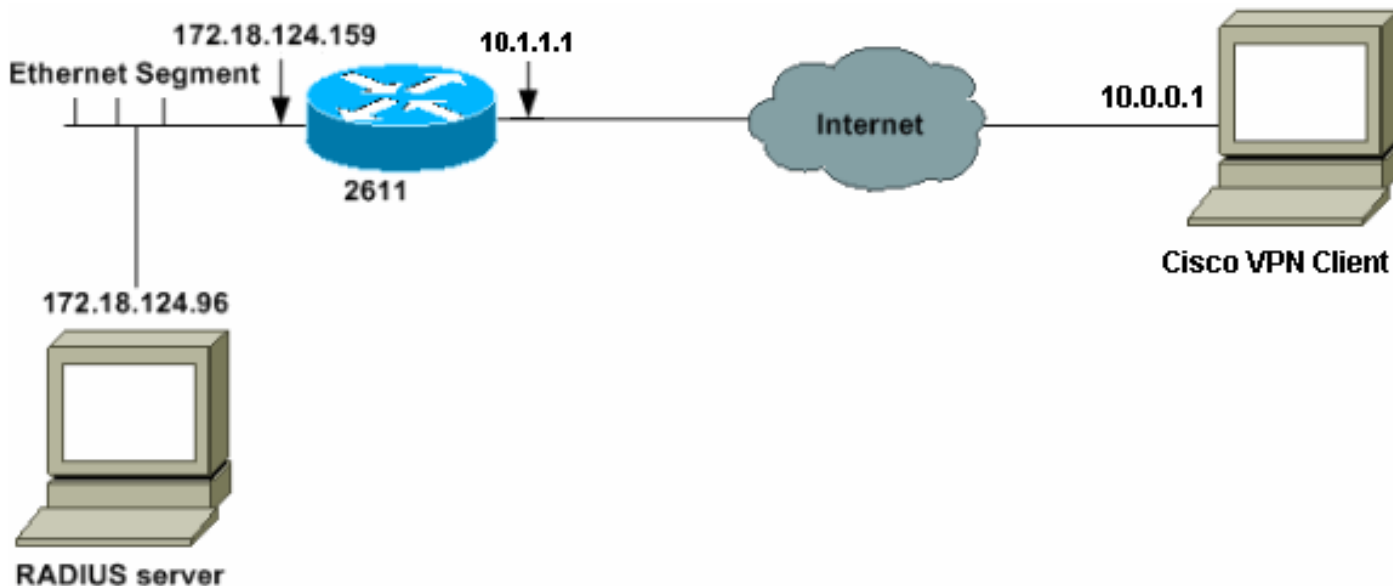
Dit document toont verificatie en autorisatie, zoals het toewijzen van de Windows Internet Naming Service (WINS) en Domain Naming Service (DNS), door de RADIUS-server. Als u geïnteresseerd bent in het uitvoeren van verificatie door de RADIUS-server en lokale autorisatie door de router, raadpleegt u [IPSec configureren tussen een Cisco IOS-router en een Cisco VPN-client 4.x voor Windows met RADIUS voor gebruikersverificatie](#).


Configureren

Deze sectie bevat informatie over het configureren van de functies die in dit document worden beschreven.

Netwerkdigram

Het netwerk in dit document is als volgt opgebouwd:



 Opmerking: de IP-adressen in dit voorbeeldnetwerk zijn niet routeerbaar op het wereldwijde internet omdat ze privé IP-adressen zijn in een laboratoriumnetwerk.

Configuraties

2611 router

<#root>

vpn2611#

show run

Building configuration...

Current configuration : 1884 bytes

!

version 12.2

service timestamps debug uptime

service timestamps log uptime

no service password-encryption

!

hostname vpn2611

!

!--- Enable AAA for user authentication and group authorization.

aaa new-model

!

!--- In order to enable extended authentication (Xauth) for user authentication,

!--- enable the

aaa authentication

commands.

!--- "Group radius" specifies RADIUS user authentication.

aaa authentication login userauthen group radius

!--- In order to enable group authorization,

!--- enable the

aaa authorization

commands.

aaa authorization network groupauthor group radius

!

!

ip subnet-zero

!

!

!

ip audit notify log

ip audit po max-events 100

!

!--- Create an Internet Security Association and

!--- Key Management Protocol (ISAKMP) policy for Phase 1 negotiations.

```
crypto isakmp policy 3
encr 3des
authentication pre-share
group 2
```

!
!

!--- Create the Phase 2 policy for actual data encryption.

```
crypto ipsec transform-set myset esp-3des esp-sha-hmac
```

!

*!--- Create a dynamic map and
!--- apply the transform set that was created.*

```
crypto dynamic-map dynmap 10
set transform-set myset
```

!

*!--- Create the actual crypto map,
!--- and apply the AAA lists that were created earlier.*

```
crypto map clientmap client authentication list userauthen
crypto map clientmap isakmp authorization list groupauthor
crypto map clientmap client configuration address respond
crypto map clientmap 10 ipsec-isakmp dynamic dynmap
```

!
!
fax interface-type fax-mail
mta receive maximum-recipients 0
!
!
!

!--- Apply the crypto map on the outside interface.

```
interface Ethernet0/0
ip address 10.1.1.1 255.255.255.0

half-duplex

crypto map clientmap

!
interface Serial0/0
no ip address
shutdown
!
interface Ethernet0/1
ip address 172.18.124.159 255.255.255.0
no keepalive
half-duplex
!
```

!--- Create a pool of addresses to be assigned to the VPN Clients.

```
ip local pool ippool 10.16.20.1 10.16.20.200
```

```
ip classless  
ip route 0.0.0.0 0.0.0.0 10.1.1.2  
ip http server  
ip pim bidir-enable  
!
```

!--- Create an access control list (ACL) if you want to do split tunneling.

!--- This ACL is referenced in the RADIUS profile.

```
access-list 108 permit ip 172.18.124.0 0.0.255.255 10.16.20.0 0.0.0.255
```

```
!
```

!--- Specify the IP address of the RADIUS server,

!--- along with the RADIUS shared secret key.

```
radius-server host 172.18.124.96 auth-port 1645 acct-port 1646 key cisco123
```

```
radius-server retransmit 3  
call rsvp-sync
```

```
!
```

```
!
```

```
mgcp profile default
```

```
!
```

```
dial-peer cor custom
```

```
!
```

```
!
```

```
!
```

```
!
```

```
line con 0  
  exec-timeout 0 0
```

```
line aux 0
```

```
line vty 0 4
```

```
!
```

```
!
```

```
end
```

```
vpn2611#
```

RADIUS-serverconfiguratie

De RADIUS-server voor AAA-clients (router) configureren

Voer de volgende stappen uit:

1. Klik op Add Entry om de router aan de RADIUS-serverdatabase toe te voegen.

AAA Client Hostname	AAA Client IP Address	Authenticate Using
340	172.18.124.151	RADIUS (Cisco Aironet)
Aironet-340-Lab	14.36.1.99	RADIUS (Cisco Aironet)
glennitest	172.18.124.120	RADIUS (Cisco IOS/PIX)
router	172.18.124.150	TACACS+ (Cisco IOS)

2. Specificeer het IP-adres van de router "172.18.124.159" samen met de gedeelde geheime sleutel "cisco123" en kies RADIUS in het vervolgkeuzevenster Verifiëren met.

De RADIUS-server voor groepsverificatie en -autorisatie configureren

Voer de volgende stappen uit:


1. Klik op Add/Edit om een gebruiker met de naam 3000client aan de RADIUS-server toe te voegen.

2. Voorafgaand aan Cisco IOS-software release 15.8.3 en Cisco IOS XE-software release

16.9.1, was dit wachtwoord een speciaal trefwoord voor Cisco IOS, dat aangeeft dat er naar een groepsprofiel moet worden verwezen. U kunt de gebruiker aan een groep van Cisco Secure toewijzen als u dit wenst. Zorg ervoor dat er geen IP-adrestoewijzing is gekozen.

Na Cisco IOS-software release 15.8.3 en Cisco IOS XE-software release 16.9.1 heeft AAA-autorisatie een wachtwoord nodig en is deze verplicht. Het wordt aanbevolen het wachtwoord te definiëren dat wordt gebruikt via de opdracht Wachtwoord voor toegangsrechten `aaa_list1 wachtwoord <geheim>`.

De beheerder zou dan het wachtwoord van `<secret>` op de RADIUS-server configureren.



User Setup

User Setup ?

Password Authentication:

CiscoSecure Database

CiscoSecure PAP (Also used for CHAP/MS-CHAP/ARAP, if the Separate field is not checked.)

Password
 Confirm Password
 Separate (CHAP/MS-CHAP/ARAP)
 Password
 Confirm Password

When using a Token Card server for authentication, supplying a separate CHAP password for a token card user allows CHAP authentication. This is especially useful when token caching is enabled.

Group to which the user is assigned:

Group 20

Callback

Use group setting
 No callback allowed
 Callback using this number
 Dialup client specifies callback number
 Use Microsoft NT callback settings

Client IP Address Assignment

Use group settings
 No IP address assignment
 Assigned by dialup client
 Assign static IP address
 Assigned by AAA client pool

3. Specificeer de parameters voor groepsautorisatie die door deze gebruikersaccount worden doorgegeven aan de VPN-client.

Zorg ervoor dat cisco-av-paar is ingeschakeld met deze kenmerken:

- ipsec:key-exchange=ike

- ipsec:key-exchange=preshared-key
- ipsec:addr-pool=ippool
- ipsec:inac1=108 (alleen nodig als u gesplitste tunneling op de router gebruikt)

Zorg er ook voor dat de IETF RADIUS-kenmerken zijn ingeschakeld:

- Attribuut 6: Service-Type=Outbound
- Attribuut 64: Tunnel-Type=IP ESP
- Attribuut 69: Tunnel-Password=cisco123 (dit is uw groepswachtwoord op de VPN-client)

Klik op Indienen als u klaar bent.

Checking this option will PERMIT all UNKNOWN Services

Default (Undefined) Services

Cisco IOS/PIX RADIUS Attributes ?

[009\001] cisco-av-pair

```
ipsec:key-exchange=ike
ipsec:key-exchange=preshared-key
ipsec:addr-pool=ippool
ipsec:inac1=100
```

IETF RADIUS Attributes ?

[006] Service-Type Outbound

[007] Framed-Protocol PPP

[027] Session-Timeout 0

[028] Idle-Timeout 0

[064] Tunnel-Type

Tag 1 Value IP ESP

Tag 2 Value

[069] Tunnel-Password

Tag 1 Value cisco123

Tag 2 Value

Onder leveranciersspecifieke kenmerken kunt u deze optionele kenmerken ook inschakelen:


- ipsec:standaard-domein=
- ipsec:timeout=
- ipsec:idletime=
- ipsec:dns-servers=
- ipsec:wins-servers=

De RADIUS-server voor gebruikersverificatie configureren

Voer de volgende stappen uit:

1. Klik op Add/Edit om de VPN-gebruiker toe te voegen in de Cisco Secure-database.

In dit voorbeeld is de gebruikersnaam cisco.



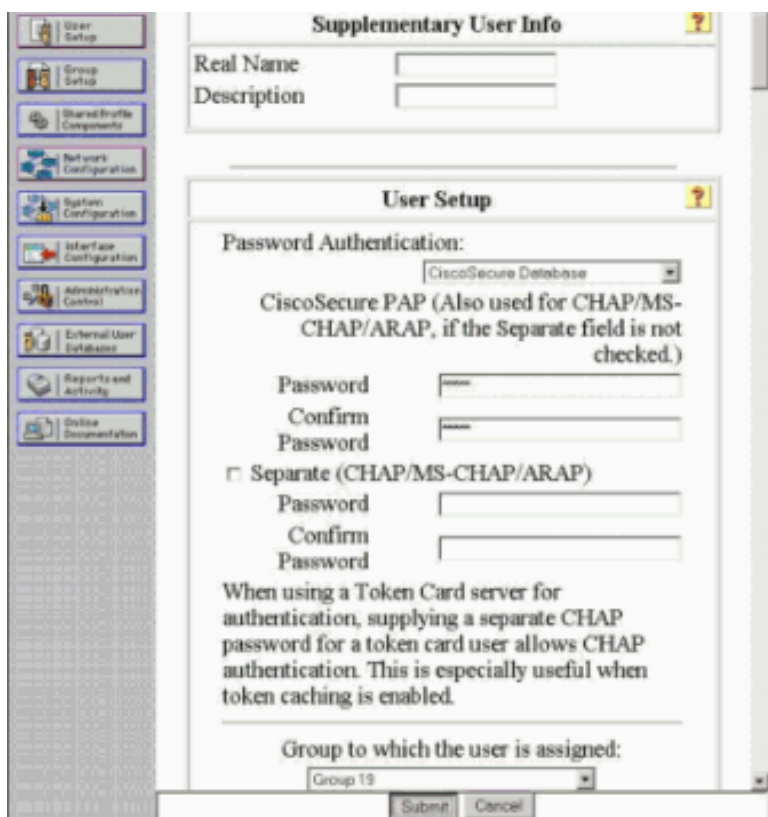
The screenshot shows the 'User Setup' page in the Cisco Secure GUI. The 'User' field contains 'cisco'. Below it, a list of users beginning with 'c' is displayed, including 'cisco', 'cisco1', 'cisco2', etc. The 'Add/Edit' button is visible.

- [User Setup and External User Databases](#)
- [Finding a Specific User in the CiscoSecure User Database](#)
- [Adding a User to the CiscoSecure User Database](#)
- [Listing Usernames that Begin with a Particular Character](#)
- [Listing All Usernames in the CiscoSecure User Database](#)
- [Changing a Username in the CiscoSecure User Database](#)

User Setup enables you to configure individual user information, add users, and delete users in the database.

2. Specificeer in het volgende venster het wachtwoord voor de gebruiker cisco. Het wachtwoord is ook Cisco.

U kunt de gebruikersaccount aan een groep toewijzen. Klik op Indienen als u klaar bent.



The screenshot shows the 'User Setup' page in the Cisco Secure GUI. The 'Supplementary User Info' section includes fields for 'Real Name' and 'Description'. The 'User Setup' section includes 'Password Authentication' options, a 'Password' field, and a 'Group to which the user is assigned' dropdown menu set to 'Group 19'. The 'Submit' and 'Cancel' buttons are visible.

- [Account Disabled](#)
- [Deleting a Username](#)
- [Supplementary User Info](#)
- [Password Authentication](#)
- [Group to which the user is assigned](#)
- [Callback](#)
- [Client IP Address Assignment](#)
- [Advanced Settings](#)
- [Network Access Restrictions](#)
- [Max Sessions](#)
- [Usage Quotas](#)
- [Account Disable](#)
- [Downloadable ACLs](#)
- [Advanced TACACS+ Settings](#)
- [TACACS+ Enable Control](#)
- [TACACS+ Enable Password](#)
- [TACACS+ Outbound Password](#)
- [TACACS+ Shell Command Authorization](#)
- [TACACS+ Unknown Services](#)
- [IETF RADIUS Attributes](#)
- [RADIUS Vendor-Specific Attributes](#)

Account Disabled Status

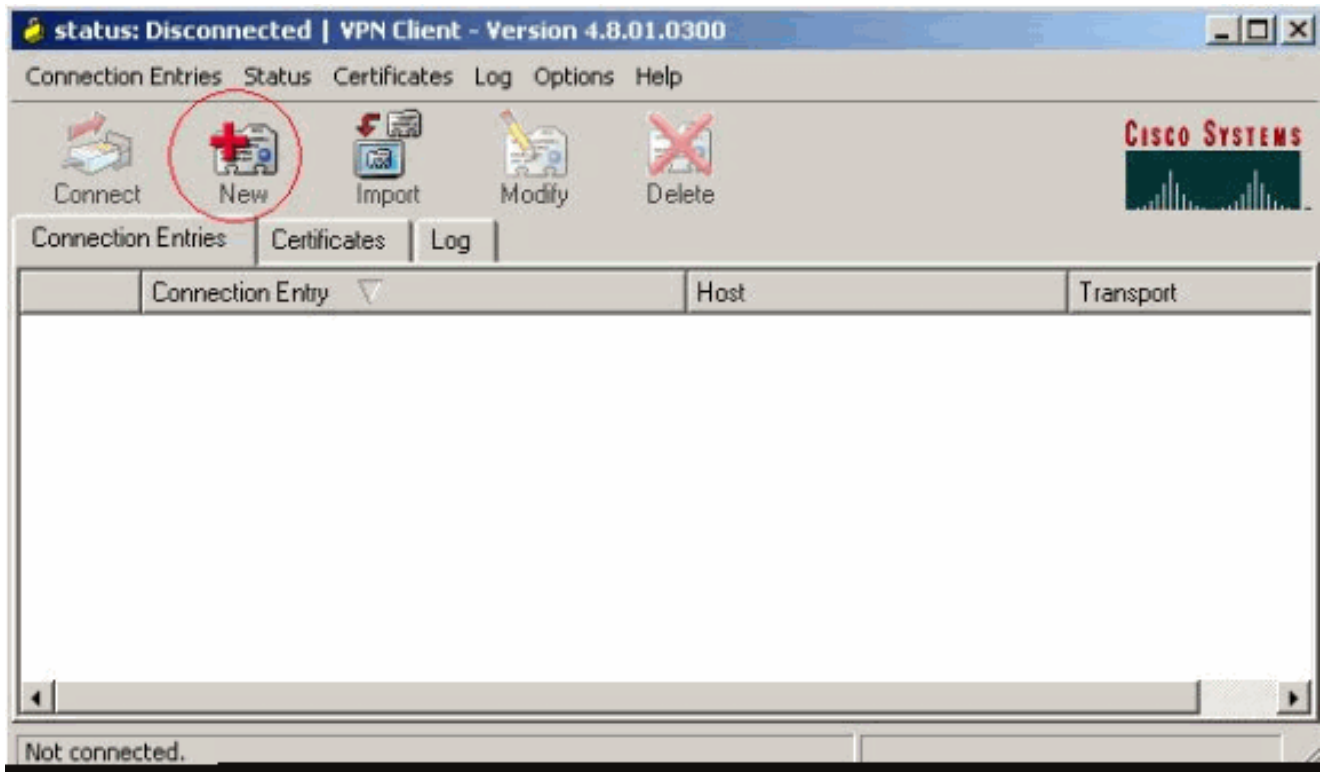
Select the Account Disabled check box to disable this account; clear the check box to enable the account.

[\[Back to Top\]](#)

Configuratie van VPN-client 4.8

Voltooi de volgende stappen om de VPN-client 4.8 te configureren:

1. Kies Start > Programma's > Cisco Systems VPN-client > VPN-client.
2. Klik op Nieuw om het venster Nieuwe VPN-verbinding maken te starten.



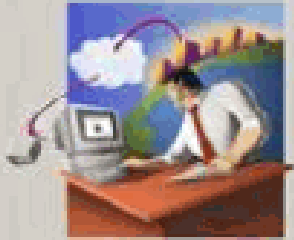
3. Voer de naam van de Connection Entry samen met een beschrijving in. Voer het buitenste IP-adres van de router in het veld Host in. Typ vervolgens de naam en het wachtwoord van de VPN-groep en klik op Opslaan.

VPN Client | Properties for "vpn"

Connection Entry:

Description:

Host:



Authentication | Transport | Backup Servers | Dial-Up

Group Authentication Mutual Group Authentication

Name:

Password:

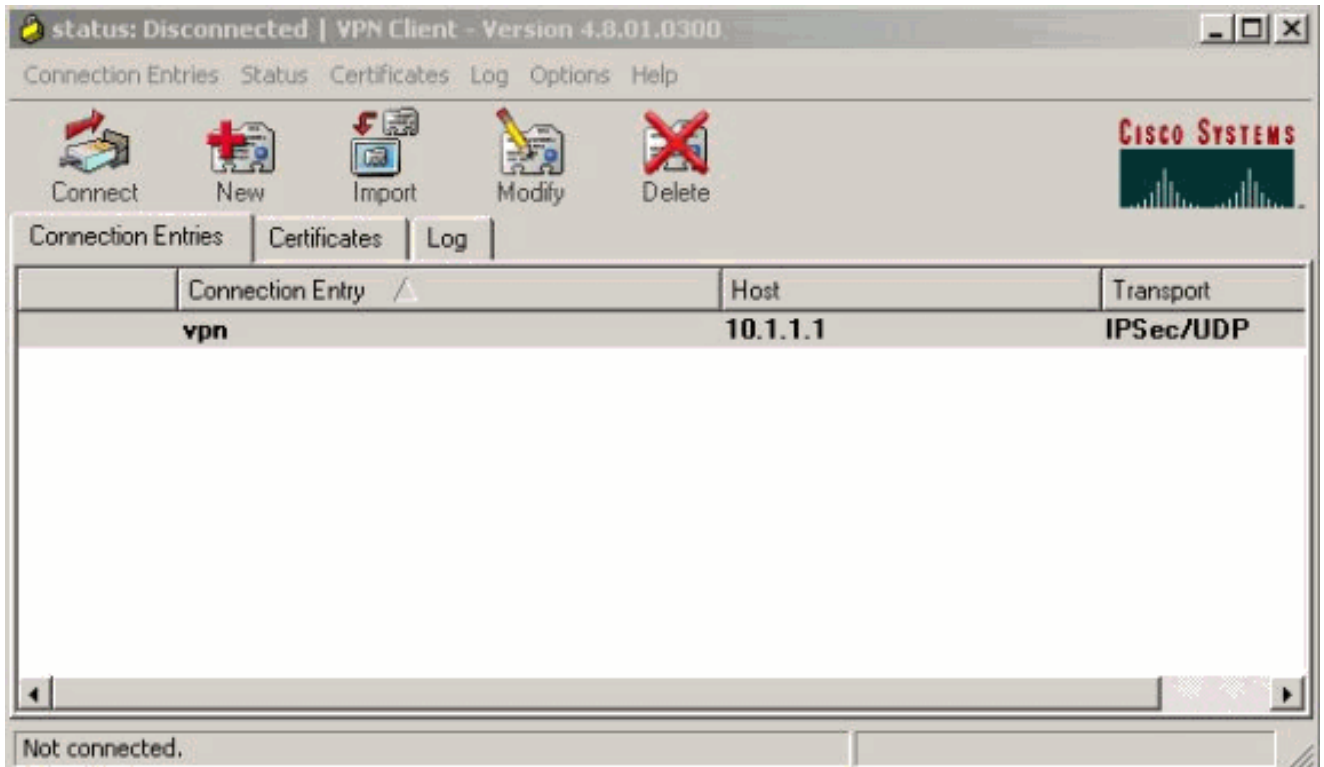
Confirm Password:

Certificate Authentication

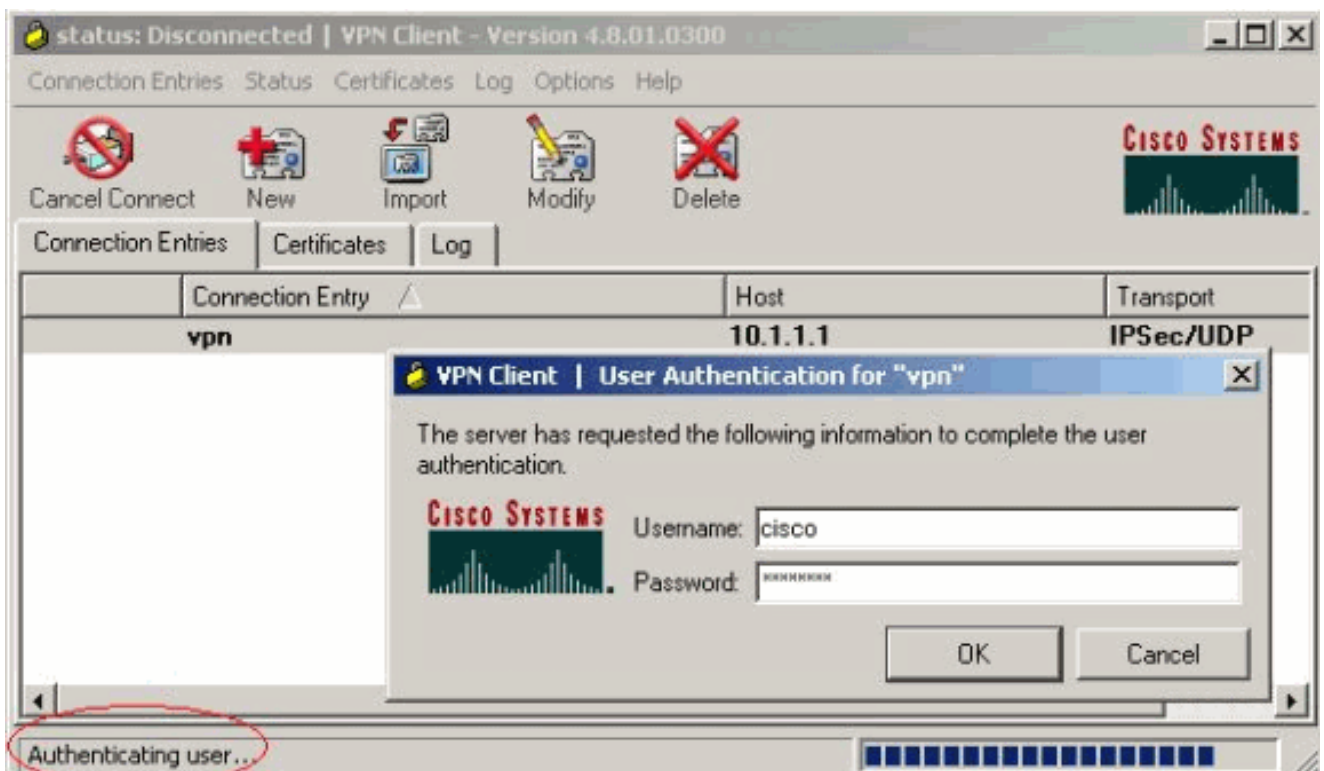
Name:

Send CA Certificate Chain

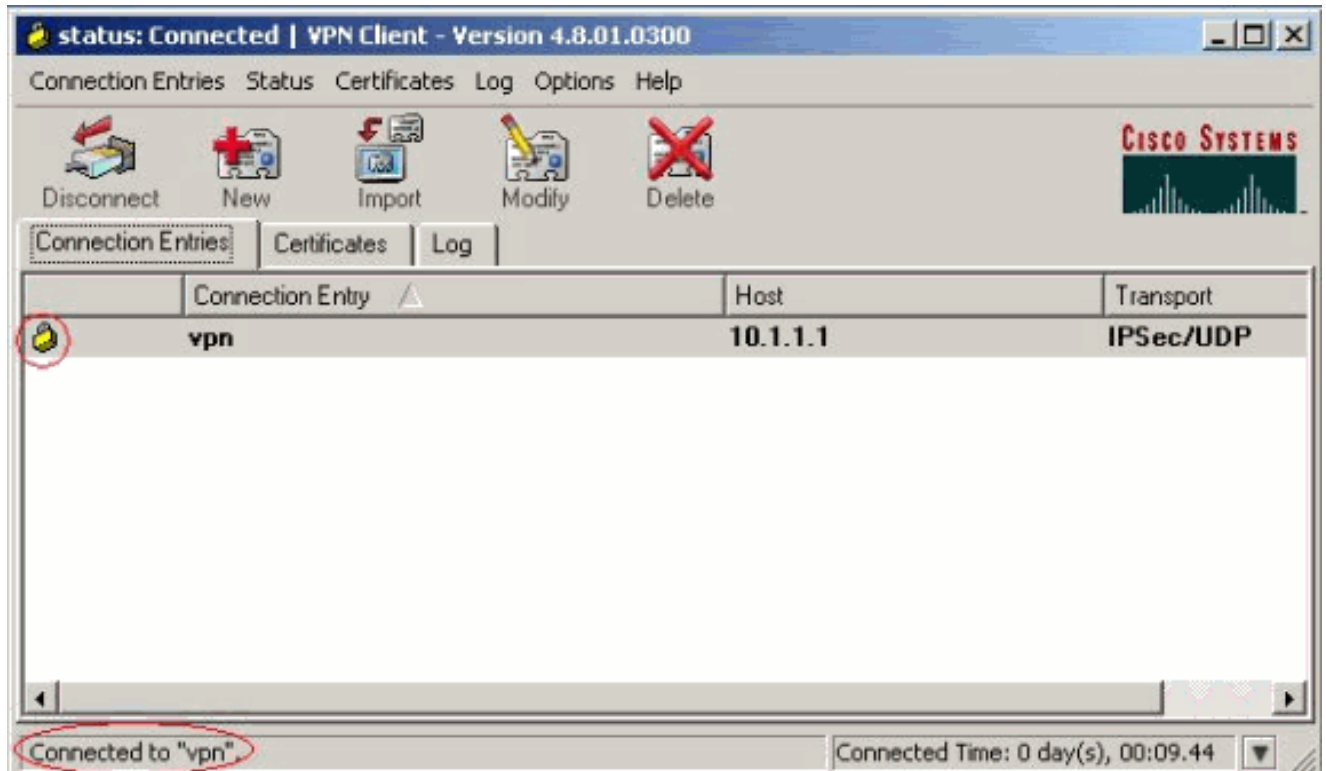
4. Klik op de verbinding die u wilt gebruiken en klik op Verbinden vanuit het hoofdvenster van de VPN-client.



- Voer wanneer hierom wordt gevraagd de gebruikersnaam en het wachtwoord in voor xauth en klik op OK om verbinding te maken met het externe netwerk.



De VPN-client wordt verbonden met de router op de centrale locatie.



Verifiëren

Gebruik deze sectie om te controleren of uw configuratie goed werkt.

```
<#root>
```

```
vpn2611#
```

```
show crypto isakmp sa
```

```
dst          src          state          conn-id    slot
10.1.1.1    10.0.0.1
QM_IDLE
          3          0
```

```
vpn2611#
```

```
show crypto ipsec sa interface: Ethernet0/0
```

```
    Crypto map tag: clientmap,
```

```
local addr. 10.1.1.1
```

```
    local ident (addr/mask/prot/port): (10.1.1.1/255.255.255.255/0/0)
    remote ident (addr/mask/prot/port): (10.16.20.2/255.255.255.255/0/0)
```

```
current_peer: 10.0.0.1
```

```
    PERMIT, flags={}
```

```
#pkts encaps: 5, #pkts encrypt: 5, #pkts digest 5
```


#pkts decaps: 5, #pkts decrypt: 5, #pkts verify 5

#pkts compressed: 0, #pkts decompressed: 0

#pkts not compressed: 0, #pkts compr. failed: 0, #pkts decompress failed: 0

#send errors 0, #recv errors 0

local crypto endpt.: 10.1.1.1, remote crypto endpt.: 10.0.0.1

path mtu 1500, media mtu 1500

current outbound spi: 77AFCCFA

inbound esp sas:

spi: 0xC7AC22AB(3349947051)

transform: esp-3des esp-sha-hmac ,

in use settings ={Tunnel, }

slot: 0, conn id: 2000, flow_id: 1, crypto map: clientmap

sa timing: remaining key lifetime (k/sec): (4608000/3444)

IV size: 8 bytes

replay detection support: Y

inbound ah sas:

inbound pcp sas:

outbound esp sas:

spi: 0x77AFCCFA(2008009978)

transform: esp-3des esp-sha-hmac ,

in use settings ={Tunnel, }

slot: 0, conn id: 2001, flow_id: 2, crypto map: clientmap

sa timing: remaining key lifetime (k/sec): (4608000/3444)

IV size: 8 bytes

replay detection support: Y

outbound ah sas:

outbound pcp sas:

local ident (addr/mask/prot/port): (172.18.124.0/255.255.255.0/0/0)

remote ident (addr/mask/prot/port): (10.16.20.2/255.255.255.255/0/0)

current_peer: 10.0.0.1

PERMIT, flags={}

#pkts encaps: 4, #pkts encrypt: 4, #pkts digest 4

#pkts decaps: 6, #pkts decrypt: 6, #pkts verify 6

#pkts compressed: 0, #pkts decompressed: 0

#pkts not compressed: 0, #pkts compr. failed: 0, #pkts decompress failed: 0

#send errors 0, #recv errors 0

local crypto endpt.: 10.1.1.1, remote crypto endpt.: 10.0.0.1

path mtu 1500, media mtu 1500

current outbound spi: 2EE5BF09

inbound esp sas:

spi: 0x3565451F(895829279)

transform: esp-3des esp-sha-hmac ,

in use settings ={Tunnel, }

slot: 0, conn id: 2002, flow_id: 3, crypto map: clientmap

sa timing: remaining key lifetime (k/sec): (4607999/3469)

IV size: 8 bytes

replay detection support: Y

inbound ah sas:

inbound pcp sas:

outbound esp sas:

```
spi: 0x2EE5BF09(786808585)
transform: esp-3des esp-sha-hmac ,
in use settings ={Tunnel, }
slot: 0, conn id: 2003, flow_id: 4, crypto map: clientmap
sa timing: remaining key lifetime (k/sec): (4607999/3469)
IV size: 8 bytes
replay detection support: Y
```

outbound ah sas:

outbound pcp sas:

vpn2611#

show crypto engine connections active

ID	Interface	IP-Address	State	Algorithm	Encrypt	Decrypt
3	Ethernet0/0	10.1.1.1	set	HMAC_SHA+3DES_56_C	0	0
2000	Ethernet0/0	10.1.1.1	set	HMAC_SHA+3DES_56_C	0	5
2001	Ethernet0/0	10.1.1.1	set	HMAC_SHA+3DES_56_C	5	0
2002	Ethernet0/0	10.1.1.1	set	HMAC_SHA+3DES_56_C	0	6
2003	Ethernet0/0	10.1.1.1	set	HMAC_SHA+3DES_56_C	4	0

Problemen oplossen

Deze sectie bevat informatie om uw configuratie te troubleshooten.

Opdrachten voor troubleshooting

Raadpleeg [Important Information on Debug Commands \(Belangrijke informatie over opdrachten met debug\) voordat u opdrachten met debug opgeeft.](#)

- debug crypto ipsec-displays debug informatie over IPSec-verbindingen.
- debug crypto isakmp-displays debug informatie over IPSec-verbindingen en toont de eerste set attributen die worden ontkend vanwege incompatibiliteit aan beide uiteinden.
- debug crypto engine—Hier wordt informatie weergegeven uit de crypto engine.
- debug aaa verificatie—Hier wordt informatie over AAA/TACACS+ verificatie weergegeven.
- debug aaa-autorisatiereductie—Hier wordt informatie weergegeven over AAA/TACACS+ autorisatie.
- debug radius—Hier wordt informatie weergegeven over probleemoplossing en communicatie tussen de RADIUS-server en de router.

Debug uitvoer

Deze sectie verstrekt zuiveren informatie van de router die u kunt gebruiken om uw configuratie

problemen op te lossen.

Routerlogboeken

```
<#root>
```

```
vpn2611#
```

```
show debug
```

```
General OS:
```

```
AAA Authorization debugging is on  
Radius protocol debugging is on  
Radius packet protocol debugging is on
```

```
Cryptographic Subsystem:
```

```
Crypto ISAKMP debugging is on  
Crypto IPSEC debugging is on
```

```
vpn2611#
```

```
1w0d: ISAKMP (0:0): received packet from 10.0.0.1 (N) NEW SA
```

```
1w0d: ISAKMP: local port 500, remote port 500
```

```
1w0d: ISAKMP (0:2): (Re)Setting client xauth list userauthen and state
```

```
1w0d: ISAKMP: Locking CONFIG struct 0x830BF118 from
```

```
crypto_ikmp_config_initialize_sa, count 2
```

```
1w0d: ISAKMP (0:2): processing SA payload. message ID = 0
```

```
1w0d: ISAKMP (0:2): processing ID payload. message ID = 0
```

```
1w0d: ISAKMP (0:2): processing vendor id payload
```

```
1w0d: ISAKMP (0:2): vendor ID seems Unity/DPD but bad major
```

```
1w0d: ISAKMP (0:2): vendor ID is XAUTH
```

```
1w0d: ISAKMP (0:2): processing vendor id payload
```

```
1w0d: ISAKMP (0:2): vendor ID is DPD
```

```
1w0d: ISAKMP (0:2): processing vendor id payload
```

```
1w0d: ISAKMP (0:2): vendor ID is Unity
```

```
1w0d: ISAKMP (0:2): Checking ISAKMP transform 1 against priority 3 policy
```

```
1w0d: ISAKMP: encryption 3DES-CBC
```

```
1w0d: ISAKMP: hash SHA
```

```
1w0d: ISAKMP: default group 2
```

```
1w0d: ISAKMP: auth XAUTHInitPreShared
```

```
1w0d: ISAKMP: life type in seconds
```

```
1w0d: ISAKMP: life duration (VPI) of 0x0 0x20 0xC4 0x9B
```

```
1w0d: ISAKMP (0:2): atts are acceptable. Next payload is 3
```

```
1w0d: ISAKMP (0:2): processing KE payload. message ID = 0
```

```
1w0d: ISAKMP (0:2): processing NONCE payload. message ID = 0
```

```
1w0d: ISAKMP (0:2): processing vendor id payload
```

```
1w0d: ISAKMP (0:2): processing vendor id payload
```

```
1w0d: ISAKMP (0:2): processing vendor id payload
```

```
1w0d: AAA: parse name=ISAKMP-ID-AUTH idb type=-1 tty=-1
```

```
1w0d: AAA/MEMORY: create_user (0x830CAF28) user='3000client' ruser='NULL'
```

```
ds0=0 port='ISAKMP-ID-AUTH' rem_addr='10.0.0.1' authen_type=NONE
```

```
service=LOGIN priv=0 initial_task_id='0'
```

```
1w0d: ISAKMP (0:2): Input = IKE_MESG_FROM_PEER, IKE_AM_EXCH
```

```
Old State = IKE_READY New State = IKE_R_AM_AAA_AWAIT
```

```
1w0d: ISAKMP-ID-AUTH AAA/AUTHOR/CRYPTO AAA(66832552):
```

Port='ISAKMP-ID-AUTH' list='groupauthor' service=NET
1w0d: AAA/AUTHOR/CRYPTO AAA: ISAKMP-ID-AUTH(66832552) user='3000client'
1w0d: ISAKMP-ID-AUTH AAA/AUTHOR/CRYPTO AAA(66832552): send AV service=ike
1w0d: ISAKMP-ID-AUTH AAA/AUTHOR/CRYPTO AAA(66832552): send AV
protocol=ipsec

1w0d: ISAKMP-ID-AUTH AAA/AUTHOR/CRYPTO AAA(66832552): found list
"groupauthor"
1w0d: ISAKMP-ID-AUTH AAA/AUTHOR/CRYPTO AAA(66832552): Method=radius

(radius)

1w0d: RADIUS: authenticating to get author data
1w0d: RADIUS: ustruct sharecount=3
1w0d: Radius: radius_port_info() success=0 radius_nas_port=1
1w0d: RADIUS: Send to ISAKMP-ID-AUTH id 60 172.18.124.96:1645,
Access-Request, len 83

1w0d: RADIUS: authenticator AF EC D3 AD D6 39 4F 7D - A0 5E FC 64 F5 DE
A7 3B
1w0d: RADIUS: NAS-IP-Address [4] 6 172.18.124.159
1w0d: RADIUS: NAS-Port-Type [61] 6 Async [0]

1w0d: RADIUS: User-Name [1] 12 "3000client"

1w0d: RADIUS: Calling-Station-Id [31] 15 "10.0.0.1"
1w0d: RADIUS: User-Password [2] 18 *
1w0d: RADIUS: Service-Type [6] 6 Outbound [5]

1w0d: RADIUS: Received from id 60 172.18.124.96:1645, Access-Accept, len
176

1w0d: RADIUS: authenticator 52 BA 0A 38 AC C2 2B 6F - A0 77 64 93 D6 19
78 CF
1w0d: RADIUS: Service-Type [6] 6 Outbound [5]
1w0d: RADIUS: Vendor, Cisco [26] 30
1w0d: RADIUS: Cisco AVpair [1] 24 "ipsec:key-exchange=ike"
1w0d: RADIUS: Vendor, Cisco [26] 40
1w0d: RADIUS: Cisco AVpair [1] 34 "ipsec:key-exchange=preshared-key"
1w0d: RADIUS: Vendor, Cisco [26] 30
1w0d: RADIUS: Cisco AVpair [1] 24 "ipsec:addr-pool=ippool"
1w0d: RADIUS: Vendor, Cisco [26] 23
1w0d: RADIUS: Cisco AVpair [1] 17 "ipsec:inac1=108"
1w0d: RADIUS: Tunnel-Type [64] 6 01:ESP [9]
1w0d: RADIUS: Tunnel-Password [69] 21 *
1w0d: RADIUS: saved authorization data for user 830CAF28 at 83198648

1w0d: RADIUS: cisco AVPair "ipsec:key-exchange=ike"
1w0d: RADIUS: cisco AVPair "ipsec:key-exchange=preshared-key"
1w0d: RADIUS: cisco AVPair "ipsec:addr-pool=ippool"
1w0d: RADIUS: cisco AVPair "ipsec:inac1=108"
1w0d: RADIUS: Tunnel-Type, [01] 00 00 09
1w0d: RADIUS: TAS(1) created and enqueued.
1w0d: RADIUS: Tunnel-Password decrypted, [01] cisco123

1w0d: RADIUS: TAS(1) takes precedence over tagged attributes,
tunnel_type=esp
1w0d: RADIUS: free TAS(1)
1w0d: AAA/AUTHOR (66832552): Post authorization status = PASS_REPL
1w0d: ISAKMP: got callback 1
AAA/AUTHOR/IKE: Processing AV key-exchange=ike
AAA/AUTHOR/IKE: Processing AV key-exchange=preshared-key
AAA/AUTHOR/IKE: Processing AV addr-pool=ippool
AAA/AUTHOR/IKE: Processing AV inac1=108
AAA/AUTHOR/IKE: Processing AV tunnel-type*esp

```
AAA/AUTHOR/IKE: Processing AV tunnel-password=cisco123
AAA/AUTHOR/IKE: Processing AV tunnel-tag*1
1w0d: ISAKMP (0:2): SKEYID state generated
1w0d: ISAKMP (0:2): SA is doing pre-shared key authentication plus XAUTH
using id type ID_IPV4_ADDR
1w0d: ISAKMP (2): ID payload
next-payload : 10
type : 1
protocol : 17
port : 500
length : 8
1w0d: ISAKMP (2): Total payload length: 12
1w0d: ISAKMP (0:2): sending packet to 10.0.0.1 (R) AG_INIT_EXCH
1w0d: ISAKMP (0:2): Input = IKE_MESG_FROM_AAA, PRESHARED_KEY_REPLY
Old State = IKE_R_AM_AAA_AWAIT New State = IKE_R_AM2

1w0d: AAA/MEMORY: free_user (0x830CAF28) user='3000client' ruser='NULL'
port='ISAKMP-ID-AUTH' rem_addr='10.0.0.1' authen_type=NONE
service=LOGIN priv=0
1w0d: ISAKMP (0:2): received packet from 10.0.0.1 (R) AG_INIT_EXCH
1w0d: ISAKMP (0:2): processing HASH payload. message ID = 0
1w0d: ISAKMP (0:2): processing NOTIFY INITIAL_CONTACT protocol 1
spi 0, message ID = 0, sa = 831938B0
1w0d: ISAKMP (0:2): Process initial contact, bring down existing phase 1
and 2 SA's
1w0d: ISAKMP (0:2): returning IP addr to the address pool: 10.16.20.1
1w0d: ISAKMP (0:2): returning address 10.16.20.1 to pool
1w0d: ISAKMP (0:2): peer does not do paranoid keepalives.

1w0d: ISAKMP (0:2): SA has been authenticated with 10.0.0.1
1w0d: ISAKMP (0:2): sending packet to 10.0.0.1 (R) QM_IDLE
1w0d: ISAKMP (0:2): purging node -1377537628
1w0d: ISAKMP: Sending phase 1 responder lifetime 86400

1w0d: ISAKMP (0:2): Input = IKE_MESG_FROM_PEER, IKE_AM_EXCH
Old State = IKE_R_AM2 New State = IKE_P1_COMPLETE

1w0d: IPSEC(key_engine): got a queue event...
1w0d: IPSEC(key_engine_delete_sas): rec'd delete notify from ISAKMP
1w0d: IPSEC(key_engine_delete_sas): delete all SAs shared with
10.0.0.1
1w0d: ISAKMP (0:2): Need XAUTH
1w0d: AAA: parse name=ISAKMP idb type=-1 tty=-1
1w0d: AAA/MEMORY: create_user (0x830CAF28) user='NULL' ruser='NULL' ds0=0
port='ISAKMP' rem_addr='10.0.0.1' authen_type=ASCII service=LOGIN
priv=0 initial_task_id='0'
1w0d: ISAKMP (0:2): Input = IKE_MESG_INTERNAL, IKE_PHASE1_COMPLETE
Old State = IKE_P1_COMPLETE New State = IKE_XAUTH_AAA_START_LOGIN_AWAIT

1w0d: ISAKMP: got callback 1
1w0d: ISAKMP/xauth: request attribute XAUTH_TYPE_V2
1w0d: ISAKMP/xauth: request attribute XAUTH_MESSAGE_V2
1w0d: ISAKMP/xauth: request attribute XAUTH_USER_NAME_V2
1w0d: ISAKMP/xauth: request attribute XAUTH_USER_PASSWORD_V2
1w0d: ISAKMP (0:2): initiating peer config to 10.0.0.1. ID =
-1021889193
1w0d: ISAKMP (0:2): sending packet to 10.0.0.1 (R) CONF_XAUTH
1w0d: ISAKMP (0:2): Input = IKE_MESG_FROM_AAA, IKE_AAA_START_LOGIN
Old State = IKE_XAUTH_AAA_START_LOGIN_AWAIT New State =
IKE_XAUTH_REQ_SENT

1w0d: ISAKMP (0:1): purging node 832238598
```

1w0d: ISAKMP (0:1): purging node 1913225491
1w0d: ISAKMP (0:2): received packet from 10.0.0.1 (R) CONF_XAUTH
1w0d: ISAKMP (0:2): processing transaction payload from 10.0.0.1.
message ID = -1021889193
1w0d: ISAKMP: Config payload REPLY
1w0d: ISAKMP/xauth: reply attribute XAUTH_TYPE_V2 unexpected
1w0d: ISAKMP/xauth: reply attribute XAUTH_USER_NAME_V2
1w0d: ISAKMP/xauth: reply attribute XAUTH_USER_PASSWORD_V2
1w0d: ISAKMP (0:2): deleting node -1021889193 error FALSE reason "done
with xauth request/reply exchange"
1w0d: ISAKMP (0:2): Input = IKE_MESG_FROM_PEER, IKE_CFG_REPLY
Old State = IKE_XAUTH_REQ_SENT New State = IKE_XAUTH_AAA_CONT_LOGIN_AWAIT

1w0d: RADIUS: ustruct sharecount=2
1w0d: Radius: radius_port_info() success=0 radius_nas_port=1

1w0d: RADIUS: Send to ISAKMP id 61 172.18.124.96:1645, Access-Request, len 72

1w0d: RADIUS: authenticator 98 12 4F C0 DA B9 48 B8 - 58 00 BA 14 08 8E
87 C0
1w0d: RADIUS: NAS-IP-Address [4] 6 172.18.124.159
1w0d: RADIUS: NAS-Port-Type [61] 6 Async [0]

1w0d: RADIUS: User-Name [1] 7 "cisco"

1w0d: RADIUS: Calling-Station-Id [31] 15 "10.0.0.1"
1w0d: RADIUS: User-Password [2] 18 *

1w0d: RADIUS: Received from id 61 172.18.124.96:1645, Access-Accept, len 26

1w0d: RADIUS: authenticator 00 03 F4 E1 9C 61 3F 03 - 54 83 E8 27 5C 6A
7B 6E
1w0d: RADIUS: Framed-IP-Address [8] 6 255.255.255.255
1w0d: RADIUS: saved authorization data for user 830CAF28 at 830F89F8
1w0d: ISAKMP: got callback 1
1w0d: ISAKMP (0:2): initiating peer config to 10.0.0.1. ID =
-547189328
1w0d: ISAKMP (0:2): sending packet to 10.0.0.1 (R) CONF_XAUTH
1w0d: ISAKMP (0:2): Input = IKE_MESG_FROM_AAA, IKE_AAA_CONT_LOGIN
Old State = IKE_XAUTH_AAA_CONT_LOGIN_AWAIT New State = IKE_XAUTH_SET_SENT

1w0d: AAA/MEMORY: free_user (0x830CAF28) user='cisco' ruser='NULL'
port='ISAKMP' rem_addr='10.0.0.1' authen_type=ASCII service=LOGIN
priv=0
1w0d: ISAKMP (0:2): received packet from 10.0.0.1 (R) CONF_XAUTH
1w0d: ISAKMP (0:2): processing transaction payload from 10.0.0.1.
message ID = -547189328
1w0d: ISAKMP: Config payload ACK
1w0d: ISAKMP (0:2): XAUTH ACK Processed
1w0d: ISAKMP (0:2): deleting node -547189328 error FALSE reason "done with
transaction"
1w0d: ISAKMP (0:2): Input = IKE_MESG_FROM_PEER, IKE_CFG_ACK
Old State = IKE_XAUTH_SET_SENT New State = IKE_P1_COMPLETE

1w0d: ISAKMP (0:2): Input = IKE_MESG_INTERNAL, IKE_PHASE1_COMPLETE
Old State = IKE_P1_COMPLETE New State = IKE_P1_COMPLETE

1w0d: ISAKMP (0:2): received packet from 10.0.0.1 (R) QM_IDLE
1w0d: ISAKMP (0:2): processing transaction payload from 10.0.0.1.
message ID = -1911189201
1w0d: ISAKMP: Config payload REQUEST
1w0d: ISAKMP (0:2): checking request:
1w0d: ISAKMP: IP4_ADDRESS
1w0d: ISAKMP: IP4_NETMASK

```
1w0d: ISAKMP: IP4_DNS
1w0d: ISAKMP: IP4_NBNS
1w0d: ISAKMP: ADDRESS_EXPIRY
1w0d: ISAKMP: APPLICATION_VERSION
1w0d: ISAKMP: UNKNOWN Unknown Attr: 0x7000
1w0d: ISAKMP: UNKNOWN Unknown Attr: 0x7001
1w0d: ISAKMP: DEFAULT_DOMAIN
1w0d: ISAKMP: SPLIT_INCLUDE
1w0d: ISAKMP: UNKNOWN Unknown Attr: 0x7007
1w0d: ISAKMP: UNKNOWN Unknown Attr: 0x7008
1w0d: ISAKMP: UNKNOWN Unknown Attr: 0x7005
1w0d: AAA: parse name=ISAKMP-GROUP-AUTH idb type=-1 tty=-1
1w0d: AAA/MEMORY: create_user (0x830CAF28) user='3000client' ruser='NULL'
ds0=0 port='ISAKMP-GROUP-AUTH' rem_addr='10.0.0.1' authen_type=NONE
service=LOGIN priv=0 initial_task_id='0'
1w0d: ISAKMP (0:2): Input = IKE_MSG_FROM_PEER, IKE_CFG_REQUEST
0ld State = IKE_P1_COMPLETE New State = IKE_CONFIG_AUTHOR_AAA_AWAIT

1w0d: ISAKMP-GROUP-AUTH AAA/AUTHOR/CRYPTO AAA(3098118746):
Port='ISAKMP-GROUP-AUTH' list='groupauthor' service=NET
1w0d: AAA/AUTHOR/CRYPTO AAA: ISAKMP-GROUP-AUTH(3098118746)
user='3000client'
1w0d: ISAKMP-GROUP-AUTH AAA/AUTHOR/CRYPTO AAA(3098118746): send AV
service=ike
1w0d: ISAKMP-GROUP-AUTH AAA/AUTHOR/CRYPTO AAA(3098118746): send AV
protocol=ipsec
1w0d: ISAKMP-GROUP-AUTH AAA/AUTHOR/CRYPTO AAA(3098118746): found list
"groupauthor"
1w0d: ISAKMP-GROUP-AUTH AAA/AUTHOR/CRYPTO AAA(3098118746): Method=radius
(radius)
1w0d: RADIUS: authenticating to get author data
1w0d: RADIUS: ustruct sharecount=3
1w0d: Radius: radius_port_info() success=0 radius_nas_port=1
1w0d: RADIUS: Send to ISAKMP-GROUP-AUTH id 62 172.18.124.96:1645,
Access-Request, len 83
1w0d: RADIUS: authenticator 32 C5 32 FF AB B7 E4 68 - 9A 68 5A DE D5 56
0C BE
1w0d: RADIUS: NAS-IP-Address [4] 6 172.18.124.159
1w0d: RADIUS: NAS-Port-Type [61] 6 Async [0]
1w0d: RADIUS: User-Name [1] 12 "3000client"
1w0d: RADIUS: Calling-Station-Id [31] 15 "10.0.0.1"
1w0d: RADIUS: User-Password [2] 18 *
1w0d: RADIUS: Service-Type [6] 6 Outbound [5]
1w0d: RADIUS: Received from id 62 172.18.124.96:1645, Access-Accept, len
176
1w0d: RADIUS: authenticator DF FA FE 21 07 92 4F 10 - 75 5E D6 96 66 70
19 27
1w0d: RADIUS: Service-Type [6] 6 Outbound [5]
1w0d: RADIUS: Vendor, Cisco [26] 30
1w0d: RADIUS: Cisco AVpair [1] 24 "ipsec:key-exchange=ike"
1w0d: RADIUS: Vendor, Cisco [26] 40
1w0d: RADIUS: Cisco AVpair [1] 34
"ipsec:key-exchange=preshared-key"
1w0d: RADIUS: Vendor, Cisco [26] 30
1w0d: RADIUS: Cisco AVpair [1] 24 "ipsec:addr-pool=ippool"
1w0d: RADIUS: Vendor, Cisco [26] 23
1w0d: RADIUS: Cisco AVpair [1] 17 "ipsec:inac1=108"
1w0d: RADIUS: Tunnel-Type [64] 6 01:ESP [9]
1w0d: RADIUS: Tunnel-Password [69] 21 *
1w0d: RADIUS: saved authorization data for user 830CAF28 at 83143E64
1w0d: RADIUS: cisco AVPair "ipsec:key-exchange=ike"
1w0d: RADIUS: cisco AVPair "ipsec:key-exchange=preshared-key"
```

```
1w0d: RADIUS: cisco AVPair "ipsec:addr-pool=ippool"
1w0d: RADIUS: cisco AVPair "ipsec:inac1=108"
1w0d: RADIUS: Tunnel-Type, [01] 00 00 09
1w0d: RADIUS: TAS(1) created and enqueued.
1w0d: RADIUS: Tunnel-Password decrypted, [01] cisco123
1w0d: RADIUS: TAS(1) takes precedence over tagged attributes,
tunnel_type=esp
1w0d: RADIUS: free TAS(1)
1w0d: AAA/AUTHOR (3098118746): Post authorization status = PASS_REPL
1w0d: ISAKMP: got callback 1
AAA/AUTHOR/IKE: Processing AV key-exchange=ike
AAA/AUTHOR/IKE: Processing AV key-exchange=preshared-key
AAA/AUTHOR/IKE: Processing AV addr-pool=ippool
AAA/AUTHOR/IKE: Processing AV inac1=108
AAA/AUTHOR/IKE: Processing AV tunnel-type*esp
AAA/AUTHOR/IKE: Processing AV tunnel-password=cisco123
AAA/AUTHOR/IKE: Processing AV tunnel-tag*1
1w0d: ISAKMP (0:2): attributes sent in message:
1w0d: Address: 0.2.0.0
1w0d: ISAKMP (0:2): allocating address 10.16.20.2
1w0d: ISAKMP: Sending private address: 10.16.20.2
1w0d: ISAKMP: Unknown Attr: IP4_NETMASK (0x2)
1w0d: ISAKMP: Sending ADDRESS_EXPIRY seconds left to use the address:
86395
1w0d: ISAKMP: Sending APPLICATION_VERSION string: Cisco Internetwork
Operating System Software
IOS (tm) C2600 Software (C2600-JK903S-M), Version 12.2(8)T, RELEASE
SOFTWARE (fc2)
TAC Support: http://www.cisco.com/tac
Copyright (c) 1986-2002 by cisco Systems, Inc.
Compiled Thu 14-Feb-02 16:50 by ccai
1w0d: ISAKMP: Unknown Attr: UNKNOWN (0x7000)
1w0d: ISAKMP: Unknown Attr: UNKNOWN (0x7001)
1w0d: ISAKMP: Sending split include name 108 network 14.38.0.0 mask
255.255.0.0 protocol 0, src port 0, dst port 0

1w0d: ISAKMP: Unknown Attr: UNKNOWN (0x7007)
1w0d: ISAKMP: Unknown Attr: UNKNOWN (0x7008)
1w0d: ISAKMP: Unknown Attr: UNKNOWN (0x7005)
1w0d: ISAKMP (0:2): responding to peer config from 10.0.0.1. ID =
-1911189201
1w0d: ISAKMP (0:2): sending packet to 10.0.0.1 (R) CONF_ADDR
1w0d: ISAKMP (0:2): deleting node -1911189201 error FALSE reason ""
1w0d: ISAKMP (0:2): Input = IKE_MSG_FROM_AAA, IKE_AAA_GROUP_ATTR
Old State = IKE_CONFIG_AUTHOR_AAA_AWAIT New State = IKE_P1_COMPLETE

1w0d: AAA/MEMORY: free_user (0x830CAF28) user='3000client' ruser='NULL'
port='ISAKMP-GROUP-AUTH' rem_addr='10.0.0.1' authen_type=NONE
service=LOGIN priv=0
1w0d: ISAKMP (0:2): received packet from 10.0.0.1 (R) QM_IDLE
1w0d: ISAKMP (0:2): processing HASH payload. message ID = 132557281
1w0d: ISAKMP (0:2): processing SA payload. message ID = 132557281
1w0d: ISAKMP (0:2): Checking IPSec proposal 1
1w0d: ISAKMP: transform 1, ESP_3DES
1w0d: ISAKMP: attributes in transform:
1w0d: ISAKMP: authenticator is HMAC-MD5
1w0d: ISAKMP: encaps is 1
1w0d: ISAKMP: SA life type in seconds
1w0d: ISAKMP: SA life duration (VPI) of 0x0 0x20 0xC4 0x9B
1w0d: IPSEC(validate_proposal): transform proposal (prot 3, trans 3,
hmac_alg 1) not supported
1w0d: ISAKMP (0:2): atts not acceptable. Next payload is 0
```


1w0d: ISAKMP (0:2): skipping next ANDeD proposal (1)
1w0d: ISAKMP (0:2): Checking IPsec proposal 2
1w0d: ISAKMP: transform 1, ESP_3DES
1w0d: ISAKMP: attributes in transform:
1w0d: ISAKMP: authenticator is HMAC-SHA
1w0d: ISAKMP: encaps is 1
1w0d: ISAKMP: SA life type in seconds
1w0d: ISAKMP: SA life duration (VPI) of 0x0 0x20 0xC4 0x9B
1w0d: ISAKMP (0:2): atts are acceptable.
1w0d: ISAKMP (0:2): Checking IPsec proposal 2
1w0d: ISAKMP (0:2): transform 1, IPPCP LZS
1w0d: ISAKMP: attributes in transform:
1w0d: ISAKMP: encaps is 1
1w0d: ISAKMP: SA life type in seconds
1w0d: ISAKMP: SA life duration (VPI) of 0x0 0x20 0xC4 0x9B
1w0d: IPSEC(validate_proposal): transform proposal (prot 4, trans 3,
hmac_alg 0) not supported
1w0d: ISAKMP (0:2): atts not acceptable. Next payload is 0
1w0d: ISAKMP (0:2): Checking IPsec proposal 3
1w0d: ISAKMP: transform 1, ESP_3DES
1w0d: ISAKMP: attributes in transform:
1w0d: ISAKMP: authenticator is HMAC-MD5
1w0d: ISAKMP: encaps is 1
1w0d: ISAKMP: SA life type in seconds
1w0d: ISAKMP: SA life duration (VPI) of 0x0 0x20 0xC4 0x9B
1w0d: IPSEC(validate_proposal): transform proposal (prot 3, trans 3,
hmac_alg 1) not supported
1w0d: ISAKMP (0:2): atts not acceptable. Next payload is 0
1w0d: ISAKMP (0:2): Checking IPsec proposal 4
1w0d: ISAKMP: transform 1, ESP_3DES
1w0d: ISAKMP: attributes in transform:
1w0d: ISAKMP: authenticator is HMAC-SHA
1w0d: ISAKMP: encaps is 1
1w0d: ISAKMP: SA life type in seconds
1w0d: ISAKMP: SA life duration (VPI) of 0x0 0x20 0xC4 0x9B

1w0d: ISAKMP (0:2): atts are acceptable.

1w0d: IPSEC(validate_proposal_request): proposal part #1,
(key eng. msg.) INBOUND local= 10.1.1.1, remote= 10.0.0.1,
local_proxy= 10.1.1.1/255.255.255.255/0/0 (type=1),
remote_proxy= 10.16.20.2/255.255.255.255/0/0 (type=1),
protocol= ESP, transform= esp-3des esp-sha-hmac ,
lifedur= 0s and 0kb,
spi= 0x0(0), conn_id= 0, keysize= 0, flags= 0x4
1w0d: ISAKMP (0:2): processing NONCE payload. message ID = 132557281
1w0d: ISAKMP (0:2): processing ID payload. message ID = 132557281
1w0d: ISAKMP (0:2): processing ID payload. message ID = 132557281
1w0d: ISAKMP (0:2): asking for 1 spis from ipsec
1w0d: ISAKMP (0:2): Node 132557281, Input = IKE_MESG_FROM_PEER,
IKE_QM_EXCH
Old State = IKE_QM_READY New State = IKE_QM_SPI_STARVE

1w0d: IPSEC(key_engine): got a queue event...
1w0d: IPSEC(spi_response): getting spi 245824456 for SA
from 10.1.1.1 to 10.0.0.1 for prot 3
1w0d: ISAKMP: received ke message (2/1)
1w0d: ISAKMP (0:2): sending packet to 10.0.0.1 (R) QM_IDLE
1w0d: ISAKMP (0:2): Node 132557281, Input = IKE_MESG_FROM_IPSEC,
IKE_SPI_REPLY
Old State = IKE_QM_SPI_STARVE New State = IKE_QM_R_QM2

1w0d: ISAKMP (0:2): received packet from 10.0.0.1 (R) QM_IDLE

```
1w0d: ISAKMP (0:2): Creating IPsec SAs
1w0d: inbound SA from 10.0.0.1 to 10.1.1.1
(proxy 10.16.20.2 to 10.1.1.1)
1w0d: has spi 0xEA6FBC8 and conn_id 2000 and flags 4
1w0d: lifetime of 2147483 seconds
1w0d: outbound SA from 10.1.1.1 to 10.0.0.1 (proxy
10.1.1.1 to 10.16.20.2 )
1w0d: has spi 1009463339 and conn_id 2001 and flags C
1w0d: lifetime of 2147483 seconds

1w0d: ISAKMP (0:2): deleting node 132557281 error FALSE reason "quick mode
done (await())"
1w0d: ISAKMP (0:2): Node 132557281, Input = IKE_MESG_FROM_PEER,
IKE_QM_EXCH
Old State = IKE_QM_R_QM2 New State = IKE_QM_PHASE2_COMPLETE

1w0d: IPSEC(key_engine): got a queue event...
1w0d: IPSEC(initialize_sas): ,
(key eng. msg.) INBOUND local= 10.1.1.1, remote= 10.0.0.1,
local_proxy= 10.1.1.1/0.0.0.0/0/0 (type=1),
remote_proxy= 10.16.20.2/0.0.0.0/0/0 (type=1),
protocol= ESP, transform= esp-3des esp-sha-hmac ,
lifedur= 2147483s and 0kb,
spi= 0xEA6FBC8(245824456), conn_id= 2000, keysize= 0, flags= 0x4
1w0d: IPSEC(initialize_sas): ,
(key eng. msg.) OUTBOUND local= 10.1.1.1, remote= 10.0.0.1,
local_proxy= 10.1.1.1/0.0.0.0/0/0 (type=1),
remote_proxy= 10.16.20.2/0.0.0.0/0/0 (type=1),
protocol= ESP, transform= esp-3des esp-sha-hmac ,
lifedur= 2147483s and 0kb,
spi= 0x3C2B302B(1009463339), conn_id= 2001, keysize= 0, flags= 0xC
1w0d: IPSEC(create_sa): sa created,
(sa) sa_dest= 10.1.1.1, sa_prot= 50,
sa_spi= 0xEA6FBC8(245824456),
sa_trans= esp-3des esp-sha-hmac , sa_conn_id= 2000
1w0d: IPSEC(create_sa): sa created,
(sa) sa_dest= 10.0.0.1, sa_prot= 50,
sa_spi= 0x3C2B302B(1009463339),
sa_trans= esp-3des esp-sha-hmac , sa_conn_id= 2001
1w0d: ISAKMP: received ke message (4/1)
1w0d: ISAKMP: Locking CONFIG struct 0x830BF118 for
crypto_ikmp_config_handle_kei_mess, count 3
1w0d: ISAKMP (0:1): purging SA., sa=83196748, delme=83196748
1w0d: ISAKMP: Unlocking CONFIG struct 0x830BF118 on return of attributes,
count 2
1w0d: ISAKMP (0:2): received packet from 10.0.0.1 (R) QM_IDLE
1w0d: ISAKMP (0:2): processing HASH payload. message ID = -1273332908
1w0d: ISAKMP (0:2): processing SA payload. message ID = -1273332908
1w0d: ISAKMP (0:2): Checking IPsec proposal 1
1w0d: ISAKMP: transform 1, ESP_3DES
1w0d: ISAKMP: attributes in transform:
1w0d: ISAKMP: authenticator is HMAC-MD5
1w0d: ISAKMP: encaps is 1
1w0d: ISAKMP: SA life type in seconds
1w0d: ISAKMP: SA life duration (VPI) of 0x0 0x20 0xC4 0x9B
1w0d: IPSEC(validate_proposal): transform proposal (prot 3, trans 3,
hmac_alg 1) not supported
1w0d: ISAKMP (0:2): atts not acceptable. Next payload is 0
1w0d: ISAKMP (0:2): skipping next ANDed proposal (1)
1w0d: ISAKMP (0:2): Checking IPsec proposal 2
1w0d: ISAKMP: transform 1, ESP_3DES
1w0d: ISAKMP: attributes in transform:
1w0d: ISAKMP: authenticator is HMAC-SHA
```

1w0d: ISAKMP: encaps is 1
1w0d: ISAKMP: SA life type in seconds
1w0d: ISAKMP: SA life duration (VPI) of 0x0 0x20 0xC4 0x9B
1w0d: ISAKMP (0:2): atts are acceptable.
1w0d: ISAKMP (0:2): Checking IPsec proposal 2
1w0d: ISAKMP (0:2): transform 1, IPPCP LZS
1w0d: ISAKMP: attributes in transform:
1w0d: ISAKMP: encaps is 1
1w0d: ISAKMP: SA life type in seconds
1w0d: ISAKMP: SA life duration (VPI) of 0x0 0x20 0xC4 0x9B
1w0d: IPSEC(validate_proposal): transform proposal (prot 4, trans 3, hmac_alg 0) not supported
1w0d: ISAKMP (0:2): atts not acceptable. Next payload is 0
1w0d: ISAKMP (0:2): Checking IPsec proposal 3
1w0d: ISAKMP: transform 1, ESP_3DES
1w0d: ISAKMP: attributes in transform:
1w0d: ISAKMP: authenticator is HMAC-MD5
1w0d: ISAKMP: encaps is 1
1w0d: ISAKMP: SA life type in seconds
1w0d: ISAKMP: SA life duration (VPI) of 0x0 0x20 0xC4 0x9B
1w0d: IPSEC(validate_proposal): transform proposal (prot 3, trans 3, hmac_alg 1) not supported
1w0d: ISAKMP (0:2): atts not acceptable. Next payload is 0
1w0d: ISAKMP (0:2): Checking IPsec proposal 4
1w0d: ISAKMP: transform 1, ESP_3DES
1w0d: ISAKMP: attributes in transform:
1w0d: ISAKMP: authenticator is HMAC-SHA
1w0d: ISAKMP: encaps is 1
1w0d: ISAKMP: SA life type in seconds
1w0d: ISAKMP: SA life duration (VPI) of 0x0 0x20 0xC4 0x9B
1w0d: ISAKMP (0:2): atts are acceptable.
1w0d: IPSEC(validate_proposal_request): proposal part #
vpn2611#1,
(key eng. msg.) INBOUND local= 10.1.1.1, remote= 10.0.0.1,
local_proxy= 14.38.0.0/255.255.0.0/0/0 (type=4),
remote_proxy= 10.16.20.2/255.255.255.255/0/0 (type=1),
protocol= ESP, transform= esp-3des esp-sha-hmac ,
lifedur= 0s and 0kb,
spi= 0x0(0), conn_id= 0, keysize= 0, flags= 0x4
1w0d: ISAKMP (0:2): processing NONCE payload. message ID = -1273332908
1w0d: ISAKMP (0:2): processing ID payload. message ID = -1273332908
1w0d: ISAKMP (0:2): processing ID payload. message ID = -1273332908
1w0d: ISAKMP (0:2): asking for 1 spis from ipsec
1w0d: ISAKMP (0:2): Node -1273332908, Input = IKE_MESG_FROM_PEER,
IKE_QM_EXCH
Old State = IKE_QM_READY New State = IKE_QM_SPI_STARVE

1w0d: IPSEC(key_engine): got a queue event...
1w0d: IPSEC(spi_response): getting spi 593097454 for SA
from 10.1.1.1 to 10.0.0.1
vpn2611#
vpn2611#2 for prot 3
1w0d: ISAKMP: received ke message (2/1)
1w0d: ISAKMP (0:2): sending packet to 10.0.0.1 (R) QM_IDLE
1w0d: ISAKMP (0:2): Node -1273332908, Input = IKE_MESG_FROM_IPSEC,
IKE_SPI_REPLY
Old State = IKE_QM_SPI_STARVE New State = IKE_QM_R_QM2

1w0d: ISAKMP (0:2): received packet from 10.0.0.1 (R) QM_IDLE

1w0d: ISAKMP (0:2): Creating IPsec SAs
1w0d: inbound SA from 10.0.0.1 to 10.1.1.1
(proxy 10.16.20.2 to 14.38.0.0)

```

1w0d: has spi 0x2359F2EE and conn_id 2002 and flags 4
1w0d: lifetime of 2147483 seconds
1w0d: outbound SA from 10.1.1.1 to 10.0.0.1 (proxy
14.38.0.0 to 10.16.20.2 )
1w0d: has spi 1123818858 and conn_id 2003 and flags C
1w0d: lifetime of 2147483 seconds

1w0d: ISAKMP (0:2): deleting node -1273332908 erro
vpn2611#un ar FALSE reason "quick mode done (await())"
1w0d: ISAKMP (0:2): Node -1273332908, Input = IKE_MESG_FROM_PEER,
IKE_QM_EXCH
Old State = IKE_QM_R_QM2 New State = IKE_QM_PHASE2_COMPLETE

1w0d: IPSEC(key_engine): got a queue event...
1w0d: IPSEC(initialize_sas): ,
(key eng. msg.) INBOUND local= 10.1.1.1, remote= 10.0.0.1,
local_proxy= 172.18.124.0/255.255.255.0/0/0 (type=4),
remote_proxy= 10.16.20.2/0.0.0.0/0/0 (type=1),
protocol= ESP, transform= esp-3des esp-sha-hmac ,
lifedur= 2147483s and 0kb,
spi= 0x2359F2EE(593097454), conn_id= 2002, keysize= 0, flags= 0x4
1w0d: IPSEC(initialize_sas): ,
(key eng. msg.) OUTBOUND local= 10.1.1.1, remote= 10.0.0.1,
local_proxy= 172.18.124.0/255.255.255.0/0/0 (type=4),
remote_proxy= 10.16.20.2/0.0.0.0/0/0 (type=1),
protocol= ESP, transform= esp-3des esp-sh11
All possible debugging has been turned off
vpn2611#a-hmac ,
lifedur= 2147483s and 0kb,
spi= 0x42FC1D6A(1123818858), conn_id= 2003, keysize= 0, flags= 0xC
1w0d: IPSEC(create_sa): sa created,
(sa) sa_dest= 10.1.1.1, sa_prot= 50,
sa_spi= 0x2359F2EE(593097454),
sa_trans= esp-3des esp-sha-hmac , sa_conn_id= 2002
1w0d: IPSEC(create_sa): sa created,
(sa) sa_dest= 10.0.0.1, sa_prot= 50,
sa_spi= 0x42FC1D6A(1123818858),
sa_trans= esp-3des esp-sha-hmac , sa_conn_id= 2003

```

Clientlogboeken

Start de LogViewer op de VPN-client om de logbestanden te bekijken. Zorg ervoor dat het filter voor alle geconfigureerde klassen op Hoog is ingesteld. Dit is een voorbeeldloguitvoer:

```

1 16:48:10.203 03/05/02 Sev=Info/6 DIALER/0x63300002
Initiating connection.

2 16:48:10.203 03/05/02 Sev=Info/4 CM/0x63100002
Begin connection process

3 16:48:10.223 03/05/02 Sev=Info/4 CM/0x63100004
Establish secure connection using Ethernet

4 16:48:10.223 03/05/02 Sev=Info/4 CM/0x63100026
Attempt connection with server "10.1.1.1"

5 16:48:10.223 03/05/02 Sev=Info/6 IKE/0x6300003B

```

Attempting to establish a connection with 10.1.1.1.

6 16:48:10.273 03/05/02 Sev=Info/4 IKE/0x63000013
SENDING >>> ISAKMP OAK AG (SA, KE, NON, ID, VID, VID, VID) to 10.1.1.1

7 16:48:10.273 03/05/02 Sev=Info/4 IPSEC/0x63700014
Deleted all keys

8 16:48:10.994 03/05/02 Sev=Info/5 IKE/0x6300002F
Received ISAKMP packet: peer = 10.1.1.1

9 16:48:10.994 03/05/02 Sev=Info/4 IKE/0x63000014
RECEIVING <<< ISAKMP OAK AG (SA, VID, VID, VID, VID, KE, ID, NON, HASH)
from 10.1.1.1

10 16:48:10.994 03/05/02 Sev=Info/5 IKE/0x63000059
Vendor ID payload = 12F5F28C457168A9702D9FE274CC0100

11 16:48:10.994 03/05/02 Sev=Info/5 IKE/0x63000001
Peer is a Cisco-Unity compliant peer

12 16:48:10.994 03/05/02 Sev=Info/5 IKE/0x63000059
Vendor ID payload = AFCAD71368A1F1C96B8696FC77570100

13 16:48:10.994 03/05/02 Sev=Info/5 IKE/0x63000001
Peer supports DPD

14 16:48:10.994 03/05/02 Sev=Info/5 IKE/0x63000059
Vendor ID payload = 2D275A044215F48F531958AB2578EB2D

15 16:48:10.994 03/05/02 Sev=Info/5 IKE/0x63000059
Vendor ID payload = 09002689DFD6B712

16 16:48:11.025 03/05/02 Sev=Info/4 IKE/0x63000013
SENDING >>> ISAKMP OAK AG *(HASH, NOTIFY:STATUS_INITIAL_CONTACT) to 10.1.1.1

17 16:48:11.045 03/05/02 Sev=Info/5 IKE/0x6300002F
Received ISAKMP packet: peer = 10.1.1.1

18 16:48:11.045 03/05/02 Sev=Info/4 IKE/0x63000014
RECEIVING <<< ISAKMP OAK INFO *(HASH, NOTIFY:STATUS_RESP_LIFETIME)
from 10.1.1.1

19 16:48:11.045 03/05/02 Sev=Info/5 IKE/0x63000044
RESPONDER-LIFETIME notify has value of 86400 seconds

20 16:48:11.045 03/05/02 Sev=Info/5 IKE/0x63000046
This SA has already been alive for 1 seconds,
setting expiry to 86399 seconds from now

21 16:48:11.075 03/05/02 Sev=Info/5 IKE/0x6300002F
Received ISAKMP packet: peer = 10.1.1.1

22 16:48:11.075 03/05/02 Sev=Info/4 IKE/0x63000014
RECEIVING <<< ISAKMP OAK TRANS *(HASH, ATTR) from 10.1.1.1

23 16:48:11.075 03/05/02 Sev=Info/4 CM/0x63100015
Launch xAuth application

24 16:48:14.920 03/05/02 Sev=Info/4 CM/0x63100017
xAuth application returned

25 16:48:14.920 03/05/02 Sev=Info/4 IKE/0x63000013
SENDING >>> ISAKMP OAK TRANS *(HASH, ATTR) to 10.1.1.1

26 16:48:14.990 03/05/02 Sev=Info/5 IKE/0x6300002F
Received ISAKMP packet: peer = 10.1.1.1

27 16:48:14.990 03/05/02 Sev=Info/4 IKE/0x63000014
RECEIVING <<< ISAKMP OAK TRANS *(HASH, ATTR) from 10.1.1.1

28 16:48:14.990 03/05/02 Sev=Info/4 CM/0x6310000E
Established Phase 1 SA. 1 Phase 1 SA in the system

29 16:48:15.000 03/05/02 Sev=Info/4 IKE/0x63000013
SENDING >>> ISAKMP OAK TRANS *(HASH, ATTR) to 10.1.1.1

30 16:48:15.010 03/05/02 Sev=Info/5 IKE/0x6300005D
Client sending a firewall request to concentrator

31 16:48:15.010 03/05/02 Sev=Info/5 IKE/0x6300005C
Firewall Policy: Product=Cisco Integrated Client,
Capability= (Centralized Policy Push).

32 16:48:15.010 03/05/02 Sev=Info/4 IKE/0x63000013
SENDING >>> ISAKMP OAK TRANS *(HASH, ATTR) to 10.1.1.1

33 16:48:15.141 03/05/02 Sev=Info/5 IKE/0x6300002F
Received ISAKMP packet: peer = 10.1.1.1

34 16:48:15.141 03/05/02 Sev=Info/4 IKE/0x63000014
RECEIVING <<< ISAKMP OAK TRANS *(HASH, ATTR) from 10.1.1.1

35 16:48:15.141 03/05/02 Sev=Info/5 IKE/0x63000010
MODE_CFG_REPLY: Attribute = INTERNAL_IPV4_ADDRESS: , value = 10.16.20.2

36 16:48:15.141 03/05/02 Sev=Info/5 IKE/0xA3000017
MODE_CFG_REPLY: The received (INTERNAL_ADDRESS_EXPIRY) attribute and value
(86395) is not supported

37 16:48:15.141 03/05/02 Sev=Info/5 IKE/0x6300000E
MODE_CFG_REPLY: Attribute = APPLICATION_VERSION, value = Cisco Internetwork
Operating System Software IOS (tm) C2600 Software (C2600-JK903S-M),
Version 12.2(8)T, RELEASE SOFTWARE (fc2)
TAC Support: <http://www.cisco.com/tac>
Copyright (c) 1986-2002 by cisco Systems, Inc.
Compiled Thu 14-Feb-02 16:50 by ccai

38 16:48:15.141 03/05/02 Sev=Info/5 IKE/0x6300000D
MODE_CFG_REPLY: Attribute = MODECFG_UNITY_SPLIT_INCLUDE (# of split_nets),
value = 0x00000001

39 16:48:15.141 03/05/02 Sev=Info/5 IKE/0x6300000F
SPLIT_NET #1
subnet = 172.18.124.0
mask = 255.255.255.0
protocol = 0
src port = 0
dest port=0

40 16:48:15.141 03/05/02 Sev=Info/4 CM/0x63100019
Mode Config data received

41 16:48:15.151 03/05/02 Sev=Info/5 IKE/0x63000055

Received a key request from Driver for IP address 10.1.1.1,
GW IP = 10.1.1.1

42 16:48:15.151 03/05/02 Sev=Info/4 IKE/0x63000013
SENDING >>> ISAKMP OAK QM *(HASH, SA, NON, ID, ID) to 10.1.1.1

43 16:48:15.361 03/05/02 Sev=Info/4 IPSEC/0x63700014
Deleted all keys

44 16:48:15.461 03/05/02 Sev=Info/5 IKE/0x6300002F
Received ISAKMP packet: peer = 10.1.1.1

45 16:48:15.461 03/05/02 Sev=Info/4 IKE/0x63000014
RECEIVING <<< ISAKMP OAK QM *(HASH, SA, NON, ID, ID,
NOTIFY:STATUS_RESP_LIFETIME) from 10.1.1.1

46 16:48:15.461 03/05/02 Sev=Info/5 IKE/0x63000044
RESPONDER-LIFETIME notify has value of 3600 seconds

47 16:48:15.461 03/05/02 Sev=Info/5 IKE/0x63000045
RESPONDER-LIFETIME notify has value of 4608000 kb

48 16:48:15.461 03/05/02 Sev=Info/4 IKE/0x63000013
SENDING >>> ISAKMP OAK QM *(HASH) to 10.1.1.1

49 16:48:15.461 03/05/02 Sev=Info/5 IKE/0x63000058
Loading IPsec SA (Message ID = 0x07E6A9E1 OUTBOUND SPI = 0x0EA6FBC8
INBOUND SPI = 0x3C2B302B)

50 16:48:15.461 03/05/02 Sev=Info/5 IKE/0x63000025
Loaded OUTBOUND ESP SPI: 0x0EA6FBC8

51 16:48:15.471 03/05/02 Sev=Info/5 IKE/0x63000026
Loaded INBOUND ESP SPI: 0x3C2B302B

52 16:48:15.471 03/05/02 Sev=Info/4 CM/0x6310001A
One secure connection established

53 16:48:15.511 03/05/02 Sev=Info/6 DIALER/0x63300003
Connection established.

54 16:48:15.581 03/05/02 Sev=Info/6 DIALER/0x63300008
MAPI32 Information - Outlook not default mail client

55 16:48:16.553 03/05/02 Sev=Info/4 IPSEC/0x63700010
Created a new key structure

56 16:48:16.553 03/05/02 Sev=Info/4 IPSEC/0x6370000F
Added key with SPI=0xc8fba60e into key list

57 16:48:16.553 03/05/02 Sev=Info/4 IPSEC/0x63700010
Created a new key structure

58 16:48:16.553 03/05/02 Sev=Info/4 IPSEC/0x6370000F
Added key with SPI=0x2b302b3c into key list

59 16:48:26.357 03/05/02 Sev=Info/5 IKE/0x63000055
Received a key request from Driver for IP address 172.18.124.159,
GW IP = 10.1.1.1

60 16:48:26.357 03/05/02 Sev=Info/4 IKE/0x63000013
SENDING >>> ISAKMP OAK QM *(HASH, SA, NON, ID, ID) to 10.1.1.1

61 16:48:26.668 03/05/02 Sev=Info/5 IKE/0x6300002F
Received ISAKMP packet: peer = 10.1.1.1

62 16:48:26.668 03/05/02 Sev=Info/4 IKE/0x63000014
RECEIVING <<< ISAKMP OAK QM *(HASH, SA, NON, ID, ID,
NOTIFY:STATUS_RESP_LIFETIME) from 10.1.1.1

63 16:48:26.668 03/05/02 Sev=Info/5 IKE/0x63000044
RESPONDER-LIFETIME notify has value of 3600 seconds

64 16:48:26.668 03/05/02 Sev=Info/5 IKE/0x63000045
RESPONDER-LIFETIME notify has value of 4608000 kb

65 16:48:26.668 03/05/02 Sev=Info/4 IKE/0x63000013
SENDING >>> ISAKMP OAK QM *(HASH) to 10.1.1.1

66 16:48:26.668 03/05/02 Sev=Info/5 IKE/0x63000058
Loading IPsec SA (Message ID = 0xB41A7B54 OUTBOUND SPI = 0x2359F2EE
INBOUND SPI = 0x42FC1D6A)

67 16:48:26.668 03/05/02 Sev=Info/5 IKE/0x63000025
Loaded OUTBOUND ESP SPI: 0x2359F2EE

68 16:48:26.668 03/05/02 Sev=Info/5 IKE/0x63000026
Loaded INBOUND ESP SPI: 0x42FC1D6A

69 16:48:26.668 03/05/02 Sev=Info/4 CM/0x63100022
Additional Phase 2 SA established.

Gerelateerde informatie

- [Ondersteuning van IPSec-onderhandeling/IKE-protocollen](#)
- [Verzoek om opmerkingen \(RFC's\)](#)
- [Technische ondersteuning en documentatie – Cisco Systems](#)

Over deze vertaling

Cisco heeft dit document vertaald via een combinatie van machine- en menselijke technologie om onze gebruikers wereldwijd ondersteuningscontent te bieden in hun eigen taal. Houd er rekening mee dat zelfs de beste machinevertaling niet net zo nauwkeurig is als die van een professionele vertaler. Cisco Systems, Inc. is niet aansprakelijk voor de nauwkeurigheid van deze vertalingen en raadt aan altijd het oorspronkelijke Engelstalige document ([link](#)) te raadplegen.