

UCS B-Series 서버:RAID 컨트롤러를 이전 펌웨어로 교체하면 ESXi 호스트에서 데이터 저장소 마운트가 실패할 수 있습니다.

목차

[문제 설명:](#)

[영향을 받는 하드웨어:](#)

[UCSB-MRAID12G RAID 컨트롤러가 있는 서버:](#)

[영향을 받는 펌웨어:](#)

[영향을 받는 OS:](#)

[원인:](#)

[문제 발생 방지 방법](#)

[서버에서 이 문제가 발생한 경우 복구하는 방법](#)

[관련 버그: CSCvr11972](#)

⋮

RAID VD NAA ID .

⋮

UCSB-MRAID12G

UCSC-MRAID12G

UCSB-MRAID12G RAID ⋮

UCS B200 M4

UCS B200 M5
UCS B480 M5
UCS B420 M4

UCS C220 M4

UCS C240 M4

⋮

RAID : 24.5.x.x 24.6.x.x

예 #

***mrsasctrlr.24.5.0-0043_6.19.05.0_NA.bin

24.5.x.x 컨트롤러 펌웨어는 3.2 이전 모든 UCSM 릴리스에서 확인됨*

3.1 #의 릴리스 정보

:

=====

=====

1 vSphere Client

2

The screenshot shows the vSphere Client Configuration page for an ESXi host. The top navigation bar includes: Getting Started, Summary, Virtual Machines, Resource Allocation, Performance, Configuration, Tasks & Events, Alarms, Permissions, Maps, Storage View, and Hardware Status. A yellow warning banner states: "The ESXi host does not have persistent storage. To run virtual machines, create at least one datastore for maintaining virtual machines and other system files. Note: If you plan to use iSCSI or a network file system (NFS), ensure that your storage adapters and network connections are properly configured before continuing. To add storage now, click here to create a datastore...".

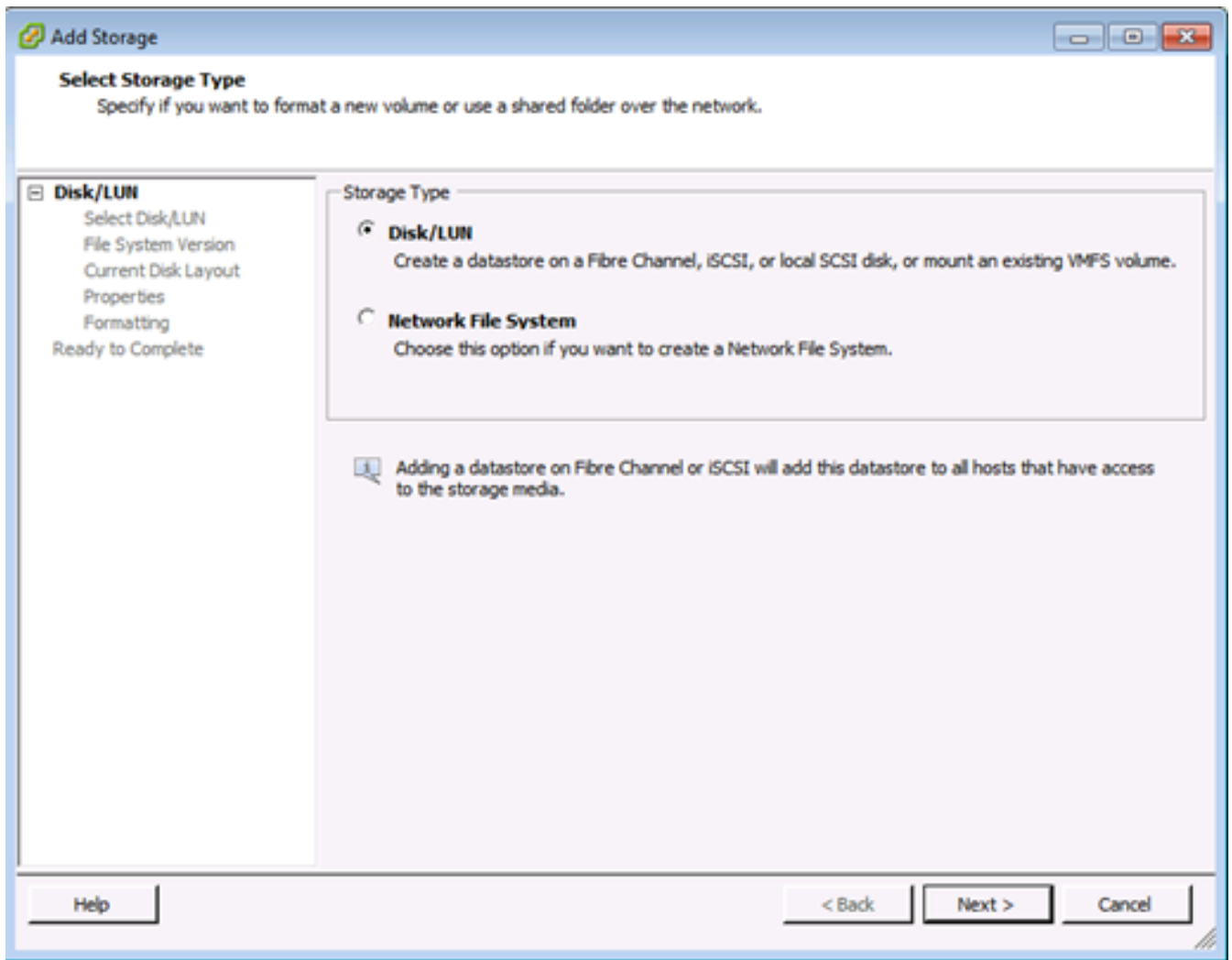
The left sidebar contains two main sections: Hardware and Software. The Hardware section includes: Processors, Memory, Storage (selected), Networking, Storage Adapters, Network Adapters, Advanced Settings, and Power Management. The Software section includes: Licensed Features, Time Configuration, DNS and Routing, Authentication Services, Power Management, Virtual Machine Startup/Shutdown, Virtual Machine Swapfile Location, Security Profile, Host Cache Configuration, System Resource Allocation, Agent VM Settings, and Advanced Settings.

The main content area is titled "View: Datastores Devices". Below this is a table with the following columns: Identification, Status, Device, Drive Type, Capacity, Free, Type, and Last Update. The table is currently empty.

Below the table is a section titled "Datastore Details" which is also empty.

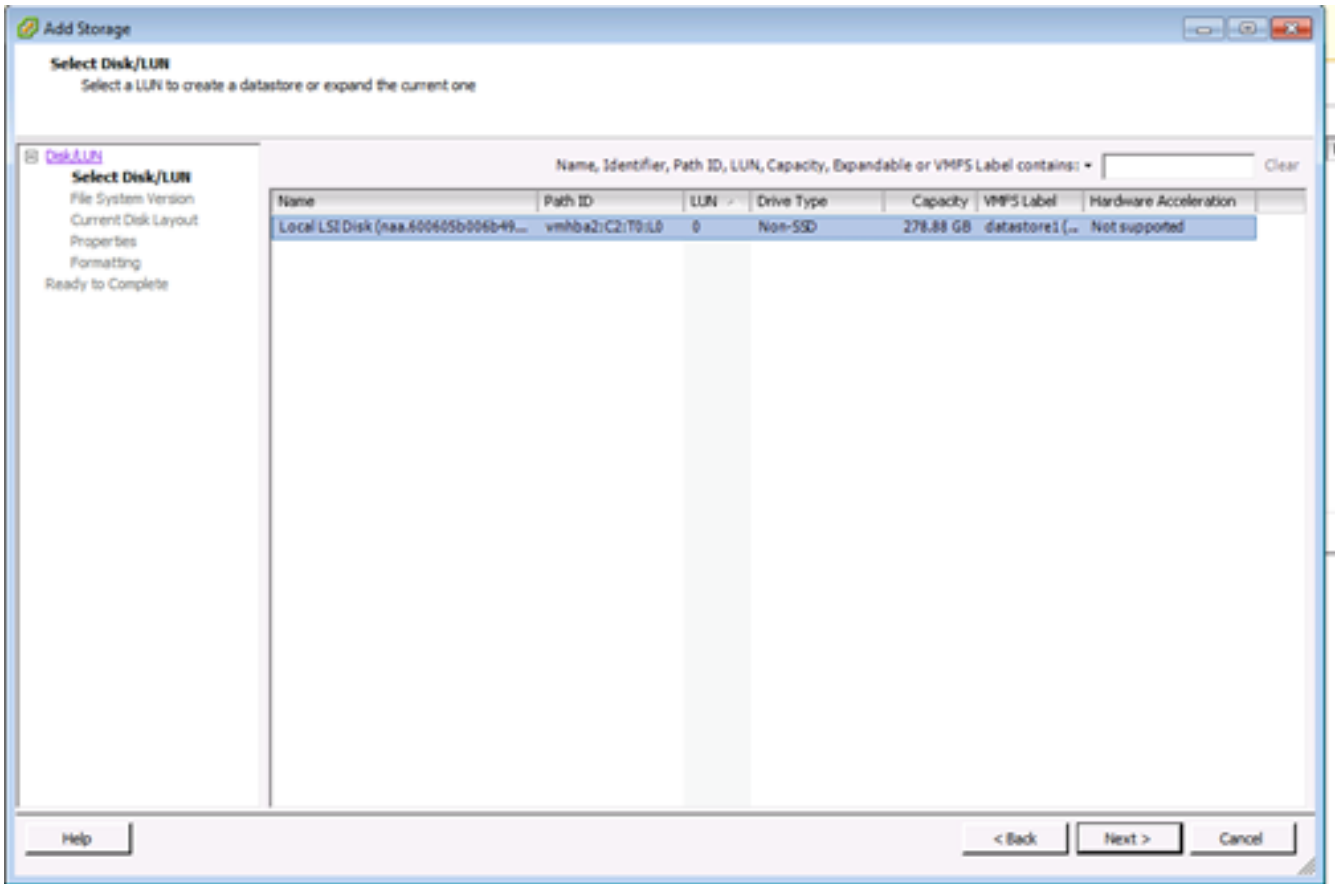
3

4 /LUN



5 LUN VMFS Label(VMFS) LUN Next() .

:VMFS LUN VMFS .



6 다음 옵션이 표시됩니다.

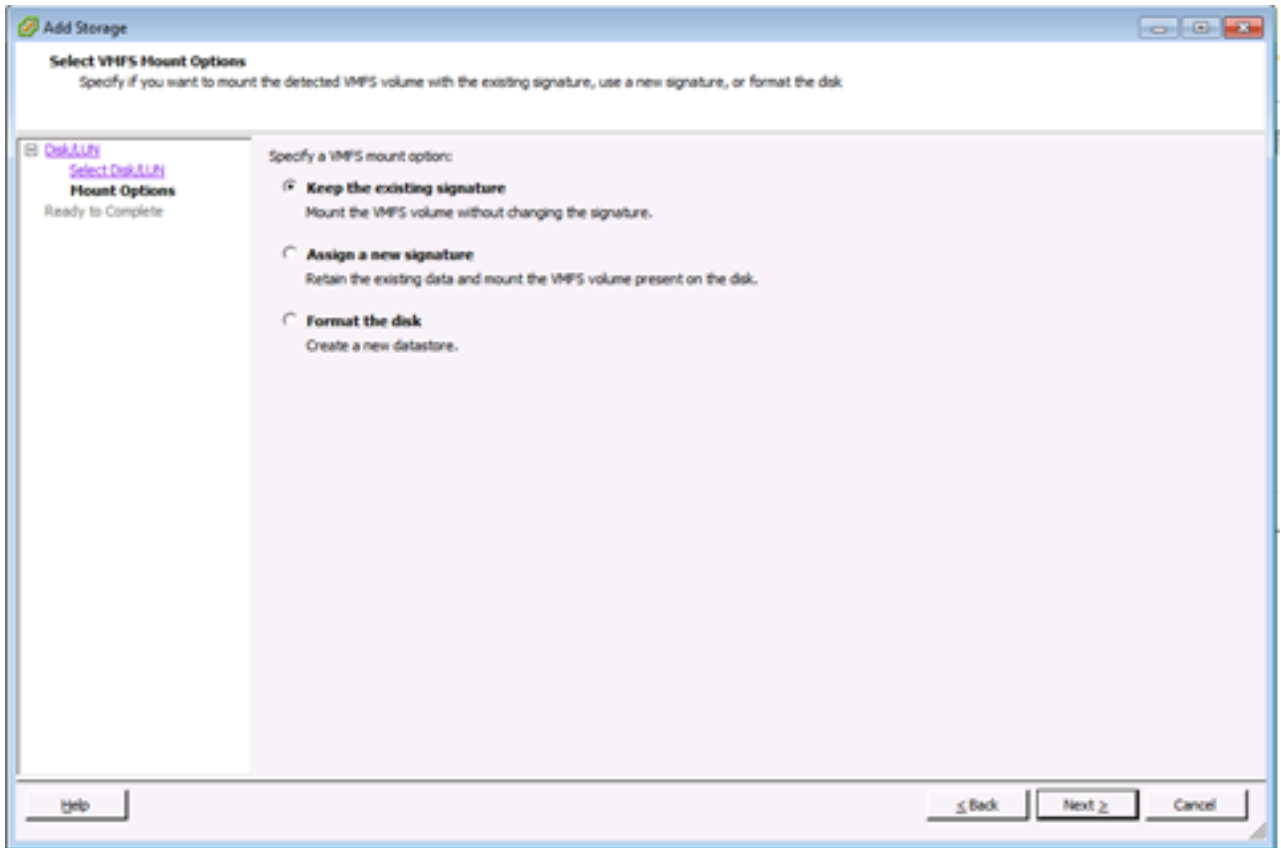
기존 서명 유지:LUN을 영구적으로 마운트(예: 재부팅 시 LUN 마운트)

새 서명 할당:LUN 재서명

디스크 포맷:LUN 다시 포맷

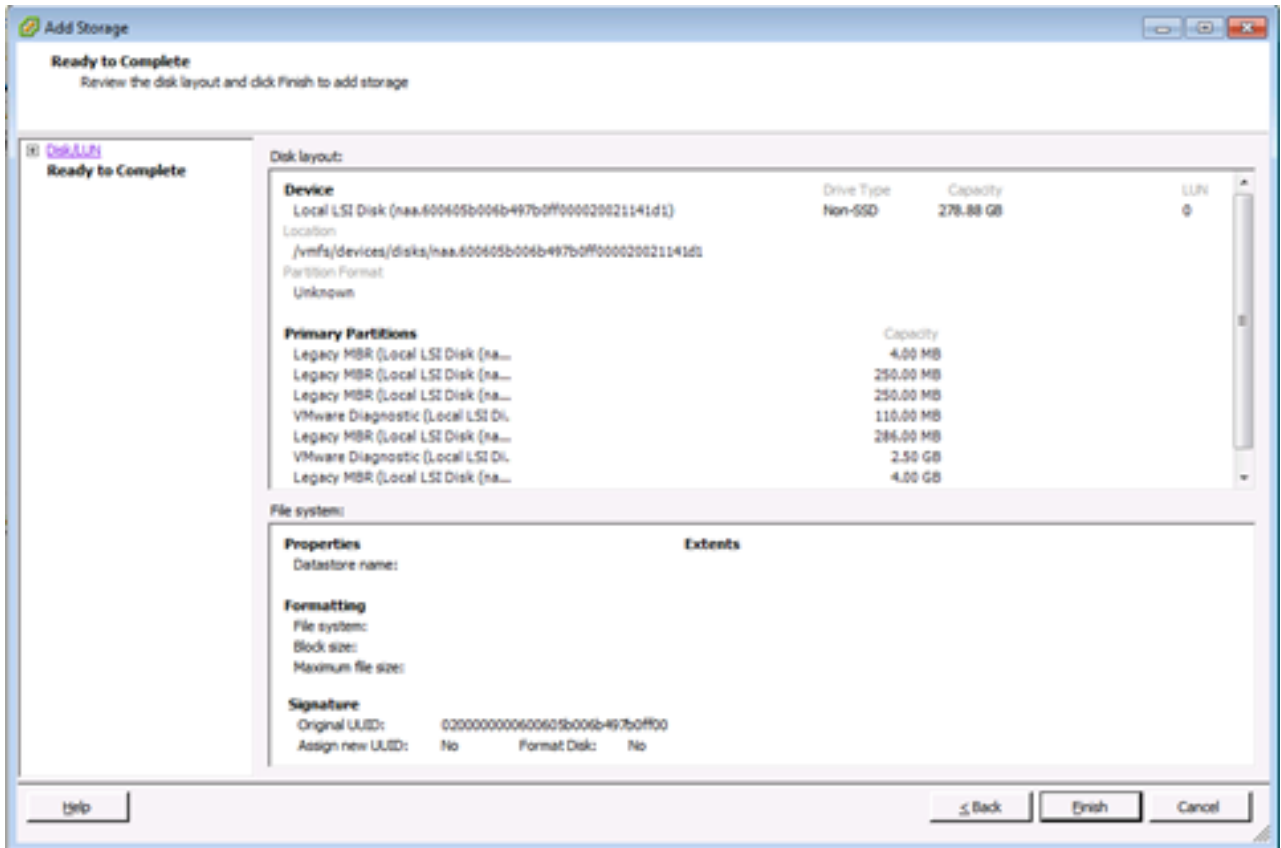
참고: 디스크 포맷LUN의 기존 데이터를 삭제합니다.재서명을 시도하기 전에 다른 호스트에서 해당 VMFS 볼륨에서 실행 중인 가상 시스템이 없는지 확인합니다. 가상 시스템은 vCenter Server 인벤토리에서 유효하지 않게 되고 해당 호스트에 다시 등록됩니다.

Assign a New Signature() Next() .



7

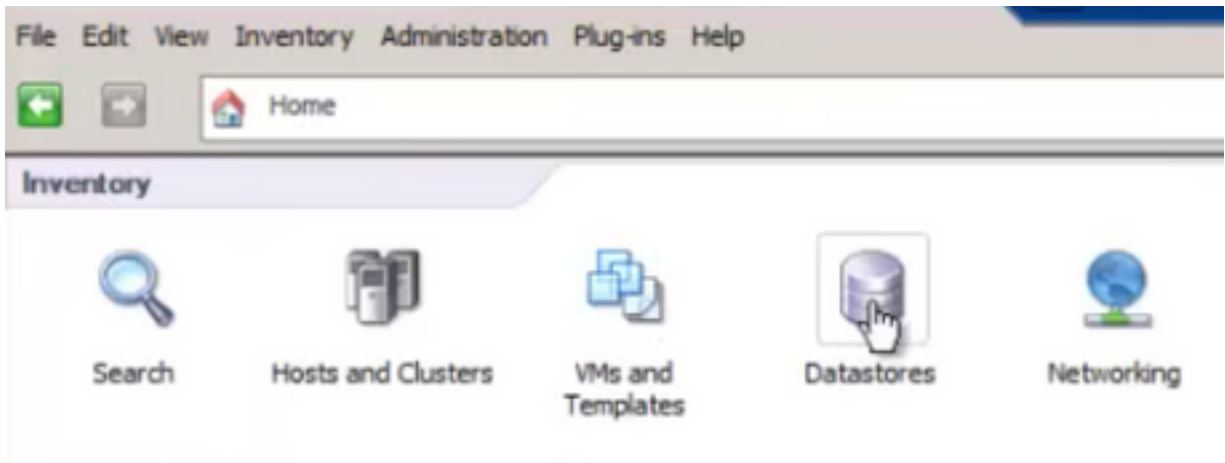
8 Ready to Complete() Finish()



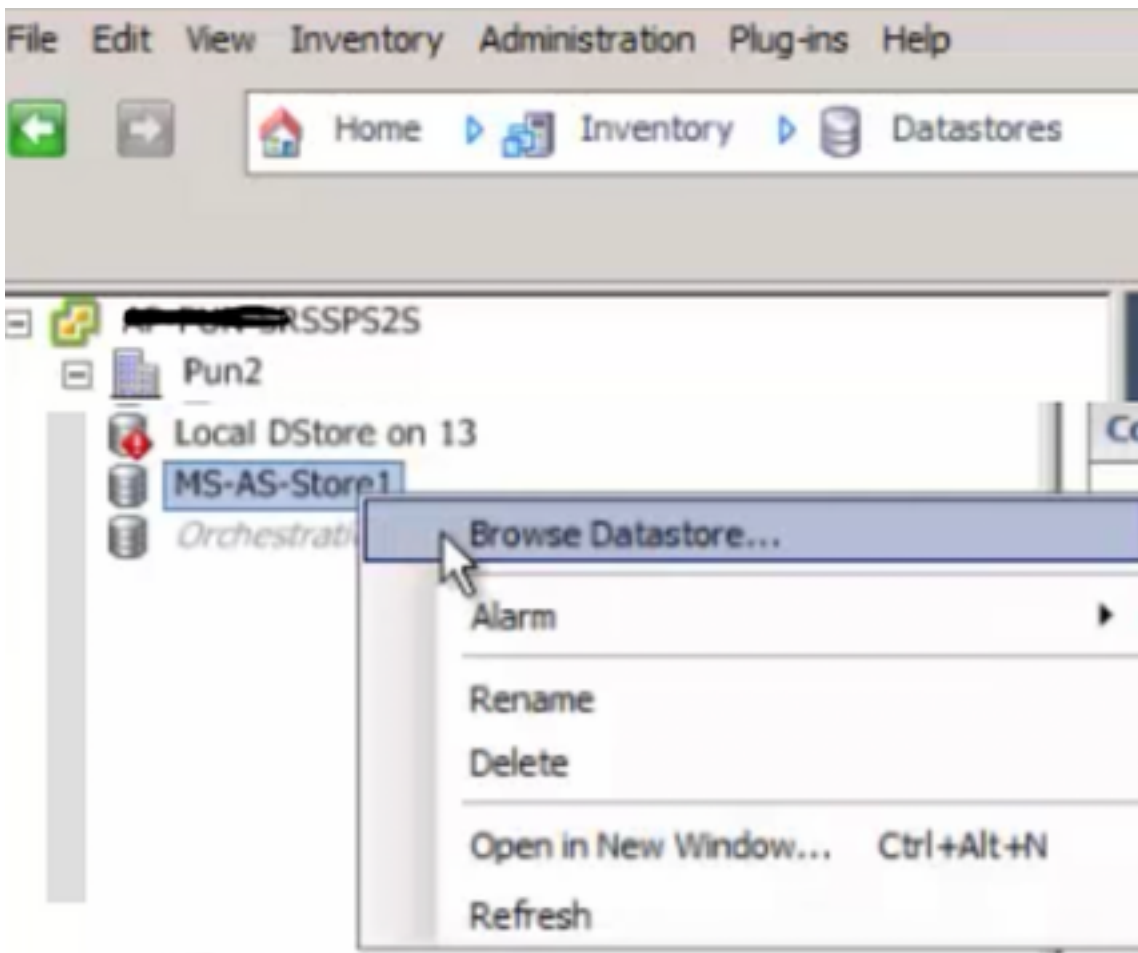
=====

=====

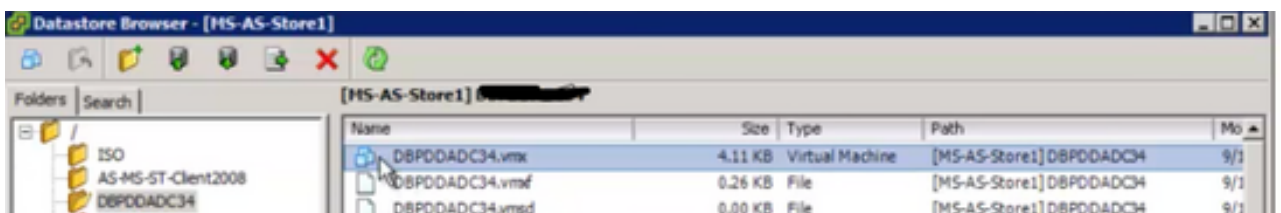
1 vSphere ,UInventory List() > Datastore().



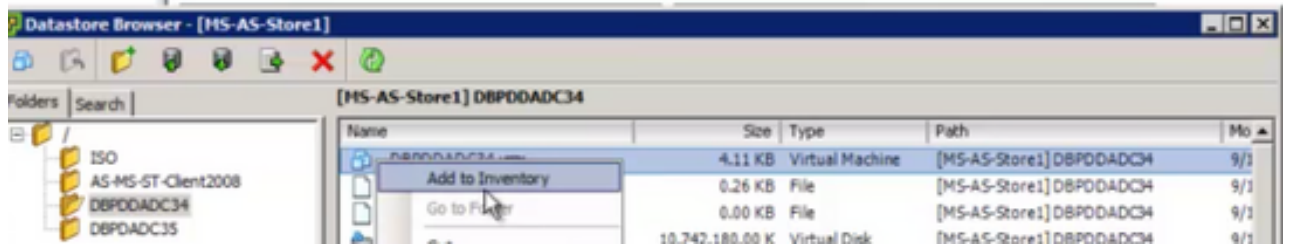
2 "Browse Datastore".



3 VM .



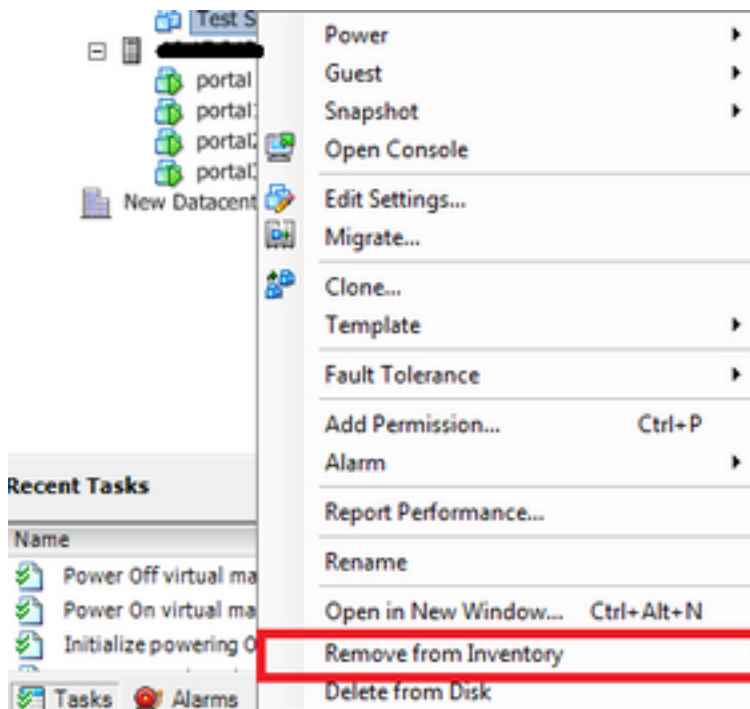
4 .vmx "Add to Inventory()".



5 ESXi VM "

6 VM .

7 VM VM "Remove from Inventory()" VM .



VM

:VM ESXi , ESXi vSphere VM " " .

: [CSCvr11972](https://bst.cloudapps.cisco.com/bugsearch/bug/CSCvr11972)

[CSCvr11972](https://bst.cloudapps.cisco.com/bugsearch/bug/CSCvr11972) MRAID12G .

<https://bst.cloudapps.cisco.com/bugsearch/bug/CSCvr11972>