

Nuova immagine di AMP Private Cloud PC3000 e ripristino del backup

Sommario

[Introduzione](#)

[Prerequisiti](#)

[Requisiti](#)

[Componenti usati](#)

[Configurazione](#)

[Verifica](#)

[Risoluzione dei problemi](#)

Introduzione

In questo documento viene descritto come ripristinare l'immagine dell'appliance hardware Advanced Malware Protection (AMP) Private Cloud allo stato originale e quindi ripristinare il backup. Se si desidera ripristinare l'accessorio allo stato originale, saltare il passaggio 8 e seguire l'installazione normale.

Prerequisiti

Requisiti

Cisco raccomanda la conoscenza dei seguenti argomenti:

- Cisco AMP Private Cloud PC300
- Accesso KVM (Virtual Machine) basato su kernel tramite CIMC (Cisco Integrated Management Controller)

Componenti usati

Le informazioni fornite in questo documento si basano sulle seguenti versioni software e hardware:

- Cisco AMP Private Cloud PC300 3.1.1
- Browser Chrome per accedere alla console KVM

Le informazioni discusse in questo documento fanno riferimento a dispositivi usati in uno specifico ambiente di emulazione. Su tutti i dispositivi menzionati nel documento la configurazione è stata ripristinata ai valori predefiniti. Se la rete è operativa, valutare attentamente eventuali conseguenze derivanti dall'uso dei comandi.

Configurazione

Passaggio 1. Accedere a CIMC. Aprire la console KVM.

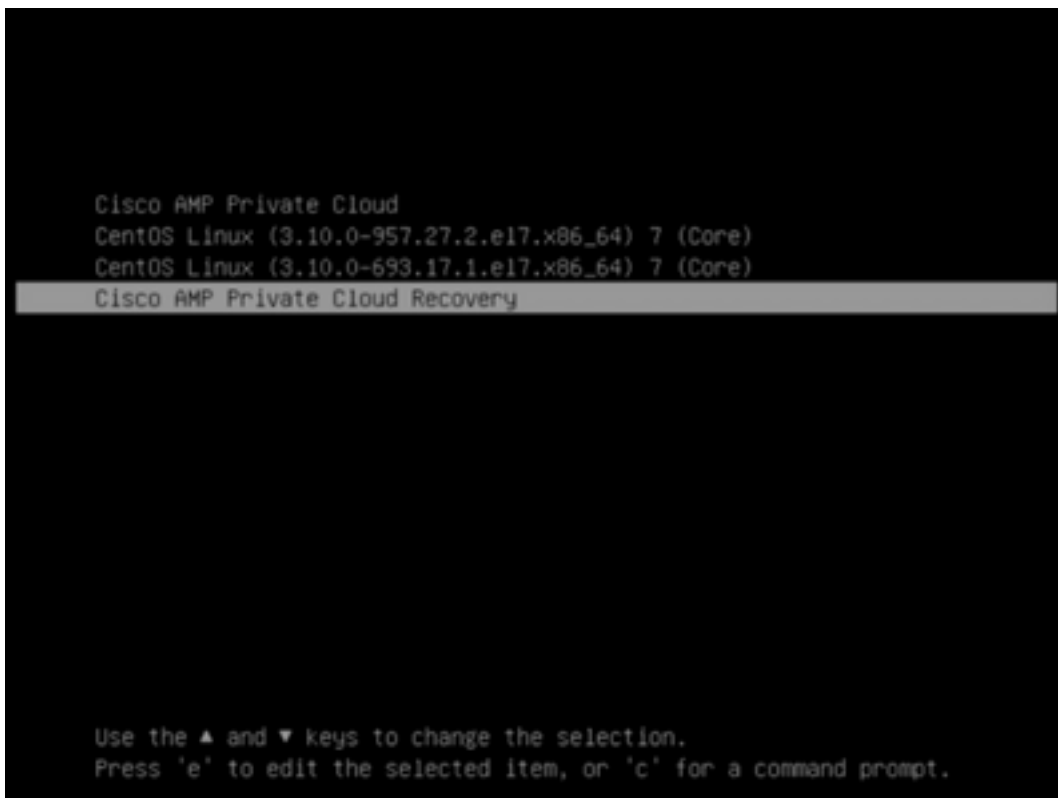
Assicurarsi che i popup siano abilitati per quella pagina nel browser.

Passaggio 2. Ricaricare l'accessorio.

È possibile riavviare l'accessorio tramite il portale di amministrazione, Secure Shell (SSH) o lo switch KVM CIMC.

Passaggio 3. Al termine del test POST (Basic Input Output System) del BIOS, viene visualizzato il menu GNU GRand Unified Bootloader (GRUB):

Selezionare **Cisco AMP Private Cloud Recovery > Appliance Reinstall Options > Appliance Reinstall**.



Attempt Regular Boot
Recovery Boot
Appliance Reinstall Options
Wipe Appliance Options
Boot previous Recovery Boot version



Press enter to boot the selected OS, "e" to edit the commands before booting or "c" for a command-line.

Appliance Reinstall
Attempt Regular Boot
Recovery Menu

The appliance will be re-installed to factory defaults. Using this functionality requires the following credentials to be entered.

Username: reinstall
Password: yes



Press enter to boot the selected OS, "e" to edit the commands before booting or "c" for a command-line.

Passaggio 4. Immettere nome utente e password.

Username: **reinstallare**

Password: **sì**

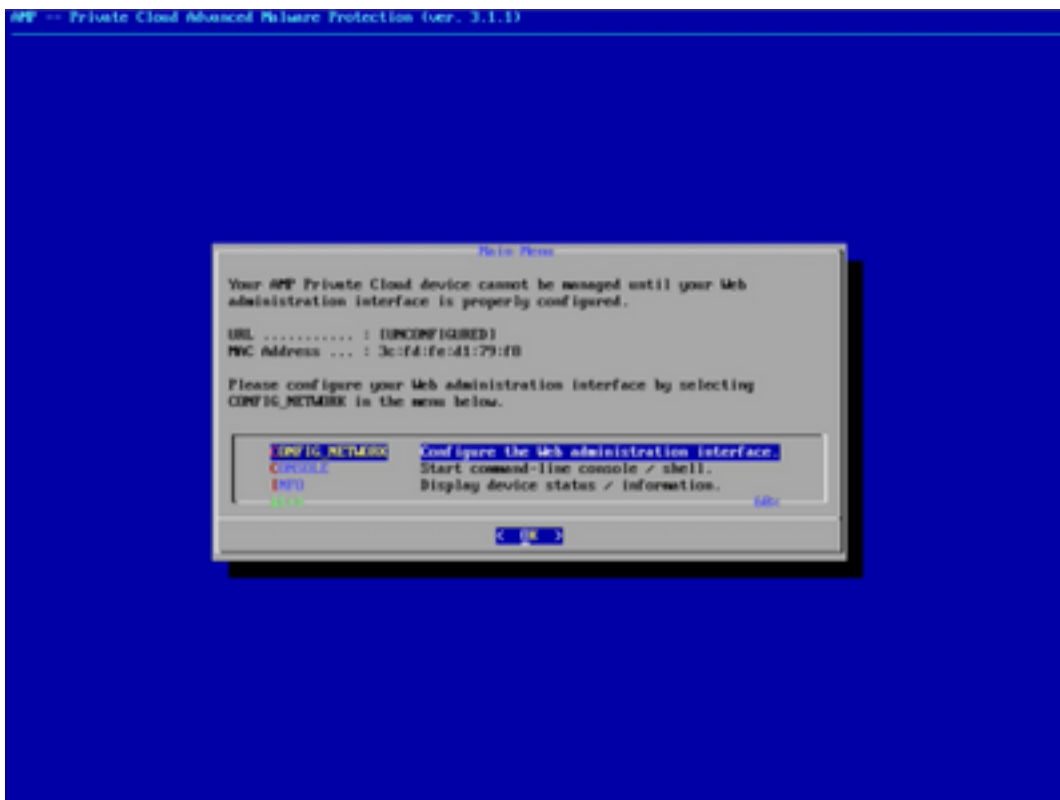
```
Enter username:
reinstall
Enter password:
_
```



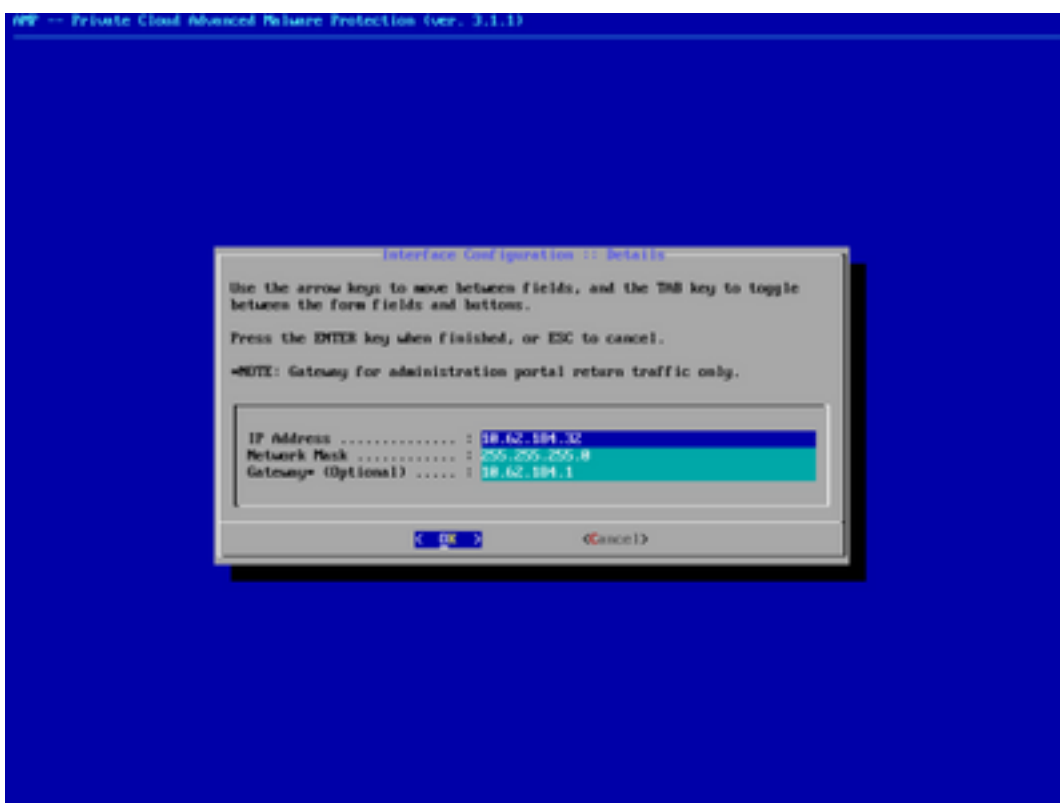
Passaggio 5. La ricreazione dell'immagine inizia e dopo il ricaricamento viene visualizzato il menu iniziale.



```
l 11.779380 usbcore: registered new interface driver usbserial_generic
l 11.749180 usbserial: USB Serial support registered for generic
l 11.733090 USB: HNP: No USB2 controller found. Probing ports directly.
l 11.703270 usb 1-6: new high-speed USB device number 2 using ohci_hcd
l 12.102011 usb 1-6: New USB device found, IDVendor=0a1b, IDProduct=0100
l 12.123011 usb 1-6: New USB device strings: Mfr=1, Product=2, SerialNumber=3
l 12.130530 usb 1-6: Product: Emulex Fibre4 HighSpeed HB
l 12.130530 usb 1-6: Manufacturer: Emulex Communications
l 12.1409123 usb 1-6: SerialNumber: 0x00E2F0CE
l 12.1461333 hub 1-6:1.0: USB hub found
l 12.1506580 hub 1-6:1.0: 7 ports detected
l 12.2675373 usb 1-7: new high-speed USB device number 3 using ohci_hcd
l 12.2705363 USB: Can't read CTR while initializing 00942
l 12.3026223 USB: probe of 00942 failed with error -5
l 12.3069953 usbcore: USB2 mouse device common for all mice
l 12.3112043 rtc_cmos 00:00: RTC can wake from S4
l 12.3204873 rtc_cmos 00:00: rtc core: registered rtc_cmos as rtc0
l 12.3204880 rtc_cmos 00:00: alarms up to one month, y1k, 114 bytes nrwakeup, 1spst
l 12.3254353 intel_pstate: intel P-state driver initializing
l 12.3322253 intel_pstate: HWP enabled
l 12.3732080 cpuidle: using governor menu
l 12.3448273 EFI Variables Facility v0.00 2009-Sep-17
l 12.3702653 tsc: refined TSC clocksource calibration: 2593.766 MHz
l 12.3841930 Switched to clocksource tsc
l 12.4017920 hidraw: *xx_VID_*xxxx_*VID_*OC_*ZigBee*...
l 12.4096543 usbhid: USB HID core driver
l 12.4119480 usb 1-7: New USB device found, IDVendor=01b4, IDProduct=0570
l 12.4119523 usb 1-7: New USB device strings: Mfr=0, Product=1, SerialNumber=0
l 12.4119553 usb 1-7: Product: USB2.0 Hub
l 12.4120443 hub 1-7:1.0: USB hub found
l 12.4129423 hub 1-7:1.0: 4 ports detected
l 12.4412243 Detected 1 PCC Subspaces
l 12.4454230 Registering PCC driver as Mailbox controller
l 12.4519080 drbg_monitor: Initializing network drbg monitor service
l 12.4562793 TUP: cskic registered
l 12.4624563 Initializing NVMe netlink socket
l 12.4666623 NET: Registered protocol family 10
l 12.4720623 NET: Registered protocol family 17
l 12.4720440 usb 1-6:1: new high-speed USB device number 4 using ohci_hcd
l 12.4810080 nfs_gss: NFS GSS support
l 12.4772793 intel_x86: Intel SRST SS allocation detected
l 12.5056363 sdcmocade: sfp-0x50054, pf-0x00, revision-0x200004d
l 12.5124880 sdcmocade: Mirocode Update Driver: v2.01 (Copyright © 2011, Peter Grech)
```



Passaggio 6. Configurare la rete nel sottomenu CONFIG_NETWORK.



Passaggio 7. Accedere al portale AMP OPadmin con la password del passaggio 5.



Password Required

Authentication is required to administer your AMP for Endpoints Private Cloud device. The password can be found on the device console of your Private Cloud device.

This site is best viewed in: Internet Explorer 10+, Firefox 14+, Safari 6+, or Chrome 20+

[Password Recovery](#)

Support

Passaggio 8. Utilizzare SFTP o SCP per scaricare il backup dal server remoto a /data/.



Installation Options

Only the License section can be altered after installation.

- Install or Restore ✓
- License ✓
- Welcome ✓
- Deployment Mode ✓
- Standalone Operation ✓
- AMP for Endpoints Console Account ✓
- Hardware Configuration

Configuration

- Network ✓
- Date and Time ✓
- Certificate Authorities ✓
- Upstream Proxy Server ✓
- Email ✓
- Notifications ✓
- Backup ✓
- SSH ✓
- Syslog ✓
- Updates ✓

Services

- Authentication ✓
- AMP for Endpoints Console ✓
- Disposition Server ✓
- Disposition Server ✓
- Extended Protocol ✓
- Disposition Update ✓
- Service ✓
- Preprocessor Management Center ✓

Other

- Review and Install

Start Installation

Install or Restore

Either perform a clean installation or select a location to restore your device from. When restoring you will have the option to edit your configuration before restore proceeds.

Preparing Restore

Your restore file is being processed, please wait.

- + Adding mongo_event_consumer account.
 - + Running startup script to generate new password. Generating a random password for mongo_event_consumer
 - + Removing the .rpmnew file
 - + Removing event_mongo_store service
 - + Adding firehose_cassandra account.
 - + Running startup script to generate new password. Generating a random password for firehose_cassandra
- Checking for bios and lmc updates. This may take some time. If an update is available and the update is successful, you will be asked to reboot the box.

Clean Installation

Start

Restore

Local Remote **Upload**

Restore a recovery file using your browser. Note that this method is only recommended for small recovery files (less than 20MB).


Choose Restore File

Start

Restore

Local Remote Upload

Restore from a backup file present on the device. Files will be extracted to the directory your backup is located in during the restore process; for this reason, it is recommended that the file be located in the /data directory.

 /data/amp.bak

Passaggio 9. Confermare la configurazione hardware, fare clic su **Avanti** > **Avvia installazione**.

AMP for Endpoints Private Cloud Administration Portal Help Logout

Configuration Operations Status Integrations Support Standalone

Hardware Configuration

	Installed	Minimum Required
CPU Cores	48	8
Memory	1510 GB	128 GB

[Next >](#)

Installation Options
Only the License section can be altered after installation.

- > Install or Restore ✓
- > License ✓
- > Welcome ✓
- > Deployment Mode ✓
- > Standalone Operation ✓
- > AMP for Endpoints Console ✓
- > Account ✓
- > **Hardware Configuration**

Configuration

- > Network ✓
- > Date and Time ✓
- > Certificate Authorities ✓
- > Upstream Proxy Server ✓
- > Email ✓
- > Notifications ✓
- > Backup ✓
- > SSH ✓
- > Syslog ✓
- > Updates ✓

Services

- > Authentication ✓
- > AMP for Endpoints Console ✓
- > Disposition Server ✓
- > Disposition Server ✓
- > Extended Protocol ✓
- > Disposition Update ✓
- > Service ✓
- > Finpower Management Center ✓

Other

- > Review and Install

[▶ Start Installation](#)

Installation Options

Only the License section can be altered after installation.

- > Install or Restore ✓
- > License ✓
- > Welcome ✓
- > Deployment Mode ✓
- > Standalone Operation ✓
- > AMP for Endpoints Console Account ✓
- > Hardware Configuration ✓

Configuration

- > Network ✓
- > Date and Time ✓
- > Certificate Authorities ✓
- > Upstream Proxy Server ✓
- > Email ✓
- > Notifications ✓
- > Backup ✓
- > SSH ✓
- > Syslog ✓
- > Updates ✓

Services

- > Authentication ✓
- > AMP for Endpoints Console ✓
- > Disposition Server ✓
- > Disposition Server ✓
- > Extended Protocol ✓
- > Disposition Update ✓
- > Service ✓
- > Firewall Management Center ✓

Other

- > Review and Install

Start Installation

Review and Install

Review the following information and, once you are satisfied with your configuration settings, begin the installation. Note that the configuration shown below cannot be altered after installation.

Restore Ready

Your configuration has been restored, and your data will be restored during installation. You may review and edit some parts of your configuration before proceeding with installation.

Installation Type ✎ Edit

Standalone Connected

- Requires an Internet Connection
- Communication with AMP for Endpoints Connectors managed by this device are needed.
- Disposition queries are handled by the Private Cloud device.
- Content updates contain TETRA definitions as well as file disposition information.
- Updates may be downloaded separately or automatically on this device.

AMP for Endpoints Console Account ✎ Edit

Name	Wojciech Cecot
Email Address	wcecot@cisco.com
Business Name	Cisco - wcecot

Recovery

When restoring from a backup, a recovery image is not required.

Start Installation

The device is installing...

Please wait for this page to redirect you. Refreshing manually might cause problems. Installation time is typically under 20 minutes.

State	Started	Finished	Duration
▶ Pending	Tue May 12 2020 10:05:17 GMT+0200 (Central European Summer Time) 0 day, 0 hour, 0 minute, 46 seconds ago	⊙ Please wait...	⊙ Please wait...

Your device will need to be rebooted after this operation.

Reboot

Output

```

[2020-05-12T08:05:18+00:00] DEBUG: Loading plugin at /opt/chef/embedded/lib/ruby/gems/2.3.0/gems/shai-8.20.0/lib/shai/plugins/ruby.rb
[2020-05-12T08:05:18+00:00] DEBUG: Loading plugin at /opt/chef/embedded/lib/ruby/gems/2.3.0/gems/shai-8.20.0/lib/shai/plugins/network.rb
[2020-05-12T08:05:18+00:00] DEBUG: Loading plugin at /opt/chef/embedded/lib/ruby/gems/2.3.0/gems/shai-8.20.0/lib/shai/plugins/powershell.rb
[2020-05-12T08:05:18+00:00] DEBUG: Loading plugin at /opt/chef/embedded/lib/ruby/gems/2.3.0/gems/shai-8.20.0/lib/shai/plugins/os.rb
[2020-05-12T08:05:18+00:00] DEBUG: Plugin Kernel: ran 'uname -s' and returned 0
[2020-05-12T08:05:18+00:00] DEBUG: Plugin Kernel: ran 'uname -r' and returned 0
[2020-05-12T08:05:18+00:00] DEBUG: Plugin Kernel: ran 'uname -v' and returned 0
[2020-05-12T08:05:18+00:00] DEBUG: Plugin Kernel: ran 'uname -m' and returned 0
[2020-05-12T08:05:18+00:00] DEBUG: Plugin Kernel: ran 'uname -p' and returned 0
[2020-05-12T08:05:18+00:00] DEBUG: Plugin Kernel: ran 'uname -o' and returned 0
[2020-05-12T08:05:18+00:00] DEBUG: Plugin Kernel: ran 'env lscod' and returned 0
[2020-05-12T08:05:18+00:00] DEBUG: Plugin LSB: ran 'lsb_release -a' and returned 0
    
```

Download Output

Passaggio 10. Dopo il ripristino, è necessario riavviare.

The device is installing...

Please wait for this page to redirect you. Refreshing manually might cause problems. Installation time is typically under 20 minutes.

State	Started	Finished	Duration
✔ Successful	Tue May 12 2020 10:05:17 GMT+0200 (Central European Summer Time) 0 day, 0 hour, 34 minutes, 19 seconds ago	Tue May 12 2020 10:22:17 GMT+0200 (Central European Summer Time) 0 day, 0 hour, 17 minutes, 19 seconds ago	0 day, 0 hour, 16 minutes, 59 seconds

Your device will need to be rebooted after this operation.

Reboot

Output

```
[2020-05-12T00:22:15+00:00] INFO: Skipping cleanup of resource table files and links
[2020-05-12T00:22:15+00:00] INFO: Running report handlers
[2020-05-12T00:22:15+00:00] INFO: Report handlers complete
[2020-05-12T00:22:15+00:00] DEBUG: Server doesn't support resource history, skipping resource report.
[2020-05-12T00:22:15+00:00] DEBUG: Audit Reports are disabled, skipping sending reports.
[2020-05-12T00:22:15+00:00] DEBUG: Forked instance successfully reaped (pid: 97568)
[2020-05-12T00:22:15+00:00] DEBUG: Exiting
Sending system notification (this may take some time).
Running retryable command, 40 retries remaining.

=====
Chef run finished successfully
=====

Installation has finished successfully! Please reboot!
=====
```

Download Output

Verifica

Dopo aver riavviato l'accessorio, verificare che entrambi i portali funzionino correttamente. Provare ad aprire il portale OPadmin e Console nel browser Web. L'accesso a entrambi i portali richiede pochi minuti.

Risoluzione dei problemi

Nel caso del processo di ripristino del backup, la password per i portali OPadmin e Console è la stessa di prima. In caso contrario, è necessario utilizzare le impostazioni della procedura guidata.