

# Configuración de Cisco VPN Client 3.x para Windows a IOS con Autenticación Extendida Local

## Contenido

[Introducción](#)

[Antes de comenzar](#)

[Convenciones](#)

[Prerequisites](#)

[Componentes Utilizados](#)

[Configurar](#)

[Diagrama de la red](#)

[Configuraciones](#)

[Habilitación de la tunelización dividida](#)

[Verificación](#)

[Troubleshoot](#)

[Registros del cliente](#)

[Información Relacionada](#)

## Introducción

Este documento demuestra cómo configurar una conexión entre un router que usa autenticación ampliada local y Cisco VPN Client. Las versiones de Cisco IOS® Software 12.2(15)T2 y superiores soportan conexiones desde Cisco VPN Client 3.x. El cliente VPN 3.x utiliza la política Diffie Hellman (DH) de grupo 2. El comando `isakmp policy # group 2` permite conectarse a los clientes 3.x.

Para obtener información sobre la configuración de estos dispositivos mediante Cisco Secure VPN Client 1.1, vea [Configuración de Cisco Secure VPN Client 1.1 para Windows a IOS con Autenticación Extendida Local](#).

Consulte [Ejemplo de Configuración de Túnel IPSec entre el Router IOS y Cisco VPN Client 4.x para Windows con la Autenticación de Usuario TACACS+](#) para obtener más información sobre el escenario en el que la autenticación de usuario ocurre externamente con el protocolo TACACS+.

Refiérase a [Configuración de IPSec entre un Cisco IOS Router y un Cisco VPN Client 4.x para Windows Usando RADIUS para la Autenticación de Usuario](#) para obtener más información sobre el escenario donde la autenticación de usuario ocurre externamente con el protocolo RADIUS.

## Antes de comenzar

## Convenciones

Para obtener más información sobre las convenciones del documento, consulte [Convenciones de Consejos Técnicos de Cisco](#).

## Prerequisites

Antes de utilizar esta configuración, asegúrese de que cumple con los siguientes requisitos previos:

- un conjunto de direcciones que se asignarán a IP Security (IPSec)
- un usuario local en el router IOS con **cisco** como nombre y **cisco** como contraseña
- un grupo llamado **3000clients** con la contraseña **cisco123**

## Componentes Utilizados

La información que contiene este documento se basa en las versiones de software y hardware indicadas a continuación.

- un router 3640 que ejecuta 12.2(15)T2
- Cliente Cisco VPN para Windows versión 3.5 (se debería admitir sin problemas cualquier cliente VPN 3.x)

El resultado del comando show version en el router se muestra a continuación.

```
3640#show version
Cisco Internetwork Operating System Software
IOS (tm) 3600 Software (C3640-JK903S-M), Version 12.2(15)T2,
  RELEASE SOFTWARE (fc2)
TAC Support: http://www.cisco.com/tac
Copyright (c) 1986-2003 by cisco Systems, Inc.
Compiled Wed 30-Apr-03 05:42 by nmasa
Image text-base: 0x60008950, data-base: 0x6202E000

ROM: System Bootstrap, Version 11.1(20)AA2,
  EARLY DEPLOYMENT RELEASE SOFTWARE (fc1)

3640 uptime is 21 hours, 29 minutes
System returned to ROM by reload
System image file is "flash:c3640-jk9o3s-mz.122-15.T2.bin"
```

This product contains cryptographic features and is subject to United States and local country laws governing import, export, transfer and use. Delivery of Cisco cryptographic products does not imply third-party authority to import, export, distribute or use encryption. Importers, exporters, distributors and users are responsible for compliance with U.S. and local country laws. By using this product you agree to comply with applicable laws and regulations. If you are unable to comply with U.S. and local laws, return this product immediately.

A summary of U.S. laws governing Cisco cryptographic products may be found at:  
<http://www.cisco.com/wvl/export/crypto/tool/stqrg.html>

If you require further assistance please contact us by sending email to [export@cisco.com](mailto:export@cisco.com).

```
cisco 3640 (R4700) processor (revision 0x00)
  with 126976K/4096K bytes of memory.
Processor board ID 22789386
R4700 CPU at 100Mhz, Implementation 33, Rev 1.0
Bridging software.
X.25 software, Version 3.0.0.
SuperLAT software (copyright 1990 by Meridian Technology Corp).
TN3270 Emulation software.
2 Ethernet/IEEE 802.3 interface(s)
4 Serial network interface(s)
DRAM configuration is 64 bits wide with parity disabled.
125K bytes of non-volatile configuration memory.
32768K bytes of processor board System flash (Read/Write)
16384K bytes of processor board PCMCIA Slot0 flash (Read/Write)

Configuration register is 0x102
```

3640#

La información que se presenta en este documento se originó a partir de dispositivos dentro de un ambiente de laboratorio específico. All of the devices used in this document started with a cleared (default) configuration. Si la red está funcionando, asegúrese de haber comprendido el impacto que puede tener un comando antes de ejecutarlo.

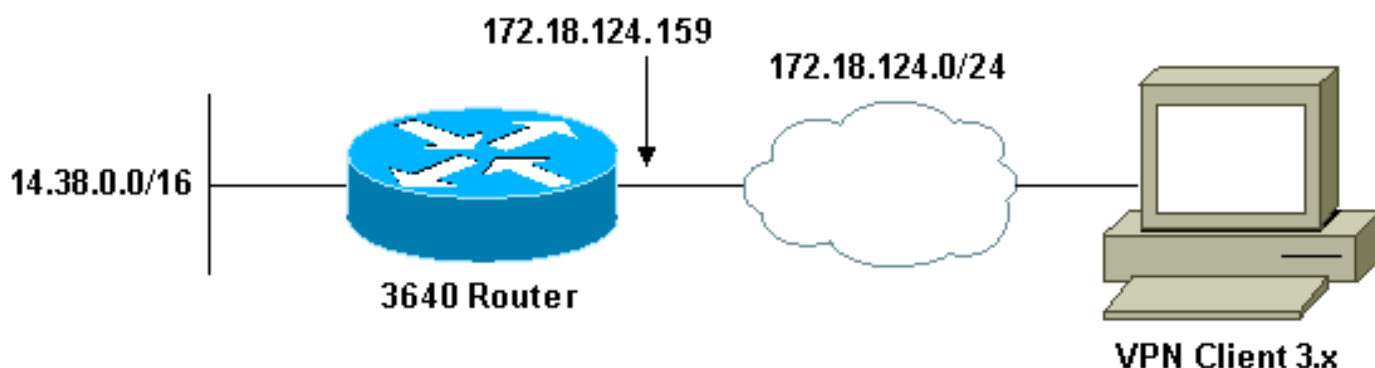
## Configurar

En esta sección encontrará la información para configurar las funciones descritas en este documento.

**Nota:** Para encontrar información adicional sobre los comandos usados en este documento, utilice la [Command Lookup Tool](#) ([sólo](#) clientes registrados) .

## Diagrama de la red

Este documento utiliza la instalación de red que se muestra en el siguiente diagrama.



## Configuraciones

Este documento usa las configuraciones detalladas a continuación.

- [Configuración del router 3640](#)

- [Configuración del cliente VPN 3.x](#)

## [Configuración del router 3640](#)

### Router 3640

```
3640#show run
Building configuration...

Current configuration : 1884 bytes
!
version 12.2
service timestamps debug uptime
service timestamps log uptime
no service password-encryption
!
hostname 3640
!
!--- Enable Authentication, Authorizing and Accounting
(AAA) !--- for user authentication and group
authorization. aaa new-model
!
!--- To enable X-Auth for user authentication, !---
enable the aaa authentication commands.

aaa authentication login userauthen local

!--- To enable group authorization, !--- enable the aaa
authorization commands.

aaa authorization network groupauthor local
!
!--- For local authentication of the IPsec user, !---
create the user with password. username cisco password 0
cisco
!
ip subnet-zero
!
!
!
ip audit notify log
ip audit po max-events 100
!
!--- Create an Internet Security Association and !---
Key Management Protocol (ISAKMP) policy for Phase 1
negotiations. crypto isakmp policy 3
encr 3des
authentication pre-share
group 2
!
!--- Create a group that will be used to specify the !--
- Windows Internet Naming Service (WINS) and !--- Domain
Naming Service (DNS) server addresses to the client, !--
- along with the pre-shared key for authentication.
crypto isakmp client configuration group 3000client
key cisco123
dns 14.1.1.10
wins 14.1.1.20
domain cisco.com
pool ippool
!
```

```
!--- Create the Phase 2 Policy for actual data
encryption. crypto ipsec transform-set myset esp-3des
esp-sha-hmac
!
!--- Create a dynamic map and !--- apply the transform
set that was created above. crypto dynamic-map dynmap 10
set transform-set myset
!
!--- Create the actual crypto map, !--- and apply the
aaa lists that were created earlier. crypto map
clientmap client authentication list userauthen
crypto map clientmap isakmp authorization list
groupauthor
crypto map clientmap client configuration address
respond
crypto map clientmap 10 ipsec-isakmp dynamic dynmap
!
!
fax interface-type fax-mail
mta receive maximum-recipients 0
!
!
!
!--- Apply the crypto map on the outside interface.
interface Ethernet0/0 ip address 172.18.124.159
255.255.255.0
half-duplex
crypto map clientmap
!
interface Serial0/0
no ip address
shutdown
!
interface Ethernet0/1
ip address 14.38.100.201 255.255.0.0
no keepalive
half-duplex
!
interface Serial1/0
no ip address
shutdown
!
interface Serial1/1
no ip address
shutdown
!
interface Serial1/2
no ip address
shutdown
!
interface Serial1/3
no ip address
shutdown
!
interface Serial1/4
no ip address
shutdown
!
interface Serial1/5
no ip address
shutdown
!
interface Serial1/6
no ip address
```

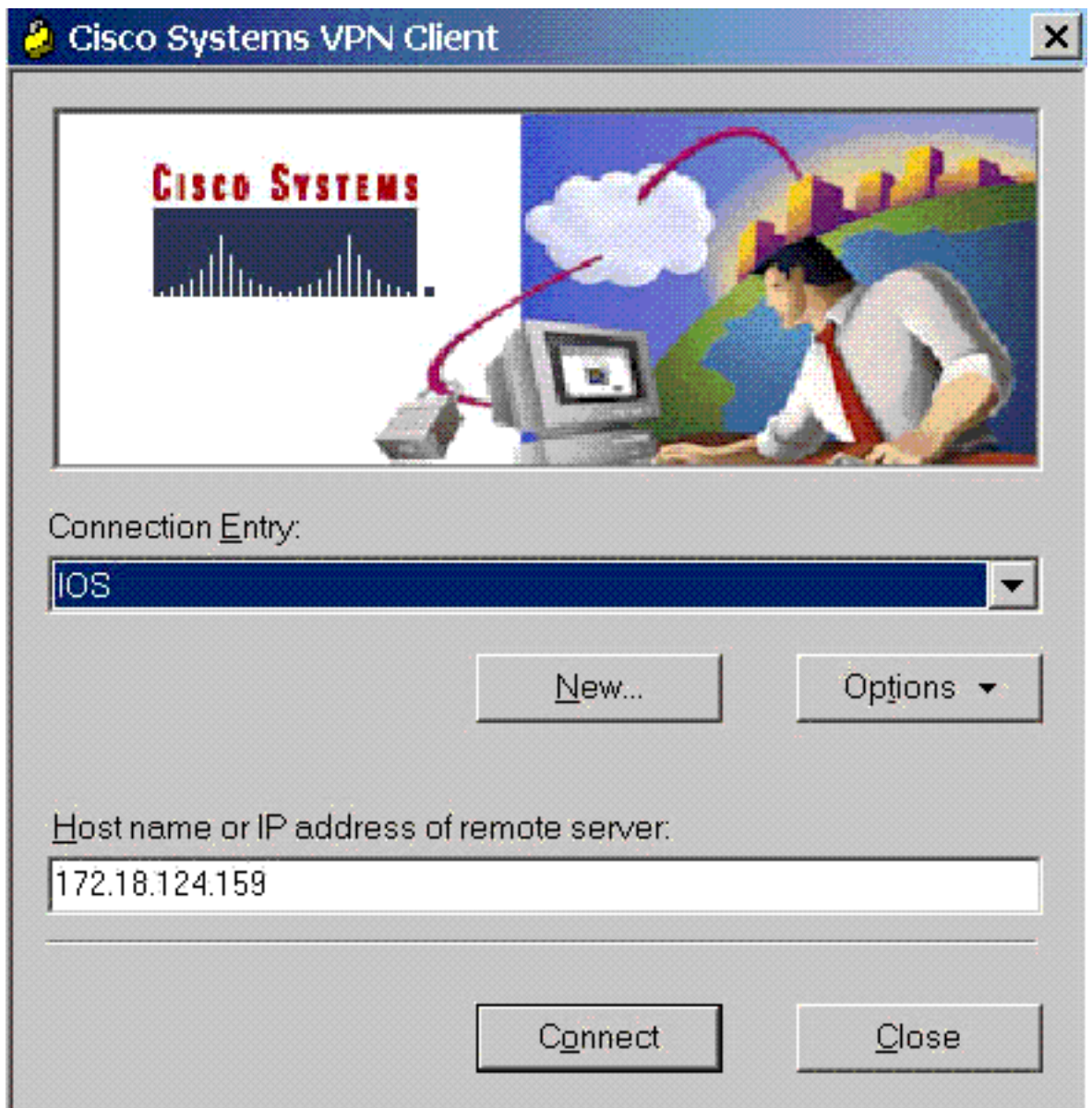
```
shutdown
!
interface Serial1/7
  no ip address
  shutdown
!
!--- Create a pool of addresses to be assigned to the
VPN Clients. ip local pool ippool 14.1.1.100 14.1.1.200
ip classless
ip route 0.0.0.0 0.0.0.0 172.18.124.1
ip http server
ip pim bidir-enable
!
!
!
!
call rsvp-sync
!
!
mgcp profile default
!
dial-peer cor custom
!
!
!
!
!
line con 0
  exec-timeout 0 0
line aux 0
line vty 0 4
!
!
end

3640#
```

### [Configuración del cliente VPN 3.x](#)

Esta sección muestra cómo configurar VPN Client 3.x.

1. Inicie VPN Client y luego haga clic en **New** para crear una nueva



conexión.

2. Cuando se le indique, asigne un nombre a su entrada. Si lo desea, también puede ingresar una descripción. Haga clic en Next (Siguiete) cuando haya terminado.

## New Connection Entry Wizard



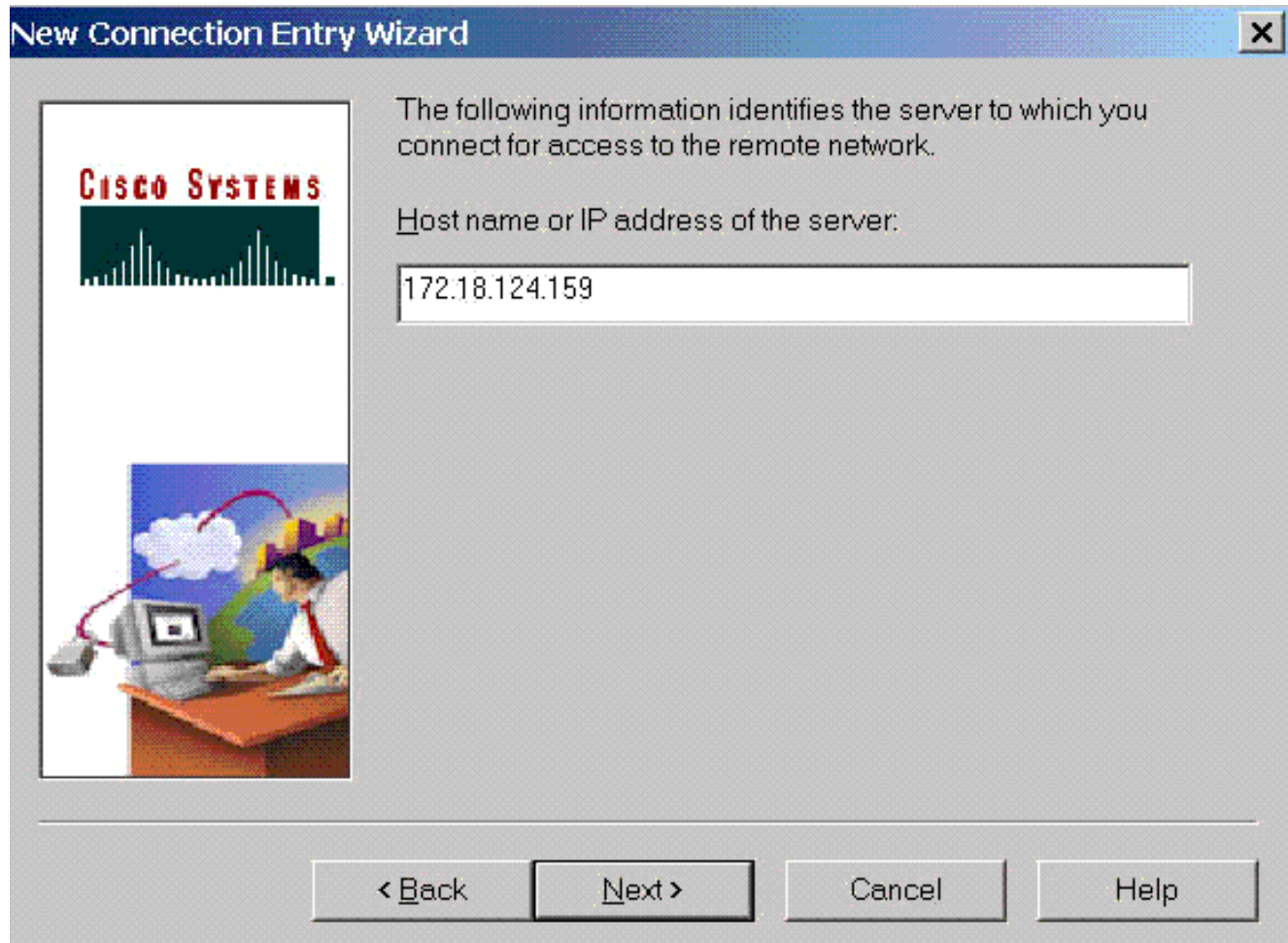
The VPN Client lets you create secure connections to remote networks. This wizard helps you create a connection entry for connecting to a specific remote network.

Name of the new connection entry:

Description of the new connection entry (optional):

3. Introduzca la dirección IP de la interfaz pública del router. Haga clic en Next (Siguiente) cuando haya terminado.

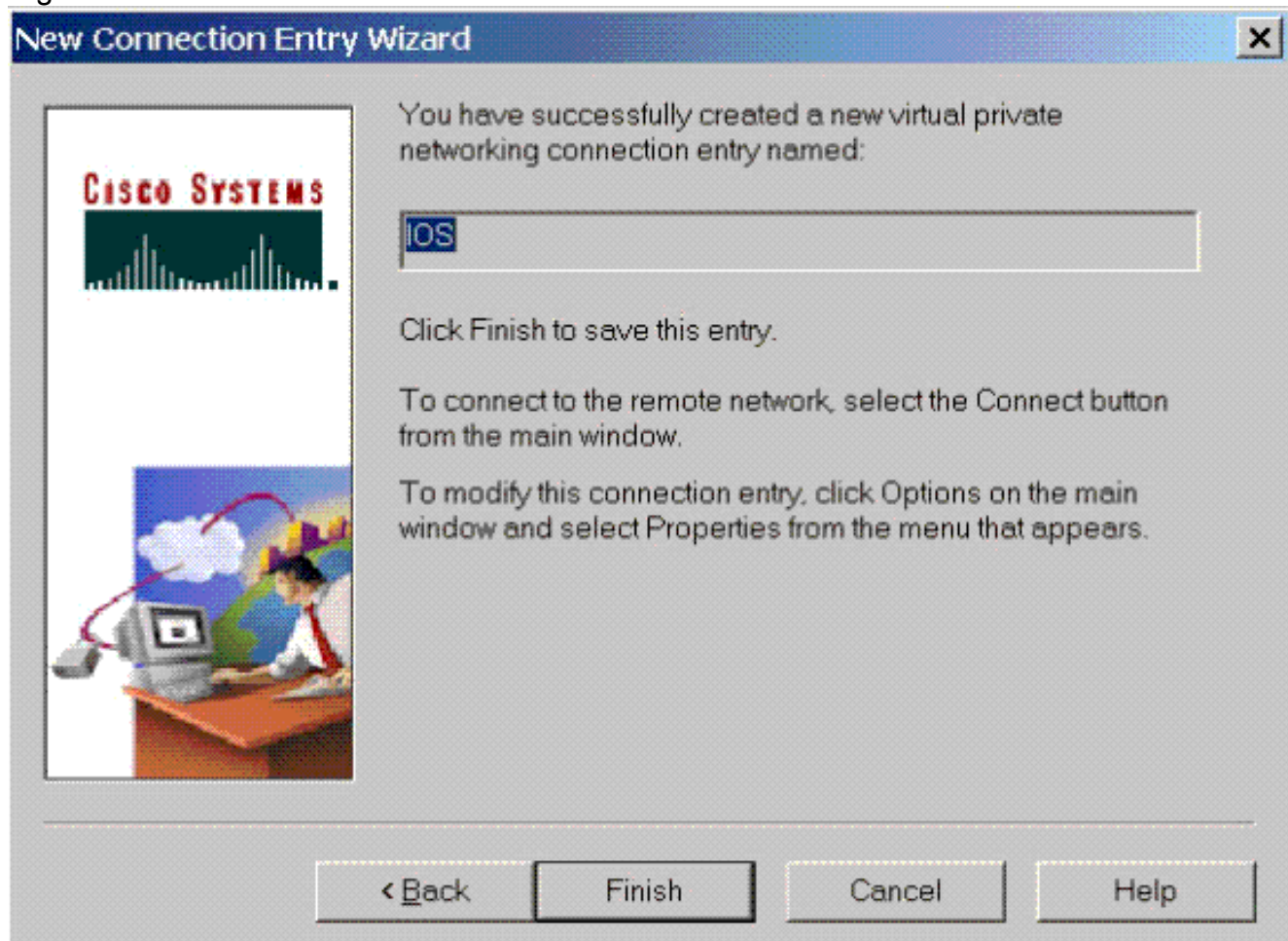




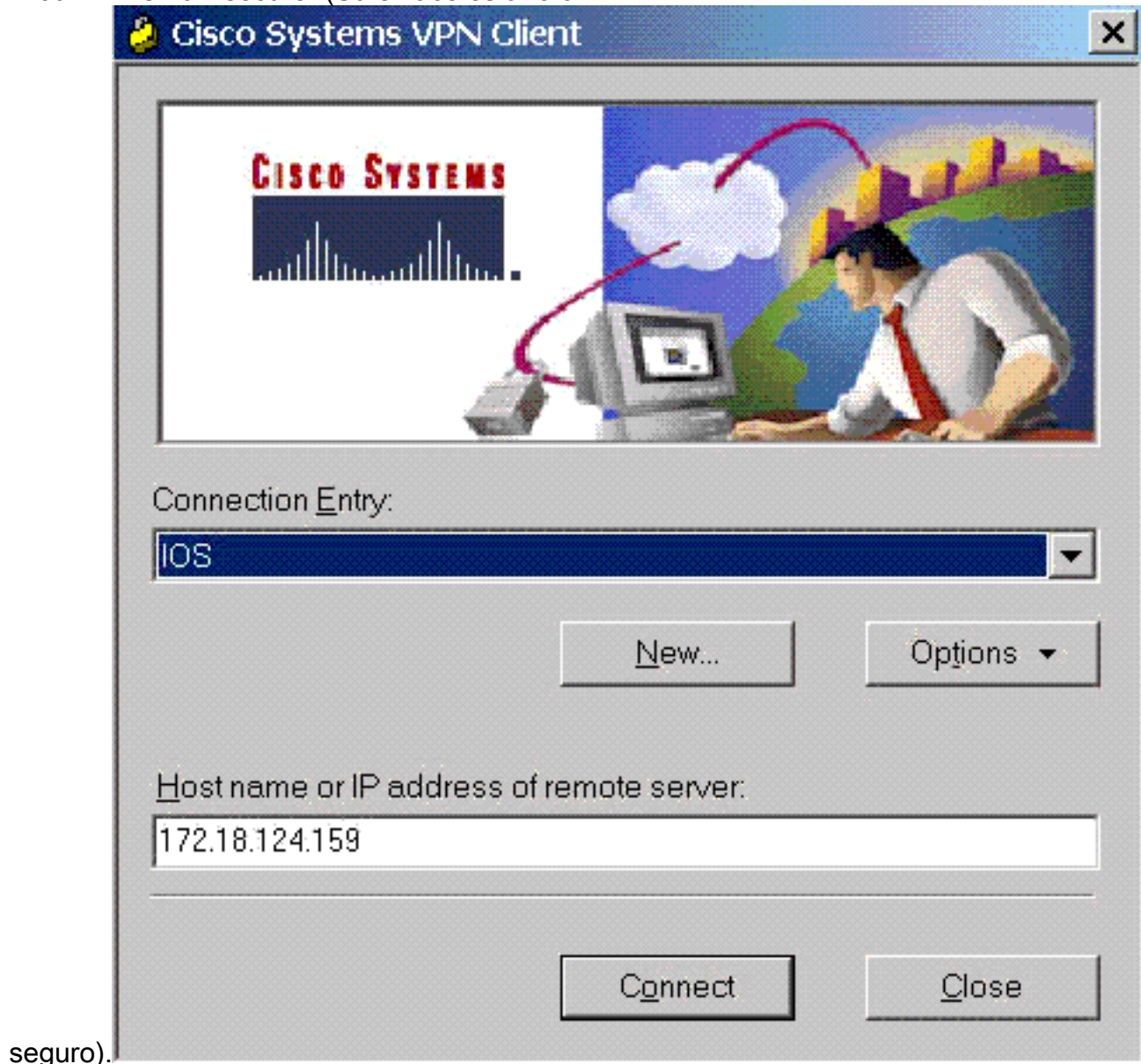
4. En Group Access Information (Información de acceso de grupo), ingrese el nombre y contraseña del grupo. El siguiente ejemplo muestra un grupo con el nombre "3000client" y la contraseña "cisco123". Confirme la contraseña y, a continuación, haga clic en **Siguiente** para continuar.



5. Haga clic en Finish (Finalizar) para guardar el perfil en el registro.



6. Haga clic en Connect (Conectar) para conectarse al router. La ventana mostrará los siguientes mensajes: "Negotiating security profiles" (Negociación de perfiles de seguridad) y "Your link is now secure" (Su enlace es ahora



### [Habilitación de la tunelización dividida](#)

Para habilitar la tunelización dividida para las conexiones VPN, asegúrese de que tiene una lista de acceso configurada en el router. En el siguiente ejemplo, el comando **access-list 108** se asocia al grupo para fines de tunelización dividida y el túnel se forma a la red 14.38.X.X /16. El tráfico fluye sin cifrar a dispositivos que no se encuentran en la lista de acceso 108 (por ejemplo, Internet).

```
access-list 108 permit ip 14.38.0.0 0.0.255.255
 14.1.1.0 0.0.0.255
```

A continuación, aplique la lista de acceso a las propiedades del grupo.

```
crypto isakmp client configuration group 3000client
key cisco123
dns 14.38.100.10
wins 14.38.100.20
domain cisco.com
pool ippool
acl 108
```

## Verificación

En esta sección encontrará información que puede utilizar para confirmar que su configuración esté funcionando correctamente.

La herramienta [Output Interpreter](#) (sólo para clientes registrados) permite utilizar algunos comandos “show” y ver un análisis del resultado de estos comandos.

```
3640#show crypto isakmp sa
dst          src          state      conn-id    slot
172.18.124.159 172.18.124.96 QM_IDLE      3          0
```

```
3640#show crypto ipsec sa
interface: Ethernet0/0
Crypto map tag: clientmap, local addr. 172.18.124.96
```

```
protected vrf:
local ident (addr/mask/prot/port): (0.0.0.0/0.0.0.0/0/0)
remote ident (addr/mask/prot/port):
  (14.1.1.106/255.255.255.255/0/0)
current_peer: 172.18.124.159:500
PERMIT, flags={}
#pkts encaps: 6, #pkts encrypt: 6, #pkts digest 6
#pkts decaps: 6, #pkts decrypt: 6, #pkts verify 6
#pkts compressed: 0, #pkts decompressed: 0
#pkts not compressed: 0, #pkts compr. failed: 0
#pkts not decompressed: 0, #pkts decompress failed: 0
#send errors 0, #recv errors 0
```

```
local crypto endpt.: 172.18.124.96,
  remote crypto endpt.: 172.18.124.159
path mtu 1500, media mtu 1500
current outbound spi: D026E0BA
```

```
inbound esp sas:
spi: 0x84E901C8(2229862856)
transform: esp-3des esp-md5-hmac ,
in use settings ={Tunnel, }
slot: 0, conn id: 2002, flow_id: 3, crypto map: clientmap
sa timing: remaining key lifetime (k/sec): (4450694/3532)
IV size: 8 bytes
replay detection support: Y
```

```
inbound ah sas:
```

```
inbound pcp sas:
```

```
outbound esp sas:
spi: 0xD026E0BA(3492208826)
transform: esp-3des esp-md5-hmac ,
in use settings ={Tunnel, }
```

slot: 0, conn id: 2003, flow\_id: 4, crypto map: clientmap  
sa timing: remaining key lifetime (k/sec): (4450699/3532)  
IV size: 8 bytes  
replay detection support: Y

outbound ah sas:

outbound pcp sas:

protected vrf:

local ident (addr/mask/prot/port):  
(172.18.124.159/255.255.255.255/0/0)

remote ident (addr/mask/prot/port):  
(14.1.1.105/255.255.255.255/0/0)

current\_peer: 172.18.124.159:500

PERMIT, flags={}

**#pkts encaps: 6, #pkts encrypt: 6, #pkts digest 6**

**#pkts decaps: 6, #pkts decrypt: 6, #pkts verify 6**

#pkts compressed: 0, #pkts decompressed: 0

#pkts not compressed: 0, #pkts compr. failed: 0

#pkts not decompressed: 0, #pkts decompress failed: 0

#send errors 0, #recv errors 0

local crypto endpt.: 172.18.124.159,  
remote crypto endpt.: **172.18.124.96**

path mtu 1500, media mtu 1500

current outbound spi: E8E398F8

inbound esp sas:

spi: 0xDFE24DFC(3756150268)

transform: esp-3des esp-md5-hmac ,

in use settings ={Tunnel, }

slot: 0, conn id: 2000, flow\_id: 1, crypto map: clientmap

sa timing: remaining key lifetime (k/sec): (4572253/3530)

IV size: 8 bytes

replay detection support: Y

inbound ah sas:

inbound pcp sas:

outbound esp sas:

spi: 0xE8E398F8(3907229944)

transform: esp-3des esp-md5-hmac ,

in use settings ={Tunnel, }

slot: 0, conn id: 2001, flow\_id: 2, crypto map: clientmap

sa timing: remaining key lifetime (k/sec): (4572253/3528)

IV size: 8 bytes

replay detection support: Y

outbound ah sas:

outbound pcp sas:

3640#**show crypto engine connections active**

ID	Interface	IP-Address	State	Algorithm	Encrypt	Decrypt
3	Ethernet0/0	172.18.124.159	set	HMAC_MD5+3DES_56_C	0	0
2000	Ethernet0/0	172.18.124.159	set	HMAC_MD5+3DES_56_C	0	6
2001	Ethernet0/0	172.18.124.159	set	HMAC_MD5+3DES_56_C	6	0
2004	Ethernet0/0	172.18.124.159	set	HMAC_MD5+3DES_56_C	0	6
2005	Ethernet0/0	172.18.124.159	set	HMAC_MD5+3DES_56_C	6	0



# Troubleshoot

En esta sección encontrará información que puede utilizar para solucionar problemas de configuración.

```
3640#debug crypto ipsec
```

```
Crypto IPSEC debugging is on
```

```
3640#debug crypto isakmp
```

```
Crypto ISAKMP debugging is on
```

```
3640#
```

```
ISAKMP (0:0): received packet from 172.18.124.96
```

```
dpport 500 sport 500 Global (N) NEW SA
```

```
ISAKMP: Found a peer struct for 172.18.124.96, peer port 500
```

```
ISAKMP: Locking peer struct 0x63B2EAE4, IKE refcount 1 for
```

```
crypto_ikmp_config_initialize_sa
```

```
ISAKMP (0:0): (Re)Setting client xauth list and state
```

```
ISAKMP: local port 500, remote port 500
```

```
ISAKMP: insert sa successfully sa = 63972310
```

```
ISAKMP (0:1): processing SA payload. message ID = 0
```

```
ISAKMP (0:1): processing ID payload. message ID = 0
```

```
ISAKMP (0:1): peer matches *none* of the profiles
```

```
ISAKMP (0:1): processing vendor id payload
```

```
ISAKMP (0:1): vendor ID seems Unity/DPD but major 215 mismatch
```

```
ISAKMP (0:1): vendor ID is XAUTH
```

```
ISAKMP (0:1): processing vendor id payload
```

```
ISAKMP (0:1): vendor ID is DPD
```

```
ISAKMP (0:1): processing vendor id payload
```

```
ISAKMP (0:1): vendor ID seems Unity/DPD but major 123 mismatch
```

```
ISAKMP (0:1): vendor ID is NAT-T v2
```

```
ISAKMP (0:1): processing vendor id payload
```

```
ISAKMP (0:1): vendor ID seems Unity/DPD but major 194 mismatch
```

```
ISAKMP (0:1): processing vendor id payload
```

```
ISAKMP (0:1): vendor ID is Unity
```

```
ISAKMP (0:1) Authentication by xauth preshared
```

```
ISAKMP (0:1): Checking ISAKMP transform 1 against priority 1 policy
```

```
ISAKMP: encryption AES-CBC
```

```
ISAKMP: hash SHA
```

```
ISAKMP: default group 2
```

```
ISAKMP: auth XAUTHInitPreShared
```

```
ISAKMP: life type in seconds
```

```
ISAKMP: life duration (VPI) of 0x0 0x20 0xC4 0x9B
```

```
ISAKMP: keylength of 256
```

```
ISAKMP (0:1): Encryption algorithm offered does not match policy!
```

```
ISAKMP (0:1): atts are not acceptable. Next payload is 3
```

```
ISAKMP (0:1): Checking ISAKMP transform 2 against priority 1 policy
```

```
ISAKMP: encryption AES-CBC
```

```
ISAKMP: hash MD5
```

```
ISAKMP: default group 2
```

```
ISAKMP: auth XAUTHInitPreShared
```

```
ISAKMP: life type in seconds
```

```
ISAKMP: life duration (VPI) of 0x0 0x20 0xC4 0x9B
```

```
ISAKMP: keylength of 256
```

```
ISAKMP (0:1): Encryption algorithm offered does not match policy!
```

```
ISAKMP (0:1): atts are not acceptable. Next payload is 3
```

```
ISAKMP (0:1): Checking ISAKMP transform 3 against priority 1 policy
```

```
ISAKMP: encryption AES-CBC
```

```
ISAKMP: hash SHA
```

```
ISAKMP: default group 2
```

```
ISAKMP: auth pre-share
```

ISAKMP: life type in seconds  
ISAKMP: life duration (VPI) of 0x0 0x20 0xC4 0x9B  
ISAKMP: keylength of 256  
ISAKMP (0:1): Encryption algorithm offered does not match policy!  
ISAKMP (0:1): atts are not acceptable. Next payload is 3  
ISAKMP (0:1): Checking ISAKMP transform 4 against priority 1 policy  
ISAKMP: encryption AES-CBC  
ISAKMP: hash MD5  
ISAKMP: default group 2  
ISAKMP: auth pre-share  
ISAKMP: life type in seconds  
ISAKMP: life duration (VPI) of 0x0 0x20 0xC4 0x9B  
ISAKMP: keylength of 256  
ISAKMP (0:1): Encryh of 128  
ISAKMP (0:1): Encryption algorithm offered does not match policy!  
ISAKMP (0:1): atts are not acceptable. Next payload is 3  
ISAKMP (0:1): Checking ISAKMP transform 7 against priority 1 policy  
ISAKMP: encryption AES-CBC  
ISAKMP: hash SHA  
ISAKMP: default group 2  
ISAKMP: auth pre-share  
ISAKMP: life type in seconds  
ISAKMP: life duration (VPI) of 0x0 0x20 0xC4 0x9B  
ISAKMP: keylength of 128  
ISAKMP (0:1): Encryption algorithm offered does not match policy!  
ISAKMP (0:1): atts are not acceptable. Next payload is 3  
ISAKMP (0:1): Checking ISAKMP transform 8 against priority 1 policy  
ISAKMP: encryption AES-CBC  
ISAKMP: hash MD5  
ISAKMP: default group 2  
ISAKMP: auth pre-share  
ISAKMP: life type in seconds  
ISAKMP: life duration (VPI) of 0x0 0x20 0xC4 0x9B  
ISAKMP: keylength of 128  
ISAKMP (0:1): Encryption algorithm offered does not match policy!  
ISAKMP (0:1): atts are not acceptable. Next payload is 3  
ISAKMP (0:1): Checking ISAKMP transform 9 against priority 1 policy  
ISAKMP: encryption 3DES-CBC  
ISAKMP: hash SHA match policy!  
ISAKMP (0:1): atts are not acceptable. Next payload is 3  
ISAKMP (0:1): Checking ISAKMP transform 5 against priority 1 policy  
ISAKMP: encryption AES-CBC  
ISAKMP: hash SHA  
ISAKMP: default group 2  
ISAKMP: auth XAUTHInitPreShared  
ISAKMP: life type in seconds  
ISAKMP: life duration (VPI) of 0x0 0x20 0xC4 0x9B  
ISAKMP: keylength of 128  
ISAKMP (0:1): Encryption algorithm offered does not match policy!  
ISAKMP (0:1): atts are not acceptable. Next payload is 3  
ISAKMP (0:1): Checking ISAKMP transform 6 against priority 1 policy  
ISAKMP: encryption AES-CBC  
ISAKMP: hash MD5  
ISAKMP: default group 2  
ISAKMP: auth XAUTHInitPreShared  
ISAKMP: life type in seconds  
ISAKMP: life duration (VPI) of 0x0 0x20 0xC4 0x9B  
ISAKMP: keylength  
ISAKMP: default group 2  
ISAKMP: auth XAUTHInitPreShared  
ISAKMP: life type in seconds  
ISAKMP: life duration (VPI) of 0x0 0x20 0xC4 0x9B  
ISAKMP (0:1): Encryption algorithm offered does not match policy!  
ISAKMP (0:1): atts are not acceptable. Next payload is 3

ISAKMP (0:1): Checking ISAKMP transform 10 against priority 1 policy  
ISAKMP: encryption 3DES-CBC  
ISAKMP: hash MD5  
ISAKMP: default group 2  
ISAKMP: auth XAUTHInitPreShared  
ISAKMP: life type in seconds  
ISAKMP: life duration (VPI) of 0x0 0x20 0xC4 0x9B  
ISAKMP (0:1): Encryption algorithm offered does not match policy!  
ISAKMP (0:1): atts are not acceptable. Next payload is 3  
ISAKMP (0:1): Checking ISAKMP transform 11 against priority 1 policy  
ISAKMP: encryption 3DES-CBC  
ISAKMP: hash SHA  
ISAKMP: default group 2  
ISAKMP: auth pre-share  
ISAKMP: life type in seconds  
ISAKMP: life duration (VPI) of 0x0 0x20 0xC4 0x9B  
ISAKMP (0:1): Encryption algorithm offered does not match policy!  
ISAKMP (0:1): atts are not acceptable. Next payload is 3  
ISAKMP (0:1): Checking ISAKMP transform 12 against priority 1 policy  
ISAKMP: encryption 3DES-CBC  
ISAKMP: hash MD5  
ISAKMP: default group 2  
ISAKMP: auth pre-share  
ISAKMP: life type in seconds  
ISAKMP: life duration (VPI) of 0x0 0x20 0xC4 0x9B  
ISAKMP (0:1): Encryption algorithm offered does not match policy!  
ISAKMP (0:1): atts are not acceptable. Next payload is 3  
ISAKMP (0:1): Checking ISAKMP transform 13 against priority 1 policy  
ISAKMP: encryption DES-CBC  
ISAKMP: hash MD5  
ISAKMP: default group 2  
ISAKMP: auth XAUTHInitPreShared  
ISAKMP: life type in seconds  
ISAKMP: life duration (VPI) of 0x0 0x20 0xC4 0x9B  
**ISAKMP (0:1): atts are acceptable. Next payload is 3**  
ISAKMP (0:1): processing KE payload. message ID = 0  
ISAKMP (0:1): processing NONCE payload. message ID = 0  
ISAKMP (0:1): vendor ID is NAT-T v2  
ISAKMP (0:1): Input = IKE\_MSG\_FROM\_PEER, IKE\_AM\_EXCH  
ISAKMP (0:1): Old State = IKE\_READY New State = IKE\_R\_AM\_AAA\_AWAIT  
ISAKMP: got callback 1  
ISAKMP (0:1): SKEYID state generated  
ISAKMP (0:1): constructed NAT-T vendor-02 ID  
ISAKMP (0:1): SA is doing pre-shared key authentication  
    plus XAUTH using id type ID\_IPV4\_ADDR  
ISAKMP (1): ID payload  
next-payload : 10  
type : 1  
addr : 172.18.124.159  
protocol : 17  
port : 0  
length : 8  
ISAKMP (1): Total payload length: 12  
ISAKMP (0:1): constructed HIS NAT-D  
ISAKMP (0:1): constructed MINE NAT-D  
ISAKMP (0:1): sending packet to 172.18.124.96 my\_port 500  
    peer\_port 500 (R) AG\_INIT\_EXCH  
ISAKMP (0:1): Input = IKE\_MSG\_FROM\_AAA, PRESHARED\_KEY\_REPLY  
ISAKMP (0:1): Old State = IKE\_R\_AM\_AAA\_AWAIT New State = IKE\_R\_AM2  
ISAKMP (0:1): received packet from 172.18.124.96 dport 500  
    sport 500 Global (R) AG\_INIT\_EXCH  
ISAKMP (0:1): processing HASH payload. message ID = 0  
ISAKMP (0:1): processing NOTIFY INITIAL\_CONTACT protocol 1  
spi 0, message ID = 0, sa = 63972310



ISAKMP (0:1): Process initial contact,  
bring down existing phase 1 and 2 SA's with local 172.18.124.159  
remote 172.18.124.96 remote port 500  
ISAKMP (0:1): returning IP addr to the address pool: 14.1.1.105  
ISAKMP (0:1): returning address 14.1.1.105 to pool  
ISAKMP:received payload type 17  
ISAKMP (0:1): Detected NAT-D payload  
ISAKMP (0:1): recalc my hash for NAT-D  
ISAKMP (0:1): NAT match MINE hash  
ISAKMP:received payload type 17  
ISAKMP (0:1): Detected NAT-D payload  
ISAKMP (0:1): recalc his hash for NAT-D  
ISAKMP (0:1): NAT match HIS hash  
ISAKMP (0:1): SA has been authenticated with 172.18.124.96  
ISAKMP: set new node 1397605141 to CONF\_XAUTH  
ISAKMP (0:1): sending packet to 172.18.124.96  
my\_port 500 peer\_port 500 (R) QM\_IDLE  
ISAKMP (0:1): purging node 1397605141  
ISAKMP: Sending phase 1 responder lifetime 86400  
ISAKMP (0:1): peer matches \*none\* of the profiles  
ISAKMP (0:1): Input = IKE\_MSG\_FROM\_PEER, IKE\_AM\_EXCH  
ISAKMP (0:1): Old State = IKE\_R\_AM2 New State = IKE\_P1\_COMPLETE  
IPSEC(key\_engine): got a queue event...  
ISAKMP (0:1): Need XAUTH  
ISAKMP (0:1): Input = IKE\_MSG\_INTERNAL, IKE\_PHASE1\_COMPLETE  
ISAKMP (0:1): Old State = IKE\_P1\_COMPLETE  
New State = IKE\_XAUTH\_AAA\_START\_LOGIN\_AWAIT  
ISAKMP: got callback 1  
ISAKMP: set new node 1446280258 to CONF\_XAUTH  
ISAKMP/xauth: request attribute XAUTH\_USER\_NAME\_V2  
ISAKMP/xauth: request attribute XAUTH\_USER\_PASSWORD\_V2  
ISAKMP (0:1): initiating peer config to 172.18.124.96. ID = 1446280258  
ISAKMP (0:1): sending packet to 172.18.124.96  
my\_port 500 peer\_port 500 (R) CONF\_XAUTH  
ISAKMP (0:1): Input = IKE\_MSG\_FROM\_AAA, IKE\_AAA\_START\_LOGIN  
ISAKMP (0:1): Old State = IKE\_XAUTH\_AAA\_START\_LOGIN\_AWAIT  
New State = IKE\_XAUTH\_REQ\_SENT  
ISAKMP (0:1): received packet from 172.18.124.96 dport 500  
sport 500 Global (R) CONF\_XAUTH  
ISAKMP (0:1): processing transaction payload from 172.18.124.96.  
message ID = 1446280258  
ISAKMP: Config payload REPLY  
ISAKMP/xauth: reply attribute XAUTH\_USER\_NAME\_V2  
ISAKMP/xauth: reply attribute XAUTH\_USER\_PASSWORD\_V2  
ISAKMP (0:1): deleting node 1446280258 error FALSE  
reason "done with xauth request/reply exchange"  
ISAKMP (0:1): Input = IKE\_MSG\_FROM\_PEER, IKE\_CFG\_REPLY  
ISAKMP (0:1): Old State = IKE\_XAUTH\_REQ\_SENT  
New State = IKE\_XAUTH\_AAA\_CONT\_LOGIN\_AWAIT  
ISAKMP: got callback 1  
ISAKMP: set new node 117774567 to CONF\_XAUTH  
ISAKMP (0:1): initiating peer config to 172.18.124.96.  
ID = 117774567  
ISAKMP (0:1): sending packet to 172.18.124.96 my\_port 500  
peer\_port 500 (R) CONF\_XAUTH  
ISAKMP (0:1): Input = IKE\_MSG\_FROM\_AAA, IKE\_AAA\_CONT\_LOGIN  
ISAKMP (0:1): Old State = IKE\_XAUTH\_AAA\_CONT\_LOGIN\_AWAIT  
New State = IKE\_XAUTH\_SET\_SENT  
ISAKMP (0:1): received packet from 172.18.124.96 dport 500  
sport 500 Global (R) CONF\_XAUTH  
ISAKMP (0:1): processing transaction payload from 172.18.124.96.  
message ID = 117774567  
ISAKMP: Config payload ACK  
ISAKMP (0:1): XAUTH ACK Processed

```
ISAKMP (0:1): deleting node 117774567 error FALSE
    reason "done with transaction"
ISAKMP (0:1): Input = IKE_MSG_FROM_PEER, IKE_CFG_ACK
ISAKMP (0:1): Old State = IKE_XAUTH_SET_SENT
    New State = IKE_P1_COMPLETE
ISAKMP (0:1): Input = IKE_MSG_INTERNAL, IKE_PHASE1_COMPLETE
ISAKMP (0:1): Old State = IKE_P1_COMPLETE
    New State = IKE_P1_COMPLETE
ISAKMP (0:1): received packet from 172.18.124.96 dport 500
    sport 500 Global (R) QM_IDLE
ISAKMP: set new node 188739171 to QM_IDLE
ISAKMP (0:1): processing transaction payload from 172.18.124.96.
    message ID = 188739171
ISAKMP: Config payload REQUEST
ISAKMP (0:1): checking request:
ISAKMP: IP4_ADDRESS
ISAKMP: IP4_NETMASK
ISAKMP: IP4_DNS
ISAKMP: IP4_NBNS
ISAKMP: ADDRESS_EXPIRY
ISAKMP: APPLICATION_VERSION
ISAKMP: UNKNOWN Unknown Attr: 0x7000
ISAKMP: UNKNOWN Unknown Attr: 0x7001
ISAKMP: DEFAULT_DOMAIN
ISAKMP: SPLIT_INCLUDE
ISAKMP: UNKNOWN Unknown Attr: 0x7003
ISAKMP: UNKNOWN Unknown Attr: 0x7007
ISAKMP: UNKNOWN Unknown Attr: 0x7008
ISAKMP: UNKNOWN Unknown Attr: 0x7009
ISAKMP: UNKNOWN Unknown Attr: 0x700A
ISAKMP: UNKNOWN Unknown Attr: 0x7005
ISAKMP (0:1): Input = IKE_MSG_FROM_PEER, IKE_CFG_REQUEST
ISAKMP (0:1): Old State = IKE_P1_COMPLETE
    New State = IKE_CONFIG_AUTHOR_AAA_AWAIT
ISAKMP: got callback 1
ISAKMP (0:1): attributes sent in message:
Address: 0.2.0.0
ISAKMP (0:1): allocating address 14.1.1.106
ISAKMP: Sending private address: 14.1.1.106
ISAKMP: Sending IP4_DNS server address: 14.1.1.10
ISAKMP: Sending IP4_NBNS server address: 14.1.1.20
ISAKMP: Sending ADDRESS_EXPIRY seconds left to
    use the address: 86396
ISAKMP: Sending APPLICATION_VERSION string: Cisco
    Internetwork Operating System Software
IOS (tm) 3600 Software (C3640-JK903S-M), Version 12.2(15)T2,
    RELEASE SOFTWARE (fc2)
TAC Support: http://www.cisco.com/tac
Copyright (c) 1986-2003 by cisco Systems, Inc.
Compiled Wed 30-Apr-03 05:42 by nmasa
ISAKMP (0/1): Unknown Attr: UNKNOWN (0x7000)
ISAKMP (0/1): Unknown Attr: UNKNOWN (0x7001)
ISAKMP: Sending DEFAULT_DOMAIN default domain name: cisco.com
ISAKMP (0/1): Unknown Attr: UNKNOWN (0x7003)
ISAKMP (0/1): Unknown Attr: UNKNOWN (0x7007)
ISAKMP (0/1): Unknown Attr: UNKNOWN (0x7008)
ISAKMP (0/1): Unknown Attr: UNKNOWN (0x7009)
ISAKMP (0/1): Unknown Attr: UNKNOWN (0x700A)
ISAKMP (0/1): Unknown Attr: UNKNOWN (0x7005)
ISAKMP (0:1): responding to peer config from 172.18.124.96.
    ID = 188739171
ISAKMP (0:1): sending packet to 172.18.124.96 my_port 500
    peer_port 500 (R) CONF_ADDR
ISAKMP (0:1): deleting node 188739171 error FALSE reason ""
```

```
ISAKMP (0:1): Input = IKE_MSG_FROM_AAA, IKE_AAA_GROUP_ATTR
ISAKMP (0:1): Old State = IKE_CONFIG_AUTHOR_AAA_AWAIT
    New State = IKE_P1_COMPLETE
ISAKMP (0:1): received packet from 172.18.124.96 dport 500
    sport 500 Global (R) QM_IDLE
ISAKMP: set new node -1836135476 to QM_IDLE
ISAKMP (0:1): processing HASH payload. message ID = -1836135476
ISAKMP (0:1): processing SA payload. message ID = -1836135476
ISAKMP (0:1): Checking IPsec proposal 1
ISAKMP: transform 1, ESP_AES
ISAKMP: attributes in transform:
ISAKMP: authenticator is HMAC-MD5
ISAKMP: encaps is 1
ISAKMP: key length is 256
ISAKMP: SA life type in seconds
ISAKMP: SA life duration (VPI) of 0x0 0x20 0xC4 0x9B
ISAKMP (0:1): atts are acceptable.
ISAKMP (0:1): Checking IPsec proposal 1
ISAKMP (0:1): transform 1, IPPCP LZS
ISAKMP: attributes in transform:
ISAKMP: encaps is 1
ISAKMP: SA life type in seconds
ISAKMP: SA life duration (VPI) of 0x0 0x20 0xC4 0x9B
ISAKMP (0:1): atts are acceptable.
IPSEC(validate_proposal_request): proposal part #1,
(key eng. msg.) INBOUND local= 172.18.124.159, remote= 172.18.124.96,
local_proxy= 172.18.124.159/255.255.255.255/0/0 (type=1),
remote_proxy= 14.1.1.106/255.255.255.255/0/0 (type=1),
protocol= ESP, transform= esp-aes 256 esp-md5-hmac ,
lifedur= 0s and 0kb,
spi= 0x0(0), conn_id= 0, keysize= 256, flags= 0x2
IPSEC(validate_proposal_request): proposal part #2,
(key eng. msg.) INBOUND local= 172.18.124.159, remote= 172.18.124.96,
local_proxy= 172.18.124.159/255.255.255.255/0/0 (type=1),
remote_proxy= 14.1.1.106/255.255.255.255/0/0 (type=1),
protocol= PCP, transform= comp-lzs ,
lifedur= 0s and 0kb,
spi= 0x0(0), conn_id= 0, keysize= 0, flags= 0x2
IPSEC(kei_proxy): head = clientmap, map->ivrf = , kei->ivrf =
IPSEC(validate_transform_proposal): transform proposal
    not supported for identity:
{esp-aes 256 esp-md5-hmac comp-lzs }
ISAKMP (0:1): IPsec policy invalidated proposal
ISAKMP (0:1): Checking IPsec proposal 2
ISAKMP: transform 1, ESP_AES
ISAKMP: attributes in transform:
ISAKMP: authenticator is HMAC-SHA
ISAKMP: encaps is 1
ISAKMP: key length is 256
ISAKMP: SA life type in seconds
ISAKMP: SA life duration (VPI) of 0x0 0x20 0xC4 0x9B
ISAKMP (0:1): atts are acceptable.
ISAKMP (0:1): Checking IPsec proposal 2
ISAKMP (0:1): transform 1, IPPCP LZS
ISAKMP: attributes in transform:
ISAKMP: encaps is 1
ISAKMP: SA life type in seconds
ISAKMP: SA life duration (VPI) of 0x0 0x20 0xC4 0x9B
ISAKMP (0:1): atts are acceptable.
IPSEC(validate_proposal_request): proposal part #1,
(key eng. msg.) INBOUND local= 172.18.124.159, remote= 172.18.124.96,
local_proxy= 172.18.124.159/255.255.255.255/0/0 (type=1),
remote_proxy= 14.1.1.106/255.255.255.255/0/0 (type=1),
protocol= ESP, transform= esp-aes 256 esp-sha-hmac ,
```

```
lifedur= 0s and 0kb,
spi= 0x0(0), conn_id= 0, keysize= 256, flags= 0x2
IPSEC(validate_proposal_request): proposal part #2,
(key eng. msg.) INBOUND local= 172.18.124.159, remote= 172.18.124.96,
local_proxy= 172.18.124.159/255.255.255.255/0/0 (type=1),
remote_proxy= 14.1.1.106/255.255.255.255/0/0 (type=1),
protocol= PCP, transform= comp-lzs ,
lifedur= 0s and 0kb,
spi= 0x0(0), conn_id= 0, keysize= 0, flags= 0x2
IPSEC(kei_proxy): head = clientmap, map->ivrf = , kei->ivrf =
IPSEC(validate_transform_proposal): transform proposal
    not supported for identity:
{esp-aes 256 esp-sha-hmac comp-lzs }
ISAKMP (0:1): IPsec policy invalidated proposal
ISAKMP (0:1): Checking IPsec proposal 3
ISAKMP: transform 1, ESP_AES
ISAKMP: attributes in transform:
ISAKMP: authenticator is HMAC-MD5
ISAKMP: encaps is 1
ISAKMP: key length is 128
ISAKMP: SA life type in seconds
ISAKMP: SA life duration (VPI) of 0x0 0x20 0xC4 0x9B
ISAKMP (0:1): atts are acceptable.
ISAKMP (0:1): Checking IPsec proposal 3
ISAKMP (0:1): transform 1, IPPCP LZS
ISAKMP: attributes in transform:
ISAKMP: encaps is 1
ISAKMP: SA life type in seconds
ISAKMP: SA life duration (VPI) of 0x0 0x20 0xC4 0x9B
ISAKMP (0:1): atts are acceptable.
IPSEC(validate_proposal_request): proposal part #1,
(key eng. msg.) INBOUND local= 172.18.124.159, remote= 172.18.124.96,
local_proxy= 172.18.124.159/255.255.255.255/0/0 (type=1),
remote_proxy= 14.1.1.106/255.255.255.255/0/0 (type=1),
protocol= ESP, transform= esp-aes esp-md5-hmac ,
lifedur= 0s and 0kb,
spi= 0x0(0), conn_id= 0, keysize= 128, flags= 0x2
IPSEC(validate_proposal_request): proposal part #2,
(key eng. msg.) INBOUND local= 172.18.124.159, remote= 172.18.124.96,
local_proxy= 172.18.124.159/255.255.255.255/0/0 (type=1),
remote_proxy= 14.1.1.106/255.255.255.255/0/0 (type=1),
protocol= PCP, transform= comp-lzs ,
lifedur= 0s and 0kb,
spi= 0x0(0), conn_id= 0, keysize= 0, flags= 0x2
IPSEC(kei_proxy): head = clientmap, map->ivrf = , kei->ivrf =
IPSEC(validate_transform_proposal): transform proposal
    not supported for identity:
{esp-aes esp-md5-hmac comp-lzs }
ISAKMP (0:1): IPsec policy invalidated proposal
ISAKMP (0:1): Checking IPsec proposal 4
ISAKMP: transform 1, ESP_AES
ISAKMP: attributes in transform:
ISAKMP: authenticator is HMAC-SHA
ISAKMP: encaps is 1
ISAKMP: key length is 128
ISAKMP: SA life type in seconds
ISAKMP: SA life duration (VPI) of 0x0 0x20 0xC4 0x9B
ISAKMP (0:1): atts are acceptable.
ISAKMP (0:1): Checking IPsec proposal 4
ISAKMP (0:1): transform 1, IPPCP LZS
ISAKMP: attributes in transform:
ISAKMP: encaps is 1
ISAKMP: SA life type in seconds
ISAKMP: SA life duration (VPI) of 0x0 0x20 0xC4 0x9B
```

```
ISAKMP (0:1): atts are acceptable.
IPSEC(validate_proposal_request): proposal part #1,
(key eng. msg.) INBOUND local= 172.18.124.159, remote= 172.18.124.96,
local_proxy= 172.18.124.159/255.255.255.255/0/0 (type=1),
remote_proxy= 14.1.1.106/255.255.255.255/0/0 (type=1),
protocol= ESP, transform= esp-aes esp-sha-hmac ,
lifedur= 0s and 0kb,
spi= 0x0(0), conn_id= 0, keysize= 128, flags= 0x2
IPSEC(validate_proposal_request): proposal part #2,
(key eng. msg.) INBOUND local= 172.18.124.159, remote= 172.18.124.96,
local_proxy= 172.18.124.159/255.255.255.255/0/0 (type=1),
remote_proxy= 14.1.1.106/255.255.255.255/0/0 (type=1),
protocol= PCP, transform= comp-lzs ,
lifedur= 0s and 0kb,
spi= 0x0(0), conn_id= 0, keysize= 0, flags= 0x2
IPSEC(kei_proxy): head = clientmap, map->ivrf = , kei->ivrf =
IPSEC(validate_transform_proposal): transform proposal
    not supported for identity:
{esp-aes esp-sha-hmac comp-lzs }
ISAKMP (0:1): IPsec policy invalidated proposal
ISAKMP (0:1): Checking IPsec proposal 5
ISAKMP: transform 1, ESP_AES
ISAKMP: attributes in transform:
ISAKMP: authenticator is HMAC-MD5
ISAKMP: encaps is 1
ISAKMP: key length is 256
ISAKMP: SA life type in seconds
ISAKMP: SA life duration (VPI) of 0x0 0x20 0xC4 0x9B
ISAKMP (0:1): atts are acceptable.
IPSEC(validate_proposal_request): proposal part #1,
(key eng. msg.) INBOUND local= 172.18.124.159, remote= 172.18.124.96,
local_proxy= 172.18.124.159/255.255.255.255/0/0 (type=1),
remote_proxy= 14.1.1.106/255.255.255.255/0/0 (type=1),
protocol= ESP, transform= esp-aes 256 esp-md5-hmac ,
lifedur= 0s and 0kb,
spi= 0x0(0), conn_id= 0, keysize= 256, flags= 0x2
IPSEC(kei_proxy): head = clientmap, map->ivrf = , kei->ivrf =
IPSEC(validate_transform_proposal): transform proposal
    not supported for identity:
{esp-aes 256 esp-md5-hmac }
ISAKMP (0:1): IPsec policy invalidated proposal
ISAKMP (0:1): Checking IPsec proposal 6
ISAKMP: transform 1, ESP_AES
ISAKMP: attributes in transform:
ISAKMP: authenticator is HMAC-SHA
ISAKMP: encaps is 1
ISAKMP: key length is 256
ISAKMP: SA life type in seconds
ISAKMP: SA life duration (VPI) of 0x0 0x20 0xC4 0x9B
ISAKMP (0:1): atts are acceptable.
IPSEC(validate_proposal_request): proposal part #1,
(key eng. msg.) INBOUND local= 172.18.124.159, remote= 172.18.124.96,
local_proxy= 172.18.124.159/255.255.255.255/0/0 (type=1),
remote_proxy= 14.1.1.106/255.255.255.255/0/0 (type=1),
protocol= ESP, transform= esp-aes 256 esp-sha-hmac ,
lifedur= 0s and 0kb,
spi= 0x0(0), conn_id= 0, keysize= 256, flags= 0x2
IPSEC(kei_proxy): head = clientmap, map->ivrf = , kei->ivrf =
IPSEC(validate_transform_proposal): transform proposal
    not supported for identity:
{esp-aes 256 esp-sha-hmac }
ISAKMP (0:1): IPsec policy invalidated proposal
ISAKMP (0:1): Checking IPsec proposal 7
ISAKMP: transform 1, ESP_AES
```

ISAKMP: attributes in transform:  
ISAKMP: authenticator is HMAC-MD5  
ISAKMP: encaps is 1  
ISAKMP: key length is 128  
ISAKMP: SA life type in seconds  
ISAKMP: SA life duration (VPI) of 0x0 0x20 0xC4 0x9B  
ISAKMP (0:1): atts are acceptable.  
IPSEC(validate\_proposal\_request): proposal part #1,  
(key eng. msg.) INBOUND local= 172.18.124.159, remote= 172.18.124.96,  
local\_proxy= 172.18.124.159/255.255.255.255/0/0 (type=1),  
remote\_proxy= 14.1.1.106/255.255.255.255/0/0 (type=1),  
protocol= ESP, transform= esp-aes esp-md5-hmac ,  
lifedur= 0s and 0kb,  
spi= 0x0(0), conn\_id= 0, keysize= 128, flags= 0x2  
IPSEC(kei\_proxy): head = clientmap, map->ivrf = , kei->ivrf =  
IPSEC(validate\_transform\_proposal): transform proposal  
not supported for identity:  
{esp-aes esp-md5-hmac }  
ISAKMP (0:1): IPsec policy invalidated proposal  
ISAKMP (0:1): Checking IPsec proposal 8  
ISAKMP: transform 1, ESP\_AES  
ISAKMP: attributes in transform:  
ISAKMP: authenticator is HMAC-SHA  
ISAKMP: encaps is 1  
ISAKMP: key length is 128  
ISAKMP: SA life type in seconds  
ISAKMP: SA life duration (VPI) of 0x0 0x20 0xC4 0x9B  
ISAKMP (0:1): atts are acceptable.  
IPSEC(validate\_proposal\_request): proposal part #1,  
(key eng. msg.) INBOUND local= 172.18.124.159, remote= 172.18.124.96,  
local\_proxy= 172.18.124.159/255.255.255.255/0/0 (type=1),  
remote\_proxy= 14.1.1.106/255.255.255.255/0/0 (type=1),  
protocol= ESP, transform= esp-aes esp-sha-hmac ,  
lifedur= 0s and 0kb,  
spi= 0x0(0), conn\_id= 0, keysize= 128, flags= 0x2  
IPSEC(kei\_proxy): head = clientmap, map->ivrf = , kei->ivrf =  
IPSEC(validate\_transform\_proposal): transform proposal  
not supported for identity:  
{esp-aes esp-sha-hmac }  
ISAKMP (0:1): IPsec policy invalidated proposal  
ISAKMP (0:1): Checking IPsec proposal 9  
ISAKMP: transform 1, ESP\_3DES  
ISAKMP: attributes in transform:  
ISAKMP: authenticator is HMAC-MD5  
ISAKMP: encaps is 1  
ISAKMP: SA life type in seconds  
ISAKMP: SA life duration (VPI) of 0x0 0x20 0xC4 0x9B  
ISAKMP (0:1): atts are acceptable.  
ISAKMP (0:1): Checking IPsec proposal 9  
ISAKMP (0:1): transform 1, IPPCP LZS  
ISAKMP: attributes in transform:  
ISAKMP: encaps is 1  
ISAKMP: SA life type in seconds  
ISAKMP: SA life duration (VPI) of 0x0 0x20 0xC4 0x9B  
ISAKMP (0:1): atts are acceptable.  
IPSEC(validate\_proposal\_request): proposal part #1,  
(key eng. msg.) INBOUND local= 172.18.124.159, remote= 172.18.124.96,  
local\_proxy= 172.18.124.159/255.255.255.255/0/0 (type=1),  
remote\_proxy= 14.1.1.106/255.255.255.255/0/0 (type=1),  
protocol= ESP, transform= esp-3des esp-md5-hmac ,  
lifedur= 0s and 0kb,  
spi= 0x0(0), conn\_id= 0, keysize= 0, flags= 0x2  
IPSEC(validate\_proposal\_request): proposal part #2,  
(key eng. msg.) INBOUND local= 172.18.124.159, remote= 172.18.124.96,

```
local_proxy= 172.18.124.159/255.255.255.255/0/0 (type=1),
remote_proxy= 14.1.1.106/255.255.255.255/0/0 (type=1),
protocol= PCP, transform= comp-lzs ,
lifedur= 0s and 0kb,
spi= 0x0(0), conn_id= 0, keysize= 0, flags= 0x2
IPSEC(kei_proxy): head = clientmap, map->ivrf = , kei->ivrf =
IPSEC(validate_transform_proposal): transform proposal
    not supported for identity:
{esp-3des esp-md5-hmac comp-lzs }
ISAKMP (0:1): IPsec policy invalidated proposal
ISAKMP (0:1): Checking IPsec proposal 10
ISAKMP: transform 1, ESP_3DES
ISAKMP: attributes in transform:
ISAKMP: authenticator is HMAC-SHA
ISAKMP: encaps is 1
ISAKMP: SA life type in seconds
ISAKMP: SA life duration (VPI) of 0x0 0x20 0xC4 0x9B
ISAKMP (0:1): atts are acceptable.
ISAKMP (0:1): Checking IPsec proposal 10
ISAKMP (0:1): transform 1, IPPCP LZS
ISAKMP: attributes in transform:
ISAKMP: encaps is 1
ISAKMP: SA life type in seconds
ISAKMP: SA life duration (VPI) of 0x0 0x20 0xC4 0x9B
ISAKMP (0:1): atts are acceptable.
IPSEC(validate_proposal_request): proposal part #1,
(key eng. msg.) INBOUND local= 172.18.124.159, remote= 172.18.124.96,
local_proxy= 172.18.124.159/255.255.255.255/0/0 (type=1),
remote_proxy= 14.1.1.106/255.255.255.255/0/0 (type=1),
protocol= ESP, transform= esp-3des esp-sha-hmac ,
lifedur= 0s and 0kb,
spi= 0x0(0), conn_id= 0, keysize= 0, flags= 0x2
IPSEC(validate_proposal_request): proposal part #2,
(key eng. msg.) INBOUND local= 172.18.124.159, remote= 172.18.124.96,
local_proxy= 172.18.124.159/255.255.255.255/0/0 (type=1),
remote_proxy= 14.1.1.106/255.255.255.255/0/0 (type=1),
protocol= PCP, transform= comp-lzs ,
lifedur= 0s and 0kb,
spi= 0x0(0), conn_id= 0, keysize= 0, flags= 0x2
IPSEC(kei_proxy): head = clientmap, map->ivrf = , kei->ivrf =
IPSEC(validate_transform_proposal): transform proposal
    not supported for identity:
{esp-3des esp-sha-hmac comp-lzs }
ISAKMP (0:1): IPsec policy invalidated proposal
ISAKMP (0:1): Checking IPsec proposal 11
ISAKMP: transform 1, ESP_3DES
ISAKMP: attributes in transform:
ISAKMP: authenticator is HMAC-MD5
ISAKMP: encaps is 1
ISAKMP: SA life type in seconds
ISAKMP: SA life duration (VPI) of 0x0 0x20 0xC4 0x9B
ISAKMP (0:1): atts are acceptable.
IPSEC(validate_proposal_request): proposal part #1,
(key eng. msg.) INBOUND local= 172.18.124.159, remote= 172.18.124.96,
local_proxy= 172.18.124.159/255.255.255.255/0/0 (type=1),
remote_proxy= 14.1.1.106/255.255.255.255/0/0 (type=1),
protocol= ESP, transform= esp-3des esp-md5-hmac ,
lifedur= 0s and 0kb,
spi= 0x0(0), conn_id= 0, keysize= 0, flags= 0x2
IPSEC(kei_proxy): head = clientmap, map->ivrf = , kei->ivrf =
ISAKMP (0:1): processing NONCE payload. message ID = -1836135476
ISAKMP (0:1): processing ID payload. message ID = -1836135476
ISAKMP (0:1): processing ID payload. message ID = -1836135476
ISAKMP (0:1): asking for 1 spis from ipsec
```

```
ISAKMP (0:1): Node -1836135476, Input = IKE_MSG_FROM_PEER,
  IKE_QM_EXCH
ISAKMP (0:1): Old State = IKE_QM_READY
  New State = IKE_QM_SPI_STARVE
ISAKMP (0:1): received packet from 172.18.124.96 dport 500
  sport 500 Global (R) QM_IDLE
ISAKMP: set new node -1171731793 to QM_IDLE
ISAKMP (0:1): processing HASH payload. message ID = -1171731793
ISAKMP (0:1): processing SA payload. message ID = -1171731793
ISAKMP (0:1): Checking IPsec proposal 1
ISAKMP: transform 1, ESP_AES
ISAKMP: attributes in transform:
ISAKMP: authenticator is HMAC-MD5
ISAKMP: encaps is 1
ISAKMP: key length is 256
ISAKMP: SA life type in seconds
ISAKMP: SA life duration (VPI) of 0x0 0x20 0xC4 0x9B
ISAKMP (0:1): atts are acceptable.
ISAKMP (0:1): Checking IPsec proposal 1
ISAKMP (0:1): transform 1, IPPCP LZS
ISAKMP: attributes in transform:
ISAKMP: encaps is 1
ISAKMP: SA life type in seconds
ISAKMP: SA life duration (VPI) of 0x0 0x20 0xC4 0x9B
ISAKMP (0:1): atts are acceptable.
IPSEC(validate_proposal_request): proposal part #1,
(key eng. msg.) INBOUND local= 172.18.124.159, remote= 172.18.124.96,
local_proxy= 0.0.0.0/0.0.0.0/0/0 (type=4),
remote_proxy= 14.1.1.106/255.255.255.255/0/0 (type=1),
protocol= ESP, transform= esp-aes 256 esp-md5-hmac ,
lifedur= 0s and 0kb,
spi= 0x0(0), conn_id= 0, keysize= 256, flags= 0x2
IPSEC(validate_proposal_request): proposal part #2,
(key eng. msg.) INBOUND local= 172.18.124.159, remote= 172.18.124.96,
local_proxy= 0.0.0.0/0.0.0.0/0/0 (type=4),
remote_proxy= 14.1.1.106/255.255.255.255/0/0 (type=1),
protocol= PCP, transform= comp-lzs ,
lifedur= 0s and 0kb,
spi= 0x0(0), conn_id= 0, keysize= 0, flags= 0x2
IPSEC(kei_proxy): head = clientmap, map->ivrf = , kei->ivrf =
IPSEC(validate_transform_proposal): transform proposal
  not supported for identity:
{esp-aes 256 esp-md5-hmac comp-lzs }
ISAKMP (0:1): IPsec policy invalidated proposal
ISAKMP (0:1): Checking IPsec proposal 2
ISAKMP: transform 1, ESP_AES
ISAKMP: attributes in transform:
ISAKMP: authenticator is HMAC-SHA
ISAKMP: encaps is 1
ISAKMP: key length is 256
ISAKMP: SA life type in seconds
ISAKMP: SA life duration (VPI) of 0x0 0x20 0xC4 0x9B
ISAKMP (0:1): atts are acceptable.
ISAKMP (0:1): Checking IPsec proposal 2
ISAKMP (0:1): transform 1, IPPCP LZS
ISAKMP: attributes in transform:
ISAKMP: encaps is 1
ISAKMP: SA life type in seconds
ISAKMP: SA life duration (VPI) of 0x0 0x20 0xC4 0x9B
ISAKMP (0:1): atts are acceptable.
IPSEC(validate_proposal_request): proposal part #1,
(key eng. msg.) INBOUND local= 172.18.124.159, remote= 172.18.124.96,
local_proxy= 0.0.0.0/0.0.0.0/0/0 (type=4),
remote_proxy= 14.1.1.106/255.255.255.255/0/0 (type=1),
```



```
protocol= ESP, transform= esp-aes 256 esp-sha-hmac ,
lifedur= 0s and 0kb,
spi= 0x0(0), conn_id= 0, keysize= 256, flags= 0x2
IPSEC(validate_proposal_request): proposal part #2,
(key eng. msg.) INBOUND local= 172.18.124.159, remote= 172.18.124.96,
local_proxy= 0.0.0.0/0.0.0.0/0/0 (type=4),
remote_proxy= 14.1.1.106/255.255.255.255/0/0 (type=1),
protocol= PCP, transform= comp-lzs ,
lifedur= 0s and 0kb,
spi= 0x0(0), conn_id= 0, keysize= 0, flags= 0x2
IPSEC(kei_proxy): head = clientmap, map->ivrf = , kei->ivrf =
IPSEC(validate_transform_proposal): transform proposal
    not supported for identity:
{esp-aes 256 esp-sha-hmac comp-lzs }
ISAKMP (0:1): IPsec policy invalidated proposal
ISAKMP (0:1): Checking IPsec proposal 3
ISAKMP: transform 1, ESP_AES
ISAKMP: attributes in transform:
ISAKMP: authenticator is HMAC-MD5
ISAKMP: encaps is 1
ISAKMP: key length is 128
ISAKMP: SA life type in seconds
ISAKMP: SA life duration (VPI) of 0x0 0x20 0xC4 0x9B
ISAKMP (0:1): atts are acceptable.
ISAKMP (0:1): Checking IPsec proposal 3
ISAKMP (0:1): transform 1, IPPCP LZS
ISAKMP: attributes in transform:
ISAKMP: encaps is 1
ISAKMP: SA life type in seconds
ISAKMP: SA life duration (VPI) of 0x0 0x20 0xC4 0x9B
ISAKMP (0:1): atts are acceptable.
IPSEC(validate_proposal_request): proposal part #1,
(key eng. msg.) INBOUND local= 172.18.124.159, remote= 172.18.124.96,
local_proxy= 0.0.0.0/0.0.0.0/0/0 (type=4),
remote_proxy= 14.1.1.106/255.255.255.255/0/0 (type=1),
protocol= ESP, transform= esp-aes esp-md5-hmac ,
lifedur= 0s and 0kb,
spi= 0x0(0), conn_id= 0, keysize= 128, flags= 0x2
IPSEC(validate_proposal_request): proposal part #2,
(key eng. msg.) INBOUND local= 172.18.124.159, remote= 172.18.124.96,
local_proxy= 0.0.0.0/0.0.0.0/0/0 (type=4),
remote_proxy= 14.1.1.106/255.255.255.255/0/0 (type=1),
protocol= PCP, transform= comp-lzs ,
lifedur= 0s and 0kb,
spi= 0x0(0), conn_id= 0, keysize= 0, flags= 0x2
IPSEC(kei_proxy): head = clientmap, map->ivrf = , kei->ivrf =
IPSEC(validate_transform_proposal): transform proposal
    not supported for identity:
{esp-aes esp-md5-hmac comp-lzs }
ISAKMP (0:1): IPsec policy invalidated proposal
ISAKMP (0:1): Checking IPsec proposal 4
ISAKMP: transform 1, ESP_AES
ISAKMP: attributes in transform:
ISAKMP: authenticator is HMAC-SHA
ISAKMP: encaps is 1
ISAKMP: key length is 128
ISAKMP: SA life type in seconds
ISAKMP: SA life duration (VPI) of 0x0 0x20 0xC4 0x9B
ISAKMP (0:1): atts are acceptable.
ISAKMP (0:1): Checking IPsec proposal 4
ISAKMP (0:1): transform 1, IPPCP LZS
ISAKMP: attributes in transform:
ISAKMP: encaps is 1
ISAKMP: SA life type in seconds
```

```
ISAKMP: SA life duration (VPI) of 0x0 0x20 0xC4 0x9B
ISAKMP (0:1): atts are acceptable.
IPSEC(validate_proposal_request): proposal part #1,
(key eng. msg.) INBOUND local= 172.18.124.159, remote= 172.18.124.96,
local_proxy= 0.0.0.0/0.0.0.0/0/0 (type=4),
remote_proxy= 14.1.1.106/255.255.255.255/0/0 (type=1),
protocol= ESP, transform= esp-aes esp-sha-hmac ,
lifedur= 0s and 0kb,
spi= 0x0(0), conn_id= 0, keysize= 128, flags= 0x2
IPSEC(validate_proposal_request): proposal part #2,
(key eng. msg.) INBOUND local= 172.18.124.159, remote= 172.18.124.96,
local_proxy= 0.0.0.0/0.0.0.0/0/0 (type=4),
remote_proxy= 14.1.1.106/255.255.255.255/0/0 (type=1),
protocol= PCP, transform= comp-lzs ,
lifedur= 0s and 0kb,
spi= 0x0(0), conn_id= 0, keysize= 0, flags= 0x2
IPSEC(kei_proxy): head = clientmap, map->ivrf = , kei->ivrf =
IPSEC(validate_transform_proposal): transform proposal
    not supported for identity:
{esp-aes esp-sha-hmac comp-lzs }
ISAKMP (0:1): IPsec policy invalidated proposal
ISAKMP (0:1): Checking IPsec proposal 5
ISAKMP: transform 1, ESP_AES
ISAKMP: attributes in transform:
ISAKMP: authenticator is HMAC-MD5
ISAKMP: encaps is 1
ISAKMP: key length is 256
ISAKMP: SA life type in seconds
ISAKMP: SA life duration (VPI) of 0x0 0x20 0xC4 0x9B
ISAKMP (0:1): processing ID payload. message ID = -1171731793
ISAKMP (0:1): processing ID payload. message ID = -1171731793
ISAKMP (0:1): asking for 1 spis from ipsec
ISAKMP (0:1): Node -1171731793, Input = IKE_MSG_FROM_PEER,
    IKE_QM_EXCH
ISAKMP (0:1): Old State = IKE_QM_READY
    New State = IKE_QM_SPI_STARVE
IPSEC(key_engine): got a queue event...
IPSEC(spi_response): getting spi 3756150268 for SA
from 172.18.124.159 to 172.18.124.96 for prot 3
IPSEC(key_engine): got a queue event...
IPSEC(spi_response): getting spi 2229862856 for SA
from 172.18.124.159 to 172.18.124.96 for prot 3
ISAKMP: received ke message (2/1)
ISAKMP: received ke message (2/1)
ISAKMP (0:1): sending packet to 172.18.124.96 my_port 500
    peer_port 500 (R) QM_IDLE
ISAKMP (0:1): Node -1836135476, Input = IKE_MSG_FROM_IPSEC,
    IKE_SPI_REPLY
ISAKMP (0:1): Old State = IKE_QM_SPI_STARVE
    New State = IKE_QM_R_QM2
ISAKMP (0:1): received packet from 172.18.124.96 dport 500
    sport 500 Global (R) QM_IDLE
ISAKMP: Locking peer struct 0x63B2EAE4,
    IPSEC refcount 1 for for stuff_ke
ISAKMP (0:1): Creating IPsec SAs
inbound SA from 172.18.124.96 to 172.18.124.159 (f/i) 0/ 0
(proxy 14.1.1.106 to 172.18.124.159)
has spi 0xDFE24DFC and conn_id 2000 and flags 2
lifetime of 2147483 seconds
has client flags 0x0
ISAKMP (0:1): Old State = IKE_QM_SPI_STARVE
    New State = IKE_QM_R_QM2
ISAKMP (0:1): received packet from 172.18.124.96 dport 500
    sport 500 Global (R) QM_IDLE
```

```

ISAKMP: Locking peer struct 0x63B2EAE4,
  IPSEC refcount 2 for for stuff_ke
ISAKMP (0:1): Creating IPsec SAs
inbound SA from 172.18.124.96 to 172.18.124.159 (f/i) 0/ 0
(proxy 14.1.1.106 to 0.0.0.0)
has spi 0x84E901C8 and conn_id 2002 and flags 2
lifetime of 2147483 seconds
has client flags 0x0
outbound SA from 172.18.124.159 to 172.18.124.96 (f/i) 0/ 0
(proxy 0.0.0.0 to 14.1.1.106 )
has spi -802758470 and conn_id 2003 and flags A
IPSEC(add mtree): src 0.0.0.0, dest 14.1.1.106, dest_port 0
IPSEC(create_sa): sa created,
(sa) sa_dest= 172.18.124.159, sa_prot= 50,
sa_spi= 0x84E901C8(2229862856),
sa_trans= esp-3des esp-md5-hmac , sa_conn_id= 2002
IPSEC(create_sa): sa created,
(sa) sa_dest= 172.18.124.96, sa_prot= 50,
sa_spi= 0xD026E0BA(3492208826),
sa_trans= esp-3des esp-md5-hmac , sa_conn_id= 2003
ISAKMP (0:1): received packet from 172.18.124.96 dport 500
sport 500 Global (R) QM_IDLE
ISAKMP: set new node 839140381 to QM_IDLE
ISAKMP (0:1): processing HASH payload. message ID = 839140381
ISAKMP (0:1): processing NOTIFY R_U_THERE protocol 1
spi 0, message ID = 839140381, sa = 63972310
ISAKMP (0:1): deleting node 839140381 error FALSE
reason "informational (in) state 1"
ISAKMP (0:1): Input = IKE_MSG_FROM_PEER, IKE_INFO_NOTIFY
ISAKMP (0:1): Old State = IKE_P1_COMPLETE
New State = IKE_P1_COMPLETE
ISAKMP (0:1): DPD/R_U_THERE received from peer 172.18.124.96,
sequence 0xA5A4632A
ISAKMP: set new node 760238809 to QM_IDLE
ISAKMP (0:1): sending packet to 172.18.124.96 my_port 500
peer_port 500 (R) QM_IDLE
ISAKMP (0:1): purging node 760238809
ISAKMP (0:1): Input = IKE_MSG_FROM_PEER,
IKE_MSG_KEEP_ALIVE
ISAKMP (0:1): Old State = IKE_P1_COMPLETE
New State = IKE_P1_COMPLETE
ISAKMP (0:1): purging node 188739171
ISAKMP (0:1): purging node -1836135476
ISAKMP (0:1): purging node -1171731793
3640#

```

## Registros del cliente

Para ver los registros, inicie LogViewer en VPN Client y asegúrese de que el filtro esté establecido en High para todas las clases configuradas. La salida del registro de ejemplo se muestra a continuación

1	10:24:17.492	02/26/02	Sev=Info/6	DIALER/0x63300002
				Initiating connection.
2	10:24:17.492	02/26/02	Sev=Info/4	CM/0x63100002
				Begin connection process
3	10:24:17.512	02/26/02	Sev=Info/4	CM/0x63100004
				Establish secure connection using Ethernet
4	10:24:17.512	02/26/02	Sev=Info/4	CM/0x63100026

Attempt connection with server "172.18.124.159"

5 10:24:17.512 02/26/02 Sev=Info/6 IKE/0x6300003B

Attempting to establish a connection with 172.18.124.159.

6 10:24:17.562 02/26/02 Sev=Info/4 IKE/0x63000013

SENDING >>> ISAKMP OAK AG (SA, KE, NON, ID, VID, VID, VID)  
to 172.18.124.159

7 10:24:17.962 02/26/02 Sev=Info/4 IPSEC/0x63700014

Deleted all keys

8 10:24:18.223 02/26/02 Sev=Info/5 IKE/0x6300002F

Received ISAKMP packet: peer = 172.18.124.159

9 10:24:18.223 02/26/02 Sev=Info/4 IKE/0x63000014

RECEIVING <<< ISAKMP OAK AG (SA, VID, VID, VID, VID, KE,  
ID, NON, HASH) from\$

10 10:24:18.223 02/26/02 Sev=Info/5 IKE/0x63000059

Vendor ID payload = 12F5F28C457168A9702D9FE274CC0100

11 10:24:18.223 02/26/02 Sev=Info/5 IKE/0x63000001

Peer is a Cisco-Unity compliant peer

12 10:24:18.223 02/26/02 Sev=Info/5 IKE/0x63000059

Vendor ID payload = AFCAD71368A1F1C96B8696FC77570100

13 10:24:18.223 02/26/02 Sev=Info/5 IKE/0x63000001

Peer supports DPD

14 10:24:18.223 02/26/02 Sev=Info/5 IKE/0x63000059

Vendor ID payload = 4C72E0B594C3C20DFCB7F4419CCEB0BE

15 10:24:18.223 02/26/02 Sev=Info/5 IKE/0x63000059

Vendor ID payload = 09002689DFD6B712

16 10:24:18.263 02/26/02 Sev=Info/4 IKE/0x63000013

SENDING >>> ISAKMP OAK AG \*(HASH, NOTIFY:STATUS\_INITIAL\_CONTACT)  
to 172.18.1\$

17 10:24:18.283 02/26/02 Sev=Info/5 IKE/0x6300002F

Received ISAKMP packet: peer = 172.18.124.159

18 10:24:18.283 02/26/02 Sev=Info/4 IKE/0x63000014

RECEIVING <<< ISAKMP OAK INFO \*(HASH, NOTIFY:STATUS\_RESP\_LIFETIME)  
from 172.\$

19 10:24:18.283 02/26/02 Sev=Info/5 IKE/0x63000044

RESPONDER-LIFETIME notify has value of 86400 seconds

20 10:24:18.283 02/26/02 Sev=Info/5 IKE/0x63000046

This SA has already been alive for 1 seconds, setting expiry to 86399 seconds\$

21 10:24:18.303 02/26/02 Sev=Info/5 IKE/0x6300002F

Received ISAKMP packet: peer = 172.18.124.159

22 10:24:18.303 02/26/02 Sev=Info/4 IKE/0x63000014

RECEIVING <<< ISAKMP OAK TRANS \*(HASH, ATTR) from 172.18.124.159

23 10:24:18.303 02/26/02 Sev=Info/4 CM/0x63100015

Launch xAuth application

24 10:24:20.546 02/26/02 Sev=Info/4 CM/0x63100017

xAuth application returned

```
25      10:24:20.546  02/26/02  Sev=Info/4      IKE/0x63000013
SENDING >>> ISAKMP OAK TRANS *(HASH, ATTR) to 172.18.124.159

26      10:24:20.566  02/26/02  Sev=Info/5      IKE/0x6300002F
Received ISAKMP packet: peer = 172.18.124.159

27      10:24:20.566  02/26/02  Sev=Info/4      IKE/0x63000014
RECEIVING <<< ISAKMP OAK TRANS *(HASH, ATTR) from 172.18.124.159

28      10:24:20.566  02/26/02  Sev=Info/4      CM/0x6310000E
Established Phase 1 SA.  1 Phase 1 SA in the system

29      10:24:20.576  02/26/02  Sev=Info/4      IKE/0x63000013
SENDING >>> ISAKMP OAK TRANS *(HASH, ATTR) to 172.18.124.159

30      10:24:20.586  02/26/02  Sev=Info/4      IKE/0x63000013
SENDING >>> ISAKMP OAK TRANS *(HASH, ATTR) to 172.18.124.159

31      10:24:20.636  02/26/02  Sev=Info/5      IKE/0x6300002F
Received ISAKMP packet: peer = 172.18.124.159

32      10:24:20.636  02/26/02  Sev=Info/4      IKE/0x63000014
RECEIVING <<< ISAKMP OAK TRANS *(HASH, ATTR) from 172.18.124.159

33      10:24:20.636  02/26/02  Sev=Info/5      IKE/0x63000010
MODE_CFG_REPLY: Attribute = INTERNAL_IPV4_ADDRESS: , value = 14.1.1.102

34      10:24:20.636  02/26/02  Sev=Info/5      IKE/0x63000010
MODE_CFG_REPLY: Attribute = INTERNAL_IPV4_DNS(1): , value = 14.38.100.10

35      10:24:20.636  02/26/02  Sev=Info/5      IKE/0x63000010
MODE_CFG_REPLY: Attribute = INTERNAL_IPV4_NBNS(1) (a.k.a. WINS) : , value = $

36      10:24:20.636  02/26/02  Sev=Info/5      IKE/0xA3000017
MODE_CFG_REPLY: The received (INTERNAL_ADDRESS_EXPIRY) attribute and value ($)

37      10:24:20.636  02/26/02  Sev=Info/5      IKE/0x6300000E
MODE_CFG_REPLY: Attribute = APPLICATION_VERSION, value = Cisco Internetwork $
IOS (tm) C2600 Software (C2600-JK903S-M), Version 12.2(8)T,  RELEASE SOFTWARE$
TAC Support: http://www.cisco.com/tac
Copyright (c) 1986-2002 by cisco Systems, Inc.
Compiled Thu 14-Feb-02 16:50 by ccai

38      10:24:20.636  02/26/02  Sev=Info/5      IKE/0x6300000E
MODE_CFG_REPLY: Attribute = MODECFG_UNITY_DEFDOMAIN: , value = cisco.com

39      10:24:20.646  02/26/02  Sev=Info/4      CM/0x63100019
Mode Config data received

40      10:24:20.676  02/26/02  Sev=Info/5      IKE/0x63000055
Received a key request from Driver for IP address 172.18.124.159, GW IP = 17$

41      10:24:20.676  02/26/02  Sev=Info/4      IKE/0x63000013
SENDING >>> ISAKMP OAK QM *(HASH, SA, NON, ID, ID) to 172.18.124.159

42      10:24:20.676  02/26/02  Sev=Info/5      IKE/0x63000055
Received a key request from Driver for IP address 10.10.10.255, GW IP = 172.$

43      10:24:20.676  02/26/02  Sev=Info/4      IKE/0x63000013
SENDING >>> ISAKMP OAK QM *(HASH, SA, NON, ID, ID) to 172.18.124.159

44      10:24:20.967  02/26/02  Sev=Info/4      IPSEC/0x63700014
```

Deleted all keys

45 10:24:20.987 02/26/02 Sev=Info/5 IKE/0x6300002F  
Received ISAKMP packet: peer = 172.18.124.159

46 10:24:20.987 02/26/02 Sev=Info/4 IKE/0x63000014  
RECEIVING <<< ISAKMP OAK QM \*(HASH, SA, NON, ID,  
ID, NOTIFY:STATUS\_RESP\_LIFE\$

47 10:24:20.987 02/26/02 Sev=Info/5 IKE/0x63000044  
RESPONDER-LIFETIME notify has value of 3600 seconds

48 10:24:20.987 02/26/02 Sev=Info/5 IKE/0x63000045  
RESPONDER-LIFETIME notify has value of 4608000 kb

49 10:24:20.987 02/26/02 Sev=Info/4 IKE/0x63000013  
SENDING >>> ISAKMP OAK QM \*(HASH) to 172.18.124.159

50 10:24:20.987 02/26/02 Sev=Info/5 IKE/0x63000058  
Loading IPsec SA (Message ID = 0x49D93B33 OUTBOUND SPI = 0x4637A127 INBOUND \$

51 10:24:20.987 02/26/02 Sev=Info/5 IKE/0x63000025  
Loaded OUTBOUND ESP SPI: 0x4637A127

52 10:24:20.987 02/26/02 Sev=Info/5 IKE/0x63000026  
Loaded INBOUND ESP SPI: 0xCE633EA8

53 10:24:20.987 02/26/02 Sev=Info/4 CM/0x6310001A  
One secure connection established

54 10:24:21.017 02/26/02 Sev=Info/6 DIALER/0x63300003  
Connection established.

55 10:24:21.357 02/26/02 Sev=Info/6 DIALER/0x63300008  
MAPI32 Information - Outlook not default mail client

56 10:24:21.617 02/26/02 Sev=Info/5 IKE/0x6300002F  
Received ISAKMP packet: peer = 172.18.124.159

57 10:24:21.617 02/26/02 Sev=Info/4 IKE/0x63000014  
RECEIVING <<< ISAKMP OAK QM \*(HASH, SA, NON, ID,  
ID, NOTIFY:STATUS\_RESP\_LIFE\$

58 10:24:21.617 02/26/02 Sev=Info/5 IKE/0x63000044  
RESPONDER-LIFETIME notify has value of 3600 seconds

59 10:24:21.617 02/26/02 Sev=Info/5 IKE/0x63000045  
RESPONDER-LIFETIME notify has value of 4608000 kb

60 10:24:21.617 02/26/02 Sev=Info/4 IKE/0x63000013  
SENDING >>> ISAKMP OAK QM \*(HASH) to 172.18.124.159

61 10:24:21.617 02/26/02 Sev=Info/5 IKE/0x63000058  
Loading IPsec SA (Message ID = 0x41AC9838 OUTBOUND SPI = 0x287931C6 INBOUND \$

62 10:24:21.617 02/26/02 Sev=Info/5 IKE/0x63000025  
Loaded OUTBOUND ESP SPI: 0x287931C6

63 10:24:21.617 02/26/02 Sev=Info/5 IKE/0x63000026  
Loaded INBOUND ESP SPI: 0x26EC8782

64 10:24:21.617 02/26/02 Sev=Info/4 CM/0x63100022  
Additional Phase 2 SA established.

65 10:24:21.617 02/26/02 Sev=Info/5 IKE/0x63000055  
Received a key request from Driver for IP address 14.38.100.10, GW IP = 172.5

66 10:24:21.617 02/26/02 Sev=Info/4 IKE/0x63000013  
SENDING >>> ISAKMP OAK QM \*(HASH, SA, NON, ID, ID) to 172.18.124.159

67 10:24:21.948 02/26/02 Sev=Info/5 IKE/0x6300002F  
Received ISAKMP packet: peer = 172.18.124.159

68 10:24:21.948 02/26/02 Sev=Info/4 IKE/0x63000014  
RECEIVING <<< ISAKMP OAK QM \*(HASH, SA, NON, ID,  
ID, NOTIFY:STATUS\_RESP\_LIFE\$

69 10:24:21.948 02/26/02 Sev=Info/5 IKE/0x63000044  
RESPONDER-LIFETIME notify has value of 3600 seconds

70 10:24:21.948 02/26/02 Sev=Info/5 IKE/0x63000045  
RESPONDER-LIFETIME notify has value of 4608000 kb

71 10:24:21.948 02/26/02 Sev=Info/4 IKE/0x63000013  
SENDING >>> ISAKMP OAK QM \*(HASH) to 172.18.124.159

72 10:24:21.948 02/26/02 Sev=Info/5 IKE/0x63000058  
Loading IPsec SA (Message ID = 0xCDC476F0 OUTBOUND SPI = 0xFDE4BA9C INBOUND \$

73 10:24:21.948 02/26/02 Sev=Info/5 IKE/0x63000025  
Loaded OUTBOUND ESP SPI: 0xFDE4BA9C

74 10:24:21.948 02/26/02 Sev=Info/5 IKE/0x63000026  
Loaded INBOUND ESP SPI: 0xDEA46284

75 10:24:21.948 02/26/02 Sev=Info/4 CM/0x63100022  
Additional Phase 2 SA established.

76 10:24:22.248 02/26/02 Sev=Info/4 IPSEC/0x63700010  
Created a new key structure

77 10:24:22.248 02/26/02 Sev=Info/4 IPSEC/0x6370000F  
Added key with SPI=0x27a13746 into key list

78 10:24:22.248 02/26/02 Sev=Info/4 IPSEC/0x63700010  
Created a new key structure

79 10:24:22.248 02/26/02 Sev=Info/4 IPSEC/0x6370000F  
Added key with SPI=0xa83e63ce into key list

80 10:24:22.248 02/26/02 Sev=Info/4 IPSEC/0x63700010

81 10:24:22.248 02/26/02 Sev=Info/4 IPSEC/0x6370000F  
Added key with SPI=0xc6317928 into key list

82 10:24:22.248 02/26/02 Sev=Info/4 IPSEC/0x63700010  
Created a new key structure

83 10:24:22.248 02/26/02 Sev=Info/4 IPSEC/0x6370000F  
Added key with SPI=0x8287ec26 into key list

84 10:24:22.248 02/26/02 Sev=Info/4 IPSEC/0x63700010  
Created a new key structure

85 10:24:22.248 02/26/02 Sev=Info/4 IPSEC/0x6370000F  
Added key with SPI=0x9cbae4fd into key list

86 10:24:22.248 02/26/02 Sev=Info/4 IPSEC/0x63700010  
Created a new key structure

87 10:24:22.248 02/26/02 Sev=Info/4 IPSEC/0x6370000F  
Added key with SPI=0x8462a4de into key list

## [Información Relacionada](#)

- [Soporte de Productos de Cisco VPN 3000 Concentrators](#)
- [Soporte del producto Cisco VPN 3000 Client](#)
- [Soporte de la Tecnología IPSec Negotiation/IKE Protocols](#)
- [Soporte Técnico y Documentación - Cisco Systems](#)