

Ejemplo de Configuración de LAN a LAN y EzVPN Client en PIX con Acceso de Cliente VPN a un Router Hub Usando Perfiles ISAKMP

Contenido

[Introducción](#)

[Prerequisites](#)

[Requirements](#)

[Componentes Utilizados](#)

[Convenciones](#)

[Configurar](#)

[Diagrama de la red](#)

[Configuraciones](#)

[Configuración de cliente VPN](#)

[Verificación](#)

[Depuraciones de LAN a LAN en el router hub VPN 1750 mediante debug crypto isakmp y debug crypto ipsec](#)

[La conexión de cliente EzVPN se depura utilizando debug crypto isakmp y debug crypto ipsec
VPN Client realiza la depuración en el extremo de PIX con debug crypto isakmp y debug crypto ipsec](#)

[Depuraciones en PIX 501 \(conexión de LAN a LAN\)](#)

[Depuraciones en PIX-506-B \(conexión de cliente EzVPN\)](#)

[Depuraciones en VPN Client](#)

[Troubleshoot](#)

[Comandos para resolución de problemas](#)

[Información Relacionada](#)

[Introducción](#)

Este documento proporciona un ejemplo para la configuración de túneles IPsec utilizando perfiles ISAKMP en un router concentrador con dos sitios remotos PIX. Un sitio remoto PIX consta de una conexión LAN a LAN y el otro consta de una configuración de modo de acceso remoto EzVPN. El router hub está configurado para realizar una autenticación local para los túneles EzVPN, y una autenticación RADIUS para el software VPN Client.

[Prerequisites](#)

[Requirements](#)

No hay requisitos específicos para este documento.

Componentes Utilizados

La información que contiene este documento se basa en las siguientes versiones de software y hardware.

- Cisco Secure PIX Firewall Appliance 501 que ejecuta 6.3(3)
- Router Cisco 1750 que ejecuta la versión 12.3.9a del software del IOS® de Cisco
- Cisco Secure PIX Firewall Appliance 506 que ejecuta 6.3(3)
- Cisco VPN Client que ejecuta 4.0 (Rel) (autenticación de usuario mediante servidor RADIUS)

The information in this document was created from the devices in a specific lab environment. All of the devices used in this document started with a cleared (default) configuration. If your network is live, make sure that you understand the potential impact of any command.

Convenciones

Consulte Convenciones de Consejos Técnicos de Cisco para obtener más información sobre las convenciones sobre documentos.

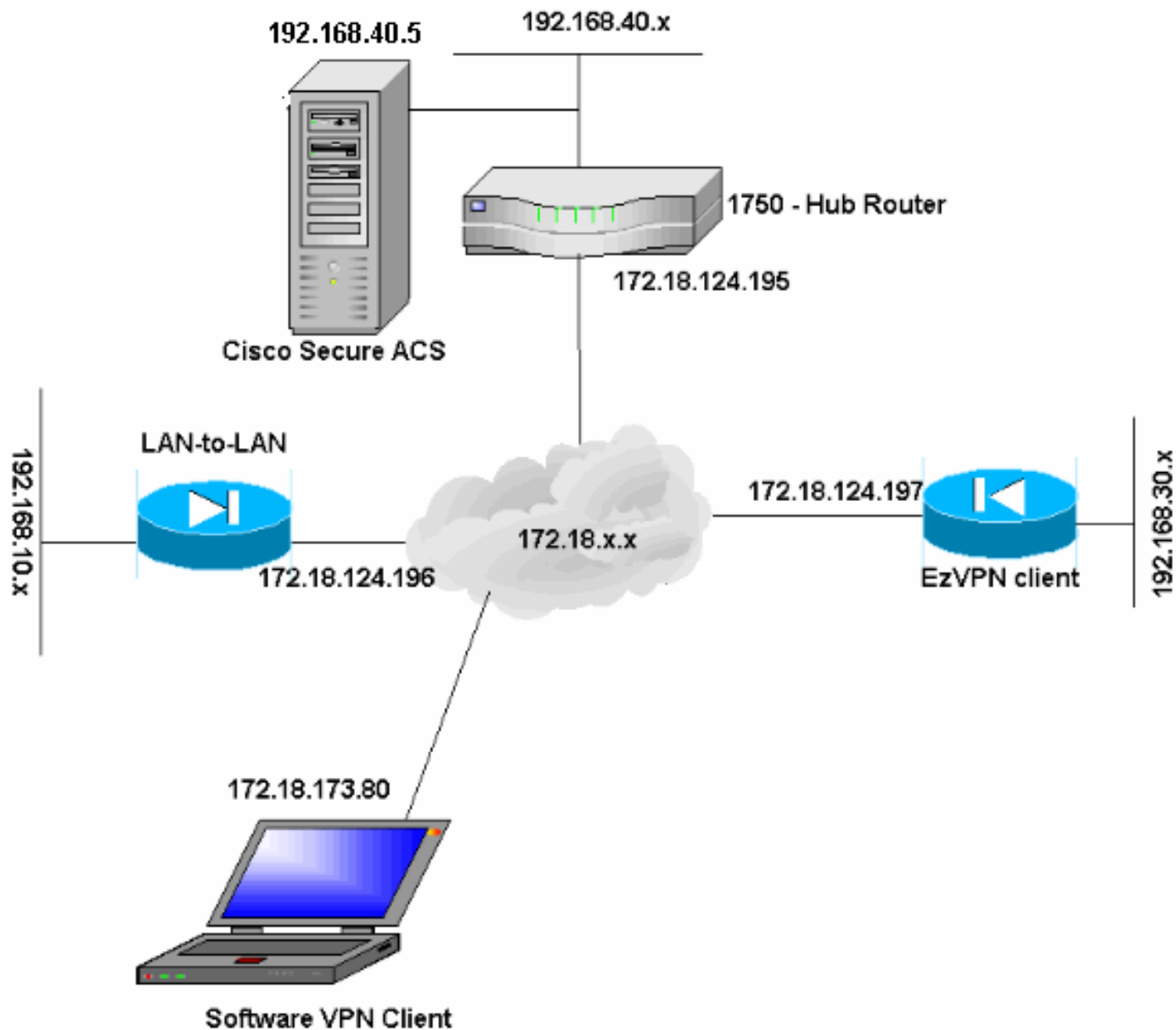
Configurar

En esta sección encontrará la información para configurar las funciones descritas en este documento.

Nota: Use la [Command Lookup Tool](#) (sólo [clientes registrados](#)) para encontrar información adicional sobre los comandos utilizados en este documento.

Diagrama de la red

En este documento, se utiliza esta configuración de red:



Configuraciones

En este documento, se utilizan estas configuraciones:

- [Router de eje de conexión VPN 1750](#)
- [PIX-501 – LAN a LAN](#)
- [Cliente PIX-506-B - EzVPN](#)
- [Cliente VPN](#)

Router de eje de conexión VPN 1750

```

version 12.3
service timestamps debug datetime msec
service timestamps log datetime msec
no service password-encryption
!
hostname VPN1750
!--- Local authentication username and password, for

```

```
EzVPN Client. username jerry password 0 wells123
username cisco password 0 letmein
!--- Enable AAA. aaa new-model
!
!
!--- Default local login. aaa authentication login
default local

!--- RADIUS authentication for VPN Client. aaa
authentication login userauth group radius local

!--- Local authentication for EzVPN Client. aaa
authentication login EZVPN local
aaa authorization exec default local

!--- Local group authorization for VPN Client. aaa
authorization network groupauthor local

!--- Local authorization for EzVPN Client. aaa
authorization network EZVPN local
aaa session-id common
ip subnet-zero
!
!
ip domain name cisco.com
!
ip cef
ip audit po max-events 100

!--- Keyring specification for Phase 1 authentication.
crypto keyring vpn
pre-shared-key address 172.18.124.196 key cisco123
!

!--- Specify ISAKMP policy. crypto isakmp policy 20
encr 3des
hash md5
authentication pre-share
group 2
!

!--- EzVPN Client configuration that specifies the
group, key and IP pool to use. crypto isakmp client
configuration group polo
key mark123
pool ezpool
!

!--- VPN Client configuration that specifies the group,
key and IP pool to use. crypto isakmp client
configuration group tennis
key matchpoint
domain cisco.com
pool vpnpool

!--- ISAKMP profile specification for LAN-to-LAN. crypto
isakmp profile l2lvpn
keyring vpn
match identity address 172.18.124.196 255.255.255.255

!--- ISAKMP profile specification for EzVPN Client.
crypto isakmp profile ezvpnprofile
match identity group polo
```

```
client authentication list EZVPN
isakmp authorization list EZVPN
client configuration address respond

!--- ISAKMP profile specification for software VPN
Client. crypto isakmp profile softclient
match identity group tennis
client authentication list userauth
isakmp authorization list groupauthor
client configuration address respond
!
!

!--- Set transform-set. crypto ipsec transform-set pix501
esp-3des esp-sha-hmac
crypto ipsec transform-set vpnclient esp-3des esp-sha-
hmac
crypto ipsec transform-set ezvpn esp-3des esp-md5-hmac
!

!--- Specify crypto map set and ISAKMP profile for VPN
Client. crypto dynamic-map rtpmap 10
set transform-set vpnclient
set isakmp-profile softclient

!--- Specify crypto map set and ISAKMP profile for EzVPN
Client. crypto dynamic-map rtpmap 20
set transform-set ezvpn
set isakmp-profile ezvpnprofile
!
!
crypto map rtp 5 ipsec-isakmp dynamic rtpmap

!--- Specify crypto map set and ISAKMP profile for LAN-
to-LAN. crypto map rtp 10 ipsec-isakmp
set peer 172.18.124.196
set transform-set pix501
set isakmp-profile 121vpn
match address 101
!
!
!
interface Ethernet0
ip address 192.168.40.1 255.255.255.0
!
interface FastEthernet0
ip address 172.18.124.195 255.255.255.0
speed auto

!--- Apply crypto map on the outside interface. crypto
map rtp
!

!--- VPN Client pool addresses. ip local pool vpnpool
10.50.50.1 10.50.50.10

!--- EzVPN Client pool addresses. ip local pool ezpool
172.25.70.1 172.25.70.10
ip classless
ip route 0.0.0.0 0.0.0.0 172.18.124.1
!

!--- Encryption access-list applied to the crypto map.
access-list 101 permit ip 192.168.40.0 0.0.0.255
```

```
192.168.10.0 0.0.0.255
!
!--- Define ACS server for VPN Client user
authentication. radius-server host 192.168.40.5 auth-
port 1645 acct-port 1646 key cisco123
!
line con 0
exec-timeout 0 0
line aux 0
line vty 0 4
!
end
```

PIX-501 – LAN a LAN

```
PIX Version 6.3(3)
interface ethernet0 auto
interface ethernet1 100full
nameif ethernet0 outside security0
nameif ethernet1 inside security100
enable password 8Ry2YjIyt7RRXU24 encrypted
passwd 2KFQnbNIdI.2KYOU encrypted
hostname PIX-501
domain-name cisco.com
fixup protocol dns maximum-length 512
fixup protocol ftp 21
fixup protocol h323 h225 1720
fixup protocol h323 ras 1718-1719
fixup protocol http 80
fixup protocol rsh 514
fixup protocol rtsp 554
fixup protocol sip 5060
fixup protocol sip udp 5060
fixup protocol skinny 2000
fixup protocol smtp 25
fixup protocol sqlnet 1521
fixup protocol tftp 69
names

!--- Encryption access-list for interesting traffic to
be encrypted. access-list 101 permit ip 192.168.10.0
255.255.255.0 192.168.40.0 255.255.255.0

!--- NAT 0 access-list for encryption traffic to bypass
NAT process. access-list nonat permit ip 192.168.10.0
255.255.255.0 192.168.40.0 255.255.255.0
pager lines 24
mtu outside 1500
mtu inside 1500
ip address outside 172.18.124.196 255.255.255.0
ip address inside 192.168.10.1 255.255.255.0
ip audit info action alarm
ip audit attack action alarm
pdm history enable
arp timeout 14400
global (outside) 1 interface

!--- Bypass NAT for IPsec traffic. nat (inside) 0
access-list nonat
nat (inside) 1 192.168.10.0 255.255.255.0 0 0
route outside 0.0.0.0 0.0.0.0 172.18.124.1 1
timeout xlate 3:00:00
```

```
timeout conn 1:00:00 half-closed 0:10:00 udp 0:02:00 rpc
0:10:00 h225 1:00:00
timeout h323 0:05:00 mgcp 0:05:00 sip 0:30:00 sip_media
0:02:00
timeout uauth 0:05:00 absolute
aaa-server TACACS+ protocol tacacs+
aaa-server RADIUS protocol radius
aaa-server LOCAL protocol local
floodguard enable

!--- This command avoids applied ACLs or conduits on
encrypted packets. sysopt connection permit-ipsec

!--- Configuration of IPsec Phase 2. crypto ipsec
transform-set fox esp-3des esp-sha-hmac
crypto map fox 10 ipsec-isakmp
crypto map fox 10 match address 101
crypto map fox 10 set peer 172.18.124.195
crypto map fox 10 set transform-set fox
crypto map fox interface outside

!--- Configuration of IPsec Phase 1. isakmp enable
outside

!--- IKE pre-shared key used by peers to authenticate.
isakmp key ***** address 172.18.124.195 netmask
255.255.255.255
isakmp identity address
isakmp policy 10 authentication pre-share
isakmp policy 10 encryption 3des
isakmp policy 10 hash md5
isakmp policy 10 group 2
isakmp policy 10 lifetime 86400
telnet timeout 5
ssh timeout 5
console timeout 0
terminal width 80
Cryptochecksum:9e09996cdf390036841e71da006ba1f1
: end
```

Cliente PIX-506-B - EzVPN

```
PIX Version 6.3(3)
interface ethernet0 auto
interface ethernet1 auto
nameif ethernet0 outside security0
nameif ethernet1 inside security100
enable password 8Ry2YjIyt7RRXU24 encrypted
passwd 2KFQnbNIdI.2KYOU encrypted
hostname PIX-506-B
fixup protocol dns maximum-length 512
fixup protocol ftp 21
fixup protocol h323 h225 1720
fixup protocol h323 ras 1718-1719
fixup protocol http 80
fixup protocol rsh 514
fixup protocol rtsp 554
fixup protocol sip 5060
fixup protocol sip udp 5060
fixup protocol skinny 2000
fixup protocol smtp 25
fixup protocol sqlnet 1521
fixup protocol tftp 69
```

```

names
pager lines 24
mtu outside 1500
mtu inside 1500

!--- Define IP addresses for the PIX's inside and
outside interfaces. ip address outside 172.18.124.197
255.255.255.0
ip address inside 192.168.30.1 255.255.255.0
ip audit info action alarm
ip audit attack action alarm
pdm history enable
arp timeout 14400
global (outside) 1 interface
nat (inside) 1 192.168.30.0 255.255.255.0 0 0
route outside 0.0.0.0 0.0.0.0 172.18.124.1 1
timeout xlate 3:00:00
timeout conn 1:00:00 half-closed 0:10:00 udp 0:02:00 rpc
0:10:00 h225 1:00:00
timeout h323 0:05:00 mgcp 0:05:00 sip 0:30:00 sip_media
0:02:00
timeout uauth 0:05:00 absolute
aaa-server TACACS+ protocol tacacs+
aaa-server RADIUS protocol radius
aaa-server LOCAL protocol local
floodguard enable
sysopt connection permit-ipsec
crypto ipsec transform-set tiger esp-3des esp-md5-hmac
telnet timeout 5
ssh timeout 5
console timeout 0

!--- Define the EzVPN server IP address. vpnclient
server 172.18.124.195

!--- Specify the mode to be used (client-mode or Network
Extension Mode). vpnclient mode client-mode

!--- Define EzVPN connection parameters. vpnclient
vpngroup polo password *****
vpnclient username jerry password *****

!--- Enable VPN Client on the PIX. vpnclient enable
terminal width 80
Cryptochecksum:1bb41de13c5e15537a50cb1f39f131b9
: end

```

Configuración de cliente VPN

Complete estos pasos para configurar el VPN Client.

1. Inicie VPN Client y cree una nueva conexión con los parámetros de entrada de conexión requeridos.

The screenshot shows the 'VPN Client | Properties for "ISAKMP_Softclient"' dialog box. It contains the following fields and options:

- Connection Entry: ISAKMP_Softclient
- Description: ISAKMP Profile VPN Client
- Host: 172.18.124.195
- Authentication tabs: Authentication (selected), Transport, Backup Servers, Dial-Up
- Group Authentication (selected):
 - Name: tennis
 - Password: [masked]
 - Confirm Password: [masked]
- Certificate Authentication (unselected):
 - Name: [dropdown menu]
 - Send CA Certificate Chain
- Buttons: Erase User Password, Save, Cancel

- Una vez creada la entrada de conexión, haga clic en Connect (Conectar) y realice la autenticación con los parámetros de usuario configurados en el servidor

The screenshot shows the 'VPN Client | User Authentication for "ISAKMP_Softclient"' dialog box. It features the Cisco Systems logo and the following fields:

- Username: ggeorge
- Password: [masked]
- Buttons: OK, Cancel

RADIUS.

Verificación

En esta sección encontrará información que puede utilizar para confirmar que su configuración esté funcionando correctamente. Refiérase a [Solución de Problemas de Seguridad IP - Comprensión y Uso de los Comandos de debug](#) para verificación/Troubleshooting adicional. Si debe encontrar algún problema o error de VPN Client, consulte la [Herramienta de Búsqueda de Errores de GUI de VPN Client](#).

La herramienta [Output Interpreter](#) (sólo para clientes registrados) permite utilizar algunos comandos "show" y ver un análisis del resultado de estos comandos.

- **show crypto isakmp profile** —Muestra todos los perfiles ISAKMP y sus configuraciones en el router.
- **show crypto isakmp key**—Muestra todos los anillos de claves y sus claves previamente compartidas. Utilice este comando para verificar la configuración del anillo fundamental con criptografía en el router.
- **debug crypto ipsec**: muestra información sobre las negociaciones SA IPsec en el router.
- **debug crypto isakmp**: muestra la SA ISAKMP que se genera y los atributos IPsec que se negocian. Durante la negociación ISAKMP SA, el PIX podría descartar varias propuestas como "no aceptables" antes de que se acepte una. Una vez que se haya acordado el ISAKMP SA, se negocian los atributos IPsec.

[Depuraciones de LAN a LAN en el router hub VPN 1750 mediante debug crypto isakmp y debug crypto ipsec](#)

```

May 11 20:44:51.370: ISAKMP (0:0): received packet
                        from 172.18.124.196 dport 500 sport 500 Global
                        (N) NEW SA
May 11 20:44:51.370: ISAKMP: local port 500, remote port 500
May 11 20:44:51.370: ISAKMP: insert sa successfully sa = 81789610
May 11 20:44:51.374: ISAKMP (0:1): Input = IKE_MSG_FROM_PEER, IKE_MM_EXCH
May 11 20:44:51.374: ISAKMP (0:1): Old State = IKE_READY New State = IKE_R_MM1

May 11 20:44:51.374: ISAKMP (0:1): processing SA payload. message ID = 0
May 11 20:44:51.374: ISAKMP: Looking for a matching key for 172.18.124.196
                        in default
May 11 20:44:51.374: ISAKMP: Looking for a matching key for 172.18.124.196
                        in vpn : success
May 11 20:44:51.374: ISAKMP (0:1): found peer pre-shared key matching
                        172.18.124.196
May 11 20:44:51.378: ISAKMP (0:1) local preshared key found
May 11 20:44:51.378: ISAKMP : Scanning profiles for xauth ... l2lvpn ezvpnprofile
May 11 20:44:51.378: ISAKMP (0:1) Authentication by xauth preshared
May 11 20:44:51.378: ISAKMP (0:1): Checking ISAKMP transform 1 against
                        priority 20 policy
May 11 20:44:51.378: ISAKMP: encryption 3DES-CBC
May 11 20:44:51.378: ISAKMP: hash MD5
May 11 20:44:51.378: ISAKMP: default group 2
May 11 20:44:51.378: ISAKMP: auth pre-share
May 11 20:44:51.378: ISAKMP: life type in seconds
May 11 20:44:51.378: ISAKMP: life duration (VPI) of 0x0 0x1 0x51 0x80
May 11 20:44:51.382: ISAKMP (0:1): atts are acceptable. Next payload is 0
      !--- Phase 1 proposal accepted. May 11 20:44:51.598: ISAKMP (0:1): Input = IKE_MSG_INTERNAL,
      IKE_PROCESS_MAIN_MODE May 11 20:44:51.598: ISAKMP (0:1): Old State = IKE_R_MM1 New State =
      IKE_R_MM1 May 11 20:44:51.602: ISAKMP (0:1): sending packet to 172.18.124.196 my_port 500
      peer_port 500 (R) MM_SA_SETUP May 11 20:44:51.602: ISAKMP (0:1): Input = IKE_MSG_INTERNAL,
      IKE_PROCESS_COMPLETE May 11 20:44:51.602: ISAKMP (0:1): Old State = IKE_R_MM1 New State =
      IKE_R_MM2 May 11 20:44:52.130: ISAKMP (0:1): received packet from 172.18.124.196 dport 500 sport
      500 Global (R) MM_SA_SETUP May 11 20:44:52.130: ISAKMP (0:1): Input = IKE_MSG_FROM_PEER,
      IKE_MM_EXCH May 11 20:44:52.130: ISAKMP (0:1): Old State = IKE_R_MM2 New State = IKE_R_MM3
      ..... May 11 20:44:52.954: ISAKMP (0:1): processing ID payload. message ID = 0 May 11
      20:44:52.954: ISAKMP (0:1): ID payload next-payload : 8 type : 1 address : 172.18.124.196
      protocol : 17 port : 500 length : 12 May 11 20:44:52.958: ISAKMP (0:1): peer matches l2lvpn
      profile
      !--- ISAKMP profile is matched in the router for LAN-to-LAN configuration. May 11 20:44:52.958:
      ISAKMP: Looking for a matching key for 172.18.124.196 in default May 11 20:44:52.958: ISAKMP:
      Looking for a matching key for 172.18.124.196
                        in vpn : success
May 11 20:44:52.958: ISAKMP (0:1): Found ADDRESS key in keyring vpn

```

```

May 11 20:44:52.958: ISAKMP (0:1): processing HASH payload. message ID = 0
May 11 20:44:52.958: ISAKMP (0:1): SA authentication status: authenticated
  !--- Security Associations are authenticated between the peers. May 11 20:44:52.994: ISAKMP
(0:1): Old State = IKE_P1_COMPLETE
                New State = IKE_P1_COMPLETE
  !--- Phase 1 negotiations completed. .... May 11 20:44:53.002: ISAKMP (0:1): Checking IPsec
proposal 1 May 11 20:44:53.002: ISAKMP: transform 1, ESP_3DES May 11 20:44:53.002: ISAKMP:
attributes in transform: May 11 20:44:53.002: ISAKMP: encaps is 1 (Tunnel) May 11 20:44:53.002:
ISAKMP: SA life type in seconds May 11 20:44:53.002: ISAKMP: SA life duration (basic) of 28800
May 11 20:44:53.002: ISAKMP: SA life type in kilobytes May 11 20:44:53.002: ISAKMP: SA life
duration (VPI) of 0x0 0x46 0x50 0x0 May 11 20:44:53.002: ISAKMP: authenticator is HMAC-SHA May
11 20:44:53.006: ISAKMP (0:1): atts are acceptable.
  !--- Phase 2 proposal accepted. May 11 20:44:53.006: IPSEC(validate_proposal_request): proposal
part #1, (key eng. msg.) INBOUND local= 172.18.124.195, remote= 172.18.124.196,
local_proxy= 192.168.40.0/255.255.255.0/0/0 (type=4),
remote_proxy= 192.168.10.0/255.255.255.0/0/0 (type=4),
  !--- Encryption access-list verification process. protocol= ESP, transform= esp-3des esp-sha-
hmac (Tunnel), lifedur= 0s and 0kb, spi= 0x0(0), conn_id= 0, keysize= 0, flags= 0x2 ... May 11
20:44:53.282: IPSEC(create_sa): sa created,
(sa) sa_dest= 172.18.124.195, sa_prot= 50,
sa_spi= 0xFBFA852C(4227499308),
sa_trans= esp-3des esp-sha-hmac , sa_conn_id= 2000
May 11 20:44:53.282: IPSEC(create_sa): sa created,
(sa) sa_dest= 172.18.124.196, sa_prot= 50,
sa_spi= 0x79EFEFCE(2045767630),
sa_trans= esp-3des esp-sha-hmac , sa_conn_id= 2001
  !--- SAs are created with connection IDs. May 11 20:44:53.290: ISAKMP (0:1): received packet
from 172.18.124.196 dport 500 sport 500 Global (R) QM_IDLE
  !--- Tunnel has been established. May 11 20:44:53.294: ISAKMP (0:1): deleting node 156512779
error FALSE reason "quick mode done (await)" May 11 20:44:53.294: ISAKMP (0:1): Node 156512779,
Input = IKE_MSG_FROM_PEER, IKE_QM_EXCH May 11 20:44:53.294: ISAKMP (0:1): Old State =
IKE_QM_R_QM2
                New State = IKE_QM_PHASE2_COMPLETE
  !--- Phase 2 negotiations complete.

```

[La conexión de cliente EzVPN se depura utilizando debug crypto isakmp y debug crypto ipsec](#)

```

May 11 20:55:47.266: ISAKMP (0:0): received packet from 172.18.124.197
                dport 500 sport 500 Global (N) NEW SA
May 11 20:55:47.266: ISAKMP: local port 500, remote port 500
May 11 20:55:47.270: ISAKMP: insert sa successfully sa = 81797590
May 11 20:55:47.270: ISAKMP (0:2): processing SA payload. message ID = 0
May 11 20:55:47.270: ISAKMP (0:2): processing ID payload. message ID = 0
May 11 20:55:47.274: ISAKMP (0:2): ID payload
next-payload : 13
type : 11
group id : polo
protocol : 17
port : 0
length : 12
May 11 20:55:47.274: ISAKMP (0:2): peer matches ezvpnprofile profile
  !--- Profile match for EzVPN Client connection. May 11 20:55:47.274: ISAKMP: Looking for a
matching key for 172.18.124.197 in default May 11 20:55:47.274: ISAKMP: Looking for a matching
key for 172.18.124.197 in vpn May 11 20:55:47.274: ISAKMP: Created a peer struct for
172.18.124.197, peer port 500 May 11 20:55:47.274: ISAKMP: Locking peer struct 0x81791484, IKE
refcount 1 for crypto_ikmp_config_initialize_sa ... May 11 20:55:47.282: ISAKMP (0:2): Checking
ISAKMP transform 1 against
                priority 20 policy
  !--- ISAKMP policies are checked. May 11 20:55:47.282: ISAKMP: encryption AES-CBC May 11
20:55:47.282: ISAKMP: keylength of 256 May 11 20:55:47.282: ISAKMP: hash SHA May 11
20:55:47.282: ISAKMP: default group 2 May 11 20:55:47.282: ISAKMP: auth XAUTHInitPreShared May

```

11 20:55:47.282: ISAKMP: life type in seconds May 11 20:55:47.282: ISAKMP: life duration (VPI) of 0x0 0x1 0x51 0x80 May 11 20:55:47.282: ISAKMP (0:2): Encryption algorithm offered does not match policy! May 11 20:55:47.286: ISAKMP (0:2): atts are not acceptable. Next payload is 3 ...
May 11 20:55:47.306: ISAKMP (0:2): Checking ISAKMP transform 8 against priority 20 policy
May 11 20:55:47.306: ISAKMP: encryption 3DES-CBC
May 11 20:55:47.306: ISAKMP: hash MD5
May 11 20:55:47.306: ISAKMP: default group 2
May 11 20:55:47.306: ISAKMP: auth XAUTHInitPreShared
May 11 20:55:47.306: ISAKMP: life type in seconds
May 11 20:55:47.310: ISAKMP: life duration (VPI) of 0x0 0x1 0x51 0x80
May 11 20:55:47.310: ISAKMP (0:2): atts are acceptable. Next payload is 3
!--- Phase 1 attributes are validated. May 11 20:55:47.530: ISAKMP (0:2): processing KE payload. message ID = 0 May 11 20:55:47.798: ISAKMP (0:2): processing NONCE payload. message ID = 0 May 11 20:55:47.802: ISAKMP (0:2): vendor ID is NAT-T v3 May 11 20:55:47.802: ISAKMP (0:2): vendor ID is NAT-T v2 May 11 20:55:47.802: ISAKMP (0:2): Input = IKE_MSG_FROM_PEER, IKE_AM_EXCH May 11 20:55:47.802: ISAKMP (0:2): Old State = IKE_READY New State = IKE_R_AM_AAA_AWAIT May 11 20:55:47.806: ISAKMP: got callback 1 May 11 20:55:47.810: ISAKMP (0:2): SKEYID state generated May 11 20:55:47.810: ISAKMP (0:2): constructed NAT-T vendor-03 ID May 11 20:55:47.810: ISAKMP (0:2): SA is doing pre-shared key authentication plus XAUTH using id type ID_IPV4_ADDR May 11 20:55:47.814: ISAKMP (0:2): ID payload next-payload : 10 type : 1 address : 172.18.124.195 protocol : 17 port : 0 length : 12 May 11 20:55:47.814: ISAKMP (2): Total payload length: 12 May 11 20:55:47.814: ISAKMP (0:2): sending packet to 172.18.124.197 my_port 500 peer_port 500 (R) AG_INIT_EXCH May 11 20:55:47.814: ISAKMP (0:2): Input = IKE_MSG_FROM_AAA, PRESHARED_KEY_REPLY May 11 20:55:47.818: ISAKMP (0:2): Old State = IKE_R_AM_AAA_AWAIT New State = IKE_R_AM2 May 11 20:55:49.114: ISAKMP (0:2): received packet from 172.18.124.197 dport 500 sport 500 Global (R) AG_INIT_EXCH May 11 20:55:49.114: ISAKMP:received payload type 20 May 11 20:55:49.118: ISAKMP:received payload type 20 May 11 20:55:49.118: ISAKMP (0:2): processing HASH payload. message ID = 0 May 11 20:55:49.118: ISAKMP (0:2): processing NOTIFY INITIAL_CONTACT protocol 1 spi 0, message ID = 0, sa = 81797590 **May 11 20:55:49.118: ISAKMP (0:2): SA authentication status: authenticated**
!--- Phase 1 has been authenticated. May 11 20:55:49.118: ISAKMP (0:2): Process initial contact, bring down existing phase 1 and 2 SA's with local 172.18.124.197 authentication status: authenticated May 11 20:55:49.122: ISAKMP (0:2): SA has been authenticated with 172.18.124.197 May 11 20:55:49.122: ISAKMP: Trying to insert a peer 172.18.124.195/172.18.124.197/500/, and inserted successfully. May 11 20:55:49.126: ISAKMP: **set new node 1554218001 to CONF_XAUTH**
!--- User authentication phase starts. May 11 20:55:49.126: ISAKMP (0:2): sending packet to 172.18.124.197 my_port 500 peer_port 500 (R) QM_IDLE May 11 20:55:49.126: ISAKMP (0:2): purging node 155421800118.124.195 remote 172.18.124.197 remote port 500 May 11 20:55:49.130: ISAKMP (0:2): Input = IKE_MSG_FROM_PEER, IKE_AM_EXCH May 11 20:55:49.130: ISAKMP (0:2): Old State = IKE_R_AM2 New State = IKE_P1_COMPLETE May 11 20:55:49.130: ISAKMP (0:2): **Need XAUTH**
May 11 20:55:49.130: ISAKMP (0:2): FSM action returned error: 4
May 11 20:55:49.134: ISAKMP (0:2): Input = IKE_MSG_INTERNAL, IKE_PHASE1_COMPLETE
May 11 20:55:49.134: ISAKMP (0:2): Old State = IKE_P1_COMPLETE
New State = IKE_XAUTH_AAA_START_LOGIN_AWAIT

May 11 20:55:49.134: ISAKMP: got callback 1
May 11 20:55:49.134: ISAKMP: set new node -1233989434 to CONF_XAUTH
May 11 20:55:49.134: ISAKMP/xauth: **request attribute XAUTH_USER_NAME_V2**
!--- Username request. May 11 20:55:49.134: ISAKMP/xauth: **request attribute XAUTH_USER_PASSWORD_V2**
!--- Password request. May 11 20:55:49.138: ISAKMP (0:2): initiating peer config to 172.18.124.197. ID = -1233989434 May 11 20:55:49.138: ISAKMP (0:2): sending packet to 172.18.124.197 my_port 500 peer_port 500 (R) CONF_XAUTH ... May 11 20:55:51.278: ISAKMP: got callback 1 May 11 20:55:51.278: ISAKMP (0:2): attributes sent in message: May 11 20:55:51.278: Address: 240.2.112.2 May 11 20:55:51.282: ISAKMP (0:2): **allocating address 172.25.70.6**
!--- IP address assigned to EzVPN Client from the address pool. May 11 20:55:51.282: ISAKMP: Sending private address: 172.25.70.6 May 11 20:55:51.286: ISAKMP: Sending APPLICATION_VERSION string: Cisco Internetwork Operating System Software IOS (tm) C1700 Software (C1700-K9O3SY7-M), Version 12.3(9a), RELEASE SOFTWARE (fc4) Copyright (c) 1986-2004 by cisco Systems, Inc. Compiled Fri 23-Jul-04 02:20 by kellythw May 11 20:55:51.286: ISAKMP (0:2): responding to peer config from 172.18.124.197. ID = -591421152 May 11 20:55:51.290: ISAKMP (0:2): sending packet to 172.18.124.197 my_port 500 peer_port 500 (R) CONF_ADDR May 11 20:55:51.290: ISAKMP (0:2): deleting node -591421152 error FALSE reason "" May 11 20:55:51.290: ISAKMP (0:2): Input =

IKE_MSG_FROM_AAA, IKE_AAA_GROUP_ATTR May 11 20:55:51.290: ISAKMP (0:2): Old State =
IKE_CONFIG_AUTHOR_AAA_AWAIT New State = IKE_P1_COMPLETE May 11 20:55:51.294: ISAKMP (0:2): Input
= IKE_MSG_INTERNAL, IKE_PHASE1_COMPLETE May 11 20:55:51.294: ISAKMP (0:2): Old State =
IKE_P1_COMPLETE New State = IKE_P1_COMPLETE May 11 20:55:53.102: ISAKMP (0:2): received packet
from 172.18.124.197 dport 500 sport 500 Global (R) QM_IDLE May 11 20:55:53.102: ISAKMP: set new
node -183955662 to QM_IDLE ... May 11 20:55:53.178: ISAKMP (0:2): IPsec policy invalidated
proposal May 11 20:55:53.178: ISAKMP (0:2): Checking IPsec proposal 8 May 11 20:55:53.178:
ISAKMP: transform 1, ESP_3DES May 11 20:55:53.178: ISAKMP: attributes in transform: May 11
20:55:53.178: ISAKMP: encaps is 1 (Tunnel) May 11 20:55:53.178: ISAKMP: SA life type in seconds
May 11 20:55:53.182: ISAKMP: SA life duration (basic) of 28800 May 11 20:55:53.182: ISAKMP: SA
life type in kilobytes May 11 20:55:53.182: ISAKMP: SA life duration (VPI) of 0x0 0x46 0x50 0x0
May 11 20:55:53.182: ISAKMP: authenticator is HMAC-MD5 May 11 20:55:53.182: ISAKMP (0:2): **atts
are acceptable.**

!--- Proposals are validated. May 11 20:55:53.182: IPSEC(validate_proposal_request): proposal
part #1, (key eng. msg.) INBOUND local= 172.18.124.195, remote= 172.18.124.197, local_proxy=
0.0.0.0/0.0.0.0/0 (type=4), remote_proxy= 172.25.70.6/255.255.255.255/0/0 (type=1), protocol=
ESP, transform= esp-3des esp-md5-hmac (Tunnel), lifedur= 0s and 0kb, spi= 0x0(0), conn_id= 0,
keysize= 0, flags= 0x2 ... local_proxy= 0.0.0.0/0.0.0.0/0 (type=4), remote_proxy=
172.25.70.6/0.0.0.0/0 (type=1), protocol= ESP, transform= esp-3des esp-md5-hmac (Tunnel),
lifedur= 28800s and 4608000kb, spi= 0x866452A1(2254721697), conn_id= 2002, keyspace= 0, flags=
0x2 May 11 20:55:53.458: IPSEC(initialize_sas): , (key eng. msg.) OUTBOUND local=
172.18.124.195, remote= 172.18.124.197, local_proxy= 0.0.0.0/0.0.0.0/0 (type=4), remote_proxy=
172.25.70.6/0.0.0.0/0 (type=1), protocol= ESP, transform= esp-3des esp-md5-hmac (Tunnel),
lifedur= 28800s and 4608000kb, spi= 0xCA8A5934(3398064436), conn_id= 2003, keyspace= 0, flags=
0xA May 11 20:55:53.458: IPSEC(kei_proxy): head = rtp, map->ivrf = , kei->ivrf = May 11
20:55:53.458: IPSEC(kei_proxy): head = rtp, map->ivrf = , kei->ivrf = May 11 20:55:53.462:
IPSEC(kei_proxy): head = rtp, map->ivrf = , kei->ivrf = May 11 20:55:53.462: IPSEC(add mtree):
src 172.18.124.195, dest 172.25.70.6, dest_port 0 **May 11 20:55:53.462: IPSEC(create_sa): sa
created,**

**(sa) sa_dest= 172.18.124.195, sa_prot= 50,
sa_spi= 0x866452A1(2254721697),
sa_trans= esp-3des esp-md5-hmac , sa_conn_id= 2002
May 11 20:55:53.462: IPSEC(create_sa): sa created,
(sa) sa_dest= 172.18.124.197, sa_prot= 50,
sa_spi= 0xCA8A5934(3398064436),
sa_trans= esp-3des esp-md5-hmac , sa_conn_id= 2003**

!--- Security Association Connection IDs. May 11 20:55:54.442: ISAKMP (0:2): received packet
from 172.18.124.197 dport 500 sport 500 Global (R) QM_IDLE May 11 20:55:54.446: ISAKMP (0:2):
deleting node -183955662 error FALSE reason "quick mode done (await)" May 11 20:55:54.446:
ISAKMP (0:2): Node -183955662, Input = IKE_MSG_FROM_PEER, IKE_QM_EXCH May 11 20:55:54.446:
ISAKMP (0:2): Old State = IKE_QM_R_QM2 New State = IKE_QM_PHASE2_COMPLETE May 11 20:55:54.446:
IPSEC(key_engine): got a queue event... May 11 20:55:54.446: IPSEC(key_engine_enable_outbound):
rec'd enable notify from ISAKMP May 11 20:55:54.446: IPSEC(key_engine_enable_outbound): enable
SA with spi 3398064436/50 for 172.18.124.197 May 11 20:55:57.450: ISAKMP (0:2): received packet
from 172.18.124.197 dport 500 sport 500 Global (R) QM_IDLE May 11 20:55:57.450: ISAKMP: set new
node -1115155724 to QM_IDLE May 11 20:55:57.454: ISAKMP (0:2): processing HASH payload. message
ID = -1115155724 May 11 20:55:57.458: ISAKMP (0:2): processing SA payload. message ID = -
1115155724 May 11 20:55:57.458: ISAKMP (0:2): Checking IPsec proposal 1 May 11 20:55:57.458:
ISAKMP: transform 1, ESP_AES May 11 20:55:57.458: ISAKMP: attributes in transform: May 11
20:55:57.458: ISAKMP: encaps is 1 (Tunnel) May 11 20:55:57.458: ISAKMP: SA life type in seconds
May 11 20:55:57.458: ISAKMP: SA life duration (basic) of 28800 May 11 20:55:57.458: ISAKMP: SA
life type in kilobytes May 11 20:55:57.458: ISAKMP: SA life duration (VPI) of 0x0 0x46 0x50 0x0
May 11 20:55:57.458: ISAKMP: authenticator is HMAC-SHA May 11 20:55:57.458: ISAKMP: key length
is 256 May 11 20:55:57.462: ISAKMP (0:2): **atts are acceptable.**

May 11 20:55:57.462: IPSEC(validate_proposal_request): proposal part #1,
(key eng. msg.) INBOUND local= 172.18.124.195, remote= 172.18.124.197,
local_proxy= 0.0.0.0/0.0.0.0/0 (type=4),
remote_proxy= 172.18.124.197/255.255.255.255/0/0 (type=1),
protocol= ESP, transform= esp-aes 256 esp-sha-hmac (Tunnel),
lifedur= 0s and 0kb,
spi= 0x0(0), conn_id= 0, keyspace= 256, flags= 0x2

...

May 11 20:55:58.362: ISAKMP (0:2): sending packet to 172.18.124.197

```
my_port 500 peer_port 500 (R) QM_IDLE
!--- Confirmation of tunnel establishment. May 11 20:55:58.362: ISAKMP (0:2): Node -1115155724,
Input = IKE_MSG_FROM_IPSEC, IKE_SPI_REPLY May 11 20:55:59.438: ISAKMP (0:2): received packet
from 172.18.124.197 dport 500 sport 500 Global (R) QM_IDLE May 11 20:55:59.438: ISAKMP (0:2):
deleting node -1115155724 error FALSE reason "quick mode done (await)" May 11 20:55:59.442:
ISAKMP (0:2): Node -1115155724, Input = IKE_MSG_FROM_PEER, IKE_QM_EXCH May 11 20:55:59.442:
ISAKMP (0:2): Old State = IKE_QM_R_QM2 New State = IKE_QM_PHASE2_COMPLETE
```

[VPN Client realiza la depuración en el extremo de PIX con debug crypto isakmp y debug crypto ipsec](#)

```
May 11 21:16:52.154: ISAKMP (0:0): received packet from 172.18.173.80 dport 500
sport 500 Global (N) NEW SA
```

```
May 11 21:16:52.154: ISAKMP: local port 500, remote port 500
```

```
May 11 21:16:52.158: ISAKMP: insert sa successfully sa = 8179D054
```

```
May 11 21:16:52.158: ISAKMP (0:3): processing SA payload. message ID = 0
```

```
May 11 21:16:52.158: ISAKMP (0:3): processing ID payload. message ID = 0
```

```
May 11 21:16:52.158: ISAKMP (0:3): ID payload
```

```
next-payload : 13
```

```
type : 11
```

```
group id : tennis
```

```
protocol : 17
```

```
port : 500
```

```
length : 14
```

```
May 11 21:16:52.158: ISAKMP (0:3): peer matches softclient profile
```

```
!--- ISAKMP profile match for VPN Software Clients. May 11 21:16:52.158: ISAKMP: Looking for a
matching key for 172.18.173.80 in default May 11 21:16:52.158: ISAKMP: Looking for a matching
key for 172.18.173.80 in vpn May 11 21:16:52.158: ISAKMP: Created a peer struct for
172.18.173.80, peer port 500 May 11 21:16:52.162: ISAKMP: Locking peer struct 0x81791484, IKE
refcount 1 for crypto_ikmp_config_initialize_sa May 11 21:16:52.162: ISAKMP (0:3): Setting
client config settings 81EEB340 May 11 21:16:52.162: ISAKMP (0:3): (Re)Setting client xauth list
and state May 11 21:16:52.162: ISAKMP (0:3): processing vendor id payload May 11 21:16:52.162:
ISAKMP (0:3): vendor ID seems Unity/DPD but major 215 mismatch May 11 21:16:52.162: ISAKMP
(0:3): vendor ID is XAUTH May 11 21:16:52.162: ISAKMP (0:3): processing vendor id payload May 11
21:16:52.162: ISAKMP (0:3): vendor ID is DPD May 11 21:16:52.162: ISAKMP (0:3): processing
vendor id payload May 11 21:16:52.166: ISAKMP (0:3): vendor ID seems Unity/DPD but major 123
mismatch May 11 21:16:52.166: ISAKMP (0:3): vendor ID is NAT-T v2 May 11 21:16:52.166: ISAKMP
(0:3): processing vendor id payload May 11 21:16:52.166: ISAKMP (0:3): vendor ID seems Unity/DPD
but major 194 mismatch May 11 21:16:52.166: ISAKMP (0:3): processing vendor id payload May 11
21:16:52.166: ISAKMP (0:3): vendor ID is Unity May 11 21:16:52.166: ISAKMP (0:3) Authentication
by xauth preshared May 11 21:16:52.166: ISAKMP (0:3): Checking ISAKMP transform 1 against
priority 20 policy
```

```
!--- ISAKMP policy that matches against configured policy. May 11 21:16:52.166: ISAKMP:
encryption AES-CBC May 11 21:16:52.170: ISAKMP: hash SHA May 11 21:16:52.170: ISAKMP: default
group 2 May 11 21:16:52.170: ISAKMP: auth XAUTHInitPreShared May 11 21:16:52.170: ISAKMP: life
type in seconds May 11 21:16:52.170: ISAKMP: life duration (VPI) of 0x0 0x20 0xC4 0x9B May 11
21:16:52.170: ISAKMP: keylength of 256 May 11 21:16:52.170: ISAKMP (0:3): Encryption algorithm
offered does not match policy! May 11 21:16:52.170: ISAKMP (0:3): atts are not acceptable. Next
payload is 3 .... May 11 21:16:52.198: ISAKMP (0:3): Checking ISAKMP transform 10 against
priority 20 policy May 11 21:16:52.198: ISAKMP: encryption 3DES-CBC May 11 21:16:52.202: ISAKMP:
hash MD5 May 11 21:16:52.202: ISAKMP: default group 2 May 11 21:16:52.202: ISAKMP: auth
XAUTHInitPreShared May 11 21:16:52.202: ISAKMP: life type in seconds May 11 21:16:52.202:
ISAKMP: life duration (VPI) of 0x0 0x20 0xC4 0x9B May 11 21:16:52.202: ISAKMP (0:3): atts are
```

acceptable. Next payload is 3 May 11 21:16:52.418: ISAKMP (0:3): processing KE payload. message ID = 0 May 11 21:16:52.686: ISAKMP (0:3): processing NONCE payload. message ID = 0 May 11 21:16:52.690: ISAKMP (0:3): vendor ID is NAT-T v2 May 11 21:16:52.690: ISAKMP (0:3): Input = IKE_MSG_FROM_PEER, IKE_AM_EXCH May 11 21:16:52.690: ISAKMP (0:3): Old State = IKE_READY New State = IKE_R_AM_AAA_AWAIT May 11 21:16:52.694: ISAKMP: got callback 1 May 11 21:16:52.698: ISAKMP (0:3): SKEYID state generated May 11 21:16:52.698: ISAKMP (0:3): constructed NAT-T vendor-02 ID May 11 21:16:52.702: ISAKMP (0:3): SA is doing pre-shared key authentication plus XAUTH using id type ID_IPV4_ADDR May 11 21:16:52.702: ISAKMP (0:3): ID payload next-payload : 10 type : 1 address : 172.18.124.195 protocol : 17 port : 0 length : 12 May 11 21:16:52.702: ISAKMP (3): Total payload length: 12 May 11 21:16:52.702: ISAKMP (0:3): sending packet to 172.18.173.80 my_port 500 peer_port 500 (R) AG_INIT_EXCH May 11 21:16:52.706: ISAKMP (0:3): Input = IKE_MSG_FROM_AAA, PRESHARED_KEY_REPLY May 11 21:16:52.706: ISAKMP (0:3): Old State = IKE_R_AM_AAA_AWAIT New State = IKE_R_AM2 May 11 21:16:52.746: ISAKMP (0:3): received packet from 172.18.173.80 dport 500 sport 500 Global (R) AG_INIT_EXCH May 11 21:16:52.750: ISAKMP (0:3): processing HASH payload. message ID = 0 May 11 21:16:52.750: ISAKMP (0:3): processing NOTIFY INITIAL_CONTACT protocol 1 spi 0, message ID = 0, sa = 8179D054 May 11 21:16:52.750: ISAKMP (0:3): **SA authentication status: authenticated**

!--- Phase 1 SAs are authenticated. May 11 21:16:52.750: ISAKMP (0:3): Process initial contact, bring down existing phase 1 and 2 SA's with local 172.18.124.195 remote 172.18.173.80 remote port 500 May 11 21:16:52.750: ISAKMP (0:3): returning IP addr to the address pool May 11 21:16:52.754: ISAKMP:received payload type 20 May 11 21:16:52.754: ISAKMP:received payload type 20 May 11 21:16:52.754: ISAKMP (0:3): SA authentication status: authenticated May 11 21:16:52.754: ISAKMP (0:3): SA has been authenticated with 172.18.173.80 May 11 21:16:52.754: ISAKMP: Trying to insert a peer 172.18.124.195/172.18.173.80/500/, and inserted successfully. May 11 21:16:52.758: IPSEC(key_engine): got a queue event... May 11 21:16:52.758: ISAKMP: set new node -1991824466 to **CONF_XAUTH**

!--- User Authentication phase starts. May 11 21:16:52.758: ISAKMP (0:3): sending packet to 172.18.173.80 my_port 500 peer_port 500 (R) QM_IDLE May 11 21:16:52.762: ISAKMP (0:3): purging node -1991824466 May 11 21:16:52.762: ISAKMP: Sending phase 1 responder lifetime 86400 May 11 21:16:52.762: ISAKMP (0:3): Input = IKE_MSG_FROM_PEER, IKE_AM_EXCH May 11 21:16:52.762: ISAKMP (0:3): Old State = IKE_R_AM2 New State = IKE_P1_COMPLETE May 11 21:16:52.762: ISAKMP (0:3): Need XAUTH May 11 21:16:52.762: ISAKMP (0:3): FSM action returned error: 4 May 11 21:16:52.766: ISAKMP (0:3): Input = IKE_MSG_INTERNAL, IKE_PHASE1_COMPLETE May 11 21:16:52.766: ISAKMP (0:3): Old State = IKE_P1_COMPLETE New State = IKE_XAUTH_AAA_START_LOGIN_AWAIT May 11 21:16:52.766: ISAKMP: got callback 1 May 11 21:16:52.766: ISAKMP: set new node -1773462433 to CONF_XAUTH May 11 21:16:52.766: ISAKMP/xauth: **request attribute XAUTH_USER_NAME_V2**

!--- Requests user name. May 11 21:16:52.770: ISAKMP/xauth: **request attribute XAUTH_USER_PASSWORD_V2**

!--- Requests user password. May 11 21:16:52.770: ISAKMP (0:3): initiating peer config to 172.18.173.80. ID = -1773462433 May 11 21:16:52.770: ISAKMP (0:3): sending packet to 172.18.173.80 my_port 500 peer_port 500 (R) CONF_XAUTH May 11 21:16:52.770: ISAKMP (0:3): Input = IKE_MSG_FROM_AAA, IKE_AAA_START_LOGIN ... May 11 21:17:00.350: ISAKMP (0:3): Input = IKE_MSG_FROM_PEER, IKE_CFG_REQUEST May 11 21:17:00.350: ISAKMP (0:3): Old State = IKE_P1_COMPLETE New State = IKE_CONFIG_AUTHOR_AAA_AWAIT May 11 21:17:00.434: ISAKMP: got callback 1 May 11 21:17:00.438: ISAKMP (0:3): attributes sent in message: May 11 21:17:00.438: Address: 0.2.0.0 May 11 21:17:00.438: ISAKMP (0:3): **allocating address 10.50.50.2**

!--- Allocates the IP address for software VPN Client from the client IP pool. May 11 21:17:00.438: ISAKMP: Sending private address: 10.50.50.2 May 11 21:17:00.442: ISAKMP: Sending ADDRESS_EXPIRY seconds left to use the address: 86391 May 11 21:17:00.442: ISAKMP: Sending APPLICATION_VERSION string: Cisco Internetwork Operating System Software IOS (tm) C1700 Software (C1700-K9O3SY7-M), Version 12.3(9a), RELEASE SOFTWARE (fc4) Copyright (c) 1986-2004 by cisco Systems, Inc. Compiled Fri 23-Jul-04 02:20 by kellythw May 11 21:17:00.442: ISAKMP (0/3): Unknown Attr: UNKNOWN (0x7008) May 11 21:17:00.446: ISAKMP (0/3): Unknown Attr: UNKNOWN (0x700A) May 11 21:17:00.446: ISAKMP (0/3): Unknown Attr: UNKNOWN (0x7005) May 11 21:17:00.446: ISAKMP (0:3): responding to peer config from 172.18.173.80. ID = 1330918554 May 11 21:17:00.450: ISAKMP (0:3): sending packet to 172.18.173.80 my_port 500 peer_port 500 (R) CONF_ADDR May 11 21:17:00.450: ISAKMP (0:3): deleting node 1330918554 error FALSE reason "" May 11 21:17:00.450: ISAKMP (0:3): Input = IKE_MSG_FROM_AAA, IKE_AAA_GROUP_ATTR May 11 21:17:00.450: ISAKMP (0:3): Old State = IKE_CONFIG_AUTHOR_AAA_AWAIT New State = IKE_P1_COMPLETE May 11 21:17:00.454: ISAKMP (0:3): Input = IKE_MSG_INTERNAL, IKE_PHASE1_COMPLETE May 11 21:17:00.454: ISAKMP (0:3): Old State = IKE_P1_COMPLETE New State = IKE_P1_COMPLETE ... May 11 21:17:01.474: ISAKMP (0:3):

Creating IPsec SAs

!--- Creation of IPsec Security Associations. May 11 21:17:01.474: inbound SA from 172.18.173.80 to 172.18.124.195 (f/i) 0/ 0 (proxy 10.50.50.2 to 0.0.0.0) May 11 21:17:01.474: has spi

0x1B139B2F and conn_id 2000 and flags 2 May 11 21:17:01.474: lifetime of 2147483 seconds May 11 21:17:01.474: has client flags 0x0 May 11 21:17:01.474: outbound SA from 172.18.124.195 to 172.18.173.80 (f/i) 0/ 0 (proxy 0.0.0.0 to 10.50.50.2) May 11 21:17:01.474: has spi -895677582 and conn_id 2001 and flags A May 11 21:17:01.474: lifetime of 2147483 seconds May 11 21:17:01.474: has client flags 0x0 May 11 21:17:01.478: ISAKMP (0:3): sending packet to 172.18.173.80 my_port 500 peer_port 500 (R) QM_IDLE May 11 21:17:01.478: ISAKMP (0:3): Node 896912581, Input = IKE_MESG_FROM_IPSEC, IKE_SPI_REPLY May 11 21:17:01.478: ISAKMP (0:3): Old State = IKE_QM_SPI_STARVE New State = IKE_QM_R_QM2 May 11 21:17:01.482: IPSEC(key_engine): got a queue event... May 11 21:17:01.482: IPSEC(initialize_sas): , (key eng. msg.) INBOUND local= 172.18.124.195, remote= 172.18.173.80, local_proxy= 0.0.0.0/0.0.0.0/0/0 (type=4), remote_proxy= 10.50.50.2/0.0.0.0/0/0 (type=1), protocol= ESP, transform= esp-3des esp-sha-hmac (Tunnel), lifedur= 2147483s and 0kb, spi= 0x1B139B2F(454269743), conn_id= 2000, keysize= 0, flags= 0x2 May 11 21:17:01.482: IPSEC(initialize_sas): , (key eng. msg.) OUTBOUND local= 172.18.124.195, remote= 172.18.173.80, local_proxy= 0.0.0.0/0.0.0.0/0/0 (type=4), remote_proxy= 10.50.50.2/0.0.0.0/0/0 (type=1), protocol= ESP, transform= esp-3des esp-sha-hmac (Tunnel), lifedur= 2147483s and 0kb, spi= 0xCA9D0B72(3399289714), conn_id= 2001, keysize= 0, flags= 0xA May 11 21:17:01.486: IPSEC(kei_proxy): head = rtp, map->ivrf = , kei->ivrf = May 11 21:17:01.486: IPSEC(kei_proxy): head = rtp, map->ivrf = , kei->ivrf = May 11 21:17:01.486: IPSEC(add mtree): src 172.18.124.195, dest 10.50.50.2, dest_port 0 **May 11 21:17:01.486: IPSEC(create_sa): sa created,**
(sa) sa_dest= 172.18.124.195, sa_prot= 50,
sa_spi= 0x1B139B2F(454269743),
sa_trans= esp-3des esp-sha-hmac , sa_conn_id= 2000
May 11 21:17:01.490: IPSEC(create_sa): sa created,
(sa) sa_dest= 172.18.173.80, sa_prot= 50,
sa_spi= 0xCA9D0B72(3399289714),
sa_trans= esp-3des esp-sha-hmac , sa_conn_id= 2001

!--- Security Association connection IDs created. May 11 21:17:01.742: ISAKMP (0:3): received packet from 172.18.173.80 dport 500 sport 500 Global (R) QM_IDLE

!--- Successful tunnel established. May 11 21:17:01.746: ISAKMP (0:3): deleting node 896912581 error FALSE reason "quick mode done (await)" May 11 21:17:01.746: ISAKMP (0:3): Node 896912581, Input = IKE_MESG_FROM_PEER, IKE_QM_EXCH May 11 21:17:01.746: ISAKMP (0:3): Old State = IKE_QM_R_QM2 New State = **IKE_QM_PHASE2_COMPLETE**

May 11 21:17:01.746: IPSEC(key_engine): got a queue event...

May 11 21:17:01.746: IPSEC(key_engine_enable_outbound): rec'd enable notify from ISAKMP

May 11 21:17:01.746: IPSEC(key_engine_enable_outbound): enable SA with spi 3399289714/50 for 172.18.173.80

[Depuraciones en PIX 501 \(conexión de LAN a LAN\)](#)

PIX-501#

ISAKMP (0): beginning Main Mode exchange

crypto_isakmp_process_block:src:172.18.124.195, dest:172.18.124.196
spt:500 dpt:500

OAK_MM exchange

ISAKMP (0): processing SA payload. message ID = 0

ISAKMP (0): **Checking ISAKMP transform 1 against priority 10 policy**

!--- ISAKMP attributes check in process. ISAKMP: encryption 3DES-CBC ISAKMP: hash MD5 ISAKMP: default group 2 ISAKMP: auth pre-share ISAKMP: life type in seconds ISAKMP: life duration (VPI) of 0x0 0x1 0x51 0x80 ISAKMP (0): **atts are acceptable.** Next payload is 0

ISAKMP (0): SA is doing pre-shared key authentication using id type ID_IPV4_ADDR
return status is IKMP_NO_ERROR

crypto_isakmp_process_block:src:172.18.124.195, dest:172.18.124.196
spt:500 dpt:500

OAK_MM exchange

ISAKMP (0): processing KE payload. message ID = 0

ISAKMP (0): processing NONCE payload. message ID = 0

ISAKMP (0): processing vendor id payload


```
ISAKMP (0): processing vendor id payload
ISAKMP (0): remote peer supports dead peer detection
ISAKMP (0): processing vendor id payload
ISAKMP (0): speaking to another IOS box!
ISAKMP (0): processing vendor id payload
ISAKMP (0): received xauth v6 vendor id

ISAKMP (0): ID payload
next-payload : 8
type : 1
protocol : 17
port : 500
length : 8
ISAKMP (0): Total payload length: 12
return status is IKMP_NO_ERROR
crypto_isakmp_process_block:src:172.18.124.195, dest:172.18.124.196
spt:500 dpt:500
OAK_MM exchange
ISAKMP (0): processing ID payload. message ID = 0
ISAKMP (0): processing HASH payload. message ID = 0
ISAKMP (0): SA has been authenticated

ISAKMP (0): beginning Quick Mode exchange, M-ID of 156512779:954320bIPSEC
(key_engine): got a queue event...
IPSEC(spi_response): getting spi 0x79efefce(2045767630) for SA
from 172.18.124.195 to 172.18.124.196 for prot 3

return status is IKMP_NO_ERROR
ISAKMP (0): sending INITIAL_CONTACT notify
ISAKMP (0): sending NOTIFY message 24578 protocol 1
VPN Peer: ISAKMP: Added new peer: ip:172.18.124.195/500 Total VPN Peers:1
VPN Peer: ISAKMP: Peer ip:172.18.124.195/500 Ref cnt incremented to:1 Total
VPN Peers:1
crypto_isakmp_process_block:src:172.18.124.195, dest:172.18.124.196
spt:500 dpt:500
OAK_QM exchange
oakley_process_quick_mode:
OAK_QM_IDLE
ISAKMP (0): processing SA payload. message ID = 156512779

ISAKMP : Checking IPsec proposal 1

ISAKMP: transform 1, ESP_3DES
ISAKMP: attributes in transform:
ISAKMP: encaps is 1
ISAKMP: SA life type in seconds
ISAKMP: SA life duration (basic) of 28800
ISAKMP: SA life type in kilobytes
ISAKMP: SA life duration (VPI) of 0x0 0x46 0x50 0x0
ISAKMP: authenticator is HMAC-SHA
ISAKMP (0): atts are acceptable.
!--- Phase 1 attributes are negotiated. IPSEC(validate_proposal_request): proposal part #1, (key
eng. msg.) dest= 172.18.124.195, src= 172.18.124.196, dest_proxy= 192.168.40.0/255.255.255.0/0/0
(type=4), src_proxy= 192.168.10.0/255.255.255.0/0/0 (type=4), protocol= ESP, transform= esp-3des
esp-sha-hmac , lifedur= 0s and 0kb, spi= 0x0(0), conn_id= 0, keysize= 0, flags= 0x4 ISAKMP (0):
processing NONCE payload. message ID = 156512779 ISAKMP (0): processing ID payload. message ID =
156512779 ISAKMP (0): processing ID payload. message ID = 156512779 ISAKMP (0): processing
NOTIFY payload 24576 protocol 3 spi 4227499308, message ID = 156512779 ISAKMP (0): processing
```

```
responder lifetime ISAKMP (0): responder lifetime of 3600s ISAKMP (0): Creating IPsec SAs
inbound SA from 172.18.124.195 to 172.18.124.196 (proxy 192.168.40.0 to 192.168.10.0) has spi
2045767630 and conn_id 1 and flags 4 lifetime of 3600 seconds lifetime of 4608000 kilobytes
outbound SA from 172.18.124.196 to 172.18.124.195 (proxy 192.168.10.0 to 192.168.40.0) has spi
4227499308 and conn_id 2 and flags 4 lifetime of 3600 seconds lifetime of 4608000
kilobytesIPSEC(key_engine): got a queue event... IPSEC(initialize_sas): , (key eng. msg.) dest=
172.18.124.196, src= 172.18.124.195, dest_proxy= 192.168.10.0/255.255.255.0/0/0 (type=4),
src_proxy= 192.168.40.0/255.255.255.0/0/0 (type=4), protocol= ESP, transform= esp-3des esp-sha-
hmac , lifedur= 3600s and 4608000kb, spi= 0x79efefce(2045767630), conn_id= 1, keysize= 0, flags=
0x4
IPSEC(initialize_sas): ,
(key eng. msg.) src= 172.18.124.196, dest= 172.18.124.195,
src_proxy= 192.168.10.0/255.255.255.0/0/0 (type=4),
dest_proxy= 192.168.40.0/255.255.255.0/0/0 (type=4),
protocol= ESP, transform= esp-3des esp-sha-hmac ,
lifedur= 3600s and 4608000kb,
spi= 0xfbfa852c(4227499308), conn_id= 2, keysize= 0, flags= 0x4
!--- Phase 2 tunnel establishment.
```

Depuraciones en PIX-506-B (conexión de cliente EzVPN)

```
ISAKMP (0): ID payload
next-payload : 13
type : 11
protocol : 17
port : 0
length : 8
ISAKMP (0): Total payload length: 12
ISAKMP (0:0): sending NAT-T vendor ID - rev 2 & 3
ISAKMP (0): beginning Aggressive Mode exchange
crypto_isakmp_process_block:src:172.18.124.195, dest:172.18.124.197
spt:500 dpt:500
OAK_AG exchange
ISAKMP (0): processing SA payload. message ID = 0

ISAKMP (0): Checking ISAKMP transform 1 against priority 65001 policy
ISAKMP: encryption 3DES-CBC
ISAKMP: hash MD5
ISAKMP: default group 2
ISAKMP: extended auth pre-share (init)
ISAKMP: life type in seconds
ISAKMP: life duration (VPI) of 0x0 0x1 0x51 0x80
ISAKMP (0): atts are not acceptable. Next payload is 0
...
ISAKMP (0): Checking ISAKMP transform 1 against priority 65008 policy
ISAKMP: encryption 3DES-CBC
ISAKMP: hash MD5
ISAKMP: default group 2
ISAKMP: extended auth pre-share (init)
ISAKMP: life type in seconds
ISAKMP: life duration (VPI) of 0x0 0x1 0x51 0x80
ISAKMP (0): atts are acceptable. Next payload is 0
!--- Phase 1 attributes are accepted. ISAKMP (0): processing vendor id payload ISAKMP (0):
processing vendor id payload ISAKMP (0): remote peer supports dead peer detection ISAKMP (0):
processing vendor id payload ISAKMP (0): speaking to another IOS box! ISAKMP (0): processing
vendor id payload ISAKMP (0): received xauth v6 vendor id ISAKMP (0): processing vendor id
payload ISAKMP (0:0): vendor ID is NAT-T ISAKMP (0): processing KE payload. message ID = 0
ISAKMP (0): processing ID payload. message ID = 0 ISAKMP (0): processing NONCE payload. message
ID = 0 ISAKMP (0): processing HASH payload. message ID = 0 ISAKMP (0:0): Detected NAT-D payload
ISAKMP (0:0): recalc my hash for NAT-D ISAKMP (0:0): NAT match MINE hash ISAKMP (0:0): Detected
NAT-D payload ISAKMP (0:0): recalc his hash for NAT-D ISAKMP (0:0): NAT match HIS hash ISAKMP
(0): SA has been authenticated
!--- SAs have been authenticated. crypto_isakmp_process_block:src:172.18.124.195,
```

dest:172.18.124.197 spt:500 dpt:500 ISAKMP (0): processing NOTIFY payload 24576 protocol 1 spi 0, message ID = 1554218001 ISAKMP (0): processing responder lifetime ISAKMP (0): phase 1 responder lifetime of 86400s ISAKMP (0): not overriding 86400s return status is IKMP_NO_ERR_NO_TRANS crypto_isakmp_process_block:src:172.18.124.195, dest:172.18.124.197 spt:500 dpt:500 ISAKMP_TRANSACTION exchange ISAKMP (0:0): processing transaction payload from 172.18.124.195. message ID = 15250780 ISAKMP: Config payload CFG_REQUEST ISAKMP (0:0): **checking request:**

!--- Extended authentication process check. ISAKMP: attribute XAUTH_USER_NAME (16521)
ISAKMP: attribute XAUTH_USER_PASSWORD (16522)

ISAKMP (0:0): responding to peer config from 172.18.124.195. ID = 3060977862
return status is IKMP_NO_ERROR
crypto_isakmp_process_block:src:172.18.124.195, dest:172.18.124.197
spt:500 dpt:500

ISAKMP_TRANSACTION exchange
ISAKMP (0:0): processing transaction payload from 172.18.124.195.
message ID = 15250780

ISAKMP: Config payload CFG_SET
ISAKMP (0:0): checking SET:
ISAKMP: XAUTH_STATUS XAUTH-OK

!--- Extended authentication checked. ISAKMP (0:0): attributes sent in message: Status: 1 return status is IKMP_NO_ERROR ISAKMP : attributes being requested INTERNAL_IPV_ADDRESS ALT_DEF_DOMAIN INTERNAL_IPV_NBNS INTERNAL_IPV_DNS ALT_SPLIT_INCLUDE ALT_SPLITDNS_NAME ALT_PFS ALT_CFG_SEC_UNIT ALT_CFG_USER_AUTH ALT_CFG_IDLE_TIME ALT_CFG_IP_TEL ALT_CFG_AUTH_SRVNAME ALT_CFG_AUTH_SRVPORT ALT_CFG_AUTH_SRVSEC ALT_BACKUP_SERVERS ... ISAKMP : Checking IPsec proposal 1 ISAKMP: transform 1, ESP_3DES ISAKMP: attributes in transform: ISAKMP: encaps is 1 ISAKMP: SA life type in seconds ISAKMP: SA life duration (basic) of 28800 ISAKMP: SA life type in kilobytes ISAKMP: SA life duration (VPI) of 0x0 0x46 0x50 0x0 ISAKMP: authenticator is HMAC-MD5 ISAKMP (0): **atts are acceptable.**

!--- IPsec proposal accepted. IPSEC(validate_proposal_request): proposal part #1, (key eng. msg.) dest= 172.18.124.195, src= 172.18.124.197, dest_proxy= 0.0.0.0/0.0.0.0/0/0 (type=4), src_proxy= 172.25.70.6/255.255.255.255/0/0 (type=1), protocol= ESP, transform= esp-3des esp-md5-hmac , lifedur= 0s and 0kb, spi= 0x0(0), conn_id= 0, keysize= 0, flags= 0x4 ISAKMP (0): processing NONCE payload. message ID = 4111011634 ISAKMP (0): processing ID payload. message ID = 4111011634 ISAKMP (0): processing ID payload. message ID = 4111011634 ISAKMP (0): processing NOTIFY payload 24576 protocol 3 spi 2254721697, message ID = 4111011634 ISAKMP (0): processing responder lifetime ISAKMP (0): responder lifetime of 3600s ISAKMP (0): Creating IPsec SAs inbound SA from 172.18.124.195 to 172.18.124.197 (proxy 0.0.0.0 to 172.25.70.6) has spi 3398064436 and conn_id 2 and flags 4 lifetime of 3600 seconds lifetime of 4608000 kilobytes outbound SA from 172.18.124.197 to 172.18.124.195 (proxy 172.25.70.6 to 0.0.0.0) has spi 2254721697 and conn_id 1 and flags 4 lifetime of 3600 seconds lifetime of 4608000 kilobytes IPSEC(key_engine): got a queue event... IPSEC(initialize_sas): , (key eng. msg.) dest= 172.18.124.197, src= 172.18.124.195, **dest_proxy= 172.25.70.6/255.255.255.255/0/0 (type=1), src_proxy= 0.0.0.0/0.0.0.0/0/0 (type=4),** protocol= ESP, transform= esp-3des esp-md5-hmac , lifedur= 3600s and 4608000kb, spi= 0xca8a5934(3398064436), conn_id= 2, keysize= 0, flags= 0x4 IPSEC(initialize_sas): , (key eng. msg.) src= 172.18.124.197, dest= 172.18.124.195, **src_proxy= 172.25.70.6/255.255.255.255/0/0 (type=1), dest_proxy= 0.0.0.0/0.0.0.0/0/0 (type=4),**

!--- IPsec SAs created. protocol= ESP, transform= esp-3des esp-md5-hmac , lifedur= 3600s and 4608000kb, spi= 0x866452a1(2254721697), conn_id= 1, keysize= 0, flags= 0x4

[Depuraciones en VPN Client](#)

Seleccione Inicio > Programas > Cisco VPN Client > Log Viewer.

Cisco Systems VPN Client Version 4.0 (Rel)
Copyright (C) 1998-2003 Cisco Systems, Inc. All Rights Reserved.
Client Type(s): Windows, WinNT
Running on: 5.1.2600

1 15:47:01.430 08/19/04 Sev=Info/6 IKE/0x6300003B
Attempting to establish a connection with 172.18.124.195.

2 15:47:01.460 08/19/04 Sev=Info/4 IKE/0x63000013
SENDING >>> ISAKMP OAK AG (SA, KE, NON, ID, VID(Xauth), VID(dpd),
VID(Nat-T), VID(Frag), VID(Unity)) to 172.18.124.195

3 15:47:01.947 08/19/04 Sev=Info/5 IKE/0x6300002F
Received ISAKMP packet: peer = 172.18.124.195

4 15:47:01.947 08/19/04 Sev=Info/4 IKE/0x63000014
RECEIVING <<< ISAKMP OAK AG (SA, VID(Unity), VID(dpd), VID(?), VID(Xauth),
VID(Nat-T), KE, ID, NON, HASH, NAT-D, NAT-D) from 172.18.124.195

5 15:47:01.947 08/19/04 Sev=Info/5 IKE/0x63000001
Peer is a Cisco-Unity compliant peer

6 15:47:01.947 08/19/04 Sev=Info/5 IKE/0x63000001
Peer supports DPD

7 15:47:01.947 08/19/04 Sev=Info/5 IKE/0x63000001
Peer supports DWR Code and DWR Text

8 15:47:01.947 08/19/04 Sev=Info/5 IKE/0x63000001
Peer supports XAUTH

9 15:47:01.947 08/19/04 Sev=Info/5 IKE/0x63000001
Peer supports NAT-T

10 15:47:01.977 08/19/04 Sev=Info/6 IKE/0x63000001
IOS Vendor ID Contruction successful

11 15:47:01.977 08/19/04 Sev=Info/4 IKE/0x63000013
SENDING >>> ISAKMP OAK AG *(HASH, NOTIFY:STATUS_INITIAL_CONTACT,
NAT-D, NAT-D, VID(?), VID(Unity)) to 172.18.124.195

12 15:47:01.977 08/19/04 Sev=Info/4 IKE/0x63000082
IKE Port in use - Local Port = 0x01F4, Remote Port = 0x01F4

13 15:47:01.977 08/19/04 Sev=Info/5 IKE/0x63000071
Automatic NAT Detection Status:
Remote end is NOT behind a NAT device
This end is NOT behind a NAT device
!--- NAT device detection process. 14 15:47:01.986 08/19/04 Sev=Info/5 IKE/0x6300002F Received
ISAKMP packet: peer = 172.18.124.195 15 15:47:01.986 08/19/04 Sev=Info/4 IKE/0x63000014
RECEIVING <<< ISAKMP OAK INFO *(HASH, NOTIFY:STATUS_RESP_LIFETIME) from 172.18.124.195 16
15:47:01.986 08/19/04 Sev=Info/5 IKE/0x63000044 RESPONDER-LIFETIME notify has value of 86400
seconds 17 15:47:01.986 08/19/04 Sev=Info/5 IKE/0x63000046 This SA has already been alive for 0
seconds, setting expiry to 86400 seconds from now 18 15:47:01.996 08/19/04 Sev=Info/5
IKE/0x6300002F Received ISAKMP packet: peer = 172.18.124.195 19 15:47:01.996 08/19/04 Sev=Info/4
IKE/0x63000014 RECEIVING <<< ISAKMP OAK TRANS *(HASH, ATTR) from 172.18.124.195 20 15:47:02.689
08/19/04 Sev=Info/4 IPSEC/0x63700008 IPsec driver successfully started 21 15:47:02.689 08/19/04
Sev=Info/4 IPSEC/0x63700014 Deleted all keys 22 15:47:02.689 08/19/04 Sev=Info/6
IPSEC/0x6370002B Sent 85 packets, 0 were fragmented. 23 15:47:06.044 08/19/04 Sev=Info/4
IKE/0x63000013 SENDING >>> ISAKMP OAK TRANS *(HASH, ATTR) to 172.18.124.195 24 15:47:06.064
08/19/04 Sev=Info/5 IKE/0x6300002F Received ISAKMP packet: peer = 172.18.124.195 25 15:47:06.064
08/19/04 Sev=Info/4 IKE/0x63000014 RECEIVING <<< ISAKMP OAK TRANS *(HASH, ATTR) from
172.18.124.195 26 15:47:06.064 08/19/04 Sev=Info/4 IKE/0x63000013 SENDING >>> ISAKMP OAK TRANS
*(HASH, ATTR) to 172.18.124.195 27 15:47:06.103 08/19/04 Sev=Info/5 IKE/0x6300005D Client
sending a firewall request to concentrator 28 15:47:06.103 08/19/04 Sev=Info/5 IKE/0x6300005C
Firewall Policy: Product=Cisco Systems Integrated Client, Capability=(Centralized Protection
Policy). 29 15:47:06.113 08/19/04 Sev=Info/4 IKE/0x63000013 SENDING >>> ISAKMP OAK TRANS *(HASH,
ATTR) to 172.18.124.195 30 15:47:06.132 08/19/04 Sev=Info/5 IKE/0x6300002F Received ISAKMP
packet: peer = 172.18.124.195 31 15:47:06.132 08/19/04 Sev=Info/4 IKE/0x63000014 RECEIVING <<<

```
ISAKMP OAK TRANS *(HASH, ATTR) from 172.18.124.195 32 15:47:06.132 08/19/04 Sev=Info/5
IKE/0x63000010 MODE_CFG_REPLY: Attribute = INTERNAL_IPV4_ADDRESS: , value = 10.50.50.2
!--- Assigned IP address for the VPN Client. 33 15:47:06.132 08/19/04 Sev=Info/5 IKE/0xA3000017
MODE_CFG_REPLY: The received (INTERNAL_ADDRESS_EXPIRY) attribute and value (842150403) is not
supported 34 15:47:06.132 08/19/04 Sev=Info/5 IKE/0x6300000E MODE_CFG_REPLY: Attribute =
MODECFG_UNITY_DEFDOMAIN: , value = cisco.com 35 15:47:06.132 08/19/04 Sev=Info/5 IKE/0x6300000E
MODE_CFG_REPLY: Attribute = APPLICATION_VERSION, value = Cisco Internetwork Operating System
Software IOS (tm) C1700 Software (C1700-K9O3SY7-M), Version 12.3(9a), RELEASE SOFTWARE (fc4)
Copyright (c) 1986-2004 by cisco Systems, Inc. Compiled Fri 23-Jul-04 02:20 by kellythw 37
15:47:06.171 08/19/04 Sev=Info/4 IKE/0x63000013 SENDING >>> ISAKMP OAK QM *(HASH, SA, NON, ID,
ID) to 172.18.124.195 38 15:47:06.444 08/19/04 Sev=Info/5 IKE/0x6300002F Received ISAKMP packet:
peer = 172.18.124.195 39 15:47:06.454 08/19/04 Sev=Info/4 IKE/0x63000014 RECEIVING <<< ISAKMP
OAK QM *(HASH, SA, NON, ID, ID, NOTIFY:STATUS_RESP_LIFETIME from 172.18.124.195 40 15:47:06.454
08/19/04 Sev=Info/5 IKE/0x63000044 RESPONDER-LIFETIME notify has value of 3600 seconds 41
15:47:06.454 08/19/04 Sev=Info/5 IKE/0x63000045 RESPONDER-LIFETIME notify has value of 4608000
kb 42 15:47:06.454 08/19/04 Sev=Info/4 IKE/0x63000013 SENDING >>> ISAKMP OAK QM *(HASH) to
172.18.124.195 43 15:47:06.454 08/19/04 Sev=Info/5 IKE/0x63000058 Loading IPsec SA
(MsgID=83D109EC OUTBOUND SPI = 0x422186D5 INBOUND SPI = 0x5D94CB41) 44 15:47:06.454 08/19/04
Sev=Info/5 IKE/0x63000025 Loaded OUTBOUND ESP SPI: 0x422186D5

45 15:47:06.454 08/19/04 Sev=Info/5 IKE/0x63000026
Loaded INBOUND ESP SPI: 0x5D94CB41

46 15:47:09.307 08/19/04 Sev=Info/4 IPSEC/0x63700014
Deleted all keys

47 15:47:09.307 08/19/04 Sev=Info/4 IPSEC/0x63700010
Created a new key structure

48 15:47:09.307 08/19/04 Sev=Info/4 IPSEC/0x6370000F
Added key with SPI=0xd5862142 into key list

49 15:47:09.307 08/19/04 Sev=Info/4 IPSEC/0x63700010
Created a new key structure

50 15:47:09.307 08/19/04 Sev=Info/4 IPSEC/0x6370000F
Added key with SPI=0x41cb945d into key list

51 15:47:09.307 08/19/04 Sev=Info/4 IPSEC/0x6370002E
Assigned VA private interface addr 10.50.50.2

52 15:47:16.568 08/19/04 Sev=Info/6 IKE/0x6300003D
Sending DPD request to 172.18.124.195, seq# = 2346900535

53 15:47:16.568 08/19/04 Sev=Info/4 IKE/0x63000013
SENDING >>> ISAKMP OAK INFO *(HASH, NOTIFY:DPD_REQUEST) to 172.18.124.195

54 15:47:16.578 08/19/04 Sev=Info/5 IKE/0x6300002F
Received ISAKMP packet: peer = 172.18.124.195

55 15:47:16.578 08/19/04 Sev=Info/4 IKE/0x63000014
RECEIVING <<< ISAKMP OAK INFO *(HASH, NOTIFY:DPD_ACK) from 172.18.124.195

56 15:47:16.578 08/19/04 Sev=Info/5 IKE/0x6300003F
Received DPD ACK from 172.18.124.195, seq# received = 2346900536,
seq# expected = 2346900536
```

[Troubleshoot](#)

En esta sección encontrará información que puede utilizar para solucionar problemas de configuración.

[Comandos para resolución de problemas](#)

La herramienta [Output Interpreter](#) (sólo para clientes registrados) permite utilizar algunos comandos “show” y ver un análisis del resultado de estos comandos.

Nota: Consulte [Información Importante sobre Comandos Debug](#) antes de ejecutar los comandos debug.

- **show crypto isakmp sa:** muestra todas las SA de Intercambio de claves de Internet (IKE) actuales en un par.

```
VPN1750#show crypto isakmp sa
dst          src          state          conn-id slot
172.18.124.195 172.18.173.80 QM_IDLE          3      0
!--- VPN Client. 172.18.124.195 172.18.124.197 QM_IDLE 2 0 !--- EzVPN between hub router and
PIX-506-B. 172.18.124.195 172.18.124.196 QM_IDLE 1 0 !--- EzVPN between hub router and PIX-
501.
```

- **show crypto ipsec sa** — Muestra la configuración actual utilizada por las SA actuales

```
VPN1750#show crypto ipsec sa
interface: FastEthernet0
  Crypto map tag: rtp, local addr. 172.18.124.195

protected vrf:
local ident (addr/mask/prot/port): (192.168.40.0/255.255.255.0/0/0)
remote ident (addr/mask/prot/port): (192.168.10.0/255.255.255.0/0/0)
current_peer: 172.18.124.196:500
  PERMIT, flags={origin_is_acl,}
#pkts encaps: 4, #pkts encrypt: 4, #pkts digest 4
#pkts decaps: 4, #pkts decrypt: 4, #pkts verify 4
#pkts compressed: 0, #pkts decompressed: 0
#pkts not compressed: 0, #pkts compr. failed: 0
#pkts not decompressed: 0, #pkts decompress failed: 0
#send errors 0, #recv errors 0

  local crypto endpt.: 172.18.124.195, remote crypto endpt.:
172.18.124.196
  path mtu 1500, ip mtu 1500, ip mtu idb FastEthernet0
  current outbound spi: DB79E16D

inbound esp sas:
  spi: 0xAF634F08(2942521096)
    transform: esp-3des esp-sha-hmac ,
    in use settings = {Tunnel, }
    slot: 0, conn id: 2000, flow_id: 1, crypto map: rtp
    sa timing: remaining key lifetime (k/sec): (4433404/3282)
    IV size: 8 bytes
    replay detection support: Y

inbound ah sas:

inbound pcp sas:

outbound esp sas:
  spi: 0xDB79E16D(3682197869)
    transform: esp-3des esp-sha-hmac ,
    in use settings = {Tunnel, }
    slot: 0, conn id: 2001, flow_id: 2, crypto map: rtp
    sa timing: remaining key lifetime (k/sec): (4433404/3282)
    IV size: 8 bytes
    replay detection support: Y

outbound ah sas:
```

```
outbound pcp sas:

protected vrf:
local ident (addr/mask/prot/port): (172.18.124.195/0.0.0.0/0/0)
remote ident (addr/mask/prot/port): (50.50.50.7/255.255.255.255/0/0)
current_peer: 172.18.173.80:500
  PERMIT, flags={}
#pkts encaps: 6, #pkts encrypt: 6, #pkts digest 6
#pkts decaps: 47, #pkts decrypt: 47, #pkts verify 47
#pkts compressed: 0, #pkts decompressed: 0
#pkts not compressed: 0, #pkts compr. failed: 0
#pkts not decompressed: 0, #pkts decompress failed: 0
#send errors 0, #recv errors 0

local crypto endpt.: 172.18.124.195, remote crypto endpt.:
172.18.173.80
path mtu 1500, ip mtu 1500, ip mtu idb FastEthernet0
current outbound spi: 72149A7D

inbound esp sas:
spi: 0x3467B12A(879210794)
  transform: esp-3des esp-sha-hmac ,
  in use settings ={Tunnel, }
  slot: 0, conn id: 2006, flow_id: 7, crypto map: rtp
  sa timing: remaining key lifetime (k/sec): (4381078/3577)
  IV size: 8 bytes
  replay detection support: Y

inbound ah sas:

inbound pcp sas:

outbound esp sas:
spi: 0x72149A7D(1913952893)
  transform: esp-3des esp-sha-hmac ,
  in use settings ={Tunnel, }
  slot: 0, conn id: 2007, flow_id: 8, crypto map: rtp
  sa timing: remaining key lifetime (k/sec): (4381086/3577)
  IV size: 8 bytes
  replay detection support: Y

outbound ah sas:

outbound pcp sas:

protected vrf:
local ident (addr/mask/prot/port): (172.18.124.195/0.0.0.0/0/0)
remote ident (addr/mask/prot/port): (172.25.70.8/255.255.255.255/0/0)
current_peer: 172.18.124.197:500
  PERMIT, flags={}
#pkts encaps: 3, #pkts encrypt: 3, #pkts digest 3
#pkts decaps: 3, #pkts decrypt: 3, #pkts verify 3
#pkts compressed: 0, #pkts decompressed: 0
#pkts not compressed: 0, #pkts compr. failed: 0
#pkts not decompressed: 0, #pkts decompress failed: 0
#send errors 0, #recv errors 0

local crypto endpt.: 172.18.124.195, remote crypto endpt.:
172.18.124.197
path mtu 1500, ip mtu 1500, ip mtu idb FastEthernet0
current outbound spi: 2DE8E3C9

inbound esp sas:
```

```
spi: 0xED6381E5(3982721509)
  transform: esp-3des esp-md5-hmac ,
  in use settings ={Tunnel, }
  slot: 0, conn id: 2002, flow_id: 3, crypto map: rtp
  sa timing: remaining key lifetime (k/sec): (4561846/3283)
  IV size: 8 bytes
  replay detection support: Y

inbound ah sas:

inbound pcp sas:

outbound esp sas:
  spi: 0x2DE8E3C9(770237385)
  transform: esp-3des esp-md5-hmac ,
  in use settings ={Tunnel, }
  slot: 0, conn id: 2003, flow_id: 4, crypto map: rtp
  sa timing: remaining key lifetime (k/sec): (4561846/3281)
  IV size: 8 bytes
  replay detection support: Y

outbound ah sas:

outbound pcp sas:

protected vrf:
local ident (addr/mask/prot/port): (172.18.124.195/0.0.0.0/0/0)
remote ident (addr/mask/prot/port): (172.18.124.197/255.255.255.255/0/0)
current_peer: 172.18.124.197:500
  PERMIT, flags={}
#pkts encaps: 0, #pkts encrypt: 0, #pkts digest 0
#pkts decaps: 0, #pkts decrypt: 0, #pkts verify 0
#pkts compressed: 0, #pkts decompressed: 0
#pkts not compressed: 0, #pkts compr. failed: 0
#pkts not decompressed: 0, #pkts decompress failed: 0
#send errors 0, #recv errors 0

local crypto endpt.: 172.18.124.195, remote crypto endpt.:
172.18.124.197
path mtu 1500, ip mtu 1500, ip mtu idb FastEthernet0
current outbound spi: 87066AED

inbound esp sas:
  spi: 0x8C8106A4(2357266084)
  transform: esp-3des esp-md5-hmac ,
  in use settings ={Tunnel, }
  slot: 0, conn id: 2004, flow_id: 5, crypto map: rtp
  sa timing: remaining key lifetime (k/sec): (4525643/3285)
  IV size: 8 bytes
  replay detection support: Y

inbound ah sas:

inbound pcp sas:

outbound esp sas:
  spi: 0x87066AED(2265344749)
  transform: esp-3des esp-md5-hmac ,
  in use settings ={Tunnel, }
  slot: 0, conn id: 2005, flow_id: 6, crypto map: rtp
  sa timing: remaining key lifetime (k/sec): (4525643/3285)
  IV size: 8 bytes
  replay detection support: Y
```


outbound ah sas:

outbound pcp sas:

[Información Relacionada](#)

- [Resolución de problemas de PIX para pasar el tráfico de datos en un túnel IPSec establecido](#)
- [Resolución de problemas de seguridad de IP – Información y uso de los comandos de depuración](#)
- [Páginas de soporte de productos de firewalls de la serie PIX 500](#)
- [Páginas de soporte de tecnología IPSec](#)
- [Página de soporte para cliente Cisco VPN](#)
- [Referencias de Comando PIX](#)
- [Solicitudes de Comentarios \(RFC\)](#)
- [Página de soporte de RADIUS](#)
- [Soporte Técnico y Documentación - Cisco Systems](#)