

# Cómo Aplicar Listas de Acceso a Interfaces de Marcado con un Servidor TACACS+

## Contenido

[Introducción](#)

[Prerequisites](#)

[Requirements](#)

[Componentes Utilizados](#)

[Convenciones](#)

[Configurar](#)

[Diagrama de la red](#)

[Configuraciones](#)

[Definición de Listas de Acceso Numeradas en el Router](#)

[Definir listas de acceso en el servidor](#)

[Verificación](#)

[Troubleshoot](#)

[Comandos para resolución de problemas](#)

[Información Relacionada](#)

## [Introducción](#)

Este documento muestra cómo aplicar listas de acceso para marcar interfaces con un servidor TACACS+. Hay dos métodos posibles:

- Defina la lista de acceso numerada en el router y haga referencia a la lista de acceso numerada en el servidor. Esto es compatible con la mayoría de las versiones del software Cisco IOS®.
- Defina la lista de acceso completa en el servidor. Se requiere la versión 11.3 o posterior del software del IOS de Cisco para este método **por usuario**.

**Nota:** Para ISDN, debe utilizar el método **por usuario** y debe tener perfiles virtuales configurados en el router.

## [Prerequisites](#)

## [Requirements](#)

No hay requisitos específicos para este documento.

## [Componentes Utilizados](#)

La información que contiene este documento se basa en las siguientes versiones de software y hardware.

- Versión 11.1 o posterior del software del IOS de Cisco (defina las listas de acceso en el router)
- Versión 11.3 o posterior del software del IOS de Cisco (defina las listas de acceso en el servidor)
- Cisco Secure ACS para UNIX
- Cisco Secure ACS para Windows 2.x y posterior
- TACACS+ Freeware

**Nota:** Este documento supone que el acceso de marcado se configuró previamente. Este documento no explica los detalles de la configuración de Marcar. Consulte [Configuración del NAS para el Acceso de Marcado Básico](#) para obtener información sobre cómo configurar un servidor de acceso a la red (NAS) para Marcar.

The information in this document was created from the devices in a specific lab environment. All of the devices used in this document started with a cleared (default) configuration. If your network is live, make sure that you understand the potential impact of any command.

## Convenciones

Consulte [Convenciones de Consejos Técnicos Cisco para obtener más información sobre las convenciones del documento.](#)

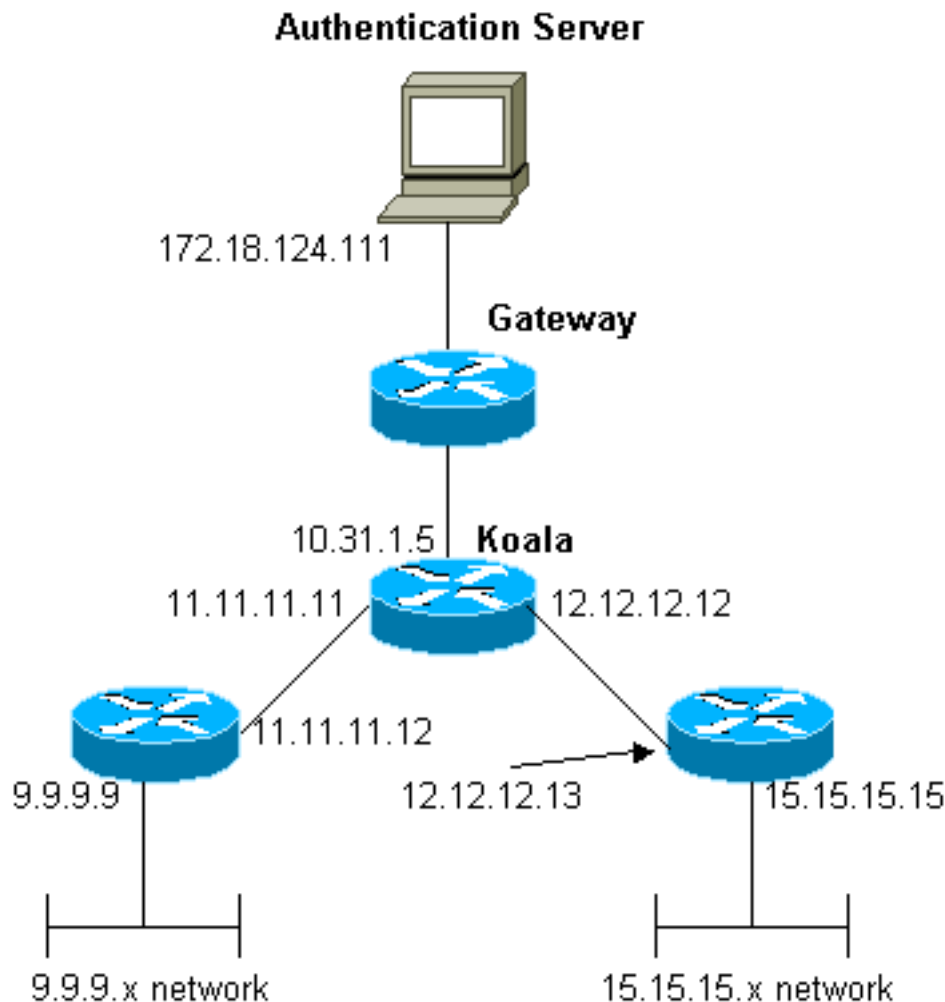
## Configurar

En esta sección encontrará la información para configurar las funciones descritas en este documento.

**Nota:** Use la [Command Lookup Tool](#) (sólo [clientes registrados](#)) para obtener más información sobre los comandos utilizados en este documento.

## Diagrama de la red

En este documento, se utiliza esta configuración de red:



**Nota:** Las configuraciones permiten al usuario que recibe una dirección 1.1.1.x de "mypool" a la red de ping (tráfico ICMP) 9.9.9.x y Telnet (tráfico TCP) a la red 15.15.15.x. No permite al usuario hacer ping a la red 15.15.15.x o Telnet a la red 9.9.9.x.

## Configuraciones

Este documento usa estas configuraciones.

- [Router de la serie 2500 de Cisco que ejecuta la versión 12.0\(5\)T del software del IOS de Cisco](#)
- [Cisco Secure ACS para UNIX 2.3](#)
- [Cisco Secure ACS para Windows 3.2](#)

## Definición de Listas de Acceso Numeradas en el Router

**Cisco 2500 Series Router que ejecuta Cisco IOS Software Release 12.0(5)T**

```
Current configuration:
!
version 12.0
service timestamps debug uptime
service timestamps log uptime
no service password-encryption
```

```
!  
hostname koala  
!  
aaa new-model  
!  
!--- These three lines of the configuration !--- are  
specific to Cisco IOS Software Release 12.0.5.T and  
later. !--- See the Commands for Other Cisco IOS  
Releases section for commands !--- for other Cisco IOS  
releases. ! aaa authentication login default local group  
tacacs+  
aaa authentication ppp default if-needed group tacacs+  
aaa authorization network default group tacacs+  
enable secret 5 $1$mnZQ$g6XdsgVnnYjEa.17v.Pijl  
enable password ww  
!  
username john password 0 doe  
!  
ip subnet-zero  
!  
cns event-service server  
!  
interface Ethernet0  
ip address 10.31.1.5 255.255.255.0  
no ip directed-broadcast  
no mop enabled  
!  
interface Serial0  
ip address 11.11.11.11 255.255.255.0  
no ip directed-broadcast  
no ip mroute-cache  
no fair-queue  
!  
interface Serial11  
ip address 12.12.12.12 255.255.255.0  
no ip directed-broadcast  
!  
interface Async1  
ip unnumbered Ethernet0  
no ip directed-broadcast  
encapsulation ppp  
no ip route-cache  
no ip mroute-cache  
async mode dedicated  
peer default ip address pool mypool  
fair-queue 64 16 0  
no cdp enable  
ppp authentication chap  
!  
ip local pool mypool 1.1.1.1 1.1.1.5  
ip classless  
ip route 0.0.0.0 0.0.0.0 10.31.1.1  
ip route 9.9.9.0 255.255.255.0 11.11.11.12  
ip route 15.15.15.0 255.255.255.0 12.12.12.13  
no ip http server  
!  
!--- Access list 101 is defined on the NAS. access-list  
101 permit icmp 1.1.1.0 0.0.0.255 9.9.9.0 0.0.0.255  
access-list 101 permit tcp 1.1.1.0 0.0.0.255 15.15.15.0  
0.0.0.255  
dialer-list 1 protocol ip permit  
dialer-list 1 protocol ipx permit  
!  
!--- Specify TACACS+ server host and key. tacacs-server
```

```
host 172.18.124.111
tacacs-server key cisco
!
line con 0
transport input none
line 1
modem InOut
transport input all
stopbits 1
speed 115200
flowcontrol hardware
line 2 16
line aux 0
line vty 0 4
password ww
!
end
```

## [Comandos para otras versiones del software del IOS de Cisco](#)

**Nota:** Para utilizar estos comandos, quite los comandos en negrita de la configuración [Cisco 2500 Series Router](#) y pegue estos comandos en, según lo dictado por su versión de Cisco IOS Software.

### Cisco IOS Software Release 11.3.3.T a 12.0.5.T

```
aaa authentication login default tacacs+ local
aaa authentication ppp default if-needed tacacs+ local
aaa authorization network default tacacs+
```

### Cisco IOS Software Release 11.1 a 11.3.3.T

```
aaa authentication login default tacacs+
aaa authentication ppp default if-needed tacacs+
aaa authorization network tacacs+
```

## [Configuración del servidor - TACACS+ Freeware](#)

```
user = chaprtr {
chap = cleartext chaprtr
service = ppp protocol = ip {
inacl=101
}
}
```

## [Configuración del servidor - Cisco Secure UNIX - TACACS+](#)

```
rtp-berry# ./ViewProfile -p 9900 -u chaprtr
User Profile Information
user = chaprtr{
profile_id = 182
set server current-failed-logins = 1
profile_cycle = 2
service=ppp {
protocol=lcp {
}
}
protocol=ip {
```

```
set inacl=101
}
}
password = chap "chaptr"
}
```

## [Configuración del servidor - Cisco Secure ACS para Windows 2.x y posterior - TACACS+](#)

Complete estos pasos para configurar Cisco Secure ACS para Windows para especificar qué ACL debe aplicar el NAS.

1. Haga clic en **Group Setup**, seleccione el grupo al que pertenece el usuario y haga clic en **Edit Settings**.
2. Haga clic en las casillas de verificación **PPP IP**, **In access control list** y **PPP LCP** en la sección TACACS+ Settings. Especifique el número de ACL que se aplicará (en este caso, 101) en el cuadro 'Lista de control de acceso'.
3. Marque **Enabled** para habilitar las opciones **PPP IP** y **PPP LCP**.

The screenshot shows the 'Group Setup' configuration page in Cisco Secure ACS. The 'Jump To' dropdown is set to 'Access Restrictions'. The 'Downloadable ACLs' section has 'Assign IP ACL' unchecked and the dropdown set to '-ACL DB EMPTY-'. The 'TACACS+ Settings' section has 'PPP IP' checked, with 'In access control list' set to '101' and 'Enabled' checked. 'PPP LCP' is also checked, with 'Enabled' checked. 'Shell (exec)' is unchecked. At the bottom are 'Submit', 'Submit + Restart', and 'Cancel' buttons.

Section	Option	Value
Downloadable ACLs	Assign IP ACL:	-ACL DB EMPTY-
	PPP IP	Checked
	In access control list	101
	Enabled	Checked
TACACS+ Settings	PPP LCP	Checked
	Callback line	
	Callback rotary	
	No callback verify	Checked
	Enabled	Checked
	Shell (exec)	Unchecked
Shell (exec)	Access control list	
	Auto command	

## [Depuración del router de ejemplo](#)

```
koala#show debug
```

```
General OS:
```

```
TACACS access control debugging is on
```

```
AAA Authentication debugging is on
```

```
AAA Authorization debugging is on
```

```
koala#show ip access-lists
```

```
Extended IP access list 101
```

```
permit icmp 1.1.1.0 0.0.0.255 9.9.9.0 0.0.0.255 log (2 matches)
```

```
permit tcp 1.1.1.0 0.0.0.255 15.15.15.0 0.0.0.255 log (11 matches)
```

```
koala#
```

```
4d05h: As1 AAA/AUTHOR/FSM: (0): LCP succeeds trivially
```

```
4d05h: %LINK-3-UPDOWN: Interface Async1, changed state to up
```

```
4d05h: AAA: parse name=Async1 idb type=10 tty=1
```

```
4d05h: AAA: name=Async1 flags=0x11 type=4 shelf=0 slot=0
```

```
adapter=0 port=1 channel=0
```

```
4d05h: AAA/MEMORY: create_user (0x54F934) user='chaptr' ruser=''
```

```
port='Async1' rem_addr='async' authn_type=CHAP
```

```
service=PPP priv=1
```

```
4d05h: AAA/AUTHEN/START (1203050692): port='Async1' list=''
```

```
action=LOGIN service=PPP
```

```
4d05h: AAA/AUTHEN/START (1203050692): using "default" list
```

```
4d05h: AAA/AUTHEN (1203050692): status = UNKNOWN
```

```
4d05h: AAA/AUTHEN/START (1203050692): Method=tacacs+ (tacacs+)
```

```
4d05h: TAC+: send AUTHEN/START packet ver=193 id=1203050692
```

```
4d05h: TAC+: Using default tacacs server-group "tacacs+" list.
```

```
4d05h: TAC+: Opening TCP/IP to 172.18.124.111/49 timeout=5
```

```
4d05h: TAC+: Opened TCP/IP handle 0x538778 to 172.18.124.111/49
```

```
4d05h: TAC+: 172.18.124.111 (1203050692) AUTHEN/START/LOGIN/CHAP queued
```

```
4d05h: TAC+: (1203050692) AUTHEN/START/LOGIN/CHAP processed
```

```
4d05h: TAC+: ver=192 id=1203050692 received AUTHEN status = GETPASS
```

```
4d05h: TAC+: Closing TCP/IP 0x538778 connection to 172.18.124.111/49
```

```
4d05h: TAC+: Opening TCP/IP to 172.18.124.111/49 timeout=5
```

```
4d05h: TAC+: Opened TCP/IP handle 0x538BBC to 172.18.124.111/49
```

```
4d05h: TAC+: Opened 172.18.124.111 index=1
```

```
4d05h: AAA: parse name=Async1 idb type=-1 tty=-1
```

```
4d05h: AAA: name=Async1 flags=0x11 type=4 shelf=0 slot=0 adapter=0
```

```
port=1 channel=0
```

```
4d05h: AAA/MEMORY: create_user (0x19FCF8) user='chaptr' ruser=''
```

```
port='Async1' rem_addr='async' authn_type=CHAP service=PPP priv=1
```

```
4d05h: TAC+: rev0 inbound chap for id=1203050692 using id=2966879003
```

```
4d05h: TAC+: 172.18.124.111 (2966879003) AUTHEN/START/SENDPASS/CHAP queued
```

```
4d05h: TAC+: (2966879003) AUTHEN/START/SENDPASS/CHAP processed
```

```
4d05h: TAC+: ver=192 id=2966879003 received AUTHEN status = PASS
```

```
4d05h: TAC+: rev0 inbound chap SENDPASS status=PASS for id=1203050692
```

```
4d05h: TAC+: rev0 inbound chap MD5 compare OK
```

```
4d05h: AAA/MEMORY: free_user (0x19FCF8) user='chaptr' ruser=''
```

```
port='Async1' rem_addr='async' authn_type=CHAP service=PPP priv=1
```

```
4d05h: TAC+: Closing TCP/IP 0x538BBC connection to 172.18.124.111/49
```

```
4d05h: AAA/AUTHEN (1203050692): status = PASS
```

```
4d05h: As1 AAA/AUTHOR/LCP: Authorize LCP
```

```
4d05h: As1 AAA/AUTHOR/LCP (3002156107): Port='Async1' list=' service=NET
```

```
4d05h: AAA/AUTHOR/LCP: As1 (3002156107) user='chaptr'
```

```
4d05h: As1 AAA/AUTHOR/LCP (3002156107): send AV service=ppp
```

```
4d05h: As1 AAA/AUTHOR/LCP (3002156107): send AV protocol=lcp
```

```
4d05h: As1 AAA/AUTHOR/LCP (3002156107): found list "default"
```

```
4d05h: As1 AAA/AUTHOR/LCP (3002156107): Method=tacacs+ (tacacs+)
```

```
4d05h: AAA/AUTHOR/TAC+: (3002156107): user=chaptr
```

```
4d05h: AAA/AUTHOR/TAC+: (3002156107): send AV service=ppp
```

```
4d05h: AAA/AUTHOR/TAC+: (3002156107): send AV protocol=lcp
```

```
4d05h: TAC+: using previously set server 172.18.124.111 from group tacacs+
```

```
4d05h: TAC+: Opening TCP/IP to 172.18.124.111/49 timeout=5
4d05h: TAC+: Opened TCP/IP handle 0x539000 to 172.18.124.111/49
4d05h: TAC+: Opened 172.18.124.111 index=1
4d05h: TAC+: 172.18.124.111 (3002156107) AUTHOR/START queued
4d05h: TAC+: (3002156107) AUTHOR/START processed
4d05h: TAC+: (3002156107): received author response status = PASS_ADD
4d05h: TAC+: Closing TCP/IP 0x539000 connection to 172.18.124.111/49
4d05h: As1 AAA/AUTHOR (3002156107): Post authorization status = PASS_ADD
4d05h: As1 AAA/AUTHOR/FSM: (0): Can we start IPCP?
4d05h: As1 AAA/AUTHOR/FSM (1577158668): Port='Async1' list='' service=NET
4d05h: AAA/AUTHOR/FSM: As1 (1577158668) user='chaptrtr'
4d05h: As1 AAA/AUTHOR/FSM (1577158668): send AV service=ppp
4d05h: As1 AAA/AUTHOR/FSM (1577158668): send AV protocol=ip
4d05h: As1 AAA/AUTHOR/FSM (1577158668): found list "default"
4d05h: As1 AAA/AUTHOR/FSM (1577158668): Method=tacacs+ (tacacs+)
4d05h: AAA/AUTHOR/TAC+: (1577158668): user=chaptrtr
4d05h: AAA/AUTHOR/TAC+: (1577158668): send AV service=ppp
4d05h: AAA/AUTHOR/TAC+: (1577158668): send AV protocol=ip
4d05h: TAC+: using previously set server 172.18.124.111 from group tacacs+
4d05h: TAC+: Opening TCP/IP to 172.18.124.111/49 timeout=5
4d05h: TAC+: Opened TCP/IP handle 0x539444 to 172.18.124.111/49
4d05h: TAC+: Opened 172.18.124.111 index=1
4d05h: TAC+: 172.18.124.111 (1577158668) AUTHOR/START queued
4d05h: TAC+: (1577158668) AUTHOR/START processed
4d05h: TAC+: (1577158668): received author response status = PASS_ADD
4d05h: TAC+: Closing TCP/IP 0x539444 connection to 172.18.124.111/49
4d05h: As1 AAA/AUTHOR (1577158668): Post authorization status = PASS_ADD
4d05h: As1 AAA/AUTHOR/FSM: We can start IPCP
4d05h: %LINEPROTO-5-UPDOWN: Line protocol on Interface Async1,
changed state to up
4d05h: As1 AAA/AUTHOR/IPCP: Start. Her address 0.0.0.0, we want 0.0.0.0
4d05h: As1 AAA/AUTHOR/IPCP: Processing AV service=ppp
4d05h: As1 AAA/AUTHOR/IPCP: Processing AV protocol=ip
4d05h: As1 AAA/AUTHOR/IPCP: Processing AV inacl=101
4d05h: As1 AAA/AUTHOR/IPCP: Authorization succeeded
4d05h: As1 AAA/AUTHOR/IPCP: Done. Her address 0.0.0.0, we want 0.0.0.0
4d05h: As1 AAA/AUTHOR/IPCP: Start. Her address 0.0.0.0, we want 1.1.1.2
4d05h: As1 AAA/AUTHOR/IPCP: Processing AV service=ppp
4d05h: As1 AAA/AUTHOR/IPCP: Processing AV protocol=ip
  !--- Apply ACL 101 in the inbound direction. 4d05h: As1 AAA/AUTHOR/IPCP: Processing AV
inacl=101
4d05h: As1 AAA/AUTHOR/IPCP: Authorization succeeded
4d05h: As1 AAA/AUTHOR/IPCP: Done. Her address 0.0.0.0, we want 1.1.1.2
4d05h: As1 AAA/AUTHOR/IPCP: Start. Her address 1.1.1.2, we want 1.1.1.2
4d05h: As1 AAA/AUTHOR/IPCP (1659098608): Port='Async1' list=''
service=NET
4d05h: AAA/AUTHOR/IPCP: As1 (1659098608) user='chaptrtr'
4d05h: As1 AAA/AUTHOR/IPCP (1659098608): send AV service=ppp
4d05h: As1 AAA/AUTHOR/IPCP (1659098608): send AV protocol=ip
4d05h: As1 AAA/AUTHOR/IPCP (1659098608): send AV addr*1.1.1.2
4d05h: As1 AAA/AUTHOR/IPCP (1659098608): found list "default"
4d05h: As1 AAA/AUTHOR/IPCP (1659098608): Method=tacacs+ (tacacs+)
4d05h: AAA/AUTHOR/TAC+: (1659098608): user=chaptrtr
4d05h: AAA/AUTHOR/TAC+: (1659098608): send AV service=ppp
4d05h: AAA/AUTHOR/TAC+: (1659098608): send AV protocol=ip
4d05h: AAA/AUTHOR/TAC+: (1659098608): send AV addr*1.1.1.2
4d05h: TAC+: using previously set server 172.18.124.111 from
group tacacs+
4d05h: TAC+: Opening TCP/IP to 172.18.124.111/49 timeout=5
4d05h: TAC+: Opened TCP/IP handle 0x538BBC to 172.18.124.111/49
4d05h: TAC+: Opened 172.18.124.111 index=1
4d05h: TAC+: 172.18.124.111 (1659098608) AUTHOR/START queued
4d05h: TAC+: (1659098608) AUTHOR/START processed
4d05h: TAC+: (1659098608): received author response status = PASS_REPL
```



```

4d05h: TAC+: Closing TCP/IP 0x538BBC connection to 172.18.124.111/49
4d05h: As1 AAA/AUTHOR (1659098608): Post authorization status = PASS_REPL
4d05h: As1 AAA/AUTHOR/IPCP: Reject 1.1.1.2, using 1.1.1.2
4d05h: As1 AAA/AUTHOR/IPCP: Processing AV service=ppp
4d05h: As1 AAA/AUTHOR/IPCP: Processing AV protocol=ip
4d05h: As1 AAA/AUTHOR/IPCP: Processing AV inacl=101
4d05h: As1 AAA/AUTHOR/IPCP: Processing AV addr*1.1.1.2
4d05h: As1 AAA/AUTHOR/IPCP: Authorization succeeded
4d05h: As1 AAA/AUTHOR/IPCP: Done. Her address 1.1.1.2, we want 1.1.1.2
4d05h: %SEC-6-IPACCESSLOGDP: list 101 permitted icmp 1.1.1.2 ->
9.9.9.9 (0/0), 3 packets
koala#show ip access-lists
Extended IP access list 101
permit icmp 1.1.1.0 0.0.0.255 9.9.9.0 0.0.0.255 log (5 matches)
permit tcp 1.1.1.0 0.0.0.255 15.15.15.0 0.0.0.255 log (11 matches)
koala#

```

## Definir listas de acceso en el servidor

**Nota:** Las sentencias de ruta no tienen que ser transmitidas desde el servidor al router. Normalmente, el usuario de marcación recoge las rutas del router. La presencia de las sentencias de ruta en el router depende de si las rutas se transmiten desde el servidor o se recogen desde el router:

```

ip route 9.9.9.0 255.255.255.0 11.11.11.12
ip route 15.15.15.0 255.255.255.0 12.12.12.13

```

En esta configuración de ejemplo, el paso de las rutas hacia abajo desde el servidor es sólo con fines ilustrativos.

### Configuración del router

```

Current configuration:
!
version 12.0
service timestamps debug uptime
service timestamps log uptime
no service password-encryption
!
hostname koala
!
aaa new-model
!
!--- These three lines of the configuration !--- are
specific to Cisco IOS Software Release 12.0.5.T and
later. !--- See the Commands for Other IOS Releases
section for !--- commands for other Cisco IOS Software
releases. ! aaa authentication login default group
tacacs+ none
aaa authentication ppp default if-needed group tacacs+
aaa authorization network default group tacacs+
enable secret 5 $l$mnZQ$g6XdsgVnnYjEa.17v.Pijl
enable password ww
!
username john password 0 doe
!
ip subnet-zero
!
cns event-service server
!
interface Ethernet0

```

```
ip address 10.31.1.5 255.255.255.0
no ip directed-broadcast
no mop enabled
!
interface Serial0
ip address 11.11.11.11 255.255.255.0
no ip directed-broadcast
no ip mroute-cache
no fair-queue
!
interface Serial1
ip address 12.12.12.12 255.255.255.0
no ip directed-broadcast
!
interface Async1
ip unnumbered Ethernet0
no ip directed-broadcast
encapsulation ppp
no ip route-cache
no ip mroute-cache
async mode dedicated
peer default ip address pool mypool
fair-queue 64 16 0
no cdp enable
ppp authentication chap
!
ip local pool mypool 1.1.1.1 1.1.1.5
ip classless
ip route 0.0.0.0 0.0.0.0 10.31.1.1
ip route 172.17.192.0 255.255.255.0 10.31.1.1
ip route 172.18.124.0 255.255.255.0 10.31.1.1
ip route 172.18.125.0 255.255.255.0 10.31.1.1
no ip http server
!
dialer-list 1 protocol ip permit
dialer-list 1 protocol ipx permit
!
tacacs-server host 172.18.124.111
tacacs-server key cisco
!
line con 0
transport input none
line 1
autoselect during-login
autoselect ppp
modem InOut
transport input all
stopbits 1
speed 115200
flowcontrol hardware
line 2 16
line aux 0
line vty 0 4
password ww
!
end
```

## [Comandos para otras versiones del software del IOS de Cisco](#)

**Nota:** Para utilizar estos comandos, quite los comandos en **negrita** de la configuración [del router](#) y pegue estos comandos en, según lo dictado por su versión de Cisco IOS Software.

## Cisco IOS Software Release 11.3.3.T a 12.0.5.T

```
aaa authentication login default tacacs+ local
aaa authentication ppp default if-needed tacacs+ local
aaa authorization network default tacacs+
```

## Cisco IOS Software Release 11.3 a 11.3.3.T

```
aaa authentication login default tacacs+
aaa authentication ppp default if-needed tacacs+
aaa authorization network tacacs+
```

### [Configuración del servidor - TACACS+ Freeware](#)

```
user = chaprtr {
chap = cleartext chaprtr
service = ppp protocol = ip {
route#1 = "9.9.9.9 255.255.255.255 11.11.11.12"
route#2 = "15.15.15.15 255.255.255.255 12.12.12.13"
route#3 = "15.15.15.16 255.255.255.255 12.12.12.13"
inacl#1 = "permit icmp 1.1.1.0 0.0.0.255 9.9.9.0 0.0.0.255"
inacl#2 = "permit tcp 1.1.1.0 0.0.0.255 15.15.15.0 0.0.0.255"
}
}
```

### [Configuración del servidor - Cisco Secure UNIX - TACACS+](#)

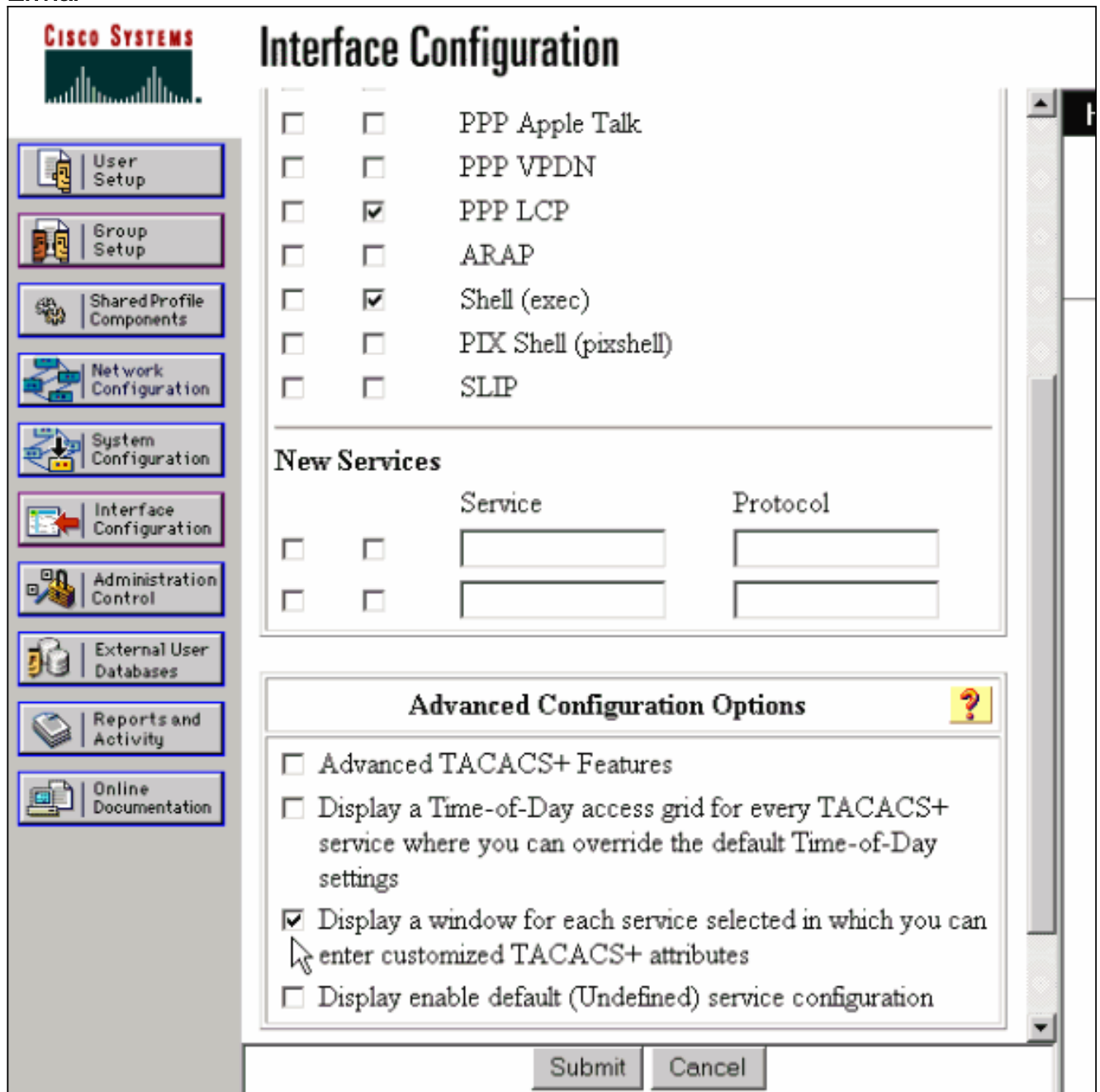
```
rtp-berry# ./ViewProfile -p 9900 -u chaprtr
User Profile Information
user = chaprtr{
profile_id = 183
set server current-failed-logins = 1
profile_cycle = 4
service=ppp {
protocol=lcp {
}
protocol=ip {
set route#1="9.9.9.9 255.255.255.255 11.11.11.12"
set route#2="15.15.15.15 255.255.255.255 12.12.12.13"
set route#3="15.15.15.16 255.255.255.255 12.12.12.13"
set inacl#1="permit icmp 1.1.1.0 0.0.0.255 9.9.9.0 0.0.0.255"
set inacl#2="permit tcp 1.1.1.0 0.0.0.255 15.15.15.0 0.0.0.255"
}
}
password = chap "chaprtr"
}
```

### [Configuración del servidor - Cisco Secure Windows 2.x - TACACS+](#)

Complete estos pasos para configurar Cisco Secure para Windows para que pase las ACL al NAS.

1. Haga clic en **Interface Configuration** y seleccione **TACACS+ Cisco**.
2. Marque **Mostrar una ventana para cada servicio seleccionado en la que puede ingresar atributos TACACS+ personalizados** en la sección 'Opciones de configuración avanzada' y

haga clic en **Enviar**.



3. Haga clic en **Group Setup**, seleccione el grupo al que pertenece el usuario y haga clic en **Edit Settings**.
4. Vaya a la sección PPP IP y haga clic en las casillas de verificación **PPP IP**, **Atributos personalizados** y **Habilitar** desde TACACS+ Settings. Introduzca el texto que se muestra aquí en el cuadro Atributos personalizados y haga clic en **Enviar**.

```
route#1=9.9.9.9 255.255.255.255 11.11.11.12
route#2=15.15.15.15 255.255.255.255 12.12.12.13
route#3=15.15.15.16 255.255.255.255 12.12.12.13
inacl#1=permit icmp 1.1.1.0 0.0.0.255 9.9.9.0 0.0.0.255
inacl#2=permit tcp 1.1.1.0 0.0.0.255 15.15.15.0 0.0.0.255
```

**CISCO SYSTEMS**

# Group Setup

Jump To Access Restrictions

## TACACS+ Settings

**PPP IP**

In access control list

Out access control list

Route

Routing ✓ Enabled

Custom attributes

```
255.255.255.255 12.12.12.13
inac1#1=permit icmp 1.1.1.0
0.0.0.255 9.9.9.0 0.0.0.255
inac1#2=permit tcp 1.1.1.0
0.0.0.255 15.15.15.0 0.0.0.255
```

**PPP LCP**

Callback line

Callback rotary

No callback verify ✓ Enabled

Custom attributes

Submit Submit + Restart Cancel

## [Depuración del router de ejemplo](#)

Este perfil de usuario se utilizó para crear este resultado de depuración.

```
chaptr
{
login = cleartext cisco
chap = cleartext
chaptr service = ppp
protocol = ip
{
route#1 = "9.9.9.9 255.255.255.255 11.11.11.12"
route#2 = "15.15.15.15 255.255.255.255 12.12.12.13"
route#3 = "15.15.15.16 255.255.255.255 12.12.12.13"
inac1#1 = "permit icmp 1.1.1.0 0.0.0.255 9.9.9.0 0.0.0.255"
inac1#2 = "permit tcp 1.1.1.0 0.0.0.255 15.15.15.0 0.0.0.255"
}
}
```

koala#

```
*Mar 1 01:22:39.963: As1 LCP: I CONFREQ [Closed] id 0 len 23
*Mar 1 01:22:39.967: As1 LCP: ACCM 0x00000000 (0x020600000000)
*Mar 1 01:22:39.971: As1 LCP: MagicNumber 0x000034BD (0x0506000034BD)
*Mar 1 01:22:39.971: As1 LCP: PFC (0x0702)
*Mar 1 01:22:39.975: As1 LCP: ACFC (0x0802)
*Mar 1 01:22:39.975: As1 LCP: Callback 6 (0x0D0306)
*Mar 1 01:22:39.979: As1 LCP: Lower layer not up, Fast Starting
*Mar 1 01:22:39.983: As1 PPP: Treating connection as a dedicated line
*Mar 1 01:22:39.983: As1 PPP: Phase is ESTABLISHING, Active Open [0 sess, 0 load]
*Mar 1 01:22:39.987: As1 AAA/AUTHOR/FSM: (0): LCP succeeds trivially
*Mar 1 01:22:39.991: As1 LCP: O CONFREQ [Closed] id 30 len 25
*Mar 1 01:22:39.995: As1 LCP: ACCM 0x000A0000 (0x0206000A0000)
*Mar 1 01:22:39.999: As1 LCP: AuthProto CHAP (0x0305C22305)
*Mar 1 01:22:40.003: As1 LCP: MagicNumber 0xE069F1B8 (0x0506E069F1B8)
*Mar 1 01:22:40.003: As1 LCP: PFC (0x0702)
*Mar 1 01:22:40.007: As1 LCP: ACFC (0x0802)
*Mar 1 01:22:40.011: As1 LCP: O CONFREQ [REQsent] id 0 len 7
*Mar 1 01:22:40.011: As1 LCP: Callback 6 (0x0D0306)
01:22:40: %LINK-3-UPDOWN: Interface Async1, changed state to up
*Mar 1 01:22:40.139: As1 LCP: I CONFACK [REQsent] id 30 len 25
*Mar 1 01:22:40.143: As1 LCP: ACCM 0x000A0000 (0x0206000A0000)
*Mar 1 01:22:40.143: As1 LCP: AuthProto CHAP (0x0305C22305)
*Mar 1 01:22:40.147: As1 LCP: MagicNumber 0xE069F1B8 (0x0506E069F1B8)
*Mar 1 01:22:40.151: As1 LCP: PFC (0x0702)
*Mar 1 01:22:40.151: As1 LCP: ACFC (0x0802)
*Mar 1 01:22:40.155: As1 LCP: I CONFREQ [ACKrcvd] id 1 len 20
*Mar 1 01:22:40.159: As1 LCP: ACCM 0x00000000 (0x020600000000)
*Mar 1 01:22:40.163: As1 LCP: MagicNumber 0x000034BD (0x0506000034BD)
*Mar 1 01:22:40.163: As1 LCP: PFC (0x0702)
*Mar 1 01:22:40.167: As1 LCP: ACFC (0x0802)
*Mar 1 01:22:40.171: As1 LCP: O CONFACK [ACKrcvd] id 1 len 20
*Mar 1 01:22:40.171: As1 LCP: ACCM 0x00000000 (0x020600000000)
*Mar 1 01:22:40.175: As1 LCP: MagicNumber 0x000034BD (0x0506000034BD)
*Mar 1 01:22:40.179: As1 LCP: PFC (0x0702)
*Mar 1 01:22:40.179: As1 LCP: ACFC (0x0802)
*Mar 1 01:22:40.183: As1 LCP: State is Open
*Mar 1 01:22:40.183: As1 PPP: Phase is AUTHENTICATING, by this end
[0 sess, 1 load]
*Mar 1 01:22:40.187: As1 CHAP: O CHALLENGE id 10 len 26 from "koala"
*Mar 1 01:22:40.295: As1 LCP: I IDENTIFY [Open] id 2 len 18 magic
0x000034BD MSRASV4.00
*Mar 1 01:22:40.307: As1 LCP: I IDENTIFY [Open] id 3 len 21 magic
0x000034BD MSRAS-1-ZEKIE
*Mar 1 01:22:40.315: As1 CHAP: I RESPONSE id 10 len 28 from "chaptrtr"
*Mar 1 01:22:40.323: AAA: parse name=Async1 idb type=10 tty=1
*Mar 1 01:22:40.323: AAA: name=Async1 flags=0x11 type=4 shelf=0 slot=0
adapter=0 port=1 channel=0
*Mar 1 01:22:40.327: AAA/MEMORY: create_user (0x4ED58C) user='chaptrtr'
ruser='' port='Async1' rem_addr='async' authen_type=CHAP service=PPP
priv=1
*Mar 1 01:22:40.331: AAA/AUTHEN/START (2439833946): port='Async1'
list='' action=LOGIN service=PPP
*Mar 1 01:22:40.335: AAA/AUTHEN/START (2439833946): using "default" list
*Mar 1 01:22:40.339: AAA/AUTHEN (2439833946): status = UNKNOWN
*Mar 1 01:22:40.339: AAA/AUTHEN/START (2439833946): Method=tacacs+ (tacacs+)
*Mar 1 01:22:40.343: TAC+: send AUTHEN/START packet ver=193 id=2439833946
*Mar 1 01:22:40.347: TAC+: Using default tacacs server-group "tacacs+" list.
*Mar 1 01:22:40.347: TAC+: Opening TCP/IP to 172.18.124.111/49 timeout=5
*Mar 1 01:22:40.359: TAC+: Opened TCP/IP handle 0x4EDDF8 to 172.18.124.111/49
*Mar 1 01:22:40.367: TAC+: 172.18.124.111 (2439833946)
AUTHEN/START/LOGIN/CHAP queued
*Mar 1 01:22:40.667: TAC+: (2439833946) AUTHEN/START/LOGIN/CHAP processed
*Mar 1 01:22:40.671: TAC+: ver=192 id=2439833946 received AUTHEN
```

```
status = GETPASS
*Mar 1 01:22:40.675: TAC+: Closing TCP/IP 0x4EDDF8 connection to
172.18.124.111/49
*Mar 1 01:22:40.679: TAC+: Opening TCP/IP to 172.18.124.111/49 timeout=5
*Mar 1 01:22:40.695: TAC+: Opened TCP/IP handle 0x4EE23C to 172.18.124.111/49
*Mar 1 01:22:40.695: TAC+: Opened 172.18.124.111 index=1
*Mar 1 01:22:40.699: AAA: parse name=Async1 idb type=-1 tty=-1
*Mar 1 01:22:40.703: AAA: name=Async1 flags=0x11 type=4 shelf=0 slot=0
adapter=0 port=1 channel=0
*Mar 1 01:22:40.707: AAA/MEMORY: create_user (0x4EC300) user='chaptrtr'
ruser='' port='Async1' rem_addr='async' authen_type=CHAP service=PPP priv=1
*Mar 1 01:22:40.711: TAC+: rev0 inbound chap for id=2439833946 using
id=1730351499
*Mar 1 01:22:40.715: TAC+: 172.18.124.111 (1730351499)
AUTHEN/START/SENDPASS/CHAP queued
*Mar 1 01:22:40.915: TAC+: (1730351499) AUTHEN/START/SENDPASS/CHAP processed
*Mar 1 01:22:40.919: TAC+: ver=192 id=1730351499 received AUTHEN
status = PASS
*Mar 1 01:22:40.923: TAC+: rev0 inbound chap SENDPASS status=PASS
for id=2439833946
*Mar 1 01:22:40.927: TAC+: rev0 inbound chap MD5 compare OK
*Mar 1 01:22:40.927: AAA/MEMORY: free_user (0x4EC300) user='chaptrtr'
ruser='' port='Async1' rem_addr='async' authen_type=CHAP service=PPP
priv=1
*Mar 1 01:22:40.935: TAC+: Closing TCP/IP 0x4EE23C connection to
172.18.124.111/49
*Mar 1 01:22:40.939: AAA/AUTHEN (2439833946): status = PASS
*Mar 1 01:22:40.943: As1 AAA/AUTHOR/LCP: Authorize LCP
*Mar 1 01:22:40.947: As1 AAA/AUTHOR/LCP (4250537500): Port='Async1'
list='' service=NET
*Mar 1 01:22:40.947: AAA/AUTHOR/LCP: As1 (4250537500) user='chaptrtr'
*Mar 1 01:22:40.951: As1 AAA/AUTHOR/LCP (4250537500): send AV service=ppp
*Mar 1 01:22:40.955: As1 AAA/AUTHOR/LCP (4250537500): send AV protocol=lcp
*Mar 1 01:22:40.955: As1 AAA/AUTHOR/LCP (4250537500): found list "default"
*Mar 1 01:22:40.959: As1 AAA/AUTHOR/LCP (4250537500):
Method=tacacs+ (tacacs+)
*Mar 1 01:22:40.963: AAA/AUTHOR/TAC+: (4250537500): user=chaptrtr
*Mar 1 01:22:40.963: AAA/AUTHOR/TAC+: (4250537500): send AV service=ppp
*Mar 1 01:22:40.967: AAA/AUTHOR/TAC+: (4250537500): send AV protocol=lcp
*Mar 1 01:22:40.971: TAC+: using previously set server 172.18.124.111
from group tacacs+
*Mar 1 01:22:40.971: TAC+: Opening TCP/IP to 172.18.124.111/49 timeout=5
*Mar 1 01:22:40.987: TAC+: Opened TCP/IP handle 0x4EE680 to 172.18.124.111/49
*Mar 1 01:22:40.991: TAC+: Opened 172.18.124.111 index=1
*Mar 1 01:22:40.999: TAC+: 172.18.124.111 (4250537500) AUTHOR/START queued
*Mar 1 01:22:41.195: TAC+: (4250537500) AUTHOR/START processed
*Mar 1 01:22:41.199: TAC+: (4250537500): received author response
status = PASS_ADD
*Mar 1 01:22:41.203: TAC+: Closing TCP/IP 0x4EE680 connection to
172.18.124.111/49
*Mar 1 01:22:41.207: As1 AAA/AUTHOR (4250537500): Post authorization
status = PASS_ADD
*Mar 1 01:22:41.215: As1 CHAP: 0 SUCCESS id 10 len 4
*Mar 1 01:22:41.219: As1 PPP: Phase is UP [0 sess, 0 load]
*Mar 1 01:22:41.223: As1 AAA/AUTHOR/FSM: (0): Can we start IPCP?
*Mar 1 01:22:41.223: As1 AAA/AUTHOR/FSM (2403262371): Port='Async1'
list='' service=NET
*Mar 1 01:22:41.227: AAA/AUTHOR/FSM: As1 (2403262371) user='chaptrtr'
*Mar 1 01:22:41.231: As1 AAA/AUTHOR/FSM (2403262371): send AV service=ppp
*Mar 1 01:22:41.231: As1 AAA/AUTHOR/FSM (2403262371): send AV protocol=ip
*Mar 1 01:22:41.235: As1 AAA/AUTHOR/FSM (2403262371): found list "default"
*Mar 1 01:22:41.239: As1 AAA/AUTHOR/FSM (2403262371):
Method=tacacs+ (tacacs+)
*Mar 1 01:22:41.239: AAA/AUTHOR/TAC+: (2403262371): user=chaptrtr
```

```
*Mar 1 01:22:41.243: AAA/AUTHOR/TAC+: (2403262371): send AV service=ppp
*Mar 1 01:22:41.243: AAA/AUTHOR/TAC+: (2403262371): send AV protocol=ip
*Mar 1 01:22:41.247: TAC+: using previously set server 172.18.124.111
from group tacacs+
*Mar 1 01:22:41.251: TAC+: Opening TCP/IP to 172.18.124.111/49 timeout=5
*Mar 1 01:22:41.263: TAC+: Opened TCP/IP handle 0x4EEAC4 to
172.18.124.111/49
*Mar 1 01:22:41.267: TAC+: Opened 172.18.124.111 index=1
*Mar 1 01:22:41.275: TAC+: 172.18.124.111 (2403262371) AUTHOR/START queued
*Mar 1 01:22:41.323: As1 CCP: I CONFREQ [Not negotiated] id 4 len 12
*Mar 1 01:22:41.327: As1 CCP: OUI (0x0002)
*Mar 1 01:22:41.327: As1 CCP: MS-PPC supported bits 0x00007080
(0x120600007080)
*Mar 1 01:22:41.335: As1 LCP: O PROTREQ [Open] id 31 len 18 protocol CCP
(0x80FD0104000C0002120600007080)
*Mar 1 01:22:41.339: As1 IPCP: I CONFREQ [Closed] id 5 len 40
*Mar 1 01:22:41.343: As1 IPCP: CompressType VJ 15 slots CompressSlotID
(0x0206002D0F01)
*Mar 1 01:22:41.347: As1 IPCP: Address 0.0.0.0 (0x030600000000)
*Mar 1 01:22:41.351: As1 IPCP: PrimaryDNS 0.0.0.0 (0x810600000000)
*Mar 1 01:22:41.355: As1 IPCP: PrimaryWINS 0.0.0.0 (0x820600000000)
*Mar 1 01:22:41.359: As1 IPCP: SecondaryDNS 0.0.0.0 (0x830600000000)
*Mar 1 01:22:41.363: As1 IPCP: SecondaryWINS 0.0.0.0 (0x840600000000)
*Mar 1 01:22:41.607: TAC+: (2403262371) AUTHOR/START processed
*Mar 1 01:22:41.623: TAC+: (2403262371): received author response
status = PASS_ADD
*Mar 1 01:22:41.627: TAC+: Closing TCP/IP 0x4EEAC4 connection to
172.18.124.111/49
*Mar 1 01:22:41.635: As1 AAA/AUTHOR (2403262371): Post authorization
status = PASS_ADD
*Mar 1 01:22:41.647: As1 AAA/AUTHOR/FSM: We can start IPCP
*Mar 1 01:22:41.651: As1 IPCP: O CONFREQ [Closed] id 7 len 10
*Mar 1 01:22:41.655: As1 IPCP: Address 10.31.1.5 (0x03060A1F0105)
*Mar 1 01:22:41.659: As1 AAA/AUTHOR/FSM: (0): Can we start CDPCP?
*Mar 1 01:22:41.663: As1 AAA/AUTHOR/FSM (840307497): Port='Async1'
list='' service=NET
*Mar 1 01:22:41.667: AAA/AUTHOR/FSM: As1 (840307497) user='chaptrtr'
*Mar 1 01:22:41.671: As1 AAA/AUTHOR/FSM (840307497): send AV service=ppp
*Mar 1 01:22:41.671: As1 AAA/AUTHOR/FSM (840307497): send AV protocol=cdp
*Mar 1 01:22:41.675: As1 AAA/AUTHOR/FSM (840307497): found list "default"
*Mar 1 01:22:41.675: As1 AAA/AUTHOR/FSM (840307497): Method=tacacs+
(tacacs+)
*Mar 1 01:22:41.679: AAA/AUTHOR/TAC+: (840307497): user=chaptrtr
*Mar 1 01:22:41.683: AAA/AUTHOR/TAC+: (840307497): send AV service=ppp
*Mar 1 01:22:41.683: AAA/AUTHOR/TAC+: (840307497): send AV protocol=cdp
*Mar 1 01:22:41.687: TAC+: using previously set server 172.18.124.111
from group tacacs+
*Mar 1 01:22:41.691: TAC+: Opening TCP/IP to 172.18.124.111/49 timeout=5
*Mar 1 01:22:41.703: TAC+: Opened TCP/IP handle 0x4EE23C to
172.18.124.111/49
*Mar 1 01:22:41.707: TAC+: Opened 172.18.124.111 index=1
*Mar 1 01:22:41.715: TAC+: 172.18.124.111 (840307497) AUTHOR/START queued
*Mar 1 01:22:41.759: As1 IPCP: I CONFACK [REQsent] id 7 len 10
*Mar 1 01:22:41.763: As1 IPCP: Address 10.31.1.5 (0x03060A1F0105)
*Mar 1 01:22:41.915: TAC+: (840307497) AUTHOR/START processed
*Mar 1 01:22:41.923: TAC+: (840307497): received author response
status = FAIL
*Mar 1 01:22:41.927: TAC+: Closing TCP/IP 0x4EE23C connection to
172.18.124.111/49
*Mar 1 01:22:41.931: As1 AAA/AUTHOR (840307497): Post authorization
status = FAIL
*Mar 1 01:22:41.935: As1 AAA/AUTHOR/FSM: We cannot start CDPCP
*Mar 1 01:22:41.935: As1 CDPCP: State is Closed
01:22:42: %LINEPROTO-5-UPDOWN: Line protocol on Interface Async1,
```



```
changed state to up
*Mar 1 01:22:42.359: As1 PPP: Outbound cdp packet dropped,
CDPCP is Closed [starting negotiations]
*Mar 1 01:22:42.359: As1 CDPCP: State is Closed
*Mar 1 01:22:42.499: As1 PPP: Outbound cdp packet dropped,
CDPCP is Closed [starting negotiations]
*Mar 1 01:22:42.503: As1 CDPCP: State is Closed
*Mar 1 01:22:42.639: As1 PPP: Outbound cdp packet dropped,
CDPCP is Closed [starting negotiations]
*Mar 1 01:22:42.643: As1 CDPCP: State is Closed
*Mar 1 01:22:42.795: As1 PPP: Outbound cdp packet dropped,
CDPCP is Closed [starting negotiations]
*Mar 1 01:22:42.799: As1 CDPCP: State is Closed
*Mar 1 01:22:43.147: As1 CDPCP: TIMEout: State Closed
*Mar 1 01:22:43.151: As1 CDPCP: State is Listen
*Mar 1 01:22:43.155: As1 IPCP: I CONFREQ [ACKrcvd] id 5 len 40
*Mar 1 01:22:43.159: As1 IPCP: CompressType VJ 15 slots
CompressSlotID (0x0206002D0F01)
*Mar 1 01:22:43.163: As1 IPCP: Address 0.0.0.0 (0x030600000000)
*Mar 1 01:22:43.167: As1 IPCP: PrimaryDNS 0.0.0.0 (0x810600000000)
*Mar 1 01:22:43.171: As1 IPCP: PrimaryWINS 0.0.0.0 (0x820600000000)
*Mar 1 01:22:43.171: As1 IPCP: SecondaryDNS 0.0.0.0 (0x830600000000)
*Mar 1 01:22:43.175: As1 IPCP: SecondaryWINS 0.0.0.0 (0x840600000000)
*Mar 1 01:22:43.179: As1 AAA/AUTHOR/IPCP: Start. Her address 0.0.0.0,
we want 0.0.0.0
*Mar 1 01:22:43.183: As1 AAA/AUTHOR/IPCP: Processing AV service=ppp
*Mar 1 01:22:43.187: As1 AAA/AUTHOR/IPCP: Processing AV protocol=ip
!--- The NAS received the route statements and ACLs !--- *Mar 1
01:22:43.187: As1 AAA/AUTHOR/IPCP: Processing AV route#1=
9.9.9.9 255.255.255.255 11.11.11.12
*Mar 1 01:22:43.191: As1 AAA/AUTHOR/IPCP: Processing AV route#2=
15.15.15.15 255.255.255.255 12.12.12.13
*Mar 1 01:22:43.195: As1 AAA/AUTHOR/IPCP: Processing AV route#3=
15.15.15.16 255.255.255.255 12.12.12.13
*Mar 1 01:22:43.199: As1 AAA/AUTHOR/IPCP: Processing AV inacl#1=
permit icmp 1.1.1.0 0.0.0.255 9.9.9.0 0.0.0.255
*Mar 1 01:22:43.199: As1 AAA/AUTHOR/IPCP: Processing AV inacl#2=
permit tcp 1.1.1.0 0.0.0.255 15.15.15.0 0.0.0.255
*Mar 1 01:22:43.203: As1 AAA/AUTHOR/IPCP: Authorization succeeded
*Mar 1 01:22:43.207: As1 AAA/AUTHOR/IPCP: Done. Her address 0.0.0.0,
we want 0.0.0.0
*Mar 1 01:22:43.211: As1 IPCP: Pool returned 1.1.1.1
*Mar 1 01:22:43.215: As1 IPCP: O CONFREQ [ACKrcvd] id 5 len 28
*Mar 1 01:22:43.219: As1 IPCP: CompressType VJ 15 slots
CompressSlotID (0x0206002D0F01)
*Mar 1 01:22:43.223: As1 IPCP: PrimaryWINS 0.0.0.0 (0x820600000000)
*Mar 1 01:22:43.227: As1 IPCP: SecondaryDNS 0.0.0.0 (0x830600000000)
*Mar 1 01:22:43.231: As1 IPCP: SecondaryWINS 0.0.0.0 (0x840600000000)
*Mar 1 01:22:43.339: As1 IPCP: I CONFREQ [ACKrcvd] id 6 len 16
*Mar 1 01:22:43.343: As1 IPCP: Address 0.0.0.0 (0x030600000000)
*Mar 1 01:22:43.347: As1 IPCP: PrimaryDNS 0.0.0.0 (0x810600000000)
*Mar 1 01:22:43.351: As1 AAA/AUTHOR/IPCP: Start. Her address 0.0.0.0,
we want 1.1.1.1
*Mar 1 01:22:43.355: As1 AAA/AUTHOR/IPCP: Processing AV service=ppp
*Mar 1 01:22:43.355: As1 AAA/AUTHOR/IPCP: Processing AV protocol=ip
!--- The NAS applies the route statements and ACLs. !--- *Mar 1 01:22:43.359: As1 AAA/AUTHOR/IPCP:
Processing AV route#1=
9.9.9.9 255.255.255.255 11.11.11.12
*Mar 1 01:22:43.363: As1 AAA/AUTHOR/IPCP: Processing AV route#2=
15.15.15.15 255.255.255.255 12.12.12.13
*Mar 1 01:22:43.363: As1 AAA/AUTHOR/IPCP: Processing AV route#3=
15.15.15.16 255.255.255.255 12.12.12.13
*Mar 1 01:22:43.367: As1 AAA/AUTHOR/IPCP: Processing AV inacl#1=
permit icmp 1.1.1.0 0.0.0.255 9.9.9.0 0.0.0.255
```

```
*Mar 1 01:22:43.371: As1 AAA/AUTHOR/IPCP: Processing AV inacl#2=
permit tcp 1.1.1.0 0.0.0.255 15.15.15.0 0.0.0.255
*Mar 1 01:22:43.375: As1 AAA/AUTHOR/IPCP: Authorization succeeded
*Mar 1 01:22:43.375: As1 AAA/AUTHOR/IPCP: Done. Her address 0.0.0.0,
we want 1.1.1.1
*Mar 1 01:22:43.383: As1 IPCP: O CONFNAK [ACKrcvd] id 6 len 16
*Mar 1 01:22:43.387: As1 IPCP: Address 1.1.1.1 (0x030601010101)
*Mar 1 01:22:43.391: As1 IPCP: PrimaryDNS 172.18.125.3 (0x8106AC127D03)
*Mar 1 01:22:43.499: As1 IPCP: I CONFREQ [ACKrcvd] id 7 len 16
*Mar 1 01:22:43.503: As1 IPCP: Address 1.1.1.1 (0x030601010101)
*Mar 1 01:22:43.507: As1 IPCP: PrimaryDNS 172.18.125.3 (0x8106AC127D03)
*Mar 1 01:22:43.511: As1 AAA/AUTHOR/IPCP: Start. Her address 1.1.1.1,
we want 1.1.1.1
*Mar 1 01:22:43.519: As1 AAA/AUTHOR/IPCP (2646570182): Port='Async1'
list='' service=NET
*Mar 1 01:22:43.519: AAA/AUTHOR/IPCP: As1 (2646570182) user='chaprtr'
*Mar 1 01:22:43.523: As1 AAA/AUTHOR/IPCP (2646570182): send AV service=ppp
*Mar 1 01:22:43.523: As1 AAA/AUTHOR/IPCP (2646570182): send AV protocol=ip
*Mar 1 01:22:43.527: As1 AAA/AUTHOR/IPCP (2646570182): send AV addr*1.1.1.1
*Mar 1 01:22:43.531: As1 AAA/AUTHOR/IPCP (2646570182): found list "default"
*Mar 1 01:22:43.535: As1 AAA/AUTHOR/IPCP (2646570182): Method=tacacs+ (tacacs+)
*Mar 1 01:22:43.539: AAA/AUTHOR/TAC+: (2646570182): user=chaprtr
*Mar 1 01:22:43.539: AAA/AUTHOR/TAC+: (2646570182): send AV service=ppp
*Mar 1 01:22:43.543: AAA/AUTHOR/TAC+: (2646570182): send AV protocol=ip
*Mar 1 01:22:43.543: AAA/AUTHOR/TAC+: (2646570182): send AV addr*1.1.1.1
*Mar 1 01:22:43.547: TAC+: using previously set server 172.18.124.111 from
group tacacs+
*Mar 1 01:22:43.551: TAC+: Opening TCP/IP to 172.18.124.111/49 timeout=5
*Mar 1 01:22:43.563: TAC+: Opened TCP/IP handle 0x4EE23C to 172.18.124.111/49
*Mar 1 01:22:43.567: TAC+: Opened 172.18.124.111 index=1
*Mar 1 01:22:43.575: TAC+: 172.18.124.111 (2646570182) AUTHOR/START queued
*Mar 1 01:22:43.875: TAC+: (2646570182) AUTHOR/START processed
*Mar 1 01:22:43.887: TAC+: (2646570182): received author response
status = PASS_REPL
*Mar 1 01:22:43.891: TAC+: Closing TCP/IP 0x4EE23C connection to
172.18.124.111/49
*Mar 1 01:22:43.899: As1 AAA/AUTHOR (2646570182): Post authorization
status = PASS_REPL
*Mar 1 01:22:43.911: As1 AAA/AUTHOR/IPCP: Reject 1.1.1.1, using 1.1.1.1
*Mar 1 01:22:43.915: As1 AAA/AUTHOR/IPCP: Processing AV service=ppp
*Mar 1 01:22:43.919: As1 AAA/AUTHOR/IPCP: Processing AV protocol=ip
*Mar 1 01:22:43.923: As1 AAA/AUTHOR/IPCP: Processing AV route#1=
9.9.9.9 255.255.255.255 11.11.11.12
*Mar 1 01:22:43.923: As1 AAA/AUTHOR/IPCP: Processing AV route#2=
15.15.15.15 255.255.255.255 12.12.12.13
*Mar 1 01:22:43.927: As1 AAA/AUTHOR/IPCP: Processing AV route#3=
15.15.15.16 255.255.255.255 12.12.12.13
*Mar 1 01:22:43.931: As1 AAA/AUTHOR/IPCP: Processing AV inacl#1=
permit icmp 1.1.1.0 0.0.0.255 9.9.9.0 0.0.0.255
*Mar 1 01:22:43.935: As1 AAA/AUTHOR/IPCP: Processing AV inacl#2=
permit tcp 1.1.1.0 0.0.0.255 15.15.15.0 0.0.0.255
*Mar 1 01:22:43.939: As1 AAA/AUTHOR/IPCP: Processing AV addr*1.1.1.1
*Mar 1 01:22:43.939: As1 AAA/AUTHOR/IPCP: Authorization succeeded
*Mar 1 01:22:43.943: As1 AAA/AUTHOR/IPCP: Done. Her address 1.1.1.1,
we want 1.1.1.1
*Mar 1 01:22:43.947: As1 IPCP: O CONFACK [ACKrcvd] id 7 len 16
*Mar 1 01:22:43.951: As1 IPCP: Address 1.1.1.1 (0x030601010101)
*Mar 1 01:22:43.955: As1 IPCP: PrimaryDNS 172.18.125.3
(0x8106AC127D03)
*Mar 1 01:22:43.959: As1 IPCP: State is Open
*Mar 1 01:22:44.483: As1 IPCP: Install route to 1.1.1.1
koala#
koala#
```

## Verificación

Actualmente, no hay un procedimiento de verificación disponible para esta configuración.

## Troubleshoot

En esta sección encontrará información que puede utilizar para solucionar problemas de configuración.

### Comandos para resolución de problemas

[La herramienta Output Interpreter Tool \(clientes registrados solamente\) \(OIT\) soporta ciertos comandos show.](#) Utilice la OIT para ver un análisis del resultado del comando show.

**Nota:** Consulte [Información Importante sobre Comandos Debug](#) antes de utilizar los comandos debug.

- **debug aaa authentication** — Muestra información sobre autenticación de AAA/TACACS+.
- **debug aaa authorization**—Muestra información sobre la autorización AAA/TACACS+.
- **debug aaa per-user:** muestra información sobre los ajustes de configuración por usuario en el router o los servidores de acceso que se envían desde un servidor AAA.
- **debug tacacs+**—Muestra información detallada de depuración asociada con TACACS+.
- **debug ppp negotiation** — Muestra los paquetes PPP transmitidos durante el inicio PPP, durante el cual se negocian las opciones PPP.

Consulte [Listas de Acceso de Troubleshooting en Interfaces de Mercado](#) para obtener información sobre la resolución de problemas.

## Información Relacionada

- [Cisco Secure Access Control Server para Unix](#)
- [Cisco Secure Access Control Server para Windows](#)