



## Cisco Spaces Dashboard

---

- [Cisco Spaces Navigation, on page 1](#)
- [Cisco Spaces Dashboard, on page 1](#)
- [Cisco Spaces Features, on page 4](#)
- [User Profile, on page 7](#)
- [Viewing Cisco Spaces Account Details, on page 8](#)
- [Cisco Smart License, on page 9](#)

## Cisco Spaces Navigation

When you login to Cisco Spaces dashboard, the Cisco Spaces apps are displayed on the Cisco Spaces Home page. The apps are displayed under the license type for which they are available. You can access other features of Cisco Spaces such as **Location Hierarchy**, **Monitor**, **Admin Management**, and **Setup** using the three-line menu icon displayed at the top-left of the Dashboard. You can navigate to the Home page by clicking **Cisco Spaces** displayed at the top-left of the dashboard or using the **Home** option the three-line menu.

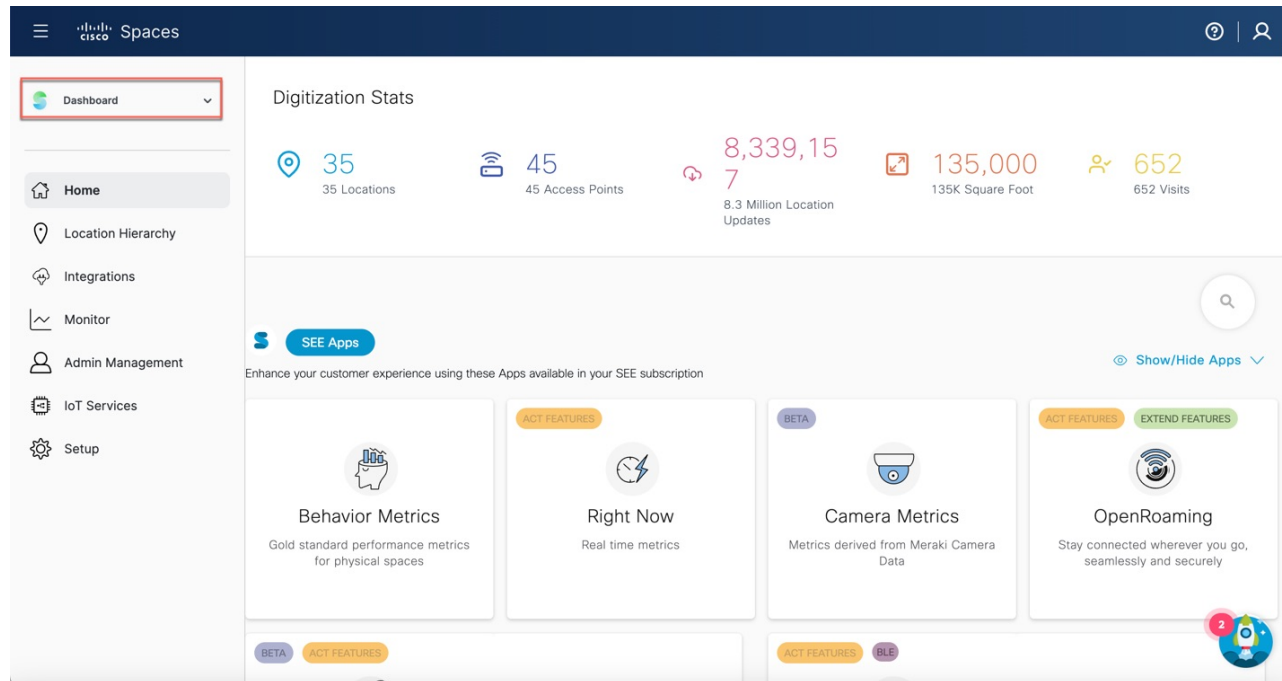
An app launcher (Grid) icon appears at the top-right of the dashboard using which you can easily navigate from one app to another app. When you click the app launcher icon, it lists all the Cisco Spaces apps activated for the user. From an app you can navigate to the home page by clicking **Cisco Spaces** displayed at the top-left of the dashboard.

## Cisco Spaces Dashboard

Cisco Spaces dashboard is the default home page of Cisco Spaces application. The Cisco Spaces GUI adopts the Magnetic design implementation. Magnetic design follows a persistent header and collapsible left navigation pane.

After you log in to Cisco Spaces, the **Home** window is displayed as shown in the following image:

Figure 1: Cisco Spaces Home




The Cisco Spaces **Home** window includes the **Dashboard** drop-down list (in the left navigation pane) which allows you to search and view the available apps associated with your Cisco Spaces license.

Use the **Dashboard** drop-down list to choose and navigate to any selected app. To navigate back to the Cisco Spaces **Home** window, choose **Dashboard** option from the drop-down list.

The dashboard has the following main areas: Menu Bar, Information icon, Profile icon, Digitization Stats and various applications available as per your subscription.



### Menu Bar

Click the **Menu** icon () at the left of the menu bar to access the following menu items:

- App Search - **Dashboard** drop-down list
- Location Hierarchy
- Integrations
- Monitor
- Admin Management
- IoT Services
- Setup

### Icons

Click the icons at the right of the menu bar to perform common tasks:

Icon	Description
	Support: Displays help center, support and documentation links.
	User Profile: Displays account, smart licenses and logout options. The license information is available under <b>My Account &gt; License Information &gt; License Units Consumed</b> .  For more information, see <a href="#">User Profile, on page 7</a> .

### Apps Search

This app search option is available in the left navigation pane in the **Dashboard** drop-down list. The **Dashboard** drop-down list displays all the applications that are available in your Cisco Spaces subscription.

### Digitization Stats

The Cisco Spaces dashboard displays the cumulative statistics values for locations, APs, location updates from your network and location visits.

The information in the **Digitization Stats** section displays as a single row.


### Cisco Spaces: Connector 3.0

Cisco Spaces: Connector (referred to as Connector in all subsequent references in this document) is a fully redesigned version of the Connector with the capability to efficiently manage multiple services that connect to different network devices such as Cisco Wireless controller and switches for data. The Connector platform makes it easy to add/remove new services from the cloud. It enables enhanced troubleshooting with debugging, log upload, and restart functionalities from the cloud. Connector also provides detailed metrics for each service with CPU, Memory, Connectivity and Up/Down status.

Connector is the next generation connector of Cisco Spaces that provides an enhanced user experience, architecture to support multiple services, simplicity, modularity, seamless upgrade and High Availability. Connector supports an active-active High Availability setup. Unlike the earlier releases of Connector 2.x, you can specifically configure and monitor the High Availability pair. All services and device configurations are managed at the Connector level to make it easy to pair with High Availability.

The Connector and device status is also aggregated at the Connector level from each instance for easy monitoring. Connector provides full visibility to each instance of a High Availability pair. You can view how the services are running on each instance, their upgrade status and so on. You can also perform actions on a particular instance, such as restarting of services.

### OpenRoaming SDK Profile

Cisco Spaces now supports configuration of OpenRoaming Wi-Fi profile using the **Menu** () **Integrations > Cisco Spaces SDK > Configure Profile** window. You can create a customer specific profile for a particular tenant based on the values you provide in the **Configure Profile** window.

Prior to this enhancement, the profile used to be updated manually in the backend.

# Cisco Spaces Features

The major features of Cisco Spaces dashboard includes:

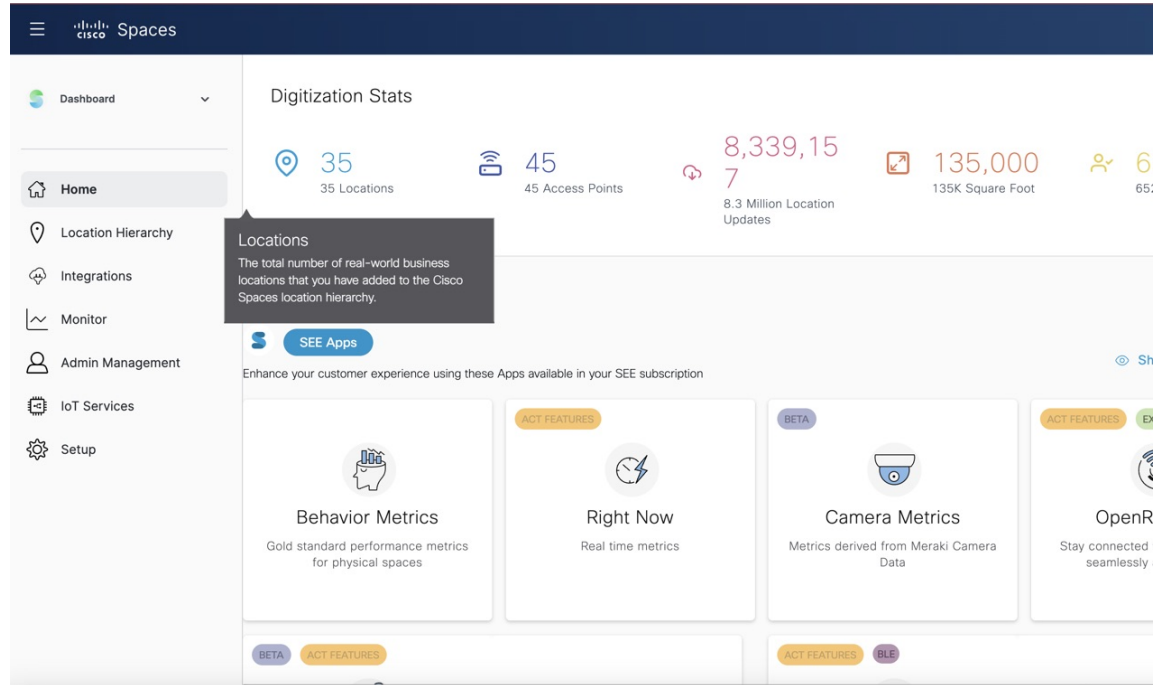
## Digitization Stats

In the Cisco Spaces dashboard, the **Digitization Stats** area displays the following cumulative statistics values. You can view the **Digitization Stats** as a single row.

- **Locations:** The total network locations configured in Cisco Spaces for various wireless networks.
- **Access Points:** The total number of APs added to Cisco Spaces
- **Location Updates:** The total number of location updates received from the wireless networks from the date of deployment of Cisco Spaces.
- **Square Foot:** The total area configured for network locations in the **Location Info** option in Location Hierarchy . However, if total area is not configured for network locations in the Location Hierarchy, then the Square Foot value will be displayed based on number of APs.
- **Visits:** The total number of visits (including repeated visits of unique visitors) that occurred in your business locations from the date of deployment of Cisco Spaces.

**Note**

- If a location is removed from the location hierarchy, the corresponding **Location Updates** and the **Visits** counter values are still retained in the **Digitization Stats** area.
- You can now click or hover your cursor on any counter to view the tooltip with the corresponding information.
- If data is not available for the counters, the tooltip displays a warning message as shown in the following image:



## Overview of Cisco Spaces Apps

In the Cisco Spaces Home page, you can view all available applications. Use the **Dashboard** drop-down list to search apps.

The apps available in Cisco Spaces are tied to various **Cisco Spaces License Packages**. In the Cisco Spaces home page, you can view the app tiles segregated according to your Cisco Spaces account license.

The following apps are available under **EXTEND** license:

- Behavior Metrics
- Right Now
- Camera Metrics
- OpenRoaming
- Location Analytics
- Detect and Locate

- Impact Analysis
- IoT Device Marketplace

The following apps are available under **ACT** license:

- Proximity Reporting
- Space Manager
- Space Experience

The following apps available under **SMART OPERATIONS** license:

- Asset Locator
- IoT Explorer

The following apps are available under **SMART VENUES** license.




---

**Note** For a Cisco Spaces account tied to **SMART VENUES** license, all apps under **EXTEND** license is available.

---

- Captive Portals
- Engagements
- Location Personas

## Location Hierarchy

The Location Hierarchy feature enables you to define your business locations in Cisco Spaces. You can import the locations in the same structure in which they are defined in your wireless network. The apps such as **Engagements**, **Captive Portals**, and **Location Personas Rules** depend on the location hierarchy defined. Cisco Spaces provides universal account, and you can add the locations of multiple wireless networks to the location hierarchy.

The APs that you can add to the location hierarchy depends on the type of Cisco Spaces license you own.

For more information, see “Location Hierarchy in Cisco DNA Spaces”.

## Monitor

The Monitor section enables you to monitor the performance status of Cisco Spaces, and its apps. It also displays the app latencies and anomalies. For more information, see the “Monitoring” section.

## Admin Management

The **Admin Management** feature enables you to create Cisco Spaces users. You can restrict the privileges for each user based on their role. For more information, see the “Managing Cisco DNA Spaces Users and Accounts” section.

# Setup

## Wireless Networks and Camera

### Wireless Network

Displays features and instructions to connect Cisco Spaces to a particular wireless network through various methods. For more information, see [Setting Up Cisco Spaces to Work with Various Wireless Networks](#).

### Camera

Displays features and instructions to configure Cisco Meraki Camera to work with Cisco Spaces.

## Map Service

Map Service enables you to upload the map of locations for Cisco CMX tethering.

## Wireless Network Status

The **Wireless Network Status** option enables you to view the synchronization status of your wireless network. You can view the time at which the last synchronization happened.

## User Profile


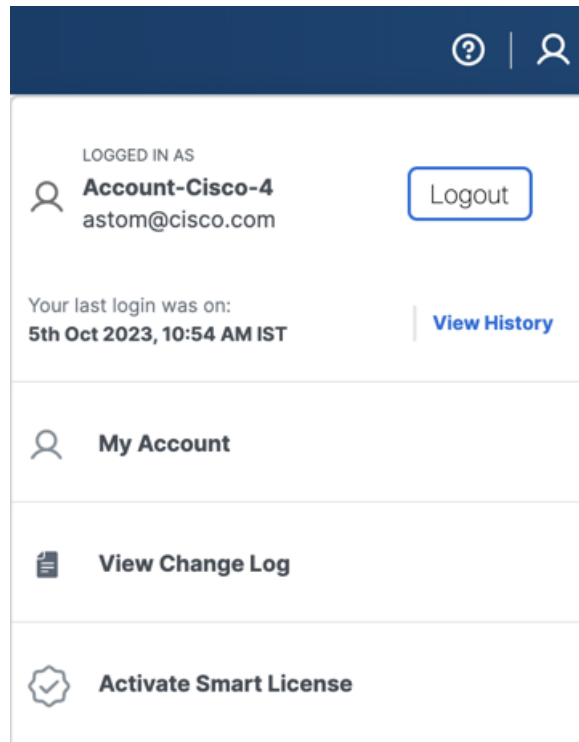
The **User Profile** option () in the top-left of the Cisco Spaces dashboard helps to view account, smart licenses and logout options.

Figure 2: User Profile



You can view the last login and timestamp details. Click **View History** to the recent and failed login attempts.

The **User Profile** feature includes the following options:

- **My Account:** Click to display the **My Account** window. For more information, see [Viewing Cisco Spaces Account Details, on page 8](#).
- **View Change Log:** Click to open the **Change Log** tab that displays the activity details of all the users in a particular account. For more information, see [Viewing Cisco Spaces Account Details, on page 8](#).
- **Activate Smart License:** Click to activate Smart License. For more information, see [Activate Smart License, on page 9](#).

## Viewing Cisco Spaces Account Details

Use the **My Account** window to view the Cisco Spaces profile details, account activity, and other account related information. The **My Account** window has the following tabs:

- **My Profile:** Displays the basic profile information such as first name, last name, email and mobile number.
- **Account Activity:** Displays the failed attempt account activity details such as IP address, date and browser in which the account activity failed.
- **License Information:** Displays the Cisco Spaces account information, access points limit and Smart Software License details. Click **Link your Smart Account** to activate Cisco Smart License.



- **Preferences:** This tab includes the following options:
  - **Add new domain:** Click to add a new domain for SSO authentication.
  - **Enable Support Access:** Click this option to enable or disable access to their account to the Cisco Spaces support team. Enabling this option helps the Cisco Spaces support team to detect and debug issues under exceptional situations.

**Note**

- By default, the **Enable Support Access** option is enabled.
- When access is enabled, the Cisco Spaces support team gets access to the customer's Cisco Spaces account.

- **Change Log:** Displays the change log details such as user activity, time, app, section and user. Click the **Filter** option to filter log details.

## Cisco Smart License

Cisco Smart License is a flexible licensing model that streamlines the way you activate and manage software. The solution allows you to easily track the status of your license and software usage trends.

Smart License support in Cisco Spaces allows you to view and manage Cisco Spaces software license for your Cisco Smart Account. To enable Cisco Smart License in Cisco Spaces, you must have a smart account that is configured with Cisco Smart Software Manager (CSSM). In the Cisco Spaces dashboard, choose **Profile Icon** > **Activate Smart License** to activate Cisco Smart License.


You can also activate Cisco Smart License from **My Accounts** > **License Information** tab.

**Note**

To enable smart licenses in Cisco Spaces, you must have a smart account configured with Cisco. For more information about Cisco Smart License, see [Smart Software Licensing](#).

## Activate Smart License

### Procedure

- Step 1** Log in to [Cisco Spaces](#).
- Step 2** In the Cisco Spaces dashboard, choose **Profile Icon** () > **Activate Smart License**. The **Terms and Conditions** window is displayed.
- Step 3** Read the terms and condition statements and click **Accept Terms and Conditions**. The **Smart License Configuration** window is displayed.

**Step 4** Click the **Yes, I have** radio button if you already have an account in the Cisco Smart Software Manager (CSSM).  
If you do not have an account in the CSSM, click the **No, I don't have** radio button and proceed to view the instructions to create an account in CSSM.

**Step 5** Click **Next**.

**Step 6** Follow the on-screen instructions to create a token in the CSSM tool.

**Note** Ensure that you copy the generated token to use the same in step 7.

**Step 7** Click **Next** after you have generated the token.

**Step 8** In the **Product Instance Token** field, paste the generated token.

**Step 9** Click **Register** to register Cisco Spaces with your CSSM account.

A success notification message is displayed. You can view the Smart License Software registration details and license compliance information in the **My Accounts** window under **License Information** tab.

- Note**
- After the Cisco Smart License activation, you can contact the Cisco Spaces support team to enable the trial support. If trial mode is enabled, the smart agent will not update the license usage to Cisco Smart License Management.
  - After you activate your Cisco Smart License, you can upgrade or downgrade the Cisco Spaces license. To do this, choose **Profile Icon** > **License Info** > **Select License Level**. For more information, see [Update License Information, on page 10](#).

## Update License Information


Use the **License Information** tab in the **My Accounts** window to manage your Cisco Spaces licenses. The following licenses are available:

- **Cisco Spaces See**
- **Cisco Spaces Act**
- **Cisco Spaces Extend**
- **SMART OPERATIONS**
- **SMART VENUES**
- **SPACES UNLIMITED**

You can renew authorization and registration, re-register and de-register Cisco Spaces smart licenses.

### Procedure

**Step 1** Log in to [Cisco Spaces](#).

**Step 2** In the Cisco Spaces dashboard, choose **Profile Icon** () > **My Account**.

The **My Account** window is displayed.

**Step 3** Click the **License Information** tab.

The **LICENSE USAGE** area displays the Cisco Spaces license details and compliance status.

**Figure 3: License Usage**

The screenshot shows the Cisco Spaces dashboard with the 'License Information' tab selected. The user profile is '13may\_cicd'. The 'License Information' section shows the current license is 'ACT' (Change). Below this is the 'LICENSE USAGE' table:

License	Access Points	Webex Devices	Meraki Camera	Locations	Building Units	Compliance Status
ACT	5	0	15	42	0	OutOfCompliance

Below the table, there is a section for 'SMART SOFTWARE LICENSE' and 'SMART LICENSE STATUS'. The status is 'Registered' with an expiration date of '07-Jul-2023'. A warning message indicates 'License Compliance: Out of Compliance'.

**Step 4** To upgrade or downgrade the license, click **Change**.

The **Select License Level** window is displayed. Your current plan is indicated by a green tick mark. The upgrade or downgrade possibilities are also indicated in the **Select License Level** window.

The 'Select License Level' window shows the following options:

- EXTEND**: View and understand realtime and historical behavior of people & assets in your properties through our analytics apps suite.
- UNLIMITED**: This plan will convert your devices to SQFT metering. Our top tier Package that includes everything in Spaces from all license types including our Smart workspaces offering.
- SMART\_VENUES**: View and understand realtime and historical behavior of people & assets in your properties through our analytics apps suite.
- SMART\_OPERATIONS**: View and understand realtime and historical behavior of people & assets in your properties through our analytics apps suite.

- Select the plan you would like to upgrade or downgrade.  
A warning message is displayed with license upgrade or downgrade information.
- Check the **I accept the terms and conditions** checkbox to proceed.
- Click **Change Plan**.  
A success notification message is displayed.
- To view the latest license details, click **Login** and log in to Cisco Spaces.

**Step 5** In the **Smart License Status** area, the following information is displayed:

**Figure 4: Smart Software**

**SMART SOFTWARE LICENSE**  
To view and manage Cisco Spaces software license for your Cisco Smart Account, go to Smart Software Manager

**SMART LICENSE STATUS** Actions

Registration Status Registered  
07-Jul-2023

License Compliance Out of Compliance

**ACCOUNT DETAILS**

Smart Account Name  
Virtual Account  
Product Instance Name

**ACCESS POINT INFORMATION** Last updated: 0 mins ago Refresh

Active APs  
44

Smart License Usage

License (version)	Description	Count	Status	Expiry Date
Cisco Spaces ACT Cloud (1.0)	Cisco Spaces ACT Cloud	44	Out of Compliance	04-Dec-2023

**License**

- **Registration Status:** Displays the Cisco Spaces smart license registered status.
- **License Compliance:** Displays the Cisco Spaces smart license compliance details. The compliance statuses available are: **Init** (Initiated), **In Compliance** and **Out of Compliance**.

**Note** If the status indicates **Out of Compliance**, you cannot access the Cisco Spaces dashboard once the Smart Account licenses expire. However, Cisco Spaces will still allow access to the Cisco Spaces dashboard if the number of access points exceeds the license limit or the account is in an **Out of Compliance** status.

**Step 6** Click **Actions** drop-down list to view the following options:

- **Renew Authorization:** Click to renew Cisco Spaces smart license authorization.

**Note**

- This action is optional as renew authorization is performed automatically when Cisco Spaces communicates with CSSM. Alternatively, Smart License agent performs renew authorization automatically after every 30 days from backend.
- We recommend that you perform this action if you want to troubleshoot or renew authorization manually if status is **Out of Compliance**. You also can renew authorization manually to reflect any recent Smart Account updates to reflect in Cisco Spaces.

- **Renew Registration:** Click to renew Cisco Spaces smart license registration.

**Note**

- This action is optional as renew registration is performed by Cisco Spaces automatically in backend at the time of registration.
- This action renews the Registration ID and Certificate with CSSM. Cisco Spaces performs this action automatically every 6 months from backend.

- **Re-register:** Click to re-register Cisco Spaces smart license in the CSSM.

- Note**
- This action forcefully re-registers Smart License and overrides any existing registered instance. This action results in reported data loss of that particular instance in Smart Account.
  - We recommend that you perform this action to troubleshoot Smart License.
- **De-register:** Click to de-register Cisco Spaces smart license in the CSSM.
- Note** We recommend that you perform this action if Cisco Spaces is not in use and you want to deregister the instance from CSSM.

- Step 7** In the **Account Details** area, the following information is displayed:
- **Smart Account Name:** Displays the Cisco Spaces smart license account name.
  - **Virtual Account:** Displays the Cisco Spaces virtual account name.
  - **Product Instance Name:** Displays the Cisco Spaces product instance name.

- Step 8** In the **Access Point Information** area, the following information is displayed:
- **Active APs:** Displays the number of active access points.

- Step 9** In the **Smart License Usage** area, the following information is displayed:
- **License:** Displays the license version.
  - **Description:** Displays the license description.
  - **Count:** Displays the number of active access points.
  - **Status:** Displays the license status.
  - **Expiry Date:** Displays the expiry date of the smart license.
-

