



Client Data Tunneling

- [Ethernet over GRE Tunnels, on page 1](#)
- [Proxy Mobile IPv6, on page 9](#)

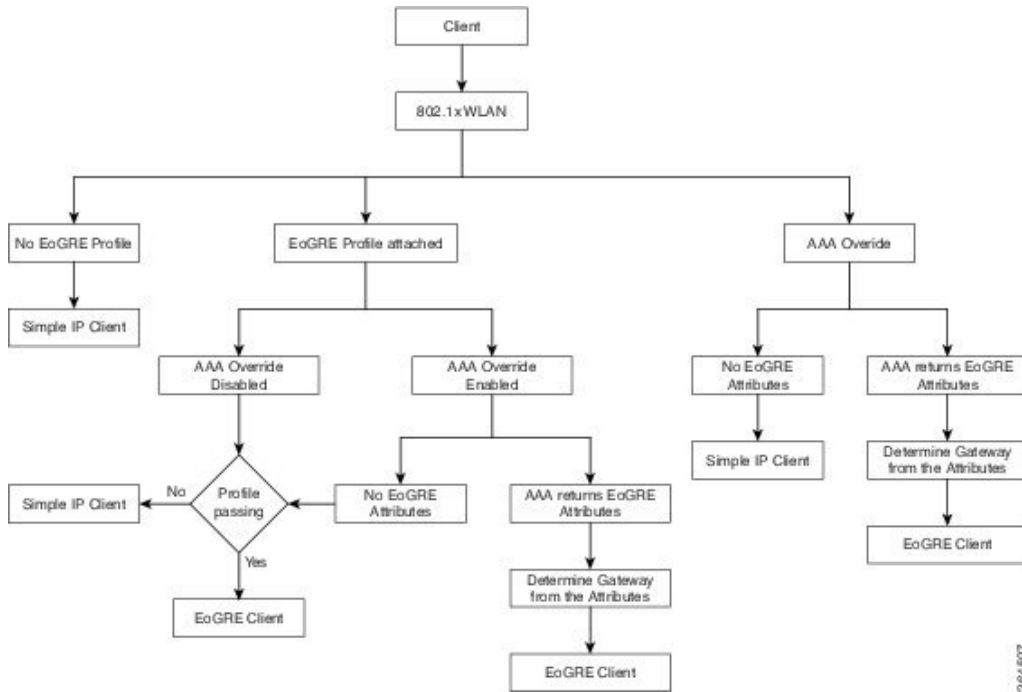
Ethernet over GRE Tunnels

Ethernet over GRE (EoGRE) is an aggregation solution for aggregating Wi-Fi traffic from hotspots. This solution enables customer premises equipment (CPE) devices to bridge the Ethernet traffic coming from an end host, and encapsulate the traffic in Ethernet packets over an IP GRE tunnel. When the IP GRE tunnels are terminated on a service provider broadband network gateway, the end host's traffic is terminated and subscriber sessions are initiated for the end host.

For more information about designing and deploying EoGRE on controller and Cisco FlexConnect APs, see the [EoGRE Deployment Guide](#).

EoGRE on 802.1X Authentication-based WLANs

Figure 1: Workflow of EoGRE on 802.1X Authentication-based WLANs



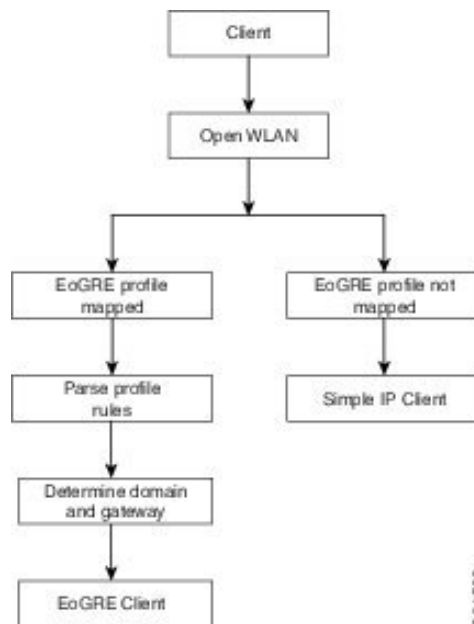
364-697

802.1X Authentication	Switching	AP Mode	EoGRE	SimpleIP
Central+No FlexConnect Backup RADIUS Server	Local	Connected	Clients can join as EoGRE.	Clients can join as SimpleIP.
Central+No FlexConnect Backup RADIUS Server	Local	Standalone	New clients cannot join; existing clients should work.	New clients cannot join; Existing clients should work.
Central+No FlexConnect Backup RADIUS Server	Local	Boot in standalone	Clients cannot join.	Clients cannot join.
Local AP Auth+No FlexConnect Backup RADIUS Server	Local	Connected	Clients become SimpleIP.	Clients join as SimpleIP.
Local AP Auth+No FlexConnect Backup RADIUS Server	Local	Standalone	Clients become SimpleIP.	Existing and new clients work as expected.
Local AP Auth+No FlexConnect Backup RADIUS Server	Local	Boot in standalone	Clients become SimpleIP.	Clients can join.

802.1X Authentication	Switching	AP Mode	EoGRE	SimpleIP
Central+FlexConnect Backup RADIUS Server	Local	Connected	Clients join as EoGRE.	Existing and new clients work as expected.
Central+FlexConnect Backup RADIUS Server	Local	Standalone	Existing clients continue as EoGRE; new Client joins as SimpleIP.	Existing and new clients work as expected.
Central+FlexConnect Backup RADIUS Server	Local	Boot in standalone	Clients become SimpleIP.	Existing and new clients work as expected.

EoGRE on Open Authentication-based WLANs

Figure 2: Workflow of EoGRE on Open Authentication-based WLANs



Note For open WLANs, the EoGRE profile must have only one rule, which is a * rule. Mapping of a profile that has multiple rules to an open authentication WLAN is not supported. All clients should be EoGRE clients.

Open Authentication	Switching	AP Mode	EoGRE
Central	Local	Connected	Client will join as EoGRE.

Open Authentication	Switching	AP Mode	EoGRE
Central	Local	Standalone	New clients cannot join. Existing clients should work.
Central	Local	Boot in Standalone	Clients cannot join.

Related Documentation

- [Ethernet over GRE Tunnels](#)
- [Service Provider Wi-Fi: Support for Integrated Ethernet Over GRE](#)
- [Intelligent Wireless Access Gateway Configuration Guide](#)

Restrictions for EoGRE Tunneling

- EoGRE tunneling is not supported on Cisco 2504 WLC.
- On Cisco vWLC, EoGRE tunneling is supported only in local switching mode.
- EoGRE feature is not supported in Cisco Aironet 702, 801, 802, 1520 Access Points.
- It is not possible to edit or delete a tunnel profile if the profile is associated with a WLAN. You must first dissociate the profile from the WLAN and then edit or delete the profile.
- It is not possible to edit or delete a tunnel gateway if the gateway is already associated with a domain. You must first dissociate the tunnel gateway from the domain and then edit or delete the tunnel gateway.
- It is not possible to edit or delete a domain if the domain is already associated with a tunnel profile rule. You must first dissociate the domain from the tunnel profile rule and then edit or delete the domain.
- If the domain is modified on the fly, the client associated with the domain is deauthenticated.
- We recommend that you do not have firewall that could block ICMP packets.
- Tunnel Gateway (TGW) as AAA and RADIUS realm feature on WLAN should not be used together.
- Tunnel Gateway (TGW) as AAA is not supported on EoGRE for FlexConnect APs.
- Due to SNMP limitation, tunnel gateway names can be up to 127 characters only.
- For open WLANs, the profile must have only one rule, which is a * rule. Mapping of a profile that has multiple rules to an open authentication WLAN is not supported.
- EoGRE client gets IPV6 address from local switching VLAN.
- Broadcast/Multicast traffic on Local Switching VLAN reaches EoGRE clients.
- FlexConnect+Bridge Mode is not supported.
- Standalone mode: EoGRE client Fast Roaming is not supported.
- WebAuth is not supported.
- FlexConnect AP Local Authentication is not supported.

- FlexConnect AP Backup RADIUS server is not supported.
- EoGRE client with Static IP is not supported.
- FlexConnect ACL on the WLAN does not work for EoGRE clients.
- After Fault Tolerance, client type is SimpleIP. It is changed to EoGRE after a period of 30 seconds.
- Path MTU discovery is not supported by FlexConnect AP. MTU of AP gateway should be 1500 bytes.
-
- Clients connecting to Wave 2 APs get an IP address from the native VLAN in the conditions described in [CSCvu46349](#).

Configuring EoGRE on the Controller (GUI)

Procedure

- Step 1** Create tunnel gateways and configure heartbeats:
- Choose **Controller > Tunneling > EoGRE**.
 - Select the **Interface Name**.
Interface present on the controller to be used as a source of the tunnel.
 - Set the **Heartbeat Interval**. The default interval is 60 seconds.
The controller sends keepalive pings every 60 seconds.
 - Set **Max Heartbeat Skip Count**. The default value is set to 3.
If the TGW does not reply after three keepalive pings, the controller marks the TGW as nonoperational. The number of skip count decides how many times the TGW can skip consecutive replies, before the controller knows that the TGW is nonoperational.
 - Specify a **TGW Name**.
 - Specify the **TGW IP Address**.
Only IPv4 address format is supported. You can create up to 10 such tunnel gateways.
 - Specify a **Domain Name**.
 - Specify the tunnel gateway that you created, and click **Add**.
If the tunnel gateway is reachable, the state should be displayed as UP under the **TGW List**.
Domain represents a virtual collection of one or more tunnels used for redundancy purposes. Up to 16 tunnels can exist in a domain. If one tunnel fails, the traffic is redirected to another TGW.
- Step 2** Create a tunnel profile:
- Choose **Controller > Tunneling > Profiles**.
 - Specify a profile name and click **Add**.
The profile name is displayed under **Profile List**.
- Step 3** Define a tunnel profile rule:

- a) Click the tunnel profile that you created.
- b) Under the **Rule** tab, to map a specific realm to the profile, enter the realm name. A realm is a string after @, for example, user_name@realm. To match any **Realm**, use *, which means all realms are accepted.
- c) Choose **Tunnel Type** as **EoGRE**.
- d) Set **VLAN** to **0**.
- e) Choose the **Gateway Domain** that you created in Step 1.
- f) Click **Add** to add the rule to the tunnel profile.

Step 4 Specify tunnel parameters:

- a) Under the **Tunnel Parameters** tab, check the **Gateway as AAA Proxy** and **Gateway as Accounting Proxy** (optional) check boxes to configure a tunnel gateway as a AAA proxy and as an Accounting proxy.
- b) (Optional) Check the **DHCP Option-82** check box.

Note DHCP Option 82 configuration is not supported on IPv6 clients.

- c) Choose the DHCP Option 82 format as either **Binary** or **ASCII**.
- d) Specify the **DHCP Option 82 Delimiter**. The default is ;.
- e) Specify the **Circuit-ID** and **Remote-ID** information. You can choose up to five fields each and sort them accordingly.
- f) Click **Apply**.

Step 5 Create RADIUS Authentication or Accounting servers or both by specifying the tunnel gateway IP addresses that you specified in Step 1 as the server IP addresses, and enable **Tunnel Proxy**.

For instructions on how to create RADIUS servers, see the *Configuring RADIUS* chapter under *Security Solutions*.

Step 6 Associate the tunnel profile to the WLAN:

- a) Choose **WLANs** and click the WLAN ID to which the tunnel profile has to be associated.
- b) In the **Advanced** tab, under **Tunneling**, choose the **Tunnel Profile**.
- c) (Optional) You can choose to enable AAA Override for the WLAN, which means that the controller is allowed to accept the attributes returned by the RADIUS server.
- d) Save the configuration.

Step 7 Verify if the tunnel is correctly configured:

- a) Choose **Controller > Tunneling > Profiles**.
- b) Verify if the profile name is mapped to the correct WLAN.

Configuring EoGRE on the Controller (CLI)

Procedure

- Configure keepalive ping parameters by entering these commands:
 - **config tunnel eogre heart-beat interval** *seconds*
 - **config tunnel eogre heart-beat max-skip-count** *number*
- Add new EoGRE tunnel gateways, or delete or modify existing gateways, by entering these commands:

- **config tunnel eogre gateway add** *name ipv4-address ip-addr*
 - **config tunnel eogre gateway delete** *name*
 - **config tunnel eogre gateway modify** *name ipv4-address ip-addr*
 - Configure EoGRE tunnel gateway domain by entering these commands:
 - **config tunnel eogre domain** {**create** | **delete**} *domain-name*
 - **config tunnel eogre domain** {**add** | **remove**} *domain-name gateway-name*
 - Configure tunnel profiles by entering these commands:
 - **config tunnel eogre profile** {**create** | **copy** | **delete** | **rule** | **eogre**}
- Follow the instructions displayed in the CLI to configure each parameter.
- Configure the gateway as AAA proxy by entering these commands:
 - **config tunnel profile eogre** *profile-name gateway-radius-proxy* {**enable** | **disable**}
 - **config tunnel profile eogre** *profile-name gateway-radius-proxy accounting* {**enable** | **disable**}
 - Configure DHCP Option 82 for the tunnel profile by entering these commands:



Note DHCP Option 82 configuration is not supported on IPv6 clients.

- **config tunnel profile eogre** *profile-name DHCP-Opt-82* {**enable** | **disable**}
- **config tunnel profile eogre** *profile-name DHCP-Opt-82 format* {**binary** | **ascii**}
- **config tunnel profile eogre** *profile-name DHCP-Opt-82 delimiter* *character*
- **config tunnel profile eogre** *profile-name DHCP-Opt-82* {**circuit-id** | **remote-id**} *supported-parameter*
- Configure EoGRE tunnel interface by entering the following command:
 - **config tunnel eogre interface** *interface-name*



Note Before configuring the interface for the tunnel source, disable the WLAN associated with the interface.

- View details about EoGRE tunneling by entering these commands:
 - **show tunnel eogre** {**domain** | **gateway**} **summary**



Note The **show tunnel eogre gateway summary** command lists details of only the FlexConnect central switching clients and Local Mode AP clients. To view the details of FlexConnect local switching clients, use the **show ap eogre gateway ap-name** command.

- **show tunnel eogre summary**
- **show tunnel eogre statistics**
- **show tunnel profile summary**
- **show tunnel profile detail** *profile-name*

Configuring EoGRE for FlexConnect APs (GUI)

- Ensure that the APs are in FlexConnect mode.
- The tunnel configurations made for the controller also applies to Cisco FlexConnect APs when the tunnel profile is associated with a WLAN.

Procedure

Step 1 Choose **WLANs > WLANs**.

Step 2 Click the WLAN ID.

Step 3 In the **Advanced** tab under **FlexConnect**, enable **FlexConnect Local Switching**.

Note Only FlexConnect Local Switching option has to be configured on the FlexConnect AP or FlexConnect Group to enable FlexConnect AP tunnel.

Step 4 Save the configuration.

Configuring EoGRE for FlexConnect APs (CLI)

- Ensure that the APs are in FlexConnect mode.
- The tunnel configurations made for Cisco WLC also applies to Cisco FlexConnect APs when the tunnel profile is associated with a WLAN.

Procedure

Step 1 Enable Local Switching on FlexConnect APs associated with a WLAN by entering this command:
config wlan flexconnect local-switching wlan-id enable

Step 2 Monitor the EoGRE configurations by entering this command:

show ap eogre {domain | gateway} *ap-name*

Note The **show ap eogre gateway** *ap-name* command lists details of FlexConnect local switching clients. To view the details of FlexConnect central switching clients and Local Mode AP clients, use the **show tunnel eogre gateway summary** command.

Proxy Mobile IPv6

Proxy Mobile IPv6 (PMIPv6) is a network-based mobility management protocol that supports a mobile node by acting as the proxy for the mobile node in an IP mobility-related signaling scenario. The mobility entities in the network track the movements of the mobile node, initiate mobility signaling, and set up the required routing state.

The main functional entities are the Local Mobility Anchor (LMA) and Mobile Access Gateway (MAG). The LMA maintains the reachability state of the mobile node and is the topological anchor point for the IP address of the mobile node. The MAG performs mobility management on behalf of a mobile node. The MAG resides on the access link where the mobile node is anchored. The Cisco Wireless LAN Controller (WLC) implements the MAG functionality.

In the Cisco 5508 WLC, Cisco WiSM2, and Cisco 8510 WLCs, PMIPv6 MAG support for integration with LMA such as Cisco ASR 5000 Series in cellular data networks.

For PMIPv6 clients, Cisco WLC supports both central web authentication and local web authentication.

PMIPv6 is supported for clients with 802.1X authentication. After the 802.1X authentication is complete, a Cisco AP starts PMIPv6 signaling for the corresponding client.

MAG on AP is supported on FlexConnect mode APs in a locally switched WLAN. For PMIPv6 clients, all the data traffic from clients is tunneled to the LMA in the Generic Routing Encapsulation (GRE) tunnel established between the MAG and the LMA. Similarly, all the packets received from the LMA in the GRE tunnel are routed to the wireless client.

After the 802.1X authentication is complete, the Cisco AP starts PMIPv6 signaling for the client. In a MAG-on-AP scenario, the Cisco AP starts PMIPv6 signaling. In a MAG-on-WLC scenario, the Cisco WLC starts PMIPv6 signaling.

Fast Roaming with Central Association

Fast roaming is supported when central association is enabled on WLANs. When central association is enabled, all key cachings occur on the Cisco WLC. When a PMIPv6 client roams from one AP to another on the same mobility domain, the Cisco WLC sends the PMIPv6 parameters of the client to a new AP in PMIPv6 tunnel payload to start PMIPv6 signaling. Also, the Cisco WLC sends the PMIPv6 tunnel payload to the old AP to tear down the Generic Routing Encapsulation (GRE) tunnel for the client with the LMA. Fast roaming is supported in both intra-Cisco WLC and inter-Cisco WLC roaming scenarios and mobility messages are added to send PMIPv6 parameters from one Cisco WLC to another during roaming.

Client roaming from third-party MAG to Cisco AP-MAG is similar to a new client joining; a client roaming away from a Cisco AP-MAG to a third-party MAG is similar to a client leaving, and therefore, requires no special handling.

With Cisco APs in FlexConnect mode, all reassociation requests from clients are handled by the Cisco APs themselves. However, if central association is enabled, all reassociation requests are handled by the Cisco WLC.

Dynamic AAA Attributes

The dynamic AAA attributes that are supported are listed below:

Type	Attribute	Value	Description	Cisco WLC Behavior
89	Chargeable-User-Identity	String	Chargeable User Identity RFC-4372	If present, the attribute is copied into the MSCB and used in accounting reports; no other usage.
26/104 15/13	3GPP-Charging-Characteristics	String	Rules for producing charging information	If present, the attribute is copied to the MSCB and passed to the L2 attach triggers to the MAG. The attribute is used to send to the local mobility anchor (LMA) as an option in the proxy binding update (PBU).
26/9/1	Cisco-Service-Selection	String	Service Identifier (APN)	If present, the attribute overrides the locally configured APN.
26/9/1	Cisco-Mobile-Node-Identifier	String	Mobile Node Identifier	If present, the attribute is used for the network access identifier (NAI).
26/9/1	Cisco-MSISDN	String	Mobile Subscriber ISDN Number	If present, the attribute is used to pass to MAG code with a new parameter in the L2 attach trigger.
26/9/1	Cisco-MPC-Protocol-Interface	ENUM: "none" "PMIPv6" "GTPv1" "PMIPv4"	Mobile Node Service Type	Only IPv4 and simple IP clients are supported.
26/9/1	Cisco-URL-REDIRECT	String	HTTP URL of the Captive Portal	Existing attribute used for web authentication; no changes required.
26/9/1	Cisco-URL-REDIRECT-ACL	String	Specific Redirect Rule	Existing attribute used for web authentication; no changes required.
26/9/1	Cisco-Home-LMA-IPv4-Address	IP Address	Mobile node's Home LMA IPv4 address	If present, this attribute is used as the LMA for the client. Note The GRE tunnel creation is still static.

PMIPv6 AAA Attributes

The PMIPv6 AAA attributes that are supported are listed below:

Type	Attribute	Value	Description	Cisco WLC Behavior
89	Chargeable-User-Identity	String	Chargeable User Identity RFC-4372	If present, the attribute is copied into the MSCB and used in accounting reports; no other usage.
26/104 15/13	3GPP-Charging-Characteristics	String	Rules for producing charging information	If present, the attribute is copied to the MSCB and passed to the L2 attach triggers to the MAG. The attribute is used to send to the local mobility anchor (LMA) as an option in the proxy binding update (PBU).
26/9/1	mn-network	String	Service Identifier (APN)	If present, the attribute overrides the locally configured APN (Mandatory)
26/9/1	mn-nai	String	Mobile Node Identifier	If present, the attribute is used for the network access identifier (NAI).
26/9/1	cisco-msisdn	String	Mobile Subscriber ISDN Number	If present, the attribute is used to pass to MAG code with a new parameter in the L2 attach trigger.
26/9/1	cisco-mpc-protocol-interface	ENUM: "None" "PMIPv6"	Mobile Node Service Type	Only PMIPv6 clients are supported. (Mandatory)
26/9/1	home-lma-ipv4-address	IPv4 Address	Mobile node's Home LMA IPv4 address	If present, this attribute is used as the LMA for the client. The LMA should also be configured in WLC (Mandatory). Note The GRE tunnel creation is still static.
26/9/1	mn-service	ENUM: "IPv4"	Type of client	Only IPv4 is supported.

Restrictions on Proxy Mobile IPv6

- IPv6/dual stack clients are not supported. Only IPv4 is supported with PMIPv6.
- You must enable DHCP Proxy before you can connect to a PMIPv6-enabled WLAN.
- PMIPv6 is not supported on local switching WLANs with FlexConnect mode APs. PMIPv6 MAG on AP is supported only when AP is in FlexConnect mode and WLAN is configured for FlexConnect Local Switching. If the WLAN is configured for Central Switching, MAG on Cisco WLC is used.
- PMIPv6 on FlexConnect ACL with local switching is not supported.
- MAG on AP is not supported for clients in a centrally switched WLAN.

Configuring Proxy Mobile IPv6 (GUI)

Procedure

Step 1 Choose **Controller > PMIPv6 > General**. The **PMIPv6 General** window is displayed.

Step 2 Enter the values for the following parameters:

- **Domain Name**—Name of the PMIPv6 domain. The domain name can be up to 127 case-sensitive, alphanumeric characters.
- **MAG Name**—Name of the MAG.
- **MAG APN**—Access Point Name (APN) if you have subscribed to a MAG.

MAG can be configured for one of the following roles:

- **3gpp**—Specifies the role as 3GPP (Third Generation Partnership Project standard)
- **lte**—Specifies the role as Long Term Evolution (LTE) standard
- **wimax**—Specifies the role as WiMax
- **wlan**—Specifies the role as WLAN

By default, the MAG role is WLAN. However, for lightweight access points, the MAG role should be configured as 3GPP. If the MAG role is 3GPP, it is mandatory to specify an APN for the MAG.

- **Maximum Bindings Allowed**—Maximum number of binding updates that the Cisco WLC can send to the MAG. The valid range is between 0 and 40000.
- **Binding Lifetime**—Lifetime, in seconds, of the binding entries in the Cisco WLC. The valid range is between 10 and 65535. The default value is 3600. The binding lifetime should be a multiple of 4.
- **Binding Refresh Time**—Refresh time, in seconds, of the binding entries in the Cisco WLC. The valid range is between 4 and 65535 seconds. The default value is 300 seconds. The binding refresh time should be a multiple of 4.
- **Binding Initial Retry Timeout**—Initial timeout, in milliseconds, between the Proxy Binding Updates (PBUs) when the Cisco WLC does not receive the Proxy Binding Acknowledgments (PBAs). The valid range is between 100 and 65535. The default value is 1000.
- **Binding Maximum Retry Timeout**—Maximum timeout between the PBUs when the Cisco WLC does not receive the PBAs. The valid range is between 100 and 65535. The default value is 32000.
- **Replay Protection Timestamp**—Maximum amount of time, in milliseconds, difference between the timestamp in the received PBA and the current time of the day. The valid range is between 1 and 255. The default value is 7.
- **Minimum BRI Retransmit Timeout**—Minimum amount of time, in milliseconds, that the Cisco WLC waits for before retransmitting the BRI message. The valid range is between 500 and 65535. The default value is 1000.
- **Maximum BRI Retransmit Timeout**—Maximum amount of time, in milliseconds, that the Cisco WLC waits for before retransmitting the Binding Revocation Indication (BRI) message. The valid range is between 500 and 65535. The default value is 2000.

- **BRI Retries**—Maximum number of times that the Cisco WLC retransmits the BRI message before receiving the Binding Revocation Acknowledgment (BRA) message. The valid range is between 1 to 10. The default value is 1.

Step 3 Click **Apply**.

Note To clear your configuration, click **Clear Domain**.

Step 4 To create the LMA, follow these steps:

- a) Choose **Controller > PMIPv6 > LMA** and click **New**.
- b) Enter the values for the following parameters:

- **Member Name**—Name of the LMA connected to the Cisco WLC.
- **Member IP Address**—IP address of the LMA connected to the Cisco WLC.

- c) Click **Apply**.

Step 5 To create a PMIPv6 profile, follow these steps:

- a) Choose **Controller > PMIPv6 > Profiles** and click **New**.

- b) In the **PMIPv6 Profile > New** window, enter the values for the following parameters:

- **Profile Name**—Name of the profile.
- **Network Access Identifier**—Name of the Network Access Identifier (NAI) associated with the profile.
- **LMA Name**—Name of the LMA to which the profile is associated.
- **Access Point Node**—Name of the access point node; APN identifies a particular routing domain for user traffic.

- c) Click **Apply**.

Step 6 To configure PMIPv6 parameters for a WLAN, follow these steps:

- a) Choose **WLANs > WLAN ID**. The **WLANs > Edit** window is displayed.

- b) Click the **Advanced** tab.

- c) Under **PMIP**, from the **PMIP Mobility Type** drop-down list, choose the mobility type from the following options:

- **None**—Configures the WLAN with simple IP
- **PMIPv6**—Configures the WLAN with only PMIPv6

- d) From the **PMIP Profile** drop-down list, choose the PMIP profile for the WLAN.

- e) In the **PMIP Realm** field, enter the default realm for the WLAN.

- f) Click **Apply**.

Step 7 Click **Save Configuration**.

Configuring Proxy Mobile IPv6 (CLI)

Procedure

Step 1 Configure a PMIPv6 domain name by entering this command:

```
config pmipv6 domain domain-name
```

Note This command also enables the MAG functionality on the Cisco Wireless Controller (WLC).

Step 2 Configure MAG by using these commands:

- Configure the maximum binding update entries that are allowed by entering this command:

```
config pmipv6 mag binding maximum units
```

- Configure the binding entry lifetime by entering this command:

```
config pmipv6 mag lifetime units
```

- Configure the binding refresh interval by entering this command:

```
config pmipv6 mag refresh-time units
```

- Configure the initial timeout between PBUs if PBA does not arrive by entering this command:

```
config pmipv6 mag init-retx-time units
```

- Configure the maximum initial timeout between PBUs if PBA does not arrive by entering this command:

```
config pmipv6 mag max-retx-time units
```

- Configure the replay protection mechanism by entering this command:

```
config pmipv6 mag replay-protection {timestamp window units | sequence-no | mobile-node-timestamp}
```

- Configure the minimum or maximum amount of time, in seconds, that the MAG should wait for before it retransmits the binding revocation indication (BRI) message by entering this command:

```
config pmipv6 mag bri delay {min | max} units
```

- Configure the maximum number of times the MAG should retransmit the BRI message before it receives the binding revocation acknowledgment (BRA) message by entering this command:

```
config pmipv6 mag bri retries units
```

- Configure the list of LMAs for the MAG by entering this command:

```
config pmipv6 mag lma lma-name ipv4-address ip-address
```

- Add an APN for a MAG by entering this command:

```
config pmipv6 mag apn apn-name
```

A MAG can be configured for one of the different roles:

- **3gpp**—Specifies the role as 3GPP (Third Generation Partnership Project standard)
- **lte**—Specifies the role as Long Term Evolution (LTE) standard
- **wimax**—Specifies the role as WiMax

- wlan—Specifies the role as WLAN

Note By default, the MAG role is WLAN. However, for the lightweight access points, the MAG role should be configured as 3GPP. If the MAG role is 3GPP, it is mandatory to specify an APN for the MAG.

- Delete an APN by entering this command:

```
config pmipv6 delete mag apn apn-name
```

Step 3 Add a profile to a PMIPv6 domain by entering this command:

```
config pmipv6 add profile profile-name nai {user@realm | @realm | *} lma lma-name apn apn-name
```

Note nai stands for network access identifier, while apn stands for access point name.

Step 4 Delete a PMIPv6 entity by entering this command:

```
config pmipv6 delete {domain domain-name | lma lma-name | profile profile-name nai {user@realm | @realm | *}}
```

Step 5 Configure the PMIPv6 parameters for the WLAN by using these commands:

- Configure the default realm for the WLAN by entering this command:
config wlan pmipv6 default-realm {*realm-name* | **none**} *wlan-id*
- Configure the mobility type for a WLAN or for all WLANs by entering this command:
config wlan pmipv6 mobility-type {**enable** | **disable**} {*wlan-id* | **all**}
- Configure the profile name for a PMIPv6 WLAN by entering this command:
config wlan pmipv6 profile-name {**none** | *name*} *wlan-id*

Step 6 Save your changes by entering this command:

```
save config
```

Step 7 See the PMIPv6 configuration details by using the following **show** commands:

- See the details of a profile of a PMIPv6 domain by entering this command:
show pmipv6 domain *domain-name* **profile** *profile-name*
- See a summary of all the PMIPv6 profiles by entering this command:
show pmipv6 profile summary
- See global information about the PMIPv6 for a MAG by entering this command:
show pmipv6 mag globals
- See information about MAG bindings for LMA or NAI by entering this command:
show pmipv6 mag bindings {**lma** *lma-name* | **nai** *nai-name*}
- See statistical information about MAG by entering this command:
show pmipv6 mag stats domain *domain-name* **peer** *peer-name*
- See information about PMIPv6 for all clients by entering this command:

show client summary

- See information about PMIPv6 for a client by entering this command:

show client details *client-mac-address*

- See information about PMIPv6 for a WLAN by entering this command:

show wlan *wlan-id*
