



Appendix

This chapter contains the following sections:

- [Cisco Reference Design Port Map](#), on page 1
- [Web User Interface](#), on page 2
- [Compliance and Safety Information](#), on page 3
- [Restriction of Hazardous Substances \(RoHS\)](#), on page 4
- [Related Documentation](#), on page 4
- [Communications, Services, and Additional Information](#), on page 4

Cisco Reference Design Port Map

This section provides the port mapping relationship between the IOS XE interface name and the physical port.

Table 1: Port Mapping Relationship

IOS XE Interface Name	Reference Design Schematic Nets	Combo Port SFP Nets	PoE Controller Address	PoE Controller Port
Tel1/1	SFP_25			
Tel1/2	SFP_26			
Gi1/3	P3	SFP_3	1	2
Gi1/4	P4	SFP_4	1	3
Gi1/5	P1	SFP_1	1	0
Gi1/6	P2	SFP_2	1	1
Gi1/7	P7		1	6
Gi1/8	P8		1	7
Gi1/9	P5		1	4
Gi1/10	P6		1	5
Gi2/1	P11	SFP_11	2	2

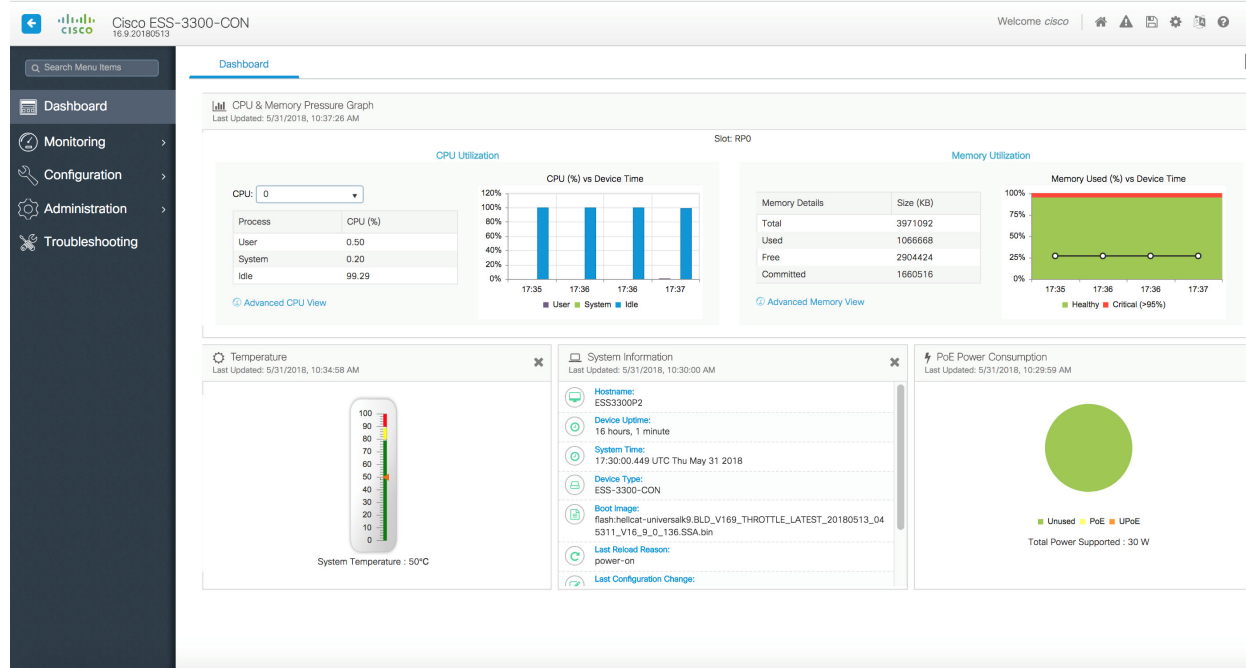
IOS XE Interface Name	Reference Design Schematic Nets	Combo Port SFP Nets	PoE Controller Address	PoE Controller Port
Gi2/2	P12	SFP_12	2	3
Gi2/3	P9	SFP_9	2	0
Gi2/4	P10	SFP_10	2	1
Gi2/5	P15		2	6
Gi2/6	P16		2	7
Gi2/7	P13		2	4
Gi2/8	P14		2	5
Gi2/9	P19		3	2
Gi2/10	P20		3	3
Gi2/11	P17		3	0
Gi2/12	P18		3	1
Gi2/13	P23		3	6
Gi2/14	P24		3	7
Gi2/15	P21		3	4
Gi2/16	P22		3	5

Web User Interface

The Cisco IOS-XE operating system provides a graphical user interface for monitoring and configuration of your device. The WebUI needs to be enabled before it can be used. Use these commands to enable it:

```
username admin privilege 15 password 0 <password>
ip http server
ip http authentication local
ip http secure-server
```

When launched, the initial display is a dashboard that looks similar to the following example:



Compliance and Safety Information

The ESS 3300 and ESS 3300-16TC were installed in a representative chassis, tested, and shown to meet the standards listed in the following table. Individual results will depend on final implementation. Formal compliance testing must be performed by the integrator in a fully assembled product.

Specification	Description
Safety	<ul style="list-style-type: none"> • UL 60950-1 Recognized Component (R/C) • CSA22.2-No. 60950-1 • EN60950-1 • IEC60950-1
Emissions	<ul style="list-style-type: none"> • EN 55022 / CISPR 22 • EN 55032 / CISPR 32 • FCC Part 15 Subpart B • ICES 003 for class A device

Specification	Description
Immunity	<ul style="list-style-type: none"> • EN 55024 • EN 55035 • EN 61000-4-2 • EN 61000-4-3 • EN 61000-4-4 • EN 61000-4-5 • EN 61000-4-8 • EN 61000-4-16 • EN 61000-4-18

Restriction of Hazardous Substances (RoHS)

RoHS is directive being adopted worldwide that restricts certain limits of the following materials from certain manufactured products:

- Lead (Pb): < 1000 ppm
- Mercury (Hg): < 100 ppm
- Cadmium (Cd): < 100 ppm
- Hexavalent Chromium: (Cr VI) < 1000 ppm
- Polybrominated Biphenyls (PBB): < 1000 ppm
- Polybrominated Diphenyl Ethers (PBDE): < 1000 ppm

Related Documentation

[ESS3300 Product Landing Page](#)

[IoT Switching Configuration Guides](#)

[Cisco IOS XE 17.x](#)

Communications, Services, and Additional Information

- To receive timely, relevant information from Cisco, sign up at [Cisco Profile Manager](#).
- To get the business impact you're looking for with the technologies that matter, visit [Cisco Services](#).
- To submit a service request, visit [Cisco Support](#).
- To discover and browse secure, validated enterprise-class apps, products, solutions, and services, visit [Cisco DevNet](#).
- To obtain general networking, training, and certification titles, visit [Cisco Press](#).
- To find warranty information for a specific product or product family, access [Cisco Warranty Finder](#).

Cisco Bug Search Tool

[Cisco Bug Search Tool](#) (BST) is a gateway to the Cisco bug-tracking system, which maintains a comprehensive list of defects and vulnerabilities in Cisco products and software. The BST provides you with detailed defect information about your products and software.

Documentation Feedback

To provide feedback about Cisco technical documentation, use the feedback form available in the right pane of every online document.

