



Software Configuration Guide, Cisco IOS XE Fuji 16.9.x (Catalyst 9300 Switches)

First Published: 2018-07-18

Americas Headquarters

Cisco Systems, Inc.
170 West Tasman Drive
San Jose, CA 95134-1706
USA
<http://www.cisco.com>
Tel: 408 526-4000
800 553-NETS (6387)
Fax: 408 527-0883



Preface

- [Document Conventions](#) , on page iii
- [Related Documentation](#), on page v
- [Obtaining Documentation and Submitting a Service Request](#), on page v

Document Conventions

This document uses the following conventions:

Convention	Description
^ or Ctrl	Both the ^ symbol and Ctrl represent the Control (Ctrl) key on a keyboard. For example, the key combination ^D or Ctrl-D means that you hold down the Control key while you press the D key. (Keys are indicated in capital letters but are not case sensitive.)
bold font	Commands and keywords and user-entered text appear in bold font .
<i>Italic font</i>	Document titles, new or emphasized terms, and arguments for which you supply values are in <i>italic font</i> .
Courier font	Terminal sessions and information the system displays appear in <code>courier font</code> .
Bold Courier font	Bold Courier font indicates text that the user must enter.
[x]	Elements in square brackets are optional.
...	An ellipsis (three consecutive nonbolded periods without spaces) after a syntax element indicates that the element can be repeated.
	A vertical line, called a pipe, indicates a choice within a set of keywords or arguments.
[x y]	Optional alternative keywords are grouped in brackets and separated by vertical bars.
{x y}	Required alternative keywords are grouped in braces and separated by vertical bars.

Convention	Description
[x {y z}]	Nested set of square brackets or braces indicate optional or required choices within optional or required elements. Braces and a vertical bar within square brackets indicate a required choice within an optional element.
string	A nonquoted set of characters. Do not use quotation marks around the string or the string will include the quotation marks.
< >	Nonprinting characters such as passwords are in angle brackets.
[]	Default responses to system prompts are in square brackets.
!, #	An exclamation point (!) or a pound sign (#) at the beginning of a line of code indicates a comment line.

Reader Alert Conventions

This document may use the following conventions for reader alerts:



Note Means *reader take note*. Notes contain helpful suggestions or references to material not covered in the manual.



Tip Means *the following information will help you solve a problem*.



Caution Means *reader be careful*. In this situation, you might do something that could result in equipment damage or loss of data.



Timesaver Means *the described action saves time*. You can save time by performing the action described in the paragraph.



Warning IMPORTANT SAFETY INSTRUCTIONS

This warning symbol means danger. You are in a situation that could cause bodily injury. Before you work on any equipment, be aware of the hazards involved with electrical circuitry and be familiar with standard practices for preventing accidents. Use the statement number provided at the end of each warning to locate its translation in the translated safety warnings that accompanied this device. Statement 1071

SAVE THESE INSTRUCTIONS

Related Documentation



Note Before installing or upgrading the device, refer to the device release notes.

- Cisco Catalyst 9300 Series Switches documentation, located at:
<http://www.cisco.com/go/c9300>
- Cisco SFP and SFP+ modules documentation, including compatibility matrixes, located at:
http://www.cisco.com/en/US/products/hw/modules/ps5455/tsd_products_support_series_home.html
- Cisco Validated Designs documents, located at:
<http://www.cisco.com/go/designzone>

Obtaining Documentation and Submitting a Service Request

For information on obtaining documentation, submitting a service request, and gathering additional information, see the monthly *What's New in Cisco Product Documentation*, which also lists all new and revised Cisco technical documentation, at:

<http://www.cisco.com/c/en/us/td/docs/general/whatsnew/whatsnew.html>

Subscribe to the *What's New in Cisco Product Documentation* as a Really Simple Syndication (RSS) feed and set content to be delivered directly to your desktop using a reader application. The RSS feeds are a free service and Cisco currently supports RSS version 2.0.



CHAPTER 1

Contents

Audio Video Bridging
Cisco TrustSec
Interface and Hardware Components
IP
IP Multicast Routing
IPv6
Layer 2
Multiprotocol Label Switching
Network Management
Network Powered Lighting
Programmability
Quality of Service
Routing
Security
Stack Manager and High Availability
System Management
VLAN



CHAPTER 2

Configuring the Switch Using the Web User Interface



Note Any figures included in the document are shown for illustrative purposes only.

- [Setting up the Switch, on page 3](#)
- [Connecting to the Switch, on page 4](#)
- [Creating User Accounts, on page 6](#)
- [Choosing Setup Options, on page 7](#)
- [Configuring Basic Device Settings, on page 7](#)
- [Configuring Your Device Based on a Site Profile, on page 9](#)
- [Configuring VLAN Settings, on page 11](#)
- [Configure STP Settings, on page 11](#)
- [Configuring DHCP, NTP, DNS and SNMP Settings, on page 12](#)
- [Configuring Port Settings, on page 13](#)

Setting up the Switch

After you complete the hardware installation, you need to setup the switch with configuration required to enable traffic to pass through the network. On your first day with your new device, you can perform a number of tasks to ensure that your device is online, reachable and easily configured.

The Web User Interface (Web UI) is an embedded GUI-based device-management tool that provides the ability to provision the device, to simplify device deployment and manageability, and to enhance the user experience. It comes with the default image, so there is no need to enable anything or install any license on the device. You can use WebUI to build configurations, and to monitor and troubleshoot the device without having CLI expertise.

Connecting to the Switch

Before you begin

Set up the DHCP Client Identifier on the client to get the IP address from the switch, and to be able to authenticate with Day 0 login credentials.

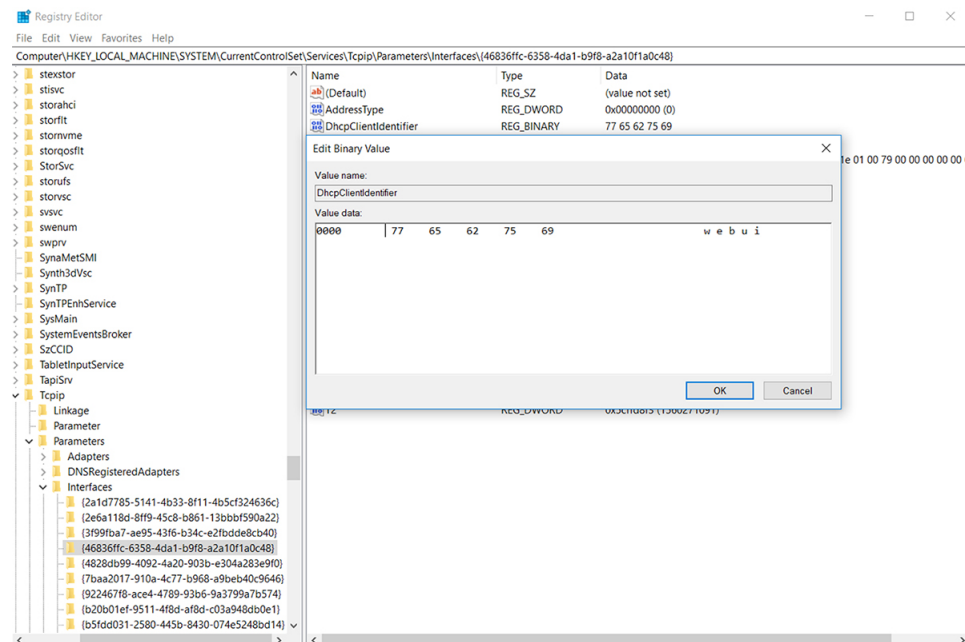
Setting up the DHCP Client Identifier on the client for Windows

1. Type **regedit** in the Windows search box on the taskbar and press **enter**.
2. If prompted by User Account Control, click **Yes** to open the Registry Editor.
3. Navigate to

Computer\HKEY_LOCAL_MACHINE\SYSTEM\CurrentControlSet\Services\Tcpip\Parameters\Interfaces and locate the **Ethernet Interface** Global Unique Identifier (GUID).

4. Add a new REG_BINARY **DhcpClientIdentifier** with Data **77 65 62 75 69** for **webui**. You need to manually type in the value.

Figure 1: Setting up DHCP Client Identifier on Windows

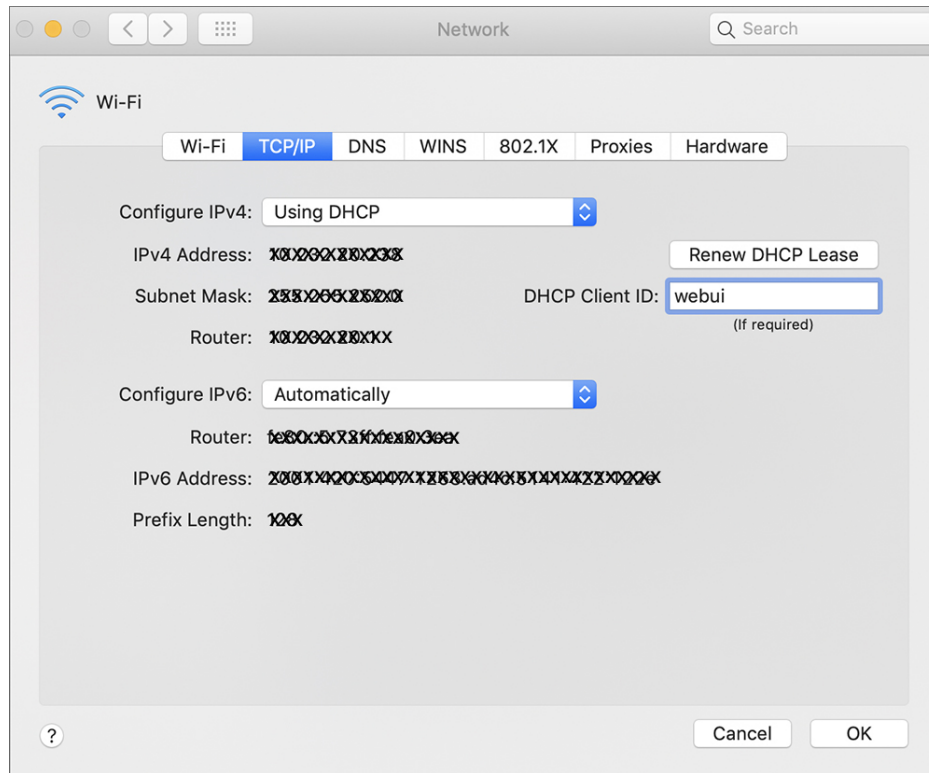


5. Restart the PC for the configuration to take effect.

Setting up the DHCP Client Identifier on the client for MAC

1. Go to **System Preferences > Network > Advanced > TCP > DHCP Client ID:** and enter **webui**.

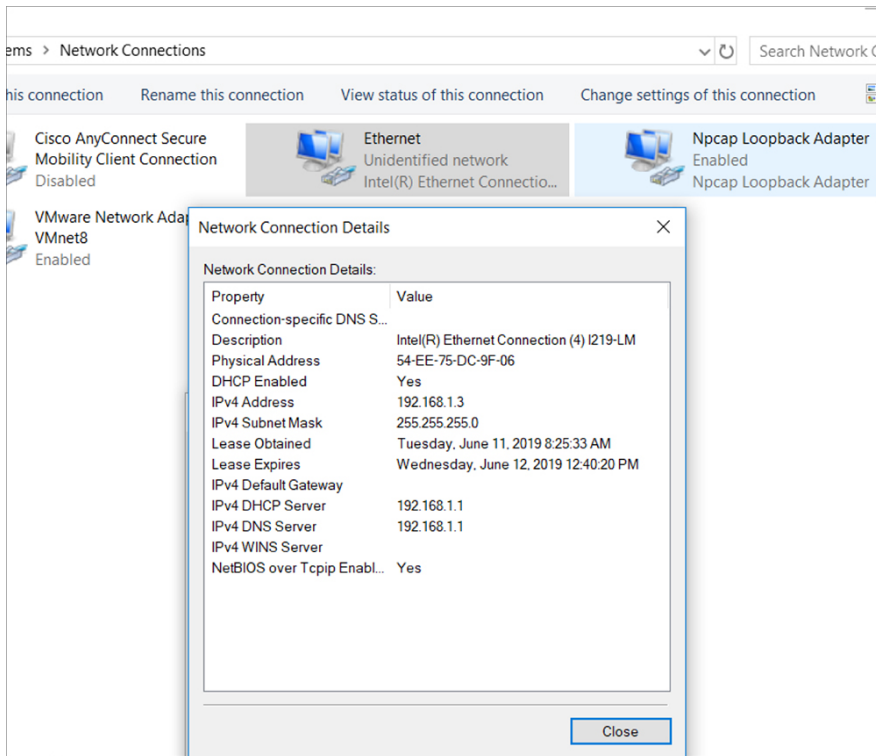
Figure 2: Setting up DHCP Client Identifier on MAC



2. Click **OK** to save the changes.

The bootup script runs the configuration wizard, which prompts you for basic configuration input: **(Would you like to enter the initial configuration dialog? [yes/no]:)**. To configure Day 0 settings using the web UI, do not enter a response. Perform the following tasks instead:

-
- Step 1** Make sure that no devices are connected to the switch.
 - Step 2** Connect one end of an ethernet cable to one of the downlink (non-management) ports on the active supervisor and the other end of the ethernet cable to the host (PC/MAC).
 - Step 3** Set up your PC/MAC as a DHCP client, to obtain the IP address of the switch automatically. You should get an IP address within the 192.168.1.x/24 range.

Figure 3: Obtaining the IP Address

It may take up to three mins. You must complete the Day 0 setup through the web UI before using the device terminal.

Step 4 Launch a web browser on the PC and enter the device IP address (**https://192.168.1.1**) in the address bar.

Step 5 Enter the Day 0 **username webui** and **password serial number** of the switch.

The serial number is case sensitive.

What to do next

Create a user account.

Creating User Accounts

Setting a username and password is the first task you will perform on your device. Typically, as a network administrator, you will want to control access to your device and prevent unauthorized users from seeing your network configuration or manipulating your settings.

Step 1 Log on using the default username and password provided with the device.

Step 2 Set a password of up to 25 alphanumeric characters. The username password combination you set gives you privilege 15 access. The string cannot start with a number, is case sensitive, and allows spaces but ignores leading spaces.

Figure 4: Create Account

The screenshot shows the 'Create Account' step of the Cisco Configuration Setup Wizard. The page has a breadcrumb trail at the top: CREATE ACCOUNT (active), BASIC SETTINGS, SITE PROFILE, SWITCH WIDE SETTINGS, PORT SETTINGS, and SUMMARY. The main content area is divided into two columns. The left column contains three input fields: 'Login Name', 'Password', and 'Confirm password'. Below these fields is a 'Create New Account' button. The right column is titled 'Hardware and Software details of the device.' and contains five sections, each with a search icon and a text input field: 'Platform Type:', 'IOS Installed:', 'Serial Number:', 'Modules:', and 'License Installed:'. At the bottom right of the right column is a 'Basic Device Settings >' button.

Choosing Setup Options

Select **Wired Network** to configure your device based on a site profile, and continue to configure switch wide settings. Otherwise, continue to the next step and configure only basic settings for your device.

Configuring Basic Device Settings

On the **Basic Device Settings** page configure the following information:

- Step 1** In the **Device ID and Location Settings** section, type a unique name to identify your device in the network.
- Step 2** Choose the date and time settings for your device. To synchronize your device with a valid outside timing mechanism, such as an NTP clock source, choose Automatic, or choose Manual to set it yourself.

Figure 5: Basic Settings - Device ID and Location Settings

Configuration Setup Wizard

CREATE ACCOUNT BASIC SETTINGS SITE PROFILE SWITCH WIDE SETTINGS PORT SETTINGS SUMMARY

Device ID and Location Settings

Device Name ⓘ Device name is mandatory

Date & Time Mode Automatic

Mon Aug 13 2018 14:18:06

Device Management Settings

Management Interface gigabitEthernet0/0

Management IP x.x.x.x

Subnet Mask x.x.x.x

Default Gateway (optional) x.x.x.x (optional)

[HELP AND TIPS](#)

device name is an identification that is given to the physical hardware device. If manual time is set then the difference in time will be adjusted at the time of configuring the device.

The management VRF is a dedicated, secure VRF instance that allows users to manage the router inband on switched virtual interfaces (SVIs) and physical interfaces.

Select this to enable access to the device using Telnet. Configure a username and password to authenticate user access to the device.

Select this to enable secure remote access to the device using Secure Shell (SSH). Configure a username and password to authenticate user access to the device.

Enable transparent mode if you do not want the switch to participate in VTP. A VTP transparent switch does not advertise its VLAN configuration and does not synchronize its VLAN configuration based on received advertisements, but transparent switches do forward VTP advertisements that they receive out their trunk

[< Setup Options](#) [Site Profile >](#)

Step 3 In the **Device Management Settings** section, assign an **IP address** to the management interface. Ensure that the IP address you assign is part of the subnet mask you enter.

Step 4 Optionally, enter an **IP address** to specify the default gateway.

Step 5 To enable access to the device using telnet, check the **Telnet** check box.

Step 6 To enable secure remote access to the device using Secure Shell (SSH), check the **SSH** check box.

Step 7 Check the **VTP transparent mode** check box to disable the device from participating in VTP.

If you did not select **Wired Network**, in the earlier step, continue to the next screen to verify your configuration on the **Day 0 Config Summary** screen, and click **Finish**. To automatically configure your device based on a site profile, click **Setup Options**, and select **Wired Network**.

Figure 6: Basic Settings - Device Management Settings

Configuration Setup Wizard

CREATE ACCOUNT BASIC SETTINGS SITE PROFILE SWITCH WIDE SETTINGS PORT SETTINGS SUMMARY

Mon Aug 13 2018 14:18:37

Device Management Settings

Management Interface gigabitEthernet0/0

Management IP x.x.x.x

Subnet Mask x.x.x.x

Default Gateway (optional) x.x.x.x (optional)

Telnet

SSH

VTP transparent mode

[HELP AND TIPS](#)

device name is an identification that is given to the physical hardware device. If manual time is set then the difference in time will be adjusted at the time of configuring the device.

The management VRF is a dedicated, secure VRF instance that allows users to manage the router inband on switched virtual interfaces (SVIs) and physical interfaces.

Select this to enable access to the device using Telnet. Configure a username and password to authenticate user access to the device.

Select this to enable secure remote access to the device using Secure Shell (SSH). Configure a username and password to authenticate user access to the device.

Enable transparent mode if you do not want the switch to participate in VTP. A VTP transparent switch does not advertise its VLAN configuration and does not synchronize its VLAN configuration based on received advertisements, but transparent switches do forward VTP advertisements that they receive out their trunk

[< Setup Options](#) [Site Profile >](#)

Configuring Your Device Based on a Site Profile

To ease your configuration tasks and save time, choose a site profile based on where your device may be installed and managed in your network. Based on the site profile you choose, your device is automatically configured according to Cisco best practices. You can easily modify this default configuration, from the corresponding detailed configuration screens.

Choosing a site profile as part of Quick Setup allows you to configure your device based on the business needs of your enterprise. For example, you could use your device as an access switch, to connect client nodes and endpoints on your network, or as a distribution switch, to route packets between subnets and VLANs.

Table 1: Default Configuration Loaded with Each Site Profile (Access Switches)

Setting	Single Access Switch (Single Uplink)	Single Access Switch (Single Port Channel Uplink)	Single Access Switch (Redundant Port Channel Uplink)
Hostname	The hostname or device name you provided as part of Quick Setup	The hostname or device name you provided as part of Quick Setup	The hostname or device name you provided as part of Quick Setup
Spanning Tree Mode	RPVST+	RPVST+	RPVST+
VTP	Mode Transparent	Mode Transparent	Mode Transparent
UDLD	Enabled	Enabled	Enabled
Error Disable Recovery	Recovery mode set to Auto	Recovery mode set to Auto	Recovery mode set to Auto
Port Channel Load Balance	Source Destination IP	Source Destination IP	Source Destination IP
SSH	Version 2	Version 2	Version 2
SCP	Enabled	Enabled	Enabled
VTY Access to Switch	Enabled	Enabled	Enabled
Service Timestamp	Enabled	Enabled	Enabled
VLAN	The following VLANs are created: <ul style="list-style-type: none"> • Default VLAN • Data VLAN • Voice VLAN • Management VLAN 	The following VLANs are created: <ul style="list-style-type: none"> • Default VLAN • Data VLAN • Voice VLAN • Management VLAN 	The following VLANs are created: <ul style="list-style-type: none"> • Default VLAN • Data VLAN • Voice VLAN • Management VLAN

Setting	Single Access Switch (Single Uplink)	Single Access Switch (Single Port Channel Uplink)	Single Access Switch (Redundant Port Channel Uplink)
Management Interface	Layer 3 settings configured on the management port, based on Quick Setup	Layer 3 settings configured on the management port, based on Quick Setup	Layer 3 settings configured on the management port, based on Quick Setup
IPv6 Host Policy	IPv6 host policy created	IPv6 host policy created	IPv6 host policy created
QoS Policy for Downlink Ports	Auto QoS Policy for Access defined	Auto QoS Policy for Access defined	Auto QoS Policy for Access defined
QoS Policy for Uplink Ports	QoS Policy for Distribution created	QoS Policy for Distribution created	QoS Policy for Distribution created
Uplink Interfaces	Selected uplink interfaces configured as trunk ports, set to allow all VLANs	Selected ports configured as Port-channel in trunk mode, set to allow all VLANs.	Selected ports configured as Port-channel in trunk mode, set to allow all VLANs.
Downlink Interfaces	Downlink ports configured in Access mode	Downlink ports configured in Access mode	Downlink ports configured in Access mode
Port-channel	Not configured	Port-channel to distribution created	Port-channel to distribution created

Figure 7: Site Profile - Access Switches

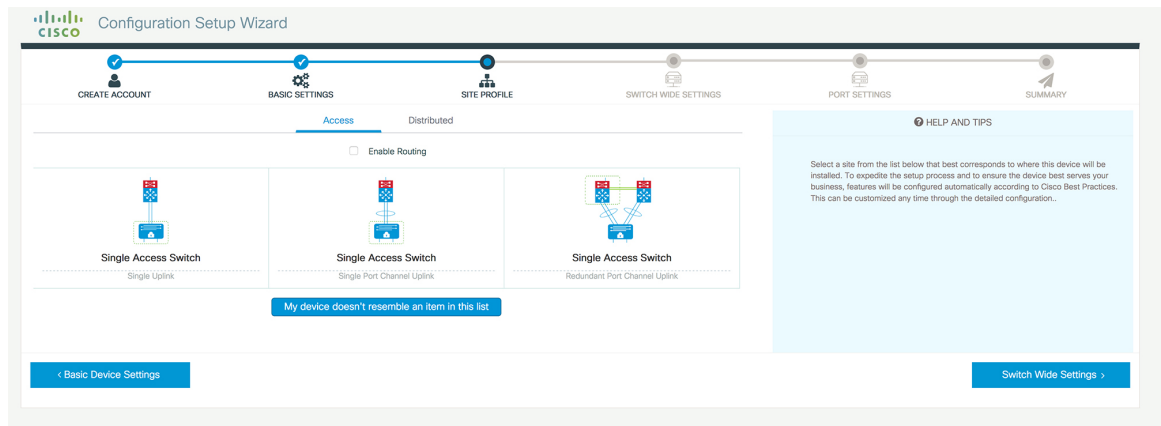
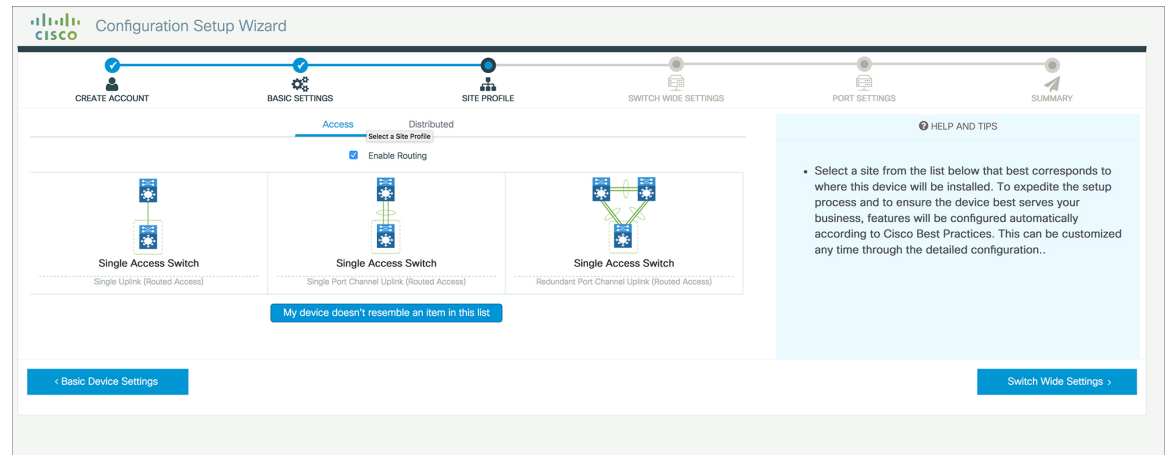


Figure 8: Site Profile - Access Switches (with Routed Access)



Configuring VLAN Settings

-
- Step 1** In the **VLAN Configuration** section, you can configure both data and voice VLANs. Type a name for your data VLAN.
- Step 2** To configure a data VLAN, ensure that the **Data VLAN** check box is checked, type a name for your VLAN, and assign a VLAN ID to it. If you are creating several VLANs, indicate only a VLAN range.
- Step 3** To configure a voice VLAN, ensure that the **Voice VLAN** check box is checked, type a name for your VLAN, and assign a VLAN ID to it. If you are creating several VLANs, indicate a VLAN range.
-

Configure STP Settings

-
- Step 1** RPVST is the default STP mode configured on your device. You can change it to PVST from the **STP Mode** drop-down list.
- Step 2** To change a bridge priority number from the default value 32748, change **Bridge Priority** to Yes and choose a priority number from the drop-down list.

Figure 9: VLAN and STP Settings

The screenshot shows the Cisco Configuration Setup Wizard interface. At the top, there is a progress bar with six steps: CREATE ACCOUNT, BASIC SETTINGS, SITE PROFILE, SWITCH WIDE SETTINGS, PORT SETTINGS, and SUMMARY. The current step is SWITCH WIDE SETTINGS.

The main content area is divided into three sections:

- VLAN Configuration:** Contains three checkboxes: Data VLAN, Voice VLAN, and Management Vlan (Switch Wide Settings).
- STP Configuration:** Contains a dropdown menu for STP Mode (set to RPVST), a checked checkbox for Bridge Priority, and a dropdown menu for Bridge Priority Number (set to 32768).
- General Configuration:** Contains a button labeled "< Site Profile" and a button labeled "Port Settings >".

On the right side, there is a "HELP AND TIPS" section with the following text:

- A data VLAN is a VLAN that is configured to carry user-generated traffic. Voice VLAN allows you to enhance VoIP service by configuring ports to carry IP voice traffic from IP phones on a specific VLAN.
- STP is to prevent bridge loops and the broadcast radiation that results from them.
- The part of a network address which identifies it as belonging to a particular domain. Configure Syslog Client within the Cisco Device, use a severity level of warnings through emergencies to generate error message about software and hardware malfunctions.
- Protocol for network management and its collecting information from, and configuring, network devices, such as switches, and routers on an IP network.

Configuring DHCP, NTP, DNS and SNMP Settings

- Step 1** In the **Domain Details** section, enter a domain name that the software uses to complete unqualified hostnames.
- Step 2** Type an IP address to identify the DNS server. This server is used for name and address resolution on your device.
- Step 3** In the **Server Details** section, type the IP address of the DNS server that you want to make available to DHCP clients.
- Step 4** In the **Syslog Server** field, type the IP address of the server to which you want to send syslog messages.
- Step 5** To ensure that your device is configured with the right time, date and timezone, enter the IP address of the NTP server with which you want to synchronize the device time.
- Step 6** In the **Management Details** section, type an IP address to identify the SNMP server. SNMPv1, SNMPv2, and SNMPv3 are supported on your device.
- Step 7** Specify the **SNMP community** string to permit access to the SNMP protocol.

Figure 10: DHCP, NTP, DNS and SNMP Settings

Configuration Setup Wizard

CREATE ACCOUNT BASIC SETTINGS SITE PROFILE SWITCH WIDE SETTINGS PORT SETTINGS SUMMARY

General Configuration

Domain Details

Domain Name

DNS Server

Server Details

DHCP Server

Syslog Server

NTP Server

Management Details

< Site Profile Port Settings >

HELP AND TIPS

A data VLAN is a VLAN that is configured to carry user-generated traffic. Voice VLAN allows you to enhance VoIP service by configuring ports to carry IPvoice traffic from IP phones on a specific VLAN.

STP is to prevent bridge loops and the broadcast radiation that results from them.

The part of a network address which identifies it as belonging to a particular domain. Configure Syslog Client within the Cisco Device, use a severity level of warnings through emergencies to generate error message about software and hardware malfunctions.

- Protocol for network management and its collecting information from, and configuring, network devices, such as switches, and routers on an IP network.

What to do next

Configure port settings.

Configuring Port Settings

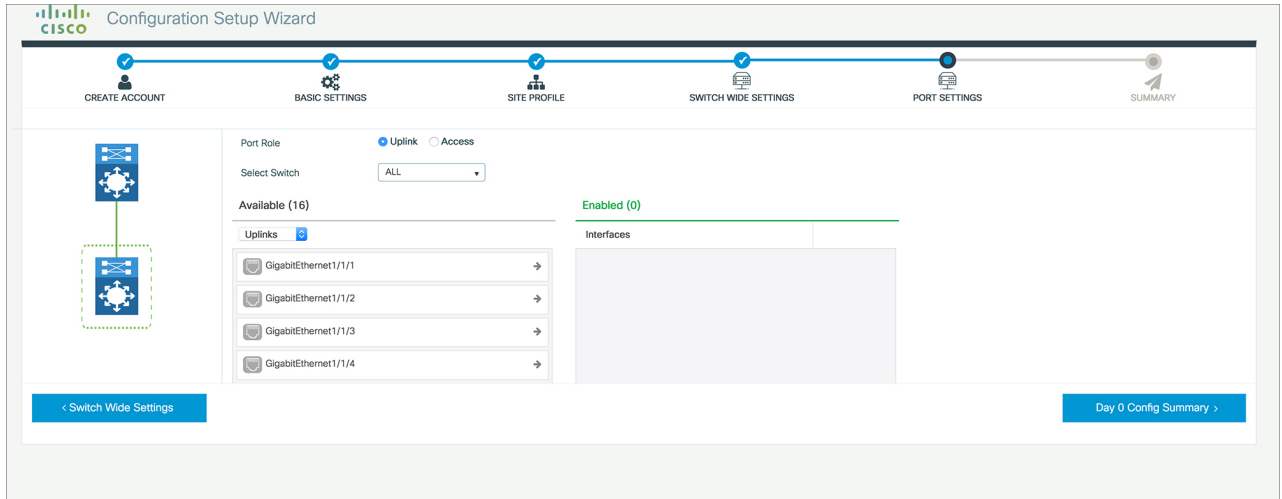
Step 1 Based on the site profile chosen in the earlier step which is displayed in the left-pane, select the **Port Role** from among the following options:

- Uplink – For connecting to devices towards the core of the network.
- Downlink – For connecting to devices further down in the network topology.
- Access – For connecting guest devices that are VLAN-unaware.

Step 2 Choose an option from the **Select Switch** drop-down list.

Step 3 Make selections from the **Available** list of interfaces based on how you want to enable them and move them to the **Enabled** list.

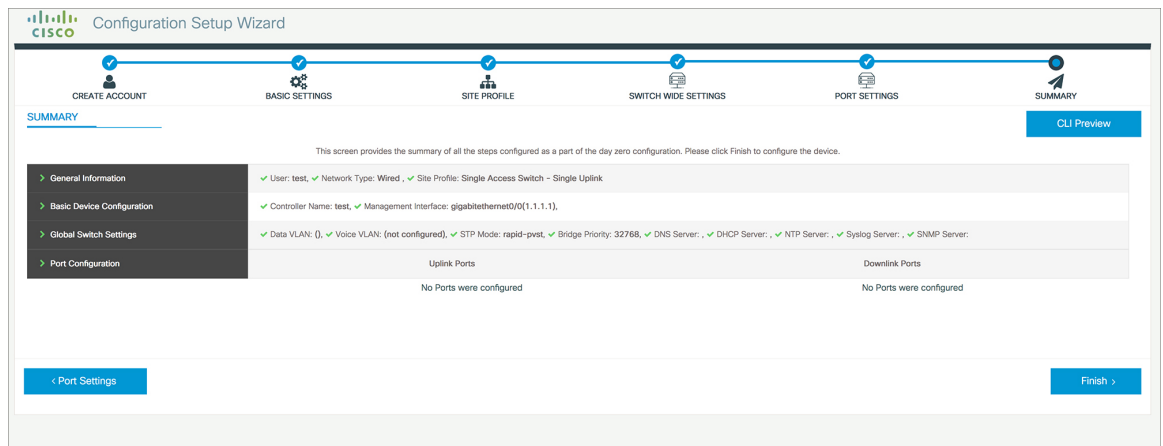
Figure 11: Port Settings



What to do next

- Click **Day 0 Config Summary** to verify your setup.
- Click **Finish**.

Figure 12: Day 0 Config Summary



Notices

THE SPECIFICATIONS AND INFORMATION REGARDING THE PRODUCTS IN THIS MANUAL ARE SUBJECT TO CHANGE WITHOUT NOTICE. ALL STATEMENTS, INFORMATION, AND RECOMMENDATIONS IN THIS MANUAL ARE BELIEVED TO BE ACCURATE BUT ARE PRESENTED WITHOUT WARRANTY OF ANY KIND, EXPRESS OR IMPLIED. USERS MUST TAKE FULL RESPONSIBILITY FOR THEIR APPLICATION OF ANY PRODUCTS.

THE SOFTWARE LICENSE AND LIMITED WARRANTY FOR THE ACCOMPANYING PRODUCT ARE SET FORTH IN THE INFORMATION PACKET THAT SHIPPED WITH THE PRODUCT AND ARE INCORPORATED HEREIN BY THIS REFERENCE. IF YOU ARE UNABLE TO LOCATE THE SOFTWARE LICENSE OR LIMITED WARRANTY, CONTACT YOUR CISCO REPRESENTATIVE FOR A COPY.

The Cisco implementation of TCP header compression is an adaptation of a program developed by the University of California, Berkeley (UCB) as part of UCB's public domain version of the UNIX operating system. All rights reserved. Copyright © 1981, Regents of the University of California.

NOTWITHSTANDING ANY OTHER WARRANTY HEREIN, ALL DOCUMENT FILES AND SOFTWARE OF THESE SUPPLIERS ARE PROVIDED "AS IS" WITH ALL FAULTS. CISCO AND THE ABOVE-NAMED SUPPLIERS DISCLAIM ALL WARRANTIES, EXPRESSED OR IMPLIED, INCLUDING, WITHOUT LIMITATION, THOSE OF MERCHANTABILITY, FITNESS FOR A PARTICULAR PURPOSE AND NONINFRINGEMENT OR ARISING FROM A COURSE OF DEALING, USAGE, OR TRADE PRACTICE.

IN NO EVENT SHALL CISCO OR ITS SUPPLIERS BE LIABLE FOR ANY INDIRECT, SPECIAL, CONSEQUENTIAL, OR INCIDENTAL DAMAGES, INCLUDING, WITHOUT LIMITATION, LOST PROFITS OR LOSS OR DAMAGE TO DATA ARISING OUT OF THE USE OR INABILITY TO USE THIS MANUAL, EVEN IF CISCO OR ITS SUPPLIERS HAVE BEEN ADVISED OF THE POSSIBILITY OF SUCH DAMAGES.

Any Internet Protocol (IP) addresses and phone numbers used in this document are not intended to be actual addresses and phone numbers. Any examples, command display output, network topology diagrams, and other figures included in the document are shown for illustrative purposes only. Any use of actual IP addresses or phone numbers in illustrative content is unintentional and coincidental.

All printed copies and duplicate soft copies of this document are considered uncontrolled. See the current online version for the latest version.

Cisco has more than 200 offices worldwide. Addresses and phone numbers are listed on the Cisco website at www.cisco.com/go/offices.

