



## CIMC Configuration

---

The Cisco Integrated Management Controller (CIMC) Configuration is the user interface used to manage the server. This appendix includes the following information about using the CIMC Utility to set up remote server management:

- [Using CIMC Configuration Utility, on page 1](#)

## Using CIMC Configuration Utility

After booting the server, the Cisco screen is displayed, which allows you to enter the Cisco Integrated Management Controller (CIMC) Configuration Utility. The CIMC interface can be used for remote server management.

A monitor and keyboard must be attached directly to the Threat Grid Appliance to use this utility.



---

**Note** CIMC is not supported on Threat Grid M5 Appliance servers.

---

---

**Step 1** Power on the server.

Figure 1: Cisco Screen

```

          .|.|.|.|.|.|.|
          CISCO

Press <F2> Setup, <F6> Boot Menu, <F7> Diagnostics, <F8>Cisco IMC Configuration,
<F12> Network Boot

Bios Version : C220M3.2.0.3.0.080120140402
Platform ID  : C220M3

Cisco IMC IPv4 Address : 198.18.2.21
Cisco IMC MAC Address  : 50:87:89:B7:70:C4

\ Loading LSI EFI SAS Driver
Total Memory = 512 GB Effective Memory = 512 GB
Memory Operating Speed 1866 Mhz

Entering CIMC Configuration Utility...

```

**Step 2** After the memory check is completed, press **F8** to enter the CIMC Configuration Utility.

Figure 2: CIMC Configuration Utility

```

Cisco IMC Configuration Utility Version 2.0 Cisco Systems, Inc.
*****
NIC Properties
NIC mode          NIC redundancy
Dedicated:       [X]          None:             [X]
Shared LOM:      [ ]          Active-standby:   [ ]
Cisco Card:      [ ]          Active-active:    [ ]
Shared LOM Ext:  [ ]

IP (Basic)
IPv4:            [X]          IPv6:             [ ]
DHCP enabled    [ ]
CIMC IP:         198.18.2.21
Prefix/Subnet:  255.255.255.0
Gateway:        198.18.2.1
Pref DNS Server: 198.18.2.1

VLAN (Advanced)
VLAN enabled:   [ ]
VLAN ID:        1
Priority:        0

*****
<Up/Down>Selection <F10>Save <Space>Enable/Disable <F5>Refresh <ESC>Exit
<F1>Additional settings

```

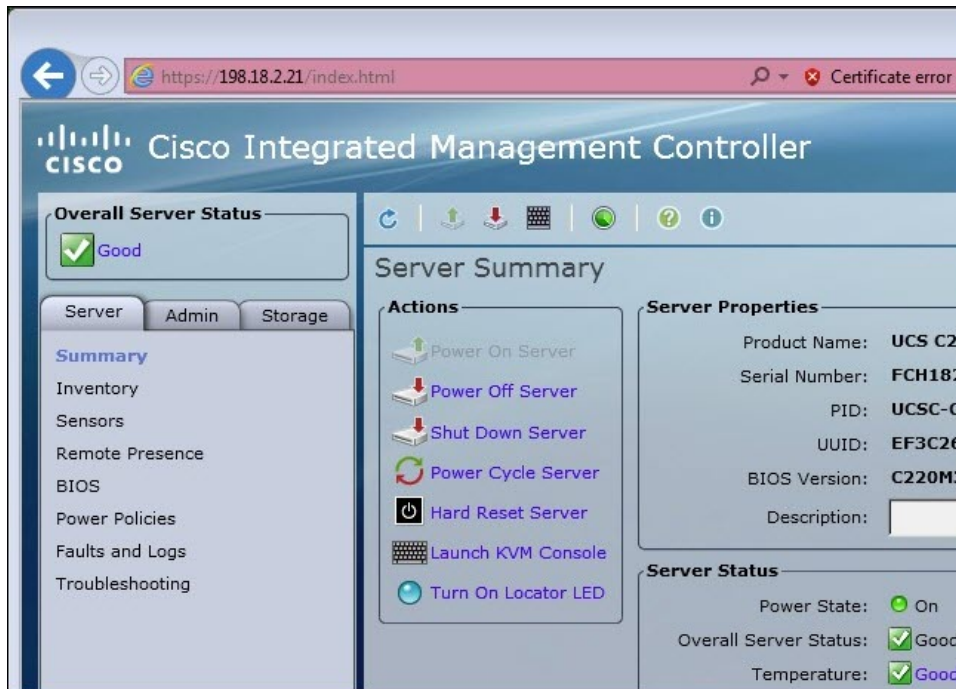
**Step 3** In the CIMC configuration utility, set up an IP address that can be used for remote server management.

**Step 4** Save the configuration and exit the utility.

**Step 5** In a web browser, enter **https://<CIMC-IP address>/** to open the CIMC interface.

**Step 6** Enter the initial **User Name** (admin) and **Password** (password).

Figure 3: Cisco Integrated Management Controller (CIMC) Interface



The CIMC interface can now be used to view the server health and open a KVM to complete the remaining setup steps remotely.

