



## RSVP Interface-Based Receiver Proxy

---

The RSVP Interface-Based Receiver Proxy feature lets you configure a proxy router by outbound interface instead of configuring a destination address for each flow going through the same interface.

- [Prerequisites for RSVP Interface-Based Receiver Proxy, on page 1](#)
- [Restrictions for RSVP Interface-Based Receiver Proxy, on page 1](#)
- [Information About RSVP Interface-Based Receiver Proxy, on page 1](#)
- [How to Configure RSVP Interface-Based Receiver Proxy, on page 2](#)
- [Configuration Examples for RSVP Interface-Based Receiver Proxy, on page 5](#)
- [Additional References, on page 8](#)
- [Feature Information for RSVP Interface-Based Receiver Proxy, on page 10](#)
- [Glossary, on page 10](#)

## Prerequisites for RSVP Interface-Based Receiver Proxy

You must configure an IP address and enable Resource Reservation Protocol (RSVP) on one or more interfaces on at least two neighboring routers that share a link within the network.

## Restrictions for RSVP Interface-Based Receiver Proxy

- Filtering using access control lists (ACLs), application IDs, or other mechanisms is not supported.
- A provider edge (PE) router cannot switch from being a proxy node to a transit node for a given flow during the lifetime of the flow.

## Information About RSVP Interface-Based Receiver Proxy

### Feature Overview of RSVP Interface-Based Receiver Proxy

The RSVP Interface-Based Receiver Proxy feature allows you to use RSVP to signal reservations and guarantee bandwidth on behalf of a receiver that does not support RSVP by terminating the PATH message and generating a RESV message in the upstream direction on an RSVP-capable router on the path to the endpoint. An example

is a video-on-demand flow from a video server to a set-top box, which is a computer that acts as a receiver and decodes the incoming video signal from the video server.

Because set-top boxes may not support RSVP natively, you cannot configure end-to-end RSVP reservations between a video server and a set-top box. Instead, you can enable the RSVP interface-based receiver proxy on the router that is closest to that set-top box.

The router terminates the end-to-end sessions for many set-top boxes and performs admission control on the outbound (or egress) interface of the PATH message, where the receiver proxy is configured, as a proxy for Call Admission Control (CAC) on the router-to-set-top link. The RSVP interface-based receiver proxy determines which PATH messages to terminate by looking at the outbound interface to be used by the traffic flow.

You can configure an RSVP interface-based receiver proxy to terminate PATH messages going out a specified interface with a specific action (reply with RESV, or reject). The most common application is to configure the receiver proxy on the edge of an administrative domain on interdomain interfaces. The router then terminates PATH messages going out the administrative domain while still permitting PATH messages transitioning through the router within the same administrative domain to continue downstream.

The router terminates the end-to-end sessions for many set-top boxes, with the assumption that the links further downstream (for example, from the DSLAM to the set-top box) never become congested or, more likely, in the case of congestion, that the voice and video traffic from the router gets the highest priority and access to the bandwidth.

## Benefits of RSVP Interface-Based Receiver Proxy

Before the RSVP Interface-Based Receiver Proxy feature was introduced, you had to configure a receiver proxy for every separate RSVP stream or set-top box. The RSVP Interface-Based Receiver Proxy feature allows you to configure the proxy by outbound interface. For example, if there were 100 set-top boxes downstream from the proxy router, you had to configure 100 proxies. With this enhancement, you configure only the outbound interfaces. In addition, the receiver proxy is guaranteed to terminate the reservation only on the last hop within the core network. Nodes that may function as transit nodes for some PATH messages but should proxy others depending on their placement in the network can perform the correct functions on a flow-by-flow basis.

## How to Configure RSVP Interface-Based Receiver Proxy

### Enabling RSVP on an Interface

#### SUMMARY STEPS

1. **enable**
2. **configure terminal**
3. *interface type number*
4. **ip rsvp bandwidth** [*interface-kbps* ][*single-flow-kbps* ]
5. **end**

## DETAILED STEPS

	Command or Action	Purpose
Step 1	<b>enable</b> <b>Example:</b> Device> enable	Enables privileged EXEC mode. <ul style="list-style-type: none"> <li>• Enter your password if prompted.</li> </ul>
Step 2	<b>configure terminal</b> <b>Example:</b> Device# configure terminal	Enters global configuration mode.
Step 3	<b>interface <i>type number</i></b> <b>Example:</b> Device(config)# interface Ethernet0/0	Configures the interface type and enters interface configuration mode.
Step 4	<b>ip rsvp bandwidth [<i>interface-kbps</i> ][<i>single-flow-kbps</i> ]</b> <b>Example:</b> Device(config-if)# ip rsvp bandwidth 7500	Enables RSVP bandwidth on an interface. <ul style="list-style-type: none"> <li>• The optional <i>interface-kbps</i> and <i>single-flow-kbps</i> arguments specify the amount of bandwidth that can be allocated by RSVP flows or to a single flow, respectively. Values are from 1 to 10000000.</li> </ul> <p><b>Note</b> Repeat this command for each interface that you want to enable.</p>
Step 5	<b>end</b> <b>Example:</b> Device(config-if)# end	(Optional) Returns to privileged EXEC mode.

## Configuring a Receiver Proxy on an Outbound Interface

## SUMMARY STEPS

1. enable
2. configure terminal
3. interface type slot / subslot / port
4. ip rsvp listener outbound {reply | reject}
5. end

## DETAILED STEPS

	Command or Action	Purpose
Step 1	enable	Enables privileged EXEC mode.

	Command or Action	Purpose
	<b>Example:</b> <pre>Router&gt; enable</pre>	<ul style="list-style-type: none"> <li>Enter your password if prompted.</li> </ul>
<b>Step 2</b>	<b>configure terminal</b> <b>Example:</b> <pre>Router# configure terminal</pre>	Enters global configuration mode.
<b>Step 3</b>	<b>interface type slot / subslot / port</b> <b>Example:</b> <pre>Router(config)# interface gigabitEthernet 0/0/0</pre>	Configures the interface type and enters interface configuration mode.
<b>Step 4</b>	<b>ip rsvp listener outbound {reply   reject}</b> <b>Example:</b> <pre>Router(config-if)# ip rsvp listener outbound reject</pre>	Configures an RSVP router to listen for PATH messages sent through a specified interface. <ul style="list-style-type: none"> <li>Enter the <b>reply</b> keyword or the <b>reject</b> keyword to specify the response that you want to PATH messages.</li> </ul>
<b>Step 5</b>	<b>end</b> <b>Example:</b> <pre>Router(config-if)# end</pre>	(Optional) Returns to privileged EXEC mode.

## Verifying the RSVP Interface-Based Receiver Proxy Configuration

Perform the following task to verify the configuration. You can use these commands in any order.



**Note** You can use the following **show** commands in user EXEC or privileged EXEC mode.

### SUMMARY STEPS

- enable**
- show ip rsvp listeners** [*ip-address* | **any**] [**udp** | **tcp** | **any**] [*protocol*][*dst-port* | **any**]
- show ip rsvp sender** [**detail**] [**filter** [*destination address*] [**dst-port** *port-number*] [*source address*] [**src-port** *port-number*]]
- show ip rsvp reservation** [**detail**] [**filter** [*destination address*] [**dst-port** *port-number*] [*source address*] [**src-port** *port-number*]]
- exit**

### DETAILED STEPS

	Command or Action	Purpose
<b>Step 1</b>	<b>enable</b>	(Optional) Enables privileged EXEC mode.

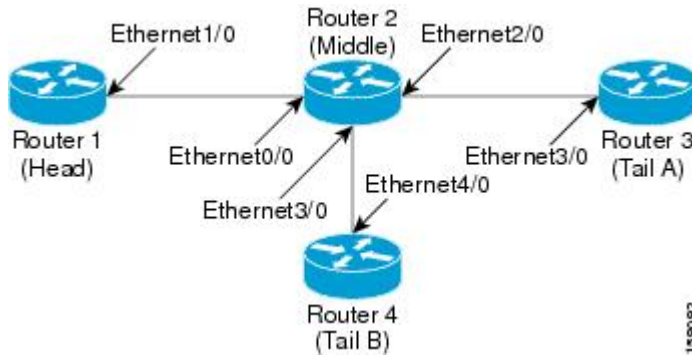
	Command or Action	Purpose
	<b>Example:</b>  Router> enable	<ul style="list-style-type: none"> <li>Enter your password if prompted.</li> </ul> <b>Note</b> Omit this step if you are using the <b>show</b> commands in user EXEC mode.
<b>Step 2</b>	<b>show ip rsvp listeners</b> [ <i>ip-address</i>   <b>any</b> ] [ <b>udp</b>   <b>tcp</b>   <b>any</b>   <i>protocol</i> ][ <i>dst-port</i>   <b>any</b> ]  <b>Example:</b>  Router# show ip rsvp listeners	Displays RSVP listeners for a specified port or protocol.
<b>Step 3</b>	<b>show ip rsvp sender</b> [ <b>detail</b> ] [ <b>filter</b> [ <b>destination</b> <i>address</i> ] [ <b>dst-port</b> <i>port-number</i> ] [ <b>source</b> <i>address</i> ] [ <b>src-port</b> <i>port-number</i> ]]  <b>Example:</b>  Router# show ip rsvp sender detail	Displays RSVP PATH-related sender information currently in the database.
<b>Step 4</b>	<b>show ip rsvp reservation</b> [ <b>detail</b> ] [ <b>filter</b> [ <b>destination</b> <i>address</i> ] [ <b>dst-port</b> <i>port-number</i> ] [ <b>source</b> <i>address</i> ] [ <b>src-port</b> <i>port-number</i> ]]  <b>Example:</b>  Router# show ip rsvp reservation detail	Displays RSVP-related receiver information currently in the database.
<b>Step 5</b>	<b>exit</b>  <b>Example:</b>  Router# exit	(Optional) Exits privileged EXEC mode and returns to user EXEC mode.

## Configuration Examples for RSVP Interface-Based Receiver Proxy

### Examples Configuring RSVP Interface-Based Receiver Proxy

The four-router network in the figure below contains the configurations for the examples shown in the following sections:

Figure 1: Sample Network with an Interface-Based Receiver Proxy Configured



### Configuring a Receiver Proxy on a Middle Router on Behalf of Tailend Routers

The following example configures a receiver proxy, also called a listener, on the middle router (Router 2) on behalf of the two tailend routers (Routers 3 and 4):

```
Router# configure terminal
Enter configuration commands, one per line. End with CNTL/Z.
Router(config)# interface gigabitEthernet 2/0/0
Router(config-if)# ip rsvp listener outbound reply
Router(config-if)# exit
Router(config)# interface gigabitEthernet 3/0/0
Router(config-if)# ip rsvp listener outbound reject
Router(config-if)# end
```

### Configuring PATH Messages from a Headend Router to Tailend Routers to Test the Receiver Proxy



**Note** If you do not have another headend router generating RSVP PATH messages available, configure one in the network for the specific purpose of testing RSVP features such as the receiver proxy. Note that these commands are not expected (or supported) in a final deployment.

The following example configures four PATH messages from the headend router (Router 1) to the tailend routers (Routers 3 and 4):

```
Router# configure terminal
Enter configuration commands, one per line. End with CNTL/Z.
Router(config)# ip rsvp sender-host 10.0.0.5 10.0.0.1 TCP 2 2 100 10
Router(config)# ip rsvp sender-host 10.0.0.5 10.0.0.1 UDP 1 1 100 10
Router(config)# ip rsvp sender-host 10.0.0.7 10.0.0.1 TCP 4 4 100 10
Router(config)# ip rsvp sender-host 10.0.0.7 10.0.0.1 UDP 3 3 100 10
Router(config)# end
```

## Examples Verifying RSVP Interface-Based Receiver Proxy

This section contains the following verification examples:

### Verifying the PATH Messages in the Database

The following example verifies that the PATH messages you configured are in the database:

```
Router# show ip rsvp sender
To          From          Pro DPort Sport Prev Hop      I/F      BPS
10.0.0.5    10.0.0.1      TCP 2      2      none none      none    100K
10.0.0.5    10.0.0.1      UDP 1      1      none none      none    100K
10.0.0.7    10.0.0.1      TCP 4      4      none none      none    100K
10.0.0.7    10.0.0.1      UDP 3      3      none none      none    100K
```

The following example verifies that a PATH message has been terminated by a receiver proxy configured to reply.



**Note** A receiver proxy that is configured to reject does not cause any state to be stored in the RSVP database; therefore, this **show** command does not display these PATH messages. Only one PATH message is shown.

```
Router# show ip rsvp sender detail
PATH:
Destination 10.0.0.5, Protocol_Id 17, Don't Police , DstPort 1
Sender address: 10.0.0.1, port: 1
Path refreshes:
  arriving: from PHOP 10.1.2.1 on Et0/0 every 30000 msecs
Traffic params - Rate: 100K bits/sec, Max. burst: 10K bytes
Min Policed Unit: 0 bytes, Max Pkt Size 2147483647 bytes
Path ID handle: 01000402.
Incoming policy: Accepted. Policy source(s): Default
Status: Proxy-terminated
Output on Ethernet2/0. Policy status: NOT Forwarding. Handle: 02000401
Policy source(s):
Path FLR: Never repaired
```

### Verifying the Running Configuration

The following example verifies the configuration for GigabitEthernet interface 2/0/0:

```
Router# show running-config interface gigabitEthernet 2/0/0
Building configuration...
Current configuration : 132 bytes
!
interface gigabitEthernet2/0/0
 ip address 172.16.0.1 255.0.0.0
 no cdp enable
 ip rsvp bandwidth 2000
 ip rsvp listener outbound reply
end
```

The following example verifies the configuration for GigabitEthernet interface 3/0/0:

```
Router# show running-config interface gigabitEthernet 3/0/0
Building configuration...
Current configuration : 133 bytes
!
interface gigabitEthernet3/0/0
 ip address 172.16.0.2 255.0.0.0
 no cdp enable
 ip rsvp bandwidth 2000
```

```
ip rsvp listener outbound reject
end
```

### Verifying the Listeners

The following example verifies the listeners (proxies) that you configured on the middle router (Router 2) on behalf of the two tailend routers (Routers 3 and 4):

```
Router# show ip rsvp listener
To          Protocol  DPort  Description      Action  OutIf
10.0.0.0    0         0      RSVP Proxy       reply  Et2/0
10.0.0.0    0         0      RSVP Proxy       reject Et3/0
```

### Verifying the Reservations

The following example displays reservations established by the middle router (Router 2) on behalf of the tailend routers (Routers 3 and 4) as seen from the headend router (Router 1):

```
Router# show ip rsvp reservation
To          From      Pro DPort Sport Next Hop      I/F      Fi Serv BPS
10.0.0.7    10.0.0.1 TCP 4      4      10.0.0.2      Gi1/0    FF RATE 100K
10.0.0.7    10.0.0.1 UDP 3      3      10.0.0.2      Gi1/0    FF RATE 100K
```

The following example verifies that a reservation is locally generated (proxied). Only one reservation is shown:

```
Router# show ip rsvp reservation detail
RSVP Reservation. Destination is 10.0.0.7, Source is 10.0.0.1,
  Protocol is UDP, Destination port is 1, Source port is 1
  Next Hop: 10.2.3.3 on GigabitEthernet2/0/0
  Reservation Style is Fixed-Filter, QoS Service is Guaranteed-Rate
  Resv ID handle: 01000405.
  Created: 09:24:24 EST Fri Jun 2 2006
  Average Bitrate is 100K bits/sec, Maximum Burst is 10K bytes
  Min Policed Unit: 0 bytes, Max Pkt Size: 0 bytes
  Status: Proxied
  Policy: Forwarding. Policy source(s): Default
```

### Verifying CAC on an Outbound Interface

The following example verifies that the proxied reservation performed CAC on the local outbound interface:

```
Router# show ip rsvp installed
RSVP: GigabitEthernet2/0/0 has no installed reservations
RSVP: GigabitEthernet3/0/0
BPS   To          From          Protoc DPort  Sport
100K  10.0.0.7    10.0.0.1      UDP    1      1
```

## Additional References

The following sections provide references related to the RSVP Interface-Based Receiver Proxy feature.



**Related Documents**

Related Topic	Document Title
QoS commands: complete command syntax, command modes, command history, defaults, usage guidelines, and examples	<i>Cisco IOS Quality of Service Solutions Command Reference</i>
QoS configuration tasks related to RSVP	"Configuring RSVP" module
Internet draft	<i>RSVP Proxy Approaches</i> , Internet draft, October 2006 [draft-lefaucheur-tsvwg-rsvp-proxy-00.txt]

**Standards**

Standard	Title
No new or modified standards are supported by this feature, and support for existing standards has not been modified by this feature.	--

**MIBs**

MIB	MIBs Link
No new or modified MIBs are supported by this feature, and support for existing MIBs has not been modified by this feature.	To locate and download MIBs for selected platforms, Cisco software releases, and feature sets, use Cisco MIB Locator found at the following URL:  <a href="http://www.cisco.com/go/mibs">http://www.cisco.com/go/mibs</a>

**RFCs**

RFC	Title
RFC 2205	Resource ReSerVation Protocol (RSVP)

**Technical Assistance**

Description	Link
The Cisco Support and Documentation website provides online resources to download documentation, software, and tools. Use these resources to install and configure the software and to troubleshoot and resolve technical issues with Cisco products and technologies. Access to most tools on the Cisco Support and Documentation website requires a Cisco.com user ID and password.	<a href="http://www.cisco.com/cisco/web/support/index.html">http://www.cisco.com/cisco/web/support/index.html</a>

## Feature Information for RSVP Interface-Based Receiver Proxy

The following table provides release information about the feature or features described in this module. This table lists only the software release that introduced support for a given feature in a given software release train. Unless noted otherwise, subsequent releases of that software release train also support that feature.

Use Cisco Feature Navigator to find information about platform support and Cisco software image support. To access Cisco Feature Navigator, go to [www.cisco.com/go/cfn](http://www.cisco.com/go/cfn). An account on Cisco.com is not required.

**Table 1: Feature Information for RSVP Interface-Based Receiver Proxy**

Feature Name	Releases	Feature Information
RSVP Interface-Based Receiver Proxy	Cisco IOS XE Release 2.6 Cisco IOS XE Release 3.8S	The RSVP Interface-Based Receiver Proxy feature lets you configure a proxy router by outbound interface instead of configuring a destination address for each flow going through the same interface.  The following commands were introduced or modified: <b>ip rsvp bandwidth</b> , <b>ip rsvp listener outbound</b> , <b>show ip rsvp listeners</b> , <b>show ip rsvp reservation</b> , <b>show ip rsvp sender</b> .  In Cisco IOS XE Release 3.8S, support was added for the Cisco ASR 903 Router.

## Glossary

**flow** --A stream of data traveling between two endpoints across a network (for example, from one LAN station to another). Multiple flows can be transmitted on a single circuit.

**PE router** --provider edge router. A router that is part of a service provider's network and is connected to a customer edge (CE) router.

**proxy** --A component of RSVP that manages all locally originated and terminated state.

**receiver proxy** --A configurable feature that allows a router to proxy RSVP RESV messages for local or remote destinations.

**RSVP** --Resource Reservation Protocol. A protocol for reserving network resources to provide quality of service guarantees to application flows.

set-top box--A computer that acts as a receiver and decodes the incoming signal from a satellite dish, a cable network, or a telephone line.