



PPP over Ethernet Client

The PPP over Ethernet Client feature provides PPP over Ethernet (PPPoE) client support on routers.

PPPoE is a commonly used application in the deployment of digital subscriber lines (DSLs). The PPP over Ethernet Client feature expands PPPoE functionality by providing support for PPPoE on the client and the server.

- [Prerequisites for PPP over Ethernet Client, on page 1](#)
- [Restrictions for PPP over Ethernet Client, on page 1](#)
- [Information About PPP over Ethernet Client, on page 2](#)
- [How to Configure PPP over Ethernet Client, on page 4](#)
- [Configuration Examples for the PPP over Ethernet Client, on page 14](#)
- [Additional References, on page 20](#)
- [Feature Information for PPP over Ethernet Client, on page 21](#)

Prerequisites for PPP over Ethernet Client

PPP connections must be established between two endpoints over a serial link.

Restrictions for PPP over Ethernet Client

The PPPoE client does not support the following:

- More than ten clients per customer premises equipment (CPE)
- Quality of service (QoS) transmission with queueing on the dialer interface
- Dial-on-demand
- Easy VPN
- Native IPv6
- PPPoE client over ATM permanent virtual circuit (PVC)
- You can configure a dial-pool-number on a physical interface or sub-interface using the **pppoe-client dial-pool-number** *pool-number* command.



Note The pool number being unique cannot be used to configure with the same number on any other interfaces.

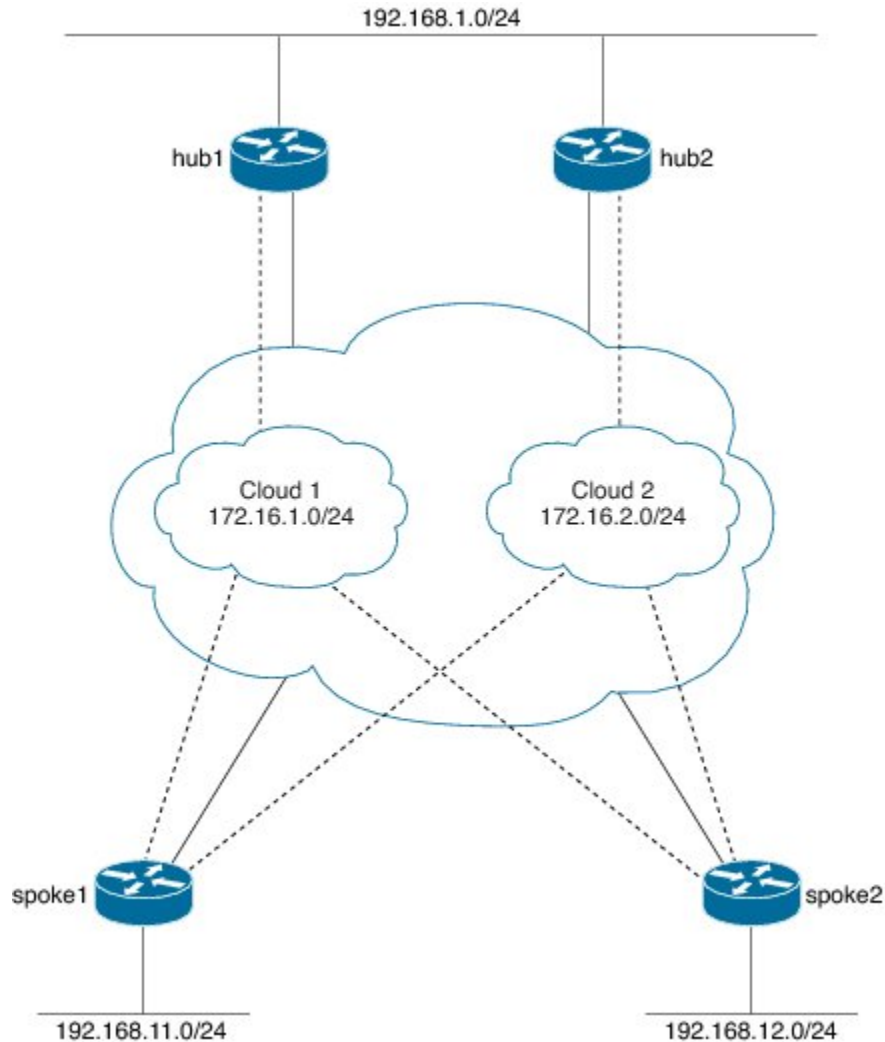
- Co-existence of the PPPoE client and server on the same device.
- Multilink PPP (MLP) on dialer interfaces
- Nonstop forwarding (NSF) with stateful switchover (SSO)
- When an IPv6 address is assigned to a subinterface from a server and if you remove the subinterface on client device, the IPv6 address might not be removed from the interface resulting in a ping failure after reconfiguring the subinterface. This is because you must shut the interface, first and then remove the subinterface.

Information About PPP over Ethernet Client

PPP over Ethernet Client Network Topology

The PPPoE Client feature provides PPPoE client support on routers at customer premises. Before the introduction of this feature, Cisco IOS XE software supported PPPoE only on the access server side. The figure below shows Dynamic Multipoint VPN (DMVPN) access to multiple hosts from the same PPPoE client using a common dialer interface and shared IPsec.

Figure 1: DMVPN Access to Multiple Hosts from the Same PPPoE Client



28/46/54

PPP over Ethernet Client Session Initiation

A PPPoE session is initiated by the PPPoE client. If the session has a timeout or is disconnected, the PPPoE client will immediately attempt to reestablish the session.

The following steps describe the exchange of packets that occurs when a PPPoE client initiates a PPPoE session:

1. The client broadcasts a PPPoE active discovery initiation (PADI) packet.
2. When the access concentrator receives a PADI packet that it can serve, it replies by sending a PPPoE active discovery offer (PADO) packet to the client.
3. Because the PADI packet was broadcast, the host may receive more than one PADO packet. The host looks through the PADO packets it receives and chooses one. The choice can be based on the access concentrator name or on the services offered. The host then sends a single PPPoE active discovery request (PADR) packet to the access concentrator that it has chosen.

4. The access concentrator responds to the PADR packet by sending a PPPoE active discovery session-confirmation (PADS) packet. At this point, a virtual access interface is created that will then negotiate PPP and the PPPoE session will run on this virtual access.

If a client does not receive a PADO packet for a PADI packet already received, the client sends out a PADI packet at predetermined intervals. That interval length is doubled for every successive PADI packet that does not evoke a response, until the interval reaches the configured maximum.

If PPP negotiation fails or the PPP line protocol is brought down for any reason, the PPPoE session and the virtual access will be brought down and the client will wait for a predetermined number of seconds before trying to establish another PPPoE session.

PPPoE Client over VLAN Interface

When configuring a PPPoE client on a VLAN interface, the device sends and receives PADO and PADI packets, but the PPPoE engine does not process PADO packets, and the PPPoE session does not come up. This enhancement provides the option to configure the PPPoE client over a VLAN, such as a Switched Virtual Interface (SVI), and establish the PPPoE session.

Figure 2: Sample Topology of a PPPoE Client and Server over a VLAN Interface



How to Configure PPP over Ethernet Client

Configuring a PPPoE Client

SUMMARY STEPS

1. **enable**
2. **configure terminal**
3. **interface** *type number*
4. **no ip address**
5. **pppoe enable group global**
6. **pppoe-client dial-pool-number** *number*
7. **no shutdown**
8. **exit**
9. **interface dialer** *number*
10. **dialer** *pool number*
11. **encapsulation** *type*
12. **ipv6 enable**
13. Do one of the following:
 - **ip address negotiated**

- **ipv6 address autoconfig**
 - **ipv6 dhcp client pd** *prefix-name*
14. **mtu** *size*
 15. **ppp authentication pap callin**
 16. **ppp pap sent-username** *username* **password** *password*
 17. **end**

DETAILED STEPS

	Command or Action	Purpose
Step 1	enable Example: Device> enable	Enables privileged EXEC mode. • Enter your password if prompted.
Step 2	configure terminal Example: Device# configure terminal	Enters global configuration mode.
Step 3	interface <i>type number</i> Example: Device(config)# interface GigabitEthernet 0/0/0	Configures an interface and enters interface configuration mode.
Step 4	no ip address Example: Device(config-if)# no ip address	Removes the IP address.
Step 5	pppoe enable group global Example: Device(config-if)# pppoe enable group global	Enables a PPPoE session on the Gigabit Ethernet interface.
Step 6	pppoe-client dial-pool-number <i>number</i> Example: Device(config-if)# pppoe-client dial-pool-number 1	Configures a PPPoE client and specifies dial-on-demand routing (DDR) functionality.
Step 7	no shutdown Example: Device(config-if)# no shutdown	Removes the IP address.
Step 8	exit Example: Device(config-if)# exit	Exits interface configuration mode and returns to global configuration mode.
Step 9	interface dialer <i>number</i> Example: Device(config)# interface dialer 1	Defines a dialer rotary group and enters interface configuration mode.

	Command or Action	Purpose
Step 10	dialer pool number Example: Device(config-if)# dialer pool 1	Specifies the dialing pool that the dialer interface uses to connect to a specific destination subnetwork.
Step 11	encapsulation type Example: Device(config-if)# encapsulation ppp	Specifies the encapsulation type. <ul style="list-style-type: none"> • Sets PPP as the encapsulation type.
Step 12	ipv6 enable Example: Device(config-if)# ipv6 enable	Enables IPv6 on the dialer interface.
Step 13	Do one of the following: <ul style="list-style-type: none"> • ip address negotiated • ipv6 address autoconfig • ipv6 dhcp client pd prefix-name Example: For IPv4 Device(config-if)# ip address negotiated Example: For IPv6 Device(config-if)# ipv6 address autoconfig Example: For DHCP IPv6 Device(config-if)# ipv6 dhcp client pd pd1	Specifies how the IP address is obtained for the dialer interface. This can be through one of the following as specified: <ul style="list-style-type: none"> • PPP/IP Control Protocol (IPCP) address negotiation • Dynamic Host Configuration Protocol (DHCP)
Step 14	mtu size Example: Device(config-if)# mtu 1492	Sets the maximum transmission unit (MTU) size.
Step 15	ppp authentication pap callin Example: Device(config-if)# ppp authentication pap callin	Enables at least one PPP authentication protocol and specifies the order in which protocols are selected on the interface.
Step 16	ppp pap sent-username username password password Example: Device(config-if)# ppp pap sent-username username1 password password1	Reenables remote Password Authentication Protocol (PAP) support for an interface and reuses the username and password parameters in the PAP authentication packet to the peer.
Step 17	end Example: Device(config-if)# end	Exits interface configuration mode and returns to privileged EXEC mode.

Configuring PPPoE on the Server

SUMMARY STEPS

1. **enable**
2. **configure terminal**
3. **username** *username* **password** *password*
4. **bba-group pppoe** *bba-group-name*
5. **virtual-template** *template-number*
6. **exit**
7. **interface loopback** *interface-number*
8. Do one of the following:
 - **ip address** *ip-address* *mask*
 - **ipv6 address** *ipv6-address* /*prefix*
9. **exit**
10. **interface** *type number*
11. Do one of the following:
 - **no ip address**
 - **no ipv6 address**
12. **pppoe enable group** *bba-group-name*
13. **exit**
14. **interface virtual-template** *number*
15. Do one of the following:
 - **ip unnumbered loopback** *number*
 - **ipv6 unnumbered loopback** *number*
16. **description** *description*
17. **mtu** *size*
18. Do one of the following:
 - **peer default ip address pool** *local-pool-name*
 - **peer default ipv6 address pool** *local-pool-name*
 - **ipv6 dhcp server** *dhcp-pool-name*
19. **ppp authentication** *protocol*
20. **exit**
21. **ipv6 dhcp pool** *dhcp-pool-name*
22. **prefix-delegation pool** *local-pool-name*
23. Do one of the following:
 - **ip local pool** *pool-name* [*low-ip-address* [*high-ip-address*]]
 - **ipv6 local pool** *pool-name* *ipv6-subnet-id* /*prefix* *prefix-length*
24. **end**

DETAILED STEPS

	Command or Action	Purpose
Step 1	enable Example: Device> enable	Enables privileged EXEC mode. <ul style="list-style-type: none">• Enter your password if prompted.
Step 2	configure terminal Example: Device# configure terminal	Enters global configuration mode.
Step 3	username <i>username</i> password <i>password</i> Example: Device(config)# username username1 password password1	Creates a PPPoE profile and enters BBA group configuration mode.
Step 4	bba-group pppoe <i>bba-group-name</i> Example: Device(config)# bba-group pppoe bba1	Creates a PPPoE profile and enters BBA group configuration mode.
Step 5	virtual-template <i>template-number</i> Example: Device(config-bba-group)# virtual-template 1	Creates a virtual template for a PPPoE profile with an identifying number to be used for cloning virtual access interfaces. <ul style="list-style-type: none">• The range is 1 to 4095.
Step 6	exit Example: Device(config-bba-group)# exit	Exits BBA group configuration mode and returns to global configuration mode.
Step 7	interface loopback <i>interface-number</i> Example: Device(config)# interface loopback 1	Creates a loopback interface that emulates an interface that is always up and enters interface configuration mode. <ul style="list-style-type: none">• The range is from 0 to 2147483647.
Step 8	Do one of the following: <ul style="list-style-type: none">• ip address <i>ip-address mask</i>• ipv6 address <i>ipv6-address /prefix</i> Example: Using an IPv4 address: Device(config-if)# ip address 192.2.0.2 255.255.255.0 Example: Using an IPv6 address: Device(config-if)# ipv6 address 2001:DB8:2::1/40	Assigns an IP address to the loopback interface.

	Command or Action	Purpose
Step 9	exit Example: Device(config-if)# exit	Exits interface configuration mode and enters global configuration mode.
Step 10	interface <i>type number</i> Example: Device(config)# interface GigabitEthernet 0/0/0	Configures an interface and enters interface configuration mode.
Step 11	Do one of the following: <ul style="list-style-type: none"> • no ip address • no ipv6 address Example: For an IPv4 address: Device(config-if)# no ip address Example: For an IPv6 address: Device(config-if)# no ipv6 address	Removes the IP address.
Step 12	pppoe enable group <i>bba-group-name</i> Example: Device(config-if)# pppoe enable group bba1	Enables PPPoE sessions on the Gigabit Ethernet interface.
Step 13	exit Example: Device(config-if)# exit	Exits interface configuration mode and returns to global configuration mode.
Step 14	interface virtual-template <i>number</i> Example: Device(config)# interface virtual-template 1	Creates a virtual template interface that can be configured and applied dynamically to create virtual access interfaces and enters interface configuration mode.
Step 15	Do one of the following: <ul style="list-style-type: none"> • ip unnumbered loopback <i>number</i> • ipv6 unnumbered loopback <i>number</i> Example: For IPv4: Device(config-if)# ip unnumbered loopback 1 Example: For IPv6: Device(config-if)# ipv6 unnumbered loopback 1	Enables IP processing on an interface without explicitly assigning an IP address to the interface. <ul style="list-style-type: none"> • The <i>type</i> argument is the interface on which the router has assigned an IP address. • The <i>number</i> argument is the number of the interface on which you want to enable IP processing.

	Command or Action	Purpose
Step 16	description <i>description</i> Example: Device(config-if)# description pppoe bbal	Adds a description to an interface configuration
Step 17	mtu <i>size</i> Example: Device(config-if)# mtu 1492	Sets the MTU size. <ul style="list-style-type: none"> • The range is from 64 to 9216.
Step 18	Do one of the following: <ul style="list-style-type: none"> • peer default ip address pool <i>local-pool-name</i> • peer default ipv6 address pool <i>local-pool-name</i> • ipv6 dhcp server <i>dhcp-pool-name</i> Example: For IPv4 addresses Device(config-if)# peer default ip address pool pool1 Example: For IPv6 addresses Device(config-if)# peer default ipv6 address pool pool1 Example: For DHCP assigned addresses: Device(config-if)# ipv6 dhcp server dhcpv6pool	Specifies an address pool to provide IP addresses for remote peers connecting to this interface.
Step 19	ppp authentication <i>protocol</i> Example: Device(config-if)# ppp authentication pap	Enables at least one PPP authentication protocol and specifies the order in which the protocols are selected on the interface.
Step 20	exit Example: Device(config-if)# exit	Exits interface configuration mode and returns to global configuration mode.
Step 21	ipv6 dhcp pool <i>dhcp-pool-name</i> Example: Device(config)# ipv6 dhcp pool dhcpv6pool	Creates a DHCP information pool and configures a local prefix pool from which prefixes can be delegated to clients.
Step 22	prefix-delegation pool <i>local-pool-name</i> Example: Device(config-dhcpv6)# prefix-delegation pool pool1	Specifies a local prefix pool.

	Command or Action	Purpose
Step 23	<p>Do one of the following:</p> <ul style="list-style-type: none"> • ip local pool <i>pool-name</i> [<i>low-ip-address</i> [<i>high-ip-address</i>]] • ipv6 local pool <i>pool-name</i> <i>ipv6-subnet-id</i> /<i>prefix</i> <i>prefix-length</i> <p>Example:</p> <p>For IPv4 addresses</p> <pre>Device(config)# ip local pool pool1 192.2.0.1 192.2.0.10</pre> <p>Example:</p> <p>For IPv6 addresses</p> <pre>Device(config)# ipv6 local pool pool1 2001:DB8:1200::/40 48</pre>	Configures a local pool of IP addresses to be used when a remote peer connects to a point-to-point interface.
Step 24	<p>end</p> <p>Example:</p> <pre>Device(config)# end</pre>	Exits global configuration mode and returns to privileged EXEC mode.

Configuring a PPPoE Client over a VLAN Interface

Perform this task to configure a PPPoE client over a VLAN interface.

SUMMARY STEPS

1. **enable**
2. **configure terminal**
3. **interface** *type number*
4. **switchport trunk allowed vlan** *vlan-list*
5. **switchport mode** {*access* | *trunk*}
6. **end**
7. **interface** *type number*
8. **no ip address**
9. **pppoe enable group global**
10. **pppoe-client dial-pool-number** *number*
11. **end**
12. **interface** *type number*
13. **ip address negotiated**
14. **encapsulation** *encapsulation-type*
15. **dialer pool** *number*
16. **pppoe pap sent-username** *username* **password** *password*
17. **end**

DETAILED STEPS

	Command or Action	Purpose
Step 1	enable Example: Device> enable	Enables privileged EXEC mode.
Step 2	configure terminal Example: Device# configure terminal	Enters global configuration mode.
Step 3	interface type number Example: Device(config)# interface GigabitEthernet 0/0/0	Configures an interface and enters interface configuration mode.
Step 4	switchport trunk allowed vlan vlan-list Example: Device(config-if)# switchport trunk allowed vlan 10	Sets the list of allowed VLANs that transmit traffic from this interface in tagged format when in trunking mode.
Step 5	switchport mode {access trunk} Example: Device(config-if)# switchport mode trunk	Enables switchport mode. To specify a trunking VLAN interface, use the switchport mode trunk command.
Step 6	end Example: Device(config-if)# end	Exits interface configuration mode and returns to privileged EXEC mode.
Step 7	interface type number Example: Device(config)# interface vlan 10	Configures an interface and enters interface configuration mode.
Step 8	no ip address Example: Device(config-if)# no ip address	Disables IP processing for an interface.
Step 9	pppoe enable group global Example: Device(config-if)# pppoe enable group global	Enables a PPPoE session on the Gigabit Ethernet interface.
Step 10	pppoe-client dial-pool-number number Example: Device(config-if)# pppoe-client dial-pool-number 2	Configures a PPPoE client and specifies dial-on-demand routing (DDR) functionality.
Step 11	end Example:	Exits interface configuration mode and returns to privileged EXEC mode.

	Command or Action	Purpose
	<code>Device(config-if)# end</code>	
Step 12	interface <i>type number</i> Example: <code>Device(config)# interface Dialer2</code>	Configures an interface and enters interface configuration mode.
Step 13	ip address negotiated Example: <code>Device(config-if)# ip address negotiated</code>	Specifies that the IP address for the interface is obtained through PPP or IPCP (IP Control Protocol) address negotiation.
Step 14	encapsulation <i>encapsulation-type</i> Example: <code>Device(config-if)# encapsulation ppp</code>	Sets the encapsulation method used by the interface. To set PPP as the encapsulation type, use the encapsulation ppp command.
Step 15	dialer pool <i>number</i> Example: <code>Device(config-if)# dialer pool 2</code>	Specifies the dialing pool for a dialer interface to connect to a specific destination subnetwork.
Step 16	pppoe pap sent-username <i>username</i> password <i>password</i> Example: <code>Device(config-if)# ppp pap sent-username cisco@cisco.com password cisco</code>	Enables remote PAP support for an interface and authenticates the request packet to the peer.
Step 17	end Example: <code>Device(config-if)# end</code>	Exits interface configuration mode and returns to privileged EXEC mode.

Verifying a PPPoE Client over a VLAN Interface

To verify that the PPPoE session is established, run the **show pppoe session** command. You should see the state type as UP.

```
ovld1# show pppoe session

      1 client session

Uniq ID  PPPoE  RemMAC          Port          VT  VA          State
      SID  LocMAC
      N/A   1      0000.aaaa.bbb0  V110         Di2 Vi2         UP
                        0101.xxx1.dccc          UP
```

Configuration Examples for the PPP over Ethernet Client

Example: Configuring a PPPoE Client

```
Device> enable
Device# configure terminal
Device(config)# interface GigabitEthernet 0/0/0
Device(config-if)# no ip address
Device(config-if)# pppoe enable
Device(config-if)# pppoe-client dial-pool-number 1
Device(config-if)# no shutdown
Device(config-if)# exit
Device(config)# interface dialer 1
Device(config-if)# mtu 1492
Device(config-if)# ip address negotiated
Device(config-if)# encapsulation ppp
Device(config-if)# dialer pool 1
Device(config-if)# ppp pap sent-username username1 password password1
Device(config-if)# end
```

Example: Configuring PPPoE on IPv4

Example: Server Configuration

```
Device> enable
Device# configure terminal
Device# username username1 password password1
Device(config)# bba-group pppoe bba1
Device(config-bba-group)# virtual-template 1
Device(config-bba-group)# exit
Device(config)# interface loopback 1
Device(config-if)# ip address 192.2.0.2 255.255.255.0
Device(config-if)# exit
Device(config)# interface GigabitEthernet 0/0/0
Device(config-if)# no ip address
Device(config-if)# negotiation auto
Device(config-if)# pppoe enable group bba1
Device(config-if)# no shutdown
Device(config-if)# exit
Device(config)# interface virtual-template 1
Device(config-if)# description pppoe bba1
Device(config-if)# mtu 1492
Device(config-if)# ip unnumbered loopback 1
Device(config-if)# peer default ip address pool pool1
Device(config-if)# ppp authentication pap
Device(config-if)# exit
Device(config)# ip local pool pool1 192.2.0.1 192.2.0.10
Device(config)# end
```

Example: Client Configuration

```

Device> enable
Device# configure terminal
Device(config)# interface GigabitEthernet 0/0/0
Device(config-if)# no ip address
Device(config-if)# pppoe enable
Device(config-if)# pppoe-client dial-pool-number 1
Device(config-if)# no shutdown
Device(config-if)# exit
Device(config)# interface dialer 1
Device(config-if)# mtu 1492
Device(config-if)# ip address negotiated
Device(config-if)# encapsulation ppp
Device(config-if)# dialer pool 1
Device(config-if)# ppp pap sent-username username1 password password1
Device(config-if)# end

```

Example: Configuring PPPoE on IPv6 using DHCP**Example: Server Configuration using DHCP**

Configure a username and a password for PPP client:

```
Host(config)# username username1 password password1
```

Create a PPP group GROUPA and associate it with a Virtual Template 1:

```

Host(config)# bba-group pppoe GROUPA
Host(config-bba-group)# virtual-template 1
Host(config-bba-group)# exit

```

Configure a loopback interface to be used on the Virtual Template 1:

```

Host(config)# interface loopback 1
Host(config-if)# ipv6 address 2001:DB8:2::1/40

%LINEPROTO-5-UPDOWN: Line protocol on Interface Loopback0, changed state to up
Host(config-if)# exit

```

Create a Virtual Template 1 and use the loopback interface as the IP address:

```

Host(config)# interface virtual-template 1
Host(config-if)# ipv6 unnumbered loopback 1
Host(config-if)# description pppoe GROUPA
Host(config-if)# mtu 1492

!Specify that PPP PAP authentication is used for authenticating connecting PPP
!clients
Host(config-if)# ppp authentication pap

!Enables DHCP for IPv6 service for the interface and specifies a pool for prefix
!delegation.
Host(config-if)# ipv6 dhcp server dhcpv6pool

Host(config-dhcp)# exit

```

Associate a physical interface with the PPP group GROUPA:

Example: Configuring PPPoE on IPv6 using DHCP

```
Host(config)# interface FastEthernet 0/0
Host(config-if)# no ip address
Host(config-if)# pppoe enable group GROUPE
Host(config-if)# no shutdown
Host(config-if)# exit
```

Create the local IPV6 address pool pool1 referred to in the Virtual Template 1

```
Host(config)# ipv6 local pool pool1 2001:DB8:1200::/40 48
```

Create a DHCP information pool and configure a local prefix pool from which prefixes can be delegated to clients.

```
Host(config)# ipv6 dhcp pool dhcpv6pool

!Specify local prefix pool
Host(config-dhcpv6)# prefix-delegation pool pool1
Host(config-dhcpv6)# end
```

Example: Client Configuration using DHCP

```
Device> enable
Device# configure terminal
Device(config)# hostname Client
```

Configure a physical interface and allocate it to a dialer pool. A logical dialer interface associated with the dialer pool can select a physical interface from this dialer pool when needed.

```
Client(config)# interface FastEthernet 0/0
Client(config-if)# no ip address
Client(config-if)# pppoe enable group global

!Allocate the physical interface to the dialer pool
Client(config-if)# pppoe-client dial-pool-number 1
Client(config-if)# no shutdown

%LINK-3-UPDOWN: Interface Virtual-Access1, changed state to up
%LINEPROTO-5-UPDOWN: Line protocol on Interface Virtual-Access1, changed state to up
%LINK-3-UPDOWN: Interface FastEthernet0/0, changed state to up
Client(config-if)# exit
```

Create the logical dialer interface and configure the pool used to pick physical interfaces

```
Client(config)# interface dialer 1

!Configure the pool used to pick physical interfaces.
Client(config-if)# dialer pool 1

!Sets the encapsulation method used by the interface to PPP.
Client(config-if)# encapsulation ppp
Client(config-if)# ipv6 enable

*Jun  2 23:51:36.455: %DIALER-6-BIND: Interface Vi2 bound to profile Di1
*Jun  2 23:51:36.459: %LINK-3-UPDOWN: Interface Virtual-Access2, changed state to up
*Jun  2 23:51:36.507: %DIALER-6-UNBIND: Interface Vi2 unbound from profile Di1
*Jun  2 23:51:36.519: %LINK-3-UPDOWN: Interface Virtual-Access2, changed state to down

!Enable Prefix delegation on the interface
Client(config-if)# ipv6 dhcp client pd dhcp_prefix_label

!Reduce MTU of the dialer interface to avoid unnecessary fragmentation caused by added
```


PPP headers.

```
Client(config-if)# mtu 1492
```

```
Client(config-if)# ppp authentication pap callin
```

!Configures the username and password that the client can use to authenticate with the server.

```
Client(config-if)# ppp pap sent-username username1 password password1
```

```
*Jun 2 23:52:20.999: %DIALER-6-BIND: Interface Vi2 bound to profile Di1
```

```
*Jun 2 23:52:21.003: %LINK-3-UPDOWN: Interface Virtual-Access2, changed state to up
```

```
*Jun 2 23:52:21.103: %LINEPROTO-5-UPDOWN: Line protocol on Interface Virtual-Access2, changed state to up
```

```
Client(config-if)# end
```

Example: Verifying the PPPoE connection

Observe the interfaces of the client:

```
Client#show ipv6 interface brief

FastEthernet0/0          [up/up]
    unassigned
Dialer1                  [up/up]
    FE80::205:FF:FE50:6C08
Virtual-Access1         [up/up]
    unassigned
```

Observe the PPPoE session on the client:

```
Client# show pppoe session

      1 client session

Uniq ID  PPPoE  RemMAC          Port          VT  VA          State
      SID  LocMAC
      N/A   324   0005.0050.9c08  Fa0/0        Di1 Vi2          UP
      0005.0050.6c08          UP
```

Observe the packets exchanged during the PPPoE session:

```
Client# show pppoe session packets

Total PPPoE sessions 1

SID      Pkts-In      Pkts-Out      Bytes-In      Bytes-Out
2846     0             6216          0             128136
```

Observe the DHCP session:

```
Server# show ipv6 dhcp binding

Client: FE80::205:FF:FE50:6C08
DUID: 00030001000500506C08
Username : unassigned
Interface : Virtual-Access1.1
IA PD: IA ID 0x000D0001, T1 302400, T2 483840
Prefix: 2001:DB8::/48
      preferred lifetime 604800, valid lifetime 2592000
      expires at Jul 01 2013 09:17 PM (2591979 seconds)

Server# show ipv6 dhcp pool
```

```
DHCPv6 pool: dhcpv6pool
  Prefix pool: pool1
              preferred lifetime 604800, valid lifetime 2592000
  Active clients: 1
```

Example: Configuring PPPoE on IPv6

Configuring PPPoE on the Server

```
Device> enable
Device# configure terminal
Device(config)# hostname Host
```

Configure a username and a password for PPP client:

```
Host# username username1 password password1
```

Create a PPP group GROUPA and associate it with a Virtual Template 1:

```
Host(config)# bba-group pppoe GROUPA

*Jun  1 21:30:55.587: %LINK-3-UPDOWN: Interface Virtual-Access1, changed state to up
*Jun  1 21:30:55.591: %LINEPROTO-5-UPDOWN: Line protocol on Interface Virtual-Access1,
changed state to up
Host(config-bba-group)# virtual-template 1
Host(config-bba-group)# exit
```

Configure a loopback interface to be used on the Virtual Template 1:

```
Host(config)# interface loopback 1
Host(config-if)# ipv6 address 2001:DB8:2::1/40

%LINEPROTO-5-UPDOWN: Line protocol on Interface Loopback0, changed state to up
Host(config-if)# exit
```

Create a Virtual Template 1 and use the loopback interface as the IP address:

```
Host(config)# interface virtual-template 1
Host(config-if)# ipv6 unnumbered loopback 1
Host(config-if)# description pppoe GROUPA
Host(config-if)# mtu 1492

!Configure the Virtual Template to hand out IP addresses from pool1
Host(config-if)# peer default ipv6 pool pool1

!Specify that PPP PAP authentication is used for authenticating connecting PPP clients
Host(config-if)# ppp authentication pap
Host(config-if)# exit
```

Associate a physical interface with the PPP group GROUPA:

```
Host(config)# interface FastEthernet 0/0
Host(config-if)# no ip address
Host(config-if)# pppoe enable group GROUPA
Host(config-if)# no shutdown
Host(config-if)# exit

*Jun  1 21:33:07.199: %LINK-3-UPDOWN: Interface FastEthernet0/0, changed state to up
*Jun  1 21:33:08.199: %LINEPROTO-5-UPDOWN: Line protocol on Interface FastEthernet0/0,
changed state to up
```

Create the IPV6 address pool pool1 referred to in the Virtual Template 1:

```
Host(config)# ipv6 local pool pool1 2001:DB8:1200::/40 48
Host(config)# end
```

Configuring PPPoE on the Client

```
Device> enable
Device# configure terminal
Device(config)# hostname Host
```

Configure a physical interface and allocate it to a dialer pool. A logical dialer interface associated with the dialer pool can select a physical interface from this dialer pool when needed.

```
Client(config)# interface FastEthernet 0/0
Client(config-if)# no ip address
Client(config-if)# pppoe enable group global
```

```
!Allocate the physical interface to the dialer pool
Client(config-if)# pppoe-client dial-pool-number 1
Client(config-if)# no shutdown
```

```
%LINK-3-UPDOWN: Interface Virtual-Access1, changed state to up
%LINEPROTO-5-UPDOWN: Line protocol on Interface Virtual-Access1, changed state to up
%LINK-3-UPDOWN: Interface FastEthernet0/0, changed state to up
Client(config-if)# exit
```

Create the logical dialer interface and configure the pool used to pick physical interfaces

```
Client(config)# interface dialer 1
```

```
!Configure the pool used to pick physical interfaces.
Client(config-if)# dialer pool 1
```

```
!Sets the encapsulation method used by the interface to PPP.
Client(config-if)# encapsulation ppp
Client(config-if)# ipv6 enable
```

```
*Jun  3 00:10:48.031: %DIALER-6-BIND: Interface Vi2 bound to profile Di1
*Jun  3 00:10:48.035: %LINK-3-UPDOWN: Interface Virtual-Access2, changed state to up
*Jun  3 00:10:48.083: %DIALER-6-UNBIND: Interface Vi2 unbound from profile Di1
*Jun  3 00:10:48.091: %LINK-3-UPDOWN: Interface Virtual-Access2, changed state to down
```

```
!Configure the PPP clients to get IP addresses for dialer interfaces by using
!PPP negotiations with the server.
Client(config-if)# ipv6 address autoconfig
```

```
!Reduce MTU of the dialer interface to avoid unnecessary fragmentation caused by added PPP
```

```
!headers
Client(config-if)# mtu 1492
Client(config-if)# ppp authentication pap callin
```

```
!Configures the username and password that the client can use to authenticate with the
!server.
Client(config-if)# ppp pap sent-username username1 password password1
```

```
*Jun  3 00:11:54.843: %DIALER-6-BIND: Interface Vi2 bound to profile Di1
*Jun  3 00:11:54.847: %LINK-3-UPDOWN: Interface Virtual-Access2, changed
state to up
*Jun  3 00:11:54.939: %LINEPROTO-5-UPDOWN: Line protocol on Interface
```

```
Virtual-Access2, changed state to up
Client(config-if)# end
```

Verifying the PPPoE connection

Observe the interfaces of the client:

```
Client# show ipv6 interface brief

FastEthernet0/0          [up/up]
    unassigned
Dialer1                  [up/up]
    FE80::205:FF:FE50:6C08
Virtual-Access1         [up/up]
    unassigned
```

Observe the PPPoE session on the client:

```
Client# show pppoe session

      1 client session

Uniq ID  PPPoE  RemMAC          Port          VT  VA          State
        SID  LocMAC
        N/A   324  0005.0050.9c08  Fa0/0        Di1 Vi2          UP
                   0005.0050.6c08                   UP
```

Observe the packets exchanged during the PPPoE session:

```
Client# show pppoe session packets

Total PPPoE sessions 1

SID      Pkts-In      Pkts-Out      Bytes-In      Bytes-Out
2846    0             6216          0             128136
```

Additional References

Related Documents

Related Topic	Document Title
Cisco IOS commands	
Broadband Access Aggregation and DSL commands	Cisco IOS Broadband Access Aggregation and DSL Command Reference

Technical Assistance

Description	Link
The Cisco Support and Documentation website provides online resources to download documentation, software, and tools. Use these resources to install and configure the software and to troubleshoot and resolve technical issues with Cisco products and technologies. Access to most tools on the Cisco Support and Documentation website requires a Cisco.com user ID and password.	http://www.cisco.com/cisco/web/support/index.html

Feature Information for PPP over Ethernet Client

The following table provides release information about the feature or features described in this module. This table lists only the software release that introduced support for a given feature in a given software release train. Unless noted otherwise, subsequent releases of that software release train also support that feature.

Use Cisco Feature Navigator to find information about platform support and Cisco software image support. To access Cisco Feature Navigator, go to www.cisco.com/go/cfn. An account on Cisco.com is not required.

Table 1: Feature Information for PPP over Ethernet Client

Feature Name	Releases	Feature Information
PPP over Ethernet Client for IPv6	Cisco IOS XE Release 3.9S	The PPP over Ethernet Client feature provides IPv6 support.
PPP over Ethernet Client	Cisco IOS XE Release 3.5S	This feature was introduced. The PPP over Ethernet Client feature provides PPPoE client support on routers.
PPPoE Client over VLAN Interface	Cisco IOS XE Release Bengaluru 17.6	This feature was introduced. The PPPoE Client over VLAN Interface feature allows users to establish a PPPoE session over a VLAN interface.

