



# Broadband High Availability In-Service Software Upgrade

---

The Broadband High Availability (HA) In-Service Software Upgrade (ISSU) feature ensures continuous operations of broadband access protocols during software upgrades, downgrades, and service enhancements.

- [Prerequisites for Broadband High Availability In-Service Software Upgrade, on page 1](#)
- [Restrictions for Broadband High Availability In-Service Software Upgrade, on page 1](#)
- [Information About Broadband High Availability In-Service Software Upgrade, on page 2](#)
- [How to Configure Broadband High Availability In-Service Software Upgrade, on page 4](#)
- [Configuration Examples for Broadband High Availability In-Service Software Upgrade, on page 10](#)
- [Additional References, on page 15](#)
- [Feature Information for Broadband High Availability In-Service Software Upgrade, on page 16](#)

## Prerequisites for Broadband High Availability In-Service Software Upgrade

The ISSU and nonstop forwarding (NSF) features must be enabled. For more information about In-Service Software Upgrade, see the "Performing an In Service Software Upgrade" module. For more information about NSF, see the "Configuring Nonstop Forwarding" module.

## Restrictions for Broadband High Availability In-Service Software Upgrade

- You can perform an ISSU across a major Cisco IOS XE release.
- You can perform an ISSU from a Cisco IOS XE release that supports ISSU capability.

# Information About Broadband High Availability In-Service Software Upgrade

## Feature Design of Broadband High Availability In-Service Software Upgrade

Prior to the implementation of the Broadband High Availability In-Service Software Upgrade feature, software upgrades typically required planned outages that took the router or network out of service. The Broadband High Availability In-Service Software Upgrade feature enables the service provider to maximize network availability and eliminate planned outages by allowing the Cisco IOS XE release to be upgraded without taking the router or network out of service. ISSU is a procedure, based on Cisco high availability (HA) architecture, whereby the Cisco IOS XE infrastructure accomplishes an upgrade while packet forwarding continues and broadband sessions are maintained. Cisco HA architecture is based on redundant Route Processors and the NSF and SSO features, such that ports stay active and calls do not drop, eliminating network disruption during upgrades.

The ISSU feature allows deployment of new features, hardware, services, and maintenance fixes in a procedure that is seamless to end users. A critical component of ISSU and Cisco HA technology is the cluster control manager (CCM) that manages session recreation and synchronization on the standby processor. The Broadband High Availability In-Service Software Upgrade feature allows the configuration of subscriber redundancy policies that tune the synchronization process. For more information see the [Configuring Subscriber Redundancy Policy for Broadband High Availability In-Service Software Upgrade, on page 4](#).

The Broadband High Availability In-Service Software Upgrade feature handles upgrades and downgrades, and supports the following:

- Upgrades from one software feature release to another, as long as both versions support the ISSU feature, for example, from Cisco IOS XE Release 2.2 to Cisco IOS XE Release 2.3.
- Upgrades from one software maintenance release to another, for example from Cisco IOS XE Release 2.2.1 to Cisco IOS XE Release 2.2.2.

The Broadband High Availability In-Service Software Upgrade feature works with other Cisco IOS XE HA features, NSF and SSO, to maintain broadband sessions.

## Performing an ISSU

For detailed information about HA and about performing an ISSU, see the following chapters in the [Cisco ASR 1000 Series Aggregation Services Routers Software Configuration Guide](#) :

- "High Availability Overview"
- "Cisco IOS XE Software Package Compatibility for ISSU"
- "In Service Software Upgrade (ISSU)"

## Supported Broadband Aggregation Protocols

The Broadband High Availability In-Service Software Upgrade feature supports the following broadband aggregation protocols described in the following sections:

## ISSU PPPoA

The Broadband High Availability In-Service Software Upgrade feature delivers ISSU capability for PPP over ATM (PPPoA) sessions during supported software upgrades, downgrades, and enhancements.

## ISSU L2TP

The L2TP HA Session SSO/ISSU on a LAC/LNS feature provides a generic SSO/ISSU mechanism for Layer 2 Tunneling Protocol (L2TP) on a Layer 2 Access Concentrator (LAC) and a Layer 2 Network Server (LNS). This feature preserves all fully established PPP and L2TP sessions during an SSO switchover or an ISSU upgrade or downgrade.

## ISSU PPPoE

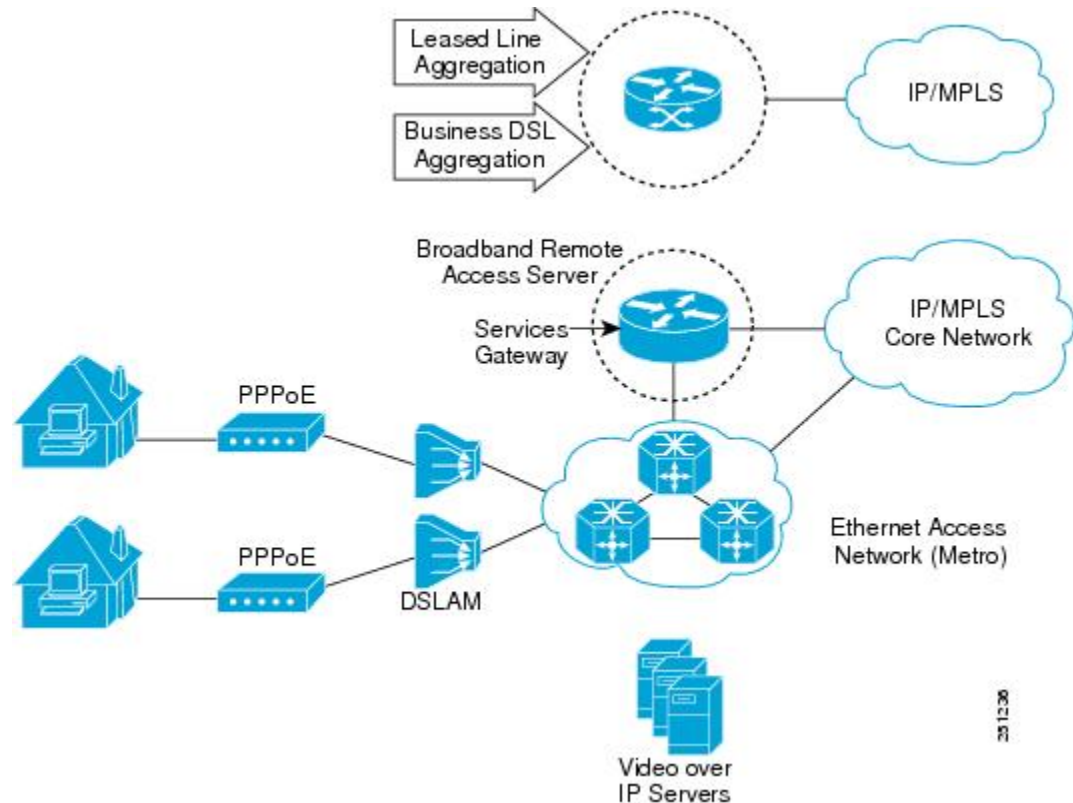
The Broadband High Availability In-Service Software Upgrade feature delivers ISSU capability for PPP over Ethernet (PPPoE) subscriber access sessions, including PPPoE, PPPoE over VLAN, and PPPoE over QinQ sessions, during supported software upgrades, downgrades, and enhancements.

## ISSU RA-MLPS VPN

The Broadband High Availability In-Service Software Upgrade feature delivers ISSU capability for PPPoA and PPPoE (PPPoX) sessions terminated into remote access (RA)-Multiprotocol Label Switching (MPLS) VPN or PPPoX into MPLS VPN during supported software upgrades, downgrades, and enhancements.

The figure below shows a typical broadband aggregation HA deployment with ISSU functionality.

**Figure 1: Broadband Aggregation High Availability Deployment**



## Benefits of Broadband High Availability In-Service Software Upgrade

- Eliminates network downtime for Cisco IOS XE software upgrades.
- Eliminates resource scheduling challenges associated with planned outages and late night maintenance windows.
- Accelerates deployment of new services and applications and allows faster implementation of new features, hardware, and fixes.
- Reduces operating costs due to outages while delivering higher service levels.
- Provides additional options for adjusting maintenance windows.
- Minimizes the impact of upgrades to service and allows for faster upgrades, resulting in higher availability.

## How to Configure Broadband High Availability In-Service Software Upgrade

### Configuring Subscriber Redundancy Policy for Broadband High Availability In-Service Software Upgrade

The Broadband High Availability In-Service Software Upgrade feature is enabled by default. This task configures subscriber redundancy policy for HA ISSU capability, allowing you to manage synchronization between HA active and standby processors.

#### SUMMARY STEPS

1. **enable**
2. **configure terminal**
3. **subscriber redundancy {bulk limit {cpu percentage delay *delay-time* [allow value] | time *seconds* | delay *delay-time* | dynamic limit cpu percentage delay *delay-time* [allow value] | rate sessions time}**
4. **exit**

#### DETAILED STEPS

	Command or Action	Purpose
Step 1	<b>enable</b> <b>Example:</b> Router> enable	Enables privileged EXEC mode. <ul style="list-style-type: none"> <li>• Enter your password if prompted.</li> </ul>
Step 2	<b>configure terminal</b> <b>Example:</b> Router# configure terminal	Enters global configuration mode.

	Command or Action	Purpose
Step 3	<p><b>subscriber redundancy</b> {<b>bulk limit</b> {<b>cpu percentage</b> <b>delay</b> <i>delay-time</i> [<b>allow value</b>]   <b>time</b> <i>seconds</i>   <b>delay</b> <i>delay-time</i>   <b>dynamic limit</b> <b>cpu percentage</b> <b>delay</b> <i>delay-time</i> [<b>allow value</b>]   <b>rate</b> <i>sessions time</i>}</p> <p><b>Example:</b></p> <pre>Router(config)# subscriber redundancy bulk limit cpu 75 delay 20 allow 30</pre>	(Optional) Configures subscriber redundancy policy.
Step 4	<p><b>exit</b></p> <p><b>Example:</b></p> <pre>Router(config)# exit</pre>	Exits global configuration mode.

## Verifying and Troubleshooting Subscriber Redundancy Policy for Broadband HA ISSU

To verify the subscriber redundancy policy configuration, use the **show running-config** command. Sample output is available in the [Configuration Examples for Broadband High Availability In-Service Software Upgrade, on page 10](#).

- Step 1, Step 2 and Step 3 are useful for troubleshooting the CCM synchronization component.
- Step 4, Step 5 and Step 6 are useful for reviewing PPPoX session statistics.
- Step 7 and Step 8 are useful for verifying the failure of any L2TP tunnels or VPDN groups.
- Step 9 and Step 10 are typically used by Cisco engineers for internal debugging purposes.

### SUMMARY STEPS

1. **show ccm clients**
2. **show ccm sessions**
3. **show ccm queues**
4. **show ppp subscriber statistics**
5. **show pppatm statistics**
6. **show pppoe statistics**
7. **show vpdn redundancy**
8. **show vpdn history failure**
9. **debug pppatm redundancy**
10. **debug pppoe redundancy**

### DETAILED STEPS

---

**Step 1**      **show ccm clients**

This command displays information about the CCM, the HA component that manages the capability to synchronize session launch on the standby processor of a redundant processor HA system. Use the **show ccm clients** command to display information about CCM clients.

**Example:**

```
Router# show ccm clients
CCM bundles sent since peer up:

      Sync Session          Sent          Queued for flow control
      Update Session       0             0
      Active Bulk Sync End  1             0
      Session Down         0             0
      ISSU client msgs     350           0
      Dynamic Session Sync  0             0
      Unknown msgs        0             0
Client events sent since peer up:
      PPP                   0
      PPPoE                 0
      VPDN FSP              0
      AAA                   0
      PPP SIP               0
      LTERM                 0
      AC                    0
      L2TP CC               0
      SSS FM                0
      IP SIP                0
      IP IF                 0
      COA                   0
      Auto Svc              0
      VPDN LNS              0
```

**Step 2** **show ccm sessions**

This command displays information about sessions managed by CCM.

**Example:**

```
Router# show ccm sessions

Global CCM state:          CCM HA Active - Dynamic Sync
Global ISSU state:        Compatible, Clients Cap 0x9EFFE
                          Current      Bulk Sent  Bulk Rcvd
                          -----
Number of sessions in state Down:      0           0           0
Number of sessions in state Not Ready: 0           0           0
Number of sessions in state Ready:     0           0           0
Number of sessions in state Dyn Sync:  0           0           0
Timeout: Timer Type   Delay      Remaining Starts   CPU Limit CPU Last
-----
Rate                 00:00:01 -           0           -           -
Dynamic CPU          00:00:10 -           0           90          0
Bulk CPU Lim         00:00:10 -           0           90          0
Bulk Time Li         00:00:01 -           0           -           -
RF Notif Ext         00:00:01 -           8           -           -
```

**Step 3** **show ccm queues**

Use the **show ccm queues** command to display queue statistics for CCM sessions on active and standby processors. This command is primarily used only by Cisco engineers for internal debugging of CCM processes.

**Example:**

```

Router# show ccm queues
11 Event Queues
      size  max    kicks    starts    false  suspends  ticks(ms)
3 CCM      0    8     82      83      1        0        20
Event Names
      Events  Queued  MaxQueued  Suspends  usec/evt  max/evt
1 3 Sync Session      0      0      0      0      0      0
2 3 Sync Client      0      0      0      0      0      0
3 3 Update            0      0      0      0      0      0
4 3 Session Down     0      0      0      0      0      0
5 3 Bulk Sync Begi    1      0      1      0      0      0
6 3 Bulk Sync Cont    2      0      2      0      0      0
7 3 Bulk Sync End     1      0      1      0      0      0
8 3 Rcv Bulk End      0      0      0      0      0      0
9 3 Dynamic Sync C    0      0      0      0      0      0
10 3 Going Active     0      0      0      0      0      0
11 3 Going Standby    0      0      0      0      0      0
12 3 Standby Presen   1      0      1      0      0      0
13 3 Standby Gone     0      0      0      0      0      0
15 3 CP Message      205     0      8      0     141     1000
16 3 Recr Session     0      0      0      0      0      0
17 3 Recr Update      0      0      0      0      0      0
18 3 Recr Sess Down   0      0      0      0      0      0
19 3 ISSU Session N    1      0      1      0      0      0
20 3 ISSU Peer Comm   0      0      0      0      0      0
21 3 Free Session     0      0      0      0      0      0
22 3 Sync Dyn Sessi   0      0      0      0      0      0
23 3 Recr Dyn Sessi   0      0      0      0      0      0
24 3 Session Ready    0      0      0      0      0      0
25 3 Pending Update   0      0      0      0      0      0
FSM Event Names      Events
0  Invalid            0
1  All Ready          0
2  Required Not Re    0
3  Update             0
4  Down               0
5  Error              0
6  Ready              0
7  Not Syncable       0
8  Recreate Down      0

```

#### Step 4 show ppp subscriber statistics

This command is useful for displaying events and statistics for PPP subscribers. Use the **show ppp subscriber statistics** command to display a cumulative count of PPP subscriber events and statistics, and to display an incremental count since the **clear ppp subscriber statistics** command was last issued.

#### Example:

```

Router# show ppp subscriber statistics
PPP Subscriber Events      TOTAL      SINCE CLEARED
Encap                      5          5
DeEncap                    0          0
CstateUp                   7          7
CstateDown                 4          4
FastStart                  0          0
LocalTerm                   7          7
LocalTermVP                0          0
MoreKeys                   7          7
Forwarding                  0          0
Forwarded                   0          0
SSSDisc                     0          0

```

SSMDisc	0	0
PPPDisc	0	0
PPPBindResp	7	7
PPPReneg	3	3
RestartTimeout	5	5
PPP Subscriber Statistics	TOTAL	SINCE CLEARED
IDB CSTATE UP	4	4
IDB CSTATE DOWN	8	8
APS UP	0	0
APS UP IGNORE	0	0
APS DOWN	0	0
READY FOR SYNC	8	8

**Step 5** **show pppatm statistics**

This command is useful for obtaining statistics for PPPoA sessions. Use the **show pppatm statistics** command to display a total count of PPPoA events since the **clear pppatm statistics** command was last issued.

**Example:**

```
Router# show pppatm statistics
4000 : Context Allocated events
3999 : SSS Request events
7998 : SSS Msg events
3999 : PPP Msg events
3998 : Up Pending events
3998 : Up Dequeued events
3998 : Processing Up events
3999 : Vaccess Up events
3999 : AAA unique id allocated events
3999 : No AAA method list set events
3999 : AAA gets nas port details events
3999 : AAA gets retrived attrs events
68202 : AAA gets dynamic attrs events
3999 : Access IE allocated events
```

**Step 6** **show pppoe statistics**

This command is useful for obtaining statistics and events for PPPoE sessions. Use the **show pppoe statistics** command to display a cumulative count of PPPoE events and statistics, and to display an incremental count since the last time the **clear pppoe statistics** command was issued.

**Example:**

```
Router# show pppoe statistics
PPP Subscriber Events      TOTAL      SINCE CLEARED
Encap                      5          5
DeEncap                    2          2
CstateUp                   0          0
CstateDown                 0          0
FastStart                  0          0
LocalTerm                  0          0
LocalTermVP                0          0
MoreKeys                   0          0
Forwarding                 0          0
Forwarded                  0          0
SSSDisc                    0          0
SSMDisc                    0          0
PPPDisc                    0          0
PPPBindResp                0          0
PPPReneg                   0          0
RestartTimeout             2          2
PPP Subscriber Statistics  TOTAL      SINCE CLEARED
```



```

IDB CSTATE UP          0          0
IDB CSTATE DOWN       0          0
APS UP                 0          0
APS UP IGNORE         0          0
APS DOWN              0          0
READY FOR SYNC        0          0
ASR1006-1#sh pppoe statis
ASR1006-1#sh pppoe statistics ?
| Output modifiers
|<br>
ASR1006-1#sh pppoe statistics
PPPoE Events          TOTAL          SINCE CLEARED
-----
INVALID               0          0
PRE-SERVICE FOUND    0          0
PRE-SERVICE NONE     0          0
SSS CONNECT LOCAL    0          0
SSS FORWARDING       0          0
SSS FORWARDED        0          0
SSS MORE KEYS        0          0
SSS DISCONNECT       0          0
SSS DISCONNECT ACK   0          0
CONFIG UPDATE        0          0
STATIC BIND RESPONSE 0          0
PPP FORWARDING       0          0
PPP FORWARDED        0          0
PPP DISCONNECT       0          0
PPP RENEGOTIATION    0          0
SSM PROVISIONED      0          0
SSM UPDATED          0          0
SSM ACCT STATS UPDATED 0          0
SSM DISCONNECT       0          0
                     0          0
PPPoE Statistics     TOTAL          SINCE CLEARED
-----
SSS Request           0          0
SSS Response Stale   0          0
SSS Disconnect       0          0
PPPoE Handles Allocated 0          0
PPPoE Handles Freed  0          0
Dynamic Bind Request 0          0
Static Bind Request  0          0
SSM Async Stats Request 0          0

```

**Step 7** **show vpdn redundancy**

Use this command to verify the failure of any L2TP tunnels.

**Example:**

```

Router# show vpdn redundancy

L2TP HA support: Silent Failover
L2TP HA Status:
  Checkpoint Messaging on: TRUE
  Standby RP is up:      TRUE
  Recv'd Message Count:  0
  L2TP Tunnels:          0/0/0/0 (total/HA-enabled/HA-est/resync)
  L2TP Sessions:         0/0/0 (total/HA-enabled/HA-est)
  L2TP Resynced Tunnels: 0/0 (success/fail)

```

**Step 8** **show vpdn history failure**

Use this command to verify the failure of any VPDN groups.

**Example:**

```
Router# show vpdn history failure

% VPDN user failure table is empty
```

**Step 9 debug pppatm redundancy**

Use the **debug pppatm redundancy** command to display CCM events and messages for PPPoA sessions on HA systems. This command is generally used only by Cisco engineers for internal debugging of CCM processes.

**Example:**

```
Router# debug pppatm redundancy
*Dec 3 02:58:40.784: PPPATM HA: [14000001]: Received the first SHDB
*Dec 3 02:58:40.784: PPPATM HA: [14000001]: Base hwidb not created > yet, queuing SHDB *Dec 3
02:58:40.784: PPPATM HA: [14000001]:
Requesting base vaccess creation
```

**Step 10 debug pppoe redundancy**

Use the **debug pppoe redundancy** command to display CCM events and messages for PPPoE sessions on HA systems. This command is generally used only by Cisco engineers for internal debugging of CCM processes.

**Example:**

```
Router# debug pppoe redundancy
Nov 22 17:21:11.327: PPPoE HA[0xBE000008] 9: Session ready to sync data
Nov 22 17:21:11.351: PPPoE HA[0xBE000008] 9: code = PADR, length = 58
Nov 22 17:21:11.351: PPPoE HA[0xBE000008] 9: code = SESSION ID, length = 2
Nov 22 17:21:11.351: PPPoE HA[0xBE000008] 9: code = SWITCH HDL, length = 4
Nov 22 17:21:11.351: PPPoE HA[0xBE000008] 9: code = SEGMENT HDL, length = 4
Nov 22 17:21:11.351: PPPoE HA[0xBE000008] 9: code = PHY SWIDB DESC, length = 20
Nov 22 17:21:11.351: PPPoE HA[0xBE000008] 9: code = VACCESS DESC, length = 28
Nov 22 17:21:11.351: PPPoE HA[0xBE000008] 9: Sync collection for ready events
Nov 22 17:21:11.351: PPPoE HA[0xBE000008] 9: code = PADR, length = 58
Nov 22 17:21:11.351: PPPoE HA[0xBE000008] 9: code = SESSION ID, length = 2
Nov 22 17:21:11.351: PPPoE HA[0xBE000008] 9: code = SWITCH HDL, length = 4
Nov 22 17:21:11.351: PPPoE HA[0xBE000008] 9: code = SEGMENT HDL, length = 4
Nov 22 17:21:11.351: PPPoE HA[0xBE000008] 9: code = PHY SWIDB DESC, length = 20
Nov 22 17:21:11.351: PPPoE HA[0xBE000008] 9: code = VACCESS DESC, length = 28
```

## Configuration Examples for Broadband High Availability In-Service Software Upgrade

### Example Subscriber Redundancy Policy for Broadband High Availability In-Service Software Upgrade

The following example shows how to configure the Broadband High Availability In-Service Software Upgrade feature:

```

enable
configure terminal
subscriber redundancy bulk limit cpu 75 delay 20 allow 30
end

```

The following is a sample configuration of PPPoX terminated into an RA-MPLS network with SSO. Commands that appear in the configuration task tables for this feature but that do not appear in the running configuration output are configured for their default settings.

```

hostname Router
!
boot-start-marker
boot system bootflash:packages.conf !
enable password cisco
!
aaa new-model
!
!
aaa authentication ppp default local
!
!
!
aaa session-id common
ppp hold-queue 8000
ip subnet-zero
no ip gratuitous-arps
no ip domain lookup
ip vrf vrf1
    rd 1:1
    route-target export 1:1
    route-target import 1:1
!
no ip dhcp use vrf connected
!
!
!
!
no subscriber policy recording rules

```

The following lines show subscriber redundancy policy configuration:

```

subscriber redundancy dynamic limit cpu 90 delay 10
subscriber redundancy bulk limit cpu 90 delay 10
subscriber redundancy rate 4000 1
subscriber redundancy delay 10
no mpls traffic-eng
mpls ldp graceful-restart
mpls ldp router-id Loopback100
no virtual-template snmp
no issu config-sync policy bulk prc
no issu config-sync policy bulk bem
!
redundancy mode sso
username cisco password 0 cisco
!
buffers small permanent 15000
buffers middle permanent 12000
buffers large permanent 1000
bba-group pppoe grp1
    virtual-template 1
!
bba-group pppoe grp2

```

```

    virtual-template 2
    !
    bba-group pppoe grp3
        virtual-template 3
    !
    bba-group pppoe grp4
        virtual-template 4
    !
    bba-group pppoe grp5
        virtual-template 5
    !
    bba-group pppoe grp7
        virtual-template 7
    !
    bba-group pppoe grp8
        virtual-template 8
    !
    bba-group pppoe grp6
        virtual-template 6
    !
    !
    interface Loopback0
        ip vrf forwarding vrf1
        ip address 172.16.1.1 255.255.255.255
    !
    interface Loopback100
        ip address 172.31.0.1 255.255.255.255
    !
    interface FastEthernet0/0/0
        ip address 192.168.2.26 255.255.255.0
        speed 100
        full-duplex
    !
    interface GigabitEthernet1/0/0
        no ip address
        load-interval 30
    !
    interface GigabitEthernet1/0/0.1
        encapsulation dot1Q 2
        pppoe enable group grp1
    !
    !
    interface GigabitEthernet1/0/0.2
        encapsulation dot1Q 2
        pppoe enable group grp2
    !
    !
    interface GigabitEthernet1/0/1
        no ip address
    !
    interface GigabitEthernet1/0/1.1
        encapsulation dot1Q 2
        pppoe enable group grp3
    !
    !
    interface GigabitEthernet1/0/1.2
        encapsulation dot1Q 2
        pppoe enable group grp4
    !
    !
    interface GigabitEthernet1/0/2
        no ip address
    !
    interface GigabitEthernet1/0/2.1

```

```
encapsulation dot1Q 2
pppoe enable group grp5
!
!
interface GigabitEthernet1/0/2.2
encapsulation dot1Q 2
pppoe enable group grp6
!
!
interface GigabitEthernet1/0/3
no ip address
!
interface GigabitEthernet1/0/3.1
encapsulation dot1Q 2
pppoe enable group grp7
!
!
interface GigabitEthernet1/0/3.2
encapsulation dot1Q 2
pppoe enable group grp8
!
interface GigabitEthernet7/0/3
no ip address
!
interface GigabitEthernet8/0/0
  mac-address 0011.0022.0033
  ip vrf forwarding vrf1
  ip address 10.1.1.2 255.255.255.0
  negotiation auto
!
interface GigabitEthernet8/1/0
  ip address 10.1.1.1 255.255.255.0
  negotiation auto
  mpls ip
!
interface Virtual-Template1
  ip vrf forwarding vrf1
  ip unnumbered Loopback0
  no logging event link-status
  peer default ip address pool pool1
  no snmp trap link-status
  keepalive 30
  ppp authentication pap
!
interface Virtual-Template2
  ip vrf forwarding vrf1
  ip unnumbered Loopback0
  no logging event link-status
  peer default ip address pool pool2
  no snmp trap link-status
  keepalive 30
  ppp authentication pap
!
interface Virtual-Template3
  ip vrf forwarding vrf1
  ip unnumbered Loopback0
  no logging event link-status
  peer default ip address pool pool3
  no snmp trap link-status
  keepalive 30
  ppp authentication pap
!
interface Virtual-Template4
  ip vrf forwarding vrf1
```

```

    ip unnumbered Loopback0
    no logging event link-status
    peer default ip address pool pool4
    no snmp trap link-status
    keepalive 30
    ppp authentication pap
!
interface Virtual-Template5
 ip vrf forwarding vrf1
 ip unnumbered Loopback0
 no logging event link-status
 peer default ip address pool pool5
 no snmp trap link-status
 keepalive 30
 ppp authentication pap
!
interface Virtual-Template6
 ip vrf forwarding vrf1
 ip unnumbered Loopback0
 no logging event link-status
 peer default ip address pool pool6
 no snmp trap link-status
 keepalive 30
 ppp authentication pap
!
interface Virtual-Template7
 ip vrf forwarding vrf1
 ip unnumbered Loopback0
 no logging event link-status
 peer default ip address pool pool7
 no snmp trap link-status
 keepalive 30
 ppp authentication pap
!
interface Virtual-Template8
 ip vrf forwarding vrf1
 ip unnumbered Loopback0
 no logging event link-status
 peer default ip address pool pool8
 no snmp trap link-status
 keepalive 30
 ppp authentication pap
!
router ospf 1
 log-adjacency-changes
 nsf
 network 10.1.1.0 0.0.0.255 area 0
 network 10.0.0.0 0.0.0.255 area 0
!
router bgp 1
 no synchronization
 bgp log-neighbor-changes
 bgp graceful-restart restart-time 120
 bgp graceful-restart stalepath-time 360
 bgp graceful-restart
 neighbor 10.0.0.3 remote-as 1
 neighbor 10.0.0.3 update-source Loopback100
 no auto-summary
!
 address-family vpnv4
 neighbor 10.0.0.3 activate
 neighbor 10.0.0.3 send-community extended
 exit-address-family
!

```

```

address-family ipv4 vrf vrf1
 redistribute connected
 redistribute static
 no auto-summary
 no synchronization
 exit-address-family
!
ip local pool pool2 10.1.1.1 10.1.16.160
ip local pool pool3 10.1.1.1 10.1.16.160
ip local pool pool4 10.1.1.1 10.1.16.160
ip local pool pool5 10.1.1.1 10.1.16.160
ip local pool pool6 10.1.1.1 10.1.16.160
ip local pool pool7 10.1.1.1 10.1.16.160
ip local pool pool8 10.1.1.1 10.1.16.160
ip classless !
!
no ip http server
!
!
arp 10.1.1.1 0020.0001.0001 ARPA
arp vrf vrf1 10.1.1.1 0020.0001.0001 ARPA !
!
!
line con 0
line aux 0
line vty 0 4
    password cisco
!
exception crashinfo file bootflash:crash.log !
end

```

## Additional References

### Related Documents

Related Topic	Document Title
Cisco IOS Broadband commands	Cisco IOS Broadband Access Aggregation and DSL Command Reference
High Availability	"High Availability Overview" chapter in the <a href="#">Cisco ASR 1000 Series Aggregation Services Routers Software Configuration Guide</a>
Performing an ISSU	The following chapters in the <a href="#">Cisco ASR 1000 Series Aggregation Services Routers Software Configuration Guide</a> : <ul style="list-style-type: none"> <li>• "Cisco IOS XE Software Package Compatibility for ISSU"</li> <li>• "In Service Software Upgrade (ISSU)"</li> </ul>
Broadband SSO	Broadband High Availability Stateful Switchover
Stateful switchover	Stateful Switchover
Cisco nonstop forwarding	Cisco Nonstop Forwarding
Layer 2 Tunnel Protocol	Layer 2 Tunnel Protocol Technology Brief

Related Topic	Document Title
Additional information about commands used in this document	<ul style="list-style-type: none"> <li>• <i>Cisco IOS Broadband Access Aggregation and DSL Command Reference</i></li> </ul>

### Standards

Standard	Title
No new or modified standards are supported by this feature, and support for existing RFCs has not been modified by this feature.	--

### MIBs

MIB	MIBs Link
No new or modified MIBs are supported by this feature, and support for existing MIBs has not been modified by this feature.	<p>To locate and download MIBs for selected platforms, Cisco IOS software releases, and feature sets, use Cisco MIB Locator found at the following URL:</p> <p><a href="http://www.cisco.com/go/mibs">http://www.cisco.com/go/mibs</a></p>

### RFCs

RFC	Title
No new or modified RFCs are supported by this feature, and support for existing RFCs has not been modified by this feature.	--

### Technical Assistance

Description	Link
The Cisco Support and Documentation website provides online resources to download documentation, software, and tools. Use these resources to install and configure the software and to troubleshoot and resolve technical issues with Cisco products and technologies. Access to most tools on the Cisco Support and Documentation website requires a Cisco.com user ID and password.	<a href="http://www.cisco.com/cisco/web/support/index.html">http://www.cisco.com/cisco/web/support/index.html</a>

## Feature Information for Broadband High Availability In-Service Software Upgrade

The following table provides release information about the feature or features described in this module. This table lists only the software release that introduced support for a given feature in a given software release train. Unless noted otherwise, subsequent releases of that software release train also support that feature.



Use Cisco Feature Navigator to find information about platform support and Cisco software image support. To access Cisco Feature Navigator, go to [www.cisco.com/go/cfn](http://www.cisco.com/go/cfn). An account on Cisco.com is not required.

**Table 1: Feature Information for Cisco IOS Broadband High Availability In-Service Software Upgrade**

Feature Name	Releases	Feature Information
ISSU-PPPoA	Cisco IOS XE Release 3.3S	<p>This feature was introduced on Cisco ASR 1000 Series Routers.</p> <p>This feature uses the ISSU support for PPPoA to ensure continuous operations of broadband access protocols during software upgrades.</p> <p>The following commands were introduced or modified:</p> <p><b>debug pppatm redundancy , debug pppoe redundancy, show pppoe redundancy, show pppatm redundancy, show pppatm statistics, subscriber redundancy</b></p>
ISSU--PPPoE	Cisco IOS XE Release 2.1 Cisco IOS XE Release 2.5	<p>This feature was introduced on Cisco ASR 1000 Series Routers.</p> <p>This feature uses the ISSU--PPPoE support to ensure continuous operations of broadband access protocols during software upgrades, downgrades, and service enhancements.</p> <p>The following commands were introduced or modified: <b>clear ppp subscriber statistics, clear pppoe statistics, debug pppoe redundancy, show ccm clients, show ccm sessions, show ppp subscriber statistics, show pppoe statistic, subscriber redundancy</b></p>

