



## Error Messages



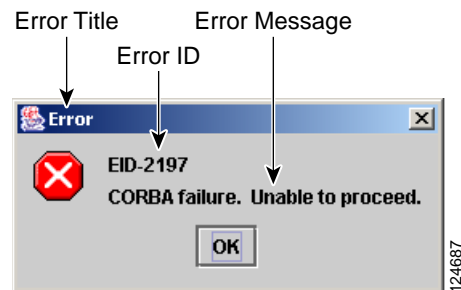
### Note

The terms "Unidirectional Path Switched Ring" and "UPSR" may appear in Cisco literature. These terms do not refer to using Cisco ONS 15xxx products in a unidirectional path switched ring configuration. Rather, these terms, as well as "Path Protected Mesh Network" and "PPMN," refer generally to Cisco's path protection feature, which may be used in any topological network configuration. Cisco does not recommend using its path protection feature in any particular topological network configuration.

This chapter lists the Cisco ONS 15454, 15454 SDH, 15600, 15327 and 15310 error messages. [Table 3-1](#) gives a list of all error message numbers, the messages, and a brief description of each message. The table lists two types of messages: error messages (EID-*nnnn*) and warning messages (WID-*nnnn*). Error messages are alerts that an unexpected or undesirable operation has occurred which either indicates the risk of loss of traffic or an inability to properly manage devices in the network. Warnings are alerts that the requested operation could lead to an error. Warnings are sometimes used to convey important information.

The error dialog box in [Figure 3-1](#) consists of three parts: the error title, error ID, and the error message.

**Figure 3-1** Error Dialog Box



**Table 3-1** Error Messages

Error or Warning ID	Error or Warning Message	Description
EID-0	Invalid error ID.	The error ID is invalid.
EID-1	Null pointer encountered in {0}.	Cisco Transport Controller (CTC) encountered a null pointer in the area described by the specified item.

Table 3-1 Error Messages (continued)

Error or Warning ID	Error or Warning Message	Description
EID-1000	The host name of the network element cannot be resolved to an address.	Refer to error or warning message text.
EID-1001	Unable to launch CTC due to applet security restrictions. Please review the installation instructions to make sure that the CTC launcher is given the permissions it needs. Note that you must exit and restart your browser in order for the new permissions to take effect.	Refer to error or warning message text.
EID-1002	The host name (e.g., for the network element) was successfully resolved to its address, but no route can be found through the network to reach the address.	Refer to error or warning message text.
EID-1003	An error was encountered while attempting to launch CTC. {0}	Unexpected exception or error while launching CTC from the applet.
EID-1004	Problem Deleting CTC Cache: {0} {1}	CTC encountered a problem deleting the cache.
EID-1005	An error occurred while writing to the {0} file.	CTC could not write the launching batch file.
EID-1006	The URL used to download {0} is malformed.	The URL used to download the Launcher.jar file is malformed.
EID-1007	An I/O error occurred while trying to download {0}.	An input or output exception was encountered when CTC tried to download the GUI launcher.
EID-1018	Password must contain at least 1 alphabetic, 1 numeric, and 1 special character (+, # or %). Password shall not contain the associated user-ID.	The password is invalid.
EID-1019	Could not create {0}. Please enter another filename.	CTC could not create the file due to an invalid filename.
EID-1020	Fatal exception occurred, exiting CTC. Unable to switch to the Network view.	CTC was unable to switch from the node or card view to the network view, and is now shutting down.
EID-1021	Unable to navigate to {0}.	Failed to display the indicated view—node or network.
EID-1022	A session cannot be opened right now with this slot. Most likely someone else (using a different CTC) already has a session opened with this slot. Please try again later.	Refer to error or warning message text.
EID-1023	This session has been terminated. This can happen if the card resets, the session has timed out, or if someone else (possibly using a different CTC) already has a session open with this slot.	Refer to error or warning message text.
EID-1025	Unable to create Help Broker.	CTC was unable to create the help broker for the online help.
EID-1026	Unable to locate HelpSet.	CTC was unable to locate the help set for the online help.

Table 3-1 Error Messages (continued)

Error or Warning ID	Error or Warning Message	Description
EID-1027	Unable to locate Help ID: {0}	CTC was unable to locate the help ID for the online help.
EID-1028	Error saving table. {0}	There was an error saving the specified table.
EID-1031	CTC cannot locate the online user manual files. The files may have been moved, deleted, or not installed. To install online user manuals, run the CTC installation wizard on the software or documentation CD.	Refer to error or warning message text.
EID-1032	CTC cannot locate Acrobat Reader. If Acrobat Reader is not installed, you can install the Reader using the CTC installation wizard provided on the software or documentation CD.	Refer to error or warning message text.
EID-1034	Unable to locate HelpSet when searching for Help ID "{0}".	CTC is unable to locate the subset {0} of the context sensitive help files.
EID-1035	CTC experienced an I/O error while working with the log files. Usually this means that the computer has run out of disk space. This problem may or may not cause CTC to stop responding. Ending this CTC session is recommended, but not required.	Refer to error or warning message text.
WID-1036	WARNING: Deleting the CTC cache may cause any CTC running on this system to behave in an unexpected manner.	Refer to error or warning message text.
EID-1037	Could not open {0}. Please enter another filename.	Refer to error or warning message text.
EID-1038	The file {0} does not exist.	Refer to error or warning message text.
EID-2001	No rolls selected. {0}	No rolls were selected for the bridge and roll.
EID-2002	The Roll must be completed or cancelled before it can be deleted.	You cannot delete the roll unless it has been completed or canceled.
EID-2003	Error deleting roll.	There was an error when CTC tried to delete the roll.
EID-2004	No IOS slot selected.	You did not select a Cisco IOS slot.
EID-2005	CTC cannot find the online help files for {0}. The files may have been moved, deleted, or not installed. To install online help, run the setup program on the software or documentation CDs.	CTC cannot find the online help files for the specified window. The files might have been moved, deleted, or not installed. To install online help, run the setup program on the software or documentation CDs.
EID-2006	Error editing circuit(s). {0} {1}.	An error occurred when CTC tried to open the circuit for editing.
EID-2007	Unable to save preferences.	CTC cannot save the preferences.
EID-2008	Unable to store circuit preferences: {0}	CTC cannot find the file needed to save the circuit preferences.
EID-2009	Unable to download package: {0}	Refer to error or warning message text.
EID-2010	Delete destination failed.	CTC could not delete the destination.

Table 3-1 Error Messages (continued)

Error or Warning ID	Error or Warning Message	Description
EID-2011	Circuit destroy failed.	CTC could not destroy the circuit.
EID-2012	Reverse circuit destroy failed.	CTC could not reverse the circuit destroy.
EID-2013	Circuit creation error. Circuit creation cannot proceed due to changes in the network which affected the circuit(s) being created. The dialog will close. Please try again.	Refer to error or warning message text.
EID-2014	No circuit(s) selected. {0}	You must select a circuit to complete this function.
EID-2015	Unable to delete circuit {0} as it has one or more rolls.	CTC cannot delete the circuit because it contains one or more rolls.
EID-2016	Unable to delete circuit.	There was an error deleting the circuit.
EID-2017	Error mapping circuit. {0}	There was an error mapping the circuit.
EID-2018	Circuit roll failure. The circuit has to be in the DISCOVERED state in order to perform a roll.	Refer to error or warning message text.
EID-2019	Circuit roll failure. Current version of CTC does not support bridge and roll on a VT tunnel or VT aggregation point circuit.	Refer to error or warning message text.
EID-2020	Circuit roll failure. The two circuits must have the same direction.	Refer to error or warning message text.
EID-2021	Circuit roll failure. The two circuits must have the same size.	Refer to error or warning message text.
EID-2022	Circuit roll failure. A maximum of two circuits can be selected for a bridge and roll operation.	Refer to error or warning message text.
EID-2023	Unable to create new user account.	Refer to error message text.
EID-2024	Node selection error.	There was an error during node selection.
EID-2025	This feature cannot be used. Verify that each of the endpoints of this circuit are running software that supports this feature.	Refer to error or warning message text. This error is generated from the AnsOpticsParamsPane to indicate that the selected ring type is not supported by the endpoints of the circuit. In the VLAN tab it indicates that the back-end spanning tree protocol (STP) disabling is not supported.
EID-2026	Unable to apply UPSR request. {0}	Error occurred while attempting to switch a path protection circuit away from a span.
EID-2027	Error deleting circuit drop.	CTC could not delete the circuit drop.
EID-2028	Error removing circuit node.	CTC could not remove the circuit node.
EID-2029	The requested operation is not supported.	The task you are trying to complete is not supported by CTC.
EID-2030	Provisioning error.	There was an error during provisioning.
EID-2031	Error adding node.	There was an error while adding a node.
EID-2032	Unable to rename circuit. {0}	CTC could not rename the circuit.

Table 3-1 Error Messages (continued)

Error or Warning ID	Error or Warning Message	Description
EID-2033	An error occurred during validation. {0}	There was an internal error while validating the user changes after the Apply button was pressed. This error can occur in the Edit Circuit dialog box or in the BLSR table in the shelf view (rare condition).
EID-2034	Unable to add network circuits: {0}	Refer to error or warning message text.
EID-2035	The source and destination nodes are not connected.	Refer to error or warning message text.
EID-2036	Cannot delete this {0}. LAN Access has been disabled on this node and this {0} is needed to access the node.	Refer to error or warning message text.
EID-2037	Application error. Cannot find attribute for {0}.	CTC cannot find an attribute for the specified item.
EID-2038	Invalid protection operation.	There was an invalid protection operation.
EID-2040	Please select a node first.	You must select a node before performing the task.
EID-2041	No paths are available on this link. Please make another selection.	Refer to error or warning message text.
EID-2042	This span is not selectable. Only the green spans with an arrow may be selected.	Refer to error or warning message text.
EID-2043	This node is not selectable. Only the source node and nodes attached to included spans (blue) are selectable. Selecting a selectable node will enable its available outgoing spans.	Refer to error or warning message text.
EID-2044	This link may not be included in the required list. Constraints only apply to the primary path. Each node may have a maximum of one incoming signal and one outgoing link.	Refer to error or warning message text.
EID-2045	This link may not be included in the required list. Only one outgoing link may be included for each node.	Refer to error or warning message text.
EID-2047	Error validating slot number. Please enter a valid value for the slot number.	Refer to error or warning message text.
EID-2048	Error validating port number. Please enter a valid value for the port number.	Refer to error or warning message text.
EID-2050	New circuit destroy failed.	CTC could not destroy the new circuit.
EID-2051	Circuit cannot be downgraded. {0}	The specified circuit cannot be downgraded.
EID-2052	Error during circuit processing.	There was an error during the circuit processing.
EID-2054	Endpoint selection error.	There was an error during the endpoint selection.

Table 3-1 Error Messages (continued)

Error or Warning ID	Error or Warning Message	Description
EID-2055	No endpoints are available for this selection. Please make another selection.	This error occurs in the circuit creation dialog only during a race condition that has incorrectly allowed entities without endpoints to be displayed in the combo boxes.
EID-2056	Communication error. {0}	An internal error occurred while synchronizing alarms with the nodes. Network Alarm tab.
EID-2059	Node deletion Error. {0}	There was an error during the node deletion.
EID-2060	No PCA circuits found.	CTC could not find any protection channel access (PCA) circuits for this task.
EID-2061	Error provisioning VLAN.	There was an error defining the VLAN.
EID-2062	Cannot delete VLAN. No VLAN(s) are selected. Please select a VLAN.	Cannot delete VLAN. No VLAN(s) are selected. Please select a VLAN.
EID-2063	Cannot delete default VLAN.	The selected VLAN is the default VLAN, and cannot be deleted.
EID-2064	Error deleting VLANs. {0}	There was an error deleting the VLAN.
EID-2065	Cannot import profile. Profile "{0}" exists in the editor and the maximum number of copies (ten) exists in the editor. Aborting the import. The profile has already been loaded eleven times.	Cannot import profile. The specified profile exists in the editor and the maximum number of copies (ten) exists in the editor. Aborting the import. The profile has already been loaded eleven times.
EID-2066	Unable to store profile. Error writing to {0}.	CTC encountered an error while trying to store the profile.
EID-2067	File write error. {0}	CTC encountered a file write error.
EID-2068	Unable to load alarm profile from node.	CTC encountered an error trying to load the alarm profile from the node.
EID-2069	File not found or I/O exception. {0}	Either the file was not found, or there was an input/output exception.
EID-2070	Failure deleting profile. {0}	The profile deletion failed.
EID-2071	Only one column may be highlighted.	Refer to error or warning message text.
EID-2072	Only one profile may be highlighted.	Refer to error or warning message text.
EID-2073	This column is permanent and may not be removed.	Refer to error or warning message text.
EID-2074	Select one or more profiles.	Refer to error or warning message text.
EID-2075	This column is permanent and may not be reset.	Refer to error or warning message text.
EID-2077	This column is permanent and may not be renamed.	Refer to error or warning message text.
EID-2078	At least two columns must be highlighted.	Refer to error or warning message text.
EID-2079	Cannot load alarmables into table. There are no reachable nodes from which the list of alarmables may be loaded. Please wait until such a node is reachable and try again.	Refer to error or warning message text.

Table 3-1 Error Messages (continued)

Error or Warning ID	Error or Warning Message	Description
EID-2080	Node {0} has no profiles.	The specified node does not have any profiles.
EID-2081	Error removing profile {0} from node {1}.	There was an error removing the specified profile from the node.
EID-2082	Cannot find profile {0} on node {1}.	CTC cannot find the specified profile from the specified node.
EID-2083	Error adding profile {0} to node {1}.	There was an error adding the specified profile to the specified node.
EID-2085	Invalid profile selection. No profiles were selected.	Refer to error or warning message text.
EID-2086	Invalid node selection. No nodes were selected.	Refer to error or warning message text.
EID-2087	No profiles were selected. Please select at least one profile.	Refer to error or warning message text.
EID-2088	Invalid profile name.	Refer to error or warning message text.
EID-2089	Too many copies of {0} exist. Please choose another name.	Too many copies of the specified item exist.
EID-2090	No nodes selected. Please select the node(s) on which to store the profile(s).	Refer to error or warning message text.
EID-2091	Unable to switch to node {0}.	CTC is unable to switch to the specified node.
EID-2092	General exception error.	CTC encountered a general exception error while trying to complete the task.
EID-2093	Not enough characters in name. {0}	There are not enough characters in the name.
EID-2094	Password and confirmed password fields do not match.	You must make sure the two fields have the same password.
EID-2095	Illegal password. {0}	The password you entered is not allowed.
EID-2096	The user must have a security level.	You must have an assigned security level to perform this task.
EID-2097	No user name specified.	You did not specify a user name.
EID-2099	Ring switching error.	There was an error during the ring switch.
EID-2100	Please select at least one profile to delete.	Refer to error or warning message text.
EID-2101	Protection switching error.	There was an error during the protection switch.
EID-2102	The forced switch could not be removed for some circuits. You must switch these circuits manually.	The forced switch could not be removed for some circuits. You must switch these circuits manually.
EID-2103	Error upgrading span.	There was an error during the span upgrade.
EID-2104	Unable to switch circuits back as one or both nodes are not reachable.	This error occurs during the path protection span upgrade procedure.
EID-2106	The node name cannot be empty.	You must supply a name for the node.

Table 3-1 Error Messages (continued)

Error or Warning ID	Error or Warning Message	Description
EID-2107	Error adding {0}, unknown host.	There was an error adding the specified item.
EID-2108	{0} is already in the network.	The specified item is already in the network.
EID-2109	The node is already in the current login group.	Refer to error or warning message text.
EID-2110	Please enter a number between 0 and {0}.	You must enter a number in the range between 0 and the specified value.
EID-2111	This node ID is already in use. Please choose another.	Refer to error or warning message text.
EID-2113	Cannot set extension byte for ring. {0}	CTC cannot set the extension byte.
EID-2114	Card communication failure. Error applying operation.	This error can occur during an attempt to apply a BLSR protection operation to a line.
EID-2115	Error applying operation. {0}	There was an error applying the specified operation.
EID-2116	Invalid extension byte setting. {0}	The extension byte set is invalid.
EID-2118	Cannot delete ring. There is a protection operation set. All protection operations must be clear for ring to be deleted.	Refer to error or warning message text.
EID-2119	Cannot delete {0} because a protection switch is in effect. Please clear any protection operations, make sure that the reversion time is not "never" and allow any protection switches to clear before trying again.	Refer to error or warning message text.
EID-2120	The following nodes could not be unprovisioned {0} Therefore you will need to delete this {1} again later.	The specified nodes could not be unprovisioned.
EID-2121	Cannot upgrade ring. {0}	CTC cannot upgrade the ring.
EID-2122	Inadequate ring speed for upgrade. Only {0} (or higher) {1} can be upgraded to 4-fiber.	You have selected an incorrect ring speed for upgrade. Only rings within the specified parameters can be upgraded to 4-fiber BLSR.
EID-2123	Verify that the following nodes have at least two in-service ports with the same speed as the 2-fiber {0}. The ports cannot serve as a timing reference, and they cannot have DCC terminations or overhead circuits. {1}	Nonupgradable nodes. Verify that the specified nodes have at least two IS-NR ports with the same speed as the 2-fiber BLSR. The specified ports cannot serve as a timing reference, and they cannot have data communications channel (DCC) terminations or overhead circuits.
EID-2124	You cannot add this span because it is connected to a node that already has the east and west ports defined.	Refer to error or warning message text.



Table 3-1 Error Messages (continued)

Error or Warning ID	Error or Warning Message	Description
EID-2125	You cannot add this span as it would cause a single card to host both the east span and the west span. A card cannot protect itself.	Refer to error or warning message text.
EID-2126	OSPF area error. {0}	There is an Open Shortest Path First (OSPF) area error.
EID-2127	You cannot add this span. It would cause the following circuit(s) to occupy different STS regions on different spans. {0} Either select a different span or delete the above circuit(s).	Refer to error or warning message text.
EID-2128	Illegal state error.	An internal error occurred while trying to remove a span from a BLSR.  This alarm occurs in the network-level BLSR creation dialog box.
EID-2129	This port is already assigned. The east and west ports must be different.	Refer to error or warning message text.
EID-2130	The ring ID value, {0}, is not valid. Please enter a valid number between 0 and 9999.	Refer to error or warning message text.
EID-2131	Cannot set reversion to INCONSISTENT.	You must select another reversion type.
EID-2135	I/O error. Unable to store overhead circuit preferences. {0}	Input/Output error. Unable to store overhead circuit preferences.
EID-2137	Circuit merge error. {0}	There was an error merging the circuits.
EID-2138	Cannot delete all destinations. Please try again.	Refer to error or warning message text.
EID-2139	Error updating destinations.	There was an error updating the circuit destinations.
EID-2143	No online help version selected. Cannot delete the online help book.	You cannot delete the online help.
EID-2144	Error deleting online help book(s). {0}	You cannot delete the online help.
EID-2145	Unable to locate a node with an IOS card.	Unable to locate a node with a Cisco IOS card.
EID-2146	Security violation. You may only logout your own account.	Refer to error or warning message text.
EID-2147	Security violation. You may only change your own account.	Refer to error or warning message text.
EID-2148	Security violation. You may not delete the account under which you are currently logged in.	Refer to error or warning message text.
WID-2149	There is nothing exportable on this view.	Refer to error or warning message text.
WID-2150	Node {0} is not initialized. Please wait and try again.	Refer to error or warning message text.
WID-2152	Spanning tree protection is being disabled for this circuit.	Refer to error or warning message text.
WID-2153	Adding this drop makes the circuit a PCA circuit.	Refer to error or warning message text.
WID-2154	Disallow creating monitor circuits on a port grouping circuit.	Refer to error or warning message text.

Table 3-1 Error Messages (continued)

Error or Warning ID	Error or Warning Message	Description
WID-2155	Only partial switch count support on some nodes. {0}	Refer to error or warning message text.
WID-2156	Manual roll mode is recommended for dual rolls. For auto dual rolls, please verify that roll to facilities are in service and error free.	Refer to error or warning message text.
WID-2157	Cannot complete roll(s). {0}	CTC cannot complete the roll(s).
EID-2158	Invalid roll mode. {0}	The selected roll mode is invalid.
EID-2159	Roll not ready for completion. {0}	The roll is not ready for completion.
EID-2160	Roll not connected. {0}	The selected roll is not connected.
EID-2161	Sibling roll not complete. {0}	The sibling roll is not complete.
EID-2162	Error during roll acknowledgement. {0}	There was an error during the roll acknowledgement.
EID-2163	Cannot cancel roll. {0}	CTC cannot cancel the roll.
EID-2164	Roll error. {0}	CTC encountered a roll error.
WID-2165	The MAC address of node {0} has been changed. All circuits originating from or dropping at this node will need to be repaired.	The MAC address of the specified node has been changed. All circuits originating from or dropping at this node need to be repaired.
WID-2166	Unable to insert node into the domain as the node is not initialized.	Refer to error or warning message text.
WID-2167	Insufficient security privilege to perform this action.	You have insufficient security privilege to perform this action.
WID-2168	Warnings loading{0}. {1}	CTC encountered warnings while loading the specified item.
WID-2169	One or more of the profiles selected do not exist on one or more of the nodes selected.	Refer to error or warning message text.
WID-2170	The profile list on node {0} is full. Please delete one or more profiles if you wish to add profile. {1}	The profile list on the specified node is full. Please delete one or more profiles if you wish to add the specified profile.
WID-2171	You have been logged out. Click OK to exit CTC.	Refer to error or warning message text.
WID-2172	The CTC CORBA (IIOP) listener port setting of {0} will be applied on the next CTC restart.	The specified CTC Common Object Request Broker Architecture (CORBA) Internet Inter-ORB Protocol (IIOP) listener port setting will be applied on the next CTC restart.

Table 3-1 Error Messages (continued)

Error or Warning ID	Error or Warning Message	Description
EID-2173	Port unavailable. The desired CTC CORBA (IIOP) listener port, {0}, is already in use or you do not have permission to listen on it. Please select an alternate port.	The port is unavailable. The desired CTC CORBA (IIOP) listener port is already in use or you do not have permission to listen on it. Please select an alternate port.
EID-2174	Invalid number entered. Please check it and try again.	You entered an invalid firewall port number.
WID-2175	Extension byte mismatch. {0}	There is a mismatch with the extension byte.
WID-2176	Not all spans have the same OSPF Area ID. This will cause problems with protection switching. To determine the OSPF Area for a given span, click on the span and the OSPF Area will be displayed in the pane to the left of the network map.	Refer to error or warning message text.
WID-2178	Only one edit pane can be opened at a time. The existing pane will be displayed.	Refer to error or warning message text.
WID-2179	There is no update as the circuit has been deleted.	Because the circuit has been deleted, there is no update for it.
EID-2180	CTC initialization failed in step {0}.	CTC initialization failed in the specified step.
EID-2181	This link may not be included as it originates from the destination.	Refer to error or warning message text.
EID-2182	The value of {0} is invalid.	The value of the specified item is invalid.
EID-2183	Circuit roll failure. Current version of CTC does not support bridge and roll on a VCAT circuit.	Refer to error or warning message text.
EID-2184	Cannot enable the STP on some ports because they have been assigned an incompatible list of VLANs. You can view the VLAN/Spanning Tree table or reassign ethernet ports VLANs.	Refer to error or warning message text.
EID-2185	Cannot assign the VLANs on some ports because they are incompatible with the Spanning Tree Protocol. You can view the VLAN/Spanning Tree table or reassign VLANs.	Refer to error or warning message text.
EID-2186	Software download failed on node {0}.	The software could not be downloaded onto the specified node.
EID-2187	The maximum length for the ring name that can be used is {0}. Please try again.	You must shorten the length of the ring name.
EID-2188	The nodes in this ring do not support alphanumeric IDs. Please use a ring ID between {0} and {1}.	The nodes in this ring do not support alphanumeric IDs. Please use a ring ID within the specified range.
EID-2189	TL1 keyword "all" can not be used as the ring name. Please provide another name.	Refer to error or warning message text.
EID-2190	Adding this span will cause the ring to contain more nodes than allowed.	Refer to error or warning message text.
EID-2191	Ring name must not be empty.	You must supply a ring name.
EID-2192	Cannot find a valid route for the circuit creation request.	Refer to error or warning message text.

Table 3-1 Error Messages (continued)

Error or Warning ID	Error or Warning Message	Description
EID-2193	Cannot find a valid route for the circuit drop creation request.	Refer to error or warning message text.
EID-2194	Cannot find a valid route for the roll creation request.	Refer to error or warning message text.
EID-2195	The circuit VLAN list cannot be mapped to one spanning tree. You can view the VLAN/Spanning Tree table or reassign VLANs.	Refer to error or warning message text.
EID-2196	Unable to relaunch the CTC. {0}	There is an error relaunching CTC.
EID-2197	CORBA failure. Unable to proceed. Please verify that the correct Java version is being used. Close and restart the CTC and browser applications.	There was a CORBA failure, and the task cannot proceed.
EID-2198	Unable to switch to the {0} view.	CTC is unable to switch to the specified view.
EID-2199	Login failed on {0} {1}	The login failed on the specified task.
EID-2200	CTC has detected a jar file deletion. The jar file was used to manage one or more nodes. This CTC session will not be able to manage those nodes and they will appear gray on the network map. It is recommended that you exit this CTC session and start a new one.	Refer to error or warning message text.
EID-2202	Intra-node circuit must have two sources to be Dual Ring Interconnect.	Intranode circuit must have two sources to be a dual ring interconnect (DRI).
EID-2203	No member selected.	You must select a member.
EID-2204	Number of circuits must be a positive integer	The number of circuits cannot be negative.
EID-2205	Circuit Type must be selected	You must select a circuit type.
EID-2206	Unable to autoselect profile! Please select profile(s) to store and try again.	Refer to error or warning message text.
EID-2207	You cannot add this span. Either the ring name is too big (i.e., ring name length is greater than {0}) or the endpoints do not support alphanumeric IDs.	You cannot add this span. Either the ring name is too big (that is, the ring name length is greater than the specified length) or the endpoints do not support alphanumeric IDs.
EID-2208	This is an invalid or unsupported JRE.	The version of Java Runtime Environment (JRE) is either invalid or unsupported.
EID-2209	The user name must be at least {0} characters long.	The user name must be at least the specified character length.
EID-2210	No package name selected.	You must select a package name.
EID-2211	No node selected for upgrade.	You must select a node for the upgrade.
EID-2212	Protected Line is not provisionable.	The protected line cannot be provisioned.
WID-2213	The current type or state of some drops does not allow the new circuit state of {0} to be applied to them indirectly.	The circuit state, specified by {0} cannot be applied to the selected drops.
EID-2214	The node is disconnected. Please wait till the node reconnects.	Refer to error or warning message text.
EID-2215	Error while leaving {0} page.	There was an error while leaving the specified page.

Table 3-1 Error Messages (continued)

Error or Warning ID	Error or Warning Message	Description
EID-2216	Error while entering {0} page.	There was an error entering the specified page.
EID-2217	Some conditions could not be retrieved from the network view	Refer to error or warning message text.
EID-2218	Bandwidth must be between {0} and {1} percent.	The bandwidth must be within the specified parameters.
EID-2219	Protection operation failed, XC loopback is applied on cross-connection.	Protection operation failed; a cross-connect (XC) loopback will be applied on cross-connection.
EID-2220	The tunnel status is PARTIAL. CTC will not be able to change it. Please try again later	Refer to error or warning message text.
EID-2221	Cannot find a valid route for the unprotected to UPSR upgrade request.	Refer to error or warning message text.
EID-2222	One or more of the following nodes are currently part of a 4-fiber {0}. Only a single 4-fiber {0} is supported per node. {1}	The nodes, specified by {1}, are already part of a 4-fiber ring type, specified by {0}.
EID-2223	Only one circuit can be upgraded at a time.	Refer to error or warning message text.
EID-2224	This link may not be included as it terminates on the source.	Refer to error or warning message text.
EID-2225	No valid signal while trying to complete the roll. (0)	Refer to error or warning message text.
EID-2320	This VCAT circuit does not support deletion of its member circuits.	Refer to error or warning message text.
EID-2321	Error deleting member circuits. {0}	Refer to error or warning message text.
WID-2322	Not all cross-connects from selected circuits could be merged into the current circuit. They may appear as partial circuits.	Refer to error or warning message text.
EID-2323	Circuit roll failure. Current version of CTC does not support bridge and roll on a DRI protected circuit.	Refer to error or warning message text.
EID-2324	Circuit upgrade error. {0}	Refer to error or warning message text.
EID-2325	You have failed {0} times to unlock this session. CTC will exit after you click OK or close this dialog box.	The maximum amount of attempts to unlock this session has been reached.
WID-2326	Current version of CTC does not support bridge and roll on circuits, which are entirely created by TL1. To continue with bridge and roll in CTC, selected circuits will be ungraded.  CAUTION: Once circuits are upgraded, future bridge and roll on the circuits can only be done in CTC.  OK to upgrade selected circuits and continue bridge and roll operation?	Refer to error or warning message text.

Table 3-1 Error Messages (continued)

Error or Warning ID	Error or Warning Message	Description
WID-2327	Current version of CTC does not support bridge and roll on circuits, which are partially created by TL1. To continue with bridge and roll in CTC, selected circuits must be ungraded.  CAUTION: Once circuits are upgraded, future bridge and roll on the circuits can only be done in CTC.  OK to upgrade selected circuits and continue bridge and roll operation?	Refer to error or warning message text.
EID-2328	Circuit reconfigure error. {0}	Refer to error or warning message text.
EID-2329	{0} of {1} circuits could not be successfully created.	Refer to error or warning message text.
EID-2330	Circuit verification: selected {0} invalid! {1}	The selected item, specified by {0}, is invalid as per the details, specified in {1}.
EID-2331	Deleting {0} may be service affecting.	Refer to error or warning message text.
EID-2332	Hold-off timer validation error in row [0]. {1} hold-off timer for {2} must be between {3}-10,000 ms, in steps of 100 ms.	Refer to error or warning message text.
EID-3001	An Ethernet RMON threshold with the same parameters already exists. Please change one or more of the parameters and try again.	An Ethernet remote monitoring (RMON) threshold with the same parameters already exists. Please change one or more of the parameters and try again.
EID-3002	Error retrieving defaults from the node: {0}	There was an error retrieving the defaults from the specified node.
EID-3003	Cannot load file {0}.	CTC cannot load the specified file.
EID-3004	Cannot load properties from the node	Refer to error or warning message text.
EID-3005	Cannot save NE Update values to file {0}	CTC cannot save the network element (NE) update values to the specified file.
EID-3006	Cannot load NE Update properties from the node	Refer to error or warning message text.
EID-3007	Provisioning Error for {0}	There was a provisioning error for the specified item.
EID-3008	Not a valid Card	You cannot perform DWDM automatic node setup (ANS) from the Card view. Please navigate to the Node view and try again.
EID-3009	No {0} selected	No item selected.
EID-3010	Unable to create bidirectional optical link	Refer to error or warning message text.
EID-3011	The file {0} doesn't exist or cannot be read.	The specified file does not exist or cannot be read.
EID-3012	The size of {0} is zero.	The size of the item is zero.
EID-3013	{0} encountered while restoring database.	The specified item was encountered while restoring the database (DB).

Table 3-1 Error Messages (continued)

Error or Warning ID	Error or Warning Message	Description
EID-3014	Job terminated, {0} was encountered.	The job terminated because the specified item was encountered.
EID-3015	{0} encountered while performing DB backup.	The specified item was encountered while performing the DB backup.
EID-3016	Invalid subnet address.	Refer to error or warning message text.
EID-3017	Subnet address already exists.	Refer to error or warning message text.
EID-3018	Standby TSC not ready.	The standby Timing and Shelf Control card (TSC) not ready.
EID-3019	Incomplete internal subnet address.	There is an incomplete internal subnet address.
EID-3020	TSC One and TSC Two subnet addresses cannot be the same.	Refer to error or warning message text.
EID-3021	An error was encountered while retrieving the diagnostics: {0}	CTC encountered an error.
EID-3022	Requested action not allowed.	The requested action is not allowed.
EID-3023	Unable to retrieve low order cross connect mode.	Refer to error or warning message text.
EID-3024	Unable to switch low order cross connect mode.	Refer to error or warning message text.
EID-3025	Error while retrieving thresholds.	The was an error retrieving the thresholds.
EID-3026	Cannot modify send DoNotUse.	CTC cannot modify the Send DoNotUse field.
EID-3027	Cannot modify SyncMsg.	CTC cannot modify the SyncMsg field.
EID-3028	Cannot change port type.	CTC cannot change the port type.
EID-3029	Unable to switch to the byte because an overhead change is present on this byte of the port.	Refer to error or warning message text.
EID-3031	Error hard-resetting card.	There was an error hard-resetting card.
EID-3032	Error resetting card.	There was an error resetting the card.
EID-3033	The lamp test is not supported on this shelf.	Refer to error or warning message text.
EID-3035	The cross connect diagnostics cannot be performed	Refer to error or warning message text.
EID-3036	The cross connect diagnostics test is not supported on this shelf.	The cross-connect diagnostics test is not supported on this shelf.
EID-3037	A software downgrade cannot be performed to the selected version while a SSXC card is inserted in this shelf. Please follow the steps to replace the SSXC with a CXC card before continuing the software downgrade.	A software downgrade cannot be performed to the selected version while a Single-Shelf Cross-Connect (SSXC) card is inserted in this shelf. Please follow the steps to replace the SSXC with a Core Cross-Connect card (CXC) card before continuing the software downgrade.
EID-3038	A software downgrade cannot be performed at the present time.	Refer to error or warning message text.
EID-3039	Card change error.	There was a card change error.
EID-3040	Invalid card type.	The card type is invalid.

Table 3-1 Error Messages (continued)

Error or Warning ID	Error or Warning Message	Description
EID-3041	Error applying changes.	There was an error applying the changes.
EID-3042	The flow control low value must be less than the flow control high value for all ports in the card.	Refer to error or warning message text.
EID-3043	Error while retrieving line info settings.	Refer to error or warning message text.
EID-3044	Error while retrieving line admin info settings.	Refer to error or warning message text.
EID-3045	Error while retrieving transponder line admin info settings.	Refer to error or warning message text.
EID-3046	The flow control water mark value must be between {0} and {1}, inclusive.	The flow control watermark value must be between the specified values.
EID-3047	The file named {0} could not be read. Please check the name and try again.	The specified file could not be read. Please check the name and try again.
EID-3048	There is no IOS startup config file available to download.	There is no Cisco IOS startup configuration file available to download.
EID-3049	There is an update in progress so the download cannot be done at this time.	Refer to error or warning message text.
EID-3050	An exception was caught trying to save the file to your local file system.	Refer to error or warning message text.
EID-3051	The maximum size for a config file in bytes is: {0}	The maximum size for a configuration file in bytes is the value specified in the message.
EID-3052	There was an error saving the config file to the TCC.	Refer to error or warning message text.
EID-3053	The value of {0} must be between {1} and {2}	The value of the item must be between the specified values.
EID-3054	Cannot remove provisioned input/output ports or another user is updating the card, please try later.	Cannot remove provisioned input or output ports or another user is updating the card. Please try later.
EID-3055	Cannot create soak maintenance pane.	CTC cannot create Soak Maintenance tab.
EID-3056	Cannot save defaults to file {0}	Cannot save defaults to the specified file.
EID-3057	Cannot load default properties from the node.	Refer to error or warning message text.
EID-3058	File {0} does not exist.	The specified file does not exist.
EID-3059	Error encountered while refreshing.	There was an error in refreshing.
EID-3060	The ALS Recovery Pulse Interval must be between {0} seconds and {1} seconds.	The automatic laser shutdown (ALS) Recovery Interval must be between 100 seconds and 300 seconds.
EID-3061	The ALS Recovery Pulse Duration must be between {0} seconds and {1} seconds.	The ALS Recovery Pulse Width must be between 2.00 seconds and 100.0 seconds.
EID-3062	Error encountered while setting values.	Refer to error or warning message text.
EID-3063	Unable to retriever bridge port settings.	Refer to error or warning message text.
EID-3064	Not a G1000 Card.	This card is not a G1000-4 card.



Table 3-1 Error Messages (continued)

Error or Warning ID	Error or Warning Message	Description
EID-3065	An error was encountered while attempting to create RMON threshold: {0}	You must wait some time before you try again.
EID-3066	Minimum sample period must be greater than or equal to 10.	Refer to error or warning message text.
EID-3067	Rising Threshold: Invalid Entry, valid range is from 1 to {0}	This is an invalid rising threshold entry. The valid range is from 1 to the specified value.
EID-3068	Falling Threshold: Invalid Entry, valid range is from 1 to {0}	This is an invalid falling threshold entry. The valid range is from 1 to the specified value.
EID-3069	Rising threshold must be greater than or equal to falling threshold.	Refer to error or warning message text.
EID-3070	Error in data for ports {0} Exactly one VLAN must be marked untagged for each port. These changes will not be applied.	There was an error in the data for the specified ports. Exactly one VLAN must be marked Untagged for each port. These changes will not be applied.
EID-3071	Get Learned Address	Unable to retrieve the learned MAC address from the NE.
EID-3072	Clear Learned Address	Failure attempting to clear the learned MAC address from a specific card or Ether group.
EID-3073	Clear Selected Rows	Failure attempting to clear the learned MAC address from a specific card or Ether group.
EID-3074	Clear By {0}	Error encountered trying to clear the learned MAC address from either a VLAN or a port.
EID-3075	At least one row in param column needs to be selected.	Refer to error or warning message text.
EID-3076	CTC lost its connection with this node. The NE Setup Wizard will exit.	Refer to error or warning message text.
EID-3077	No optical link selected.	Refer to error or warning message text.
EID-3078	Unable to create optical link.	Refer to error or warning message text.
EID-3079	Cannot apply defaults to node: {0}	Cannot apply defaults to the specified node.
EID-3080	Cannot go to the target tab {0}	Cannot go to the target tab.
EID-3081	Port type can't be changed.	Refer to error or warning message text.
EID-3082	Cannot modify the {0} extension byte.	Cannot modify the extension byte.
EID-3083	Error while retrieving stats.	Error in getting statistics.
EID-3084	Error encountered while trying to retrieve laser parameters for {0}	There is no card, or there was an internal communications error when attempting to get the laser statistics from the card.
EID-3085	No OSC Terminations selected	Refer to error or warning message text.
EID-3086	One or more Osc terminations could not be created.	Refer to error or warning message text.
EID-3087	OSC termination could not be edited.	Refer to error or warning message text.

Table 3-1 Error Messages (continued)

Error or Warning ID	Error or Warning Message	Description
EID-3088	No {0} card to switch.	No card of the specified type to switch.
EID-3089	Cannot use/change {0} state when {1} is failed or missing.	Cannot use or change the specified state when it is failed or missing.
EID-3090	Cannot perform operation as {0} is {1}LOCKED_ON/LOCKED_OUT.	Cannot perform operation.
EID-3091	Cannot perform the operation as protect is active.	Refer to error or warning message text.
EID-3092	Invalid service state. The requested action cannot be applied.	Refer to error or warning message text.
EID-3093	Cannot perform the operation as duplex pair is {0}locked.	Refer to error or warning message text.
EID-3094	Cannot perform the operation as no XC redundancy is available.	Refer to error or warning message text.
EID-3095	Deletion failed since the circuit is in use	Refer to error or warning message text.
WID-3096	Internal communication error encountered while trying to retrieve laser parameters. This can happen when equipment is not present or when equipment is resetting. Check the equipment state and try to refresh the values again.	Refer to error or warning message text.
EID-3097	The ring termination is in use.	Refer to error or warning message text.
EID-3098	No ring terminations selected.	Refer to error or warning message text.
EID-3099	Sorry, entered key does not match existing authentication key.	The entered key does not match existing authentication key.
EID-3100	Error encountered during authentication.	There was an error in authentication.
EID-3101	DCC Metric is not in the range 1 - 65535.	The DCC metric is not in the range 1 to 65535.
EID-3102	Invalid DCC Metric	There was an invalid DCC metric.
EID-3103	Invalid IP Address: {0}	The IP address is Invalid.
EID-3104	Router priority is not in the range of 0 - 255	The router priority is not in the range of 0 to 255.
EID-3105	Invalid Router Priority	The router priority is Invalid.
EID-3106	Hello Interval is not in the range of 1 - 65535	The hello interval is not in the range of 1 to 65535.
EID-3107	Invalid Hello Interval	The hello interval is Invalid.
EID-3109	Invalid Dead Interval value. Valid range is 1 - 2147483647	The dead interval is invalid.
EID-3110	Dead Interval must be larger than Hello Interval	Refer to error or warning message text.
EID-3111	LAN transit delay is not in the range of 1 - 3600 seconds	The LAN transit delay is not in the range of 1 to 3600 seconds.
EID-3112	Invalid Transmit Delay	The transmit delay is invalid.
EID-3113	Retransmit Interval is not in the range 1 - 3600 seconds	The retransmit interval is not in the range 1 to 3600 seconds.
EID-3114	Invalid Retransmit Interval	The retransmit interval is invalid.

Table 3-1 Error Messages (continued)

Error or Warning ID	Error or Warning Message	Description
EID-3115	LAN Metric is not in the range 1 - 65535.	The LAN metric is not in the range 1 to 65535.
EID-3116	Invalid LAN Metric	The LAN metric is invalid.
EID-3117	If OSPF is active on LAN, no DCC Area Ids may be 0.0.0.0. Please change all DCC Area Ids to non-0.0.0.0 values before enabling OSPF on the LAN.	Refer to error or warning message text.
EID-3118	If OSPF is active on LAN, LAN Area ID may not be the same as DCC Area Id.	Refer to error or warning message text.
EID-3119	Validation Error	CTC was unable to validate the values entered by the user. This error message is common to several different provisioning tabs within CTC (examples include the SNMP provisioning tab, the General > Network provisioning tab, the Security > Configuration provisioning tab, etc.).
EID-3120	No object of type {0} selected to delete.	No object of the selected type selected to delete.
EID-3121	Error Deleting {0}	There is an error deleting the item.
EID-3122	No object of type {0} selected to edit.	No object of the specified type selected to edit.
EID-3123	Error Editing {0}	There was an error editing the item.
EID-3124	{0} termination is in use. Check if {0} is used by IPCC.	The specified termination is in use.
EID-3125	No {0} Terminations selected.	No specified terminations are selected.
EID-3126	{0} termination could not be edited.	The specified termination could not be edited.
EID-3127	Unable to provision orderwire because E2 byte is in use by {0}.	Refer to error or warning message text.
EID-3128	The authentication key may only be {0} characters maximum	The authentication key can only be the specified characters maximum.
EID-3129	The authentication keys do not match!	Refer to error or warning message text.
EID-3130	Error creating OSPF area virtual link.	CTC encountered an error creating the Area Virtual Link.
EID-3131	Error creating OSPF virtual link.	CTC encountered an error creating the Virtual Link.
EID-3132	Error setting OSPF area range: {0}, {1}, false.	CTC encountered an error setting the area range for the specified values.
EID-3133	Max number of OSPF area ranges exceeded.	The maximum number of area ranges has been exceeded.
EID-3134	Invalid Area ID. Use DCC OSPF Area ID, LAN Port Area ID, or 0.0.0.0.	Refer to error or warning message text.
EID-3135	Invalid Mask	Refer to error or warning message text.
EID-3136	Invalid Range Address	Refer to error or warning message text.

Table 3-1 Error Messages (continued)

Error or Warning ID	Error or Warning Message	Description
EID-3137	Your request has been rejected because the timing source information was updated while your changes were still pending. Please retry.	Refer to error or warning message text.
EID-3138	Invalid clock source for switching.	Refer to error or warning message text.
EID-3139	Cannot switch to a reference of inferior quality.	Refer to error or warning message text.
EID-3140	Higher priority switch already active.	Refer to error or warning message text.
EID-3141	Attempt to access a bad reference.	Refer to error or warning message text.
EID-3142	No Switch Active.	Refer to error or warning message text.
EID-3143	Error creating static route entry.	Refer to error or warning message text.
EID-3144	Max number of static routes exceeded.	The maximum number of static routes has been exceeded.
EID-3145	RIP Metric is not in the range 1-15.	The Routing Information Protocol (RIP) metric is not in the range 1 to 15.
EID-3146	Invalid RIP Metric	Refer to error or warning message text.
EID-3147	Error creating summary address.	Refer to error or warning message text.
EID-3148	No Layer 2 domain has been provisioned.	Refer to error or warning message text.
EID-3149	Unable to retrieve MAC addresses.	Refer to error or warning message text.
EID-3150	The target file {0} is not a normal file.	The specified target file is not a normal file.
EID-3151	The target file {0} is not writeable.	The specified target file is not writeable.
EID-3152	Error creating Protection Group	CTC encountered an error creating Protection Group.
EID-3153	Cannot delete card, it is in use.	Cannot delete card. It is in use.
EID-3154	Cannot {0} card, provisioning error.	CTC cannot perform the task on the card.
EID-3155	Error Building Menu	CTC encountered an error building the menu.
EID-3156	Error on building menu (cards not found for {0} group)	CTC encountered an error on building the menu (cards not found for the specified group).
EID-3157	Unable to set selected model: unexpected model class {0}	CTC encountered an unexpected model class while trying to complete the task.
EID-3158	Unable to switch, a similar or higher priority condition exists on peer or far-end card.	Refer to error or warning message text.
EID-3159 <sup>1</sup>	Error applying operation.	CTC encountered an error applying this operation.
EID-3160	{0} error encountered.	CTC encountered the displayed error.
EID-3161	Ring Upgrade Error	An error was encountered while attempting to upgrade the BLSR. Refer to the details portion of the error dialog box for more information.

Table 3-1 Error Messages (continued)

Error or Warning ID	Error or Warning Message	Description
EID-3162	This protection operation cannot be set because the protection operation on the other side has been changed but not yet applied.	Refer to error or warning message text.
EID-3163	Cannot validate data for row {0}	Cannot validate data for the specified row.
EID-3164	New Node ID ({0}) for Ring ID {1} duplicates ID of node {2}	The new specified node ID for the specified ring ID is the same as the second specified node ID.
EID-3165	The Ring ID provided is already in use. Ring IDs must be unique	Refer to error or warning message text.
EID-3166	Error refreshing {0} table	CTC encountered an error refreshing the specified table.
EID-3167	Slot already in use	Refer to error or warning message text.
EID-3168	Provisioning Error	An error was encountered while attempting the specified provisioning operation. Refer to the details portion of the error dialog box for more information.
EID-3169	Error Adding Card	CTC encountered an error adding the card.
EID-3170	Cannot delete card, {0}	Cannot delete the specified card.
EID-3171	Error creating Trap Destination	CTC encountered an error creating the trap destination.
EID-3172	No RMON Thresholds selected	Refer to error or warning message text.
EID-3173	The contact "{0}" exceeds the limit of {1} characters.	The specified contact exceeds the specified character limit.
EID-3174	The location "{0}" exceeds the limit of {1} characters.	The specified location exceeds the specified character limit.
EID-3175	The operator identifier "{0}" exceeds the limit of {1} characters.	The specified operator identifier exceeds the specified character limit.
EID-3176	The operator specific information "{0}" exceeds the limit of {1} characters.	The specified operator specific information exceeds the specified character limit.
EID-3177	The node name cannot be empty.	The specified name is empty.
EID-3178	The name "{0}" exceeds the limit of {1} characters.	The specified name exceeds the specified character limit.
EID-3179	Protect card is in use.	Refer to error or warning message text.
EID-3180	1+1 Protection Group does not exist.	Refer to error or warning message text.
EID-3181	Y Cable Protection Group does not exist.	Refer to error or warning message text.
EID-3182	The Topology Element is in use and cannot be deleted as requested	Refer to error or warning message text.
EID-3183	Error Deleting Protection Group	CTC encountered an error deleting the protection group.

Table 3-1 Error Messages (continued)

Error or Warning ID	Error or Warning Message	Description
EID-3184	No {0} selected.	You must select an item before completing this task.
EID-3185	There is a protection switch operation on this ring. Therefore, it cannot be deleted at this time.	Refer to error or warning message text.
EID-3186	Busy {0} is {1} and cannot be deleted as requested.	The item is in use and cannot be deleted as requested.
EID-3187	Error deleting trap destination.	CTC encountered an error deleting the trap destination.
EID-3214	Could not get number of HOs for line.	The number of High Orders for line is not available.
EID-3215	Error in refreshing.	Used frequently in pane classes to indicate a general error condition when trying to refresh from the model.
EID-3216	Invalid proxy port.	Invalid Proxy port.
EID-3217	Could not refresh stats.	Could not refresh statistics.
EID-3218	Unable to launch automatic node setup.	Refer to error or warning message text.
EID-3219	Unable to refresh automatic node setup information.	Failure trying to retrieve optical link information.
EID-3220	Error refreshing row {0}	Error refreshing the specified row.
EID-3222	Could not clear stats.	Refer to error or warning message text.
EID-3223	Error cancelling software upgrade.	Refer to error or warning message text.
EID-3224	Error accepting load.	Refer to error or warning message text.
EID-3225	Error while refreshing pane.	Refer to error or warning message text.
EID-3226	{0} termination(s) could not be deleted. {1}	Refer to error or warning message text.
EID-3227	Unable to record a baseline, performance metrics will remain unchanged.	Refer to error or warning message text.
EID-3228	{0} termination(s) could not be created. {1}	Refer to error or warning message text.
EID-3229	RIP is active on the LAN. Please disable RIP before enabling OSPF.	RIP is active on the LAN. Please disable RIP before enabling OSPF.
EID-3230	OSPF is active on the LAN. Please disable OSPF before enabling RIP.	OSPF is active on the LAN. Please disable OSPF before enabling RIP.
EID-3231	Error in Set OPR	An error was encountered while attempting to provision the optical power received (OPR).
EID-3232	Cannot transition port state indirectly: try editing directly	Refer to error or warning message text.
EID-3233	Current loopback provisioning does not allow this state transition	Refer to error or warning message text.

Table 3-1 Error Messages (continued)

Error or Warning ID	Error or Warning Message	Description
EID-3234	Current synchronization provisioning does not allow this state transition	Refer to error or warning message text.
EID-3235	Cannot perform requested state transition on this software version.	Refer to error or warning message text.
EID-3236	Database Restore failed. {0}	The specified database restore failed.
EID-3237	Database Backup failed. {0}	The specified database backup failed.
EID-3238	Send PDIP setting on {0} is inconsistent with that of control node {1}	The send payload defect indicator path (PDI-P) setting on the specified item is inconsistent with that of the specified control node.
EID-3239	The overhead termination is invalid	Refer to error or warning message text.
EID-3240	The maximum number of overhead terminations has been exceeded.	Refer to error or warning message text.
EID-3241	The {0} termination port is in use.	The specified termination port is in use.
EID-3242	LDCC exists on the selected ports. Please create SDCC one by one.	The line DCC (LDCC) exists on the selected ports. Please create SDCC one by one.
WID-3243	LDCC exists on the selected port. Please remove one after the connection is created.	An LDCC exists on this port. Delete the LDCC after the connection is created.
EID-3244	SDCC exists on the selected ports. Please create LDCC one by one.	SDCC exists on the selected ports. Please create LDCC one by one.
WID-3245	The port you have chosen as LDCC endpoint already supports an SDCC. The port cannot support both DCCs. After the LDCC is created, verify that no EOC alarms are present and then delete the SDCC to complete the upgrade.	Refer to error or warning message text.
EID-3246	Wizard unable to validate data: {0}	CTC encountered an error.
EID-3247	Ordering error. The absolute value should be {0}	Ordering error. The absolute value should be the number specified.
EID-3248	Wrong parameter is changed: {0}	CTC changed the wrong parameter.
EID-3249	Invalid voltage increment value.	Refer to error or warning message text.
EID-3250	Invalid power monitor range.	Refer to error or warning message text.
EID-3251	Unable to complete requested action. {0}	CTC is unable to complete requested action.
EID-3252	No download has been initiated from this CTC session.	Refer to error or warning message text.
EID-3253	Reboot operation failed. {0}	The reboot operation failed.
EID-3254	Validation Error. {0}	The Cisco Transport Controller (CTC) was unable to validate the values entered by the user, specified by {0}. This error message is common to several different provisioning tabs within the CTC.
EID-3255	Can not change timing configuration, manual/force operation is performed.	Refer to error or warning message text.

Table 3-1 Error Messages (continued)

Error or Warning ID	Error or Warning Message	Description
WID-3256	Could not assign timing reference(s) because - at least one timing reference has already been used and/or - a timing reference has been attempted to be used twice. Please use the "Reset" button and verify the settings.	Refer to error or warning message text.
EID-3257	Duplicate DCC number detected: {0}.	CTC detected a duplicate DCC number.
EID-3258	There was a software error attempting to download the file. Please try again later.	Refer to error or warning message text.
EID-3259	Create FC-MR Threshold	You must create an Fibre Channel Multirate (FC_MR) card threshold.
EID-3260	An error was encountered while provisioning the internal subnet: {0}	Refer to error or warning message text.
EID-3261	The port rate provisioning cannot be changed while circuits exist on this port.	Refer to error or warning message text.
EID-3262	The port provisioning cannot be changed when the port status is not OOS.	Refer to error or warning message text.
WID-3263	You are using Java version {0}. CTC should run with Java version {1}. It can be obtained from the installation CD or <a href="http://java.sun.com/j2se/">http://java.sun.com/j2se/</a>	CTC is being launched with the wrong version of the JRE {0}. This version of CTC requires a particular version of the JRE {1}. The CTC and browser must be closed and restarted to allow the correct Java version to be loaded.
EID-3264	The port provisioning cannot be changed while the port is in service.	Refer to error or warning message text.
EID-3265	Error modifying Protection Group	There was an error modifying the protection group.
EID-3266	Conditions could not be retrieved from the shelf or card view.	Refer to error or warning message text.
WID-3267	Cannot edit XTC protection group.	Refer to error or warning message text.
WID-3268	Invalid entry. {0}	The entry is invalid.
WID-3269	{0} was successfully initiated for {1} but its completion status was not able to be obtained from the node. {0} may or may not have succeeded. When the node is accessible, check its software version.	The specified task was successfully initiated for the item, but its completion status was not able to be obtained from the node. The task might or might not have succeeded. When the node is accessible, check its software version.
WID-3270	The file {0} does not exist.	The specified file does not exist.
WID-3271	The value entered must be greater than {0}.	The value entered must be greater than the value shown.
WID-3272	Entry required	An entry is required for this task.
WID-3273	{0} already exists in the list.	The specified item already exists in the list.



Table 3-1 Error Messages (continued)

Error or Warning ID	Error or Warning Message	Description
WID-3274	A software upgrade is in progress. Network configuration changes that results a node reboot can not take place during software upgrade. Please try again after software upgrade is done.	Refer to error or warning message text.
WID-3275	Make sure the Remote Interface ID and the Local Interface ID on the two sides are matched. (Local Interface ID on this node should equal Remote Interface ID on the neighbor node and vice-versa.)	Refer to error or warning message text.
WID-3276	Both SDCC and LDCC exist on the same selected port. {0}	Refer to error or warning message text.
WID-3277	The description cannot contain more than {0} characters. Your input will be truncated.	Refer to error or warning message text.
WID-3279	Card deleted, returning to shelf view.	Refer to error or warning message text.
WID-3280	ALS will not engage until both the protected trunk ports detect LOS.	Refer to error or warning message text.
WID-3281	A software upgrade is in progress. {0} can not proceed during a software upgrade. Please try again after the software upgrade has completed.	Refer to error or warning message text.
WID-3283	There is a protection switch or another protection operation applied on the ring. Applying this protection operation now will probably cause a traffic outage. OK to continue?	Refer to error or warning message text.
WID-3284	Protection Channel Access circuit found on {0} being set to non-revertive. These circuits will not be able to re-establish after ring or span switch. OK to continue?	Refer to error or warning message text.
WID-3285	Applying FORCE or LOCKOUT operations may result in traffic loss.	Refer to error or warning message text.
WID-3286	The ring status is INCOMPLETE. CTC cannot determine if there are existing protection operations or switches in other parts of the ring. Applying a protection operation at this time could cause a traffic outage. Please confirm that no other protection operations or switches exist before continuing.	Refer to error or warning message text.
WID-3287	There is a protection operation or protection switch present on the ring. Applying this protection operation now will probably cause a traffic outage.	Refer to error or warning message text.
WID-3288	This ring status is INCOMPLETE. CTC will not be able to apply this change to all of the nodes in the {0}.	Refer to error or warning message text.
EID-3290	Unable to delete specified provisionable patchcord(s).	Refer to error or warning message text.
EID-3291	Cannot change revertive behavior due to an active protection switch.	Refer to error or warning message text.
EID-3292	Error resetting shelf.	Refer to error or warning message text.

Table 3-1 Error Messages (continued)

Error or Warning ID	Error or Warning Message	Description
EID-3293	No such provisionable patchcord.	You are attempting to delete a provisionable patchcord that does not exist. This happens when multiple instances of CTC are running and attempting to delete the same provisionable patchcord concurrently.
EID-3294	No RMON thresholds available for selected port.	Refer to error or warning message text.
EID-3295	This card does not support RMON thresholds.	Refer to error or warning message text.
EID-3296	Buffer-to-buffer credit is only supported for Fibre Channel (FC) and FICON.	Refer to error or warning message text.
EID-3298	ALS Auto Restart is not supported by this interface.	Refer to error or warning message text.
EID-3300	Can not have duplicate OSPF Area IDs.	Refer to error or warning message text.
EID-3301	LAN metric may not be zero.	Refer to error or warning message text.
EID-3302	Standby {0} not ready.	Standby controller card is not ready.
EID-3303	DCC Area ID and {0} conflict. {1}	DCC Area ID and ring type, specified by {0}, conflict each other due to the details specified by {1}.
EID-3304	DCC number is out of range.	Refer to error or warning message text.
EID-3305	Can not have OSPF turned on the LAN interface and the back bone area set on a DCC interface.	You cannot have the default OSPF area on a DCC while OSPF is enabled on the LAN.
EID-3306	Ethernet circuits must be bidirectional.	Refer to error or warning message text.
EID-3307	Error while creating connection object at {0}.	Refer to error or warning message text.
EID-3308	DWDM Link can be used only for optical channel circuits.	Refer to error or warning message text.
EID-3309	OCH-NC circuit: link excluded - wrong direction.	The optical channel (circuit) does not allow the specified link to be included because it is in the wrong optical direction.
EID-3310	DWDM Link does not have wavelength available.	Refer to error or warning message text.
EID-3311	Laser already on.	Refer to error or warning message text.
EID-3312	Unable to change the power setpoint {0} {1}	Unable to change the power setpoint. The new setpoint would either make the thresholds inconsistent or set the fail threshold outside the range.
EID-3313	Unable to modify offset. Amplifier port is in service state.	Refer to error or warning message text.
EID-3314	Requested action not allowed. Invalid state value.	Refer to error or warning message text.
EID-3315	Unable to perform operation.	CTC is unable to perform operation.
EID-3316	Wrong node side.	This task was applied to the wrong node side.
EID-3317	Name too long.	The name you entered is too long.
EID-3318	Illegal name.	The name you entered is illegal.
EID-3319	Wrong line selection.	You selected the wrong line.

Table 3-1 Error Messages (continued)

Error or Warning ID	Error or Warning Message	Description
EID-3320	Unable to delete optical link.	CTC is unable to delete the optical link.
EID-3321	This feature is unsupported by this version of software.	Refer to error or warning message text.
EID-3322	Equipment is not plugged-in.	At least one equipment is not plugged in.
EID-3323	APC system is busy.	Automatic Power Control (APC) system is busy.
EID-3324	No path to regulate.	There is no circuit path to be regulated.
EID-3325	Requested action not allowed.	Generic DWDM provisioning failure message.
EID-3326	Wrong input value.	The input value is incorrect.
EID-3327	Error in getting thresholds.	There was an error retrieving the thresholds. This message is displayed only for the OSCM/OSC-CSM line thresholds.
EID-3328	Error applying changes to row {0}.Value out of range.	There was an error applying the changes to the specified row. The value is out of range.
EID-3330	Unable to switch to the byte because an overhead channel is present on this byte of the port.	Refer to error or warning message text.
EID-3331	Error applying changes to row.	There was an error applying changes to the row.
EID-3334	Cannot change timing parameters on protect port.	You cannot change timing parameters on protect port.
EID-3335	This port's type cannot be changed: SDH validation check failed. Check if this port is part of a circuit, protection group, SONET DCC, orderwire, or UNI-C interface.	This port's type cannot be changed. The SDH validation check failed. Check to see if this port is part of a circuit, protection group, SONET DCC, orderwire, or user network interface, client (UNI-C) interface.
EID-3336	Error on reading a control mode value.	The Control Mode must be retrieved.
EID-3337	Error on setting a set point gain value.	The Gain Set Point must be set.
EID-3338	Error on reading a set-point gain value.	The Gain Set Point must be retrieved.
EID-3339	Error on setting a tilt calibration value.	The tilt calibration must be set.
EID-3340	Error on setting expected wavelength.	The expected wavelength must be set.
EID-3341	Error on reading expected wavelength.	The expected wavelength must be retrieved.
EID-3342	Error on reading actual wavelength.	The actual wavelength must be retrieved.
EID-3343	Error on reading actual band.	The actual band must be retrieved.
EID-3344	Error on reading expected band.	The expected band must be retrieved.
EID-3345	Error on setting expected band.	The expected band must be set.
EID-3346	Error retrieving defaults from the node: {0}.	There was an error retrieving defaults from the specified node.
EID-3347	Cannot load file {0}.	CTC cannot load the specified file.
EID-3348	Cannot load properties from the node.	CTC cannot load properties from the node.

Table 3-1 Error Messages (continued)

Error or Warning ID	Error or Warning Message	Description
EID-3349	Cannot save NE Update values to file.	CTC cannot save NE Update values to file.
EID-3350	Cannot load NE Update properties from the node:	CTC cannot load NE Update properties from the node.
EID-3351	File {0} does not exist.	The specified file does not exist.
EID-3352	Error on setting value at {0}.	There was an error setting the value at the specified location.
EID-3353	There is no such interface available.	No such interface exists in CTC.
EID-3354	Specified endpoint is in use.	The end point is in use.
EID-3355	Specified endpoint is incompatible.	The end point is incompatible.
EID-3357	Unable to calculate connections.	CTC is unable to calculate connections.
EID-3358	Optical link model does not exist for specified interface.	The optical link does not exist for the specified index.
EID-3359	Unable to set optical parameters for the node.	Refer to error or warning message text.
EID-3361	Ring termination is in use. Error deleting ring termination	Refer to error or warning message text.
EID-3362	Error deleting ring termination.	There was an error deleting ring termination.
EID-3363	No ring terminations selected.	You must select a ring termination.
EID-3364	Error creating ring ID.	There was an error creating the ring ID.
EID-3365	OSC termination is in use.	The optical service channel (OSC) termination is in use.
EID-3366	Error deleting OSC termination.	There was an error deleting the OSC termination.
EID-3370	No optical link has been selected	You must select an optical link.
EID-3371	Error while calculating automatic optical link list.	There was an error calculating the automatic optical link list.
EID-3372	Attempt to access an OCH-NC connection that has been destroyed.	Attempt to access an optical channel network connection that has been destroyed.
EID-3375	Expected span loss must be set.	Refer to error or warning message text.
EID-3376	Unable to retrieve measured span loss.	Refer to error or warning message text.
EID-3377	Wrong interface used.	Refer to error or warning message text.
EID-3378	Duplicate origination patchcord identifier.	The provisionable patchcord identifier to the patchcord you are attempting to provision is already in use by another patchcord on the origination node.
EID-3379	Duplicate termination patchcord identifier.	The provisionable patchcord identifier to the patchcord you are attempting to provision is already in use by another patchcord on the remote node.

Table 3-1 Error Messages (continued)

Error or Warning ID	Error or Warning Message	Description
EID-3380	Unable to locate host.	Refer to error or warning message text.
EID-3381	Maximum Frame size must be between {0} and {1} and may be increased in increments of {2}.	Refer to error or warning message text.
EID-3382	Number of credits must be between {0} and {1}.	Refer to error or warning message text.
EID-3383	GFP Buffers Available must be between {0} and {1} and may be increased in increments of {2}.	Refer to error or warning message text.
WID-3384	You are about to force the use of Secure Mode for this chassis. You will not be able to undo this operation. OK to continue?	Refer to error or warning message text.
EID-3385	{0}. Delete circuits, then try again.	Refer to error or warning message text.
EID-3386	Unable to provision transponder mode: {0}	Refer to error or warning message text.
EID-3387	You must change port{0} to an out-of-service state before changing card parameters. Click Reset to revert the changes.	Refer to error or warning message text.
EID-3388	Unable to change the card mode because the card has circuits.	Refer to error or warning message text.
EID-3389	Error encountered while changing the card mode.	Refer to error or warning message text.
EID-3390	Port is in use.	Refer to error or warning message text.
EID-3391	Unable to change the port rate because the port has been deleted.	Refer to error or warning message text.
WID-3392	Could not assign timing reference(s) because - with external timing, only a single protected, or two unprotected timing references per BITS Out may be selected. Please use the "Reset" button and verify the settings.	Refer to error or warning message text.
WID-3393	Could not assign timing reference(s) because - with line or mixed timing, only a single unprotected timing reference per BITS Out may be selected. Please use the "Reset" button and verify the settings.	Refer to error or warning message text.
WID-3394	Error refreshing Power Monitoring values.	Refer to error or warning message text.
WID-3395	Invalid IP Configuration: {0}	Error in IP address, net mask length, default router, or a restricted IOP port was selected.
EID-3396	Invalid Configuration: The standby controller card is not a TCC2P card.	Refer to error or warning message text.
EID-3397	Wrong version for file {0}.	The file {0} is of wrong version.
EID-3398	Cannot delete PPM.	Refer to error or warning message text.
EID-3399	Cannot delete PPM. It has port(s) in use.	Refer to error or warning message text.
EID-3400	Unable to switch, force to Primary Facility not allowed.	Refer to error or warning message text.
EID-3401	{0} cannot be provisioned for the port while {1} is enabled.	The relationship between parameters {0} and {1} are such that enabling either one, prevents the provisioning of the other.

Table 3-1 Error Messages (continued)

Error or Warning ID	Error or Warning Message	Description
EID-3402	Unable to complete the FORCE operation. The protect card is either not present or is not responding. Please check the protect card state and try again.	Refer to error or warning message text.
EID-3403	Cannot perform requested state transition on monitored port.	Refer to error or warning message text.
EID-3404	The far end IP address could not be set on the {0} termination. The IP address cannot be:  loopback (127.0.0.0/8) class D (224.0.0.0/4) class E (240.0.0.0/4) broadcast (255.255.255.255/32) internal {1}	Refer to error or warning message text.
EID-4000	The {0} ring name cannot be changed now. A {0} switch is active.	Refer to error or warning message text.
EID-4001	The {0} ring ID cannot be changed now. A {0} switch is active.	You cannot change the ring ID because a switch of the same ring type is active.
EID-5000	Cannot find a valid route for tunnel change request.	Refer to error or warning message text.
EID-5001	Tunnel could not be changed.	Refer to error or warning message text.
EID-5002	Tunnel could not be restored and must be recreated manually.	Refer to error or warning message text.
EID-5003	Circuit roll failure. {0}	Refer to error or warning message text.
EID-5004	There is already one 4F {0} provisioned on the set of nodes involved in {1}. The maximum number of 4F {0} rings has been reached for that node.	There is already one 4F BLSR provisioned on the set of nodes involved in the ring. The maximum number of 4F BLSR rings has been reached for that node.
WID-5005	A non-zero hold-off time can violate switching time standards, and should only be used for a circuit with multiple path selectors.	Refer to error or warning message text.
WID-5006	Warning: Different secondary {0} node should only be used for DRI or Open-ended path protected circuits.	You should use different secondary end point only for DRI or open-ended path protected circuits.
WID-5007	If you change the scope of this view, the contents of this profile editor will be lost.	Refer to error or warning message text.
WID-5008	Please make sure all the protection groups are in proper state after the cancellation.	Refer to error or warning message text.
WID-5009	Circuit {0} not upgradable. No {1} capable {2}s are available at node {3}.	No VT capable STSs are available at the node.
EID-5010	Domain name already exists.	Refer to error or warning message text.
EID-5011	Domain name may not exceed {0} characters.	Refer to error or warning message text.

Table 3-1 Error Messages (continued)

Error or Warning ID	Error or Warning Message	Description
WID-5012	Software load on {0} does not support the addition of a node to a 1+1protection group.	Refer to error or warning message text.
EID-5013	{0} doesn't support Bridge and Roll Feature. Please select a different port.	Refer to error or warning message text.
EID-5014	An automatic network layout is already in progress, please wait for it to complete for running it again.	You must for the automatic network layout to complete before running it again.
WID-5015	{0} cannot be applied to {1}.	You cannot apply the admin state operation, specified by {0}, to port count, specified by {1}.
EID-5016	An error was encountered while attempting to provision the {0}. {1}	Refer to error or warning message text.
EID-5017	Unable to rollback provisioning, the {0} may be left in an INCOMPLETE state and should be manually removed.	You may have to remove the BLSR manually as it was left incomplete.
EID-5018	{0} is {1} node and cannot be added to {2} network.	You cannot add the node {0} of type {1} to the host node of type {2}. This prevents you from hosting both SONET and SDH nodes in the same session.
EID-5019	Manual mode for this equipment does not support an expected string consisting of all null characters. Please change the expected string or the path trace mode.	The path trace mode does not support strings that consist of null characters. You must either change the expected string or the path trace mode.
EID-6000	Platform does not support power monitoring thresholds	Refer to error or warning message text.
EID-6001	One of the XC cards has failures or is missing.	Refer to error or warning message text.
EID-6002	One of the XC cards is locked.	Refer to error or warning message text.
EID-6003	Unable to create OSC termination. Ring ID already assigned.	Refer to error or warning message text.
EID-6004	Unable to perform a system reset while a BLSR ring is provisioned on the node.	Refer to error or warning message text.
EID-6005	Could not assign timing references: - Only two DS1 or BITS interfaces can be specified. - DS1 interfaces cannot be retimed and used as a reference - BITS-2 is not supported on this platform.	Refer to error or warning message text.
EID-6006	Could not assign timing references: - NE reference can only be used if timing mode is LINE. - A BITS reference can only be used if timing mode is not LINE. - A line reference can only be used if timing mode is not EXTERNAL.	Refer to error or warning message text.
WID-6007	Cancelling a software upgrade during standby TSC clock acquisition may result in a traffic outage	Refer to error or warning message text.
EID-6008	SF BER and SD BER are not provisionable on the protect line of a protection group.	Refer to error or warning message text.

Table 3-1 Error Messages (continued)

Error or Warning ID	Error or Warning Message	Description
WID-6009	If Autoadjust GFP Buffers is disabled, GFP Buffers Available must be set to an appropriate value based on the distance between the circuit end points.	Refer to error or warning message text.
WID-6010	If Auto Detection of credits is disabled, Credits Available must be set to a value less than or equal to the number of receive credits on the connected FC end point.	Refer to error or warning message text.
WID-6011	Idle filtering should be turned off only when required to operate with non-Cisco FibreChannel/FICON-over-SONET equipment.	Refer to error or warning message text.
EID-6012	Could not change the retiming configuration. There are circuits on this port	Refer to error or warning message text.
EID-6013	NTP/SNTP server could not be changed. {1}	Refer to error or warning message text.
EID-6014	Operation failed. The reference state is OOS.	Refer to error or warning message text.
EID-6015	Distance Extension cannot be disabled if the port media type is FICON 1Gbps ISL or FICON 2Gbps ISL.	Refer to error or warning message text.
EID-6016	Card mode cannot be changed to Fibre Channel Line Rate if the port media type is FICON 1Gbps ISL or FICON 2Gbps ISL.	Refer to error or warning message text.
EID-6017	The destination of a static route cannot be a node IP address.	Refer to error or warning message text.
EID-6018	The destination of a static route cannot be the same as the subnet used by the node.	Refer to error or warning message text.
EID-6019	The destination of a static route cannot be 255.255.255.255	Refer to error or warning message text.
EID-6020	The destination of a static route cannot be the loopback network (127.0.0.0/8)	Refer to error or warning message text.
EID-6021	The subnet mask length for a non-default route must be between 8 and 32.	Refer to error or warning message text.
EID-6022	The subnet mask length for a default route must be 0.	Refer to error or warning message text.
EID-6023	The destination of a static route cannot be an internal network{0}.	Refer to error or warning message text.
EID-6024	The destination of a static route cannot be a class D (224.0.0.0/4) or class E (240.0.0.0/4) address.	Refer to error or warning message text.
EID-6025	The destination of a static route cannot be a class A broadcast address (x.255.255.255/8)	Refer to error or warning message text.
EID-6026	The destination of a static route cannot be a class B broadcast address (x.x.255.255/16)	Refer to error or warning message text.
EID-6027	The destination of a static route cannot be a class C broadcast address (x.x.x.255/24)	Refer to error or warning message text.
EID-6028	The destination of a static route cannot be the subnet broadcast address associated with a node IP address.	Refer to error or warning message text.
EID-6029	The next hop of a static route cannot be the same as the destination of the route or an internal network{0}.	Refer to error or warning message text.



Table 3-1 Error Messages (continued)

Error or Warning ID	Error or Warning Message	Description
EID-6030	The next hop of a static default route must be the provisioned default router.	Refer to error or warning message text.
EID-6031	No more static routes can be created.	Refer to error or warning message text.
EID-6032	This static route already exists.	Refer to error or warning message text.
EID-6033	Previous operation is still in progress.	Refer to error or warning message text.
EID-6035	Parent entity does not exist.	Refer to error or warning message text.
EID-6036	Parent PPM entity does not exist.	Refer to error or warning message text.
EID-6037	Equipment type is not supported.	Refer to error or warning message text.
EID-6038	Invalid PPM port.	Refer to error or warning message text.
EID-6039	Card is part of a regeneration group.	Refer to error or warning message text.
EID-6040	Out of memory.	Refer to error or warning message text.
EID-6041	Port is already present.	Refer to error or warning message text.
EID-6042	Port is used as timing source.	Refer to error or warning message text.
EID-6043	DCC or GCC is present.	Refer to error or warning message text.
EID-6044	Card or port is part of protection group.	Refer to error or warning message text.
EID-6045	Port has overhead circuit(s).	Refer to error or warning message text.
EID-6046	G.709 configuration is not compatible with data rate.	Refer to error or warning message text.
EID-6047	Port cannot be deleted because its service state is OOS-MA,LPBK&MT.	Refer to error or warning message text.
EID-6048	{0} is {1}.	Refer to error or warning message text.
EID-6049	Changing the encapsulation type with ports enabled might be service affecting. A circuit using this port must have the same encapsulation at both ends.	Refer to error or warning message text.
EID-6050	Some {0} terminations were not {1}d. {2}	Refer to error or warning message text.
EID-6051	All {0} terminations were {1}d successfully. {2}	Refer to error or warning message text.
EID-6052	The authentication key can not be blank.	Refer to error or warning message text.

1. EID-3159 can appear if you attempt to perform another switching operation within a certain time interval. This interval is an algorithm of three seconds per working card in the protection group. The maximum interval is 10 seconds.

