



cache (Flexible NetFlow) through match flow

- [cache \(Flexible NetFlow\)](#), on page 3
- [clear flow exporter](#), on page 8
- [clear flow monitor](#), on page 9
- [clear sampler](#), on page 11
- [collect application http](#), on page 12
- [collect application name](#), on page 14
- [collect application nntp](#), on page 16
- [collect application pop3](#), on page 18
- [collect application rtsp](#), on page 20
- [collect application sip](#), on page 22
- [collect application smtp](#), on page 24
- [collect connection](#), on page 26
- [collect counter](#), on page 28
- [collect datalink dot1q vlan](#), on page 32
- [collect datalink mac](#), on page 34
- [collect flow](#), on page 37
- [collect interface](#), on page 39
- [collect ipv4](#), on page 41
- [collect ipv4 destination](#), on page 44
- [collect ipv4 fragmentation](#), on page 46
- [collect ipv4 section](#), on page 48
- [collect ipv4 source](#), on page 50
- [collect ipv4 total-length](#), on page 53
- [collect ipv4 ttl](#), on page 55
- [collect ipv6](#), on page 57
- [collect ipv6 destination](#), on page 59
- [collect ipv6 extension map](#), on page 61
- [collect ipv6 fragmentation](#), on page 63
- [collect ipv6 hop-limit](#), on page 65
- [collect ipv6 length](#), on page 67
- [collect ipv6 section](#), on page 69
- [collect ipv6 source](#), on page 72
- [collect mpls label](#), on page 74

- [collect policy qos classification hierarchy](#), on page 76
- [collect policy qos queue index](#), on page 77
- [collect routing](#), on page 78
- [collect routing is-multicast](#), on page 83
- [collect services pfr](#), on page 85
- [collect timestamp absolute](#), on page 86
- [collect timestamp sys-uptime](#), on page 88
- [collect transport](#), on page 90
- [collect transport icmp ipv4](#), on page 92
- [collect transport icmp ipv6](#), on page 94
- [collect transport tcp](#), on page 96
- [collect transport udp](#), on page 100
- [debug flow exporter](#), on page 102
- [debug flow monitor](#), on page 104
- [debug flow record](#), on page 106
- [debug sampler](#), on page 110
- [default \(Flexible NetFlow\)](#), on page 112
- [description \(Flexible NetFlow\)](#), on page 114
- [destination](#), on page 116
- [dscp \(Flexible NetFlow\)](#), on page 118
- [execute \(Flexible NetFlow\)](#), on page 119
- [exporter](#), on page 120
- [export-protocol](#), on page 122
- [flow exporter](#), on page 124
- [flow hardware](#), on page 126
- [flow monitor](#), on page 128
- [flow platform](#), on page 130
- [flow record](#), on page 132
- [granularity](#), on page 134
- [ip flow monitor](#), on page 135
- [ipv6 flow monitor](#), on page 139
- [match application name](#), on page 143
- [match connection id](#), on page 145
- [match connection transaction-id](#), on page 146
- [match datalink dot1q priority](#), on page 148
- [match datalink dot1q vlan](#), on page 149
- [match datalink ethertype](#), on page 151
- [match datalink mac](#), on page 152
- [match datalink vlan](#), on page 154
- [match flow](#), on page 155

cache (Flexible NetFlow)

To configure the flow cache parameter for a Flexible NetFlow flow monitor, use the **cache** command in Flexible NetFlow flow monitor configuration mode. To remove a flow cache parameter for a Flexible NetFlow flow monitor, use the **no** form of this command.

```
cache {entries number | timeout {active seconds | event transaction-end | inactive seconds | update
seconds | synchronized interval [export-spread [spread-interval] ]} | type {immediate | normal |
permanent | synchronized}}
```

```
no cache {entries | timeout {active | event transaction-end | inactive | update | synchronized} |
type {immediate | normal | permanent | synchronized}}
```

Syntax Description

entries <i>number</i>	Specifies the maximum number of entries in the flow monitor cache. The range is from 16 to 2000000. Note On the Cisco ISR 4400 Series Integrated Services Routers, the range is from 16 to 1000000.
timeout active <i>seconds</i>	Specifies the active flow timeout in seconds. The range is from 1 to 604800 (7 days). The default is 1800.
timeout event transaction-end	Specifies that the record is generated and exported in the NetFlow cache at the end of a transaction.
timeout inactive <i>seconds</i>	Specifies the inactive flow timeout in seconds. The range is from 1 to 604800 (7 days). The default is 15.
timeout update <i>seconds</i>	Specifies the update timeout, in seconds, for a permanent flow cache. The range is from 1 to 604800 (7 days). The default is 1800.
timeout synchronized <i>interval</i>	Specifies the synchronized interval timeout value. The range is from 1 to 300.
export-spread	Enables export spreading.
<i>spread-interval</i>	The export spreading interval in seconds. The valid period is 5 or 6.
type	Specifies the type of the flow cache.
immediate	Configures an immediate cache type. This cache type will age out every record as soon as it is created.
normal	Configures a normal cache type. The entries in the flow cache will be aged out according to the timeout active seconds and timeout inactive seconds settings. This is the default cache type.
permanent	Configures a permanent cache type. This cache type disables flow removal from the flow cache.
synchronized	Configures a synchronized cache type.

Command Default

The default Flexible NetFlow flow monitor flow cache parameters are used.

The following flow cache parameters for a Flexible NetFlow flow monitor are enabled:

- Cache type: normal
- Maximum number of entries in the flow monitor cache: 4096
- Active flow timeout: 1800 seconds
- Inactive flow timeout: 15 seconds
- Update timeout for a permanent flow cache: 1800 seconds

Command Modes

Flexible NetFlow flow monitor configuration (config-flow-monitor)

Command History

Release	Modification
12.4(9)T	This command was introduced.
12.2(31)SB2	This command was integrated into Cisco IOS Release 12.2(31)SB2.
12.0(33)S	This command was modified. Support for this command was implemented on the Cisco 12000 series routers.
12.2(33)SRC	This command was modified. Support for this command implemented on the Cisco 7200 series routers.
12.2(33)SRE	This command was modified. Support for this command was implemented on the Cisco 7300 Network Processing Engine (NPE) series routers.
Cisco IOS XE Release 3.1S	This command was integrated into Cisco IOS XE Release 3.1S.
Cisco IOS XE Release 3.4S	This command was modified. The event transaction-end keyword was added.
Cisco IOS XE Release 3.2SE	This command was integrated into Cisco IOS XE Release 3.2SE with support for the timeout and type normal keywords only.
Cisco IOS XE Release 3.11S	This command was modified. The export-spread keyword was added. The update keyword was removed.

Usage Guidelines

Each flow monitor has a cache that it uses to store all the flows it monitors. Each cache has various configurable elements, such as the number of entries and the time that a flow is allowed to remain in it. When a flow times out, it is removed from the cache and sent to any exporters that are configured for the corresponding flow monitor.

If a cache is already active (that is, you have applied the flow monitor to at least one interface in the router), your changes to the record, cache type, and cache size parameters will not take effect until you either reboot the router or remove the flow monitor from every interface and then reapply it. Therefore whenever possible you should customize the record, cache type, and cache size parameters for the cache before you apply the flow monitor to an interface. You can modify the timers, flow exporters, and statistics parameters for a cache while the cache is active.

cache entries

This command controls the size of the cache. Cache size should be based on a number of factors, including the number of flows expected, the time the flows are expected to last (based on the configured key fields and the traffic), and the timeout values configured for the cache. The size should be large enough to minimize emergency expiry.

Emergency expiry is caused by the Flexible NetFlow cache becoming full. When the Flexible NetFlow cache becomes full, the router performs “emergency expiry” where a number of flows are immediately aged, expired from the Flexible NetFlow cache, and exported in order to free up space for more flows.

For a permanent cache (flows never expire), the number of entries should be large enough to accommodate the number of flows expected for the entire duration of the cache entries. If more flows occur than there are cache entries, the excess flows are not recorded in the cache.

For an immediate cache (flows expire immediately), the number of entries simply controls the amount of history that is available for previously seen packets.

cache timeout active

This command controls the aging behavior of the normal type of cache. If a flow has been active for a long time, it is usually desirable to age it out (starting a new flow for any subsequent packets in the flow). This age out process allows the monitoring application that is receiving the exports to remain up to date. By default this timeout is 1800 seconds (30 minutes), but it can be adjusted according to system requirements. A larger value ensures that long-lived flows are accounted for in a single flow record; a smaller value results in a shorter delay between starting a new long-lived flow and exporting some data for it.

cache timeout event transaction-end

To use this command, you must configure the **match connection transaction id** command and the **match application name** command for the flow record. This command causes the record to be generated and exported in the NetFlow cache at the end of a transaction. A transaction is a set of logical exchanges between endpoints. There is normally one transaction within a flow.

cache timeout inactive

This command controls the aging behavior of the normal type of cache. If a flow has not seen any activity for a specified amount of time, that flow will be aged out. By default, this timeout is 15 seconds, but this value can be adjusted depending on the type of traffic expected.

If a large number of short-lived flows is consuming many cache entries, reducing the inactive timeout can reduce this overhead. If a large number of flows frequently get aged out before they have finished collecting their data, increasing this timeout can result in better flow correlation.

cache timeout update

This command controls the periodic updates sent by the permanent type of cache. This behavior is similar to the active timeout, except that it does not result in the removal of the cache entry from the cache. By default, this timer value is 1800 seconds (30 minutes).

cache timeout synchronized *interval* [**export-spread** [*spread-interval*]]

This command configures export spreading on a synchronized cache. As asynchronous monitors need to aggregate the data in a few seconds, you can enable and configure export spreading only when you configure the synchronized interval timeout value to more than 10 seconds. Export spreading might start a couple of seconds after the interval ends in order to complete the aggregation. No export spreading option is visible on the CLI if the synchronized interval timeout value is lower than 10 seconds. The default export spread interval is 30 seconds.

cache type immediate

This command specifies the immediate cache type. This type of cache will age out every record as soon as it is created, with the result that every flow contains just one packet. The commands that display the cache contents will provide a history of the packets seen.

The use of this cache type is appropriate when very small flows are expected and a minimum amount of latency between analyzing a packet and exporting a report is desired. We recommend using this command when you are sampling packet chunks because the number of packets per flow is typically very low.

**Caution**

This command may result in a large amount of export data that can overload low speed links and overwhelm any systems to which you are exporting. We recommended that you configure sampling to reduce the number of packets seen.

**Note**

The timeout settings have no effect for the immediate cache type.

cache type normal

This command specifies the normal cache type. This is the default cache type. The entries in the cache will be aged out according to the **timeout active** *seconds* and **timeout inactive** *seconds* settings. When a cache entry is aged out, it is removed from the cache and exported via any exporters configured for the monitor associated with the cache.

cache type permanent

This command specifies the permanent cache type. This type of cache never ages out any flows. This cache type is useful when the number of flows you expect to see has a limit and there is a need to keep long-term statistics on the router. For example, if the only key field is IP TOS, a limit of 256 flows can be seen, so to monitor the long-term usage of the IP TOS field, a permanent cache can be used. Update messages are exported via any exporters configured for the monitor associated with this cache in accordance with the **timeout update** *seconds* setting.

**Note**

When a cache becomes full, new flows will not be monitored. If this occurs, a “Flows not added” statistic will appear in the cache statistics.

**Note**

A permanent cache uses update counters rather than delta counters. This means that when a flow is exported, the counters represent the totals seen for the full lifetime of the flow and not the additional packets and bytes seen since the last export was sent.

Examples

The following example shows how to configure the number of entries for the flow monitor cache:

```
Device(config)# flow monitor FLOW-MONITOR-1
Device(config-flow-monitor)# cache entries 16
```

The following example shows how to configure the active timeout for the flow monitor cache:

```
Device(config)# flow monitor FLOW-MONITOR-1
Device(config-flow-monitor)# cache timeout active 4800
```

The following example shows how to configure the inactive timer for the flow monitor cache:

```
Device(config)# flow monitor FLOW-MONITOR-1
Device(config-flow-monitor)# cache timeout inactive 3000
```

The following example shows how to configure the permanent cache update timeout:

```
Device(config)# flow monitor FLOW-MONITOR-1
Device(config-flow-monitor)# cache timeout update 5000
```

The following example shows how to enable and configure export spreading where the synchronized interval timeout value is 12 seconds and the export spread interval is 5 seconds:

```
Device(config)# flow monitor FLOW-MONITOR-1
Device(config-flow-monitor)# cache type synchronized
Device(config-flow-monitor)# cache timeout synchronized 12 export-spread 5
```

The following example shows how to configure a normal cache:

```
Device(config)# flow monitor FLOW-MONITOR-1
Device(config-flow-monitor)# cache type normal
```

The following example shows how to configure a permanent cache:

```
Device(config)# flow monitor FLOW-MONITOR-1
Device(config-flow-monitor)# cache type permanent
```

The following example shows how to configure an immediate cache:

```
Device(config)# flow monitor FLOW-MONITOR-1
Device(config-flow-monitor)# cache type immediate
```

Related Commands

Command	Description
flow monitor	Creates a flow monitor, and enters Flexible NetFlow flow monitor configuration mode.

clear flow exporter

To clear the statistics for a Flexible NetFlow flow exporter, use the **clear flow exporter** command in privileged EXEC mode.

clear flow exporter {**name** *exporter-name* **statistics** | **statistics**}

Syntax Description

name	Specifies the name of a flow exporter.
<i>exporter-name</i>	Name of a flow exporter that was previously configured.
statistics	Clears the flow exporter statistics.

Command Modes

Privileged EXEC (#)

Command History

Release	Modification
12.4(9)T	This command was introduced.
12.2(31)SB2	This command was integrated into Cisco IOS Release 12.2(31)SB2.
12.0(33)S	This command was modified. Support for this command was implemented on the Cisco 12000 series routers.
12.2(33)SRC	This command was modified. Support for this command was implemented on the Cisco 7200 series routers.
12.2(33)SRE	This command was modified. Support for this command was implemented on the Cisco 7300 Network Processing Engine (NPE) series routers.
12.2(50)SY	This command was integrated into Cisco IOS Release 12.2(50)SY.
Cisco IOS XE Release 3.2SE	This command was integrated into Cisco IOS XE Release 3.2SE.

Examples

The following example clears the statistics for all of the flow exporters configured on the router:

```
Router# clear flow exporter statistics
```

The following example clears the statistics for the flow exporter named FLOW-EXPORTER-1:

```
Router# clear flow exporter name FLOW-EXPORTER-1 statistics
```

Related Commands

Command	Description
debug flow exporter	Enables debugging output for flow exporters.

clear flow monitor

To clear a Flexible NetFlow flow monitor, flow monitor cache, or flow monitor statistics and to force the export of the data in the flow monitor cache, use the **clear flow monitor** command in privileged EXEC mode.

clear flow monitor name *monitor-name* [{**cache** [**force-export**] | **force-export** | **statistics**}]

Syntax Description

name	Specifies the name of a flow monitor.
<i>monitor-name</i>	Name of a flow monitor that was previously configured.
cache	(Optional) Clears the flow monitor cache information.
force-export	(Optional) Forces the export of the flow monitor cache statistics.
statistics	(Optional) Clears the flow monitor statistics.

Command Modes

Privileged EXEC (#)

Command History

Release	Modification
12.4(9)T	This command was introduced.
12.2(31)SB2	This command was integrated into Cisco IOS Release 12.2(31)SB2.
12.0(33)S	This command was modified. Support for this command was implemented on the Cisco 12000 series routers.
12.2(33)SRC	This command was modified. Support for this command was implemented on the Cisco 7200 series routers in Cisco IOS Release 12.2(33)SRC.
12.2(33)SRE	This command was modified. Support for this command was implemented on the Cisco 7300 Network Processing Engine (NPE) series routers.
12.2(50)SY	This command was integrated into Cisco IOS Release 12.2(50)SY.
Cisco IOS XE Release 3.2SE	This command was integrated into Cisco IOS XE Release 3.2SE.

Usage Guidelines

cache

This keyword removes all entries from the flow monitor cache. These entries will not be exported and the data gathered in the cache will be lost.



Note The statistics for the cleared cache entries are maintained.

force-export

This keyword removes all entries from the flow monitor cache and exports them via all flow exporters assigned to the flow monitor. This action can result in a short-term increase in CPU usage. Use with caution.



Note The statistics for the cleared cache entries are maintained.

statistics

This keyword clears the statistics for this flow monitor.



Note The “Current entries” statistic will not be cleared because this is an indicator of how many entries are in the cache and the cache is not cleared with this command.

Examples

The following example clears the statistics and cache entries for the flow monitor named FLOW-MONITOR-1:

```
Router# clear flow monitor name FLOW-MONITOR-1
```

The following example clears the statistics and cache entries for the flow monitor named FLOW-MONITOR-1 and forces an export:

```
Router# clear flow monitor name FLOW-MONITOR-1 force-export
```

The following example clears the cache for the flow monitor named FLOW-MONITOR-1 and forces an export:

```
Router# clear flow monitor name FLOW-MONITOR-1 cache force-export
```

The following example clears the statistics for the flow monitor named FLOW-MONITOR-1:

```
Router# clear flow monitor name FLOW-MONITOR-1 statistics
```

Related Commands

Command	Description
debug flow monitor	Enables debugging output for flow monitors.

clear sampler

To clear the statistics for a Flexible NetFlow flow sampler, use the **clear sampler** command in privileged EXEC mode.

```
clear sampler [name] [sampler-name]
```

Syntax Description	name	(Optional) Specifies the name of a flow sampler.
	sampler-name	(Optional) Name of a flow sampler that was previously configured.

Command Modes

Privileged EXEC (#)

Command History

Release	Modification
12.4(9)T	This command was introduced.
12.2(31)SB2	This command was integrated into Cisco IOS Release 12.2(31)SB2.
12.0(33)S	This command was modified. Support for this command was implemented on the Cisco 12000 series routers.
12.2(33)SRC	This command was modified. Support for this command was implemented on the Cisco 7200 series routers.
12.2(33)SRE	This command was modified. Support for this command was implemented on the Cisco 7300 Network Processing Engine (NPE) series routers.
12.2(50)SY	This command was integrated into Cisco IOS Release 12.2(50)SY.
Cisco IOS XE Release 3.2SE	This command was integrated into Cisco IOS XE Release 3.2SE.

Examples

The following example clears the sampler statistics for all flow samplers configured on the router:

```
Router# clear sampler
```

The following example clears the sampler statistics for the flow sampler named SAMPLER-1:

```
Router# clear sampler name SAMPLER-1
```

Related Commands

Command	Description
debug sampler	Enables debugging output for flow samplers.

collect application http

To configure one of the HTTP application fields as a nonkey field for a flow record, use the **collect application http host** command in flow record configuration mode. To disable the use of the HTTP application fields as a key field for a flow record, use the **no** form of this command.

```
collect application http {host | uri statistics}
no collect application http {host | uri statistics}
```

Syntax Description	This command has no arguments or keywords.
Command Default	The HTTP application fields are not configured as a nonkey field.
Command Modes	Flow record configuration (config-flow-record)

Command History	Release	Modification
	15.2(4)S	This command was introduced.
	Cisco IOS XE Release 3.7S	This command was integrated into Cisco IOS XE Release 3.7S.
	15.2(4)M2	This command was integrated into Cisco IOS Release 15.2(4)M2 for MACE.
	15.3(1)T	This command was integrated into Cisco IOS Release 15.3(1)T for MACE.

Usage Guidelines

This command can be used with Flexible NetFlow, MACE (Measurement, Aggregation, and Correlation Engine), and Performance Monitor. These products use different commands to enter the configuration mode in which you issue this command, however the mode prompt is the same for both products. For Performance Monitor, you must first enter the **flow record type performance-monitor** command before you can use this command.

Because the mode prompt is the same for all three products, here we refer to the command mode for these products as flow record configuration mode. However, for Flexible NetFlow, the mode is also known as Flexible NetFlow flow record configuration mode; and for Performance Monitor, the mode is also known as Performance Monitor flow record configuration mode.

The **collect** commands are used to configure nonkey fields for the flow monitor record and to enable capturing the values in the fields for the flow created with the record. The values in nonkey fields are added to flows to provide additional information about the traffic in the flows. A change in the value of a nonkey field does not create a new flow. In most cases the values for nonkey fields are taken from only the first packet in the flow.

Examples

The following example configures the HTTP application host as a nonkey field for Flexible Netflow:

```
Router(config)# flow record RECORD-1
Router(config-flow-record)# collect application http host
```

Cisco Performance Monitor in Cisco IOS Release 15.2(4)S and Cisco IOS XE Release 3.7S

The following example configures the HTTP application host as a nonkey field for Performance Monitor:

```
Router(config)# flow record type performance-monitor RECORD-1
Router(config-flow-record)# collect application http host
```

MACE in Cisco IOS Release 15.2(4)M2 and Cisco IOS Release 15.3(1)T

The following example configures the HTTP application URI statistics as a nonkey field for Performance Monitor:

```
Router(config)# flow record type mace RECORD-1
Router(config-flow-record)# collect application http uri statistics
```

Related Commands

Command	Description
flow record	Creates a flow record, and enters Flexible NetFlow flow record configuration mode.
flow record type performance-monitor	Creates a flow record, and enters Performance Monitor flow record configuration mode.
flow record type mace	Creates a flow record, and enters MACE flow record configuration mode.

collect application name

To configure the use of the application name as a nonkey field for a flow record, use the **collect application name** command in flow record configuration mode. To disable the use of the application name as a nonkey field for a flow record, use the **no** form of this command.

collect application name
no collect application name

Syntax Description This command has no arguments or keywords.

Command Default The application name is not configured as a non-key field.

Command Modes Flow record configuration (config-flow-record)

Release	Modification
15.0(1)M	This command was introduced.
15.2(2)T	This command was integrated into Cisco IOS Release 15.2(2)T for Cisco Performance Monitor.
Cisco IOS XE Release 3.5S	This command was integrated into Cisco IOS XE Release 3.5S for Cisco Performance Monitor.
15.2(3)T	This command was integrated into Cisco IOS Release 15.2(3)T for Cisco Performance Monitor.

Usage Guidelines This command can be used with both Flexible NetFlow and Performance Monitor. These products use different commands to enter the configuration mode in which you issue this command, however the mode prompt is the same for both products. For Performance Monitor, you must first enter the **flow record type performance-monitor** command before you can use this command.

Because the mode prompt is the same for both products, here we refer to the command mode for both products as flow record configuration mode. However, for Flexible NetFlow, the mode is also known as Flexible NetFlow flow record configuration mode; and for Performance Monitor, the mode is also known as Performance Monitor flow record configuration mode.

A flow record requires at least one key field before it can be used in a flow monitor. The key fields differentiate flows, with each flow having a unique set of values for the key fields. The key fields are defined using the **match** command.

Examples

The following example configures the application name as a nonkey field:

```
Router(config)# flow record FLOW-RECORD-1
Router(config-flow-record)# collect application name
```

Cisco Performance Monitor in Cisco IOS Release 15.2(2)T and XE 3.5S

The following example configures the application name as a nonkey field:

```
Router(config)# flow record type performance-monitor RECORD-1
Router(config-flow-record)# collect application name
```

Related Commands

Command	Description
flow record	Creates a flow record, and enters Flexible NetFlow flow record configuration mode.
flow record type performance-monitor	Creates a flow record, and enters Performance Monitor flow record configuration mode.
match application name	Configures the use of application name as a key field for a Flexible NetFlow flow record.

collect application nntp

To configure the NNTP application group name field as a nonkey field for a flow record, use the **collect application nntp group-name** command in flow record configuration mode. To disable the use the application fields as a key field for a flow record, use the **no** form of this command.

collect application nntp group-name
no collect application nntp group-name

Syntax Description This command has no arguments or keywords.

Command Default The application version field is not configured as a nonkey field.

Command Modes Flow record configuration (config-flow-record)

Release	Modification
15.2(4)S	This command was introduced.
Cisco IOS XE Release 3.7S	This command was integrated into Cisco IOS XE Release 3.7S.

Usage Guidelines This command can be used with both Flexible NetFlow and Performance Monitor. These products use different commands to enter the configuration mode in which you issue this command, however the mode prompt is the same for both products. For Performance Monitor, you must first enter the **flow record type performance-monitor** command before you can use this command.

Because the mode prompt is the same for both products, here we refer to the command mode for both products as flow record configuration mode. However, for Flexible NetFlow, the mode is also known as Flexible NetFlow flow record configuration mode; and for Performance Monitor, the mode is also known as Performance Monitor flow record configuration mode.

The Flexible NetFlow **collect** commands are used to configure nonkey fields for the flow monitor record and to enable capturing the values in the fields for the flow created with the record. The values in nonkey fields are added to flows to provide additional information about the traffic in the flows. A change in the value of a nonkey field does not create a new flow. In most cases the values for nonkey fields are taken from only the first packet in the flow.

Examples

The following example configures the NNTP application group name as a nonkey field for Flexible Netflow:

```
Router(config)# flow record RECORD-1
Router(config-flow-record)# collect application nntp group-name
```

Cisco Performance Monitor in Cisco IOS Release 15.2(4)S and Cisco IOS XE Release 3.7S

The following example configures the NNTP application group name as a nonkey field for Performance Monitor:


```
Router(config)# flow record type performance-monitor RECORD-1
Router(config-flow-record)# collect application nntp group-name
```

Related Commands

Command	Description
flow record	Creates a flow record, and enters Flexible NetFlow flow record configuration mode.
flow record type performance-monitor	Creates a flow record, and enters Performance Monitor flow record configuration mode.

collect application pop3

To configure the POP3 application server field as a nonkey field for a flow record, use the **collect application pop3 server** command in flow record configuration mode. To disable the use the application fields as a key field for a flow record, use the **no** form of this command.

collect application pop3 server
no collect application pop3 server

Syntax Description This command has no arguments or keywords.

Command Default The application version field is not configured as a nonkey field.

Command Modes Flow record configuration (config-flow-record)

Command History

Release	Modification
Cisco IOS XE Release 3.7S	This command was introduced.

Usage Guidelines

The fields collected by this command can only be extracted using the IPFIX export protocol.

This command can be used with both Flexible NetFlow and Performance Monitor. These products use different commands to enter the configuration mode in which you issue this command, however the mode prompt is the same for both products. For Performance Monitor, you must first enter the **flow record type performance-monitor** command before you can use this command.

Because the mode prompt is the same for both products, here we refer to the command mode for both products as flow record configuration mode. However, for Flexible NetFlow, the mode is also known as Flexible NetFlow flow record configuration mode; and for Performance Monitor, the mode is also known as Performance Monitor flow record configuration mode.

The Flexible NetFlow **collect** commands are used to configure nonkey fields for the flow monitor record and to enable capturing the values in the fields for the flow created with the record. The values in nonkey fields are added to flows to provide additional information about the traffic in the flows. A change in the value of a nonkey field does not create a new flow. In most cases the values for nonkey fields are taken from only the first packet in the flow.

Examples

The following example configures the POP3 application server as a nonkey field for Flexible Netflow:

```
Router(config)# flow record RECORD-1
Router(config-flow-record)# collect application pop3 server
```

Cisco Performance Monitor in Cisco IOS Release 15.2(4)S and Cisco IOS XE Release 3.7S

The following example configures the POP3 application server as a nonkey field for Performance Monitor:

```
Router(config)# flow record type performance-monitor RECORD-1
```

```
Router(config-flow-record)# collect application pop3 server
```

Related Commands

Command	Description
flow record	Creates a flow record, and enters Flexible NetFlow flow record configuration mode.
flow record type performance-monitor	Creates a flow record, and enters Performance Monitor flow record configuration mode.

collect application rtsp

To configure the RTSP application hostname field as a nonkey field for a flow record, use the **collect application rtsp host-name** command in flow record configuration mode. To disable the use the application fields as a key field for a flow record, use the **no** form of this command.

collect application rtsp host-name
no collect application rtsp host-name

Syntax Description This command has no arguments or keywords.

Command Default The application version field is not configured as a nonkey field.

Command Modes Flow record configuration (config-flow-record)

Release	Modification
Cisco IOS XE Release 3.7S	This command was introduced.

Usage Guidelines The fields collected by this command can only be extracted using the IPFIX export protocol.

This command can be used with both Flexible NetFlow and Performance Monitor. These products use different commands to enter the configuration mode in which you issue this command, however the mode prompt is the same for both products. For Performance Monitor, you must first enter the **flow record type performance-monitor** command before you can use this command.

Because the mode prompt is the same for both products, here we refer to the command mode for both products as flow record configuration mode. However, for Flexible NetFlow, the mode is also known as Flexible NetFlow flow record configuration mode; and for Performance Monitor, the mode is also known as Performance Monitor flow record configuration mode.

The Flexible NetFlow **collect** commands are used to configure nonkey fields for the flow monitor record and to enable capturing the values in the fields for the flow created with the record. The values in nonkey fields are added to flows to provide additional information about the traffic in the flows. A change in the value of a nonkey field does not create a new flow. In most cases the values for nonkey fields are taken from only the first packet in the flow.

Examples

The following example configures the RTSP application hostname as a nonkey field for Flexible Netflow:

```
Router(config)# flow record RECORD-1
Router(config-flow-record)# collect application rtsp host-name
```

Cisco Performance Monitor in Cisco IOS Release 15.2(4)S and Cisco IOS XE Release 3.7S

The following example configures the RTSP application hostname as a nonkey field for Performance Monitor:

```
Router(config)# flow record type performance-monitor RECORD-1  
Router(config-flow-record)# collect application rtsp host-name
```

Related Commands

Command	Description
flow record	Creates a flow record, and enters Flexible NetFlow flow record configuration mode.
flow record type performance-monitor	Creates a flow record, and enters Performance Monitor flow record configuration mode.

collect application sip

To configure the SIP application destination or source field as a nonkey field for a flow record, use the **collect application sip** command in flow record configuration mode. To disable the use the application fields as a key field for a flow record, use the **no** form of this command.

```
collect application sip {destination | source}
no collect application sip {destination | source}
```

Syntax Description This command has no arguments or keywords.

Command Default The application version field is not configured as a nonkey field.

Command Modes Flow record configuration (config-flow-record)

Release	Modification
Cisco IOS XE Release 3.7S	This command was introduced.

Usage Guidelines The fields collected by this command can only be extracted using the IPFIX export protocol.

This command can be used with both Flexible NetFlow and Performance Monitor. These products use different commands to enter the configuration mode in which you issue this command, however the mode prompt is the same for both products. For Performance Monitor, you must first enter the **flow record type performance-monitor** command before you can use this command.

Because the mode prompt is the same for both products, here we refer to the command mode for both products as flow record configuration mode. However, for Flexible NetFlow, the mode is also known as Flexible NetFlow flow record configuration mode; and for Performance Monitor, the mode is also known as Performance Monitor flow record configuration mode.

The Flexible NetFlow **collect** commands are used to configure nonkey fields for the flow monitor record and to enable capturing the values in the fields for the flow created with the record. The values in nonkey fields are added to flows to provide additional information about the traffic in the flows. A change in the value of a nonkey field does not create a new flow. In most cases the values for nonkey fields are taken from only the first packet in the flow.

Examples

The following example configures the SIP application source as a nonkey field for Flexible Netflow:

```
Router(config)# flow record RECORD-1
Router(config-flow-record)# collect application sip source
```

Cisco Performance Monitor in Cisco IOS Release 15.2(4)S and Cisco IOS XE Release 3.7S

The following example configures the application SMTP hostname as a nonkey field for Performance Monitor:

```
Router(config)# flow record type performance-monitor RECORD-1
```

```
Router(config-flow-record)# collect application sip source
```

Related Commands

Command	Description
flow record	Creates a flow record, and enters Flexible NetFlow flow record configuration mode.
flow record type performance-monitor	Creates a flow record, and enters Performance Monitor flow record configuration mode.

collect application smtp

To configure the SMTP application server or sender field as a nonkey field for a flow record, use the **collect application smtp** command in flow record configuration mode. To disable the use of the application fields as a key field for a flow record, use the **no** form of this command.

```
collect application smtp {sender | server}
no collect application smtp {sender | server}
```

Syntax Description This command has no arguments or keywords.

Command Default The application version field is not configured as a nonkey field.

Command Modes Flow record configuration (config-flow-record)

Release	Modification
Cisco IOS XE Release 3.7S	This command was introduced.

Usage Guidelines The fields collected by this command can only be extracted using the IPFIX export protocol.

This command can be used with both Flexible NetFlow and Performance Monitor. These products use different commands to enter the configuration mode in which you issue this command, however the mode prompt is the same for both products. For Performance Monitor, you must first enter the **flow record type performance-monitor** command before you can use this command.

Because the mode prompt is the same for both products, here we refer to the command mode for both products as flow record configuration mode. However, for Flexible NetFlow, the mode is also known as Flexible NetFlow flow record configuration mode; and for Performance Monitor, the mode is also known as Performance Monitor flow record configuration mode.

The Flexible NetFlow **collect** commands are used to configure nonkey fields for the flow monitor record and to enable capturing the values in the fields for the flow created with the record. The values in nonkey fields are added to flows to provide additional information about the traffic in the flows. A change in the value of a nonkey field does not create a new flow. In most cases the values for nonkey fields are taken from only the first packet in the flow.

Examples

The following example configures the SMTP application server as a nonkey field for Flexible Netflow:

```
Router(config)# flow record RECORD-1
Router(config-flow-record)# collect application smtp server
```

Cisco Performance Monitor in Cisco IOS Release 15.2(4)S and Cisco IOS XE Release 3.7S

The following example configures the SMTP application server as a nonkey field for Performance Monitor:

```
Router(config)# flow record type performance-monitor RECORD-1
```



```
Router(config-flow-record)# collect application smtp server
```

Related Commands

Command	Description
flow record	Creates a flow record, and enters Flexible NetFlow flow record configuration mode.
flow record type performance-monitor	Creates a flow record, and enters Performance Monitor flow record configuration mode.

collect connection

To configure various connection information fields as a nonkey field for a flow record, use the **collect connection** command in flow record configuration mode. To disable the use of the connection information fields as a nonkey field for a flow record, use the **no** form of this command.

```
collect connection {initiator | new-translations | sum-duration}
no collect connection {initiator | new-translations | sum-duration}
```

Syntax Description

initiator	Configures the connection initiator as a nonkey field.
new-translations	Configures the number of TCP or UDP connections which were opened during an observation period as a nonkey field.
sum-duration	Configures the total time in seconds for all of the TCP or UDP connections which were in use during an observation period as a nonkey field.

Command Default

Connection information fields are not configured as a nonkey field.

Command Modes

Flow record configuration (config-flow-record)

Command History

Release	Modification
Cisco IOS XE Release 3.4S	This command was introduced.
15.2(2)T	This command was integrated into Cisco IOS Release 15.2(2)T for Cisco Performance Monitor.
Cisco IOS XE Release 3.5S	This command was integrated into Cisco IOS XE Release 3.5S for Cisco Performance Monitor.

Usage Guidelines

This command can be used with both Flexible NetFlow and Performance Monitor. These products use different commands to enter the configuration mode in which you issue this command, however the mode prompt is the same for both products. For Performance Monitor, you must first enter the **flow record type performance-monitor** command before you can use this command.

Because the mode prompt is the same for both products, here we refer to the command mode for both products as flow record configuration mode. However, for Flexible NetFlow, the mode is also known as Flexible NetFlow flow record configuration mode; and for Performance Monitor, the mode is also known as Performance Monitor flow record configuration mode.

The **initiator** keyword provides the following information about the direction of the flow.

- 0x00=undefined
- 0x01=initiator - the flow source is initiator of the connection.
- 0x02=reverseInitiator - the flow destination is the initiator of the connection.

For the **new-translations** and **sum-duration** keywords, the observation period can be specified by the start and end timestamps for the flow.

The Flexible NetFlow **collect** commands are used to configure nonkey fields for the flow monitor record and to enable capturing the values in the fields for the flow created with the record. The values in nonkey fields are added to flows to provide additional information about the traffic in the flows. A change in the value of a nonkey field does not create a new flow. In most cases the values for nonkey fields are taken from only the first packet in the flow.

Examples

The following example configures information about the connection initiator as a nonkey field:

```
Router(config)# flow record FLOW-RECORD-1
Router(config-flow-record)# collect connection initiator
```

Cisco Performance Monitor in Cisco IOS Release 15.2(2)T and XE 3.5S

The following example configures information about the connection initiator as a nonkey field:

```
Router(config)# flow record type performance-monitor RECORD-1
Router(config-flow-record)# collect connection initiator
```

Related Commands

Command	Description
flow record	Creates a flow record, and enters Flexible NetFlow flow record configuration mode.
flow record type performance-monitor	Creates a flow record, and enters Performance Monitor flow record configuration mode.

collect counter

To configure the number of bytes or packets in a flow as a nonkey field for a flow record, use the **collect counter** command in Flexible NetFlow flow record configuration mode. To disable the use of the number of bytes or packets in a flow (counters) as a nonkey field for a flow record, use the **no** form of this command.

```
collect counter {bytes [{long | replicated [long] | squared long}] | packets [{long | replicated [long]}]}
```

```
no collect counter {bytes [{long | replicated [long] | squared long}] | packets [{long | replicated [long]}]}
```

Cisco Performance Monitor in Cisco IOS Release 15.1(3)T and 12.2(58)SE

```
collect counter {bytes [{long | rate}] | packets [{dropped [long] | long}]}
```

```
no collect counter {bytes [{long | rate}] | packets [{dropped [long] | long}]}
```

Cisco Catalyst 6500 Switches in Cisco IOS Release 12.2(50)SY

```
collect counter {bytes [long] | packets [long]}
```

```
no collect counter {bytes [long] | packets [long]}
```

Cisco IOS XE Release 3.2SE

```
no collect counter {bytes {layer2 long | long} | packets long}
```

```
no collect counter {bytes {layer2 long | long} | packets long}
```

Syntax Description

bytes	Configures the number of bytes seen in a flow as a nonkey field and enables collecting the total number of bytes from the flow.
layer 2 long	Enables collecting the total number of Layer 2 bytes or packets from the flow using a 64-bit counter rather than a 32-bit counter. For Cisco IOS XE Release 3.2SE, use the layer 2 long keywords rather than the long keyword.
long	(Optional) Enables collecting the total number of bytes or packets from the flow using a 64-bit counter rather than a 32-bit counter. For Cisco IOS XE Release 3.2SE, use the layer 2 long keywords rather than the long keyword.
replicated	Total number of replicated (multicast) IPv4 packets.
squared long	(Optional) Enables collecting the total of the square of the number of bytes from the flow.
packets	Configures the number of packets seen in a flow as a nonkey field and enables collecting the total number of packets from the flow.
rate	Configures the byte rate counter as a nonkey field.
dropped	Configures the dropped packet counter as a nonkey field.

Command Default

The number of bytes or packets in a flow is not configured as a nonkey field.

Command Modes

Flexible NetFlow flow record configuration (config-flow-record)

Command History	Release	Modification
	12.4(9)T	This command was introduced.
	12.2(31)SB2	This command was integrated into Cisco IOS Release 12.2(31)SB2.
	12.0(33)S	This command was modified. Support for this Cisco was implemented on the 12000 series routers.
	12.2(33)SRC	This command was modified. Support for this Cisco was implemented on the Cisco 7200 series routers in Cisco IOS Release 12.2(33)SRC.
	12.4(22)T	This command was modified. The replicated keyword was added.
	12.2(33)SRE	This command was modified. Support for this command was implemented on the Cisco 7300 Network Processing Engine (NPE) series routers.
	15.1(3)T	This command was modified for the Cisco Performance Monitor. The replicated and squared long keywords were removed and the rate and dropped keywords were added.
	12.2(58)SE	This command was modified for the Cisco Performance Monitor. The replicated and squared long keywords were removed and the rate and dropped keywords were added.
	12.2(50)SY	This command was modified. The replicated and squared long keywords were removed.
	Cisco IOS XE Release 3.2SE	This command was modified. The layer 2 long keyword combination was added. The replicated and squared long keywords were removed.

Usage Guidelines

This command can be used with both Flexible NetFlow and Performance Monitor. These products use different commands to enter the configuration mode in which you issue this command, however the mode prompt is the same for both products. For Flexible NetFlow, the mode is also known as Flexible NetFlow flow record configuration mode. For Performance Monitor, the mode is also known as Performance Monitor flow record configuration mode. Here we refer to them both as flow record configuration mode.

The Flexible NetFlow and Performance Monitor **collect** commands are used to configure nonkey fields for the flow monitor record and to enable capturing the values in the fields for the flow created with the record. The values in nonkey fields are added to flows to provide additional information about the traffic in the flows. A change in the value of a nonkey field does not create a new flow. In most cases the values for nonkey fields are taken from only the first packet in the flow.

Cisco Performance Monitor in Cisco IOS Release 15.1(3)T and 12.2(58)SE

The **rate** and **dropped** keywords were added and the **replicated** and **squared long** keywords were removed. You must first enter the **flow record type performance-monitor** command.

collect counter bytes

This command configures a 32-bit counter for the number of bytes seen in a flow.

collect counter packets

This command configures a 32-bit counter that is incremented for each packet seen in the flow. For extremely long flows it is possible for this counter to restart at 0 (wrap) when it reaches the limit of approximately 4

billion packets. On detection of a situation that would cause this counter to restart at 0, a flow monitor with a normal cache type exports the flow and starts a new flow.

collect counter packets long

This command configures a 64-bit counter that will be incremented for each packet seen in the flow. It is unlikely that a 64-bit counter will ever restart at 0.

collect counter bytes squared long

This counter can be used in conjunction with the byte and packet counters in order to calculate the variance of the packet sizes. Its value is derived from squaring each of the packet sizes in the flow and adding the results. This value can be used as part of a standard variance function.

The variance and standard deviation of the packet sizes for the flow can be calculated with the following formulas:

cbs: value from the **counter bytes squared** field

pkts: value from the **counter packets** field

bytes: value from the **counter bytes** field

Variance = $(cbs/pkts) - (bytes/pkts)^2$

Standard deviation = square root of Variance

Example 1:

Packet sizes of the flow: 100, 100, 100, 100

Counter packets: 4

Counter bytes: 400, mean packet size = 100

Counter bytes squared: 40,000

Variance = $(40,000/4) - (400/4)^2 = 0$

Standard Deviation = 0

Size = 100 +/- 0

Example 2:

Packet sizes of the flow: 50, 150, 50, 150

Counter packets: 4

Counter bytes: 400, mean packet size = 100

Counter bytes squared: 50,000

Variance = $(50,000/4) - (400/4)^2 = 2500$

Standard deviation = 50

Size = 100 +/- 50

Examples

The following example configures the total number of bytes in the flows as a nonkey field:

```
Router(config)# flow record FLOW-RECORD-1
Router(config-flow-record)# collect counter bytes
```

The following example configures the total number of bytes in the flows as a nonkey field using a 64-bit counter:

```
Router(config)# flow record FLOW-RECORD-1
Router(config-flow-record)# collect counter bytes long
```

The following example configures the sum of the number of bytes of each packet in the flow squared as a nonkey field:

```
Router(config)# flow record FLOW-RECORD-1
Router(config-flow-record)# collect counter bytes squared long
```

The following example configures the total number of packets from the flows as a nonkey field:

```
Router(config)# flow record FLOW-RECORD-1
Router(config-flow-record)# collect counter packets
```

The following example configures the total number of packets from the flows as a nonkey field using a 64-bit counter:

```
Router(config)# flow record FLOW-RECORD-1
Router(config-flow-record)# collect counter packets long
```

The following example configures the total number of packets from the flows as a nonkey field using a 64-bit counter:

```
Router(config)# flow record type performance-monitor RECORD-1
Router(config-flow-record)# collect counter packets long
```

Related Commands

Command	Description
flow record	Creates a flow record for Flexible NetFlow.
flow record type performance-monitor	Creates a flow record for Performance Monitor.

collect datalink dot1q vlan

To configure the 802.1Q (dot1q) VLAN ID as a non-key field for a Flexible NetFlow flow record, use the **collectdatalinkdot1qvlan** command in Flexible NetFlow flow record configuration mode. To disable the use of the 802.1Q VLAN ID value as a nonkey field for a Flexible NetFlow flow record, use the **no** form of this command.

```
collect datalink dot1q vlan {input | output}
no collect datalink dot1q vlan {input | output}
```

Syntax Description

input	Configures the VLAN ID of traffic being received by the router as a nonkey field.
output	Configures the VLAN ID of traffic being transmitted by the router as a nonkey field.

Command Default

The 802.1Q VLAN ID is not configured as a nonkey field.

Command Modes

Flexible NetFlow flow record configuration (config-flow-record)

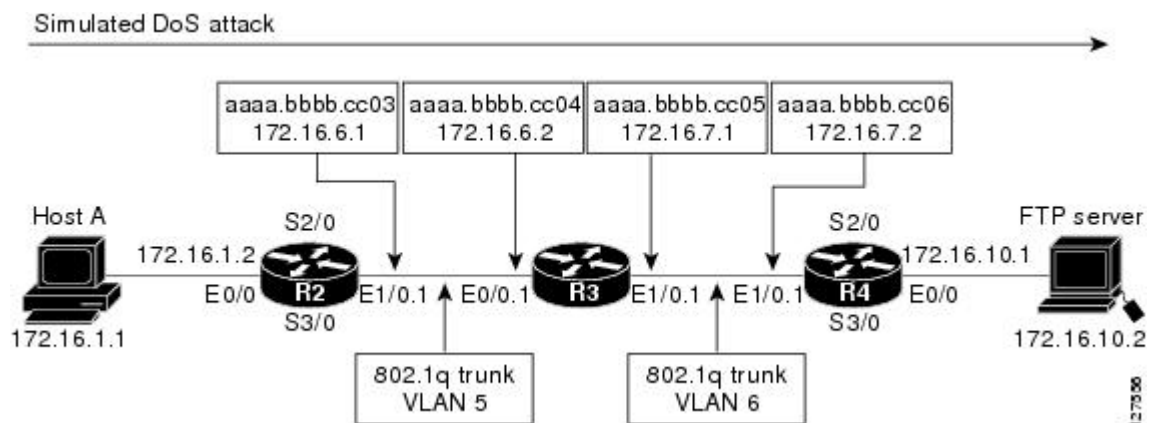
Command History

Release	Modification
12.4(22)T	This command was introduced.
12.2(33)SRE	This command was integrated into Cisco IOS Release 12.2(33)SRE for the Cisco 7200 and Cisco 7300 Network Processing Engine (NPE) series routers.

Usage Guidelines

The **input** and **output** keywords of the **collectdatalinkdot1qvlan** command are used to specify the observation point that is used by the **collectdatalinkdot1qvlan** command to capture the 802.1q VLAN IDs from network traffic. For example, when you configure a flow record with the **collectdatalinkdot1qvlaninput** command to monitor the simulated denial of service (DoS) attack in the figure below and apply the flow monitor to which the flow record is assigned in either input (ingress) mode on interface Ethernet 0/0.1 on R3 or output (egress) mode on interface Ethernet 1/0.1 on R3, the observation point is always Ethernet 0/0.1 on R3. The 802.1q VLAN ID that is collected is 5.

Figure 4: Simulated DoS Attack (a)



The observation point of **collect** commands that do not have the input and/or output keywords is always the interface to which the flow monitor that contains the flow record with the **collect** commands is applied.

Examples

The following example configures the 802.1Q VLAN ID of traffic being received by the router as a nonkey field for a Flexible NetFlow flow record:

```
Router(config)# flow record FLOW-RECORD-1
Router(config-flow-record)# collect datalink dot1q vlan input
```

Related Commands

Command	Description
flow record	Creates a flow record.

collect datalink mac

To configure the use of MAC addresses as a nonkey field for a Flexible NetFlow flow record, use the **collectdatalinkmac** command in Flexible NetFlow flow record configuration mode. To disable the use of Layer 2 MAC addresses as a non-key field for a Flexible NetFlow flow record, use the **no** form of this command.

```
collect datalink mac {destination | source} address {input | output}
no collect datalink mac {destination | source} address {input | output}
```

Syntax Description

destination address	Configures the use of the destination MAC address as a non-key field.
source address	Configures the use of the source MAC address as a non-key field.
input	Packets received by the router.
output	Packets transmitted by the router.

Command Default

MAC addresses are not configured as a nonkey field.

Command Modes

Flexible NetFlow flow record configuration (config-flow-record)

Command History

Release	Modification
12.4(22)T	This command was introduced.
12.2(33)SRE	This command was integrated into Cisco IOS Release 12.2(33)SRE for the Cisco 7200 and Cisco 7300 Network Processing Engine (NPE) series routers.
15.2(2)T	This command was integrated into 15.2(2)T without the destination keyword for Cisco Performance Monitor.

Usage Guidelines

This command can be used with both Flexible NetFlow and Performance Monitor. These products use different commands to enter the configuration mode in which you issue this command, however the mode prompt is the same for both products. For Performance Monitor, you must first enter the **flow record type performance-monitor** command before you can use this command.

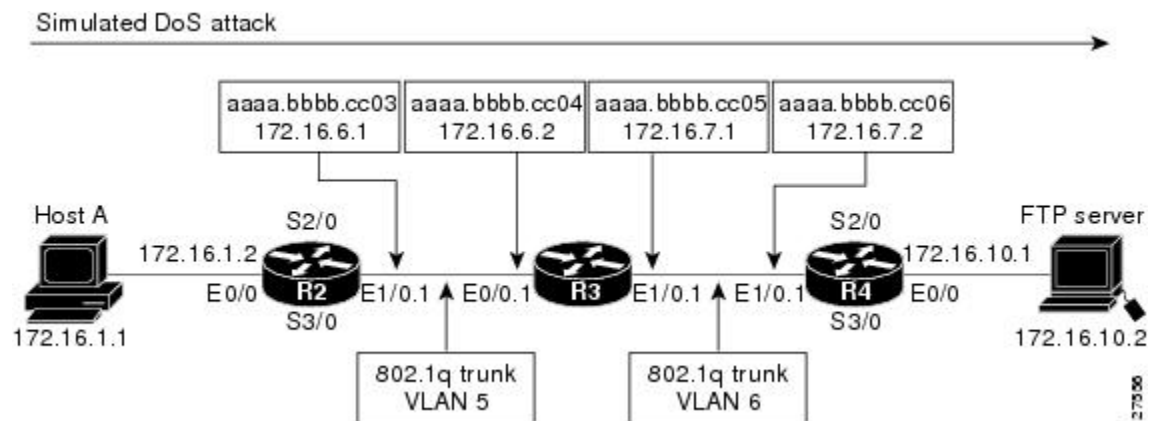
Because the mode prompt is the same for both products, here we refer to the command mode for both products as flow record configuration mode. However, for Flexible NetFlow, the mode is also known as Flexible NetFlow flow record configuration mode; and for Performance Monitor, the mode is also known as Performance Monitor flow record configuration mode.

The **collect** commands are used to configure nonkey fields for the flow monitor record and to enable capturing the values in the fields for the flow created with the record. The values in nonkey fields are added to flows to provide additional information about the traffic in the flows. A change in the value of a nonkey field does not create a new flow. In most cases the values for nonkey fields are taken from only the first packet in the flow.

The **input** and **output** keywords of the **collectdatalinkmac** command are used to specify the observation point that is used by the **collectdatalinkmac** command to capture the MAC addresses from network traffic. For example, when you configure a flow record with the **collectdatalinkmac destination address input** command

to monitor the simulated denial of service (DoS) attack in the figure below and apply the flow monitor to which the flow record is assigned in either input (ingress) mode on interface Ethernet 0/0.1 on R3 or output (egress) mode on interface Ethernet 1/0.1 on R3, the observation point is always Ethernet 0/0.1 on R3. The destination MAC address that is collected is aaaa.bbbb.cc04.

Figure 5: Simulated DoS Attack (b)



When the destination output mac address is configured, the value is the destination mac address of the output packet, even if the monitor the flow record is applied to is input only.

When the destination input mac address is configured, the value is the destination mac address of the input packet, even if the monitor the flow record is applied to is output only.

When the source output mac address is configured, the value is the source mac address of the output packet, even if the monitor the flow record is applied to is input only.

When the source input mac address is configured, the value is the source mac address of the input packet, even if the monitor the flow record is applied to is output only.

Examples

The following example configures the use of the destination MAC address of packets that are received by the router as a nonkey field for a Flexible NetFlow flow record:

```
Router(config)# flow record FLOW-RECORD-1
Router(config-flow-record)# collect datalink mac destination address input
```

The following example configures the use of the source MAC addresses of packets that are transmitted by the router as a nonkey field for a Flexible NetFlow flow record:

```
Router(config)# flow record FLOW-RECORD-1
Router(config-flow-record)# collect datalink mac source address output
```

Cisco Performance Monitor in Cisco IOS Release 15.2(2)T

The following example configures the use of the source MAC addresses of packets that are transmitted by the router as a nonkey field for a Performance Monitor flow record: :

```
Router(config)# flow record type performance-monitor RECORD-1
Router(config-flow-record)# collect datalink mac source address output
```

Related Commands

Command	Description
flow record	Creates a flow record, and enters Flexible NetFlow flow record configuration mode.
flow record type performance-monitor	Creates a flow record, and enters Performance Monitor flow record configuration mode.

collect flow

To configure the flow direction, the flow sampler ID number, or reason why the flow ended as a nonkey field for a flow record, use the **collect flow** command in flow record configuration mode. To disable the use of the flow direction and the flow sampler ID number as a nonkey field for a flow record, use the **no** form of this command.

```
collect flow {direction | sampler}
no collect flow {direction | sampler}
```

Cisco IOS Release 15.1(4)M1

```
collect flow direction
no collect flow direction
```

Syntax Description

direction	Configures the flow direction as a nonkey field and enables the collection of the direction in which the flow was monitored.
sampler	Configures the flow sampler ID as a nonkey field and enables the collection of the ID of the sampler that is assigned to the flow monitor.

Command Default

The flow direction and the flow sampler ID number are not configured as nonkey fields.

Command Modes

flow record configuration (config-flow-record)

Command History

Release	Modification
12.4(9)T	This command was introduced.
12.2(31)SB2	This command was integrated into Cisco IOS Release 12.2(31)SB2.
12.0(33)S	This command was implemented on the Cisco 12000 series routers.
12.2(33)SRC	Support for this command was added for Cisco 7200 series routers in Cisco IOS Release 12.2(33)SRC.
12.2(33)SRE	This command was integrated into Cisco IOS Release 12.2(33)SRE for the Cisco 7300 Network Processing Engine (NPE) series routers.
15.1(4)M1	This command was integrated into Cisco IOS Release 15.1(4)M1 with only the direction keyword.

Usage Guidelines

This command can be used with both Flexible NetFlow and Performance Monitor. These products use different commands to enter the configuration mode in which you issue this command, however the mode prompt is the same for both products. For Flexible NetFlow, the mode is also known as Flexible NetFlow flow record configuration mode. For Performance Monitor, the mode is also known as Performance Monitor flow record configuration mode. Here we refer to them both as flow record configuration mode.

The Flexible NetFlow and Performance Monitor **collect** commands are used to configure nonkey fields for the flow monitor record and to enable capturing the values in the fields for the flow created with the record.

The values in nonkey fields are added to flows to provide additional information about the traffic in the flows. A change in the value of a nonkey field does not create a new flow. In most cases the values for nonkey fields are taken from only the first packet in the flow.

collect flow direction

This field indicates the direction of the flow. This is of most use when a single flow monitor is configured for input and output flows. It can be used to find and eliminate flows that are being monitored twice, once on input and once on output. This field may also be used to match up pairs of flows in the exported data when the two flows are flowing in opposite directions.

collect flow sampler

This field contains the ID of the flow sampler used to monitor the flow. This is useful when more than one flow sampler is being used with different sampling rates. The flow exporter **option sampler-table** command exports options records with mappings of the flow sampler ID to sampling rate so the collector can calculate the scaled counters for each flow.

Examples

The following example configures the ID of the flow sampler that is assigned to the flow as a nonkey field:

```
Router(config)# flow record FLOW-RECORD-1
Router(config-flow-record)# collect flow sampler
```

Cisco Performance Monitor in Cisco IOS Release 15.1(4)M1

The following example configures the direction in which the flow was monitored as a nonkey field:

```
Router(config)# flow record type performance-monitor FLOW-RECORD-1
Router(config-flow-record)# collect flow direction
```

Related Commands

Command	Description
flow exporter	Creates a flow exporter
flow record	Creates a flow record for Flexible NetFlow.
flow record type performance-monitor	Creates a flow record for Performance Monitor.

collect interface

To configure the input and output interface as a nonkey field for a flow record, use the **collect interface** command in flow record configuration mode. To disable the use of the input and output interface as a nonkey field for a flow record, use the **no** form of this command.

```
collect interface {input | output}
no collect interface {input | output}
```

Cisco Catalyst 6500 Switches in Cisco IOS Release 12.2(50)SY

```
collect interface {input [physical] | output} [snmp]
no collect interface {input [physical] | output} [snmp]
```

Syntax Description

input	Configures the input interface as a nonkey field and enables collecting the input interface from the flows.
output	Configures the output interface as a nonkey field and enables collecting the output interface from the flows.

Command Default

The input and output interface is not configured as a nonkey field.

Command Modes

flow record configuration (config-flow-record)

Command History

Release	Modification
12.4(9)T	This command was introduced.
12.2(31)SB2	This command was integrated into Cisco IOS Release 12.2(31)SB2.
12.0(33)S	This command was implemented on the Cisco 12000 series routers.
12.2(33)SRC	This command was integrated into Cisco IOS Release 12.2(33)SRC and implemented on the Cisco 7200 series routers.
12.2(33)SRE	This command was integrated into Cisco IOS Release 12.2(33)SRE for the Cisco 7300 Network Processing Engine (NPE) series routers.
15.1(3)T	This command was integrated into Cisco IOS Release 15.1(3)T for Cisco Performance Monitor.
12.2(58)SE	This command was integrated into Cisco IOS Release 12.2(58)SE for Cisco Performance Monitor.
12.2(50)SY	This command was modified. The physical and snmp keywords were added in Cisco IOS Release 12.2(50)SY.
Cisco IOS XE Release 3.2SE	This command was integrated into Cisco IOS XE Release 3.2SE.

Usage Guidelines

This command can be used with both Flexible NetFlow and Performance Monitor. These products use different commands to enter the configuration mode in which you issue this command, however the mode prompt is the same for both products. For Flexible NetFlow, the mode is also known as Flexible NetFlow flow record configuration mode. For Performance Monitor, the mode is also known as Performance Monitor flow record configuration mode. Here we refer to them both as flow record configuration mode.

The Flexible NetFlow and Performance Monitor **collect** commands are used to configure nonkey fields for the flow monitor record and to enable capturing the values in the fields for the flow created with the record. The values in nonkey fields are added to flows to provide additional information about the traffic in the flows. A change in the value of a nonkey field does not create a new flow. In most cases the values for nonkey fields are taken from only the first packet in the flow.

Cisco Performance Monitor in Cisco IOS Release 15.1(3)T and 12.2(58)SE

You must first enter the **flowrecordtypeperformance-monitor** command.

Examples

The following example configures the input interface as a nonkey field:

```
Router(config)# flow record FLOW-RECORD-1
Router(config-flow-record)# collect interface input
```

The following example configures the output interface as a nonkey field:

```
Router(config)# flow record FLOW-RECORD-1
Router(config-flow-record)# collect interface output
```

Cisco Performance Monitor in Cisco IOS Release 15.1(3)T and 12.2(58)SE

The following example configures the input interface as a nonkey field:

```
Router(config)# flow record type performance-monitor RECORD-1
Router(config-flow-record)# collect interface input
```

Related Commands

Command	Description
flow record	Creates a flow record for Flexible NetFlow.
flow record type performance-monitor	Creates a flow record for Performance Monitor.

collect ipv4

To configure one or more of the IPv4 fields as a nonkey field for a flow record, use the **collectipv4** command in flow record configuration mode. To disable the use of one or more of the IPv4 fields as a nonkey field for a flow record, use the **no** form of this command.

```
collect ipv4 {dscp | header-length | id | option map | precedence | protocol | tos | version}
no collect ipv4 {dscp | header-length | id | option map | precedence | protocol | tos | version}
```

Cisco Performance Monitor in Cisco IOS Release 15.1(3)T and 12.2(58)SE

```
collect ipv4 dscp
no collect ipv4 dscp
```

Syntax Description

dscp	Configures the differentiated services code point (DSCP) field as a nonkey field and enables collecting the value in the IPv4 DSCP type of service (ToS) fields from the flows.
header-length	Configures the IPv4 header length flag as a nonkey field and enables collecting the value in the IPv4 header length (in 32-bit words) field from the flows.
id	Configures the IPv4 ID flag as a nonkey field and enables collecting the value in the IPv4 ID field from the flows.
option map	Configures the IPv4 options flag as a nonkey field and enables collecting the value in the bitmap representing which IPv4 options have been seen in the options field from the flows.
precedence	Configures the IPv4 precedence flag as a nonkey field and enables collecting the value in the IPv4 precedence (part of ToS) field from the flows.
protocol	Configures the IPv4 payload protocol field as a nonkey field and enables collecting the IPv4 value of the payload protocol field for the payload in the flows
tos	Configures the ToS field as a nonkey field and enables collecting the value in the IPv4 ToS field from the flows.
version	Configures the version field as a nonkey field and enables collecting the value in the IPv4 version field from the flows.

Command Default

The IPv4 fields are not configured as a nonkey field.

Command Modes

flow record configuration (config-flow-record)

Command History

Release	Modification
12.4(9)T	This command was introduced.
12.2(31)SB2	This command was integrated into Cisco IOS Release 12.2(31)SB2.
12.0(33)S	This command was implemented on the Cisco 12000 series routers.

Release	Modification
12.2(33)SRC	This command was integrated into Cisco IOS Release 12.2(33)SRC and implemented on the Cisco 7200 series routers.
12.2(33)SRE	This command was integrated into Cisco IOS Release 12.2(33)SRE for the Cisco 7300 Network Processing Engine (NPE) series routers.
15.1(3)T	This command was integrated into Cisco IOS Release 15.1(3)T for Cisco Performance Monitor with only the dscp keyword.
12.2(58)SE	This command was integrated into Cisco IOS Release 12.2(58)SE for Cisco Performance Monitor with only the dscp keyword.

Usage Guidelines

This command can be used with both Flexible NetFlow and Performance Monitor. These products use different commands to enter the configuration mode in which you issue this command, however the mode prompt is the same for both products. For Flexible NetFlow, the mode is also known as Flexible NetFlow flow record configuration mode. For Performance Monitor, the mode is also known as Performance Monitor flow record configuration mode. Here we refer to them both as flow record configuration mode.

The Flexible NetFlow and Performance Monitor **collect** commands are used to configure nonkey fields for the flow monitor record and to enable capturing the values in the fields for the flow created with the record. The values in nonkey fields are added to flows to provide additional information about the traffic in the flows. A change in the value of a nonkey field does not create a new flow. In most cases the values for nonkey fields are taken from only the first packet in the flow.



Note

Some of the keywords of the **collectipv4** command are documented as separate commands. All of the keywords for the **collectipv4** command that are documented separately start with **collectipv4**. For example, for information about configuring the IPv4 time-to-live (TTL) field as a nonkey field and collecting its value for a flow record, refer to the **collectipv4ttl** command.

Cisco Performance Monitor in Cisco IOS Release 15.1(3)T and 12.2(58)SE

Only the **dscp** keyword is available. You must first enter the **flowrecordtypeperformance-monitor** command.

Examples

The following example configures the DSCP field as a nonkey field:

```
Router(config)# flow record FLOW-RECORD-1
Router(config-flow-record)# collect ipv4 dscp
```

Cisco Performance Monitor in Cisco IOS Release 15.1(3)T and 12.2(58)SE

The following example configures the DSCP field as a nonkey field:

```
Router(config)# flow record type performance-monitor RECORD-1
Router(config-flow-record)# collect ipv4 dscp
```

Related Commands

Command	Description
flow record	Creates a flow record for Flexible NetFlow.
flow record type performance-monitor	Creates a flow record for Performance Monitor.

collect ipv4 destination

To configure the IPv4 destination address as a nonkey field for a flow record, use the **collectipv4destination** command in flow record configuration mode. To disable the use of an IPv4 destination address field as a nonkey field for a flow record, use the **no** form of this command.

```
collect ipv4 destination {address | {mask | prefix} [minimum-mask mask]}
no collect ipv4 destination {address | {mask | prefix} [minimum-mask mask]}
```

Cisco Performance Monitor in Cisco IOS Release 15.1(3)T and 12.2(58)SE

```
collect ipv4 destination mask [{minimum-mask mask}]
no collect ipv4 destination mask [{minimum-mask mask}]
```

Cisco Catalyst 6500 Switches in Cisco IOS Release 12.2(50)SY

```
collect ipv4 destination {mask | prefix}
no collect ipv4 destination {mask | prefix}
```

Syntax Description

address	Configures the IPv4 destination address as a nonkey field and enables collecting the value of the IPv4 destination address from the flows.
mask	Configures the IPv4 destination address mask as a nonkey field and enables collecting the value of the IPv4 destination address mask from the flows.
prefix	Configures the prefix for the IPv4 destination address as a nonkey field and enables collecting the value of the IPv4 destination address prefix from the flows.
minimum-mask <i>mask</i>	(Optional) Specifies the size, in bits, of the minimum mask. Range: 1 to 32.

Command Default

The IPv4 destination address is not configured as a nonkey field.

Command Modes

flow record configuration (config-flow-record)

Command History

Release	Modification
12.4(9)T	This command was introduced.
12.2(31)SB2	This command was integrated into Cisco IOS Release 12.2(31)SB2.
12.0(33)S	This command was implemented on the Cisco 12000 series routers.
12.2(33)SRC	This command was integrated into Cisco IOS Release 12.2(33)SRC and implemented on the Cisco 7200 series routers.
12.2(33)SRE	This command was integrated into Cisco IOS Release 12.2(33)SRE for the Cisco 7300 Network Processing Engine (NPE) series routers.
15.1(3)T	This command was integrated into Cisco IOS Release 15.1(3)T for Cisco Performance Monitor with only the mask and minimum-mask keywords.

Release	Modification
12.2(58)SE	This command was integrated into Cisco IOS Release 12.2(58)SE for Cisco Performance Monitor with only the maskandminimum-mask keywords.
12.2(50)SY	This command was modified. The addressand minimum-mask keywords were not supported in Cisco IOS Release 12.2(50)SY.

Usage Guidelines

This command can be used with both Flexible NetFlow and Performance Monitor. These products use different commands to enter the configuration mode in which you issue this command, however the mode prompt is the same for both products. For Flexible NetFlow, the mode is also known as Flexible NetFlow flow record configuration mode. For Performance Monitor, the mode is also known as Performance Monitor flow record configuration mode. Here we refer to them both as flow record configuration mode.

The Flexible NetFlow and Performance Monitor **collect** commands are used to configure nonkey fields for the flow monitor record and to enable capturing the values in the fields for the flow created with the record. The values in nonkey fields are added to flows to provide additional information about the traffic in the flows. A change in the value of a nonkey field does not create a new flow. In most cases the values for nonkey fields are taken from only the first packet in the flow.

Cisco Performance Monitor in Cisco IOS Release 15.1(3)T and 12.2(58)SE

Only the **maskandminimum-mask** keywords are available. You must first enter the **flowrecordtypeperformance-monitor** command.

Examples

The following example configures the IPv4 destination address prefix from the flows that have a prefix of 16 bits as a nonkey field:

```
Router(config)# flow record FLOW-RECORD-1
Router(config-flow-record)# collect ipv4 destination prefix minimum-mask 16
```

Cisco Performance Monitor in Cisco IOS Release 15.1(3)T and 12.2(58)SE

The following example configures the IPv4 destination address prefix from the flows that have a prefix of 16 bits as a nonkey field:

```
Router(config)# flow record type performance-monitor RECORD-1
Router(config-flow-record)# collect ipv4 destination prefix minimum-mask 16
```

Related Commands

Command	Description
flow record	Creates a flow record for Flexible NetFlow.
flow record type performance-monitor	Creates a flow record for Performance Monitor.

collect ipv4 fragmentation

To configure the IPv4 fragmentation flags and the IPv4 fragmentation offset as a nonkey field for a flow record, use the **collect ipv4 fragmentation** command in flow record configuration mode. To disable the use of the IPv4 fragmentation flags and the IPv4 fragmentation offset as a nonkey field for a flow record, use the **no** form of this command.

collect ipv4 fragmentation {flags | offset}

no collect ipv4 fragmentation {flags | offset}

Syntax Description

flags	Configures the IPv4 fragmentation flags as a nonkey field and enables collecting the value in the IPv4 fragmentation flag fields from the flows.
offset	Configures the IPv4 fragmentation offset value as a nonkey field and enables collecting the value in the IPv4 fragmentation offset field from the flows.

Command Default

The IPv4 fragmentation flags and the IPv4 fragmentation offset are not configured as nonkey fields.

Command Modes

Flow record configuration (config-flow-record)

Command History

Release	Modification
12.4(9)T	This command was introduced.
12.2(31)SB2	This command was integrated into Cisco IOS Release 12.2(31)SB2.
12.0(33)S	This command was implemented on the Cisco 12000 series routers.
12.2(33)SRC	Support for this command was added for Cisco 7200 series routers in Cisco IOS Release 12.2(33)SRC.
12.2(33)SRE	This command was integrated into Cisco IOS Release 12.2(33)SRE for the Cisco 7300 Network Processing Engine (NPE) series routers.

Usage Guidelines

The Flexible NetFlow collect commands are used to configure nonkey fields for the flow monitor record and to enable capturing the values in the fields for the flow created with the record. The values in nonkey fields are added to flows to provide additional information about the traffic in the flows. A change in the value of a nonkey field does not create a new flow. In most cases the values for nonkey fields are taken from only the first packet in the flow.

collect ipv4 fragmentation flags

This field collects the "don't fragment" and "more fragments" flags.

Bit 0: reserved, must be zero.

Bit 1: (DF) 0 = May Fragment, 1 = Don't Fragment

Bit 2: (MF) 0 = Last Fragment, 1 = More Fragments

Bits 3-7: (DC) Don't Care, value is irrelevant

```

 0   1   2   3   4   5   6   7
+---+---+---+---+---+---+---+---+
|   | D | M | D | D | D | D | D |
| 0 | F | F | C | C | C | C | C |
+---+---+---+---+---+---+---+---+

```

For more information on IPv4 fragmentation flags, see RFC 791 *Internet Protocol* at the following URL: <http://www.ietf.org/rfc/rfc791.txt>.

Examples

The following example configures the IPv4 fragmentation flags as a nonkey field:

```

Router(config)# flow record FLOW-RECORD-1
Router(config-flow-record)# collect ipv4 fragmentation flags

```

Cisco Performance Monitor in Cisco IOS Release 15.1(3)T and 12.2(58)SE

The following example configures the IPv4 fragmentation flags as a nonkey field:

```

Router(config)# flow record type performance-monitor RECORD-1
Router(config-flow-record)# collect ipv4 fragmentation flags

```

Related Commands

Command	Description
flow record	Creates a flow record, and enters Flexible NetFlow flow record configuration mode.
flow record type performance-monitor	Creates a flow record, and enters Performance Monitor flow record configuration mode.

collect ipv4 section

To configure a section of an IPv4 packet as a nonkey field for a flow record, use the **collect ipv4 section** command in flow record configuration mode. To disable the use of a section of an IPv4 packet as a nonkey field for a flow record, use the **no** form of this command.

collect ipv4 section {**header size** *header-size* | **payload size** *payload-size*}

no collect ipv4 section {**header size** *header-size* | **payload size** *payload-size*}

Syntax Description

header size <i>header-size</i>	Configures the number of bytes of raw data starting at the IPv4 header to use as a nonkey field, and enables collecting the value in the raw data from the flows. Range: 1 to 1200.
payload size <i>payload-size</i>	Configures the number of bytes of raw data starting at the IPv4 payload to use as a nonkey field, and enables collecting the value in the raw data from the flows. Range: 1 to 1200.

Command Default

A section of an IPv4 packet is not configured as a nonkey field.

Command Modes

Flow record configuration (config-flow-record)

Command History

Release	Modification
12.4(9)T	This command was introduced.
12.2(31)SB2	This command was integrated into Cisco IOS Release 12.2(31)SB2.
12.0(33)S	This command was implemented on the Cisco 12000 series routers.
12.2(33)SRC	Support for this command was added for Cisco 7200 series routers in Cisco IOS Release 12.2(33)SRC.
12.2(33)SRE	This command was integrated into Cisco IOS Release 12.2(33)SRE for the Cisco 7300 Network Processing Engine (NPE) series routers.

Usage Guidelines

The Flexible NetFlow collect commands are used to configure nonkey fields for the flow monitor record and to enable capturing the values in the fields for the flow created with the record. The values in nonkey fields are added to flows to provide additional information about the traffic in the flows. A change in the value of a nonkey field does not create a new flow. In most cases the values for nonkey fields are taken from only the first packet in the flow.

It is recommended that you configure both **header size** and **payload size** so that you know how much data is going to be captured.

collect ipv4 section header

This command causes the first IPv4 header to be copied into the flow record for this flow. Only the configured size in bytes will be copied and part of the payload will also be captured if the configured size is larger than the size of the header.



Note This command can result in large records which use a lot of router memory and export bandwidth.

collect ipv4 section payload

This command results in a copy of the first IPv4 payload being put into the flow record for this flow. Only the configured size in bytes will be copied and may end in a series of 0's if the configured size is greater than the size of the payload.



Note This command can result in large records which use a lot of router memory and export bandwidth.

Examples

The following example configures the first eight bytes from the IP header of the packets in the flows as a non-key field:

```
Router(config)# flow record FLOW-RECORD-1
Router(config-flow-record)# collect ipv4 section header size 8
```

The following example configures the first 16 bytes from the payload of the packets in the flows as a non-key field:

```
Router(config)# flow record FLOW-RECORD-1
Router(config-flow-record)# collect ipv4 section payload size 16
```

Cisco Performance Monitor in Cisco IOS Release 15.2(2)T and XE 3.5S

The following example configures the first 16 bytes from the payload of the packets in the flows as a nonkey field:

```
Router(config)# flow record type performance-monitor RECORD-1
Router(config-flow-record)# collect ipv4 section payload size 16
```

Related Commands

Command	Description
flow record	Creates a flow record, and enters Flexible NetFlow flow record configuration mode.
flow record type performance-monitor	Creates a flow record, and enters Performance Monitor flow record configuration mode.

collect ipv4 source

To configure the IPv4 source address as a nonkey field for a flow record, use the **collectipv4source** command in flow record configuration mode. To disable the use of the IPv4 source address field as a nonkey field for a flow record, use the **no** form of this command.

```
collect ipv4 source {address | {mask | prefix} [minimum-mask mask]}
no collect ipv4 source {address | {mask | prefix} [minimum-mask mask]}
```

Cisco Performance Monitor in Cisco IOS Release 15.1(3)T and 12.2(58)SE

```
collect ipv4 source mask [{minimum-mask mask}]
no collect ipv4 source mask [{minimum-mask mask}]
```

Cisco Catalyst 6500 Switches in Cisco IOS Release 12.2(50)SY

```
collect ipv4 source {mask | prefix}
no collect ipv4 source {mask | prefix}
```

Syntax Description

address	Configures the IPv4 source address as a nonkey field and enables collecting the value of the IPv4 source address from the flows.
mask	Configures the IPv4 source address mask as a nonkey field and enables collecting the value of the IPv4 source address mask from the flows.
prefix	Configures the prefix for the IPv4 source address as a nonkey field and enables collecting the value of the IPv4 source address prefix from the flows.
minimum-mask mask	(Optional) Specifies the size, in bits, of the minimum mask. Range: 1 to 32.

Command Default

The IPv4 source address is not configured as a nonkey field.

Command Modes

flow record configuration (config-flow-record)

Command History

Release	Modification
12.4(9)T	This command was introduced.
12.2(31)SB2	This command was integrated into Cisco IOS Release 12.2(31)SB2.
12.0(33)S	This command was implemented on the Cisco 12000 series routers.
12.2(33)SRC	This command was integrated into Cisco IOS Release 12.2(33)SRC and implemented on the Cisco 7200 series routers.
12.2(33)SRE	This command was integrated into Cisco IOS Release 12.2(33)SRE for the Cisco 7300 Network Processing Engine (NPE) series routers.
15.1(3)T	This command was integrated into Cisco IOS Release 15.1(3)T for Cisco Performance Monitor with only the mask and minimum-mask keywords.

Release	Modification
12.2(58)SE	This command was integrated into Cisco IOS Release 12.2(58)SE for Cisco Performance Monitor with only the maskandminimum-mask keywords.
12.2(50)SY	This command was modified. The addressand and minimum-mask keywords were not supported in Cisco IOS Release 12.2(50)SY.

Usage Guidelines

This command can be used with both Flexible NetFlow and Performance Monitor. These products use different commands to enter the configuration mode in which you issue this command, however the mode prompt is the same for both products. For Flexible NetFlow, the mode is also known as Flexible NetFlow flow record configuration mode. For Performance Monitor, the mode is also known as Performance Monitor flow record configuration mode. Here we refer to them both as flow record configuration mode.

The Flexible NetFlow and Performance Monitor **collect** commands are used to configure nonkey fields for the flow monitor record and to enable capturing the values in the fields for the flow created with the record. The values in nonkey fields are added to flows to provide additional information about the traffic in the flows. A change in the value of a nonkey field does not create a new flow. In most cases the values for nonkey fields are taken from only the first packet in the flow.

Cisco Performance Monitor in Cisco IOS Release 15.1(3)T and 12.2(58)SE

Only the **maskandminimum-mask** keywords are available. You must first enter the **flowrecordtypeperformance-monitor** command.

collect ipv4 source prefix minimum-mask

The source address prefix is the network part of an IPv4 source address. The optional minimum mask allows more information to be gathered about large networks.

collect ipv4 source mask minimum-mask

The source address mask is the number of bits that make up the network part of the source address. The optional minimum mask allows a minimum value to be configured. This command is useful when there is a minimum mask configured for the source prefix field and the mask is to be used with the prefix. In this case, the values configured for the minimum mask should be the same for the prefix and mask fields.

Alternatively, if the collector is aware of the minimum mask configuration of the prefix field, the mask field can be configured without a minimum mask so that the true mask and prefix can be calculated.

Examples

The following example configures the IPv4 source address prefix from the flows that have a prefix of 16 bits as a nonkey field:

```
Router(config)# flow record FLOW-RECORD-1
Router(config-flow-record)# collect ipv4 source prefix minimum-mask 16
```

Cisco Performance Monitor in Cisco IOS Release 15.1(3)T and 12.2(58)SE

The following example configures the IPv4 source address prefix from the flows that have a prefix of 16 bits as a nonkey field:

```
Router(config)# flow record type performance-monitor RECORD-1
Router(config-flow-record)# collect ipv4 source prefix minimum-mask 16
```

Related Commands

Command	Description
flow record	Creates a flow record for Flexible NetFlow.
flow record type performance-monitor	Creates a flow record for Performance Monitor.

collect ipv4 total-length

To configure the IPv4 total-length field as a nonkey field for a flow record, use the **collect ipv4 total-length** command in flow record configuration mode. To disable the use of the IPv4 total-length field as a nonkey field for a flow record, use the **no** form of this command.

```
collect ipv4 total-length [{maximum | minimum}]
no collect ipv4 total-length [{maximum | minimum}]
```

Syntax Description

maximum	(Optional) Configures the maximum value of the total length field as a nonkey field and enables collecting the maximum value of the total length field from the flows.
minimum	(Optional) Configures the minimum value of the total length field as a nonkey field and enables collecting the minimum value of the total length field from the flows.

Command Default

The IPv4 total-length field is not configured as a nonkey field.

Command Modes

Flow record configuration (config-flow-record)

Command History

Release	Modification
12.4(9)T	This command was introduced.
12.2(31)SB2	This command was integrated into Cisco IOS Release 12.2(31)SB2.
12.0(33)S	This command was implemented on the Cisco 12000 series routers.
12.2(33)SRC	Support for this command was added for Cisco 7200 series routers in Cisco IOS Release 12.2(33)SRC.
12.2(33)SRE	This command was integrated into Cisco IOS Release 12.2(33)SRE for the Cisco 7300 Network Processing Engine (NPE) series routers.

Usage Guidelines

The Flexible NetFlow collect commands are used to configure nonkey fields for the flow monitor record and to enable capturing the values in the fields for the flow created with the record. The values in nonkey fields are added to flows to provide additional information about the traffic in the flows. A change in the value of a nonkey field does not create a new flow. In most cases the values for nonkey fields are taken from only the first packet in the flow.

collect ipv4 total-length [minimum | maximum]

This command is used to collect the lowest and highest IPv4 total length values seen in the lifetime of the flow. Configuring this command results in more processing than is needed to simply collect the first total length value seen using the **collect ipv4 total-length** command.

Examples

The following example configures total-length value as a nonkey field:

```
Router(config)# flow record FLOW-RECORD-1
Router(config-flow-record)# collect ipv4 total-length
```

The following example configures minimum total-length value seen in the flows as a nonkey field:

```
Router(config)# flow record FLOW-RECORD-1
Router(config-flow-record)# collect ipv4 total-length minimum
```

Cisco Performance Monitor in Cisco IOS Release 15.1(3)T and 12.2(58)SE

The following example configures the minimum total-length value seen in the flows as a nonkey field:

```
Router(config)# flow record type performance-monitor RECORD-1
Router(config-flow-record)# collect ipv4 total-length minimum
```

Related Commands

Command	Description
flow record	Creates a flow record, and enters Flexible NetFlow flow record configuration mode.
flow record type performance-monitor	Creates a flow record, and enters Performance Monitor flow record configuration mode.

collect ipv4 ttl

To configure the IPv4 time-to-live (TTL) field as a nonkey field for a flow record, use the **collectipv4ttl** command in flow record configuration mode. To disable the use of the IPv4 TTL field as a nonkey field for a flow record, use the **no** form of this command.

```
collect ipv4 ttl [{maximum | minimum}]
no collect ipv4 ttl [{maximum | minimum}]
```

Syntax Description	
maximum	(Optional) Configures the maximum value of the TTL field as a nonkey field and enables collecting the maximum value of the TTL field from the flows.
minimum	(Optional) Configures the minimum value of the TTL field as a nonkey field and enables collecting the minimum value of the TTL field from the flows.

Command Default The IPv4 time-to-live (TTL) field is not configured as a nonkey field.

Command Modes flow record configuration (config-flow-record)

Command History	Release	Modification
	12.4(9)T	This command was introduced.
	12.2(31)SB2	This command was integrated into Cisco IOS Release 12.2(31)SB2.
	12.0(33)S	This command was implemented on the Cisco 12000 series routers.
	12.2(33)SRC	This command was integrated into Cisco IOS Release 12.2(33)SRC and implemented on the Cisco 7200 series routers.
	12.2(33)SRE	This command was integrated into Cisco IOS Release 12.2(33)SRE for the Cisco 7300 Network Processing Engine (NPE) series routers.
	15.1(3)T	This command was integrated into Cisco IOS Release 15.1(3)T for Cisco Performance Monitor.
	12.2(58)SE	This command was integrated into Cisco IOS Release 12.2(58)SE for Cisco Performance Monitor.

Usage Guidelines This command can be used with both Flexible NetFlow and Performance Monitor. These products use different commands to enter the configuration mode in which you issue this command, however the mode prompt is the same for both products. For Flexible NetFlow, the mode is also known as Flexible NetFlow flow record configuration mode. For Performance Monitor, the mode is also known as Performance Monitor flow record configuration mode. Here we refer to them both as flow record configuration mode.

The Flexible NetFlow and Performance Monitor **collect** commands are used to configure nonkey fields for the flow monitor record and to enable capturing the values in the fields for the flow created with the record. The values in nonkey fields are added to flows to provide additional information about the traffic in the flows. A change in the value of a nonkey field does not create a new flow. In most cases the values for nonkey fields are taken from only the first packet in the flow.

Cisco Performance Monitor in Cisco IOS Release 15.1(3)T and 12.2(58)SE

You must first enter the `flowrecordtypeperformance-monitor` command.

`collect ipv4 ttl [minimum | maximum]`

This command is used to collect the lowest and highest IPv4 TTL values seen in the lifetime of the flow. Configuring this command results in more processing than is needed to simply collect the first TTL value seen using the `collectipv4ttl` command.

Examples

The following example configures the largest value for IPv4 TTL seen in the flows as a nonkey field:

```
Router(config)# flow record FLOW-RECORD-1
Router(config-flow-record)# collect ipv4 ttl maximum
```

The following example configures the smallest value for IPv4 TTL seen in the flows as a nonkey field

```
Router(config)# flow record FLOW-RECORD-1
Router(config-flow-record)# collect ipv4 ttl minimum
```

Cisco Performance Monitor in Cisco IOS Release 15.1(3)T and 12.2(58)SE

The following example configures the smallest value for IPv4 TTL seen in the flows as a nonkey field

```
Router(config)# flow record type performance-monitor RECORD-1
Router(config-flow-record)# collect ipv4 ttl minimum
```

Related Commands

Command	Description
<code>flow record</code>	Creates a flow record for Flexible NetFlow.
<code>flow record type performance-monitor</code>	Creates a flow record for Performance Monitor.

collect ipv6

To configure one or more of the IPv6 fields as a nonkey field for a flow record, use the **collect ipv6** command in flow record configuration mode. To disable the use of one or more of the IPv6 fields as a nonkey field for a flow record, use the **no** form of this command.

```
collect ipv6 {dscp | flow-label | next-header | payload-length | precedence | protocol | traffic-class | version}
```

```
no collect ipv6 {dscp | flow-label | next-header | payload-length | precedence | protocol | traffic-class | version}
```

Syntax Description

dscp	Configures the differentiated services code point (DSCP) field as a nonkey field and enables collecting the value in the IPv6 DSCP type of service (ToS) fields from the flows.
flow-label	Configures the IPv6 flow label as a nonkey field and enables collecting the value in the IPv6 flow label from the flows.
next-header	Configures the next-header field as a nonkey field and enables collecting the value of the next-header field in the IPv6 header from the flows.
payload-length	Configures the length of the IPv6 payload as a nonkey field and enables collecting the number of bytes used for the payload in the flows.
precedence	Configures the IPv6 precedence flag as a nonkey field and enables collecting the value in the IPv6 precedence (part of ToS) field from the flows.
protocol	Configures the IPv6 payload protocol field as a nonkey field and enables collecting the IPv6 value of the payload protocol field for the payload in the flows.
traffic-class	Configures the IPv6 traffic-class field as a nonkey field and enables collecting the value in the IPv6 protocol field from the flows.
version	Configures the IPv6 version field as a nonkey field and enables collecting the value in the IPv6 version field from the flows.

Command Default

The IPv6 fields are not configured as a nonkey field.

Command Modes

Flow record configuration (config-flow-record)

Command History

Release	Modification
12.4(20)T	This command was introduced.
12.2(33)SRE	This command was integrated into Cisco IOS Release 12.2(33)SRE for the Cisco 7200 and Cisco 7300 Network Processing Engine (NPE) series routers.
15.2(2)T	This command was integrated into Cisco IOS Release 15.2(2)T for Cisco Performance Monitor.

Release	Modification
Cisco IOS XE Release 3.5S	This command was integrated into Cisco IOS XE Release 3.5S for Cisco Performance Monitor.

Usage Guidelines

This command can be used with both Flexible NetFlow and Performance Monitor. These products use different commands to enter the configuration mode in which you issue this command, however the mode prompt is the same for both products. For Performance Monitor, you must first enter the **flow record type performance-monitor** command before you can use this command.

Because the mode prompt is the same for both products, here we refer to the command mode for both products as flow record configuration mode. However, for Flexible NetFlow, the mode is also known as Flexible NetFlow flow record configuration mode; and for Performance Monitor, the mode is also known as Performance Monitor flow record configuration mode.

The Flexible NetFlow collect commands are used to configure nonkey fields for the flow monitor record and to enable capturing the values in the fields for the flow created with the record. The values in nonkey fields are added to flows to provide additional information about the traffic in the flows. A change in the value of a nonkey field does not create a new flow. In most cases the values for nonkey fields are taken from only the first packet in the flow.



Note

Some of the keywords for the **collect ipv6** command are documented as separate commands. All of the keywords for the **collect ipv6** command that are documented separately start with **collect ipv6**. For example, for information about configuring the IPv6 hop limit field as a nonkey field and collecting its value for a flow record, refer to the **collect ipv6 hop-limit** command.

Examples

The following example configures the IPv6 DSCP field as a nonkey field:

```
Router(config)# flow record FLOW-RECORD-1
Router(config-flow-record)# collect ipv6 dscp
```

Cisco Performance Monitor in Cisco IOS Release 15.2(2)T and XE 3.5S

The following example configures the IPv6 DSCP field as a nonkey field:

```
Router(config)# flow record type performance-monitor RECORD-1
Router(config-flow-record)# collect ipv6 dscp
```

Related Commands

Command	Description
flow record	Creates a flow record, and enters Flexible NetFlow flow record configuration mode.
flow record type performance-monitor	Creates a flow record, and enters Performance Monitor flow record configuration mode.

collect ipv6 destination

To configure the IPv6 destination address as a nonkey field for a flow record, use the **collect ipv6 destination** command in flow record configuration mode. To disable the use of an IPv6 destination address field as a nonkey field for a flow record, use the **no** form of this command.

```
collect ipv6 destination {address | {mask | prefix} [minimum-mask mask]}
no collect ipv6 destination {address | {mask | prefix} [minimum-mask mask]}
```

Command Syntax on Cisco Catalyst 6500 Switches running Cisco IOS Release 12.2(50)SY

```
collect ipv6 destination {mask | prefix}
no collect ipv6 destination {mask | prefix}
```

Syntax Description	Parameter	Description
	address	Configures the IPv6 destination address as a nonkey field and enables collecting the value of the IPv6 destination address from the flows.
	mask	Configures the IPv6 destination address mask as a nonkey field and enables collecting the value of the IPv6 destination address mask from the flows.
	prefix	Configures the prefix for the IPv6 destination address as a nonkey field and enables collecting the value of the IPv6 destination address prefix from the flows.
	minimum-mask <i>mask</i>	(Optional) Specifies the size, in bits, of the minimum mask. Range: 1 to 128.

Command Default

The IPv6 destination address is not configured as a nonkey field.

Command Modes

Flow record configuration (config-flow-record)

Command History

Release	Modification
12.4(20)T	This command was introduced.
12.2(33)SRE	This command was integrated into Cisco IOS Release 12.2(33)SRE for the Cisco 7200 and Cisco 7300 Network Processing Engine (NPE) series routers.
12.2(50)SY	This command was modified. The address and minimum-mask keywords were not supported in Cisco IOS Release 12.2(50)SY.
15.2(2)T	This command was integrated into Cisco IOS Release 15.2(2)T for Cisco Performance Monitor.
Cisco IOS XE Release 3.5S	This command was integrated into Cisco IOS XE Release 3.5S for Cisco Performance Monitor.

Usage Guidelines

This command can be used with both Flexible NetFlow and Performance Monitor. These products use different commands to enter the configuration mode in which you issue this command, however the mode prompt is the same for both products. For Performance Monitor, you must first enter the **flow record type performance-monitor** command before you can use this command.

Because the mode prompt is the same for both products, here we refer to the command mode for both products as flow record configuration mode. However, for Flexible NetFlow, the mode is also known as Flexible NetFlow flow record configuration mode; and for Performance Monitor, the mode is also known as Performance Monitor flow record configuration mode.

The Flexible NetFlow collect commands are used to configure nonkey fields for the flow monitor record and to enable capturing the values in the fields for the flow created with the record. The values in nonkey fields are added to flows to provide additional information about the traffic in the flows. A change in the value of a nonkey field does not create a new flow. In most cases the values for nonkey fields are taken from only the first packet in the flow.

Examples

The following example configures the IPv6 destination address prefix from the flows that have a prefix of 16 bits as a nonkey field:

```
Router(config)# flow record FLOW-RECORD-1
Router(config-flow-record)# collect ipv6 destination prefix minimum-mask 16
```

Cisco Performance Monitor in Cisco IOS Release 15.2(2)T and XE 3.5S

The following example configures the IPv6 destination address prefix from the flows that have a prefix of 16 bits as a nonkey field:

```
Router(config)# flow record type performance-monitor RECORD-1
Router(config-flow-record)# collect ipv6 destination prefix minimum-mask 16
```

Related Commands

Command	Description
flow record	Creates a flow record, and enters Flexible NetFlow flow record configuration mode.
flow record type performance-monitor	Creates a flow record, and enters Performance Monitor flow record configuration mode.

collect ipv6 extension map

To configure the bitmap of the IPv6 extension header map as a nonkey field for a flow record, use the **collect ipv6 extension map** command in flow record configuration mode. To disable the use of the IPv6 bitmap of IPv6 extension header map as a nonkey field for a flow record, use the **no** form of this command.

collect ipv6 extension map
no collect ipv6 extension map

Syntax Description

This command has no arguments or keywords.

Command Default

The use of the bitmap of the IPv6 extension header map is not configured as a nonkey field.

Command Modes

Flow record configuration (config-flow-record)

Command History

Release	Modification
12.4(20)T	This command was introduced.
12.2(33)SRE	This command was integrated into Cisco IOS Release 12.2(33)SRE for the Cisco 7200 and Cisco 7300 Network Processing Engine (NPE) series routers.
15.2(2)T	This command was integrated into Cisco IOS Release 15.2(2)T for Cisco Performance Monitor.
Cisco IOS XE Release 3.5S	This command was integrated into Cisco IOS XE Release 3.5S for Cisco Performance Monitor.

Usage Guidelines

This command can be used with both Flexible NetFlow and Performance Monitor. These products use different commands to enter the configuration mode in which you issue this command, however the mode prompt is the same for both products. For Performance Monitor, you must first enter the **flow record type performance-monitor** command before you can use this command.

Because the mode prompt is the same for both products, here we refer to the command mode for both products as flow record configuration mode. However, for Flexible NetFlow, the mode is also known as Flexible NetFlow flow record configuration mode; and for Performance Monitor, the mode is also known as Performance Monitor flow record configuration mode.

The Flexible NetFlow collect commands are used to configure nonkey fields for the flow monitor record and to enable capturing the values in the fields for the flow created with the record. The values in nonkey fields are added to flows to provide additional information about the traffic in the flows. A change in the value of a nonkey field does not create a new flow. In most cases the values for nonkey fields are taken from only the first packet in the flow.

Bitmap of the IPv6 Extension Header Map

The bitmap of IPv6 extension header map is made up of 32 bits.

```

      0   1   2   3   4   5   6   7
+-----+-----+-----+-----+-----+-----+-----+-----+
| Res | FRA1| RH  | FRA0| UNK | Res | HOP | DST |

```

```

+-----+-----+-----+-----+-----+-----+-----+
| 8     | 9     | 10    | 11    | 12    | 13    | 14    | 15    |
+-----+-----+-----+-----+-----+-----+
| PAY  | AH   | ESP  |       | Reserved |       |       |       |
+-----+-----+-----+-----+-----+-----+
| 16    | 17    | 18    | 19    | 20    | 21    | 22    | 23    |
+-----+-----+-----+-----+-----+-----+
|       |       |       |       | Reserved |       |       |       |
+-----+-----+-----+-----+-----+-----+
| 24    | 25    | 26    | 27    | 28    | 29    | 30    | 31    |
+-----+-----+-----+-----+-----+-----+
|       |       |       |       | Reserved |       |       |       |
+-----+-----+-----+-----+-----+-----+
0 Res  Reserved
1 FRA1 Fragmentation header - not first fragment
2 RH   Routing header
3 FRA0 Fragment header - first fragment
4 UNK  Unknown Layer 4 header
      (compressed, encrypted, not supported)
5 Res  Reserved
6 HOP  Hop-by-hop option header
7 DST  Destination option header
8 PAY  Payload compression header
9 AH   Authentication Header
10 ESP Encrypted security payload
11 to 31 Reserved

```

For more information on IPv6 headers, refer to RFC 2460 *Internet Protocol, Version 6 (IPv6)* at the following URL: <http://www.ietf.org/rfc/rfc2460.txt>.

Examples

The following example configures the bitmap of IPv6 extension header map as a monkey field:

```

Router(config)# flow record FLOW-RECORD-1
Router(config-flow-record)# collect ipv6 extension map

```

Cisco Performance Monitor in Cisco IOS Release 15.2(2)T and XE 3.5S

The following example configures the bitmap of IPv6 extension header map as a monkey field:

```

Router(config)# flow record type performance-monitor RECORD-1
Router(config-flow-record)# collect ipv6 extension map

```

Related Commands

Command	Description
flow record	Creates a flow record, and enters Flexible NetFlow flow record configuration mode.
flow record type performance-monitor	Creates a flow record, and enters Performance Monitor flow record configuration mode.

collect ipv6 fragmentation

To configure one or more of the IPv6 fragmentation fields as a nonkey field for a flow record, use the **collect ipv6 fragmentation** command in flow record configuration mode. To disable the use one or more of the IPv6 fragmentation fields as a nonkey field for a flow record, use the **no** form of this command.

```
collect ipv6 fragmentation {flags | id | offset}
no collect ipv6 fragmentation {flags | id | offset}
```

Syntax Description	Parameter	Description
	flags	Configures the IPv6 fragmentation flags as a non-key field and enables collecting the value in the IPv6 fragmentation flag fields from the flows.
	id	Configures the IPv6 fragmentation ID as a non-key field and enables collecting the value in the IPv6 fragmentation id fields from the flows
	offset	Configures the IPv6 fragmentation offset as a non-key field and enables collecting the value in the IPv6 fragmentation offset field from the flows.

Command Default The use of one or more of the IPv6 fragmentation fields is not configured as a nonkey field.

Command Modes Flow record configuration (config-flow-record)

Command History	Release	Modification
	12.4(20)T	This command was introduced.
	12.2(33)SRE	This command was integrated into Cisco IOS Release 12.2(33)SRE for the Cisco 7200 and Cisco 7300 Network Processing Engine (NPE) series routers.
	15.2(2)T	This command was integrated into Cisco IOS Release 15.2(2)T for Cisco Performance Monitor.
	Cisco IOS XE Release 3.5S	This command was integrated into Cisco IOS XE Release 3.5S for Cisco Performance Monitor.

Usage Guidelines This command can be used with both Flexible NetFlow and Performance Monitor. These products use different commands to enter the configuration mode in which you issue this command, however the mode prompt is the same for both products. For Performance Monitor, you must first enter the **flow record type performance-monitor** command before you can use this command.

Because the mode prompt is the same for both products, here we refer to the command mode for both products as flow record configuration mode. However, for Flexible NetFlow, the mode is also known as Flexible NetFlow flow record configuration mode; and for Performance Monitor, the mode is also known as Performance Monitor flow record configuration mode.

The Flexible NetFlow collect commands are used to configure nonkey fields for the flow monitor record and to enable capturing the values in the fields for the flow created with the record. The values in nonkey fields are added to flows to provide additional information about the traffic in the flows. A change in the value of

a nonkey field does not create a new flow. In most cases the values for nonkey fields are taken from only the first packet in the flow.

Examples

The following example configures the IPv6 fragmentation flags field as a nonkey field:

```
Router(config)# flow record FLOW-RECORD-1
Router(config-flow-record)# collect ipv6 fragmentation flags
```

Cisco Performance Monitor in Cisco IOS Release 15.2(2)T and XE 3.5S

The following example configures the IPv6 fragmentation flags field as a nonkey field:

```
Router(config)# flow record type performance-monitor RECORD-1
Router(config-flow-record)# collect ipv6 fragmentation flags
```

Related Commands

Command	Description
flow record	Creates a flow record, and enters Flexible NetFlow flow record configuration mode.
flow record type performance-monitor	Creates a flow record, and enters Performance Monitor flow record configuration mode.

collect ipv6 hop-limit

To configure the IPv6 hop limit as a nonkey field for a flow record, use the **collect ipv6 hop-limit** command in flow record configuration mode. To disable the use of the IPv6 hop limit field as a nonkey field for a flow record, use the **no** form of this command.

```
collect ipv6 hop-limit [maximum] [minimum]
no collect ipv6 hop-limit [maximum] [minimum]
```

Syntax Description	
maximum	(Optional) Configures the IPv6 maximum hop limit as a nonkey field and enables collecting the value of the IPv6 maximum hop limit from the flows.
minimum	(Optional) Configures the IPv6 minimum hop limit as a nonkey field and enables collecting the value of the IPv6 minimum hop limit from the flows.

Command Default The IPv6 hop limit is not configured as a nonkey field.

Command Modes Flow record configuration (config-flow-record)

Command History	Release	Modification
	12.4(20)T	This command was introduced.
	12.2(33)SRE	This command was integrated into Cisco IOS Release 12.2(33)SRE for the Cisco 7200 and Cisco 7300 Network Processing Engine (NPE) series routers.
	15.2(2)T	This command was integrated into Cisco IOS Release 15.2(2)T for Cisco Performance Monitor.
	Cisco IOS XE Release 3.5S	This command was integrated into Cisco IOS XE Release 3.5S for Cisco Performance Monitor.

Usage Guidelines **collect ipv6 hop-limit [minimum | maximum]**

This command can be used with both Flexible NetFlow and Performance Monitor. These products use different commands to enter the configuration mode in which you issue this command, however the mode prompt is the same for both products. For Performance Monitor, you must first enter the **flow record type performance-monitor** command before you can use this command.

Because the mode prompt is the same for both products, here we refer to the command mode for both products as flow record configuration mode. However, for Flexible NetFlow, the mode is also known as Flexible NetFlow flow record configuration mode; and for Performance Monitor, the mode is also known as Performance Monitor flow record configuration mode.

This command is used to collect the lowest and highest IPv6 hop limit values seen in the lifetime of the flow. Configuring this command results in more processing than is needed to simply collect the first hop limit value seen using the **collect ipv6 hop-limit** command.

Examples

The following example configures the IPv6 maximum hop limit from the flows as a nonkey field:

```
Router(config)# flow record FLOW-RECORD-1
Router(config-flow-record)# collect ipv6 hop-limit maximum
```

Cisco Performance Monitor in Cisco IOS Release 15.2(2)T and XE 3.5S

The following example configures the IPv6 maximum hop limit from the flows as a nonkey field:

```
Router(config)# flow record type performance-monitor RECORD-1
Router(config-flow-record)# collect ipv6 hop-limit maximum
```

Related Commands

Command	Description
flow record	Creates a flow record, and enters Flexible NetFlow flow record configuration mode.
flow record type performance-monitor	Creates a flow record, and enters Performance Monitor flow record configuration mode.

collect ipv6 length

To configure one or more of the IPv6 length fields as a nonkey field for a flow record, use the **collect ipv6 length** command in flow record configuration mode. To disable the use of one or more of the IPv6 length fields as a nonkey field for a flow record, use the **no** form of this command.

```
collect ipv6 length {header | payload | total [maximum] [minimum]}
no collect ipv6 length {header | payload | total [maximum] [minimum]}
```

Syntax Description		
	header	Configures the length in bytes of the IPv6 header, not including any extension headers, as a nonkey field and collects the value of it for a flow record.
	payload	Configures the length in bytes of the IPv6 payload, including any extension headers, as a nonkey field and collects the value of it for a flow record.
	total	Configures the total length in bytes of the IPv6 header and payload as a nonkey field and collects the value of it for a flow record.
	maximum	(Optional) Configures the maximum total length in bytes of the IPv6 header and payload as a nonkey field and collects the value of it for a flow record.
	minimum	(Optional) Configures the minimum total length in bytes of the IPv6 header and payload as a nonkey field and collects the value of it for a flow record.

Command Default The IPv6 length fields are not configured as a nonkey field.

Command Modes Flow record configuration (config-flow-record)

Command History	Release	Modification
	12.4(20)T	This command was introduced.
	12.2(33)SRE	This command was integrated into Cisco IOS Release 12.2(33)SRE for the Cisco 7200 and Cisco 7300 Network Processing Engine (NPE) series routers.
	15.2(2)T	This command was integrated into Cisco IOS Release 15.2(2)T for Cisco Performance Monitor.
	Cisco IOS XE Release 3.5S	This command was integrated into Cisco IOS XE Release 3.5S for Cisco Performance Monitor.

Usage Guidelines **collect ipv6 length [minimum | maximum]**

This command can be used with both Flexible NetFlow and Performance Monitor. These products use different commands to enter the configuration mode in which you issue this command, however the mode prompt is the same for both products. For Performance Monitor, you must first enter the **flow record type performance-monitor** command before you can use this command.

Because the mode prompt is the same for both products, here we refer to the command mode for both products as flow record configuration mode. However, for Flexible NetFlow, the mode is also known as Flexible

NetFlow flow record configuration mode; and for Performance Monitor, the mode is also known as Performance Monitor flow record configuration mode.

This command is used to collect the lowest and highest IPv6 length values seen in the lifetime of the flow. Configuring this command results in more processing than is needed to simply collect the length value seen using the **collect ipv6 length** command.

Examples

The following example configures the length of the IPv6 header, not including any extension headers, in bytes as a nonkey field:

```
Router(config)# flow record FLOW-RECORD-1
Router(config-flow-record)# collect ipv6 length header
```

Cisco Performance Monitor in Cisco IOS Release 15.2(2)T and XE 3.5S

The following example configures the length of the IPv6 header, not including any extension headers, in bytes as a nonkey field:

```
Router(config)# flow record type performance-monitor RECORD-1
Router(config-flow-record)# collect ipv6 length header
```

Related Commands

Command	Description
flow record	Creates a flow record, and enters Flexible NetFlow flow record configuration mode.
flow record type performance-monitor	Creates a flow record, and enters Performance Monitor flow record configuration mode.

collect ipv6 section

To configure a section of an IPv6 packet as a nonkey field for a flow record, use the **collect ipv6 section** command in flow record configuration mode. To disable the use of a section of an IPv6 packet as a nonkey field for a flow record, use the **no** form of this command.

```
collect ipv6 section {header size header-size | payload size payload-size}
no collect ipv6 section {header size header-size | payload size payload-size}
```

Syntax Description	header size <i>header-size</i>	payload size <i>payload-size</i>
	Configures the number of bytes of raw data, starting at the IPv6 header, to use as a nonkey field, and enables collecting the value in the raw data from the flows. Range: 1 to 1200.	Configures the number of bytes of raw data, starting at the IPv6 payload, to use as a nonkey field, and enables collecting the value in the raw data from the flows. Range: 1 to 1200.

Command Default A section of an IPv6 packet is not configured as a non-key field.

Command Modes Flow record configuration (config-flow-record)

Command History	Release	Modification
	12.4(20)T	This command was introduced.
	12.2(33)SRE	This command was integrated into Cisco IOS Release 12.2(33)SRE for the Cisco 7200 and Cisco 7300 Network Processing Engine (NPE) series routers.
	15.2(2)T	This command was integrated into Cisco IOS Release 15.2(2)T for Cisco Performance Monitor.
	Cisco IOS XE Release 3.5S	This command was integrated into Cisco IOS XE Release 3.5S for Cisco Performance Monitor.

Usage Guidelines This command can be used with both Flexible NetFlow and Performance Monitor. These products use different commands to enter the configuration mode in which you issue this command, however the mode prompt is the same for both products. For Performance Monitor, you must first enter the **flow record type performance-monitor** command before you can use this command.

Because the mode prompt is the same for both products, here we refer to the command mode for both products as flow record configuration mode. However, for Flexible NetFlow, the mode is also known as Flexible NetFlow flow record configuration mode; and for Performance Monitor, the mode is also known as Performance Monitor flow record configuration mode.

The Flexible NetFlow collect commands are used to configure nonkey fields for the flow monitor record and to enable capturing the values in the fields for the flow created with the record. The values in nonkey fields are added to flows to provide additional information about the traffic in the flows. A change in the value of a nonkey field does not create a new flow. In most cases the values for nonkey fields are taken from only the first packet in the flow.

It is recommended that you configure both **header size** and **payload size** so that you know how much data is going to be captured.



Note The IPv6 payload data is captured only if the first packet in the flow is an IPv6 packet. If the first packet in the flow is not an IPv6 packet, information from other packets in the flow such as packet and byte counters, is still captured.

collect ipv6 section header

This command causes a copy of the first IPv6 header to be put into the flow record for this flow. Only the configured size in bytes will be copied, and part of the payload will also be captured if the configured size is larger than the size of the header.



Note Configuring this command can result in large records that use a lot of router memory and export bandwidth.

collect ipv6 section payload

This command causes a copy of the first IPv6 payload to be put into the flow record for this flow. Only the configured size in bytes will be copied, and it may end in a series of zeros if the configured size is smaller than the size of the payload.



Note Configuring this command can result in large records that use a lot of router memory and export bandwidth.

Examples

The following example configures the first eight bytes from the IPv6 header of the packets in the flows as a nonkey field:

```
Router(config)# flow record FLOW-RECORD-1
Router(config-flow-record)# collect ipv6 section header size 8
```

The following example configures the first 16 bytes from the payload of the IPv6 packets in the flows as a nonkey field:

```
Router(config)# flow record FLOW-RECORD-1
Router(config-flow-record)# collect ipv6 section payload size 16
```

Cisco Performance Monitor in Cisco IOS Release 15.2(2)T and XE 3.5S

The following example configures the first 16 bytes from the payload of the IPv6 packets in the flows as a nonkey field:

```
Router(config)# flow record type performance-monitor RECORD-1
Router(config-flow-record)# collect ipv6 section payload size 16
```

Related Commands

Command	Description
flow record	Creates a flow record, and enters Flexible NetFlow flow record configuration mode.
flow record type performance-monitor	Creates a flow record, and enters Performance Monitor flow record configuration mode.

collect ipv6 source

To configure the IPv6 source address as a nonkey field for a flow record, use the **collect ipv6 source** command in flow record configuration mode. To disable the use of the IPv6 source address field as a nonkey field for a flow record, use the **no** form of this command.

```
collect ipv6 source {address | {mask | prefix} [minimum-mask mask]}
no collect ipv6 source {address | {mask | prefix} [minimum-mask mask]}
```

Cisco Catalyst 6500 Switches in Cisco IOS Release 12.2(50)SY

```
collect ipv6 source {mask | prefix}
no collect ipv6 source {mask | prefix}
```

Syntax Description

address	Configures the IPv6 source address as a nonkey field and enables collecting the value of the IPv6 source address from the flows.
mask	Configures the IPv6 source address mask as a nonkey field and enables collecting the value of the IPv6 source address mask from the flows.
prefix	Configures the prefix for the IPv6 source address as a nonkey field and enables collecting the value of the IPv6 source address prefix from the flows.
minimum-mask <i>mask</i>	(Optional) Specifies the size, in bits, of the minimum mask. Range: 1 to 128.

Command Default

The IPv6 source address is not configured as a nonkey field.

Command Modes

Flow record configuration (config-flow-record)

Command History

Release	Modification
12.4(20)T	This command was introduced.
12.2(33)SRE	This command was integrated into Cisco IOS Release 12.2(33)SRE for the Cisco 7200 and Cisco 7300 Network Processing Engine (NPE) series routers.
12.2(50)SY	This command was modified. The address and minimum-mask keywords were not supported in Cisco IOS Release 12.2(50)SY.
15.2(2)T	This command was integrated into Cisco IOS Release 15.2(2)T for Cisco Performance Monitor.
Cisco IOS XE Release 3.5S	This command was integrated into Cisco IOS XE Release 3.5S for Cisco Performance Monitor.

Usage Guidelines

This command can be used with both Flexible NetFlow and Performance Monitor. These products use different commands to enter the configuration mode in which you issue this command, however the mode prompt is the same for both products. For Performance Monitor, you must first enter the **flow record type performance-monitor** command before you can use this command.

Because the mode prompt is the same for both products, here we refer to the command mode for both products as flow record configuration mode. However, for Flexible NetFlow, the mode is also known as Flexible NetFlow flow record configuration mode; and for Performance Monitor, the mode is also known as Performance Monitor flow record configuration mode.

The Flexible NetFlow collect commands are used to configure nonkey fields for the flow monitor record and to enable capturing the values in the fields for the flow created with the record. The values in nonkey fields are added to flows to provide additional information about the traffic in the flows. A change in the value of a nonkey field does not create a new flow. In most cases the values for nonkey fields are taken from only the first packet in the flow.

collect IPv6 source prefix minimum mask

The source address prefix field is the network part of the source address. The optional minimum mask allows more information to be gathered about large networks.

collect IPv6 source mask minimum mask

The source address mask is the number of bits that make up the network part of the source address. The optional minimum mask allows a minimum value to be configured. This command is useful when there is a minimum mask configured for the source prefix field and the mask is to be used with the prefix. In this case, the values configured for the minimum mask should be the same for the prefix and mask fields.

Alternatively, if the collector is aware of the minimum mask configuration of the prefix field, the mask field can be configured without a minimum mask so that the true mask and prefix can be calculated.

Examples

The following example configures the IPv6 source address prefix from the flows that have a prefix of 16 bits as a nonkey field:

```
Router(config)# flow record FLOW-RECORD-1
Router(config-flow-record)# collect ipv6 source prefix minimum-mask 16
```

Cisco Performance Monitor in Cisco IOS Release 15.2(2)T and XE 3.5S

The following example configures the IPv6 source address prefix from the flows that have a prefix of 16 bits as a nonkey field:

```
Router(config)# flow record type performance-monitor RECORD-1
Router(config-flow-record)# collect ipv6 source prefix minimum-mask 16
```

Related Commands

Command	Description
flow record	Creates a flow record, and enters Flexible NetFlow flow record configuration mode.
flow record type performance-monitor	Creates a flow record, and enters Performance Monitor flow record configuration mode.

collect mpls label

To configure MPLS label fields as a nonkey field for a flow record, use the **collect mpls label** command in flow record configuration mode. To disable the use of the MPLS label fields as a nonkey field for a flow record, use the **no** form of this command.

```
collect mpls {label 1 | {details | exp | ttl} | label 2 | {details} | label 3 | {details} | label 4 | {details} | label 5 | {details} | label 6 | {details}}
```

```
no collect mpls {label 1 | {details | exp | ttl} | label 2 | {details} | label 3 | {details} | label 4 | {details} | label 5 | {details} | label 6 | {details}}
```

Syntax Description

label 1	Configures the first MPLS label as a nonkey field.
details	Configures the details of the MPLS label as a nonkey field.
exp	Configures the MPLS experimental level field as a nonkey field.
ttl	Configures the time-to-life (TTL) for the MPLS label as a nonkey field.
label 2	Configures the second MPLS label as a nonkey field.
label 3	Configures the third MPLS label as a nonkey field.
label 4	Configures the fourth MPLS label as a nonkey field.
label 5	Configures the fifth MPLS label as a nonkey field.
label 6	Configures the sixth MPLS label as a nonkey field.

Command Default

MPLS label fields are not configured as a nonkey field.

Command Modes

Flow record configuration (config-flow-record)

Command History

Release	Modification
Cisco IOS XE Release 3.9S	This command was introduced.

Usage Guidelines

The Flexible NetFlow **collect** commands are used to configure nonkey fields for the flow monitor record and to enable capturing the values in the fields for the flow created with the record. The values in nonkey fields are added to flows to provide additional information about the traffic in the flows. A change in the value of a nonkey field does not create a new flow. In most cases the values for nonkey fields are taken from only the first packet in the flow.

Examples

The following example configures the details of the first MPLS label as a nonkey field:

```
Router(config)# flow record FLOW-RECORD-1
Router(config-flow-record)# collect mpls label 1 details
```

Related Commands

Command	Description
flow record	Creates a flow record, and enters Flexible NetFlow flow record configuration mode.

collect policy qos classification hierarchy

To configure QoS policy classification hierarchy field as a nonkey field for a flow record, use the **collect policy qos classification hierarchy** command in flow record configuration mode. To disable the use of the MPLS label fields as a nonkey field for a flow record, use the **no** form of this command.

collect policy qos classification hierarchy
no collect policy qos classification hierarchy

Syntax Description This command has no arguments or keywords.

Command Default QoS policy classification hierarchy field is not configured as a nonkey field.

Command Modes Flow record configuration (config-flow-record)

Release	Modification
Cisco IOS XE Release 3.9S	This command was introduced.

Usage Guidelines The Flexible NetFlow **collect** commands are used to configure nonkey fields for the flow monitor record and to enable capturing the values in the fields for the flow created with the record. The values in nonkey fields are added to flows to provide additional information about the traffic in the flows. A change in the value of a nonkey field does not create a new flow. In most cases the values for nonkey fields are taken from only the first packet in the flow.

Examples The following example configures the details of the QoS policy classification hierarchy field as a nonkey field:

```
Router(config)# flow record FLOW-RECORD-1
Router(config-flow-record)# collect policy qos classification hierarchy
```

Command	Description
flow record	Creates a flow record, and enters Flexible NetFlow flow record configuration mode.

collect policy qos queue index

To configure the QoS policy queue index as a nonkey field for a flow record, use the **collect policy qos queue index** command in flow record configuration mode. To disable the use of one or more of the routing attributes as a nonkey field for a flow record, use the **no** form of this command.

collect policy qos queue index
no collect policy qos queue index

Syntax Description This command has no arguments or keywords.

Command Default QoS policy queue index is not configured as a nonkey field.

Command Modes Flow record configuration (config-flow-record)

Release	Modification
Cisco IOS XE Release 3.9S	This command was introduced.

Usage Guidelines The Flexible NetFlow **collect** commands are used to configure nonkey fields for the flow monitor record and to enable capturing the values in the fields for the flow created with the record. The values in nonkey fields are added to flows to provide additional information about the traffic in the flows. A change in the value of a nonkey field does not create a new flow. In most cases the values for nonkey fields are taken from only the first packet in the flow.

Examples The following example configures the QoS policy queue index as a nonkey field:

```
Router(config)# flow record FLOW-RECORD-1
Router(config-flow-record)# collect policy qos queue index
```

Command	Description
flow record	Creates a flow record, and enters Flexible NetFlow flow record configuration mode.

collect routing

To configure one or more of the routing attributes as a nonkey field for a flow record, use the **collect routing** command in flow record configuration mode. To disable the use of one or more of the routing attributes as a nonkey field for a flow record, use the **no** form of this command.

```
collect routing {destination | source} [{as [{4-octet | peer [4-octet]}] | traffic-index | forwarding-status
| next-hop address {ipv4 | ipv6} [bgp] | vrf input | vrf output}]
no collect routing {destination | source} [{as [{4-octet | peer [4-octet]}] | traffic-index |
forwarding-status | next-hop address {ipv4 | ipv6} [bgp] | vrf input | vrf output}]
```

Cisco Performance Monitor in Cisco IOS Release 15.1(3)T and 12.2(58)SE

```
collect routing forwarding-status [reason]
no collect routing forwarding-status [reason]
```

Cisco Catalyst 6500 Switches in Cisco IOS Release 12.2(50)SY

```
collect routing {destination | source} [{as [{peer }]}] forwarding-status | next-hop address {ipv4
| ipv6} [bgp]}]
no collect routing {destination | source} [{as [{peer }]}] forwarding-status | next-hop address {ipv4
| ipv6} [bgp]}]
```

Syntax Description

destination	Configures one or more of the destination routing attributes fields as a nonkey field and enables collecting the values from the flows.
source	Configures one or more of the source routing attributes fields as a nonkey field and enables collecting the values from the flows.
as	Configures the autonomous system field as a nonkey field and enables collecting the value in the autonomous system field from the flows.
4-octet	(Optional) Configures the 32-bit autonomous system number as a nonkey field.
peer	(Optional) Configures the autonomous system number of the peer network as a nonkey field and enables collecting the value of the autonomous system number of the peer network from the flows.
traffic-index	Configures the Border Gateway Protocol (BGP) source or destination traffic index as a nonkey field and enables collecting the value of the BGP destination traffic index from the flows.
forwarding-status	Configures the forwarding status as a nonkey field and enables collecting the value of the forwarding status of the packet from the flows.
next-hop address	Configures the next-hop address value as a nonkey field and enables collecting information regarding the next hop from the flows. The type of address (IPv4 or IPv6) is determined by the next keyword entered.
ipv4	Specifies that the next-hop address value is an IPv4 address.
ipv6	Specifies that the next-hop address value is an IPv6 address.

bgp	(Optional) Configures the IP address of the next hop BGP network as a nonkey field and enables collecting the value of the IP address of the BGP next-hop network from the flows.
vrf input	Configures the Virtual Routing and Forwarding (VRF) ID for incoming packets as a nonkey field.
vrf output	Configures the Virtual Routing and Forwarding (VRF) ID for outgoing packets as a nonkey field.
reason	Configures the reason for the forwarding status as a nonkey field.

Command Default

The routing attributes are not configured as a nonkey field.

Command Modes

Flow record configuration (config-flow-record)

Command History

Release	Modification
12.4(9)T	This command was introduced.
12.2(31)SB2	This command was integrated into Cisco IOS Release 12.2(31)SB2.
12.0(33)S	This command was implemented on the Cisco 12000 series routers.
12.2(33)SRC	This command was integrated into Cisco IOS Release 12.2(33)SRC and implemented on the Cisco 7200 series routers.
12.4(20)T	This command was modified. The ipv6 keyword was added.
15.0(1)M	This command was modified. The vrf input keywords were added.
12.2(33)SRE	This command was integrated into Cisco IOS Release 12.2(33)SRE for the Cisco 7300 Network Processing Engine (NPE) series routers.
Cisco IOS XE Release 3.2S	This command was modified. The 4-octet keyword was added.
15.1(3)T	This command was integrated into Cisco IOS Release 15.1(3)T for Cisco Performance Monitor with only the forwarding-status keyword and the addition of the reason keyword.
12.2(58)SE	This command was integrated into Cisco IOS Release 12.2(58)SE for Cisco Performance Monitor with only the forwarding-status keyword and the addition of the reason keyword.
12.2(50)SY	This command was modified. The traffic-index and vrf input keywords were not supported in Cisco IOS Release 12.2(50)SY.
Cisco IOS XE Release 3.8S	This command was modified. The vrf output keyword was added.

Usage Guidelines

This command can be used with both Flexible NetFlow and Performance Monitor. These products use different commands to enter the configuration mode in which you issue this command; however the mode prompt is the same for both products. For Flexible NetFlow, the mode is also known as Flexible NetFlow flow record

configuration mode. For Performance Monitor, the mode is also known as Performance Monitor flow record configuration mode. Here we refer to them both as flow record configuration mode.

The Flexible NetFlow and Performance Monitor **collect** commands are used to configure nonkey fields for the flow monitor record and to enable capturing the values in the fields for the flow created with the record. The values in nonkey fields are added to flows to provide additional information about the traffic in the flows. A change in the value of a nonkey field does not create a new flow. In most cases the values for nonkey fields are taken from only the first packet in the flow.

Cisco Performance Monitor in Cisco IOS Release 15.1(3)T and 12.2(58)SE

The **reason** keyword was added and only the **forwarding-status** keyword is available. You must first enter the **flow record type performance-monitor** command.

collect routing source as [peer]

This command collects the 16-bit autonomous system number based on a lookup of the router's routing table using the source IP address. The optional **peer** keyword provides the expected next network, as opposed to the originating network.

collect routing source as 4-octet [peer 4-octet]

This command collects the 32-bit autonomous system number based on a lookup of the router's routing table using the source IP address. The optional **peer** keyword provides the expected next network, as opposed to the originating network.

collect routing destination as [peer]

This command collects the 16-bit autonomous system number based on a lookup of the router's routing table using the destination IP address. The optional **peer** keyword provides the expected next network, as opposed to the destination network.

collect routing destination as 4-octet [peer 4-octet]

This command collects the 32-bit autonomous system number based on a lookup of the router's routing table using the destination IP address. The **peer** keyword provides the expected next network, as opposed to the destination network.

collect routing source traffic-index

This command collects the traffic-index field based on the source autonomous system for this flow. The traffic-index field is a value propagated through BGP.

This command is not supported for IPv6.

collect routing destination traffic-index

This command collects the traffic-index field based on the destination autonomous system for this flow. The traffic-index field is a value propagated through BGP.

This command is not supported for IPv6.

collect routing forwarding-status

This command collects a field to indicate if the packets were successfully forwarded. The field is in two parts and may be up to 4 bytes in length. For the releases specified in the Command History table, only the status field is used:

```
+-----+
| S | Reason |
| t | codes  |
```



```

| a | or      |
| t | flags   |
| u |         |
| s |         |
+--+--+--+--+--+--+
 0 1 2 3 4 5 6 7
Status:
00b=Unknown, 01b = Forwarded, 10b = Dropped, 11b = Consumed

```

collect routing vrf input

This command collects the VRF ID from incoming packets on a router. In the case where VRFs are associated with an interface via methods such as VRF Selection Using Policy Based Routing/Source IP Address, a VRF ID of 0 will be recorded. If a packet arrives on an interface that does not belong to a VRF, a VRF ID of 0 is recorded.

collect routing vrf output

This command collects the outgoing VRF ID for outgoing packets on a router based on the VRF associated with the outgoing interface.

Examples

The following example configures the 16-bit autonomous system number based on a lookup of the router's routing table using the source IP address as a nonkey field:

```

Router(config)# flow record FLOW-RECORD-1
Router(config-flow-record)# collect routing source as

```

The following example configures the 16-bit autonomous system number based on a lookup of the router's routing table using the destination IP address as a nonkey field:

```

Router(config)# flow record FLOW-RECORD-1
Router(config-flow-record)# collect routing destination as

```

The following example configures the value in the traffic-index field based on the source autonomous system for a flow as a nonkey field:

```

Router(config)# flow record FLOW-RECORD-1
Router(config-flow-record)# collect routing source traffic-index

```

The following example configures the forwarding status as a nonkey field:

```

Router(config)# flow record FLOW-RECORD-1
Router(config-flow-record)# collect routing forwarding-status

```

The following example configures the VRF ID for incoming packets as a nonkey field for a Flexible NetFlow flow record:

```

Router(config)# flow record FLOW-RECORD-1
Router(config-flow-record)# collect routing vrf input

```

The following example configures the VRF ID for outgoing packets as a nonkey field for a Flexible NetFlow flow record:

```

Router(config)# flow record FLOW-RECORD-1
Router(config-flow-record)# collect routing vrf output

```

Cisco Performance Monitor in Cisco IOS Release 15.1(3)T and 12.2(58)SE

The following example configures the forwarding status as a nonkey field for a Performance Monitor flow record:

```
Router(config)# flow record type performance-monitor RECORD-1
Router(config-flow-record)# collect routing forwarding-status reason
```

Related Commands

Command	Description
flow record	Creates a flow record, and enters Flexible NetFlow flow record configuration mode.
flow record type performance-monitor	Creates a flow record for Performance Monitor.

collect routing is-multicast

To configure the use of the is-multicast field (indicating that the IPv4 traffic is multicast traffic) as a nonkey field, use the **collect routing is-multicast** command in flow record configuration mode. To disable the use of the is-multicast field as a nonkey field for a flow record, use the **no** form of this command.

collect routing is-multicast
no collect routing is-multicast

Syntax Description

This command has no arguments or keywords

Command Default

The is-multicast field is not configured as a nonkey field.

Command Modes

Flow record configuration (config-flow-record)

Command History

Release	Modification
12.4(22)T	This command was introduced.
12.2(33)SRE	This command was integrated into Cisco IOS Release 12.2(33)SRE for the Cisco 7200 and Cisco 7300 Network Processing Engine (NPE) series routers.
15.2(2)T	This command was integrated into Cisco IOS Release 15.2(2)T for Cisco Performance Monitor.
Cisco IOS XE Release 3.5S	This command was integrated into Cisco IOS XE Release 3.5S for Cisco Performance Monitor.

Usage Guidelines

This command can be used with both Flexible NetFlow and Performance Monitor. These products use different commands to enter the configuration mode in which you issue this command, however the mode prompt is the same for both products. For Performance Monitor, you must first enter the **flow record type performance-monitor** command before you can use this command.

Because the mode prompt is the same for both products, here we refer to the command mode for both products as flow record configuration mode. However, for Flexible NetFlow, the mode is also known as Flexible NetFlow flow record configuration mode; and for Performance Monitor, the mode is also known as Performance Monitor flow record configuration mode.

The Flexible NetFlow collect commands are used to configure nonkey fields for the flow monitor record and to enable capturing the values in the fields for the flow created with the record. The values in nonkey fields are added to flows to provide additional information about the traffic in the flows. A change in the value of a nonkey field does not create a new flow. In most cases the values for nonkey fields are taken from only the first packet in the flow.

Examples

The following example configures the is-multicast field as a nonkey field:

```
Router(config)# flow record FLOW-RECORD-1
Router(config-flow-record)# collect routing is-multicast
```

Cisco Performance Monitor in Cisco IOS Release 15.2(2)T and XE 3.5S

The following example configures the is-multicast field as a nonkey field:

```
Router(config)# flow record type performance-monitor RECORD-1
Router(config-flow-record)# collect routing is-multicast
```

Related Commands

Command	Description
flow record	Creates a flow record, and enters Flexible NetFlow flow record configuration mode.
flow record type performance-monitor	Creates a flow record, and enters Performance Monitor flow record configuration mode.

collect services pfr

To configure the Performance Routing (PfR) traffic class ID and the primary controller ID per packet as a nonkey field for a flow record, use the **collect services pfr** command in Flexible NetFlow flow record configuration mode. To disable the use of the PfR IDs as a nonkey field for a flow record, use the **no** form of this command.

```
collect services pfr {traffic-class-id | mc-id}
no collect services pfr {traffic-class-id | mc-id}
```

Syntax Description

traffic-class-id	Configures the Performance Routing (PfR) traffic class ID per packet as a nonkey field.
mc-id	Configures the Performance Routing (PfR) primary controller ID per packet as a nonkey field.

Command Default

The PfR IDs per packet are not configured as a nonkey field.

Command Modes

Flexible NetFlow flow record configuration (config-flow-record)

Command History

Release	Modification
Cisco IOS XE Release 3.9S	This command was introduced.

Usage Guidelines

The Flexible NetFlow **collect** commands are used to configure nonkey fields for the flow monitor record and to enable capturing the values in the fields for the flow created with the record. The values in nonkey fields are added to flows to provide additional information about the traffic in the flows. A change in the value of a nonkey field does not create a new flow. In most cases the values for nonkey fields are taken from only the first packet in the flow.

Examples

The following example configures the PfR traffic class ID per packet as a nonkey field:

```
Router(config)# flow record FLOW-RECORD-1
Router(config-flow-record)# collect services pfr traffic-class-id
```

Related Commands

Command	Description
flow record	Creates a flow record for Flexible NetFlow.

collect timestamp absolute

To configure the absolute time of the first seen or last seen packet in a flow as a nonkey field for a flow record, use the **collect timestamp absolute** command in Flexible NetFlow flow record configuration mode. To disable the use of the first seen or last seen packet in a flow as a nonkey field for a flow record, use the **no** form of this command.

```
collect timestamp absolute {first | last}
no collect timestamp absolute {first | last}
```

Syntax Description

first Configures the absolute time that the first packet was seen from the flows as a nonkey field and enables collecting time stamps based on the system uptime for the time the first packet was seen from the flows.

last Configures the absolute time that the last packet was seen from the flows as a nonkey field and enables collecting time stamps based on the system uptime for the time the most recent packet was seen from the flows.

Command Default

The absolute time field is not configured as a nonkey field.

Command Modes

Flexible NetFlow flow record configuration (config-flow-record)

Command History

Release	Modification
Cisco IOS XE Release 3.2SE	This command was introduced.

Usage Guidelines

The Flexible NetFlow collect commands are used to configure nonkey fields for the flow monitor record and to enable capturing the values in the fields for the flow created with the record. The values in nonkey fields are added to flows to provide additional information about the traffic in the flows. A change in the value of a nonkey field does not create a new flow. In most cases the values for nonkey fields are taken from only the first packet in the flow.

Example

The following example configures time stamps for the absolute time that the first packet was seen from the flows as a nonkey field:

```
Router(config)# flow record FLOW-RECORD-1
Router(config-flow-record)# collect timestamp absolute first
```

The following example configures the time stamps for the absolute time that the most recent packet was seen from the flows as a nonkey field:

```
Router(config)# flow record FLOW-RECORD-1
Router(config-flow-record)# collect timestamp absolute last
```

Related Commands

Command	Description
flow record	Creates a flow record, and enters Flexible NetFlow flow record configuration mode.

collect timestamp sys-uptime

To configure the system uptime of the first seen or last seen packet in a flow as a nonkey field for a flow record, use the **collect timestamp sys-uptime** command in flow record configuration mode. To disable the use of the first seen or last seen packet in a flow as a nonkey field for a flow record, use the **no** form of this command.

```
collect timestamp sys-uptime {first | last}
no collect timestamp sys-uptime {first | last}
```

Syntax Description

first	Configures the system uptime for the time the first packet was seen from the flows as a nonkey field and enables collecting time stamps based on the system uptime for the time the first packet was seen from the flows.
last	Configures the system uptime for the time the last packet was seen from the flows as a nonkey field and enables collecting time stamps based on the system uptime for the time the most recent packet was seen from the flows.

Command Default

The system uptime field is not configured as a nonkey field.

Command Modes

Flow record configuration (config-flow-record)

Command History

Release	Modification
12.4(9)T	This command was introduced.
12.2(31)SB2	This command was integrated into Cisco IOS Release 12.2(31)SB2.
12.0(33)S	This command was implemented on the Cisco 12000 series routers.
12.2(33)SRC	Support for this command was added for Cisco 7200 series routers in Cisco IOS Release 12.2(33)SRC.
12.2(33)SRE	This command was integrated into Cisco IOS Release 12.2(33)SRE for the Cisco 7300 Network Processing Engine (NPE) series routers.
12.2(50)SY	This command was integrated into Cisco IOS Release 12.2(50)SY.
15.2(2)T	This command was integrated into Cisco IOS Release 15.2(2)T for Cisco Performance Monitor.
Cisco IOS XE Release 3.5S	This command was integrated into Cisco IOS XE Release 3.5S for Cisco Performance Monitor.

Usage Guidelines

This command can be used with both Flexible NetFlow and Performance Monitor. These products use different commands to enter the configuration mode in which you issue this command, however the mode prompt is the same for both products. For Performance Monitor, you must first enter the **flow record type performance-monitor** command before you can use this command.

Because the mode prompt is the same for both products, here we refer to the command mode for both products as flow record configuration mode. However, for Flexible NetFlow, the mode is also known as Flexible NetFlow flow record configuration mode; and for Performance Monitor, the mode is also known as Performance Monitor flow record configuration mode.

The Flexible NetFlow collect commands are used to configure nonkey fields for the flow monitor record and to enable capturing the values in the fields for the flow created with the record. The values in nonkey fields are added to flows to provide additional information about the traffic in the flows. A change in the value of a nonkey field does not create a new flow. In most cases the values for nonkey fields are taken from only the first packet in the flow.

Examples

The following example configures time stamps based on the system uptime for the time the first packet was seen from the flows as a nonkey field:

```
Router(config)# flow record FLOW-RECORD-1
Router(config-flow-record)# collect timestamp sys-uptime first
```

The following example configures the time stamps based on the system uptime for the time the most recent packet was seen from the flows as a nonkey field:

```
Router(config)# flow record FLOW-RECORD-1
Router(config-flow-record)# collect timestamp sys-uptime last
```

Cisco Performance Monitor in Cisco IOS Release 15.2(2)T and XE 3.5S

The following example configures the time stamps based on the system uptime for the time the most recent packet was seen from the flows as a nonkey field:

```
Router(config)# flow record type performance-monitor RECORD-1
Router(config-flow-record)# collect timestamp sys-uptime last
```

Related Commands

Command	Description
flow record	Creates a flow record, and enters Flexible NetFlow flow record configuration mode.
flow record type performance-monitor	Creates a flow record, and enters Performance Monitor flow record configuration mode.

collect transport

To configure one or more of the transport layer fields as a nonkey field for a flow record, use the **collect transport** command in flow record configuration mode. To disable the use of one or more of the transport layer fields as a nonkey field for a flow record, use the **no** form of this command.

collect transport {**destination-port** | **igmp type** | **source-port**}

no collect transport {**destination-port** | **igmp type** | **source-port**}

Syntax Description

destination-port	Configures the destination port as a nonkey field and enables collecting the value of the destination port from the flows.
igmp type	Configures the Internet Group Management Protocol (IGMP) type as a nonkey field and enables collecting the value of the IGMP type from the flows.
source-port	Configures the source port as a nonkey field and enables collecting the value of the source port from the flows.

Command Default

The transport layer fields are not configured as a nonkey field.

Command Modes

Flow record configuration (config-flow-record)

Command History

Release	Modification
12.4(9)T	This command was introduced.
12.2(31)SB2	This command was integrated into Cisco IOS Release 12.2(31)SB2.
12.0(33)S	This command was implemented on the Cisco 12000 series routers.
12.2(33)SRC	Support for this command was added for Cisco 7200 series routers in Cisco IOS Release 12.2(33)SRC.
12.2(33)SRE	This command was integrated into Cisco IOS Release 12.2(33)SRE for the Cisco 7300 Network Processing Engine (NPE) series routers.
15.2(2)T	This command was integrated into Cisco IOS Release 15.2(2)T for Cisco Performance Monitor.
Cisco IOS XE Release 3.5S	This command was integrated into Cisco IOS XE Release 3.5S for Cisco Performance Monitor.

Usage Guidelines

This command can be used with both Flexible NetFlow and Performance Monitor. These products use different commands to enter the configuration mode in which you issue this command, however the mode prompt is the same for both products. For Performance Monitor, you must first enter the **flow record type performance-monitor** command before you can use this command.

Because the mode prompt is the same for both products, here we refer to the command mode for both products as flow record configuration mode. However, for Flexible NetFlow, the mode is also known as Flexible

NetFlow flow record configuration mode; and for Performance Monitor, the mode is also known as Performance Monitor flow record configuration mode.

The Flexible NetFlow collect commands are used to configure nonkey fields for the flow monitor record and to enable capturing the values in the fields for the flow created with the record. The values in nonkey fields are added to flows to provide additional information about the traffic in the flows. A change in the value of a nonkey field does not create a new flow. In most cases the values for nonkey fields are taken from only the first packet in the flow.

Examples

The following example configures the transport destination port as a nonkey field:

```
Router(config)# flow record FLOW-RECORD-1
Router(config-flow-record)# collect transport destination-port
```

The following example configures the transport source port as a nonkey field:

```
Router(config)# flow record FLOW-RECORD-1
Router(config-flow-record)# collect transport source-port
```

Cisco Performance Monitor in Cisco IOS Release 15.2(2)T and XE 3.5S

The following example configures the transport source port as a nonkey field:

```
Router(config)# flow record type performance-monitor RECORD-1
Router(config-flow-record)# collect transport source-port
```

Related Commands

Command	Description
flow record	Creates a flow record, and enters Flexible NetFlow flow record configuration mode.
flow record type performance-monitor	Creates a flow record, and enters Performance Monitor flow record configuration mode.

collect transport icmp ipv4

To configure the internet control message protocol (ICMP) IPv4 type field and the code field as nonkey fields for a flow record, use the **collect transport icmp ipv4** command in flow record configuration mode. To disable the use of the ICMP IPv4 type field and code field as nonkey fields for a flow record, use the **no** form of this command.

```
collect transport icmp ipv4 {code | type}
no collect transport icmp ipv4 {code | type}
```

Syntax Description

code	Configures the ICMP code as a nonkey field and enables collecting the value of the ICMP code from the flow.
type	Configures the ICMP type as a nonkey field and enables collecting the value of the ICMP type from the flow.

Command Default

The ICMP IPv4 type field and the code field are not configured as nonkey fields.

Command Modes

Flow record configuration (config-flow-record)

Command History

Release	Modification
12.4(9)T	This command was introduced.
12.2(31)SB2	This command was integrated into Cisco IOS Release 12.2(31)SB2.
12.0(33)S	This command was implemented on the Cisco 12000 series routers.
12.2(33)SRC	Support for this command was added for Cisco 7200 series routers in Cisco IOS Release 12.2(33)SRC.
12.2(33)SRE	This command was integrated into Cisco IOS Release 12.2(33)SRE for the Cisco 7300 Network Processing Engine (NPE) series routers.
15.2(2)T	This command was integrated into Cisco IOS Release 15.2(2)T for Cisco Performance Monitor.
Cisco IOS XE Release 3.5S	This command was integrated into Cisco IOS XE Release 3.5S for Cisco Performance Monitor.

Usage Guidelines

This command can be used with both Flexible NetFlow and Performance Monitor. These products use different commands to enter the configuration mode in which you issue this command, however the mode prompt is the same for both products. For Performance Monitor, you must first enter the **flow record type performance-monitor** command before you can use this command.

Because the mode prompt is the same for both products, here we refer to the command mode for both products as flow record configuration mode. However, for Flexible NetFlow, the mode is also known as Flexible NetFlow flow record configuration mode; and for Performance Monitor, the mode is also known as Performance Monitor flow record configuration mode.

The Flexible NetFlow collect commands are used to configure nonkey fields for the flow monitor record and to enable capturing the values in the fields for the flow created with the record. The values in nonkey fields are added to flows to provide additional information about the traffic in the flows. A change in the value of a nonkey field does not create a new flow. In most cases the values for nonkey fields are taken from only the first packet in the flow.

Examples

The following example configures the ICMP IPv4 code field as a nonkey field:

```
Router(config)# flow record FLOW-RECORD-1
Router(config-flow-record)# collect transport icmp ipv4 code
```

The following example configures the ICMP IPv4 type field as a nonkey field:

```
Router(config)# flow record FLOW-RECORD-1
Router(config-flow-record)# collect transport icmp ipv4 type
```

Cisco Performance Monitor in Cisco IOS Release 15.2(2)T and XE 3.5S

The following example configures the ICMP IPv4 type field as a nonkey field:

```
Router(config)# flow record type performance-monitor RECORD-1
Router(config-flow-record)# collect transport icmp ipv4 type
```

Related Commands

Command	Description
flow record	Creates a flow record, and enters Flexible NetFlow flow record configuration mode.
flow record type performance-monitor	Creates a flow record, and enters Performance Monitor flow record configuration mode.

collect transport icmp ipv6

To configure the Internet Control Message Protocol (ICMP) IPv6 type field and code field as nonkey fields for a flow record, use the **collect transport icmp ipv6** command in flow record configuration mode. To disable the use of the ICMP IPv6 type field and code field as nonkey fields for a flow record, use the **no** form of this command.

```
collect transport icmp ipv6 {code | type}
no collect transport icmp ipv6 {code | type}
```

Syntax Description

code	Configures the ICMP code as a nonkey field and enables collecting the value of the ICMP code from the flow.
type	Configures the ICMP type as a nonkey field and enables collecting the value of the ICMP type from the flow.

Command Default

The ICMP IPv6 type field and code field are not configured as nonkey fields.

Command Modes

Flow record configuration (config-flow-record)

Command History

Release	Modification
12.4(20)T	This command was introduced.
12.2(33)SRE	This command was integrated into Cisco IOS Release 12.2(33)SRE for the Cisco 7200 and Cisco 7300 Network Processing Engine (NPE) series routers.
15.2(2)T	This command was integrated into Cisco IOS Release 15.2(2)T for Cisco Performance Monitor.
Cisco IOS XE Release 3.5S	This command was integrated into Cisco IOS XE Release 3.5S for Cisco Performance Monitor.

Usage Guidelines

This command can be used with both Flexible NetFlow and Performance Monitor. These products use different commands to enter the configuration mode in which you issue this command, however the mode prompt is the same for both products. For Performance Monitor, you must first enter the **flow record type performance-monitor** command before you can use this command.

Because the mode prompt is the same for both products, here we refer to the command mode for both products as flow record configuration mode. However, for Flexible NetFlow, the mode is also known as Flexible NetFlow flow record configuration mode; and for Performance Monitor, the mode is also known as Performance Monitor flow record configuration mode.

The Flexible NetFlow collect commands are used to configure nonkey fields for the flow monitor record and to enable capturing the values in the fields for the flow created with the record. The values in nonkey fields are added to flows to provide additional information about the traffic in the flows. A change in the value of a nonkey field does not create a new flow. In most cases the values for nonkey fields are taken from only the first packet in the flow.

Examples

The following example configures the ICMP IPv6 code field as a nonkey field:

```
Router(config)# flow record FLOW-RECORD-1
Router(config-flow-record)# collect transport icmp ipv6 code
```

The following example configures the ICMP IPv6 type field as a nonkey field:

```
Router(config)# flow record FLOW-RECORD-1
Router(config-flow-record)# collect transport icmp ipv6 type
```

Cisco Performance Monitor in Cisco IOS Release 15.2(2)T and XE 3.5S

The following example configures the ICMP IPv6 type field as a nonkey field:

```
Router(config)# flow record type performance-monitor RECORD-1
Router(config-flow-record)# collect transport icmp ipv6 type
```

Related Commands

Command	Description
flow record	Creates a flow record, and enters Flexible NetFlow flow record configuration mode.
flow record type performance-monitor	Creates a flow record, and enters Performance Monitor flow record configuration mode.

collect transport tcp

To configure one or more of the TCP fields as a nonkey field for a flow record, use the **collect transport tcp** command in flow record configuration mode. To disable the use of one or more of the TCP fields as a nonkey field for a flow record, use the **no** form of this command.

```
collect transport tcp {acknowledgement-number | destination-port | flags [{ack | cwr | ece | fin | psh
| rst | syn | urg}]} | header-length | maximum-segment-size | sequence-number | source-port | urgent-pointer
| window-size | window-size-average | window-size-maximum | window-size-minimum}
no collect transport tcp {acknowledgement-number | destination-port | flags [{ack | cwr | ece | fin |
psh | rst | syn | urg}]} | header-length | maximum-segment-size | sequence-number | source-port |
urgent-pointer | window-size | window-size-average | window-size-maximum | window-size-minimum}
```

Cisco Catalyst 6500 Switches in Cisco IOS Release 12.2(50)SY

```
collect transport tcp flags [{ack | cwr | ece | fin | psh | rst | syn | urg}]
no collect transport tcp flags [{ack | cwr | ece | fin | psh | rst | syn | urg}]
```

Cisco IOS XE Release 3.2SE

```
collect transport tcp flags [{ack | cwr | ece | fin | psh | rst | syn | urg}]
no collect transport tcp flags [{ack | cwr | ece | fin | psh | rst | syn | urg}]
```

Syntax Description

acknowledgement- number	Configures the TCP acknowledgement number as a nonkey field and enables collecting the value of the TCP acknowledgment number from the flow.
destination-port	Configures the TCP destination port as a nonkey field and enables collecting the value of the TCP destination port from the flow.
flags	Configures one or more of the TCP flags as a nonkey field and enables collecting the values from the flow.
ack	(Optional) Configures the TCP acknowledgment flag as a nonkey field.
cwr	(Optional) Configures the TCP congestion window reduced flag as a nonkey field.
ece	(Optional) Configures the TCP Explicit Congestion Notification echo (ECE) flag as a nonkey field.
fin	(Optional) Configures the TCP finish flag as a nonkey field.
psh	(Optional) Configures the TCP push flag as a nonkey field.
rst	(Optional) Configures the TCP reset flag as a nonkey field.
syn	(Optional) Configures the TCP synchronize flag as a nonkey field.
urg	(Optional) Configures the TCP urgent flag as a nonkey field.
header-length	Configures the TCP header length (in 32-bit words) as a nonkey field and enables collecting the value of the TCP header length from the flow.

maximum-segment-size	Configures the maximum segment size as a nonkey field and enables collecting the values from the flow.
sequence-number	Configures the TCP sequence number as a nonkey field and enables collecting the value of the TCP sequence number from the flow.
source-port	Configures the TCP source port as a nonkey field and enables collecting the value of the TCP source port from the flow.
urgent-pointer	Configures the TCP urgent pointer as a nonkey field and enables collecting the value of the TCP urgent pointer from the flow.
window-size	Configures the TCP window size as a nonkey field and enables collecting the value of the TCP window size from the flow.
window-size-average	Configures the average window size as a nonkey field and enables collecting the values from the flow.
window-size-maximum	Configures the maximum window size as a nonkey field and enables collecting the values from the flow.
window-size-minimum	Configures the minimum window size as a nonkey field and enables collecting the values from the flow.

Command Default

The TCP fields are not configured as a nonkey field.

Command Modes

Flow record configuration (config-flow-record)

Command History

Release	Modification
12.4(9)T	This command was introduced.
12.2(31)SB2	This command was integrated into Cisco IOS Release 12.2(31)SB2.
12.0(33)S	This command was implemented on the Cisco 12000 series routers.
12.2(33)SRC	Support for this command was added for Cisco 7200 series routers in Cisco IOS Release 12.2(33)SRC.
12.2(33)SRE	This command was integrated into Cisco IOS Release 12.2(33)SRE for the Cisco 7300 Network Processing Engine (NPE) series routers.
12.2(50)SY	This command was integrated into Cisco IOS Release 12.2(50)SY without the support of the acknowledgement-number , destination-port , header-length , sequence-number , source-port , urgent-pointer , and window-size keywords.
15.2(2)T	This command was integrated into Cisco IOS Release 15.2(2)T for Cisco Performance Monitor.
Cisco IOS XE Release 3.5S	This command was integrated into Cisco IOS XE Release 3.5S for Cisco Performance Monitor.

Release	Modification
Cisco IOS XE Release 3.6S	This command was modified. The maximum-segment-size , window-size-average , window-size-maximum , and window-size-minimum keywords were added into Cisco IOS XE Release 3.6S for Cisco Performance Monitor.
Cisco IOS XE Release 3.2SE	This command was integrated into Cisco IOS XE Release 3.2SE without the support for the acknowledgement-number , destination-port , header-length , sequence-number , source-port , urgent-pointer , and window-size keywords.

Usage Guidelines

This command can be used with both Flexible NetFlow and Performance Monitor. These products use different commands to enter the configuration mode in which you issue this command, however the mode prompt is the same for both products. For Performance Monitor, you must first enter the **flow record type performance-monitor** command before you can use this command.

Because the mode prompt is the same for both products, here we refer to the command mode for both products as flow record configuration mode. However, for Flexible NetFlow, the mode is also known as Flexible NetFlow flow record configuration mode; and for Performance Monitor, the mode is also known as Performance Monitor flow record configuration mode.

The **collect** commands are used to configure nonkey fields for the flow monitor record and to enable capturing the values in the fields for the flow created with the record. The values in nonkey fields are added to flows to provide additional information about the traffic in the flows. A change in the value of a nonkey field does not create a new flow. In most cases the values for nonkey fields are taken from only the first packet in the flow.

collect transport tcp flags ece

For more information about ECN echo, refer to RFC 3168 *The Addition of Explicit Congestion Notification (ECN) to IP*, at the following URL: <http://www.ietf.org/rfc/rfc3168.txt>.

Examples

The following example configures the TCP acknowledgment number as a nonkey field:

```
Router(config)# flow record FLOW-RECORD-1
Router(config-flow-record)# collect transport tcp acknowledgement-number
```

The following example configures the TCP source port as a nonkey field:

```
Router(config)# flow record FLOW-RECORD-1
Router(config-flow-record)# collect transport tcp source-port
```

The following example configures the TCP acknowledgment flag as a nonkey field:

```
Router(config)# flow record FLOW-RECORD-1
Router(config-flow-record)# collect transport tcp flags ack
```

The following example configures the TCP finish flag as a nonkey field:

```
Router(config)# flow record FLOW-RECORD-1
Router(config-flow-record)# collect transport tcp flags fin
```

The following example configures the TCP reset flag as a nonkey field:

```
Router(config)# flow record FLOW-RECORD-1
Router(config-flow-record)# collect transport tcp flags rst
```

Cisco Performance Monitor in Cisco IOS Release 15.2(2)T and XE 3.5S

The following example configures the TCP reset flag as a nonkey field:

```
Router(config)# flow record type performance-monitor RECORD-1
Router(config-flow-record)# collect transport tcp flags rst
```

Related Commands

Command	Description
flow record	Creates a flow record, and enters Flexible NetFlow flow record configuration mode.
flow record type performance-monitor	Creates a flow record, and enters Performance Monitor flow record configuration mode.

collect transport udp

To configure one or more of the user datagram protocol UDP fields as a nonkey field for a flow record, use the **collect transport udp** command in flow record configuration mode. To disable the use of one or more of the UDP fields as a nonkey field for a flow record, use the **no** form of this command.

collect transport udp {destination-port | message-length | source-port}

no collect transport udp {destination-port | message-length | source-port}

Syntax Description

destination-port	Configures the UDP destination port as a nonkey field and enables collecting the value of the UDP destination port fields from the flow.
message-length	Configures the UDP message length as a nonkey field and enables collecting the value of the UDP message length fields from the flow.
source-port	Configures the UDP source port as a nonkey field and enables collecting the value of the UDP source port fields from the flow.

Command Default

The UDP fields are not configured as nonkey fields.

Command Modes

Flow record configuration (config-flow-record)

Command History

Release	Modification
12.4(9)T	This command was introduced.
12.2(31)SB2	This command was integrated into Cisco IOS Release 12.2(31)SB2.
12.0(33)S	This command was implemented on the Cisco 12000 series routers.
12.2(33)SRC	Support for this command was added for Cisco 7200 series routers in Cisco IOS Release 12.2(33)SRC.
12.2(33)SRE	This command was integrated into Cisco IOS Release 12.2(33)SRE for the Cisco 7300 Network Processing Engine (NPE) series routers.
15.2(2)T	This command was integrated into Cisco IOS Release 15.2(2)T for Cisco Performance Monitor.
Cisco IOS XE Release 3.5S	This command was integrated into Cisco IOS XE Release 3.5S for Cisco Performance Monitor.

Usage Guidelines

This command can be used with both Flexible NetFlow and Performance Monitor. These products use different commands to enter the configuration mode in which you issue this command, however the mode prompt is the same for both products. For Performance Monitor, you must first enter the **flow record type performance-monitor** command before you can use this command.

Because the mode prompt is the same for both products, here we refer to the command mode for both products as flow record configuration mode. However, for Flexible NetFlow, the mode is also known as Flexible

NetFlow flow record configuration mode; and for Performance Monitor, the mode is also known as Performance Monitor flow record configuration mode.

The Flexible NetFlow collect commands are used to configure nonkey fields for the flow monitor record and to enable capturing the values in the fields for the flow created with the record. The values in nonkey fields are added to flows to provide additional information about the traffic in the flows. A change in the value of a nonkey field does not create a new flow. In most cases the values for nonkey fields are taken from only the first packet in the flow.

Examples

The following example configures the UDP destination port as a nonkey field:

```
Router(config)# flow record FLOW-RECORD-1
Router(config-flow-record)# collect transport udp destination-port
```

The following example configures the UDP message length as a nonkey field:

```
Router(config)# flow record FLOW-RECORD-1
Router(config-flow-record)# collect transport udp message-length
```

The following example configures the UDP source port as a non-key field:

```
Router(config)# flow record FLOW-RECORD-1
Router(config-flow-record)# collect transport udp source-port
```

Cisco Performance Monitor in Cisco IOS Release 15.2(2)T and XE 3.5S

The following example configures the UDP source port as a nonkey field:

```
Router(config)# flow record type performance-monitor RECORD-1
Router(config-flow-record)# collect transport udp source-port
```

Related Commands

Command	Description
flow record	Creates a flow record, and enters Flexible NetFlow flow record configuration mode.
flow record type performance-monitor	Creates a flow record, and enters Performance Monitor flow record configuration mode.

debug flow exporter

To enable debugging output for Flexible NetFlow flow exporters, use the **debug flow exporter** command in privileged EXEC mode. To disable debugging output, use the **no** form of this command.

debug flow exporter [[name] *exporter-name*] [error] [event] [packets *number*]
no debug flow exporter [[name] *exporter-name*] [error] [event] [packets *number*]

Syntax Description

name	(Optional) Specifies the name of a flow exporter.
<i>exporter-name</i>	(Optional) The name of a flow exporter that was previously configured.
error	(Optional) Enables debugging for flow exporter errors.
event	(Optional) Enables debugging for flow exporter events.
packets	(Optional) Enables packet-level debugging for flow exporters.
<i>number</i>	(Optional) The number of packets to debug for packet-level debugging of flow exporters. Range: 1 to 65535.

Command Modes

Privileged EXEC (#)

Command History

Release	Modification
12.4(9)T	This command was introduced.
12.2(31)SB2	This command was integrated into Cisco IOS Release 12.2(31)SB2.
12.0(33)S	This command was modified. Support for this command was implemented on the Cisco 12000 series routers.
12.2(33)SRC	This command was modified. Support for this command was implemented on the Cisco 7200 series routers.
12.2(33)SRE	This command was modified. Support for this command was implemented on the Cisco 7300 Network Processing Engine (NPE) series routers.
12.2(50)SY	This command was integrated into Cisco IOS Release 12.2(50)SY.
Cisco IOS XE Release 3.2SE	This command was integrated into Cisco IOS XE Release 3.2SE.

Examples

The following example indicates that a flow exporter packet has been queued for process send:

```
Router# debug flow exporter
May 21 21:29:12.603: FLOW EXP: Packet queued for process send
```

Related Commands

Command	Description
clear flow exporter	Clears the Flexible NetFlow statistics for exporters.

debug flow monitor

To enable debugging output for Flexible NetFlow flow monitors, use the **debug flow monitor** command in privileged EXEC mode. To disable debugging output, use the **no** form of this command.

```
debug flow monitor [error] [[name] monitor-name [cache] [error] [packets packets]]
no debug flow monitor [error] [[name] monitor-name [cache] [error] [packets packets]]
```

Syntax Description

error	(Optional) Enables debugging for flow monitor errors.
name	(Optional) Specifies the name of a flow monitor.
<i>monitor-name</i>	(Optional) The name of a flow monitor that was previously configured.
cache	(Optional) Enables debugging for the flow monitor cache.
packets	(Optional) Enables packet-level debugging for flow monitors.
<i>packets</i>	(Optional) The number of packets to debug for packet-level debugging of flow monitors. Range: 1 to 65535.

Command Modes

Privileged EXEC (#)

Command History

Release	Modification
12.4(9)T	This command was introduced.
12.2(31)SB2	This command was integrated into Cisco IOS Release 12.2(31)SB2.
12.0(33)S	This command was modified. Support for this command was implemented on the Cisco 12000 series routers.
12.2(33)SRC	This command was modified. Support for this command was implemented on the Cisco 7200 series routers.
12.2(33)SRE	This command was modified. Support for this command was implemented on the Cisco 7300 Network Processing Engine (NPE) series routers.
12.2(50)SY	This command was integrated into Cisco IOS Release 12.2(50)SY.
Cisco IOS XE Release 3.2SE	This command was integrated into Cisco IOS XE Release 3.2SE.

Examples

The following example shows that the cache for FLOW-MONITOR-1 was deleted:

```
Router# debug flow monitor FLOW-MONITOR-1 cache
May 21 21:53:02.839: FLOW MON: 'FLOW-MONITOR-1' deleted cache
```


Related Commands

Command	Description
clear flow monitor	Clears the Flexible NetFlow flow monitor.

debug flow record

To enable debugging output for Flexible NetFlow flow records, use the **debug flow record** command in privileged EXEC mode. To disable debugging output, use the **no** form of this command.

```
debug flow record [{[name] record-name | netflow-original | netflow {ipv4 | ipv6} record [peer] |
netflow-v5 | options {exporter-statistics | interface-table | sampler-table | vrf-id-name-table}}]
no debug flow record [{[name] record-name | netflow-original | netflow {ipv4 | ipv6} record [peer] |
netflow-v5 | options {exporter-statistics | interface-table | sampler-table | vrf-id-name-table}}]
```

Cisco Catalyst 6500 Switches in Cisco IOS Release 12.2(50)SY

```
debug flow record [{[name] record-name | netflow-v5 | options {exporter-statistics | interface-table
| sampler-table | vrf-id-name-table} | platform-original {ipv4 | ipv6} record [{detailed | error}]]]
no debug flow record [{[name] record-name | netflow-v5 | options {exporter-statistics | interface-table
| sampler-table | vrf-id-name-table} | platform-original {ipv4 | ipv6} record [{detailed | error}]]]
```

Cisco IOS XE Release 3.2SE

```
debug flow record [{[name] record-name | netflow {ipv4 | ipv6} record [peer] | netflow-v5 | options
sampler-table } ]
no debug flow record [{[name] record-name | netflow {ipv4 | ipv6} record [peer] | netflow-v5 |
options sampler-table } ]
```

Syntax Description

name	(Optional) Specifies the name of a flow record.
<i>record-name</i>	(Optional) Name of a user-defined flow record that was previously configured.
netflow-original	(Optional) Specifies the traditional IPv4 input NetFlow with origin autonomous systems.
netflow {ipv4 ipv6} record	(Optional) Specifies the name of the NetFlow predefined record. See the table below.
peer	(Optional) Includes peer information for the NetFlow predefined records that support the peer keyword. Note The peer keyword is not supported for every type of NetFlow predefined record. See the table below.
options	(Optional) Includes information on other flow record options.
exporter-statistics	(Optional) Includes information on the flow exporter statistics.
interface-table	(Optional) Includes information on the interface tables.
sampler-table	(Optional) Includes information on the sampler tables.
vrf-id-name-table	(Optional) Includes information on the virtual routing and forwarding (VRF) ID-to-name tables.
platform-original ipv4 record	Configures the flow monitor to use one of the predefined IPv4 records.

platform-original ipv6 record	Configures the flow monitor to use one of the predefined IPv6 records.
detailed	(Optional) Displays detailed information.
error	(Optional) Displays errors only.

Command Modes

Privileged EXEC (#)

Command History

Release	Modification
12.4(9)T	This command was introduced.
12.2(31)SB2	This command was integrated into Cisco IOS Release 12.2(31)SB2.
12.0(33)S	This command was modified. Support for this command was implemented on the Cisco 12000 series routers.
12.2(33)SRC	This command was modified. Support for this command was implemented on the Cisco 7200 series routers.
12.4(20)T	This command was modified. The ipv6 keyword was added in Cisco IOS Release 12.4(20)T.
15.0(1)M	This command was modified. The vrf-id-name-table keyword was added.
12.2(33)SRE	This command was modified. Support for this command was implemented on the Cisco 7300 Network Processing Engine (NPE) series routers.
12.2(50)SY	This command was integrated into Cisco IOS Release 12.2(50)SY without support for the netflow-original , netflow , ipv4 , netflow , ipv6 and peer keywords. The platform-original ipv4 and platform-originalipv6 keywords were added.
Cisco IOS XE Release 3.2SE	This command was integrated into Cisco IOS XE Release 3.2SE without the support for the netflow-original , options exporter-statistics , options interface-table and option vrf-id-name-table keywords.

Usage GuidelinesThe table below describes the keywords and descriptions for the *record* argument.**Table 1: Keywords and Descriptions for the record Argument**

Keyword	Description	IPv4 Support	IPv6 Support
as	Autonomous system record.	Yes	Yes
as-tos	Autonomous system and type of service (ToS) record.	Yes	—
bgp-nexthop-tos	BGP next-hop and ToS record.	Yes	—
bgp-nexthop	BGP next-hop record.	—	Yes

Keyword	Description	IPv4 Support	IPv6 Support
destination	Original 12.2(50)SY platform IPv4/IPv6 destination record.	Yes	Yes
destination-prefix	Destination prefix record. Note For IPv6, a minimum prefix mask length of 0 bits is assumed.	Yes	Yes
destination-prefix-tos	Destination prefix and ToS record.	Yes	—
destination-source	Original 12.2(50)SY platform IPv4/IPv6 destination-source record.	Yes	Yes
full	Original 12.2(50)SY platform IPv4/IPv6 full record.	Yes	Yes
interface-destination	Original 12.2(50)SY platform IPv4/IPv6 interface-destination record.	Yes	Yes
interface-destination-source	Original 12.2(50)SY platform IPv4/IPv6 interface-destination-source record.	Yes	Yes
interface-full	Original 12.2(50)SY platform IPv4/IPv6 interface-full record.	Yes	Yes
interface-source	Original 12.2(50)SY platform IPv4/IPv6 interface-source only record.	Yes	Yes
original-input	Traditional IPv4 input NetFlow.	Yes	Yes
original-output	Traditional IPv4 output NetFlow.	Yes	Yes
prefix	Source and destination prefixes record. Note For IPv6, a minimum prefix mask length of 0 bits is assumed.	Yes	Yes
prefix-port	Prefix port record. Note The peer keyword is not available for this record.	Yes	—
prefix-tos	Prefix ToS record.	Yes	—
protocol-port	Protocol ports record. Note The peer keyword is not available for this record.	Yes	Yes
protocol-port-tos	Protocol port and ToS record. Note The peer keyword is not available for this record.	Yes	—

Keyword	Description	IPv4 Support	IPv6 Support
source	Original 12.2(50)SY platform IPv4/IPv6 source only record.	Yes	Yes
source-prefix	Source autonomous system and prefix record. Note For IPv6, a minimum prefix mask length of 0 bits is assumed.	Yes	Yes
source-prefix-tos	Source prefix and ToS record.	Yes	—

Examples

The following example enables debugging for the flow record:

```
Router# debug flow record FLOW-record-1
```

Related Commands

Command	Description
flow record	Create a Flexible NetFlow flow record.

debug sampler

To enable debugging output for Flexible NetFlow samplers, use the **debug sampler** command in privileged EXEC mode. To disable debugging output, use the **no** form of this command.

```
debug sampler [{detailed | error | [name] sampler-name [{detailed | error | sampling samples}]}]
no debug sampler [{detailed | error | [name] sampler-name [{detailed | error | sampling}]}]
```

Syntax Description

detailed	(Optional) Enables detailed debugging for sampler elements.
error	(Optional) Enables debugging for sampler errors.
name	(Optional) Specifies the name of a sampler.
<i>sampler-name</i>	(Optional) Name of a sampler that was previously configured.
sampling <i>samples</i>	(Optional) Enables debugging for sampling and specifies the number of samples to debug.

Command Modes

Privileged EXEC (#)

Command History

Release	Modification
12.4(9)T	This command was introduced.
12.2(31)SB2	This command was integrated into Cisco IOS Release 12.2(31)SB2.
12.0(33)S	This command was modified. Support for this command was implemented on the Cisco 12000 series routers.
12.2(33)SRC	This command was modified. Support for this command was implemented on the Cisco 7200 series routers.
12.2(33)SRE	This command was modified. Support for this command was implemented on the Cisco 7300 Network Processing Engine (NPE) series routers.
12.2(50)SY	This command was integrated into Cisco IOS Release 12.2(50)SY.
Cisco IOS XE Release 3.2SE	This command was integrated into Cisco IOS XE Release 3.2SE.

Examples

The following sample output shows that the debug process has obtained the ID for the sampler named SAMPLER-1:

```
Router# debug sampler detailed
*Oct 28 04:14:30.883: Sampler: Sampler(SAMPLER-1: flow monitor FLOW-MONITOR-1 (ip,Et1/0,0)
get ID succeeded:1
*Oct 28 04:14:30.971: Sampler: Sampler(SAMPLER-1: flow monitor FLOW-MONITOR-1 (ip,Et0/0,I)
get ID succeeded:1
```

Related Commands

Command	Description
clear sampler	Clears the Flexible NetFlow sampler statistics.

default (Flexible NetFlow)

To configure the default values for a Flexible NetFlow (FNF) flow exporter, use the **default** command in Flexible NetFlow flow exporter configuration mode.

default {description | destination | dscp | export-protocol | option {application-table | exporter-stats | interface-table | sampler-table | vrf-table} | output-features | source | template data timeout | transport | ttl}

Cisco IOS XE Release 3.2SE

default {description | destination | dscp | export-protocol | option {exporter-stats | interface-table | sampler-table} | source | template data timeout | transport | ttl}

Syntax Description

description	Provides a description for the flow exporter.
destination	Configures the export destination.
dscp	Configures optional Differentiated Services Code Point (DSCP) values.
export-protocol	Configures the export protocol version.
option	Selects the option for exporting.
application-table	Selects the application table option.
exporter-stats	Selects the exporter statistics option.
interface-table	Selects the interface SNMP-index-to-name table option.
sampler-table	Selects the export sampler option.
vrf-table	Selects the VRF ID-to-name table option.
output-features	Sends export packets via the Cisco IOS output feature path.
source	Configures the originating interface.
template	Configures the flow exporter template.
data	Configure the flow exporter data.
timeout	Resends data based on a timeout.
transport	Configures the transport protocol.
ttl	Configures optional time-to-live (TTL) or hop limit.

Command Modes

Flexible NetFlow flow exporter configuration (config-flow-exporter)

Command History	Release	Modification
	12.4(9)T	This command was introduced.
	12.2(31)SB2	This command was integrated into Cisco IOS Release 12.2(31)SB2.
	12.2(33)SRC	This command was modified. Support for this command was implemented on the Cisco 7200 series routers.
	12.2(33)SRE	This command was modified. Support for this command was implemented on the Cisco 7300 Network Processing Engine (NPE) series routers.
	Cisco IOS XE Release 3.2SE	This command was integrated into Cisco IOS XE Release 3.2SE without the support for the option application-table , option vrf-table , and output-features keywords.

Usage Guidelines

Use the **default** command to configure the default values for an FNF flow exporter. The flow exporter information is needed to export the data metrics to a specified destination, port number, and so on.

Examples

The following example shows how to set the default destination for an FNF flow exporter:

```
Router(config)# flow exporter e1
Router(config-flow-exporter)# default destination
```

Related Commands

Command	Description
flow exporter	Creates a flow exporter.

description (Flexible NetFlow)

To configure a description for a Flexible NetFlow flow sampler, flow monitor, flow exporter, or flow record, use the **description** command in the appropriate configuration mode. To remove a description, use the **no** form of this command.

description *description*
no description

Syntax Description

<i>description</i>	Text string that describes the flow sampler, flow monitor, flow exporter, or flow record.
--------------------	---

Command Default

The default description for a Flexible NetFlow flow sampler, flow monitor, flow exporter, or flow record is “User defined”.

Command Modes

Flexible NetFlow flow exporter configuration (config-flow-exporter)
 Flexible NetFlow flow monitor configuration (config-flow-monitor)
 Flexible NetFlow flow record configuration (config-flow-record)
 Flexible NetFlow sampler configuration (config-sampler)

Command History

Release	Modification
12.4(9)T	This command was introduced.
12.2(31)SB2	This command was integrated into Cisco IOS Release 12.2(31)SB2.
12.0(33)S	This command was modified. Support for this command was implemented on the Cisco 12000 series routers.
12.2(33)SRC	This command was modified. Support for this command was implemented on the Cisco 7200 series routers.
12.2(33)SRE	This command was modified. Support for this command was implemented on the Cisco 7300 Network Processing Engine (NPE) series routers.
Cisco IOS XE 3.1S	This command was integrated into Cisco IOS XE Release 3.1S.
12.2(50)SY	This command was integrated into Cisco IOS Release 12.2(50)SY.
Cisco IOS XE Release 3.2SE	This command was integrated into Cisco IOS XE Release 3.2SE.

Examples

The following example configures a description for a flow monitor:

```
Router(config)# flow monitor FLOW-MONITOR-1
Router(config-flow-monitor)# description Monitors traffic to 172.16.100.0 255.255.255.0
```

Related Commands

Command	Description
flow exporter	Creates a flow exporter.

Command	Description
flow monitor	Creates a flow monitor.
flow record	Creates a flow record.
sampler	Creates a flow sampler.

destination

To configure an export destination for a Flexible NetFlow flow exporter, use the **destination** command in Flexible NetFlow flow exporter configuration mode. To remove an export destination for a Flexible NetFlow flow exporter, use the **no** form of this command.

destination *{{ip-addresshostname}}* | **vrf** *vrf-name*
no destination

Syntax Description

<i>ip-address</i>	IP address of the workstation to which you want to send the NetFlow information.
<i>hostname</i>	Hostname of the device to which you want to send the NetFlow information.
vrf <i>vrf-name</i>	Specifies that the export data packets are to be sent to the named Virtual Private Network (VPN) routing and forwarding (VRF) instance for routing to the destination, instead of to the global routing table.

Command Default

An export destination is not configured.

Command Modes

Flexible NetFlow flow exporter configuration (config-flow-exporter)

Command History

Release	Modification
12.4(9)T	This command was introduced.
12.2(31)SB2	This command was integrated into Cisco IOS Release 12.2(31)SB2.
12.0(33)S	This command was modified. Support for this command was implemented on the Cisco 12000 series routers.
12.2(33)SRC	This command was modified. Support for this command was implemented on the Cisco 7200 series routers.
12.2(33)SRE	This command was modified. Support for this command was implemented on the Cisco 7300 Network Processing Engine (NPE) series routers.
Cisco IOS XE Release 3.1S	This command was integrated into Cisco IOS XE Release 3.1S.
15.1(3)T	This command was modified. Support for the Cisco Performance Monitor was added.
12.2(58)SE	This command was modified. Support for the Cisco Performance Monitor was added.
12.2(50)SY	This command was integrated into Cisco IOS Release 12.2(50)SY.
15.2(2)T	This command was integrated into Cisco IOS Release 15.2(2)T and added support for exporting data to a destination using an IPv6 address.
Cisco IOS XE Release 3.2SE	This command was integrated into Cisco IOS XE Release 3.2SE.

Usage Guidelines

Each flow exporter can have only one destination address or hostname.

For some releases, you can export data to a destination using an IPv6 address.

When you configure a hostname instead of the IP address for the device, the hostname is resolved immediately and the IP address is stored in the running configuration. If the hostname-to-IP-address mapping that was used for the original domain name system (DNS) name resolution changes dynamically on the DNS server, the router does not detect this, and the exported data continues to be sent to the original IP address, resulting in a loss of data. Resolving the hostname immediately is a prerequisite of the export protocol, to ensure that the templates and options arrive before the data

Examples

The following example shows how to configure the networking device to export the Flexible NetFlow cache entry to a destination system:

```
Router(config)# flow exporter FLOW-EXPORTER-1
Router(config-flow-exporter)# destination 10.0.0.4
```

The following example shows how to configure the networking device to export the Flexible NetFlow cache entry to a destination system using a VRF named VRF-1:

```
Router(config)# flow exporter FLOW-EXPORTER-1
Router(config-flow-exporter)# destination 172.16.10.2 vrf VRF-1
```

Related Commands

Command	Description
flow exporter	Creates a flow exporter.

dscp (Flexible NetFlow)

To configure a differentiated services code point (DSCP) value for Flexible NetFlow flow exporter datagrams, use the **dscp** command in Flexible NetFlow flow exporter configuration mode. To remove a DSCP value for Flexible NetFlow flow exporter datagrams, use the **no** form of this command.

dscp *dscp*
no dscp

Syntax Description

<i>dscp</i>	The DSCP to be used in the DSCP field in exported datagrams. Range: 0 to 63. Default: 0.
-------------	--

Command Default

The differentiated services code point (DSCP) value is 0.

Command Modes

Flexible NetFlow flow exporter configuration (config-flow-exporter)

Command History

Release	Modification
12.4(9)T	This command was introduced.
12.2(31)SB2	This command was integrated into Cisco IOS Release 12.2(31)SB2.
12.0(33)S	This command was modified. Support for this command was implemented on the Cisco 12000 series routers.
12.2(33)SRC	This command was modified. Support for this command was implemented on the Cisco 7200 series routers.
12.2(33)SRE	This command was modified. Support for this command was implemented on the Cisco 7300 Network Processing Engine (NPE) series routers.
15.1(3)T	This command was modified. Support for the Cisco Performance Monitor was added.
12.2(58)SE	This command was modified. Support for the Cisco Performance Monitor was added.
12.2(50)SY	This command was integrated into Cisco IOS Release 12.2(50)SY.
Cisco IOS XE Release 3.2SE	This command was integrated into Cisco IOS XE Release 3.2SE.

Examples

The following example sets 22 as the value of the DSCP field in exported datagrams:

```
Router(config)# flow exporter FLOW-EXPORTER-1
Router(config-flow-exporter)# dscp 22
```

Related Commands

Command	Description
flow exporter	Creates a flow exporter.

execute (Flexible NetFlow)

To execute a shell function for a Flexible NetFlow (FNF) flow exporter, use the **execute** command in FNF flow exporter configuration mode.

execute *name* [{*description...*}]

Syntax Description	<i>name</i>	Name of the shell function to execute.
	<i>description</i>	(Optional) Description of the shell function parameter values. You can enter multiple descriptions.

Command Default No shell function is executed.

Command Modes FNF flow exporter configuration (config-flow-exporter)

Command History	Release	Modification
	15.4(M)	This command was introduced.

Examples The following example shows how to execute a shell function, function1:

```
Router(config)# flow exporter e1
Router(config-flow-exporter)# execute function1
```

Related Commands	Command	Description
	flow exporter	Creates a flow exporter.

exporter

To configure a flow exporter for a flow monitor, use the **exporter** command in the appropriate configuration mode. To remove a flow exporter for a flow monitor, use the **no** form of this command.

exporter *exporter-name*

no exporter *exporter-name*

Syntax Description

<i>exporter-name</i>	Name of a flow exporter that was previously configured.
----------------------	---

Command Default

An exporter is not configured.

Command Modes

Flow monitor configuration (config-flow-monitor)

Policy configuration (config-pmap-c)

Policy monitor configuration (config-pmap-c-flowmon)

Command History

Release	Modification
12.4(9)T	This command was introduced.
12.2(31)SB2	This command was integrated into Cisco IOS Release 12.2(31)SB2.
12.0(33)S	This command was modified. Support for this command was implemented on the Cisco 12000 series routers.
12.2(33)SRC	This command was modified. Support for this command was implemented on the Cisco 7200 series routers.
12.2(33)SRE	This command was modified. Support for this command was implemented on the Cisco 7300 Network Processing Engine (NPE) series routers.
Cisco IOS XE Release 3.1S	This command was integrated into Cisco IOS XE Release 3.1S.
15.1(3)T	This command was modified. Support for the Cisco Performance Monitor was added. Support was added for policy configuration mode and policy monitor configuration configuration mode.
12.2(58)SE	This command was modified. Support for the Cisco Performance Monitor was added.
12.2(50)SY	This command was integrated into Cisco IOS Release 12.2(50)SY.
Cisco IOS XE Release 3.2SE	This command was integrated into Cisco IOS XE Release 3.2SE.

Usage Guidelines

You must have already created a flow exporter by using the **flow exporter** command before you can apply the flow exporter to a flow monitor with the **exporter** command.

For Performance Monitor, you can associate a flow exporter with a flow monitor while configuring either a flow monitor, policy map, or service policy.



Note You can configure up to 5 flow exporters after using the **flow monitor type performance-monitor** command.

Examples

The following example configures an exporter for a flow monitor:

```
Device(config)# flow monitor FLOW-MONITOR-1
Device(config-flow-monitor)# exporter EXPORTER-1
```

The following example shows one of the ways to configure a flow exporter for Performance Monitor:

```
Device(config)# policy-map type performance-monitor policy-4
Device(config-pmap)# class class-4
Device(config-pmap-c)# flow monitor monitor-4
Device(config-pmap-c-flowmon)# exporter exporter-4
```

Related Commands

Command	Description
flow exporter	Creates a flow exporter.
flow monitor	Creates a flow monitor.
flow monitor type performance-monitor	Creates a flow monitor for Performance Monitor.
policy-map type performance-monitor	Creates a policy map for Performance Monitor
service-policy type performance-monitor	Associates policy map with an interface for Performance Monitor.

export-protocol

To configure the export protocol for a Flexible NetFlow exporter, use the **export-protocol** command in Flexible NetFlow flow exporter configuration mode. To restore the use of the default export protocol for a Flexible NetFlow exporter, use the **no** form of this command.

```
export-protocol {netflow-v5 | netflow-v9 | ipfix}
no export-protocol
```

Cisco IOS XE Release 3.2SE
export-protocol netflow-v9
no export-protocol

Syntax Description

netflow-v5	Configures Netflow Version 5 export as the export protocol.
netflow-v9	Configures Netflow Version 9 export as the export protocol.
ipfix	Configures IPFIX as the export protocol. The export of extracted fields from NBAR is supported only over IPFIX.

Command Default

Netflow Version 9 export is used as the export protocol for a Flexible NetFlow exporter.

Command Modes

Flexible NetFlow flow exporter configuration (config-flow-exporter)

Command History

Release	Modification
12.4(22)T	This command was introduced.
12.2(33)SRE	This command was modified. Support for this command was implemented on the Cisco 7200 and Cisco 7300 Network Processing Engine (NPE) series routers.
Cisco IOS XE Release 3.1S	This command was integrated into Cisco IOS XE Release 3.1S.
15.1(3)T	This command was modified. Support for the Cisco Performance Monitor was added.
12.2(58)SE	This command was modified. Support for the Cisco Performance Monitor was added.
15.2(4)M	This command was modified. The ipfix keyword was added in Cisco IOS Release 15.2(4)M.
Cisco IOS XE Release 3.8S	This command was integrated into Cisco IOS XE Release 3.8S.
Cisco IOS XE Release 3.2SE	This command was integrated into Cisco IOS XE Release 3.2SE without the support for the netflow-v5 and ipfix keywords.

Usage Guidelines

The NetFlow Version 5 export protocol is supported only for flow monitors that use the Flexible NetFlow predefined records.

The export of extracted fields from NBAR is supported only over IPFIX.

Examples

The following example configures Netflow Version 5 export as the export protocol for a Flexible NetFlow exporter:

```
Router(config)# flow exporter FLOW-EXPORTER-1
Router(config-flow-exporter)# export-protocol netflow-v5
```

Related Commands

Command	Description
flow exporter	Creates a flow exporter

flow exporter

To create a Flexible NetFlow flow exporter, or to modify an existing Flexible NetFlow flow exporter, and enter Flexible NetFlow flow exporter configuration mode, use the **flow exporter** command in global configuration mode. To remove a Flexible NetFlow flow exporter, use the **no** form of this command.

flow exporter *exporter-name*

no flow exporter *exporter-name*

Syntax Description

<i>exporter-name</i>	Name of the flow exporter that is being created or modified.
----------------------	--

Command Default

Flexible NetFlow flow exporters are not present in the configuration.

Command Modes

Global configuration (config)

Command History

Release	Modification
12.4(9)T	This command was introduced.
12.2(31)SB2	This command was integrated into Cisco IOS Release 12.2(31)SB2.
12.0(33)S	This command was modified. Support for this command was implemented on the Cisco 12000 series routers.
12.2(33)SRC	This command was modified. Support for this command was implemented on the Cisco 7200 series routers.
12.2(33)SRE	This command was modified. Support for this command was implemented on the Cisco 7300 Network Processing Engine (NPE) series routers.
Cisco IOS XE 3.1S	This command was integrated into Cisco IOS XE Release 3.1S.
15.1(2)S	This command was modified. A hash collision between the name supplied and any existing name is now possible. If this happens, you can retry, supplying another name
12.2(50)SY	This command was integrated into Cisco IOS Release 12.2(50)SY.
Cisco IOS XE Release 3.2SE	This command was integrated into Cisco IOS XE Release 3.2SE.

Usage Guidelines

Flow exporters export the data in the flow monitor cache to a remote system, such as a server running Flexible NetFlow collector, for analysis and storage. Flow exporters are created as separate entities in the configuration. Flow exporters are assigned to flow monitors to provide data export capability for the flow monitors. You can create several flow exporters and assign them to one or more flow monitors to provide several export destinations. You can create one flow exporter and apply it to several flow monitors.

In Cisco IOS Release 15.1(2)S and later releases, a hash collision between the name supplied and any existing name is possible. If this happens, you can retry, supplying another name.

Examples

The following example creates a flow exporter named FLOW-EXPORTER-1 and enters Flexible NetFlow flow exporter configuration mode:

```
Router(config)# flow exporter FLOW-EXPORTER-1
Router(config-flow-exporter)#
```

The following example shows the output when there is a hash collision between the name supplied and any existing name:

```
Router(config-flow-exporter)# flow exporter FLOW-EXPORTER-1
% Flow Exporter: Failure creating Flow Exporter 'FLOW-EXPORTER-1' (Hash value in use).
```

Related Commands

Command	Description
clear flow exporter	Clears the statistics for flow exporters.
debug flow exporter	Enables debugging output for flow exporters.

flow hardware

To configure Flexible NetFlow hardware parameters, use the **flowhardware** command in global configuration mode. To unconfigure Flexible NetFlow hardware parameters, use the **no** form of this command.

```
flow hardware [{egress | export threshold total-cpu-threshold-percentage [linecard
linecard-threshold-percentage] | usage notify {input | output} [table-threshold-percentage seconds]}]
no flow hardware [{egress | export threshold | usage notify {input | output}]}
```

Syntax Description

egress	(Optional) Configures hardware egress NetFlow parameters.
export threshold	(Optional) Configures export threshold parameters.
<i>total-cpu-threshold-percentage</i>	(Optional) The total CPU utilization threshold percentage.
<i>linecard-threshold-percentage</i>	(Optional) The line-card CPU utilization threshold percentage.
usage notify input	(Optional) Configures NetFlow table utilization parameters for traffic that the router is receiving.
usage notify output	(Optional) Configures NetFlow table utilization parameters for traffic that the router is transmitting.
<i>table-threshold-percentage</i>	(Optional) The NetFlow table utilization threshold percentage.
<i>seconds</i>	(Optional) The NetFlow table utilization time interval, in seconds.

Command Default

Flexible NetFlow hardware parameters are not configured.

Command Modes

Global configuration (config)

Command History

Release	Modification
12.2(50)SY	This command was introduced.

Usage Guidelines

Flow exporters export the data in the flow monitor cache to a remote system, such as a server running Flexible NetFlow collector, for analysis and storage. The number and complexity of flow records to be exported is the prime cause of CPU use in NetFlow. The CPU Friendly NetFlow Export feature (also known as Yielding NetFlow Data Export, or Yielding NDE) monitors CPU use for both the supervisor and line cards according to user-configured thresholds and dynamically adjusts the rate of export as needed.

A system reload is needed for egress NetFlow mode change. If egress NetFlow is disabled and you attempt to configure any feature that requires an egress NetFlow, an error message will be displayed indicating that egress NetFlow must be enabled for this feature to function. You should enable egress NetFlow, reload the system, and reconfigure the feature.

Examples

The following example configures CPU utilization thresholds for Flexible NetFlow flow export:

```
Router(config)# flow hardware export threshold 25 linecard 25
```

Related Commands

Command	Description
show platform flow	Displays Flexible NetFlow platform parameter information.

flow monitor

To create a Flexible NetFlow flow monitor, or to modify an existing Flexible NetFlow flow monitor, and enter Flexible NetFlow flow monitor configuration mode, use the **flow monitor** command in global configuration mode or in QoS policy-map-class configuration mode. To remove a Flexible NetFlow flow monitor, use the **no** form of this command.

flow monitor *monitor-name*

no flow monitor *monitor-name*

Syntax Description

<i>monitor-name</i>	Name of the flow monitor that is being created or modified.
---------------------	---

Command Default

Flexible NetFlow flow monitors are not present in the configuration.

Command Modes

Global configuration (config)

QoS policy-map-class configuration (config-pmap-c)

Command History

Release	Modification
12.4(9)T	This command was introduced.
12.2(31)SB2	This command was integrated into Cisco IOS Release 12.2(31)SB2.
12.0(33)S	This command was modified. Support for this command was implemented on the Cisco 12000 series routers.
12.2(33)SRC	This command was modified. Support for this command was implemented on the Cisco 7200 series routers.
12.2(33)SRE	This command was modified. Support for this command was implemented on the Cisco 7300 Network Processing Engine (NPE) series routers.
Cisco IOS XE Release 3.1S	This command was integrated into Cisco IOS XE Release 3.1S.
15.1(2)S	This command was modified. A hash collision between the name supplied and any existing name is now possible. If this happens, you can retry, supplying another name
12.2(50)SY	This command was integrated into Cisco IOS Release 12.2(50)SY.
15.2(4)M	This command was made available in QoS policy-map-class configuration mode.
Cisco IOS XE Release 3.2SE	This command was integrated into Cisco IOS XE Release 3.2SE.

Usage Guidelines

Flow monitors are the Flexible NetFlow component that is applied to interfaces to perform network traffic monitoring. Flow monitors consist of a record and a cache. You add the record to the flow monitor after you create the flow monitor. The flow monitor cache is automatically created at the time the flow monitor is applied to the first interface. Flow data is collected from the network traffic during the monitoring process based on the key and nonkey fields in the flow monitor's record and stored in the flow monitor cache.

In Cisco IOS Release 15.1(2)S and later releases, a hash collision between the name supplied and any existing name is possible. If this happens, you can retry, supplying another name.

Examples

The following example creates a flow monitor named FLOW-MONITOR-1 and enters Flexible NetFlow flow monitor configuration mode:

```
Router(config)# flow monitor FLOW-MONITOR-1
Router(config-flow-monitor)#
```

The following example shows the output when there is a hash collision between the name supplied and any existing name:

```
Router(config)# flow monitor FLOW-MONITOR-1
% Flow Monitor: could not create monitor.
```

Related Commands

Command	Description
clear flow monitor	Clears the flow monitor.
debug flow monitor	Enables debugging output for flow monitors.

flow platform

To configure Flexible NetFlow platform parameters, use the **flowplatform** command in global configuration mode. To unconfigure Flexible NetFlow platform parameters, use the **no** form of this command.

flow platform cache timeout {**active** *seconds* | **fast** {**threshold** *count*} {**time** *seconds*} | **inactive** *seconds*}

no flow platform cache timeout {**active** | **fast** | **inactive**}

Syntax Description

cache timeout	Configures platform flow cache timeout parameters.
active <i>seconds</i>	Configures the active flow timeout, in seconds.
fast threshold <i>count</i>	Configures the fast aging threshold packet count.
fast time <i>seconds</i>	Configures the active flow timeout, in seconds.
inactive <i>seconds</i>	Configures the inactive flow timeout, in seconds.

Command Default

Flexible NetFlow platform parameters are not configured.

Command Modes

Global configuration (config)

Command History

Release	Modification
12.2(50)SY	This command was introduced.

Usage Guidelines

Hardware Flexible NetFlow table space is a valuable resource and needs to be managed. Older flows need to be identified as quickly as possible and aged out (purged) to make way ultimately for new, more active flows. The older the Flexible NetFlow data, the less it is useful for real-time monitoring of traffic.

The common aging schemes are:

- Inactive/normal aging: age out flows that have had no activity in the preceding configured time.
- Active/long aging: age out flows that have lived for longer than the configured long aging period.
- Fast aging: age out flows that had some bursty activity followed by inactivity, for example, Domain Name Service (DNS) resolution requests. This aging scheme is a function of the creation time of a flow and the packet count.
- TCP session aging: age out flows pertaining to terminated TCP sessions.
- Aggressive aging: age out flows with user-configured aggressive aging inactivity timeout when table space utilization exceeds a user-configured threshold.

In addition to purging older entries, NetFlow entries need to be purged in response to certain configuration and network topology changes; for example, interface or link going out of service.

Examples

The following example configures the active platform flow cache timeout:

```
Router(config)# flow platform cache timeout active 60
```

Related Commands

Command	Description
show platform flow	Displays Flexible NetFlow platform parameter information.

flow record

To create a Flexible NetFlow flow record, or to modify an existing Flexible NetFlow flow record, and enter Flexible NetFlow flow record configuration mode, use the **flow record** command in global configuration mode. To remove a Flexible NetFlow flow record, use the **no** form of this command.

flow record *record-name*

no flow record *record-name*

Syntax Description

<i>record-name</i>	Name of the flow record that is being created or modified.
--------------------	--

Command Default

A Flexible NetFlow flow record is not configured.

Command Modes

Global configuration (config)

Command History

Release	Modification
12.4(9)T	This command was introduced.
12.2(31)SB2	This command was integrated into Cisco IOS Release 12.2(31)SB2.
12.0(33)S	This command was modified. Support for this command was implemented on the Cisco 12000 series routers.
12.2(33)SRC	This command was modified. Support for this command was implemented on the Cisco 7200 series routers.
12.2(33)SRE	This command was modified. Support for this command was implemented on the Cisco 7300 Network Processing Engine (NPE) series routers.
15.1(2)S	This command was modified. A hash collision between the name supplied and any existing name is now possible. If this happens, you can retry, supplying another name
12.2(50)SY	This command was integrated into Cisco IOS Release 12.2(50)SY.
Cisco IOS XE Release 3.2SE	This command was integrated into Cisco IOS XE Release 3.2SE.

Usage Guidelines

Flexible NetFlow uses key and nonkey fields just as original NetFlow does to create and populate flows in a cache. In Flexible NetFlow a combination of key and nonkey fields is called a *record*. Original NetFlow and Flexible NetFlow both use the values in key fields in IP datagrams, such as the IP source or destination address and the source or destination transport protocol port, as the criteria for determining when a new flow must be created in the cache while network traffic is being monitored. A *flow* is defined as a stream of packets between a given source and a given destination. New flows are created whenever a packet that has a unique value in one of the key fields is analyzed.

In Cisco IOS Release 15.1(2)S and later releases, a hash collision between the name supplied and any existing name is possible. If this happens, you can retry, supplying another name.

Examples

The following example creates a flow record named FLOW-RECORD-1, and enters Flexible NetFlow flow record configuration mode:

```
Router(config)# flow record FLOW-RECORD-1
Router(config-flow-record)#
```

The following example shows the output when there is a hash collision between the name supplied and any existing name:

```
Router(config)# flow record FLOW-RECORD-1
% Flow Record: Failure creating new Flow Record (Hash value in use).
```

Related Commands

Command	Description
show flow record	Displays flow record status and statistics.

granularity

To configure the granularity of sampling for a Flexible NetFlow sampler, use the **granularity** command in Flexible NetFlow sampler configuration mode. To return the sampling configuration to the default value, use the **no** form of this command.

```
granularity {connection | packet}
no granularity
```

Syntax Description

connection	Specifies that the sampling is done by connection.
packet	Specifies that the sampling is done by packet.

Command Default

Sampling is done by packet.

Command Modes

Flexible NetFlow sampler configuration (config-sampler)

Command History

Release	Modification
Cisco IOS XE Release 3.4S	This command was introduced.

Examples

The following example configures the granularity of the sampling to be by connection for a Flexible NetFlow sampler:

```
Router(config)# sampler SAMPLER-2
Router(config-sampler)# granularity connection
Router(config-sampler)# mode random 1 out-of 20
```

Related Commands

Command	Description
sampler	Configures a Flexible NetFlow sampler.

ip flow monitor

To enable a Flexible NetFlow flow monitor for IPv4 traffic that the router is receiving or forwarding, use the **ip flow monitor** command in interface configuration mode or subinterface configuration mode. To disable a Flexible NetFlow flow monitor, use the **no** form of this command.

```
ip flow monitor monitor-name [sampler sampler-name] [{multicast | unicast}] {input | output}
no ip flow monitor monitor-name [sampler sampler-name] [{multicast | unicast}] {input | output}
```

Cisco Catalyst 6500 Switches in Cisco IOS Release 12.2(50)SY

```
ip flow monitor monitor-name [sampler sampler-name] [{layer2-switched | multicast | unicast}]
{input | output}
no ip flow monitor monitor-name [sampler sampler-name] [{layer2-switched | multicast | unicast}]
{input | output}
```

Cisco IOS XE Release 3.2SE

```
ip flow monitor monitor-name [sampler sampler-name] {input | output}
no ip flow monitor monitor-name [sampler sampler-name] {input | output}
```

Syntax Description

<i>monitor-name</i>	Name of a flow monitor that was previously configured.
sampler <i>sampler-name</i>	(Optional) Enables a flow sampler for this flow monitor using the name of a sampler that was previously configured.
layer2-switched	(Optional) Applies the flow monitor for Layer 2-switched traffic only.
multicast	(Optional) Applies the flow monitor for multicast traffic only.
unicast	(Optional) Applies the flow monitor for unicast traffic only.
input	Monitors traffic that the router is receiving on the interface.
output	Monitors traffic that the router is transmitting on the interface.

Command Default

A flow monitor is not enabled.

Command Modes

Interface configuration (config-if)
Subinterface configuration (config-subif)

Command History

Release	Modification
12.4(9)T	This command was introduced.
12.2(31)SB2	This command was integrated into Cisco IOS Release 12.2(31)SB2.
12.0(33)S	This command was modified. Support for this command was implemented on the Cisco 12000 series routers.

Release	Modification
12.2(33)SRC	This command was modified. Support for this command was implemented on the Cisco 7200 series routers.
12.4(22)T	This command was modified. The unicast and multicast keywords were added.
12.2(33)SRE	This command was modified. Support for this command was implemented on the Cisco 7300 Network Processing Engine (NPE) series routers.
12.2(50)SY	This command was modified. The layer2-switched keyword was added.
Cisco IOS XE Release 3.2SE	This command was integrated into Cisco IOS XE Release 3.2SE without the support for the multicast and unicast keywords.

Usage Guidelines

You must have already created a flow monitor by using the **flow monitor** command before you can apply the flow monitor to an interface with the **ip flow monitor** command to enable traffic monitoring with Flexible NetFlow.

ip flow monitor sampler

When a sampler is added to a flow monitor, only packets that are selected by the named sampler will be entered into the cache to form flows. Each use of a sampler causes separate statistics to be stored for that usage.

You cannot add a sampler to a flow monitor after the flow monitor has been enabled on an interface. You must remove the flow monitor from the interface prior to enabling the same flow monitor with a sampler. See the “Examples” section for more information.



Note

The statistics for each flow must be scaled to give the expected true usage. For example, with a 1 in 10 sampler it is expected that the packet and byte counters will have to be multiplied by 10.

Multicast Traffic and Unicast Traffic

In Cisco IOS Release 12.4(22)T and later releases, the default behavior of the **ip flow monitor** command is to analyze unicast *and* multicast traffic. If you need to monitor only unicast traffic, use the **unicast** keyword. If you need to monitor only multicast traffic, use the **multicast** keyword.

Examples

The following example enables a flow monitor for monitoring input traffic:

```
Router(config)# interface ethernet0/0
Router(config-if)# ip flow monitor FLOW-MONITOR-1 input
```

The following example enables a flow monitor for monitoring output traffic on a subinterface:

```
Router(config)# interface ethernet0/0.1
Router(config-if)# ip flow monitor FLOW-MONITOR-1 output
```

The following example enables a flow monitor for monitoring only multicast input traffic:


```
Router(config)# interface ethernet0/0
Router(config-if)# ip flow monitor FLOW-MONITOR-1 multicast input
```

The following example enables a flow monitor for monitoring only unicast output traffic:

```
Router(config)# interface ethernet0/0
Router(config-if)# ip flow monitor FLOW-MONITOR-1 unicast output
```

The following example enables the same flow monitor on the same interface for monitoring input and output traffic:

```
Router(config)# interface ethernet0/0
Router(config-if)# ip flow monitor FLOW-MONITOR-1 input
Router(config-if)# ip flow monitor FLOW-MONITOR-1 output
```

The following example enables two different flow monitors on the same interface for monitoring input and output traffic:

```
Router(config)# interface ethernet0/0
Router(config-if)# ip flow monitor FLOW-MONITOR-1 input
Router(config-if)# ip flow monitor FLOW-MONITOR-2 output
```

The following example enables the same flow monitor on two different interfaces for monitoring input and output traffic:

```
Router(config)# interface ethernet0/0
Router(config-if)# ip flow monitor FLOW-MONITOR-1 input
Router(config-if)# exit
Router(config)# interface ethernet1/0
Router(config-if)# ip flow monitor FLOW-MONITOR-1 output
```

The following example enables two different flow monitors on two different interfaces for monitoring input and output traffic:

```
Router(config)# interface ethernet0/0
Router(config-if)# ip flow monitor FLOW-MONITOR-1 input
Router(config-if)# exit
Router(config)# interface ethernet1/0
Router(config-if)# ip flow monitor FLOW-MONITOR-2 output
```

The following example enables a flow monitor for monitoring input traffic, with a sampler to limit the input packets that are sampled:

```
Router(config)# interface ethernet0/0
Router(config-if)# ip flow monitor FLOW-MONITOR-1 sampler SAMPLER-1 input
```

The following example enables a flow monitor for monitoring output traffic, with a sampler to limit the output packets that are sampled:

```
Router(config)# interface ethernet0/0
Router(config-if)# ip flow monitor FLOW-MONITOR-1 sampler SAMPLER-1 output
```

The following example enables two different flow monitors for monitoring input and output traffic, with a sampler on the flow monitor that is monitoring input traffic to limit the input packets that are sampled:

```
Router(config)# interface ethernet0/0
Router(config-if)# ip flow monitor FLOW-MONITOR-1 sampler SAMPLER-1 input
Router(config-if)# ip flow monitor FLOW-MONITOR-2 output
```

The following example enables two different flow monitors for monitoring input and output traffic, with a sampler on the flow monitor that is monitoring output traffic to limit the output packets that are sampled:

```
Router(config)# interface ethernet0/0
Router(config-if)# ip flow monitor FLOW-MONITOR-2 input
Router(config-if)# ip flow monitor FLOW-MONITOR-2 sampler SAMPLER-2 output
```

The following example shows what happens when you try to add a sampler to a flow monitor that has already been enabled on an interface without a sampler:

```
Router(config)# interface Ethernet0/0
Router(config-if)# ip flow monitor FLOW-MONITOR-1 sampler SAMPLER-2 input
% Flow Monitor: Flow Monitor 'FLOW-MONITOR-1' is already on in full mode and cannot be
enabled with a sampler.
```

The following example shows how to remove a flow monitor from an interface so that it can be enabled with the sampler:

```
Router(config)# interface Ethernet0/0
Router(config-if)# no ip flow monitor FLOW-MONITOR-1 input
Router(config-if)# ip flow monitor FLOW-MONITOR-1 sampler SAMPLER-2 input
```

The following example shows what happens when you try to remove a sampler from a flow monitor on an interface by entering the **flow monitor** command again without the **sampler** keyword and argument:

```
Router(config)# interface Ethernet0/0
Router(config-if)# ip flow monitor FLOW-MONITOR-1 input
% Flow Monitor: Flow Monitor 'FLOW-MONITOR-1' is already on in sampled mode and cannot be
enabled in full mode.
```

The following example shows how to remove the flow monitor that was enabled with a sampler from the interface so that it can be enabled without the sampler:

```
Router(config)# interface Ethernet0/0
Router(config-if)# no ip flow monitor FLOW-MONITOR-1 sampler SAMPLER-2 input
Router(config-if)# ip flow monitor FLOW-MONITOR-1 input
```

Related Commands

Command	Description
flow monitor	Creates a flow monitor.
sampler	Creates a flow sampler.

ipv6 flow monitor

To enable a Flexible NetFlow flow monitor for IPv6 traffic that the router is receiving or forwarding, use the **ipv6 flow monitor** command in interface configuration mode or subinterface configuration mode. To disable a Flexible NetFlow flow monitor, use the **no** form of this command.

```
ipv6 flow monitor monitor-name [sampler sampler-name] [{multicast | unicast}] {input | output}
no ipv6 flow monitor monitor-name [sampler sampler-name] [{layer2-bridged}] [{multicast | unicast}] {input | output}
```

Cisco Catalyst 6500 Switches in Cisco IOS Release 12.2(50)SY

```
ipv6 flow monitor monitor-name [sampler sampler-name] unicast {input | output}
no ipv6 flow monitor monitor-name [sampler sampler-name] [{layer2-bridged}] unicast {input | output}
```

Cisco IOS XE Release 3.2SE

```
ipv6 flow monitor monitor-name [sampler sampler-name] {input | output}
no ipv6 flow monitor monitor-name [sampler sampler-name] [{layer2-bridged}] {input | output}
```

Syntax Description

<i>monitor-name</i>	Name of a flow monitor that was previously configured.
sampler <i>sampler-name</i>	(Optional) Enables a flow sampler for this flow monitor using the name of a sampler that was previously configured.
multicast	(Optional) Applies the flow monitor for multicast traffic only.
unicast	(Optional) Applies the flow monitor for unicast traffic only.
input	Monitors traffic that the router is receiving on the interface.
output	Monitors traffic that the router is transmitting on the interface.
layer2-bridged	Monitors IPv6 Layer 2 Bridged traffic that the router is transmitting on the interface.

Command Default

A flow monitor is not enabled.

Command Modes

Interface configuration (config-if)
Subinterface configuration (config-subif)

Command History

Release	Modification
12.4(20)T	This command was introduced.
12.4(22)T	This command was modified. The unicast and multicast keywords were added.

Release	Modification
12.2(33)SRE	This command was modified. Support for this command was implemented on the Cisco 7200 and Cisco 7300 Network Processing Engine (NPE) series routers.
12.2(50)SY	This command was modified. The multicast keyword was not supported.
15.1(1)SY	This command was modified. The layer2-bridged keyword was added.
Cisco IOS XE Release 3.2SE	This command was integrated into Cisco IOS XE Release 3.2SE without the support for the multicast and unicast keywords.

Usage Guidelines

You must have already created a flow monitor by using the **flow monitor** command before you can apply the flow monitor to an interface with the **ipv6 flow monitor** command to enable traffic monitoring with Flexible NetFlow.

ipv6 flow monitor sampler

When a sampler is added to a flow monitor, only packets that are selected by the named sampler will be entered into the cache to form flows. Each use of a sampler causes separate statistics to be stored for that usage.

You cannot add a sampler to a flow monitor after the flow monitor has been enabled on an interface. You must remove the flow monitor from the interface prior to enabling the same flow monitor with a sampler. See the “Examples” section for more information.



Note The statistics for each flow must be scaled to give the expected true usage. For example, with a 1 in 10 sampler it is expected that the packet and byte counters will have to be multiplied by 10.

Multicast Traffic and Unicast Traffic

In Cisco IOS Release 12.4(22)T and later releases, the default behavior of the **ip flow monitor** command is to analyze unicast *and* multicast traffic. If you need to monitor only unicast traffic, use the **unicast** keyword. If you need to monitor only multicast traffic, use the **multicast** keyword.

Examples

The following example enables a flow monitor for monitoring input IPv6 traffic:

```
Router(config)# interface ethernet0/0
Router(config-if)# ipv6 flow monitor FLOW-MONITOR-1 input
```

The following example enables a flow monitor for monitoring output IPv6 traffic on a subinterface:

```
Router(config)# interface ethernet0/0.1
Router(config-if)# ipv6 flow monitor FLOW-MONITOR-1 output
```

The following example enables a flow monitor for monitoring only multicast input traffic:

```
Router(config)# interface ethernet0/0
Router(config-if)# ipv6 flow monitor FLOW-MONITOR-1 multicast input
```

The following example enables a flow monitor for monitoring only unicast output traffic:

```
Router(config)# interface ethernet0/0
Router(config-if)# ipv6 flow monitor FLOW-MONITOR-1 unicast output
```

The following example enables the same flow monitor on the same interface for monitoring input and output IPv6 traffic:

```
Router(config)# interface ethernet0/0
Router(config-if)# ipv6 flow monitor FLOW-MONITOR-1 input
Router(config-if)# ipv6 flow monitor FLOW-MONITOR-1 output
```

The following example enables two different flow monitors on the same interface for monitoring input and output IPv6 traffic:

```
Router(config)# interface ethernet0/0
Router(config-if)# ipv6 flow monitor FLOW-MONITOR-1 input
Router(config-if)# ipv6 flow monitor FLOW-MONITOR-2 output
```

The following example enables the same flow monitor on two different interfaces for monitoring input and output IPv6 traffic:

```
Router(config)# interface ethernet0/0
Router(config-if)# ipv6 flow monitor FLOW-MONITOR-1 input
Router(config-if)# exit
Router(config)# interface ethernet1/0
Router(config-if)# ipv6 flow monitor FLOW-MONITOR-1 output
```

The following example enables two different flow monitors on two different interfaces for monitoring input and output IPv6 traffic:

```
Router(config)# interface ethernet0/0
Router(config-if)# ipv6 flow monitor FLOW-MONITOR-1 input
Router(config-if)# exit
Router(config)# interface ethernet1/0
Router(config-if)# ipv6 flow monitor FLOW-MONITOR-2 output
```

The following example enables a flow monitor for monitoring input IPv6 traffic, with a sampler to limit the input packets that are sampled:

```
Router(config)# interface ethernet0/0
Router(config-if)# ipv6 flow monitor FLOW-MONITOR-1 sampler SAMPLER-1 input
```

The following example enables a flow monitor for monitoring output IPv6 traffic, with a sampler to limit the output packets that are sampled:

```
Router(config)# interface ethernet0/0
Router(config-if)# ipv6 flow monitor FLOW-MONITOR-1 sampler SAMPLER-1 output
```

The following example enables two different flow monitors for monitoring input and output IPv6 traffic, with a sampler on the flow monitor that is monitoring input IPv6 traffic to limit the input packets that are sampled:

```
Router(config)# interface ethernet0/0
Router(config-if)# ipv6 flow monitor FLOW-MONITOR-1 sampler SAMPLER-1 input
Router(config-if)# ipv6 flow monitor FLOW-MONITOR-2 output
```

The following example enables two different flow monitors for monitoring input and output IPv6 traffic, with a sampler on the flow monitor that is monitoring output IPv6 traffic to limit the output packets that are sampled:

```
Router(config)# interface ethernet0/0
Router(config-if)# ipv6 flow monitor FLOW-MONITOR-2 input
Router(config-if)# ipv6 flow monitor FLOW-MONITOR-2 sampler SAMPLER-2 output
```

The following example shows what happens when you try to add a sampler to a flow monitor that has already been enabled on an interface without a sampler:

```
Router(config)# interface Ethernet0/0
Router(config-if)# ipv6 flow monitor FLOW-MONITOR-1 sampler SAMPLER-2 input
% Flow Monitor: Flow Monitor 'FLOW-MONITOR-1' is already on in full mode and cannot be
enabled with a sampler.
```

The following example shows how to remove a flow monitor from an interface so that it can be enabled with the sampler:

```
Router(config)# interface Ethernet0/0
Router(config-if)# no ipv6 flow monitor FLOW-MONITOR-1 input
Router(config-if)# ipv6 flow monitor FLOW-MONITOR-1 sampler SAMPLER-2 input
```

The following example shows what happens when you try to remove a sampler from a flow monitor on an interface by entering the **flow monitor** command again without the **sampler** keyword and argument:

```
Router(config)# interface Ethernet 0/0
Router(config-if)# ipv6 flow monitor FLOW-MONITOR-1 input
% Flow Monitor: Flow Monitor 'FLOW-MONITOR-1' is already on in sampled mode and cannot be
enabled in full mode.
```

The following example shows how to remove the flow monitor that was enabled with a sampler from the interface so that it can be enabled without the sampler:

```
Router(config)# interface Ethernet 0/0
Router(config-if)# no ipv6 flow monitor FLOW-MONITOR-1 sampler SAMPLER-2 input
Router(config-if)# ipv6 flow monitor FLOW-MONITOR-1 input
```

Related Commands

Command	Description
flow monitor	Creates a flow monitor.
sampler	Creates a flow sampler.

match application name

To configure the use of the application name as a key field for a flow record, use the **match application name** command in flow record configuration mode. To disable the use of the application name as a key field for a flow record, use the **no** form of this command.

match application name
no match application name

Syntax Description	This command has no arguments or keywords.
Command Default	The application name is not configured as a key field.
Command Modes	Flow record configuration (config-flow-record)

Command History	Release	Modification
	15.0(1)M	This command was introduced.
	15.2(2)T	This command was integrated into Cisco IOS Release 15.2(2)T for Cisco Performance Monitor.
	Cisco IOS XE Release 3.5S	This command was integrated into Cisco IOS XE Release 3.5S for Cisco Performance Monitor.

Usage Guidelines This command can be used with both Flexible NetFlow and Performance Monitor. These products use different commands to enter the configuration mode in which you issue this command, however the mode prompt is the same for both products. For Performance Monitor, you must first enter the **flow record type performance-monitor** command before you can use this command.

Because the mode prompt is the same for both products, here we refer to the command mode for both products as flow record configuration mode. However, for Flexible NetFlow, the mode is also known as Flexible NetFlow flow record configuration mode; and for Performance Monitor, the mode is also known as Performance Monitor flow record configuration mode.

A flow record requires at least one key field before it can be used in a flow monitor. The key fields differentiate flows, with each flow having a unique set of values for the key fields. The key fields are defined using the **match** command.

Examples

The following example configures the application name as a key field:

```
Router(config)# flow record FLOW-RECORD-1
Router(config-flow-record)# match application name
```

Cisco Performance Monitor in Cisco IOS Release 15.2(2)T and XE 3.5S

The following example configures the application name as a key field:

```
Router(config)# flow record type performance-monitor RECORD-1
Router(config-flow-record)# match application name
```

Related Commands

Command	Description
collect application name	Configures the use of application name as a nonkey field for a Flexible NetFlow flow record.
flow record	Creates a flow record, and enters Flexible NetFlow flow record configuration mode.
flow record type performance-monitor	Creates a flow record, and enters Performance Monitor flow record configuration mode.

match connection id

To configure the connection ID as a key field for a flow record, use the **match connection id** command in flow record configuration mode. To disable the use of a connection ID field as a key field for a flow record, use the **no** form of this command.

match connection id
no match connection id

Syntax Description This command has no arguments or keywords.

Command Default The use of the connection ID as a key field for a user-defined flow record is not enabled.

Command Modes flow record configuration (config-flow-record)

Release	Modification
Cisco IOS Release XE 3.9S	This command was introduced.

Usage Guidelines A flow record requires at least one key field before it can be used in a flow monitor. The key fields differentiate flows, with each flow having a unique set of values for the key fields. The key fields are defined using the **match** command.

Examples The following example configures the connection ID as a key field:

```
Router(config)# flow record RECORD-4
Router(config-flow-record)# match connection id
```

Command	Description
flow record	Creates a flow record, and enters Flexible NetFlow flow record configuration mode.

match connection transaction-id

To configure the transaction ID as a key field for a flow record, use the **match connection transaction-id** command in flow record configuration mode. To disable the use of a transaction ID field as a key field for a flow record, use the **no** form of this command.

match connection transaction-id
no match connection transaction-id

Syntax Description This command has no arguments or keywords.

Command Default The use of the transaction ID as a key field for a user-defined flow record is not enabled.

Command Modes Flow record configuration (config-flow-record)

Command History

Release	Modification
Cisco IOS XE 3.4S	This command was introduced.
Cisco IOS XE Release 3.5S	This command was integrated into Cisco IOS XE Release 3.5S for Cisco Performance Monitor.

Usage Guidelines

This command can be used with both Flexible NetFlow and Performance Monitor. These products use different commands to enter the configuration mode in which you issue this command, however the mode prompt is the same for both products. For Performance Monitor, you must first enter the **flow record type performance-monitor** command before you can use this command.

Because the mode prompt is the same for both products, here we refer to the command mode for both products as flow record configuration mode. However, for Flexible NetFlow, the mode is also known as Flexible NetFlow flow record configuration mode; and for Performance Monitor, the mode is also known as Performance Monitor flow record configuration mode.

The transaction ID identifies a transaction within a connection. A transaction is a meaningful exchange of application data between two network devices or a client and server. A transaction ID is assigned the first time a flow is reported, so that later reports for the same flow will have the same transaction ID. A different transaction ID is used for each transaction within a TCP or UDP connection. The identifiers are not required to be sequential.

A flow record requires at least one key field before it can be used in a flow monitor. The key fields differentiate flows, with each flow having a unique set of values for the key fields. The key fields are defined using the **match** command.

The transaction ID field is used to specify the transaction within the connection, for protocols where multiple transactions are used. The field is composed of the CFT-flow ID/pointer (the most significant bit) and the transaction counter within the connection specified by NBAR (least significant bit).

Examples

The following example configures the transaction ID as a key field:

```
Router(config)# flow record RECORD-4
Router(config-flow-record)# match connection transaction-id
```

Cisco Performance Monitor in Cisco IOS XE Release 3.5S

The following example configures the transaction ID as a key field:

```
Router(config)# flow record type performance-monitor RECORD-1
Router(config-flow-record)# match connection transaction-id
```

Related Commands

Command	Description
flow record	Creates a flow record, and enters Flexible NetFlow flow record configuration mode.
flow record type performance-monitor	Creates a flow record, and enters Performance Monitor flow record configuration mode.

match datalink dot1q priority

To configure the 802.1Q (dot1q) priority as a key field for a Flexible NetFlow flow record, use the **match datalink dot1q priority** command in Flexible NetFlow flow record configuration mode. To disable the use of the 802.1Q priority as a key field for a Flexible NetFlow flow record, use the **no** form of this command.

match datalink dot1q priority
no match datalink dot1q priority

Command Default

The 802.1Q priority is not configured as a key field.

Command Modes

Flexible NetFlow flow record configuration (config-flow-record)

Command History

Release	Modification
Cisco IOS XE Release 3.2SE	This command was introduced. Only the switch ports support it.

Usage Guidelines

The Flexible NetFlow **match** commands are used to configure key fields for the flow monitor record and to enable capturing the values in the fields for the flow created with the record.

Example

The following example configures the 802.1Q priority of traffic being received by the router as a key field for a Flexible NetFlow flow record

```
Router(config)# flow record FLOW-RECORD-1
Router(config-flow-record)# match datalink dot1q priority
```

Related Commands

Command	Description
flow record	Creates a flow record.

match datalink dot1q vlan

To configure the 802.1Q (dot1q) VLAN value as a key field for a Flexible NetFlow flow record, use the **match datalink dot1q vlan** command in Flexible NetFlow flow record configuration mode. To disable the use of the 802.1Q VLAN value as a key field for a Flexible NetFlow flow record, use the **no** form of this command.

```
match datalink dot1q vlan {input | output}
no match datalink dot1q vlan {input | output}
```

Syntax Description

input	Configures the 802.1Q VLAN ID of traffic being received by the router as a key field.
output	Configures the 802.1Q VLAN ID of traffic being transmitted by the router as a key field.

Command Default

The 802.1Q VLAN ID is not configured as a key field.

Command Modes

Flexible NetFlow flow record configuration (config-flow-record)

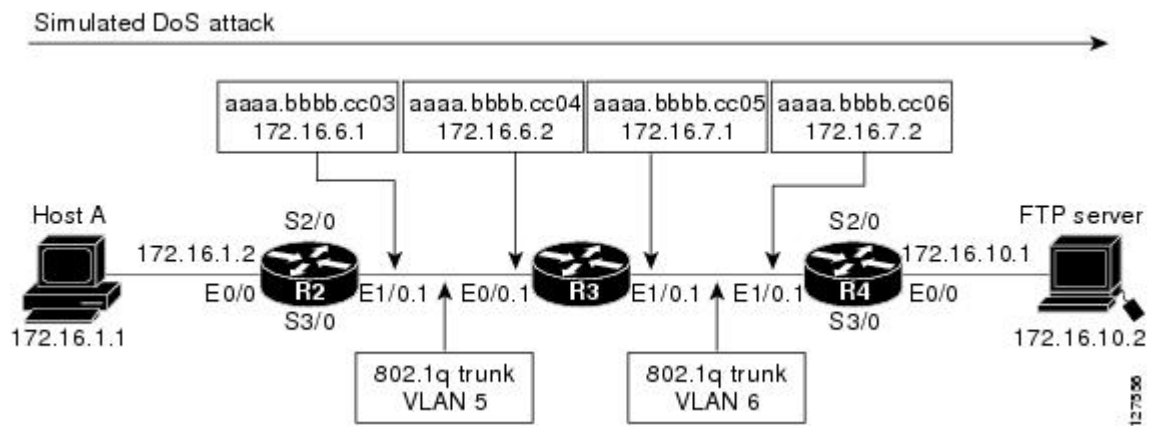
Command History

Release	Modification
12.4(22)T	This command was introduced.
12.2(33)SRE	This command was modified. Support for this command was implemented on the Cisco 7200 and Cisco 7300 Network Processing Engine (NPE) series routers.
Cisco IOS XE Release 3.2SE	This command was integrated into Cisco IOS XE Release 3.2SE. Only the switch ports support it.

Usage Guidelines

The **input** and **output** keywords of the **match datalink dot1q vlan** command are used to specify the observation point that is used by the **match datalink dot1q vlan** command to create flows based on the unique 802.1q VLAN IDs in the network traffic. For example, when you configure a flow record with the **match datalink dot1q vlan input** command to monitor the simulated denial of service (DoS) attack in the figure below and apply the flow monitor to which the flow record is assigned in either input (ingress) mode on Ethernet interface 0/0.1 on R3 or output (egress) mode on Ethernet interface 1/0.1 on R3, the observation point is always Ethernet 0/0.1 on R3. The 802.1q VLAN ID that is used as a key field is 5.

Figure 27: Simulated DoS Attack (c)



The observation point of **match** commands that do not have the input and/or output keywords is always the interface to which the flow monitor that contains the flow record with the **match** commands is applied.

Examples

The following example configures the 802.1Q VLAN ID of traffic being received by the router as a key field for a Flexible NetFlow flow record

```
Router(config)# flow record FLOW-RECORD-1
Router(config-flow-record)# match datalink dot1q vlan input
```

Related Commands

Command	Description
flow record	Creates a flow record.

match datalink ethertype

To configure the ethertype as a key field for a Flexible NetFlow flow record, use the **match datalink ethertype** command in Flexible NetFlow flow record configuration mode. To disable the use of the ethertype as a key field for a Flexible NetFlow flow record, use the **no** form of this command.

match datalink ethertype
no match datalink ethertype

Command Default The ethertype is not configured as a key field.

Command Modes Flexible NetFlow flow record configuration (config-flow-record)

Command History	Release	Modification
	Cisco IOS XE Release 3.2SE	This command was introduced.

Usage Guidelines The Flexible NetFlow **match** commands are used to configure key fields for the flow monitor record and to enable capturing the values in the fields for the flow created with the record.

Example

The following example configures the ethertype of traffic being received by the router as a key field for a Flexible NetFlow flow record

```
Router(config)# flow record FLOW-RECORD-1
Router(config-flow-record)# match datalink ethertype
```

Related Commands	Command	Description
	flow record	Creates a flow record.

match datalink mac

To configure the use of MAC addresses as a key field for a Flexible NetFlow flow record, use the **match datalink mac** command in Flexible NetFlow flow record configuration mode. To disable the use of MAC addresses as a key field for a Flexible NetFlow flow record, use the **no** form of this command.

```
match datalink mac {destination | source} address {input | output}
no match datalink mac {destination | source} address {input | output}
```

Syntax Description

destination address	Configures the use of the destination MAC address as a key field.
source address	Configures the use of the source MAC address as a key field.
input	Packets received by the router.
output	Packets transmitted by the router.

Command Default

MAC addresses are not configured as a key field.

Command Modes

Flexible NetFlow flow record configuration (config-flow-record)

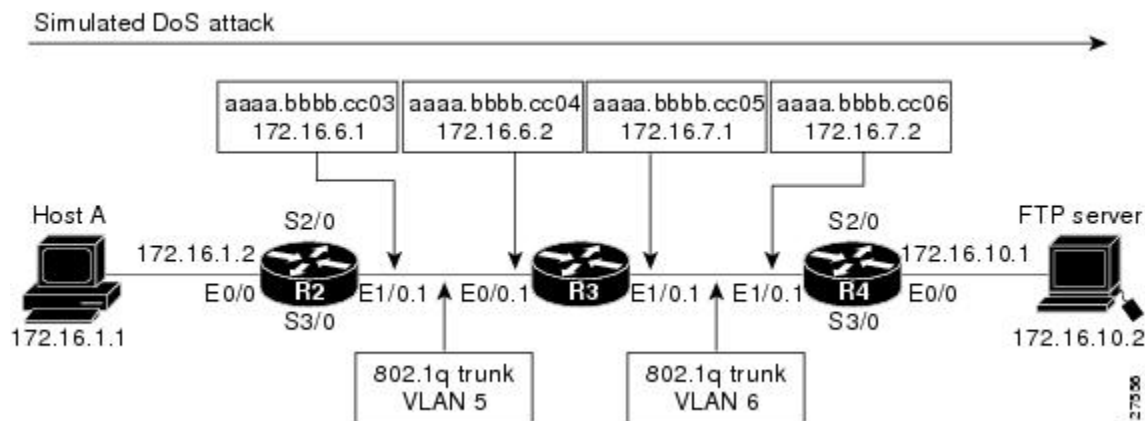
Command History

Release	Modification
12.4(22)T	This command was introduced.
12.2(33)SRE	This command was modified. Support for this command was implemented on the Cisco 7200 and Cisco 7300 Network Processing Engine (NPE) series routers.
Cisco IOS XE Release 3.2SE	This command was integrated into Cisco IOS XE Release 3.2SE.

Usage Guidelines

The **input** and **output** keywords of the **match datalink mac** command are used to specify the observation point that is used by the **match datalink mac** command to create flows based on the unique MAC addresses in the network traffic. For example, when you configure a flow record with the **match datalink mac destination address input** command to monitor the simulated denial of service (DoS) attack in the figure below and apply the flow monitor to which the flow record is assigned in either input (ingress) mode on Ethernet interface 0/0.1 on R3 or output (egress) mode on Ethernet interface 1/0.1 on R3, the observation point is always Ethernet 0/0.1 on R3. The destination MAC address that is used a key field is aaaa.bbbb.cc04.

Figure 28: Simulated DoS Attack (d)



When the destination output mac address is configured, the value is the destination mac address of the output packet, even if the monitor the flow record is applied to is input only.

When the destination input mac address is configured, the value is the destination mac address of the input packet, even if the monitor the flow record is applied to is output only.

When the source output mac address is configured, the value is the source mac address of the output packet, even if the monitor the flow record is applied to is input only.

When the source input mac address is configured, the value is the source mac address of the input packet, even if the monitor the flow record is applied to is output only.

Examples

The following example configures the use of the destination MAC address of packets that are received by the router as a key field for a Flexible NetFlow flow record:

```
Router(config)# flow record FLOW-RECORD-1
Router(config-flow-record)# match datalink mac destination address input
```

The following example configures the use of the source MAC addresses of packets that are transmitted by the router as a key field for a Flexible NetFlow flow record:

```
Router(config)# flow record FLOW-RECORD-1
Router(config-flow-record)# match datalink mac source address output
```

Related Commands

Command	Description
flow record	Creates a flow record.

match datalink vlan

To configure the VLAN ID as a key field for a Flexible NetFlow flow record, use the **match datalink vlan** command in Flexible NetFlow flow record configuration mode. To disable the use of the VLAN ID value as a key field for a Flexible NetFlow flow record, use the **no** form of this command.

```
match datalink vlan {input | output}
no match datalink vlan {input | output}
```

Syntax Description

input	Configures the VLAN ID of traffic being received by the router as a key field.
output	Configures the VLAN ID of traffic being transmitted by the router as a key field.

Command Default

The VLAN ID is not configured as a key field.

Command Modes

Flexible NetFlow flow record configuration (config-flow-record)

Command History

Release	Modification
12.2(50)SY	This command was introduced.
Cisco IOS XE Release 3.2SE	This command was integrated into Cisco IOS XE Release 3.2SE. Only the switch ports support it.

Examples

The following example configures the VLAN ID of traffic being received by the router as a key field for a Flexible NetFlow flow record:

```
Router(config)# flow record FLOW-RECORD-1
Router(config-flow-record)# match datalink vlan input
```

Related Commands

Command	Description
flow record	Creates a flow record.

match flow

To configure the flow direction and the flow sampler ID number as key fields for a flow record, use the **match flow** command in Flexible NetFlow flow record configuration or policy inline configuration mode. To disable the use of the flow direction and the flow sampler ID number as key fields for a flow record, use the **no** form of this command.

```
match flow {direction | sampler}
no match flow {direction | sampler}
```

Cisco Catalyst 6500 Switches in Cisco IOS Release 12.2(50)SY and 15.1(1)SY

```
match flow {cts {destination | source} group-tag | direction}
no match flow {cts {destination | source} group-tag | direction}
```

Syntax Description

direction	Configures the direction in which the flow was monitored as a key field.
sampler	Configures the flow sampler ID as a key field.
cts destination group-tag	Configures the CTS destination field group as a key field.
cts source group-tag	Configures the CTS source field group as a key field.

Command Default

The CTS destination or source field group, flow direction and the flow sampler ID are not configured as key fields.

Command Modes

Flexible NetFlow flow record configuration (config-flow-record)
Policy inline configuration (config-if-spolicy-inline)

Command History

Release	Modification
12.4(9)T	This command was introduced.
12.2(31)SB2	This command was integrated into Cisco IOS Release 12.2(31)SB2.
12.0(33)S	This command was modified. Support for this command was implemented on the Cisco 12000 series routers.
12.2(33)SRC	This command was modified. Support for this command was implemented on the Cisco 7200 series routers.
12.2(33)SRE	This command was modified. Support for this command was implemented on the Cisco 7300 Network Processing Engine (NPE) series routers.
15.1(3)T	This command was integrated into Cisco IOS Release 15.1(3)T for Cisco Performance Monitor. Support was added for policy inline configuration mode.
12.2(58)SE	This command was modified. Support for the Cisco Performance Monitor was added.

Release	Modification
12.2(50)SY	This command was modified. The cts destination group-tag and cts source group-tag keywords were added. The sampler keyword was removed.
15.1(1)SY	This command was modified. Support for the Cisco Performance Monitor was added.
Cisco IOS XE Release 3.2SE	This command was integrated into Cisco IOS XE Release 3.2SE without the support for the sampler keyword.

Usage Guidelines

This command can be used with both Flexible NetFlow and Performance Monitor. These products use different commands to enter the configuration mode in which you issue this command.

A flow record requires at least one key field before it can be used in a flow monitor. The key fields differentiate flows, with each flow having a unique set of values for the key fields. The key fields are defined using the **match** command.

Cisco Performance Monitor in Cisco IOS Release 15.1(3)T and 12.2(58)SE

You must first enter the **service-policy type performance-monitor inline** command.

match flow direction

This field indicates the direction of the flow. This is of most use when a single flow monitor is configured for input and output flows. It can be used to find and eliminate flows that are being monitored twice, once on input and once on output. This field may also be used to match up pairs of flows in the exported data when the two flows are flowing in opposite directions.

match flow sampler

This field contains the ID of the flow sampler used to monitor the flow. This is useful when more than one flow sampler is being used with different sampling rates. The flow exporter **option sampler-table** command will export options records with mappings of the flow sampler ID to the sampling rate so the collector can calculate the scaled counters for each flow.

Examples

The following example configures the direction the flow was monitored in as a key field:

```
Router(config)# flow record FLOW-RECORD-1
Router(config-flow-record)# match flow direction
```

The following example configures the flow sampler ID as a key field:

```
Router(config)# flow record FLOW-RECORD-1
Router(config-flow-record)# match flow sampler
```

The following example configures the CTS destination fields group as a key field:

```
Router(config)# flow record FLOW-RECORD-1
Router(config-flow-record)# match flow cts destination group-tag
```

The following example configures the CTS source fields group as a key field:

```
Router(config)# flow record FLOW-RECORD-1
Router(config-flow-record)# match flow cts source group-tag
```

The following example shows how to use the policy inline configuration mode to configure a service policy for Performance Monitor. The policy specifies that packets traversing Ethernet interface 0/0 that match the flow sampler ID will be monitored based on the parameters specified in the flow monitor configuration named fm2:

```
Router(config)# interface ethernet 0/0
Router(config-if)# service-policy type performance-monitor inline input
Router(config-if-spolicy-inline)# match flow sampler
Router(config-if-spolicy-inline)# flow monitor fm-2
Router(config-if-spolicy-inline)# exit
```

Related Commands

Command	Description
class-map	Creates a class map to be used for matching packets to a specified class.
flow exporter	Creates a flow exporter.
flow record	Creates a flow record.
service-policy type performance-monitor	Associates a Performance Monitor policy with an interface.

