

# X.25 over TCP/IP

Document ID: 9363

## Contents

### Introduction

#### Prerequisites

- Requirements
- Components Used
- Conventions

#### Background Information

#### Configure

- Network Diagram
- Configurations

#### Verify

#### Troubleshoot

- Troubleshooting Commands

#### Related Information

## Introduction

This document provides a sample configuration for X25 Over TCP.

## Prerequisites

## Requirements

There are no specific requirements for this document.

## Components Used

The information in this document is based on the Cisco IOS® Software Release 9.21 or later, with any feature set.

**Note:** For Cisco IOS software versions earlier than 11.3, the format of the **x25 route ^xxxx xot a.b.c.d** command must be **x25 route ^xxxx ip a.b.c.d**.

The information in this document was created from the devices in a specific lab environment. All of the devices used in this document started with a cleared (default) configuration. If your network is live, make sure that you understand the potential impact of any command.

## Conventions

For more information on document conventions, refer to Cisco Technical Tips Conventions.

## Background Information

XOT is X25 Over TCP, Request For Comments (RFC) 1613. This allows X.25 packets to be sent over a Transmission Control Protocol/Internet Protocol (TCP/IP) network instead of a Link Access Procedure, Balanced (LAPB) link.

In essence, we tunnel x25 traffic through an IP cloud. For example, connecting two X.25 clouds that have no physical connection with a virtual TCP tunnel across the IP cloud.

When an incoming call is received that should be forwarded, two fields in the X.25 routing table are consulted to determine a remote X.25 route: the destination X.121 address and, optionally, the X.25 packet's Call User Data (CUD) field.

When the destination address and the CUD of the incoming packet fit the X.121 and CUD patterns in the routing table, the call is forwarded. You can also specify an XOT source that causes the XOT TCP connection to use the IP address of a specified interface as the source address of the TCP connection.

If, for instance, a loopback interface is specified for the XOT connection's source address, TCP can use a primary interface or any backup interface to reach the other end of the connection. However, if a physical interface's address is specified as the source address, the XOT connection is terminated if that interface goes down.

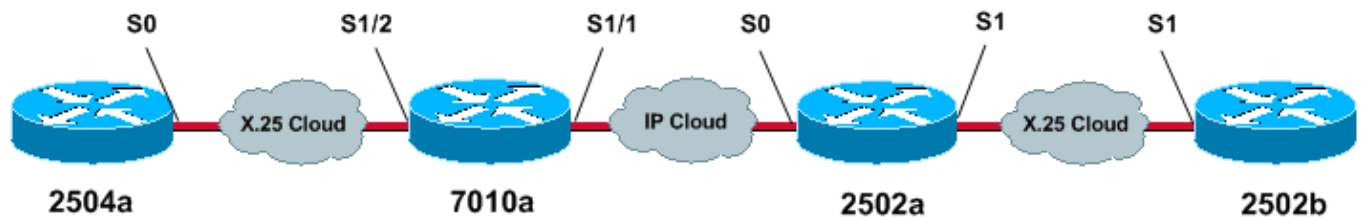
## Configure

In this section, you are presented with the information to configure the features described in this document.

**Note:** To find additional information on the commands used in this document, use the Command Lookup Tool (registered customers only) .

## Network Diagram

This document uses this network setup:



## Configurations

This document uses these configurations:

- 2504a
- 7010a
- 2502a
- 2502b

### 2504a

```
!
hostname 2504a
!
x25 routing
!
!
interface Serial0
```

```
ip address 1.1.1.2 255.255.255.0
encapsulation x25
no ip mroute-cache
x25 address 111
!
!
x25 route 222 interface Serial0

!--- local x25 switching

!
```

### 7010a

```
!
service tcp-keepalives-in
service tcp-keepalives-out

!--- these two commands will tear down the tcp connection if the x25 connection idles out
!--- or does not perform it clear call sequence appropriately.

!

hostname 7010a
!
x25 routing
!

!
interface Serial1/1
ip address 10.1.1.2 255.255.255.0
clockrate 2000000
!
interface Serial1/2
ip address 1.1.1.1 255.255.255.0
encapsulation x25 dce
no ip mroute-cache
clockrate 2000000
!
!
x25 route 111 interface Serial1/2

!--- local x25 switching

x25 route 222 ip 10.1.1.1

!--- sending x25 packet over the IP cloud

!
```

### 2502a

```
!
service tcp-keepalives-in
service tcp-keepalives-out

!--- these two commands will tear down the tcp connection if the x25 connection idles out
!--- or does not perform it clear call sequence appropriately.

!
hostname 2502a
!
!
x25 routing
!
```

```

interface Serial0
 ip address 10.1.1.1 255.255.255.0
 bandwidth 56
!
interface Serial1
 no ip address
 no ip mroute-cache
 encapsulation x25
 bandwidth 56
!
!
x25 route 111 ip 10.1.1.2

!--- sending x25 packet over the IP cloud

x25 route 222 interface Serial1

!--- local x25 switching

!

```

## 2502b

```

!
hostname 2502b
!
x25 routing
!
interface Serial1
 ip address 172.16.20.1 255.255.255.0
 encapsulation x25 dce
 no ip mroute-cache
 bandwidth 56
 x25 address 222
 clockrate 56000
!
!
x25 route 111 interface Serial1

!--- local x25 switching

!

```

## Verify

This section provides information you can use to confirm your configuration is working properly.

Certain **show** commands are supported by the Output Interpreter Tool (registered customers only) , which allows you to view an analysis of **show** command output.

- **show x25 vc** displays information about active switched virtual circuits (SVCs) and permanent virtual circuits (PVCs), in privileged EXEC mode.

You can see the SVCs that are created from the output of the **show x25 vc** command:

### Show Command for 2504a

```

2504a#show x25 vc
SVC 1, State D1, Interface Serial0
  Started 000011, last input 000000, output 000000
  Line 2 vty 0 Location Host 222

```

```
222 connected to 111 PAD <--> X25
Window size input 2, output 2
Packet size input 128, output 128
PS 5 PR 2 ACK 2 Remote PR 3 RCNT 0 RNR no
Window is closed
P/D state timeouts 0 timer (secs) 0
data bytes 361/79 packets 21/26 Resets 0/0 RNRs 0/0 REJs 0/0 INTs 0/0
```

### Show Command for 7010a

```
7010a#show x25 vc
SVC 1024, State D1, Interface Serial1/2
Started 000430, last input 000410, output 000410
Connects 111 <--> 222 to
XOT between 10.1.1.2, 11011 and 10.1.1.1, 1998
Window size input 2, output 2
Packet size input 128, output 128
PS 1 PR 7 ACK 7 Remote PR 1 RCNT 0 RNR FALSE
Retransmits 0 Timer (secs) 0 Reassembly (bytes) 0
Held Fragments/Packets 0/0
Bytes 94/69 Packets 9/15 Resets 0/0 RNRs 0/0 REJs 0/0 INTs 0/0
7010a#
```

### Show Command for 2502a

```
2502a#show x25 vc
SVC 1024, State D1, Interface Serial1
Started 000410, last input 000350, output 000351
Connects 111 <--> 222 from
XOT between 10.1.1.1, 1998 and 10.1.1.2, 11011
Window size input 2, output 2
Packet size input 128, output 128
PS 7 PR 1 ACK 1 Remote PR 7 RCNT 0 RNR FALSE
Retransmits 0 Timer (secs) 0 Reassembly (bytes) 0
Held Fragments/Packets 0/0
Bytes 69/94 Packets 15/9 Resets 0/0 RNRs 0/0 REJs 0/0 INTs 0/0
2502a#
```

### Show Command for 2502b

```
2502b#show x25 vc
SVC 1024, State D1, Interface Serial1
Started 000346, last input 000326, output 000326
Connects 111 <--> PAD
Window size input 2, output 2
Packet size input 128, output 128
PS 1 PR 7 ACK 7 Remote PR 1 RCNT 0 RNR FALSE
Retransmits 0 Timer (secs) 0 Reassembly (bytes) 0
Held Fragments/Packets 0/0
Bytes 94/69 Packets 9/15 Resets 0/0 RNRs 0/0 REJs 0/0 INTs 0/0
2502b#
```

## Troubleshoot

This section provides information you can use to troubleshoot your configuration.

### Troubleshooting Commands

**Note:** Before issuing **debug** commands, refer to Important Information on Debug Commands.

- **debug x25 events** displays information about X.25 traffic in privileged EXEC mode.

- pad 222 logs you on to a PAD.

The debug output displayed when a pad call is placed from 2504a to 2502b is shown below. We are using the **debug x25 events** command.

### Debug for 2504a

```
2504a#pad 222
Trying 222...Open

User Access Verification

Password
054553 Serial0 X.25 O R1 Call (12) 8 lci 1024
054553   From (3) 111 To (3) 222
054553   Facilities (0)
054553   Call User Data (4) 0x01000000 (pad)
054553 Serial0 X.25 I R1 Call Confirm (5) 8 lci 1024
054553   From (0) To (0)
054553   Facilities (0)
2502b>en
Password
2502b#
```

### Debug for 7010a

```
7010a#debug x25 events
Jan 28 144359 Serial1/2 X25 I P1 CALL REQUEST (12) 8 lci 1024
Jan 28 144359 From(3) 111 To(3) 222
Jan 28 144359   Facilities (0)
Jan 28 144359   Call User Data (4) 0x01000000 (pad)
Jan 28 144359 XOT X25 O P1 CALL REQUEST (18) 8 lci 1024
Jan 28 144359 From(3) 111 To(3) 222
Jan 28 144359   Facilities (6)
Jan 28 144359   Window size 2 2
Jan 28 144359   Packet size 128 128
Jan 28 144359   Call User Data (4) 0x01000000 (pad)
Jan 28 144359 XOT X25 I P2 CALL CONNECTED (5) 8 lci 1024
Jan 28 144359 From(0) To(0)
Jan 28 144359   Facilities (0)
Jan 28 144359 Serial1/2 X25 O P4 CALL CONNECTED (5) 8 lci 1024
Jan 28 144359 From(0) To(0)
Jan 28 144359   Facilities (0)
7010a#
```

### Debug for 2502a

```
2502a#debug x25 events
Jan 28 144401 XOT X25 I R1 CALL REQUEST (18) 8 lci 1024
Jan 28 144401 From(3) 111 To(3) 222
Jan 28 144401   Facilities (6)
Jan 28 144401   Window size 2 2
Jan 28 144401   Packet size 128 128
Jan 28 144401   Call User Data (4) 0x01000000 (pad)
Jan 28 144401 Serial1 X25 O P2 CALL REQUEST (12) 8 lci 1024
Jan 28 144401 From(3) 111 To(3) 222
Jan 28 144401   Facilities (0)
Jan 28 144401   Call User Data (4) 0x01000000 (pad)
Jan 28 144401 Serial1 X25 I P2 CALL CONNECTED (5) 8 lci 1024
Jan 28 144401 From(0) To(0)
Jan 28 144401   Facilities (0)
Jan 28 144401 XOT X25 O P4 CALL CONNECTED (5) 8 lci 1024
Jan 28 144401 From(0) To(0)
```

Jan 28 144401 Facilities (0)  
2502a#

## Debug for 2502b

```
2502b#debug x25 events
Serial1 X25 I P1 CALL REQUEST (12) 8 lci 1024
From(3) 111 To(3) 222
  Facilities (0)
  Call User Data (4) 0x01000000 (pad)
Serial1 X25 O P4 CALL CONNECTED (5) 8 lci 1024
From(0) To(0)
  Facilities (0)
2502b#
```

## Related Information

- [X.25 Background](#)
- [Internetworking Design Basics](#)
- [DNS-Based X.25 Routing](#)
- [Configuring X.25 and LAPB](#)
- [Technical Support – Cisco Systems](#)

---

[Contacts & Feedback](#) | [Help](#) | [Site Map](#)

© 2014 – 2015 Cisco Systems, Inc. All rights reserved. [Terms & Conditions](#) | [Privacy Statement](#) | [Cookie Policy](#) | [Trademarks of Cisco Systems, Inc.](#)

---

Updated: Jun 01, 2005

Document ID: 9363

---