

E1 PRI Troubleshooting Flowchart

Document ID: 14164

Contents

Introduction

Prerequisites

- Requirements

- Components Used

- Conventions

Flowchart

Related Information

Introduction

This document shows the E1 PRI troubleshooting flowchart.

Prerequisites

Requirements

There are no specific requirements for this document.

Components Used

This document is not restricted to specific software and hardware versions.

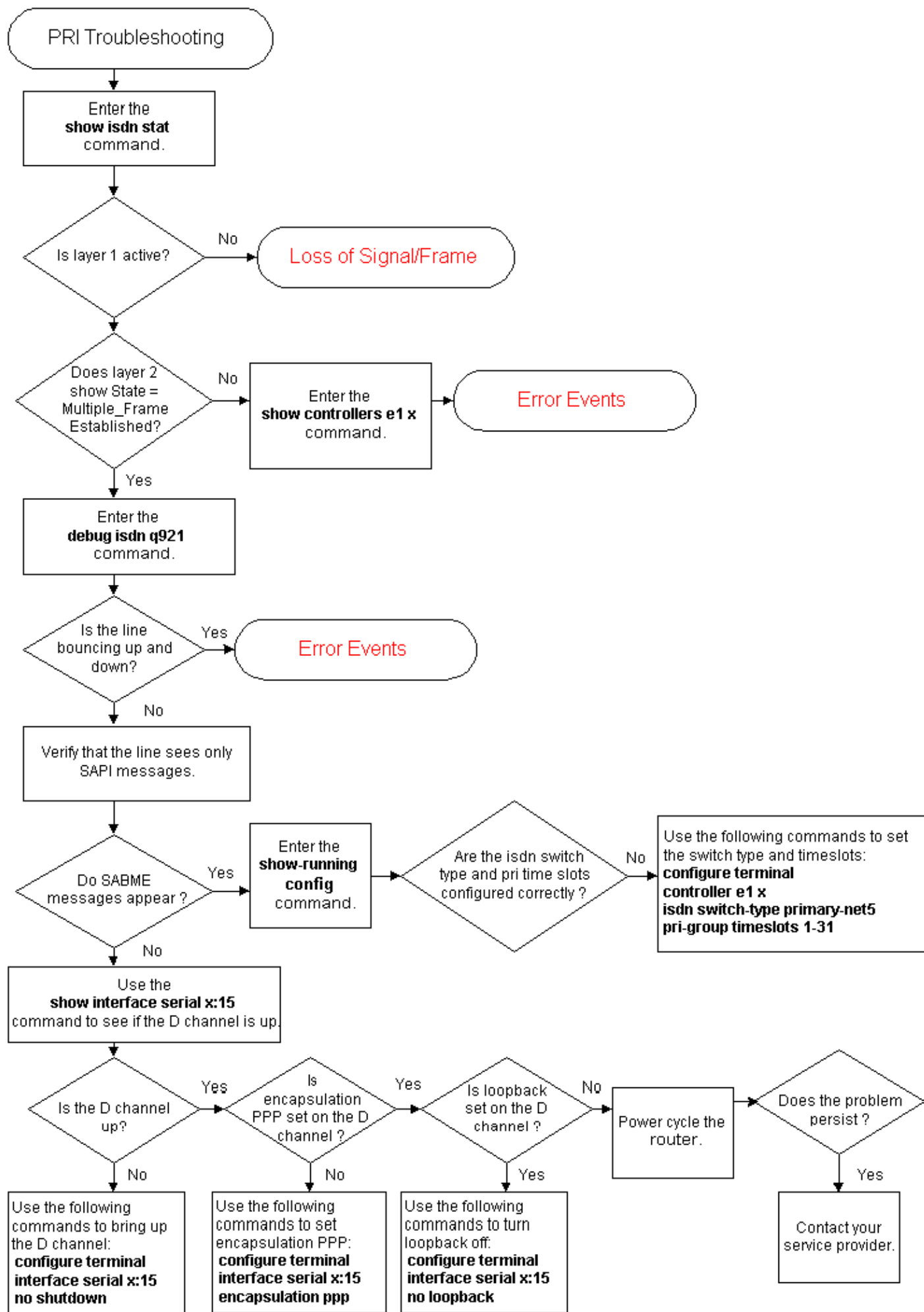
The information in this document was created from the devices in a specific lab environment. All of the devices used in this document started with a cleared (default) configuration. If your network is live, make sure that you understand the potential impact of any command.

Conventions

Refer to Cisco Technical Tips Conventions for more information on document conventions.

Flowchart

In order to view more information, click the command boxes. Click the information in red to go to the next flow chart.



Related Information

- **E1 Troubleshooting**
 - **E1 Layer 1 Troubleshooting**
 - **E1 Alarm Troubleshooting**
 - **E1 Error Event Troubleshooting**
 - **Hard Plug Loopback Test for E1 Lines**
 - **Technical Support & Documentation – Cisco Systems**
-

[Contacts & Feedback](#) | [Help](#) | [Site Map](#)

© 2014 – 2015 Cisco Systems, Inc. All rights reserved. [Terms & Conditions](#) | [Privacy Statement](#) | [Cookie Policy](#) | [Trademarks of Cisco Systems, Inc.](#)

Updated: Nov 14, 2005

Document ID: 14164
