

Hard Plug Loopback Test for E1 Lines Flowchart

Document ID: 14162

Please provide your feedback on this document.

Contents

Introduction

Prerequisites

Requirements

Components Used

Conventions

Troubleshooting Flowchart

Related Information

Introduction

This document provides a troubleshooting flowchart for the Hard Plug Loopback test for E1 lines. To see more information on the commands below, refer to Hard Plug Loopback Tests for E1 Lines.

Prerequisites

Requirements

There are no specific prerequisites for this document.

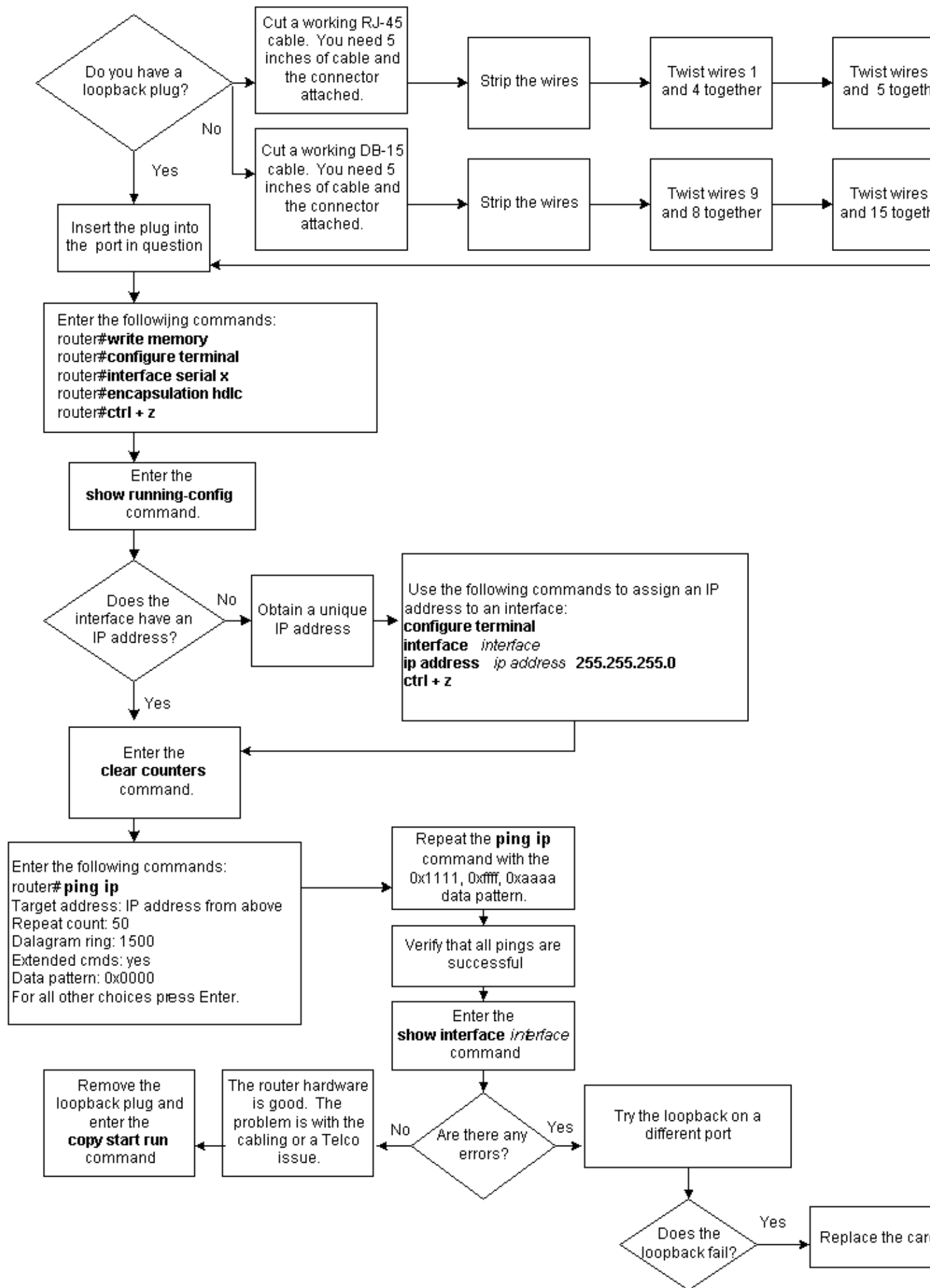
Components Used

This document is not restricted to specific software and hardware versions.

Conventions

For more information on document conventions, see the Cisco Technical Tips Conventions.

Troubleshooting Flowchart



Related Information

- [E1 Troubleshooting](#)
 - [E1 Layer 1 Troubleshooting](#)
 - [E1 Alarm Troubleshooting](#)
 - [E1 Error Event Troubleshooting](#)
 - [E1 PRI Troubleshooting](#)
 - [Access Technology Support Pages](#)
 - [Technical Support – Cisco Systems](#)
-

[Contacts & Feedback](#) | [Help](#) | [Site Map](#)

© 2014 – 2015 Cisco Systems, Inc. All rights reserved. [Terms & Conditions](#) | [Privacy Statement](#) | [Cookie Policy](#) | [Trademarks of Cisco Systems, Inc.](#)

Updated: Sep 09, 2005

Document ID: 14162
