

Setting Up, Viewing, and Collecting Cisco IPCC Express Traces

Document ID: 45344

Contents

Introduction

Prerequisites

- Requirements
- Components Used
- Conventions

Set Up and Collect Traces for 2.x Environments

- Enable Trace

Set Up and Collect Traces for 3.x Environments

- Enable Trace

Related Information

Introduction

The Cisco IPCC Express Edition is a product suite platform that covers:

- IP Interactive Voice Response (IP-IVR)
- IP Integrated Contact Distribution (IP ICD)
- IP Queue Manager (IP-QM)
- IP AutoAttendant
- Extended Services

It is also known as Customer Response Solutions (CRS) and Customer Response Applications (CRA).

This document explains how to enable and collect traces for IPCC Express in preparation for troubleshooting problems with assistance from the Cisco Technical Assistance Center (TAC).

Refer to AVVID TAC Cases: Collecting Troubleshooting Information for additional information on which trace levels to enable to troubleshoot a particular problem.

Prerequisites

Requirements

Cisco recommends that you have knowledge of this topic:

- Microsoft Windows 2000 Administration

Components Used

The information in this document is based on these software and hardware versions:

- Cisco IPCC Express Version 3.x
- Cisco Extended Services 2.x and 3.x
- Cisco Customer Response Application 2.x

The information in this document was created from the devices in a specific lab environment. All of the devices used in this document started with a cleared (default) configuration. If your network is live, make sure that you understand the potential impact of any command.

Conventions

Refer to Cisco Technical Tips Conventions for more information on document conventions.

Set Up and Collect Traces for 2.x Environments

Enable Trace

Complete these steps:

1. Open a browser.

Enter the URL for the Application Administration Page. For example:

```
http://10.10.10.1/appadmin
```

2. Log on to the administrator account.
3. Click **Engine**.

See Figure 1.

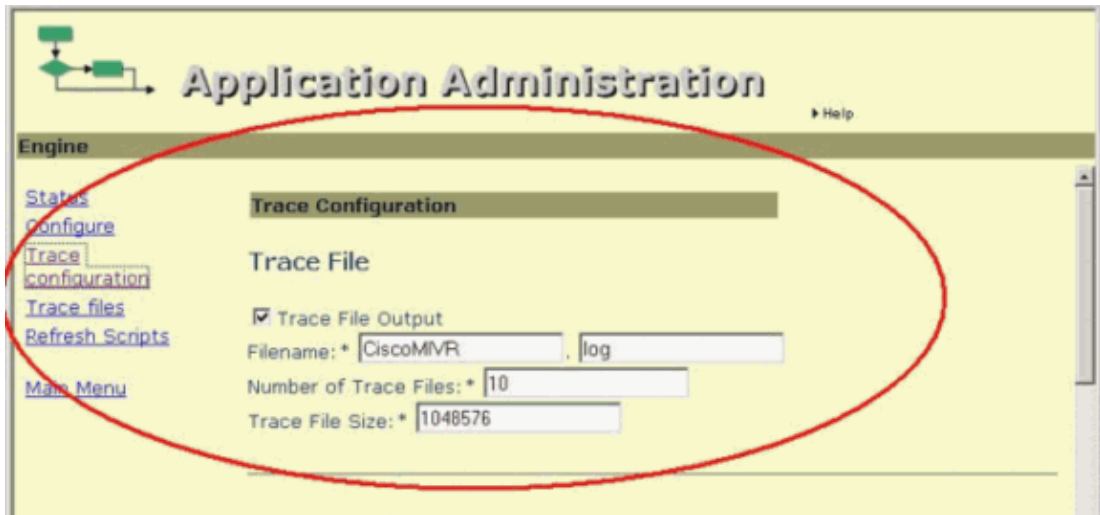
Figure 1 Application Administration: Engine



4. Select **Trace Configuration** on the Engine Page.

See Figure 2.

Figure 2 Application Administration: Trace Configuration



Note: Trace Configuration requires you to define the filename prefix, extension, size, and number of files generated. Only make adjustments as instructed by your Cisco technical representative. The logs overwrite the oldest files based on the date and the time when the maximum number of files is reached.

5. Select all the checkboxes in the Alarm Tracing column on the Trace Configuration Page.

See Figure 3.

Figure 3 Inactive trace level options



6. Select all the necessary checkboxes in the Debugging column.
7. Click **Update** at the bottom of the page.

See Figure 3.

Note: Click the **Status** hyperlink on the Engine Page to restart the Engine in order to generate a new set of traces.

8. Click **Trace Files** to view the trace files.

See Figure 4.

Figure 4 Application Administration: Trace Files



Locate the file with the prefix and extension according to your settings in the Trace Configuration section.

9. Click on the file to view the log.
10. Right-click **My Computer** to collect the logs.
11. Select **Explore**.
12. Choose **View > Details**.
13. Locate the subdirectory c:\Program Files\wfvavid.

Locate files based on the Modified time and date.

Set Up and Collect Traces for 3.x Environments

Enable Trace

Complete these steps:

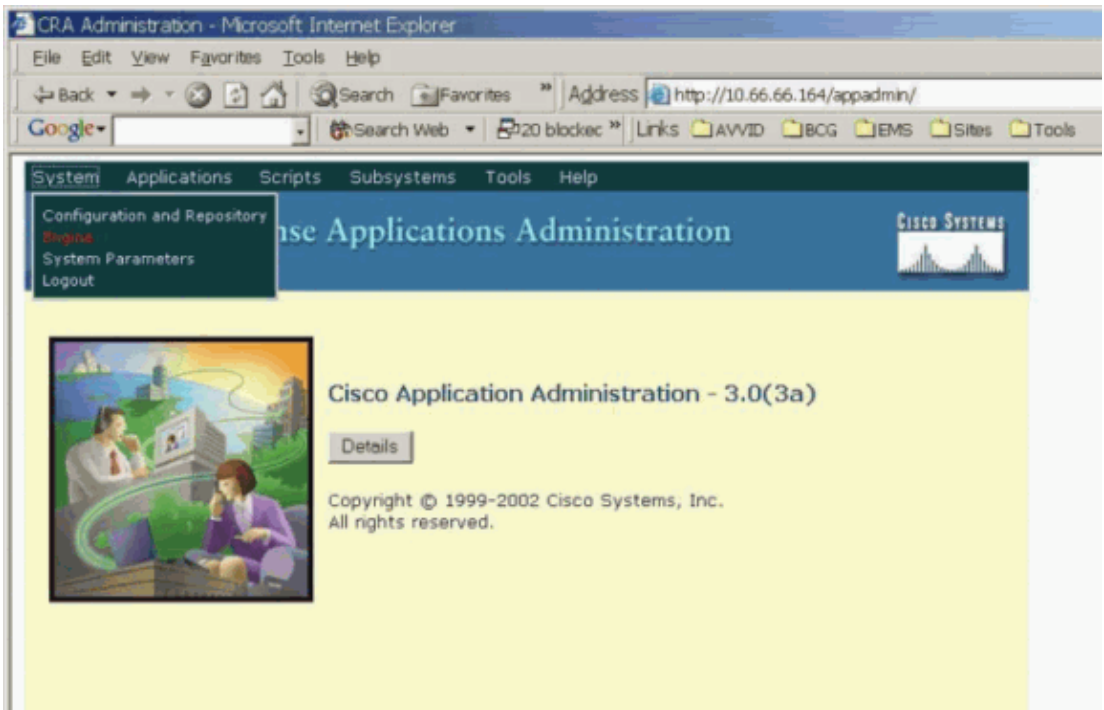
1. Open a browser.

Enter the URL for the Application Administration Page. For example:

`http://10.1.1.1/AppAdmin`

See Figure 5.

Figure 5 Cisco Application Administration



2. Log on to the administrator account.
3. Choose **System** > **Engine**.
4. Select **Trace Configuration**.

See Figure 6.

Figure 6 Customer Response Applications Administration: Trace Configuration



Note: Trace Configuration requires you to define the filename prefix, extension, size, and number of files generated. Only make adjustments as instructed by your Cisco technical representative. The logs overwrite the oldest files based on the date and time when the maximum number of files is reached.

5. Click **Restore Defaults** on the Trace Configuration Page.

This resets all the checkboxes on the Alarm Tracing column.

See Figure 7.

Figure 7 Active Trace Level Options

Facility	Subfacility	Debugging	Alarm Tracing
MIVR			
	ADM	<input type="checkbox"/>	<input checked="" type="checkbox"/>
	APP_MGR	<input type="checkbox"/>	<input checked="" type="checkbox"/>
	CHANNEL_MGR	<input type="checkbox"/>	<input checked="" type="checkbox"/>
	CONTACT_MGR	<input type="checkbox"/>	<input checked="" type="checkbox"/>
	CONTACT_STEPS	<input type="checkbox"/>	<input checked="" type="checkbox"/>
	CRA_HRDM	<input type="checkbox"/>	<input checked="" type="checkbox"/>
	DOCUMENT_STEPS	<input type="checkbox"/>	<input checked="" type="checkbox"/>
	ENG	<input type="checkbox"/>	<input checked="" type="checkbox"/>
	GENERAL_STEPS	<input type="checkbox"/>	<input checked="" type="checkbox"/>
	GRAMMAR_MGR	<input type="checkbox"/>	<input checked="" type="checkbox"/>
	ICD_CTI	<input type="checkbox"/>	<input checked="" type="checkbox"/>

6. Select all the necessary boxes in the Debugging column against the necessary Subfacilities.

See Figure 7.

7. Click **Update** at the bottom of the page.

See Figure 8.

Figure 8 Debugging

Facility	Subfacility	Debugging	Alarm Tracing
MIVR			
	DB_STEPS	<input type="checkbox"/>	<input checked="" type="checkbox"/>
	JAVA_STEPS	<input type="checkbox"/>	<input checked="" type="checkbox"/>
	LIB_DIRECTORY	<input type="checkbox"/>	<input checked="" type="checkbox"/>
	MESSAGING_STEPS	<input type="checkbox"/>	<input checked="" type="checkbox"/>
	STEP_CALL_CONTROL	<input type="checkbox"/>	<input checked="" type="checkbox"/>
	STEP_ENT_SRV	<input type="checkbox"/>	<input checked="" type="checkbox"/>
	STEP_GRAMMAR	<input type="checkbox"/>	<input checked="" type="checkbox"/>
	STEP_PROMPT	<input type="checkbox"/>	<input checked="" type="checkbox"/>
	STEP_SESSION	<input type="checkbox"/>	<input checked="" type="checkbox"/>
	STEP_SESSION_MGMT	<input type="checkbox"/>	<input checked="" type="checkbox"/>
	WEB_STEPS	<input type="checkbox"/>	<input checked="" type="checkbox"/>

Note: Click the **Status** hyperlink on the Engine Page to restart the Engine in order to generate a new set of traces.

8. Click **Trace Files** to view the traces.
9. Locate the file with the prefix and extension according to the Trace Configuration settings.
10. Click on the file to view the log.
11. Right-click **My Computer** to collect the logs.
12. Select **Explore**.
13. Choose **View > Details**.
14. Go to the subdirectory c:\Program Files\wfaavid\log.
15. Locate the files based on the Modified time and date.

Related Information

- [Cisco IPCC Express Support Checklist](#)
 - [Cisco IPCC Express Maintenance and Recovery Guide](#)
 - [Set Up Cisco CallManager Traces for the TAC](#)
 - [AVVID TAC Cases: Collecting Troubleshooting Information](#)
 - [Technical Support & Documentation – Cisco Systems](#)
-

[Contacts & Feedback](#) | [Help](#) | [Site Map](#)

© 2013 – 2014 Cisco Systems, Inc. All rights reserved. [Terms & Conditions](#) | [Privacy Statement](#) | [Cookie Policy](#) | [Trademarks of Cisco Systems, Inc.](#)

Updated: Nov 30, 2005

Document ID: 45344
