

TechNote on Customization of Jabber MSI Installer using MS Orca

Contents

[Introduction](#)

[Prerequisites](#)

[Requirements](#)

[Components Used](#)

[Configure](#)

Introduction

This document describes how to customize the Cisco Media Services Interface (MSI) installer for Jabber using MS Orca.

MS Orca is a Windows MSI installer editor. It is a database table editor for creating and editing Windows Installer packages and merge modules.

Prerequisites

Requirements

There are no specific requirements for this document.

Components Used

The information in this document is based on these software versions.

- Microsoft Orca : Windows SDK 7.1 or later.
- Cisco Jabber installer version 9.0 and above.

The information in this document was created from the devices in a specific lab environment. All of the devices used in this document started with a cleared (default) configuration. If your network is live, make sure that you understand the potential impact of any command.

Configure

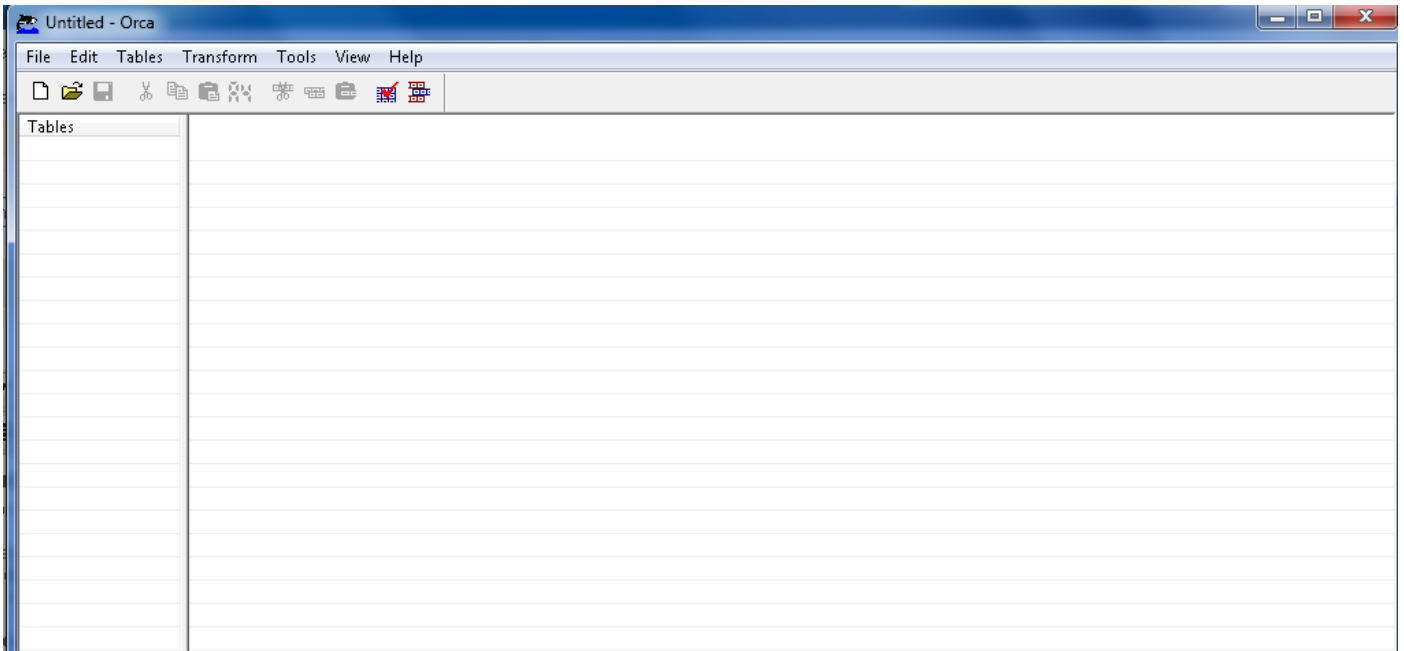
This is the procedure to customize MS installer.

Step 1. Download and Install Microsoft Orca.

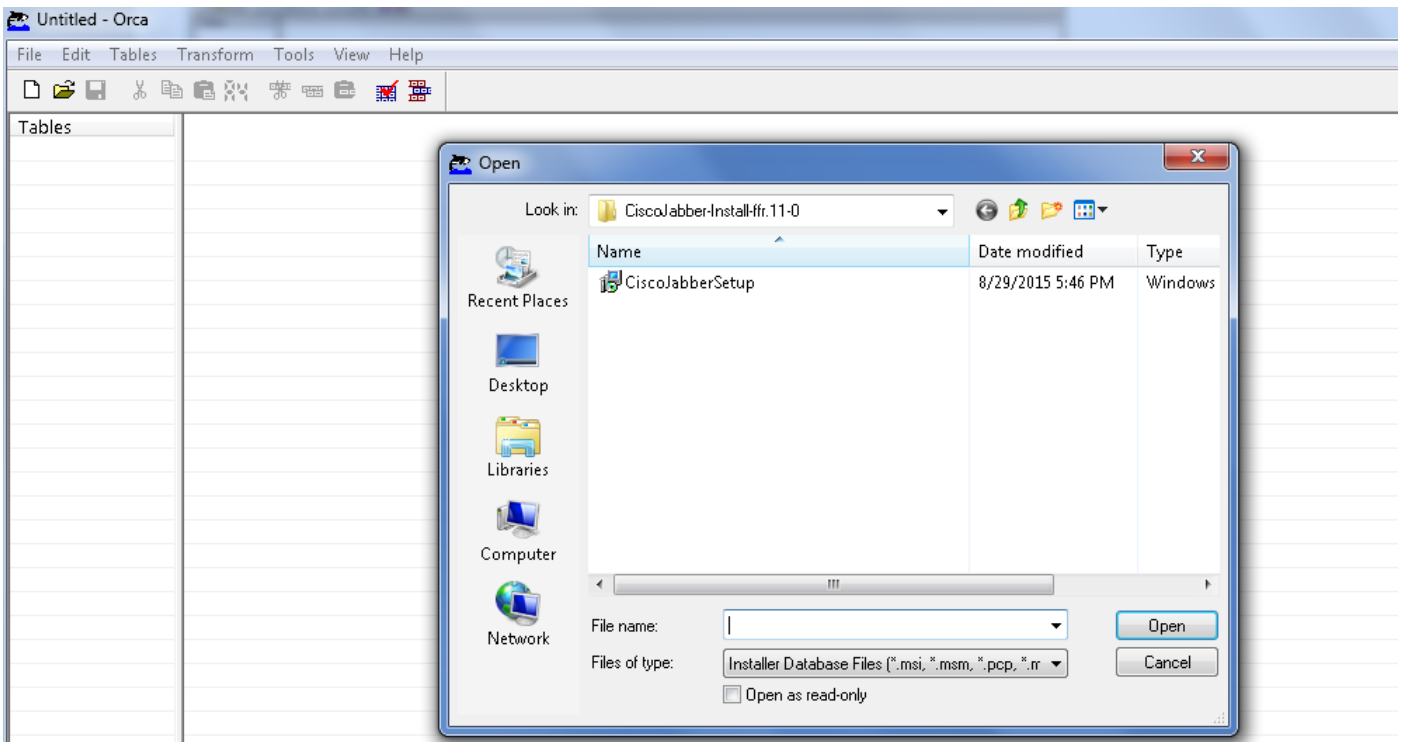
Step 2. Download the installer of Jabber that you want to customize along with the administrator package from the Cisco page.

Step 3. Unzip the installer and the administrator package in a single folder.

Step 4. Launch Microsoft Orca.



Step 5. As shown in the image, open the jabber msi installer, **CiscoJabberSetup.msi** in Orca.

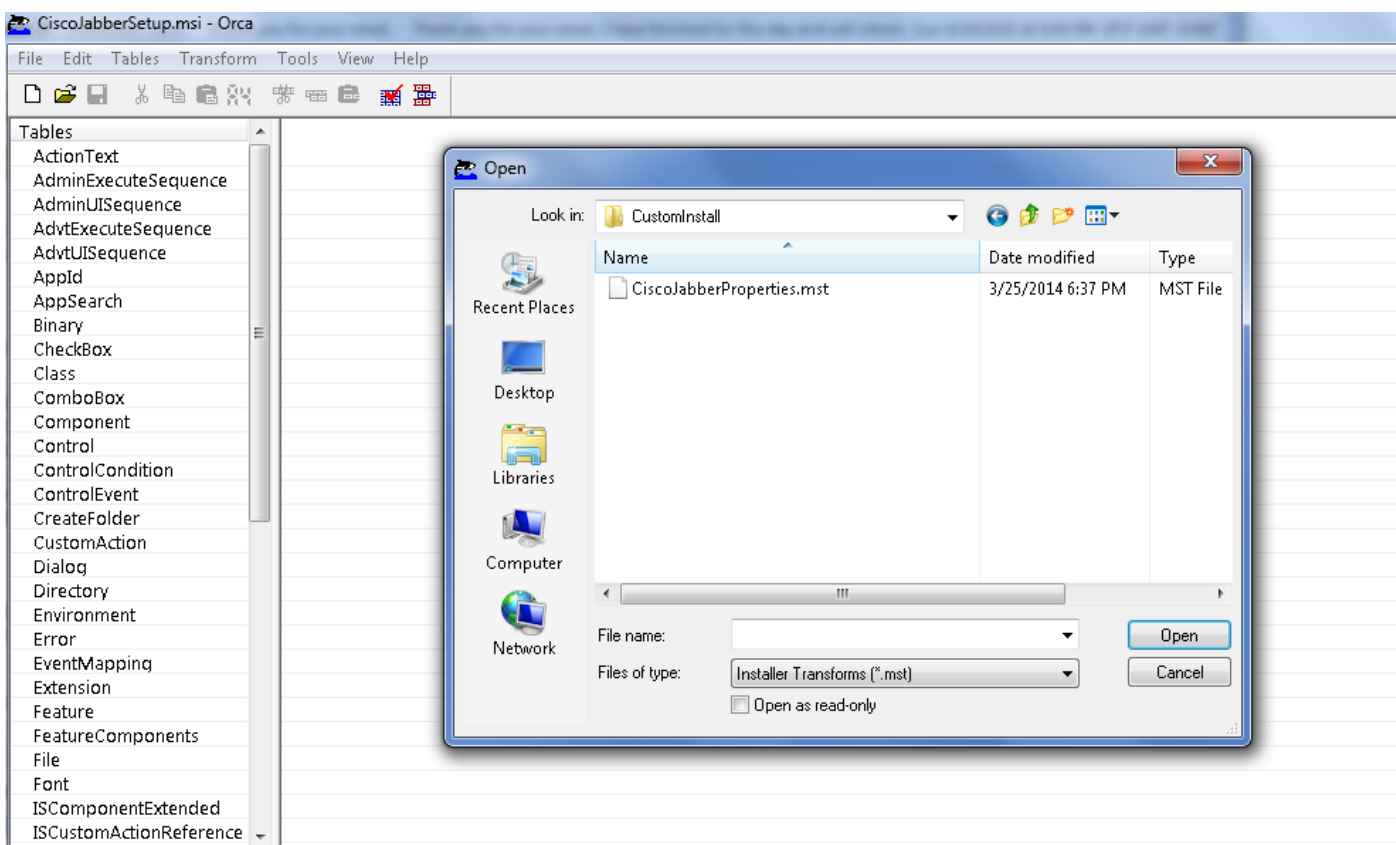


Step 6. Remove all the language codes except for 1033(English).

Note: This restriction is because MS Orca doesn't retain any languages except for the default, which is 1033. If all language codes are not removed from the custom installer, the installer cannot run on any operating system where the language is other than English.

ListView	PROGMSG_IIS_REMOVEWEBSERVICEEXTENSIONS	Removing web service extensions...
Media	PROGMSG_IIS_REMOVEWEBSITES	Removing IIS websites...
ModuleComponents	PROGMSG_IIS_ROLLBACKAPPPOLS	Rolling back application pools...
ModuleSignature	PROGMSG_IIS_ROLLBACKVROOTS	Rolling back virtual directory and web site changes...
MsiFileHash	PROGMSG_IIS_ROLLBACKWEBSERVICEEXTENSIONS	Rolling back web service extensions...
Patch	PROGRAMFILETOLAUNCHATEND	Launch
ProgId	ProductID	none
Property	ProductLanguage	1033
RadioButton	ProductName	Cisco Jabber
ReqLocator	ProductVersion	11.0.0.65527
Registry	ProgressType0	install
RemoveFile	ProgressType1	Installing
Shortcut	ProgressType2	installed

Step 7. Navigate to **Transform > Apply Transform**, browse to the location of the transform file in the file system. Select the transform file and then click on **Open**, as shown in the image. To create a custom installer, a transform file is needed. Transform files contain installation properties which are applied to the installer.



Step 8. As shown in the image, navigate to **Tables > Property**, a list of properties can be visible in the right panel out of which the ones with green background lines are the customizable properties

Property	Value
RebootYesNo	Yes
ReinstallModeText	omus
SHOWLAUNCHPROGRAM	-1
SecomSDKFilename	SecomSDK.exe
SecureCustomProperties	ISFOUNDNEWERPRODUCTVERSION;USERNAME;COMPANYNAME;ISX_SERIALNUM;SUPPOR...
TELEMETRY_ENABLED	0
WebExMapiFileName	wbxcOIE.exe
WebExMapiFileName64	wbxcOIE64.exe
q	0
tewst	0
true	0
ISReleaseFlags	NoFlags
InstallShieldTempProp	0
CLEAR	<Bootstrap override argument>
SERVICES DOMAIN	<Services domain>
USE_FT_GATEWAY	<File transfer support>
LOGIN_RESOURCE	<Multi-resource login support>
CCMCIP	<CCMCIP server address>
CTI	<CTI server address>
TFTP	<TFTP server address>
PRODUCT MODE	<Your Jabber product mode>
AUTHENTICATOR	<Fallback Authenticator>
CUP_ADDRESS	<IPAddress/Hostname/FQDN>
FORGOT_PASSWORD_URL	<URL to organizations change password site>
TFTP FILE NAME	<Name of the TFTP file>
LANGUAGE	<The language code e.g. 1033>
SSO_ORG_DOMAIN	<Domain for SSO configuration>
VOICE SERVICES DOMAIN	<Voice Services Domain>
EXCLUDED_SERVICES	<CUP_CUCM_WEBEX>

Step 9. Specify the values to the properties as per requirements.

CLEAR	1
SERVICES DOMAIN	<Services domain>
USE_FT_GATEWAY	<File transfer support>
LOGIN_RESOURCE	<Multi-resource login support>
CCMCIP	<CCMCIP server address>
CTI	<CTI server address>
TFTP	<TFTP server address>
PRODUCT MODE	<Your Jabber product mode>
AUTHENTICATOR	<Fallback Authenticator>
CUP_ADDRESS	<IPAddress/Hostname/FQDN>
FORGOT_PASSWORD_URL	<URL to organizations change password site>
TFTP FILE NAME	<Name of the TFTP file>
LANGUAGE	<The language code e.g. 1033>
SSO_ORG_DOMAIN	<Domain for SSO configuration>
VOICE SERVICES DOMAIN	<Voice Services Domain>
EXCLUDED_SERVICES	WEBEX

Step10. Delete all the other properties that are not required.

It is important to delete the properties not being set, or the required properties shall not take effect.

For deleting the non-required properties go the property to be dropped and **right click** on it.

Select **Drop Row** and select **OK**, as shown in the image:

CLEAR	1
SERVICES DOMAIN	<Services domain>
USE_FT_GATEWAY	<File tra
LOGIN_RESOURCE	<Multi-r
CCMCIP	<CCMCI
CTI	<CTI ser
TFTP	<TFTP sg
PRODUCT_MODE	<Your Ja
AUTHENTICATOR	<Fallbac
CUP_ADDRESS	<IPAddr
FORGOT_PASSWORD_URL	<URL to
TFTP_FILE_NAME	<Name
LANGUAGE	<The lar
SSO_ORG_DOMAIN	<Domain
VOICE_SERVICES_DOMAIN	<Voice S
EXCLUDED_SERVICES	WEBEX

Property - 149 rows

Errors...

Cut Cell Ctrl+X

Copy Cell Ctrl+C

Paste Cell Ctrl+V

Paste New GUID Ctrl+G

Import Text File...

Cut Row(s) Ctrl+Shift+X

Copy Row(s) Ctrl+Shift+C

Paste Row(s) Ctrl+Shift+V

Add Row Ctrl+R

Drop Row

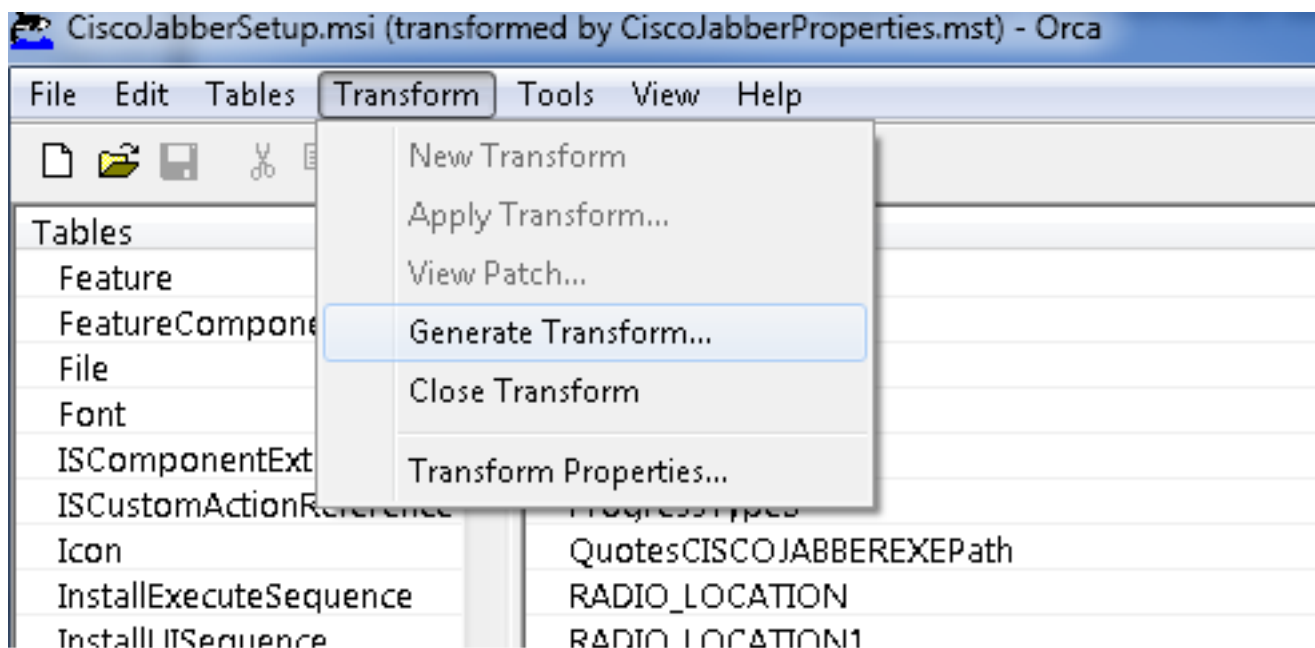
Step 11. Retain the properties that are required to be altered.

ISReleaseFlags	NoFlags
InstallShieldTempProp	0
CLEAR	1
EXCLUDED_SERVICES	WEBEX

Step 12. The transformed file generated also can be saved and used to modify the properties of the installer.

To save the transformed file, navigate to **Transform > Generate Transform**, as shown in the image.

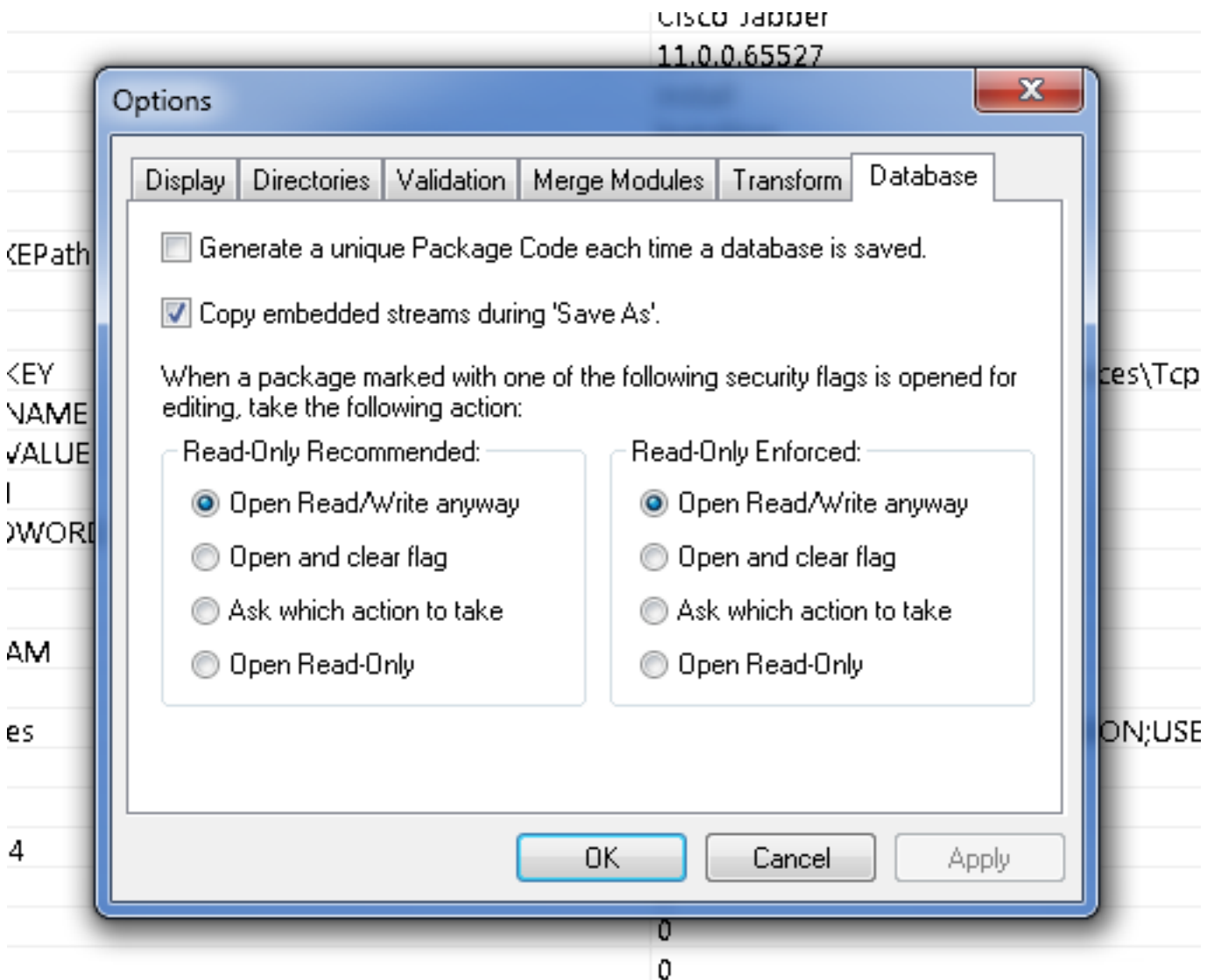
This transformed file can be saved in the format **filename.mst**.



Step 13. Enable the installer to save the embedded streams.

Navigate to **Tools > Options** and under **Database** tab, check **Copy embedded streams during**

'Save As' and then click in **Apply** and **OK**, as shown in the image:



Step 14. Save the customized installer as you navigate to **File > Save Transformed As**. Specify a suitable name and click in **Save**.

This customized installer can be used with the group policy deployment.