

CBW 150AX Day Zero Configuration

Objective

The objective of this document is to show you how to configure the day zero setup of a CBW 150AX Access Point (AP) using the Setup Wizard on your PC running Windows 10.

Applicable Devices | Firmware Version

- CBW 150AX AP | 10.2.2.0

Supported Browsers

CBW APs are administered through a web user interface. To use this interface, your browser must be one of the following:

- Microsoft Internet Explorer 10 or above
- Apple Safari version 7 or above
- Mozilla Firefox version 33 or above
- Google Chrome version 38 or above

Requirements

- A DHCP Server is required for the day zero setup.
- Only ONE CBW deployment per LAN is feasible. If you need more than one deployment, it is required to isolate the networks.
- All primary-capable APs must be on the same VLAN.

Introduction

If you are looking to set up your Cisco Business wireless device, you have come to the right place! The day zero configuration will guide you through setting up your new, out of the box CBW 150AX AP.

The CBW 150AX access points and 151AXM mesh extenders are the next generation of the Cisco Business Wireless Product line.

The major new feature is the implementation of 802.11ax, that uses Wi-Fi 6. These new Access Points provide improved performance by increasing the efficacy of the network and its ability to manage higher numbers of devices.

These APs can be used as traditional standalone devices or as part of a mesh network.

These APs are not compatible with the previous CBW series that include 140AC, 145AC, and 240AC AP, or the 141ACM, 142ACM, and 143ACM Mesh Extenders.

If you are ready to configure your CBW 150AX AP, let's get you setup!


Setup Wizard

This toggled section highlights tips for beginners.

Logging In

Log into the Web User Interface (UI) of the Primary AP. To do this, open a web browser and enter <https://ciscobusiness.cisco>. You may receive a warning before proceeding. Enter your credentials. You can also access the Primary AP by entering <https://>

Tool Tips

If you have questions about a field in the user interface, check for a tool tip that looks like the following: 

Trouble locating the Expand Main Menu icon?

Navigate to the menu on the left-hand side of the screen, if you don't see the menu button, click

this icon to open the side-bar menu.



Step 1

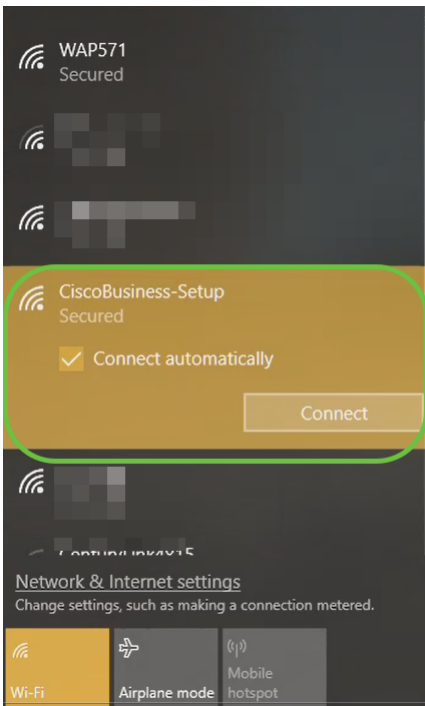
To get started, power up the access point. Check the status of the indicator lights. The access point will take about 8 - 10 minutes to boot. The LED will blink green in multiple patterns, alternating rapidly through green, red, and amber before turning green again. There may be small variations in the LED color intensity and hue from unit to unit. When the LED light is blinking green, proceed to the next step.

The PoE Ethernet Uplink Port on the Primary AP can ONLY be used to provide uplink to the LAN, and NOT to connect to any other primary-capable or mesh extender devices.

If you are unfamiliar with the terms used, check out [Cisco Business: Glossary of New Terms](#).

Step 2

On your PC, click the Wi-Fi icon and choose CiscoBusiness-Setup wireless network. Click Connect.



If your access point isn't new, out of the box, make sure it is reset to factory default settings for the CiscoBusiness-Setup SSID to show up in your Wi-Fi options.

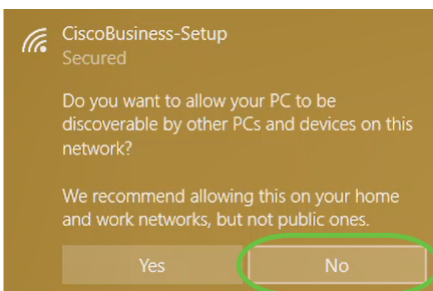
Step 3

Enter the passphrase **cisco123** and click **Next**.



Step 4

You will get the following screen. As you can configure only one device at a time, Click **No**.



Only one device can be connected to the *CiscoBusiness-Setup* ssid. If a second device attempts to connect, it will not be able to. If you are unable to connect to the SSID and have validated the password, some other device may have made the connection. Restart the AP and try again.

Step 5

Once connected, the web browser should auto-redirect to the CBW AP setup wizard. If not, open a web browser, such as Internet Explorer, Firefox, Chrome or Safari. In the address bar, type **http://ciscobusiness.cisco** and press **Enter**. Click **Start** on the webpage.

Cisco Business Wireless Access Point

Welcome! Thank you for choosing Cisco Access Points. This setup wizard will help you install your Access Point.

Start

Cisco Systems, Inc. All rights reserved. Cisco, the Cisco logo, and Cisco Systems are registered trademarks or trademarks of Cisco Systems, Inc. and/or its affiliates in the United States and certain other countries. All third party trademarks are the property of their respective owners.

If you do not see the webpage, wait for a few more minutes or reload the page. After this initial setup, you will use <https://ciscobusiness.cisco> to log in. If your web browser auto-populates with <http://>, you need to manually type in the <https://> to gain access.

Step 6

Create an *admin account* by entering the following:

- Admin username (Maximum of 24 characters)
- Admin password
- Confirm admin password

You can choose to show the password by checking the checkbox next to *Show Password*. Click **Start**.



Cisco Business Wireless

Access Point

Welcome! Please start by creating an admin account.

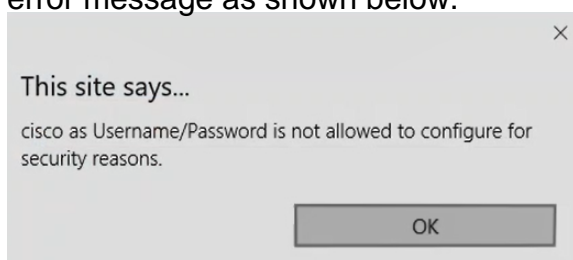
 ? 1 ? 2 3

Show Password

Credentials will be used to manage the Access Point

 4

Do not use “cisco” or variations of it in the username or password fields. If you do, you will get an error message as shown below.



Step 7

Set Up Your Primary AP by entering the following:

- Primary AP Name
- Country
- Date & Time
- Timezone
- (Optional) Mesh

Click **Next**.



1 Set Up Your Primary AP

Primary AP Name

Test



1

Country

United States (US)



2

Date & Time

04/09/2021



9:11:17



3

Timezone

Central Time (US and Canada)



4

Mesh



5

Mesh should be enabled only if you plan to create a mesh network. By default, it is disabled.

Step 8



Create Your Wireless Networks by entering the following:

- Network Name
- Choose Security
- Passphrase
- Confirm Passphrase
- (Optional) Check the checkbox to Show Passphrase.

Click **Next**.

2 Create Your Wireless Network



Network Name	<input type="text" value="Test123"/>	 1
Security	<input type="text" value="WPA2 Personal"/>	2
Passphrase	<input type="password" value="••••••••"/>	 3
Confirm Passphrase	<input type="password" value="••••••••"/>	4
	<input type="checkbox"/> Show Passphrase	5
	<input type="button" value="Back"/>	<input type="button" value="Next"/> 6

Wi-Fi protected Access (WPA) version 2 (WPA2), is the current standard for Wi-Fi security.

Step 9

Confirm the settings and click **Apply**.



Cisco Business Wireless 140AC Access Point

Please confirm the configurations and Apply

1 Primary AP Settings

Username	Admin
Primary AP Name	Test
Country	United States (US)
Date & Time	04/09/2021 9:14:16
Timezone	Central Time (US and Canada)
Mesh	No
Management IP Address	DHCP assigned IP Address

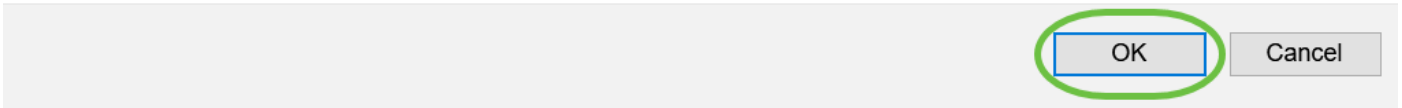
2 Wireless Network Settings

Network Name	Test123
Security	WPA2 Personal

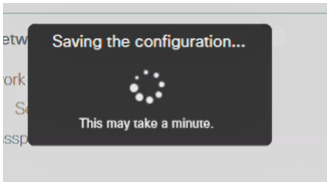
Step 10

Click **OK** to apply the settings.

Primary AP will reboot after these configurations are applied. Click Ok to continue or click Cancel to return to the set up wizard.



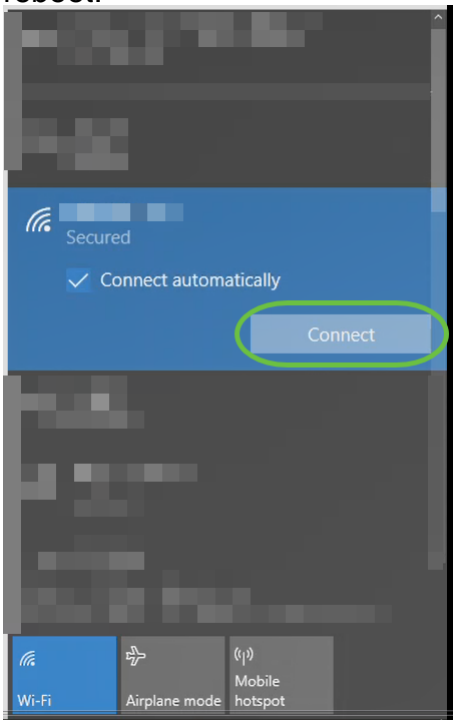
You will see the following screen while the configurations are being saved and the system reboots. This might take 5 - 6 minutes.



Step 11

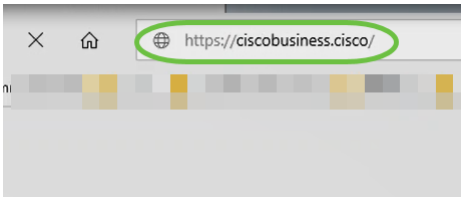
Go to the wireless options on your PC and choose the network that you configured. Click **Connect**.

In this example, the network is **CBWWlan**. The CiscoBusiness-Setup SSID will disappear after reboot.



Step 12

Open a web-browser and type in *https://[IP address of the CBW AP]*. Alternatively you can type *https://ciscobusiness.cisco* in the address bar and press enter. Be sure that you type https and not http at this step.



If you are using a wired connection after the initial setup, make sure to use *https://[IP address of the CBW AP]* and not *https://ciscobusiness.cisco*. The latter will only work in a wireless setting.

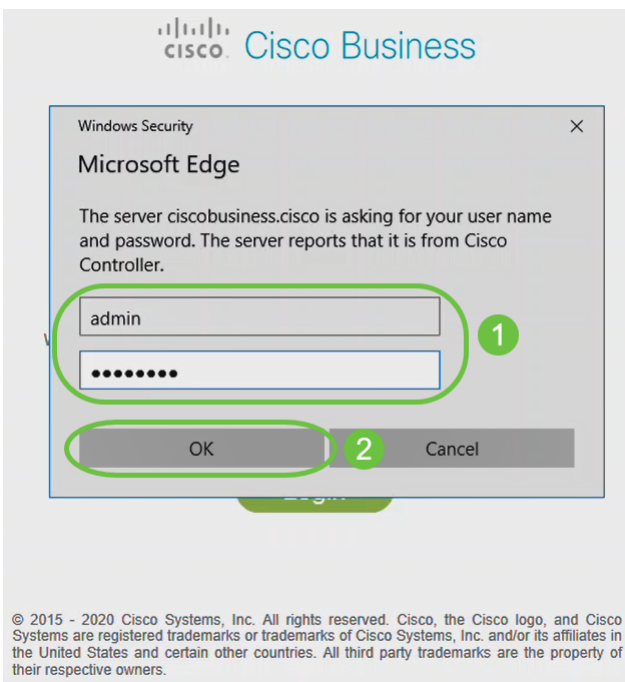
Step 13

Click **Login**.



Step 14

Log in using the credentials that were configured. Click **OK**.



Step 15

You will be able to access the web-configuration page of the AP.

The screenshot displays the Cisco Business Wireless Access Point web-configuration interface. The top navigation bar includes the Cisco logo, the device name 'Cisco Business Wireless Access Point', and several utility icons. A dark sidebar on the left contains menu items for Monitoring, Applications, Rogues, Wireless Dashboard, and Management. The main content area is titled 'Network Summary' and features a grid of status cards. The 'Access Points' card is highlighted with a green underline. Below the summary are two expandable panels: 'ACCESS POINTS BY USAGE' which currently shows 'NO DATA TO DISPLAY', and 'CLIENTS' which has dropdown filters for 'Client Identity', 'Device Type', and 'Usage'.

If you have any issues, check out the following tips:

- Make sure the correct Service Set Identifier (SSID) is selected. This is the name that you created for the wireless network.
- Disconnect any VPN for either the mobile app or on a laptop. You might even be connected to a VPN that your mobile service provider uses that you might not even know. For example, an Android (Pixel 3) phone with Google Fi as a service provider there is a built-in VPN that auto-connects without notification. This would need to be disabled to find the Primary AP.
- Log into the Primary AP with `https://<IP address of the Primary AP>`.
- Once you do initial setup, be sure `https://` is being used whether you are logging into `ciscobusiness.cisco` or by entering the IP address into your web browser. Depending on your settings, your computer may have auto-populated with `http://` since that is what you used the very first time you logged in.
- To help with problems related to accessing the web UI or browser issues during the use of the AP, in the web browser (Firefox in this case) click on Open menu, go to Help > Troubleshooting Information and click on Refresh Firefox.

Conclusion

There you have it! You have now successfully configured the day zero setup of your CBW 150AX AP. Enjoy the benefits of a reliable and secure device on your network.