

Install and Configure FindIT Network Manager and FindIT Network Probe on a VMware Virtual Machine

Objective

The Cisco FindIT Network Management provides tools that help you easily monitor, manage, and configure your Cisco 100 to 500 Series network devices such as switches, routers, and wireless access points (WAPs) using your web browser. It also notifies you about device and Cisco Support notifications such as the availability of new firmware, device status, network settings updates, and any connected devices that are no longer under warranty or covered by a support contract.

The FindIT Network Management is a distributed application which is comprised of two separate components or interfaces: one or more Probes referred to as FindIT Network Probe and a single Manager called FindIT Network Manager.

An instance of FindIT Network Probe installed at each site in the network performs network discovery and communicates directly with each Cisco device. In a single site network, you may choose to run a standalone instance of FindIT Network Probe. However, if your network comprises multiple sites, you may install FindIT Network Manager at a convenient location and associate each Probe with the Manager. From the Manager interface, you can get a high-level view of the status of all the sites in your network, and connect to the Probe installed at a particular site when you wish to view detailed information for that site.

This article provides instructions on how to install and configure FindIT Network Manager and FindIT Network Probe using a VMware virtual machine (VM).

Note: If you prefer to install and configure FindIT Network Manager and Probe on a different platform, click [here](#) for Oracle VM VirtualBox Manager, or click [here](#) for Microsoft Hyper-V Manager.

[Install FindIT Network Manager on VMware](#)

For the FindIT Network Manager, an Open Virtual Appliance (OVA) format VM image can be deployed to VMware products.

Install FindIT Network Manager using any of the available virtual machines below and then configure its deployment:

[VMware Fusion](#)

[VMware vSphere Client](#)

[VMware Workstation Pro](#)

[Configure the Deployed FindIT Network Manager](#)

Install FindIT Network Probe using any of the available virtual machines:

[VMware Fusion](#)

[VMware vSphere Client](#)

[VMware Workstation Pro](#)

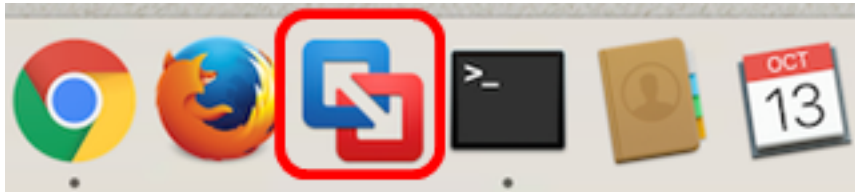
[Configure the Deployed FindIT Network Probe](#)

Install FindIT Network Manager using VMware Fusion

Follow these steps to deploy the OVA VM image to VMware Fusion.

Step 1. Download the FindIT Network Manager OVA VM image from the [Cisco Small Business Site](#).

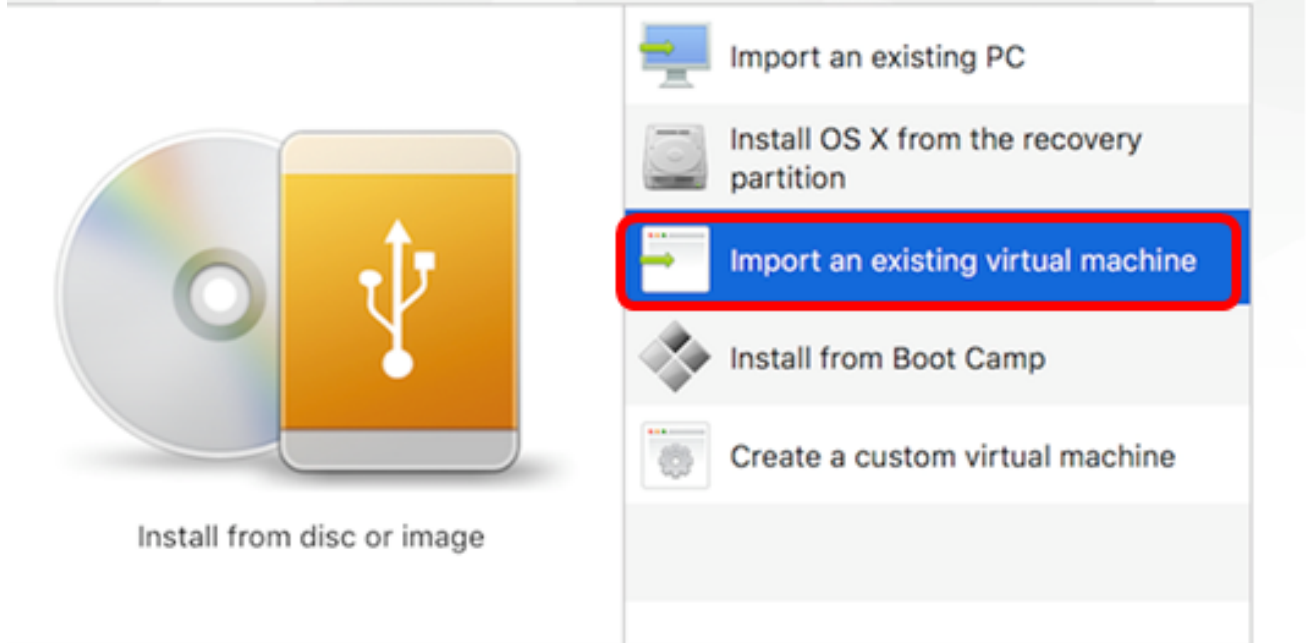
Step 2. Launch the VMware Fusion application on your server or computer.



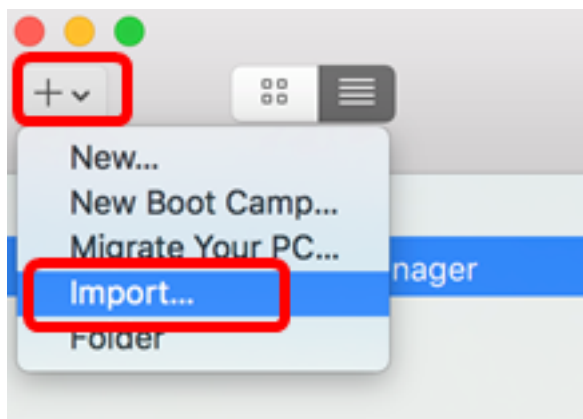
Note: In this example, Mac OS X El Capitan is used.

Step 3. Click **Import an existing virtual machine**, then click **Continue**.

Select the Installation Method



Note: Alternatively, you can click the **Add** button then click **Import**.



Step 4. Click **Choose File**.

Choose an Existing Virtual Machine

Recent items:





Choose File...

Cancel

Go Back

Continue

Step 5. Click the downloaded OVA image in Step 1, then click **Open**.

Name	Date Modified
 CentOS68-FindITManager-1.0.0.20160928.ova	Oct 4, 2016, 5:13 AM
 OpenWRT-FindITProbe-1.0.1.16301.ova	Oct 4, 2016, 2:36 AM

Cancel Open

Step 6. Click **Continue**.

Choose an Existing Virtual Machine

Recent items:



CentOS68-FindITManager-1.0.0.20160928

Size: Unknown

Type: Other

Show in Finder

Choose File...

Cancel

Go Back

Continue

Step 7. (Optional) Enter a name for the FindIT Network Manager.

Save As: FindIT Network Manager.vmwarevm

Tags:

Where: Virtual Machines

Share this virtual machine with other users on this Mac

Some features will be limited when sharing a virtual machine.
Sharing is only available when the virtual machine is saved in a shared folder.

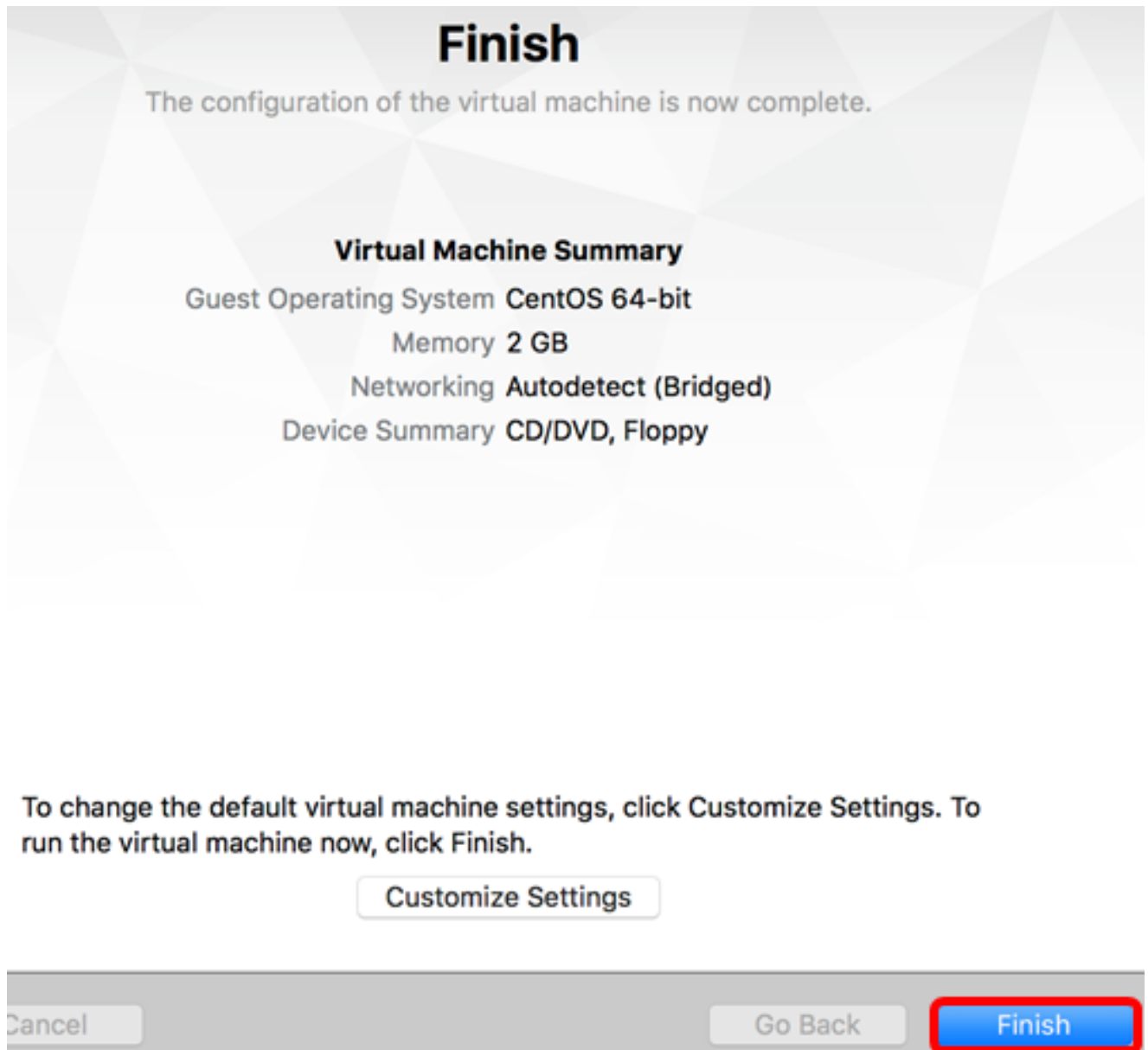
Cancel

Save

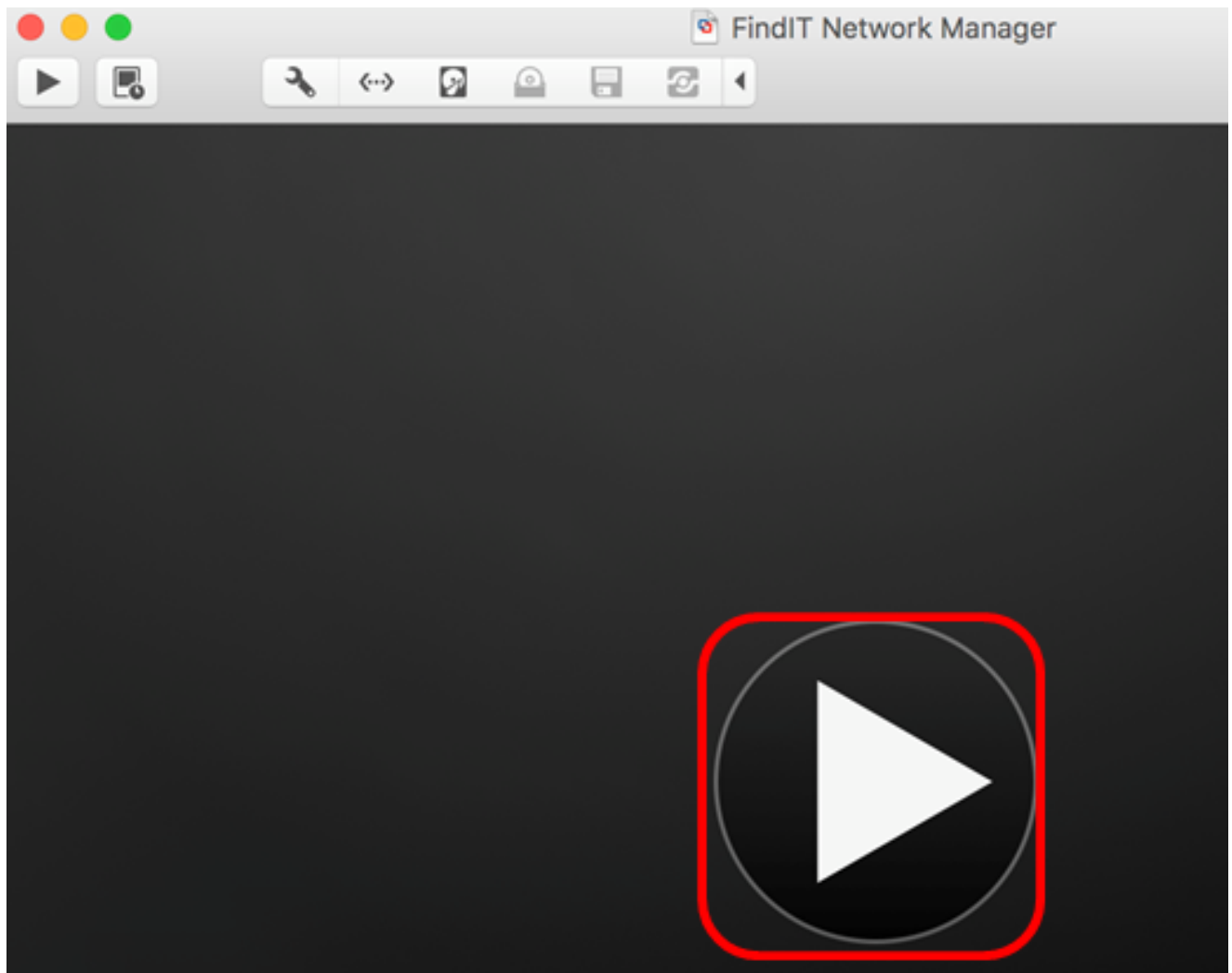
Note: In this example, FindIT Network Manager.vmwarevm is used.

Step 8. Click **Save**.

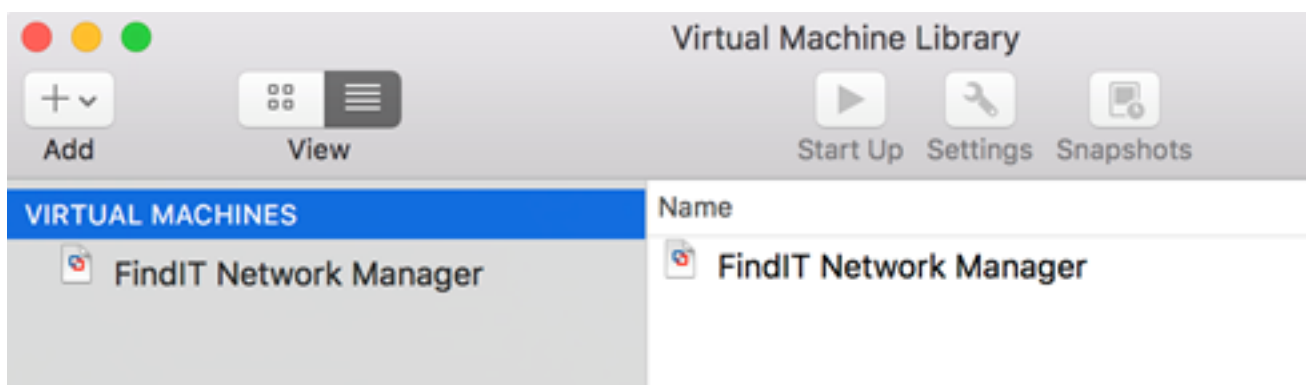
Step 9. Review the Virtual Machine Summary then click **Finish**.



Step 10. Once the deployed VM appears, click the **Play** button.



Note: Once the VMware has completed the deployment, the FindIT Network Manager will be displayed in the Virtual Machine Library under VIRTUAL MACHINES.



Step 11. Proceed to the [Configure the Deployed FindIT Network Manager](#) section to configure the deployed appliance.

[\[Back to Top\]](#)

[Install FindIT Network Manager using VMware vSphere Client](#)

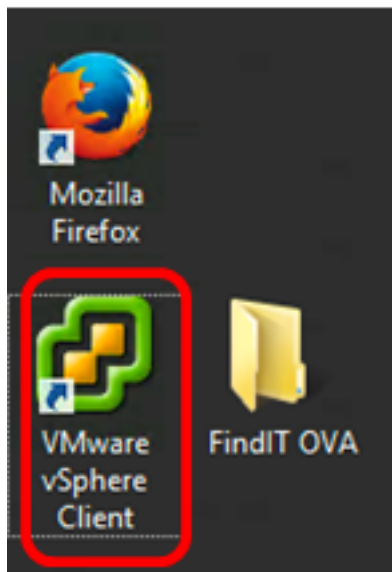
Follow these steps to deploy the OVA VM image to VMware vSphere Client.

Important: Before proceeding with the installation steps, make sure you have the following:

- vCenter or ESXi server credentials:
 - Name or IP address
 - User name
 - Password
- Pre-configured datastore in the server
- Pre-configured VM Network

Step 1. Download the FindIT Network Manager OVA VM image from the [Cisco Small Business Site](#).

Step 2. Launch the VMware vSphere Client on your server or computer.



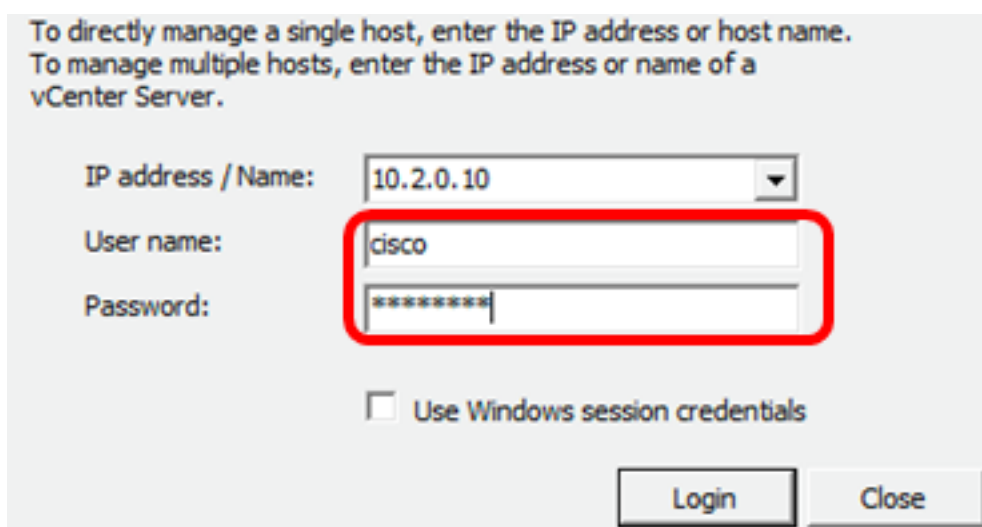
Note: In this example, Windows 2012 Server R2 operating system is used.

Step 3. Enter the vCenter or ESXi server name or IP address in the *IP address / Name* field.



Note: In this example, the ESXi server IP address of 10.2.0.10 is used.

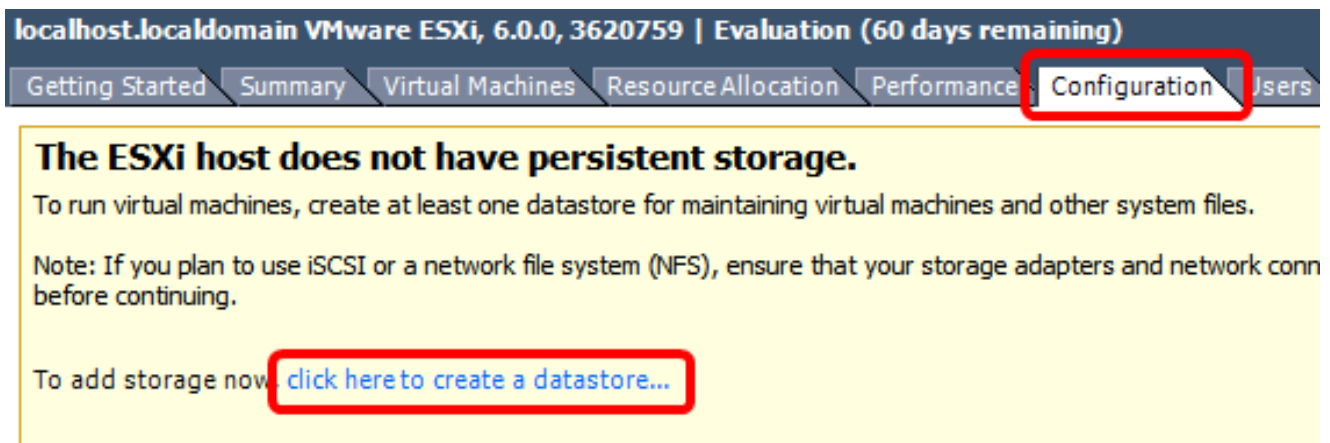
Step 4. Enter the user name and password of the server in the *User name* and *Password* fields.



Step 5. Click **Login**.

Step 6. (Optional) If a datastore has not been created in the server, add a new storage in the

Configuration tab.



localhost.localdomain VMware ESXi, 6.0.0, 3620759 | Evaluation (60 days remaining)

Getting Started Summary Virtual Machines Resource Allocation Performance **Configuration** Users

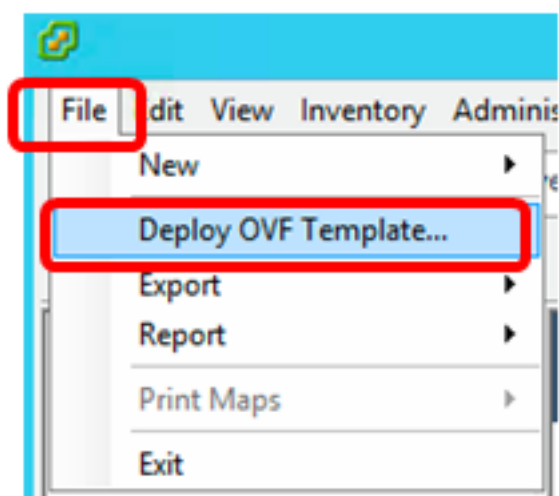
The ESXi host does not have persistent storage.

To run virtual machines, create at least one datastore for maintaining virtual machines and other system files.

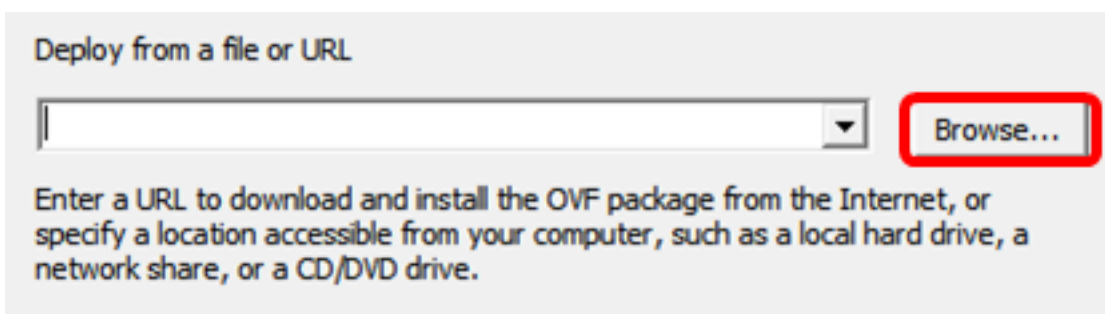
Note: If you plan to use iSCSI or a network file system (NFS), ensure that your storage adapters and network connections are configured before continuing.

To add storage now, [click here to create a datastore...](#)



Step 7. Click **File > Deploy OVF Template**.

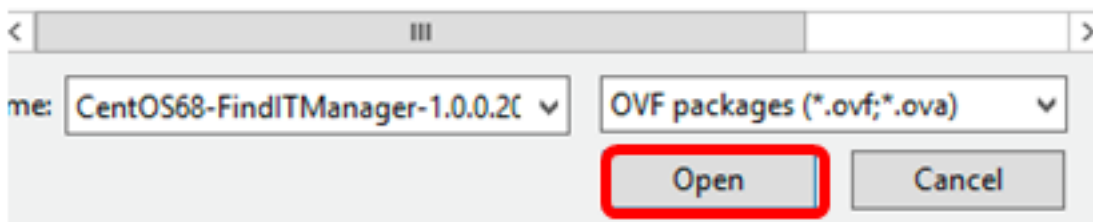


Step 8. Click **Browse**.



Step 9. Click the downloaded OVA image in Step 1, then click **Open**.

Name	Date modified	Type
 CentOS68-FindITManager-1.0.0.20161012...	10/18/2016 12:32 ...	OVA File
 OpenWRT-FindITProbe-1.0.1.16736	10/17/2016 11:56 ...	OVA File



Step 10. Click **Next** to continue.

Deploy from a file or URL

C:\Users\Administrator\Desktop\FindITOS686\CentOS68-Fin ▾

Browse...

Enter a URL to download and install the OVF package from the Internet, or specify a location accessible from your computer, such as a local hard drive, a network share, or a CD/DVD drive.

< Back

Next >

Cancel

Step 11. Click **Next**.

Product:	CentOS67_OM_Template
Version:	
Vendor:	
Publisher:	No certificate present
Download size:	1.2 GB
Size on disk:	2.1 GB (thin provisioned) 16.0 GB (thick provisioned)
Description:	

< Back **Next >** Cancel

Step 12. Enter a name for the FindIT Network Manager in the *Name* field, then click **Next**.

Name:

FindIT Network Manager

The name can contain up to 80 characters and it must be unique within the inventory folder.

< Back

Next >

Cancel

Note: In this example, FindIT Network Manager is used.

Step 13. Choose a destination storage for the FindIT Network Manager VM, then click **Next**.

Select a destination storage for the virtual machine files:

Name	Drive Type	Capacity	Provisioned	Free	Type
OSDataStore	Non-SSD	456.25 GB	974.00 MB	455.30 GB	VMFS5
Virtual Machine DataStore	Non-SSD	2.72 TB	105.13 GB	2.62 TB	VMFS5

Disable Storage DRS for this virtual machine

Select a datastore:

Name	Drive Type	Capacity	Provisioned	Free	Type	Thin Prov
------	------------	----------	-------------	------	------	-----------

< Back

Next >

Cancel

Note: In this example, Virtual Machine DataStore is chosen.

Step 14. Click a storage provision then click **Next**.

Datastore:

Available space (GB):

Thick Provision Lazy Zeroed

Thick Provision Eager Zeroed

Thin Provision

The options are:

- Thick Provision Lazy Zeroed — This option creates a virtual disk in a default thick format.
- Thick Provision Eager Zeroed — This creates a type of thick virtual disk that supports clustering features.
- Thin Provision — You can use this format to save storage space.

Note: In this example, Thick Provision Lazy Zeroed is chosen.

Step 15. Choose a network then click **Next**.

Map the networks used in this OVF template to networks in your inventory

Source Networks	Destination Networks
VM Network	VM Network

Description:

The VM Network network

< Back **Next >** Cancel

Note: In this example, VM Network is used.

Step 16. Review the configured settings.

When you click Finish, the deployment task will be started.

Deployment settings:

OVF file:	C:\Users\Administrator\Desktop\FindIT Beta 6\CentOS68-...
Download size:	1.2 GB
Size on disk:	16.0 GB
Name:	FindIT Network Manager
Host/Cluster:	localhost.router-mine.com
Datastore:	Virtual Machine DataStore
Disk provisioning:	Thick Provision Lazy Zeroed
Network Mapping:	"VM Network" to "VM Network"

Power on after deployment

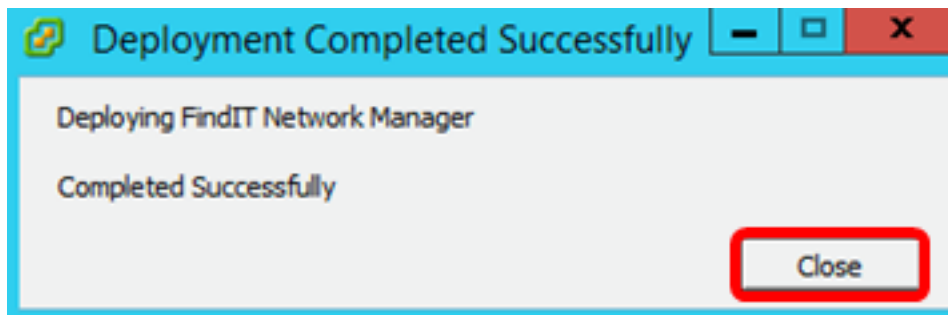
< Back Finish Cancel

Step 17. (Optional) Check the **Power on after deployment** check box to launch the VM after deployment.

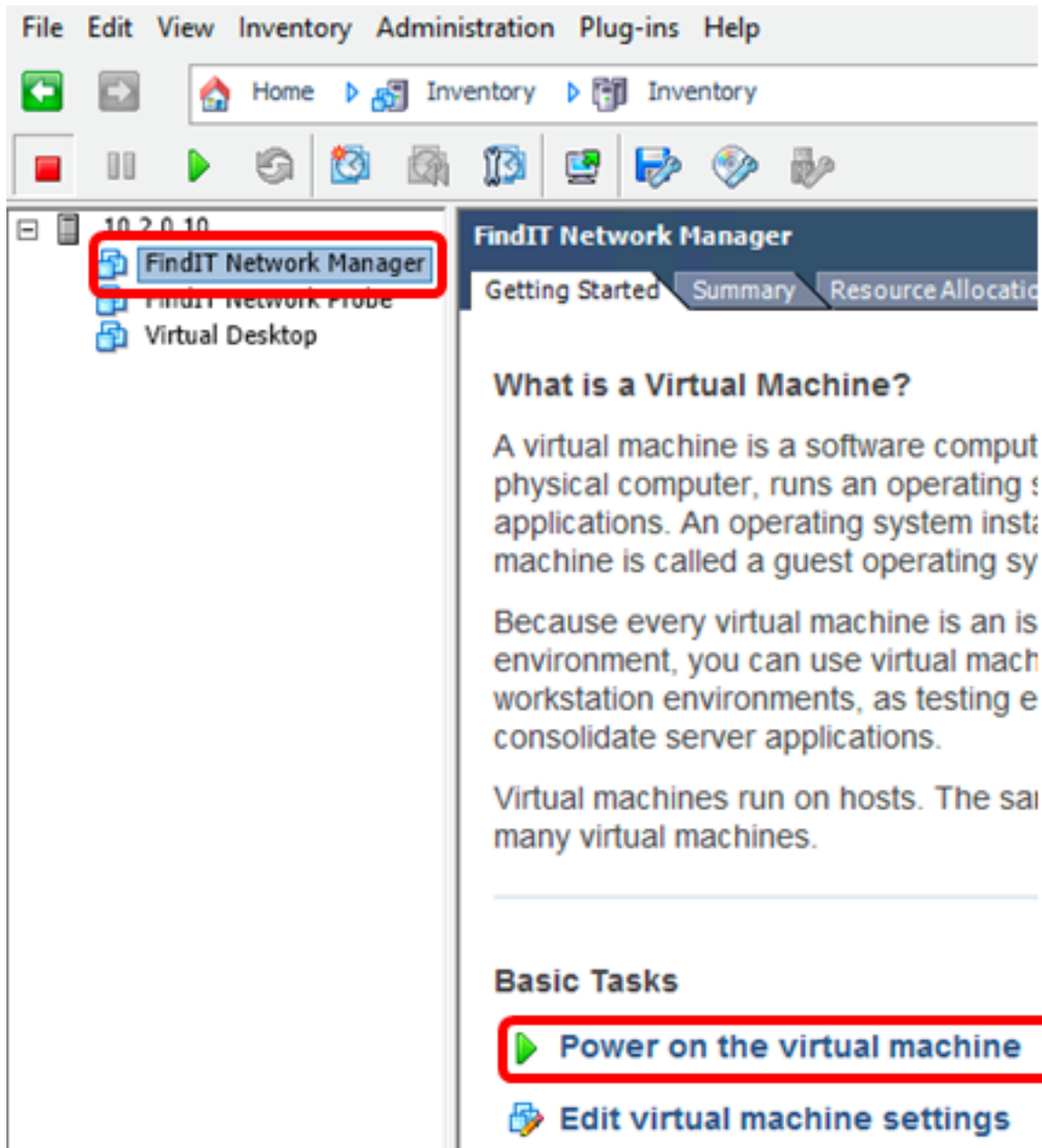
Power on after deployment

Step 18. Click **Finish** to complete the installation.

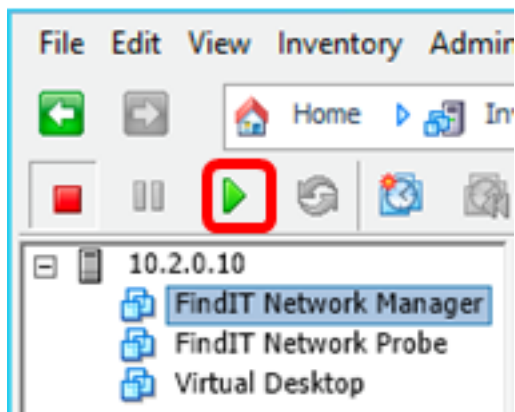
Step 19. Once deployment has been completed, click **Close**.



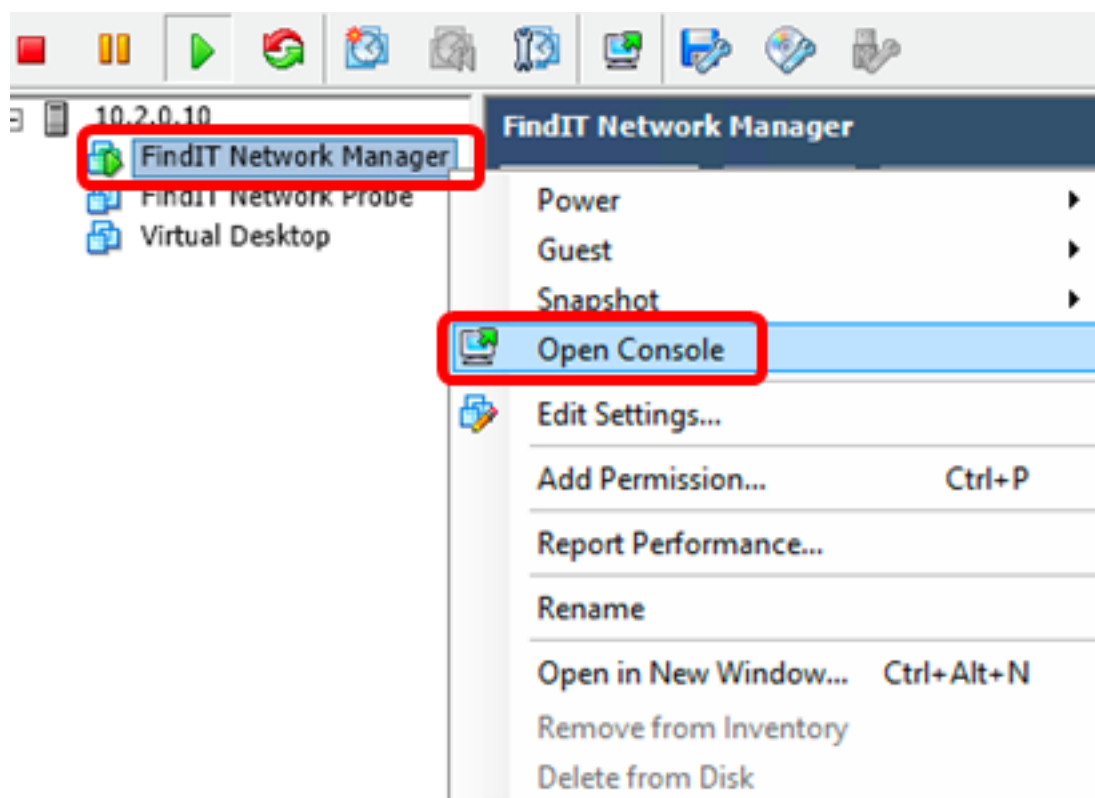
Step 20. Click the deployed VM then click **Power on the virtual machine**.



Note: Alternatively, you can click the **Play** button to power on the VM.



Step 21. (Optional) To access the console, right-click on the FindIT Network Manager VM then choose **Open Console**.



Step 22. Proceed to the [Configure the Deployed FindIT Network Manager](#) section to configure the deployed appliance.

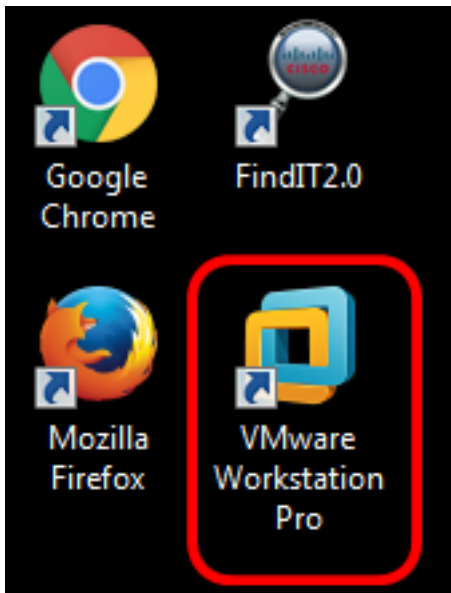
[\[Back to Top\]](#)

[Install FindIT Network Manager using VMware Workstation Pro](#)

Follow these steps to deploy the OVA VM image to VMware Workstation Pro.

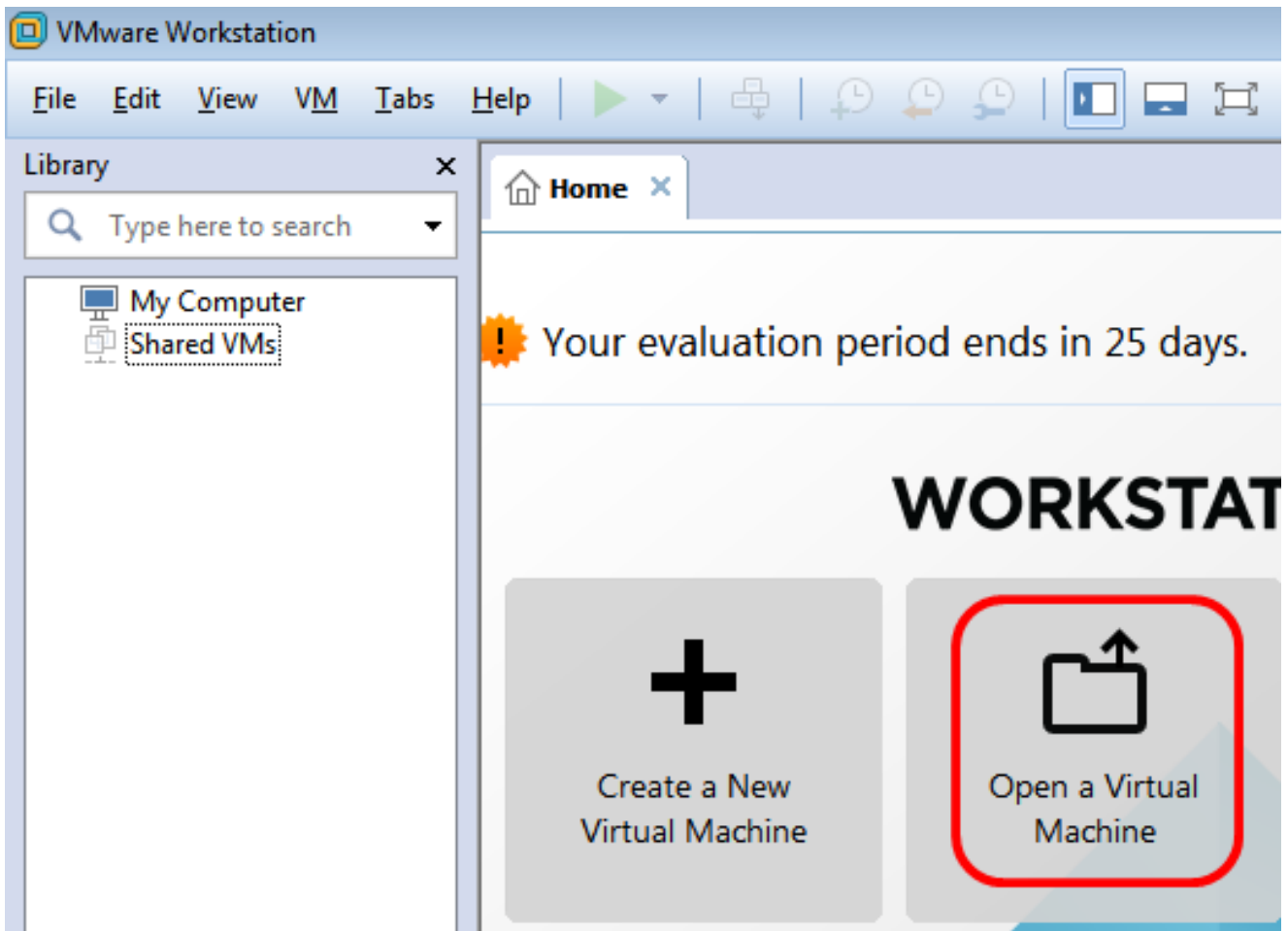
Step 1. Download the FindIT Network Manager OVA VM image from the [Cisco Small Business Site](#).

Step 2. Launch the VMware Workstation Pro application on your server or computer.

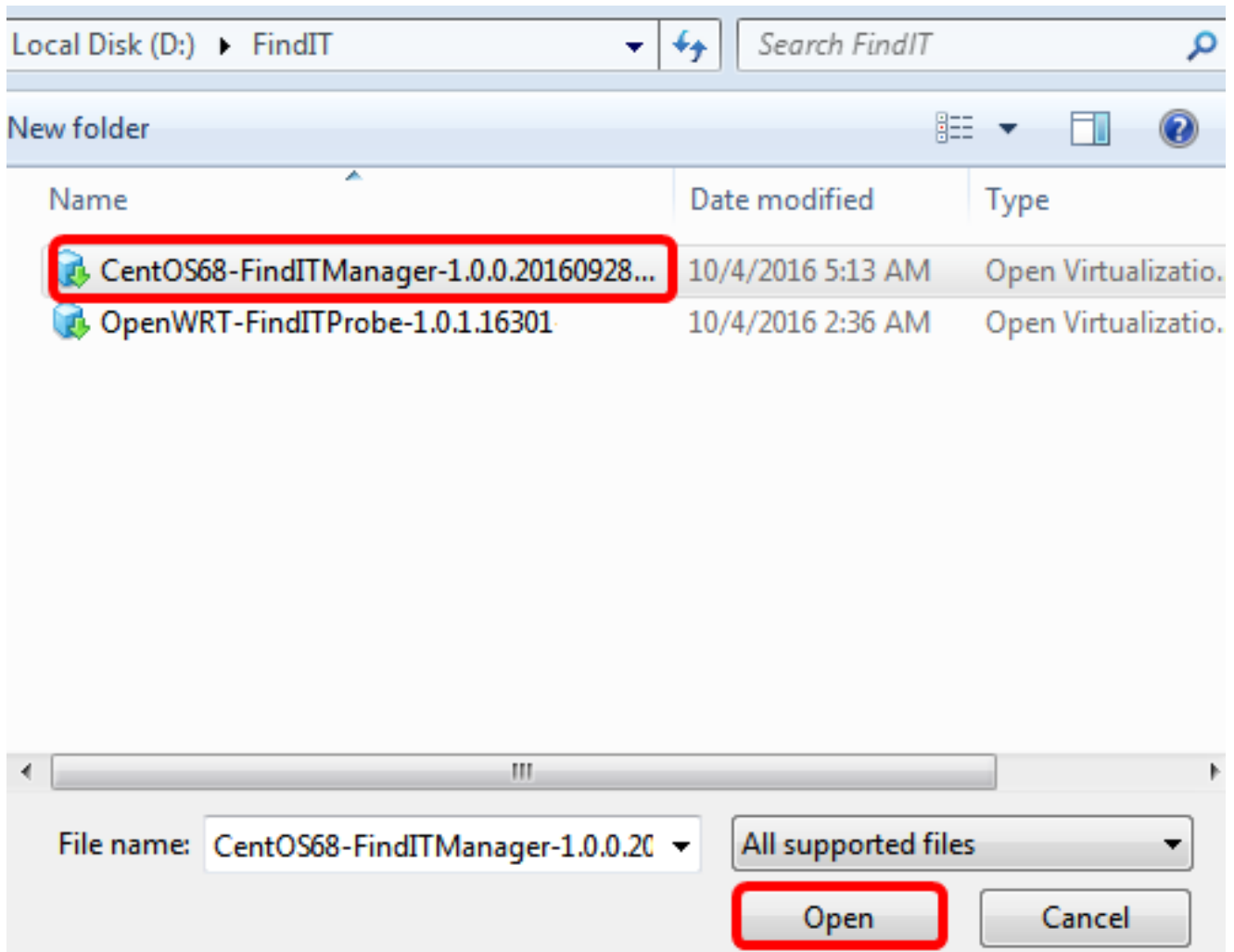


Note: In this example, Windows 8 operating system is used.

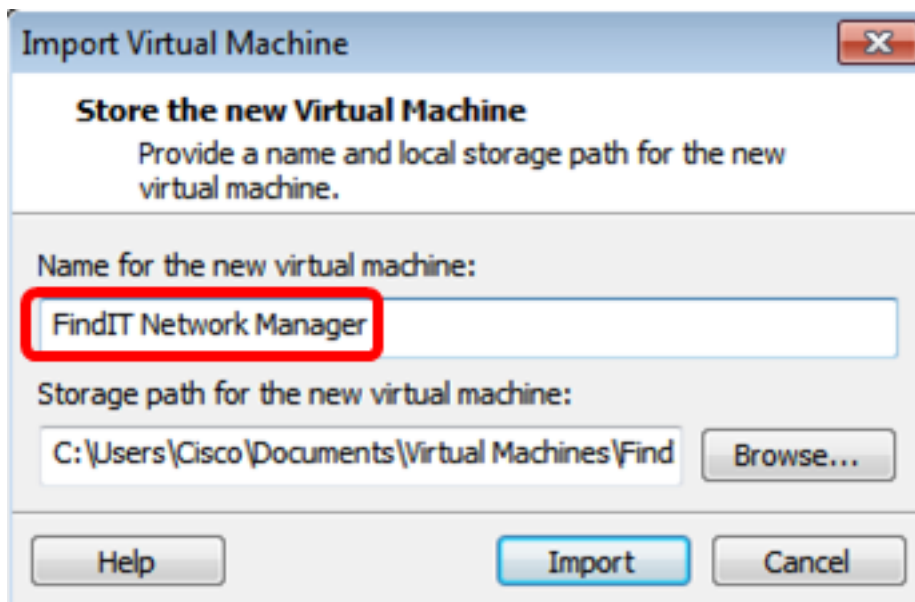
Step 3. Click **Open a Virtual Machine** from the Home tab.



Step 4. Click the downloaded OVA image in Step 1, then click **Open**.



Step 5. (Optional) Enter a name for the FindIT Network Manager.

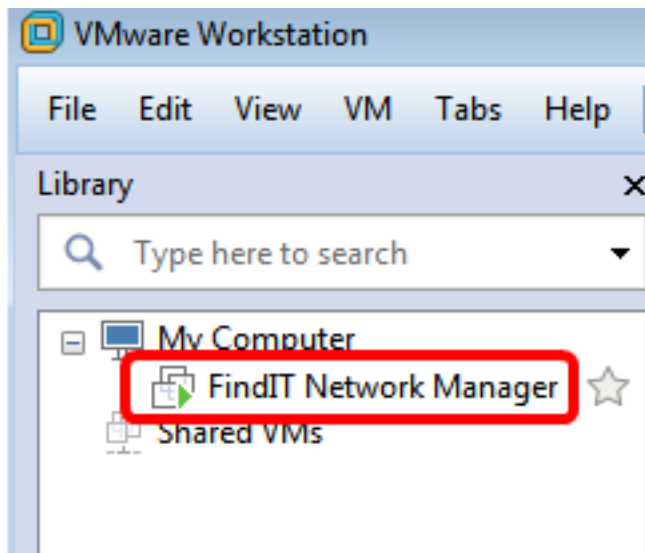


Note: In this example, FindIT Network Manager is used.

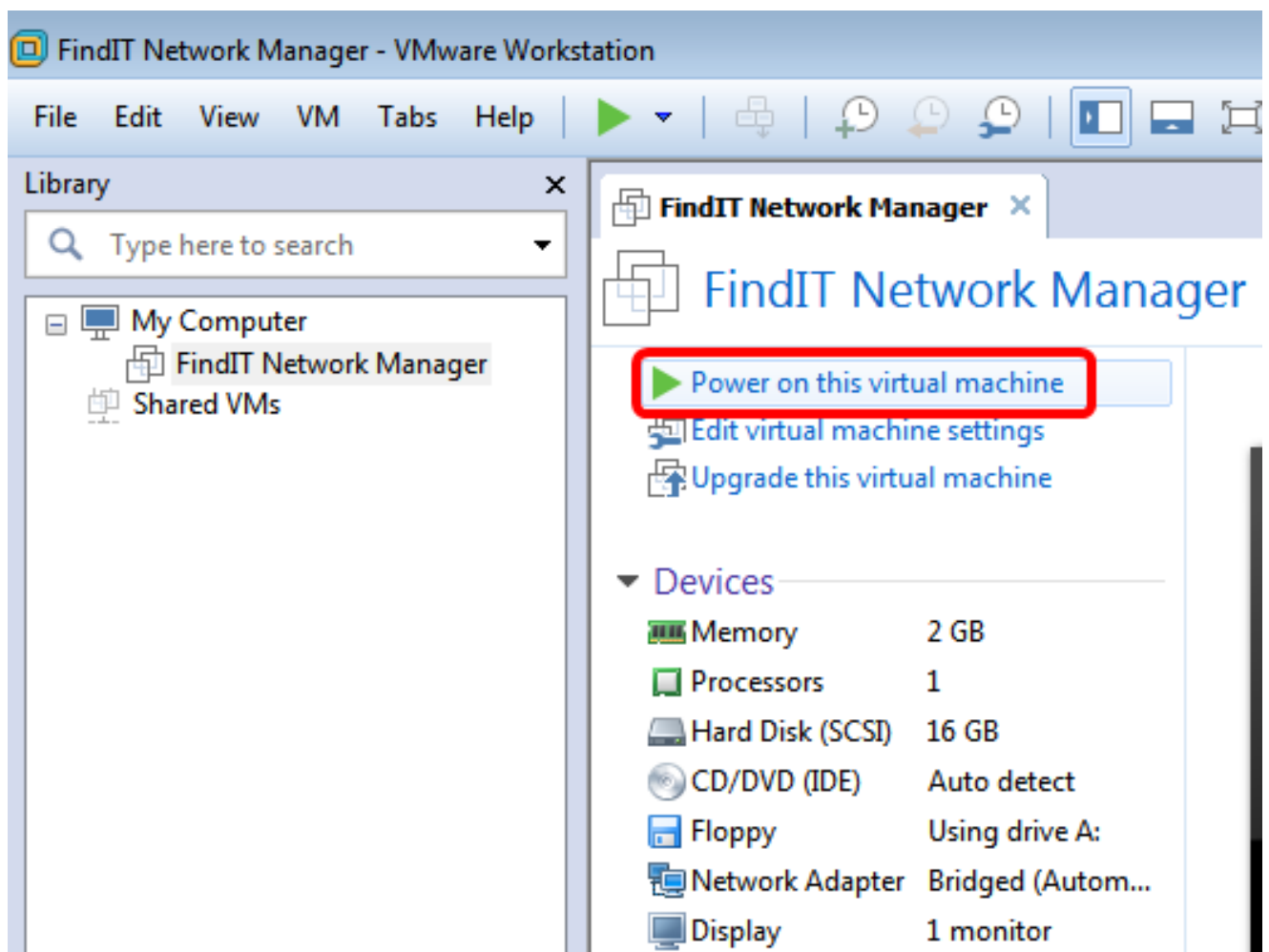
Step 6. Click **Import**.

Note: Once the VMware has completed the deployment, the FindIT Network Manager will be displayed in the Library under My Computer.

Step 7. On the left panel, click the deployed FindIT Network Manager appliance.



Step 8. Click **Power on this virtual machine** to access the console of the VM.



Step 9. Proceed to the [Configure the Deployed FindIT Network Manager](#) section to configure the deployed appliance.

[\[Back to Top\]](#)

[Configure the Deployed FindIT Network Manager](#)

Once deployment of the FindIT Network Manager is completed using your preferred virtual machine, follow the steps below to configure the VM.

Step 1. Access the console of the FindIT Network Manager VM.

Step 2. Log in to the console using the default username and password: cisco/cisco.

FindITManager login: **cisco**

Password: **cisco**

Step 3. Once you are prompted to change the password for the cisco account, enter the current password.

```
CentOS release 6.8 (Final)
Kernel 2.6.32-642.3.1.el6.x86_64 on an x86_64

FindITManager login: cisco
Password:
You are required to change your password immediately (root enforced)
Changing password for cisco.
(current) UNIX password:
```

Step 4. Enter and retype the new password for the cisco account.

```
CentOS release 6.8 (Final)
Kernel 2.6.32-642.3.1.el6.x86_64 on an x86_64

FindITManager login: cisco
Password:
You are required to change your password immediately (root enforced)
Changing password for cisco.
(current) UNIX password:
New password:
Retype new password: _
```

The DHCP IP Address and Administration GUI address will be displayed.

```
CentOS release 6.8 (Final)
Kernel 2.6.32-642.3.1.el6.x86_64 on an x86_64

FindITManager login: cisco
Password:
You are required to change your password immediately (root enforced)
Changing password for cisco.
(current) UNIX password:
New password:
Retype new password:

-----
FindIT Manager (1.0.0.20160928-beta)
Powered by CentOS release 6.8 (Final)

IP Address: 192.168.1.101      Administration GUI: https://192.168.1.101
Enter 'sudo config_vm' to change platform settings and set a static IP a
-----
[cisco@FindITManager ~]$ _
```

Note: In this example, the IP Address of FindIT Network Manager is 192.168.1.101 and the Administration GUI address is <https://192.168.1.101>.

Step 5. Enter the **sudo config_vm** command to start the initial setup wizard.

```
[cisco@FindITManager cisco]$ sudo config_vm
```

Step 6. Enter the password for sudo. The default password is cisco. If you changed it, enter the new password.

```
[cisco@FindITManager ~]$ cd /opt/cisco
[cisco@FindITManager cisco]$ sudo config_vm
[sudo] password for cisco:
```

Step 7. Enter **y** for Yes or **n** for No in the setup wizard to configure the Hostname, Network, NTP server, and Time Zone.

```
Config a hostname ? (y/n) : y
```

Step 8. (Optional) If DHCP is specified when configuring network, enter the **ifconfig** command to check the assigned IP address and remember it. A static IP can also be configured.

```
[cisco@FindITManager cisco]$ ifconfig
```

You should now have completed the FindIT Network Manager installation on your VM.

To learn how to access and configure the initial settings of the FindIT Network Manager, click [here](#) for instructions.

[\[Back to Top\]](#)

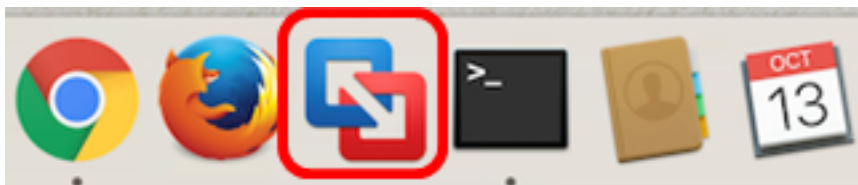
Install FindIT Network Probe

[Install FindIT Network Probe using VMware Fusion](#)

Follow these steps to deploy the OVA VM image to VMware Fusion.

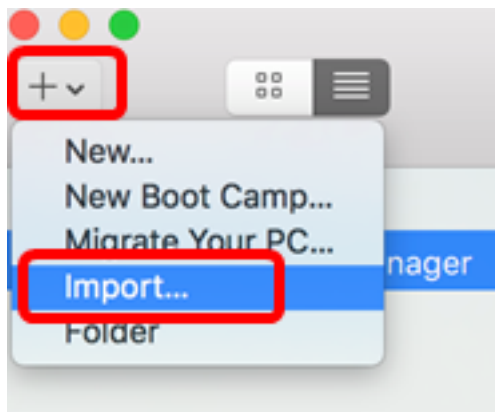
Step 1. Download the FindIT Network Probe OVA VM image from the [Cisco Small Business Site](#).

Step 2. Launch the VMware Fusion application on your server or computer.



Note: In this example, Mac OS X El Capitan is used.

Step 3. Click the **Add** button then click **Import**.



Step 4. Click **Choose File**.

Choose an Existing Virtual Machine

Recent items:



CentOS68-FindITManager-1.0.0.20160928

Size: Unknown

Type: Other

Show in Finder

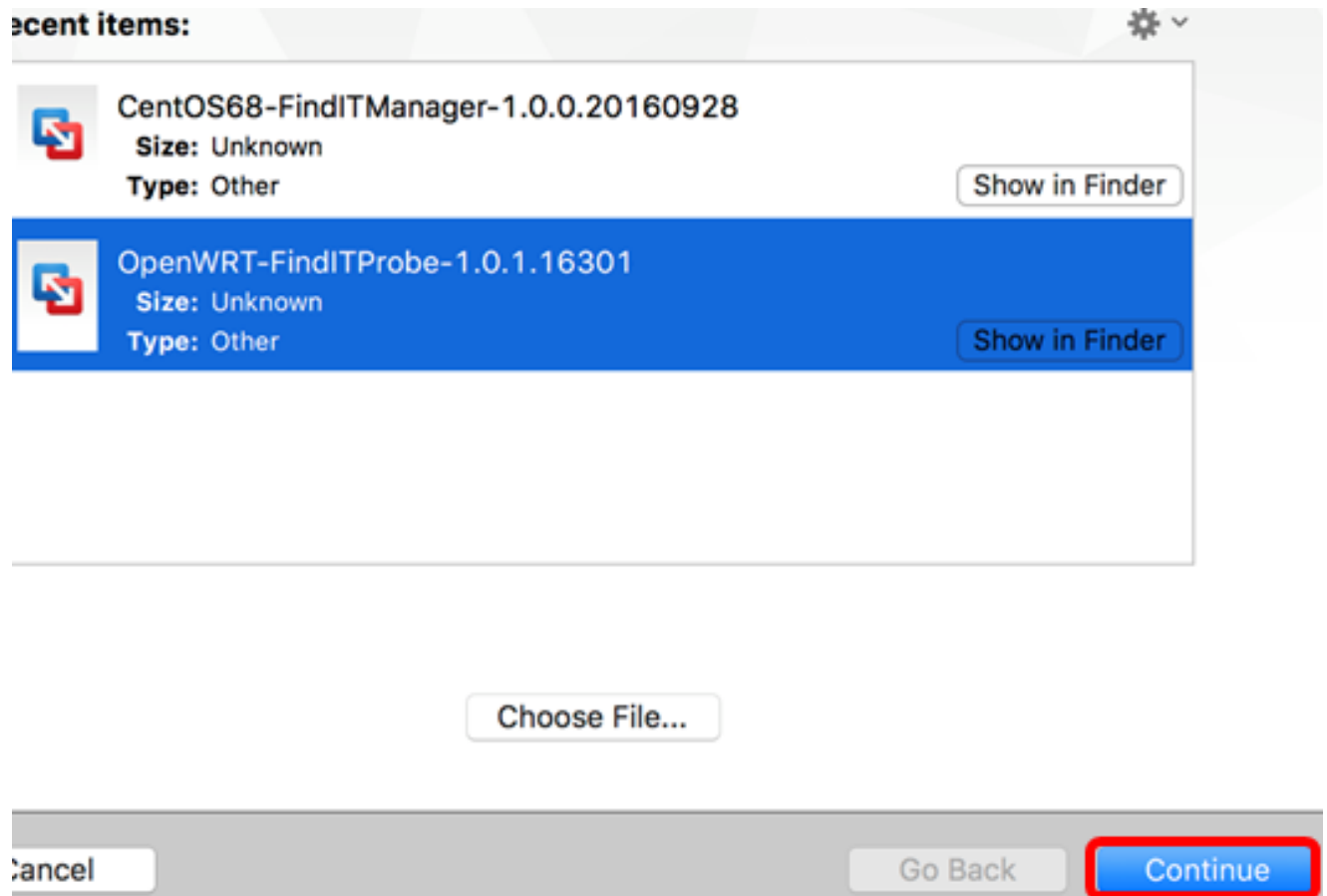
Choose File...

Cancel

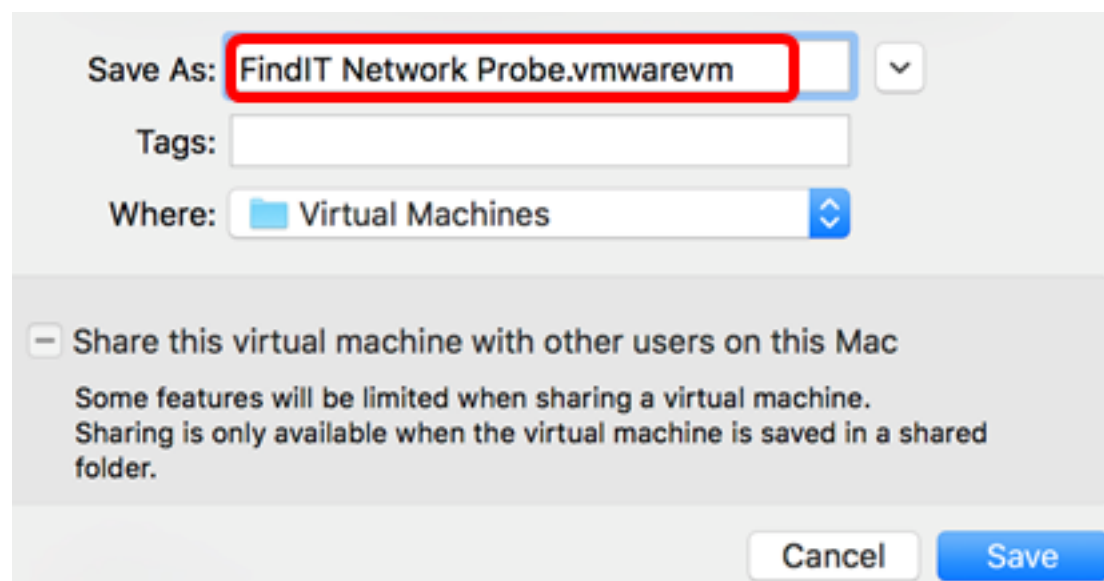
Go Back

Continue

Step 5. Click the downloaded OVA image in Step 1, then click **Open**.



Step 7. (Optional) Enter a name for the FindIT Network Probe.



Note: In this example, FindIT Network Probe.vmwarevm is used.

Step 8. Click **Save**.

Step 9. Review the Virtual Machine Summary then click **Finish**. The deployed VM will automatically start.

Finish

The configuration of the virtual machine is now complete.

Virtual Machine Summary

Guest Operating System Other Linux 64-bit

Memory 512 MB

Networking Autodetect (Bridged)

Device Summary None

To change the default virtual machine settings, click **Customize Settings**. To run the virtual machine now, click **Finish**.

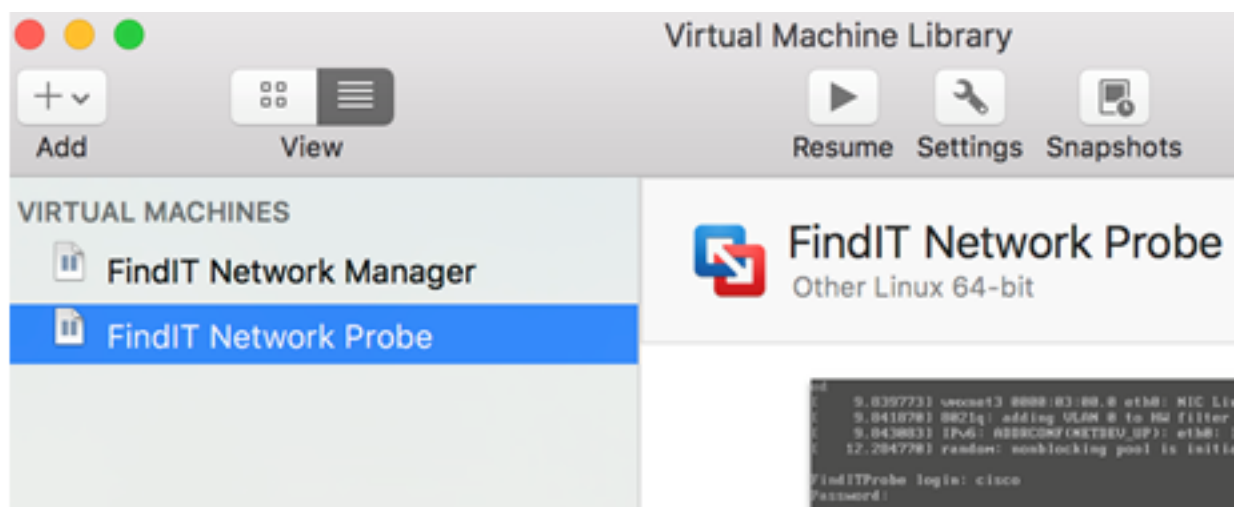
Customize Settings

Cancel

Go Back

Finish

Note: Once the VMware has completed the deployment, the FindIT Network Probe will be displayed in the Virtual Machine Library under VIRTUAL MACHINES.



Step 9. Proceed to the [Configure the Deployed FindIT Network Probe](#) section to configure the deployed appliance.

[\[Back to Top\]](#)

[Install FindIT Network Probe using VMware vSphere Client](#)

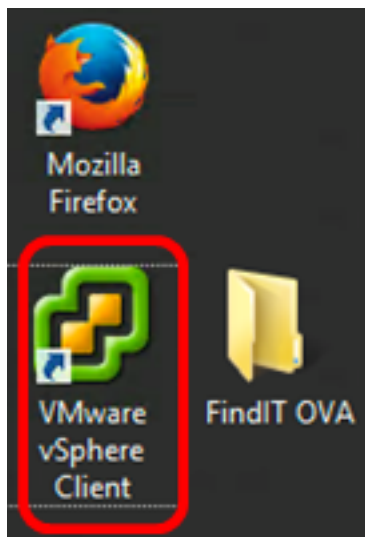
Follow these steps to deploy the OVA VM image to VMware vSphere Client.

Important: Before proceeding with the installation steps, make sure you have the following:

- vCenter or ESXi server credentials:
 - Name or IP address
 - User name
 - Password
- Pre-configured datastore in the server
- Pre-configured VM Network

Step 1. Download the FindIT Network Probe OVA VM image from the [Cisco Small Business Site](#).

Step 2. Launch the VMware vSphere Client on your server or computer.



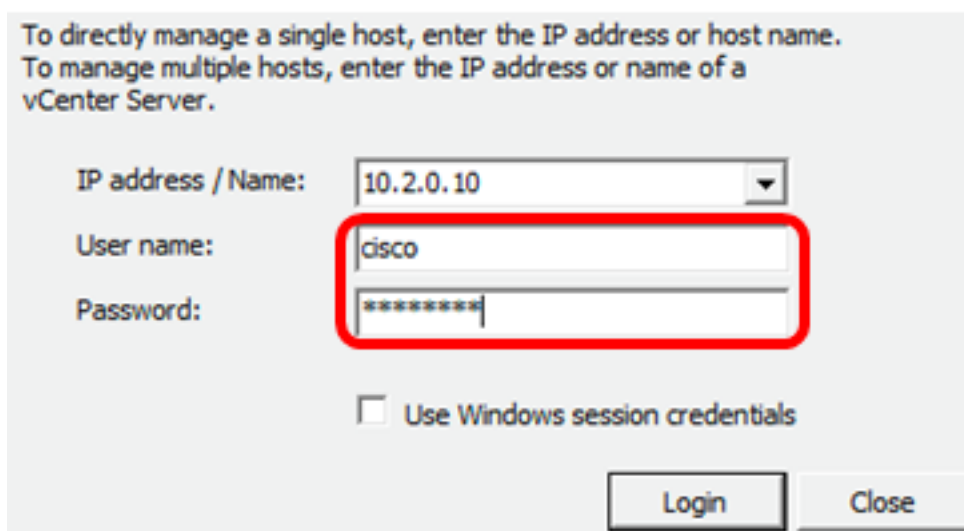
Note: In this example, Windows 2012 Server R2 operating system is used.

Step 3. Enter the vCenter or ESXi server name or IP address in the *IP address / Name* field.



Note: In this example, the ESXi server IP address 10.2.0.10 is used.

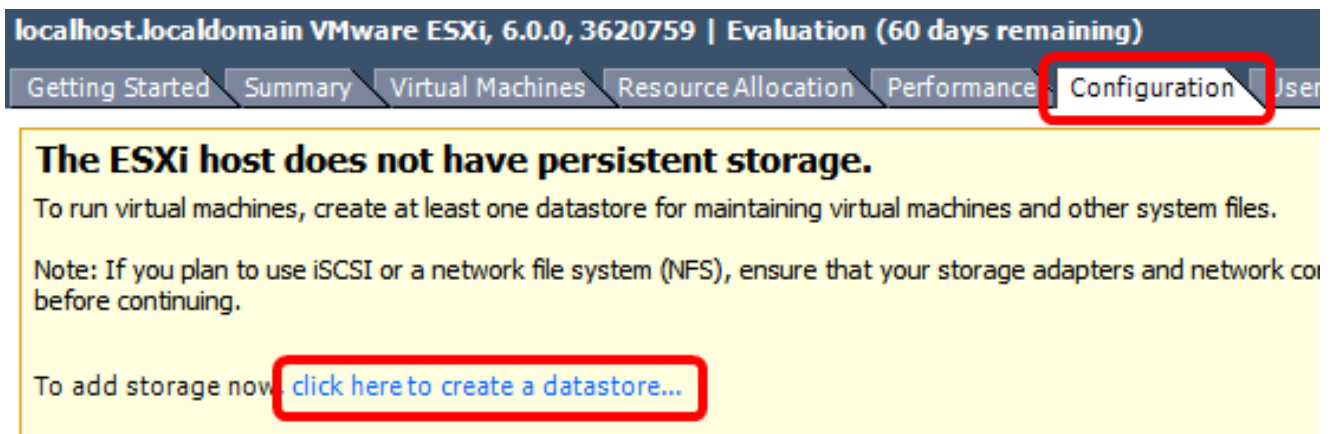
Step 4. Enter the user name and password of the server in the *User name* and *Password* fields.



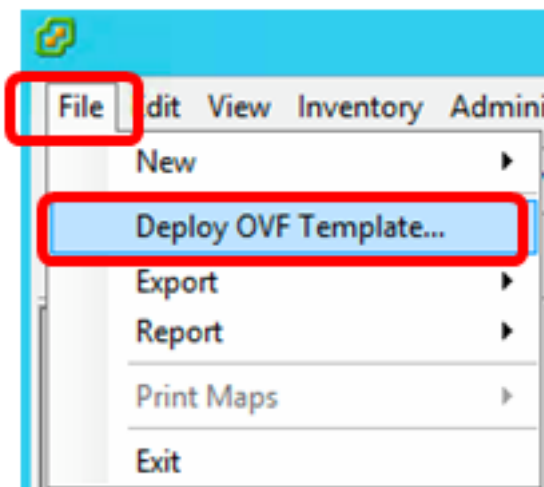
Step 5. Click **Login**.

Step 6. (Optional) If a datastore has not been created in the server, add a new storage in the

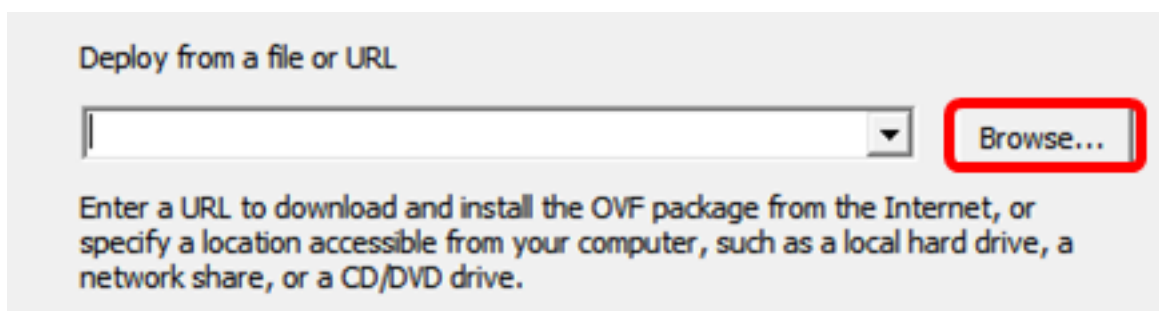
Configuration tab.



Step 7. Click **File > Deploy OVF Template**.

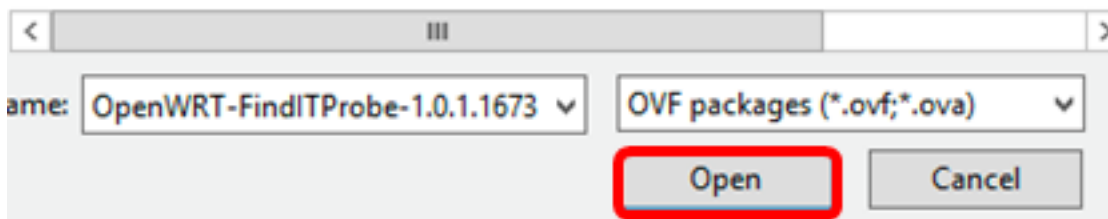


Step 8. Click **Browse**.



Step 9. Click the downloaded OVA image in Step 1, then click **Open**.

Name	Date modified	Type
CentOS68-FindITManager-1.0.0.20161012...	10/18/2016 12:32 ...	OVA File
OpenWRT-FindITProbe-1.0.1.16736	10/17/2016 11:56 ...	OVA File



Step 10. Click **Next** to continue.

Deploy from a file or URL

C:\Users\Administrator\Downloads\OpenWRT-FindITProbe-1 ▾

Browse...

Enter a URL to download and install the OVF package from the Internet, or specify a location accessible from your computer, such as a local hard drive, a network share, or a CD/DVD drive.

< Back

Next >

Cancel

Step 11. Click **Next** again.

Product:	OA4Dev1
Version:	
Vendor:	
Publisher:	No certificate present
Download size:	95.4 MB
Size on disk:	258.6 MB (thin provisioned) 1.0 GB (thick provisioned)
Description:	

< Back **Next >** Cancel

Step 12. Enter a name for the FindIT Network Probe in the *Name* field, then click **Next**.

Name:

FindIT Network Probe

The name can contain up to 80 characters and it must be unique within the inventory folder.

< Back

Next >

Cancel

Note: In this example, FindIT Network Probe is used.

Step 13. Choose a destination storage for the FindIT Network Probe VM, then click **Next**.

Select a destination storage for the virtual machine files:

Name	Drive Type	Capacity	Provisioned	Free	Type
OS DataStore	Non-SSD	456.25 GB	974.00 MB	455.30 GB	VMFS5
Virtual Machine DataStore	Non-SSD	2.72 TB	105.13 GB	2.62 TB	VMFS5

Disable Storage DRS for this virtual machine

Select a datastore:

Name	Drive Type	Capacity	Provisioned	Free	Type	Thin Prov
------	------------	----------	-------------	------	------	-----------

< Back

Next >

Cancel

Note: In this example, Virtual Machine DataStore is chosen.

Step 14. Click a storage provision then click **Next**.

Datastore:

Available space (GB):

Thick Provision Lazy Zeroed

Thick Provision Eager Zeroed

Thin Provision

The options are:

- Thick Provision Lazy Zeroed — This option creates a virtual disk in a default thick format.
- Thick Provision Eager Zeroed — This creates a type of thick virtual disk that supports clustering features.
- Thin Provision — You can use this format to save storage space.

Note: In this example, Thick Provision Lazy Zeroed is chosen.

Step 15. Choose a network then click **Next**.

Map the networks used in this OVF template to networks in your inventory

Source Networks	Destination Networks
VM Network	VM Network

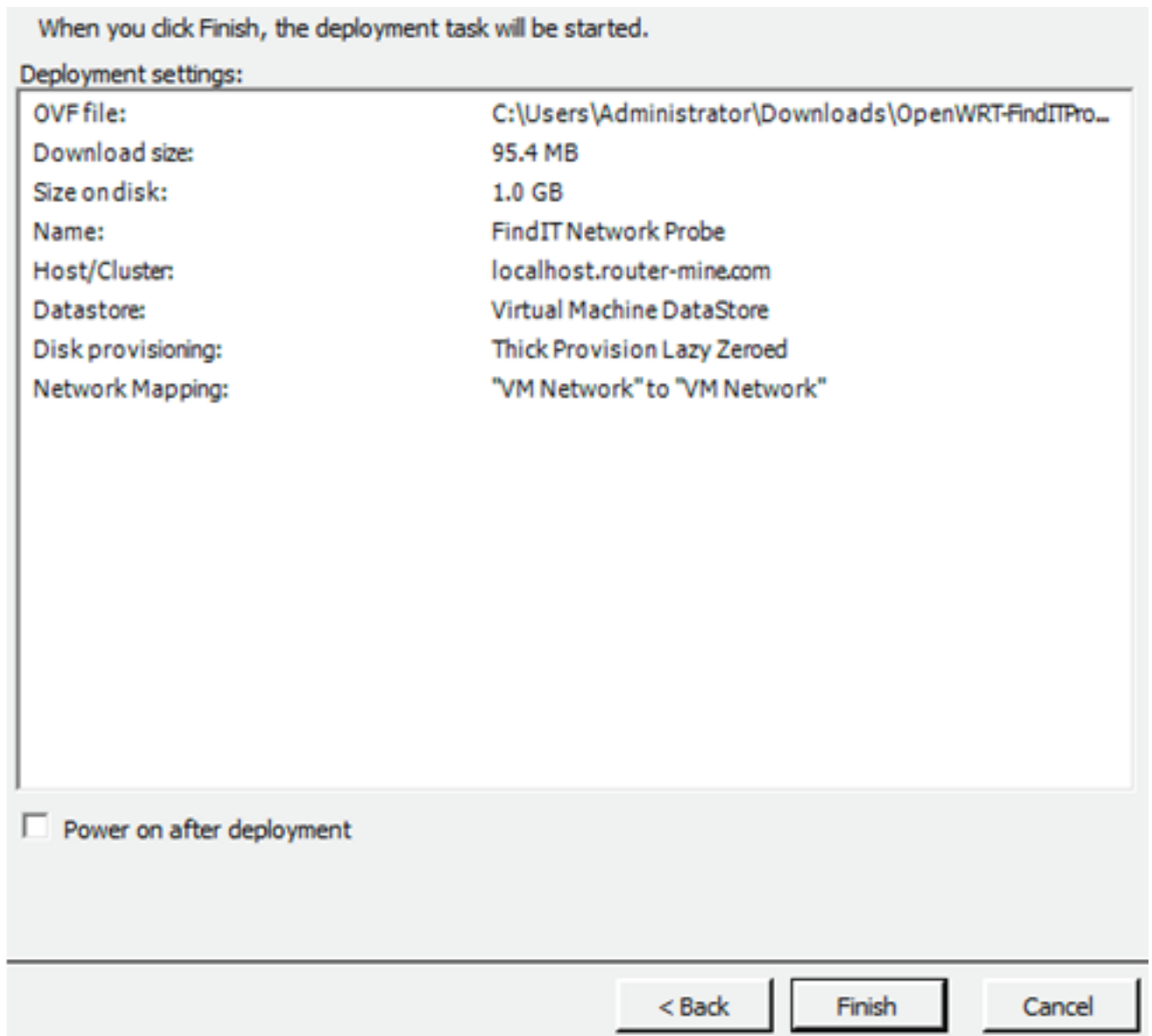
Description:

The VM Network network

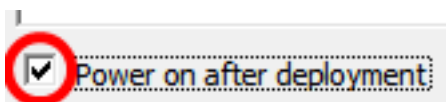
< Back **Next >** Cancel

Note: In this example, VM Network is chosen.

Step 16. Review the configured settings.

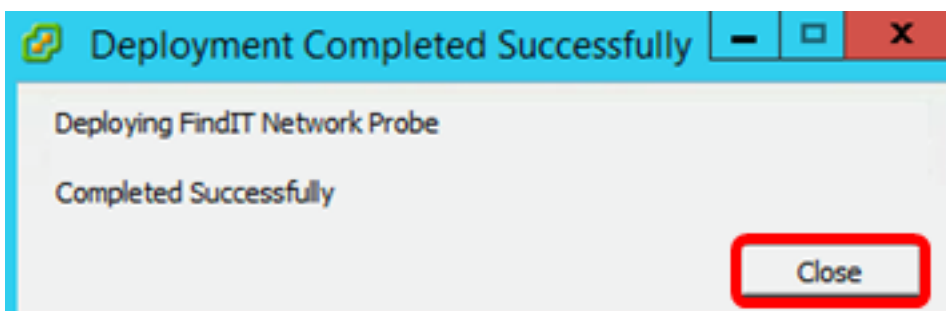


Step 17. (Optional) Check the **Power on after deployment** check box to launch the VM after deployment.

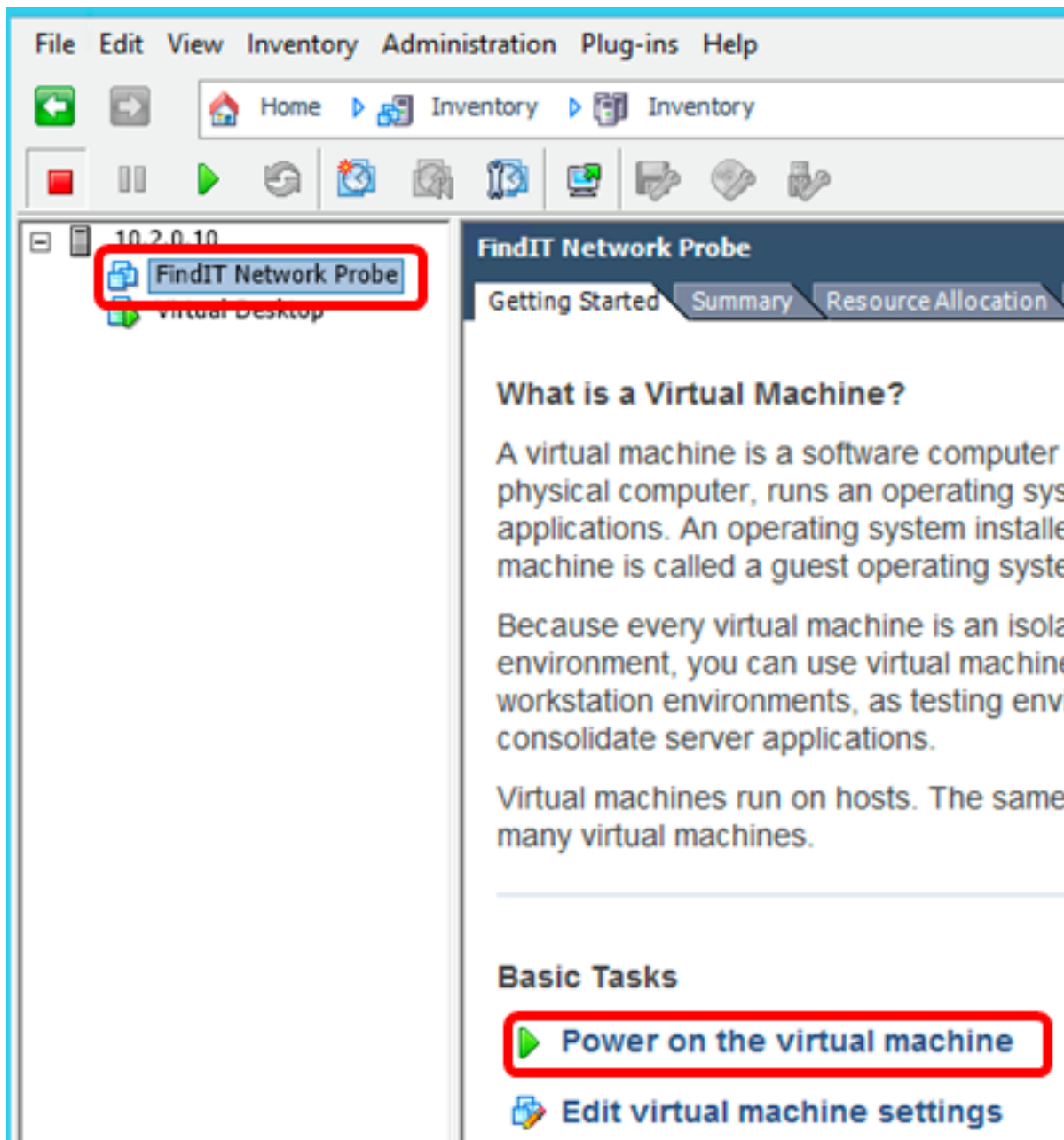


Step 18. Click **Finish** to complete the deployment.

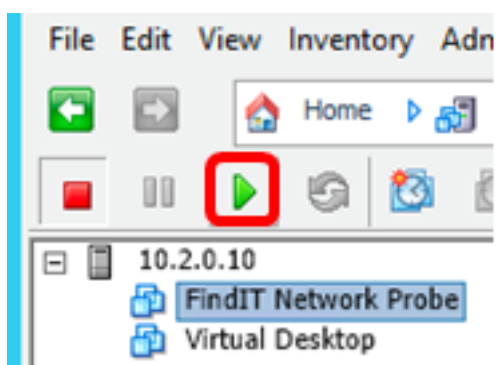
Step 19. Once deployment has been completed, click **Close**.



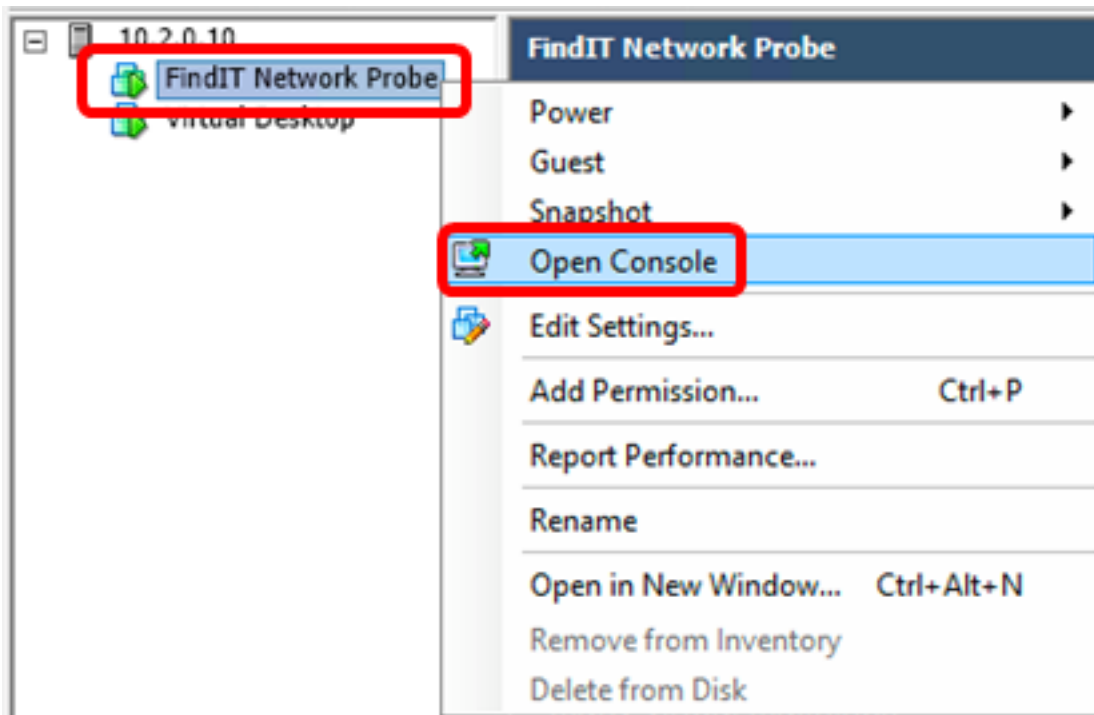
Step 20. Click the deployed VM then click **Power on the virtual machine**.



Note: Alternatively, you can click the **Play** button to power on the VM.



Step 21. (Optional) To access the console, right-click on the FindIT Network Probe VM, then choose **Open Console**.



Step 22. Proceed to the [Configure the Deployed FindIT Network Probe](#) section to configure the deployed appliance.

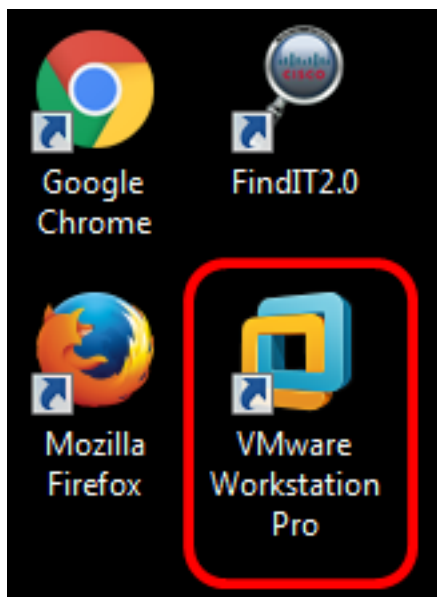
[\[Back to Top\]](#)

[Install FindIT Network Probe using VMware Workstation Pro](#)

Follow these steps to deploy the OVA VM image to VMware Workstation Pro.

Step 1. Download the FindIT Network Probe OVA VM image from the [Cisco Small Business Site](#).

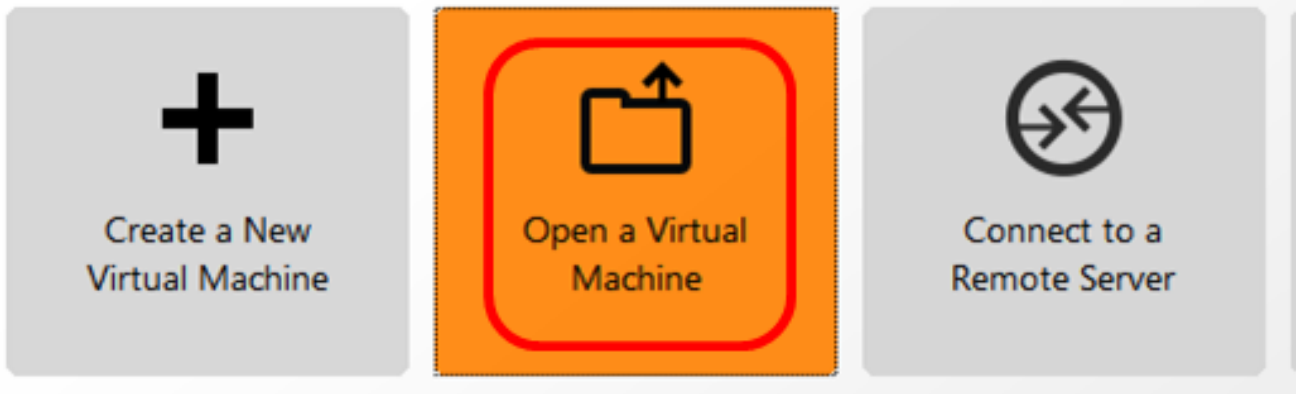
Step 2. Launch the VMware Workstation Pro application on your server or computer.



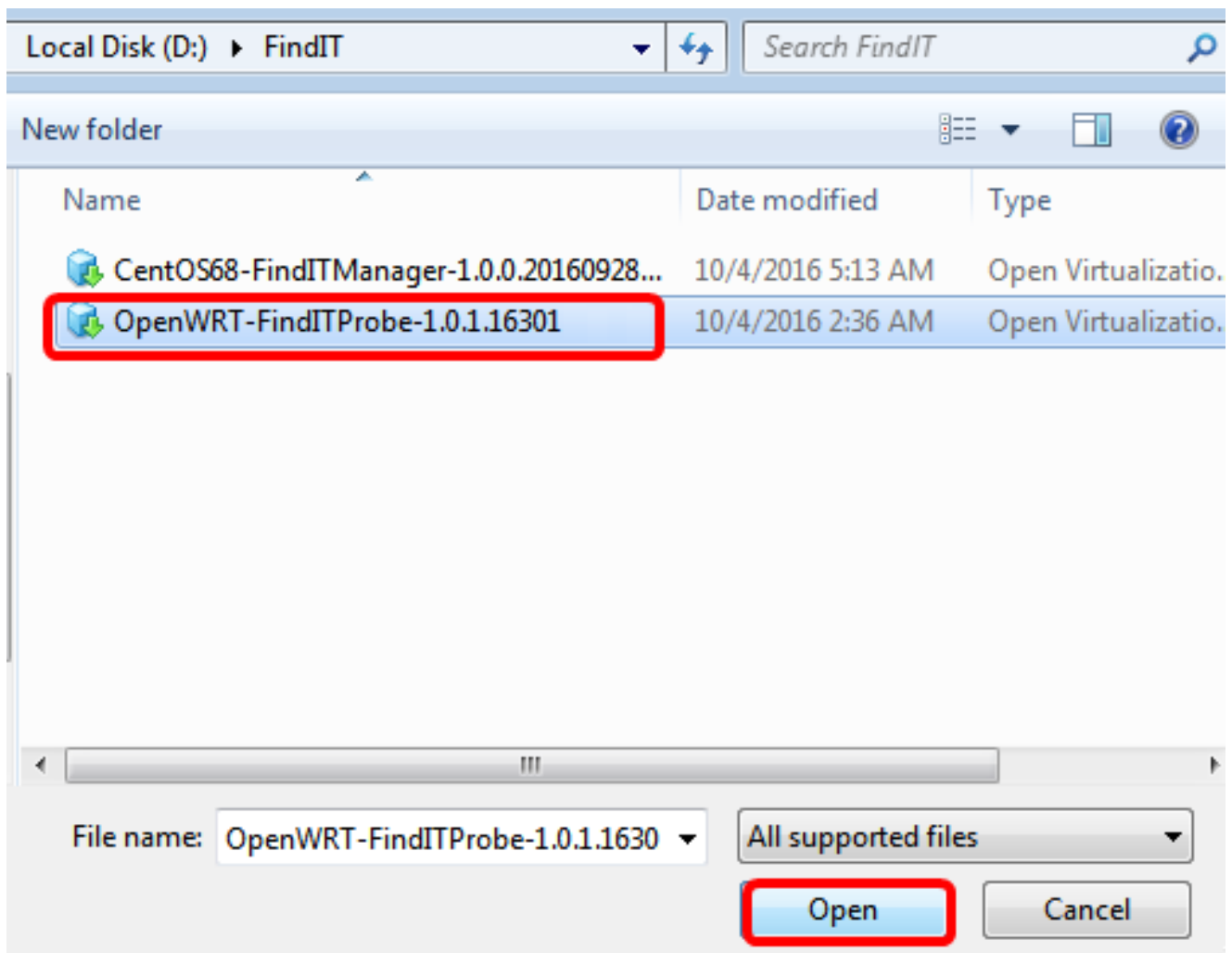
Note: In this example, Windows 8 operating system is used.

Step 3. Click **Open a Virtual Machine** from the Home tab.

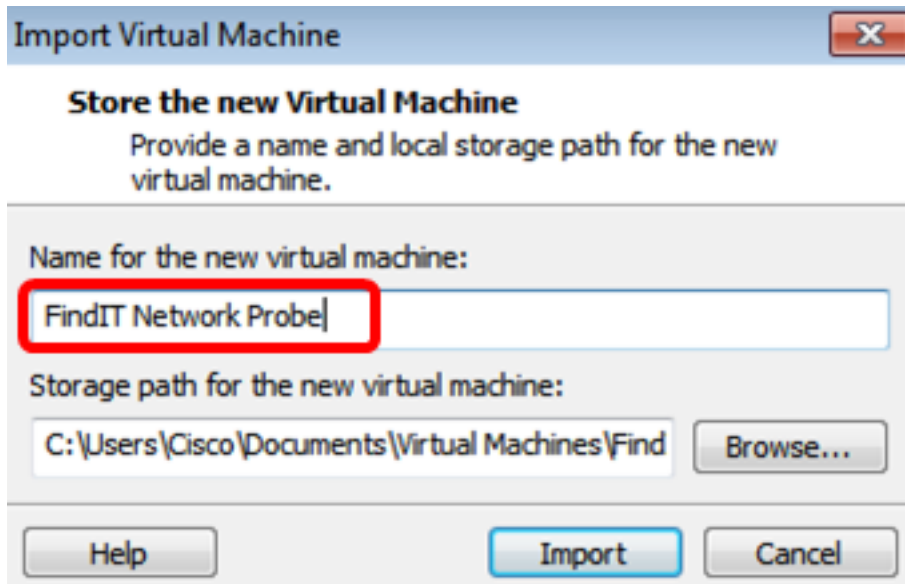
WORKSTATION™ 12 PRO



Step 4. Click the downloaded OVA image in Step 1, then click **Open**.



Step 5. (Optional) Enter a name for the FindIT Network Probe.

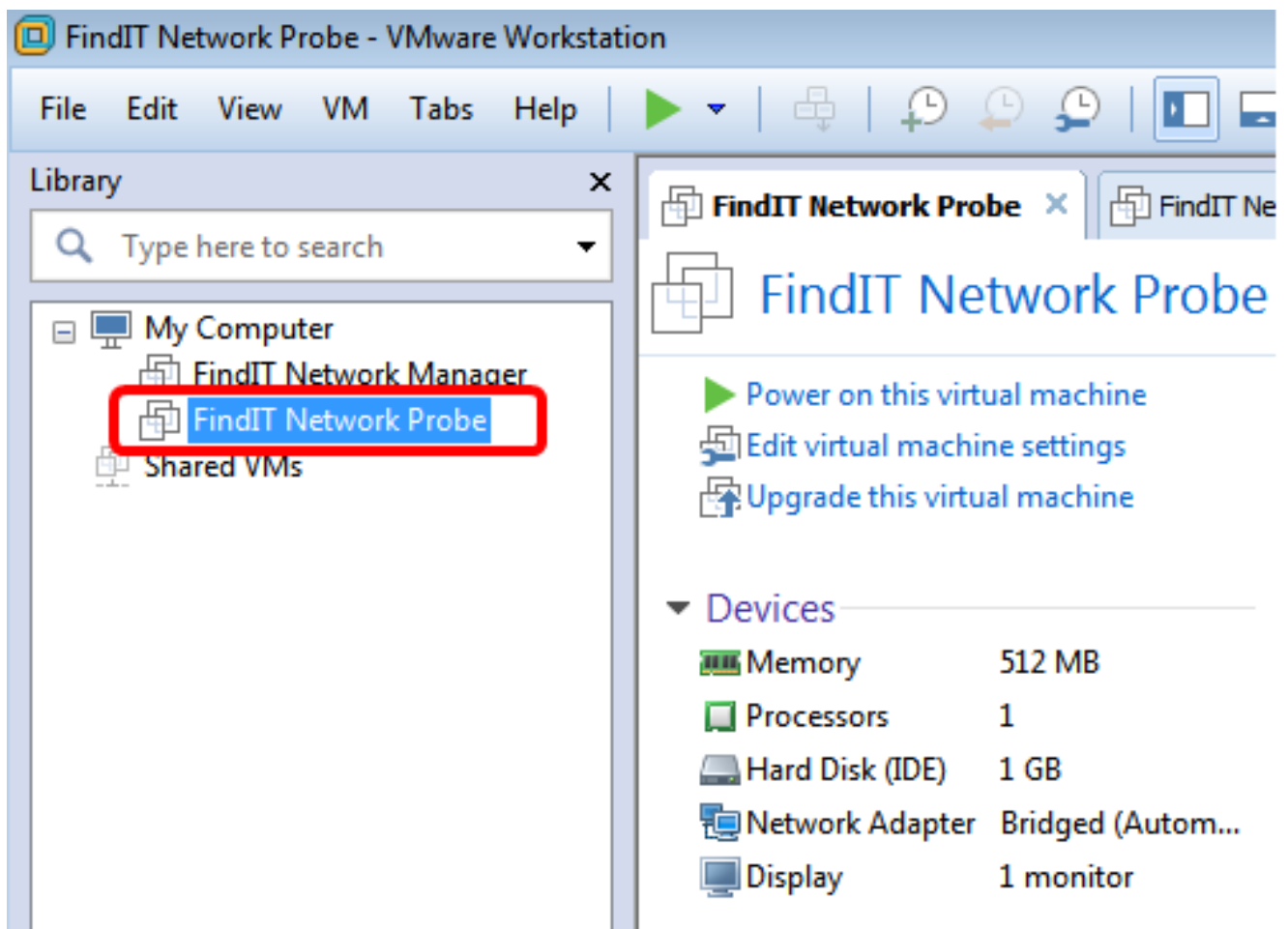


Note: In this example, FindIT Network Probe is used.

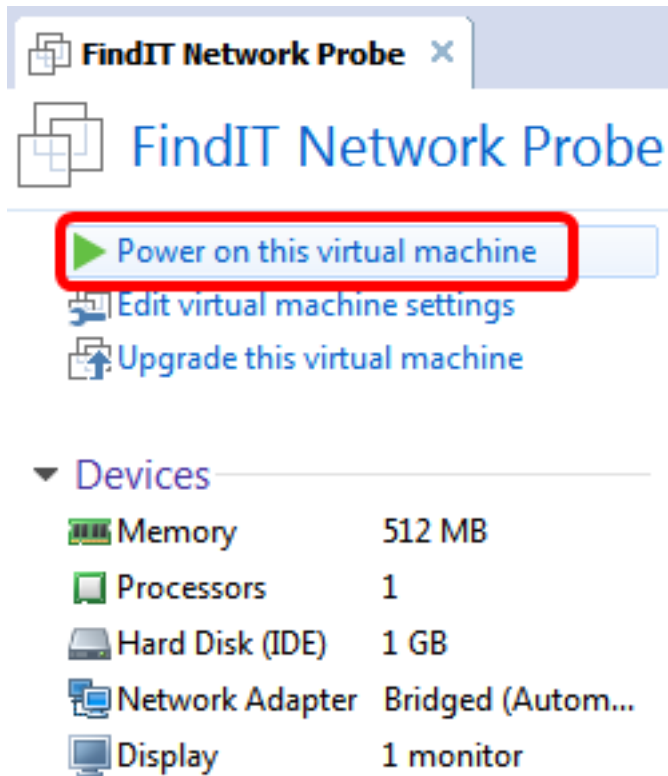
Step 6. Click **Import**.

Note: Once the VMware has completed the deployment, the FindIT Network Probe will be displayed in the Library under My Computer.

Step 7. On the left panel, click to choose the deployed FindIT Network Probe appliance.



Step 8. Click **Power on this virtual machine** to access the console of the VM.



Step 9. Proceed to the [Configure the Deployed FindIT Network Probe](#) section to configure the deployed appliance.

[\[Back to Top\]](#)

[Configure the Deployed FindIT Network Probe](#)

Once deployment is finished, follow the steps below to configure the VM.

Step 1. Access the console of the FindIT Network Probe VM.

Step 2. Log in to the console using the default username and password: cisco/cisco.

FindITProbe login: cisco

Password: cisco

You will be prompted to change the password for the cisco account. The DHCP IP Address and Administration GUI address will be displayed.

```
BusyBox v1.23.2 (2016-09-02 17:15:18 CST) built-in shell (ash)

-----
FindIT Probe (1.0.1.16301)
Powered by OpenWrt CHAOS CALMER (15.05, r47955)

IP Address: 192.168.1.102      Administration GUI: https://192.
Enter 'config_vm' to change platform settings and set a stati
-----

Changing password for cisco
New password: _
```

Note: In this example, the IP Address of FindIT Network Probe is 192.168.1.102 and the Administration GUI address is https://192.168.1.102.

Step 3. Enter and retype the new password for the cisco account.

```
Changing password for cisco
New password:
Retype password:
Password for cisco changed by cisco
cisco@FindITProbe:~# _
```

Step 4. (Optional) Enter the **ifconfig** command to find the IP address of FindIT Network Probe.

```
cisco@FindITProbe:~# ifconfig
eth0      Link encap:Ethernet  HWaddr 00:0C:29:6F:2E:DD
          inet addr:192.168.1.102  Bcast:192.168.1.255  Mask:
          inet6 addr: fe80::20c:29ff:fe6f:2edd/64  Scope:Link
          inet6 addr: fec0::20c:29ff:fe6f:2edd/64  Scope:Site
          UP BROADCAST RUNNING MULTICAST  MTU:1500  Metric:1
          RX packets:149596 errors:0 dropped:0 overruns:0 fra
          TX packets:205206 errors:0 dropped:0 overruns:0 car
          collisions:0 txqueuelen:1000
          RX bytes:26494354 (25.2 MiB)  TX bytes:183876308 (1
lo        Link encap:Local Loopback
          inet addr:127.0.0.1  Mask:255.0.0.0
          inet6 addr: ::1/128  Scope:Host
          UP LOOPBACK RUNNING  MTU:65536  Metric:1
          RX packets:73994 errors:0 dropped:0 overruns:0 fram
          TX packets:73994 errors:0 dropped:0 overruns:0 carr
          collisions:0 txqueuelen:0
          RX bytes:33273411 (31.7 MiB)  TX bytes:33273411 (31
```

You should now have configured FindIT Network Probe on your machine.

[\[Back to Top\]](#)

To learn how to access and configure the initial settings of the FindIT Network Probe, click [here](#) for instructions. To learn how to associate the FindIT Network Probe to the FindIT Network Manager, click [here](#) for instructions.