

Enabling Certification Revocation List Checking Support on the VPN 3000 Series Concentrator

Document ID: 5404

Contents

Introduction

Prerequisites

- Requirements
- Components Used
- Conventions

Enable LDAP Support on Certificate Authority

Request the Identity Certificate on the VPN 3000 Concentrator

Request the Identity Certificate on the VPN Client

Enable CRL Support on the VPN 3000 Concentrator

- HTTP
- LDAP
- Login DN
- Password
- LDAP or HTTP URLs
- Refresh Time
- Enforce Next Update

Debugs

- VPN 3000 Concentrator
- VPN Client

Related Information

Introduction

This document describes how to enable Certification Revocation List (CRL) checking support on the VPN 3000 Series Concentrator.

Prerequisites

Requirements

There are no specific requirements for this document.

Components Used

The information in this document applies to these software and hardware versions:

- Cisco VPN 3000 Concentrator software version 4.1.x
- Cisco VPN Client Version 4.x
- Microsoft Certificate Server

Note: The Microsoft Certificate Server is used in this example. However, the installation of certificates with the use of other certification authority (CA) servers is similar. Supported CA servers are listed in VPN Client for Windows, Release 3.0.

The information in this document was created from the devices in a specific lab environment. All of the devices used in this document started with a cleared (default) configuration. If your network is live, make sure that you understand the potential impact of any command.

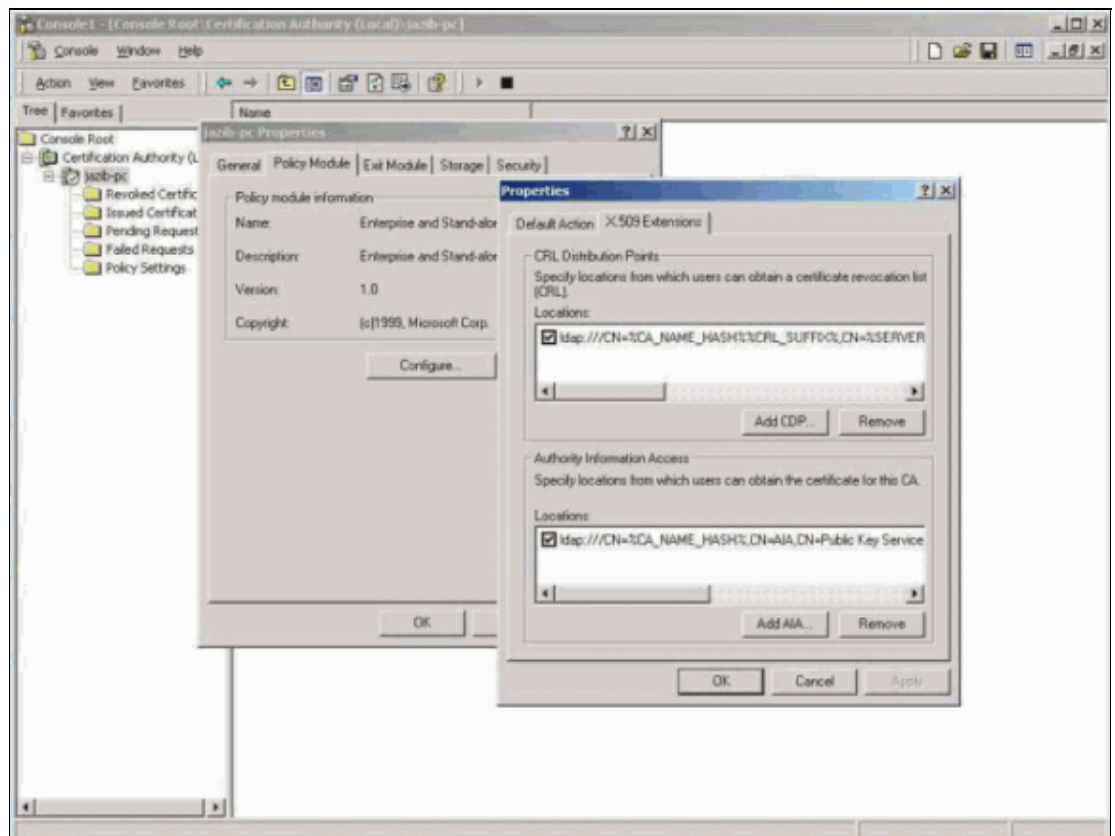
Conventions

For more information on document conventions, refer to the Cisco Technical Tips Conventions.

Enable LDAP Support on Certificate Authority

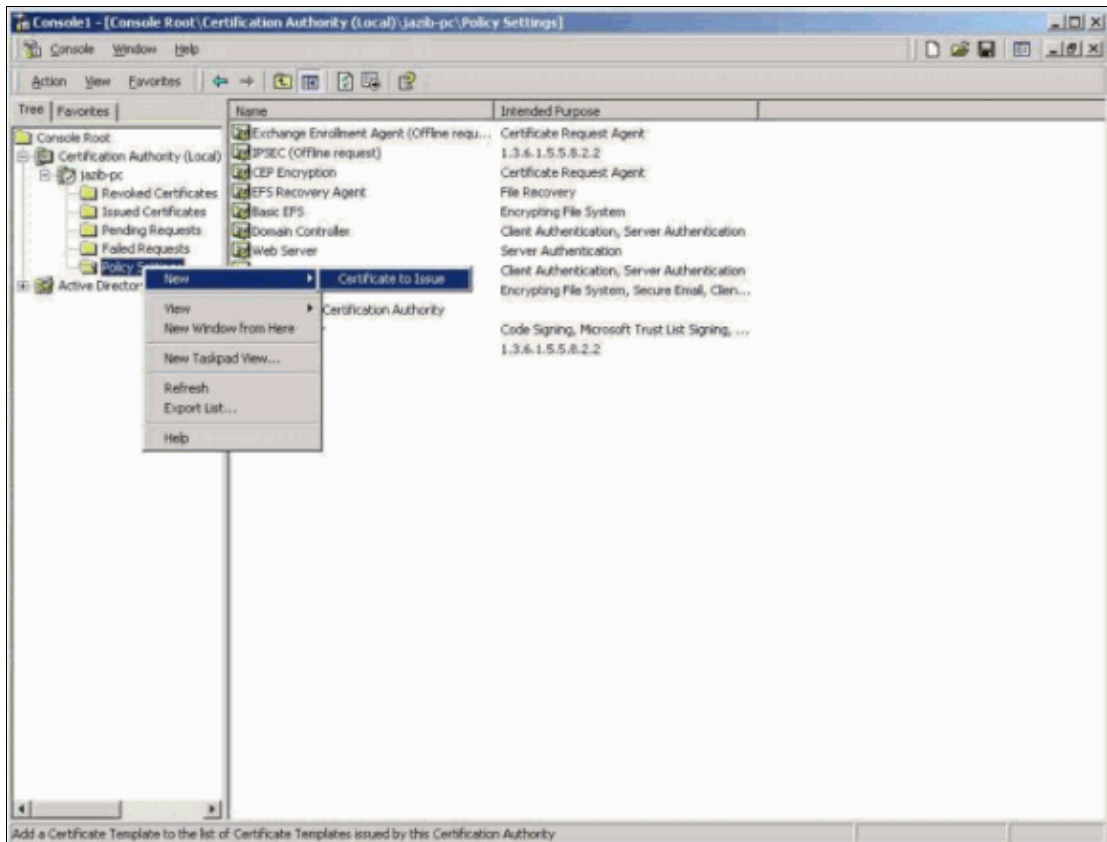
The VPN 3000 Concentrator only supports Lightweight Directory Access Protocol (LDAP)–based CRL checking. If you use Microsoft's CA server, make sure that you run Windows 2000 with Active Directory enabled.

1. In order to enable LDAP support on the server, make sure that LDAP protocol is checked. Complete these steps:
 - a. Open the Microsoft Management Console (MMC) and add **Certificate Authority**.
 - b. Right-click the CA server name, and then click **Properties**.
 - c. Select the Policy Module tab, and then click **Configure**.
 - d. Select the X509 Extensions tab, and make sure that only **LDAP** is selected.

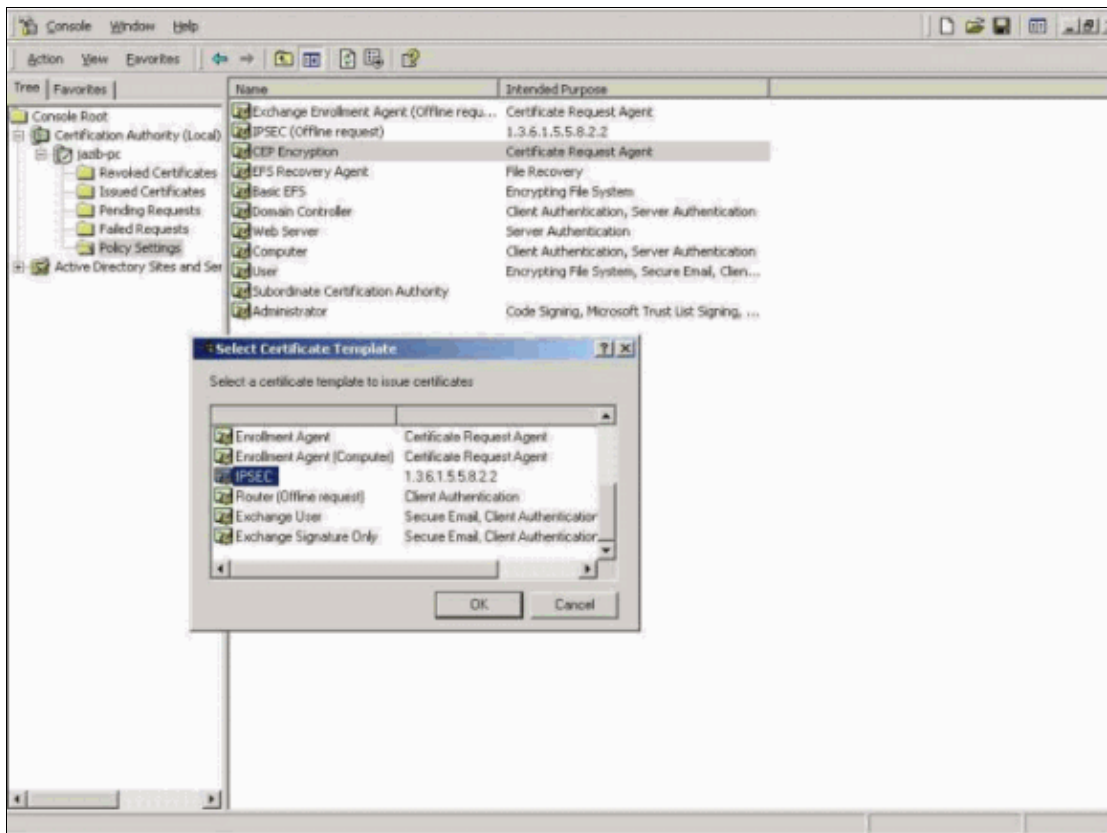


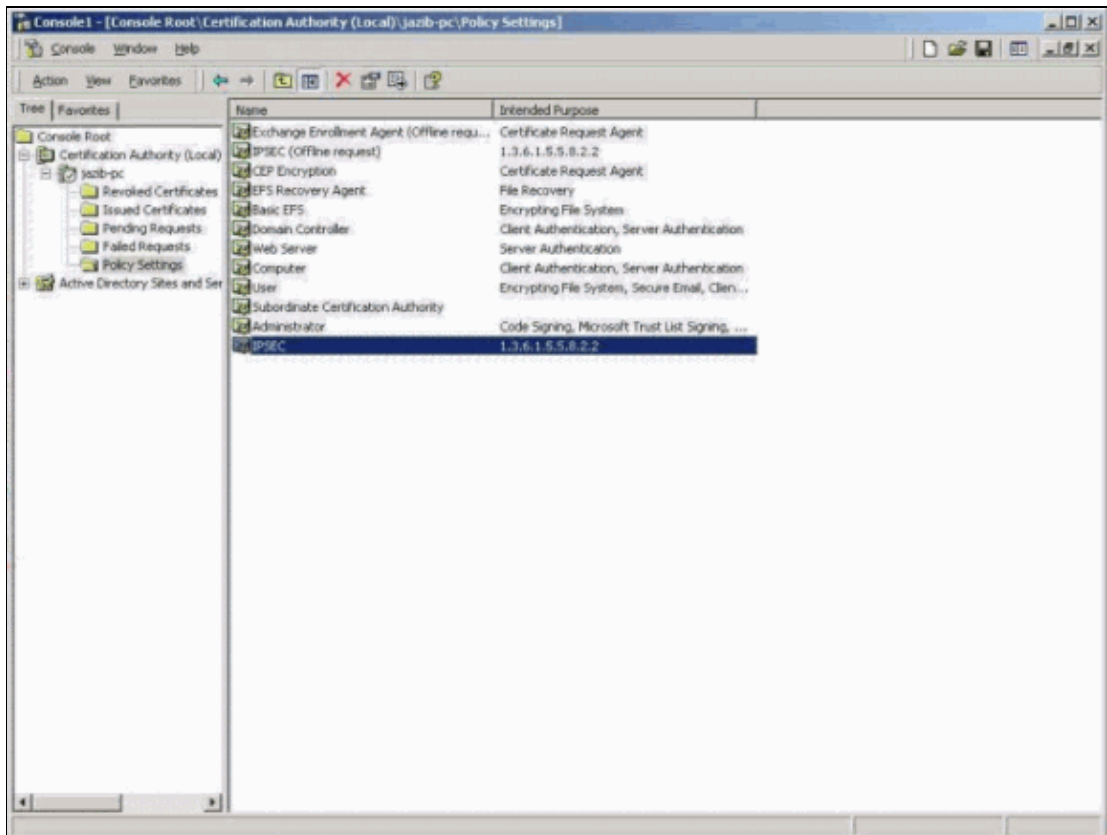
2. Create a new Certificate Profile that supports the file-based certificate enrollment on the Windows 2000 Enterprise-based certificate server. Right-click **Policy Settings**, and add a new Certificate to Issue.

Note: If you use a stand-alone CA server, then this step is not necessary.



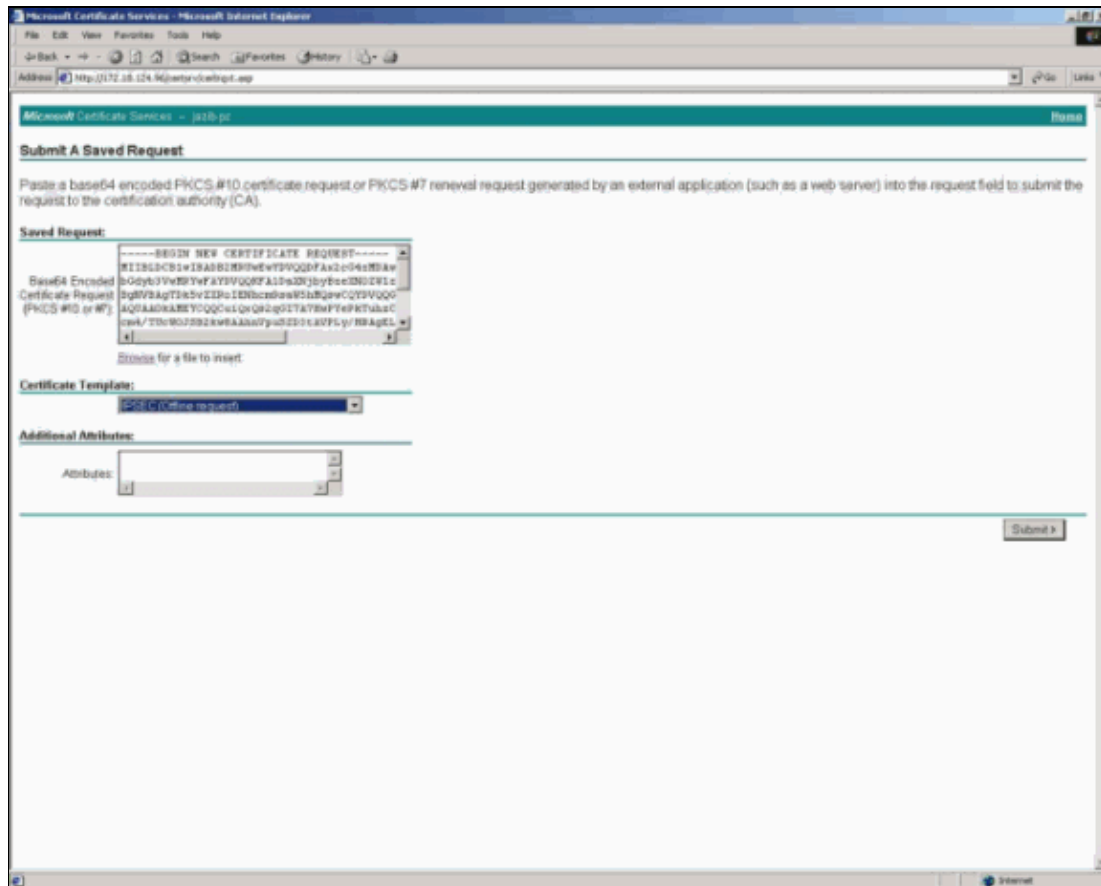
3. Add the IPsec-based Certificate Profile on the Certificate Server.





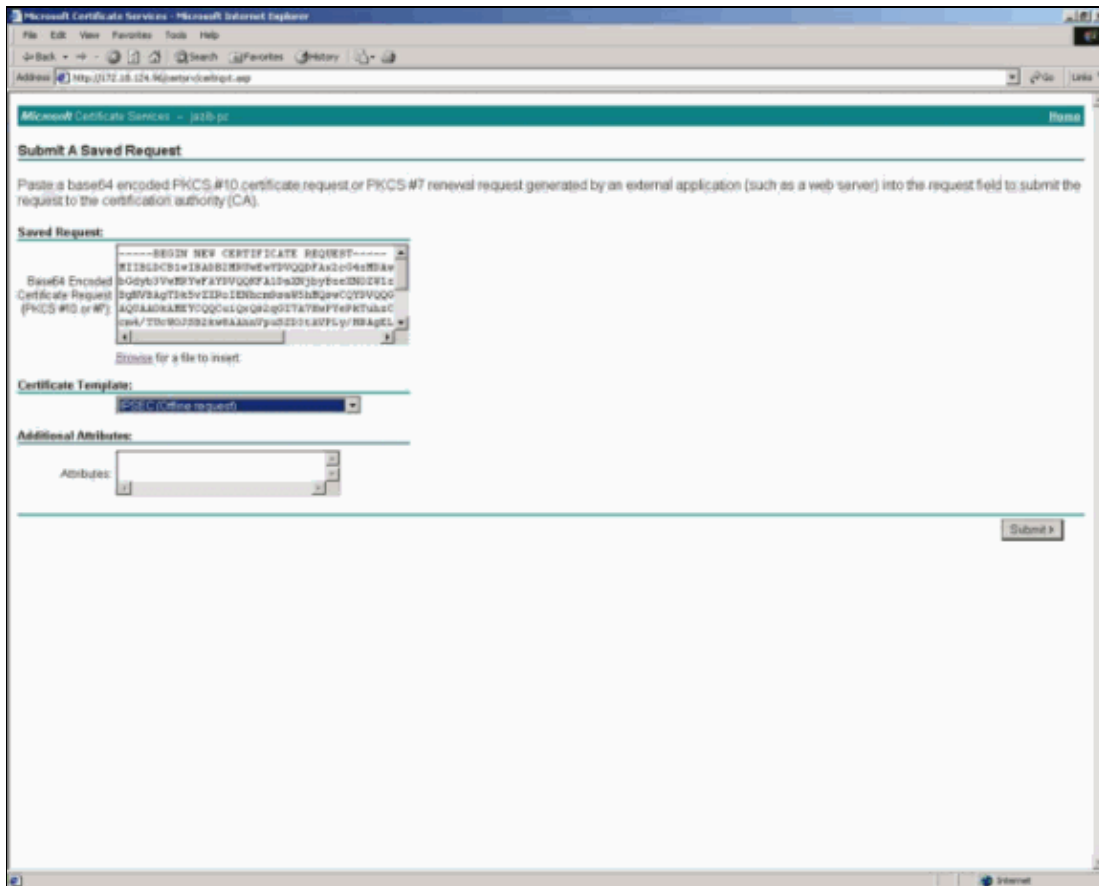
Request the Identity Certificate on the VPN 3000 Concentrator

Refer to Configuring the Cisco VPN 3000 Concentrator 3.0.x to Get a Digital Certificate for information on how to request an identity certificate. When you request the identity certificate for the VPN Concentrator, make sure that you check **IPSEC (Offline request)** under Certificate Template.



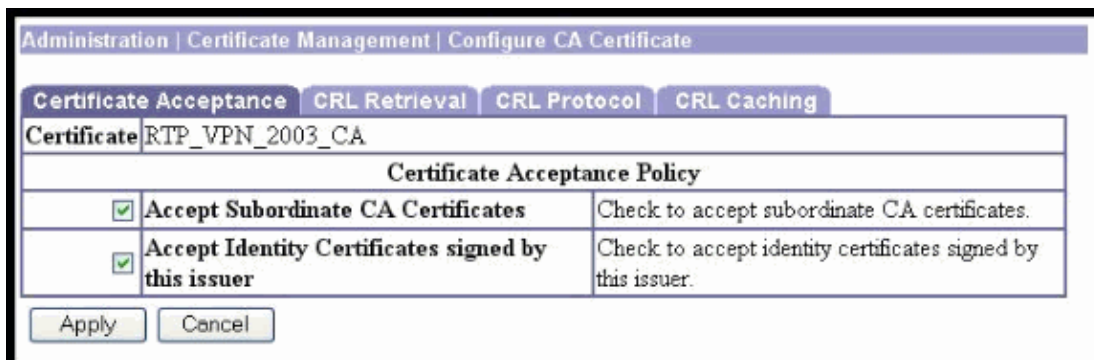
Request the Identity Certificate on the VPN Client

Refer to Configuring the VPN Client 3.0.x to Get a Digital Certificate for information on how to request an identity certificate. When you request the identity certificate for the VPN Client, make sure that you check **IPSEC (Offline request)** under Certificate Template (like on the VPN 3000 Concentrator).



Enable CRL Support on the VPN 3000 Concentrator

In order to enable CRL support on the VPN 3000 Concentrator, select **Administration > Certificate Management > Certificates**. Then click **CRL** on the root certificate. During Phase 1 processing, an IKE peer might deliver a certificate subordinate to this one. This subordinate certificate might not be installed on the VPN Concentrator. Check the **Accept Subordinate CA Certificates** check box to allow the VPN Concentrator to use such subordinate certificates in certificate path validation. Uncheck the check box to disallow the feature.



Choose the appropriate option to enable or disable CRL checking on all certificates issued by this CA. The VPN Concentrator can:

- **Use static CRL distribution points** – Use up to five static CRL distribution points. If you choose this option, specify the LDAP or HTTP URLs on the CRL Protocol tab.
- **Use CRL distribution embedded in the certificate that is checked** – The VPN Concentrator retrieves up to five CRL distribution points from the CRL Distribution Point extension of the

certificate that is verified and augments their information with the configured default values, if necessary. If the attempt of the VPN Concentrator is to retrieve a CRL using the primary CRL distribution point fails, it retries using the next available CRL distribution point in the list. This continues until either a CRL is retrieved or the list is exhausted.

- **Use CRL distribution points embedded in the certificate that is checked or else use static CRL distribution points** – If the VPN Concentrator cannot find five CRL distribution points in the certificate, it adds static CRL distribution points, up to a limit of five.
- **No CRL Checking** – Do not enable CRL checking.

If you choose any of the options to enable CRL checking, configure the CRL Protocols next on the CRL Protocol tab.

Administration | Certificate Management | Configure CA Certificate

Certificate Acceptance | **CRL Retrieval** | CRL Protocol | CRL Caching

Certificate: RTP_VPN_2003_CA

CRL Retrieval Policy

No CRL checking
 Use static CRL distribution points
 Use CRL distribution points embedded in certificate being checked
 Use CRL distribution points embedded in certificate being checked or else use static CRL distribution points

Choose the method to use to retrieve the CRL.

Apply Cancel

Choose a distribution point protocol to use to retrieve the CRL.

Certificate Acceptance | CRL Retrieval | **CRL Protocol** | CRL Caching

Certificate: RTP_VPN_2003_CA

CRL Distribution Points Protocols

HTTP
 LDAP

Server: 172.18.124.96
 Port: 389
 Login DN:
 Password:
 Verify:

Choose a distribution point protocol to use to retrieve the CRL. If you choose HTTP, be sure to assign HTTP rules to the public interface filter. (For more information, click Help.) If you choose LDAP, configure the LDAP distribution point defaults below.

Enter the hostname or IP address of the server.
 Enter the port number of the server. The default port is 389.
 Enter the login DN for access to the CRL on the server.
 Enter the password for the login DN.
 Verify the password for the login DN.

LDAP or HTTP URLs

- Enter up to 5 URLs to use to retrieve the CRL from the server.
- Enter each URL on a new line.

Apply Cancel

HTTP

Check the **HTTP** check box to support the use of the HTTP Distribution Point protocol.

Note: If you check HTTP, be sure to assign HTTP rules to the public interface filter.

LDAP

Check the **LDAP** check box to support the use of the LDAP Distribution Point protocol.

If you chose to support LDAP distribution points, enter this information. If the distribution point extension of the certificate that is checked is missing any of these fields, the VPN Concentrator uses these values.

- **Server** – (Embedded distribution points only.) Enter the IP address or hostname of the CRL distribution server (LDAP server). The maximum is 32 characters.
- **Port** – (Embedded distribution points only.) Enter the port number for the CRL server. Enter 0 (the default) to have the system supply the default port number, 389 (LDAP).

Login DN

If your server requires this field, enter the login DN (Distinguished Name). The Login DN defines the directory path to access this CRL database. For example, cn=crl,ou=certs,o=CANam,c=US. The maximum field length is 128 characters.

Password

If your server requires a password for the Login DN, enter it. The maximum 128 characters.

In order to verify, re-enter the password to verify it. The maximum is 128 characters.

LDAP or HTTP URLs

Enter HTTP or LDAP URLs that identify CRLs located on external servers. If you chose a CRL Retrieval Policy that uses static distribution points, you must enter at least one (and not more than five) valid URL. Enter each URL on a single line. (Scroll right to enter longer values.) Examples of valid URLs are:

- HTTP URL: http://1.1.1.2/CertEnroll/TestCA6-8.crl
- LDAP URL: ldap://100.199.7.6:389/CN=TestCA6-8,CN=2KPDC,CN=CDP,CN=Public Key Services,CN=Services,CN=Configuration,DC=qa2000,DC=com?certificateRevocationList?base?objectclass=cRLDistributionPoint

An administrator can check the **Enabled** check box to allow the VPN Concentrator to cache retrieved CRLs. This method was not used in this example. The default is not to enable CRL caching. Disabling CRL caching (unchecking the check box) clears the CRL cache.

Certificate Acceptance		CRL Retrieval	CRL Protocol	CRL Caching
Certificate				RTP_VPN_2003_CA
CRL Caching				
Enabled	<input type="checkbox"/>	Check to enable CRL caching. Disabling will clear CRL cache.		
Refresh Time	60	Enter the refresh time in minutes (5 - 1440). Enter 0 to use only the Next Update field in the cached CRL.		
Enforce Next Update	<input checked="" type="checkbox"/>	Check to enforce the Next Update field in CRLs. Checking this box will require valid CRLs to have a Next Update value that has not yet lapsed. Clearing the box will allow valid CRLs with no Next Update value or a Next Update value that has lapsed.		
Apply		Cancel		

Refresh Time

Specify the refresh time, in minutes, for the CRL cache. The range is 5 to 1440 minutes and the default value

is 60 minutes.

Enter 0 to use the Next Update field, if present, in the cached CRL. If the Next Update field is not present in the CRL, the CRL is not cached.

Enforce Next Update

The Enforce Next Update feature allows you to control how the VPN Concentrator responds to users authenticating with certificates when the CRL associated with those certificates is outdated.

When a user attempts to authenticate with the use of a digital certificate, the VPN Concentrator looks for the most recent CRL associated with that certificate. The VPN Concentrator checks the Next Update field in its current CRL to determine if a newer CRL might be available. If the Next Update date is current, the VPN Concentrator uses the CRL to authenticate the user. However, if the date has lapsed, the VPN Concentrator contacts the certificate authority to request a newer CRL.

The certificate authority sends another CRL. The new CRL might or might not be more recent. If the Next Update field in the new CRL is current, the VPN Concentrator uses the new CRL to authenticate the user. However, it is possible for the certificate authority to return another CRL with an outdated Next Update field. If the Next Update date in this new CRL has already past, the VPN Concentrator can either use that CRL or not. This depends on how you configure the Enforce Next Update option.

It is also possible that a CRL might not have a Next Update field.

Check the **Enforce Next Update** check box to require a current CRL. If enabled, the VPN Concentrator rejects CRLs that do not have Next Update fields and CRLs for which the Next Update field has lapsed.

Uncheck the box if you want the VPN Concentrator to be able to use CRLs without a Next Update field or CRLs for which the Next Update field has lapsed.

Debugs

Enable the debugs as Configuring the VPN 3000 Concentrator to Communicate with the VPN Client Using Certificates describes. Once you have the debugs enabled, make sure that your debugs are similar to these debugs.

VPN 3000 Concentrator

```
1 08/27/2001 15:24:04.680 SEV=8 IKEDBG/0 RPT=261 172.18.124.96
RECEIVED Message (msgid=0) with payloads :
HDR + SA (1) + VENDOR (13) + VENDOR (13) + VENDOR (13) + NONE (0) ... total length : 964

4 08/27/2001 15:24:04.680 SEV=9 IKEDBG/0 RPT=262 172.18.124.96
processing SA payload

5 08/27/2001 15:24:04.680 SEV=8 IKEDBG/0 RPT=263 172.18.124.96
Proposal # 1, Transform # 1, Type ISAKMP, Id IKE
Parsing received transform:
  Phase 1 failure against global IKE proposal # 1:
  Mismatched attr types for class DH Group:
    Rcv'd: Oakley Group 5
    Cfg'd: Oakley Group 2

10 08/27/2001 15:24:04.680 SEV=8 IKEDBG/0 RPT=264 172.18.124.96
Phase 1 failure against global IKE proposal # 2:
Mismatched attr types for class DH Group:
```

Rcv'd: Oakley Group 5
Cfg'd: Oakley Group 1

13 08/27/2001 15:24:04.680 SEV=8 IKEDBG/0 RPT=265 172.18.124.96
Phase 1 failure against global IKE proposal # 3:
Mismatched attr types for class DH Group:
Rcv'd: Oakley Group 5
Cfg'd: Oakley Group 1

16 08/27/2001 15:24:04.680 SEV=8 IKEDBG/0 RPT=266 172.18.124.96
Phase 1 failure against global IKE proposal # 4:
Mismatched attr types for class DH Group:
Rcv'd: Oakley Group 5
Cfg'd: Oakley Group 2

19 08/27/2001 15:24:04.680 SEV=8 IKEDBG/0 RPT=267 172.18.124.96
Phase 1 failure against global IKE proposal # 5:
Mismatched attr types for class DH Group:
Rcv'd: Oakley Group 5
Cfg'd: Oakley Group 1

22 08/27/2001 15:24:04.680 SEV=8 IKEDBG/0 RPT=268 172.18.124.96
Phase 1 failure against global IKE proposal # 6:
Mismatched attr types for class DH Group:
Rcv'd: Oakley Group 5
Cfg'd: Oakley Group 7

25 08/27/2001 15:24:04.680 SEV=8 IKEDBG/0 RPT=269 172.18.124.96
Phase 1 failure against global IKE proposal # 7:
Mismatched attr types for class DH Group:
Rcv'd: Oakley Group 5
Cfg'd: Oakley Group 2

28 08/27/2001 15:24:04.680 SEV=8 IKEDBG/0 RPT=270 172.18.124.96
Proposal # 1, Transform # 2, Type ISAKMP, Id IKE
Parsing received transform:
Phase 1 failure against global IKE proposal # 1:
Mismatched attr types for class DH Group:
Rcv'd: Oakley Group 5
Cfg'd: Oakley Group 2

33 08/27/2001 15:24:04.680 SEV=8 IKEDBG/0 RPT=271 172.18.124.96
Phase 1 failure against global IKE proposal # 2:
Mismatched attr types for class DH Group:
Rcv'd: Oakley Group 5
Cfg'd: Oakley Group 1

36 08/27/2001 15:24:04.680 SEV=8 IKEDBG/0 RPT=272 172.18.124.96
Phase 1 failure against global IKE proposal # 3:
Mismatched attr types for class DH Group:
Rcv'd: Oakley Group 5
Cfg'd: Oakley Group 1

39 08/27/2001 15:24:04.680 SEV=8 IKEDBG/0 RPT=273 172.18.124.96
Phase 1 failure against global IKE proposal # 4:
Mismatched attr types for class DH Group:
Rcv'd: Oakley Group 5
Cfg'd: Oakley Group 2

42 08/27/2001 15:24:04.680 SEV=8 IKEDBG/0 RPT=274 172.18.124.96
Phase 1 failure against global IKE proposal # 5:
Mismatched attr types for class DH Group:
Rcv'd: Oakley Group 5
Cfg'd: Oakley Group 1

45 08/27/2001 15:24:04.680 SEV=8 IKEDBG/0 RPT=275 172.18.124.96

Phase 1 failure against global IKE proposal # 6:
Mismatched attr types for class DH Group:
Rcv'd: Oakley Group 5
Cfg'd: Oakley Group 7

48 08/27/2001 15:24:04.680 SEV=8 IKEDBG/0 RPT=276 172.18.124.96
Phase 1 failure against global IKE proposal # 7:
Mismatched attr types for class DH Group:
Rcv'd: Oakley Group 5
Cfg'd: Oakley Group 2

51 08/27/2001 15:24:04.680 SEV=8 IKEDBG/0 RPT=277 172.18.124.96
Proposal # 1, Transform # 3, Type ISAKMP, Id IKE
Parsing received transform:
Phase 1 failure against global IKE proposal # 1:
Mismatched attr types for class DH Group:
Rcv'd: Oakley Group 5
Cfg'd: Oakley Group 2

56 08/27/2001 15:24:04.680 SEV=8 IKEDBG/0 RPT=278 172.18.124.96
Phase 1 failure against global IKE proposal # 2:
Mismatched attr types for class DH Group:
Rcv'd: Oakley Group 5
Cfg'd: Oakley Group 1

59 08/27/2001 15:24:04.680 SEV=8 IKEDBG/0 RPT=279 172.18.124.96
Phase 1 failure against global IKE proposal # 3:
Mismatched attr types for class DH Group:
Rcv'd: Oakley Group 5
Cfg'd: Oakley Group 1

62 08/27/2001 15:24:04.680 SEV=8 IKEDBG/0 RPT=280 172.18.124.96
Phase 1 failure against global IKE proposal # 4:
Mismatched attr types for class DH Group:
Rcv'd: Oakley Group 5
Cfg'd: Oakley Group 2

65 08/27/2001 15:24:04.680 SEV=8 IKEDBG/0 RPT=281 172.18.124.96
Phase 1 failure against global IKE proposal # 5:
Mismatched attr types for class DH Group:
Rcv'd: Oakley Group 5
Cfg'd: Oakley Group 1

68 08/27/2001 15:24:04.680 SEV=8 IKEDBG/0 RPT=282 172.18.124.96
Phase 1 failure against global IKE proposal # 6:
Mismatched attr types for class DH Group:
Rcv'd: Oakley Group 5
Cfg'd: Oakley Group 7

71 08/27/2001 15:24:04.680 SEV=8 IKEDBG/0 RPT=283 172.18.124.96
Phase 1 failure against global IKE proposal # 7:
Mismatched attr types for class DH Group:
Rcv'd: Oakley Group 5
Cfg'd: Oakley Group 2

74 08/27/2001 15:24:04.680 SEV=8 IKEDBG/0 RPT=284 172.18.124.96
Proposal # 1, Transform # 4, Type ISAKMP, Id IKE
Parsing received transform:
Phase 1 failure against global IKE proposal # 1:
Mismatched attr types for class DH Group:
Rcv'd: Oakley Group 5
Cfg'd: Oakley Group 2

79 08/27/2001 15:24:04.680 SEV=8 IKEDBG/0 RPT=285 172.18.124.96
Phase 1 failure against global IKE proposal # 2:
Mismatched attr types for class DH Group:

Rcv'd: Oakley Group 5
Cfg'd: Oakley Group 1

82 08/27/2001 15:24:04.680 SEV=8 IKEDBG/0 RPT=286 172.18.124.96
Phase 1 failure against global IKE proposal # 3:
Mismatched attr types for class DH Group:
Rcv'd: Oakley Group 5
Cfg'd: Oakley Group 1

85 08/27/2001 15:24:04.680 SEV=8 IKEDBG/0 RPT=287 172.18.124.96
Phase 1 failure against global IKE proposal # 4:
Mismatched attr types for class DH Group:
Rcv'd: Oakley Group 5
Cfg'd: Oakley Group 2

88 08/27/2001 15:24:04.680 SEV=8 IKEDBG/0 RPT=288 172.18.124.96
Phase 1 failure against global IKE proposal # 5:
Mismatched attr types for class DH Group:
Rcv'd: Oakley Group 5
Cfg'd: Oakley Group 1

91 08/27/2001 15:24:04.680 SEV=8 IKEDBG/0 RPT=289 172.18.124.96
Phase 1 failure against global IKE proposal # 6:
Mismatched attr types for class DH Group:
Rcv'd: Oakley Group 5
Cfg'd: Oakley Group 7

94 08/27/2001 15:24:04.680 SEV=8 IKEDBG/0 RPT=290 172.18.124.96
Phase 1 failure against global IKE proposal # 7:
Mismatched attr types for class DH Group:
Rcv'd: Oakley Group 5
Cfg'd: Oakley Group 2

97 08/27/2001 15:24:04.680 SEV=8 IKEDBG/0 RPT=291 172.18.124.96
Proposal # 1, Transform # 5, Type ISAKMP, Id IKE
Parsing received transform:
Phase 1 failure against global IKE proposal # 1:
Mismatched attr types for class Hash Alg:
Rcv'd: SHA
Cfg'd: MD5

101 08/27/2001 15:24:04.680 SEV=8 IKEDBG/0 RPT=292 172.18.124.96
Phase 1 failure against global IKE proposal # 2:
Mismatched attr types for class DH Group:
Rcv'd: Oakley Group 2
Cfg'd: Oakley Group 1

104 08/27/2001 15:24:04.680 SEV=8 IKEDBG/0 RPT=293 172.18.124.96
Phase 1 failure against global IKE proposal # 3:
Mismatched attr types for class DH Group:
Rcv'd: Oakley Group 2
Cfg'd: Oakley Group 1

107 08/27/2001 15:24:04.680 SEV=8 IKEDBG/0 RPT=294 172.18.124.96
Phase 1 failure against global IKE proposal # 4:
Mismatched attr types for class Hash Alg:
Rcv'd: SHA
Cfg'd: MD5

109 08/27/2001 15:24:04.680 SEV=8 IKEDBG/0 RPT=295 172.18.124.96
Phase 1 failure against global IKE proposal # 5:
Mismatched attr types for class DH Group:
Rcv'd: Oakley Group 2
Cfg'd: Oakley Group 1

112 08/27/2001 15:24:04.680 SEV=8 IKEDBG/0 RPT=296 172.18.124.96

Phase 1 failure against global IKE proposal # 6:
Mismatched attr types for class DH Group:
Rcv'd: Oakley Group 2
Cfg'd: Oakley Group 7

115 08/27/2001 15:24:04.680 SEV=8 IKEDBG/0 RPT=297 172.18.124.96
Phase 1 failure against global IKE proposal # 7:
Mismatched attr types for class Hash Alg:
Rcv'd: SHA
Cfg'd: MD5

117 08/27/2001 15:24:04.680 SEV=7 IKEDBG/0 RPT=298 172.18.124.96
Oakley proposal is acceptable

118 08/27/2001 15:24:04.680 SEV=9 IKEDBG/47 RPT=7 172.18.124.96
processing VID payload

119 08/27/2001 15:24:04.680 SEV=9 IKEDBG/49 RPT=7 172.18.124.96
Received xauth V6 VID

120 08/27/2001 15:24:04.680 SEV=9 IKEDBG/47 RPT=8 172.18.124.96
processing VID payload

121 08/27/2001 15:24:04.680 SEV=9 IKEDBG/49 RPT=8 172.18.124.96
Received DPD VID

122 08/27/2001 15:24:04.680 SEV=9 IKEDBG/47 RPT=9 172.18.124.96
processing VID payload

123 08/27/2001 15:24:04.680 SEV=9 IKEDBG/49 RPT=9 172.18.124.96
Received Cisco Unity client VID

124 08/27/2001 15:24:04.680 SEV=9 IKEDBG/0 RPT=299 172.18.124.96
processing IKE SA

125 08/27/2001 15:24:04.680 SEV=8 IKEDBG/0 RPT=300 172.18.124.96
Proposal # 1, Transform # 1, Type ISAKMP, Id IKE
Parsing received transform:
Phase 1 failure against global IKE proposal # 1:
Mismatched attr types for class DH Group:
Rcv'd: Oakley Group 5
Cfg'd: Oakley Group 2

130 08/27/2001 15:24:04.680 SEV=8 IKEDBG/0 RPT=301 172.18.124.96
Phase 1 failure against global IKE proposal # 2:
Mismatched attr types for class DH Group:
Rcv'd: Oakley Group 5
Cfg'd: Oakley Group 1

133 08/27/2001 15:24:04.680 SEV=8 IKEDBG/0 RPT=302 172.18.124.96
Phase 1 failure against global IKE proposal # 3:
Mismatched attr types for class DH Group:
Rcv'd: Oakley Group 5
Cfg'd: Oakley Group 1

136 08/27/2001 15:24:04.680 SEV=8 IKEDBG/0 RPT=303 172.18.124.96
Phase 1 failure against global IKE proposal # 4:
Mismatched attr types for class DH Group:
Rcv'd: Oakley Group 5
Cfg'd: Oakley Group 2

139 08/27/2001 15:24:04.680 SEV=8 IKEDBG/0 RPT=304 172.18.124.96
Phase 1 failure against global IKE proposal # 5:
Mismatched attr types for class DH Group:
Rcv'd: Oakley Group 5
Cfg'd: Oakley Group 1

142 08/27/2001 15:24:04.680 SEV=8 IKEDBG/0 RPT=305 172.18.124.96
Phase 1 failure against global IKE proposal # 6:
Mismatched attr types for class DH Group:
Rcv'd: Oakley Group 5
Cfg'd: Oakley Group 7

145 08/27/2001 15:24:04.680 SEV=8 IKEDBG/0 RPT=306 172.18.124.96
Phase 1 failure against global IKE proposal # 7:
Mismatched attr types for class DH Group:
Rcv'd: Oakley Group 5
Cfg'd: Oakley Group 2

148 08/27/2001 15:24:04.680 SEV=8 IKEDBG/0 RPT=307 172.18.124.96
Proposal # 1, Transform # 2, Type ISAKMP, Id IKE
Parsing received transform:
Phase 1 failure against global IKE proposal # 1:
Mismatched attr types for class DH Group:
Rcv'd: Oakley Group 5
Cfg'd: Oakley Group 2

153 08/27/2001 15:24:04.680 SEV=8 IKEDBG/0 RPT=308 172.18.124.96
Phase 1 failure against global IKE proposal # 2:
Mismatched attr types for class DH Group:
Rcv'd: Oakley Group 5
Cfg'd: Oakley Group 1

156 08/27/2001 15:24:04.680 SEV=8 IKEDBG/0 RPT=309 172.18.124.96
Phase 1 failure against global IKE proposal # 3:
Mismatched attr types for class DH Group:
Rcv'd: Oakley Group 5
Cfg'd: Oakley Group 1

159 08/27/2001 15:24:04.680 SEV=8 IKEDBG/0 RPT=310 172.18.124.96
Phase 1 failure against global IKE proposal # 4:
Mismatched attr types for class DH Group:
Rcv'd: Oakley Group 5
Cfg'd: Oakley Group 2

162 08/27/2001 15:24:04.680 SEV=8 IKEDBG/0 RPT=311 172.18.124.96
Phase 1 failure against global IKE proposal # 5:
Mismatched attr types for class DH Group:
Rcv'd: Oakley Group 5
Cfg'd: Oakley Group 1

165 08/27/2001 15:24:04.680 SEV=8 IKEDBG/0 RPT=312 172.18.124.96
Phase 1 failure against global IKE proposal # 6:
Mismatched attr types for class DH Group:
Rcv'd: Oakley Group 5
Cfg'd: Oakley Group 7

168 08/27/2001 15:24:04.680 SEV=8 IKEDBG/0 RPT=313 172.18.124.96
Phase 1 failure against global IKE proposal # 7:
Mismatched attr types for class DH Group:
Rcv'd: Oakley Group 5
Cfg'd: Oakley Group 2

171 08/27/2001 15:24:04.680 SEV=8 IKEDBG/0 RPT=314 172.18.124.96
Proposal # 1, Transform # 3, Type ISAKMP, Id IKE
Parsing received transform:
Phase 1 failure against global IKE proposal # 1:
Mismatched attr types for class DH Group:
Rcv'd: Oakley Group 5
Cfg'd: Oakley Group 2

176 08/27/2001 15:24:04.680 SEV=8 IKEDBG/0 RPT=315 172.18.124.96

Phase 1 failure against global IKE proposal # 2:
Mismatched attr types for class DH Group:
Rcv'd: Oakley Group 5
Cfg'd: Oakley Group 1

179 08/27/2001 15:24:04.680 SEV=8 IKEDBG/0 RPT=316 172.18.124.96
Phase 1 failure against global IKE proposal # 3:
Mismatched attr types for class DH Group:
Rcv'd: Oakley Group 5
Cfg'd: Oakley Group 1

182 08/27/2001 15:24:04.680 SEV=8 IKEDBG/0 RPT=317 172.18.124.96
Phase 1 failure against global IKE proposal # 4:
Mismatched attr types for class DH Group:
Rcv'd: Oakley Group 5
Cfg'd: Oakley Group 2

185 08/27/2001 15:24:04.680 SEV=8 IKEDBG/0 RPT=318 172.18.124.96
Phase 1 failure against global IKE proposal # 5:
Mismatched attr types for class DH Group:
Rcv'd: Oakley Group 5
Cfg'd: Oakley Group 1

188 08/27/2001 15:24:04.680 SEV=8 IKEDBG/0 RPT=319 172.18.124.96
Phase 1 failure against global IKE proposal # 6:
Mismatched attr types for class DH Group:
Rcv'd: Oakley Group 5
Cfg'd: Oakley Group 7

191 08/27/2001 15:24:04.680 SEV=8 IKEDBG/0 RPT=320 172.18.124.96
Phase 1 failure against global IKE proposal # 7:
Mismatched attr types for class DH Group:
Rcv'd: Oakley Group 5
Cfg'd: Oakley Group 2

194 08/27/2001 15:24:04.690 SEV=8 IKEDBG/0 RPT=321 172.18.124.96
Proposal # 1, Transform # 4, Type ISAKMP, Id IKE
Parsing received transform:
Phase 1 failure against global IKE proposal # 1:
Mismatched attr types for class DH Group:
Rcv'd: Oakley Group 5
Cfg'd: Oakley Group 2

199 08/27/2001 15:24:04.690 SEV=8 IKEDBG/0 RPT=322 172.18.124.96
Phase 1 failure against global IKE proposal # 2:
Mismatched attr types for class DH Group:
Rcv'd: Oakley Group 5
Cfg'd: Oakley Group 1

202 08/27/2001 15:24:04.690 SEV=8 IKEDBG/0 RPT=323 172.18.124.96
Phase 1 failure against global IKE proposal # 3:
Mismatched attr types for class DH Group:
Rcv'd: Oakley Group 5
Cfg'd: Oakley Group 1

205 08/27/2001 15:24:04.690 SEV=8 IKEDBG/0 RPT=324 172.18.124.96
Phase 1 failure against global IKE proposal # 4:
Mismatched attr types for class DH Group:
Rcv'd: Oakley Group 5
Cfg'd: Oakley Group 2

208 08/27/2001 15:24:04.690 SEV=8 IKEDBG/0 RPT=325 172.18.124.96
Phase 1 failure against global IKE proposal # 5:
Mismatched attr types for class DH Group:
Rcv'd: Oakley Group 5
Cfg'd: Oakley Group 1

211 08/27/2001 15:24:04.690 SEV=8 IKEDBG/0 RPT=326 172.18.124.96
Phase 1 failure against global IKE proposal # 6:
Mismatched attr types for class DH Group:
Rcv'd: Oakley Group 5
Cfg'd: Oakley Group 7

214 08/27/2001 15:24:04.690 SEV=8 IKEDBG/0 RPT=327 172.18.124.96
Phase 1 failure against global IKE proposal # 7:
Mismatched attr types for class DH Group:
Rcv'd: Oakley Group 5
Cfg'd: Oakley Group 2

217 08/27/2001 15:24:04.690 SEV=8 IKEDBG/0 RPT=328 172.18.124.96
Proposal # 1, Transform # 5, Type ISAKMP, Id IKE
Parsing received transform:
Phase 1 failure against global IKE proposal # 1:
Mismatched attr types for class Hash Alg:
Rcv'd: SHA
Cfg'd: MD5

221 08/27/2001 15:24:04.690 SEV=8 IKEDBG/0 RPT=329 172.18.124.96
Phase 1 failure against global IKE proposal # 2:
Mismatched attr types for class DH Group:
Rcv'd: Oakley Group 2
Cfg'd: Oakley Group 1

224 08/27/2001 15:24:04.690 SEV=8 IKEDBG/0 RPT=330 172.18.124.96
Phase 1 failure against global IKE proposal # 3:
Mismatched attr types for class DH Group:
Rcv'd: Oakley Group 2
Cfg'd: Oakley Group 1

227 08/27/2001 15:24:04.690 SEV=8 IKEDBG/0 RPT=331 172.18.124.96
Phase 1 failure against global IKE proposal # 4:
Mismatched attr types for class Hash Alg:
Rcv'd: SHA
Cfg'd: MD5

229 08/27/2001 15:24:04.690 SEV=8 IKEDBG/0 RPT=332 172.18.124.96
Phase 1 failure against global IKE proposal # 5:
Mismatched attr types for class DH Group:
Rcv'd: Oakley Group 2
Cfg'd: Oakley Group 1

232 08/27/2001 15:24:04.690 SEV=8 IKEDBG/0 RPT=333 172.18.124.96
Phase 1 failure against global IKE proposal # 6:
Mismatched attr types for class DH Group:
Rcv'd: Oakley Group 2
Cfg'd: Oakley Group 7

235 08/27/2001 15:24:04.690 SEV=8 IKEDBG/0 RPT=334 172.18.124.96
Phase 1 failure against global IKE proposal # 7:
Mismatched attr types for class Hash Alg:
Rcv'd: SHA
Cfg'd: MD5

237 08/27/2001 15:24:04.690 SEV=7 IKEDBG/28 RPT=3 172.18.124.96
IKE SA Proposal # 1, Transform # 6 acceptable
Matches global IKE entry # 1

238 08/27/2001 15:24:04.690 SEV=8 AUTHDBG/1 RPT=7
AUTH_Open() returns 6

239 08/27/2001 15:24:04.690 SEV=7 AUTH/12 RPT=7
Authentication session opened: handle = 6

240 08/27/2001 15:24:04.690 SEV=9 IKEDBG/0 RPT=335 172.18.124.96
constructing ISA_SA for isakmp

241 08/27/2001 15:24:04.690 SEV=8 IKEDBG/0 RPT=336 172.18.124.96
SENDING Message (msgid=0) with payloads :
HDR + SA (1) ... total length : 84

242 08/27/2001 15:24:04.730 SEV=8 IKEDBG/0 RPT=337 172.18.124.96
RECEIVED Message (msgid=0) with payloads :
HDR + KE (4) + NONCE (10) + NONE (0) ... total length : 184

244 08/27/2001 15:24:04.730 SEV=8 IKEDBG/0 RPT=338 172.18.124.96
RECEIVED Message (msgid=0) with payloads :
HDR + KE (4) + NONCE (10) + NONE (0) ... total length : 184

246 08/27/2001 15:24:04.730 SEV=9 IKEDBG/0 RPT=339 172.18.124.96
processing ke payload

247 08/27/2001 15:24:04.730 SEV=9 IKEDBG/0 RPT=340 172.18.124.96
processing ISA_KE

248 08/27/2001 15:24:04.730 SEV=9 IKEDBG/1 RPT=41 172.18.124.96
processing nonce payload

249 08/27/2001 15:24:04.780 SEV=9 IKEDBG/0 RPT=341 172.18.124.96
constructing ke payload

250 08/27/2001 15:24:04.780 SEV=9 IKEDBG/1 RPT=42 172.18.124.96
constructing nonce payload

251 08/27/2001 15:24:04.780 SEV=9 IKEDBG/46 RPT=8 172.18.124.96
constructing Cisco Unity VID payload

252 08/27/2001 15:24:04.780 SEV=9 IKEDBG/46 RPT=9 172.18.124.96
constructing xauth V6 VID payload

253 08/27/2001 15:24:04.780 SEV=9 IKEDBG/48 RPT=5 172.18.124.96
Send IOS VID

254 08/27/2001 15:24:04.780 SEV=9 IKEDBG/38 RPT=3 172.18.124.96
Constructing VPN 3000 spoofing IOS Vendor ID payload (version:
1.0.0, capabilities: 20000001)

256 08/27/2001 15:24:04.780 SEV=9 IKEDBG/46 RPT=10 172.18.124.96
constructing VID payload

257 08/27/2001 15:24:04.780 SEV=9 IKEDBG/48 RPT=6 172.18.124.96
Send Altiga GW VID

258 08/27/2001 15:24:04.780 SEV=9 IKE/0 RPT=5 172.18.124.96
Generating keys for Responder...

259 08/27/2001 15:24:04.790 SEV=8 IKEDBG/0 RPT=342 172.18.124.96
SENDING Message (msgid=0) with payloads :
HDR + KE (4) ... total length : 395

260 08/27/2001 15:24:04.850 SEV=8 IKEDBG/0 RPT=343 172.18.124.96
RECEIVED Message (msgid=0) with payloads :
HDR + ID (5) + CERT (6) + CERT_REQ (7) + SIG (9) + NOTIFY (11) +
NONE (0) ... total length : 1901

263 08/27/2001 15:24:04.850 SEV=9 IKEDBG/1 RPT=43 172.18.124.96
Processing ID

264 08/27/2001 15:24:04.850 SEV=9 IKEDBG/0 RPT=344 172.18.124.96

processing cert payload

265 08/27/2001 15:24:04.850 SEV=9 IKEDBG/0 RPT=345 172.18.124.96
processing cert request payload

266 08/27/2001 15:24:04.850 SEV=9 IKEDBG/1 RPT=44 172.18.124.96
processing RSA signature

267 08/27/2001 15:24:04.850 SEV=9 IKEDBG/0 RPT=346 172.18.124.96
computing hash

268 08/27/2001 15:24:04.860 SEV=9 IKEDBG/0 RPT=347 172.18.124.96
Processing Notify payload

269 08/27/2001 15:24:04.860 SEV=9 IKEDBG/23 RPT=3 172.18.124.96
Starting group lookup for peer 172.18.124.96

270 08/27/2001 15:24:04.860 SEV=9 IKE/21 RPT=3 172.18.124.96
No Group found by matching IP Address of Cert peer 172.18.124.96

271 08/27/2001 15:24:04.860 SEV=8 AUTHDBG/1 RPT=8
AUTH_Open() returns 7

272 08/27/2001 15:24:04.860 SEV=7 AUTH/12 RPT=8
Authentication session opened: handle = 7

273 08/27/2001 15:24:04.860 SEV=8 AUTHDBG/3 RPT=8
AUTH_PutAttrTable(7, 61af64)

274 08/27/2001 15:24:04.860 SEV=8 AUTHDBG/6 RPT=3
AUTH_GroupAuthenticate(7, 7398828, 42dd5c)

275 08/27/2001 15:24:04.860 SEV=6 IKE/0 RPT=6
MM received unexpected event EV_ACTIVATE_NEW_SA in state
MM_BLD_MSG6

276 08/27/2001 15:24:04.860 SEV=8 AUTHDBG/59 RPT=6
AUTH_BindServer(3ea0278, 0, 0)

277 08/27/2001 15:24:04.860 SEV=9 AUTHDBG/69 RPT=6
Auth Server e5d99c has been bound to ACB 3ea0278, sessions = 1

278 08/27/2001 15:24:04.860 SEV=8 AUTHDBG/65 RPT=6
AUTH_CreateTimer(3ea0278, 0, 0)

279 08/27/2001 15:24:04.860 SEV=9 AUTHDBG/72 RPT=6
Reply timer created: handle = 2A0017

280 08/27/2001 15:24:04.860 SEV=8 AUTHDBG/61 RPT=6
AUTH_BuildMsg(3ea0278, 0, 0)

281 08/27/2001 15:24:04.860 SEV=8 AUTHDBG/64 RPT=6
AUTH_StartTimer(3ea0278, 0, 0)

282 08/27/2001 15:24:04.860 SEV=9 AUTHDBG/73 RPT=6
Reply timer started: handle = 2A0017, timestamp = 902538,
timeout = 30000

283 08/27/2001 15:24:04.860 SEV=8 AUTHDBG/62 RPT=6
AUTH_SndRequest(3ea0278, 0, 0)

284 08/27/2001 15:24:04.860 SEV=8 AUTHDBG/50 RPT=11
IntDB_Decode(37fc5ac, 112)

285 08/27/2001 15:24:04.860 SEV=10 AUTHDECODE/12 RPT=26
IntDB: Type = 1 (0x01) User-Name

286 08/27/2001 15:24:04.860 SEV=10 AUTHDECODE/13 RPT=26
IntDB: Length = 8 (0x08)

287 08/27/2001 15:24:04.860 SEV=10 AUTHDECODE/14 RPT=15
IntDB: Value (String) =

288 08/27/2001 15:24:04.860 SEV=10 AUTHDECODE/0 RPT=15
0000: 63726C67 726F7570 **crlgroup**

289 08/27/2001 15:24:04.860 SEV=10 AUTHDECODE/12 RPT=27
IntDB: Type = 5 (0x05) NAS-Port

290 08/27/2001 15:24:04.860 SEV=10 AUTHDECODE/13 RPT=27
IntDB: Length = 4 (0x04)

291 08/27/2001 15:24:04.860 SEV=10 AUTHDECODE/15 RPT=12
IntDB: Value (Integer) = 0 (0x0000)

292 08/27/2001 15:24:04.860 SEV=10 AUTHDECODE/12 RPT=28
IntDB: Type = 6 (0x06) Service-Type

293 08/27/2001 15:24:04.860 SEV=10 AUTHDECODE/13 RPT=28
IntDB: Length = 4 (0x04)

294 08/27/2001 15:24:04.860 SEV=10 AUTHDECODE/15 RPT=13
IntDB: Value (Integer) = 2 (0x0002)

295 08/27/2001 15:24:04.860 SEV=10 AUTHDECODE/12 RPT=29
IntDB: Type = 7 (0x07) Framed-Protocol

296 08/27/2001 15:24:04.860 SEV=10 AUTHDECODE/13 RPT=29
IntDB: Length = 4 (0x04)

297 08/27/2001 15:24:04.860 SEV=10 AUTHDECODE/15 RPT=14
IntDB: Value (Integer) = 1 (0x0001)

298 08/27/2001 15:24:04.860 SEV=10 AUTHDECODE/12 RPT=30
IntDB: Type = 66 (0x42) Tunnel-Client-Endpoint

299 08/27/2001 15:24:04.860 SEV=10 AUTHDECODE/13 RPT=30
IntDB: Length = 13 (0x0D)

300 08/27/2001 15:24:04.860 SEV=10 AUTHDECODE/14 RPT=16
IntDB: Value (String) =

301 08/27/2001 15:24:04.860 SEV=10 AUTHDECODE/0 RPT=16
0000: 3137322E 31382E31 32342E39 36 172.18.124.96

302 08/27/2001 15:24:04.860 SEV=10 AUTHDECODE/12 RPT=31
IntDB: Type = 4118 (0x1016) Authentication-Server-Type

303 08/27/2001 15:24:04.860 SEV=10 AUTHDECODE/13 RPT=31
IntDB: Length = 4 (0x04)

304 08/27/2001 15:24:04.860 SEV=10 AUTHDECODE/15 RPT=15
IntDB: Value (Integer) = 5 (0x0005)

305 08/27/2001 15:24:04.860 SEV=8 AUTHDBG/47 RPT=11
IntDB_Xmt(3ea0278)

306 08/27/2001 15:24:04.860 SEV=9 AUTHDBG/71 RPT=6
xmit_cnt = 1

307 08/27/2001 15:24:04.860 SEV=8 AUTHDBG/47 RPT=12
IntDB_Xmt(3ea0278)

308 08/27/2001 15:24:04.960 SEV=8 AUTHDBG/49 RPT=6
IntDB_Match(3ea0278, 1ff6140)

309 08/27/2001 15:24:04.960 SEV=8 AUTHDBG/63 RPT=6
AUTH_RcvReply(3ea0278, 0, 0)

310 08/27/2001 15:24:04.960 SEV=8 AUTHDBG/50 RPT=12
IntDB_Decode(1ff6140, 42)

311 08/27/2001 15:24:04.960 SEV=10 AUTHDECODE/12 RPT=32
IntDB: Type = 1 (0x01) User-Name

312 08/27/2001 15:24:04.960 SEV=10 AUTHDECODE/13 RPT=32
IntDB: Length = 8 (0x08)

313 08/27/2001 15:24:04.960 SEV=10 AUTHDECODE/14 RPT=17
IntDB: Value (String) =

314 08/27/2001 15:24:04.960 SEV=10 AUTHDECODE/0 RPT=17
0000: 63726C67 726F7570 crlgroup

315 08/27/2001 15:24:04.960 SEV=8 AUTHDBG/48 RPT=6
IntDB_Rcv(3ea0278)

316 08/27/2001 15:24:04.960 SEV=8 AUTHDBG/66 RPT=6
AUTH_DeleteTimer(3ea0278, 0, 0)

317 08/27/2001 15:24:04.960 SEV=9 AUTHDBG/74 RPT=6
Reply timer stopped: handle = 2A0017, timestamp = 902548

318 08/27/2001 15:24:04.960 SEV=8 AUTHDBG/58 RPT=6
AUTH_Callback(3ea0278, 0, 0)

319 08/27/2001 15:24:04.960 SEV=6 AUTH/39 RPT=5 172.18.124.96
Authentication successful: handle = 7, server = Internal,
group = crlgroup

320 08/27/2001 15:24:04.960 SEV=7 IKEDBG/0 RPT=348 172.18.124.96
Group [crlgroup]
Found Phase 1 Group (crlgroup)

321 08/27/2001 15:24:04.960 SEV=8 AUTHDBG/4 RPT=4
AUTH_GetAttrTable(7, 61afac)

322 08/27/2001 15:24:04.960 SEV=7 IKEDBG/14 RPT=4 172.18.124.96
Group [crlgroup]
Authentication configured for Internal

323 08/27/2001 15:24:04.960 SEV=8 AUTHDBG/2 RPT=7
AUTH_Close(7)

324 08/27/2001 15:24:04.960 SEV=8 CERT/14 RPT=3
CERT_Authenticate(6, 7398828, 42722c)

325 08/27/2001 15:24:04.960 SEV=8 AUTHDBG/60 RPT=6
AUTH_UnbindServer(3ea0278, 0, 0)

326 08/27/2001 15:24:04.960 SEV=9 AUTHDBG/70 RPT=6
Auth Server e5d99c has been unbound from ACB 3ea0278,
sessions = 0

327 08/27/2001 15:24:04.960 SEV=8 AUTHDBG/10 RPT=7
AUTH_Int_FreeAuthCB(3ea0278)

328 08/27/2001 15:24:04.960 SEV=9 AUTHDBG/19 RPT=7

instance = 8, clone_instance = 0

329 08/27/2001 15:24:04.960 SEV=7 AUTH/13 RPT=7
Authentication session closed: handle = 7

330 08/27/2001 15:24:04.960 SEV=7 CERT/5 RPT=3
Checking revocation status: session = 6

331 08/27/2001 15:24:04.960 SEV=8 AUTHDBG/3 RPT=9
AUTH_PutAttrTable(6, f2f754)

332 08/27/2001 15:24:04.960 SEV=8 CERT/51 RPT=3
CERT_CheckCRLConfig(3eb7914, 0, 0)

333 08/27/2001 15:24:04.970 SEV=7 CERT/1 RPT=3
Certificate is valid: session = 6

334 08/27/2001 15:24:04.980 SEV=8 CERT/55 RPT=2
CERT_CheckCache(3eb7914, 0, 0)

335 08/27/2001 15:24:04.980 SEV=8 CERT/53 RPT=2
CERT_OpenSession(3eb7914, 0, 0)

336 08/27/2001 15:24:04.980 SEV=8 AUTHDBG/1 RPT=9
AUTH_Open() returns 8

337 08/27/2001 15:24:04.980 SEV=7 AUTH/12 RPT=9
Authentication session opened: handle = 8

338 08/27/2001 15:24:04.980 SEV=8 CERT/57 RPT=2
CERT_SndRequest(3eb7914, 0, 0)

339 08/27/2001 15:24:04.980 SEV=8 AUTHDBG/3 RPT=10
AUTH_PutAttrTable(8, f2f494)

340 08/27/2001 15:24:04.980 SEV=8 AUTHDBG/5 RPT=2
AUTH_Authenticate(8, 3eb7914, 47ed40)

341 08/27/2001 15:24:04.980 SEV=8 AUTHDBG/59 RPT=7
AUTH_BindServer(3ea0278, 0, 0)

342 08/27/2001 15:24:04.980 SEV=9 AUTHDBG/69 RPT=7
Auth Server fl62bc has been bound to ACB 3ea0278,
sessions = 1

343 08/27/2001 15:24:04.980 SEV=8 AUTHDBG/65 RPT=7
AUTH_CreateTimer(3ea0278, 0, 0)

344 08/27/2001 15:24:04.980 SEV=9 AUTHDBG/72 RPT=7
Reply timer created: handle = 2B0017

345 08/27/2001 15:24:04.980 SEV=8 AUTHDBG/61 RPT=7
AUTH_BuildMsg(3ea0278, 0, 0)

346 08/27/2001 15:24:04.980 SEV=8 AUTHDBG/100 RPT=1
Ldap_Build(3ea0278)

347 08/27/2001 15:24:04.980 SEV=8 AUTHDBG/122 RPT=1
Ldap connecting to host 172.18.124.96:389

348 08/27/2001 15:24:04.980 SEV=8 AUTHDBG/123 RPT=1
Ldap socket 2 connected to host 172.18.124.96

349 08/27/2001 15:24:04.980 SEV=8 AUTHDBG/107 RPT=1
Ldap directory server 172.18.124.96 is up

350 08/27/2001 15:24:04.980 SEV=7 AUTHDBG/143 RPT=1
Ldap Lookup - 16 bytes successfully received.

351 08/27/2001 15:24:04.980 SEV=8 AUTHDBG/106 RPT=1
Ldap bind success(f162bc)

352 08/27/2001 15:24:04.980 SEV=8 AUTHDBG/64 RPT=7
AUTH_StartTimer(3ea0278, 0, 0)

353 08/27/2001 15:24:04.980 SEV=9 AUTHDBG/73 RPT=7
Reply timer started: handle = 2B0017, timestamp = 902550,
timeout = 30000

354 08/27/2001 15:24:04.980 SEV=8 AUTHDBG/62 RPT=7
AUTH_SndRequest(3ea0278, 0, 0)

355 08/27/2001 15:24:04.980 SEV=8 AUTHDBG/101 RPT=1
Ldap_Xmt(3ea0278)

356 08/27/2001 15:24:04.980 SEV=8 AUTHDBG/114 RPT=1
Ldap search:
DN : CN=jazib-pc,CN=jazib-pc,CN=CDP,CN=Public
Key Services,CN=Services,CN=Configuration,DC=rtp-vpn,
DC=cisco,DC=com
Filter : objectclass=cRLDistributionPoint
Scope : LDAP_SCOPE_BASE

360 08/27/2001 15:24:04.980 SEV=9 AUTHDBG/71 RPT=7
xmit_cnt = 1

361 08/27/2001 15:24:05.080 SEV=7 AUTHDBG/143 RPT=2
Ldap Lookup - 497 bytes successfully received.

362 08/27/2001 15:24:05.180 SEV=7 AUTHDBG/143 RPT=3
Ldap Lookup - 16 bytes successfully received.

363 08/27/2001 15:24:05.180 SEV=8 AUTHDBG/112 RPT=1
Ldap poll got final result

364 08/27/2001 15:24:05.180 SEV=8 AUTHDBG/103 RPT=1
Ldap_Match(3ea0278, 1fe8108), id = 0x02, rcvd = 0x02

365 08/27/2001 15:24:05.180 SEV=8 AUTHDBG/63 RPT=7
AUTH_RcvReply(3ea0278, 0, 0)

366 08/27/2001 15:24:05.180 SEV=8 AUTHDBG/102 RPT=1
Ldap_Rcv(3ea0278)

367 08/27/2001 15:24:05.180 SEV=12 AUTHDBG/0 RPT=1
LDAP: Number of lists = 1, Rcv data length = 326
0000: 30820142 3081ED02 0101300D 06092A86 0..B0.....0...*.
0010: 4886F70D 01010505 00308183 3120301E H.....0..1 0.
0020: 06092A86 4886F70D 01090116 116A6672 ..*.H.....jfr
0030: 6168696D 40636973 636F2E63 6F6D310B ahim@cisco.com1.
0040: 30090603 55040613 02555331 0B300906 0...U....US1.0..
0050: 03550408 13024E43 310C300A 06035504 .U....NC1.0...U.
0060: 07130352 54503116 30140603 55040A13 ...RTP1.0...U...

375 08/27/2001 15:24:05.180 SEV=8 AUTHDBG/98 RPT=1
LdapApiIntClose(3ea0278)

376 08/27/2001 15:24:05.180 SEV=8 AUTHDBG/66 RPT=7
AUTH_DeleteTimer(3ea0278, 0, 0)

377 08/27/2001 15:24:05.180 SEV=9 AUTHDBG/74 RPT=7
Reply timer stopped: handle = 2B0017, timestamp = 902570

378 08/27/2001 15:24:05.180 SEV=8 AUTHDBG/58 RPT=7
AUTH_Callback(3ea0278, 0, 0)

379 08/27/2001 15:24:05.180 SEV=6 AUTH/4 RPT=2
Authentication successful: handle = 8, server = crl_server,
user =

380 08/27/2001 15:24:05.180 SEV=8 AUTHDBG/4 RPT=5
AUTH_GetAttrTable(8, f395e0)

381 08/27/2001 15:24:05.180 SEV=7 CERT/7 RPT=1
Retrieved revocation list: session = 6

382 08/27/2001 15:24:05.180 SEV=8 AUTHDBG/60 RPT=7
AUTH_UnbindServer(3ea0278, 0, 0)

383 08/27/2001 15:24:05.180 SEV=9 AUTHDBG/70 RPT=7
Auth Server fl62bc has been unbound from ACB 3ea0278,
sessions = 0

384 08/27/2001 15:24:05.180 SEV=8 CERT/58 RPT=1
CERT_RcvReply(3eb7914, 0, 0)

385 08/27/2001 15:24:05.180 SEV=8 CERT/54 RPT=2
CERT_CloseSession(3eb7914, 0, 0)

386 08/27/2001 15:24:05.180 SEV=8 AUTHDBG/2 RPT=8
AUTH_Close(8)

387 08/27/2001 15:24:05.180 SEV=8 CERT/52 RPT=1
CERT_CheckCRL(3eb7914, 0, 0)

388 08/27/2001 15:24:05.180 SEV=8 AUTHDBG/10 RPT=8
AUTH_Int_FreeAuthCB(3ea0278)

389 08/27/2001 15:24:05.180 SEV=9 AUTHDBG/19 RPT=8
instance = 9, clone_instance = 0

390 08/27/2001 15:24:05.180 SEV=7 AUTH/13 RPT=8
Authentication session closed: handle = 8

391 08/27/2001 15:24:05.180 SEV=7 CERT/2 RPT=1
Certificate has not been revoked: session = 6

392 08/27/2001 15:24:05.180 SEV=8 CERT/56 RPT=3
CERT_Callback(3eb7914, 0, 0)

393 08/27/2001 15:24:05.180 SEV=5 IKE/79 RPT=2 172.18.124.96
Group [crlgroup]
Validation of certificate successful
(CN=user1, SN=61A1D542000000000009)

395 08/27/2001 15:24:05.180 SEV=7 IKEDBG/0 RPT=349 172.18.124.96
Group [crlgroup]
peer ID type 9 received (DER_ASN1_DN)

396 08/27/2001 15:24:05.190 SEV=9 IKEDBG/1 RPT=45 172.18.124.96
Group [crlgroup]
constructing ID

397 08/27/2001 15:24:05.190 SEV=9 IKEDBG/0 RPT=350 172.18.124.96
Group [crlgroup]
constructing cert payload

398 08/27/2001 15:24:05.190 SEV=9 IKEDBG/1 RPT=46 172.18.124.96

Group [crlgroup]
constructing RSA signature

399 08/27/2001 15:24:05.190 SEV=9 IKEDBG/0 RPT=351 172.18.124.96
Group [crlgroup]
computing hash

400 08/27/2001 15:24:05.200 SEV=9 IKEDBG/46 RPT=11 172.18.124.96
Group [crlgroup]
constructing dpd vid payload

401 08/27/2001 15:24:05.200 SEV=8 IKEDBG/0 RPT=352 172.18.124.96
SENDING Message (msgid=0) with payloads :
HDR + ID (5) ... total length : 1504

402 08/27/2001 15:24:05.200 SEV=9 IKEDBG/0 RPT=353 172.18.124.96
Group [crlgroup]
constructing blank hash

403 08/27/2001 15:24:05.200 SEV=9 IKEDBG/0 RPT=354 172.18.124.96
Group [crlgroup]
constructing qm hash

404 08/27/2001 15:24:05.200 SEV=8 IKEDBG/0 RPT=355 172.18.124.96
SENDING Message (msgid=feb4acac) with payloads :
HDR + HASH (8) ... total length : 100

406 08/27/2001 15:24:09.460 SEV=8 IKEDBG/0 RPT=356 172.18.124.96
RECEIVED Message (msgid=feb4acac) with payloads :
HDR + HASH (8) + ATTR (14) + NONE (0) ... total length : 85

408 08/27/2001 15:24:09.460 SEV=9 IKEDBG/1 RPT=47
process_attr(): Enter!

409 08/27/2001 15:24:09.460 SEV=9 IKEDBG/1 RPT=48
Processing cfg reply attributes.

410 08/27/2001 15:24:09.460 SEV=8 AUTHDBG/1 RPT=10
AUTH_Open() returns 9

411 08/27/2001 15:24:09.460 SEV=7 AUTH/12 RPT=10
Authentication session opened: handle = 9

412 08/27/2001 15:24:09.460 SEV=8 AUTHDBG/3 RPT=11
AUTH_PutAttrTable(9, 61af64)

413 08/27/2001 15:24:09.460 SEV=8 AUTHDBG/5 RPT=3
AUTH_Authenticate(9, 2f1b9a0, 45d68c)

414 08/27/2001 15:24:09.460 SEV=8 AUTHDBG/59 RPT=8
AUTH_BindServer(3eb81a4, 0, 0)

415 08/27/2001 15:24:09.460 SEV=9 AUTHDBG/69 RPT=8
Auth Server e5d99c has been bound to ACB 3eb81a4,
sessions = 1

416 08/27/2001 15:24:09.460 SEV=8 AUTHDBG/65 RPT=8
AUTH_CreateTimer(3eb81a4, 0, 0)

417 08/27/2001 15:24:09.460 SEV=9 AUTHDBG/72 RPT=8
Reply timer created: handle = 2D0017

418 08/27/2001 15:24:09.460 SEV=8 AUTHDBG/61 RPT=8
AUTH_BuildMsg(3eb81a4, 0, 0)

419 08/27/2001 15:24:09.460 SEV=8 AUTHDBG/64 RPT=8

AUTH_StartTimer(3eb81a4, 0, 0)

420 08/27/2001 15:24:09.460 SEV=9 AUTHDBG/73 RPT=8
Reply timer started: handle = 2D0017, timestamp = 902998,
timeout = 30000

421 08/27/2001 15:24:09.460 SEV=8 AUTHDBG/62 RPT=8
AUTH_SndRequest(3eb81a4, 0, 0)

422 08/27/2001 15:24:09.460 SEV=8 AUTHDBG/50 RPT=13
IntDB_Decode(37f8938, 101)

423 08/27/2001 15:24:09.460 SEV=10 AUTHDECODE/12 RPT=33
IntDB: Type = 1 (0x01) User-Name

424 08/27/2001 15:24:09.460 SEV=10 AUTHDECODE/13 RPT=33
IntDB: Length = 9 (0x09)

425 08/27/2001 15:24:09.460 SEV=10 AUTHDECODE/14 RPT=18
IntDB: Value (String) =

426 08/27/2001 15:24:09.460 SEV=10 AUTHDECODE/0 RPT=18
0000: 69707365 63757365 72 ipsecuser

427 08/27/2001 15:24:09.460 SEV=10 AUTHDECODE/12 RPT=34
IntDB: Type = 5 (0x05) NAS-Port

428 08/27/2001 15:24:09.460 SEV=10 AUTHDECODE/13 RPT=34
IntDB: Length = 4 (0x04)

429 08/27/2001 15:24:09.460 SEV=10 AUTHDECODE/15 RPT=16
IntDB: Value (Integer) = 1003 (0x03EB)

430 08/27/2001 15:24:09.460 SEV=10 AUTHDECODE/12 RPT=35
IntDB: Type = 6 (0x06) Service-Type

431 08/27/2001 15:24:09.460 SEV=10 AUTHDECODE/13 RPT=35
IntDB: Length = 4 (0x04)

432 08/27/2001 15:24:09.460 SEV=10 AUTHDECODE/15 RPT=17
IntDB: Value (Integer) = 2 (0x0002)

433 08/27/2001 15:24:09.460 SEV=10 AUTHDECODE/12 RPT=36
IntDB: Type = 7 (0x07) Framed-Protocol

434 08/27/2001 15:24:09.460 SEV=10 AUTHDECODE/13 RPT=36
IntDB: Length = 4 (0x04)

435 08/27/2001 15:24:09.460 SEV=10 AUTHDECODE/15 RPT=18
IntDB: Value (Integer) = 1 (0x0001)

436 08/27/2001 15:24:09.460 SEV=10 AUTHDECODE/12 RPT=37
IntDB: Type = 66 (0x42) Tunnel-Client-Endpoint

437 08/27/2001 15:24:09.460 SEV=10 AUTHDECODE/13 RPT=37
IntDB: Length = 13 (0x0D)

438 08/27/2001 15:24:09.460 SEV=10 AUTHDECODE/14 RPT=19
IntDB: Value (String) =

439 08/27/2001 15:24:09.460 SEV=10 AUTHDECODE/0 RPT=19
0000: 3137322E 31382E31 32342E39 36 172.18.124.96

440 08/27/2001 15:24:09.460 SEV=8 AUTHDBG/47 RPT=13
IntDB_Xmt(3eb81a4)

441 08/27/2001 15:24:09.460 SEV=9 AUTHDBG/71 RPT=8
xmit_cnt = 1

442 08/27/2001 15:24:09.460 SEV=8 AUTHDBG/47 RPT=14
IntDB_Xmt(3eb81a4)

443 08/27/2001 15:24:09.560 SEV=8 AUTHDBG/49 RPT=7
IntDB_Match(3eb81a4, 2001040)

444 08/27/2001 15:24:09.560 SEV=8 AUTHDBG/63 RPT=8
AUTH_RcvReply(3eb81a4, 0, 0)

445 08/27/2001 15:24:09.560 SEV=8 AUTHDBG/50 RPT=14
IntDB_Decode(2001040, 60)

446 08/27/2001 15:24:09.560 SEV=10 AUTHDECODE/12 RPT=38
IntDB: Type = 1 (0x01) User-Name

447 08/27/2001 15:24:09.560 SEV=10 AUTHDECODE/13 RPT=38
IntDB: Length = 9 (0x09)

448 08/27/2001 15:24:09.560 SEV=10 AUTHDECODE/14 RPT=20
IntDB: Value (String) =

449 08/27/2001 15:24:09.560 SEV=10 AUTHDECODE/0 RPT=20
0000: 69707365 63757365 72 ipsecuser

450 08/27/2001 15:24:09.560 SEV=10 AUTHDECODE/12 RPT=39
IntDB: Type = 25 (0x19) Class

451 08/27/2001 15:24:09.560 SEV=10 AUTHDECODE/13 RPT=39
IntDB: Length = 8 (0x08)

452 08/27/2001 15:24:09.560 SEV=10 AUTHDECODE/14 RPT=21
IntDB: Value (String) =

453 08/27/2001 15:24:09.560 SEV=10 AUTHDECODE/0 RPT=21
0000: 63726C67 726F7570 crlgroup

454 08/27/2001 15:24:09.560 SEV=8 AUTHDBG/48 RPT=7
IntDB_Rcv(3eb81a4)

455 08/27/2001 15:24:09.560 SEV=8 AUTHDBG/66 RPT=8
AUTH_DeleteTimer(3eb81a4, 0, 0)

456 08/27/2001 15:24:09.560 SEV=9 AUTHDBG/74 RPT=8
Reply timer stopped: handle = 2D0017, timestamp = 903008

457 08/27/2001 15:24:09.560 SEV=8 AUTHDBG/58 RPT=8
AUTH_Callback(3eb81a4, 0, 0)

458 08/27/2001 15:24:09.560 SEV=6 AUTH/4 RPT=3 172.18.124.96
Authentication successful: handle = 9, server = Internal,
user = ipsecuser

459 08/27/2001 15:24:09.560 SEV=8 AUTHDBG/3 RPT=12
AUTH_PutAttrTable(9, f39688)

460 08/27/2001 15:24:09.560 SEV=8 AUTHDBG/60 RPT=8
AUTH_UnbindServer(3eb81a4, 0, 0)

461 08/27/2001 15:24:09.560 SEV=9 AUTHDBG/70 RPT=8
Auth Server e5d99c has been unbound from ACB 3eb81a4,
sessions = 0

462 08/27/2001 15:24:09.560 SEV=8 AUTHDBG/59 RPT=9

AUTH_BindServer(3eb81a4, 0, 0)

463 08/27/2001 15:24:09.560 SEV=9 AUTHDBG/69 RPT=9
Auth Server e5d99c has been bound to ACB 3eb81a4,
sessions = 1

464 08/27/2001 15:24:09.560 SEV=8 AUTHDBG/65 RPT=9
AUTH_CreateTimer(3eb81a4, 0, 0)

465 08/27/2001 15:24:09.560 SEV=9 AUTHDBG/72 RPT=9
Reply timer created: handle = 2E0017

466 08/27/2001 15:24:09.560 SEV=8 AUTHDBG/61 RPT=9
AUTH_BuildMsg(3eb81a4, 0, 0)

467 08/27/2001 15:24:09.560 SEV=8 AUTHDBG/64 RPT=9
AUTH_StartTimer(3eb81a4, 0, 0)

468 08/27/2001 15:24:09.560 SEV=9 AUTHDBG/73 RPT=9
Reply timer started: handle = 2E0017, timestamp = 903008,
timeout = 30000

469 08/27/2001 15:24:09.560 SEV=8 AUTHDBG/62 RPT=9
AUTH_SndRequest(3eb81a4, 0, 0)

470 08/27/2001 15:24:09.560 SEV=8 AUTHDBG/50 RPT=15
IntDB_Decode(2000eb0, 42)

471 08/27/2001 15:24:09.560 SEV=10 AUTHDECODE/12 RPT=40
IntDB: Type = 1 (0x01) User-Name

472 08/27/2001 15:24:09.560 SEV=10 AUTHDECODE/13 RPT=40
IntDB: Length = 8 (0x08)

473 08/27/2001 15:24:09.560 SEV=10 AUTHDECODE/14 RPT=22
IntDB: Value (String) =

474 08/27/2001 15:24:09.560 SEV=10 AUTHDECODE/0 RPT=22
0000: 63726C67 726F7570 crlgroup

475 08/27/2001 15:24:09.560 SEV=8 AUTHDBG/47 RPT=15
IntDB_Xmt(3eb81a4)

476 08/27/2001 15:24:09.560 SEV=9 AUTHDBG/71 RPT=9
xmit_cnt = 1

477 08/27/2001 15:24:09.560 SEV=8 AUTHDBG/47 RPT=16
IntDB_Xmt(3eb81a4)

478 08/27/2001 15:24:09.660 SEV=8 AUTHDBG/49 RPT=8
IntDB_Match(3eb81a4, 20014f0)

479 08/27/2001 15:24:09.660 SEV=8 AUTHDBG/63 RPT=9
AUTH_RcvReply(3eb81a4, 0, 0)

480 08/27/2001 15:24:09.660 SEV=8 AUTHDBG/50 RPT=16
IntDB_Decode(20014f0, 42)

481 08/27/2001 15:24:09.660 SEV=10 AUTHDECODE/12 RPT=41
IntDB: Type = 1 (0x01) User-Name

482 08/27/2001 15:24:09.660 SEV=10 AUTHDECODE/13 RPT=41
IntDB: Length = 8 (0x08)

483 08/27/2001 15:24:09.660 SEV=10 AUTHDECODE/14 RPT=23
IntDB: Value (String) =

484 08/27/2001 15:24:09.660 SEV=10 AUTHDECODE/0 RPT=23
0000: 63726C67 726F7570 crlgroup

485 08/27/2001 15:24:09.660 SEV=8 AUTHDBG/48 RPT=8
IntDB_Rcv(3eb81a4)

486 08/27/2001 15:24:09.660 SEV=8 AUTHDBG/66 RPT=9
AUTH_DeleteTimer(3eb81a4, 0, 0)

487 08/27/2001 15:24:09.660 SEV=9 AUTHDBG/74 RPT=9
Reply timer stopped: handle = 2E0017, timestamp = 903018

488 08/27/2001 15:24:09.660 SEV=8 AUTHDBG/58 RPT=9
AUTH_Callback(3eb81a4, 0, 0)

489 08/27/2001 15:24:09.660 SEV=6 AUTH/39 RPT=6 172.18.124.96
Authentication successful: handle = 9, server = Internal,
group = crlgroup

490 08/27/2001 15:24:09.660 SEV=8 AUTHDBG/3 RPT=13
AUTH_PutAttrTable(9, f39688)

491 08/27/2001 15:24:09.660 SEV=8 AUTHDBG/60 RPT=9
AUTH_UnbindServer(3eb81a4, 0, 0)

492 08/27/2001 15:24:09.660 SEV=9 AUTHDBG/70 RPT=9
Auth Server e5d99c has been unbound from ACB 3eb81a4,
sessions = 0

493 08/27/2001 15:24:09.660 SEV=8 AUTHDBG/59 RPT=10
AUTH_BindServer(3eb81a4, 0, 0)

494 08/27/2001 15:24:09.660 SEV=9 AUTHDBG/69 RPT=10
Auth Server e5d99c has been bound to ACB 3eb81a4,
sessions = 1

495 08/27/2001 15:24:09.660 SEV=8 AUTHDBG/65 RPT=10
AUTH_CreateTimer(3eb81a4, 0, 0)

496 08/27/2001 15:24:09.660 SEV=9 AUTHDBG/72 RPT=10
Reply timer created: handle = 2F0017

497 08/27/2001 15:24:09.660 SEV=8 AUTHDBG/61 RPT=10
AUTH_BuildMsg(3eb81a4, 0, 0)

498 08/27/2001 15:24:09.660 SEV=8 AUTHDBG/64 RPT=10
AUTH_StartTimer(3eb81a4, 0, 0)

499 08/27/2001 15:24:09.660 SEV=9 AUTHDBG/73 RPT=10
Reply timer started: handle = 2F0017, timestamp = 903018,
timeout = 30000

500 08/27/2001 15:24:09.660 SEV=8 AUTHDBG/62 RPT=10
AUTH_SndRequest(3eb81a4, 0, 0)

501 08/27/2001 15:24:09.660 SEV=8 AUTHDBG/50 RPT=17
IntDB_Decode(2000d20, 42)

502 08/27/2001 15:24:09.660 SEV=10 AUTHDECODE/12 RPT=42
IntDB: Type = 1 (0x01) User-Name

503 08/27/2001 15:24:09.660 SEV=10 AUTHDECODE/13 RPT=42
IntDB: Length = 8 (0x08)

504 08/27/2001 15:24:09.660 SEV=10 AUTHDECODE/14 RPT=24

IntDB: Value (String) =

505 08/27/2001 15:24:09.660 SEV=10 AUTHDECODE/0 RPT=24
0000: 63726C67 726F7570 crlgroup

506 08/27/2001 15:24:09.660 SEV=8 AUTHDBG/47 RPT=17
IntDB_Xmt(3eb81a4)

507 08/27/2001 15:24:09.660 SEV=9 AUTHDBG/71 RPT=10
xmit_cnt = 1

508 08/27/2001 15:24:09.660 SEV=8 AUTHDBG/47 RPT=18
IntDB_Xmt(3eb81a4)

509 08/27/2001 15:24:09.760 SEV=8 AUTHDBG/49 RPT=9
IntDB_Match(3eb81a4, 2000eb0)

510 08/27/2001 15:24:09.760 SEV=8 AUTHDBG/63 RPT=10
AUTH_RcvReply(3eb81a4, 0, 0)

511 08/27/2001 15:24:09.760 SEV=8 AUTHDBG/50 RPT=18
IntDB_Decode(2000eb0, 42)

512 08/27/2001 15:24:09.760 SEV=10 AUTHDECODE/12 RPT=43
IntDB: Type = 1 (0x01) User-Name

513 08/27/2001 15:24:09.760 SEV=10 AUTHDECODE/13 RPT=43
IntDB: Length = 8 (0x08)

514 08/27/2001 15:24:09.760 SEV=10 AUTHDECODE/14 RPT=25
IntDB: Value (String) =

515 08/27/2001 15:24:09.760 SEV=10 AUTHDECODE/0 RPT=25
0000: 63726C67 726F7570 crlgroup

516 08/27/2001 15:24:09.760 SEV=8 AUTHDBG/48 RPT=9
IntDB_Rcv(3eb81a4)

517 08/27/2001 15:24:09.760 SEV=8 AUTHDBG/66 RPT=10
AUTH_DeleteTimer(3eb81a4, 0, 0)

518 08/27/2001 15:24:09.760 SEV=9 AUTHDBG/74 RPT=10
Reply timer stopped: handle = 2F0017, timestamp = 903028

519 08/27/2001 15:24:09.760 SEV=8 AUTHDBG/58 RPT=10
AUTH_Callback(3eb81a4, 0, 0)

**520 08/27/2001 15:24:09.760 SEV=6 AUTH/39 RPT=7 172.18.124.96
Authentication successful: handle = 9, server = Internal,
group = crlgroup**

521 08/27/2001 15:24:09.760 SEV=8 AUTHDBG/4 RPT=6
AUTH_GetAttrTable(9, 61afac)

**522 08/27/2001 15:24:09.760 SEV=7 IKEDBG/14 RPT=5 172.18.124.96
Group [crlgroup] User [ipsecuser]
Authentication configured for Internal**

523 08/27/2001 15:24:09.760 SEV=8 AUTHDBG/2 RPT=9
AUTH_Close(9)

**524 08/27/2001 15:24:09.760 SEV=4 IKE/52 RPT=2 172.18.124.96
Group [crlgroup] User [ipsecuser]
User (ipsecuser) authenticated.**

525 08/27/2001 15:24:09.760 SEV=9 IKEDBG/0 RPT=357 172.18.124.96

Group [crlgroup] User [ipsecuser]
constructing blank hash

526 08/27/2001 15:24:09.760 SEV=9 IKEDBG/0 RPT=358 172.18.124.96
Group [crlgroup] User [ipsecuser]
constructing qm hash

527 08/27/2001 15:24:09.760 SEV=8 IKEDBG/0 RPT=359 172.18.124.96
SENDING Message (msgid=bf771120) with payloads :
HDR + HASH (8) ... total length : 60

529 08/27/2001 15:24:09.760 SEV=8 AUTHDBG/60 RPT=10
AUTH_UnbindServer(3eb81a4, 0, 0)

530 08/27/2001 15:24:09.760 SEV=9 AUTHDBG/70 RPT=10
Auth Server e5d99c has been unbound from ACB 3eb81a4, sessions = 0

531 08/27/2001 15:24:09.760 SEV=8 AUTHDBG/10 RPT=9
AUTH_Int_FreeAuthCB(3eb81a4)

532 08/27/2001 15:24:09.760 SEV=9 AUTHDBG/19 RPT=9
instance = 10, clone_instance = 0

533 08/27/2001 15:24:09.760 SEV=7 AUTH/13 RPT=9
Authentication session closed: handle = 9

534 08/27/2001 15:24:09.770 SEV=8 IKEDBG/0 RPT=360 172.18.124.96
RECEIVED Message (msgid=bf771120) with payloads :
HDR + HASH (8) + ATTR (14) + NONE (0) ... total length : 56

536 08/27/2001 15:24:09.770 SEV=9 IKEDBG/1 RPT=49
process_attr(): Enter!

537 08/27/2001 15:24:09.770 SEV=9 IKEDBG/1 RPT=50
Processing cfg ACK attributes

538 08/27/2001 15:24:09.770 SEV=8 IKEDBG/0 RPT=361 172.18.124.96
RECEIVED Message (msgid=826be32d) with payloads :
HDR + HASH (8) + ATTR (14) + NONE (0) ... total length : 142

540 08/27/2001 15:24:09.770 SEV=9 IKEDBG/1 RPT=51
process_attr(): Enter!

541 08/27/2001 15:24:09.770 SEV=9 IKEDBG/1 RPT=52
Processing cfg Request attributes

542 08/27/2001 15:24:09.770 SEV=9 IKEDBG/1 RPT=53
Received IPV4 address request!

543 08/27/2001 15:24:09.770 SEV=9 IKEDBG/1 RPT=54
Received IPV4 net mask request!

544 08/27/2001 15:24:09.770 SEV=9 IKEDBG/1 RPT=55
Received DNS server address request!

545 08/27/2001 15:24:09.770 SEV=9 IKEDBG/1 RPT=56
Received WINS server address request!

546 08/27/2001 15:24:09.770 SEV=6 IKE/130 RPT=3 172.18.124.96
Group [crlgroup] User [ipsecuser]
Received unsupported transaction mode attribute: 5

548 08/27/2001 15:24:09.770 SEV=6 IKE/130 RPT=4 172.18.124.96
Group [crlgroup] User [ipsecuser]
Received unsupported transaction mode attribute: 7

550 08/27/2001 15:24:09.770 SEV=9 IKEDBG/1 RPT=57
Received Banner request!

551 08/27/2001 15:24:09.770 SEV=9 IKEDBG/1 RPT=58
Received Save PW request!

552 08/27/2001 15:24:09.770 SEV=9 IKEDBG/1 RPT=59
Received Default Domain request!

553 08/27/2001 15:24:09.770 SEV=9 IKEDBG/1 RPT=60
Received Split Tunnel Include request!

554 08/27/2001 15:24:09.770 SEV=9 IKEDBG/1 RPT=61
Received PFS request!

555 08/27/2001 15:24:09.770 SEV=4 IKE/131 RPT=2 172.18.124.96
Group [crlgroup] User [ipsecuser]
Received unknown transaction mode attribute: 28680

557 08/27/2001 15:24:09.770 SEV=9 IKEDBG/1 RPT=62
Received UDP Port request!

558 08/27/2001 15:24:09.770 SEV=9 IKEDBG/31 RPT=2 172.18.124.96
Group [crlgroup] User [ipsecuser]
Obtained IP addr (10.10.10.1) prior to initiating Mode Cfg
(XAuth enabled)

560 08/27/2001 15:24:09.770 SEV=9 IKEDBG/0 RPT=362 172.18.124.96
Group [crlgroup] User [ipsecuser]
constructing blank hash

561 08/27/2001 15:24:09.770 SEV=9 IKEDBG/0 RPT=363 172.18.124.96
0000: 00010004 0A0A0A01 F0010000 F0070000

562 08/27/2001 15:24:09.770 SEV=9 IKEDBG/0 RPT=364 172.18.124.96
Group [crlgroup] User [ipsecuser]
constructing qm hash

563 08/27/2001 15:24:09.770 SEV=8 IKEDBG/0 RPT=365 172.18.124.96
SENDING Message (msgid=826be32d) with payloads :
HDR + HASH (8) ... total length : 72

565 08/27/2001 15:24:09.810 SEV=9 IKEDBG/21 RPT=2 172.18.124.96
Group [crlgroup] User [ipsecuser]
Delay Quick Mode processing, Cert/Trans Exch/RM DSID in progress

567 08/27/2001 15:24:09.810 SEV=7 IKEDBG/22 RPT=2 172.18.124.96
Group [crlgroup] User [ipsecuser]
Resume Quick Mode processing, Cert/Trans Exch/RM DSID completed

569 08/27/2001 15:24:09.810 SEV=4 IKE/119 RPT=2 172.18.124.96
Group [crlgroup] User [ipsecuser]
PHASE 1 COMPLETED

570 08/27/2001 15:24:09.810 SEV=6 IKE/121 RPT=2 172.18.124.96
Keep-alive type for this connection: DPD

571 08/27/2001 15:24:09.810 SEV=7 IKEDBG/0 RPT=366 172.18.124.96
Group [crlgroup] User [ipsecuser]
Starting phase 1 rekey timer: 82080000 (ms)

572 08/27/2001 15:24:09.810 SEV=4 AUTH/21 RPT=6
User ipsecuser connected

573 08/27/2001 15:24:09.810 SEV=9 IKEDBG/0 RPT=367 172.18.124.96
Group [crlgroup] User [ipsecuser]

sending notify message

574 08/27/2001 15:24:09.810 SEV=9 IKEDBG/0 RPT=368 172.18.124.96
Group [crlgroup] User [ipsecuser]
constructing blank hash

575 08/27/2001 15:24:09.810 SEV=9 IKEDBG/0 RPT=369 172.18.124.96
Group [crlgroup] User [ipsecuser]
constructing qm hash

576 08/27/2001 15:24:09.810 SEV=8 IKEDBG/0 RPT=370 172.18.124.96
SENDING Message (msgid=b6a9bf96) with payloads :
HDR + HASH (8) ... total length : 88

578 08/27/2001 15:24:09.810 SEV=8 IKEDBG/0 RPT=371 172.18.124.96
RECEIVED Message (msgid=67342bd4) with payloads :
HDR + HASH (8) + SA (1) + NONCE (10) + ID (5) + ID (5) + NONE (0)
... total length : 792

581 08/27/2001 15:24:09.810 SEV=9 IKEDBG/0 RPT=372 172.18.124.96
Group [crlgroup] User [ipsecuser]
processing hash

582 08/27/2001 15:24:09.810 SEV=9 IKEDBG/0 RPT=373 172.18.124.96
Group [crlgroup] User [ipsecuser]
processing SA payload

583 08/27/2001 15:24:09.810 SEV=9 IKEDBG/1 RPT=63 172.18.124.96
Group [crlgroup] User [ipsecuser]
processing nonce payload

584 08/27/2001 15:24:09.810 SEV=9 IKEDBG/1 RPT=64 172.18.124.96
Group [crlgroup] User [ipsecuser]
Processing ID

585 08/27/2001 15:24:09.810 SEV=5 IKE/25 RPT=3 172.18.124.96
Group [crlgroup] User [ipsecuser]
Received remote Proxy Host data in ID Payload:
Address 10.10.10.1, Protocol 0, Port 0

588 08/27/2001 15:24:09.810 SEV=9 IKEDBG/1 RPT=65 172.18.124.96
Group [crlgroup] User [ipsecuser]
Processing ID

589 08/27/2001 15:24:09.810 SEV=5 IKE/24 RPT=2 172.18.124.96
Group [crlgroup] User [ipsecuser]
Received local Proxy Host data in ID Payload:
Address 172.18.124.132, Protocol 0, Port 0

592 08/27/2001 15:24:09.810 SEV=8 IKEDBG/0 RPT=374
QM IsRekeyed old sa not found by addr

593 08/27/2001 15:24:09.810 SEV=5 IKE/66 RPT=3 172.18.124.96
Group [crlgroup] User [ipsecuser]
IKE Remote Peer configured for SA: ESP-3DES-MD5

595 08/27/2001 15:24:09.810 SEV=9 IKEDBG/0 RPT=375 172.18.124.96
Group [crlgroup] User [ipsecuser]
processing IPSEC SA

596 08/27/2001 15:24:09.810 SEV=8 IKEDBG/0 RPT=376
Proposal # 2, Transform # 1, Type ESP, Id Triple-DES
Parsing received transform:
Phase 2 failure:
Mismatched attr types for class HMAC Algorithm:
Rcv'd: SHA

Cfg'd: MD5

600 08/27/2001 15:24:09.810 SEV=7 IKEDBG/27 RPT=3 172.18.124.96
Group [crlgroup] User [ipsecuser]
IPSec SA Proposal # 3, Transform # 1 acceptable

602 08/27/2001 15:24:09.810 SEV=7 IKEDBG/0 RPT=377 172.18.124.96
Group [crlgroup] User [ipsecuser]
IKE: requesting SPI!

603 08/27/2001 15:24:09.810 SEV=9 IPSECDBG/6 RPT=11
IPSEC key message parse - msgtype 6, len 192, vers 1, pid 00000000,
seq 3, err 0, type 2, mode 0, state 32, label 0, pad 0, spi 00000000,
encrKeyLen 0, hashKeyLen 0, ivlen 0, alg 0, hmacAlg 0, lifetype 0,
lifetime1 7631924, lifetime2 0, dsId 300

607 08/27/2001 15:24:09.810 SEV=9 IPSECDBG/1 RPT=37
Processing KEY_GETSPI msg!

608 08/27/2001 15:24:09.810 SEV=7 IPSECDBG/13 RPT=3
Reserved SPI 52918993

609 08/27/2001 15:24:09.810 SEV=8 IKEDBG/6 RPT=3
IKE got SPI from key engine: SPI = 0x03277ad1

610 08/27/2001 15:24:09.810 SEV=9 IKEDBG/0 RPT=378 172.18.124.96
Group [crlgroup] User [ipsecuser]
oakley constucting quick mode

611 08/27/2001 15:24:09.810 SEV=9 IKEDBG/0 RPT=379 172.18.124.96
Group [crlgroup] User [ipsecuser]
constructing blank hash

612 08/27/2001 15:24:09.810 SEV=9 IKEDBG/0 RPT=380 172.18.124.96
Group [crlgroup] User [ipsecuser]
constructing ISA_SA for ipsec

613 08/27/2001 15:24:09.810 SEV=5 IKE/75 RPT=3 172.18.124.96
Group [crlgroup] User [ipsecuser]
Overriding Initiator's IPSec rekeying duration from 2147483 to
28800 seconds

615 08/27/2001 15:24:09.810 SEV=9 IKEDBG/1 RPT=66 172.18.124.96
Group [crlgroup] User [ipsecuser]
constructing ipsec nonce payload

616 08/27/2001 15:24:09.810 SEV=9 IKEDBG/1 RPT=67 172.18.124.96
Group [crlgroup] User [ipsecuser]
constructing proxy ID

617 08/27/2001 15:24:09.810 SEV=7 IKEDBG/0 RPT=381 172.18.124.96
Group [crlgroup] User [ipsecuser]
Transmitting Proxy Id:
Remote host: 10.10.10.1 Protocol 0 Port 0
Local host: 172.18.124.132 Protocol 0 Port 0

621 08/27/2001 15:24:09.810 SEV=7 IKEDBG/0 RPT=382 172.18.124.96
Group [crlgroup] User [ipsecuser]
Sending RESPONDER LIFETIME notification to Initiator

623 08/27/2001 15:24:09.810 SEV=9 IKEDBG/0 RPT=383 172.18.124.96
Group [crlgroup] User [ipsecuser]
constructing qm hash

624 08/27/2001 15:24:09.820 SEV=8 IKEDBG/0 RPT=384 172.18.124.96
SENDING Message (msgid=67342bd4) with payloads :

HDR + HASH (8) ... total length : 172

626 08/27/2001 15:24:09.820 SEV=8 IKEDBG/0 RPT=385 172.18.124.96
RECEIVED Message (msgid=7102b770) with payloads :
HDR + HASH (8) + SA (1) + NONCE (10) + ID (5) + ID (5) + NONE (0)
... total length : 796

629 08/27/2001 15:24:09.820 SEV=9 IKEDBG/0 RPT=386 172.18.124.96
Group [crlgroup] User [ipsecuser]
processing hash

630 08/27/2001 15:24:09.820 SEV=9 IKEDBG/0 RPT=387 172.18.124.96
Group [crlgroup] User [ipsecuser]
processing SA payload

631 08/27/2001 15:24:09.820 SEV=9 IKEDBG/1 RPT=68 172.18.124.96
Group [crlgroup] User [ipsecuser]
processing nonce payload

632 08/27/2001 15:24:09.820 SEV=9 IKEDBG/1 RPT=69 172.18.124.96
Group [crlgroup] User [ipsecuser]
Processing ID

633 08/27/2001 15:24:09.820 SEV=5 IKE/25 RPT=4 172.18.124.96
Group [crlgroup] User [ipsecuser]
Received remote Proxy Host data in ID Payload:
Address 10.10.10.1, Protocol 0, Port 0

636 08/27/2001 15:24:09.820 SEV=9 IKEDBG/1 RPT=70 172.18.124.96
Group [crlgroup] User [ipsecuser]
Processing ID

637 08/27/2001 15:24:09.820 SEV=5 IKE/34 RPT=2 172.18.124.96
Group [crlgroup] User [ipsecuser]
Received local IP Proxy Subnet data in ID Payload:
Address 0.0.0.0, Mask 0.0.0.0, Protocol 0, Port 0

640 08/27/2001 15:24:09.820 SEV=8 IKEDBG/0 RPT=388
QM IsRekeyed old sa not found by addr

641 08/27/2001 15:24:09.820 SEV=5 IKE/66 RPT=4 172.18.124.96
Group [crlgroup] User [ipsecuser]
IKE Remote Peer configured for SA: ESP-3DES-MD5

643 08/27/2001 15:24:09.820 SEV=9 IKEDBG/0 RPT=389 172.18.124.96
Group [crlgroup] User [ipsecuser]
processing IPSEC SA

644 08/27/2001 15:24:09.820 SEV=8 IKEDBG/0 RPT=390
Proposal # 2, Transform # 1, Type ESP, Id Triple-DES
Parsing received transform:
Phase 2 failure:
Mismatched attr types for class HMAC Algorithm:
Rcv'd: SHA
Cfg'd: MD5

648 08/27/2001 15:24:09.820 SEV=7 IKEDBG/27 RPT=4 172.18.124.96
Group [crlgroup] User [ipsecuser]
IPSec SA Proposal # 3, Transform # 1 acceptable

650 08/27/2001 15:24:09.820 SEV=7 IKEDBG/0 RPT=391 172.18.124.96
Group [crlgroup] User [ipsecuser]
IKE: requesting SPI!

651 08/27/2001 15:24:09.820 SEV=9 IPSECDBG/6 RPT=12
IPSEC key message parse - msgtype 6, len 192, vers 1, pid 00000000,

seq 4, err 0, type 2, mode 0, state 32, label 0, pad 0, spi 00000000,
encrKeyLen 0, hashKeyLen 0, ivlen 0, alg 0, hmacAlg 0, lifetype 0,
lifetime1 7633504, lifetime2 0, dsId 300

655 08/27/2001 15:24:09.830 SEV=9 IPSECDBG/1 RPT=38
Processing KEY_GETSPI msg!

656 08/27/2001 15:24:09.830 SEV=7 IPSECDBG/13 RPT=4
Reserved SPI 1672252832

657 08/27/2001 15:24:09.830 SEV=8 IKEDBG/6 RPT=4
IKE got SPI from key engine: SPI = 0x63ac8da0

658 08/27/2001 15:24:09.830 SEV=9 IKEDBG/0 RPT=392 172.18.124.96
Group [crlgroup] User [ipsecuser]
oakley constructing quick mode

659 08/27/2001 15:24:09.830 SEV=9 IKEDBG/0 RPT=393 172.18.124.96
Group [crlgroup] User [ipsecuser]
constructing blank hash

660 08/27/2001 15:24:09.830 SEV=9 IKEDBG/0 RPT=394 172.18.124.96
Group [crlgroup] User [ipsecuser]
constructing ISA_SA for ipsec

661 08/27/2001 15:24:09.830 SEV=5 IKE/75 RPT=4 172.18.124.96
Group [crlgroup] User [ipsecuser]
Overriding Initiator's IPsec rekeying duration from 2147483 to
28800 seconds

663 08/27/2001 15:24:09.830 SEV=9 IKEDBG/1 RPT=71 172.18.124.96
Group [crlgroup] User [ipsecuser]
constructing ipsec nonce payload

664 08/27/2001 15:24:09.830 SEV=9 IKEDBG/1 RPT=72 172.18.124.96
Group [crlgroup] User [ipsecuser]
constructing proxy ID

665 08/27/2001 15:24:09.830 SEV=7 IKEDBG/0 RPT=395 172.18.124.96
Group [crlgroup] User [ipsecuser]
Transmitting Proxy Id:
Remote host: 10.10.10.1 Protocol 0 Port 0
Local subnet: 0.0.0.0 mask 0.0.0.0 Protocol 0 Port 0

669 08/27/2001 15:24:09.830 SEV=7 IKEDBG/0 RPT=396 172.18.124.96
Group [crlgroup] User [ipsecuser]
Sending RESPONDER LIFETIME notification to Initiator

671 08/27/2001 15:24:09.830 SEV=9 IKEDBG/0 RPT=397 172.18.124.96
Group [crlgroup] User [ipsecuser]
constructing qm hash

672 08/27/2001 15:24:09.830 SEV=8 IKEDBG/0 RPT=398 172.18.124.96
SENDING Message (msgid=7102b770) with payloads :
HDR + HASH (8) ... total length : 176

674 08/27/2001 15:24:09.830 SEV=8 IKEDBG/0 RPT=399 172.18.124.96
RECEIVED Message (msgid=67342bd4) with payloads :
HDR + HASH (8) + NONE (0) ... total length : 48

676 08/27/2001 15:24:09.830 SEV=9 IKEDBG/0 RPT=400 172.18.124.96
Group [crlgroup] User [ipsecuser]
processing hash

677 08/27/2001 15:24:09.830 SEV=9 IKEDBG/0 RPT=401 172.18.124.96
Group [crlgroup] User [ipsecuser]

loading all IPSEC SAs

678 08/27/2001 15:24:09.830 SEV=8 AUTHDBG/2 RPT=10
AUTH_Close(6)

679 08/27/2001 15:24:09.830 SEV=9 IKEDBG/1 RPT=73 172.18.124.96
Group [crlgroup] User [ipsecuser]
Generating Quick Mode Key!

680 08/27/2001 15:24:09.830 SEV=9 IKEDBG/1 RPT=74 172.18.124.96
Group [crlgroup] User [ipsecuser]
Generating Quick Mode Key!

681 08/27/2001 15:24:09.830 SEV=7 IKEDBG/0 RPT=402 172.18.124.96
Group [crlgroup] User [ipsecuser]
Loading host:
 Dst: 172.18.124.132
 Src: 10.10.10.1

683 08/27/2001 15:24:09.830 SEV=4 IKE/49 RPT=3 172.18.124.96
Group [crlgroup] User [ipsecuser]
Security negotiation complete for User (ipsecuser)
Responder, Inbound SPI = 0x03277ad1, Outbound SPI = 0x45e0f379

686 08/27/2001 15:24:09.830 SEV=9 IPSECDBG/6 RPT=13
IPSEC key message parse - msgtype 1, len 604, vers 1, pid 00000000,
seq 0, err 0, type 2, mode 1, state 64, label 0, pad 0, spi 45e0f379,
encrKeyLen 24, hashKeyLen 16, ivlen 8, alg 2, hmacAlg 3, lifetype 0,
lifetime1 7633504, lifetime2 0, dsId 0

690 08/27/2001 15:24:09.830 SEV=9 IPSECDBG/1 RPT=39
Processing KEY_ADD msg!

691 08/27/2001 15:24:09.840 SEV=9 IPSECDBG/1 RPT=40
key_msghdr2secassoc(): Enter

692 08/27/2001 15:24:09.840 SEV=7 IPSECDBG/1 RPT=41
No USER filter configured

693 08/27/2001 15:24:09.840 SEV=9 IPSECDBG/1 RPT=42
KeyProcessAdd: Enter

694 08/27/2001 15:24:09.840 SEV=8 IPSECDBG/1 RPT=43
KeyProcessAdd: Adding outbound SA

695 08/27/2001 15:24:09.840 SEV=8 IPSECDBG/1 RPT=44
KeyProcessAdd: src 172.18.124.132 mask 0.0.0.0, dst 10.10.10.1
mask 0.0.0.0

696 08/27/2001 15:24:09.840 SEV=8 IPSECDBG/1 RPT=45
KeyProcessAdd: FilterIpssecAddIkeSa success

697 08/27/2001 15:24:09.840 SEV=9 IPSECDBG/6 RPT=14
IPSEC key message parse - msgtype 3, len 326, vers 1, pid 00000000,
seq 0, err 0, type 2, mode 1, state 32, label 0, pad 0, spi 03277ad1,
encrKeyLen 24, hashKeyLen 16, ivlen 8, alg 2, hmacAlg 3, lifetype 0,
lifetime1 7631924, lifetime2 0, dsId 0

701 08/27/2001 15:24:09.840 SEV=9 IPSECDBG/1 RPT=46
Processing KEY_UPDATE msg!

702 08/27/2001 15:24:09.840 SEV=9 IPSECDBG/1 RPT=47
Update inbound SA addresses

703 08/27/2001 15:24:09.840 SEV=9 IPSECDBG/1 RPT=48
key_msghdr2secassoc(): Enter

704 08/27/2001 15:24:09.840 SEV=7 IPSECDBG/1 RPT=49
No USER filter configured

705 08/27/2001 15:24:09.840 SEV=9 IPSECDBG/1 RPT=50
KeyProcessUpdate: Enter

706 08/27/2001 15:24:09.840 SEV=8 IPSECDBG/1 RPT=51
KeyProcessUpdate: success

707 08/27/2001 15:24:09.840 SEV=8 IKEDBG/7 RPT=3
IKE got a KEY_ADD msg for SA: SPI = 0x45e0f379

708 08/27/2001 15:24:09.840 SEV=8 IKEDBG/0 RPT=403
pitcher: rcv KEY_UPDATE, spi 0x3277ad1

709 08/27/2001 15:24:09.840 SEV=4 IKE/120 RPT=3 172.18.124.96
Group [crlgroup] User [ipsecuser]
PHASE 2 COMPLETED (msgid=67342bd4)

710 08/27/2001 15:24:09.840 SEV=8 AUTHDBG/10 RPT=10
AUTH_Int_FreeAuthCB(3eb7914)

711 08/27/2001 15:24:09.840 SEV=9 AUTHDBG/19 RPT=10
instance = 7, clone_instance = 0

712 08/27/2001 15:24:09.840 SEV=7 AUTH/13 RPT=10
Authentication session closed: handle = 6

713 08/27/2001 15:24:10.480 SEV=8 IKEDBG/0 RPT=404 172.18.124.96
RECEIVED Message (msgid=7102b770) with payloads :
HDR + HASH (8) + NONE (0) ... total length : 48

715 08/27/2001 15:24:10.490 SEV=9 IKEDBG/0 RPT=405 172.18.124.96
Group [crlgroup] User [ipsecuser]
processing hash

716 08/27/2001 15:24:10.490 SEV=9 IKEDBG/0 RPT=406 172.18.124.96
Group [crlgroup] User [ipsecuser]
loading all IPSEC SAs

717 08/27/2001 15:24:10.490 SEV=9 IKEDBG/1 RPT=75 172.18.124.96
Group [crlgroup] User [ipsecuser]
Generating Quick Mode Key!

718 08/27/2001 15:24:10.490 SEV=9 IKEDBG/1 RPT=76 172.18.124.96
Group [crlgroup] User [ipsecuser]
Generating Quick Mode Key!

719 08/27/2001 15:24:10.490 SEV=7 IKEDBG/0 RPT=407 172.18.124.96
Group [crlgroup] User [ipsecuser]
Loading subnet:
 Dst: 0.0.0.0 mask: 0.0.0.0
 Src: 10.10.10.1

721 08/27/2001 15:24:10.490 SEV=4 IKE/49 RPT=4 172.18.124.96
Group [crlgroup] User [ipsecuser]
Security negotiation complete for User (ipsecuser)
Responder, Inbound SPI = 0x63ac8da0, Outbound SPI = 0x4a1a91ee

724 08/27/2001 15:24:10.490 SEV=9 IPSECDBG/6 RPT=15
IPSEC key message parse - msgtype 1, len 604, vers 1, pid 00000000,
seq 0, err 0, type 2, mode 1, state 64, label 0, pad 0, spi 4a1a91ee,
encrKeyLen 24, hashKeyLen 16, ivlen 8, alg 2, hmacAlg 3, lifetype 0,
lifetime1 7633504, lifetime2 0, dsId 0

728 08/27/2001 15:24:10.490 SEV=9 IPSECDBG/1 RPT=52
Processing KEY_ADD msg!

729 08/27/2001 15:24:10.490 SEV=9 IPSECDBG/1 RPT=53
key_msghdr2secassoc(): Enter

730 08/27/2001 15:24:10.490 SEV=7 IPSECDBG/1 RPT=54
No USER filter configured

731 08/27/2001 15:24:10.490 SEV=9 IPSECDBG/1 RPT=55
KeyProcessAdd: Enter

732 08/27/2001 15:24:10.490 SEV=8 IPSECDBG/1 RPT=56
KeyProcessAdd: Adding outbound SA

733 08/27/2001 15:24:10.490 SEV=8 IPSECDBG/1 RPT=57
KeyProcessAdd: src 0.0.0.0 mask 255.255.255.255, dst 10.10.10.1
mask 0.0.0.0

734 08/27/2001 15:24:10.490 SEV=8 IPSECDBG/1 RPT=58
KeyProcessAdd: FilterIpssecAddIkeSa success

735 08/27/2001 15:24:10.490 SEV=9 IPSECDBG/6 RPT=16
IPSEC key message parse - msgtype 3, len 326, vers 1, pid 00000000,
seq 0, err 0, type 2, mode 1, state 32, label 0, pad 0, spi 63ac8da0,
encrKeyLen 24, hashKeyLen 16, ivlen 8, alg 2, hmacAlg 3, lifetype 0,
lifetime1 7631924, lifetime2 0, dsId 0

739 08/27/2001 15:24:10.490 SEV=9 IPSECDBG/1 RPT=59
Processing KEY_UPDATE msg!

740 08/27/2001 15:24:10.490 SEV=9 IPSECDBG/1 RPT=60
Update inbound SA addresses

741 08/27/2001 15:24:10.490 SEV=9 IPSECDBG/1 RPT=61
key_msghdr2secassoc(): Enter

742 08/27/2001 15:24:10.490 SEV=7 IPSECDBG/1 RPT=62
No USER filter configured

743 08/27/2001 15:24:10.490 SEV=9 IPSECDBG/1 RPT=63
KeyProcessUpdate: Enter

744 08/27/2001 15:24:10.490 SEV=8 IPSECDBG/1 RPT=64
KeyProcessUpdate: success

745 08/27/2001 15:24:10.490 SEV=8 IKEDBG/7 RPT=4
IKE got a KEY_ADD msg for SA: SPI = 0x4a1a91ee

746 08/27/2001 15:24:10.490 SEV=8 IKEDBG/0 RPT=408
pitcher: rcv KEY_UPDATE, spi 0x63ac8da0

747 08/27/2001 15:24:10.490 SEV=4 IKE/120 RPT=4 172.18.124.96
Group [crlgroup] User [ipsecuser]
PHASE 2 COMPLETED (msgid=7102b770)

748 08/27/2001 15:24:13.390 SEV=8 IKEDBG/0 RPT=409 172.18.124.96
RECEIVED Message (msgid=75c17db8) with payloads :
HDR + HASH (8) + DELETE (12) + NONE (0) ... total length : 68

750 08/27/2001 15:24:13.390 SEV=9 IKEDBG/0 RPT=410 172.18.124.96
Group [crlgroup] User [ipsecuser]
processing hash

751 08/27/2001 15:24:13.390 SEV=9 IKEDBG/0 RPT=411
processing delete

752 08/27/2001 15:24:13.390 SEV=5 IKE/50 RPT=3 172.18.124.96
Group [crlgroup] User [ipsecuser]
Connection terminated for peer ipsecuser (Peer Terminate)
Remote Proxy 10.10.10.1, Local Proxy 0.0.0.0

755 08/27/2001 15:24:13.390 SEV=7 IKEDBG/9 RPT=3 172.18.124.96
Group [crlgroup] User [ipsecuser]
IKE Deleting SA: Remote Proxy 10.10.10.1, Local Proxy 0.0.0.0

757 08/27/2001 15:24:13.390 SEV=9 IPSECDBG/6 RPT=17
IPSEC key message parse - msgtype 2, len 258, vers 1, pid 00000000,
seq 0, err 0, type 2, mode 0, state 32, label 0, pad 0, spi 63ac8da0,
encrKeyLen 0, hashKeyLen 0, ivlen 0, alg 0, hmacAlg 0, lifetype 0,
lifetime1 7633504, lifetime2 0, dsId 0

761 08/27/2001 15:24:13.390 SEV=9 IPSECDBG/1 RPT=65
Processing KEY_DELETE msg!

762 08/27/2001 15:24:13.390 SEV=9 IPSECDBG/6 RPT=18
IPSEC key message parse - msgtype 2, len 258, vers 1, pid 00000000,
seq 0, err 0, type 2, mode 0, state 64, label 0, pad 0, spi 4ala9lee,
encrKeyLen 0, hashKeyLen 0, ivlen 0, alg 0, hmacAlg 0, lifetype 0,
lifetime1 7631924, lifetime2 0, dsId 0

766 08/27/2001 15:24:13.390 SEV=9 IPSECDBG/1 RPT=66
Processing KEY_DELETE msg!

767 08/27/2001 15:24:13.390 SEV=9 IPSECDBG/1 RPT=67
key_msghdr2secassoc(): Enter

768 08/27/2001 15:24:13.390 SEV=7 IPSECDBG/1 RPT=68
No USER filter configured

769 08/27/2001 15:24:13.390 SEV=8 IKEDBG/0 RPT=412
pitcher: received key delete msg, spi 0x63ac8da0

770 08/27/2001 15:24:13.390 SEV=8 IKEDBG/0 RPT=413
pitcher: received key delete msg, spi 0x4ala9lee

771 08/27/2001 15:24:13.400 SEV=8 IKEDBG/0 RPT=414 172.18.124.96
RECEIVED Message (msgid=8c5dbd18) with payloads :
HDR + HASH (8) + DELETE (12) + NONE (0) ... total length : 68

773 08/27/2001 15:24:13.400 SEV=9 IKEDBG/0 RPT=415 172.18.124.96
Group [crlgroup] User [ipsecuser]
processing hash

774 08/27/2001 15:24:13.400 SEV=9 IKEDBG/0 RPT=416
processing delete

775 08/27/2001 15:24:13.400 SEV=5 IKE/50 RPT=4 172.18.124.96
Group [crlgroup] User [ipsecuser]
Connection terminated for peer ipsecuser (Peer Terminate)
Remote Proxy 10.10.10.1, Local Proxy 172.18.124.132

778 08/27/2001 15:24:13.400 SEV=7 IKEDBG/9 RPT=4 172.18.124.96
Group [crlgroup] User [ipsecuser]
IKE Deleting SA: Remote Proxy 10.10.10.1, Local Proxy 172.18.124.132

780 08/27/2001 15:24:13.400 SEV=9 IKEDBG/0 RPT=417 172.18.124.96
Group [crlgroup] User [ipsecuser]
IKE SA MM:17040521 rcv'd Terminate: state MM_ACTIVE
flags 0x0061f042, refcnt 1, tuncnt 0

783 08/27/2001 15:24:13.400 SEV=9 IKEDBG/0 RPT=418 172.18.124.96

Group [crlgroup] User [ipsecuser]
IKE SA MM:17040521 terminating:
flags 0x0061f002, refcnt 0, tuncnt 0

785 08/27/2001 15:24:13.400 SEV=9 IKEDBG/0 RPT=419
sending delete message

786 08/27/2001 15:24:13.400 SEV=9 IKEDBG/0 RPT=420 172.18.124.96
Group [crlgroup] User [ipsecuser]
constructing blank hash

787 08/27/2001 15:24:13.400 SEV=9 IKEDBG/0 RPT=421
constructing delete payload

788 08/27/2001 15:24:13.400 SEV=9 IKEDBG/0 RPT=422 172.18.124.96
Group [crlgroup] User [ipsecuser]
constructing qm hash

789 08/27/2001 15:24:13.400 SEV=8 IKEDBG/0 RPT=423 172.18.124.96
SENDING Message (msgid=37dd4154) with payloads :
HDR + HASH (8) ... total length : 76

791 08/27/2001 15:24:13.400 SEV=9 IPSECDBG/6 RPT=19
IPSEC key message parse - msgtype 2, len 258, vers 1, pid 00000000,
seq 0, err 0, type 2, mode 0, state 32, label 0, pad 0, spi 03277ad1,
encrKeyLen 0, hashKeyLen 0, ivlen 0, alg 0, hmacAlg 0, lifetype 0,
lifetime1 7633504, lifetime2 0, dsId 0

795 08/27/2001 15:24:13.400 SEV=9 IPSECDBG/1 RPT=69
Processing KEY_DELETE msg!

796 08/27/2001 15:24:13.400 SEV=4 AUTH/27 RPT=2 10.10.10.1
User [ipsecuser] disconnected:
Duration: 0:00:03
Bytes xmt: 0
Bytes rcv: 0
Reason: User Requested

798 08/27/2001 15:24:13.400 SEV=9 IPSECDBG/6 RPT=20
IPSEC key message parse - msgtype 2, len 258, vers 1, pid 00000000,
seq 0, err 0, type 2, mode 0, state 64, label 0, pad 0, spi 45e0f379,
encrKeyLen 0, hashKeyLen 0, ivlen 0, alg 0, hmacAlg 0, lifetype 0,
lifetime1 7631924, lifetime2 0, dsId 0

802 08/27/2001 15:24:13.400 SEV=9 IPSECDBG/1 RPT=70
Processing KEY_DELETE msg!

803 08/27/2001 15:24:13.400 SEV=9 IPSECDBG/1 RPT=71
key_msghdr2secassoc(): Enter

804 08/27/2001 15:24:13.400 SEV=7 IPSECDBG/1 RPT=72
No USER filter configured

805 08/27/2001 15:24:13.400 SEV=8 IKEDBG/0 RPT=424
pitcher: received key delete msg, spi 0x3277ad1

806 08/27/2001 15:24:13.400 SEV=8 IKEDBG/0 RPT=425
pitcher: received key delete msg, spi 0x45e0f379

807 08/27/2001 15:24:13.400 SEV=6 IKE/38 RPT=3 172.18.124.96
Header invalid, missing SA payload! (next payload = 8)

808 08/27/2001 15:40:47.290 SEV=4 AUTH/28 RPT=4
Management user admin disconnected: duration 0:30:09

809 08/27/2001 15:44:49.770 SEV=3 HTTP/7 RPT=3 172.18.124.96

HTTP 401 Unauthorized: Authorization Failed

810 08/27/2001 15:44:57.200 SEV=5 AUTH/35 RPT=5
User [admin] attempted ADMIN logon.. !

811 08/27/2001 15:44:57.200 SEV=4 AUTH/21 RPT=7
User admin connected

812 08/27/2001 15:44:57.200 SEV=4 HTTP/47 RPT=5 172.18.124.96
New administrator login: admin.

813 08/27/2001 15:51:51.510 SEV=1 REBOOT/1 RPT=1
Reboot scheduled immediately.

814 08/27/2001 15:51:51.510 SEV=4 AUTH/28 RPT=5
Management user admin disconnected: duration 0:06:54

815 08/27/2001 15:52:17.610 SEV=4 CONFIG/17 RPT=4
Done writing configuration file, Success.

816 08/27/2001 15:52:17.610 SEV=1 REBOOT/6 RPT=1
Rebooting VPN 3000 Concentrator Series now.

1 08/27/2001 15:52:57.240 SEV=1 EVENT/37 RPT=1
Reset Reason : 2 (Hardware-Reset)

2 08/27/2001 15:52:52.410 SEV=5 CAPI/7 RPT=1
CAPI - SEP Slot #1 disabled

3 08/27/2001 15:52:56.100 SEV=4 CONFIG/15 RPT=1
READ header End not found.

4 08/27/2001 15:52:57.280 SEV=4 HTTP/28 RPT=1
HTTP server starting.

5 08/27/2001 15:52:57.650 SEV=3 IP/1 RPT=1
IP Interface 1 status changed to Link Up.

6 08/27/2001 15:52:57.670 SEV=3 IP/1 RPT=2
IP Interface 2 status changed to Link Up.

7 08/27/2001 15:52:57.960 SEV=3 IP/2 RPT=1
IP Interface 1 status changed to Link Down.

8 08/27/2001 15:52:57.960 SEV=3 IP/2 RPT=2
IP Interface 2 status changed to Link Down.

9 08/27/2001 15:52:59.960 SEV=3 IP/1 RPT=3
IP Interface 1 status changed to Link Up.

10 08/27/2001 15:53:02.680 SEV=5 SSL/5 RPT=1
SSL Initialized.

11 08/27/2001 15:53:02.680 SEV=4 TELNETDBG/1 RPT=1
Telnetd started

12 08/27/2001 15:53:02.680 SEV=4 TELNET/3 RPT=1
Telnetd server running

13 08/27/2001 15:53:02.690 SEV=8 AUTHDBG/13 RPT=1
AUTH_MgmtInitServer(6c5800, 1501)

14 08/27/2001 15:53:02.690 SEV=8 AUTHDBG/95 RPT=1
LdapApiOpen(eee2bc)

15 08/27/2001 15:53:02.690 SEV=8 AUTHDBG/13 RPT=2

```

AUTH_MgmtInitServer(6c5800, 1)

16 08/27/2001 15:53:02.690 SEV=8 AUTHDBG/8 RPT=1
AUTH_TerminateSessions(e3599c)

17 08/27/2001 15:53:02.700 SEV=4 PPTP/25 RPT=1
Sockets listening for PPTP connections on socket 1

18 08/27/2001 15:53:02.710 SEV=7 CERT/36 RPT=1
Load trusted certificate: filename = SIGN0013.PEM

19 08/27/2001 15:53:02.730 SEV=7 CERT/37 RPT=1
Load identity certificate: filename = CERT0005.PEM

20 08/27/2001 15:53:02.810 SEV=8 AUTHDBG/44 RPT=1
IntDB_Open(e3599c)

21 08/27/2001 15:53:02.810 SEV=4 AUTH/15 RPT=1
Server name = Internal, type = Internal, status = Active

22 08/27/2001 15:53:02.810 SEV=9 AUTHDBG/17 RPT=1
(Auth) index_max = 2

23 08/27/2001 15:53:02.810 SEV=8 AUTHDBG/13 RPT=3
AUTH_MgmtInitServer(6c5800, 2)

24 08/27/2001 15:53:02.810 SEV=8 AUTHDBG/8 RPT=2
AUTH_TerminateSessions(e35b94)

25 08/27/2001 15:53:02.910 SEV=8 AUTHDBG/24 RPT=1
Radius_Open(e35b94)

26 08/27/2001 15:53:02.910 SEV=7 AUTH/1 RPT=1
UDP socket opened: 1, server = 172.18.124.109

27 08/27/2001 15:53:02.910 SEV=7 AUTH/1 RPT=2
UDP socket opened: 1, server = 172.18.124.109

28 08/27/2001 15:53:02.910 SEV=4 AUTH/15 RPT=2
Server name = 172.18.124.109, type = RADIUS, status = Active

29 08/27/2001 15:53:02.910 SEV=9 AUTHDBG/17 RPT=2
(Auth) index_max = 3

30 08/27/2001 15:53:03.730 SEV=4 SSH/2 RPT=1
SSH server starting.

31 08/27/2001 16:06:29.890 SEV=5 AUTH/35 RPT=1
User [ admin ] attempted ADMIN logon.. !

32 08/27/2001 16:06:29.890 SEV=4 AUTH/21 RPT=1
User admin connected

33 08/27/2001 16:06:29.890 SEV=4 HTTP/47 RPT=1 172.18.124.96
New administrator login: admin.

```

VPN Client

```

228 16:13:15.088 08/27/01 Sev=Info/6 DIALER/0x63300002
Initiating connection.

229 16:13:15.098 08/27/01 Sev=Info/4 CM/0x63100002
Begin connection process

230 16:13:15.439 08/27/01 Sev=Info/4 CM/0x63100004

```

Establish secure connection using Ethernet

231 16:13:15.439 08/27/01 Sev=Info/4 CM/0x63100026
Attempt connection with server "172.18.124.132"

232 16:13:15.439 08/27/01 Sev=Info/6 IKE/0x6300003B
Attempting to establish a connection with 172.18.124.132.

233 16:13:15.959 08/27/01 Sev=Info/4 IKE/0x63000013
SENDING >>> ISAKMP OAK MM (SA, VID, VID, VID) to 172.18.124.132

234 16:13:15.969 08/27/01 Sev=Info/4 IPSEC/0x63700014
Deleted all keys

235 16:13:15.969 08/27/01 Sev=Info/5 IKE/0x6300002F
Received ISAKMP packet: peer = 172.18.124.132

236 16:13:15.969 08/27/01 Sev=Info/4 IKE/0x63000014
RECEIVING <<< ISAKMP OAK MM (SA) from 172.18.124.132

237 16:13:16.019 08/27/01 Sev=Info/4 IKE/0x63000013
SENDING >>> ISAKMP OAK MM (KE, NON) to 172.18.124.132

238 16:13:16.059 08/27/01 Sev=Info/5 IKE/0x6300002F
Received ISAKMP packet: peer = 172.18.124.132

239 16:13:16.059 08/27/01 Sev=Info/4 IKE/0x63000014
RECEIVING <<< ISAKMP OAK MM (KE, NON, CERT_REQ, VID, VID, VID, VID)
from 172.18.124.132

240 16:13:16.059 08/27/01 Sev=Info/5 IKE/0x63000059
Vendor ID payload = 12F5F28C457168A9702D9FE274CC0100

241 16:13:16.059 08/27/01 Sev=Info/5 IKE/0x63000001
Peer is a Cisco-Unity compliant peer

242 16:13:16.059 08/27/01 Sev=Info/5 IKE/0x63000059
Vendor ID payload = 09002689DFD6B712

243 16:13:16.059 08/27/01 Sev=Info/5 IKE/0x63000059
Vendor ID payload = 9A21C90230105BB437E5BE5FAF5229A5

244 16:13:16.059 08/27/01 Sev=Info/5 IKE/0x63000059
Vendor ID payload = 1F07F70EAA6514D3B0FA96542A500300

245 16:13:16.109 08/27/01 Sev=Info/4 IKE/0x63000013
SENDING >>> ISAKMP OAK MM *(ID, CERT, CERT_REQ, SIG,
NOTIFY:STATUS_INITIAL_CONTACT) to 172.18.124.132

246 16:13:16.480 08/27/01 Sev=Info/5 IKE/0x6300002F
Received ISAKMP packet: peer = 172.18.124.132

247 16:13:16.480 08/27/01 Sev=Info/4 IKE/0x63000014
RECEIVING <<< ISAKMP OAK MM *(ID, CERT, SIG, VID) from 172.18.124.132

248 16:13:16.590 08/27/01 Sev=Info/5 IKE/0x63000059
Vendor ID payload = AFCAD71368A1F1C96B8696FC77570100

249 16:13:16.590 08/27/01 Sev=Info/5 IKE/0x63000001
Peer supports DPD

250 16:13:16.590 08/27/01 Sev=Info/5 IKE/0x6300002F
Received ISAKMP packet: peer = 172.18.124.132

251 16:13:16.590 08/27/01 Sev=Info/4 IKE/0x63000014
RECEIVING <<< ISAKMP OAK TRANS *(HASH, ATTR) from 172.18.124.132

252 16:13:16.590 08/27/01 Sev=Info/4 CM/0x63100015
Launch xAuth application

253 16:13:20.075 08/27/01 Sev=Info/4 CM/0x63100017
xAuth application returned

254 16:13:20.075 08/27/01 Sev=Info/4 IKE/0x63000013
SENDING >>> ISAKMP OAK TRANS *(HASH, ATTR) to 172.18.124.132

255 16:13:20.376 08/27/01 Sev=Info/5 IKE/0x6300002F
Received ISAKMP packet: peer = 172.18.124.132

256 16:13:20.376 08/27/01 Sev=Info/4 IKE/0x63000014
RECEIVING <<< ISAKMP OAK TRANS *(HASH, ATTR) from 172.18.124.132

**257 16:13:20.376 08/27/01 Sev=Info/4 CM/0x6310000E
Established Phase 1 SA. 1 Phase 1 SA in the system**

258 16:13:20.376 08/27/01 Sev=Info/4 IKE/0x63000013
SENDING >>> ISAKMP OAK TRANS *(HASH, ATTR) to 172.18.124.132

259 16:13:20.376 08/27/01 Sev=Info/4 IKE/0x63000013
SENDING >>> ISAKMP OAK TRANS *(HASH, ATTR) to 172.18.124.132

260 16:13:20.386 08/27/01 Sev=Info/5 IKE/0x6300002F
Received ISAKMP packet: peer = 172.18.124.132

261 16:13:20.386 08/27/01 Sev=Info/4 IKE/0x63000014
RECEIVING <<< ISAKMP OAK TRANS *(HASH, ATTR) from 172.18.124.132

262 16:13:20.386 08/27/01 Sev=Info/5 IKE/0x63000010
MODE_CFG_REPLY: Attribute = INTERNAL_IPV4_ADDRESS: , value = 10.10.10.1

263 16:13:20.386 08/27/01 Sev=Info/5 IKE/0x6300000D
MODE_CFG_REPLY: Attribute = MODECFG_UNITY_SAVEPWD: , value = 0x00000000

264 16:13:20.386 08/27/01 Sev=Info/5 IKE/0x6300000D
MODE_CFG_REPLY: Attribute = MODECFG_UNITY_PFS: , value = 0x00000000

265 16:13:20.396 08/27/01 Sev=Info/4 CM/0x63100019
Mode Config data received

266 16:13:20.436 08/27/01 Sev=Info/5 IKE/0x63000055
Received a key request from Driver for IP address 172.18.124.132,
GW IP = 172.18.124.132

267 16:13:20.436 08/27/01 Sev=Info/4 IKE/0x63000013
SENDING >>> ISAKMP OAK QM *(HASH, SA, NON, ID, ID) to 172.18.124.132

268 16:13:20.436 08/27/01 Sev=Info/5 IKE/0x63000055
Received a key request from Driver for IP address 10.10.10.255,
GW IP = 172.18.124.132

269 16:13:20.436 08/27/01 Sev=Info/4 IKE/0x63000013
SENDING >>> ISAKMP OAK QM *(HASH, SA, NON, ID, ID) to 172.18.124.132

270 16:13:20.446 08/27/01 Sev=Info/5 IKE/0x6300002F
Received ISAKMP packet: peer = 172.18.124.132

271 16:13:20.446 08/27/01 Sev=Info/4 IKE/0x63000014
RECEIVING <<< ISAKMP OAK INFO *(HASH, NOTIFY:STATUS_RESP_LIFETIME)
from 172.18.124.132

**272 16:13:20.446 08/27/01 Sev=Info/5 IKE/0x63000044
RESPONDER-LIFETIME notify has value of 86400 seconds**

273 16:13:20.446 08/27/01 Sev=Info/5 IKE/0x63000046
**This SA has already been alive for 5 seconds, setting expiry to
86395 seconds from now**

274 16:13:20.446 08/27/01 Sev=Info/5 IKE/0x6300002F
Received ISAKMP packet: peer = 172.18.124.132

275 16:13:20.446 08/27/01 Sev=Info/4 IKE/0x63000014
RECEIVING <<< ISAKMP OAK QM *(HASH, SA, NON, ID, ID,
NOTIFY:STATUS_RESP_LIFETIME) from 172.18.124.132

276 16:13:20.446 08/27/01 Sev=Info/5 IKE/0x63000044
RESPONDER-LIFETIME notify has value of 28800 seconds

277 16:13:20.446 08/27/01 Sev=Info/4 IKE/0x63000013
SENDING >>> ISAKMP OAK QM *(HASH) to 172.18.124.132

278 16:13:20.446 08/27/01 Sev=Info/5 IKE/0x63000058
Loading IPsec SA (Message ID = 0x48935FCE OUTBOUND SPI = 0x3943F7FF
INBOUND SPI = 0x65B16829)

279 16:13:20.446 08/27/01 Sev=Info/5 IKE/0x63000025
Loaded OUTBOUND ESP SPI: 0x3943F7FF

280 16:13:20.446 08/27/01 Sev=Info/5 IKE/0x63000026
Loaded INBOUND ESP SPI: 0x65B16829

**281 16:13:20.446 08/27/01 Sev=Info/4 CM/0x6310001A
One secure connection established**

**282 16:13:20.496 08/27/01 Sev=Info/6 DIALER/0x63300003
Connection established.**

283 16:13:20.556 08/27/01 Sev=Info/6 DIALER/0x63300008
MAPI32 Information - Outlook not default mail client

284 16:13:21.097 08/27/01 Sev=Info/5 IKE/0x6300002F
Received ISAKMP packet: peer = 172.18.124.132

285 16:13:21.097 08/27/01 Sev=Info/4 IKE/0x63000014
RECEIVING <<< ISAKMP OAK QM *(HASH, SA, NON, ID, ID,
NOTIFY:STATUS_RESP_LIFETIME) from 172.18.124.132

286 16:13:21.097 08/27/01 Sev=Info/5 IKE/0x63000044
RESPONDER-LIFETIME notify has value of 28800 seconds

287 16:13:21.097 08/27/01 Sev=Info/4 IKE/0x63000013
SENDING >>> ISAKMP OAK QM *(HASH) to 172.18.124.132

288 16:13:21.097 08/27/01 Sev=Info/5 IKE/0x63000058
Loading IPsec SA (Message ID = 0x1FE7AC28 OUTBOUND SPI = 0x557D6E94
INBOUND SPI = 0x8A8A034D)

289 16:13:21.107 08/27/01 Sev=Info/5 IKE/0x63000025
Loaded OUTBOUND ESP SPI: 0x557D6E94

290 16:13:21.107 08/27/01 Sev=Info/5 IKE/0x63000026
Loaded INBOUND ESP SPI: 0x8A8A034D

291 16:13:21.107 08/27/01 Sev=Info/4 CM/0x63100022
Additional Phase 2 SA established.

292 16:13:21.107 08/27/01 Sev=Info/4 IPSEC/0x63700014
Deleted all keys

293	16:13:21.107	08/27/01	Sev=Info/4	IPSEC/0x63700010
Created a new key structure				
294	16:13:21.107	08/27/01	Sev=Info/4	IPSEC/0x6370000F
Added key with SPI=0xffff74339 into key list				
295	16:13:21.107	08/27/01	Sev=Info/4	IPSEC/0x63700010
Created a new key structure				
296	16:13:21.107	08/27/01	Sev=Info/4	IPSEC/0x6370000F
Added key with SPI=0x2968b165 into key list				
297	16:13:21.107	08/27/01	Sev=Info/4	IPSEC/0x63700010
Created a new key structure				
298	16:13:21.107	08/27/01	Sev=Info/4	IPSEC/0x6370000F
Added key with SPI=0x946e7d55 into key list				
299	16:13:21.107	08/27/01	Sev=Info/4	IPSEC/0x63700010
Created a new key structure				
300	16:13:21.107	08/27/01	Sev=Info/4	IPSEC/0x6370000F
Added key with SPI=0x4d038a8a into key list				

Related Information

- [Cisco VPN 3000 Series Concentrator Support Page](#)
- [Cisco VPN 3000 Series Client Support Page](#)
- [IPSec Support Page](#)
- [Technical Support & Documentation – Cisco Systems](#)

[Contacts & Feedback](#) | [Help](#) | [Site Map](#)

© 2014 – 2015 Cisco Systems, Inc. All rights reserved. [Terms & Conditions](#) | [Privacy Statement](#) | [Cookie Policy](#) | [Trademarks of Cisco Systems, Inc.](#)

Updated: Mar 24, 2008

Document ID: 5404
