

ASA 8.x Import RDP Plug-in for use with WebVPN Configuration Example

Contents

[Introduction](#)

[Prerequisites](#)

[Requirements](#)

[Components Used](#)

[Conventions](#)

[Configure](#)

[Step 1. Obtain the RDP Java Plug-in](#)

[Step 2. Import the RDP Plug-in](#)

[Step 3. Define RDP Connection Parameters \(Optional\)](#)

[Step 4. Connect to an RDP Server](#)

[Step 5. Verify the Configuration](#)

[Troubleshoot](#)

[Related Information](#)

[Introduction](#)

This document describes how to import the Remote Desktop Protocol (RDP) plug-in for use with WebVPN.

[Prerequisites](#)

[Requirements](#)

Configure basic WebVPN before you attempt the procedures described in this document.

[Components Used](#)

This document uses an ASA 5510 that runs software version 8.0(2) and ASDM version 6.0(2). A Windows 2003 server is used to connect to the RDP plug-in via WebVPN. The client desktop has JRE 1.4.2_05-b04 installed. A TFTP server is used to import the plug-in through the command line.

The information in this document was created from the devices in a specific lab environment. All of the devices used in this document started with a cleared (default) configuration. If your network is live, make sure that you understand the potential impact of any command.

[Conventions](#)

Refer to the [Cisco Technical Tips Conventions](#) for more information on document conventions.

Configure

In order to import and use the RDP plug-in, complete these steps:

Step 1. Obtain the RDP Java Plug-in

You can download the RDP plug-in, along with other WebVPN compatible plug-ins, from the [Cisco Software Center](#). For more information about the RDP plug-in, refer to this URL:

<http://properjavardp.sourceforge.net/> 

Note: The RDP plug-in provided on the Cisco website is optimized for JRE 1.4. You might experience usability problems if you use the RDP plug-in with other JRE releases. To resolve issues with the RDP plug-in, use the [ssl server-version any](#) command instead of the `ssl server-version tlsv1-only` command, which is used by default.

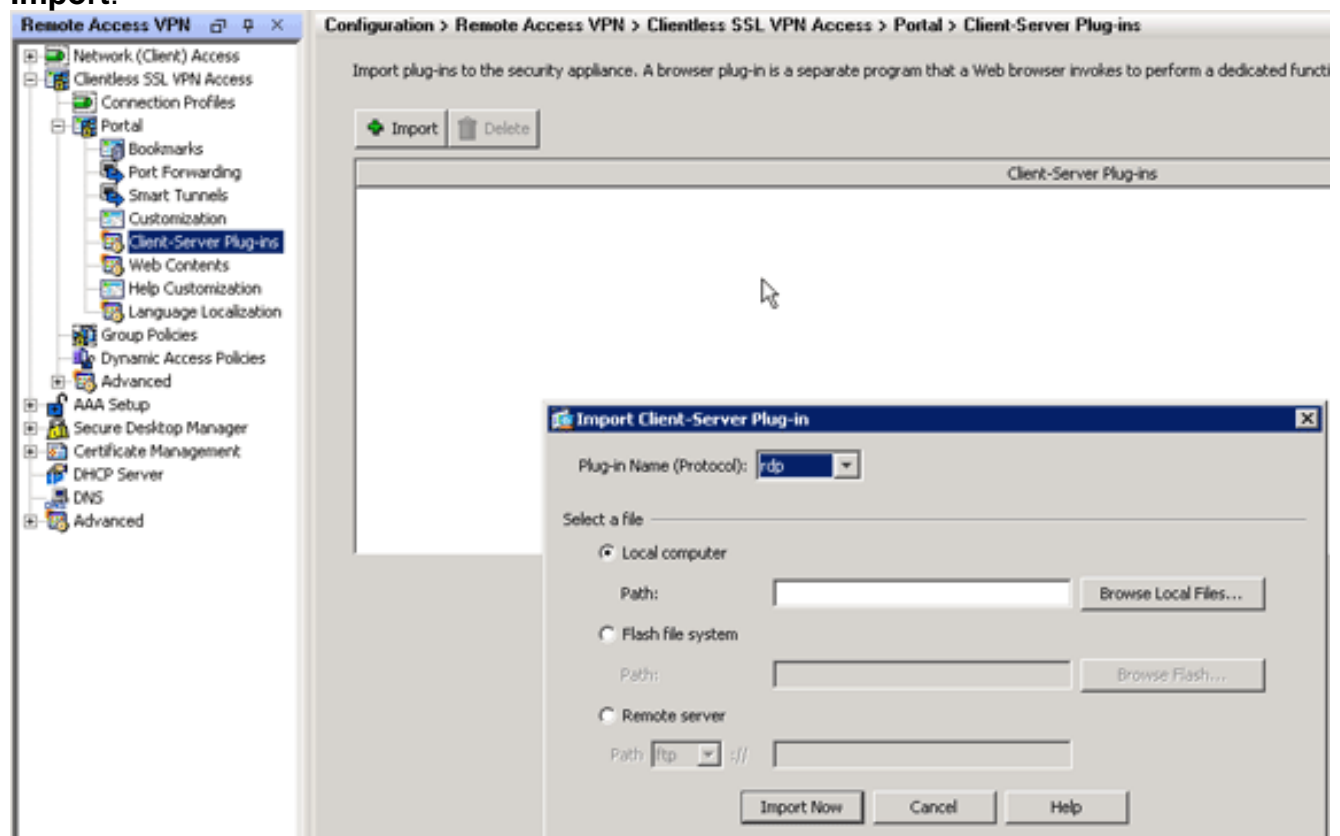
Step 2. Import the RDP Plug-in

In order to use the RDP plug-in with WebVPN, you must import the plug-in to the ASA.

ASDM Example

1. In the ASDM application, click **Configuration**, and then click **Remote Access VPN**.
2. Expand **Clientless SSL VPN Access**, expand **Portal**, and then choose **Client-Server Plug-ins**.
3. Click

Import.



4. Select **rdp** from the Plug-in Name (Protocol) drop-down list.
5. Click the **Local computer** radio button, and click **Browse Local Files**.
6. Browse to the location in which you saved the RDP plug-in, and select the file.
7. Click **Import Now**. This Information dialog box



appears.

8. Click **OK**.

Command-Line Example

This command-line example uses TFTP in order to import the WebVPN plug-in.

```

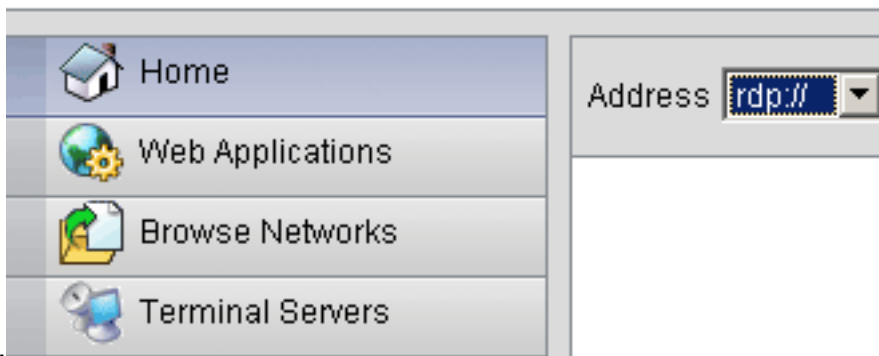
ciscoasa
ciscoasa#import webvpn plug-in protocol rdp
tftp://192.168.50.5/rdp-plugin.jar !--- Use the import
webvpn plug-in protocol command in order to import
WebVPN !--- plug-ins. This example uses tftp in order to
import the RDP plug-in.
!!!!!!!!!!!!!!!!!!!!!!!!!!!!!!!!!!!!!!!!!!!!!!!!!!!!!!!!!!!!!!
!!!!!!!!!!!!!!!!!!!!!!!!!!!!!!!!!!!!!!!!!!!!!!!!!!!!!!!!!!!!!!
!!!!!!!!!!!!!!!!!!!!!!!!!!!!!!!!!!!!!!!!!!!!!!!!!!!!!!!!!!!!!!
!!!!!!!!!!!!!!!!!!!!!!!!!!!!!!!!!!!!!!!!!!!!!!!!!!!!!!!!!!!!!!
!!!!!!!!!!!!!!!!!!!!!!!!!!!!!!!!!!!!!!!!!!!!!!!!!!!!!!!!!!!!!!
!!!!!!!!!!!!!!!!!!!!!!!!!!!!!!!!!!!!!!!!!!!!!!!!!!!!!!!!!!!!!!
!!!!!!!!!!!!!!!!!!!!!!!!!!!!!!!!!!!!!!!!!!!!!!!!!!!!!!!!!!!!!!
!!!!!!!!!!!!!!!!!!!!!!!!!!!!!!!!!!!!!!!!!!!!!!!!!!!!!!!!!!!!!!
!!!!!!!!!!!!!!!!!!!!!!!!!!!!!!!!!!!!!!!!!!!!!!!!!!!!!!!!!!!!!!
!!!!!!!!!!!!!!!!!!!!!!!!!!!!!!!!!!!!!!!!!!!!!!!!!!!!!!!!!!!!!!
!!!!!!!!!!!!!!!!!!!!!!!!!!!!!!!!!!!!!!!!!!!!!!!!!!!!!!!!!!!!!!
ciscoasa#

```

Step 3. Define RDP Connection Parameters (Optional)

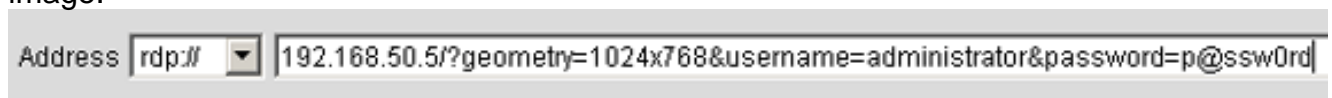
When you connect with the RDP plug-in, you can define connection parameters within the URL. In order to define RDP connection parameters within the URL, complete these steps:

1. Within the VPN Service browser, select rdp:// from the Address drop-down list within your

browser.

2. Insert a forward slash (/) and question mark (?) after the host name or IP address, and separate individual parameters with the ampersand symbol (&) as shown in this image:



3. Define the port parameter directly after the host name or IP address. This example uses port 5587.



For a full list of connection parameters, click Terminal Servers located on the left side of the VPN Service browser. This table lists some of the more common parameters:

WebVPN RDP Plug-in Variables		
Parameter	Argument	Definition
console	yes	Enters the current console session if defined.
username	string	User name used to log in to the RDP server.
password	string	Password used to log in the RDP server (not recommended).
domain	string	Domain name used to log in to RDP server.
geometry	widthxheight	Defines the height and width of the screen (for example: 800x600 or 1024x768).
port	integer	RDP port number. The default RDP port number is 3389.

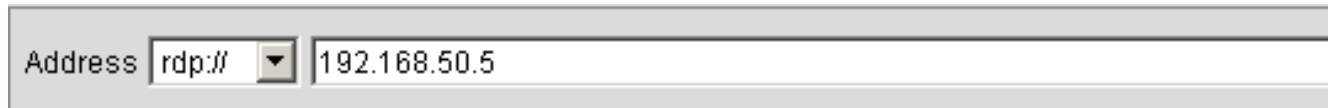
Note: You can use RDP connection parameters in RDS bookmark entries as well. This image shows an example of an RDP bookmark entry:



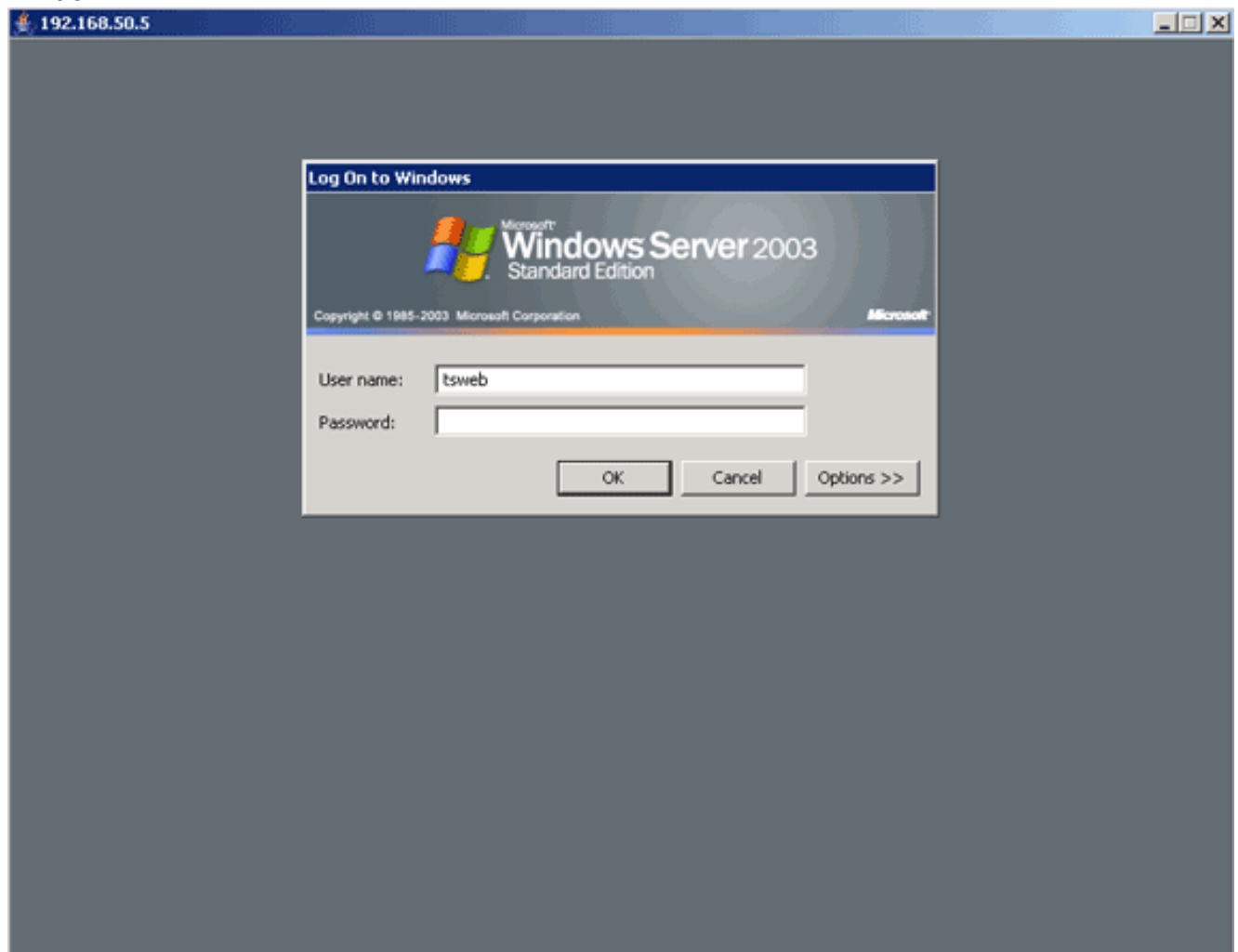
[Step 4. Connect to an RDP Server](#)

In order to connect to an RDP server, complete these steps:

1. Establish a WebVPN session, and choose rdp:// from the Address drop-down list.



2. Enter the IP address of the RDP server or the connection parameters you defined in Step 3, and click Browse. The RDP session appears in a new window.



[Step 5. Verify the Configuration](#)

Use these procedures in order to verify that the RDP plug-in was imported successfully.

- Use the show import webvpn plug-in command in order to display the current WebVPN plug-

ins, and verify rdp is listed in the output of the command.

- Verify that rdp:// is available as a URI option in the Address drop-down list when you are connected to WebVPN.

Troubleshoot

Use these procedures in order to troubleshoot errors when you use the RDP plug-in:

- **Clear Browser Cache**This procedure deletes all files that are currently stored in the cache of your browser. In Internet Explorer, choose **Tools > Internet Options**. In the Temporary Internet Files section, click the **General** tab, and then click **Delete Files**.
- **Clear JRE Cache**This procedure deletes all files that are currently stored in the Java cache. In Windows, click **Start**, and choose **Settings > Control Panel**. In the Control Panel, double-click **Java Plug-in**. Click the **Cache** tab, and click **Clear**.
- **Uninstall/Reinstall JRE**In Windows, click Start, and choose **Settings > Control Panel > Add or Remove Programs**. Choose the **Java Runtime Environment** program, and click **Remove**. Download the new JRE from the Java website (<http://www.java.com/en/download/>), and install the new JRE. **Note:** The RDP plug-in runs best and is optimized for JRE 1.4.
- **Uninstall the RDP Plug-in**If the RDP option is not listed as a URI in the address field when you are logged into WebVPN, uninstall and reinstall the RDP plug-in. In order to remove the RDP plug-in from WebVPN, complete one of these procedures: *WebVPN*—Navigate to Configuration > Remote Access VPN > Clientless SSL VPN Access > Portal > Client-Server Plug-ins, select the RDP plug-in, and click Delete. *CLI*—Use the revert webvpn plug-in rdp command in order to remove the plug-in.

Related Information

- [Technical Support & Documentation - Cisco Systems](#)