

IBM CMM Quick Reference Guide

Contents

[Introduction](#)

[Prerequisites](#)

[Requirements](#)

[Components Used](#)

[CMM Overview](#)

[CMM Layout](#)

[Useful CMM Screens](#)

[Login Screen](#)

[System Information Screen](#)

[Event Log Screen](#)

[Chassis Hardware Topology Screen](#)

[CMM Firmware Upgrades](#)

[CMM Recovery](#)

Introduction

The document describes basic information about the Chassis Management Module (CMM) for deployments that include a Cisco blade switch within the same chassis.

Note: Cisco recommends that you reference the [IBM website](#) for any setup, configuration, and troubleshooting information in regards to the CMM module.

Prerequisites

Requirements

Cisco recommends that you have knowledge of these topics:

- IBM blade chassis
- Cisco blade switches

Components Used

The information in this document is based on these software and hardware versions:

- Cisco B22 Series Fabric Extender (FEX)
- IBM CMM

The information in this document was created from the devices in a specific lab environment. All of the devices used in this document started with a cleared (default) configuration. If your network is live, make sure that you understand the potential impact of any command.

CMM Overview

The CMM is a hot-swap module that configures and manages all of the installed chassis components. Since the IBM chassis is used in order to host Cisco blade switches, it is good practice to understand the CMM features and functions, and how you can configure it.

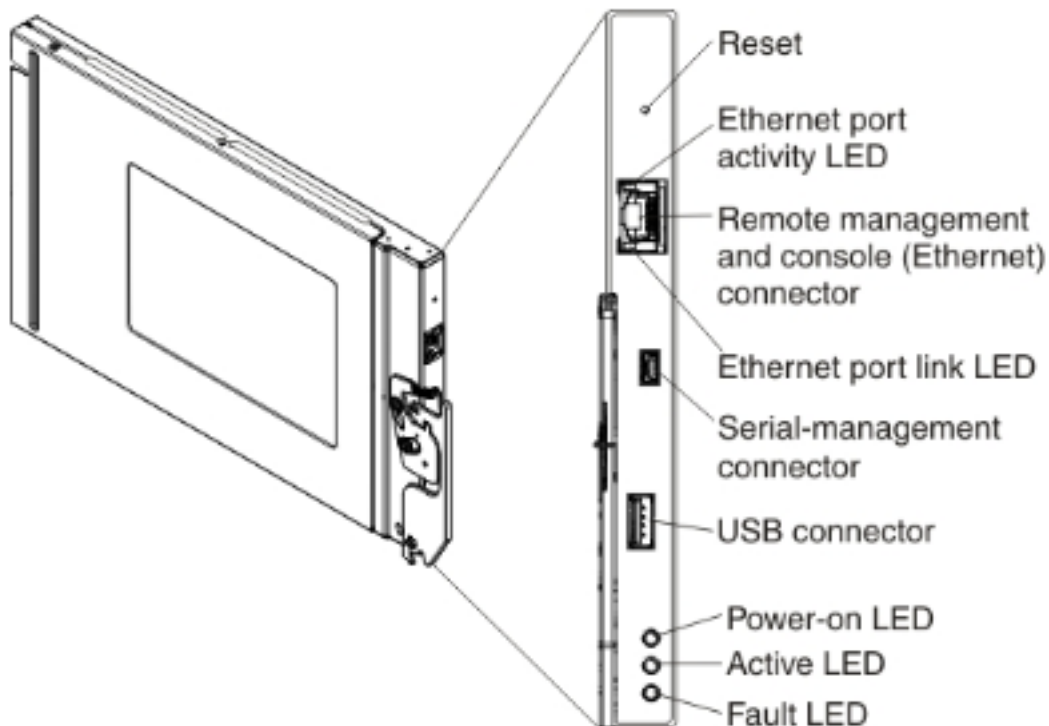
Note: This is an IBM product, and IBM owns and manages it.

The CMM provides these features and functions:

- Single-chassis management
- Power control and fan management
- Chassis and compute node initialization
- Chassis management network
- Diagnostics
- Service data collection and call home services
- Resource discovery and inventory management
- Resource alerts and monitoring management
- Chassis and compute node power management
- Network management

CMM Layout

This image illustrates the physical component layout of the CMM:



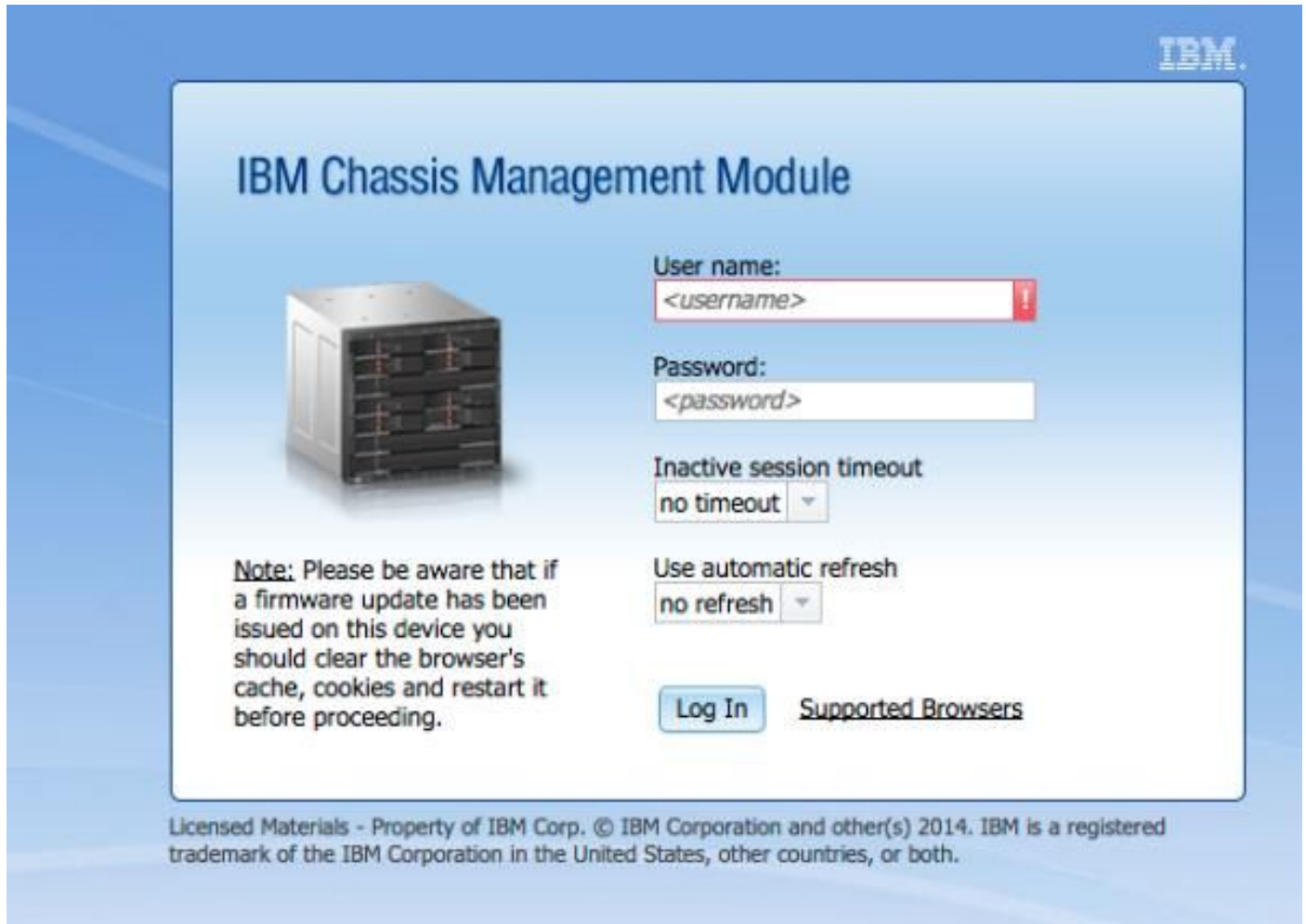
Useful CMM Screens

This section describes some of the more useful CMM screens.

Note: The images in this section are taken from a web browser, while logged into the CMM module. For this example, the CMM IP address is **10.122.166.119**.

Login Screen

This image shows the CMM Login screen:



IBM

IBM Chassis Management Module

User name:
<username>

Password:
<password>

Inactive session timeout
no timeout

Use automatic refresh
no refresh

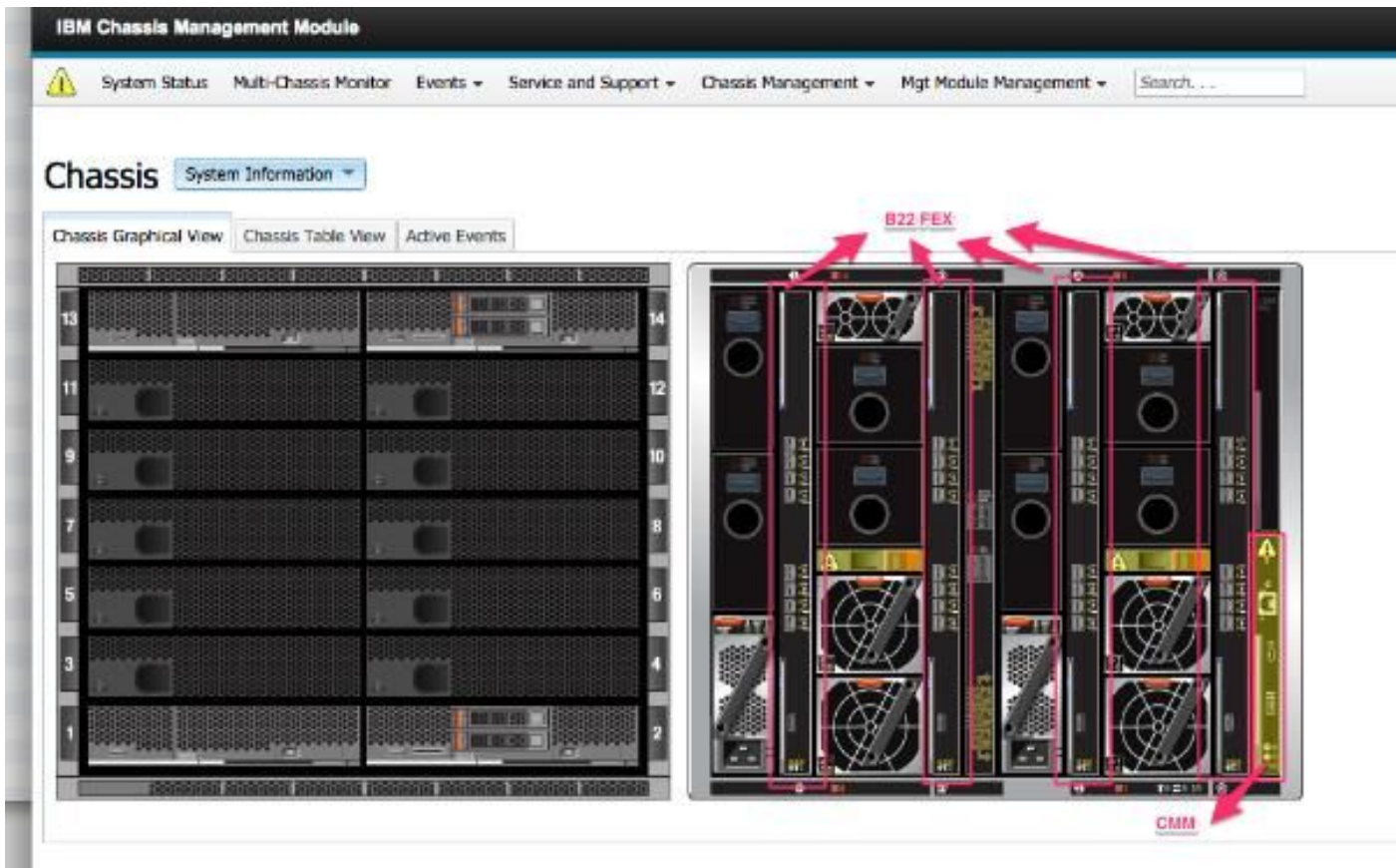
Log In [Supported Browsers](#)

Note: Please be aware that if a firmware update has been issued on this device you should clear the browser's cache, cookies and restart it before proceeding.

Licensed Materials - Property of IBM Corp. © IBM Corporation and other(s) 2014. IBM is a registered trademark of the IBM Corporation in the United States, other countries, or both.

System Information Screen

The System Information screen provides a visual representation of the modules within the blade chassis:



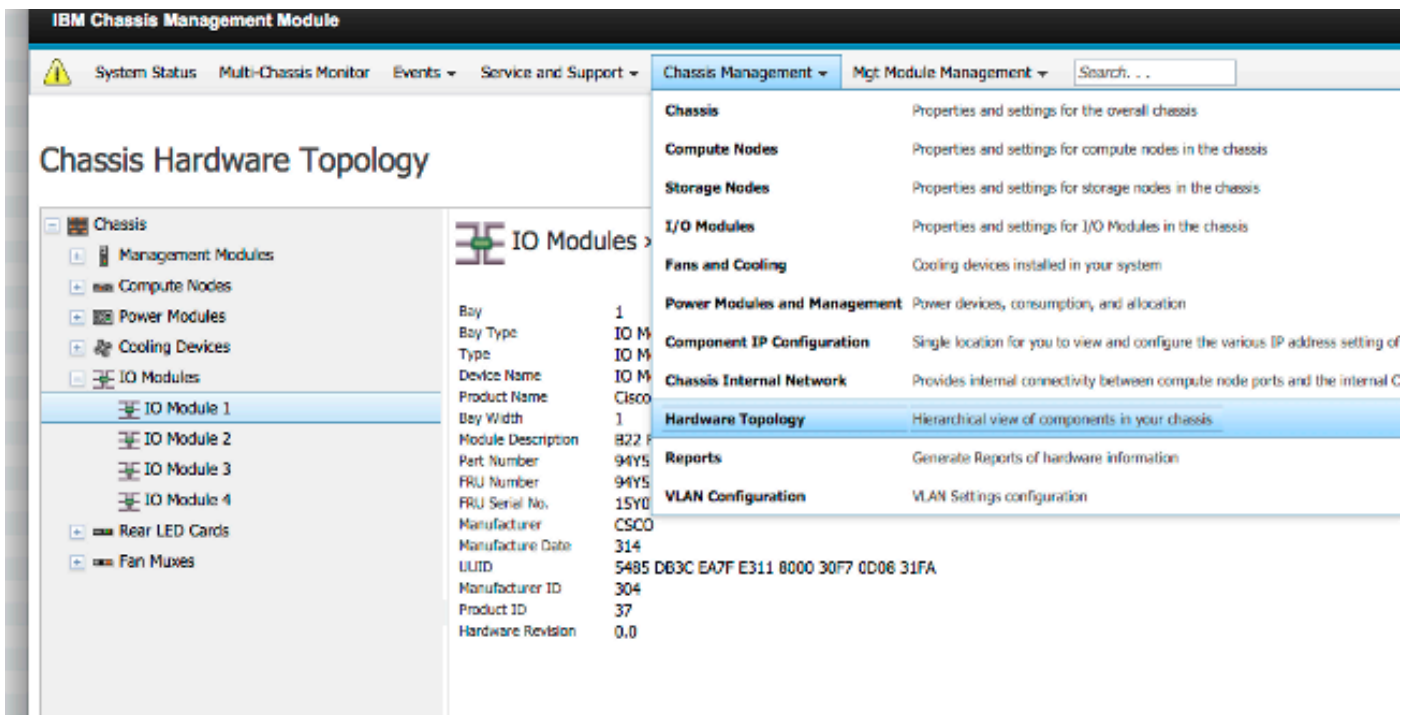
Event Log Screen

In order to check for event logs, click the **Events** tab and choose **Event Log**:

| ID | Severity | Source | Sequence # | Date | Event ID | Message |
|----|---------------|----------|------------|---------------------------|----------|--|
| 1 | Informational | Audit | 000002AC | Dec 23, 2014, 08:02:48 PM | 0000007A | Login successful. User ID USERID from Web at IP address 10.150.54.247. |
| 2 | Informational | ICMod_01 | 000002AB | Dec 23, 2014, 03:15:54 PM | 0EA1A001 | I/O module 1 IP address was changed to 10.122.166.78 by the I/O module. |
| 3 | Informational | ICMod_03 | 000002AA | Dec 22, 2014, 09:13:24 AM | 0001710F | I/O module IC Module 03 has restarted. |
| 4 | Informational | Audit | 000002A9 | Dec 19, 2014, 04:51:02 AM | 0001601A | Logoff successful. User ID USERID from Web at IP address 10.116.43.105. |
| 5 | Informational | Audit | 000002A8 | Dec 19, 2014, 04:51:01 AM | 000160E0 | Web session has timed out for user USERID. |
| 6 | Informational | Audit | 000002A7 | Dec 19, 2014, 04:39:01 AM | 0001601A | Logoff successful. User ID USERID from Web at IP address 10.116.200.151. |
| 7 | Informational | Audit | 000002A6 | Dec 19, 2014, 04:39:01 AM | 000160E0 | Web session has timed out for user USERID. |

Chassis Hardware Topology Screen

In order to view the chassis hardware topology, click the **Chassis Management** tab and choose **Hardware Topology**:



As shown in these images, the CMM GUI can be easy to navigate, dependent upon the information that you desire to view in the blade chassis.

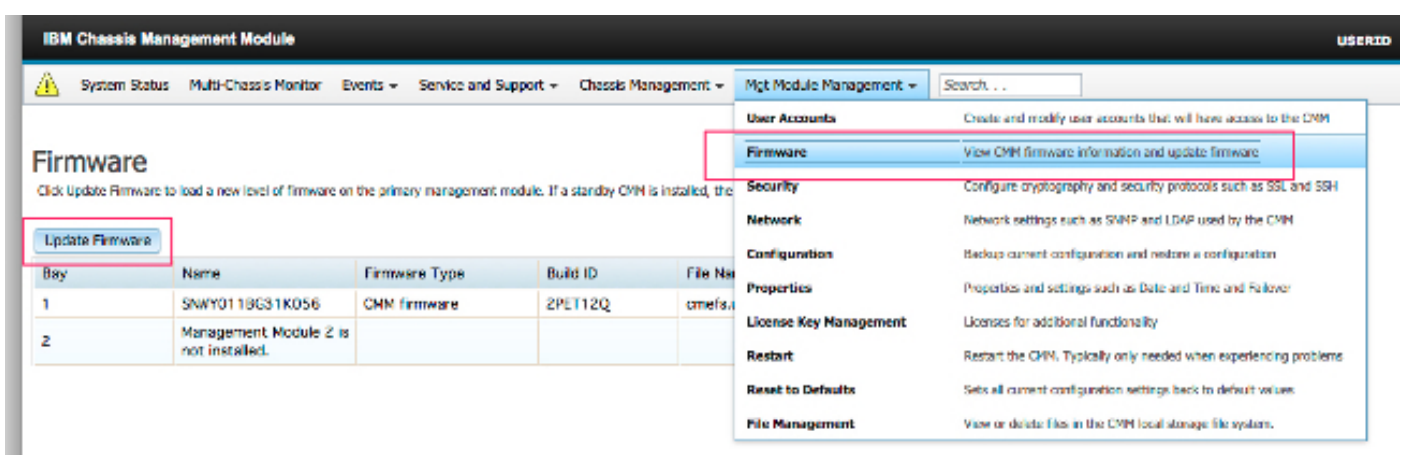
CMM Firmware Upgrades

Note: Always refer to the instructions that are provided on the IBM website about how to upgrade the CMM module. The information in this section was developed in a lab environment.

In order to upgrade the firmware of the CMM, you must download the image from the IBM website. You can run a Google search for **cmm images** in order to locate the correct information.

Note: You are required to use login information in order to download the firmware upgrade files, which is free through the IBM website.

Once you download the folder, unzip it and locate the **xxx.uxp** file. Use this file for the firmware upgrade, which takes approximately ten minutes to complete.



CMM Recovery

Complete these steps in order to reset and reconfigure the CMM from the CMM web interface:

1. With a straightened paper clip or similar tool, press the **Reset** button for 15 seconds in order to reset the CMM to the manufacturer default settings.
Tip: For more information about the Reset button and its location, refer to the [CMM controls and indicators](#) section of the IBM Flex System information page.
2. Connect an Ethernet cable from a laptop or a workstation directly to the CMM.
Note: This is necessary in order to avoid connection to a different CMM on the same subnet with the default IP address.
3. Open a browser from the laptop or workstation and navigate to the CMM default IP address at **https://192.168.70.100**.
Note: You might be required to reconfigure your local host in order to reach the subnet.
4. Log into the CMM with the default user name **USERID** and the default passcode **PASSWORD**. You are required to change the password immediately.
5. Configure the CMM with the same settings that were used before the reset.
6. Optionally, you can create a second administrative user account for use in future lock-out situations.