

Install a Telepresence Management Suite (TMS) Release Key

Contents

[Introduction](#)

[Prerequisites](#)

[Requirements](#)

[Components Used](#)

[Configure](#)

[Access the Web Interface From Windows Server](#)

[Access Web Interface Remotely](#)

[Install Release Key](#)

[Verify](#)

[Troubleshoot](#)

Introduction

This document describes how to install a Telepresence Management Suite (TMS) release key.

Prerequisites

Requirements

Cisco recommends that you have knowledge of these topics:

Have reviewed TMS installation guide prerequisites [TMS guide](#)

Have deployed Windows 2K12 server or similar version

Have installed a web browser such as Firefox, Chrome or Internet Explorer on Windows 2K12 server (optional)

Have successfully installed SQL on Windows 2K12 Server

Have downloaded and installed Telepresence Management Suite [TMS software](#)

Have obtained access to the web interface using **Administrator** privileges

Have applied for and received a license email with a Cisco Telepresence Management Suite Release Key

Components Used

The information in this document is based on these software versions:

Windows 2K12 server

Windows SQL Server

Telepresence Management Suite (TMS) version 15.3.X

A Remote Desktop application

A web browser such as Firefox, Chrome or Internet Explorer on Windows 2K12 server (optional)

Licensing email with a Release Key

The information in this document was created from the devices in a specific lab environment. All of the devices used in this document started with a cleared (default) configuration. If your network is live, make sure that you understand the potential impact of any command.

Configure

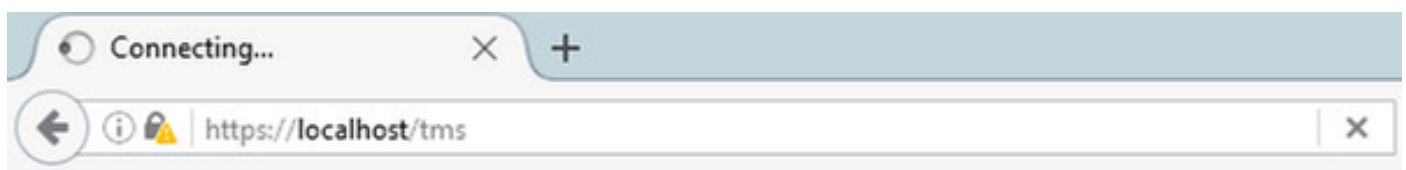
This web interface example video supplements this document:

Note: An example license email is not available to show for this lab environment device.

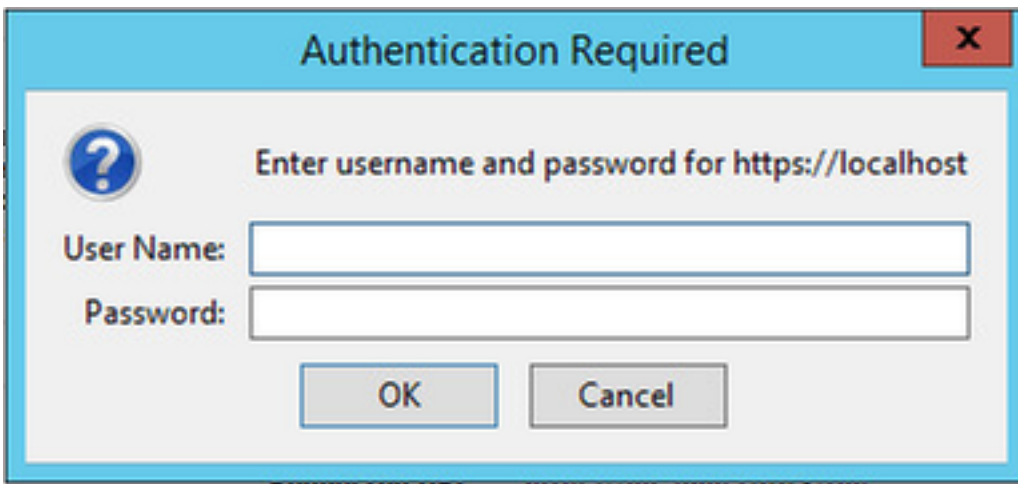
Note: TMS Release Key should be the following format: XXXXXXXXX-XX-XXXXXXXXX where the X values represent the unique characters in your release key.

Access the Web Interface From Windows Server

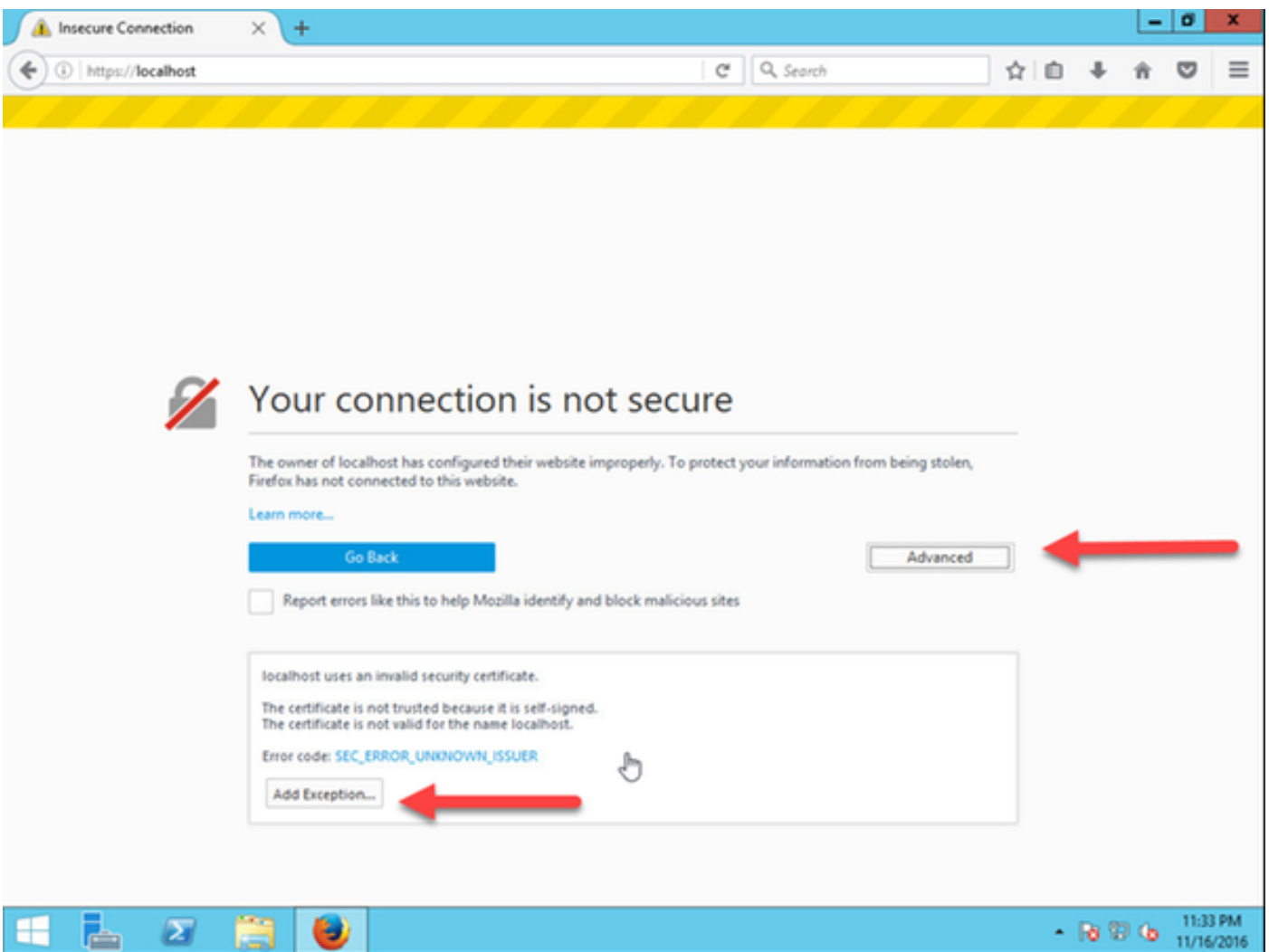
Step 1: Access the Windows Server which hosts TMS via Remote Desktop. Open a web browser and navigate to **https://localhost/tms**:



Step2: Log in with an account with **Administrator** privileges when prompted:

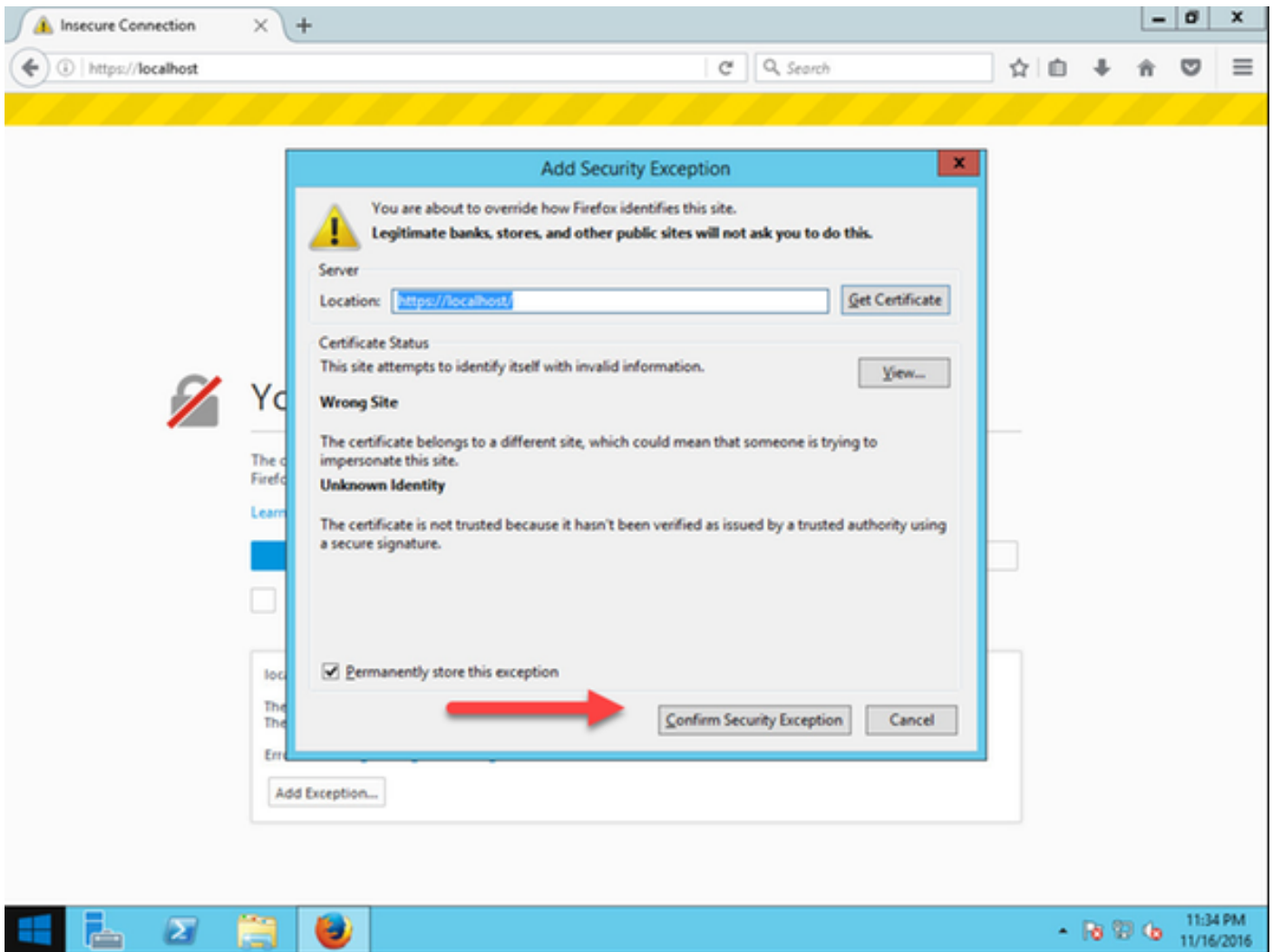


Step 3: Click **Advanced** then **Add Exception** when you first log in to the web interface:



Step 4: Click **Confirm Security Exception**:

Note: Disable pop-up blockers if you do not receive this prompt.

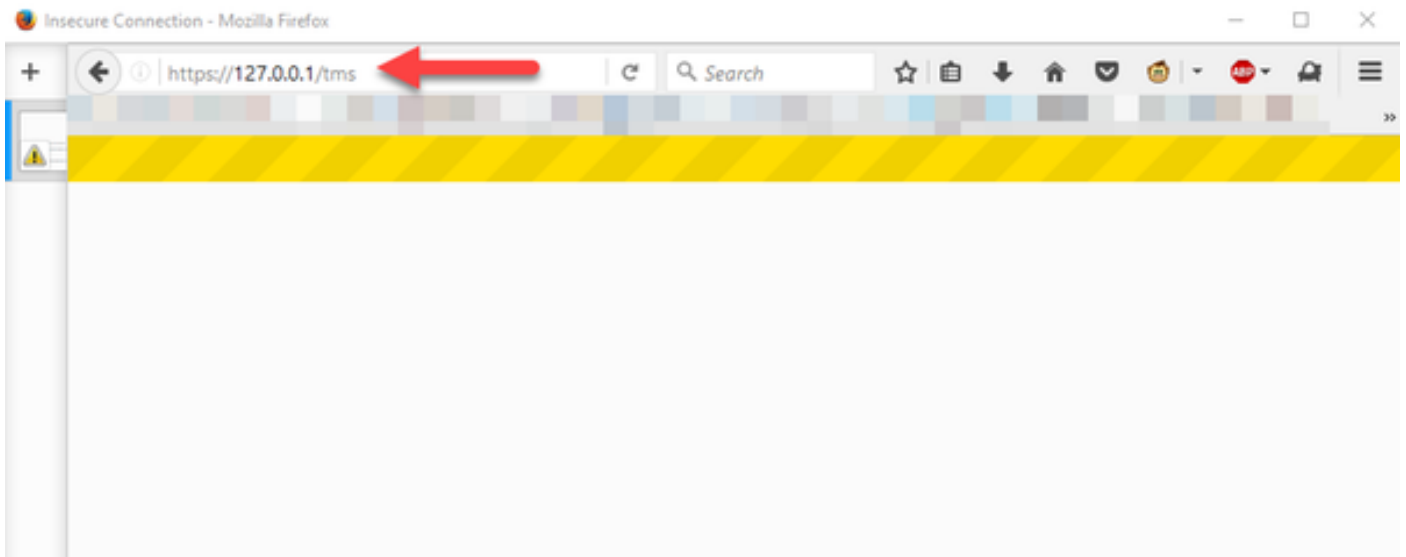


Note: At this point you should have access to the TMS web interface.

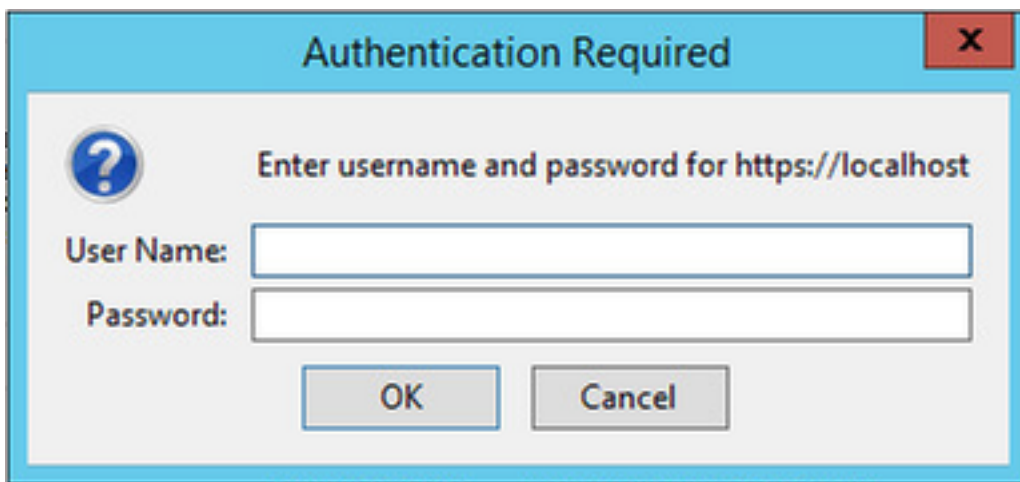
Access Web Interface Remotely

Step 1: Open a web browser on your local computer and enter the URL for TMS <https://X.X.X.X/tms>.

Note: Replace X.X.X.X with your Windows Server IP address.



Step 2: Log in with an Administrator account when prompted:



Step 3: Click **Advanced** then **Add Exception** when you first log in to the web interface:

Your connection is not secure

The owner of [redacted] has configured their website improperly. To protect your information from being stolen, Firefox has not connected to this website.

[Learn more...](#)

[Go Back](#)



[Advanced](#)

Report errors like this to help Mozilla identify and block malicious sites

[redacted] an invalid security certificate.

The certificate is not trusted because it is self-signed.
The certificate is not valid for the name [redacted]

Error code: [SEC_ERROR_UNKNOWN_ISSUER](#)

[Add Exception...](#)

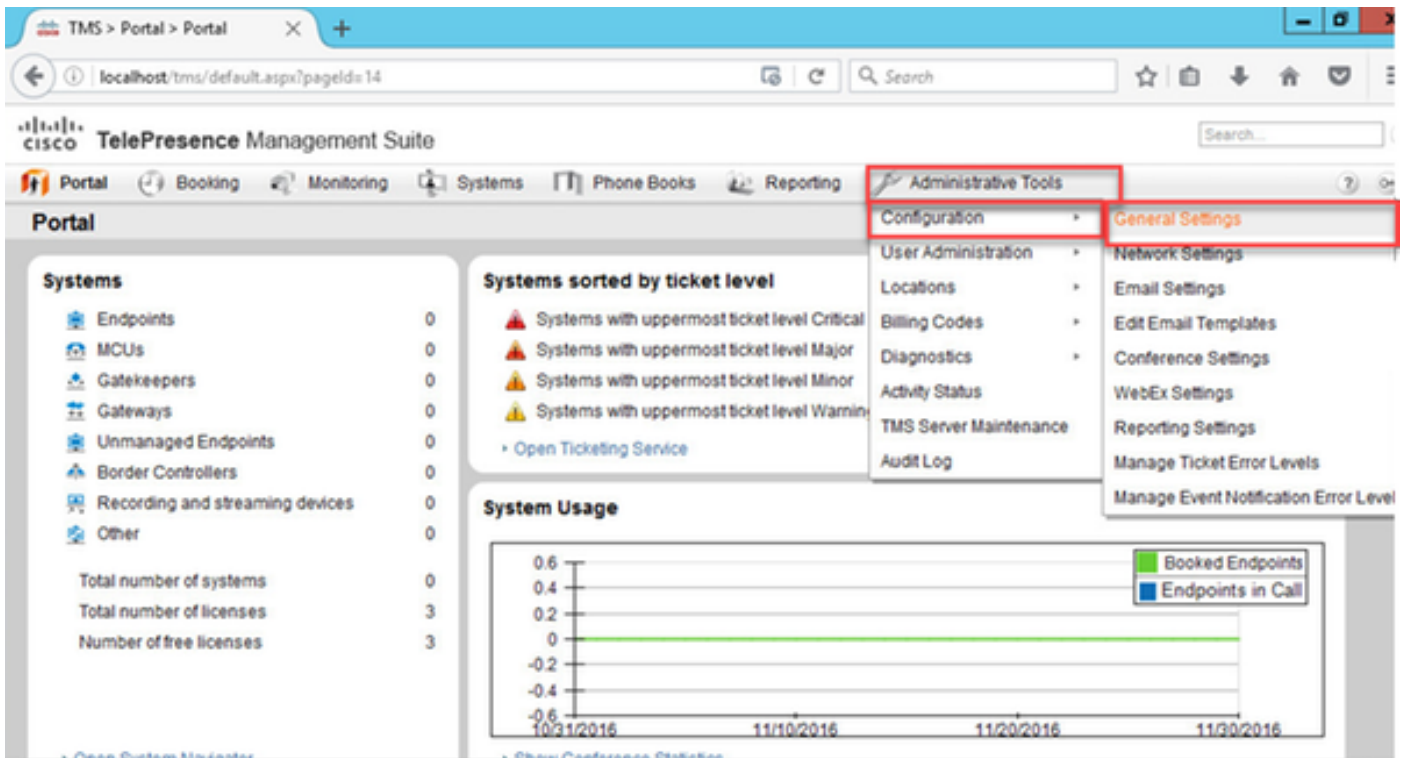
Step 4: Click **Confirm Security Exception**: as noted in the **Access the Web Interface From Windows Server** section of this document.

Note: Disable pop-up blockers if you do not receive this prompt.

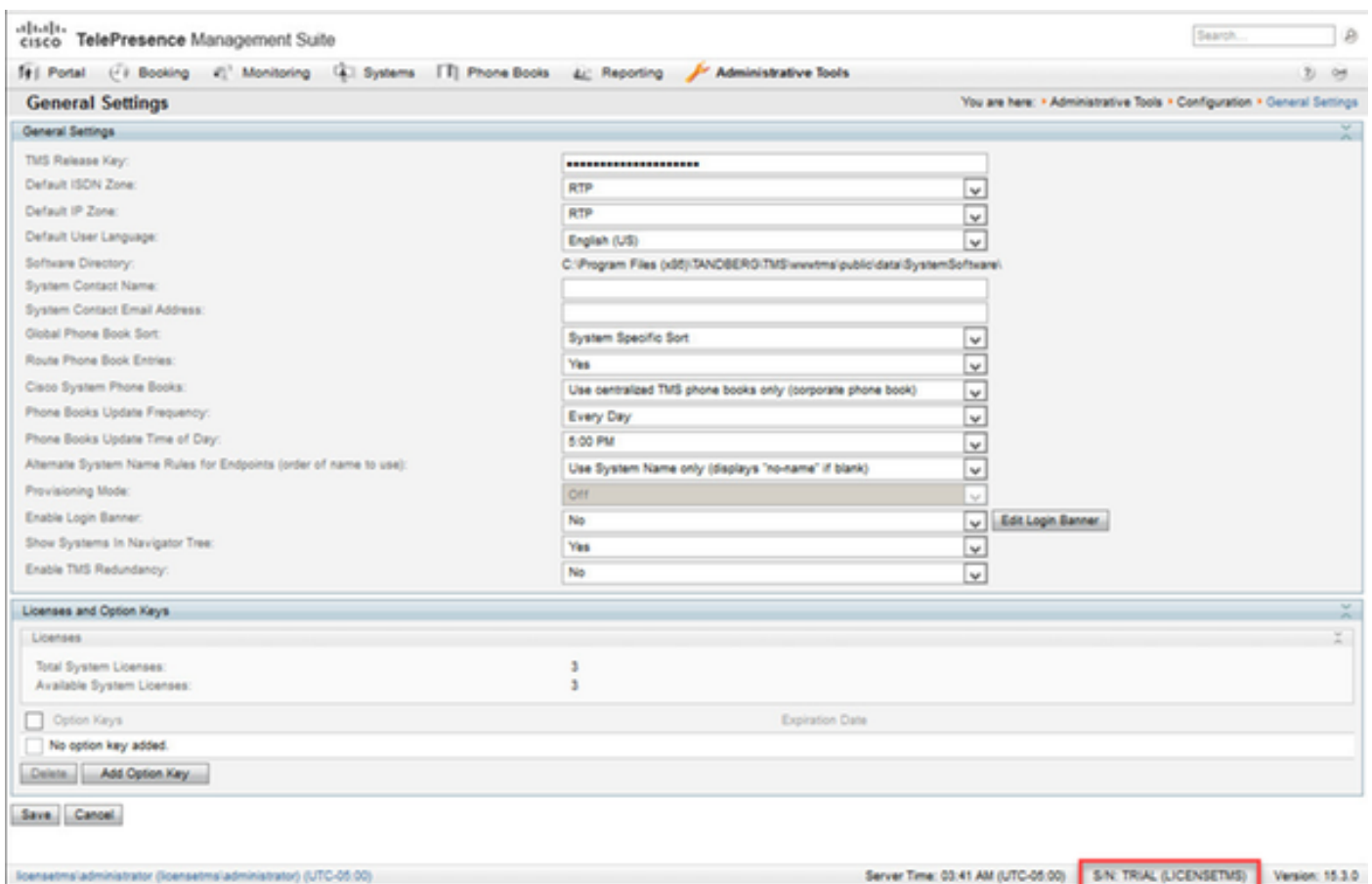
Note: At this point you should have access to the TMS web interface.

Install Release Key

Step 1: Navigate to **Administrative Tools > Configuration > General Settings**:



Step 2: Verify a release key has not been applied previously. Confirm at the bottom right hand corner of the **General Settings** web page the TMS serial number is labeled **TRIAL**:



Step 3: Copy your TMS release key from your license email and enter it in the **TMS Release Key** field. Click **Save** on the bottom left of the web interface.

Note: TMS Release Key should be the following format: XXXXXXXX-XX-XXXXXXXX where the X values represent the unique characters in your release key.

General Settings
 TMS Release Key: [Redacted] (indicated by a red arrow)
 Default ISDN Zone: RTP
 Default IP Zone: RTP
 Default User Language: English (US)
 Software Directory: C:\Program Files (x86)\TANDBERG-TMS\www\msi\public\data\SystemSoftware\

Licenses and Option Keys
 Licenses
 Total System Licenses: 3
 Available System Licenses: 3
 Option Keys
 No option key added
 [Delete] [Add Option Key]

[Save] [Cancel]

icensetms/administrator (icensetms/administrator) (UTC-05:00) Server Time: 03:41 AM (UTC-05:00) S/N: TRIAL (LICENSETMS) Version: 15.3.0

Verify

Verify the release key added correctly. View the lower right of the web interface and notice that **S/N: TRIAL (VMname)s** now shows **S/N: [SerialNumber] (VMname):**

Portal
 You are here: Portal > Portal

Systems
 Endpoints: 0
 MCUs: 0
 Gatekeepers: 1
 Gateways: 0
 Unmanaged Endpoints: 0
 Border Controllers: 0
 Recording and streaming devices: 0
 Other: 0
 Total number of systems: 1
 Total number of licenses: 10
 Number of free licenses: 9
[Open System Navigator](#)

Systems sorted by ticket level
 Systems with uppermost ticket level Critical: 0
 Systems with uppermost ticket level Major: 0
 Systems with uppermost ticket level Minor: 0
 Systems with uppermost ticket level Warning: 1
[Open Ticketing Service](#)

Conferences and reservations
 Pending: 0
 Active: 0
 Finished: 0
 Requests: 0
[Open Conference Control Center](#)

System Usage
 Booked Endpoints
 Endpoints in Call
 11/2/2016 11/12/2016 11/22/2016 12/2/2016
[Show Conference Statistics](#)

icensetms/administrator (icensetms/administrator) (UTC-05:00) Server Time: 01:06 AM (UTC-05:00) S/N: 80BI (LICENSETMS) Version: 15.3.0

Troubleshoot

If you encounter an error, contact Cisco TAC.