

Cloud Onramp for Microsoft 365

Contents

Optimizing SaaS connectivity using Cisco Catalyst SD-WAN	3
Summary	8

Optimizing SaaS connectivity using Cisco Catalyst SD-WAN

As more applications move to the cloud, the traditional approach of backhauling traffic over expensive WAN circuits to the data center or a centralized Internet gateway via a hub-and-spoke architecture is no longer relevant. Traditional WAN infrastructure was not designed for accessing applications in the cloud. It is expensive and introduces unnecessary latency that degrades the user experience. The scale-up effect of the centralized network egress model, coupled with perimeter stacks optimized to handle conventional Internet browsing, often poses bottlenecks and capacity ceilings, which can hinder or bring to a stall a customer's transition to the SaaS cloud.

As enterprises aggressively adopt SaaS applications such as Microsoft 365, the legacy network architecture poses major problems related to complexity and user experience. In many cases, network administrators have limited or even no visibility into the network performance characteristics between the end user and Software-as-a-Service (SaaS) applications. A "one size fits all" approach focusing on perimeter security without application awareness, which legacy network architectures often use, does not allow enterprises to differentiate and optimize sanctioned and more trusted cloud business applications from recreational Internet use. This results in the former being subject to expensive and intrusive security scanning, which further slows down the user experience.

Massive transformations are occurring in enterprise networking as network architects reevaluate the design of their WANs to support a cloud transition, reduce network costs, and increase the visibility and manageability of their cloud traffic while ensuring an excellent user experience. These architects are turning to Software-Defined WAN (SD-WAN) to take advantage of inexpensive broadband Internet services and to find ways to intelligently route trusted SaaS cloudbound traffic directly from remote branches. Cisco® Catalyst SD-WAN fabric is an industry-leading platform that delivers an elegant, simplified, secure, end-to-end hybrid WAN solution that can facilitate policy-based, local, and direct connectivity from users to your trusted, mission-critical SaaS applications, such as Microsoft 365, straight from your branch office. Enterprises can use this fabric to build large-scale SD-WAN networks that have advanced routing, segmentation, and security capabilities with zero-touch bring-up, centralized orchestration, visibility, and policy control. The result is a SaaS cloud-ready network that is easy to manage and more cost-efficient to operationalize and that empowers enterprises to deliver on their business objectives.

A fundamental tenet of the Cisco Catalyst SD-WAN fabric is connecting users at the branch to applications in the cloud in a seamless, secure, and reliable fashion. Cisco delivers this comprehensive capability for SaaS applications with the Cloud OnRamp for SaaS solution, in alignment with Microsoft's connectivity principles for Microsoft 365 (aka.ms/pnc).

With Cloud OnRamp for SaaS, the SD-WAN fabric continuously measures the performance of a designated SaaS application through all permissible paths from a branch. For each path, the fabric computes a quality-of-experience score ranging from 0 to 10, with 10 being the best performance. This score gives network administrators visibility into application performance that has never before been available. Most importantly, the fabric automatically makes real-time decisions to choose the best-performing path between the end users at a remote branch and the cloud SaaS application. Enterprises have the flexibility to deploy this capability in multiple ways, according to their business needs and security requirements.

Use case 1: Direct cloud access from a remote branch

Enterprises using a single or multiple inexpensive broadband Internet circuits at remote sites can enable Cloud OnRamp on the branch router to permit traffic to Microsoft 365 to break out directly to the Internet. Only trusted and critical traffic to Microsoft 365 will be allowed a secure local breakout, while all other Internet-bound traffic will follow its usual path. For example, a customer can specify a policy in which the most performance-demanding and trusted Microsoft 365 applications, such as Exchange Online, SharePoint Online, and Microsoft Teams, are permitted to take advantage of local and direct Internet connection, while the rest of user network communication outside of the customer network will be routed through the customer data center.

Microsoft 365 Endpoints are classified into three categories (Optimize, Allow and Default) based on endpoint sensitivity and network requirements to deliver an effective user experience. With Microsoft 365 IP and URL categorization, network administrators have granularity and flexibility to define what Microsoft 365 endpoints are accessed over Direct Internet Access circuits and what endpoints are accessed via data center back-haul with security inspection.

Cloud OnRamp for SaaS is tightly integrated with [Cisco Software-Defined Application Visibility and Control \(SD-AVC\)](#). Cisco SD-AVC periodically fetches Microsoft 365 IP and URL categories (Optimize, Allow and Default) using Microsoft 365 Web Service APIs. Application classification cache on SD-WAN routers is updated continuously by Cisco SD-AVC based on the details fetched. Network administrators can then selectively enable Cloud OnRamp for SaaS only for specific Microsoft 365 IP and URL categories. For more details on IP and URL categorization see details at aka.ms/IPURLBlog.

Cloud OnRamp can also enable customers to achieve higher availability and a better Microsoft 365 experience by intelligently switching between several network paths based on measured availability and performance characteristics. For example, switching between two Internet egress links from different ISPs or providing a fallback path through an alternative network egress in the regional hub or remote data center (Figure 1).

Cloud OnRamp for SaaS is integrated with Microsoft Informed Networking Routing Telemetry for Microsoft Exchange, Teams, and SharePoint which provides deeper visibility into network and application performance. With Microsoft's Informed Network Routing solution, application telemetry is used while deciding network path so that the application point of view is considered, and provides an optimal user experience. As part of this solution, Cisco Catalyst SD-WAN Analytics receives application telemetry data from Microsoft and co-relates it with network telemetry data to compute the best path that is used by SD-WAN routers to optimally route the Microsoft 365 traffic.

Additionally, Cisco Catalyst SD-WAN Analytics provides enhanced visibility and insights for the Microsoft 365 informed network routing by providing visibility into network Quality of Experience (QoE) metrics and Microsoft telemetry metrics for each available path. This helps in monitoring the traffic and application experience and provides insights to troubleshoot easily in case of user experience issues. Microsoft 365 path analytics also provides visibility into Microsoft 365 traffic over a period so network operators can easily understand and visualize which path is better and which path is being used for Microsoft 365. They can further correlate change in network path with the changes in network and application metrics.

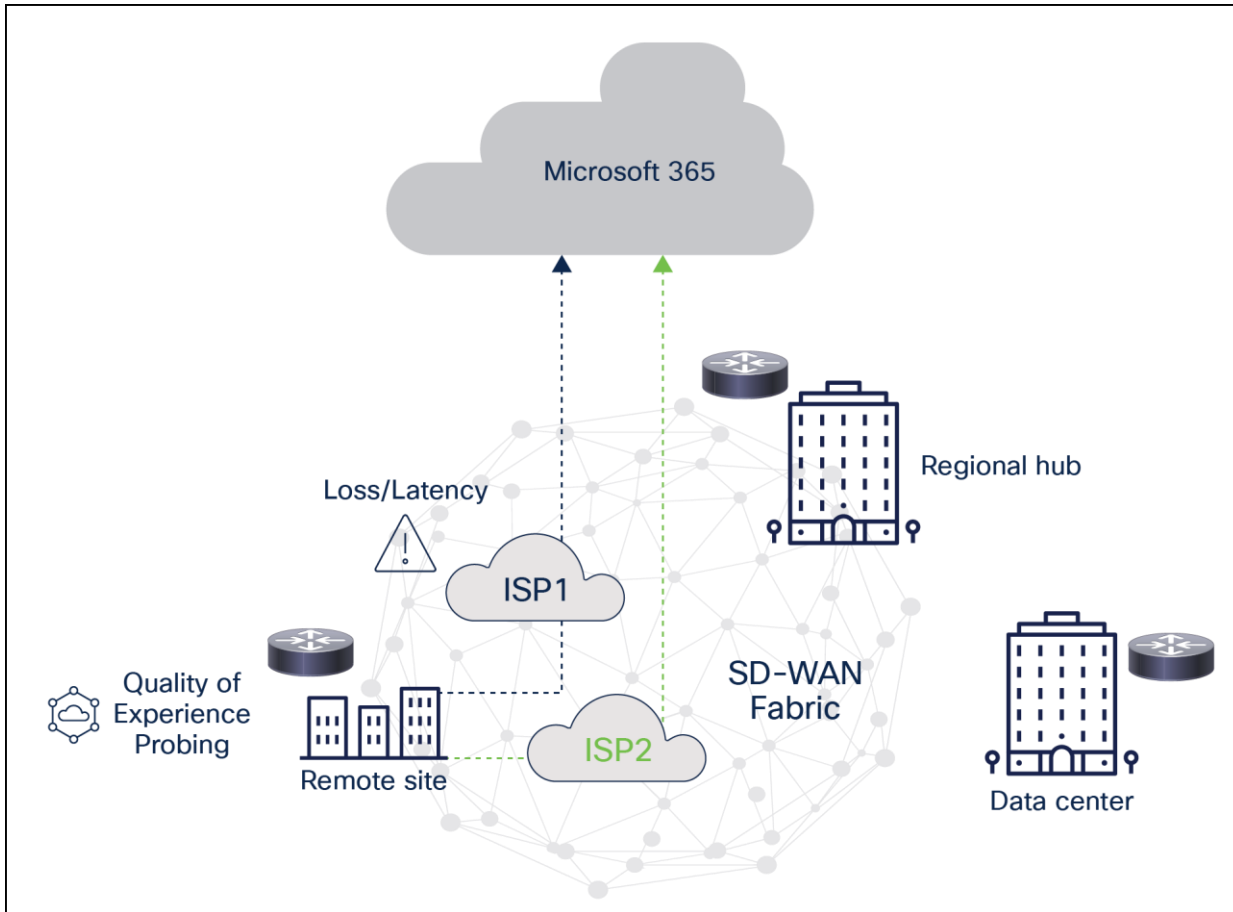


Figure 1.
Direct cloud access from a remote branch

Use case 2: Cloud access through the most optimal regional hub or carrier-neutral facility

For some enterprises it may not be practical to get Internet connectivity directly to every branch, and as an intermediate step they may want to use a regional hub egress architecture for their Microsoft 365 traffic. While such architecture may not offer the same performance level and cost-effectiveness as local and direct Internet exit, Cisco Catalyst SD-WAN can help ensure the best possible path through the available regional hub infrastructure.

In such deployments, Cloud OnRamp can be deployed in a gateway mode, helping ensure that the optimal regional gateway is dynamically chosen for the customer’s Microsoft 365 application traffic (Figure 2).

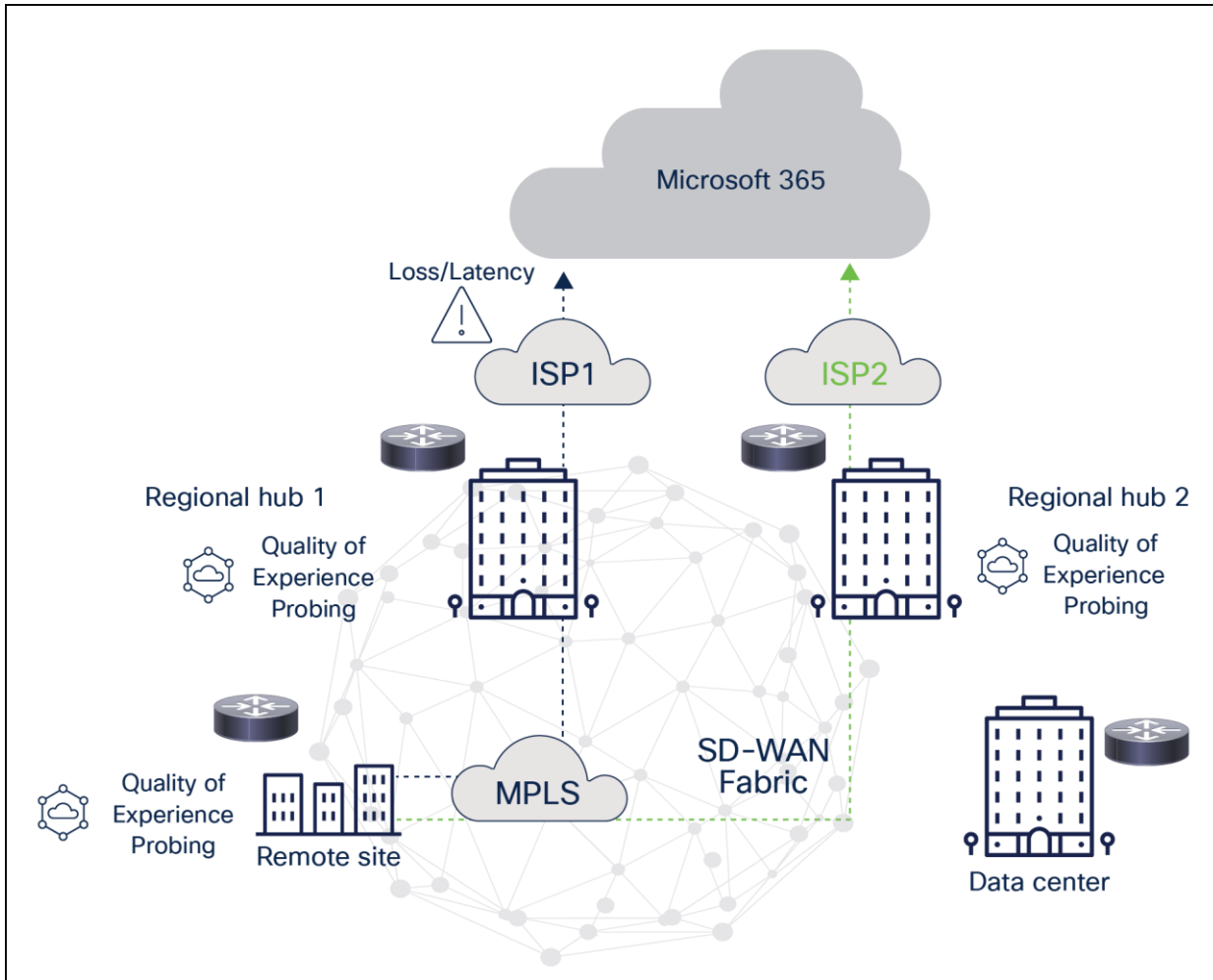


Figure 2.
Cloud access through the most optimal regional hub

Use case 3: Local Internet access through secure web gateways

In some deployments, enterprises connect remote branches to the SD-WAN fabric using inexpensive broadband Internet circuits, and they want to apply differentiated security policies depending on the types of services users are connecting to. For example, instead of sending all branch traffic to a Secure Web Gateway (SWG) or Cloud Access Security Broker (CASB), an enterprise may wish to enforce its IT security policies in a targeted manner by routing regular Internet traffic through an SWG, while allowing performance-optimal direct connectivity for a limited set of sanctioned and trusted SaaS applications, such as Microsoft 365. In such scenarios, Cloud OnRamp for SaaS can be set up to dynamically choose the optimal path among multiple ISPs, both for applications permitted to go directly and for applications that are routable through the SWG per enterprise policy (Figure 3).

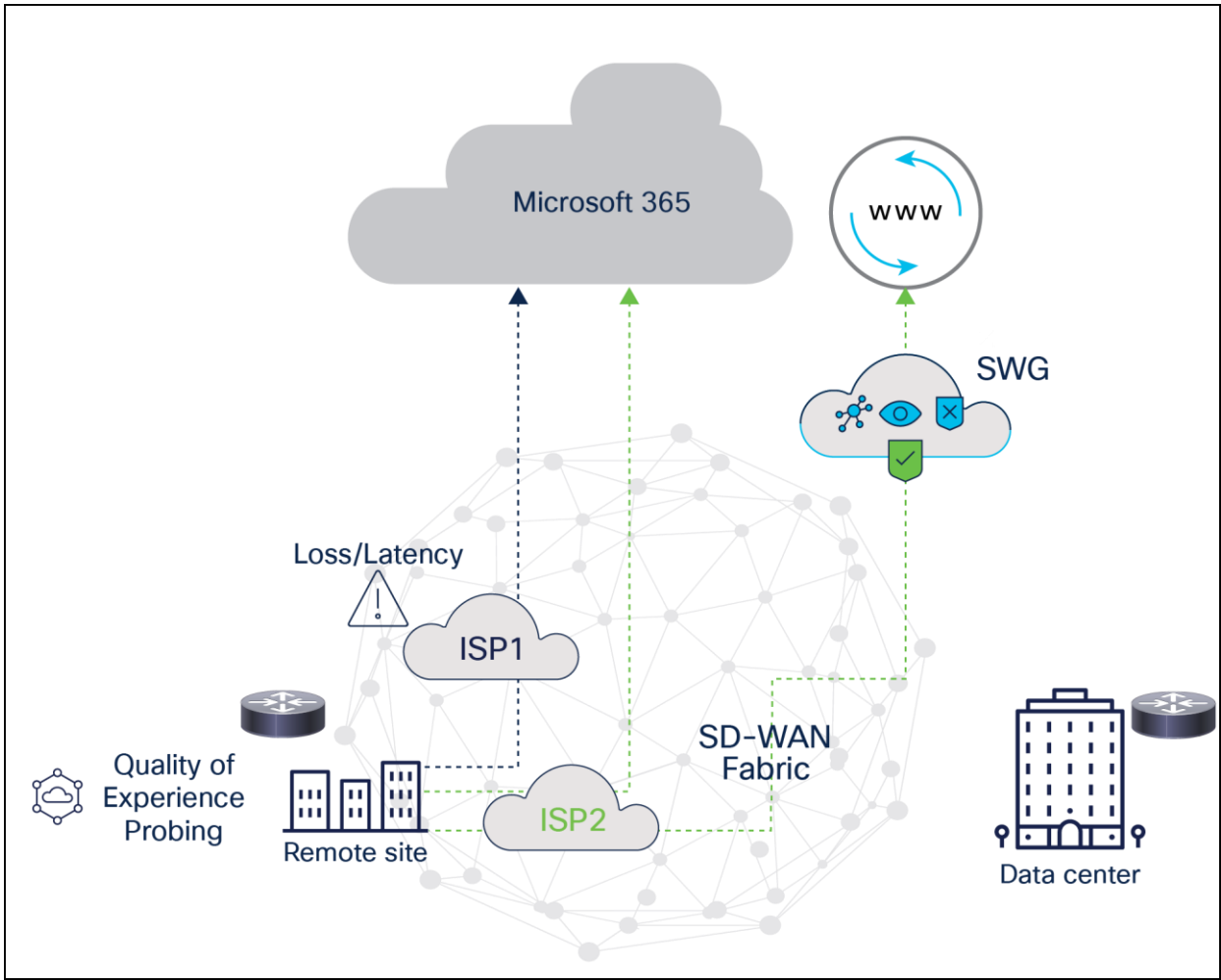


Figure 3.
Local Internet access via secure web gateways

Summary

- Cisco Catalyst SD-WAN technology enables enterprises to build a scalable and carrier-neutral WAN infrastructure, allowing them to reduce WAN transport costs and network operational expenses.
- Cisco Catalyst SD-WAN enables customers to apply business-centric, application-aware, and differentiated routing policies – providing end users at the branch direct connectivity to performance-intensive trusted applications, such as Microsoft 365, while routing generic Internet traffic via SWGs, CASBs, or the customer’s data center.
- Enterprises can leverage Cisco’s Cloud OnRamp for SaaS capabilities to intelligently route Microsoft 365 traffic, providing a fast, secure, and reliable end-user experience.
- All paths to Microsoft 365 from each circuit at the branch, regional hub, and data center will be monitored continuously for performance, and the application traffic will be dynamically routed to the best-performing path without requiring human intervention.
- Cloud OnRamp for SaaS provides network administrators superior real-time and historical visibility into application performance through a quality-of-experience metric.

Americas Headquarters
Cisco Systems, Inc.
San Jose, CA

Asia Pacific Headquarters
Cisco Systems (USA) Pte. Ltd.
Singapore

Europe Headquarters
Cisco Systems International BV Amsterdam,
The Netherlands

Cisco has more than 200 offices worldwide. Addresses, phone numbers, and fax numbers are listed on the Cisco Website at <https://www.cisco.com/go/offices>.

Cisco and the Cisco logo are trademarks or registered trademarks of Cisco and/or its affiliates in the U.S. and other countries. To view a list of Cisco trademarks, go to this URL: <https://www.cisco.com/go/trademarks>. Third-party trademarks mentioned are the property of their respective owners. The use of the word partner does not imply a partnership relationship between Cisco and any other company. (1110R)