

Cisco Business Dashboard/ Cisco Business Dashboard Lite

Manage One Network, Not a Collection of Devices

Contents

Highlights	3
Product overview	3
Features	4
Specifications	5
Ordering information	7
More information	8
Cisco environmental sustainability	8
Cisco Capital	9
For more information	9
Document history	10

Highlights

- Purpose-built management tool for Cisco Catalyst 1200 and 1300 series switches, Cisco® Business switches, routers, and wireless access points.
- Discover, monitor, and configure the network from a single interface.
- Provides remote access to sites without VPNs or special firewall configuration.
- Simple to deploy and easy to operate.

Product overview

Cisco Business Dashboard (CBD) is a network management tool for deploying and maintaining Cisco Catalyst 1200 and 1300 series switches, Cisco Business switches, routers, and wireless access points. Cisco Business Dashboard simplifies challenges traditionally associated with network management and operations. It allows you to quickly discover the topology of a new network, generates a detailed inventory of the installed equipment, makes changes where necessary, monitors the network, and automates lifecycle management. With features such as automatic firmware updates and reporting on lifecycle and maintenance information, Cisco Business Dashboard helps ensure that your network remains up to date and fully supported.

Cisco Business Dashboard Lite (CBD Lite) is a simplified version of Cisco Business Dashboard. It retains the core features of the original product while reducing complexity and resource usage. This makes it suitable for users who need basic functionality without the additional overhead of the full product.

Figure 1 and Figure 2 show different views of the application at work, while Figure 3 shows a typical deployment of CBD and CBD Lite.

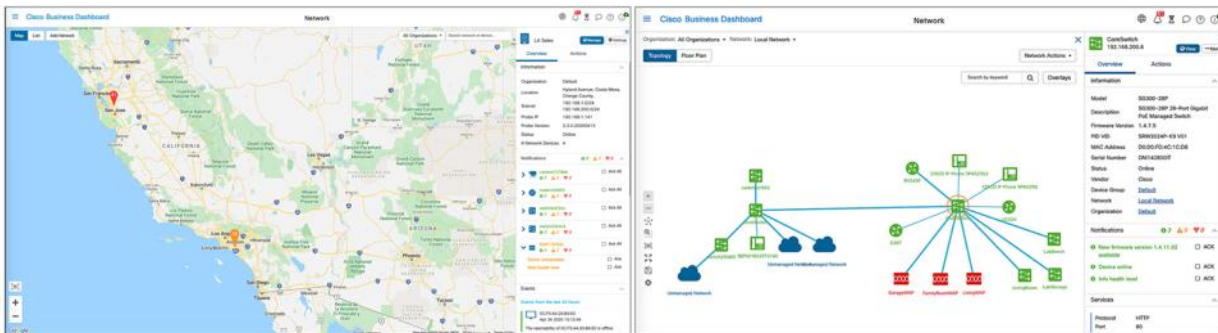


Figure 1.
Network map and Site topology

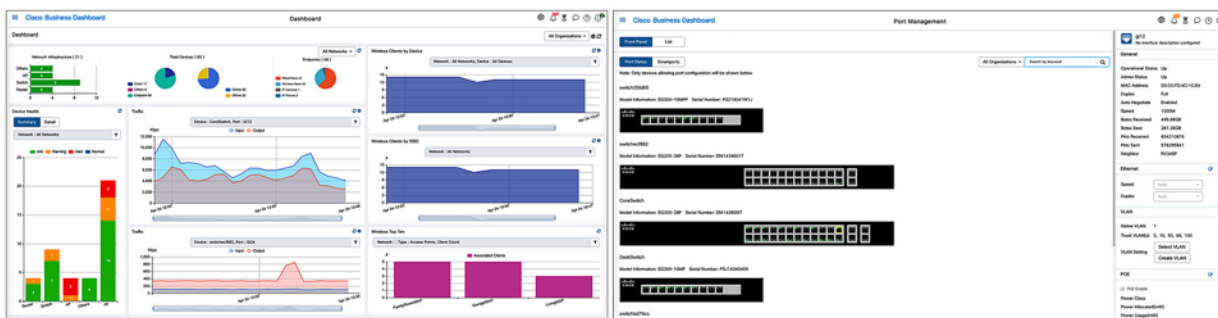


Figure 2.
Monitoring dashboard and Front panel view

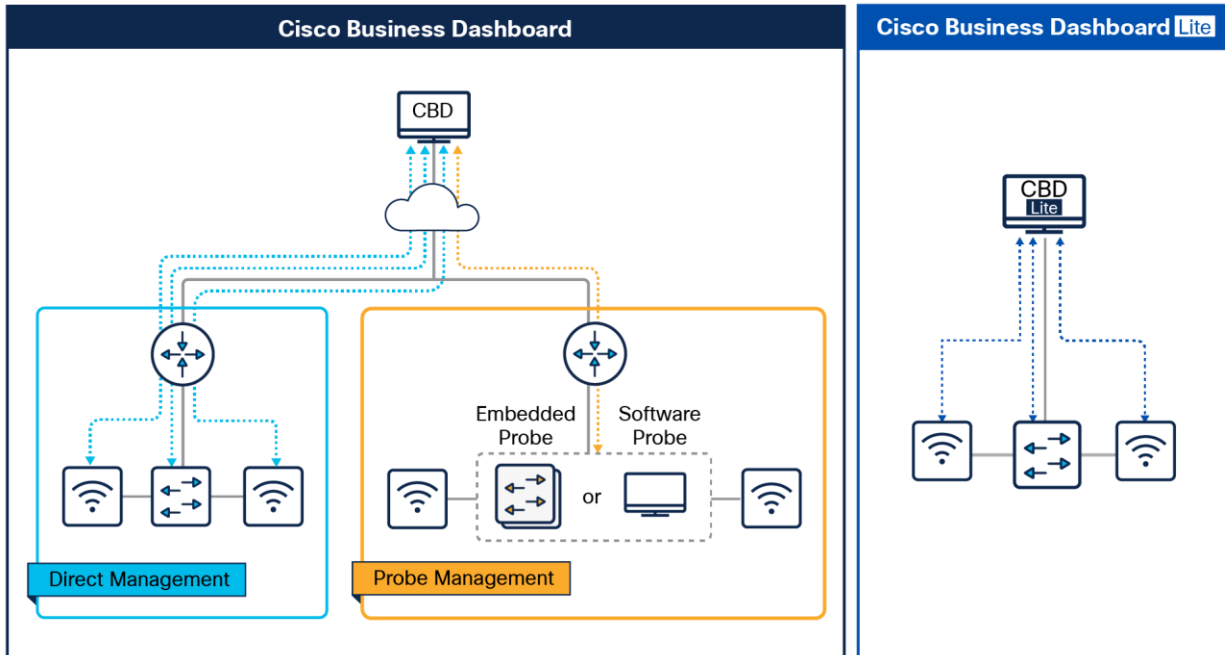


Figure 3.
Typical deployment

Features

- Purpose-built for Cisco Catalyst 1200 and 1300 series switches, Cisco Business switches, routers, and wireless access points.
- Automatically discovers the network devices and provides a topology diagram and inventory report. Click to access detailed information about these devices.
- Manage networks across multiple sites and customers from a single pane of glass.
- A customizable monitoring dashboard allows you to easily see the state of the network and how it is performing. Be alerted automatically to important events such as network devices going offline.
- Provides a single interface to configure system information, wireless networks, virtual LANs, and Ethernet switching.
- Offers automatic notification of firmware updates. Click to download and apply updates to devices.
- Detailed reports show lifecycle information about network devices—including maintenance and warranty status and end-of-life bulletins—and performance reports for wireless networks.
- Offers troubleshooting tools, including remote access to sites and devices, and the Network Show Tech—an archive of diagnostic information for the network that can easily be shared with technical support staff.
- Provides an Application Programming Interface (API) that allows integration with third-party applications. See <https://cisco.com/go/cbd-api> for details.
- Integrates with popular Professional Service Automation (PSA) tools such as ConnectWise Manage.
- For a quick comparison of features between CBD and CBD Lite, please refer to [CBD and CBD Lite Feature Comparison](#).

Specifications

Table 1 lists the specifications for Cisco Business Dashboard.

Table 1. Specifications

Specifications	Description
Management protocols	Cisco Discovery Protocol (CDP) Link-Layer Discovery Protocol (LLDP) Multicast DNS/DNS Service Discovery (Bonjour) RESTCONF Simple Network Management Protocol (SNMP)
Virtualization package formats	Open Virtualization Format Archive (OVA) Microsoft Hyper-V Virtual Machine Archive Amazon Machine Image (AMI) – available from the AWS Marketplace Microsoft Azure Virtual Machine - available from Microsoft Azure Marketplace
Dashboard System Requirements	
Hypervisor support	Microsoft Hyper-V Oracle VirtualBox VMware ESXi, Fusion, and Workstation Amazon Web Services (AWS) Microsoft Azure
OS requirements	Ubuntu Linux version 22.04.x
CPU requirements	64-bit Intel architecture 2x vCPU (up to 300 network devices under management) 16x vCPU (up to 3000 network devices under management)
Memory requirements	4GB (up to 300 network devices under management) 32GB (up to 3000 network devices under management)
Disk requirements	60GB
Supported browsers	Apple Safari (macOS only), Google Chrome, Microsoft Edge, Mozilla Firefox

Specifications	Description
Probe System Requirements	
Hypervisor support	Microsoft Hyper-V Oracle VirtualBox VMware ESXi, Fusion, and Workstation
OS requirements	Ubuntu Linux version 22.04.x Raspbian Bullseye Linux
CPU requirements	1x 64-bit Intel architecture vCPU Raspberry Pi 3 Model B+ Raspberry Pi 4 Model B Select Cisco Business devices include the probe application embedded in the device firmware.
Memory requirements	1GB
Disk requirements	10GB
Supported browsers	Apple Safari (macOS only), Google Chrome, Microsoft Edge, Mozilla Firefox
Network Device Support	
Supported devices	Refer to the Cisco Business Dashboard - Device Support List in the Cisco Business Dashboard product documentation
Embedded Probe Support	Select Cisco Business devices include the probe application embedded in the device firmware. Refer to the Cisco Business Dashboard - Device Support List for details.
Direct Device Management	Select Cisco Business devices may be managed by Cisco Business Dashboard without a probe. Refer to the Cisco Business Dashboard - Device Support List for details.

Table 2 lists the specifications for Cisco Business Dashboard Lite.

Table 2. Specifications for Cisco Business Dashboard Lite

Specifications	Description
Management protocols	Cisco Discovery Protocol (CDP) Link-Layer Discovery Protocol (LLDP) Multicast DNS/DNS Service Discovery (Bonjour) RESTCONF Proprietary web services APIs
OS requirements	Microsoft Windows

Specifications	Description
CPU/Memory requirements	Any standard Windows PC configuration, with no special CPU/Memory requirements. (up to 25 network devices under management)
Disk requirements	3GB free disk space
Supported browsers	Apple Safari (macOS only), Google Chrome, Microsoft Edge, Mozilla Firefox
Supported devices	Refer to the Cisco Business Dashboard Lite – Device Support List for details

Ordering information

Cisco Business Dashboard is licensed based on the number of network devices being managed. Licenses are required only for the Cisco Business and Cisco Small Business products in the network, and include device licenses, required for using Cisco Business Dashboard, and integration licenses, required when Cisco Business Dashboard is being used with select third-party applications such as Remote Monitoring and Management (RMM) tools. An installation of Cisco Business Dashboard includes device licenses for up to 25 devices. Any devices in excess of 25 will require the purchase of additional device licenses. Licenses include phone support from the Cisco Business Support Center and software updates for Cisco Business Dashboard for the duration of the license term.

Device licenses may be ordered in two different ways: 1) as stand-alone license packs that will expire at the end of the term, and 2) as a subscription with automatic invoicing and renewal at the end of the term. Not all Cisco resellers offer the subscription option, so check with your reseller prior to making a selection. Device licenses may also be purchased on an hourly basis through Amazon Web Services by selecting the Cisco Business Dashboard (Metered) product.

Option 1: Stand-alone license packs

You can order licenses in packs of various quantities, with a term of 1 year. The tables below list the part numbers of the different license packs.

Table 3. Device license part numbers

Part Number	Description
LS-CBD-1-1Y=	Single device license for Cisco Business Dashboard - 1 year
LS-CBD-15-1Y=	15-device license for Cisco Business Dashboard - 1 year
LS-CBD-25-1Y=	25-device license for Cisco Business Dashboard - 1 year
LS-CBD-50-1Y=	50-device license for Cisco Business Dashboard - 1 year

When integrating Cisco Business Dashboard with the Kaseya VSA Remote Monitoring and Management platform using the Cisco FindIT Plugin for Kaseya, integration licenses will be required for each device being monitored through the Kaseya VSA. Table 3 lists the integration license part numbers for the different license packs.

License parts are cumulative and may be used in any combination to obtain sufficient licenses for your network.

Option 2: Subscription licenses

You also can order device licenses as a subscription, with more flexible terms and quantities. However, licenses subscriptions may not be available through all distributors and partners. You should check with your partner or distributor ahead of time to ensure they can offer Cisco software subscriptions. The table below lists the subscription part numbers.

Table 4. Device license subscription part numbers

Part Number	Description
LS-CBD-SUB	License subscription for Cisco Business Dashboard
LS-CBD-DEV	Device license for Cisco Business Dashboard

Subscription licenses for integration with third-party applications are not available at this time.

More information

Cisco Business Dashboard licenses are managed using Cisco Smart Licensing. Prior to ordering Cisco Business Dashboard licenses, you must ensure you have a Cisco Smart Account. For more details on obtaining a Smart Account and Cisco Business Dashboard licensing in general, consult the Cisco Business Dashboard Ordering and Licensing Guide.

Cisco environmental sustainability

Information about Cisco's environmental sustainability policies and initiatives for our products, solutions, operations, and extended operations or supply chain is provided in the "Environment Sustainability" section of Cisco's [Corporate Social Responsibility](#) (CSR) Report.

Reference links to information about key environmental sustainability topics (mentioned in the "Environment Sustainability" section of the CSR Report) are provided in the following table:

Sustainability topic	Reference
Information on product material content laws and regulations	Materials
Information on electronic waste laws and regulations, including products, batteries, and packaging	WEEE compliance

Cisco makes the packaging data available for informational purposes only. It may not reflect the most current legal developments, and Cisco does not represent, warrant, or guarantee that it is complete, accurate, or up to date. This information is subject to change without notice.

Cisco Capital

Flexible payment solutions to help you achieve your objectives

Cisco Capital makes it easier to get the right technology to achieve your objectives, enable business transformation and help you stay competitive. We can help you reduce the total cost of ownership, conserve capital, and accelerate growth. In more than 100 countries, our flexible payment solutions can help you acquire hardware, software, services and complementary third-party equipment in easy, predictable payments. [Learn more.](#)

For more information

For more information about Cisco Business products and solutions, visit the Cisco Business Technology webpage or the product [page](#).

Document history

New or Revised Topic	Described In	Date
Data sheet Title	Included Cisco Business Dashboard Lite in the title	September 2024
Highlights	Added Cisco Catalyst 1200 and 1300 series switches in the first line of Highlights section	September 2024
Product overview	Added a paragraph about Cisco Business Dashboard Lite	September 2024
Typical deployment	Updated Figure 3 (Typical Deployment) diagram to incorporate the Cisco Business Dashboard Lite deployment alongside the Cisco Business Dashboard.	September 2024
Features	Added the link CBD and CBD Lite Feature Comparison at the end.	September 2024
Specifications	Added Table 2 that lists the specifications for Cisco Business Dashboard Lite.	September 2024

Americas Headquarters
Cisco Systems, Inc.
San Jose, CA

Asia Pacific Headquarters
Cisco Systems (USA) Pte. Ltd.
Singapore

Europe Headquarters
Cisco Systems International BV Amsterdam,
The Netherlands

Cisco has more than 200 offices worldwide. Addresses, phone numbers, and fax numbers are listed on the Cisco Website at <https://www.cisco.com/go/offices>.

Cisco and the Cisco logo are trademarks or registered trademarks of Cisco and/or its affiliates in the U.S. and other countries. To view a list of Cisco trademarks, go to this URL: <https://www.cisco.com/go/trademarks>. Third-party trademarks mentioned are the property of their respective owners. The use of the word partner does not imply a partnership relationship between Cisco and any other company. (1110R)