

Konfigurationsbeispiel für das Web-Passthrough des Wireless LAN-Controllers 5760/3850

Inhalt

[Einführung](#)

[Voraussetzungen](#)

[Anforderungen](#)

[Verwendete Komponenten](#)

[Web-Passthrough auf Wireless LAN-Controllern](#)

[Konfiguration](#)

[Konfiguration mit der CLI](#)

[Konfiguration mit der GUI](#)

[Clientbeispiel](#)

[Überprüfung](#)

[Fehlerbehebung](#)

Einführung

In diesem Dokument wird beschrieben, wie die Web-Passthrough-Funktion auf einem Wireless LAN Controller (WLC) konfiguriert wird.

Voraussetzungen

Anforderungen

In diesem Dokument wird davon ausgegangen, dass die Erstkonfigurationen bereits auf dem WLC abgeschlossen sind.

Verwendete Komponenten

Die Informationen in diesem Dokument basierend auf folgenden Software- und Hardware-Versionen:

- Ein 5760 WLC, der Code für Version 3.3 ausführt
- Cisco Aironet Lightweight Access Point der Serie 3600
- Native Wireless-Komponente von Microsoft Windows 7

Die Informationen in diesem Dokument beziehen sich auf Geräte in einer speziell eingerichteten

Testumgebung. Alle Geräte, die in diesem Dokument benutzt wurden, begannen mit einer gelöschten (Nichterfüllungs) Konfiguration. Wenn Ihr Netz Live ist, überprüfen Sie, ob Sie die mögliche Auswirkung jedes möglichen Befehls verstehen.

Web-Passthrough auf Wireless LAN-Controllern

Web-Passthrough ist eine Lösung, die in der Regel für den Gastzugriff verwendet wird. Der Prozess des Web-Passthrough ähnelt dem der Web-Authentifizierung, jedoch sind für den Web-Passthrough keine Authentifizierungsdaten erforderlich.

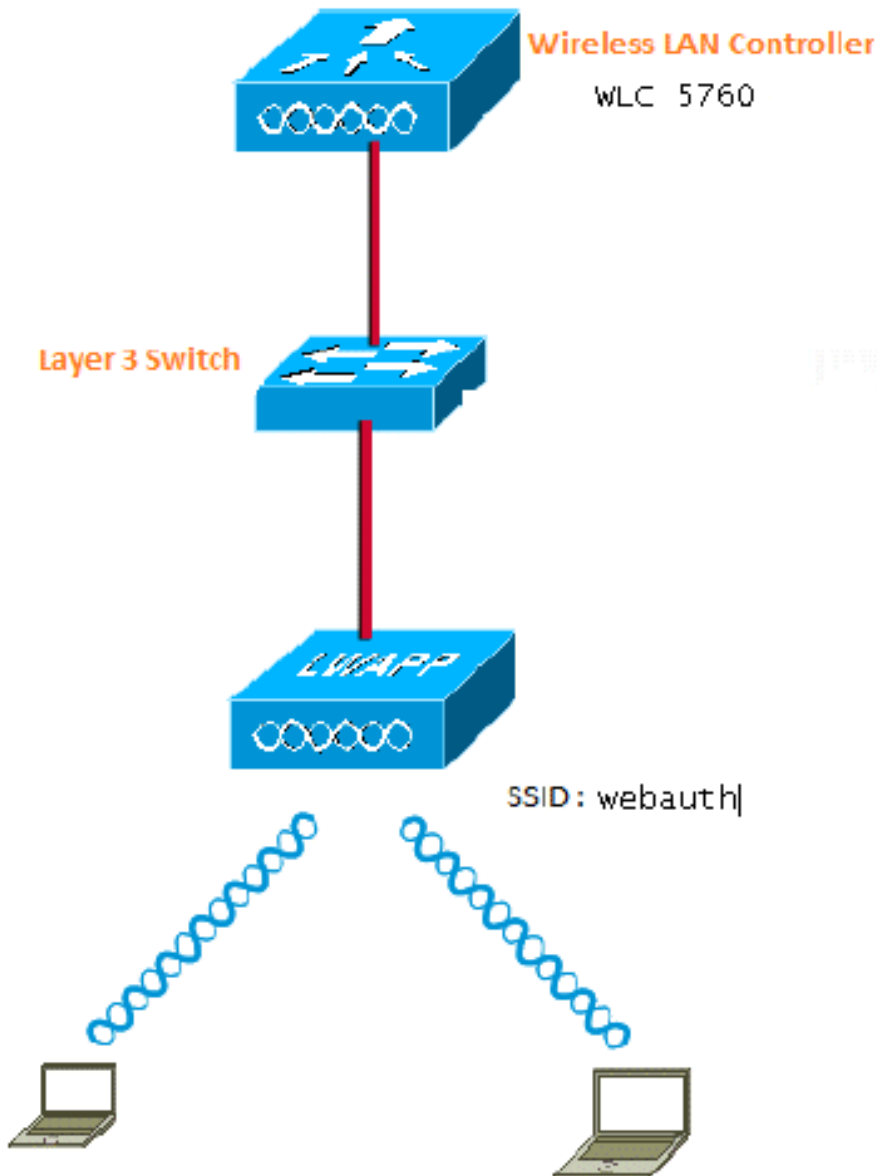
Beim Web-Passthrough werden Wireless-Benutzer auf die Seite mit den Nutzungsrichtlinien umgeleitet, wenn sie versuchen, das Internet zum ersten Mal zu verwenden. Sobald die Benutzer die Richtlinie akzeptieren, können sie im Internet surfen. Diese Umleitung zur Richtlinienseite wird vom WLC vorgenommen.

In diesem Beispiel wird eine VLAN-Schnittstelle auf einem separaten Subnetz des WLC erstellt. Anschließend wird ein separater Wireless LAN (WLAN)/Service Set Identifier (SSID) erstellt und mit Web-Passthrough konfiguriert, der dieser VLAN-Schnittstelle zugeordnet ist.

Hinweis: Der Web-Passthrough-Modus bietet keine Datenverschlüsselung.

Konfiguration

Das Netzwerkdiagramm ist wie folgt:



Sie können diese Konfiguration mit der CLI oder der GUI abschließen.

Konfiguration mit der CLI

Konfigurieren Sie DHCP-Snooping für die VLANs, die Sie für Clients verwenden. In diesem Beispiel wird **VLAN20** für Clients verwendet. Der Pool wird auf demselben WLC konfiguriert.

10GigabitEthernet1/0/1 vom **WLC 5760** wird mit dem Uplink-Switch verbunden. Wenn der DHCP-Server auf dem Server außerhalb des WLC oder auf einem externen DHCP-Server konfiguriert ist, müssen Sie den DHCP-Snooping- und Relay-Informationen vertrauen.

```
ip device tracking
ip dhcp snooping vlan 12,20,30,40
ip dhcp snooping
!
ip dhcp pool vlan20
network 20.20.20.0 255.255.255.0
```

```

default-router 20.20.20.1

interface Vlan20
 ip address 20.20.20.1 255.255.255.0

interface TenGigabitEthernet1/0/1
 switchport trunk native vlan 12
 switchport mode trunk
 ip dhcp relay information trusted
 ip dhcp snooping trust

parameter-map type webauth global
 type consent
 virtual-ip ipv4 192.168.200.1
!
!
parameter-map type webauth web
 type consent

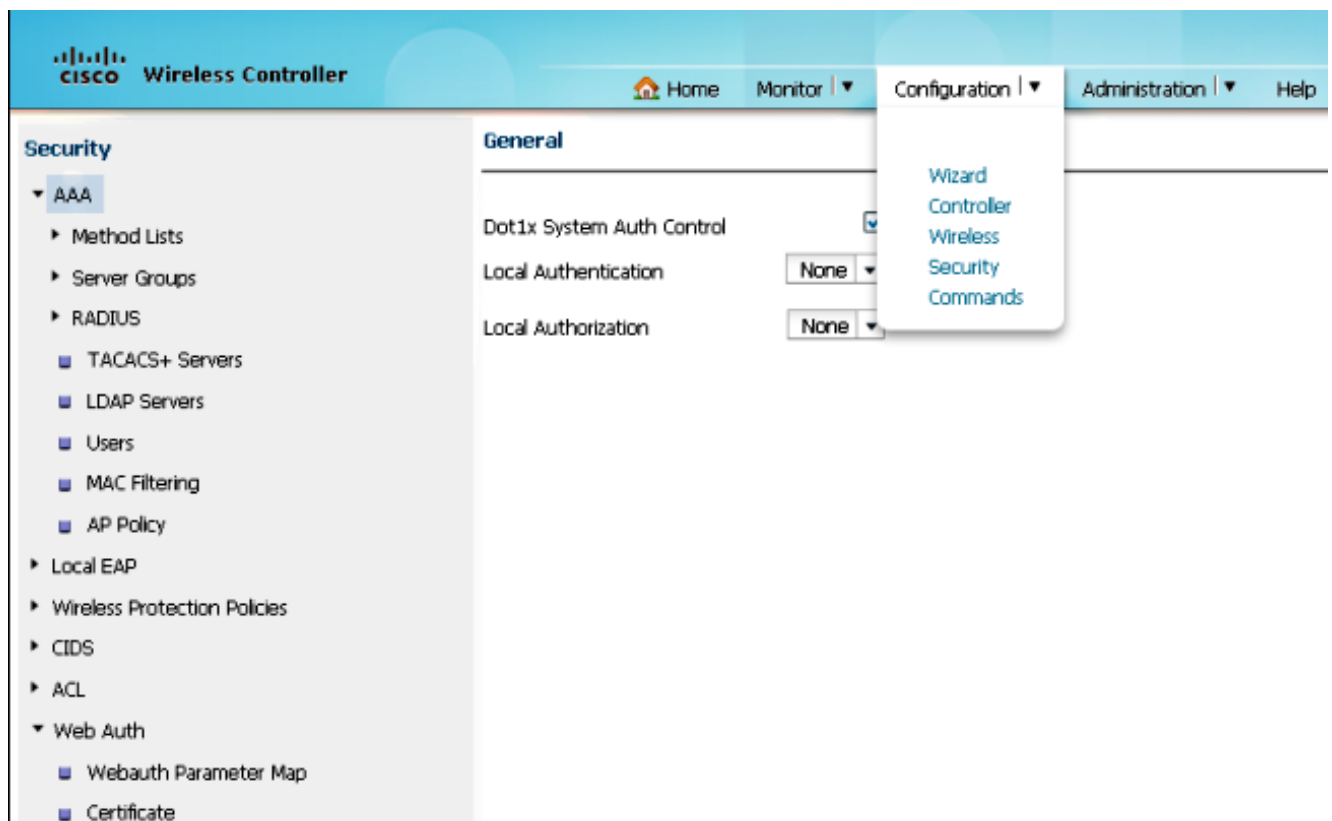
wlan Webauth 9 Webauth
 client vlan VLAN0020
 no security wpa
 no security wpa akm dot1x
 no security wpa wpa2
 no security wpa wpa2 ciphers aes
 security web-auth
 security web-auth parameter-map web
 session-timeout 1800

```

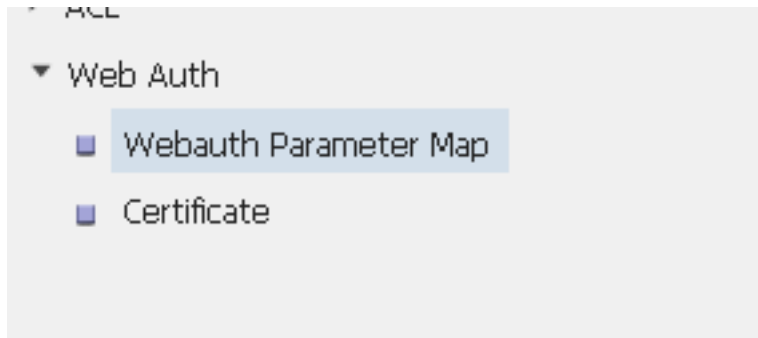
Konfiguration mit der GUI

Führen Sie diese Schritte aus, um die Konfiguration auf der Benutzeroberfläche durchzuführen.

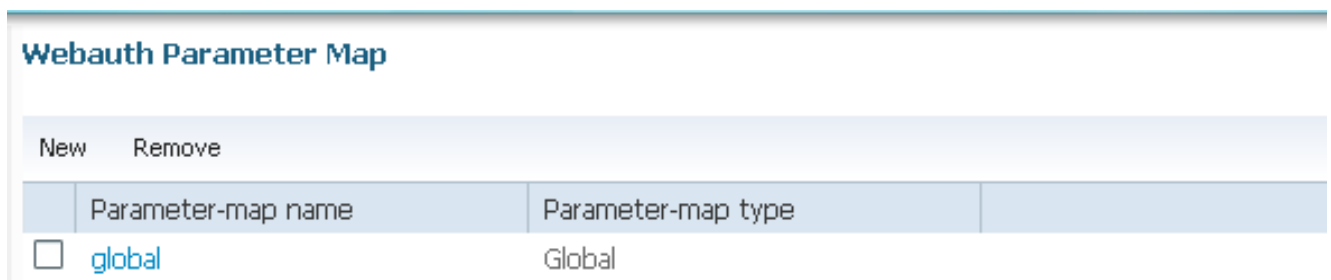
1. Navigieren Sie in der WLC-GUI zu **Configuration > Security**:



2. Navigieren Sie in der rechten unteren Ecke der **Security**-Seite zu **Webauth > Webauth Parameter Map**:



3. Wählen Sie **global** für die Standardparameterzuordnung aus:



4. Navigieren Sie zu **Webauth Parameter Map > Edit**, um die virtuelle IP-Adresse zu konfigurieren. In diesem Beispiel ist es **192.169.200.1**. Ändern Sie Type in **agree**, sodass der globale Parameter zur **Zustimmung** (Web-Passthrough) wird.

Hinweis: Es ist **nicht** obligatorisch, die globale Parameterzuordnung für die Zustimmung zu konfigurieren.

Webauth Parameter Map

Webauth Parameter Map > Edit

Parameter-map name	global
Banner	<div style="border: 1px solid black; height: 80px; width: 100%;"></div>
Maximum HTTP connections(1-200)	<input type="text" value="30"/>
Timeout (1-65535 in minutes)	<input type="text" value="2"/>
Type	<input type="text" value="consent"/>
Turn-on Consent with Email	<input type="checkbox"/>
Virtual IPv4 Address	<input type="text" value="192.168.200.1"/>
Virtual IPv4 hostname	<input type="text"/>

5. Erstellen Sie die Parameterzuordnung, und wählen Sie die **Zustimmung** für den Typ aus. In diesem Beispiel wird **web** als Parameterzuordnungsname verwendet, der unter dem WLAN für den Zugriff der Benutzer auf die Seite Consent (Zustimmung) verwendet wird.

Webauth Parameter Map

Webauth Parameter Map > Edit

Parameter-map name	web
Banner	<div style="border: 1px solid black; height: 80px; width: 100%;"></div>
Maximum HTTP connections(1-200)	<input type="text" value="30"/>
Timeout (1-65535 in minutes)	<input type="text" value="2"/>
Type	<input type="text" value="consent"/>
Turn-on Consent with Email	<input type="checkbox"/>

Im Folgenden finden Sie eine Screenshot-Darstellung der Parameterzuordnungen in der GUI:

Webauth Parameter Map

New Remove

	Parameter-map name	Parameter-map type	
<input type="checkbox"/>	global	Global	
<input type="checkbox"/>	web	Named	

6. Navigieren Sie in der WLC-GUI zu **Configuration > Wireless > WLAN**, um ein neues WLAN zu erstellen. In diesem Beispiel ist **Webauth** dem **VLAN20** zugeordnet:

WLAN
WLAN > Edit

General Security QOS AVC Advanced

Profile Name Webauth
Type WLAN
SSID Webauth
Status
Security Policies Web-Auth
(Modifications done under security tab will appear after applying the changes.)
Radio Policy All ▾
Interface/Interface Group(G) VLAN0020 ▾
Broadcast SSID
Multicast VLAN Feature

7. Navigieren Sie zu **WLAN > Edit > Security > Layer2**, und wählen Sie **None** for Layer 2 Security:

WLAN

WLAN > Edit

General Security QOS AVC Advanced

Layer2 Layer3 AAA Server

Layer 2 Security

MAC Filtering

Fast Transition

Over the DS

Reassociation Timeout

8. Navigieren Sie zu **WLAN > Edit > Security > Layer3**, und wählen Sie die entsprechende Einstellung für die **Webauth Parameter Map** aus. In diesem Beispiel ist es **Web**.

WLAN

WLAN > Edit

General Security QOS AVC Advanced

Layer2 Layer3 AAA Server

Web Policy

Conditional Web Redirect

Webauth Profile

Webauth Parameter Map

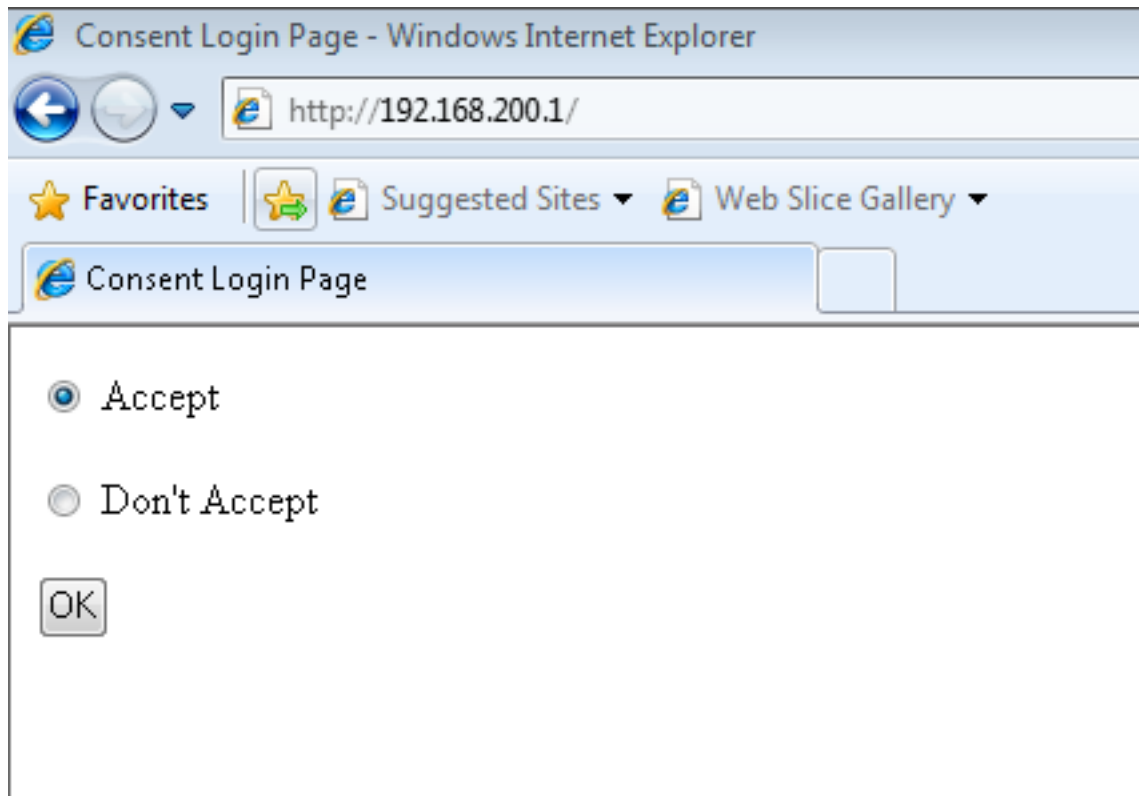
Webauth On-mac-filter Failure

Preauthentication IPv4 ACL

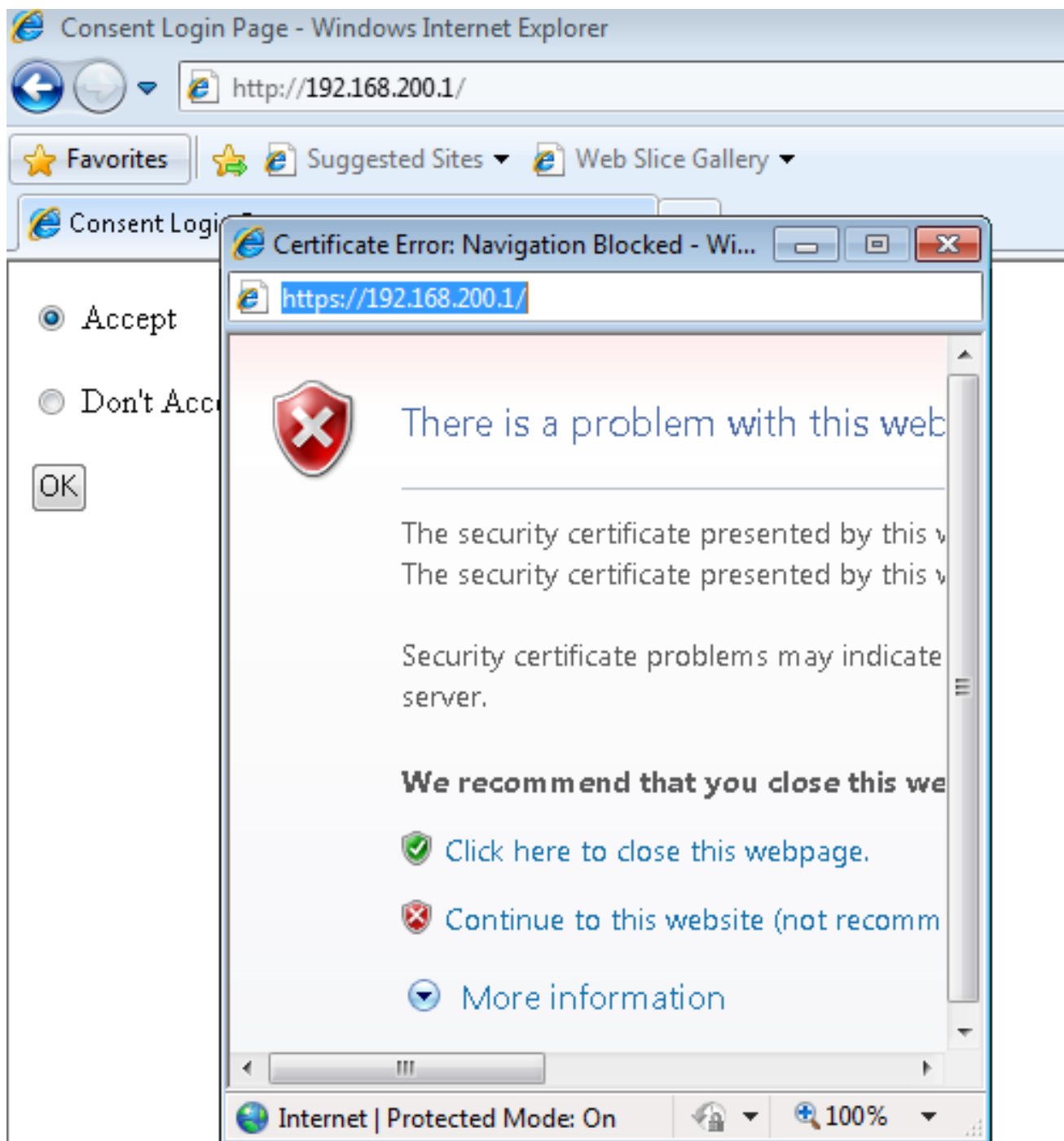
Preauthentication IPv6 ACL

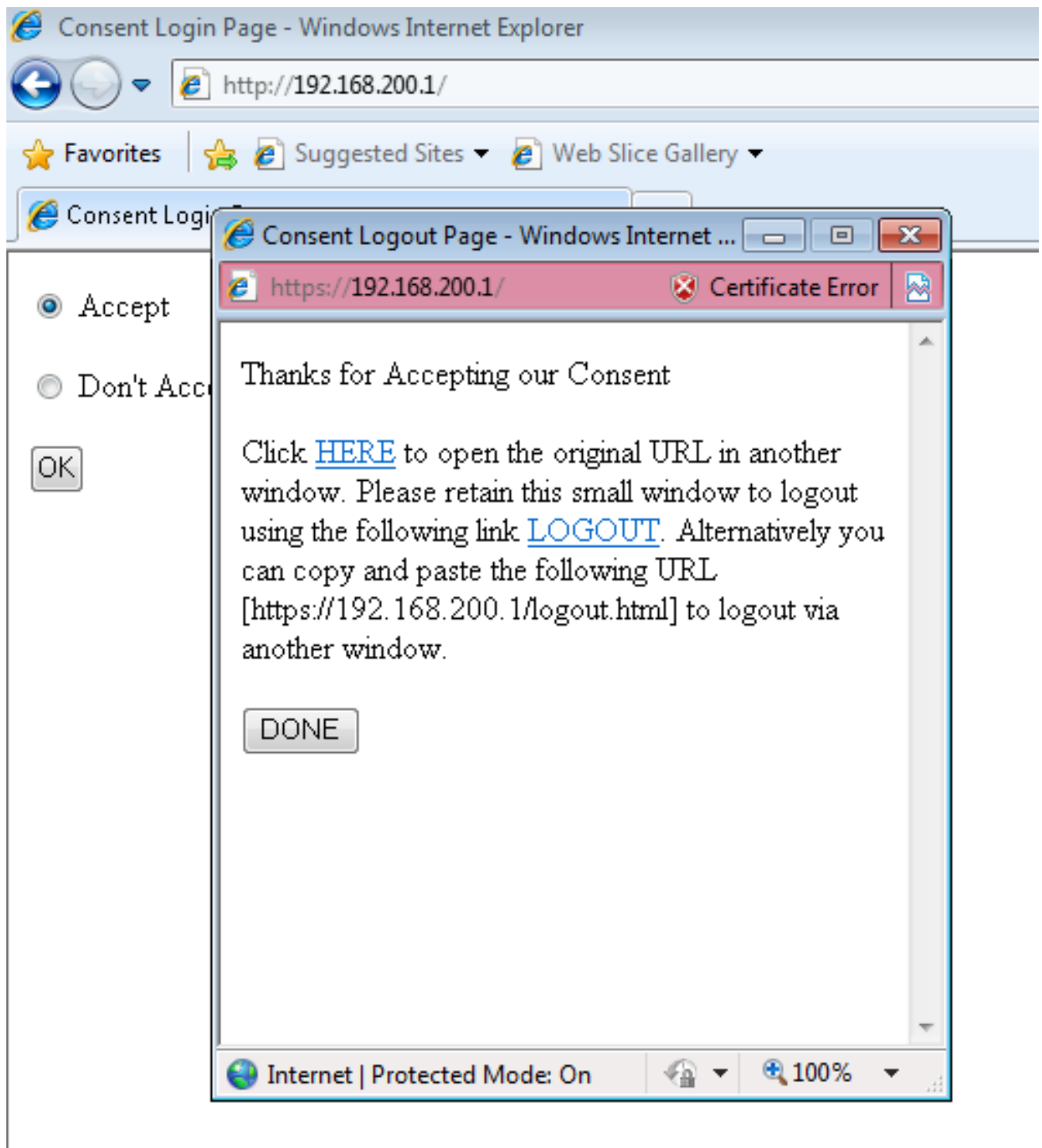
9. Speichern Sie die Konfiguration, und sie kann getestet werden.
10. Nachdem Sie eine Verbindung zum WLAN hergestellt haben, erhält der Client die IP-Adresse. Wenn Sie versuchen, den Browser mit der virtuellen IP-Adresse zu öffnen, wird die **Seite für die Einverständniserklärung** angezeigt, und Sie müssen auf das Optionsfeld **Akzeptieren** klicken.

Hinweis: Wenn Sie über eine gültige DNS-Konfiguration verfügen, müssen Sie die virtuelle IP-Adresse nicht manuell im Browser eingeben.



11. Wenn Sie auf **Akzeptieren** klicken, wird die Seite für die erfolgreiche Authentifizierung gestartet, auf der Sie zur angeforderten Seite navigieren können.





Clientbeispiel

Hier ist die Paketerfassung vom Client-Laptop, wenn der Client den DHCP empfängt:

No.	Time	Source	Destination	Protocol	Length	Source Port	Destination Port	Info
1	09:35:55.540590000	0.0.0.0	255.255.255.255	DHCP	346	68	67	DHCP Request - Transaction ID 0xd73023c4
2	09:35:55.548600000	20.20.20.1	20.20.20.6	DHCP	342	67	68	DHCP ACK - Transaction ID 0xd73023c4

Nachdem der Client die IP-Adresse erhalten hat, öffnet der Client den Browser und gibt die virtuelle IP-Adresse ein.

Hinweis: Wenn der DNS korrekt konfiguriert ist, müssen Sie die virtuelle IP-Adresse nicht im Browser eingeben.

162	09:36:09.57004000	20.20.20.6	20.20.20.255	BROWSER	220	138	138	Request Announcement CALO-PC
163	09:36:09.680160000	20.20.20.6	192.168.200.1	TCP	66			50128 > http [SYN] Seq=0 Wln=8192 Len=0 MSS=1460 WS=4 SACK_PERM=1
164	09:36:09.684132000	192.168.200.1	20.20.20.6	TCP	60			http > 50128 [SYN, ACK] Seq=0 Ack=1 Wln=4128 Len=0 MSS=1460
165	09:36:09.684634000	20.20.20.6	192.168.200.1	TCP	54			50128 > http [ACK] Seq=1 Ack=1 Wln=64240 Len=0
166	09:36:09.692903000	20.20.20.6	192.168.200.1	HTTP	462			GET / HTTP/1.1
167	09:36:09.701041000	192.168.200.1	20.20.20.6	TCP	1514			[TCP segment of a reassembled PDU]
168	09:36:09.913060000	20.20.20.6	192.168.200.1	TCP	54			50128 > http [ACK] Seq=409 Ack=1461 Wln=64240 Len=0
169	09:36:09.92031000	192.168.200.1	20.20.20.6	HTTP	234			HTTP/1.0 200 OK (text/html)
170	09:36:09.920862000	192.168.200.1	20.20.20.6	TCP	60			http > 50128 [FIN, PSH, ACK] Seq=1641 Ack=409 Wln=3720 Len=0
171	09:36:09.920918000	20.20.20.6	192.168.200.1	TCP	54			50128 > http [ACK] Seq=409 Ack=1642 Wln=64060 Len=0
172	09:36:09.921315000	20.20.20.6	192.168.200.1	TCP	54			50128 > http [FIN, ACK] Seq=409 Ack=1642 Wln=64060 Len=0
173	09:36:09.924874000	192.168.200.1	20.20.20.6	TCP	60			http > 50128 [ACK] Seq=1642 Ack=410 Wln=3720 Len=0
174	09:36:10.630917000	Fe80::11096:8168:c7df92::112		DHCPv6	149	546	547	sollicit xdr: 0x9c330 cid: 0001000119e580a69027136531f6

```

<
+ Internet Protocol version 4, Src: 20.20.20.6 (20.20.20.6), Dst: 1
+ Transmission Control Protocol, Src Port: 50128 (50128), Dst Port:
- Hypertext Transfer Protocol
  + GET / HTTP/1.1\r\n
    Accept: image/jpeg, application/x-ms-application, image/gif, ap
    Accept-Language: en-US\r\n
    User-Agent: Mozilla/4.0 (compatible; MSIE 8.0; windows NT 6.1;
    Accept-Encoding: gzip, deflate\r\n
    Host: 192.168.200.1\r\n
    Connection: Keep-Alive\r\n
    \r\n
    [Full request URI: http://192.168.200.1/]
    [HTTP request 1/1]
    [Response in frame: 169]

```

Da für diese Konfiguration keine Webauth-Zertifizierungen verwendet werden, gibt es bei dieser Paketerfassung CERT-Fehler:

194	09:36:14.086708000	20.20.20.6	192.168.200.1	TCP	66			50130 > https [SYN] Seq=0 Wln=8192 Len=0 MSS=1460 WS=4 SACK_PERM=1
195	09:36:14.090706000	192.168.200.1	20.20.20.6	TCP	60			https > 50130 [SYN, ACK] Seq=0 Ack=1 Wln=4128 Len=0 MSS=1460
196	09:36:14.090803000	20.20.20.6	192.168.200.1	TCP	54			50130 > https [ACK] Seq=1 Ack=1 Wln=64240 Len=0
197	09:36:14.091283000	20.20.20.6	192.168.200.1	SSLv3	142			Client hello
198	09:36:14.096902000	192.168.200.1	20.20.20.6	SSLv3	739			Server hello, Certificate, Server Hello Done
199	09:36:14.097876000	20.20.20.6	192.168.200.1	SSLv3	262			Client key exchange, Change Cipher spec, Encrypted Handshake Message
200	09:36:14.107044000	192.168.200.1	20.20.20.6	SSLv3	125			Change Cipher spec, Encrypted Handshake Message
201	09:36:14.117824000	20.20.20.6	192.168.200.1	TCP	54			50130 > https [FIN, ACK] Seq=297 Ack=757 Wln=63484 Len=0
202	09:36:14.119365000	20.20.20.6	192.168.200.1	TCP	66			50131 > https [SYN] Seq=0 Wln=8192 Len=0 MSS=1460 WS=4 SACK_PERM=1
203	09:36:14.125083000	192.168.200.1	20.20.20.6	TCP	60			https > 50130 [ACK] Seq=757 Ack=298 Wln=3832 Len=0
204	09:36:14.125191000	192.168.200.1	20.20.20.6	TCP	60			https > 50130 [FIN, PSH, ACK] Seq=757 Ack=298 Wln=3832 Len=0
205	09:36:14.125245000	20.20.20.6	192.168.200.1	TCP	54			50130 > https [ACK] Seq=298 Ack=758 Wln=63484 Len=0
206	09:36:14.125447000	192.168.200.1	20.20.20.6	TCP	60			https > 50131 [SYN, ACK] Seq=0 Ack=1 Wln=4128 Len=0 MSS=1460
207	09:36:14.125506000	20.20.20.6	192.168.200.1	TCP	54			50131 > https [ACK] Seq=1 Ack=1 Wln=64240 Len=0
208	09:36:14.126314000	20.20.20.6	192.168.200.1	SSLv3	142			Client hello
209	09:36:14.132508000	192.168.200.1	20.20.20.6	SSLv3	739			Server hello, Certificate, Server Hello Done
210	09:36:14.133515000	20.20.20.6	192.168.200.1	SSLv3	262			Client key exchange, Change Cipher spec, Encrypted Handshake Message
211	09:36:14.142340000	192.168.200.1	20.20.20.6	SSLv3	125			Change Cipher spec, Encrypted Handshake Message
212	09:36:14.152530000	20.20.20.6	192.168.200.1	SSLv3	633			Application data
213	09:36:14.166282000	192.168.200.1	20.20.20.6	TCP	1514			[TCP segment of a reassembled PDU]
214	09:36:14.166484000	192.168.200.1	20.20.20.6	SSLv3	186			Application data
215	09:36:14.166546000	20.20.20.6	192.168.200.1	TCP	54			50131 > https [ACK] Seq=376 Ack=2350 Wln=64240 Len=0
216	09:36:14.167248000	20.20.20.6	192.168.200.1	TCP	54			50131 > https [FIN, ACK] Seq=876 Ack=2350 Wln=64240 Len=0
217	09:36:14.172133000	192.168.200.1	20.20.20.6	TCP	60			https > 50131 [ACK] Seq=2350 Ack=877 Wln=3253 Len=0

Nach erfolgreicher Authentifizierung befindet sich der Client auf der WLC-GUI im **RUN**-Status.

Client

Client > Detail

General

AVC Statistics

Client Properties

Mac Address	00:21:6A:89:51:CA
IPv4 Address	20.20.20.6
IPv6 Address	None
User Name	0021.6a89.51ca
Port Number	1
Interface	VLAN0020
Vlan ID	20
COX Version	4
E2E Version	1
Mobility State	Local
Policy Manager State	RUN
Management Frame Protection	Disabled
Uptime(sec)	33
Power Save Mode	OFF
Current TxRateSet	None
Data RateSet	6.0,9.0,12.0,18.0,24.0,36.0,48.0,54.0

AP Properties

AP Address	C8:F9:F9:83:42:60
AP Name	SURBG-3602
AP Type	802.11n
Wlan Profile	Webauth
Status	Associated
Association ID	1
802.11 Authentication	Open System
Reason Code	1
Status Code	0
CF Pollable	Not implemented
CF Pollable Request	Not implemented
Short Preamble	Not implemented
PBCC	Not implemented
Channel Agility	Not implemented
Fast BSS Transition	Not implemented
FT Reassociation Timeout	20
Session Timeout	1800
WEP state	Disabled

Security Information

Security Policy Completed	Enabled
Policy Type	N/A
Encryption Cypher	None
EAP type	Not Applicable
SNMP Nac State	None

Client Statistics

Bytes Received	0
Bytes Sent	0
Packets Received	0
Packets Sent	0
Policy Errors	0

Überprüfung

Für diese Konfiguration ist derzeit kein Überprüfungsverfahren verfügbar.

Fehlerbehebung

Hinweis: Da Debugger prozessorintensiv sind, sollten Sie das Debuggen in einem geplanten Wartungsfenster ausführen.

Geben Sie diese Debugger ein, um eine Fehlerbehebung für Ihre Konfiguration durchzuführen:

```
debug client mac-address 00:21:6A:89:51:CA
debug ip http all
debug access-session all
```

```
All Auth Manager debugging is on
SURBG-5760#debug ip admission all
```

All IP admission debugging is on

5760#**show debugging**

IP admission:

IP admission AAA event debugging is on
IP admission ACL event debugging is on
IP admission session-mgr debugging is on
IP admission development debugging is on
IP admission denial-of-service debugging is on
IP admission EAPoUDP posture validation debugging is on
IP admission error debugging is on
IP admission HTTP proxy daemon debugging is on
IP admission L3 idle-timer debugging is on
IP admission input-feature debugging is on
IP admission io debugging is on
IP admission page debugging is on
IP admission qualify debugging is on
IP admission session debugging is on
IP admission state debugging is on
IP admission timer debugging is on
IP admission client debugging is on
IP admission high-availability debugging is on

HTTP Server:

HTTP Server transaction debugging is on
HTTP Server tokens debugging is on
HTTP Server EZSetup debugging is on
HTTP Server URL debugging is on
HTTP Server Authentication debugging is on
HTTP Server Side Includes debugging is on
HTTP Application Inout debugging is on
HTTP Application Detail debugging is on
HTTP Server Error debugging is on
HTTP SSL Error debugging is on

Nova Platform:

dot11/state debugging is on
pem/events debugging is on
ft/events debugging is on
client/mac-addr debugging is on
dot11/detail debugging is on
mac/ filters[string 00:21:6A:89:51:C] debugging is on
dot11/error debugging is on
dot11/mobile debugging is on
pem/state debugging is on

SURBG-5760#

***Oct 9 04:16:37.962: %IOSXE-7-PLATFORM: 1 process wcm: Processing assoc-req station: 0021.6a89.51ca AP: c8f9.f983.4260 -01 thread:-114119824**
*Oct 9 04:16:37.962: %IOSXE-7-PLATFORM: 1 process wcm: 0021.6a89.51ca Adding mobile on LWAPP AP c8f9.f983.4260 (1)
*Oct 9 04:16:37.962: %IOSXE-7-PLATFORM: 1 process wcm: 0021.6a89.51ca Creating WL station entry for client - rc 0
*Oct 9 04:16:37.962: %IOSXE-7-PLATFORM: 1 process wcm: 0021.6a89.51ca Association received from mobile on AP c8f9.f983.4260
*Oct 9 04:16:37.962: %IOSXE-7-PLATFORM: 1 process wcm: 0021.6a89.51ca qos upstream policy is unknown and downstream policy is unknown
*Oct 9 04:16:37.962: %IOSXE-7-PLATFORM: 1 process wcm: 0021.6a89.51ca ap Changed 0 wlanChanged 0 mscb ipAddr 0.0.0.0, apf RadiusOverride 0x0, numIPv6Addr=0
*Oct 9 04:16:37.962: %IOSXE-7-PLATFORM: 1 process wcm: 0021.6a89.51ca Applying WLAN policy on MSCB.
*Oct 9 04:16:37.963: %IOSXE-7-PLATFORM: 1 process wcm: 0021.6a89.51ca Applying WLAN ACL policies to client
*Oct 9 04:16:37.963: %IOSXE-7-PLATFORM: 1 process wcm: 0021.6a89.51ca No

Interface ACL used for Wireless client in WCM(NGWC)

***Oct 9 04:16:37.963: %IOSXE-7-PLATFORM: 1 process wcm: 0021.6a89.51ca Applying site-specific IPv6 override for station 0021.6a89.51ca - vapId 9, site 'default-group', interface 'VLAN0020'**

*Oct 9 04:16:37.963: %IOSXE-7-PLATFORM: 1 process wcm: 0021.6a89.51ca Applying local bridging Interface Policy for station 0021.6a89.51ca - vlan 20, interface 'VLAN0020'

*Oct 9 04:16:37.963: %IOSXE-7-PLATFORM: 1 process wcm: 0021.6a89.51ca STA - rates (8): 140 18 152 36 176 72 96 108 0 0 0 0 0 0 0

*Oct 9 04:16:37.963: %IOSXE-7-PLATFORM: 1 process wcm: 0021.6a89.51ca new capwap_wtp_iif_id 45e7800000000c, sm capwap_wtp_iif_id 0

*Oct 9 04:16:37.963: %IOSXE-7-PLATFORM: 1 process wcm: 0021.6a89.51ca WCDB_ADD: Radio IIFID 0x6025800000000e, BSSID IIF Id 0x498f800000001b, COS 4

*Oct 9 04:16:37.963: %IOSXE-7-PLATFORM: 1 process wcm: Load Balancer: Success, Resource allocated are: Active Switch number: 1, Active Asic number : 0, Reserve Switch number 2 Reserve Asic number 0. AP Asic num 0

*Oct 9 04:16:37.963: %IOSXE-7-PLATFORM: 1 process wcm: 0021.6a89.51ca WCDB_ADD: Anchor Sw 1, Doppler 0

*Oct 9 04:16:37.963: %IOSXE-7-PLATFORM: 1 process wcm: 0021.6a89.51ca WCDB_ALLOCATE: Client IIF Id alloc SUCCESS w/ client 58b5800000001c (state 0).

*Oct 9 04:16:37.963: %IOSXE-7-PLATFORM: 1 process wcm: 0021.6a89.51ca iifid Clearing Ack flag

*Oct 9 04:16:37.963: %IOSXE-7-PLATFORM: 1 process wcm: 0021.6a89.51ca WCDB_ADD: Platform ID allocated successfully ID:10

*Oct 9 04:16:37.963: %IOSXE-7-PLATFORM: 1 process wcm: 0021.6a89.51ca WCDB_ADD: Adding opt82 len 0

*Oct 9 04:16:37.963: %IOSXE-7-PLATFORM: 1 process wcm: 0021.6a89.51ca WCDB_ADD: Cleaering Ack flag

*Oct 9 04:16:37.963: %IOSXE-7-PLATFORM: 1 process wcm: 0021.6a89.51ca WCDB_ADD: ssid Webauth bssid c8f9.f983.4260 vlan 20 auth=ASSOCIATION(0) wlan(ap-group/global) 9/9 client 0 assoc 1 mob=Unassoc(0) radio 1 m_vlan 20 ip 0.0.0.0 src 0x45e7800000000c dst 0x0 cid 0x58b5800000001c glob rsc id 10dhcpsrv 0.0.0.0

*Oct 9 04:16:37.963: %IOSXE-7-PLATFORM: 1 process wcm: 0021.6a89.51ca WCDB_ADD: mscb iifid 0x58b5800000001c msinfo iifid 0x0

*Oct 9 04:16:37.963: %IOSXE-7-PLATFORM: 1 process wcm: 0021.6a89.51ca 0.0.0.0 START (0) Initializing policy

*Oct 9 04:16:37.963: %IOSXE-7-PLATFORM: 1 process wcm: 0021.6a89.51ca Change state to AUTHCHECK (2) last state START (0)

***Oct 9 04:16:37.963: %IOSXE-7-PLATFORM: 1 process wcm: 0021.6a89.51ca Change state to L2AUTHCOMPLETE (4) last state AUTHCHECK (2)**

*Oct 9 04:16:37.963: %IOSXE-7-PLATFORM: 1 process wcm: 0021.6a89.51ca WCDB_CHANGE: Client 1 m_vlan 20 Radio iif id 0x6025800000000e bssid iif id 0x498f800000001b, bssid c8f9.f983.4260

*Oct 9 04:16:37.963: %IOSXE-7-PLATFORM: 1 process wcm: 0021.6a89.51ca WCDB_AUTH: Adding opt82 len 0

*Oct 9 04:16:37.963: %IOSXE-7-PLATFORM: 1 process wcm: WCDB_IIF: Ack Message ID: 0x58b5800000001c code 1001

*Oct 9 04:16:37.963: %IOSXE-7-PLATFORM: 1 process wcm: 0021.6a89.51ca WCDB_LLM: NoRun Prev Mob 0, Curr Mob 0 llmReq 1, return False

*Oct 9 04:16:37.963: %IOSXE-7-PLATFORM: 1 process wcm: 0021.6a89.51ca auth state 1 mob state 0 setWme 0 wme 1 roam_sent 0

*Oct 9 04:16:37.964: %IOSXE-7-PLATFORM: 1 process wcm: 0021.6a89.51ca WCDB_CHANGE: auth=L2_AUTH(1) vlan 20 radio 1 client_id 0x58b5800000001c mobility=Unassoc(0) src_int 0x45e7800000000c dst_int 0x0 ackflag 0 reassoc_client 0 llm_notif 0 ip 0.0.0.0 ip_learn_type 0

*Oct 9 04:16:37.964: %IOSXE-7-PLATFORM: 1 process wcm: 0021.6a89.51ca WCDB_CHANGE: In L2 auth but l2ack waiting lfag not set,so set

*Oct 9 04:16:37.964: %IOSXE-7-PLATFORM: 1 process wcm: 0021.6a89.51ca 0.0.0.0 L2AUTHCOMPLETE (4) DHCP Not required on AP c8f9.f983.4260 vapId 9 apVapId 9for this client

*Oct 9 04:16:37.964: %IOSXE-7-PLATFORM: 1 process wcm: 0021.6a89.51ca Not Using WMM Compliance code qosCap 00

*Oct 9 04:16:37.964: %IOSXE-7-PLATFORM: 1 process wcm: 0021.6a89.51ca 0.0.0.0

L2AUTHCOMPLETE (4) Plumbed mobile LWAPP rule on AP c8f9.f983.4260 vapId 9
apVapId 9
*Oct 9 04:16:37.964: %IOSXE-7-PLATFORM: 1 process wcm: 0021.6a89.51ca Change state
to DHCP_REQD (7) last state L2AUTHCOMPLETE (4)
*Oct 9 04:16:37.964: %IOSXE-7-PLATFORM: 1 process wcm: 0021.6a89.51ca
WCDB_CHANGE: Client 1 m_vlan 20 Radio iif id 0x602580000000e bssid iif id
0x498f800000001b, bssid c8f9.f983.4260
*Oct 9 04:16:37.964: %IOSXE-7-PLATFORM: 1 process wcm: 0021.6a89.51ca WCDB_AUTH:
Adding opt82 len 0
*Oct 9 04:16:37.964: %IOSXE-7-PLATFORM: 1 process wcm: 0021.6a89.51ca WCDB_CHANGE:
Suppressing SPI (Mobility state not known) pemstate 7 state LEARN_IP(2) vlan
20 client_id 0x58b5800000001c mob=Unassoc(0) ackflag 1 dropd 0
*Oct 9 04:16:37.964: %IOSXE-7-PLATFORM: 1 process wcm: 0021.6a89.51ca Incrementing
the Reassociation Count 1 for client (of interface VLAN0020)
*Oct 9 04:16:37.964: %IOSXE-7-PLATFORM: 1 process wcm: 0021.6a89.51ca
apfPemAddUser2 (apf_policy.c:161) Changing state for mobile 0021.6a89.51ca on AP
c8f9.f983.4260 from Idle to Associated
*Oct 9 04:16:37.964: %IOSXE-7-PLATFORM: 1 process wcm: 0021.6a89.51ca
Reason code 0, Preset 4, AAA cause 1
*Oct 9 04:16:37.964: %IOSXE-7-PLATFORM: 1 process wcm: 0021.6a89.51ca Scheduling
deletion of Mobile Station: (callerId: 49) in 1800 seconds
*Oct 9 04:16:37.964: %IOSXE-7-PLATFORM: 1 process wcm: 0021.6a89.51ca Ms Timeout =
1800, Session Timeout = 1800
*Oct 9 04:16:37.964: %IOSXE-7-PLATFORM: 1 process wcm: Sending assoc-resp station:
0021.6a89.51ca AP: c8f9.f983.4260 -01 thread:-114119824
*Oct 9 04:16:37.964: %IOSXE-7-PLATFORM: 1 process wcm: 0021.6a89.51ca Sending Assoc
Response to station on BSSID c8f9.f983.4260 (status 0) ApVapId 9 Slot 1
*Oct 9 04:16:37.964: %IOSXE-7-PLATFORM: 1 process wcm: 0021.6a89.51ca
apfProcessAssocReq (apf_80211.c:6224) Changing state for mobile 0021.6a89.51ca
on AP c8f9.f983.4260 from Associated to Associated
*Oct 9 04:16:37.964: %IOSXE-7-PLATFORM: 1 process wcm: 0021.6a89.51ca 0.0.0.0
DHCP_REQD (7) pemAdvanceState2: MOBILITY-INCOMPLETE with state 7.
*Oct 9 04:16:37.964: %IOSXE-7-PLATFORM: 1 process wcm: 0021.6a89.51ca 0.0.0.0
DHCP_REQD (7) pemAdvanceState2: MOBILITY-INCOMPLETE with state 7.
*Oct 9 04:16:37.965: %IOSXE-7-PLATFORM: 1 process wcm: 0021.6a89.51ca 0.0.0.0
DHCP_REQD (7) pemAdvanceState2: MOBILITY-COMPLETE with state 7.
*Oct 9 04:16:37.965: %IOSXE-7-PLATFORM: 1 process wcm: 0021.6a89.51ca 0.0.0.0
DHCP_REQD (7) State Update from Mobility-Incomplete to Mobility-Complete, mobility
role=Local, client state=APF_MS_STATE_ASSOCIATED
*Oct 9 04:16:37.965: %IOSXE-7-PLATFORM: 1 process wcm: 0021.6a89.51ca 0.0.0.0
DHCP_REQD (7) pemAdvanceState2 3649, Adding TMP rule
*Oct 9 04:16:37.965: %IOSXE-7-PLATFORM: 1 process wcm: 0021.6a89.51ca 0.0.0.0
DHCP_REQD (7) Adding Fast Path rule^M on AP c8f9.f983.4260 , slot 1 802.1P = 0^M
*Oct 9 04:16:37.965: %IOSXE-7-PLATFORM: 1 process wcm: 0021.6a89.51ca 0.0.0.0
DHCP_REQD (7) Successfully plumbed mobile rule
***Oct 9 04:16:37.965: %IOSXE-7-PLATFORM: 1 process wcm: 0021.6a89.51ca**
WEBAUTH: Using method list Local_webauth
***Oct 9 04:16:37.965: %IOSXE-7-PLATFORM: 1 process wcm: 0021.6a89.51ca**
WEBAUTH: Using webAuth profile name web
*Oct 9 04:16:37.965: %IOSXE-7-PLATFORM: 1 process wcm: 0021.6a89.51ca WEBAUTH:
Using webAuth Max Logins 3
*Oct 9 04:16:37.965: %IOSXE-7-PLATFORM: 1 process wcm: 0021.6a89.51ca WEBAUTH:
Calling Auth Mgr to authenticate client 58b5800000001c
*Oct 9 04:16:37.965: %IOSXE-7-PLATFORM: 1 process wcm: 0021.6a89.51ca WEBAUTH:
apfMsWebAuthInitiated is not true. So not updating SM
*Oct 9 04:16:37.965: %IOSXE-7-PLATFORM: 1 process wcm: 0021.6a89.51ca WEBAUTH:
At the End of webAuthClientAuthNotify mscb->apfMsOldSmwtp_iif_id = 0
*Oct 9 04:16:37.965: %IOSXE-7-PLATFORM: 1 process wcm: 0021.6a89.51ca
WCDB_CHANGE: Client 1 m_vlan 20 Radio iif id 0x602580000000e bssid iif id
0x498f800000001b, bssid c8f9.f983.4260
*Oct 9 04:16:37.965: %IOSXE-7-PLATFORM: 1 process wcm: 0021.6a89.51ca WCDB_AUTH:
Adding opt82 len 0
*Oct 9 04:16:37.965: %IOSXE-7-PLATFORM: 1 process wcm: 0021.6a89.51ca WCDB_LLM:
NoRun Prev Mob 0, Curr Mob 1 llmReq 1, return False

*Oct 9 04:16:37.965: %IOSXE-7-PLATFORM: 1 process wcm: 0021.6a89.51ca
WCDB_CHANGE: Suppressing SPI (ACK message not recvd) pemstate 7 state LEARN_IP(2)
vlan 20 client_id 0x58b5800000001c mob=Local(1) ackflag 1 dropd 1
*Oct 9 04:16:37.965: %IOSXE-7-PLATFORM: 1 process wcm: 0021.6a89.51ca Error
updating wcdb on mobility complete
*Oct 9 04:16:37.965: %IOSXE-7-PLATFORM: 1 process wcm: PEM recv processing
msg Epm spi response(12)
*Oct 9 04:16:37.965: %IOSXE-7-PLATFORM: 1 process wcm: 0021.6a89.51ca aaa
attribute list length is 79
*Oct 9 04:16:37.965: %IOSXE-7-PLATFORM: 1 process wcm: 0021.6a89.51ca
Sending SPI spi_epm_epm_session_create successfull
*Oct 9 04:16:37.965: %IOSXE-7-PLATFORM: 1 process wcm: PEM recv processing msg
Add SCB(3)
*Oct 9 04:16:37.965: %IOSXE-7-PLATFORM: 1 process wcm: 0021.6a89.51ca 0.0.0.0,
auth_state 7 mmRole Local !!!
*Oct 9 04:16:37.965: %IOSXE-7-PLATFORM: 1 process wcm: 0021.6a89.51ca 0.0.0.0,
auth_state 7 mmRole Local, updating wcdb not needed
*Oct 9 04:16:37.965: %IOSXE-7-PLATFORM: 1 process wcm: 0021.6a89.51ca Tclas
Plumb needed: 0
*Oct 9 04:16:37.966: %IOSXE-7-PLATFORM: 1 process wcm: 0021.6a89.51ca WCDB
SPI response msg handler client code 0 mob state 0
*Oct 9 04:16:37.966: %IOSXE-7-PLATFORM: 1 process wcm: 0021.6a89.51ca
WcdbClientUpdate: L2 Auth ACK from WCDB
*Oct 9 04:16:37.966: %IOSXE-7-PLATFORM: 1 process wcm: 0021.6a89.51ca
WCDB_L2ACK: wcdbAckRecvdFlag updated
*Oct 9 04:16:37.966: %IOSXE-7-PLATFORM: 1 process wcm: 0021.6a89.51ca
WCDB_CHANGE: Client 1 m_vlan 20 Radio iif id 0x6025800000000e bssid iif id
0x498f8000000001b, bssid c8f9.f983.4260
*Oct 9 04:16:37.966: %IOSXE-7-PLATFORM: 1 process wcm: 0021.6a89.51ca
WCDB_AUTH: Adding opt82 len 0
*Oct 9 04:16:37.966: %IOSXE-7-PLATFORM: 1 process wcm: 0021.6a89.51ca
WCDB_LLM: NoRun Prev Mob 0, Curr Mob 1 llmReq 1, return False
*Oct 9 04:16:37.966: %IOSXE-7-PLATFORM: 1 process wcm: 0021.6a89.51ca
auth state 2 mob state 1 setWme 0 wme 1 roam_sent 0
*Oct 9 04:16:37.966: %IOSXE-7-PLATFORM: 1 process wcm: 0021.6a89.51ca
WCDB_CHANGE: auth=LEARN_IP(2) vlan 20 radio 1 client_id 0x58b5800000001c
mobility=Local(1) src_int 0x45e78000000000c dst_int 0x0 ackflag 2
reassoc_client 0 llm_notif 0 ip 0.0.0.0 ip_learn_type 0
*Oct 9 04:16:37.967: %IOSXE-7-PLATFORM: 1 process wcm: EPM: Session
create resp - client handle 58b5800000001c session 10000015
*Oct 9 04:16:37.967: %IOSXE-7-PLATFORM: 1 process wcm: EPM: Netflow
session create
resp - client handle 58b5800000001c sess 10000015
*Oct 9 04:16:37.967: %IOSXE-7-PLATFORM: 1 process wcm: PEM recv processing
msg Epm spi response(12)
*Oct 9 04:16:37.967: %IOSXE-7-PLATFORM: 1 process wcm: 0021.6a89.51ca Received
session_create_response for client handle 24969359310979100
*Oct 9 04:16:37.967: %IOSXE-7-PLATFORM: 1 process wcm: 0021.6a89.51ca Received
session_create_response with EPM session handle 268435477
*Oct 9 04:16:37.967: %IOSXE-7-PLATFORM: 1 process wcm: 0021.6a89.51ca Web-Auth
client, checking if pre-auth policies are needed to be plumbed
*Oct 9 04:16:37.967: %IOSXE-7-PLATFORM: 1 process wcm: 0021.6a89.51ca Trying to
create a preauth policy for the client
*Oct 9 04:16:37.967: %IOSXE-7-PLATFORM: 1 process wcm: 0021.6a89.51ca Send
request to EPM
*Oct 9 04:16:37.967: %IOSXE-7-PLATFORM: 1 process wcm: 0021.6a89.51ca aaa
attribute list length is 34
*Oct 9 04:16:37.967: %IOSXE-7-PLATFORM: 1 process wcm: 0021.6a89.51ca Sending
Activate request for session handle 268435477 successful
*Oct 9 04:16:37.967: %IOSXE-7-PLATFORM: 1 process wcm: 0021.6a89.51ca Pre-auth
policy request sent! Now wait for pre-auth policy ACK from EPM
*Oct 9 04:16:37.967: %IOSXE-7-PLATFORM: 1 process wcm: 0021.6a89.51ca Setting
the epmSendAclDone flag.
*Oct 9 04:16:37.968: %IOSXE-7-PLATFORM: 1 process wcm: EPM: Init feature,

client handle 58b580000001c session 10000015 authz 1f000015
*Oct 9 04:16:37.968: %IOSXE-7-PLATFORM: 1 process wcm: EPM: Activate feature
client handle 58b580000001c sess 10000015 authz 1f000015
*Oct 9 04:16:37.968: %IOSXE-7-PLATFORM: 1 process wcm: PEM recv processing msg
Epm spi response(12)
*Oct 9 04:16:37.968: %IOSXE-7-PLATFORM: 1 process wcm: 0021.6a89.51ca Received
activate_features_resp for client handle 24969359310979100
*Oct 9 04:16:37.968: %IOSXE-7-PLATFORM: 1 process wcm: 0021.6a89.51ca Received
activate_features_resp for EPM session handle 268435477
***Oct 9 04:16:38.019: %IOSXE-7-PLATFORM: 1 process wcm: 0021.6a89.51ca WCDB_IP_BIND:
w/ IPv4 20.20.20.6 ip_learn_type DHCP add_delete 1,options_length 0**
*Oct 9 04:16:38.019: %IOSXE-7-PLATFORM: 1 process wcm: 0021.6a89.51ca
WcdbClientUpdate: IP Binding from WCDB ip_learn_type 1, add_or_delete 1
*Oct 9 04:16:38.019: %IOSXE-7-PLATFORM: 1 process wcm: 0021.6a89.51ca IPv4 Addr:
20:20:20:6
*Oct 9 04:16:38.019: %IOSXE-7-PLATFORM: 1 process wcm: 0021.6a89.51ca MS got
the IP, resetting the Reassociation Count 0 for client
*Oct 9 04:16:38.019: %IOSXE-7-PLATFORM: 1 process wcm: 0021.6a89.51ca Change state
to WEBAUTH_REQD (8) last state DHCP_REQD (7)
*Oct 9 04:16:38.019: %IOSXE-7-PLATFORM: 1 process wcm: 0021.6a89.51ca WCDB_CHANGE:
Client 1 m_vlan 20 Radio iif id 0x6025800000000e bssid iif id 0x498f800000001b,
bssid c8f9.f983.4260
*Oct 9 04:16:38.019: %IOSXE-7-PLATFORM: 1 process wcm: 0021.6a89.51ca WCDB_AUTH:
Adding opt82 len 0
*Oct 9 04:16:38.019: %IOSXE-7-PLATFORM: 1 process wcm: 0021.6a89.51ca WCDB_LLM:
NoRun Prev Mob 1, Curr Mob 1 llmReq 5, return False
*Oct 9 04:16:38.019: %IOSXE-7-PLATFORM: 1 process wcm: 0021.6a89.51ca auth state 3
mob state 1 setWme 0 wme 1 roam_sent 0
*Oct 9 04:16:38.019: %IOSXE-7-PLATFORM: 1 process wcm: 0021.6a89.51ca WCDB_CHANGE:
auth=L3_AUTH(3) vlan 20 radio 1 client_id 0x58b5800000001c mobility=Local(1) src_int
0x45e7800000000c dst_int 0x0 ackflag 2 reassoc_client 0 llm_notif 0 ip 20.20.20.6
ip_learn_type DHCP
***Oct 9 04:16:38.019: %IOSXE-7-PLATFORM: 1 process wcm: 0021.6a89.51ca WEBAUTH:
Using method list Local webauth**
***Oct 9 04:16:38.019: %IOSXE-7-PLATFORM: 1 process wcm: 0021.6a89.51ca WEBAUTH:
Using webAuth profile name web**
*Oct 9 04:16:38.019: %IOSXE-7-PLATFORM: 1 process wcm: 0021.6a89.51ca WEBAUTH:
Using webAuth Max Logins 3
*Oct 9 04:16:38.019: %IOSXE-7-PLATFORM: 1 process wcm: 0021.6a89.51ca WEBAUTH:
Calling Auth Mgr to authenticate client 58b5800000001c
*Oct 9 04:16:38.019: %IOSXE-7-PLATFORM: 1 process wcm: 0021.6a89.51ca WEBAUTH:
Called SM start with apfMswtp_iif_id 45e7800000000c, mscb->apfMswtp_iif_id
58b5800000001c
*Oct 9 04:16:38.019: %IOSXE-7-PLATFORM: 1 process wcm: 0021.6a89.51ca WEBAUTH:
At the End of webAuthClientAuthNotify mscb->apfMsOldSmtwp_iif_id = 45e7800000000c
*Oct 9 04:16:38.019: %IOSXE-7-PLATFORM: 1 process wcm: 0021.6a89.51ca 20.20.20.6
WEBAUTH_REQD (8) pemAdvanceState2 4382, Adding TMP rule
*Oct 9 04:16:38.019: %IOSXE-7-PLATFORM: 1 process wcm: 0021.6a89.51ca 20.20.20.6
WEBAUTH_REQD (8) Replacing Fast Path rule^M on AP c8f9.f983.4260 , slot 1
802.1P = 0^M
***Oct 9 04:16:38.019: %IOSXE-7-PLATFORM: 1 process wcm: 0021.6a89.51ca 20.20.20.6
WEBAUTH_REQD (8) Successfully plumbed mobile rule**
*Oct 9 04:16:38.019: %IOSXE-7-PLATFORM: 1 process wcm: 0021.6a89.51ca Plumbing
web-auth redirect rule due to user logout
*Oct 9 04:16:38.019: %IOSXE-7-PLATFORM: 1 process wcm: 0021.6a89.51ca Sending
IPv4 update to Controller 10.105.135.178
*Oct 9 04:16:38.019: %IOSXE-7-PLATFORM: 1 process wcm: 0021.6a89.51ca Assigning
Address 20.20.20.6 to mobile
*Oct 9 04:16:38.020: %IOSXE-7-PLATFORM: 1 process wcm: PEM recv processing msg
Add SCB(3)
*Oct 9 04:16:38.020: %IOSXE-7-PLATFORM: 1 process wcm: 0021.6a89.51ca
20.20.20.6, auth_state 8 mmRole Local !!!
*Oct 9 04:16:38.020: %IOSXE-7-PLATFORM: 1 process wcm: 0021.6a89.51ca
20.20.20.6, auth_state 8 mmRole Local, updating wcdb not needed

*Oct 9 04:16:38.020: %IOSXE-7-PLATFORM: 1 process wcm: 0021.6a89.51ca Tclas
Plumb needed: 0

*Oct 9 04:16:38.020: AUTH-EVENT: [0021.6a89.51ca, Ca1] Received session event
'SESSION_START' from client

*Oct 9 04:16:38.020: AUTH-EVENT: [0021.6a89.51ca, Ca1] Session start for
0021.6a89.51ca

*Oct 9 04:16:38.020: AUTH-EVENT: [0021.6a89.51ca, Ca1] Using stored AAA ID
0x00000015

*Oct 9 04:16:38.020: AUTH-EVENT: [0021.6a89.51ca, Ca1] Retrieved Client IIF ID
58B5800000001C

*Oct 9 04:16:38.020: AUTH-EVENT: [0021.6a89.51ca, Ca1] Allocated new Auth
Manager context
(handle 0x10000016)

*Oct 9 04:16:38.020: AUTH-DETAIL: [0021.6a89.51ca, Ca1] Client 0021.6a89.51ca,
Initialising Method state to 'Not run'

*Oct 9 04:16:38.020: AUTH-DETAIL: [0021.6a89.51ca, Ca1] Adding method Session
Mgr IPDT Shim to runnable list for session 0x10000016

*Oct 9 04:16:38.020: AUTH-DETAIL: [0021.6a89.51ca, Ca1] Client 0021.6a89.51ca,
Initialising Method SVM state to 'Not run'

*Oct 9 04:16:38.020: AUTH-DETAIL: [0021.6a89.51ca, Ca1] Adding method SVM to
runnable list for session 0x10000016

*Oct 9 04:16:38.020: AUTH-DETAIL: [0021.6a89.51ca, Ca1] Client 0021.6a89.51ca,
Initialising Method state to 'Not run'

*Oct 9 04:16:38.020: AUTH-DETAIL: [0021.6a89.51ca, Ca1] Adding method Switch
PI to runnable list for session 0x10000016

*Oct 9 04:16:38.020: AUTH-DETAIL: [0021.6a89.51ca, Ca1] Client 0021.6a89.51ca,
Initialising Method state to 'Not run'

*Oct 9 04:16:38.020: AUTH-DETAIL: [0021.6a89.51ca, Ca1] Adding method Session
Mgr SISF Shim to runnable list for session 0x10000016

*Oct 9 04:16:38.020: AUTH-DETAIL: [0021.6a89.51ca, Ca1] Client 0021.6a89.51ca,
Initialising Method iaf state to 'Not run'

*Oct 9 04:16:38.020: AUTH-DETAIL: [0021.6a89.51ca, Ca1] Adding method iaf to
runnable list for session 0x10000016

*Oct 9 04:16:38.020: AUTH-DETAIL: [0021.6a89.51ca, Ca1] Client 0021.6a89.51ca,
Initialising Method Tag state to 'Not run'

*Oct 9 04:16:38.020: AUTH-DETAIL: [0021.6a89.51ca, Ca1] Adding method Tag to
runnable list for session 0x10000016

*Oct 9 04:16:38.020: AUTH-DETAIL: [0021.6a89.51ca, Ca1] Client 0021.6a89.51ca,
Initialising Method dct state to 'Not run'

*Oct 9 04:16:38.020: AUTH-DETAIL: [0021.6a89.51ca, Ca1] Adding method dct to
runnable list for session 0x10000016

*Oct 9 04:16:38.020: AUTH-DETAIL: [0021.6a89.51ca, Ca1] Client 0021.6a89.51ca,
Initialising Method SM Reauth Plugin state to 'Not run'

*Oct 9 04:16:38.020: AUTH-DETAIL: [0021.6a89.51ca, Ca1] Adding method SM
Reauth Plugin to runnable list for session 0x10000016

*Oct 9 04:16:38.020: AUTH-DETAIL: [0021.6a89.51ca, Ca1] Client 0021.6a89.51ca,
Initialising Method SM Accounting Feature state to 'Not run'

*Oct 9 04:16:38.020: AUTH-DETAIL: [0021.6a89.51ca, Ca1] Adding method SM
Accounting Feature to runnable list for session 0x10000016

*Oct 9 04:16:38.020: AUTH-DETAIL: [0021.6a89.51ca, Ca1] Client 0021.6a89.51ca,
Initialising Method state to 'Not run'

*Oct 9 04:16:38.020: AUTH-DETAIL: [0021.6a89.51ca, Ca1] Adding method Session
Mgr FFCP Shim to runnable list for session 0x10000016

*Oct 9 04:16:38.020: AUTH-DETAIL: [0021.6a89.51ca, Ca1] Client 0021.6a89.51ca,
Initialising Method state to 'Not run'

*Oct 9 04:16:38.020: AUTH-DETAIL: [0021.6a89.51ca, Ca1] Adding method AIM to
runnable list for session 0x10000016

*Oct 9 04:16:38.020: AUTH-DETAIL: [0021.6a89.51ca, Ca1] Client 0021.6a89.51ca,
Initialising Method dotlx state to 'Not run'

*Oct 9 04:16:38.020: AUTH-DETAIL: [0021.6a89.51ca, Ca1] Adding method dotlx to
runnable list for session 0x10000016

*Oct 9 04:16:38.020: AUTH-DETAIL: [0021.6a89.51ca, Ca1] Client 0021.6a89.51ca,
Initialising Method mab state to 'Not run'

*Oct 9 04:16:38.020: AUTH-DETAIL: [0021.6a89.51ca, Ca1] Adding method mab to

runnable list for session 0x10000016

```
*Oct 9 04:16:38.020: AUTH-DETAIL: [0021.6a89.51ca, Ca1] Client 0021.6a89.51ca,
Initialising Method webauth state to 'Not run'
*Oct 9 04:16:38.020: AUTH-DETAIL: [0021.6a89.51ca, Ca1] Adding method webauth
to runnable list for session 0x10000016
*Oct 9 04:16:38.020: AUTH-EVENT: [0021.6a89.51ca, Ca1] Processing SM CB request
for 0x10000016: Event: New client notification (201)
*Oct 9 04:16:38.020: AUTH-DETAIL: [0021.6a89.51ca, Ca1] Create attr list,
session 0x10000016:
*Oct 9 04:16:38.020: AUTH-DETAIL: [0021.6a89.51ca, Ca1] - adding MAC
0021.6a89.51ca
*Oct 9 04:16:38.020: AUTH-DETAIL: [0021.6a89.51ca, Ca1] - adding Swidb
0x9745F750
*Oct 9 04:16:38.020: AUTH-DETAIL: [0021.6a89.51ca, Ca1] - adding AAA_ID=15
*Oct 9 04:16:38.020: AUTH-DETAIL: [0021.6a89.51ca, Ca1] - adding Audit_sid=
0a6987b25254d8a500000015
*Oct 9 04:16:38.020: AUTH-DETAIL: [0021.6a89.51ca, Ca1] - adding IIF ID=
0x58B5800000001C
*Oct 9 04:16:38.020: AUTH-EVENT: [0021.6a89.51ca, Ca1] New client 0021.6a89.51ca -
client handle 0x00000001 for SVM
*Oct 9 04:16:38.020: AUTH-EVENT: [0021.6a89.51ca, Ca1] Added record to DB - hdl
0x10000016 / 0021.6a89.51ca. 1 session(s) on IDB
*Oct 9 04:16:38.020: AUTH-DETAIL: [0021.6a89.51ca, Ca1] Add record - adding MAC
0021.6a89.51ca
*Oct 9 04:16:38.020: AUTH-DETAIL: [0021.6a89.51ca, Ca1] Add record - adding
SWIDB Capwap1
*Oct 9 04:16:38.020: AUTH-DETAIL: [0021.6a89.51ca, Ca1] Add record - adding
AAA-ID 15
*Oct 9 04:16:38.020: AUTH-DETAIL: [0021.6a89.51ca, Ca1] Add record - adding
AUDIT-ID 0a6987b25254d8a500000015
*Oct 9 04:16:38.021: AUTH-DETAIL: [0021.6a89.51ca, Ca1] Add record - adding
IIF-ID 0x58B5800000001C
*Oct 9 04:16:38.021: AUTH-DETAIL: [0021.6a89.51ca, Ca1] Add record - adding
TARGET_SCOPE (Client)
*Oct 9 04:16:38.021: AUTH-EVENT: [0021.6a89.51ca, Ca1] No policy handle to
bind session
*Oct 9 04:16:38.021: AUTH-DETAIL: [0021.6a89.51ca, Ca1] Create attr list, session
0x10000016:
*Oct 9 04:16:38.021: AUTH-DETAIL: [0021.6a89.51ca, Ca1] - adding MAC 0021.6a89.51ca
*Oct 9 04:16:38.021: AUTH-DETAIL: [0021.6a89.51ca, Ca1] - adding Swidb 0x9745F750
*Oct 9 04:16:38.021: AUTH-DETAIL: [0021.6a89.51ca, Ca1] - adding AAA_ID=15
*Oct 9 04:16:38.021: AUTH-DETAIL: [0021.6a89.51ca, Ca1] - adding Audit_sid=
0a6987b25254d8a500000015
*Oct 9 04:16:38.021: AUTH-DETAIL: [0021.6a89.51ca, Ca1] - adding IIF ID=
0x58B5800000001C
*Oct 9 04:16:38.021: AUTH-EVENT: [0021.6a89.51ca, Ca1] Processing SM CB request for
0x10000016: Event: Start a method (200)
*Oct 9 04:16:38.021: WA-SM : Ca1 [0.0.0.0 ] Start CB, info hdl
00000000 [0x0], SM hdl 10000016, flags 0x0
*Oct 9 04:16:38.021: WA-SM : Ca1 [0.0.0.0 ] Start CB, Rcvd ID
attrs mac 0021.6a89.51ca, IIF 58B5800000001C , audit-ID 0a6987b25254d8a500000015
*Oct 9 04:16:38.021: WA-SM : Ca1 Creating idb subblock (1)
*Oct 9 04:16:38.021: WA-SESSN: [0.0.0.0 ] Create session, hdl
3D00000B [0x96FD5A50]
*Oct 9 04:16:38.021: WA-STATE: [0.0.0.0 ] State Invalid
State -> INIT
*Oct 9 04:16:38.021: WA-SESSN: Ca1 [0.0.0.0 ] Create session, Add
address 0.0.0.0 [0021.6a89.51ca]
*Oct 9 04:16:38.021: WA-STATE: Ca1 [0.0.0.0 ] State INIT -> INIT
*Oct 9 04:16:38.021: WA-TIMER: Ca1 [0.0.0.0 ] State timer start
(120 secs)
*Oct 9 04:16:38.021: WA-SM : Ca1 [0.0.0.0 ] Initiate session,
SM initd sessions 1
*Oct 9 04:16:38.021: WA-STATE: Ca1 [0.0.0.0 ] State INIT -> INIT
```

*Oct 9 04:16:38.021: WA-TIMER: Ca1 [0.0.0.0] State timer restart (120 secs)

*Oct 9 04:16:38.021: WA-ACL : Ca1 [0.0.0.0] Add IPv4 intecept ACL via FFM, name "IP-Adm-V4-Int-ACL-global", pri 50, IIF 58B5800000001C

*Oct 9 04:16:38.021: WA-ACL : Ca1 [0.0.0.0] Add IPv6 intercept ACL via FFM, name "IP-Adm-V6-Int-ACL-global", pri 52, IIF 58B5800000001C

*Oct 9 04:16:38.021: AUTH-EVENT: [0021.6a89.51ca, Ca1] Client 0021.6a89.51ca, Context changing state from 'Idle' to 'Running'

*Oct 9 04:16:38.021: AUTH-EVENT: [0021.6a89.51ca, Ca1] Client 0021.6a89.51ca, Method webauth changing state from 'Not run' to 'Running'

*Oct 9 04:16:38.021: AUTH-EVENT: [0021.6a89.51ca, Ca1] Received internal event SINGLE_ID_UPDATE (handle 0x10000016)

*Oct 9 04:16:38.021: WA-SM : Ca1 [0.0.0.0] Change notif CB, ADD, info hdl 3D00000B, SM hdl 10000016

*Oct 9 04:16:38.021: WA-SM : Ca1 [20.20.20.6] Change notif CB, Add IPv4 address

*Oct 9 04:16:38.021: WA-SESSN: Ca1 [20.20.20.6] Change notif CB, Add address 20.20.20.6 [0021.6a89.51ca]

*Oct 9 04:16:38.021: WA-SESSN: Ca1 [20.20.20.6] Adding ARP Table entry [Notify CB] Vlan20 20.20.20.6 0021.6a89.51ca

*Oct 9 04:16:38.021: AUTH-SYNC: [0021.6a89.51ca, Ca1] Delay add sync of addr for 0021.6a89.51ca / 0x10000016

*Oct 9 04:16:38.021: AUTH-EVENT: Handling client event SESSION_STARTED (8) for PRE, handle 0x10000016

*Oct 9 04:16:38.021: AUTH-EVENT: [0021.6a89.51ca, Ca1] SM will not apply policy for SESSION_STARTED on 0x10000016 / 0021.6a89.51ca

*Oct 9 04:16:38.021: AUTH-EVENT: [0021.6a89.51ca, Ca1] Processing default action(s) for event SESSION_STARTED for session 0x10000016.

*Oct 9 04:16:38.021: AUTH-DETAIL: No default action(s) for event SESSION_STARTED.

*Oct 9 04:16:38.472: AUTH-EVENT: Raising ext evt Template Activated (8) on session 0x10000015, client (unknown) (0), hdl 0x00000000, attr_list 0x41000336

*Oct 9 04:16:38.472: AUTH-EVENT: SM will not send event Template Activated to PRE for 0x10000015

*Oct 9 04:16:38.472: %IOSXE-7-PLATFORM: 1 process wcm: EPM: Policy enforcement - client handle 58b5800000001c session 7600000b authz 1f000015

*Oct 9 04:16:38.472: %IOSXE-7-PLATFORM: 1 process wcm: EPM: Netflow policy enforcement - client handle 58b5800000001c sess 7600000b authz 1f000015 msg_type 0 policy_status 0 attr len 0

*Oct 9 04:16:38.472: %IOSXE-7-PLATFORM: 1 process wcm: PEM recv processing msg Epm spi response(12)

*Oct 9 04:16:38.472: %IOSXE-7-PLATFORM: 1 process wcm: 0021.6a89.51ca Received policy_enforcement_response for client handle 24969359310979100

*Oct 9 04:16:38.472: %IOSXE-7-PLATFORM: 1 process wcm: 0021.6a89.51ca Received policy_enforcement_response for EPM session handle 1979711499

*Oct 9 04:16:38.472: %IOSXE-7-PLATFORM: 1 process wcm: 0021.6a89.51ca Received response for _EPM_SPI_ACTIVATE_FEATURES request sent for client

*Oct 9 04:16:38.472: %IOSXE-7-PLATFORM: 1 process wcm: 0021.6a89.51ca Received _EPM_SPI_STATUS_SUCCESS for request sent for client

*Oct 9 04:16:38.472: %IOSXE-7-PLATFORM: 1 process wcm: 0021.6a89.51ca Pre-auth policy ACK recvd from EPM, unset flag on MSCB

*Oct 9 04:16:51.143: WA-QLFY : Ca1 [20.20.20.6] Ingress qlfy, Session found, ACL in-place, mac [0021.6a89.51ca], intercept

*Oct 9 04:16:51.143: WA-INFT : Ca1 [20.20.20.6] 50164 TCP SYN [1], dport 80, INIT state

*Oct 9 04:16:51.147: WA-QLFY : Ca1 [20.20.20.6] Ingress qlfy, Session found, ACL in-place, mac [0021.6a89.51ca], intercept

*Oct 9 04:16:51.147: WA-HTTPD: Ca1 [20.20.20.6] 50164/0 HTTP Intercept, New fd 0, sport [50164], info hdl [0x3D00000B], mac [0021.6a89.51ca]

*Oct 9 04:16:51.147: WA-HTTPD: Ca1 [20.20.20.6] 50164/0 Create IO ctx, id [6B00002B], pid 208

*Oct 9 04:16:51.147: WA-CLNT : Ca1 [20.20.20.6] 50164 Client conn add [0021.6a89.51ca] ioctx [6B00002B] #1 pid 208

*Oct 9 04:16:51.147: WA-IO : Ca1 [20.20.20.6] 50164/0 IO state

NEW -> READING

```
*Oct 9 04:16:51.147: WA-IO : Cal [20.20.20.6 ] 50164/0 Read event,
read buffer addr 0x97546DF4, length 2048, cursor 0
*Oct 9 04:16:51.147: WA-IO : Cal [20.20.20.6 ] 50164/0 Read event,
Read blocked, cursor 0
*Oct 9 04:16:51.147: WA-QLFY : Cal [20.20.20.6 ] Ingress qlfy,
Session found, ACL in-place, mac [0021.6a89.51ca], intercept
*Oct 9 04:16:51.147: WA-IO : Cal [20.20.20.6 ] 50164/0 Read event,
read buffer addr 0x97546DF4, length 2048, cursor 0
*Oct 9 04:16:51.147: WA-IO : Cal [20.20.20.6 ] 50164/0 Read event,
Read blocked, cursor 416
*Oct 9 04:16:51.147: WA-IO : Cal [20.20.20.6 ] 50164/0 Read event,
Message ready
*Oct 9 04:16:51.147: HTTP: token [STRING] len 3: 'GET'
*Oct 9 04:16:51.147: HTTP: token [SPACE ] len 1: ' '
*Oct 9 04:16:51.147: HTTP: token [OTHER ] len 1: '/'
*Oct 9 04:16:51.147: HTTP: token [STRING] len 8: 'wireless'
*Oct 9 04:16:51.147: HTTP: token [SPACE ] len 1: ' '
*Oct 9 04:16:51.147: HTTP: token [STRING] len 4: 'HTTP'
*Oct 9 04:16:51.147: HTTP: token [OTHER ] len 1: '/'
*Oct 9 04:16:51.148: HTTP: token [STRING] len 1: '1'
*Oct 9 04:16:51.148: HTTP: token [OTHER ] len 1: '.'
*Oct 9 04:16:51.148: HTTP: token [STRING] len 1: '1'
*Oct 9 04:16:51.148: HTTP: token [CRLF ] len 2: '\15\12'
*Oct 9 04:16:51.148: HTTP: token [STRING] len 6: 'Accept'
*Oct 9 04:16:51.148: HTTP: token [OTHER ] len 1: ':'
*Oct 9 04:16:51.148: HTTP: token [SPACE ] len 1: ' '
*Oct 9 04:16:51.148: HTTP: token [STRING] len 5: 'image'
*Oct 9 04:16:51.148: HTTP: token [OTHER ] len 1: '/'
*Oct 9 04:16:51.148: HTTP: token [STRING] len 4: 'jpeg'
*Oct 9 04:16:51.148: HTTP: token [OTHER ] len 1: ','
*Oct 9 04:16:51.148: HTTP: token [SPACE ] len 1: ' '
*Oct 9 04:16:51.148: HTTP: token [STRING] len 11: 'application'
*Oct 9 04:16:51.148: HTTP: token [OTHER ] len 1: '/'
*Oct 9 04:16:51.148: HTTP: token [STRING] len 1: 'x'
*Oct 9 04:16:51.148: HTTP: token [OTHER ] len 1: '-'
*Oct 9 04:16:51.148: HTTP: token [STRING] len 2: 'ms'
*Oct 9 04:16:51.148: HTTP: token [OTHER ] len 1: '-'
*Oct 9 04:16:51.148: HTTP: token [STRING] len 11: 'application'
*Oct 9 04:16:51.148: HTTP: token [OTHER ] len 1: ','
*Oct 9 04:16:51.148: HTTP: token [SPACE ] len 1: ' '
*Oct 9 04:16:51.148: HTTP: token [STRING] len 5: 'image'
*Oct 9 04:16:51.148: HTTP: token [OTHER ] len 1: '/'
*Oct 9 04:16:51.148: HTTP: token [STRING] len 3: 'gif'
*Oct 9 04:16:51.148: HTTP: token [OTHER ] len 1: ','
*Oct 9 04:16:51.148: HTTP: token [SPACE ] len 1: ' '
*Oct 9 04:16:51.148: HTTP: token [STRING] len 11: 'application'
*Oct 9 04:16:51.148: HTTP: token [OTHER ] len 1: '/'
*Oct 9 04:16:51.148: HTTP: token [STRING] len 4: 'xaml'
*Oct 9 04:16:51.148: HTTP: token [OTHER ] len 1: '+'
*Oct 9 04:16:51.148: HTTP: token [STRING] len 3: 'xml'
*Oct 9 04:16:51.148: HTTP: token [OTHER ] len 1: ','
*Oct 9 04:16:51.148: HTTP: token [SPACE ] len 1: ' '
*Oct 9 04:16:51.148: HTTP: token [STRING] len 5: 'image'
*Oct 9 04:16:51.148: HTTP: token [OTHER ] len 1: '/'
*Oct 9 04:16:51.148: HTTP: token [STRING] len 5: 'pjpeg'
*Oct 9 04:16:51.148: HTTP: token [OTHER ] len 1: ','
*Oct 9 04:16:51.148: HTTP: token [SPACE ] len 1: ' '
*Oct 9 04:16:51.148: HTTP: token [STRING] len 11: 'application'
*Oct 9 04:16:51.148: HTTP: token [OTHER ] len 1: '/'
*Oct 9 04:16:51.148: HTTP: token [STRING] len 1: 'x'
*Oct 9 04:16:51.148: HTTP: token [OTHER ] len 1: '-'
*Oct 9 04:16:51.148: HTTP: token [STRING] len 2: 'ms'
*Oct 9 04:16:51.148: HTTP: token [OTHER ] len 1: '-'
```

*Oct 9 04:16:51.148: HTTP: token [STRING] len 4: 'xbap'
*Oct 9 04:16:51.148: HTTP: token [OTHER] len 1: ','
*Oct 9 04:16:51.148: HTTP: token [SPACE] len 1: ' '
Oct 9 04:16:51.148: HTTP: token [OTHER] len 1: ''
*Oct 9 04:16:51.148: HTTP: token [OTHER] len 1: '/'
Oct 9 04:16:51.148: HTTP: token [OTHER] len 1: ''
*Oct 9 04:16:51.148: HTTP: token [CRLF] len 2: '\15\12'
*Oct 9 04:16:51.148: HTTP: token [STRING] len 6: 'Accept'
*Oct 9 04:16:51.148: HTTP: token [OTHER] len 1: '-'
*Oct 9 04:16:51.148: HTTP: token [STRING] len 8: 'Language'
*Oct 9 04:16:51.148: HTTP: token [OTHER] len 1: ':'
*Oct 9 04:16:51.148: HTTP: token [SPACE] len 1: ' '
*Oct 9 04:16:51.148: HTTP: token [STRING] len 2: 'en'
*Oct 9 04:16:51.148: HTTP: token [OTHER] len 1: '-'
*Oct 9 04:16:51.148: HTTP: token [STRING] len 2: 'US'
*Oct 9 04:16:51.148: HTTP: token [CRLF] len 2: '\15\12'
*Oct 9 04:16:51.148: HTTP: token [STRING] len 4: 'User'
*Oct 9 04:16:51.148: HTTP: token [OTHER] len 1: '-'
*Oct 9 04:16:51.148: HTTP: token [STRING] len 5: 'Agent'
*Oct 9 04:16:51.148: HTTP: token [OTHER] len 1: ':'
*Oct 9 04:16:51.148: HTTP: token [SPACE] len 1: ' '
*Oct 9 04:16:51.148: HTTP: token [STRING] len 7: 'Mozilla'
*Oct 9 04:16:51.148: HTTP: token [OTHER] len 1: '/'
*Oct 9 04:16:51.148: HTTP: token [STRING] len 1: '4'
*Oct 9 04:16:51.148: HTTP: token [OTHER] len 1: '.'
*Oct 9 04:16:51.148: HTTP: token [STRING] len 1: '0'
*Oct 9 04:16:51.148: HTTP: token [SPACE] len 1: ' '
*Oct 9 04:16:51.148: HTTP: token [OTHER] len 1: '('
*Oct 9 04:16:51.148: HTTP: token [STRING] len 10: 'compatible'
*Oct 9 04:16:51.148: HTTP: token [OTHER] len 1: ';'
*Oct 9 04:16:51.148: HTTP: token [SPACE] len 1: ' '
*Oct 9 04:16:51.148: HTTP: token [STRING] len 4: 'MSIE'
*Oct 9 04:16:51.148: HTTP: token [SPACE] len 1: ' '
*Oct 9 04:16:51.148: HTTP: token [STRING] len 1: '8'
*Oct 9 04:16:51.148: HTTP: token [OTHER] len 1: '.'
*Oct 9 04:16:51.148: HTTP: token [STRING] len 1: '0'
*Oct 9 04:16:51.148: HTTP: token [OTHER] len 1: ';'
*Oct 9 04:16:51.148: HTTP: token [SPACE] len 1: ' '
*Oct 9 04:16:51.148: HTTP: token [STRING] len 7: 'Windows'
*Oct 9 04:16:51.148: HTTP: token [SPACE] len 1: ' '
*Oct 9 04:16:51.148: HTTP: token [STRING] len 2: 'NT'
*Oct 9 04:16:51.148: HTTP: token [SPACE] len 1: ' '
*Oct 9 04:16:51.148: HTTP: token [STRING] len 1: '6'
*Oct 9 04:16:51.148: HTTP: token [OTHER] len 1: '.'
*Oct 9 04:16:51.148: HTTP: token [STRING] len 1: '1'
*Oct 9 04:16:51.148: HTTP: token [OTHER] len 1: ';'
*Oct 9 04:16:51.148: HTTP: token [SPACE] len 1: ' '
*Oct 9 04:16:51.148: HTTP: token [STRING] len 7: 'Trident'
*Oct 9 04:16:51.148: HTTP: token [OTHER] len 1: '/'
*Oct 9 04:16:51.148: HTTP: token [STRING] len 1: '4'
*Oct 9 04:16:51.148: HTTP: token [OTHER] len 1: '.'
*Oct 9 04:16:51.148: HTTP: token [STRING] len 1: '0'
*Oct 9 04:16:51.148: HTTP: token [OTHER] len 1: ';'
*Oct 9 04:16:51.148: HTTP: token [SPACE] len 1: ' '
*Oct 9 04:16:51.148: HTTP: token [STRING] len 5: 'SLCC2'
*Oct 9 04:16:51.148: HTTP: token [OTHER] len 1: ';'
*Oct 9 04:16:51.148: HTTP: token [SPACE] len 1: ' '
*Oct 9 04:16:51.148: HTTP: token [OTHER] len 1: '.'
*Oct 9 04:16:51.148: HTTP: token [STRING] len 3: 'NET'
*Oct 9 04:16:51.148: HTTP: token [SPACE] len 1: ' '
*Oct 9 04:16:51.148: HTTP: token [STRING] len 3: 'CLR'
*Oct 9 04:16:51.148: HTTP: token [SPACE] len 1: ' '
*Oct 9 04:16:51.148: HTTP: token [STRING] len 1: '2'
*Oct 9 04:16:51.148: HTTP: token [OTHER] len 1: '.'

*Oct 9 04:16:51.148: HTTP: token [STRING] len 1: '0'
*Oct 9 04:16:51.148: HTTP: token [OTHER] len 1: '.'
*Oct 9 04:16:51.148: HTTP: token [STRING] len 5: '50727'
*Oct 9 04:16:51.148: HTTP: token [OTHER] len 1: ';'
*Oct 9 04:16:51.148: HTTP: token [SPACE] len 1: ' '
*Oct 9 04:16:51.148: HTTP: token [OTHER] len 1: '.'
*Oct 9 04:16:51.148: HTTP: token [STRING] len 3: 'NET'
*Oct 9 04:16:51.148: HTTP: token [SPACE] len 1: ' '
*Oct 9 04:16:51.149: HTTP: token [STRING] len 3: 'CLR'
*Oct 9 04:16:51.149: HTTP: token [SPACE] len 1: ' '
*Oct 9 04:16:51.149: HTTP: token [STRING] len 1: '3'
*Oct 9 04:16:51.149: HTTP: token [OTHER] len 1: '.'
*Oct 9 04:16:51.149: HTTP: token [STRING] len 1: '5'
*Oct 9 04:16:51.149: HTTP: token [OTHER] len 1: '.'
*Oct 9 04:16:51.149: HTTP: token [STRING] len 5: '30729'
*Oct 9 04:16:51.149: HTTP: token [OTHER] len 1: ';'
*Oct 9 04:16:51.149: HTTP: token [SPACE] len 1: ' '
*Oct 9 04:16:51.149: HTTP: token [OTHER] len 1: '.'
*Oct 9 04:16:51.149: HTTP: token [STRING] len 3: 'NET'
*Oct 9 04:16:51.149: HTTP: token [SPACE] len 1: ' '
*Oct 9 04:16:51.149: HTTP: token [STRING] len 3: 'CLR'
*Oct 9 04:16:51.149: HTTP: token [SPACE] len 1: ' '
*Oct 9 04:16:51.149: HTTP: token [STRING] len 1: '3'
*Oct 9 04:16:51.149: HTTP: token [OTHER] len 1: '.'
*Oct 9 04:16:51.149: HTTP: token [STRING] len 1: '0'
*Oct 9 04:16:51.149: HTTP: token [OTHER] len 1: '.'
*Oct 9 04:16:51.149: HTTP: token [STRING] len 5: '30729'
*Oct 9 04:16:51.149: HTTP: token [OTHER] len 1: ';'
*Oct 9 04:16:51.149: HTTP: token [SPACE] len 1: ' '
*Oct 9 04:16:51.149: HTTP: token [STRING] len 5: 'Media'
*Oct 9 04:16:51.149: HTTP: token [SPACE] len 1: ' '
*Oct 9 04:16:51.149: HTTP: token [STRING] len 6: 'Center'
*Oct 9 04:16:51.149: HTTP: token [SPACE] len 1: ' '
*Oct 9 04:16:51.149: HTTP: token [STRING] len 2: 'PC'
*Oct 9 04:16:51.149: HTTP: token [SPACE] len 1: ' '
*Oct 9 04:16:51.149: HTTP: token [STRING] len 1: '6'
*Oct 9 04:16:51.149: HTTP: token [OTHER] len 1: '.'
*Oct 9 04:16:51.149: HTTP: token [STRING] len 1: '0'
*Oct 9 04:16:51.149: HTTP: token [OTHER] len 1: ')'
*Oct 9 04:16:51.149: HTTP: token [CRLF] len 2: '\15\12'
***Oct 9 04:16:51.149: HTTP: token [STRING] len 6: 'Accept'**
*Oct 9 04:16:51.149: HTTP: token [OTHER] len 1: '-'
*Oct 9 04:16:51.149: HTTP: token [STRING] len 8: 'Encoding'
*Oct 9 04:16:51.149: HTTP: token [OTHER] len 1: ':'
*Oct 9 04:16:51.149: HTTP: token [SPACE] len 1: ' '
*Oct 9 04:16:51.149: HTTP: token [STRING] len 4: 'gzip'
*Oct 9 04:16:51.149: HTTP: token [OTHER] len 1: ','
*Oct 9 04:16:51.149: HTTP: token [SPACE] len 1: ' '
*Oct 9 04:16:51.149: HTTP: token [STRING] len 7: 'deflate'
*Oct 9 04:16:51.149: HTTP: token [CRLF] len 2: '\15\12'
*Oct 9 04:16:51.149: HTTP: token [STRING] len 4: 'Host'
*Oct 9 04:16:51.149: HTTP: token [OTHER] len 1: ':'
*Oct 9 04:16:51.149: HTTP: token [SPACE] len 1: ' '
*Oct 9 04:16:51.149: HTTP: token [STRING] len 3: '192'
*Oct 9 04:16:51.149: HTTP: token [OTHER] len 1: '.'
*Oct 9 04:16:51.149: HTTP: token [STRING] len 3: '168'
*Oct 9 04:16:51.149: HTTP: token [OTHER] len 1: '.'
*Oct 9 04:16:51.149: HTTP: token [STRING] len 3: '200'
*Oct 9 04:16:51.149: HTTP: token [OTHER] len 1: '.'
*Oct 9 04:16:51.149: HTTP: token [STRING] len 1: '1'
*Oct 9 04:16:51.149: HTTP: token [CRLF] len 2: '\15\12'
*Oct 9 04:16:51.149: WA-HTTPD: Cal [20.20.20.6] Parse GET,
src [20.20.20.6] dst [192.168.200.1] url [http://192.168.200.1/wireless]
*Oct 9 04:16:51.149: WA-STATE: Cal [20.20.20.6] State


```
INIT -> LOGIN
*Oct 9 04:16:51.149: WA-TIMER: Cal      [20.20.20.6    ] State timer
restart (120 secs)
*Oct 9 04:16:51.149: WA-PAGE : Cal      [20.20.20.6    ] 50164 Sending
Consent login form, len 1477
*Oct 9 04:16:51.149: WA-IO   : Cal      [20.20.20.6    ] 50164/0 IO
state READING -> WRITING
*Oct 9 04:16:51.149: WA-IO   : Cal      [20.20.20.6    ] 50164/0 Write
event, buffer addr 0x975629F0, length 1641, cursor 0
*Oct 9 04:16:51.149: WA-IO   : Cal      [20.20.20.6    ] 50164/0 Write
event, Write blocked, cursor 1460
*Oct 9 04:16:51.353: WA-QLFY : Cal      [20.20.20.6    ] Ingress qlfy,
Session found, ACL in-place, mac [0021.6a89.51ca], intercept
*Oct 9 04:16:51.353: WA-IO   : Cal      [20.20.20.6    ] 50164/0 Write
event, buffer addr 0x975629F0, length 1641, cursor 1460
*Oct 9 04:16:51.354: WA-IO   : Cal      [20.20.20.6    ] 50164/0 IO state
WRITING -> END
*Oct 9 04:16:51.354: WA-HTTPD: Cal      [20.20.20.6    ] 50164/0 Remove
IO ctx and close socket, id [6B00002B]
*Oct 9 04:16:51.354: WA-CLNT : Cal      [20.20.20.6    ] 50164 Client conn
timer start [0021.6a89.51ca] ioctx [6B00002B]
*Oct 9 04:16:51.360: WA-QLFY : Cal      [20.20.20.6    ] Ingress qlfy,
Session found, ACL in-place, mac [0021.6a89.51ca], intercept
*Oct 9 04:16:51.360: WA-QLFY : Cal      [20.20.20.6    ] Ingress qlfy,
Session found, ACL in-place, mac [0021.6a89.51ca], intercept
*Oct 9 04:16:51.361: WA-INFT : Cal      [20.20.20.6    ] 50164 TCP FIN,
dport 80
*Oct 9 04:16:53.460: WA-QLFY : Cal      [20.20.20.6    ] Ingress qlfy,
Session found, ACL in-place, mac [0021.6a89.51ca], intercept
*Oct 9 04:16:53.460: WA-INFT : Cal      [20.20.20.6    ] 50165 TCP SYN [2],
dport 443, LOGIN state
*Oct 9 04:16:53.464: WA-QLFY : Cal      [20.20.20.6    ] Ingress qlfy,
Session found, ACL in-place, mac [0021.6a89.51ca], intercept
*Oct 9 04:16:53.464: WA-HTTPD: Cal      [20.20.20.6    ] 50165/0 HTTP
Intercept, New fd 0, sport [50165], info hdl [0x3D00000B], mac [0021.6a89.51ca]
*Oct 9 04:16:53.464: WA-HTTPD: Cal      [20.20.20.6    ] 50165/0 Create
IO ctx, id [AB00002C], pid 208
*Oct 9 04:16:53.464: WA-CLNT : Cal      [20.20.20.6    ] 50165 Client
conn add [0021.6a89.51ca] ioctx [AB00002C] #2 pid 208
*Oct 9 04:16:53.464: WA-IO   : Cal      [20.20.20.6    ] 50165/0 IO state
NEW -> SSL_HANDSHAKING
*Oct 9 04:16:53.470: WA-QLFY : Cal      [20.20.20.6    ] Ingress qlfy,
Session found, ACL in-place, mac [0021.6a89.51ca], intercept
*Oct 9 04:16:53.474: WA-QLFY : Cal      [20.20.20.6    ] Ingress qlfy,
Session found, ACL in-place, mac [0021.6a89.51ca], intercept
*Oct 9 04:16:53.478: WA-IO   : Cal      [20.20.20.6    ] 50165/0 IO state
SSL_HANDSHAKING -> READING
*Oct 9 04:16:53.478: WA-IO   : Cal      [20.20.20.6    ] 50165/0 Read event,
read buffer addr 0x97546DF4, length 2048, cursor 0
*Oct 9 04:16:53.478: WA-IO   : Cal      [20.20.20.6    ] 50165/0 Read event,
Read blocked, cursor 0
*Oct 9 04:16:53.622: WA-QLFY : Cal      [20.20.20.6    ] Ingress qlfy, Session
found, ACL in-place, mac [0021.6a89.51ca], intercept
*Oct 9 04:16:53.622: WA-INFT : Cal      [20.20.20.6    ] 50165 TCP FIN,
dport 443
*Oct 9 04:16:53.622: WA-IO   : Cal      [20.20.20.6    ] 50165/0 Read event,
read buffer addr 0x97546DF4, length 2048, cursor 0
*Oct 9 04:16:53.622: %HTTPS: SSL read fail (-6992)
*Oct 9 04:16:53.622: WA-ERROR: Cal      [20.20.20.6    ] 50165/0 Read event,
Socket read error [ERROR] errno=5
*Oct 9 04:16:53.622: WA-HTTPD: Cal      [20.20.20.6    ] 50165/0 Remove IO
ctx and close
socket, id [AB00002C]
*Oct 9 04:16:53.622: WA-HTTPD: Cal      [20.20.20.6    ] 50165/0 Remove IO
```

```
ctx - Closed
SSL connection
*Oct 9 04:16:53.623: WA-CLNT : Ca1      [20.20.20.6    ] 50165 Client conn
timer start
[0021.6a89.51ca] ioctx [AB00002C]
*Oct 9 04:16:53.635: WA-QLFY : Ca1      [20.20.20.6    ] Ingress qlfy,
Session found, ACL in-place, mac [0021.6a89.51ca], intercept
*Oct 9 04:16:54.943: WA-QLFY : Ca1      [20.20.20.6    ] Ingress qlfy,
Session found, ACL in-place, mac [0021.6a89.51ca], intercept
*Oct 9 04:16:54.943: WA-INFT : Ca1      [20.20.20.6    ] 50166 TCP SYN [3],
dport 443, LOGIN state
*Oct 9 04:16:54.947: WA-QLFY : Ca1      [20.20.20.6    ] Ingress qlfy,
Session found, ACL in-place, mac [0021.6a89.51ca], intercept
*Oct 9 04:16:54.947: WA-HTTPD: Ca1      [20.20.20.6    ] 50166/0 HTTP
Intercept, New fd 0, sport [50166], info hdl [0x3D00000B], mac [0021.6a89.51ca]
*Oct 9 04:16:54.947: WA-HTTPD: Ca1      [20.20.20.6    ] 50166/0 Create
IO ctx, id [E300002D], pid 208
*Oct 9 04:16:54.947: WA-CLNT : Ca1      [20.20.20.6    ] 50166 Client conn add
[0021.6a89.51ca] ioctx [E300002D] #3 pid 208
*Oct 9 04:16:54.947: WA-IO   : Ca1      [20.20.20.6    ] 50166/0 IO state
NEW -> SSL_HANDSHAKING
*Oct 9 04:16:54.947: WA-QLFY : Ca1      [20.20.20.6    ] Ingress qlfy,
Session found, ACL in-place, mac [0021.6a89.51ca], intercept
*Oct 9 04:16:54.952: WA-QLFY : Ca1      [20.20.20.6    ] Ingress qlfy,
Session found, ACL in-place, mac [0021.6a89.51ca], intercept
*Oct 9 04:16:54.955: WA-IO   : Ca1      [20.20.20.6    ] 50166/0 IO state
SSL_HANDSHAKING -> READING
*Oct 9 04:16:54.955: WA-IO   : Ca1      [20.20.20.6    ] 50166/0 Read event,
read buffer addr 0x97577F50, length 2048, cursor 0
*Oct 9 04:16:54.956: WA-IO   : Ca1      [20.20.20.6    ] 50166/0 Read event,
Read blocked, cursor 0
*Oct 9 04:16:54.971: WA-QLFY : Ca1      [20.20.20.6    ] Ingress qlfy,
Session found, ACL in-place, mac [0021.6a89.51ca], intercept
*Oct 9 04:16:54.971: WA-INFT : Ca1      [20.20.20.6    ] 50166 TCP FIN,
dport 443
*Oct 9 04:16:54.971: WA-IO   : Ca1      [20.20.20.6    ] 50166/0 Read event,
read buffer addr 0x97577F50, length 2048, cursor 0
*Oct 9 04:16:54.971: %HTTPS: SSL read fail (-6992)
*Oct 9 04:16:54.971: WA-ERROR: Ca1      [20.20.20.6    ] 50166/0 Read event,
Socket read error [ERROR] errno=5
*Oct 9 04:16:54.971: WA-HTTPD: Ca1      [20.20.20.6    ] 50166/0 Remove IO
ctx and close socket, id [E300002D]
*Oct 9 04:16:54.971: WA-HTTPD: Ca1      [20.20.20.6    ] 50166/0 Remove IO
ctx - Closed SSL connection
*Oct 9 04:16:54.971: WA-CLNT : Ca1      [20.20.20.6    ] 50166 Client conn
timer start [0021.6a89.51ca] ioctx [E300002D]
*Oct 9 04:16:54.972: WA-QLFY : Ca1      [20.20.20.6    ] Ingress qlfy,
Session found, ACL in-place, mac [0021.6a89.51ca], intercept
*Oct 9 04:16:54.972: WA-INFT : Ca1      [20.20.20.6    ] 50167 TCP SYN [4],
dport 443, LOGIN state
*Oct 9 04:16:54.978: WA-QLFY : Ca1      [20.20.20.6    ] Ingress qlfy,
Session found, ACL in-place, mac [0021.6a89.51ca], intercept
*Oct 9 04:16:54.978: WA-QLFY : Ca1      [20.20.20.6    ] Ingress qlfy,
Session found, ACL in-place, mac [0021.6a89.51ca], intercept
*Oct 9 04:16:54.978: WA-HTTPD: Ca1      [20.20.20.6    ] 50167/0 HTTP
Intercept, New fd 0, sport [50167], info hdl [0x3D00000B], mac [0021.6a89.51ca]
*Oct 9 04:16:54.978: WA-HTTPD: Ca1      [20.20.20.6    ] 50167/0 Create IO
ctx, id [3B00002E], pid 208
*Oct 9 04:16:54.978: WA-CLNT : Ca1      [20.20.20.6    ] 50167 Client conn
add [0021.6a89.51ca] ioctx [3B00002E] #4 pid 208
*Oct 9 04:16:54.978: WA-IO   : Ca1      [20.20.20.6    ] 50167/0 IO state
NEW -> SSL_HANDSHAKING
*Oct 9 04:16:54.978: WA-QLFY : Ca1      [20.20.20.6    ] Ingress qlfy,
Session found, ACL in-place, mac [0021.6a89.51ca], intercept
```

```
*Oct 9 04:16:54.985: WA-QLFY : Cal [20.20.20.6 ] Ingress qlfy,
Session found, ACL in-place, mac [0021.6a89.51ca], intercept
*Oct 9 04:16:54.988: WA-IO : Cal [20.20.20.6 ] 50167/0 IO state
SSL_HANDSHAKING -> READING
*Oct 9 04:16:54.988: WA-IO : Cal [20.20.20.6 ] 50167/0 Read event,
read buffer addr 0x97546DF4, length 2048, cursor 0
*Oct 9 04:16:54.989: WA-IO : Cal [20.20.20.6 ] 50167/0 Read event,
Read blocked, cursor 0
*Oct 9 04:16:55.004: WA-QLFY : Cal [20.20.20.6 ] Ingress qlfy,
Session found, ACL in-place, mac [0021.6a89.51ca], intercept
*Oct 9 04:16:55.004: WA-IO : Cal [20.20.20.6 ] 50167/0 Read event,
read buffer addr 0x97546DF4, length 2048, cursor 0
*Oct 9 04:16:55.004: WA-IO : Cal [20.20.20.6 ] 50167/0 Read event,
Read blocked, cursor 555
*Oct 9 04:16:55.004: WA-IO : Cal [20.20.20.6 ] 50167/0 Read event,
Message ready
*Oct 9 04:16:55.004: HTTP: token [STRING] len 4: 'POST'
*Oct 9 04:16:55.004: WA-CLNT : Cal [20.20.20.6 ] 50167 Client conn
set authc ctx [0021.6a89.51ca] ioctx [3B00002E]
*Oct 9 04:16:55.004: HTTP: token [SPACE ] len 1: ' '
*Oct 9 04:16:55.004: HTTP: token [OTHER ] len 1: '/'
*Oct 9 04:16:55.004: HTTP: token [SPACE ] len 1: ' '
*Oct 9 04:16:55.004: HTTP: token [STRING] len 4: 'HTTP'
*Oct 9 04:16:55.004: HTTP: token [OTHER ] len 1: '/'
*Oct 9 04:16:55.004: HTTP: token [STRING] len 1: '1'
*Oct 9 04:16:55.004: HTTP: token [OTHER ] len 1: '.'
*Oct 9 04:16:55.004: HTTP: token [STRING] len 1: '1'
*Oct 9 04:16:55.004: HTTP: token [CRLF ] len 2: '\15\12'
*Oct 9 04:16:55.004: HTTP: token [STRING] len 6: 'Accept'
*Oct 9 04:16:55.004: HTTP: token [OTHER ] len 1: ':'
*Oct 9 04:16:55.004: HTTP: token [SPACE ] len 1: ' '
*Oct 9 04:16:55.004: HTTP: token [STRING] len 5: 'image'
*Oct 9 04:16:55.004: HTTP: token [OTHER ] len 1: '/'
*Oct 9 04:16:55.004: HTTP: token [STRING] len 4: 'jpeg'
*Oct 9 04:16:55.004: HTTP: token [OTHER ] len 1: ','
*Oct 9 04:16:55.004: HTTP: token [SPACE ] len 1: ' '
*Oct 9 04:16:55.004: HTTP: token [STRING] len 11: 'application'
*Oct 9 04:16:55.004: HTTP: token [OTHER ] len 1: '/'
*Oct 9 04:16:55.004: HTTP: token [STRING] len 1: 'x'
*Oct 9 04:16:55.004: HTTP: token [OTHER ] len 1: '-'
*Oct 9 04:16:55.004: HTTP: token [STRING] len 2: 'ms'
*Oct 9 04:16:55.005: HTTP: token [OTHER ] len 1: '-'
*Oct 9 04:16:55.005: HTTP: token [STRING] len 11: 'application'
*Oct 9 04:16:55.005: HTTP: token [OTHER ] len 1: ','
*Oct 9 04:16:55.005: HTTP: token [SPACE ] len 1: ' '
*Oct 9 04:16:55.005: HTTP: token [STRING] len 5: 'image'
*Oct 9 04:16:55.005: HTTP: token [OTHER ] len 1: '/'
*Oct 9 04:16:55.005: HTTP: token [STRING] len 3: 'gif'
*Oct 9 04:16:55.005: HTTP: token [OTHER ] len 1: ','
*Oct 9 04:16:55.005: HTTP: token [SPACE ] len 1: ' '
*Oct 9 04:16:55.005: HTTP: token [STRING] len 11: 'application'
*Oct 9 04:16:55.005: HTTP: token [OTHER ] len 1: '/'
*Oct 9 04:16:55.005: HTTP: token [STRING] len 4: 'xaml'
*Oct 9 04:16:55.005: HTTP: token [OTHER ] len 1: '+'
*Oct 9 04:16:55.005: HTTP: token [STRING] len 3: 'xml'
*Oct 9 04:16:55.005: HTTP: token [OTHER ] len 1: ','
*Oct 9 04:16:55.005: HTTP: token [SPACE ] len 1: ' '
*Oct 9 04:16:55.005: HTTP: token [STRING] len 5: 'image'
*Oct 9 04:16:55.005: HTTP: token [OTHER ] len 1: '/'
*Oct 9 04:16:55.005: HTTP: token [STRING] len 5: 'jpeg'
*Oct 9 04:16:55.005: HTTP: token [OTHER ] len 1: ','
*Oct 9 04:16:55.005: HTTP: token [SPACE ] len 1: ' '
*Oct 9 04:16:55.005: HTTP: token [STRING] len 11: 'application'
*Oct 9 04:16:55.005: HTTP: token [OTHER ] len 1: '/'
```

*Oct 9 04:16:55.005: HTTP: token [STRING] len 1: 'x'
*Oct 9 04:16:55.005: HTTP: token [OTHER] len 1: '-'
*Oct 9 04:16:55.005: HTTP: token [STRING] len 2: 'ms'
*Oct 9 04:16:55.005: HTTP: token [OTHER] len 1: '-'
*Oct 9 04:16:55.005: HTTP: token [STRING] len 4: 'xbap'
*Oct 9 04:16:55.005: HTTP: token [OTHER] len 1: ','
*Oct 9 04:16:55.005: HTTP: token [SPACE] len 1: ' '
Oct 9 04:16:55.005: HTTP: token [OTHER] len 1: ''
*Oct 9 04:16:55.005: HTTP: token [OTHER] len 1: '/'
Oct 9 04:16:55.005: HTTP: token [OTHER] len 1: ''
*Oct 9 04:16:55.005: HTTP: token [CRLF] len 2: '\\15\\12'
*Oct 9 04:16:55.005: HTTP: token [STRING] len 4: 'User'
*Oct 9 04:16:55.005: HTTP: token [OTHER] len 1: '-'
*Oct 9 04:16:55.005: HTTP: token [STRING] len 5: 'Agent'
*Oct 9 04:16:55.005: HTTP: token [OTHER] len 1: ':'
*Oct 9 04:16:55.005: HTTP: token [SPACE] len 1: ' '
*Oct 9 04:16:55.005: HTTP: token [STRING] len 7: 'Mozilla'
*Oct 9 04:16:55.005: HTTP: token [OTHER] len 1: '/'
*Oct 9 04:16:55.005: HTTP: token [STRING] len 1: '4'
*Oct 9 04:16:55.005: HTTP: token [OTHER] len 1: '.'
*Oct 9 04:16:55.005: HTTP: token [STRING] len 1: '0'
*Oct 9 04:16:55.005: HTTP: token [SPACE] len 1: ' '
*Oct 9 04:16:55.005: HTTP: token [OTHER] len 1: '('
*Oct 9 04:16:55.005: HTTP: token [STRING] len 10: 'compatible'
*Oct 9 04:16:55.005: HTTP: token [OTHER] len 1: ';'
*Oct 9 04:16:55.005: HTTP: token [SPACE] len 1: ' '
*Oct 9 04:16:55.005: HTTP: token [STRING] len 4: 'MSIE'
*Oct 9 04:16:55.005: HTTP: token [SPACE] len 1: ' '
*Oct 9 04:16:55.005: HTTP: token [STRING] len 1: '8'
*Oct 9 04:16:55.005: HTTP: token [OTHER] len 1: '.'
*Oct 9 04:16:55.005: HTTP: token [STRING] len 1: '0'
*Oct 9 04:16:55.005: HTTP: token [OTHER] len 1: ';'
*Oct 9 04:16:55.005: HTTP: token [SPACE] len 1: ' '
*Oct 9 04:16:55.005: HTTP: token [STRING] len 7: 'Windows'
*Oct 9 04:16:55.005: HTTP: token [SPACE] len 1: ' '
*Oct 9 04:16:55.005: HTTP: token [STRING] len 2: 'NT'
*Oct 9 04:16:55.005: HTTP: token [SPACE] len 1: ' '
*Oct 9 04:16:55.005: HTTP: token [STRING] len 1: '6'
*Oct 9 04:16:55.005: HTTP: token [OTHER] len 1: '.'
*Oct 9 04:16:55.005: HTTP: token [STRING] len 1: '1'
*Oct 9 04:16:55.005: HTTP: token [OTHER] len 1: ';'
*Oct 9 04:16:55.005: HTTP: token [SPACE] len 1: ' '
*Oct 9 04:16:55.005: HTTP: token [STRING] len 7: 'Trident'
*Oct 9 04:16:55.005: HTTP: token [OTHER] len 1: '/'
*Oct 9 04:16:55.005: HTTP: token [STRING] len 1: '4'
*Oct 9 04:16:55.005: HTTP: token [OTHER] len 1: '.'
*Oct 9 04:16:55.005: HTTP: token [STRING] len 1: '0'
*Oct 9 04:16:55.005: HTTP: token [OTHER] len 1: ';'
*Oct 9 04:16:55.005: HTTP: token [SPACE] len 1: ' '
*Oct 9 04:16:55.005: HTTP: token [STRING] len 5: 'SLCC2'
*Oct 9 04:16:55.005: HTTP: token [OTHER] len 1: ';'
*Oct 9 04:16:55.005: HTTP: token [SPACE] len 1: ' '
*Oct 9 04:16:55.005: HTTP: token [OTHER] len 1: '.'
*Oct 9 04:16:55.005: HTTP: token [STRING] len 3: 'NET'
*Oct 9 04:16:55.005: HTTP: token [SPACE] len 1: ' '
*Oct 9 04:16:55.005: HTTP: token [STRING] len 3: 'CLR'
*Oct 9 04:16:55.005: HTTP: token [SPACE] len 1: ' '
*Oct 9 04:16:55.005: HTTP: token [STRING] len 1: '2'
*Oct 9 04:16:55.005: HTTP: token [OTHER] len 1: '.'
*Oct 9 04:16:55.005: HTTP: token [STRING] len 1: '0'
*Oct 9 04:16:55.005: HTTP: token [OTHER] len 1: '.'
*Oct 9 04:16:55.005: HTTP: token [STRING] len 5: '50727'
*Oct 9 04:16:55.005: HTTP: token [OTHER] len 1: ';'
*Oct 9 04:16:55.005: HTTP: token [SPACE] len 1: ' '

*Oct 9 04:16:55.005: HTTP: token [OTHER] len 1: '.'
*Oct 9 04:16:55.005: HTTP: token [STRING] len 3: 'NET'
*Oct 9 04:16:55.005: HTTP: token [SPACE] len 1: ' '
*Oct 9 04:16:55.005: HTTP: token [STRING] len 3: 'CLR'
*Oct 9 04:16:55.005: HTTP: token [SPACE] len 1: ' '
*Oct 9 04:16:55.005: HTTP: token [STRING] len 1: '3'
*Oct 9 04:16:55.005: HTTP: token [OTHER] len 1: '.'
*Oct 9 04:16:55.005: HTTP: token [STRING] len 1: '5'
*Oct 9 04:16:55.005: HTTP: token [OTHER] len 1: '.'
*Oct 9 04:16:55.005: HTTP: token [STRING] len 5: '30729'
*Oct 9 04:16:55.005: HTTP: token [OTHER] len 1: ';'
*Oct 9 04:16:55.005: HTTP: token [SPACE] len 1: ' '
*Oct 9 04:16:55.005: HTTP: token [OTHER] len 1: '.'
*Oct 9 04:16:55.005: HTTP: token [STRING] len 3: 'NET'
*Oct 9 04:16:55.005: HTTP: token [SPACE] len 1: ' '
*Oct 9 04:16:55.005: HTTP: token [STRING] len 3: 'CLR'
*Oct 9 04:16:55.005: HTTP: token [SPACE] len 1: ' '
*Oct 9 04:16:55.005: HTTP: token [STRING] len 1: '3'
*Oct 9 04:16:55.005: HTTP: token [OTHER] len 1: '.'
*Oct 9 04:16:55.005: HTTP: token [STRING] len 1: '0'
*Oct 9 04:16:55.005: HTTP: token [OTHER] len 1: '.'
*Oct 9 04:16:55.005: HTTP: token [STRING] len 5: '30729'
*Oct 9 04:16:55.005: HTTP: token [OTHER] len 1: ';'
*Oct 9 04:16:55.005: HTTP: token [SPACE] len 1: ' '
*Oct 9 04:16:55.005: HTTP: token [STRING] len 5: 'Media'
*Oct 9 04:16:55.005: HTTP: token [SPACE] len 1: ' '
*Oct 9 04:16:55.005: HTTP: token [STRING] len 6: 'Center'
*Oct 9 04:16:55.005: HTTP: token [SPACE] len 1: ' '
*Oct 9 04:16:55.005: HTTP: token [STRING] len 2: 'PC'
*Oct 9 04:16:55.005: HTTP: token [SPACE] len 1: ' '
*Oct 9 04:16:55.005: HTTP: token [STRING] len 1: '6'
*Oct 9 04:16:55.005: HTTP: token [OTHER] len 1: '.'
*Oct 9 04:16:55.005: HTTP: token [STRING] len 1: '0'
*Oct 9 04:16:55.005: HTTP: token [OTHER] len 1: ')'
*Oct 9 04:16:55.005: HTTP: token [CRLF] len 2: '\15\12'
*Oct 9 04:16:55.005: HTTP: token [STRING] len 7: 'Content'
*Oct 9 04:16:55.005: HTTP: token [OTHER] len 1: '-'
*Oct 9 04:16:55.005: HTTP: token [STRING] len 4: 'Type'
*Oct 9 04:16:55.006: HTTP: token [OTHER] len 1: ':'
*Oct 9 04:16:55.006: HTTP: token [SPACE] len 1: ' '
*Oct 9 04:16:55.006: HTTP: token [STRING] len 11: 'application'
*Oct 9 04:16:55.006: HTTP: token [OTHER] len 1: '/'
*Oct 9 04:16:55.006: HTTP: token [STRING] len 1: 'x'
*Oct 9 04:16:55.006: HTTP: token [OTHER] len 1: '-'
*Oct 9 04:16:55.006: HTTP: token [STRING] len 3: 'www'
*Oct 9 04:16:55.006: HTTP: token [OTHER] len 1: '-'
*Oct 9 04:16:55.006: HTTP: token [STRING] len 4: 'form'
*Oct 9 04:16:55.006: HTTP: token [OTHER] len 1: '-'
*Oct 9 04:16:55.006: HTTP: token [STRING] len 10: 'urlencoded'
*Oct 9 04:16:55.006: HTTP: token [CRLF] len 2: '\15\12'
*Oct 9 04:16:55.006: HTTP: token [STRING] len 6: 'Accept'
*Oct 9 04:16:55.006: HTTP: token [OTHER] len 1: '-'
*Oct 9 04:16:55.006: HTTP: token [STRING] len 8: 'Encoding'
*Oct 9 04:16:55.006: HTTP: token [OTHER] len 1: ':'
*Oct 9 04:16:55.006: HTTP: token [SPACE] len 1: ' '
*Oct 9 04:16:55.006: HTTP: token [STRING] len 4: 'gzip'
*Oct 9 04:16:55.006: HTTP: token [OTHER] len 1: ','
*Oct 9 04:16:55.006: HTTP: token [SPACE] len 1: ' '
*Oct 9 04:16:55.006: HTTP: token [STRING] len 7: 'deflate'
*Oct 9 04:16:55.006: HTTP: token [CRLF] len 2: '\15\12'
*Oct 9 04:16:55.006: HTTP: token [STRING] len 4: 'Host'
*Oct 9 04:16:55.006: HTTP: token [OTHER] len 1: ':'
*Oct 9 04:16:55.006: HTTP: token [SPACE] len 1: ' '
*Oct 9 04:16:55.006: HTTP: token [STRING] len 3: '192'

```

*Oct 9 04:16:55.006: HTTP: token [OTHER ] len 1: '.'
*Oct 9 04:16:55.006: HTTP: token [STRING] len 3: '168'
*Oct 9 04:16:55.006: HTTP: token [OTHER ] len 1: '.'
*Oct 9 04:16:55.006: HTTP: token [STRING] len 3: '200'
*Oct 9 04:16:55.006: HTTP: token [OTHER ] len 1: '.'
*Oct 9 04:16:55.006: HTTP: token [STRING] len 1: '1'
*Oct 9 04:16:55.006: HTTP: token [CRLF ] len 2: '\15\12'
*Oct 9 04:16:55.006: HTTP: token [STRING] len 7: 'Content'
*Oct 9 04:16:55.006: HTTP: token [OTHER ] len 1: '-'
*Oct 9 04:16:55.006: HTTP: token [STRING] len 6: 'Length'
*Oct 9 04:16:55.006: HTTP: token [OTHER ] len 1: ':'
*Oct 9 04:16:55.006: HTTP: token [SPACE ] len 1: ' '
*Oct 9 04:16:55.006: HTTP: token [STRING] len 2: '52'
*Oct 9 04:16:55.006: HTTP: token [CRLF ] len 2: '\15\12'
*Oct 9 04:16:55.006: HTTP: token [STRING] len 10: 'Connection'
*Oct 9 04:16:55.006: HTTP: token [OTHER ] len 1: ':'
*Oct 9 04:16:55.006: HTTP: token [SPACE ] len 1: ' '
*Oct 9 04:16:55.006: HTTP: token [STRING] len 4: 'Keep'
*Oct 9 04:16:55.006: HTTP: token [OTHER ] len 1: '-'
*Oct 9 04:16:55.006: HTTP: token [STRING] len 5: 'Alive'
*Oct 9 04:16:55.006: HTTP: token [CRLF ] len 2: '\15\12'
*Oct 9 04:16:55.006: HTTP: token [STRING] len 5: 'Cache'
*Oct 9 04:16:55.006: HTTP: token [OTHER ] len 1: '-'
*Oct 9 04:16:55.006: HTTP: token [STRING] len 7: 'Control'
*Oct 9 04:16:55.006: HTTP: token [OTHER ] len 1: ':'
*Oct 9 04:16:55.006: HTTP: token [SPACE ] len 1: ' '
*Oct 9 04:16:55.006: HTTP: token [STRING] len 2: 'no'
*Oct 9 04:16:55.006: HTTP: token [OTHER ] len 1: '-'
*Oct 9 04:16:55.006: HTTP: token [STRING] len 5: 'cache'
*Oct 9 04:16:55.006: HTTP: token [CRLF ] len 2: '\15\12'
*Oct 9 04:16:55.006: HTTP: token [STRING] len 6: 'Accept'
*Oct 9 04:16:55.006: HTTP: token [OTHER ] len 1: '-'
*Oct 9 04:16:55.006: HTTP: token [STRING] len 8: 'Language'
*Oct 9 04:16:55.006: HTTP: token [OTHER ] len 1: ':'
*Oct 9 04:16:55.006: HTTP: token [SPACE ] len 1: ' '
*Oct 9 04:16:55.006: HTTP: token [STRING] len 2: 'en'
*Oct 9 04:16:55.006: HTTP: token [OTHER ] len 1: '-'
*Oct 9 04:16:55.006: HTTP: token [STRING] len 2: 'US'
*Oct 9 04:16:55.006: HTTP: token [CRLF ] len 2: '\15\12'
*Oct 9 04:16:55.006: HTTP: token [CRLF ] len 2: '\15\12'
*Oct 9 04:16:55.006: HTTP: token [STRING] len 2: 'au'
*Oct 9 04:16:55.006: HTTP: token [OTHER ] len 1: '_'
*Oct 9 04:16:55.006: HTTP: token [STRING] len 10: 'pxytimetag'
*Oct 9 04:16:55.006: HTTP: token [OTHER ] len 1: '='
*Oct 9 04:16:55.006: HTTP: token [STRING] len 10: '1023410187'
*Oct 9 04:16:55.006: HTTP: token [OTHER ] len 1: '&'
*Oct 9 04:16:55.006: HTTP: token [STRING] len 7: 'consent'
*Oct 9 04:16:55.006: HTTP: token [OTHER ] len 1: '_'
*Oct 9 04:16:55.006: HTTP: token [STRING] len 6: 'status'
*Oct 9 04:16:55.006: HTTP: token [OTHER ] len 1: '='
*Oct 9 04:16:55.006: HTTP: token [STRING] len 6: 'accept'
*Oct 9 04:16:55.006: HTTP: token [OTHER ] len 1: '&'
*Oct 9 04:16:55.006: HTTP: token [STRING] len 2: 'ok'
*Oct 9 04:16:55.006: HTTP: token [OTHER ] len 1: '='
*Oct 9 04:16:55.006: HTTP: token [STRING] len 2: 'OK'
*Oct 9 04:16:55.006: WA-HTTPD: Cal [20.20.20.6 ] 50167 Parse Consent
POST, au_pxytimetag [0x3D00000B]
*Oct 9 04:16:55.006: WA-HTTPD: Cal [20.20.20.6 ] 50167 Parse Consent
POST, consent status [accept]
*Oct 9 04:16:55.006: WA-HTTPD: Cal [20.20.20.6 ] Convey consent result
to SM, Attr mac: 0021.6a89.51ca
*Oct 9 04:16:55.006: AUTH-EVENT: [0021.6a89.51ca, Cal] Authc success from
WebAuth (3), status OK (0) / event success (0)
*Oct 9 04:16:55.006: AUTH-EVENT: [0021.6a89.51ca, Cal] Highest prio method:

```

INVALID, Authz method: INVALID, Conn hdl: webauth
*Oct 9 04:16:55.006: AUTH-EVENT: Raised event APPLY_USER_PROFILE (13) on handle 0x10000016
*Oct 9 04:16:55.006: AUTH-EVENT: Raised event RX_METHOD_AUTHC_SUCCESS (3) on handle 0x10000016
*Oct 9 04:16:55.006: AUTH-EVENT: [0021.6a89.51ca, Ca1] Queued AUTHC SUCCESS from WebAuth for session 0x10000016 (0021.6a89.51ca)
*Oct 9 04:16:55.006: WA-HTTPD: Ca1 [20.20.20.6] Convey consent result to SM, [OK]
***Oct 9 04:16:55.006: WA-STATE: Ca1 [20.20.20.6] State LOGIN -> AUTHC_SUCCESS**
*Oct 9 04:16:55.006: WA-TIMER: Ca1 [20.20.20.6] State timer stop
*Oct 9 04:16:55.006: WA-IO : Ca1 [20.20.20.6] 50167/0 IO state READING -> AUTHENTICATING
*Oct 9 04:16:55.006: AUTH-EVENT: [0021.6a89.51ca, Ca1] Received internal event APPLY_USER_PROFILE (handle 0x10000016)
*Oct 9 04:16:55.006: AUTH-EVENT: [0021.6a89.51ca, Ca1] Clearing AAA data for: 0021.6a89.51ca
*Oct 9 04:16:55.006: AUTH-SYNC: [0021.6a89.51ca, Ca1] Delay add/update sync of username for 0021.6a89.51ca / 0x10000016
*Oct 9 04:16:55.006: AUTH-EVENT: [0021.6a89.51ca, Ca1] Received User-Name 0021.6a89.51ca for client 0021.6a89.51ca
*Oct 9 04:16:55.007: AUTH-SYNC: [0021.6a89.51ca, Ca1] Delay add/update sync of auth-domain for 0021.6a89.51ca / 0x10000016
*Oct 9 04:16:55.007: AUTH-SYNC: [0021.6a89.51ca, Ca1] Delay add/update sync of target-scope for 0021.6a89.51ca / 0x10000016
*Oct 9 04:16:55.007: AUTH-EVENT: [0021.6a89.51ca, Ca1] Existing AAA ID: 0x00000015
*Oct 9 04:16:55.007: AUTH-EVENT: [0021.6a89.51ca, Ca1] Client 0021.6a89.51ca, Method webauth changing state from 'Running' to 'Authc Success'
*Oct 9 04:16:55.007: AUTH-EVENT: [0021.6a89.51ca, Ca1] Client 0021.6a89.51ca, Context changing state from 'Running' to 'Authc Success'
*Oct 9 04:16:55.007: AUTH-EVENT: [0021.6a89.51ca, Ca1] Non-SM policy applied for 0x10000016. Authz_attrs not freed
*Oct 9 04:16:55.007: AUTH-EVENT: Handling client event RX_METHOD_AUTHC_SUCCESS (3) for PRE, handle 0x10000016
*Oct 9 04:16:55.007: AUTH-SYNC: [0021.6a89.51ca, Ca1] Delay add/update sync of method for 0021.6a89.51ca / 0x10000016
*Oct 9 04:16:55.007: AUTH-EVENT: [0021.6a89.51ca, Ca1] SM will not apply policy for RX_METHOD_AUTHC_SUCCESS on 0x10000016 / 0021.6a89.51ca
*Oct 9 04:16:55.007: AUTH-EVENT: [0021.6a89.51ca, Ca1] Processing default action(s) for event RX_METHOD_AUTHC_SUCCESS for session 0x10000016.
*Oct 9 04:16:55.007: AUTH-EVENT: [0021.6a89.51ca, Ca1] Executing default action handler for AUTHC SUCCESS (0x10000016)
*Oct 9 04:16:55.007: AUTH-EVENT: [0021.6a89.51ca, Ca1] AUTHC_SUCCESS - authorize by default
*Oct 9 04:16:55.007: AUTH-EVENT: [0021.6a89.51ca, Ca1] Signalling Authz success for client 0021.6a89.51ca
*Oct 9 04:16:55.007: AUTH-EVENT: [0021.6a89.51ca, Ca1] Client 0021.6a89.51ca, Context changing state from 'Authc Success' to 'Authz Success'
*Oct 9 04:16:55.007: AUTH-EVENT: [0021.6a89.51ca, Ca1] Processing SM CB request for 0x10000016: Event: Authorize request (216)
*Oct 9 04:16:55.007: %IOSXE-7-PLATFORM: 1 process wcm: 0021.6a89.51ca WEBAUTH: received authentication response, status=0 AAA ID=0 protocol=0
*Oct 9 04:16:55.007: %IOSXE-7-PLATFORM: 1 process wcm: 0021.6a89.51ca WEBAUTH: Received message from webauth queue: 1
*Oct 9 04:16:55.007: %IOSXE-7-PLATFORM: 1 process wcm: 0021.6a89.51ca WEBAUTH: IOS Auth Event - Authentication Success!
*Oct 9 04:16:55.007: %IOSXE-7-PLATFORM: 1 process wcm: 0021.6a89.51ca Final flag values are, epmSendAcl 1, epmSendAclDone 0
*Oct 9 04:16:55.007: %IOSXE-7-PLATFORM: 1 process wcm: 0021.6a89.51ca client incoming attribute size are 43
*Oct 9 04:16:55.007: %IOSXE-7-PLATFORM: 1 process wcm: 0021.6a89.51ca WEBAUTH: received RADIUS attr type 450
*Oct 9 04:16:55.007: %IOSXE-7-PLATFORM: 1 process wcm: 0021.6a89.51ca Username

entry (0021.6a89.51ca) created for mobile
*Oct 9 04:16:55.007: %IOSXE-7-PLATFORM: 1 process wcm: 0021.6a89.51ca WEBAUTH:
Requesting post-auth policy application to EPM
*Oct 9 04:16:55.007: %IOSXE-7-PLATFORM: 1 process wcm: 0021.6a89.51ca Send
request to EPM
*Oct 9 04:16:55.007: %IOSXE-7-PLATFORM: 1 process wcm: 0021.6a89.51ca aaa
attribute list length is 43
*Oct 9 04:16:55.007: %IOSXE-7-PLATFORM: 1 process wcm: 0021.6a89.51ca Sending
Activate request for session handle 268435477 successful
*Oct 9 04:16:55.007: %IOSXE-7-PLATFORM: 1 process wcm: 0021.6a89.51ca Post-auth
policy request sent! Now wait for post-auth policy ACK from EPM
*Oct 9 04:16:55.007: %IOSXE-7-PLATFORM: 1 process wcm: 0021.6a89.51ca Setting the
epmSendAclDone flag.
*Oct 9 04:16:55.007: %IOSXE-7-PLATFORM: 1 process wcm: 0021.6a89.51ca Change state
to WEBAUTH_NOL3SEC (14) last state WEBAUTH_REQD (8)
*Oct 9 04:16:55.007: %IOSXE-7-PLATFORM: 1 process wcm: 0021.6a89.51ca
PEM_UPDATE_STATE to RUN, EPM POLICY ACK not received yet, moving client to
AUTHZ_WAIT state
*Oct 9 04:16:55.007: %IOSXE-7-PLATFORM: 1 process wcm: 0021.6a89.51ca Change state
to AUTHZ_WAIT (19) last state WEBAUTH_NOL3SEC (14)
*Oct 9 04:16:55.007: %IOSXE-7-PLATFORM: 1 process wcm: wcdb_is_auth_changed: Client
in AUTHZ_WAIT state, Not changing WCDB auth state
*Oct 9 04:16:55.007: %IOSXE-7-PLATFORM: 1 process wcm: 0021.6a89.51ca Stopping
deletion of Mobile Station: (callerId: 74)
*Oct 9 04:16:55.007: %IOSXE-7-PLATFORM: 1 process wcm: 0021.6a89.51ca Session
Timeout is 1800 - starting session timer for the mobile
*Oct 9 04:16:55.007: %IOSXE-7-PLATFORM: 1 process wcm: 0021.6a89.51ca 20.20.20.6
AUTHZ_WAIT (19) Reached PLUMBFASPATH: from line 4289
*Oct 9 04:16:55.007: %IOSXE-7-PLATFORM: 1 process wcm: 0021.6a89.51ca 20.20.20.6
AUTHZ_WAIT (19) Replacing Fast Path rule^M on AP c8f9.f983.4260 , slot 1 802.1P =
0^M
*Oct 9 04:16:55.007: %IOSXE-7-PLATFORM: 1 process wcm: 0021.6a89.51ca 20.20.20.6
AUTHZ_WAIT (19) Successfully plumbed mobile rule
*Oct 9 04:16:55.007: %IOSXE-7-PLATFORM: 1 process wcm: 0021.6a89.51ca WEBAUTH:
callback status - authentication succeeded
*Oct 9 04:16:55.007: %IOSXE-7-PLATFORM: 1 process wcm: PEM rcv processing msg
Add SCB(3)
*Oct 9 04:16:55.007: %IOSXE-7-PLATFORM: 1 process wcm: 0021.6a89.51ca 20.20.20.6,
auth_state 19 mmRole Local !!!
*Oct 9 04:16:55.007: %IOSXE-7-PLATFORM: 1 process wcm: 0021.6a89.51ca 20.20.20.6,
auth_state 19 mmRole Local, updating wcdb not needed
*Oct 9 04:16:55.007: %IOSXE-7-PLATFORM: 1 process wcm: 0021.6a89.51ca Tclas Plumb
needed: 0
*Oct 9 04:16:55.008: AUTH-EVENT: Raising ext evt Template Deactivated (10) on
session 0x10000015, client (unknown) (0), hdl 0x00000000, attr_list 0x5A00033F
*Oct 9 04:16:55.008: AUTH-EVENT: SM will not send event Template Deactivated
to PRE for 0x10000015
*Oct 9 04:16:55.008: %IOSXE-7-PLATFORM: 1 process wcm: EPM: Init feature, client
handle 58b5800000001c session 10000015 authz 1f000015
*Oct 9 04:16:55.008: %IOSXE-7-PLATFORM: 1 process wcm: EPM: Activate feature
client handle 58b5800000001c sess 10000015 authz 1f000015
*Oct 9 04:16:55.008: %IOSXE-7-PLATFORM: 1 process wcm: EPM: Policy
enforcement - client handle 58b5800000001c session 7600000b authz 1f000015
*Oct 9 04:16:55.008: %IOSXE-7-PLATFORM: 1 process wcm: EPM: Netflow policy
enforcement - client handle 58b5800000001c sess 7600000b authz 1f000015 msg_type 0
policy_status 0 attr len 0
*Oct 9 04:16:55.008: %IOSXE-7-PLATFORM: 1 process wcm: PEM rcv processing msg
Epm spi response(12)
*Oct 9 04:16:55.008: %IOSXE-7-PLATFORM: 1 process wcm: 0021.6a89.51ca Received
activate_features_resp for client handle 24969359310979100
*Oct 9 04:16:55.008: %IOSXE-7-PLATFORM: 1 process wcm: 0021.6a89.51ca Received
activate_features_resp for EPM session handle 268435477
*Oct 9 04:16:55.008: %IOSXE-7-PLATFORM: 1 process wcm: PEM rcv processing msg Epm
spi response(12)

*Oct 9 04:16:55.008: %IOSXE-7-PLATFORM: 1 process wcm: 0021.6a89.51ca Received policy_enforcement_response for client handle 24969359310979100

*Oct 9 04:16:55.008: %IOSXE-7-PLATFORM: 1 process wcm: 0021.6a89.51ca Received policy_enforcement_response for EPM session handle 1979711499

*Oct 9 04:16:55.008: %IOSXE-7-PLATFORM: 1 process wcm: 0021.6a89.51ca Received response for _EPM_SPI_ACTIVATE_FEATURES request sent for client

*Oct 9 04:16:55.008: %IOSXE-7-PLATFORM: 1 process wcm: 0021.6a89.51ca Received _EPM_SPI_STATUS_SUCCESS for request sent for client

*Oct 9 04:16:55.008: %IOSXE-7-PLATFORM: 1 process wcm: 0021.6a89.51ca Post-auth policy ACK recvd from EPM, unset flag on MSCB

*Oct 9 04:16:55.008: %IOSXE-7-PLATFORM: 1 process wcm: 0021.6a89.51ca Client in AUTHZ_WAIT state, advance to RUN

*Oct 9 04:16:55.008: %IOSXE-7-PLATFORM: 1 process wcm: 0021.6a89.51ca Change state to RUN (20) last state AUTHZ_WAIT (19)

*Oct 9 04:16:55.008: %IOSXE-7-PLATFORM: 1 process wcm: 0021.6a89.51ca WCDB_CHANGE: Client 1 m_vlan 20 Radio iif id 0x6025800000000e bssid iif id 0x498f8000000001b, bssid c8f9.f983.4260

*Oct 9 04:16:55.009: %IOSXE-7-PLATFORM: 1 process wcm: 0021.6a89.51ca WCDB_AUTH: Adding opt82 len 0

*Oct 9 04:16:55.009: %IOSXE-7-PLATFORM: 1 process wcm: 0021.6a89.51ca WCDB_LLM: prev Mob state 1 curr Mob State 1 llReq flag 0

*Oct 9 04:16:55.009: %IOSXE-7-PLATFORM: 1 process wcm: 0021.6a89.51ca auth state 4 mob state 1 setWme 0 wme 1 roam_sent 0

*Oct 9 04:16:55.009: %IOSXE-7-PLATFORM: 1 process wcm: 0021.6a89.51ca WCDB_CHANGE: auth=RUN(4) vlan 20 radio 1 client_id 0x58b58000000001c mobility=Local(1) src_int 0x45e78000000000c dst_int 0x0 ackflag 2 reassoc_client 0 llm_notif 0 ip 20.20.20.6 ip_learn_type DHCP

*Oct 9 04:16:55.009: %IOSXE-7-PLATFORM: 1 process wcm: 0021.6a89.51ca 20.20.20.6 RUN (20) Reached PLUMBFASPATH: from line 3862

*Oct 9 04:16:55.009: %IOSXE-7-PLATFORM: 1 process wcm: 0021.6a89.51ca 20.20.20.6 RUN (20) Replacing Fast Path rule^M on AP c8f9.f983.4260 , slot 1 802.1P = 0^M

*Oct 9 04:16:55.009: %IOSXE-7-PLATFORM: 1 process wcm: 0021.6a89.51ca 20.20.20.6 RUN (20) Successfully plumbed mobile rule

*Oct 9 04:16:55.009: %IOSXE-7-PLATFORM: 1 process wcm: PEM recv processing msg Add SCB(3)

*Oct 9 04:16:55.009: %IOSXE-7-PLATFORM: 1 process wcm: 0021.6a89.51ca 20.20.20.6, auth_state 20 mmRole Local !!!

*Oct 9 04:16:55.009: %IOSXE-7-PLATFORM: 1 process wcm: 0021.6a89.51ca 20.20.20.6, auth_state 20 mmRole Local, updating wcdb not needed

*Oct 9 04:16:55.009: %IOSXE-7-PLATFORM: 1 process wcm: 0021.6a89.51ca Tclas Plumb needed: 0

*Oct 9 04:16:55.010: AUTH-EVENT: [0021.6a89.51ca, Ca1] Authz complete (SUCCESS) for client 0021.6a89.51ca/0x10000016 reported

*Oct 9 04:16:55.010: AUTH-EVENT: Raised event AUTHZ_SUCCESS (10) on handle 0x10000016

*Oct 9 04:16:55.010: AUTH-EVENT: [0021.6a89.51ca, Ca1] Received internal event AUTHZ_SUCCESS (handle 0x10000016)

*Oct 9 04:16:55.010: AUTH-EVENT: [0021.6a89.51ca, Ca1] Processing AUTHZ_CB RESULT (success) for 0x10000016

*Oct 9 04:16:55.010: AUTH-EVENT: [0021.6a89.51ca, Ca1] Processing SM CB request for 0x10000016: Event: Authz result processed (215)

*Oct 9 04:16:55.010: AUTH-EVENT: [0021.6a89.51ca, Ca1] Authz result processed, result: 0

*Oct 9 04:16:55.010: WA-SM : Ca1 [20.20.20.6] AAA result procd, [SUCCESS] [NO FAILURE], info hdl 3D00000B, SM hdl 10000016

*Oct 9 04:16:55.010: AUTH-EVENT: [0021.6a89.51ca, Ca1] SM Reauth Plugin: Client authz change, result=Success

*Oct 9 04:16:55.010: AUTH-EVENT: [0021.6a89.51ca, Ca1] Signalling Authz complete (success) for client 0x10000016

*Oct 9 04:16:55.010: WA-HTTPD: Ca1 [20.20.20.6] 50167/0 AAA result [7], info hdl 3D00000B

*Oct 9 04:16:55.010: WA-AAA : Ca1 [20.20.20.6] 50167/0 AAA reply Successful

*Oct 9 04:16:55.010: WA-STATE: Ca1 [20.20.20.6] State

```
AUTHC_SUCCESS -> HTTP_FIN_WAIT
*Oct 9 04:16:55.010: WA-TIMER: Ca1      [20.20.20.6      ] FIN-wait timer
start (3 secs)
*Oct 9 04:16:55.011: WA-PAGE : Ca1      [20.20.20.6      ] 50167 Sending Consent
logout page, logout [https://192.168.200.1/logout.html] final [-]
*Oct 9 04:16:55.011: WA-IO   : Ca1      [20.20.20.6      ] 50167/0 IO state
AUTHENTICATING -> WRITING
*Oct 9 04:16:55.011: WA-IO   : Ca1      [20.20.20.6      ] 50167/0 Write event,
buffer addr 0x97577F9C, length 1567, cursor 0
*Oct 9 04:16:55.011: WA-IO   : Ca1      [20.20.20.6      ] 50167/0 IO state
WRITING -> END
*Oct 9 04:16:55.011: WA-HTTPD: Ca1      [20.20.20.6      ] 50167/0 Remove IO
ctx and close socket,
id [3B00002E]
*Oct 9 04:16:55.011: WA-HTTPD: Ca1      [20.20.20.6      ] 50167/0 Remove IO
ctx - Closed SSL connection
*Oct 9 04:16:55.011: WA-CLNT : Ca1      [20.20.20.6      ] 50167 Client conn
timer start [0021.6a89.51ca] ioctx [3B00002E]
*Oct 9 04:16:55.017: WA-QLFY : Ca1      [20.20.20.6      ] Ingress qlfy,
Session found, ACL in-place, mac [0021.6a89.51ca], intercept
*Oct 9 04:16:55.017: WA-QLFY : Ca1      [20.20.20.6      ] Ingress qlfy,
Session found, ACL in-place, mac [0021.6a89.51ca], intercept
*Oct 9 04:16:55.017: WA-INFT : Ca1      [20.20.20.6      ] 50167 TCP FIN,
dport 443
*Oct 9 04:16:58.010: WA-TIMER: Ca1      [20.20.20.6      ] FIN-wait timer timeout
*Oct 9 04:16:58.010: WA-STATE: Ca1      [20.20.20.6      ] State
HTTP_FIN_WAIT -> AUTHZ
*Oct 9 04:16:58.010: WA-ACL  : Ca1      [20.20.20.6      ] Remove IPv4
intecept ACL via FFM, name
"IP-Adm-V4-Int-ACL-global", pri 50, IIF 58B5800000001C
*Oct 9 04:16:58.011: WA-ACL  : Ca1      [20.20.20.6      ] Remove IPv6
intecept ACL via FFM, name
"IP-Adm-V6-Int-ACL-global", pri 52, IIF 58B5800000001C
*Oct 9 04:16:58.011: WA-ACL  : Ca1      [20.20.20.6      ] Add IPv4 logout
ACL via FFM, name
"IP-Adm-V4-LOGOUT-ACL-1027", pri 51, IIF 58B5800000001C
*Oct 9 04:17:01.354: WA-CLNT :          [20.20.20.6      ] 50164 Client conn
timer exp [0021.6a89.51ca] ioctx [6B00002B]
*Oct 9 04:17:01.354: WA-CLNT :          [20.20.20.6      ] 50164 Client conn
del [0021.6a89.51ca] ioctx [6B00002B] #3
*Oct 9 04:17:03.623: WA-CLNT : [20.20.20.6      ] 50165 Client conn timer exp
[0021.6a89.51ca] ioctx [AB00002C]
*Oct 9 04:17:03.623: WA-CLNT [20.20.20.6      ] 50165 Client conn del
[0021.6a89.51ca] ioctx [AB00002C] #2
*Oct 9 04:17:04.971: WA-CLNT :          [20.20.20.6      ] 50166 Client conn
timer exp [0021.6a89.51ca] ioctx [E300002D]
*Oct 9 04:17:04.971: WA-CLNT :          [20.20.20.6      ] 50166 Client conn
del [0021.6a89.51ca] ioctx [E300002D] #1
*Oct 9 04:17:05.012: WA-CLNT :          [20.20.20.6      ]
[0021.6a89.51ca] ioctx [3B00002E]
*Oct 9 04:17:05.012: WA-CLNT :          [20.20.20.6      ] 50167 Client conn
del [0021.6a89.51ca] ioctx [3B00002E] #0
```