

Terminierende IPSec-Tunnel auf mehreren Cisco Secure PIX Firewall-Schnittstellen mit Xauth

Inhalt

[Einführung](#)

[Bevor Sie beginnen](#)

[Konventionen](#)

[Voraussetzungen](#)

[Verwendete Komponenten](#)

[Konfigurieren](#)

[Netzwerkdigramm](#)

[Konfigurationen](#)

[Überprüfen](#)

[Fehlerbehebung](#)

[Hub-PIX-Debugger](#)

[Debugger für interne Router](#)

[VPN-Clientprotokoll](#)

[Zugehörige Informationen](#)

Einführung

In diesem Dokument wird eine IPSec-Konfiguration mit den folgenden Elementen veranschaulicht: Crypto Maps werden auf mehrere Schnittstellen des PIX angewendet; erweiterte Authentifizierung (xauth) von VPN-Clients; dynamische Zuweisung einer privaten IP-Adresse aus einem Pool zu VPN-Clients; Befehlsfunktionalität und **nat 0-Zugriffslisten**, mit der Hosts in einem LAN private IP-Adressen mit einem Remote-Benutzer verwenden können und dennoch eine NAT-Adresse (Network Address Translation) vom PIX erhalten, um ein nicht vertrauenswürdiges Netzwerk aufzurufen.

Diese Konfiguration hat die folgenden Ziele:

- Authentifizierung eines Remote-Benutzers anhand einer TACACS+-Datenbank.
- Dynamische Zuweisung einer privaten IP-Adresse zu einem Remote-Benutzer.
- Verschlüsselung des Datenverkehrs von einem Remote-Benutzer zu einem Hub-PIX
- Verschlüsselung des Datenverkehrs von einem Hub-PIX zu einem LAN

Hinweis: Bei der Erstellung dieses Dokuments werden die erstellten Sicherheitszuordnungen (Security Associations, SAs) durch eine falsche Anmeldung beim AAA-Server (Authentication, Authorization, Accounting) gelöscht.

Bevor Sie beginnen

Konventionen

Weitere Informationen zu Dokumentkonventionen finden Sie in den [Cisco Technical Tips Conventions](#).

Voraussetzungen

Für dieses Dokument bestehen keine besonderen Voraussetzungen.

Verwendete Komponenten

Diese Konfiguration wurde mit den unten stehenden Software- und Hardwareversionen entwickelt und getestet.

- Cisco IOS[®] Software Version 12.2.8.T oder höher
- Cisco PIX IOS Version 6.1(1)
- Cisco VPN Client 3.5

Die in diesem Dokument enthaltenen Informationen wurden aus Geräten in einer bestimmten Laborumgebung erstellt. Alle in diesem Dokument verwendeten Geräte haben mit einer leeren (Standard-)Konfiguration begonnen. Wenn Sie in einem Live-Netzwerk arbeiten, stellen Sie sicher, dass Sie die potenziellen Auswirkungen eines Befehls verstehen, bevor Sie es verwenden.

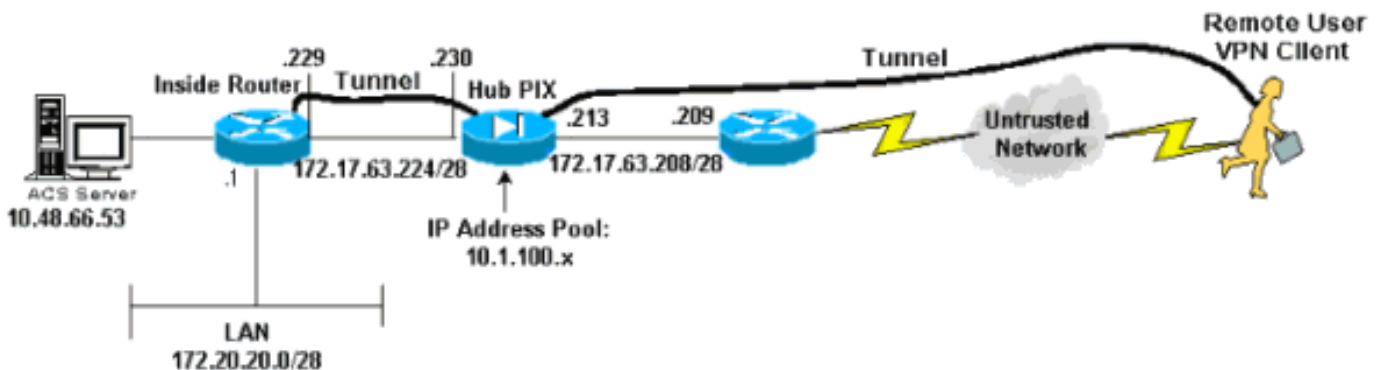
Konfigurieren

In diesem Abschnitt erhalten Sie Informationen zum Konfigurieren der in diesem Dokument beschriebenen Funktionen.

Hinweis: Um weitere Informationen zu den in diesem Dokument verwendeten Befehlen zu erhalten, verwenden Sie das [Command Lookup Tool](#) ([nur registrierte](#) Kunden).

Netzwerkdiagramm

In diesem Dokument wird die im Diagramm unten dargestellte Netzwerkeinrichtung verwendet.



Konfigurationen

In diesem Dokument werden die unten angegebenen Konfigurationen verwendet.

- [Hub-PIX-Konfiguration](#)

- [Konfiguration des internen Routers](#)
- [VPN-Client-Konfiguration](#)

Hub-PIX-Konfiguration

```

PIX Version 6.1(1)
nameif ethernet0 outside security0
nameif ethernet1 inside security100
nameif ethernet2 intf2 security10
nameif ethernet3 intf3 security15
enable password OnTrBUG1Tp0edmkr encrypted
passwd 2KFQnbNIdI.2KYOU encrypted
hostname HubPix
fixup protocol ftp 21
fixup protocol http 80
fixup protocol h323 1720
fixup protocol rsh 514
fixup protocol rtsp 554
fixup protocol smtp 25
fixup protocol sqlnet 1521
fixup protocol sip 5060
fixup protocol skinny 2000
names
access-list nonat permit ip 172.20.20.0 255.255.255.0
10.1.100.0 255.255.255.0
access-list 125 permit ip 10.1.100.0 255.255.255.0
172.20.20.0 255.255.255.0
pager lines 24
logging console debugging
interface ethernet0 auto
interface ethernet1 auto
interface ethernet2 auto shutdown
interface ethernet3 auto shutdown
mtu outside 1500
mtu inside 1500
mtu intf2 1500
mtu intf3 1500
ip address outside 172.17.63.213 255.255.255.240
ip address inside 172.17.63.230 255.255.255.240
ip address intf2 127.0.0.1 255.255.255.255
ip address intf3 127.0.0.1 25(B5.255.255.255
ip audit info action alarm
ip audit attack action alarm
ip local pool mypool 10.1.100.1-10.1.100.254
no failover
failover timeout 0:00:00
failover poll 15
failover ip address outside 0.0.0.0
failover ip address inside 0.0.0.0
failover ip address intf2 0.0.0.0
failover ip address intf3 0.0.0.0
pdm history enable
arp timeout 14400
global (outside) 1 172.17.63.210
nat (inside) 0 access-list nonat
nat (inside) 1 172.20.20.0 255.255.255.0 0 0
route outside 0.0.0.0 0.0.0.0 172.17.63.209 1
route inside 10.48.66.53 255.255.255.255 172.17.63.229 1
route inside 172.20.20.0 255.255.255.0 172.17.63.229 1
timeout xlate 3:00:00
timeout conn 1:00:00 half-closed 0:10:00 udp 0:02:00 rpc
0:10:00

```

```
h323 0:05:00 sip 0:30:00 sip_media 0:02:00
timeout uauth 0:05:00 absolute
aaa-server TACACS+ protocol tacacs+
aaa-server RADIUS protocol radius
aaa-server partner protocol tacacs+
aaa-server partner (inside) host 10.48.66.53 cisco123
timeout 5
no snmp-server location
no snmp-server contact
snmp-server community public
no snmp-server enable traps
floodguard enable
sysopt ipsec pl-compatible
no sysopt route dnat
crypto ipsec transform-set myset esp-des esp-md5-hmac
crypto dynamic-map dynmap 10 set transform-set myset
crypto map internal 10 ipsec-isakmp
crypto map internal 10 match address 125
crypto map internal 10 set peer 172.17.63.229
crypto map internal 10 set transform-set myset
crypto map internal interface inside
crypto map dyn-map 10 ipsec-isakmp dynamic dynmap
crypto map dyn-map client authentication partner
crypto map dyn-map interface outside
isakmp enable outside
isakmp enable inside
isakmp key ***** address 172.17.63.229 netmask
255.255.255.255
isakmp key ***** address 0.0.0.0 netmask 0.0.0.0
isakmp identity address
isakmp policy 10 authentication pre-share
isakmp policy 10 encryption des
isakmp policy 10 hash md5
isakmp policy 10 group 2
isakmp policy 10 lifetime 86400
vpngroup vpn3000 idle-time 1800
vpngroup vpn3000 password *****
vpngroup vpn3 address-pool mypool
vpngroup vpn3 dns-server 172.20.20.2
vpngroup vpn3 wins-server 172.20.20.2
vpngroup vpn3 default-domain cisco.com
vpngroup vpn3 idle-time 1800
telnet timeout 5
ssh timeout 5
terminal width 80
Cryptochecksum:fcd6d79f6a662b82e5f450ed833f34e6
: end
[OK]
```

Konfiguration des internen Routers

```
version 12.2
service timestamps debug uptime
service timestamps log uptime
no service password-encryption
!
hostname inside
!
enable password ww
!
ip subnet-zero
ip cef
!
```

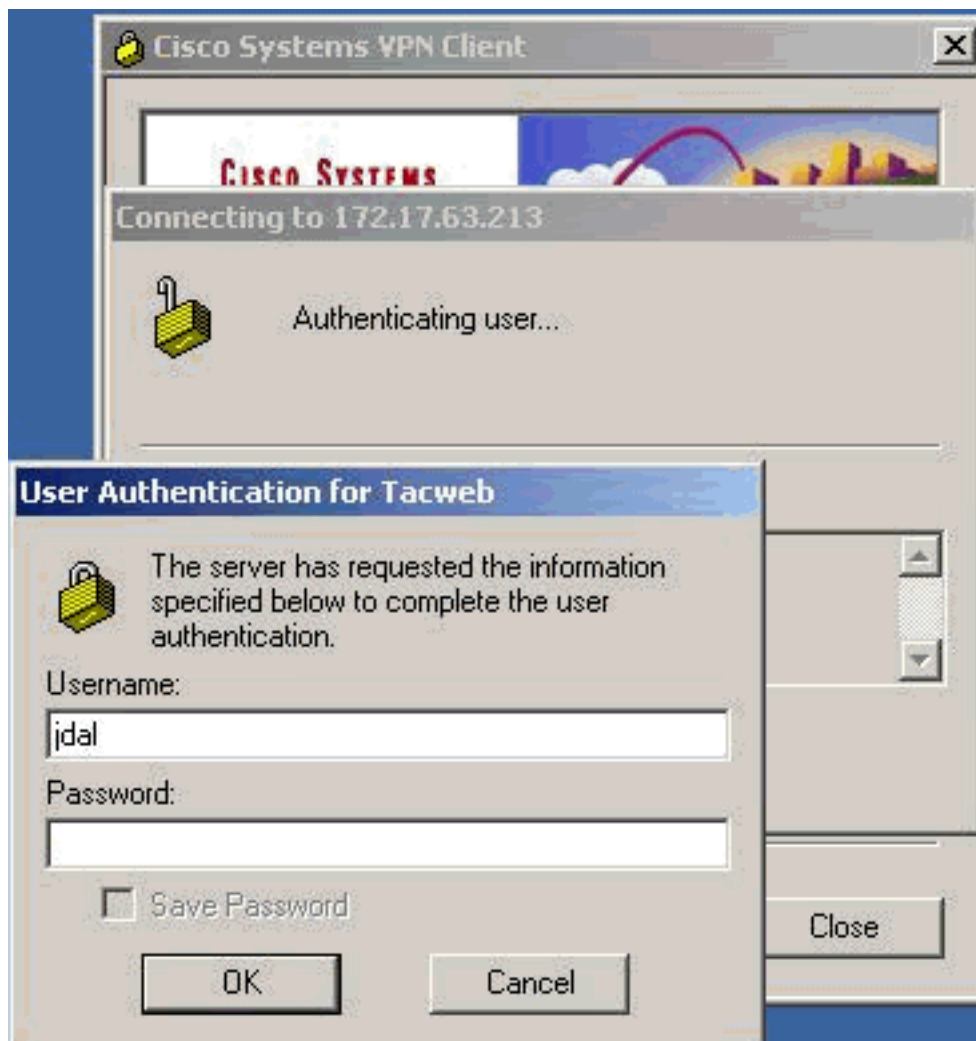
```
!  
!  
ip audit notify log  
ip audit po max-events 100  
!  
!--- Create an Internet Security Association and Key  
Management Protocol (ISAKMP) !--- policy for Phase 1  
negotiations for the VPN 3.x Clients. crypto isakmp  
policy 10  
  hash md5  
  authentication pre-share  
  group 2  
!--- Specify the pre-shared key for the LAN-to-LAN  
tunnel. crypto isakmp key ciscotac address 172.17.63.230  
!  
!  
!--- Create the Phase 2 Policy for actual data  
encryption. crypto ipsec transform-set tacset esp-des  
esp-md5-hmac  
!  
!--- Create the actual crypto map. crypto map tacmap 25  
ipsec-isakmp  
  set peer 172.17.63.230  
  set transform-set tacset  
  match address 105  
!  
!  
!  
!  
!  
!  
!  
!  
!  
!  
controller ISA 6/1  
!  
!  
!  
!  
interface Serial2/0  
  no ip address  
  shutdown  
  serial restart_delay 0  
!  
interface Serial2/1  
  no ip address  
  shutdown  
  serial restart_delay 0  
!  
interface Serial2/2  
  no ip address  
  shutdown  
  serial restart_delay 0  
!  
interface Serial2/3  
  no ip address  
  shutdown  
  serial restart_delay 0  
!  
interface FastEthernet3/0  
  ip address 10.48.66.46 255.255.254.0  
  duplex half  
!  
!--- Apply the crypto map on the outside interface.
```

```
interface FastEthernet3/1 ip address 172.17.63.229
255.255.255.240
duplex half
crypto map tacmap
!
interface FastEthernet5/0
ip address 172.20.20.20 255.255.255.0
duplex half
!
ip classless
ip route 0.0.0.0 0.0.0.0 172.17.63.230
no ip http server
ip pim bidir-enable
!
!
access-list 105 permit ip 172.20.20.0 0.0.0.255
10.1.100.0 0.0.0.255
!
!
call rsvp-sync
!
!
mgcp profile default
!
dial-peer cor custom
!
!
!
!
gatekeeper
shutdown
!
!
line con 0
line aux 0
line vty 0 4
login
!
!
end
```

[VPN-Client-Konfiguration](#)

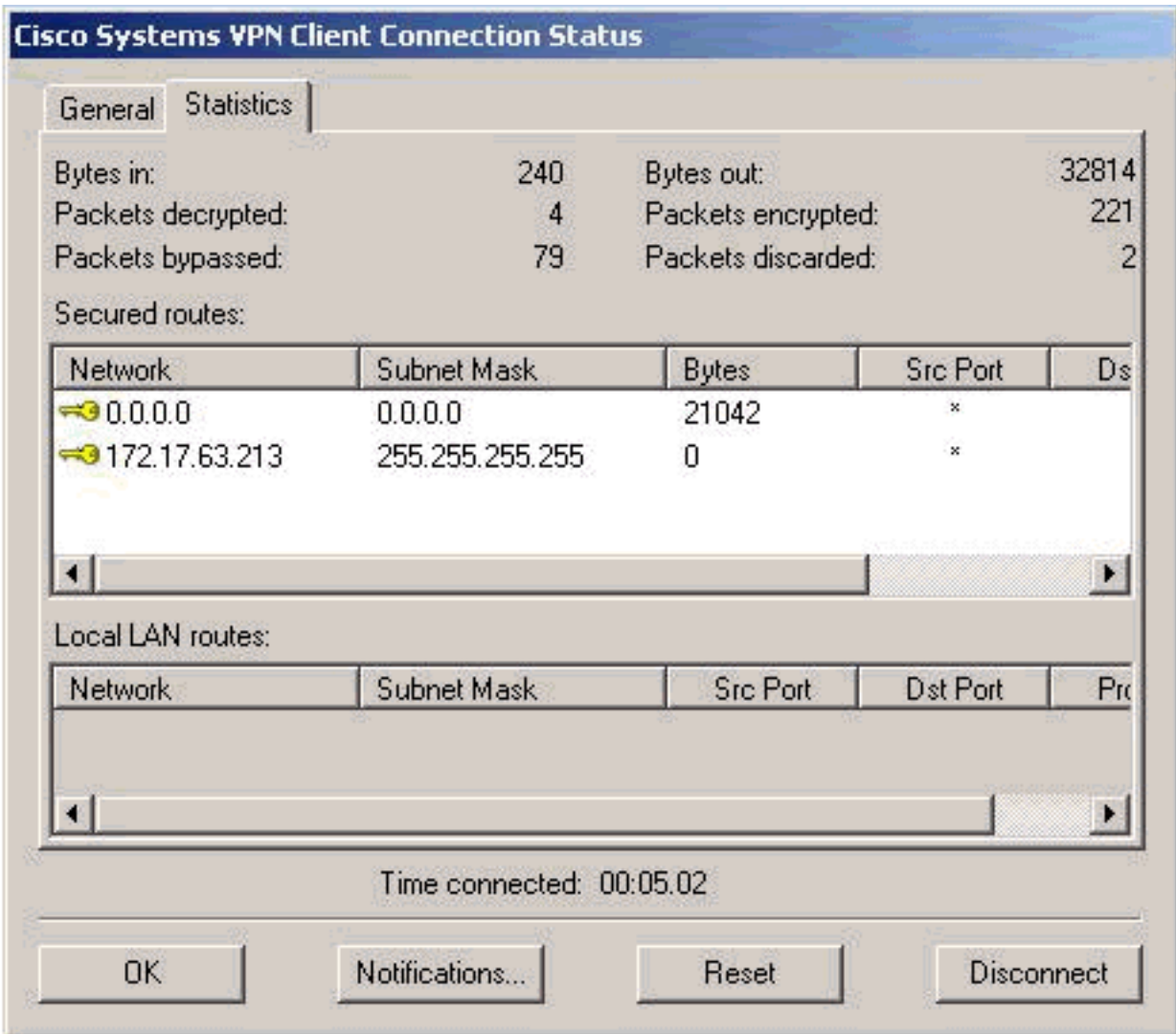
Die folgenden Schritte beschreiben die Konfiguration für den VPN-Client.

1. Doppelklicken Sie nach der Anmeldung beim VPN-Client auf das gelbe Vorhängeschloss in Ihrer Taskleiste, und melden Sie sich an, indem Sie **Connect**

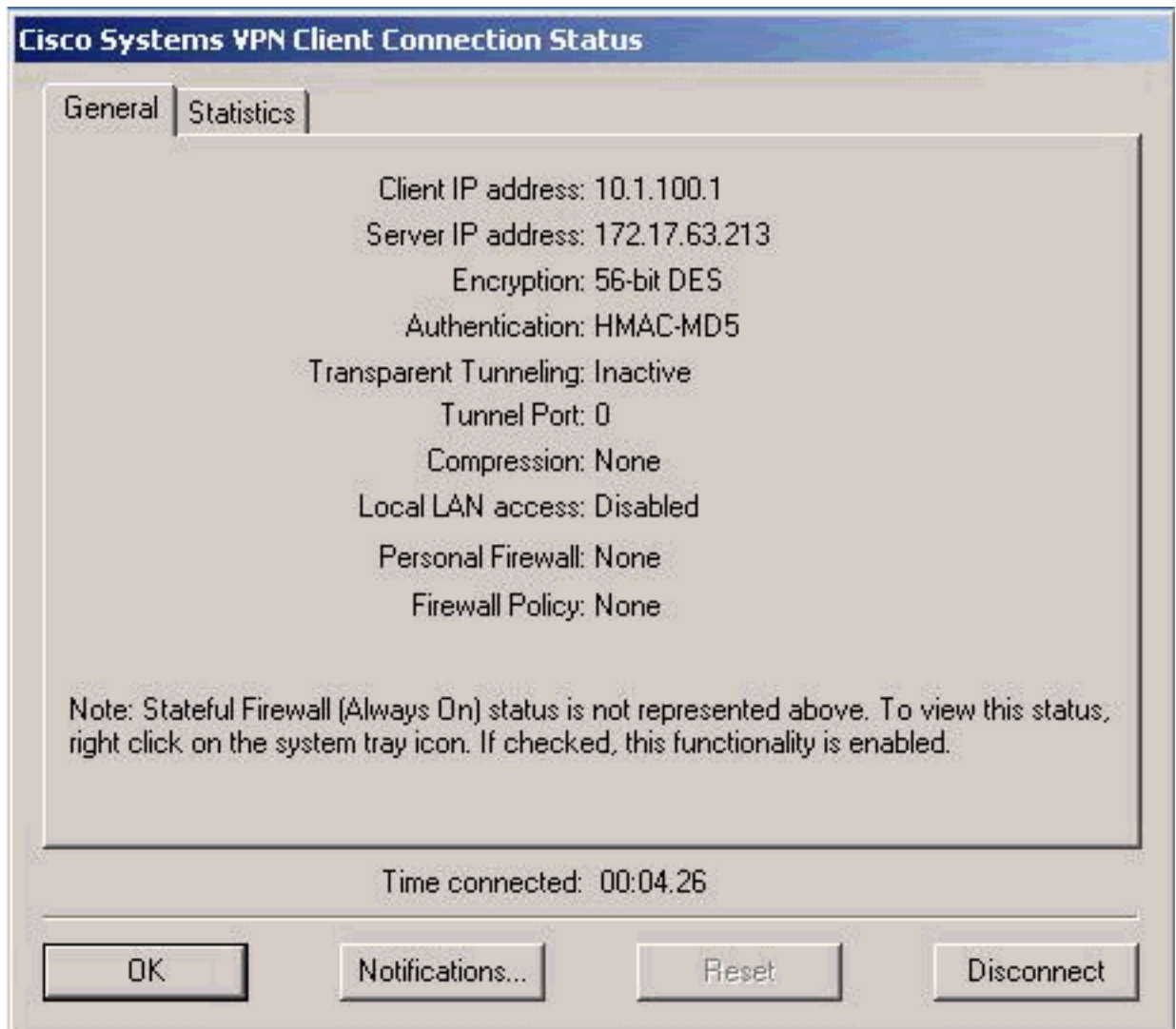


auswählen.

2. Um Verbindungsstatistiken anzuzeigen, doppelklicken Sie beim Herstellen des Tunnels auf das gelbe Vorhängeschloss, und der folgende Bildschirm wird angezeigt.



3. Wählen Sie die Registerkarte Allgemein für Konfigurationsinformationen des VPN-Clients



aus.

Remote Party Identity and Addressing

ID Type: IP Subnet
Subnet: 172.20.20.0
Mask: 255.255.255.0
Port: all

Connect Using Secure Gateway Tunnel - Checked

Type: IP Address
Address: 172.17.63.213

My Identity:

Preshared Key

Authentication (Phase I -- Proposal 1)

Authentication Method: Preshared Key
Encryption Algorithm: DES
Hash Algorithm: MD5
SALife: Unspecified
Key Group: Diffie-Hellmen 1

Key Exchange (PhaseII -- Proposal 1)

SALife: Unspecified
Encapsulation Protocol: ESP
Encryption Algorithm: DES

Hash Algorithm:
Encapsulation:

MD5
Tunnel

Überprüfen

Dieser Abschnitt enthält Informationen, mit denen Sie überprüfen können, ob Ihre Konfiguration ordnungsgemäß funktioniert.

Bestimmte **show**-Befehle werden vom [Output Interpreter Tool](#) unterstützt (nur [registrierte](#) Kunden), mit dem Sie eine Analyse der **show**-Befehlsausgabe anzeigen können.

Die **show**-Befehle können auf dem PIX und dem Router ausgeführt werden.

- **show crypto isakmp sa** - Zeigt Sicherheitszuordnungen für Phase 1 an.
- **show crypto ipsec sa** - Zeigt Sicherheitszuordnungen und Proxy-, Verschlüsselungs-, Entschlüsselungs-, Entschlüsselungs- und Entschlüsselungsinformationen in Phase 1 an.
- **show crypto engine connections active** - (nur Router) Zeigt aktuelle Verbindungen und Informationen über verschlüsselte und entschlüsselte Pakete

Fehlerbehebung

Dieser Abschnitt enthält Informationen zur Fehlerbehebung in Ihrer Konfiguration.

Bevor Sie einen der folgenden Debugbefehle ausprobieren, lesen Sie bitte [Wichtige Informationen über Debug-Befehle](#). Weitere Informationen finden Sie auch in den folgenden Debugausgaben.

- [Hub-PIX-Debugger](#)
- [Debugger für interne Router](#)
- [VPN-Clientprotokoll](#)

Das Löschen von Sicherheitszuordnungen muss auf beiden Peers erfolgen. Die PIX-Befehle werden im Konfigurationsmodus ausgeführt.

- **clear crypto isakmp sa** - (PIX) Löscht die Sicherheitszuordnungen für Phase 1.
- **clear crypto ipsec sa** - (PIX) Löscht die Sicherheitszuordnungen für Phase 2.
- **clear crypto isakmp** - (Router) Löscht die Sicherheitszuordnungen für Phase 1.
- **clear crypto sa** - (Router) Löscht die Sicherheitszuordnungen in Phase 2.

Die folgenden Debuggings müssen auf beiden IPSec-Peers ausgeführt werden.

- **debug crypto isakmp** - (Router und PIX) zeigt während Phase 1 Fehler an.
- **debug crypto ipsec** - (Router und PIX) zeigt während Phase 2 Fehler an.
- **debug crypto engine** - (nur Router) zeigt Informationen von der Crypto Engine an.

Hub-PIX-Debugger

```
HubPix(config)#  
crypto_isakmp_process_block: src 30.30.30.2, dest 172.17.63.213  
VPN Peer: ISAKMP: Added new peer: ip:30.30.30.2 Total VPN Peers:1  
VPN Peer: ISAKMP: Peer ip:30.30.30.2 Ref cnt incremented to:1  
Total VPN Peers:1
```

OAK_AG exchange

ISAKMP (0): processing SA payload. message ID = 0

ISAKMP (0): Checking ISAKMP transform 1 against priority 10 policy

ISAKMP: encryption 3DES-CBC

ISAKMP: hash SHA

ISAKMP: default group 2

ISAKMP: extended auth pre-share

ISAKMP: life type in seconds

ISAKMP: life duration (VPI) of 0x0 0x20 0xc4 0x9b

ISAKMP (0): atts are not acceptable. Next payload is 3

ISAKMP (0): Checking ISAKMP transform 2 against priority 10 policy

ISAKMP: encryption 3DES-CBC

ISAKMP: hash MD5

ISAKMP: default group 2

ISAKMP: extended auth pre-share

ISAKMP: life type in seconds

ISAKMP: life duration (VPI) of 0x0 0x20 0xc4 0x9b

ISAKMP (0): atts are not acceptable. Next payload is 3

ISAKMP (0): Checking ISAKMP transform 3 against priority 10 policy

ISAKMP: encryption 3DES-CBC

ISAKMP: hash SHA

ISAKMP: default group 2

ISAKMP: auth pre-share

ISAKMP: life type in seconds

ISAKMP: life duration (VPI) of 0x0 0x20 0xc4 0x9b

ISAKMP (0): atts are not acceptable. Next payload is 3

ISAKMP (0): Checking ISAKMP transform 4 against priority 10 policy

ISAKMP: encryption 3DES-CBC

ISAKMP: hash MD5

ISAKMP: default group 2

ISAKMP: auth pre-share

ISAKMP: life type in seconds

ISAKMP: life duration (VPI) of 0x0 0x20 0xc4 0x9b

ISAKMP (0): atts are not acceptable. Next payload is 3

ISAKMP (0): Checking ISAKMP transform 5 against priority 10 policy

ISAKMP: encryption DES-CBC

ISAKMP: hash SHA

ISAKMP: default group 2

ISAKMP: extended auth pre-share

ISAKMP: life type in seconds

ISAKMP: life duration (VPI) of 0x0 0x20 0xc4 0x9b

ISAKMP (0): atts are not acceptable. Next payload is 3

ISAKMP (0): Checking ISAKMP transform 6 against priority 10 policy

ISAKMP: encryption DES-CBC

ISAKMP: hash MD5

ISAKMP: default group 2

ISAKMP: extended auth pre-share

ISAKMP: life type in seconds

ISAKMP: life duration (VPI) of 0x0 0x20 0xc4 0x9b

ISAKMP (0): atts are acceptable. Next payload is 3

ISAKMP (0): processing KE payload. message ID = 0

ISAKMP (0): processing NONCE payload. message ID = 0

ISAKMP (0): processing ID payload. message ID = 0

ISAKMP (0): processing vendor id payload

ISAKMP (0): processing vendor id payload

ISAKMP (0): remote peer supports dead peer detection

ISAKMP (0): processing vendor id payload

```
ISAKMP (0): speaking to a Unity client

ISAKMP: Created a peer node for 30.30.30.2
ISAKMP (0): ID payload
    next-payload : 10
    type         : 1
    protocol     : 17
    port        : 500
    length      : 8
ISAKMP (0): Total payload length: 12
return status is IKMP_NO_ERROR
crypto_isakmp_process_block: src 30.30.30.2, dest 172.17.63.213
OAK_AG exchange
ISAKMP (0): processing HASH payload. message ID = 0
ISAKMP (0): processing NOTIFY payload 24578 protocol 1
    spi 0, message ID = 0
ISAKMP (0): processing notify INITIAL_CONTACT
IPSEC(key_engine): got a queue event...
IPSEC(key_engine_delete_sas): rec'd delete notify from ISAKMP
IPSEC(key_engine_delete_sas): delete all SAs shared with 30.30.30.2

ISAKMP (0): SA has been authenticated
return status is IKMP_NO_ERROR
ISAKMP/xauth: request attribute XAUTH_TYPE
ISAKMP/xauth: request attribute XAUTH_USER_NAME
ISAKMP/xauth: request attribute XAUTH_USER_PASSWORD
ISAKMP (0:0): initiating peer config to 30.30.30.2.
    ID = 1990788923 (0x76a9073b)
crypto_isakmp_process_block: src 30.30.30.2, dest 172.17.63.213
ISAKMP_TRANSACTION exchange
ISAKMP (0:0): processing transaction payload from 30.30.30.2. message ID = 76
ISAKMP: Config payload CFG_REPLY
return status is IKMP_ERR_NO_RETRANS
crypto_isakmp_process_block: src 30.30.30.2, dest 172.17.63.213
ISAKMP (0:0): phase 2 packet is a duplicate of a previous packet.
ISAKMP (0:0): initiating peer config to 30.30.30.2. ID = 167380747 (0x9fa070b)
crypto_isakmp_process_block: src 30.30.30.2, dest 172.17.63.213
ISAKMP_TRANSACTION exchange
ISAKMP (0:0): processing transaction payload from 30.30.30.2. message ID = 60
ISAKMP: Config payload CFG_ACK
return status is IKMP_NO_ERROR
crypto_isakmp_process_block: src 30.30.30.2, dest 172.17.63.213
ISAKMP_TRANSACTION exchange
ISAKMP (0:0): processing transaction payload from 30.30.30.2. message ID = 0
ISAKMP: Config payload CFG_REQUEST
ISAKMP (0:0): checking request:
ISAKMP: attribute IP4_ADDRESS (1)
ISAKMP: attribute IP4_NETMASK (2)
ISAKMP: attribute IP4_DNS (3)
ISAKMP: attribute IP4_NBNS (4)
ISAKMP: attribute ADDRESS_EXPIRY (5)
    Unsupported Attr: 5
ISAKMP: attribute APPLICATION_VERSION (7)
    Unsupported Attr: 7
ISAKMP: attribute UNKNOWN (28672)
    Unsupported Attr: 28672
ISAKMP: attribute UNKNOWN (28673)
    Unsupported Attr: 28673
ISAKMP: attribute UNKNOWN (28674)
ISAKMP: attribute UNKNOWN (28676)
ISAKMP: attribute UNKNOWN (28679)
    Unsupported Attr: 28679
ISAKMP: attribute UNKNOWN (28680)
    Unsupported Attr: 28680
```

```
ISAKMP: attribute UNKNOWN (28677)
        Unsupported Attr: 28677
ISAKMP (0:0): responding to peer config from 30.30.30.2. ID = 2994966739
return status is IKMP_NO_ERROR
crypto_isakmp_process_block: src 30.30.30.2, dest 172.17.63.213
OAK_QM exchange
oakley_process_quick_mode:
OAK_QM_IDLE
ISAKMP (0): processing SA payload. message ID = 2019793958

ISAKMP : Checking IPsec proposal 1

ISAKMP: transform 1, ESP_3DES
ISAKMP: attributes in transform:
ISAKMP: authenticator is HMAC-MD5
ISAKMP: encaps is 1
ISAKMP: SA life type in seconds
ISAKMP: SA life duration (VPI) of 0x0 0x20 0xc4 0x9b
IPSEC(validate_proposal): transform proposal
        (prot 3, trans 3, hmac_alg 1) not supported

ISAKMP (0): attrs not acceptable. Next payload is 0
ISAKMP (0): skipping next ANDED proposal (1)
ISAKMP : Checking IPsec proposal 2

ISAKMP: transform 1, ESP_3DES
ISAKMP: attributes in transform:
ISAKMP: authenticator is HMAC-SHA
ISAKMP: encaps is 1
ISAKMP: SA life type in seconds
ISAKMP: SA life duration (VPI) of 0x0 0x20 0xc4 0x9b
IPSEC(validate_proposal): transform proposal
        (prot 3, trans 3, hmac_alg 2) not supported

ISAKMP (0): attrs not acceptable. Next payload is 0
ISAKMP (0): skipping next ANDED proposal (2)
ISAKMP : Checking IPsec proposal 3

ISAKMP: transform 1, ESP_3DES
ISAKMP: attributes in transform:
ISAKMP: authenticator is HMAC-MD5
ISAKMP: encaps is 1
ISAKMP: SA life type in seconds
ISAKMP: SA life duration (VPI) of 0x0 0x20 0xc4 0x9b
IPSEC(validate_proposal): transform proposal
        (prot 3, trans 3, hmac_alg 1) not supported

ISAKMP (0): attrs not acceptable. Next payload is 0
ISAKMP : Checking IPsec proposal 4

ISAKMP: transform 1, ESP_3DES
ISAKMP: attributes in transform:
ISAKMP: authenticator is HMAC-SHA
ISAKMP: encaps is 1
ISAKMP: SA life type in seconds
ISAKMP: SA life duration (VPI) of 0x0 0x20 0xc4 0x9b
IPSEC(validate_proposal): transform proposal
        (prot 3, trans 3, hmac_alg 2) not supported

ISAKMP (0): attrs not acceptable. Next payload is 0
ISAKMP : Checking IPsec proposal 5

ISAKMP: transform 1, ESP_DES
ISAKMP: attributes in transform:
```

```
ISAKMP:      authenticator is HMAC-MD5
ISAKMP:      encaps is 1
ISAKMP:      SA life type in seconds
ISAKMP:      SA life duration (VPI) of  0x0 0x20 0xc4 0x9b
ISAKMP (0): atts are acceptable.
ISAKMP (0): bad SPI size of 2 octets!
ISAKMP : Checking IPsec proposal 6

ISAKMP: transform 1, ESP_DES
ISAKMP:  attributes in transform:
ISAKMP:      authenticator is HMAC-SHA
ISAKMP:      encaps is 1
ISAKMP:      SA life type in seconds
ISAKMP:      SA life duration (VPI) of  0x0 0x20 0xc4 0x9b
IPSEC(validate_proposal): transform proposal
    (prot 3, trans 2, hmac_alg 2) not supported

ISAKMP (0): atts not acceptable. Next payload is 0
ISAKMP (0): skipping next ANDED proposal (6)
ISAKMP : Checking IPsec proposal 7

ISAKMP: transform 1, ESP_DES
ISAKMP:  attributes in transform:
ISAKMP:      authenticator is HMAC-MD5
ISAKMP:      encaps is 1
ISAKMP:      SA life type in seconds
ISAKMP:      SA life duration (VPI) of  0x0 0x20 0xc4 0x9b
ISAKMP (0): atts are acceptable.
IPSEC(validate_proposal_request): proposal part #1,
    (key eng. msg.) dest= 172.17.63.213, src= 30.30.30.2,
    dest_proxy= 172.17.63.213/255.255.255.255/0/0 (type=1),
    src_proxy= 10.1.100.1/255.255.255.255/0/0 (type=1),
    protocol= ESP, transform= esp-des esp-md5-hmac ,
    lifedur= 0s and 0kb,
    spi= 0x0(0), conn_id= 0, keysize= 0, flags= 0x4

ISAKMP (0): processing NONCE payload. message ID = 2019793958

ISAKMP (0): processing ID payload. message ID = 2019793958
ISAKMP (0): ID_IPv4_ADDR src 10.1.100.1 prot 0 port 0
ISAKMP (0): processing ID payload. message ID = 2019793958
ISAKMP (0): ID_IPv4_ADDR dst 172.17.63.213 prot 0 port 0
IPSEC(key_engine): got a queue event...
IPSEC(spi_response): getting spi 0x91e92b8(152998584) for SA
    from 30.30.30.2 to 172.17.63.213 for prot 3

return status is IKMP_NO_ERROR
crypto_isakmp_process_block: src 30.30.30.2, dest 172.17.63.213
OAK_QM exchange
oakley_process_quick_mode:
OAK_QM_IDLE
ISAKMP (0): processing SA payload. message ID = 3584084796

ISAKMP : Checking IPsec proposal 1

ISAKMP: transform 1, ESP_3DES
ISAKMP:  attributes in transform:
ISAKMP:      authenticator is HMAC-MD5
crypto_isakmp_process_block: src 30.30.30.2, dest 172.17.63.213
OAK_QM exchange
oakley_process_quick_mode:
OAK_QM_AUTH_AWAITmap_alloc_entry: allocating entry 6
map_alloc_entry: allocating entry 5
```

```
ISAKMP (0): Creating IPsec SAs
  inbound SA from 30.30.30.2 to 172.17.63.213
  (proxy 10.1.100.1 to 172.17.63.213)
  has spi 152998584 and conn_id 6 and flags 4
  lifetime of 2147483 seconds
  outbound SA from 172.17.63.213 to 30.30.30.2
  (proxy 172.17.63.213 to 10.1.100.1)
  has spi 2121955223 and conn_id 5 and flags 4
  lifetime of 2147483 seconds
IPSEC(key_engine): got a queue event...
IPSEC(initialize_sas): ,
  (key eng. msg.) dest= 172.17.63.213, src= 30.30.30.2,
  dest_proxy= 172.17.63.213/0.0.0.0/0/0 (type=1),
  src_proxy= 10.1.100.1/0.0.0.0/0/0 (type=1),
  protocol= ESP, transform= esp-des esp-md5-hmac ,
  lifedur= 2147483s and 0kb,
  spi= 0x91e92b8(152998584), conn_id= 6, keysize= 0, flags= 0x4
IPSEC(initialize_sas): ,
  (key eng. msg.) src= 172.17.63.213, dest= 30.30.30.2,
  src_proxy= 172.17.63.213/0.0.0.0/0/0 (type=1),
  dest_proxy= 10.1.100.1/0.0.0.0/0/0 (type=1),
  protocol= ESP, transform= esp-des esp-md5-hmac ,
  lifedur= 2147483s and 0kb,
  spi= 0x7e7a7797(2121955223), conn_id= 5, keysize= 0, flags= 0x4

VPN Peer: IPSEC: Peer ip:30.30.30.2 Ref cnt incremented to:2
  Total VPN Peers:1
VPN Peer: IPSEC: Peer ip:30.30.30.2 Ref cnt incremented to:3
  Total VPN Peers:1
return status is IKMP_NO_ERROR
crypto_isakmp_process_block: src 30.30.30.2, dest 172.17.63.213
OAK_QM exchange
oakley_process_quick_mode:
OAK_QM_AUTH_AWAITmap_alloc_entry: allocating entry 4
map_alloc_entry: allocating entry 3

ISAKMP (0): Creating IPsec SAs
  inbound SA from 30.30.30.2 to 172.17.63.213
  (proxy 10.1.100.1 to 0.0.0.0)
  has spi 3202697335 and conn_id 4 and flags 4
  lifetime of 2147483 seconds
  outbound SA from 172.17.63.213 to 30.30.30.2
  (proxy 0.0.0.0 to 10.1.100.1)
  has spi 771522089 and conn_id 3 and flags 4
  lifetime of 2147483 seconds
IPSEC(key_engine): got a queue event...
IPSEC(initialize_sas): ,
  (key eng. msg.) dest= 172.17.63.213, src= 30.30.30.2,
  dest_proxy= 0.0.0.0/0.0.0.0/0/0 (type=4),
  src_proxy= 10.1.100.1/0.0.0.0/0/0 (type=1),
  protocol= ESP, transform= esp-des esp-md5-hmac ,
  lifedur= 2147483s and 0kb,
  spi= 0xbec54877(3202697335), conn_id= 4, keysize= 0, flags= 0x4
IPSEC(initialize_sas): ,
  (key eng. msg.) src= 172.17.63.213, dest= 30.30.30.2,
  src_proxy= 0.0.0.0/0.0.0.0/0/0 (type=4),
  dest_proxy= 10.1.100.1/0.0.0.0/0/0 (type=1),
  protocol= ESP, transform= esp-des esp-md5-hmac ,
  lifedur= 2147483s and 0kb,
  spi= 0x2dfc7e29(771522089), conn_id= 3, keysize= 0, flags= 0x4

VPN Peer: IPSEC: Peer ip:30.30.30.2 Ref cnt incremented to:4
  Total VPN Peers:1
VPN Peer: IPSEC: Peer ip:30.30.30.2 Ref cnt incremented to:5
```

```
Total VPN Peers:1
return status is IKMP_NO_ERROR
VPN Peer: ISAKMP: Added new peer: ip:172.17.63.229 Total VPN Peers:2
VPN Peer: ISAKMP: Peer ip:172.17.63.229 Ref cnt incremented to:1
Total VPN Peers:2
ISAKMP (0): beginning Main Mode exchange

crypto_isakmp_process_block: src 172.17.63.229, dest 172.17.63.230
OAK_MM exchange
ISAKMP (0): processing SA payload. message ID = 0

ISAKMP (0): Checking ISAKMP transform 1 against priority 10 policy
ISAKMP:      encryption DES-CBC
ISAKMP:      hash MD5
ISAKMP:      default group 2
ISAKMP:      auth pre-share
ISAKMP (0): atts are acceptable. Next payload is 0
ISAKMP (0): SA is doing pre-shared key authentication using
      id type ID_IPV4_ADDR
return status is IKMP_NO_ERROR
crypto_isakmp_process_block: src 172.17.63.229, dest 172.17.63.230
OAK_MM exchange
ISAKMP (0): processing KE payload. message ID = 0

ISAKMP (0): processing NONCE payload. message ID = 0

ISAKMP (0): processing vendor id payload

ISAKMP (0): processing vendor id payload

ISAKMP (0): remote peer supports dead peer detection

ISAKMP (0): processing vendor id payload

ISAKMP (0): speaking to another IOS box!

ISAKMP (0): processing vendor id payload

ISAKMP (0): ID payload
      next-payload : 8
      type          : 1
      protocol      : 17
      port          : 500
      length        : 8
ISAKMP (0): Total payload length: 12
return status is IKMP_NO_ERROR
crypto_isakmp_process_block: src 30.30.30.2, dest 172.17.63.213
ISAKMP (0): processing NOTIFY payload 36136 protocol 1
      spi 0, message ID = 409920160
ISAKMP (0): received DPD_R_U_THERE from peer 30.30.30.2
ISAKMP (0): sending NOTIFY message 36137 protocol 1
return status is IKMP_NO_ERR_NO_TRANS
crypto_isakmp_process_block: src 172.17.63.229, dest 172.17.63.230
OAK_MM exchange
ISAKMP (0): processing ID payload. message ID = 0
ISAKMP (0): processing HASH payload. message ID = 0
ISAKMP (0): SA has been authenticated

ISAKMP (0): beginning Quick Mode exchange, M-ID of -498320091:e24c3d25
IPSEC(key_engine): got a queue event...
IPSEC(spi_response): getting spi 0xcad23b33(3402775347) for SA
      from 172.17.63.229 to 172.17.63.230 for prot 3

return status is IKMP_NO_ERROR
```



```
ISAKMP (0): sending INITIAL_CONTACT notify
crypto_isakmp_process_block: src 172.17.63.229, dest 172.17.63.230
OAK_QM exchange
oakley_process_quick_mode:
OAK_QM_IDLE
ISAKMP (0): processing SA payload. message ID = 3796647205

ISAKMP : Checking IPsec proposal 1

ISAKMP: transform 1, ESP_DES
ISAKMP:  attributes in transform:
ISAKMP:  encaps is 1
ISAKMP:  SA life type in seconds
ISAKMP:  SA life duration (basic) of 28800
ISAKMP:  SA life type in kilobytes
ISAKMP:  SA life duration (VPI) of 0x0 0x46 0x50 0x0
ISAKMP:  authenticator is HMAC-MD5
ISAKMP (0): atts are acceptable.
IPSEC(validate_proposal_request): proposal part #1,
(key eng. msg.) dest= 172.17.63.229, src= 172.17.63.230,
dest_proxy= 172.20.20.0/255.255.255.0/0/0 (type=4),
src_proxy= 10.1.100.0/255.255.255.0/0/0 (type=4),
protocol= ESP, transform= esp-des esp-md5-hmac ,
lifedur= 0s and 0kb,
spi= 0x0(0), conn_id= 0, keysize= 0, flags= 0x4

ISAKMP (0): processing NONCE payload. message ID = 3796647205

ISAKMP (0): processing ID payload. message ID = 3796647205
ISAKMP (0): processing ID payload. message ID = 3796647205
ISAKMP (0): processing NOTIFY payload 24576 protocol 3
spi 691534456, message ID = 3796647205
ISAKMP (0): processing responder lifetime
ISAKMP (0): responder lifetime of 3600smap_alloc_entry: allocating entry 8
map_alloc_entry: allocating entry 7

ISAKMP (0): Creating IPsec SAs
inbound SA from 172.17.63.229 to 172.17.63.230
(proxy 172.20.20.0 to 10.1.100.0)
has spi 3402775347 and conn_id 8 and flags 4
lifetime of 3600 seconds
lifetime of 4608000 kilobytes
outbound SA from 172.17.63.230 to 172.17.63.229
(proxy 10.1.100.0 to 172.20.20.0)
has spi 691534456 and conn_id 7 and flags 4
lifetime of 3600 seconds
lifetime of 4608000 kilobytes
IPSEC(key_engine): got a queue event...
IPSEC(initialize_sas): ,
(key eng. msg.) dest= 172.17.63.230, src= 172.17.63.229,
dest_proxy= 10.1.100.0/255.255.255.0/0/0 (type=4),
src_proxy= 172.20.20.0/255.255.255.0/0/0 (type=4),
protocol= ESP, transform= esp-des esp-md5-hmac ,
lifedur= 3600s and 4608000kb,
spi= 0xcad23b33(3402775347), conn_id= 8, keysize= 0, flags= 0x4
IPSEC(initialize_sas): ,
(key eng. msg.) src= 172.17.63.230, dest= 172.17.63.229,
src_proxy= 10.1.100.0/255.255.255.0/0/0 (type=4),
dest_proxy= 172.20.20.0/255.255.255.0/0/0 (type=4),
protocol= ESP, transform= esp-des esp-md5-hmac ,
lifedur= 3600s and 4608000kb,
spi= 0x2937fa78(691534456), conn_id= 7, keysize= 0, flags= 0x4

VPN Peer: IPSEC: Peer ip:172.17.63.229 Ref cnt incremented to:2
```

```
Total VPN Peers:2
VPN Peer: IPSEC: Peer ip:172.17.63.229 Ref cnt incremented to:3
Total VPN Peers:2
return status is IKMP_NO_ERROR
HubPix(config)#
HubPix(config)#
crypto_isakmp_process_block: src 30.30.30.2, dest 172.17.63.213
ISAKMP (0): processing NOTIFY payload 36136 protocol 1
    spi 0, message ID = 2020571710
ISAKMP (0): received DPD_R_U_THERE from peer 30.30.30.2
ISAKMP (0): sending NOTIFY message 36137 protocol 1
return status is IKMP_NO_ERR_NO_TRANS
HubPix(config)#
```

Debugger für interne Router

```
inside#
01:45:06: ISAKMP (0:0): received packet from 172.17.63.230 (N) NEW SA
01:45:06: ISAKMP: local port 500, remote port 500
01:45:06: ISAKMP (0:1): Input = IKE_MSG_FROM_PEER, IKE_MM_EXCH
Old State = IKE_READY New State = IKE_R_MM1

01:45:06: ISAKMP (0:1): processing SA payload. message ID = 0
01:45:06: ISAKMP (0:1): found peer pre-shared key matching 172.17.63.230
01:45:06: ISAKMP (0:1): Checking ISAKMP transform 1 against priority 10 policy
01:45:06: ISAKMP: encryption DES-CBC
01:45:06: ISAKMP: hash MD5
01:45:06: ISAKMP: default group 2
01:45:06: ISAKMP: auth pre-share
01:45:06: ISAKMP (0:1): atts are acceptable. Next payload is 0
01:45:06: CryptoEngine0: generate alg parameter
01:45:06: CryptoEngine0: CRYPTO_ISA_DH_CREATE(hw)(ipsec)
01:45:06: CRYPTO_ENGINE: Dh phase 1 status: 0
01:45:06: ISAKMP (0:1): Input = IKE_MSG_INTERNAL, IKE_PROCESS_MAIN_MODE
Old State = IKE_R_MM1 New State = IKE_R_MM1

01:45:06: ISAKMP (0:1): sending packet to 172.17.63.230 (R) MM_SA_SETUP
01:45:06: ISAKMP (0:1): Input = IKE_MSG_INTERNAL, IKE_PROCESS_COMPLETE
Old State = IKE_R_MM1 New State = IKE_R_MM2

01:45:06: ISAKMP (0:1): received packet from 172.17.63.230 (R) MM_SA_SETUP
01:45:06: ISAKMP (0:1): Input = IKE_MSG_FROM_PEER, IKE_MM_EXCH
Old State = IKE_R_MM2 New State = IKE_R_MM3

01:45:06: ISAKMP (0:1): processing KE payload. message ID = 0
01:45:06: CryptoEngine0: generate alg parameter
01:45:06: CryptoEngine0: CRYPTO_ISA_DH_SHARE_SECRET(hw)(ipsec)
01:45:07: ISAKMP (0:1): processing NONCE payload. message ID = 0
01:45:07: ISAKMP (0:1): found peer pre-shared key matching 172.17.63.230
01:45:07: CryptoEngine0: create ISAKMP SKEYID for conn id 1
01:45:07: CryptoEngine0: CRYPTO_ISA_SA_CREATE(hw)(ipsec)
01:45:07: ISAKMP (0:1): SKEYID state generated
01:45:07: ISAKMP (0:1): processing vendor id payload
01:45:07: ISAKMP (0:1): vendor ID is Unity
01:45:07: ISAKMP (0:1): processing vendor id payload
01:45:07: ISAKMP (0:1): vendor ID is DPD
01:45:07: ISAKMP (0:1): processing vendor id payload
01:45:07: ISAKMP (0:1): speaking to another IOS box!
01:45:07: ISAKMP (0:1): Input = IKE_MSG_INTERNAL, IKE_PROCESS_MAIN_MODE
Old State = IKE_R_MM3 New State = IKE_R_MM3

01:45:07: ISAKMP (0:1): sending packet to 172.17.63.230 (R) MM_KEY_EXCH
01:45:07: ISAKMP (0:1): Input = IKE_MSG_INTERNAL, IKE_PROCESS_COMPLETE
```

Old State = IKE_R_MM3 New State = IKE_R_MM4

01:45:07: ISAKMP (0:1): received packet from 172.17.63.230 (R) MM_KEY_EXCH
01:45:07: CryptoEngine0: CRYPTO_ISA_IKE_DECRYPT(hw)(ipsec)
01:45:07: ISAKMP (0:1): Input = IKE_MSG_FROM_PEER, IKE_MM_EXCH
Old State = IKE_R_MM4 New State = IKE_R_MM5

01:45:07: ISAKMP (0:1): processing ID payload. message ID = 0
01:45:07: ISAKMP (0:1): processing HASH payload. message ID = 0
01:45:07: CryptoEngine0: generate hmac context for conn id 1
01:45:07: CryptoEngine0: CRYPTO_ISA_IKE_HMAC(hw)(ipsec)
01:45:07: ISAKMP (0:1): SA has been authenticated with 172.17.63.230
01:45:07: ISAKMP (0:1): Input = IKE_MSG_INTERNAL, IKE_PROCESS_MAIN_MODE
Old State = IKE_R_MM5 New State = IKE_R_MM5

01:45:07: ISAKMP (0:1): SA is doing pre-shared key authentication using
id type ID_IPV4_ADDR

01:45:07: ISAKMP (1): ID payload
next-payload : 8
type : 1
protocol : 17
port : 500
length : 8

01:45:07: ISAKMP (1): Total payload length: 12
01:45:07: CryptoEngine0: generate hmac context for conn id 1
01:45:07: CryptoEngine0: CRYPTO_ISA_IKE_HMAC(hw)(ipsec)
01:45:07: CryptoEngine0: clear dh number for conn id 1
01:45:07: CryptoEngine0: CRYPTO_ISA_DH_DELETE(hw)(ipsec)
01:45:07: CryptoEngine0: CRYPTO_ISA_IKE_ENCRYPT(hw)(ipsec)
01:45:07: ISAKMP (0:1): sending packet to 172.17.63.230 (R) QM_IDLE
01:45:07: ISAKMP (0:1): Input = IKE_MSG_INTERNAL, IKE_PROCESS_COMPLETE
Old State = IKE_R_MM5 New State = IKE_P1_COMPLETE

01:45:07: ISAKMP (0:1): Input = IKE_MSG_INTERNAL, IKE_PHASE1_COMPLETE
Old State = IKE_P1_COMPLETE New State = IKE_P1_COMPLETE

01:45:08: ISAKMP (0:1): received packet from 172.17.63.230 (R) QM_IDLE
01:45:08: CryptoEngine0: CRYPTO_ISA_IKE_DECRYPT(hw)(ipsec)
01:45:08: CryptoEngine0: generate hmac context for conn id 1
01:45:08: CryptoEngine0: CRYPTO_ISA_IKE_HMAC(hw)(ipsec)
01:45:08: ISAKMP (0:1): processing HASH payload. message ID = -498320091
01:45:08: ISAKMP (0:1): processing SA payload. message ID = -498320091
01:45:08: ISAKMP (0:1): Checking IPsec proposal 1
01:45:08: ISAKMP: transform 1, ESP_DES
01:45:08: ISAKMP: attributes in transform:
01:45:08: ISAKMP: encaps is 1
01:45:08: ISAKMP: SA life type in seconds
01:45:08: ISAKMP: SA life duration (basic) of 28800
01:45:08: ISAKMP: SA life type in kilobytes
01:45:08: ISAKMP: SA life duration (VPI) of 0x0 0x46 0x50 0x0
01:45:08: ISAKMP: authenticator is HMAC-MD5
01:45:08: validate proposal 0
01:45:08: ISAKMP (0:1): atts are acceptable.
01:45:08: IPSEC(validate_proposal_request): proposal part #1,
(key eng. msg.) INBOUND local= 172.17.63.229, remote= 172.17.63.230,
local_proxy= 172.20.20.0/255.255.255.0/0/0 (type=4),
remote_proxy= 10.1.100.0/255.255.255.0/0/0 (type=4),
protocol= ESP, transform= esp-des esp-md5-hmac ,
lifedur= 0s and 0kb,
spi= 0x0(0), conn_id= 0, keysize= 0, flags= 0x4
01:45:08: validate proposal request 0
01:45:08: ISAKMP (0:1): processing NONCE payload. message ID = -498320091
01:45:08: ISAKMP (0:1): processing ID payload. message ID = -498320091
01:45:08: ISAKMP (0:1): processing ID payload. message ID = -498320091

01:45:08: ISAKMP (0:1): processing NOTIFY INITIAL_CONTACT protocol 1
spi 0, message ID = -498320091, sa = 62EF984C
01:45:08: ISAKMP (0:1): Process initial contact,
bring down existing phase 1 and 2 SA's
01:45:08: ISAKMP (0:1): peer does not do paranoid keepalives.

01:45:08: ISAKMP (0:1): asking for 1 spis from ipsec
01:45:08: ISAKMP (0:1): Node -498320091,
Input = IKE_MESG_FROM_PEER, IKE_QM_EXCH
Old State = IKE_QM_READY New State = IKE_QM_SPI_STARVE

01:45:08: IPSEC(key_engine): got a queue event...
01:45:08: IPSEC(key_engine_delete_sas): rec'd delete notify from ISAKMP
01:45:08: IPSEC(key_engine_delete_sas): delete all SAs shared
with 172.17.63.230
01:45:08: IPSEC(key_engine): got a queue event...
01:45:08: IPSEC(spi_response): getting spi 691534456 for SA
from 172.17.63.229 to 172.17.63.230 for prot 3
01:45:08: ISAKMP: received ke message (2/1)
01:45:08: CryptoEngine0: generate hmac context for conn id 1
01:45:08: CryptoEngine0: CRYPTO_ISA_IKE_HMAC(hw)(ipsec)
01:45:08: CryptoEngine0: CRYPTO_ISA_IKE_ENCRYPT(hw)(ipsec)
01:45:08: ISAKMP (0:1): sending packet to 172.17.63.230 (R) QM_IDLE
01:45:08: ISAKMP (0:1): Node -498320091,
Input = IKE_MESG_FROM_IPSEC, IKE_SPI_REPLY
Old State = IKE_QM_SPI_STARVE New State = IKE_QM_R_QM2

01:45:09: ISAKMP (0:1): received packet from 172.17.63.230 (R) QM_IDLE
01:45:09: CryptoEngine0: CRYPTO_ISA_IKE_DECRYPT(hw)(ipsec)
01:45:09: CryptoEngine0: generate hmac context for conn id 1
01:45:09: CryptoEngine0: CRYPTO_ISA_IKE_HMAC(hw)(ipsec)
01:45:09: ipsec allocate flow 0
01:45:09: ipsec allocate flow 0
01:45:09: CryptoEngine0: CRYPTO_ISA_IPSEC_KEY_CREATE(hw)(ipsec)
01:45:09: CryptoEngine0: CRYPTO_ISA_IPSEC_KEY_CREATE(hw)(ipsec)
01:45:09: ISAKMP (0:1): Creating IPsec SAs
01:45:09: inbound SA from 172.17.63.230 to 172.17.63.229
(proxy 10.1.100.0 to 172.20.20.0)
01:45:09: has spi 0x2937FA78 and conn_id 2029 and flags 4
01:45:09: lifetime of 28800 seconds
01:45:09: lifetime of 4608000 kilobytes
01:45:09: outbound SA from 172.17.63.229 to 172.17.63.230
(proxy 172.20.20.0 to 10.1.100.0)
01:45:09: has spi -892191949 and conn_id 2030 and flags C
01:45:09: lifetime of 28800 seconds
01:45:09: lifetime of 4608000 kilobytes
01:45:09: ISAKMP (0:1): deleting node -498320091 error FALSE
reason "quick mode done (await())"
01:45:09: ISAKMP (0:1): Node -498320091,
Input = IKE_MESG_FROM_PEER, IKE_QM_EXCH
Old State = IKE_QM_R_QM2 New State = IKE_QM_PHASE2_COMPLETE

01:45:09: IPSEC(key_engine): got a queue event...
01:45:09: IPSEC(initialize_sas): ,
(key eng. msg.) INBOUND local= 172.17.63.229, remote= 172.17.63.230,
local_proxy= 172.20.20.0/255.255.255.0/0/0 (type=4),
remote_proxy= 10.1.100.0/255.255.255.0/0/0 (type=4),
protocol= ESP, transform= esp-des esp-md5-hmac ,
lifedur= 28800s and 4608000kb,
spi= 0x2937FA78(691534456), conn_id= 2029, keysize= 0, flags= 0x4
01:45:09: IPSEC(initialize_sas): ,
(key eng. msg.) OUTBOUND local= 172.17.63.229, remote= 172.17.63.230,
local_proxy= 172.20.20.0/255.255.255.0/0/0 (type=4),
remote_proxy= 10.1.100.0/255.255.255.0/0/0 (type=4),

```
protocol= ESP, transform= esp-des esp-md5-hmac ,
lifedur= 28800s and 4608000kb,
spi= 0xCAD23B33(3402775347), conn_id= 2030, keysize= 0, flags= 0xC
01:45:09: IPSEC(create_sa): sa created,
(sa) sa_dest= 172.17.63.229, sa_prot= 50,
sa_spi= 0x2937FA78(691534456),
sa_trans= esp-des esp-md5-hmac , sa_conn_id= 2029
01:45:09: IPSEC(create_sa): sa created,
(sa) sa_dest= 172.17.63.230, sa_prot= 50,
sa_spi= 0xCAD23B33(3402775347),
sa_trans= esp-des esp-md5-hmac , sa_conn_id= 2030
inside#
```

VPN-Clientprotokoll

```
1679 13:21:53.420 04/13/02 Sev=Info/6 DIALER/0x63300002
Initiating connection.

1680 13:21:53.420 04/13/02 Sev=Info/4 CM/0x63100002
Begin connection process

1681 13:21:53.430 04/13/02 Sev=Info/4 CM/0x63100004
Establish secure connection using Ethernet

1682 13:21:53.430 04/13/02 Sev=Info/4 CM/0x63100026
Attempt connection with server "172.17.63.213"

1683 13:21:53.430 04/13/02 Sev=Info/6 IKE/0x6300003B
Attempting to establish a connection with 172.17.63.213.

1684 13:21:53.470 04/13/02 Sev=Info/4 IKE/0x63000013
SENDING >>> ISAKMP OAK AG (SA, KE, NON, ID, VID, VID, VID)
to 172.17.63.213

1685 13:21:53.671 04/13/02 Sev=Info/5 IKE/0x6300002F
Received ISAKMP packet: peer = 172.17.63.213

1686 13:21:53.671 04/13/02 Sev=Info/4 IKE/0x63000014
RECEIVING <<< ISAKMP OAK AG (SA, VID, VID, VID, KE, ID, NON, HASH)
from 172.17.63.213

1687 13:21:53.671 04/13/02 Sev=Info/5 IKE/0x63000059
Vendor ID payload = 12F5F28C457168A9702D9FE274CC0100

1688 13:21:53.671 04/13/02 Sev=Info/5 IKE/0x63000001
Peer is a Cisco-Unity compliant peer

1689 13:21:53.671 04/13/02 Sev=Info/5 IKE/0x63000059
Vendor ID payload = AFCAD71368A1F1C96B8696FC77570100

1690 13:21:53.671 04/13/02 Sev=Info/5 IKE/0x63000001
Peer supports DPD

1691 13:21:53.671 04/13/02 Sev=Info/5 IKE/0x63000059
Vendor ID payload = 4565726A4035E50EA2133A5813561EF2

1692 13:21:53.701 04/13/02 Sev=Info/4 IKE/0x63000013
SENDING >>> ISAKMP OAK AG *(HASH, NOTIFY:STATUS_INITIAL_CONTACT)
to 172.17.63.213

1693 13:21:54.071 04/13/02 Sev=Info/4 IPSEC/0x63700014
Deleted all keys
```

1694 13:21:56.725 04/13/02 Sev=Info/5 IKE/0x6300002F
Received ISAKMP packet: peer = 172.17.63.213

1695 13:21:56.725 04/13/02 Sev=Info/4 IKE/0x63000014
RECEIVING <<< ISAKMP OAK TRANS *(HASH, ATTR) from 172.17.63.213

1696 13:21:56.725 04/13/02 Sev=Info/4 CM/0x63100015
Launch xAuth application

1697 13:22:05.187 04/13/02 Sev=Info/4 CM/0x63100017
xAuth application returned

1698 13:22:05.187 04/13/02 Sev=Info/4 IKE/0x63000013
SENDING >>> ISAKMP OAK TRANS *(HASH, ATTR) to 172.17.63.213

1699 13:22:10.214 04/13/02 Sev=Info/4 IKE/0x63000056
Phase 2 exchange timed out (message id = 0x76A9073B). Retry count: 1

1700 13:22:10.214 04/13/02 Sev=Info/4 IKE/0x63000013
SENDING >>> ISAKMP OAK TRANS *(Retransmission) to 172.17.63.213

1701 13:22:10.654 04/13/02 Sev=Info/5 IKE/0x6300002F
Received ISAKMP packet: peer = 172.17.63.213

1702 13:22:10.654 04/13/02 Sev=Info/4 IKE/0x63000014
RECEIVING <<< ISAKMP OAK TRANS *(HASH, ATTR) from 172.17.63.213

1703 13:22:10.654 04/13/02 Sev=Info/4 CM/0x6310000E
Established Phase 1 SA. 1 Phase 1 SA in the system

1704 13:22:10.665 04/13/02 Sev=Info/4 IKE/0x63000013
SENDING >>> ISAKMP OAK TRANS *(HASH, ATTR) to 172.17.63.213

1705 13:22:10.675 04/13/02 Sev=Info/5 IKE/0x6300005D
Client sending a firewall request to concentrator

1706 13:22:10.675 04/13/02 Sev=Info/5 IKE/0x6300005C
Firewall Policy: Product=Cisco Integrated Client,
Capability= (Centralized Policy Push).

1707 13:22:10.675 04/13/02 Sev=Info/4 IKE/0x63000013
SENDING >>> ISAKMP OAK TRANS *(HASH, ATTR) to 172.17.63.213

1708 13:22:10.735 04/13/02 Sev=Info/5 IKE/0x6300002F
Received ISAKMP packet: peer = 172.17.63.213

1709 13:22:10.735 04/13/02 Sev=Info/4 IKE/0x63000014
RECEIVING <<< ISAKMP OAK TRANS *(HASH, ATTR) from 172.17.63.213

1710 13:22:10.735 04/13/02 Sev=Info/5 IKE/0x63000010
MODE_CFG_REPLY: Attribute = INTERNAL_IPV4_ADDRESS: , value = 10.1.100.1

1711 13:22:10.735 04/13/02 Sev=Info/5 IKE/0x63000010
MODE_CFG_REPLY: Attribute = INTERNAL_IPV4_DNS(1): , value = 172.20.20.2

1712 13:22:10.735 04/13/02 Sev=Info/5 IKE/0x63000010
MODE_CFG_REPLY: Attribute = INTERNAL_IPV4_NBNS(1) (a.k.a. WINS) : ,
value = 172.20.20.2

1713 13:22:10.735 04/13/02 Sev=Info/5 IKE/0x6300000E
MODE_CFG_REPLY: Attribute = MODECFG_UNITY_DEFDOMAIN: , value = cisco.com

1714 13:22:10.735 04/13/02 Sev=Info/4 CM/0x63100019

Mode Config data received

1715 13:22:10.755 04/13/02 Sev=Info/5 IKE/0x63000055
Received a key request from Driver for IP address 172.17.63.213,
GW IP = 172.17.63.213

1716 13:22:10.755 04/13/02 Sev=Info/4 IKE/0x63000013
SENDING >>> ISAKMP OAK QM *(HASH, SA, NON, ID, ID) to 172.17.63.213

1717 13:22:10.755 04/13/02 Sev=Info/5 IKE/0x63000055
Received a key request from Driver for IP address 10.10.10.255,
GW IP = 172.17.63.213

1718 13:22:10.755 04/13/02 Sev=Info/4 IKE/0x63000013
SENDING >>> ISAKMP OAK QM *(HASH, SA, NON, ID, ID) to 172.17.63.213

1719 13:22:11.115 04/13/02 Sev=Info/4 IPSEC/0x63700014
Deleted all keys

1720 13:22:11.616 04/13/02 Sev=Info/5 IKE/0x63000055
Received a key request from Driver for IP address 144.254.6.77,
GW IP = 172.17.63.213

1721 13:22:11.616 04/13/02 Sev=Warning/3 IKE/0xE3000002
Function initialize_qm failed with an error code
of 0x00000000(INITIATE:811)

1722 13:22:12.097 04/13/02 Sev=Info/5 IKE/0x6300002F
Received ISAKMP packet: peer = 172.17.63.213

1723 13:22:12.097 04/13/02 Sev=Info/4 IKE/0x63000014
RECEIVING <<< ISAKMP OAK QM *(HASH, SA, NON, ID, ID,
NOTIFY:STATUS_RESP_LIFETIME) from 172.17.63.213

1724 13:22:12.097 04/13/02 Sev=Info/5 IKE/0x63000044
RESPONDER-LIFETIME notify has value of 28800 seconds

1725 13:22:12.097 04/13/02 Sev=Info/5 IKE/0x63000045
RESPONDER-LIFETIME notify has value of 4608000 kb

1726 13:22:12.097 04/13/02 Sev=Info/4 IKE/0x63000013
SENDING >>> ISAKMP OAK QM *(HASH) to 172.17.63.213

1727 13:22:12.097 04/13/02 Sev=Info/5 IKE/0x63000058
Loading IPsec SA (Message ID = 0x78639C26 OUTBOUND SPI = 0x091E92B8
INBOUND SPI = 0x7E7A7797)

1728 13:22:12.097 04/13/02 Sev=Info/5 IKE/0x63000025
Loaded OUTBOUND ESP SPI: 0x091E92B8

1729 13:22:12.097 04/13/02 Sev=Info/5 IKE/0x63000026
Loaded INBOUND ESP SPI: 0x7E7A7797

1730 13:22:12.097 04/13/02 Sev=Info/4 CM/0x6310001A
One secure connection established

1731 13:22:12.117 04/13/02 Sev=Info/6 DIALER/0x63300003
Connection established.

1732 13:22:12.477 04/13/02 Sev=Info/5 IKE/0x6300002F
Received ISAKMP packet: peer = 172.17.63.213

1733 13:22:12.477 04/13/02 Sev=Info/4 IKE/0x63000014
RECEIVING <<< ISAKMP OAK QM *(HASH, SA, NON, ID, ID,

NOTIFY:STATUS_RESP_LIFETIME) from 172.17.63.213

1734 13:22:12.477 04/13/02 Sev=Info/5 IKE/0x63000044
RESPONDER-LIFETIME notify has value of 28800 seconds

1735 13:22:12.477 04/13/02 Sev=Info/5 IKE/0x63000045
RESPONDER-LIFETIME notify has value of 4608000 kb

1736 13:22:12.477 04/13/02 Sev=Info/4 IKE/0x63000013
SENDING >>> ISAKMP OAK QM *(HASH) to 172.17.63.213

1737 13:22:12.477 04/13/02 Sev=Info/5 IKE/0x63000058
Loading IPsec SA (Message ID = 0xD5A0CB3C OUTBOUND SPI = 0xBEE54877
INBOUND SPI = 0x2DFC7E29)

1738 13:22:12.477 04/13/02 Sev=Info/5 IKE/0x63000025
Loaded OUTBOUND ESP SPI: 0xBEE54877

1739 13:22:12.477 04/13/02 Sev=Info/5 IKE/0x63000026
Loaded INBOUND ESP SPI: 0x2DFC7E29

1740 13:22:12.477 04/13/02 Sev=Info/4 CM/0x63100022
Additional Phase 2 SA established.

1741 13:22:12.477 04/13/02 Sev=Info/4 IPSEC/0x63700010
Created a new key structure

1742 13:22:12.477 04/13/02 Sev=Info/4 IPSEC/0x63700010
Created a new key structure

1743 13:22:12.477 04/13/02 Sev=Info/4 IPSEC/0x6370000F
Added key with SPI=0xb8921e09 into key list

1744 13:22:12.477 04/13/02 Sev=Info/4 IPSEC/0x63700010
Created a new key structure

1745 13:22:12.477 04/13/02 Sev=Info/4 IPSEC/0x6370000F
Added key with SPI=0x97777a7e into key list

1746 13:22:12.477 04/13/02 Sev=Info/4 IPSEC/0x6370000F
Added key with SPI=0x7748e5be into key list

1747 13:22:12.477 04/13/02 Sev=Info/4 IPSEC/0x63700010
Created a new key structure

1748 13:22:12.477 04/13/02 Sev=Info/4 IPSEC/0x6370000F
Added key with SPI=0x297efc2d into key list

1749 13:22:21.229 04/13/02 Sev=Info/6 IKE/0x6300003D
Sending DPD request to 172.17.63.213, seq# = 1723178673

1750 13:22:21.229 04/13/02 Sev=Info/4 IKE/0x63000013
SENDING >>> ISAKMP OAK INFO *(HASH, NOTIFY:DPD_REQUEST) to 172.17.63.213

1751 13:22:21.259 04/13/02 Sev=Info/5 IKE/0x6300002F
Received ISAKMP packet: peer = 172.17.63.213

1752 13:22:21.259 04/13/02 Sev=Info/4 IKE/0x63000014
RECEIVING <<< ISAKMP OAK INFO *(HASH, NOTIFY:DPD_ACK) from 172.17.63.213

1753 13:22:21.259 04/13/02 Sev=Info/5 IKE/0x6300003F
Received DPD ACK from 172.17.63.213, seq# received = 1723178673,
seq# expected = 1723178673


```
1754 13:22:31.744 04/13/02 Sev=Info/4 IPSEC/0x63700019
Activate outbound key with SPI=0x7748e5be for inbound key
with SPI=0x297efc2d

1755 13:22:46.765 04/13/02 Sev=Info/6 IKE/0x6300003D
Sending DPD request to 172.17.63.213, seq# = 1723178674

1756 13:22:46.765 04/13/02 Sev=Info/4 IKE/0x63000013
SENDING >>> ISAKMP OAK INFO *(HASH, NOTIFY:DPD_REQUEST) to 172.17.63.213

1757 13:22:46.765 04/13/02 Sev=Info/5 IKE/0x6300002F
Received ISAKMP packet: peer = 172.17.63.213
```

Zugehörige Informationen

- [Produkt-Support für die Cisco PIX Firewall](#)
- [Cisco Secure PIX Firewall - Befehlsreferenzen](#)
- [IPSec-Support-Seite](#)
- [Einführung in IPSec](#)
- [Konfigurieren von IPSec](#)
- [Anforderungen für Kommentare \(RFCs\)](#)
- [Technischer Support und Dokumentation - Cisco Systems](#)