



Women Rock IT
IT is a world of possibilities.



Mariana Dahan

Co-Founder and CEO
World Identity Network



Natalie Rens

Founder and CEO
Spaceport AI



TEDx

x = independently organized TED event

www.win.systems



**IDENTITY :
HOW PROOF OF
WHO YOU ARE
CHANGES THE LIFE
YOU LEAD**



MARIANA DAHAN









Blockchain for Humanity Global Challenge

#WIN
#BLOCKCHAIN4HUMANITY GLOBAL CHALLENGE

50
Million
Children
Forced from homes



1 in every
200
Children
in the world is
refugee

150
Billion
Dollars
Trafficking generates
illegal profits
a year globally

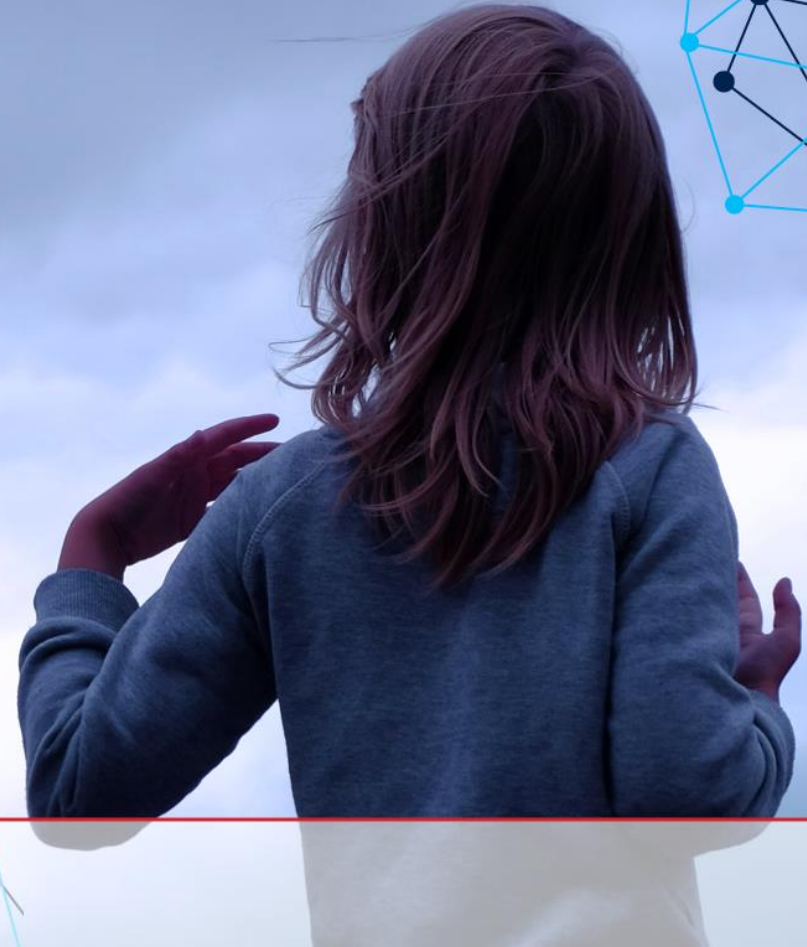


1.1
Billion
People
Worldwide cannot
officially prove
their identity





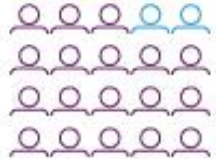
TURNING INVISIBLE CHILDREN INTO INVINCIBLE ONES



Orphanages: a hidden crisis.



80%



OF CHILDREN
IN ORPHANAGES

HAVE A
LIVING
PARENT
BUT ARE

ABANDONED
BECAUSE OF POVERTY,
DISABILITIES OR
DISCRIMINATION



AS MANY AS OUT OF EVERY

37 100
CHILDREN

WHO LIVE IN
ORPHANAGES MAY SUFFER
**VIOLENCE OR
SEXUAL ABUSE**

Those who survive childhood in an orphanage are ten times more likely to be involved in prostitution; 40 times more likely to get criminal records; and 500 times more likely to commit suicide than children who have grown up in families. They're also more likely to abandon their own children to an institution.







Twitter

@WINdotSystems
@marianadahan

Website

www.win.systems



BUILDING FOR MARS

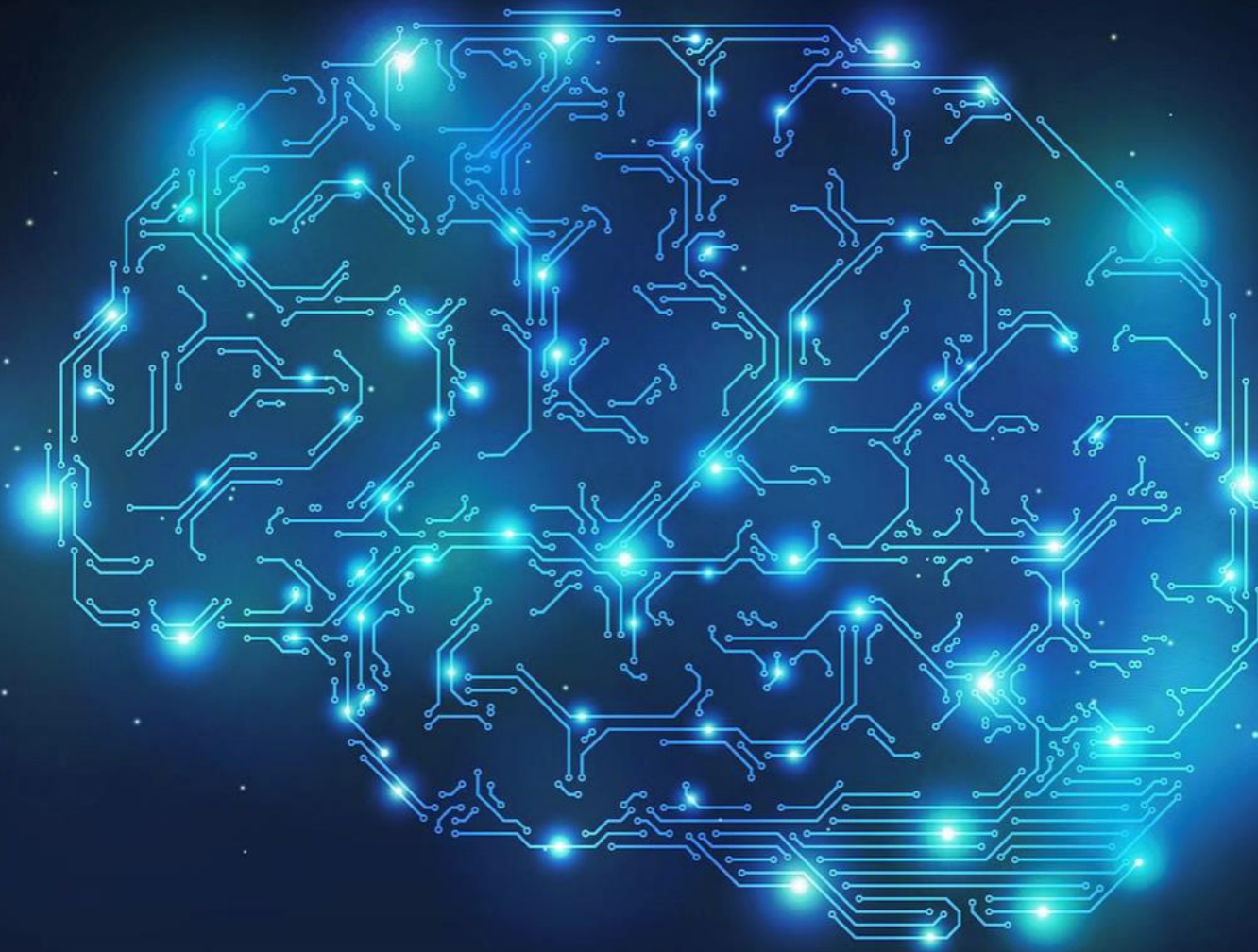
DR NATALIE RENS



MY JOURNEY



POWER OF ARTIFICIAL INTELLIGENCE

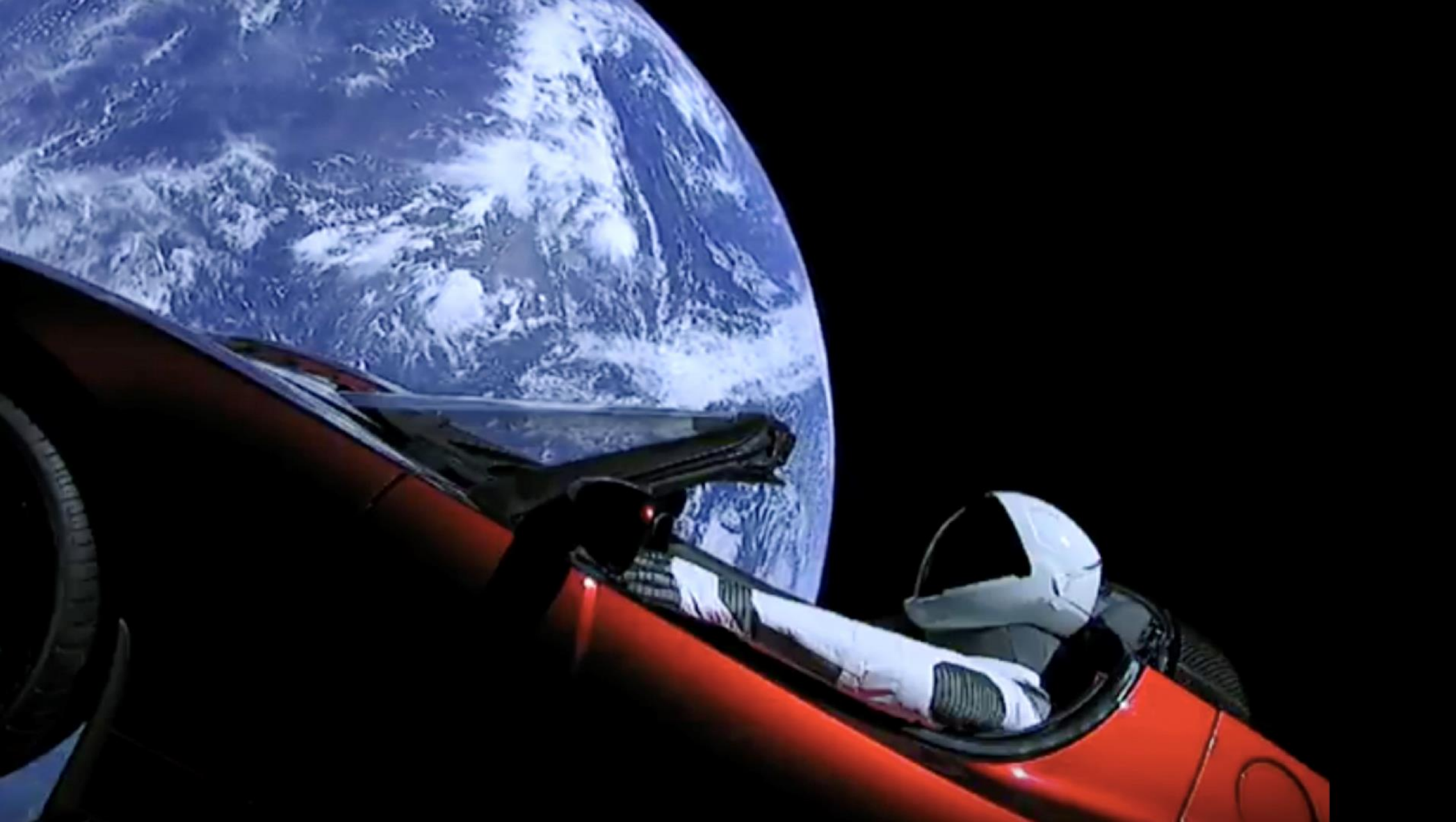




Brisbane.AI



Office of the
Queensland
Chief Entrepreneur



MISSION TO MARS



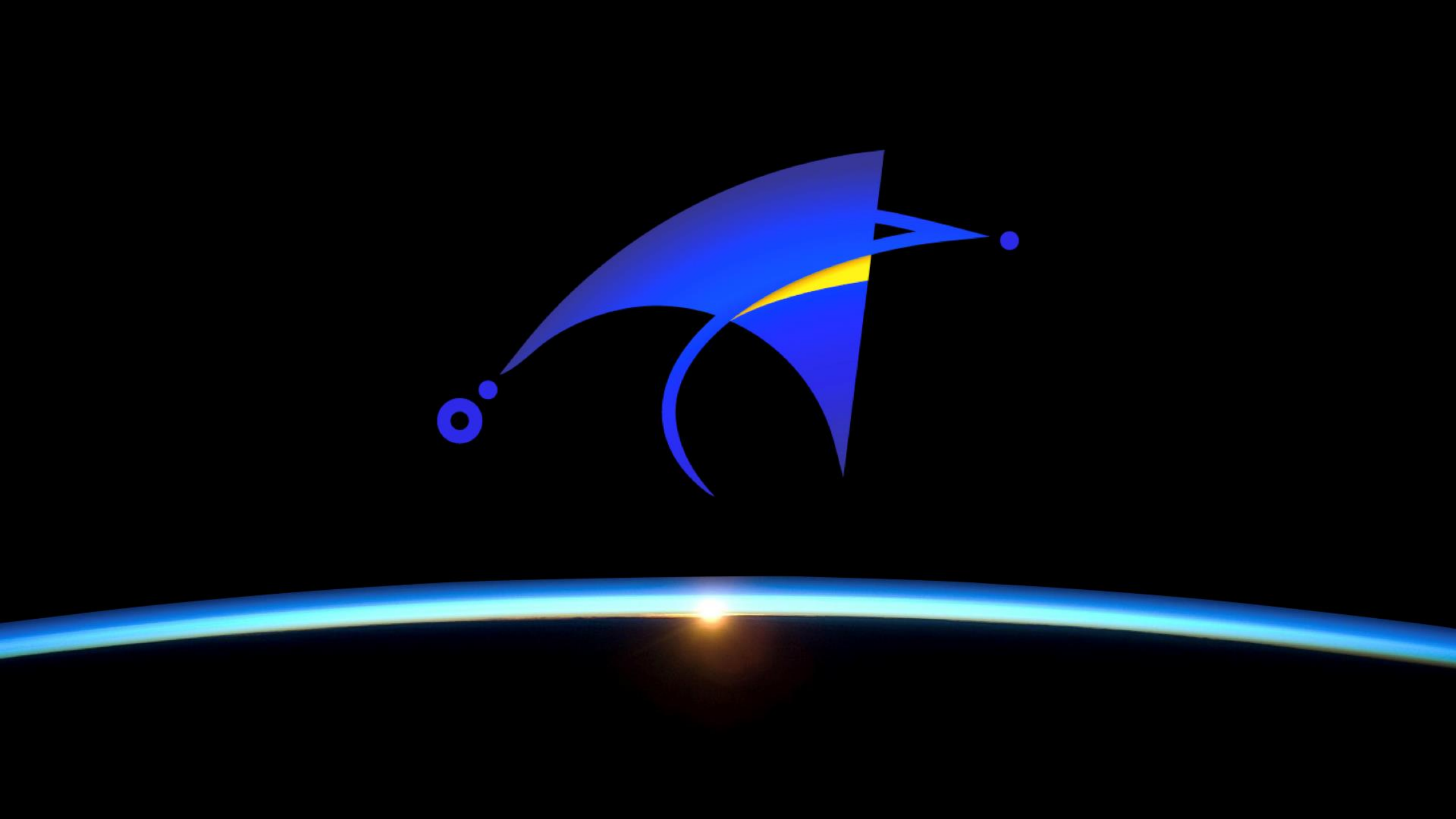
2022* SpaceX cargo ship

2024* SpaceX crewed mission

2032 NASA crewed mission

*add Elon to normal time conversion





OUR MISSION

Build artificial intelligence technologies to enable sustainable human life in space.





FOCUS FIELDS

Human Life Support



Human-Machine Team



Sustainability



DESIGN FOR MARS; DELIVER ON EARTH





HUMAN LIFE SUPPORT

- Perform real-time monitoring and prediction of health and psychological state
- Apply AI to physiological signals (wearables)



HUMAN LIFE SUPPORT

- Perform real-time monitoring and prediction of health and psychological state
- Apply AI to physiological signals (wearables)

e.g. humanitarian aid workers

HUMAN-MACHINE TEAM

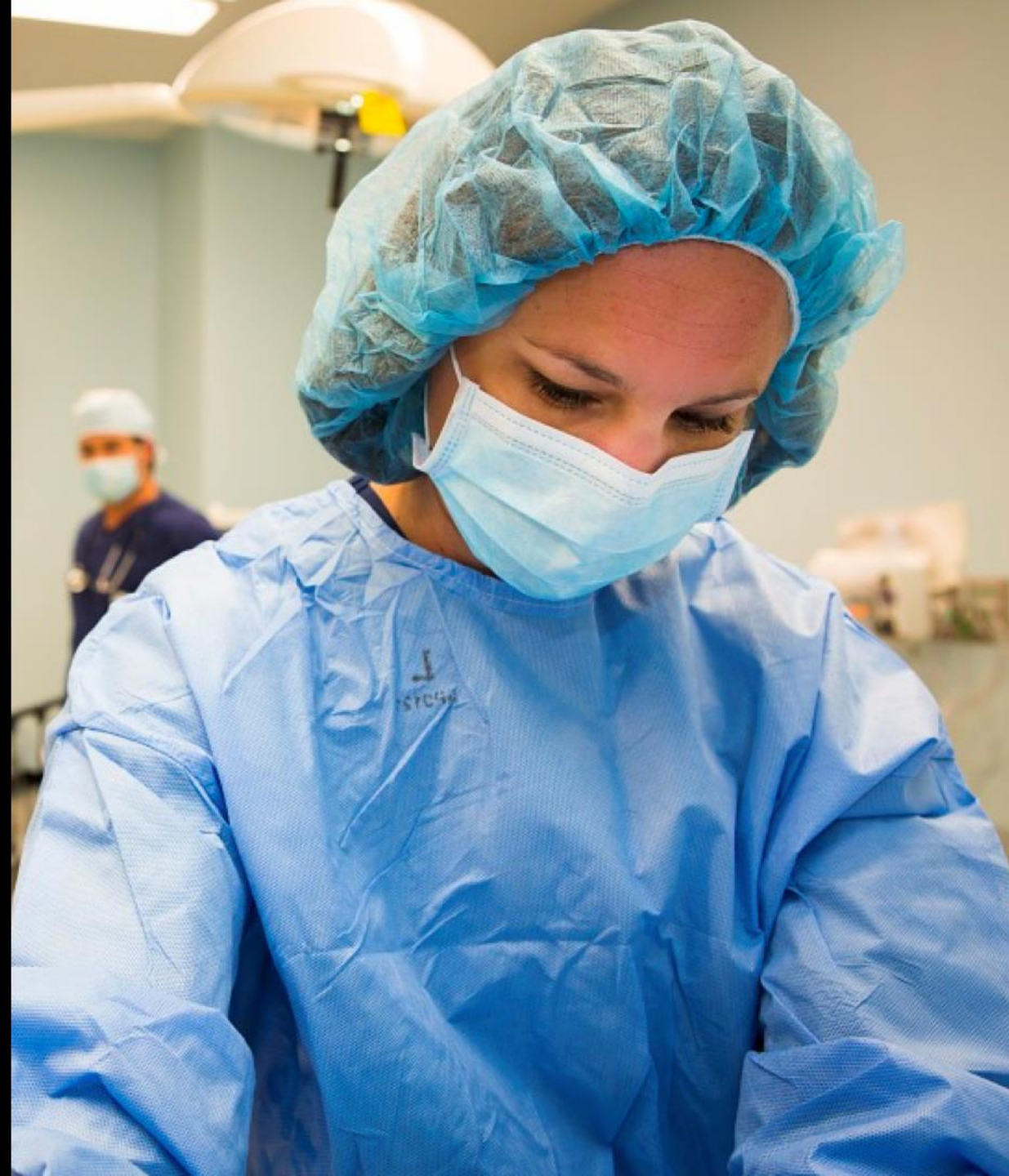
- Monitor and support human decisions
- Apply AI to physiological and cognitive/attention signals
e.g. EEG
- Build adaptive decision agents



HUMAN-MACHINE TEAM

- Monitor and support human decisions
- Apply AI to physiological and cognitive/attention signals
e.g. EEG
- Build adaptive decision agents

e.g. surgeons





SUSTAINABILITY

- Building environmental systems to support humans presence
- Apply AI to systems to optimise performance

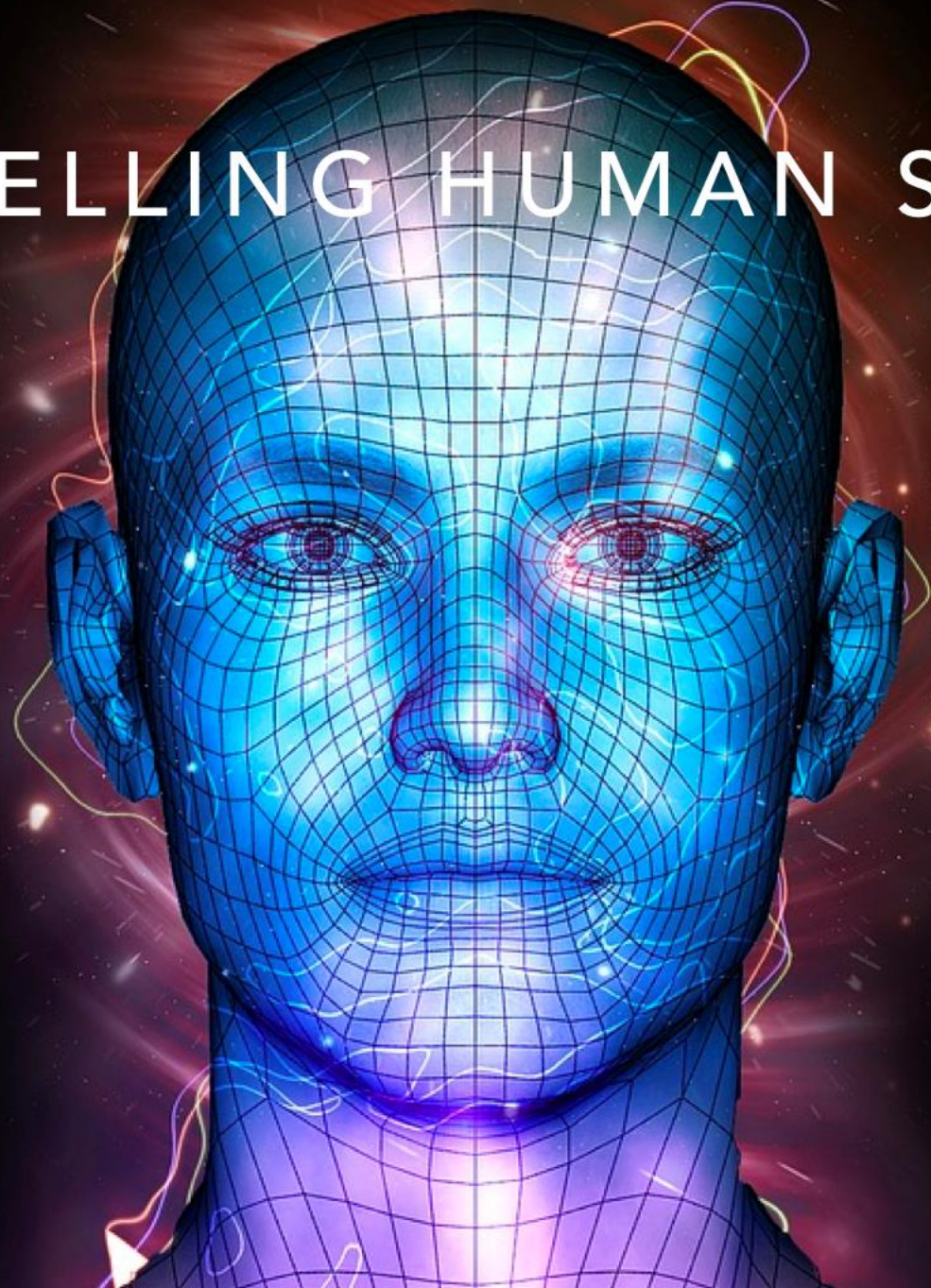


SUSTAINABILITY

- Building environmental systems to support humans presence
- Apply AI to systems to optimise performance

e.g. self-organising
telecommunication networks

MODELLING HUMAN STATE



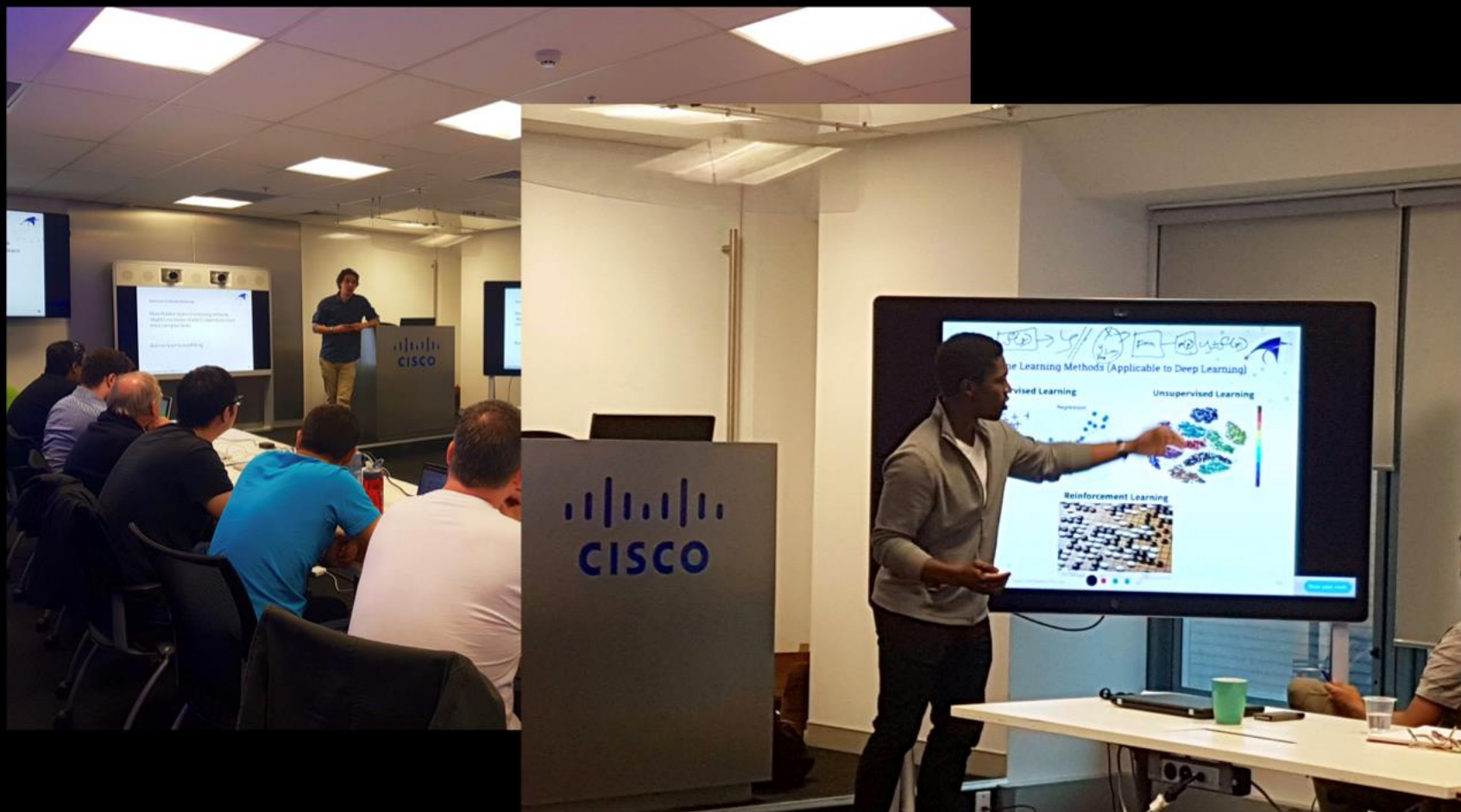
An aerial, top-down view of a futuristic Mars settlement. On the left side, four white rockets are positioned on circular launch pads. A long, thin, segmented transport line extends from the launch pads towards the center of the image. The right side of the image is dominated by a dense, organized city layout with various buildings, domes, and structures. The entire scene is set against the reddish-brown terrain of Mars.

OUR FUTURE MARS SETTLEMENT

SpaceX Mars Plan

BUILDING THE SKILLS

- Developing AI courses
- Recommend the MOOC fast.ai
- Internships



Sean and Seun running our Deep Learning course

BUILDING A GLOBAL COMMUNITY



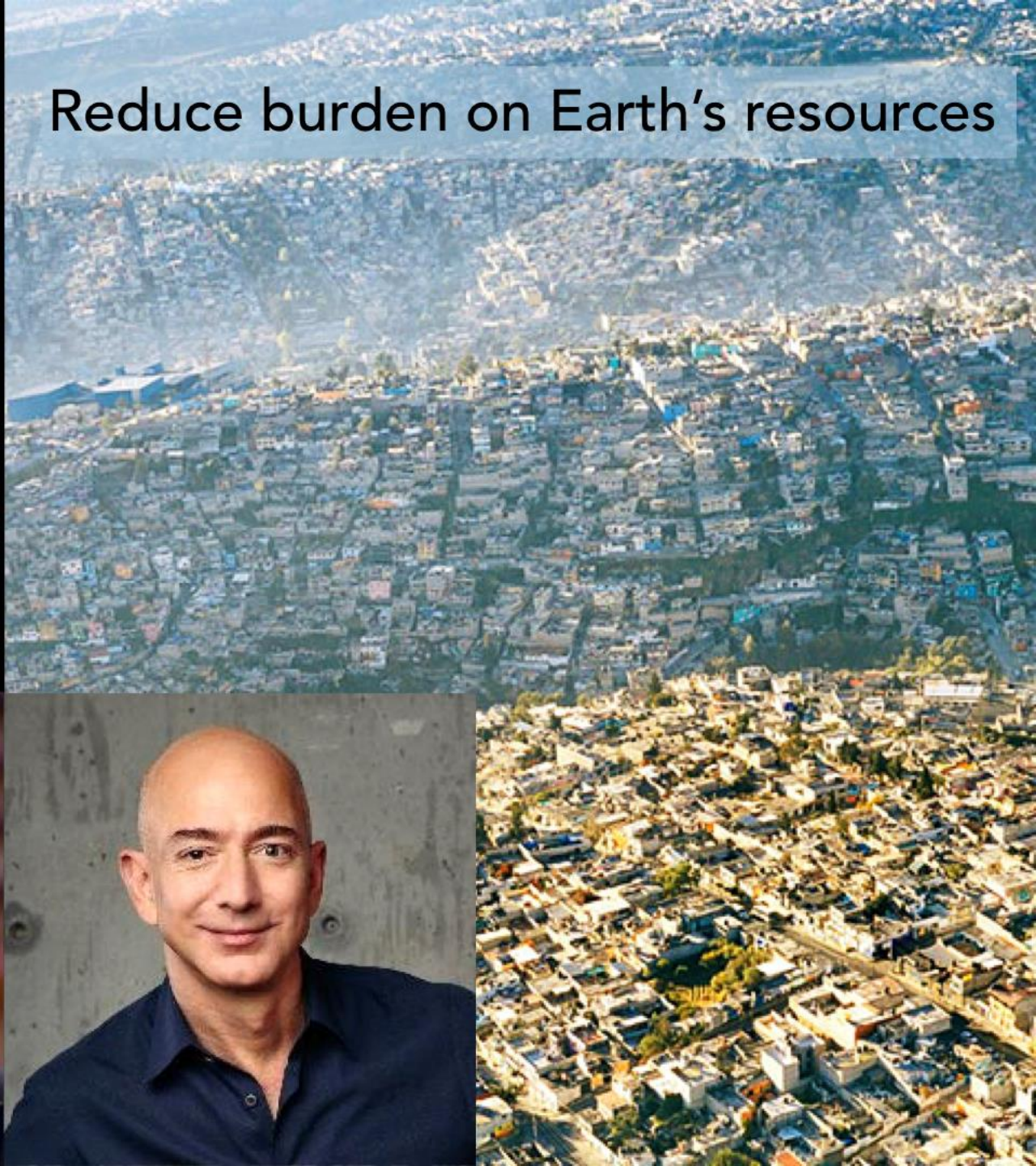


WHY MARS?

Increase probability of survival



Reduce burden on Earth's resources



THE SPIRIT OF EXPLORATION



Geater, the Author, Shirley and two assistants. 1919.

PORTAL TO THE STARS



THANK YOU



natalie@spaceport.ai

@NatalieRens

@SpaceportAI

