

رادإو ءءافكب رىوطتلا تاسسؤم لل نكمى ،اهب ءصاخلا ءىزكرملا ءهءاولا مادختساب .نامألا ءىؤرلا ءىنكم إ نىسحت عم Cisco نم نامألا ءزهء نم ءرىبك ءعومءم

نىوكتلا

ءىزكرملا ءرادإل CSM لى إ رهاظلا ASA ءىوزت مءى ،للاتلا لالم لى

تانىوكتلا

HTTPS ءرادإل ASA نىوكت

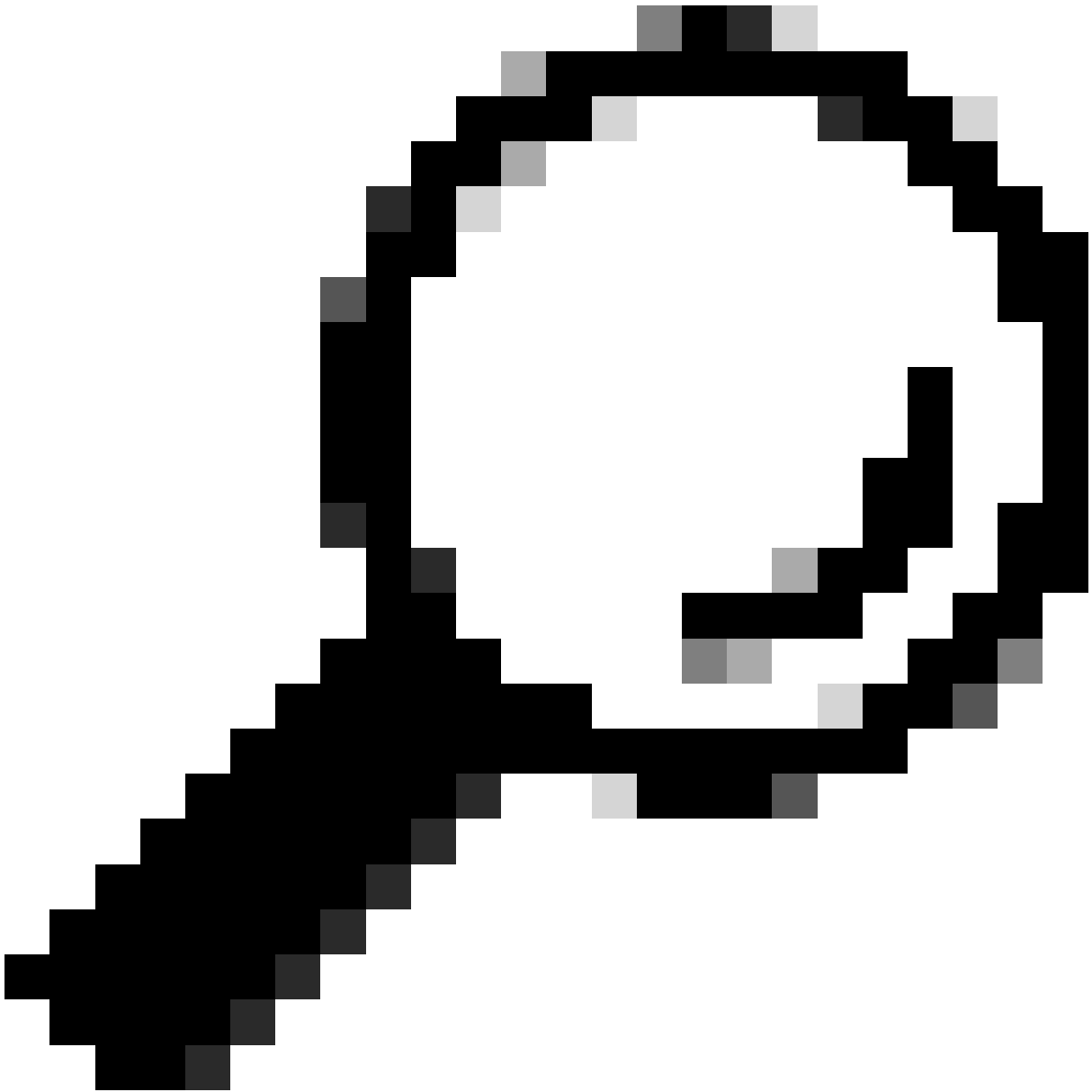
تازاىم ال لكب مدختسم ءاشن إ 1. ءوطءلا

رمأوالا رطس ءغايص (CLI):

```
configure terminal  
username < user string > password < password > privilege < level number >
```

للى امك Cisco123 ءم لك و csm-user لمءتسم لى قلى لى ،لالم رمل لى لاتلا لى ف مءرتى اءه

```
ciscoasa# configure terminal  
ciscoasa(config)# username csm-user password cisco123 privilege 15
```



اضيفي لمالكنتلا اذهل اي جراح مهيلع قداصم الما ني مدختسم الما لوبق متي :خيملت

HTTP مداخل ني كمتب مق 2. ةوطخلال

رم اوأال رطس ةغايص (CLI):

```
configure terminal  
http server enable
```

CSM مداخل IP ناونعل HTTPS لوصوب خامسلا 3. ةوطخلال

رم اوأال رطس ةغايص (CLI):

```
configure terminal
http < hostname > < netmask > < interface name >
```

يُسمح بـ HTTPS لـ ASA من خلال دفن نة كـبش ية حمسي ية ، لثام رم يلات ل ي ف اذه مجرتي
ي جـراخ نراقل (GigabitEthernet0/0):

```
ciscoasa# configure terminal
ciscoasa(config)# http 0.0.0.0 0.0.0.0 outside
```

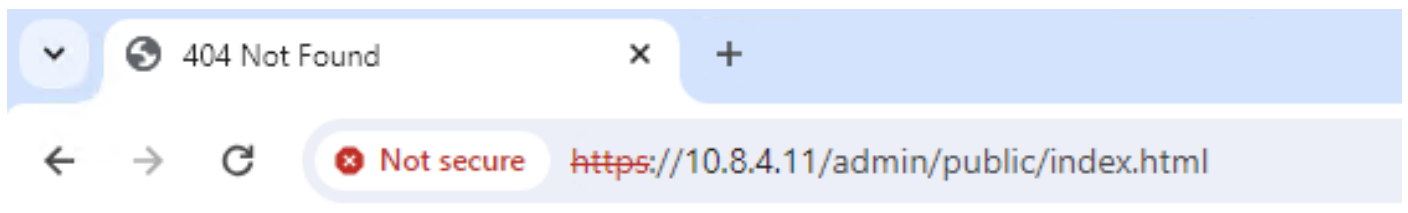
CSM. مـداخ نم HTTPS لـ لوصول اة نـا كـم ا نم قـقحت 4. ةـوطـخـلـا

ةـيـلـاتـلـا ةـغـايـصـلـا بـتـكـاـو بـيـو ضـرـعـتـسـم يـا حـتـفـا:

[https://< ASA IP address >/](https://< ASA IP address >)

ةـوطـخـلـا لـيـلـع ذـفـنـم HTTPS لـ حـمـسـنـا كـ نـا نـا وـنـع يـجـراخ نراقل ل يلات ل لثام ل اذه مجرتي
قـبـاس:

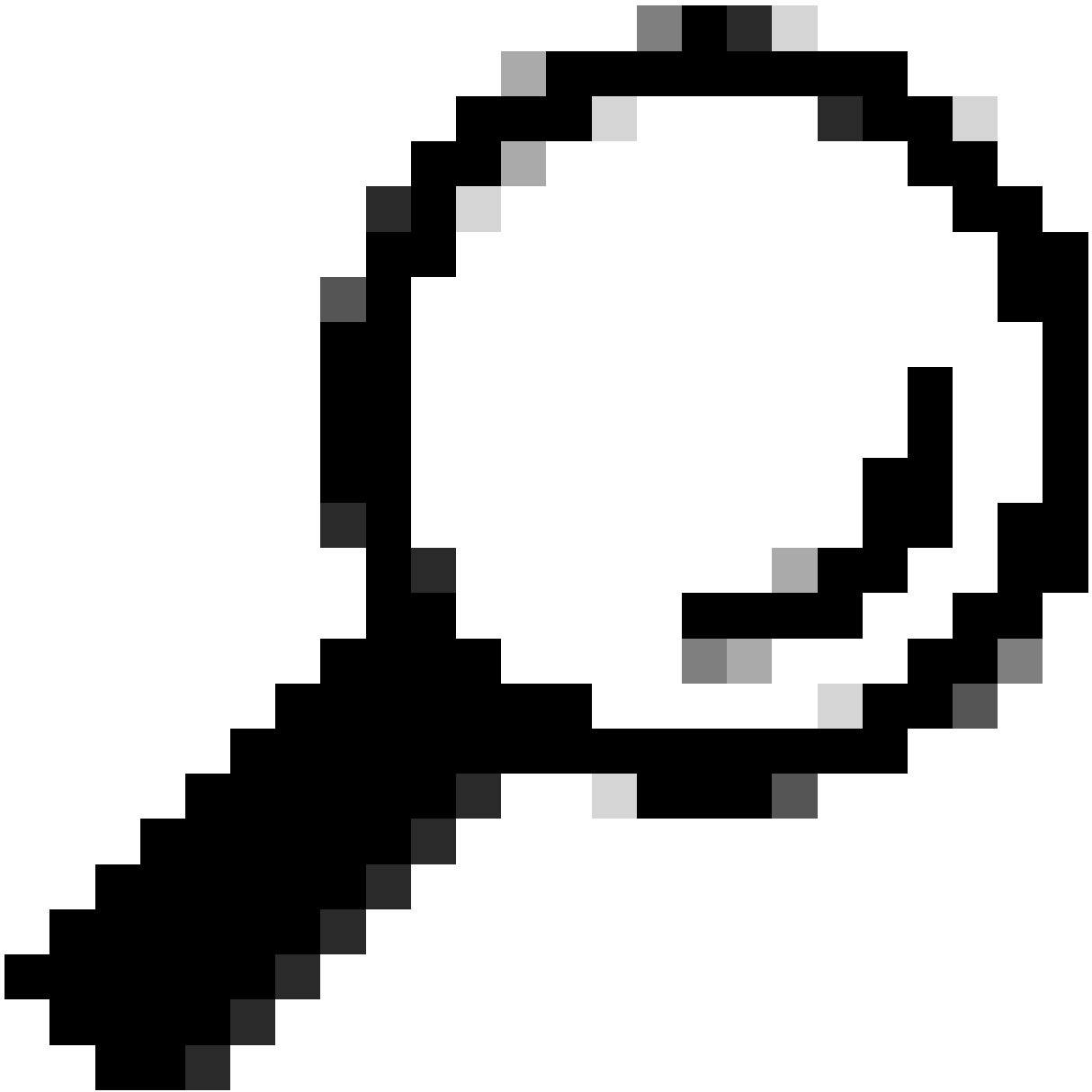
<https://10.8.4.11/>



404 Not Found

The requested URL /admin/public/index.html was not found on this server.

ASA HTTPS ةباجتس



م تي مل اذه ASA نأل ةوطخال هذه ىل ع قوت م 404 أطخال ىل ع روثلع ال م تي مل :خملت
ةباجتس | نكلو ،هه ىل ع Cisco Adaptive Security Device Manager (ASDM) تي ب ت
HTTPS ةدوجوم URL /admin/public/index.html ىل ةح فصل هه ىل ع ةداع | م تي شح ةدوجوم

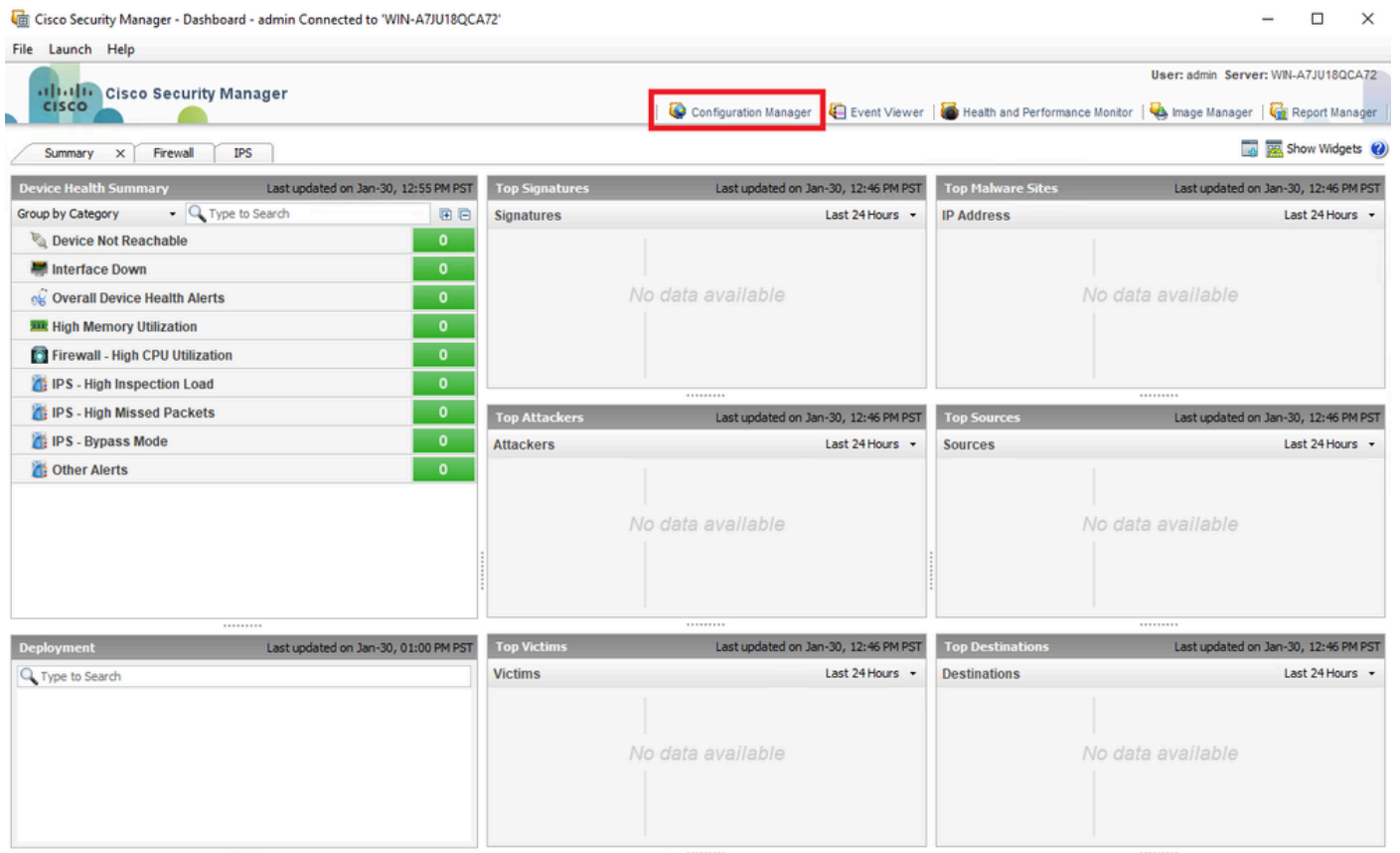
CSM ىل ن م آل ال ASA ةيامح رادج ريفوت

هه ىل لو خدل ل ىل ع س تب م قو CSM ل ىل ع حت فا 1. ةوطخال



CSM لي عم يلى لود دل لي ج است

ني وك تال ري دم حت فا 2. ة و ط خ ل ا



Please choose how you would like to add the device:

Add Device From Network

When you add a device that is live on the network, Cisco Security Manager makes a secure connection with the device and discovers its identifying information and properties.

Add from Configuration File(s)

You can add one or more device configurations from multiple files. When you add a device using its configuration file, Cisco Security Manager discovers the device's identifying information, properties and policies from the file.

Add New Device

You can add a device that is not yet on the network by specifying the device's identifying information and credentials.

Add Device From File

You can add devices from an inventory file that is in the CSV (comma-separated values) format used by Cisco Security Manager, CiscoWorks Common Services DCR, or CS-MARS



Back

Next

Finish

Cancel

Help

زاهج لة فاضا بولسأ

قوف رقنا مث. فاشتكال اتاداع او Secure Firewall ASA لى دعوم لانيوكتلل اق فوة بولطم لانايا بل لمكأ. 5 ةوطخل اليلاتلا.

Identity

IP Type: Static

Host Name: ciscoasa

Domain Name:

IP Address: 10.8.4.11

Display Name:* ciscoasa

OS Type:* ASA

Transport Protocol: HTTPS

System Context

Discover Device Settings

Perform Device Discovery

Discover: Policies and Inventory

Platform Settings

Firewall Policies

NAT Policies

IPS Policies

RA VPN Policies

Discover Policies for Security Contexts

Back Next Finish Cancel Help

ASA تادادع

مك enable ل او ASA ىل ع لم عتسم CSM لك شي ل ا نم دامت ع ا ة قرو بل طت ي ل ا تم ت ا 6. ة و ط خ ل ا

Primary Credentials

Username:

Password:* Confirm:*

Enable Password: Confirm:*

HTTP Credentials

Use Primary Credentials

Username:

Password:

Confirm:

HTTP Port:

HTTPS Port: Use Default

IPS RDEP Mode: ▾

Certificate Common Name: Confirm:

ASA دامتعا تانايب

١٦. قوف رقاو بولطم عيش يا كانه نكي مل اذا ةوطخال هذه زواجت وأ ةبولطمم لتاعومجمم لادح. 7 ةوطخال

Select the groups that this device belongs to:

Department:

Location:

test:

Set Values as Default

Back

Next

Finish

Cancel

Help

CSM ةومجم دي دحت

قفاوم قوف رقنا ،مكحتال ضارغل ةركذت بلط عاشن امتي .8 ةوطخلال

Select the groups that this device belongs to:

Department:

Location:

test:

Set Values as Default

Ticket Required

You must have an editable ticket opened in order to perform this action. You may:
Create a new ticket:

Ticket:

Description:



CSM ٤ركدت ءاشن|







قءالغ! قوف رقن او ءاطخ! نود فاشتكال اذه ءاهن| ءحص نم ققحتلاب مق 9 ءوطخل.

100%

Status: Discovery completed with warnings
Devices to be discovered: 1
Devices discovered successfully: 1
Devices discovered with errors: 0

Discovery Details

Type	Name	Severity	State	Discovered From
	ciscoasa		Discovery Completed with Warnings	Live Device

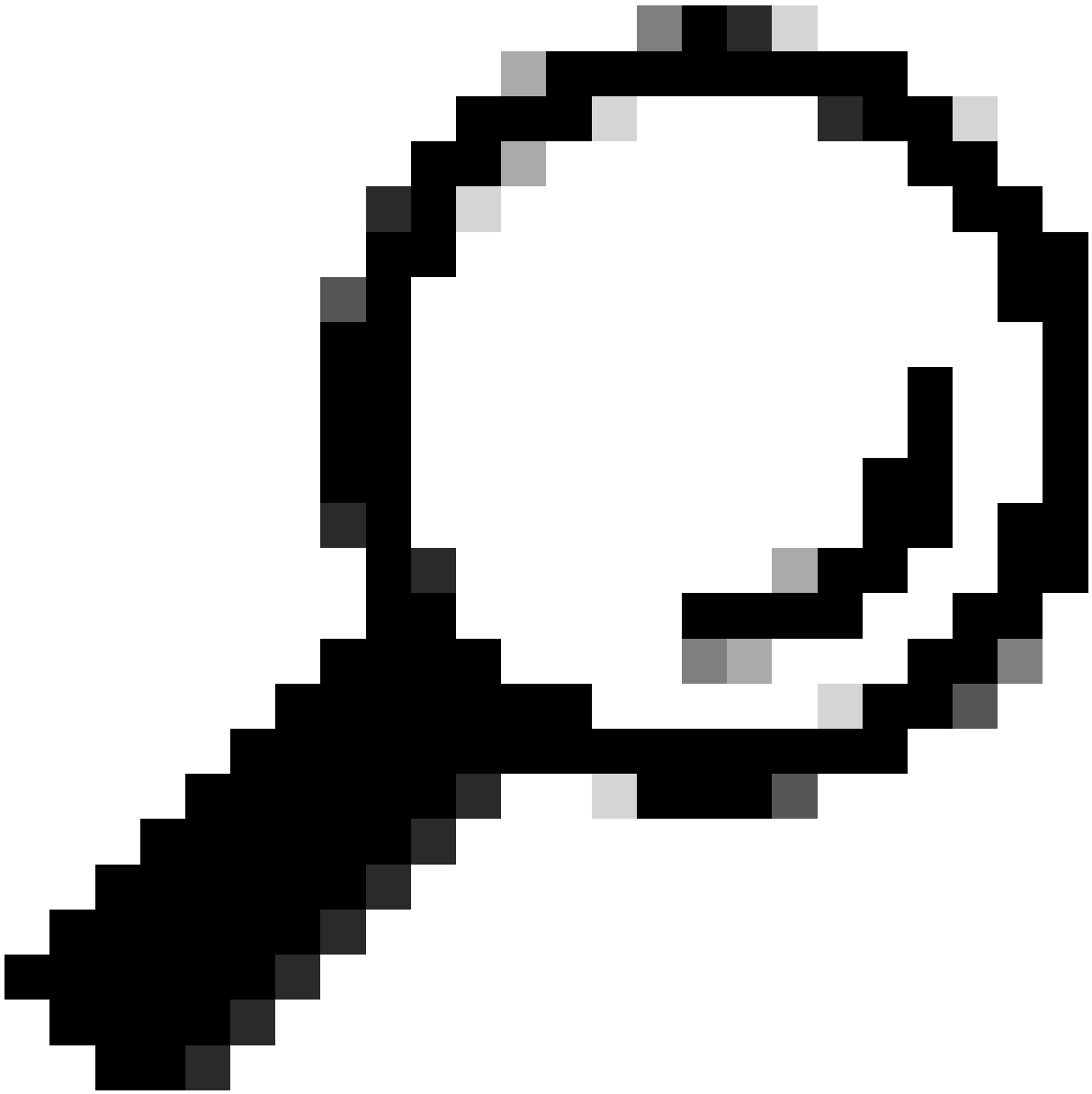
Messages	Severity	Description
CLI not discovered		Policy discovery does not support the following CLI in your configuration: Line 5:service-module 0 keepalive-timeout 4 Line 6:service-module 0 keepalive-counter 6 Line 8:license smart Line 12:no mac-address auto Line 50:no failover wait-disable Line 55:no asdm history enable Line 57:no arp permit-nonconnected
Policies discovered		
Existing policy objects reused		
Value overrides created for device		
Policies discovered		
Add Device Successful		Action If you wish to manage these commands in CS Manager, please use the "Flex Config" function

Generate Report

Abort

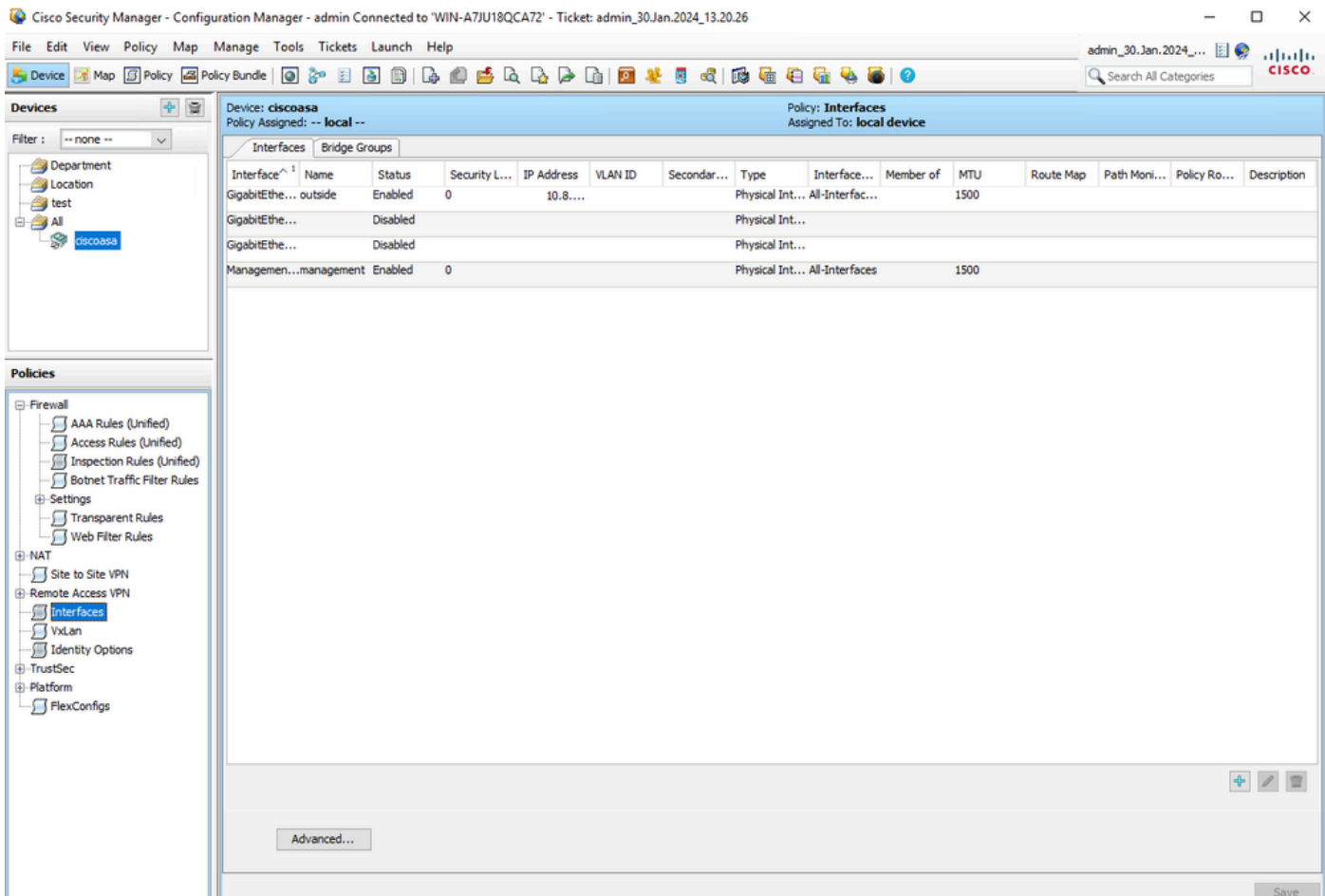
Close

Help



CSM ةطساوب ASA فياظو عي مج معد متي ال شيح ،حجان حنانك تاريذحتلا لوبق متي :حيملت

ةححيصللا تامولعملال ضرعو CSM لي مع في لجمك نألا ASA روهظ نم ققحت 10 ةوطخلال



ةلجسمل ال ASA تام ولعم

ةحصل ال نم ققحت ال

يل ال ال رمال مادختسا متي . اهال ص او اعطخ ال افشكتسا ضارغل ال ASA لىل ع HTTPS اعطخ احيصت رفوتي

debug http

حجان CSM ليجست اعطخ احيصت لىل لاثم اذه

ciscoasa# debug http debug http enabled at level 1. ciscoasa# HTTP: processing handoff to legacy admin

ةمچرتل هذه ل و ح

ةلأل تاي نقتل ن م ة و مچ م ادخت ساب دن تسم ل ا ذه Cisco ت مچرت
م ل ا ل اء ان ا ع مچ ي ف ن م دخت س م ل ل م عد و ت ح م م ي دقت ل ة ي ر ش ب ل و
امك ة ق ي ق د ن و ك ت ن ل ة ل ا ة مچرت ل ض ف ا ن ا ة ظ ح ال م ي ج ر ي . ة ص ا خ ل ا م ه ت غ ل ب
Cisco ي ل خ ت . ف ر ت ح م مچرت م ا ه م د ق ي ي ت ل ا ة ي ف ا ر ت ح ال ا ة مچرت ل ا ع م ل ا ح ل ا و ه
ل ا ا م اء ا د ع و ج ر ل ا ب ي ص و ت و ت ا مچرت ل ا هذه ة ق د ن ع ا ه ت ي ل و ئ س م Cisco
Systems (ر ف و ت م ط ب ا ر ل ا) ي ل ص ا ل ا ي ز ي ل ج ن ا ل ا دن ت س م ل ا