

چودزم ISP ل IP SLAs م ادختساب PBR نيوكت FMC ةطساوب هترادإ متت FTD ىلع

تايوتحمل

[ةمدقملا](#)

[تابلطتملا](#)

[ةمدختسملا تانوكملا](#)

[ةيساسأ تامولعم](#)

[نيوكتلا](#)

[ةكبش ل ل يطيطختلا مسرلا](#)

[تاننيوكتلا](#)

[PBR ىلا لوصولا ةمئاق نيوكت 1. ةوطخلا](#)

[PBR راسم ةطيرخ نيوكت 2. ةوطخلا](#)

[FlexConfig صن تانئاك نيوكت 3. ةوطخلا](#)

[SLA ةشاش نيوكت 4. ةوطخلا](#)

[راسملا راسم عم ةتباتلا تاراسملا نيوكت 4. ةوطخلا](#)

[PBR FlexConfig نئاك نيوكت 5. ةوطخلا](#)

[FlexConfig ةسايس ل PBR FlexConfig نئاك نيوعت 6. ةوطخلا](#)

[ةحصللا نم ققحتلا](#)

[اهجالص او ءاطخألا فاشكتسا](#)

ةمدقملا

(FMC) ةطساوب هترادإ متت FTD ىلع IP SLAs عم PBR نيوكت ةيفي ك دنتمسمل اذه فص ي

نم ةينفلا ةدعاسملا زكرم سدنهم ،زيكزاف يتريف زيريب لاي ناد لب ق نم ةمهاسملا تمتم Cisco.

ةيساسألا تابلطتملا

تابلطتملا

ةيلالاتل عيضاوملاب ةفرعم كيدل نوكت نأب Cisco ي صوت

- PBR Cisco Adaptive Security Appliance (ASA) نيوكت ليغشت
- FlexConfig Firepower ليغشت
- IP SLAs

ةمدختسملا تانوكملا

ةيلالاتل ةيداملا تانوكملا وجماربل تارادصا ىلا دنتمسمل اذه يف ةدراولا تامولعملا دنتمست

- Cisco FTD، رادصإلا 7.0.0 (Build 94)
- Cisco FMC، رادصإلا 7.0.0 (Build 94)

ةصاخ ةي لمعم ةئي ب ي ف ةدوجوملا ةزهجالا نم دنتسمل اذ ه ي ف ةدراول ا تامولعمل اءاشن ا مت تناك اذا .(يضا رتفا) حوسمم نيوك تب دنتسمل اذ ه ي ف ةمدختسمل ةزهجالا عيمج ت ادب رما يال لم تحملا ريثا ل ل كم ه ف نم دكات ف ، ليغشتلا دي ق ك تكبش

ةيساس ا تامولعمل

Internet Protocol ب ن ج ي ل ا ب ن ج Policy Based Routing (PBR) نيوك ت ل ا ةي ف ي ك دنتسمل اذ ه حضوي زكرم ةطساوب هتراد ا مت ي ذل ا Cisco Firepower Threat Defense (FTD) ي ل ع (IP SLA) Service Level Agreement Cisco ن م FirePOWER (FMC) ةراد ا

PBR وه طقف ةهوجلل IP نيوانع ي ل ا ادانتسا هيجوتلا ةداع ا تارارق يديلقتلا هيجوتلا ذخ ا ي تباثل هيجوتلا او هيجوتلا تالوكوتوربل لي دب .

لثم تامولعمل ا م ادختساب حمسي ه ن ا ل هيجوتلا ي ف قستمل ا مكحتلا نم ديزملا رفوي وهو ةهوجلل IP ناونع ب ن ا ج ب هيجوت ريياعمك ةهوجلل او ردصملا ذفانم و ا ردصملا IP نيوانع

ةساسحلا تاق ي ب طتلا (PBR) لي ني ف ي لوبلا ماظت نال ةلم تحملا تاهوي رانيسي ل ا نمضتتو ةصصخم تا طاب ترا ربع تانا ي بل رورم ةك رح و ا ردصملا

IP ةيلالاتلا ةوطخل رفوت نامضل IP ةمدخل ا يوتسم تاي قافات ا ذيفنت نكمي ، PBR ب ن ا ج ب ةيداعلا مزحلا لدابت لال خ نم ي فرطلا لاصتالا بقارت ةي ل ا ه SLA

، FMC Graphical User Interface (GUI) لال خ نم ةرشابم اموعدم PBR نكي مل ، رشنلا تقوي فو FlexConfig تاسايس م ادختسا ا ةزيملا نيوك ت بلطتي

ةمدخل ا يوتسم تاي قافات ا معد متي (ICMP) Internet Control Message Protocol طقف ، يرخ ا ةي حان نم (SLA) FTD ةطساوب

ةرئاد (ISP) Internet Service Provider ساسا ي ربع مزحلا هيجوتل PBR م ادختسا ا متي ، لاثملا اذ ه ي ف ردصملا IP ناونع ي ل ع ةي نم ب م

ةرئادلل يطا ي تح ا عارج ا ضر ف ي و لاصتالا IP SLA لوكوتورب ب قاري ، هسفن تقولا ي ف ل طع ي ا ثودح ةلاح ي ف ةي طا ي تحالا

نيوك ت ل ا

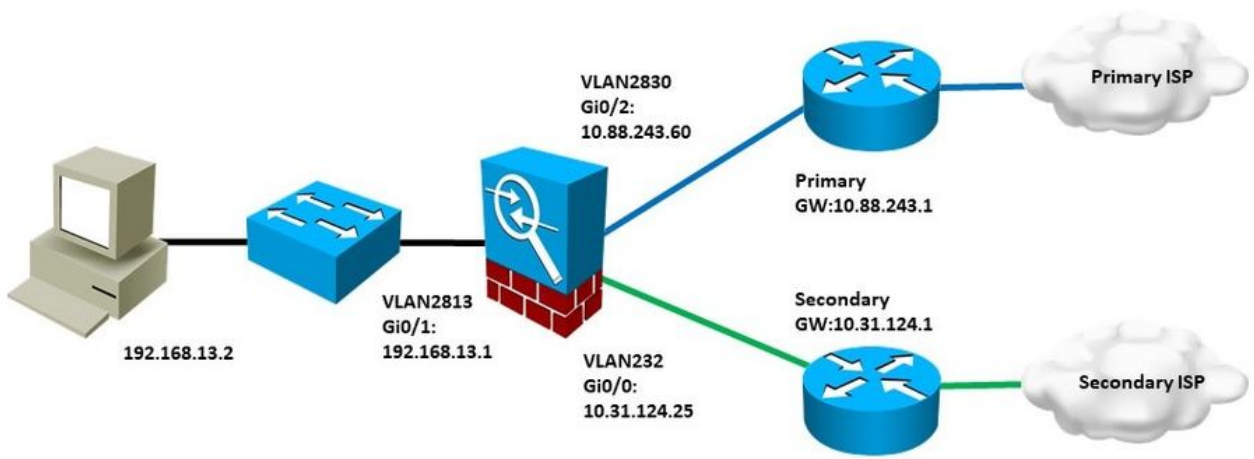
ةكبش ل ل يطيختلا مسرلا

لصتي . VLAN230 و VLAN232: ني تي ج ر ا خ ني تهجاو ي ل ع Cisco نم FTD يوتحي ، لاثملا اذ ه ي ف فلتخم ISP ب دحاو لك

م دختسي ي ذل ا ساسا ل ا ISP لال خ نم ةي ل خ ادلا VLAN2813 ةكبش نم رورملا ةك رح هيجوت متي PBR.

هيجوت ب ج ي) طقف ردصملا IP ناونع ي ل ا ادانتسا هيجوت ةداع ا تارارق PBR راسم ةطي رخ ذخ ا ت ي ف هقي ب طت متي و (VLAN230 ي ف 10.88.243.1 ي ل ا VLAN2813 نم هلابقتسا ا مت عيش لك FTD نم GigabitEthernet 0/1 ةهجاو

IP ب ةصاخلا (SLAs) ةمدخل ا يوتسم تاي قافات ا FTD جم انرب م دختسي ، هسفن تقولا ي فو زواجت متي ، VLAN230 ةكبش ي ف لشف ي ا ثودح ةلاح ي ف . ISP ةباوب لك ب لاصتالا ةبقارمل VLAN232 ةكبش ي ل ع يطا ي تحالا خسنلا ةرئاد ي ل ا FTD لشف



تاني وكتال

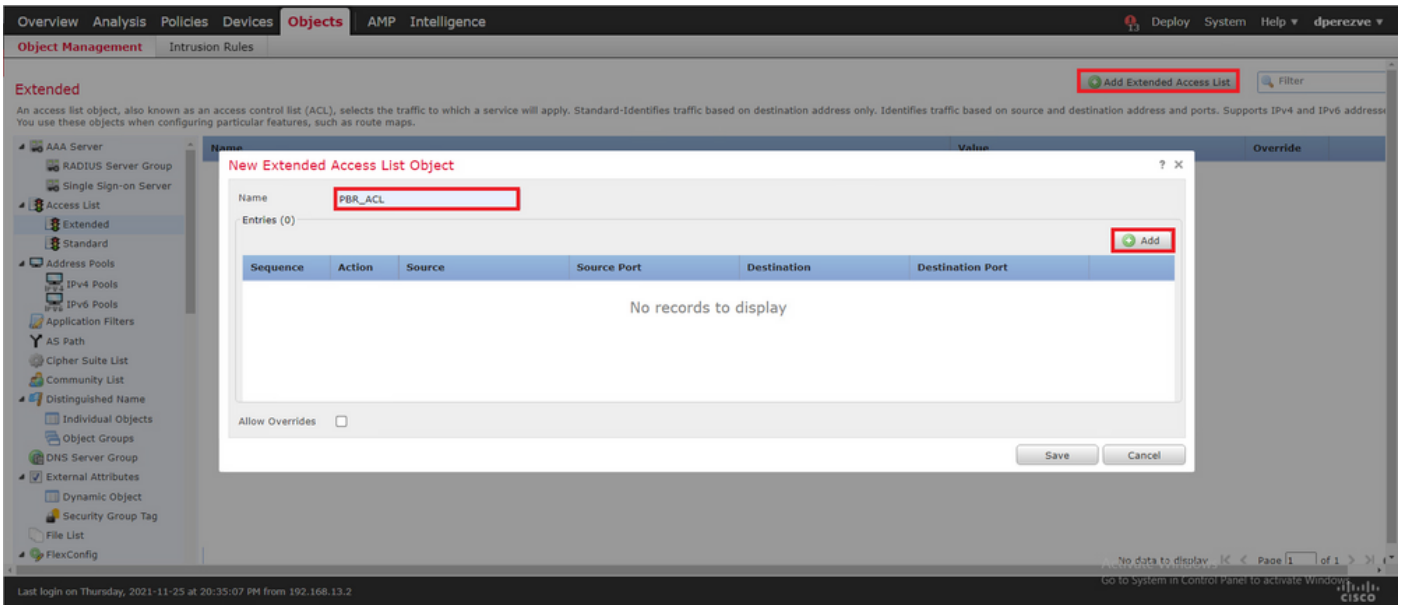
PBR لى لوصول ةمئاق ني وكت 1. ةوطخل

هه وكتال ةسايسل ةضخت نأ بجي يتال مزحل دح، PBR ني وكت نم لى لوال ةوطخل في رورم ل ةكرح دي دحت لوصول ةمئاق وراسم ل طئارخ PBR مدختسي.

Extended دح و Objects > Object Management اه لى لقتنا ةق باطم ل رى اع م ل لوصول ةمئاق دي دحت ت. تاي وحت م ل لودج في ةئالف Access List دحت.

The screenshot shows the Cisco ASA configuration interface. The 'Objects' tab is selected, and the 'Access List' object is highlighted in the left sidebar. The main area shows 'No records to display' for the 'Extended' access list type. The interface includes a navigation bar with 'Overview', 'Analysis', 'Policies', 'Devices', 'Objects', 'AMP', and 'Intelligence'. The 'Objects' tab is active, and the 'Access List' object is selected. The main area shows 'No records to display' for the 'Extended' access list type. The interface also includes a 'Deploy' button and a 'System' menu.

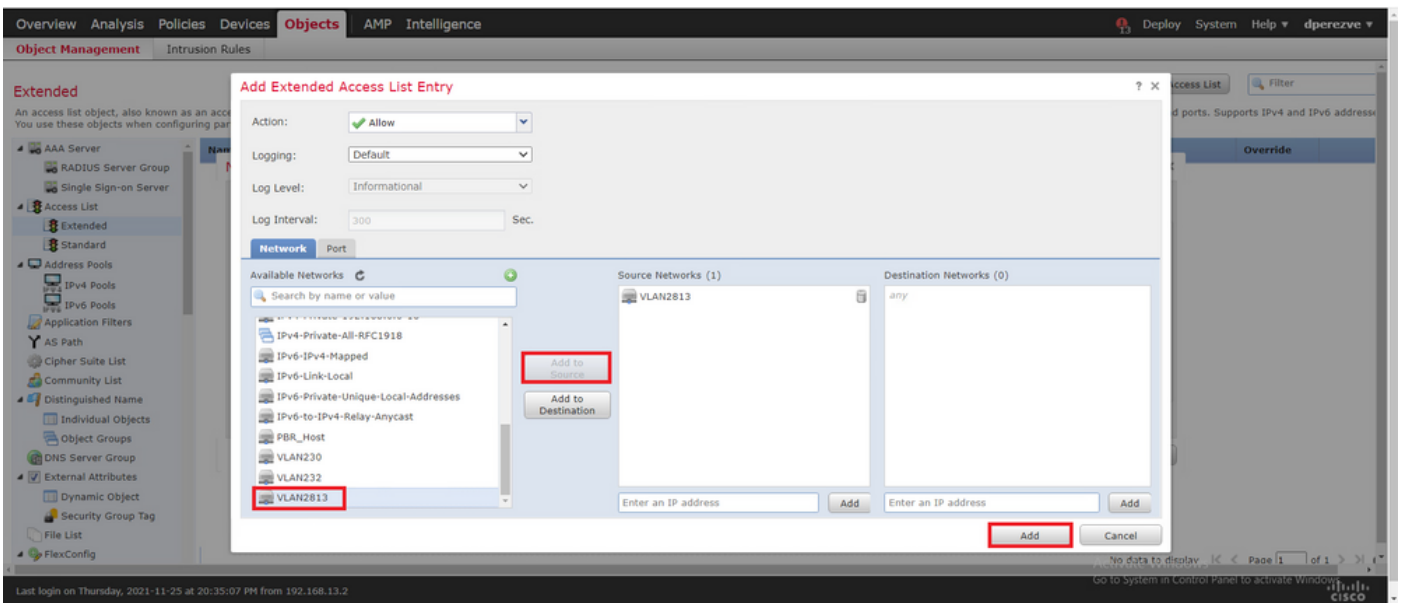
م ث، نئال ل م سا ني عتب مق، راطل Access List Object New Extended في . Add Extended Access List رقنا لوصول ةمئاق ني وكت ب ةدبل ل رز Add دح.



قائمة هذه في ،ةلخادلا ةكبشلا لثمي يذلا نئال دح ،راطإ Add Extended Access List Entry في VLAN2813.

لوصول ةمئاق ل ردصمك هفيعرعتل Add to Source رقنا

لخادلا ءاشنال Add رقنا



تائنالك ةمئاق لئال ةفاضل بجي . Save رقنا

Overview Analysis Policies Devices **Objects** AMP Intelligence Deploy System Help dperezve

Object Management Intrusion Rules

Extended

An access list object, also known as an access control list (ACL), selects the traffic to which a service will apply. Standard-identifies traffic based on destination address only. Identifies traffic based on source and destination address and ports. Supports IPv4 and IPv6 addresses. You use these objects when configuring particular features, such as route maps.

Name	Value	Override
PBR_ACL		X

Displaying 1 of 1 rows Page 1 of 1

Last login on Thursday, 2021-11-25 at 20:35:07 PM from 192.168.13.2

2. عوطخل راسم ةطيرخ نيوكت

ةطيرخ موقت راسم ةطيرخ ىلع اهنبيعتب مق PBR، ىل لوصول ةمئاق نيوكت درجم لوصول ةمئاق يف ةدحمل ةقباطملا طورش لباقم رورملا ةكرح ميقتب راسملا

هيجوتلا جهن يف ةدحمل تاءارجلال ذيفنتب راسملا ططخم موقبي، قباطت شودح دع

تايوتحمل لودج يف Route Map ددحو Objects > Object Management ىل لقتنا، راسملا ةطيرخ ديحتل

Overview Analysis Policies Devices **Objects** AMP Intelligence Deploy System Help dperezve

Object Management Intrusion Rules

Route Map

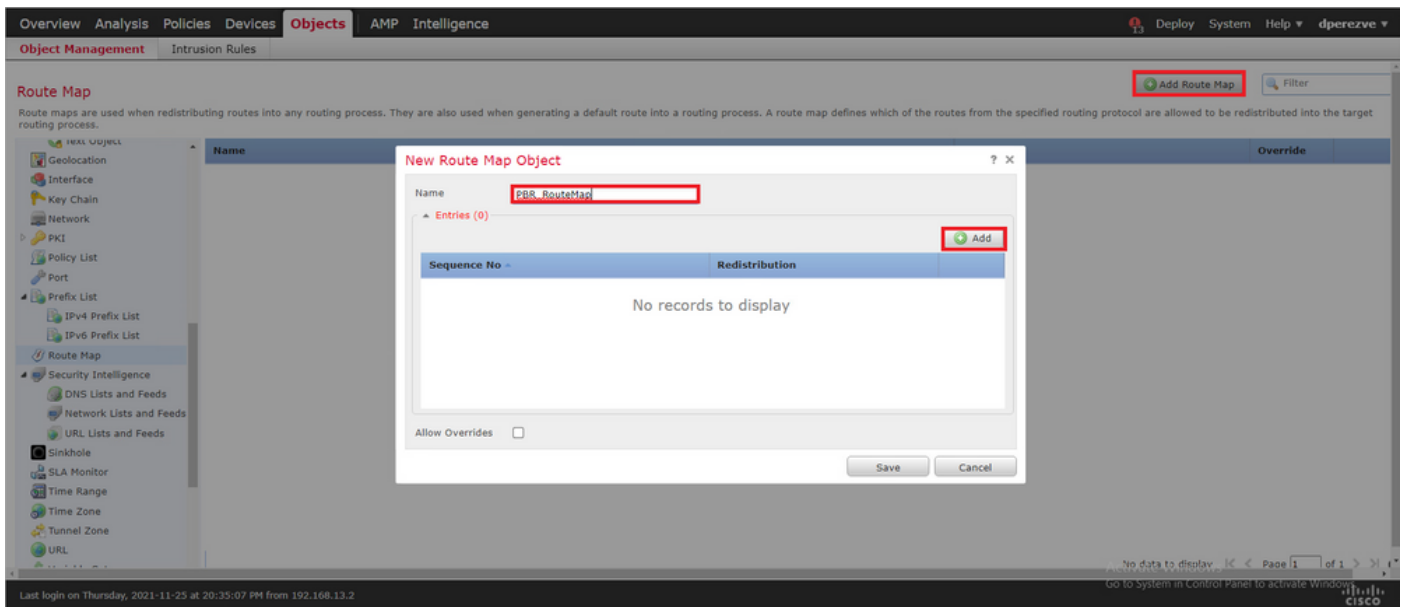
Route maps are used when redistributing routes into any routing process. They are also used when generating a default route into a routing process. A route map defines which of the routes from the specified routing protocol are allowed to be redistributed into the target routing process.

Name	Value	Override
No records to display		

AC No data to display Page 1 of 1

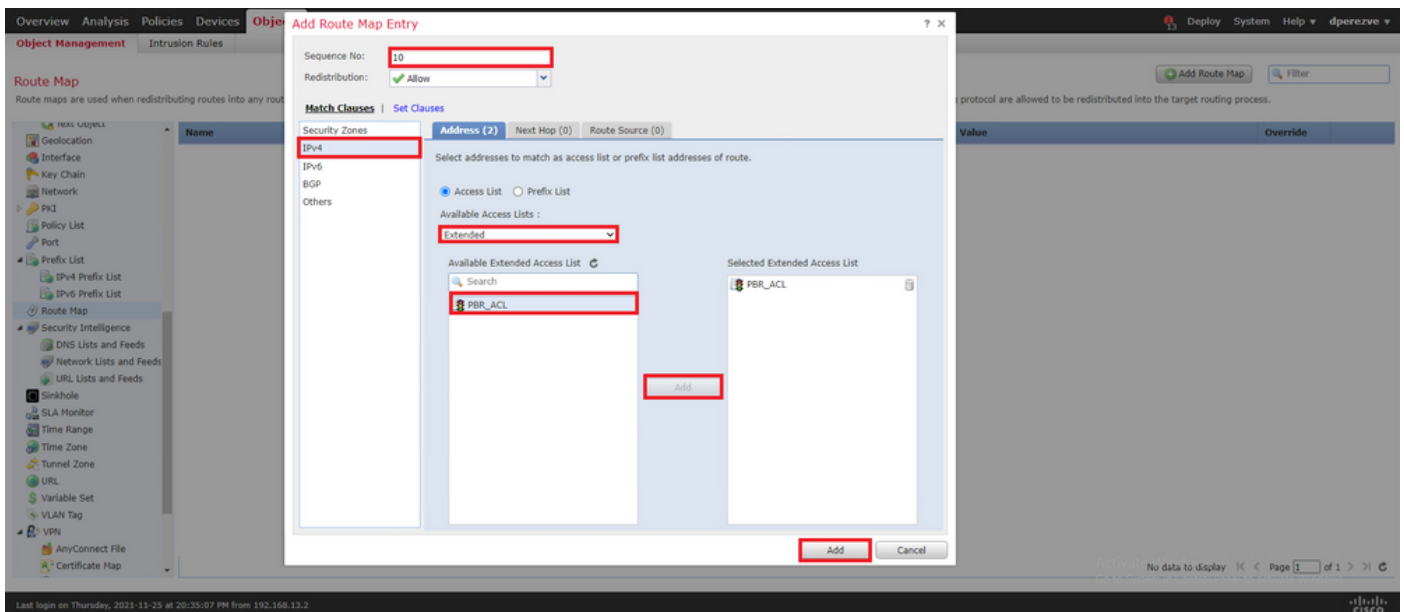
Last login on Thursday, 2021-11-25 at 20:35:07 PM from 192.168.13.2

ءاشنل Add Route Map رقنا م، نئاكلل مسا نبيعتب مق New Route Map Object يف > Add Route Map رقنا ديديج راسم ططخم لاخذ

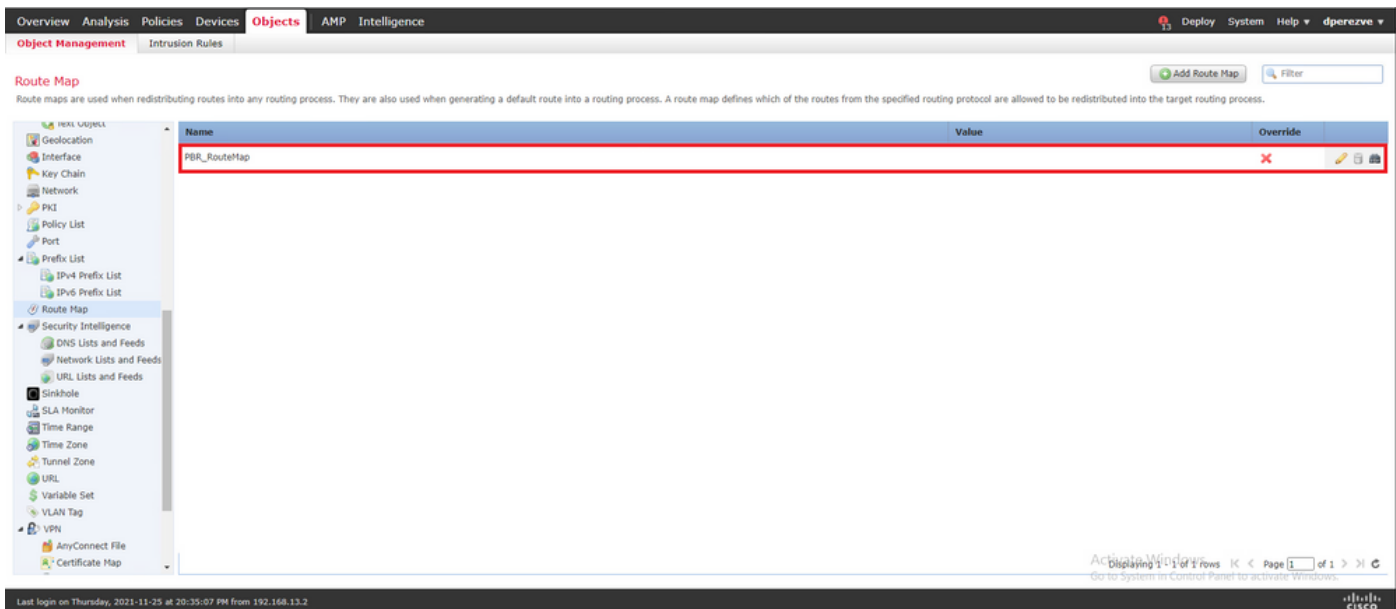


ديجدل لادخال عقوم ليلس لست مقر فيرعتب مق ،راطا Add Route Map Entry في
 ةلدسنم ل ةمئاق ل Available Access List في ع سوم ددحو IPv4 > Match Clauses ل لقتنا
 1. ةوطخلال في هؤاشنإ مت يذلا لوصول ةمئاق نئاك ددح
 لادخال ءاشنإ ل Add رقنا.

65535 ل 0 نم) 65536 ل لصي ام (FTD ةعرسل قئاف لاسرإل اجمانرب معدني :ةظحال م
 ل ءال ةيولوالا وذ ميقيقتلا ناك املك ،مقرلا ضفخنا املك . ةفلتخم تالادخإ



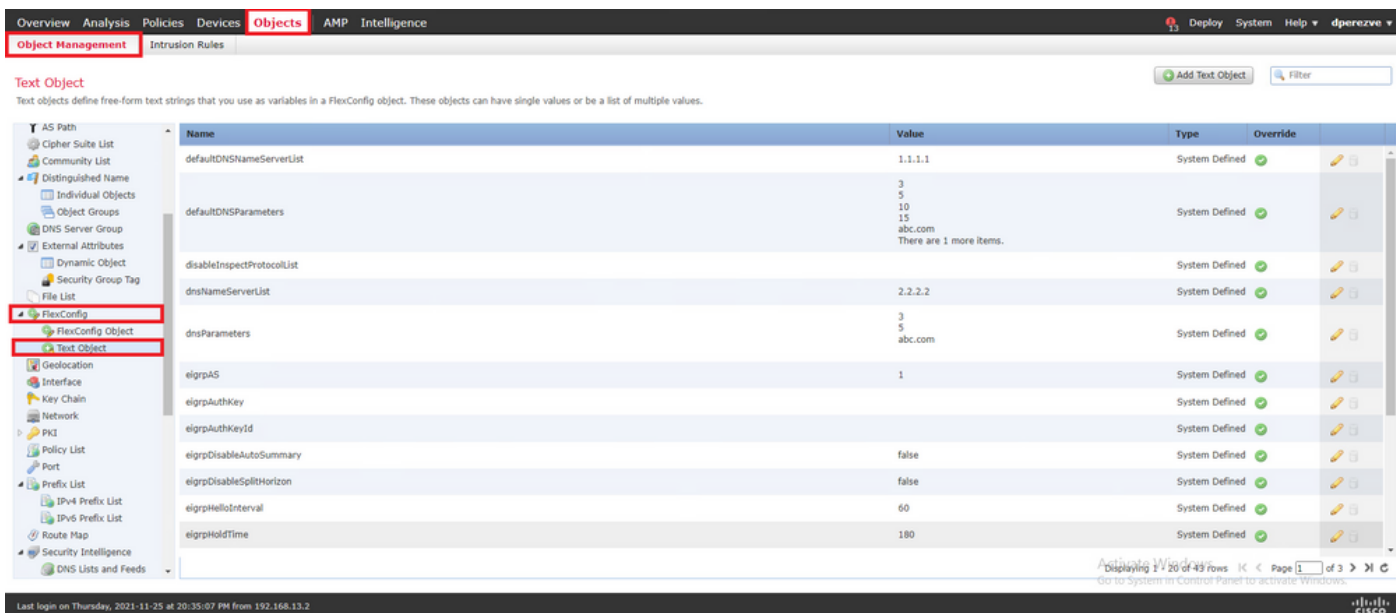
تائكال ةمئاق ل ل نئكال ةفاضإ . Save رقنا



3. ةوطخلل ةنئلك نيوكت FlexConfig

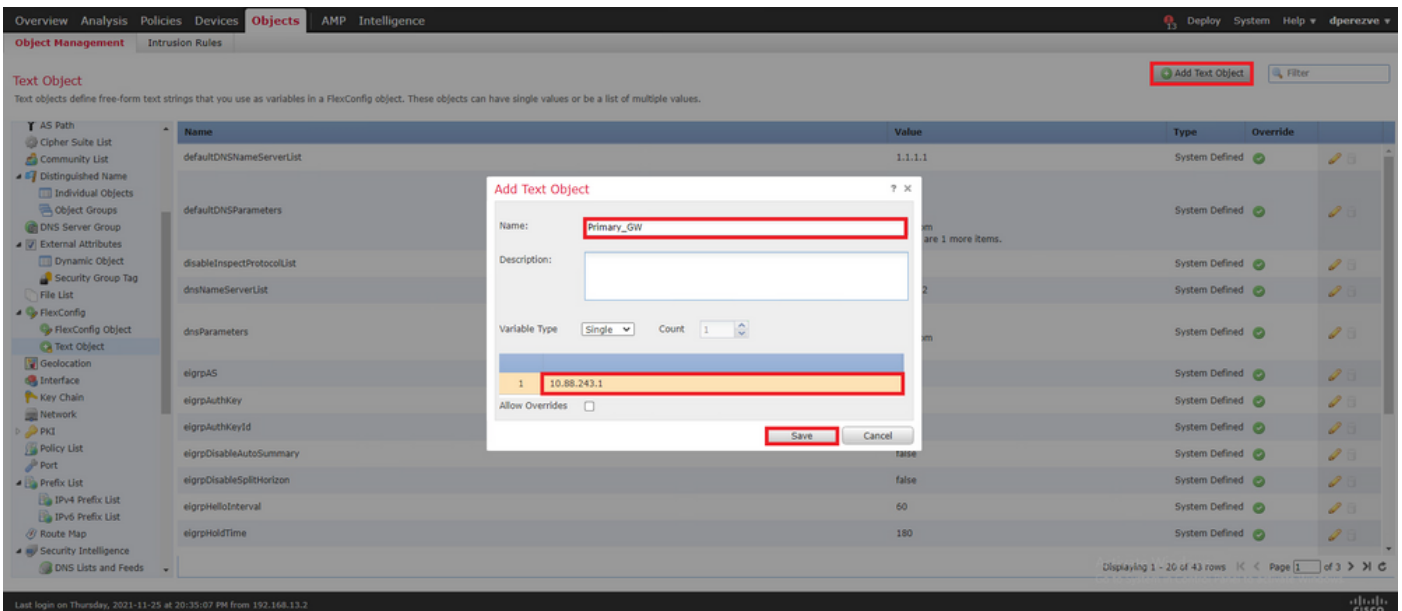
ةيضا رتفا تاباوب لثمت يتللا FlexConfig ةنئلك في رعت ةيلا ل ةوطخلل نمضتت طبري يذللا FlexConfig ةنئلك نيوكت في اقحال هذه ةنئلك مادختسا متي . ةرئاد لكل PBR (SLAs) ةمدخلل يوتسم تالوكت ورتب ب

FlexConfig تحت Text Object ددحو و Objects > Object Management لىل لقتنا FlexConfig ةنئلك دي دجتل . تايوتحمل لودج في ةئفلا



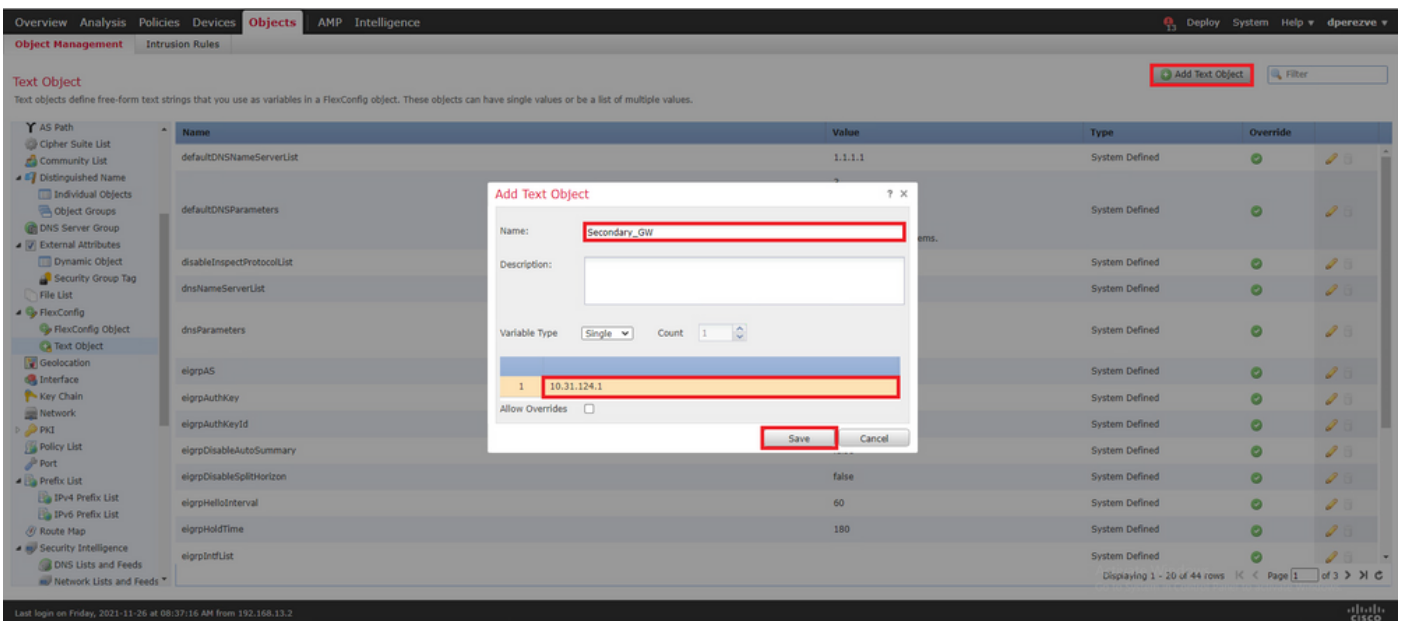
لثمي يذللا ةنئلك ل م س ن ي ع ت ب مق ، راطلإل في Add Text Object في . Add Text Object رقنا زاهل اذهل IPv4 ناوع ددحو ةيلا ساسال ةباوبلل

دي دج ةنئلك ةفاضلإ Save رقنا

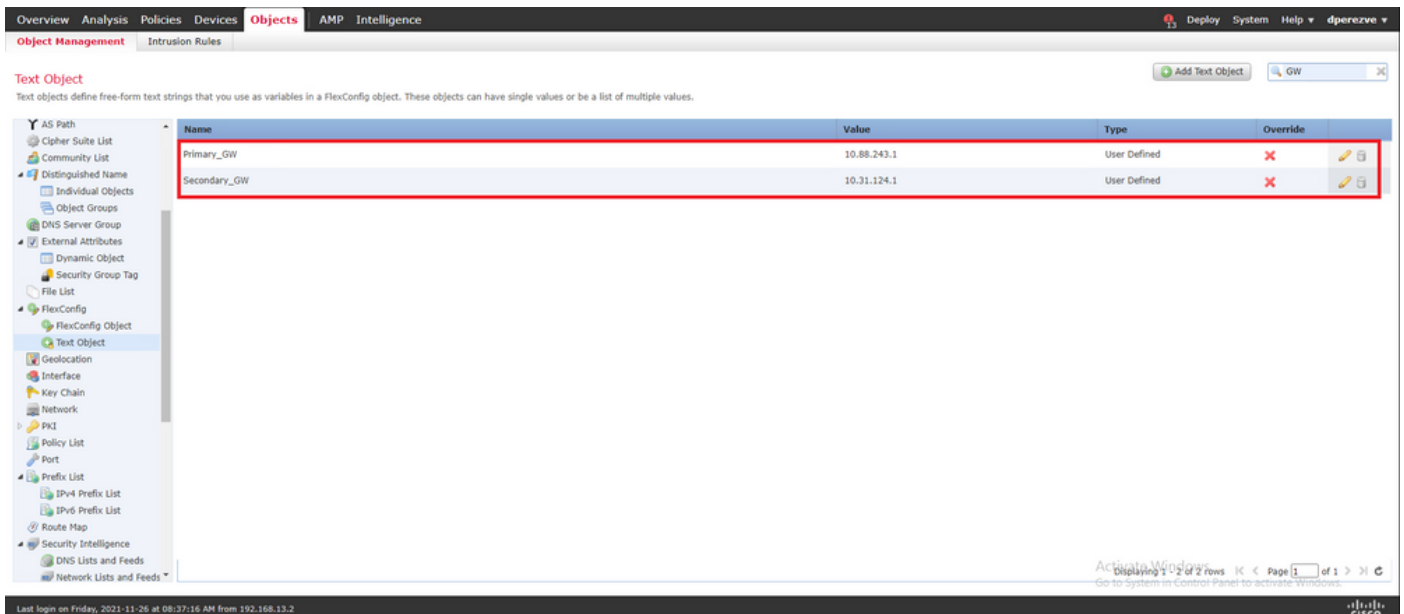


خسنلا ةرئادىل ع ةرابعلل ةرمل ا هذو ،نات نئك عاشنإل ىرخأ ةرم Add Text Object رقنلا يطايتحال.

Save . رقن او بسانم ال IP ناو نعو مسال اب دىجال نئك ال ةبعتب مق

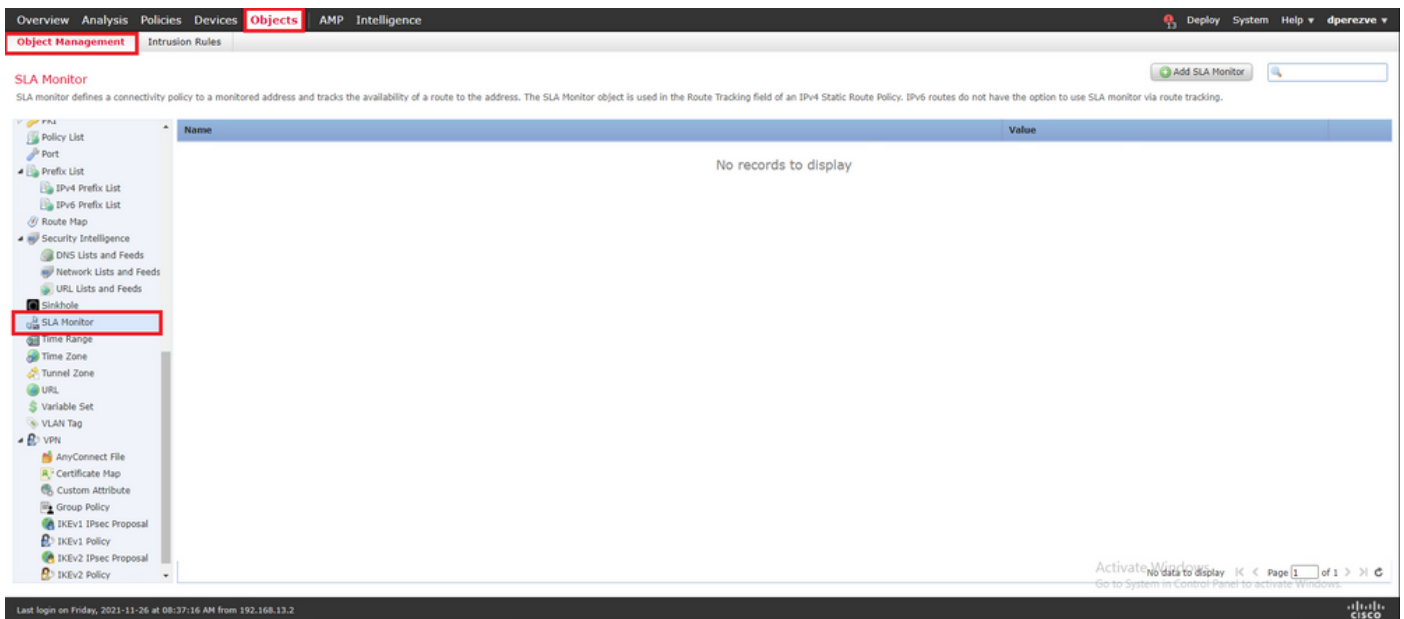


ةبضارتفال تانئك ال عم ةمئاقلا ىل نينئك ال ةفاضل بجي.



SLA شاش نيوكت 4. ةوطخلا

Objects > Object Management لى لقتنا ، ةبواب لكب لاصتالا ةبقارمل ةمدختسملا SLA تانئاك ديحتل تايتوتحملا لودج في SLA Monitor ددحو



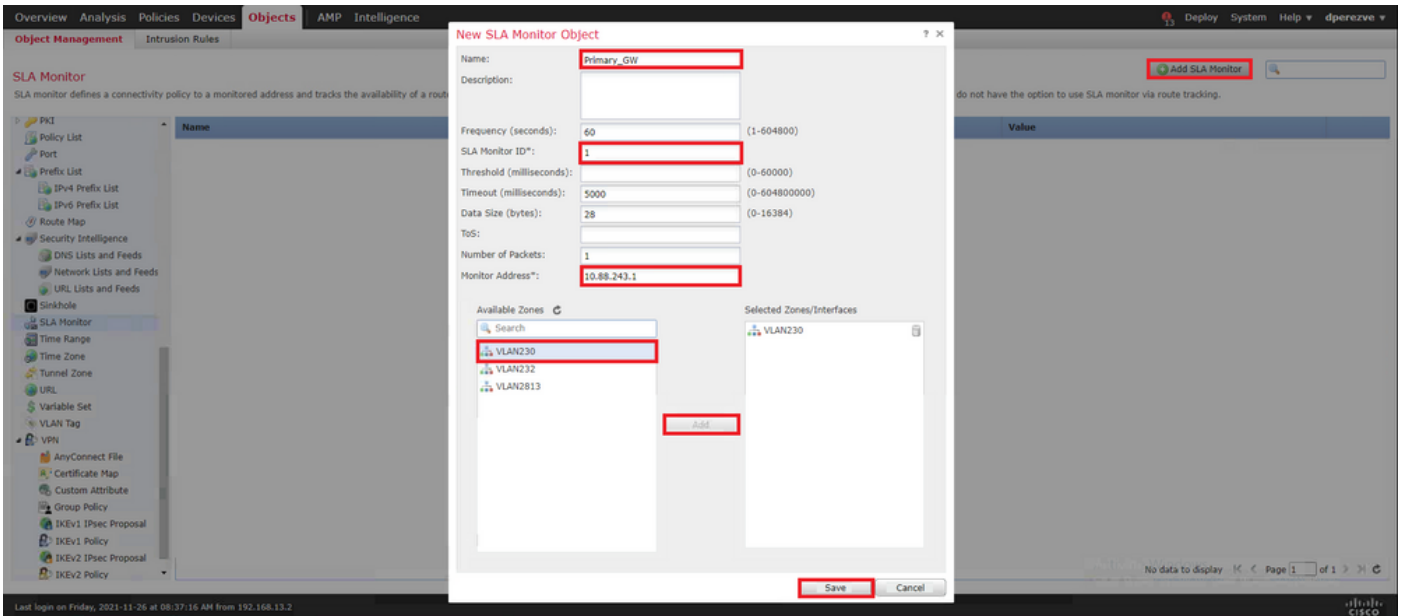
نئاك Add SLA Monitor ددحو

بحي يذلا زاهجلل IP ناووعو ، SLA ةيلعمل فرعم عم مسا ديحتب مق ، راطالا New SLA Monitor في نم لوصول نكمي يتلا ةقطنملا و ةهجاو، (ةيساسالا ةبوابلا ةلاحلا هذه في) هتبقارم زاهجلا لى اهللخ

. Save رقنا . ةبتعل او ةلهملا طبض اضي نكمملا نم ، كلذ لى ةفاضل ابو

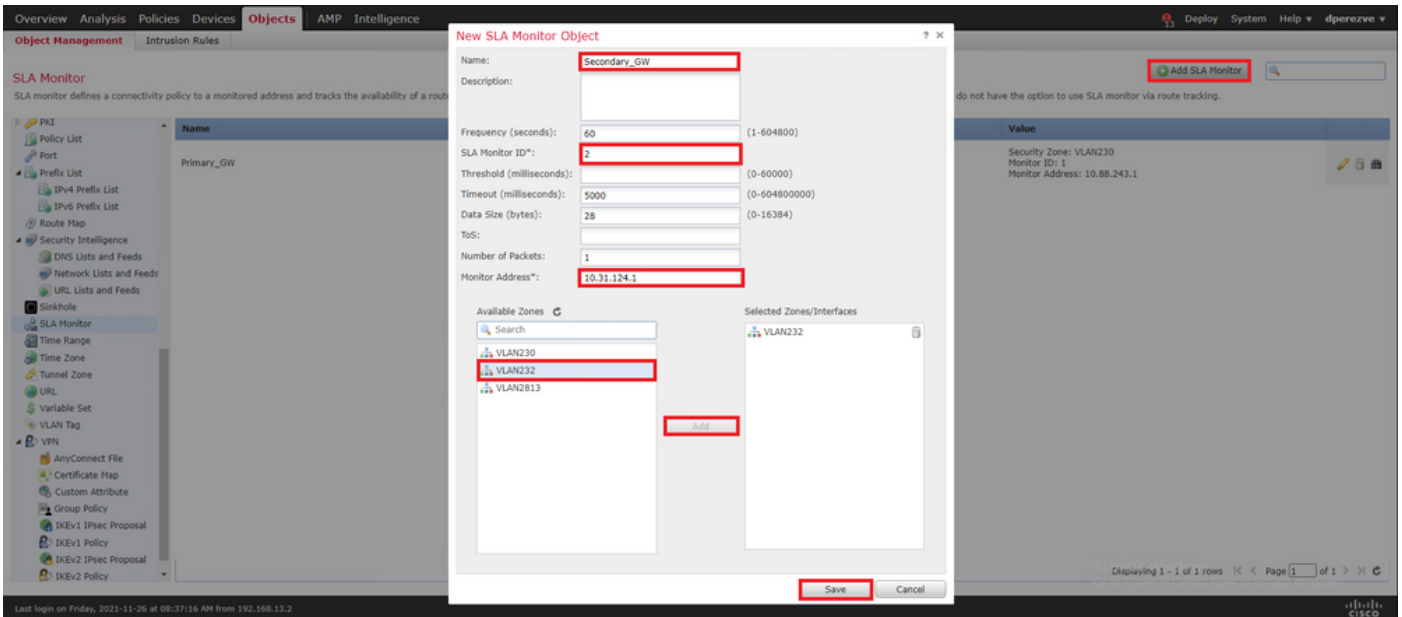
تايلعمل نم ةيلعمل 2000 لى لصي ام (FTD) ةعرسل قئاف لاسرالا جم انرب معدني : ةظحالم 2147483647 لى 1 نم SLA فرعم ميقي حوارتت . (SLA) ةمدخل اوتسم ةيقافتا

تبقوتلا تادحو FTD مدختسي ، ةبتعل او ةلهملا ميقي ديحت متي مل اذا : ةظحالم ةلاح لك في ةيناث لىللم 5000 : ةيضارتفالا

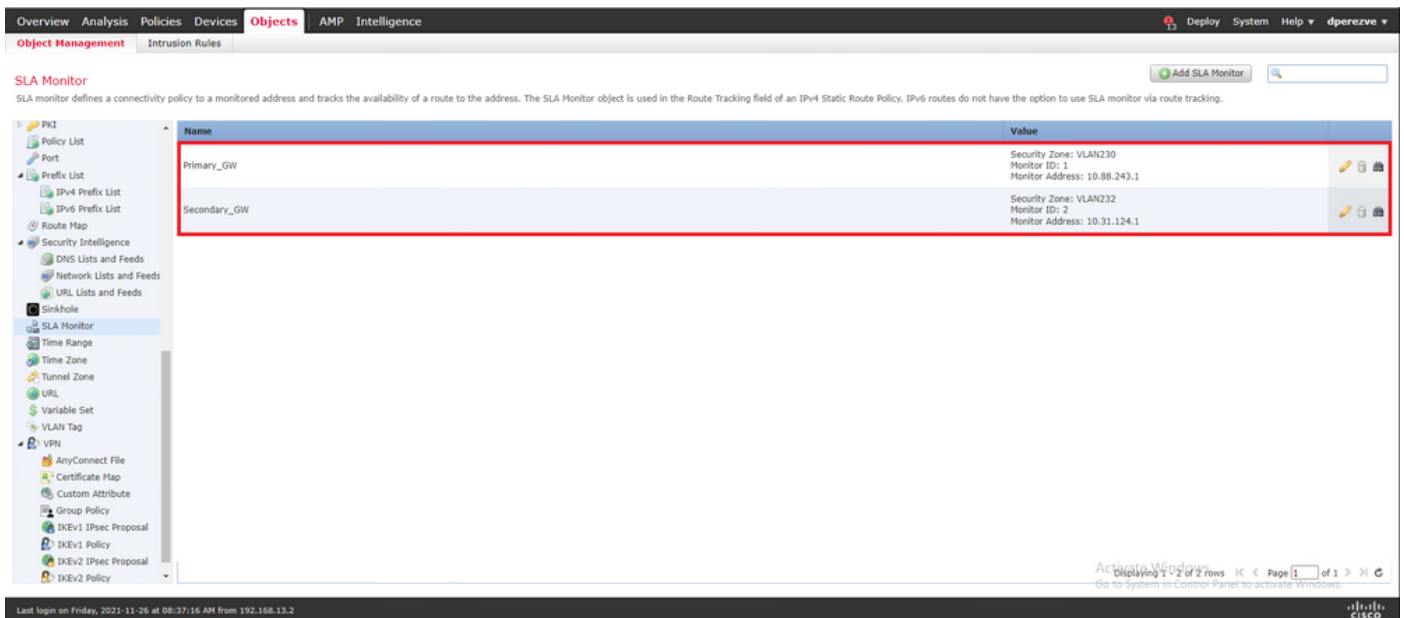


خسننلا ةرئاد ىلع ةرابعلل ةرمللا هذوو ،ناث نئلك ءاشنال ىرخأ ةرم رز Add SLA Monitor دح يطايتحالا .

فرعمللا نع SLA فرعم فال تخأ نم دكأتو ، ةبس انملا تامولعم لابل دي دجلال نئلكلا ةئبعتب مق تاريغتلا ظفحا مث ، ةيساسالا ةابولابل صاخلا .



ةمئاقلا ىلا نينئلكلا ةفاضلا بجي .

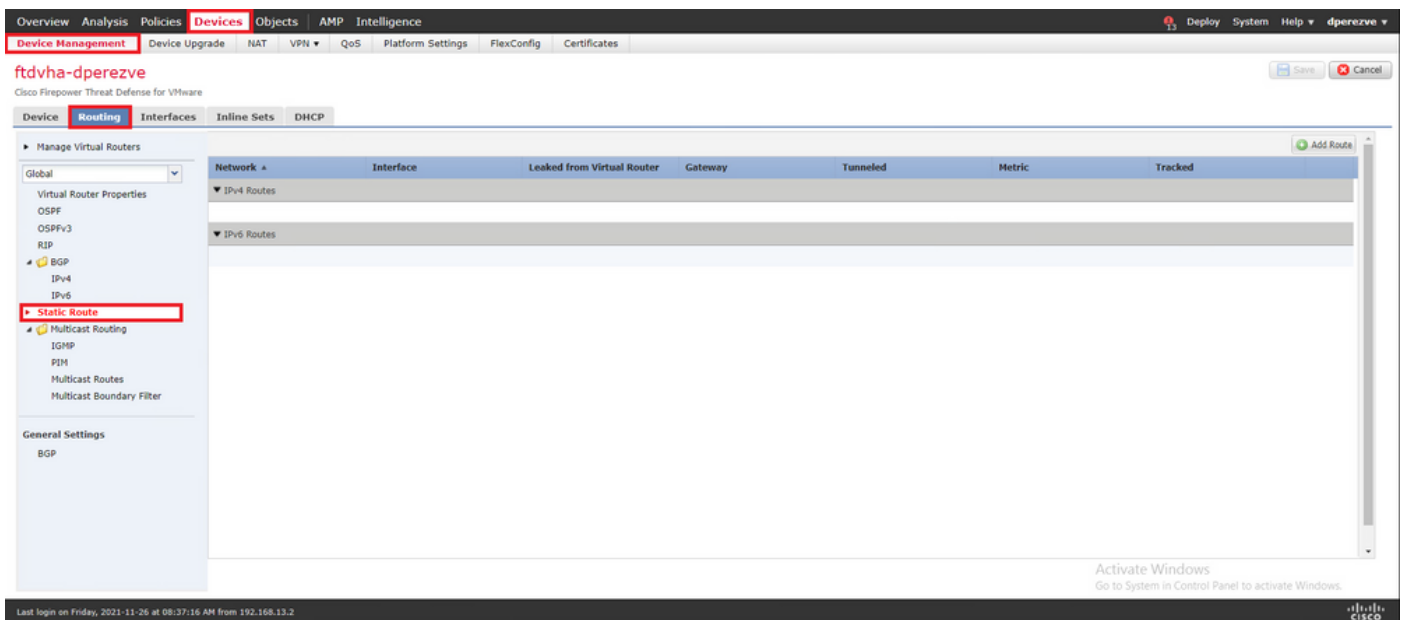


راسم الراسم ل تاراسم ل نيوكت 4. ةوطخ ل

SLA تالوكتو رربب اهطبرو ةبابو ل كل راسم دي دحتب مق ، IP SLA تانئاك ءاشن ا درجمب

نم هيجوت ل ا عيمج ذيفنت متي) ج راخ ل ا ل ا ل ا نم ايل عف ل اصتال تاراسم ل ا هذ رفوت الو تايقافات ل ل ا ل نم تارابع ل ا ل اصتال ا ب قعتب موقت نأ مزلي ، كل ذ نم ال دبو ، (PBR ل ل ا ل (SLAs) ةمدخ ل ا يوتسم

دوجوم ل ا FTD ريرحتب مق ، Devices > Device Management ا ل ل قتنا ، ةتبات ل ا تاراسم ل نيوكت ل بيوت ةمالع Routing نمض تايتوحتم ل ا لودج في Static Route دحو و لوانتم ل ا في

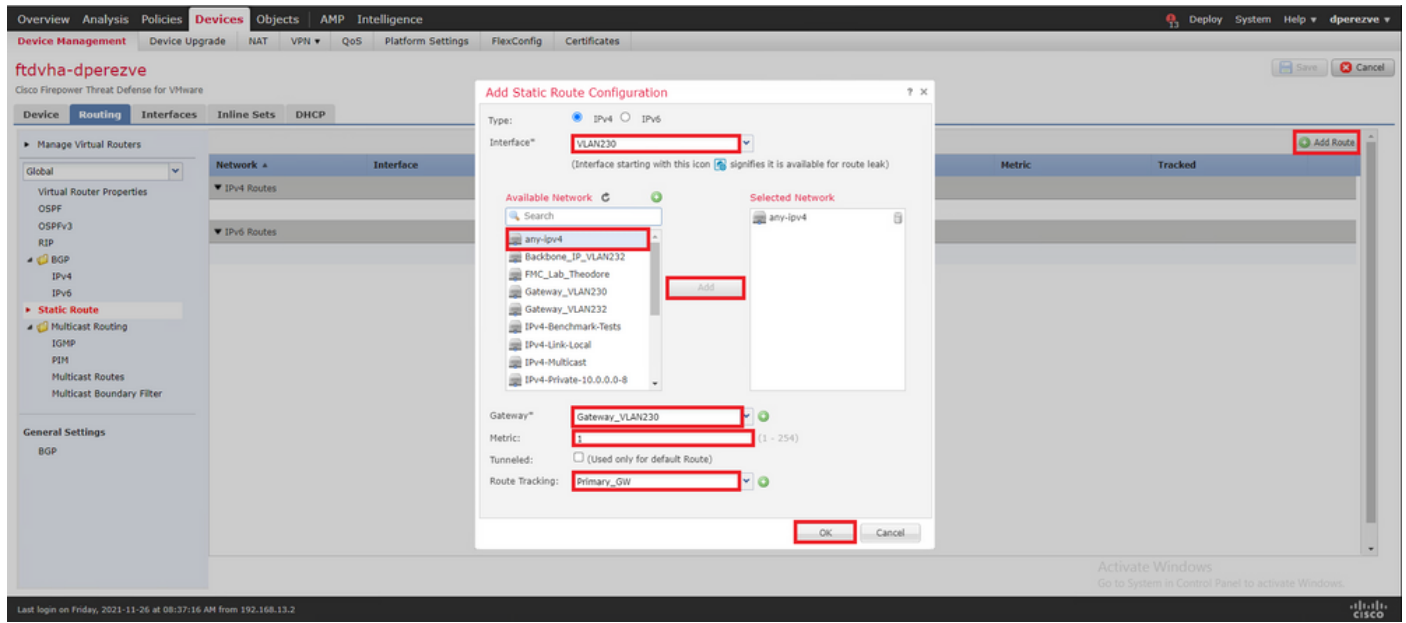


نأ بجي يت ل ا ةهجاو ل ا مسا دح ، ةهجاو ل ا في ةلدسنم ةذفان في Add Static Route Configuration في اهل ل ا ل نم لوصول ل ا ل باق ةيساس ل ا ةبابو ل ا نوكت

طاقس ا Gateway في ةيساس ل ا ةبابو ل ا و ةهجو ل ا ةكبش ل ا دح م

يت ل ا ةيساس ل ا ةرابع ل ل SLA تانئاك دحو و تال ف ا ل ا ب مق Route Track في و راسم ل ل ا س ا يقم دي دحتب ةوطخ ل ا في ا ءاشن ا م 3.

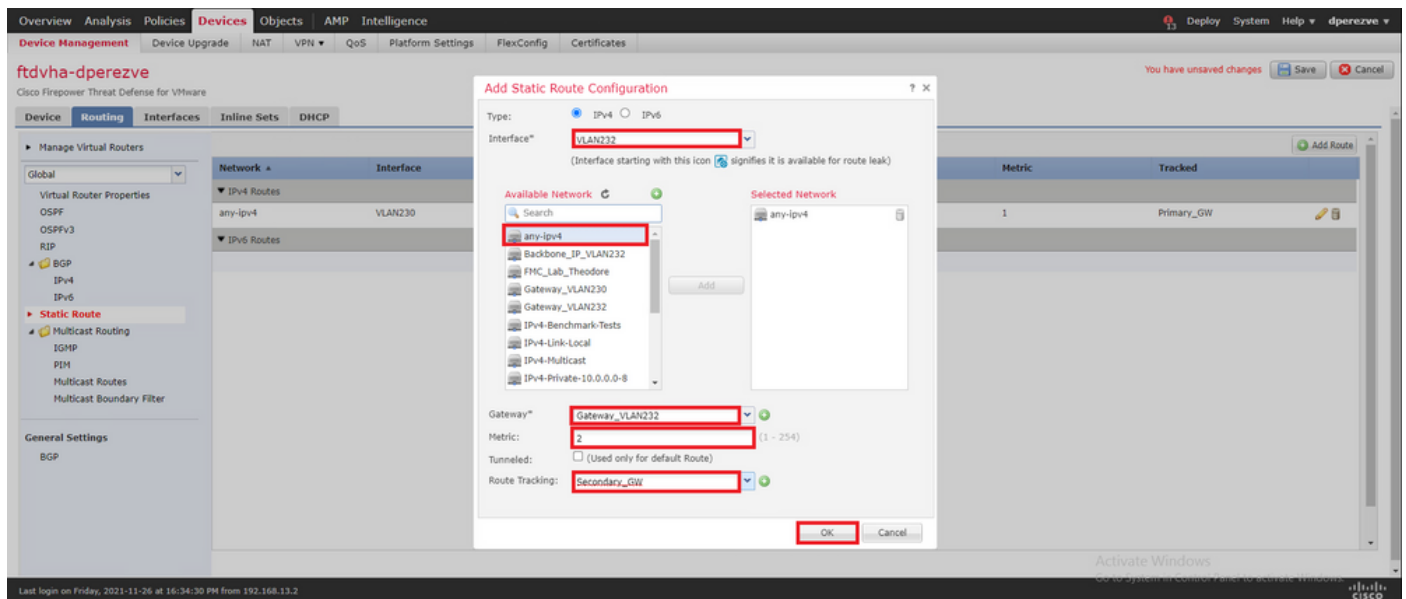
ديجىل راسملا ةفاضال قفاوم قوف رقنا.



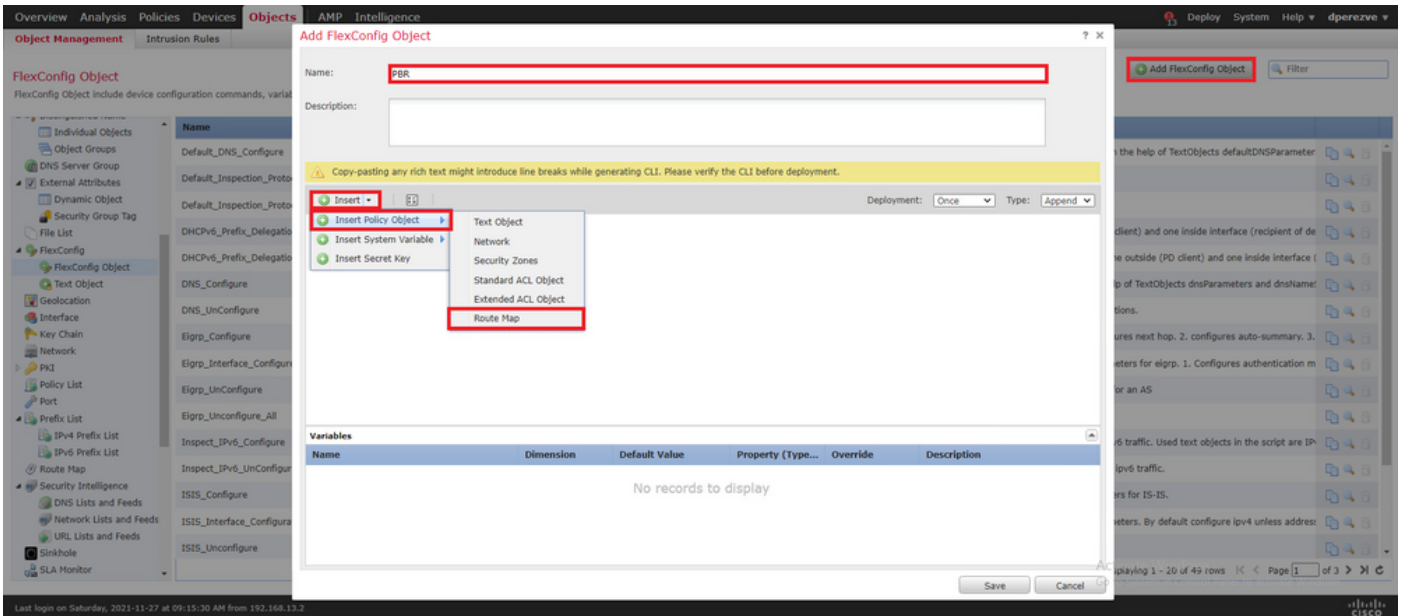
يطايتحال خسنلا ةرابعل نا ثبات راسم نيوكت بجي.

ديجىل تبات راسم ديحتل Add Route رقنا.

نامضو يطايتحال خسنلا ةبابب ةصاخلا تامولعمل مادختساب Add Static Route Configuration علم لوال راسملا يف هنيوكت مت يذلا نم ىلعأ راسملا اذه سايق نوكي نا.

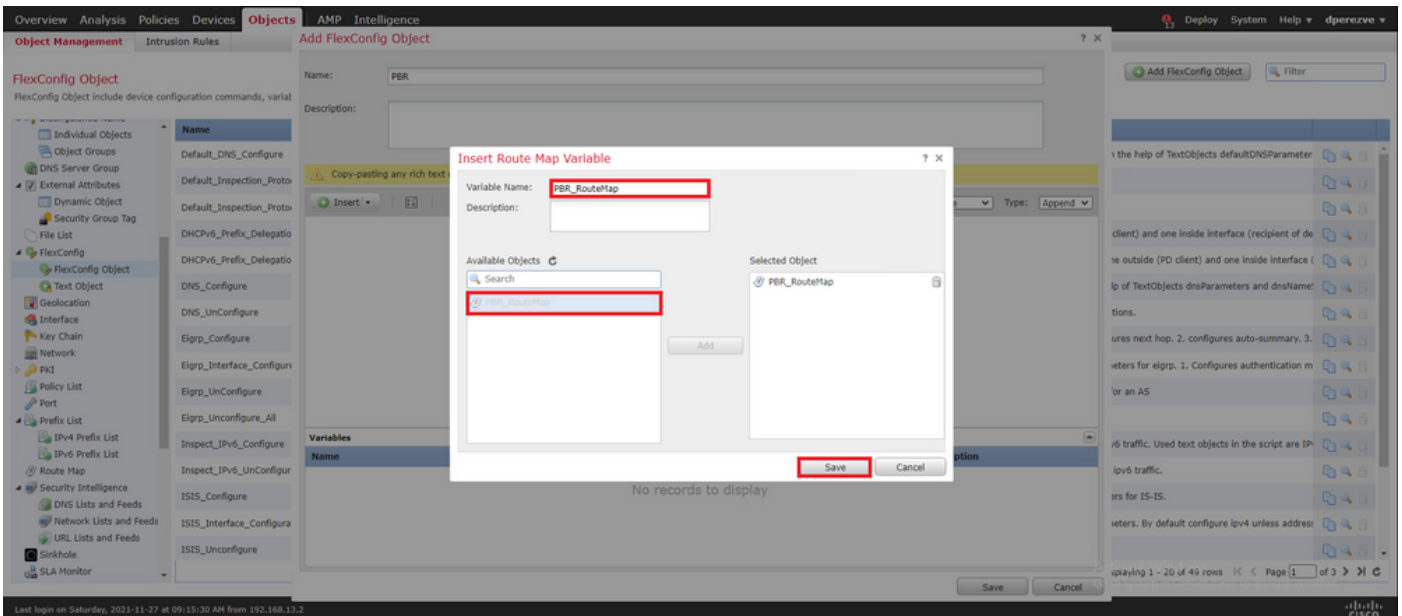


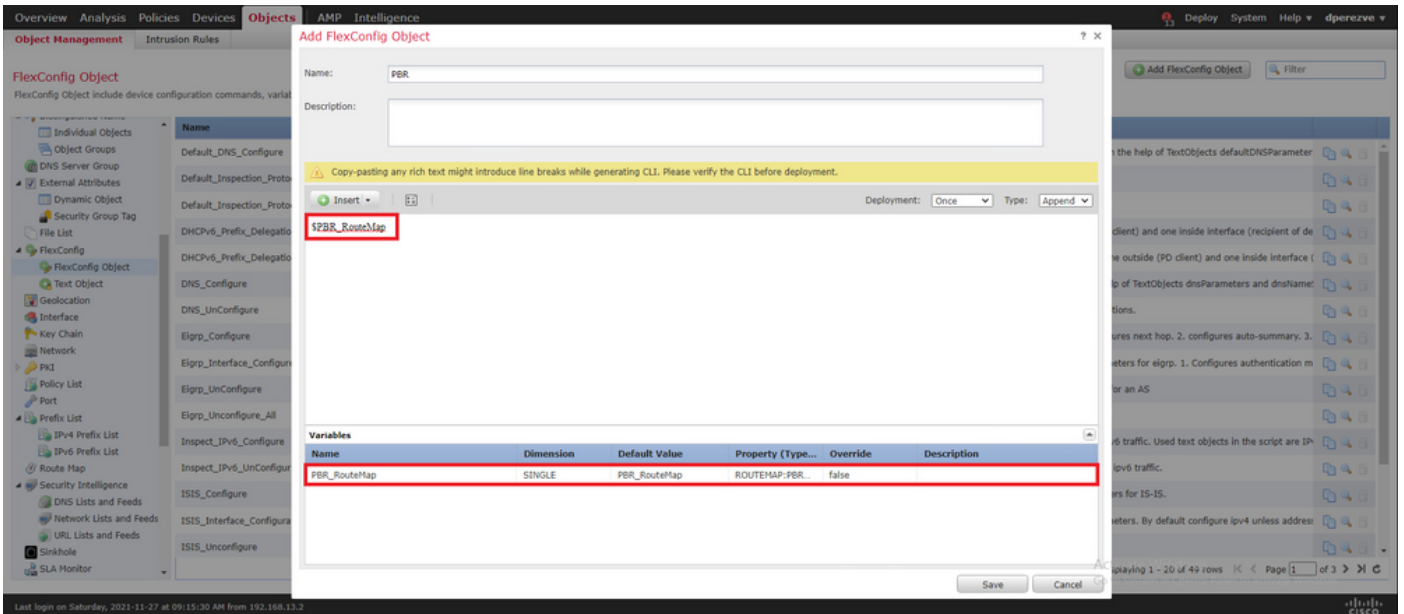
ةمئاقلا ىل نيراسملا ةفاضل بجي.



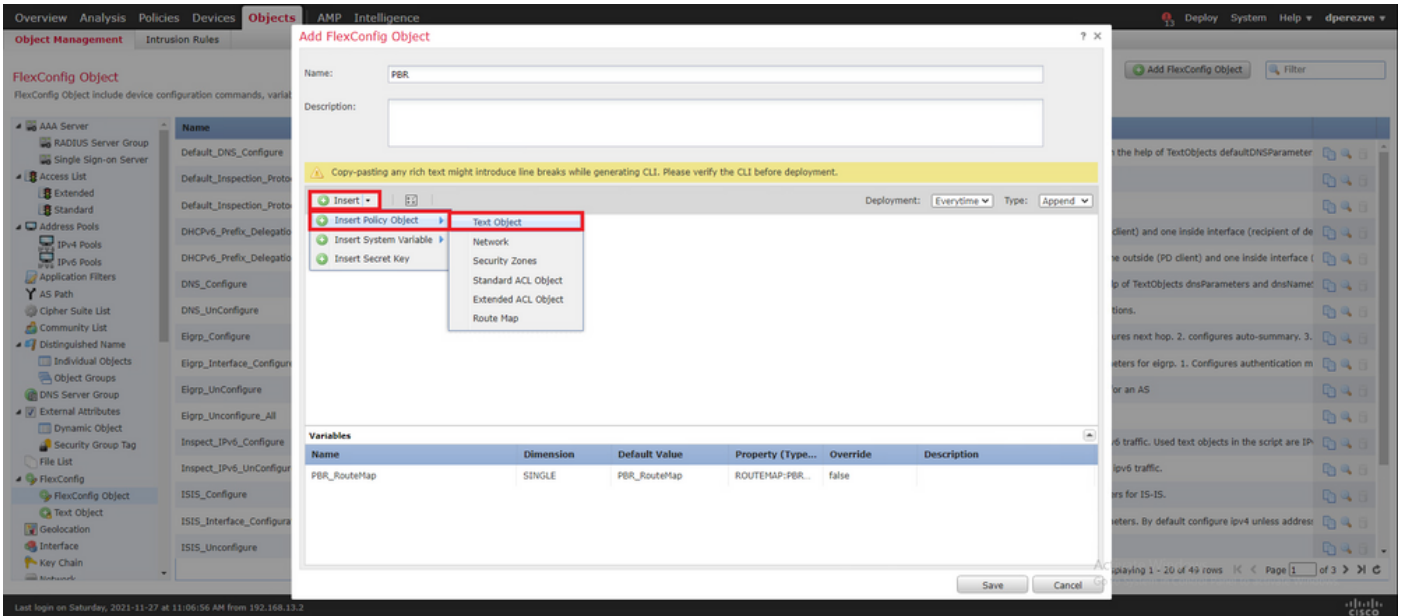
في هؤاشن إمت يذلا PBR نئاك ددحو ريغتم ل م س ا ن ي ع ت ب م ق **Insert Route Map Variable** في 2. ةوطخلال

FlexConfig نئاك نم عزك راسم ل ةطيرخ ةفاضال **Save** رقنا



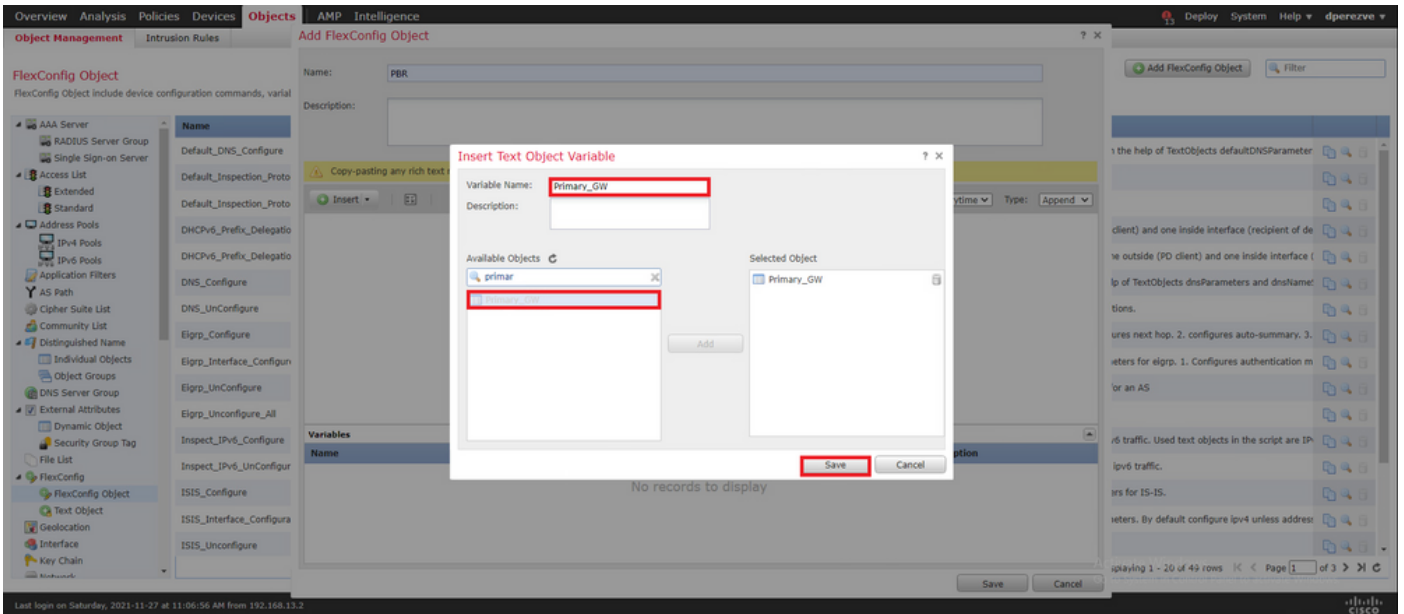


لك لثمت يتي ال FlexConfig صن تانئك ة فاضا بجي ، راسملا ة طرخ ري غتم ىل ة فاضا ال اب
 Insert > Insert Policy Object > Text Object .

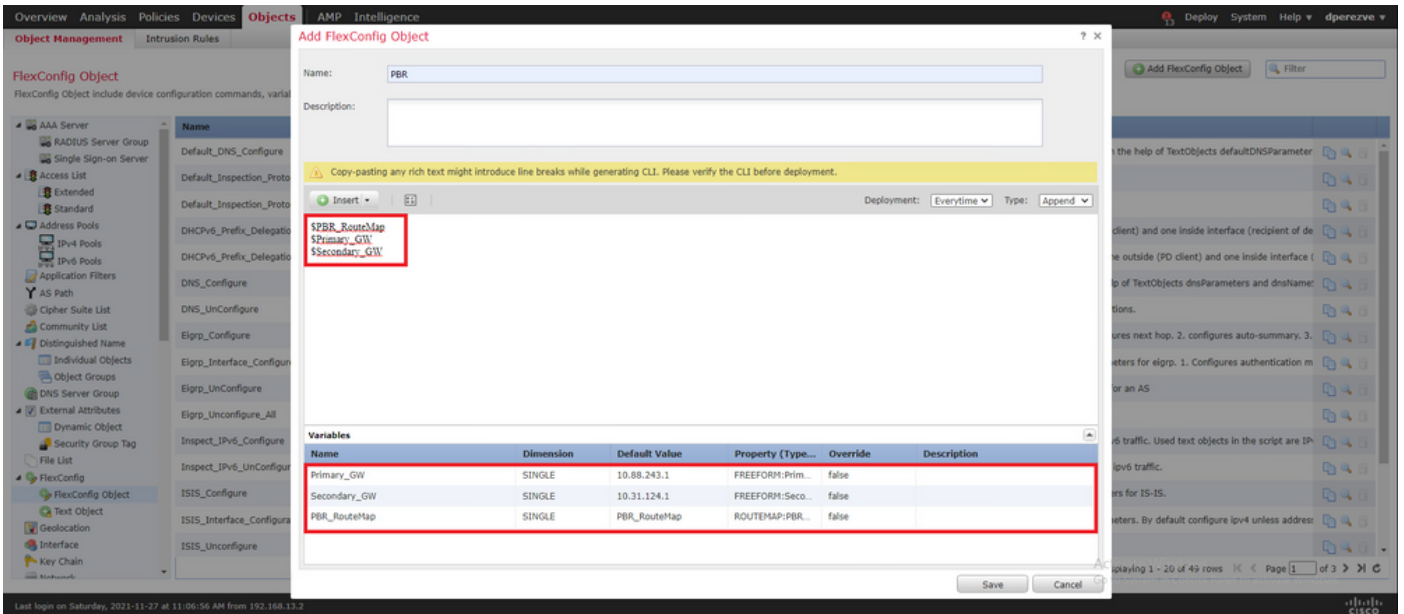


لثمي يذلا صنلا نئك دجو ري غتم لملل مسا ني عتب ة ذفان ال موقت Insert Text Object Variable في
 3. ة و ط خ ل ا ي ف ة فر عم ل ا ي س ا س ا ل ا ة ا و ب ل ل

FlexConfig نئك ىل ة فاضا ال رز Save رقنا



قاحل بجي، ةيلمعلا ةيانه في .يطاي تحال خسنلا ةرابع ل ةريخألا تاوطخلال هذه ررك
FlexConfig نئاكب ني ريرغتملا

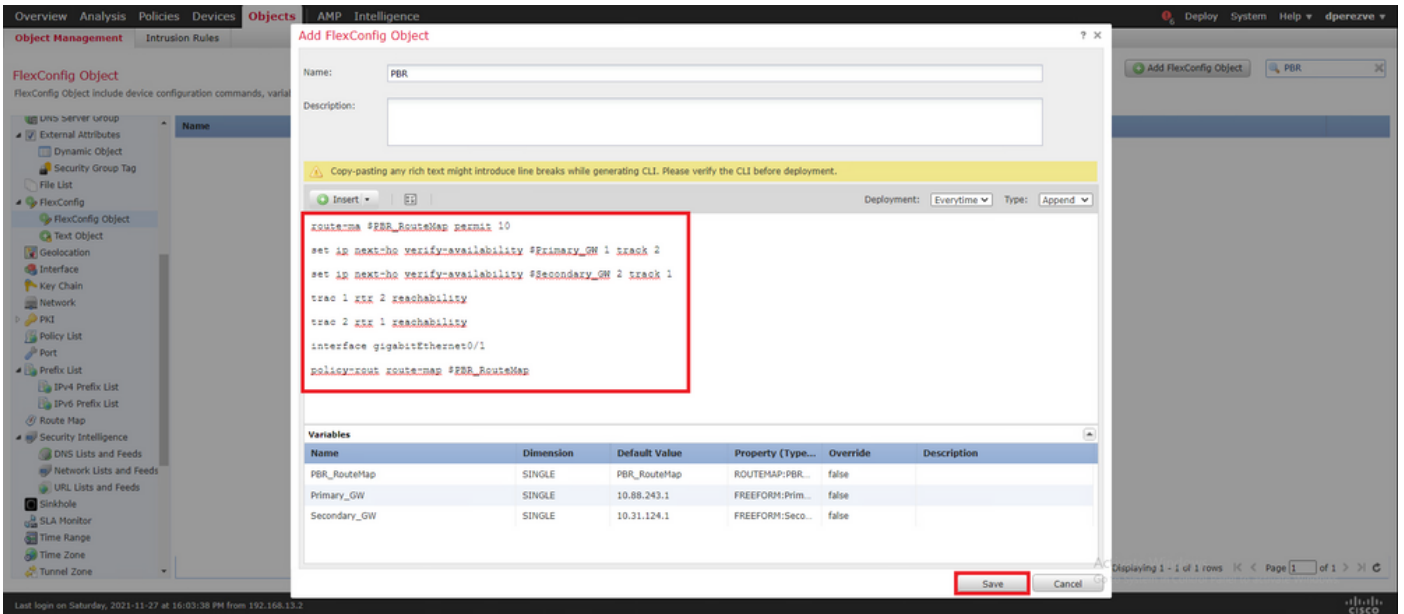


قباطتي نأ بجي Cisco ASA في ةدوجوملا اهسفن يه PBR ني وكتل ةغايصلال نوكت نأ بجي
هذه في 10) 2 ةوطخلال في هنيوكت تم يذلا مقرلا عم راسملا ةطيرخل يلسلسلستلا مقرلا
SLA اتفرعم لىل ةفاضلإاب (ةلالح).

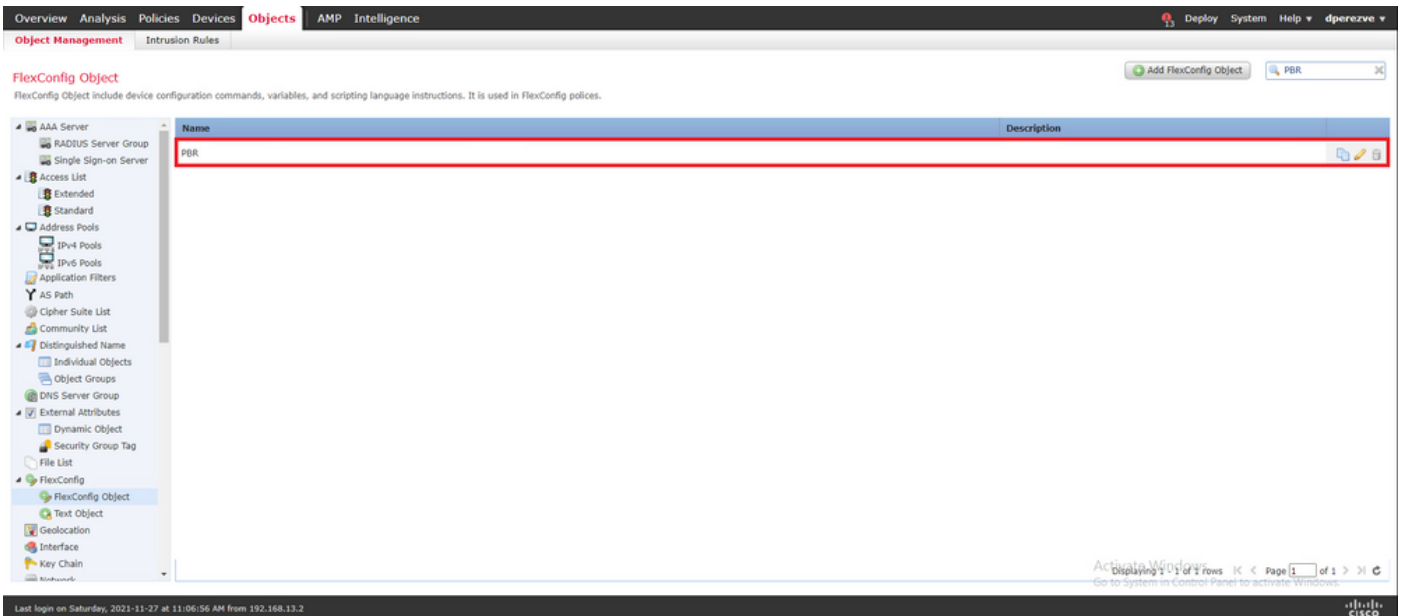
بجي set ip next-hop verify-availability نم ققحتلل PBR ني وكتل
رمألا مادختسا.

policy-route route-map مادختسا VLAN2813 ةلالحال هذه في ،ةيلخاللا ةهجاوولا لىل ع راسملا ةطيرخ قي ببطت بجي
للكشت نراقلل تحت رمأ route-map.

نيوكتل لامتك دنع Save ررنا



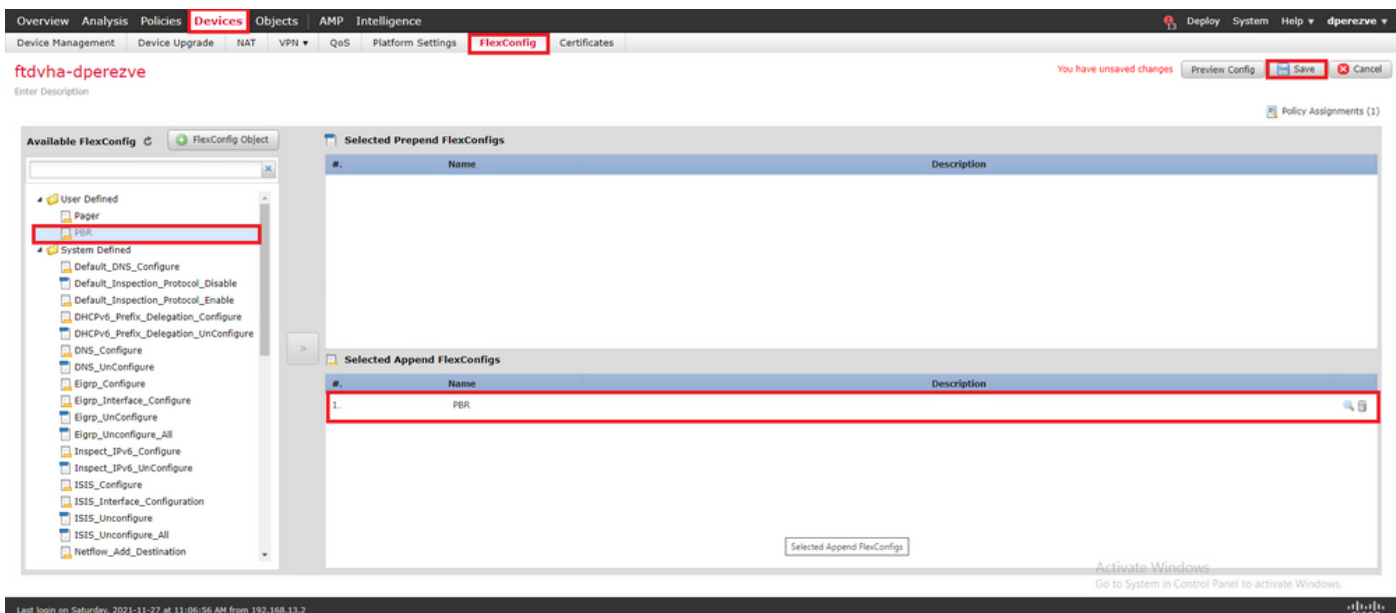
ةمئاقلا لىل FlexConfig نئاك ةفاضل بجي.



FlexConfig ةسايسل FlexConfig نئاك نيعة 6 ةوطخلل

ةحاتملا FlexConfig ةسايس ريرحتو FlexConfig > Devices لىل لقتنا

رشنو ،تاريغيغتلا ظفحو ،تايوتحمل لودج Available FlexConfig في FlexConfig نئاك دح
لىل عتاريغيغتلا



تحصيلنا نم ققحتلا

بِقارملا ةزهجالا ىلإ مظتنملا ICMP ىدص بِلط FTD لسري نأ بجي، رشنلا اءاتنا دعب ةيساسال ةباوبلا ىلإ عبتتم راسم ةفاضل بجي، اءانثالا هذه في. لوصول ةيناكم نامضل لىل هجوتلا لودج ىلإ.

```
firepower# show route-map route-map PBR_RouteMap, permit, sequence 10 Match clauses: ip address (access-lists): PBR_ACL Set clauses: ip next-hop verify-availability 10.88.243.1 1 track 2 [up] ip next-hop verify-availability 10.31.124.1 2 track 1 [up]
firepower# show route Codes: L - local, C - connected, S - static, R - RIP, M - mobile, B - BGP D - EIGRP, EX - EIGRP external, O - OSPF, IA - OSPF inter area N1 - OSPF NSSA external type 1, N2 - OSPF NSSA external type 2 E1 - OSPF external type 1, E2 - OSPF external type 2, V - VPN i - IS-IS, su - IS-IS summary, L1 - IS-IS level-1, L2 - IS-IS level-2 ia - IS-IS inter area, * - candidate default, U - per-user static route o - ODR, P - periodic downloaded static route, + - replicated route SI - Static InterVRF
Gateway of last resort is 10.88.243.1 to network 0.0.0.0 S* 0.0.0.0 0.0.0.0 [1/0] via 10.88.243.1, VLAN230 C 10.31.124.0 255.255.255.0 is directly connected, VLAN232 L 10.31.124.25 255.255.255.255 is directly connected, VLAN232 C 10.88.243.0 255.255.255.0 is directly connected, VLAN230 L 10.88.243.60 255.255.255.255 is directly connected, VLAN230 C 192.168.13.0 255.255.255.0 is directly connected, VLAN2813 L 192.168.13.1 255.255.255.255 is directly connected, VLAN2813
```

نم تانايبلا رورم ةكرح هيجوت ةءاعا بجي، ليغشتلا ديقي ةيساسال ةباوبلاب لاصلتالا نأل ةيساسال ISP ةرئاد لالخ نم (VLAN2813) ةيخادلا ةيعرفلا ةكبشلا.

```
firepower# packet-tracer input vlan2813 icmp 192.168.13.2 8 0 8.8.8.8 detailed
Phase: 1 Type: PBR-LOOKUP Subtype: policy-route Result: ALLOW Config: route-map PBR_RouteMap permit 10 match ip address PBR_ACL set ip next-hop verify-availability 10.88.243.1 1 track 2 set ip next-hop verify-availability 10.31.124.1 2 track 1
Additional Information: Matched route-map PBR_RouteMap, sequence 10, permit Found next-hop 10.88.243.1 using egress ifc VLAN230
Phase: 2 Type: ACCESS-LIST Subtype: log Result: ALLOW Config: access-group CSM_FW_ACL_ global access-list CSM_FW_ACL_ advanced trust ip ifc VLAN2813 object VLAN2813 any rule-id 268437505 event-log flow-end access-list CSM_FW_ACL_ remark rule-id 268437505: PREFILTER POLICY: ftdvha-dperezve access-list CSM_FW_ACL_ remark rule-id 268437505: RULE: Internet_Traffic
Additional Information: Forward Flow based lookup yields rule: in id=0x1461708f7a90, priority=12, domain=permit, trust hits=172250, user_data=0x146183cf8380, cs_id=0x0, use_real_addr, flags=0x0, protocol=0 src ip/id=192.168.13.0, mask=255.255.255.0, port=0, tag=any, ifc=VLAN2813(vrfid:0) dst ip/id=0.0.0.0, mask=0.0.0.0, port=0, tag=any, ifc=any, vlan=0, dscp=0x0, nsg_id=none input_ifc=any, output_ifc=any
Phase: 3 Type: CONN-SETTINGS Subtype: Result: ALLOW Config: class-map class-default match any policy-map global_policy class class-default set connection
```

advanced-options UM_STATIC_TCP_MAP service-policy global_policy global Additional Information:
Forward Flow based lookup yields rule: in id=0x146170d472a0, priority=7, domain=conn-set,
deny=false hits=176701, user_data=0x146170d413f0, cs_id=0x0, use_real_addr, flags=0x0,
protocol=0 src ip/id=0.0.0.0, mask=0.0.0.0, port=0, tag=any dst ip/id=0.0.0.0, mask=0.0.0.0,
port=0, tag=any, dscp=0x0, nsg_id=none input_ifc=VLAN2813(vrfid:0), output_ifc=any Phase: 4
Type: NAT Subtype: Result: ALLOW Config: nat (VLAN2813,VLAN230) after-auto source dynamic
VLAN2813 interface Additional Information: Forward Flow based lookup yields rule: in
id=0x146170013860, priority=6, domain=nat, deny=false hits=168893, user_data=0x1461af306540,
cs_id=0x0, flags=0x0, protocol=0 src ip/id=192.168.13.0, mask=255.255.255.0, port=0, tag=any dst
ip/id=0.0.0.0, mask=0.0.0.0, port=0, tag=any, dscp=0x0, nsg_id=none input_ifc=VLAN2813(vrfid:0),
output_ifc=VLAN230(vrfid:0) Phase: 5 Type: NAT Subtype: per-session Result: ALLOW Config:
Additional Information: Forward Flow based lookup yields rule: in id=0x1461af9c3320, priority=0,
domain=nat-per-session, deny=true hits=188129, user_data=0x0, cs_id=0x0, reverse, use_real_addr,
flags=0x0, protocol=0 src ip/id=0.0.0.0, mask=0.0.0.0, port=0, tag=any dst ip/id=0.0.0.0,
mask=0.0.0.0, port=0, tag=any, dscp=0x0, nsg_id=none input_ifc=any, output_ifc=any Phase: 6
Type: IP-OPTIONS Subtype: Result: ALLOW Config: Additional Information: Forward Flow based
lookup yields rule: in id=0x1461aff02da0, priority=0, domain=inspect-ip-options, deny=true
hits=176710, user_data=0x0, cs_id=0x0, reverse, flags=0x0, protocol=0 src ip/id=0.0.0.0,
mask=0.0.0.0, port=0, tag=any dst ip/id=0.0.0.0, mask=0.0.0.0, port=0, tag=any, dscp=0x0,
nsg_id=none input_ifc=VLAN2813(vrfid:0), output_ifc=any Phase: 7 Type: ACCESS-LIST Subtype: log
Result: ALLOW Config: access-group CSM_FW_ACL_ global access-list CSM_FW_ACL_ advanced trust ip
ifc VLAN2813 object VLAN2813 any rule-id 268437505 event-log flow-end access-list CSM_FW_ACL_
remark rule-id 268437505: PREFILTER POLICY: ftdvha-dperezve access-list CSM_FW_ACL_ remark rule-
id 268437505: RULE: Internet_Traffic Additional Information: Forward Flow based lookup yields
rule: in id=0x1461708f7a90, priority=12, domain=permit, trust hits=172250,
user_data=0x146183cf8380, cs_id=0x0, use_real_addr, flags=0x0, protocol=0 src
ip/id=192.168.13.0, mask=255.255.255.0, port=0, tag=any, ifc=VLAN2813(vrfid:0) dst
ip/id=0.0.0.0, mask=0.0.0.0, port=0, tag=any, ifc=any, vlan=0, dscp=0x0, nsg_id=none
input_ifc=any, output_ifc=any Phase: 8 Type: CONN-SETTINGS Subtype: Result: ALLOW Config: class-
map class-default match any policy-map global_policy class class-default set connection
advanced-options UM_STATIC_TCP_MAP service-policy global_policy global Additional Information:
Forward Flow based lookup yields rule: in id=0x146170d472a0, priority=7, domain=conn-set,
deny=false hits=176702, user_data=0x146170d413f0, cs_id=0x0, use_real_addr, flags=0x0,
protocol=0 src ip/id=0.0.0.0, mask=0.0.0.0, port=0, tag=any dst ip/id=0.0.0.0, mask=0.0.0.0,
port=0, tag=any, dscp=0x0, nsg_id=none input_ifc=VLAN2813(vrfid:0), output_ifc=any Phase: 9
Type: NAT Subtype: Result: ALLOW Config: nat (VLAN2813,VLAN230) after-auto source dynamic
VLAN2813 interface Additional Information: Forward Flow based lookup yields rule: in
id=0x146170013860, priority=6, domain=nat, deny=false hits=168893, user_data=0x1461af306540,
cs_id=0x0, flags=0x0, protocol=0 src ip/id=192.168.13.0, mask=255.255.255.0, port=0, tag=any dst
ip/id=0.0.0.0, mask=0.0.0.0, port=0, tag=any, dscp=0x0, nsg_id=none input_ifc=VLAN2813(vrfid:0),
output_ifc=VLAN230(vrfid:0) Phase: 10 Type: NAT Subtype: per-session Result: ALLOW Config:
Additional Information: Forward Flow based lookup yields rule: in id=0x1461af9c3320, priority=0,
domain=nat-per-session, deny=true hits=188129, user_data=0x0, cs_id=0x0, reverse, use_real_addr,
flags=0x0, protocol=0 src ip/id=0.0.0.0, mask=0.0.0.0, port=0, tag=any dst ip/id=0.0.0.0,
mask=0.0.0.0, port=0, tag=any, dscp=0x0, nsg_id=none input_ifc=any, output_ifc=any Phase: 11
Type: IP-OPTIONS Subtype: Result: ALLOW Config: Additional Information: Forward Flow based
lookup yields rule: in id=0x1461aff02da0, priority=0, domain=inspect-ip-options, deny=true
hits=176710, user_data=0x0, cs_id=0x0, reverse, flags=0x0, protocol=0 src ip/id=0.0.0.0,
mask=0.0.0.0, port=0, tag=any dst ip/id=0.0.0.0, mask=0.0.0.0, port=0, tag=any, dscp=0x0,
nsg_id=none input_ifc=VLAN2813(vrfid:0), output_ifc=any Phase: 12 Type: ACCESS-LIST Subtype: log
Result: ALLOW Config: access-group CSM_FW_ACL_ global access-list CSM_FW_ACL_ advanced trust ip
ifc VLAN2813 object VLAN2813 any rule-id 268437505 event-log flow-end access-list CSM_FW_ACL_
remark rule-id 268437505: PREFILTER POLICY: ftdvha-dperezve access-list CSM_FW_ACL_ remark rule-
id 268437505: RULE: Internet_Traffic Additional Information: Forward Flow based lookup yields
rule: in id=0x1461708f7a90, priority=12, domain=permit, trust hits=172250,
user_data=0x146183cf8380, cs_id=0x0, use_real_addr, flags=0x0, protocol=0 src
ip/id=192.168.13.0, mask=255.255.255.0, port=0, tag=any, ifc=VLAN2813(vrfid:0) dst
ip/id=0.0.0.0, mask=0.0.0.0, port=0, tag=any, ifc=any, vlan=0, dscp=0x0, nsg_id=none
input_ifc=any, output_ifc=any Phase: 13 Type: CONN-SETTINGS Subtype: Result: ALLOW Config:
class-map class-default match any policy-map global_policy class class-default set connection
advanced-options UM_STATIC_TCP_MAP service-policy global_policy global Additional Information:
Forward Flow based lookup yields rule: in id=0x146170d472a0, priority=7, domain=conn-set,
deny=false hits=176702, user_data=0x146170d413f0, cs_id=0x0, use_real_addr, flags=0x0,
protocol=0 src ip/id=0.0.0.0, mask=0.0.0.0, port=0, tag=any dst ip/id=0.0.0.0, mask=0.0.0.0,

port=0, tag=any, dscp=0x0, nsg_id=none input_ifc=VLAN2813(vrfid:0), output_ifc=any Phase: 14
Type: NAT Subtype: Result: ALLOW Config: nat (VLAN2813,VLAN230) after-auto source dynamic
VLAN2813 interface Additional Information: Forward Flow based lookup yields rule: in
id=0x146170013860, priority=6, domain=nat, deny=false hits=168894, user_data=0x1461af306540,
cs_id=0x0, flags=0x0, protocol=0 src ip/id=192.168.13.0, mask=255.255.255.0, port=0, tag=any dst
ip/id=0.0.0.0, mask=0.0.0.0, port=0, tag=any, dscp=0x0, nsg_id=none input_ifc=VLAN2813(vrfid:0),
output_ifc=VLAN230(vrfid:0) Phase: 15 Type: NAT Subtype: per-session Result: ALLOW Config:
Additional Information: Forward Flow based lookup yields rule: in id=0x1461af9c3320, priority=0,
domain=nat-per-session, deny=true hits=188129, user_data=0x0, cs_id=0x0, reverse, use_real_addr,
flags=0x0, protocol=0 src ip/id=0.0.0.0, mask=0.0.0.0, port=0, tag=any dst ip/id=0.0.0.0,
mask=0.0.0.0, port=0, tag=any, dscp=0x0, nsg_id=none input_ifc=any, output_ifc=any Phase: 16
Type: IP-OPTIONS Subtype: Result: ALLOW Config: Additional Information: Forward Flow based
lookup yields rule: in id=0x1461aff02da0, priority=0, domain=inspect-ip-options, deny=true
hits=176710, user_data=0x0, cs_id=0x0, reverse, flags=0x0, protocol=0 src ip/id=0.0.0.0,
mask=0.0.0.0, port=0, tag=any dst ip/id=0.0.0.0, mask=0.0.0.0, port=0, tag=any, dscp=0x0,
nsg_id=none input_ifc=VLAN2813(vrfid:0), output_ifc=any Phase: 17 Type: ACCESS-LIST Subtype: log
Result: ALLOW Config: access-group CSM_FW_ACL_ global access-list CSM_FW_ACL_ advanced trust ip
ifc VLAN2813 object VLAN2813 any rule-id 268437505 event-log flow-end access-list CSM_FW_ACL_
remark rule-id 268437505: PREFILTER POLICY: ftdvha-dperezve access-list CSM_FW_ACL_ remark rule-
id 268437505: RULE: Internet_Traffic Additional Information: Forward Flow based lookup yields
rule: in id=0x1461708f7a90, priority=12, domain=permit, trust hits=172250,
user_data=0x146183cf8380, cs_id=0x0, use_real_addr, flags=0x0, protocol=0 src
ip/id=192.168.13.0, mask=255.255.255.0, port=0, tag=any, ifc=VLAN2813(vrfid:0) dst
ip/id=0.0.0.0, mask=0.0.0.0, port=0, tag=any, ifc=any, vlan=0, dscp=0x0, nsg_id=none
input_ifc=any, output_ifc=any Phase: 18 Type: CONN-SETTINGS Subtype: Result: ALLOW Config:
class-map class-default match any policy-map global_policy class class-default set connection
advanced-options UM_STATIC_TCP_MAP service-policy global_policy global Additional Information:
Forward Flow based lookup yields rule: in id=0x146170d472a0, priority=7, domain=conn-set,
deny=false hits=176702, user_data=0x146170d413f0, cs_id=0x0, use_real_addr, flags=0x0,
protocol=0 src ip/id=0.0.0.0, mask=0.0.0.0, port=0, tag=any dst ip/id=0.0.0.0, mask=0.0.0.0,
port=0, tag=any, dscp=0x0, nsg_id=none input_ifc=VLAN2813(vrfid:0), output_ifc=any Phase: 19
Type: NAT Subtype: Result: ALLOW Config: nat (VLAN2813,VLAN230) after-auto source dynamic
VLAN2813 interface Additional Information: Forward Flow based lookup yields rule: in
id=0x146170013860, priority=6, domain=nat, deny=false hits=168894, user_data=0x1461af306540,
cs_id=0x0, flags=0x0, protocol=0 src ip/id=192.168.13.0, mask=255.255.255.0, port=0, tag=any dst
ip/id=0.0.0.0, mask=0.0.0.0, port=0, tag=any, dscp=0x0, nsg_id=none input_ifc=VLAN2813(vrfid:0),
output_ifc=VLAN230(vrfid:0) Phase: 20 Type: NAT Subtype: per-session Result: ALLOW Config:
Additional Information: Forward Flow based lookup yields rule: in id=0x1461af9c3320, priority=0,
domain=nat-per-session, deny=true hits=188130, user_data=0x0, cs_id=0x0, reverse, use_real_addr,
flags=0x0, protocol=0 src ip/id=0.0.0.0, mask=0.0.0.0, port=0, tag=any dst ip/id=0.0.0.0,
mask=0.0.0.0, port=0, tag=any, dscp=0x0, nsg_id=none input_ifc=any, output_ifc=any Phase: 21
Type: IP-OPTIONS Subtype: Result: ALLOW Config: Additional Information: Forward Flow based
lookup yields rule: in id=0x1461aff02da0, priority=0, domain=inspect-ip-options, deny=true
hits=176710, user_data=0x0, cs_id=0x0, reverse, flags=0x0, protocol=0 src ip/id=0.0.0.0,
mask=0.0.0.0, port=0, tag=any dst ip/id=0.0.0.0, mask=0.0.0.0, port=0, tag=any, dscp=0x0,
nsg_id=none input_ifc=VLAN2813(vrfid:0), output_ifc=any Phase: 22 Type: ACCESS-LIST Subtype: log
Result: ALLOW Config: access-group CSM_FW_ACL_ global access-list CSM_FW_ACL_ advanced trust ip
ifc VLAN2813 object VLAN2813 any rule-id 268437505 event-log flow-end access-list CSM_FW_ACL_
remark rule-id 268437505: PREFILTER POLICY: ftdvha-dperezve access-list CSM_FW_ACL_ remark rule-
id 268437505: RULE: Internet_Traffic Additional Information: Forward Flow based lookup yields
rule: in id=0x1461708f7a90, priority=12, domain=permit, trust hits=172250,
user_data=0x146183cf8380, cs_id=0x0, use_real_addr, flags=0x0, protocol=0 src
ip/id=192.168.13.0, mask=255.255.255.0, port=0, tag=any, ifc=VLAN2813(vrfid:0) dst
ip/id=0.0.0.0, mask=0.0.0.0, port=0, tag=any, ifc=any, vlan=0, dscp=0x0, nsg_id=none
input_ifc=any, output_ifc=any Phase: 23 Type: CONN-SETTINGS Subtype: Result: ALLOW Config:
class-map class-default match any policy-map global_policy class class-default set connection
advanced-options UM_STATIC_TCP_MAP service-policy global_policy global Additional Information:
Forward Flow based lookup yields rule: in id=0x146170d472a0, priority=7, domain=conn-set,
deny=false hits=176702, user_data=0x146170d413f0, cs_id=0x0, use_real_addr, flags=0x0,
protocol=0 src ip/id=0.0.0.0, mask=0.0.0.0, port=0, tag=any dst ip/id=0.0.0.0, mask=0.0.0.0,
port=0, tag=any, dscp=0x0, nsg_id=none input_ifc=VLAN2813(vrfid:0), output_ifc=any Phase: 24
Type: NAT Subtype: Result: ALLOW Config: nat (VLAN2813,VLAN230) after-auto source dynamic
VLAN2813 interface Additional Information: Forward Flow based lookup yields rule: in
id=0x146170013860, priority=6, domain=nat, deny=false hits=168894, user_data=0x1461af306540,

```
cs_id=0x0, flags=0x0, protocol=0 src ip/id=192.168.13.0, mask=255.255.255.0, port=0, tag=any dst ip/id=0.0.0.0, mask=0.0.0.0, port=0, tag=any, dscp=0x0, nsg_id=none input_ifc=VLAN2813(vrfd:0), output_ifc=VLAN230(vrfd:0) Phase: 25 Type: NAT Subtype: per-session Result: ALLOW Config: Additional Information: Forward Flow based lookup yields rule: in id=0x1461af9c3320, priority=0, domain=nat-per-session, deny=true hits=188130, user_data=0x0, cs_id=0x0, reverse, use_real_addr, flags=0x0, protocol=0 src ip/id=0.0.0.0, mask=0.0.0.0, port=0, tag=any dst ip/id=0.0.0.0, mask=0.0.0.0, port=0, tag=any, dscp=0x0, nsg_id=none input_ifc=any, output_ifc=any Phase: 26 Type: IP-OPTIONS Subtype: Result: ALLOW Config: Additional Information: Forward Flow based lookup yields rule: in id=0x1461aff02da0, priority=0, domain=inspect-ip-options, deny=true hits=176711, user_data=0x0, cs_id=0x0, reverse, flags=0x0, protocol=0 src ip/id=0.0.0.0, mask=0.0.0.0, port=0, tag=any dst ip/id=0.0.0.0, mask=0.0.0.0, port=0, tag=anyError: not enough buffer space to print ASP rule Result: input-interface: VLAN2813(vrfd:0) input-status: up input-line-status: up output-interface: VLAN230(vrfd:0) output-status: up output-line-status: up Action: allow
```

نئاك يف ددح مل اذح ل تخوم لخاد ةيساس ال ةباوب ال نم يدص ىلع ادر FTD ملتسي مل اذ متي امك. لفساك هيلع ةمالع عضوو لوصول لباق ريغ فيض مل رابتع متي، "SLA ةشاش" خسنل ريظن ىل بقعتمل راس مل اب ةيساس ال ةباوب ال ىل بقعتمل راس مل لادبتسا يطايتحال.

```
firepower# show route-map route-map PBR_RouteMap, permit, sequence 10 Match clauses: ip address (access-lists): PBR_ACL Set clauses: ip next-hop verify-availability 10.88.243.1 1 track 2 [down] ip next-hop verify-availability 10.31.124.1 2 track 1 [up] firepower# show route Codes: L - local, C - connected, S - static, R - RIP, M - mobile, B - BGP D - EIGRP, EX - EIGRP external, O - OSPF, IA - OSPF inter area N1 - OSPF NSSA external type 1, N2 - OSPF NSSA external type 2 E1 - OSPF external type 1, E2 - OSPF external type 2, V - VPN i - IS-IS, su - IS-IS summary, L1 - IS-IS level-1, L2 - IS-IS level-2 ia - IS-IS inter area, * - candidate default, U - per-user static route o - ODR, P - periodic downloaded static route, + - replicated route SI - Static InterVRF Gateway of last resort is 10.31.124.1 to network 0.0.0.0 S* 0.0.0.0 0.0.0.0 [2/0] via 10.31.124.1, VLAN232 C 10.31.124.0 255.255.255.0 is directly connected, VLAN232 L 10.31.124.25 255.255.255.255 is directly connected, VLAN232 C 192.168.13.0 255.255.255.0 is directly connected, VLAN2813 L 192.168.13.1 255.255.255.255 is directly connected, VLAN2813
```

نم عبتتم راسم ةفاض اب ام ادر FTD موقوي ةرم لك في 622001 ةيساس ال ةمالع ال ةاسرل عاشن ادر متي هتلازا وا هيجوتل لودج.

```
firepower# show logg | i 622001 %FTD-6-622001: Removing tracked route 0.0.0.0 0.0.0.0 10.31.124.1, distance 2, table default, on interface VLAN232%FTD-6-305012: Teardown dynamic UDP translation from VLAN2813:192.168.13.5/49641 to VLAN230:10.88.243.60/49641 duration 0:02:10 ةرئاد ISP ةيطايتحال لال خ نم تل سراً تنك فيغبني VLAN2813 نم رورم ةكرج لك، نأل.
```

```
firepower# packet-tracer input vlan2813 icmp 192.168.13.2 8 0 8.8.8.8 detailed Phase: 1 Type: PBR-LOOKUP Subtype: policy-route Result: ALLOW Config: route-map PBR_RouteMap permit 10 match ip address PBR_ACL set ip next-hop verify-availability 10.88.243.1 1 track 2 set ip next-hop verify-availability 10.31.124.1 2 track 1 Additional Information: Matched route-map PBR_RouteMap, sequence 10, permit Found next-hop 10.31.124.1 using egress ifc VLAN232 Phase: 2 Type: ACCESS-LIST Subtype: log Result: ALLOW Config: access-group CSM_FW_ACL_ global access-list CSM_FW_ACL_ advanced trust ip ifc VLAN2813 object VLAN2813 any rule-id 268437505 event-log flow-end access-list CSM_FW_ACL_ remark rule-id 268437505: PREFILTER POLICY: ftdvha-dperezve access-list CSM_FW_ACL_ remark rule-id 268437505: RULE: Internet_Traffic Additional Information: Forward Flow based lookup yields rule: in id=0x1461708f7a90, priority=12, domain=permit, trust hits=172729, user_data=0x146183cf8380, cs_id=0x0, use_real_addr, flags=0x0, protocol=0 src ip/id=192.168.13.0, mask=255.255.255.0, port=0, tag=any, ifc=VLAN2813(vrfd:0) dst ip/id=0.0.0.0, mask=0.0.0.0, port=0, tag=any, ifc=any, vlan=0, dscp=0x0, nsg_id=none input_ifc=any, output_ifc=any Phase: 3 Type: CONN-SETTINGS Subtype: Result: ALLOW Config: class-map class-default match any policy-map global_policy class class-default set connection advanced-options UM_STATIC_TCP_MAP service-policy global_policy global Additional Information: Forward Flow based lookup yields rule: in id=0x146170d472a0, priority=7, domain=conn-set, deny=false hits=177180, user_data=0x146170d413f0, cs_id=0x0, use_real_addr, flags=0x0, protocol=0 src ip/id=0.0.0.0, mask=0.0.0.0, port=0, tag=any dst ip/id=0.0.0.0, mask=0.0.0.0,
```

port=0, tag=any, dscp=0x0, nsg_id=none input_ifc=VLAN2813(vrfid:0), output_ifc=any Phase: 4
Type: NAT Subtype: Result: ALLOW Config: nat (VLAN2813,VLAN232) after-auto source dynamic
VLAN2813 interface Additional Information: Forward Flow based lookup yields rule: in
id=0x146170032540, priority=6, domain=nat, deny=false hits=8251, user_data=0x1461af306740,
cs_id=0x0, flags=0x0, protocol=0 src ip/id=192.168.13.0, mask=255.255.255.0, port=0, tag=any dst
ip/id=0.0.0.0, mask=0.0.0.0, port=0, tag=any, dscp=0x0, nsg_id=none input_ifc=VLAN2813(vrfid:0),
output_ifc=VLAN232(vrfid:0) Phase: 5 Type: NAT Subtype: per-session Result: ALLOW Config:
Additional Information: Forward Flow based lookup yields rule: in id=0x1461af9c3320, priority=0,
domain=nat-per-session, deny=true hits=188612, user_data=0x0, cs_id=0x0, reverse, use_real_addr,
flags=0x0, protocol=0 src ip/id=0.0.0.0, mask=0.0.0.0, port=0, tag=any dst ip/id=0.0.0.0,
mask=0.0.0.0, port=0, tag=any, dscp=0x0, nsg_id=none input_ifc=any, output_ifc=any Phase: 6
Type: IP-OPTIONS Subtype: Result: ALLOW Config: Additional Information: Forward Flow based
lookup yields rule: in id=0x1461aff02da0, priority=0, domain=inspect-ip-options, deny=true
hits=177189, user_data=0x0, cs_id=0x0, reverse, flags=0x0, protocol=0 src ip/id=0.0.0.0,
mask=0.0.0.0, port=0, tag=any dst ip/id=0.0.0.0, mask=0.0.0.0, port=0, tag=any, dscp=0x0,
nsg_id=none input_ifc=VLAN2813(vrfid:0), output_ifc=any Phase: 7 Type: ACCESS-LIST Subtype: log
Result: ALLOW Config: access-group CSM_FW_ACL_ global access-list CSM_FW_ACL_ advanced trust ip
ifc VLAN2813 object VLAN2813 any rule-id 268437505 event-log flow-end access-list CSM_FW_ACL_
remark rule-id 268437505: PREFILTER POLICY: ftdvha-dperezve access-list CSM_FW_ACL_ remark rule-
id 268437505: RULE: Internet_Traffic Additional Information: Forward Flow based lookup yields
rule: in id=0x1461708f7a90, priority=12, domain=permit, trust hits=172729,
user_data=0x146183cf8380, cs_id=0x0, use_real_addr, flags=0x0, protocol=0 src
ip/id=192.168.13.0, mask=255.255.255.0, port=0, tag=any, ifc=VLAN2813(vrfid:0) dst
ip/id=0.0.0.0, mask=0.0.0.0, port=0, tag=any, ifc=any, vlan=0, dscp=0x0, nsg_id=none
input_ifc=any, output_ifc=any Phase: 8 Type: CONN-SETTINGS Subtype: Result: ALLOW Config: class-
map class-default match any policy-map global_policy class class-default set connection
advanced-options UM_STATIC_TCP_MAP service-policy global_policy global Additional Information:
Forward Flow based lookup yields rule: in id=0x146170d472a0, priority=7, domain=conn-set,
deny=false hits=177181, user_data=0x146170d413f0, cs_id=0x0, use_real_addr, flags=0x0,
protocol=0 src ip/id=0.0.0.0, mask=0.0.0.0, port=0, tag=any dst ip/id=0.0.0.0, mask=0.0.0.0,
port=0, tag=any, dscp=0x0, nsg_id=none input_ifc=VLAN2813(vrfid:0), output_ifc=any Phase: 9
Type: NAT Subtype: Result: ALLOW Config: nat (VLAN2813,VLAN232) after-auto source dynamic
VLAN2813 interface Additional Information: Forward Flow based lookup yields rule: in
id=0x146170032540, priority=6, domain=nat, deny=false hits=8251, user_data=0x1461af306740,
cs_id=0x0, flags=0x0, protocol=0 src ip/id=192.168.13.0, mask=255.255.255.0, port=0, tag=any dst
ip/id=0.0.0.0, mask=0.0.0.0, port=0, tag=any, dscp=0x0, nsg_id=none input_ifc=VLAN2813(vrfid:0),
output_ifc=VLAN232(vrfid:0) Phase: 10 Type: NAT Subtype: per-session Result: ALLOW Config:
Additional Information: Forward Flow based lookup yields rule: in id=0x1461af9c3320, priority=0,
domain=nat-per-session, deny=true hits=188612, user_data=0x0, cs_id=0x0, reverse, use_real_addr,
flags=0x0, protocol=0 src ip/id=0.0.0.0, mask=0.0.0.0, port=0, tag=any dst ip/id=0.0.0.0,
mask=0.0.0.0, port=0, tag=any, dscp=0x0, nsg_id=none input_ifc=any, output_ifc=any Phase: 11
Type: IP-OPTIONS Subtype: Result: ALLOW Config: Additional Information: Forward Flow based
lookup yields rule: in id=0x1461aff02da0, priority=0, domain=inspect-ip-options, deny=true
hits=177189, user_data=0x0, cs_id=0x0, reverse, flags=0x0, protocol=0 src ip/id=0.0.0.0,
mask=0.0.0.0, port=0, tag=any dst ip/id=0.0.0.0, mask=0.0.0.0, port=0, tag=any, dscp=0x0,
nsg_id=none input_ifc=VLAN2813(vrfid:0), output_ifc=any Phase: 12 Type: ACCESS-LIST Subtype: log
Result: ALLOW Config: access-group CSM_FW_ACL_ global access-list CSM_FW_ACL_ advanced trust ip
ifc VLAN2813 object VLAN2813 any rule-id 268437505 event-log flow-end access-list CSM_FW_ACL_
remark rule-id 268437505: PREFILTER POLICY: ftdvha-dperezve access-list CSM_FW_ACL_ remark rule-
id 268437505: RULE: Internet_Traffic Additional Information: Forward Flow based lookup yields
rule: in id=0x1461708f7a90, priority=12, domain=permit, trust hits=172729,
user_data=0x146183cf8380, cs_id=0x0, use_real_addr, flags=0x0, protocol=0 src
ip/id=192.168.13.0, mask=255.255.255.0, port=0, tag=any, ifc=VLAN2813(vrfid:0) dst
ip/id=0.0.0.0, mask=0.0.0.0, port=0, tag=any, ifc=any, vlan=0, dscp=0x0, nsg_id=none
input_ifc=any, output_ifc=any Phase: 13 Type: CONN-SETTINGS Subtype: Result: ALLOW Config:
class-map class-default match any policy-map global_policy class class-default set connection
advanced-options UM_STATIC_TCP_MAP service-policy global_policy global Additional Information:
Forward Flow based lookup yields rule: in id=0x146170d472a0, priority=7, domain=conn-set,
deny=false hits=177181, user_data=0x146170d413f0, cs_id=0x0, use_real_addr, flags=0x0,
protocol=0 src ip/id=0.0.0.0, mask=0.0.0.0, port=0, tag=any dst ip/id=0.0.0.0, mask=0.0.0.0,
port=0, tag=any, dscp=0x0, nsg_id=none input_ifc=VLAN2813(vrfid:0), output_ifc=any Phase: 14
Type: NAT Subtype: Result: ALLOW Config: nat (VLAN2813,VLAN232) after-auto source dynamic
VLAN2813 interface Additional Information: Forward Flow based lookup yields rule: in
id=0x146170032540, priority=6, domain=nat, deny=false hits=8252, user_data=0x1461af306740,

cs_id=0x0, flags=0x0, protocol=0 src ip/id=192.168.13.0, mask=255.255.255.0, port=0, tag=any dst ip/id=0.0.0.0, mask=0.0.0.0, port=0, tag=any, dscp=0x0, nsg_id=none input_ifc=VLAN2813(vrfid:0), output_ifc=VLAN232(vrfid:0) Phase: 15 Type: NAT Subtype: per-session Result: ALLOW Config: Additional Information: Forward Flow based lookup yields rule: in id=0xl46laf9c3320, priority=0, domain=nat-per-session, deny=true hits=188612, user_data=0x0, cs_id=0x0, reverse, use_real_addr, flags=0x0, protocol=0 src ip/id=0.0.0.0, mask=0.0.0.0, port=0, tag=any dst ip/id=0.0.0.0, mask=0.0.0.0, port=0, tag=any, dscp=0x0, nsg_id=none input_ifc=any, output_ifc=any Phase: 16 Type: IP-OPTIONS Subtype: Result: ALLOW Config: Additional Information: Forward Flow based lookup yields rule: in id=0xl46laff02da0, priority=0, domain=inspect-ip-options, deny=true hits=177189, user_data=0x0, cs_id=0x0, reverse, flags=0x0, protocol=0 src ip/id=0.0.0.0, mask=0.0.0.0, port=0, tag=any dst ip/id=0.0.0.0, mask=0.0.0.0, port=0, tag=any, dscp=0x0, nsg_id=none input_ifc=VLAN2813(vrfid:0), output_ifc=any Phase: 17 Type: ACCESS-LIST Subtype: log Result: ALLOW Config: access-group CSM_FW_ACL_ global access-list CSM_FW_ACL_ advanced trust ip ifc VLAN2813 object VLAN2813 any rule-id 268437505 event-log flow-end access-list CSM_FW_ACL_ remark rule-id 268437505: PREFILTER POLICY: ftdvha-dperezve access-list CSM_FW_ACL_ remark rule-id 268437505: RULE: Internet_Traffic Additional Information: Forward Flow based lookup yields rule: in id=0xl461708f7a90, priority=12, domain=permit, trust hits=172729, user_data=0xl46183cf8380, cs_id=0x0, use_real_addr, flags=0x0, protocol=0 src ip/id=192.168.13.0, mask=255.255.255.0, port=0, tag=any, ifc=VLAN2813(vrfid:0) dst ip/id=0.0.0.0, mask=0.0.0.0, port=0, tag=any, ifc=any, vlan=0, dscp=0x0, nsg_id=none input_ifc=any, output_ifc=any Phase: 18 Type: CONN-SETTINGS Subtype: Result: ALLOW Config: class-map class-default match any policy-map global_policy class class-default set connection advanced-options UM_STATIC_TCP_MAP service-policy global_policy global Additional Information: Forward Flow based lookup yields rule: in id=0xl46170d472a0, priority=7, domain=conn-set, deny=false hits=177181, user_data=0xl46170d413f0, cs_id=0x0, use_real_addr, flags=0x0, protocol=0 src ip/id=0.0.0.0, mask=0.0.0.0, port=0, tag=any dst ip/id=0.0.0.0, mask=0.0.0.0, port=0, tag=any, dscp=0x0, nsg_id=none input_ifc=VLAN2813(vrfid:0), output_ifc=any Phase: 19 Type: NAT Subtype: Result: ALLOW Config: nat (VLAN2813,VLAN232) after-auto source dynamic VLAN2813 interface Additional Information: Forward Flow based lookup yields rule: in id=0xl46170032540, priority=6, domain=nat, deny=false hits=8252, user_data=0xl46laf306740, cs_id=0x0, flags=0x0, protocol=0 src ip/id=192.168.13.0, mask=255.255.255.0, port=0, tag=any dst ip/id=0.0.0.0, mask=0.0.0.0, port=0, tag=any, dscp=0x0, nsg_id=none input_ifc=VLAN2813(vrfid:0), output_ifc=VLAN232(vrfid:0) Phase: 20 Type: NAT Subtype: per-session Result: ALLOW Config: Additional Information: Forward Flow based lookup yields rule: in id=0xl46laf9c3320, priority=0, domain=nat-per-session, deny=true hits=188613, user_data=0x0, cs_id=0x0, reverse, use_real_addr, flags=0x0, protocol=0 src ip/id=0.0.0.0, mask=0.0.0.0, port=0, tag=any dst ip/id=0.0.0.0, mask=0.0.0.0, port=0, tag=any, dscp=0x0, nsg_id=none input_ifc=any, output_ifc=any Phase: 21 Type: IP-OPTIONS Subtype: Result: ALLOW Config: Additional Information: Forward Flow based lookup yields rule: in id=0xl46laff02da0, priority=0, domain=inspect-ip-options, deny=true hits=177189, user_data=0x0, cs_id=0x0, reverse, flags=0x0, protocol=0 src ip/id=0.0.0.0, mask=0.0.0.0, port=0, tag=any dst ip/id=0.0.0.0, mask=0.0.0.0, port=0, tag=any, dscp=0x0, nsg_id=none input_ifc=VLAN2813(vrfid:0), output_ifc=any Phase: 22 Type: ACCESS-LIST Subtype: log Result: ALLOW Config: access-group CSM_FW_ACL_ global access-list CSM_FW_ACL_ advanced trust ip ifc VLAN2813 object VLAN2813 any rule-id 268437505 event-log flow-end access-list CSM_FW_ACL_ remark rule-id 268437505: PREFILTER POLICY: ftdvha-dperezve access-list CSM_FW_ACL_ remark rule-id 268437505: RULE: Internet_Traffic Additional Information: Forward Flow based lookup yields rule: in id=0xl461708f7a90, priority=12, domain=permit, trust hits=172729, user_data=0xl46183cf8380, cs_id=0x0, use_real_addr, flags=0x0, protocol=0 src ip/id=192.168.13.0, mask=255.255.255.0, port=0, tag=any, ifc=VLAN2813(vrfid:0) dst ip/id=0.0.0.0, mask=0.0.0.0, port=0, tag=any, ifc=any, vlan=0, dscp=0x0, nsg_id=none input_ifc=any, output_ifc=any Phase: 23 Type: CONN-SETTINGS Subtype: Result: ALLOW Config: class-map class-default match any policy-map global_policy class class-default set connection advanced-options UM_STATIC_TCP_MAP service-policy global_policy global Additional Information: Forward Flow based lookup yields rule: in id=0xl46170d472a0, priority=7, domain=conn-set, deny=false hits=177181, user_data=0xl46170d413f0, cs_id=0x0, use_real_addr, flags=0x0, protocol=0 src ip/id=0.0.0.0, mask=0.0.0.0, port=0, tag=any dst ip/id=0.0.0.0, mask=0.0.0.0, port=0, tag=any, dscp=0x0, nsg_id=none input_ifc=VLAN2813(vrfid:0), output_ifc=any Phase: 24 Type: NAT Subtype: Result: ALLOW Config: nat (VLAN2813,VLAN232) after-auto source dynamic VLAN2813 interface Additional Information: Forward Flow based lookup yields rule: in id=0xl46170032540, priority=6, domain=nat, deny=false hits=8252, user_data=0xl46laf306740, cs_id=0x0, flags=0x0, protocol=0 src ip/id=192.168.13.0, mask=255.255.255.0, port=0, tag=any dst ip/id=0.0.0.0, mask=0.0.0.0, port=0, tag=any, dscp=0x0, nsg_id=none input_ifc=VLAN2813(vrfid:0), output_ifc=VLAN232(vrfid:0) Phase: 25 Type: NAT Subtype: per-session Result: ALLOW Config: Additional Information: Forward Flow based lookup yields rule: in id=0xl46laf9c3320, priority=0,

```
domain=nat-per-session, deny=true hits=188613, user_data=0x0, cs_id=0x0, reverse, use_real_addr,
flags=0x0, protocol=0 src ip/id=0.0.0.0, mask=0.0.0.0, port=0, tag=any dst ip/id=0.0.0.0,
mask=0.0.0.0, port=0, tag=any, dscp=0x0, nsg_id=none input_ifc=any, output_ifc=any Phase: 26
Type: IP-OPTIONS Subtype: Result: ALLOW Config: Additional Information: Forward Flow based
lookup yields rule: in id=0x1461aff02da0, priority=0, domain=inspect-ip-options, deny=true
hits=177190, user_data=0x0, cs_id=0x0, reverse, flags=0x0, protocol=0 src ip/id=0.0.0.0,
mask=0.0.0.0, port=0, tag=any dst ip/id=0.0.0.0, mask=0.0.0.0, port=0, tag=any, dscp=0x0,
nsg_id=none input_ifc=VLAN2813(vrfid:0), output_ifc=any Result: input-interface:
VLAN2813(vrfid:0) input-status: up input-line-status: up output-interface: VLAN232(vrfid:0)
output-status: up output-line-status: up Action: allow
```

اهحال صاوا عا طخال فاشكتسا

debug رمألا ليغشتب مق ، **interesting traffic** في هضررف متي يذلا PBR ل اخدا ةحص نم ققحتل **policy-route**.

```
firepower# debug policy-route debug policy-route enabled at level 1 firepower# pbr: policy based
route lookup called for 192.168.13.5/45951 to 208.67.220.220/53 proto 17 sub_proto 0 received on
interface VLAN2813, NSGs, nsg_id=none pbr: First matching rule from ACL(2) pbr: route map
PBR_RouteMap, sequence 10, permit; proceed with policy routing pbr: evaluating verified next-hop
10.88.243.1 pbr: policy based routing applied; egress_ifc = VLAN230 : next_hop = 10.88.243.1
pbr: policy based route lookup called for 192.168.13.5/56099 to 208.67.220.220/53 proto 17
sub_proto 0 received on interface VLAN2813, NSGs, nsg_id=none pbr: First matching rule from
ACL(2) pbr: route map PBR_RouteMap, sequence 10, permit; proceed with policy routing pbr:
evaluating verified next-hop 10.88.243.1 pbr: policy based routing applied; egress_ifc = VLAN230
: next_hop = 10.88.243.1 pbr: policy based route lookup called for 192.168.13.2/24 to 8.8.8.8/0
proto 1 sub_proto 8 received on interface VLAN2813, NSGs, nsg_id=none pbr: First matching rule
from ACL(2) pbr: route map PBR_RouteMap, sequence 10, permit; proceed with policy routing pbr:
evaluating verified next-hop 10.88.243.1 pbr: policy based routing applied; egress_ifc = VLAN230
: next_hop = 10.88.243.1 pbr: policy based route lookup called for 192.168.13.5/40669 to
208.67.220.220/53 proto 17 sub_proto 0 received on interface VLAN2813, NSGs, nsg_id=none
```


ةمچرتل هذه لوج

ةللأل تاي نقتل نم ةومچم مادختساب دن تسمل اذه Cisco تچرت
ملاعلاء انءمچ يف نيمدختسمل معدى وتحم مي دقتل ةيرشبل او
امك ةقيد نوك تنل ةللأل ةمچرت لصف أن ةظحال مچرئ. ةصاغل مه تلبل
Cisco يلخت. فرتحم مچرت مامدقي يتل ةيفارتهال ةمچرتل عم لاعل وه
ىل إامءاد ةوچرلاب يصوت وتامچرتل هذه ةقد نع اهتيل وئسم Cisco
Systems (رفوتم طبارل) يلصلأل يزىلچنل دن تسمل