

Ø^ÙfÙ^ÙŠÙ† LSC Ø¹Ù,,Ù% Ù‡Ø§ØªÙ IP Ø·Ø§Ø³ØªØ®Ø¯Ø§Ù... CUCM

Ø§Ù,,Ù...ØØªÙ^ÙŠØ§Øª

- [Ø§Ù,,Ù...Ù,Ø-Ù...Ø©](#)
- [Ø§Ù,,Ù...ØªØ-Ù,,Ø·Ø§Øª Ø§Ù,,Ø£Ø³Ø§Ø³ÙŠØ©](#)
- [Ø§Ù,,Ù...ØªØ-Ù,,Ø·Ø§Øª](#)
- [Ø§Ù,,Ù...ÙfÙ^Ù†Ø§Øª Ø§Ù,,Ù...Ø³ØªØ®Ø-Ù...Ø©](#)
- [Ù...Ø¹Ù,,Ù^Ù...Ø§Øª Ø£Ø³Ø§Ø³ÙŠØ©](#)
- [MICs Ù...Ù,Ø§Ø-Ù,, LSCs](#)
- [Ø§Ù,,ØªÙfÙ^ÙŠÙ†](#)
- [Ø-Ù·Ø-Ù^Ù,,Ù·Ø-ÙŠØ§ Ø§Ù,,Ø·Ø-ÙfØ©](#)
- [Ø§Ù,,ØªØÙ,,Ù, Ù...Ù† Ø§Ù,,ØØØ©](#)
- [Ø§Ø³ØªÙfØ·Ø§Ù, Ø§Ù,,Ø£Ø®Ø·Ø§Ø; Ù^Ø¥ØµÙ,,Ø§ØÙ‡Ø§](#)
- [Ù,,Ø§ ÙŠÙ^Ø-Ø-Ø®Ø§Ø-Ù... CAPF ØØ§Ù,,Ø](#)
- [LSC: Ù,Ø-Ù,, Ø§Ù,,Ø§ØªØµØ§Ù,,](#)
- [LSC: Ù,Ø-Ù,,](#)
- [LSC: Ø§Ù,,Ø¹Ù...Ù,,ÙŠØ© Ù...Ø¹Ù,,Ù,Ø©](#)
- [Ù...Ø¹Ù,,Ù^Ù...Ø§Øª Ø·Ø§Øª Øµ,,Ø©](#)

Ø§Ù,,Ù...Ù,Ø-Ù...Ø©

ÙŠÙ^Ø¶Ø Ù‡Ø°Ø§ Ø§Ù,,Ù...Ø³ØªÙ†Ø- ÙfÙŠÙ,ÙŠØ© ØªØ«Ø·ÙŠØª Ø'Ù‡Ø§Ø¯Ø© Ø°Ø§Øª Ù,ÙŠÙ...Ø© Ù...Øµ,,ÙŠØ© (LSC) Ø¹Ù,,Ù% Ù‡Ø§ØªÙ,Ø-Ø±Ù^ØªÙ^ÙfÙ^Ù,, Ø§Ù,,Ø¥Ù†ØªØ±Ù†Øª (Ù‡Ø§ØªÙ,Ø-Ø±Ù^ØªÙ^ÙfÙ^Ù,, Ø§Ù,,Ø¥Ù†ØªØ±Ù†Øª Ù...Ù† Cisco).

Ø§Ù,,Ù...ØªØ-Ù,,Ø·Ø§Øª Ø§Ù,,Ø£Ø³Ø§Ø³ÙŠØ©

Ø§Ù,,Ù...ØªØ-Ù,,Ø·Ø§Øª

ØªÙ^ØµŠ Cisco Ø·Ø£Ù† ØªÙfÙ^Ù† Ù,,Ø-ÙŠÙf Ù...Ø¹Ø±Ù,Ø© Ø·Ø§Ù,,Ù...Ù^Ø§Ø¶ÙŠØ¹ Ø§Ù,,ØªØ§Ù,,ÙŠØ©:

- Ø®ÙŠØ§Ø±Ø§Øª Ù^Ø¶Ø¹ Ø£Ù...Ø§Ù† Ø§Ù,,Ù...Ø-Ù...Ù^Ø¹Ø© Cisco Unified Communications Manager (CUCM)
- Ø·Ù‡Ø§Ø-Ø§Øª X.509
- Ø§Ù,,Ø·Ù‡Ø§Ø-Ø§Øª Ø§Ù,,Ù...Ø«Ø·ØªØ© Ø§Ù,,Ø®Ø§ØØ© Ø·Ø§Ù,,ØªØµ†ÙŠØ¹ (MICs)
- Ø¥Ù,, Ø¥Ø³ Ø¥Ø³
- Ø¹Ù...Ù,,ÙŠØ§Øª Ø·Ù‡Ø§Ø-Ø© Ù·Ø,ÙŠÙ,Ø© Ù^ÙfÙŠÙ,, Ø-Ù‡Ø© Ø§Ù,,ØªØ±Ø®ÙŠØµ (CAPF)
- Ø§Ù,,Ø£Ù...Ø§Ù† Ø·Ø-ÙfÙ,, Ø§Ù,ØªØ±Ø§Ø¶ÙŠ (SBD)
- Ù...Ù,,Ù,Ø§Øª Ù,Ø§Ø!Ù...Ø© Ø§Ù,,Ø«Ù,Ø© Ø§Ù,,Ø£Ù^Ù,,ÙŠØ© (ITL)

Ø§Ù,,Ù...ÙfÙ^Ù†Ø§Øª Ø§Ù,,Ù...Ø³ØªØ®Ø-Ù...Ø©

Ø³Ø³Ù†Ø- Ø§Ù,,Ù...Ø¹Ù,,Ù²Ù...Ø§Øª Ø§Ù,,Ù²Ø§Ø±Ø-ØØ ÙØÙŠ Ù±Ø°Ø§ Ø§Ù,,Ù...Ø³Ø³Ù†Ø- Ø¥Ù,,Ù% Ø¥ØµØ-Ø§Ø±Ø§Øª CUCM Ø§Ù,,Ø²ÙŠ ØªØ-Ø¹Ù... SBDØCE Ù²Ù±ÙŠ CUCM 8.0(1) Ù²Ù...Ø§ ÙØÙ²Ù,,Ù±Ø§.

Ù...Ù,,Ø§ØØ,ØØ: ÙŠØªØ¹Ù,,Ù, ÙØÙ²Ù,Ø· Ø· Ø§Ù,,Ù±Ù²Ø§ØªÙØÙ Ø§Ù,,Ø²ÙŠ ØªØ-Ø¹Ù... Ø§Ù,,Ø£Ù...Ø§Ù† Ø· Ø´Ù²Ù,, Ø§ÙØÙ²Ø±Ø§Ø¶ÙŠ (SBD). Ø¹Ù,,Ù% Ø³Ø· ÙŠÙ,, Ø§Ù,,Ù...Ø«Ø§Ù,,ØCE Ù±Ù²Ø§ØªÙØÙ 7940 Ù² 7960 Ù,,Ø§ ØªØ-Ø¹Ù... Ù±Ù²Ø§ØªÙØÙ SBDØCE Ù²Ù,,Ø§ Ù±Ù²Ø§ØªÙØÙ Ø§Ù,,Ù...ØªØªÙ...Ø±Ø§Øª 7935 Ù² 7936 Ù² 7937. Ù,,Ù,,ØØµÙ²Ù,, Ø¹Ù,,Ù% Ù,,Ø§Ø¶Ù...ØØ Ø· Ø§Ù,,Ø£Ø-Ù±Ø²ØØØ Ø§Ù,,Ø²ÙŠ ØªØ-Ø¹Ù... SBD ÙØÙŠ Ø¥ØµØ-Ø§Ø±Ù² Ù...Ù† CUCMØCE Ø§Ù†ØªÙ,,Ù,, Ø¥Ù,,Ù% Cisco Unified Reporting > System Reports (ØªÙ,,Ø§Ø±ÙŠØ± Ø§Ù,,Ù†Ø,Ø§Ù...)> Ù,,Ø§Ø¶Ù...ØØ Ù...ÙŠØ²Ø§Øª Ù±Ø§ØªÙØÙ CM Ø§Ù,,Ù...Ù²ØØ- Ù²Ù,,Ù... Ø·ØªØ-Ø°ÙŠÙ,, ØªÙ,,Ø±ÙŠØ± Ø¹Ù† Ø§Ù,,Ù...ÙŠØ²ØØ: Ø§Ù,,Ø£Ù...Ø§Ù† Ø·Ø-Ù²Ù,, Ø§ÙØÙ²Ø±Ø§Ø¶ÙŠ.

ØªÙ... Ø¥Ù†Ø-Ø§Ø¶Ù Ø§Ù,,Ù...Ø¹Ù,,Ù²Ù...Ø§Øª Ø§Ù,,Ù²Ø§Ø±Ø-ØØ ÙØÙŠ Ù±Ø°Ø§ Ø§Ù,,Ù...Ø³Ø³Ù†Ø- Ù...Ù† Ø§Ù,,Ø£Ø-Ù±Ø²ØØØ Ø§Ù,,Ù...Ù²Ø-Ù²Ø-ØØ ÙØÙŠ Ø· ÙŠØ¶ØØ Ù...Ø¹Ù...Ù,,ÙŠØØ ØØØ§ØµØØØ. Ø·Ø-Ø£Øª Ø-Ù...ÙŠØ¹ Ø§Ù,,Ø£Ø-Ù±Ø²ØØØ Ø§Ù,,Ù...ÙØ³ØªØØØ-Ù...ØØ ÙØÙŠ Ù±Ø°Ø§ Ø§Ù,,Ù...Ø³Ø³Ù†Ø- Ø·ØªÙ²Ù²ÙŠÙ† Ù...Ù...Ø³Ù²Ø (Ø§ÙØÙ²Ø±Ø§Ø¶ÙŠ). Ø¥Ø°Ø§ Ù²Ø§Ù†Øª Ø´Ø· Ù²ØªÙ²Ù,ÙŠØ- Ø§Ù,,ØªØ-Ø°ÙŠÙ,,ØCE ÙØÙ²Ø£Ù²Ø- Ù...Ù† ÙØÙ²Ù...Ù²Ù,,Ù,,ØªØ£Ø«ÙŠØ± Ø§Ù,,Ù...ØªÙ...Ù,, Ù,,Ø£ÙŠ Ø£Ù...Ø±.

Ù...Ø¹Ù,,Ù²Ù...Ø§Øª Ø£Ø³Ø§Ø³ÙŠØØ

MICs Ù...Ù,,Ø§Ø²Ù,, LSCs

Ø¥Ø°Ø§ Ù²Ù†Øª ØªØ³ØªØØØÙ... Ø§Ù,,Ù...ØØ§Ø²Ù,,ØØØ Ø§Ù,,Ù...Ø³Ø³Ù†Ø-ØØØ Ø¥Ù,,Ù% Ø§Ù,,Ø²Ù±Ø§Ø-ØØ Ù,, 802.1X Ø£Ù² AnyConnect Phone VPNØCE ÙØÙ...Ù† Ø§Ù,,Ù...Ù±Ù... ÙØÙ±Ù... Ø§Ù,,ÙØ±Ù, Ø· ÙŠÙ† Ø·Ø-Ø§Ù,,Ø§Øª MICs Ù² LSCs.

ÙŠØ£ØªÙŠ Ù²Ù,, Ù±Ø§ØªÙØÙ Ù...Ù† Cisco Ù...Ø²Ù²Ø-Ø§ Ø·Ù...ÙŠÙ²Ø±Ù²ÙØÙÙ† Ù...Ø«Ø·Øª Ù...Ø³Ø·Ù,,Ø§ ÙØÙŠ Ø§Ù,,Ù...ØµÙ†Ø¹. ÙŠØªÙ... ØªÙ²Ù,,ÙŠØ¹ Ù±Ø°Ù± Ø§Ù,,Ø²Ù±Ø§Ø-ØØØ Ø·Ù²Ø§Ø³Ø-ØØØ Ø¥ØØ²Ù% Ø²Ù±Ø§Ø-Ø§Øª Cisco Manufacturing CAØCE Ø¥Ù...Ø§ Ø·Ù²Ø§Ø³Ø-ØØØ Ø²Ù±Ø§Ø-ØØØ Cisco Manufacturing CA Ø£Ù² Cisco Manufacturing CA SHA2 Ø£Ù² CAP-RTP-001 Ø£Ù² CAP-RTP-002. Ø¹Ù†Ø²Ù...Ø§ ÙŠÙ,,Ø²Ù... Ø§Ù,,Ù±Ø§ØªÙØÙ Ù±Ø°Ù± Ø§Ù,,Ø²Ù±Ø§Ø-ØØØ ÙØÙ²Ù†Ù± ÙŠØ«Ø·Øª Ø£Ù†Ù± Ù±Ø§ØªÙØÙ Cisco ØµØ§Ù,,ØØØ Ù²Ù,,Ù²Ù† Ù±Ø°Ø§ Ù,,Ø§ ÙŠØ«Ø·Øª Ø£Ù† Ø§Ù,,Ù±Ø§ØªÙØÙ ÙŠÙ†ØªÙ...ÙŠ Ø¥Ù,,Ù% Ø¹Ù...ÙŠÙ,, Ù...Ø¹ÙŠÙ† Ø£Ù² Ù...Ø-Ù...Ù²Ø¹ØØ CUCM. Ù...Ù† Ø§Ù,,Ù...ØªÙ...Ù,, Ø£Ù† ÙŠÙ²Ù²Ù† Ù±Ø§ØªÙØÙ Ù...ØØØØØ¹Ø§ ØªÙ... Ø²±Ø§ØªÙ± Ù...Ù† Ø§Ù,,Ø³Ù²Ù, Ø§Ù,,Ù...ÙØªÙ²ØØØ Ø£Ù² ØªÙ...Ø-Ù,,Ø·Ù± Ù...Ù²Ù,,Ø¹ Ù...ØØªÙ,,ÙØ.

Ù²Ù...Ù† Ù²Ø§Ø²ÙŠØØ Ø£ØØØ±Ù%ØØ ÙŠØªÙ... ØªØ«Ø²ÙŠØ Ù,,Ù²Ø§Ø¶Ù... Ø§Ù,,ØªØ¶Ù... ÙØÙŠ Ø§Ù,,Ù²ØµÙ²Ù,, Ø§Ù,,ØØØØØµØØØ Ø· Ø§Ù,,Ù...Ù†ÙØØ (LSC) Ø¹Ù...Ø-Ø§ Ø¹Ù,,Ù% Ø§Ù,,Ù±Ù²Ø§ØªÙØÙ Ø·Ù²Ø§Ø³Ø-ØØØ Ù...Ø³ØªÙ²Ù,,ØCE Ù²ÙŠØªÙ... ØªÙ²Ù,,ÙŠØ¹Ù±Ø§ Ø·Ù²Ø§Ø³Ø-ØØØ Ø²Ù±Ø§Ø-ØØØ CAPF Ø§Ù,,ØØØØØµØØØ Ø·Ù†Ø§Ø´Ø± CUCM. ÙŠÙ...Ù²Ù†Ù²Ù ØªÙ²Ù²Ù† Ø´Ø· Ù²ØØØ 802.1X Ø£Ù² AnyConnect VPN Ù,,Ù,,Ø«Ù,,ØØ ÙØÙ²Ù,Ø· ÙØÙŠ

Ù,,Ù^Ø§Ø|Ù... Ø§Ù,,Ø³ØÙfÙ... Ù ð ÙŠ Ø§Ù,,Ù^ØµÙ^Ù,, Ø§Ù,,Ø®Ø§ØµØ© (LSCs) Ø§Ù,,Ø³ÙŠ ÙŠØ³Ù... Ø¥ØµØ^Ø§Ø±Ù±Ø§ Ø^Ù^Ø§Ø³Ø·Ø© Ø§Ù,,Ù...Ø±Ø§Ø-Ø¹ Ø§Ù,,Ù...Ø¹Ø±Ù^Ù ð ØÙ,,Ø¹Ù±Ø§Ø^Ø§Ø³ CAPF. ÙŠÙ^Ù ð Ù,,Ùf Ø¥Ù+Ø^Ø§Ø; Ù...ØµØ§Ø^Ù,,Ø© Ø§Ù,,Ø¹Ù±Ø§Ø^Ø© Ø¹Ù,,Ù% Ø^Ø·Ø§Ù,,Ø§Ø³ LSCs Ø^Ø^Ù,,Ø§ Ù...Ù† Ø^Ø·Ø§Ù,,Ø§Ø³ MIC Ø³ØÙfÙ...Ø§ Ø£ÙfØ«Ø± Ø^Ù,,Ø© Ø^ÙfØ«ÙŠØ± ØÙ^Ù,, Ø£ÙŠ Ø£Ø-Ù±Ø²Ø© Ø§Ù,,Ù±Ø§Ø³Ù ð Ù...Ù^Ø«Ù^Ù, Ø^Ù±Ø§.

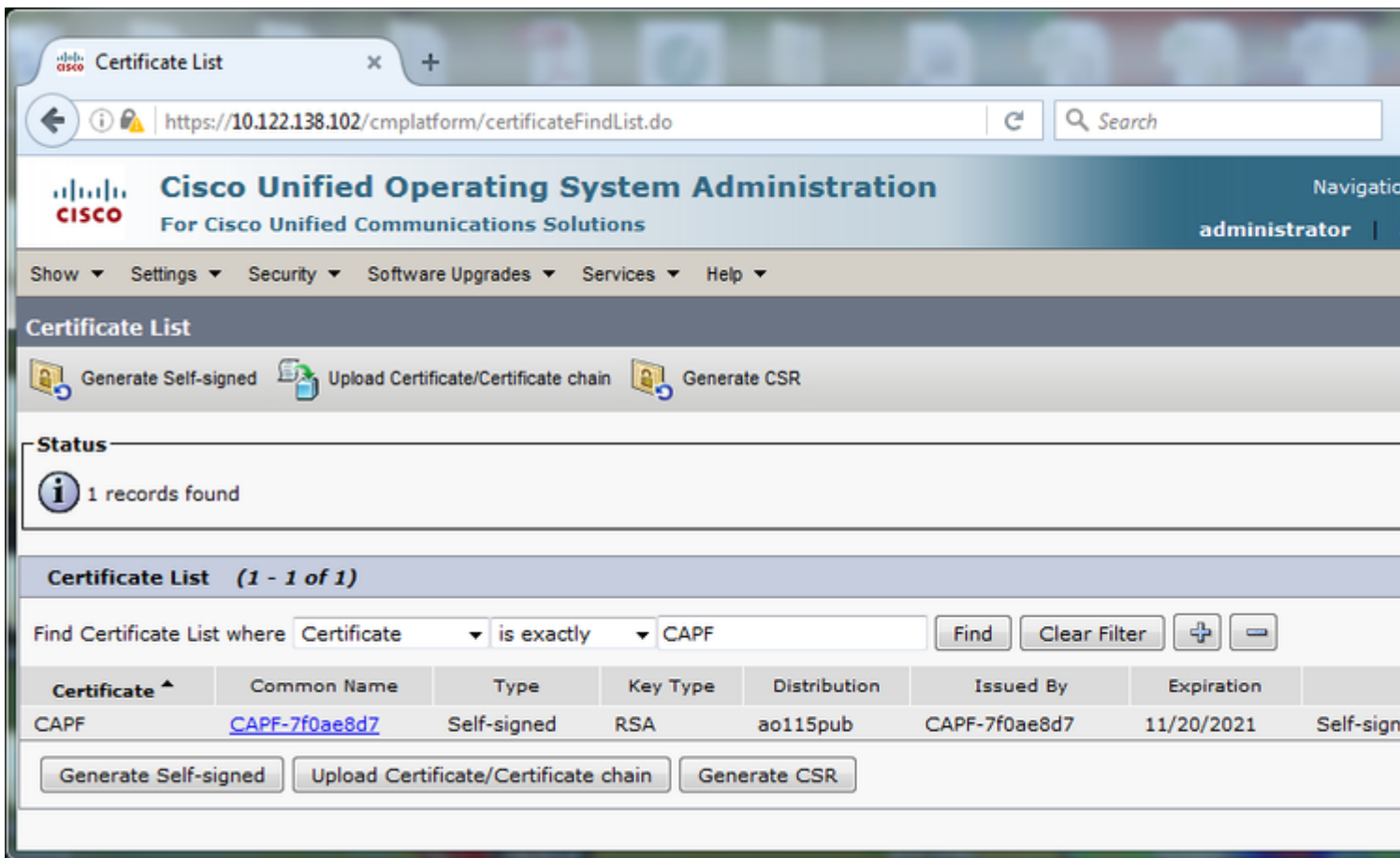
Ø§Ù,,Ø³ÙfÙ^ÙŠÙ†

Ø·Ù^Ø·Ù^Ù,,Ù^Ø-ÙŠØ§ Ø§Ù,,Ø^Ø·ÙfØ©

Ø³Ù... Ø¥Ø³Ø³Ø®Ø-Ø§Ù... Ø®Ù^Ø§Ø-Ù... CUCM lab Ù±Ø°Ù± Ù,,Ù±Ø°Ø§ Ø§Ù,,Ù...Ø³Ø³Ù†Ø-:

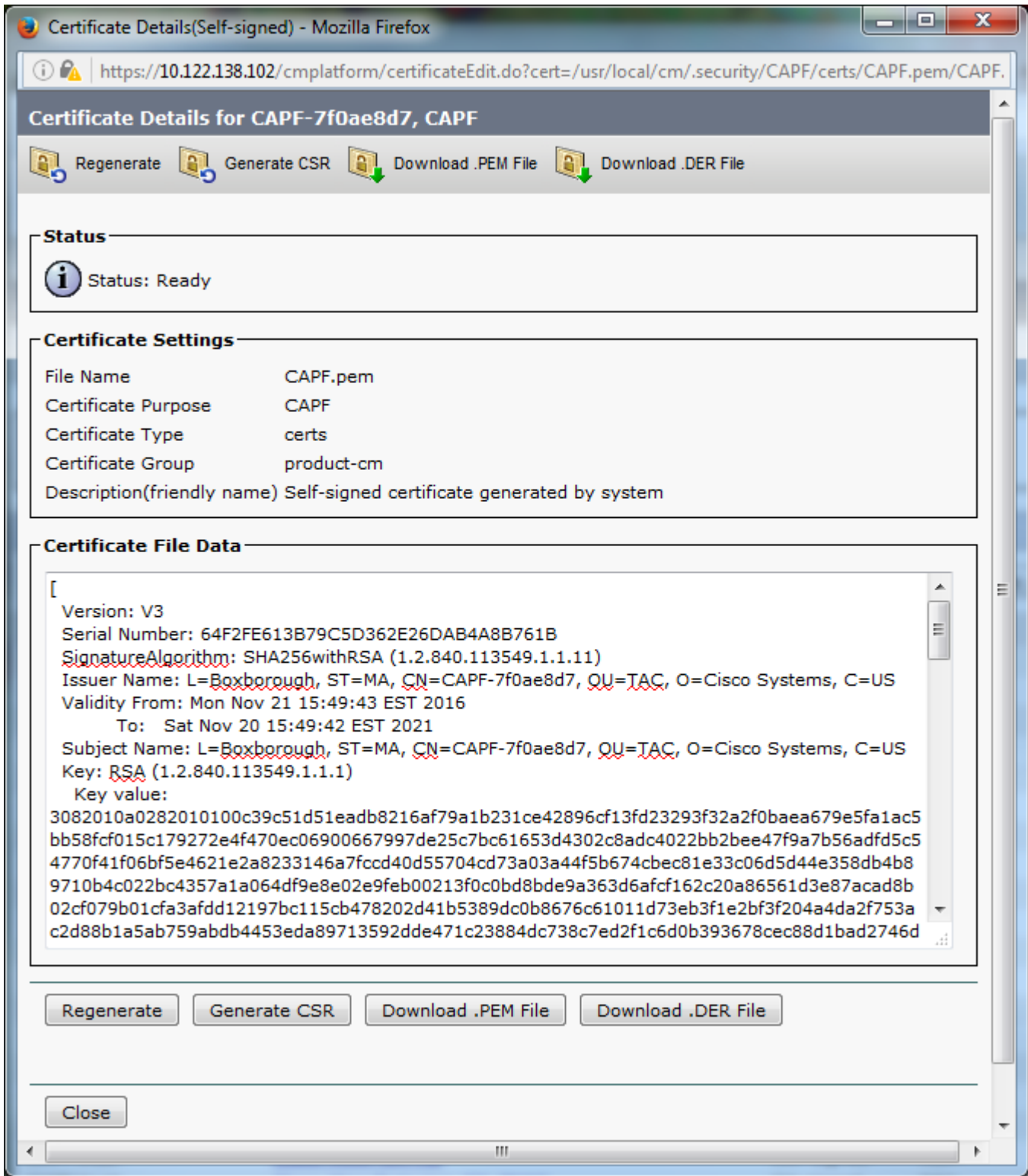
- ao115pub - 10.122.138.102 - Ø^Ø±Ù†Ø§Ù...Ø-Ù†Ø§Ø^Ø± CUCM Ù^Ø®Ø§Ø-Ù... TFTP
- ao115sub - 10.122.138.103 - Ù...Ø³Ø³Ù±Ùf CUCM Ù^Ø®Ø§Ø-Ù... TFTP

Ø³ØÙ,,Ù, Ù...Ù† Ø¹Ø-Ù... Ø§Ù†Ø³Ù±Ø§Ø; Øµ,,Ø§ØÙŠØ© Ø^Ù±Ø§Ø^Ø© CAPFØ£ Ø£Ù^ Ø£Ù†Ù±Ø§ Ø¹Ù,,Ù% Ù^Ø^Ùf Ø§Ù,,Ø§Ù†Ø³Ù±Ø§Ø; Ù ð ÙŠ Ø§Ù,,Ù...Ø³Ø³Ù,,Ø^Ù,, Ø§Ù,,Ù,,Ø±ÙŠØ^ . Ø§Ù†Ø³Ù,,Ù,, Ø¥Ù,,Ù% Ø¥Ø-Ø§Ø±Ø© Ù†Ø,Ø§Ù... Ø§Ù,,Ø³Ø³ÙŠÙ,, Ø§Ù,,Ù...Ù^ØØ-Ø© Ù...Ù† Cisco > Ø§Ù,,Ø£Ù...Ø§Ù† > Ø¥Ø-Ø§Ø±Ø© Ø§Ù,,Ø^Ù±Ø§Ø^Ø§Ø³Ø£ Ø«Ù... Ø§Ø³Ø« Ø¹Ù† Ù,,Ø§Ø;Ù...Ø© Ø§Ù,,Ø^Ù±Ø§Ø^Ø§Ø³ ØÙŠØ« Ø³ÙfÙ^Ù† Ø§Ù,,Ø^Ù±Ø§Ø^Ø© CAPF Ø^Ø§Ù,,Ø¶Ø·Ø· ÙfÙ...Ø§ Ù±Ù^ Ù...Ù^Ø¶Ù ð ð ÙŠ Ø§Ù,,ØµÙ^Ø±Ø©.



Ø§Ù†Ù,,Ø± Ø¹Ù,,Ù% Ø§Ø³Ù... Ø¹Ø§Ù... Ù,,Ù ð Ø³Ø ØµÙ ð Ø³Ù ð Ø³Ù,,Ù^Ø§Ø±ÙŠØ® ÙŠØ³Ù,,Ø¹Ù±Ø§Ø^Ø©. Ø³ØÙ,,Ù, Ù...Ù† Ø§Ù,,ØµØØ© Ù...Ù†: Ù^Ø¥Ù,,Ù%: Ø§Ù,,Ø³Ù^Ø§Ø±ÙŠØ® Ù ð ÙŠ Ø-Ø²Ø; Ø^ÙŠØ§Ù†Ø§Ø³ Ù...Ù,,Ù ð Ø§Ù,,Ø¹Ù±Ø§Ø^Ø© Ù,,Ø³ØØ-ÙŠØ-Ù^Ù,,Ø³

ø§Ù†øªÙ‡ø§ø; øµ„ø§øÙšøø ø§Ù„ø´Ù‡ø§ø-øøøø ùfÙ...ø§ ù‡Ù´ ù...Ù´ø¶ø ùøÙš ø§Ù„øµÙ´ø±øø.



ø¥øøø ø§Ù†øªÙ‡øª øµ„ø§øÙšøø ø´Ù‡ø§ø-øøøø CAPF ø£Ù´ øªÙ´ø´Ùf ø´Ù„ù%ø ø§Ù„ø§Ù†øªÙ‡ø§ø;øøø ø£ø¹ø´ ø¥Ù†ø´ø§ø; ù‡øªÙ‡ ø§Ù„ø´Ù‡ø§ø-øøø. ù„ø§ øªøªø±ùf ù„ù„ø£ù...ø§ù... ù...ø¹ ø´ù...ù„ùšøø øªø«ø´ùšøª LSC ø´ø´Ù‡ø§ø-øøø CAPF ù...ù†øªÙ‡ùšøøø ø§Ù„øµ„ø§øÙšøøø ø£Ù´ øªøªÙ†øªÙ‡ùšøøø øµ„ø§øÙšøªÙ‡ø§ø ù„ø±ùšø´ø§. ùšøªø-ù†ø´ ù‡øªø§ ø§Ù„øø§ø-øøø ø¥ù„ù%ø ø¥ø¹ø§ø-øøø ø¥øøø-ø§ø± ù„ù´ø§ø;ù... ø§Ù„øªøùfù... ùøÙš ø§ù„ù´øµù´ù„ (LSCs) ùøÙš ø§ù„ù...ø³øªù„ø´ù„ ø§ù„ù„ø±ùšø´ ø´ø³ø´ø´ ø§ù†øªÙ‡ø§ø; øµù„ø§øÙšøø ø´Ù‡ø§ø-øøø CAPF. ù„ù„øøµù´ù„ ø¹ù„ù%ø

Ù...Ø¹Ù,,Ù^Ù...Ø§Øª ØÙ^Ù,, ÙfÙŠÙ ðÙŠØØ Ø¥Ø¹Ø§Ø¯ØØØ Ø¥Ù†Ø´Ø§Øª; Ø´Ù‡Ø§Ø¯ØØØ CAPFØCE Ø±Ø§Ø¯Ø¹ Ù...Ù,,Ø§Ù,,ØØ [ØªØ-Ø-ÙŠØ-Ø¹Ù...Ù,,ÙŠØØ ØªØ-Ø-ÙŠØ-Ø´Ù‡Ø§Ø¯ØØØ CUCM.](#)

Ù^Ø´Ø§Ù,,Ù...Ø«Ù,,ØCE Ø¥Ø°Ø§ ÙfÙ†Øª Ø´ØØØ§Ø¯ØØØ Ø¥Ù,,Ù% ØªÙ^Ù,,ÙŠØ¹ Ø´Ù‡Ø§Ø¯ØØØ CAPF Ø§Ù,,ØØØ§ØØØØ Ø´Ùf Ù...Ù† Ù,,Ø´Ù,, Ø-Ù‡ØØØ Ø®Ø§Ø±Ø-ÙŠØØØCE Ù ðÙ,,Ø´ÙŠÙf Ø®ÙŠØ§Ø± Ù ðÙŠ Ù‡Ø°Ù‡ Ø§Ù,,Ù...Ø±ØÙ,,ØØ. Ù,Ù... Ø¥Ù...Ø§ Ø´ Ø¥ÙfÙ...Ø§Ù,, Ø¥Ù†Ø´Ø§Øª; Ù...Ù,,Ù ðÙ,,Ø´ ØªÙ^Ù,,ÙŠØ¹ Ø§Ù,,Ø´Ù‡Ø§Ø¯ØØØ (CSR) Ù^Ø§Ø³ØªÙŠØ±Ø§Ø¯ Ø´Ù‡Ø§Ø¯ØØØ CAPF Ø§Ù,,Ù...Ù^Ù,,Ø¹ØØØ Ø§Ù,,ØçÙ†ØCE ØEÙ^ Ù^Ø§ØµÙ,, Ø§Ù,,ØªÙfÙ^ÙŠÙ† Ø´ Ø§Ø³ØªØ®Ø¯Ø§Ù... LSC Ù...Ù^Ù,,Ø¹ØØØ Ø°Ø§ØªÙŠØ§ Ù,,Ø¥Ø-Ø±Ø§Øª; Ø¥Ø®ØªØ´ Ø§Ø± ØEÙ^Ù,,ÙŠ. Ø¥Ø°Ø§ Ø§ØªØªØ-Øª Ø¥Ù,,Ù% Ø´Ù‡Ø§Ø¯ØØØ CAPF Ù...Ù^Ù,,Ø¹ØØØ Ù...Ù† Ø-Ø±Ù ð«Ø§Ù,,Ø«ØCE Ù ðÙ...Ù† Ø§Ù,,Ù...Ø¹Ù,,Ù^Ù,, Ø´ Ø´ÙfÙ,, Ø¹Ø§Ù... ØªÙfÙ^ÙŠÙ† Ù‡Ø°Ù‡ Ø§Ù,,Ù...ÙŠØ²ØØØ ØEÙ^Ù,,Ø§ Ø´ Ø§Ø³ØªØ®Ø¯Ø§Ù... Ø´Ù‡Ø§Ø¯ØØØ CAPF Ù...Ù^Ù,,Ø¹ØØØ Ø°Ø§ØªÙŠØ§ØCE Ù^Ø§Ù,,Ø§Ø®ØªØ´ Ø§Ø± Ù^Ø§Ù,,ØªØÙ,,Ù,ØCE Ø«Ù... Ø¥Ø¹Ø§Ø¯ØØØ Ù†Ø´Ø± Ù,Ù^Ø§Øª; Ù... Ø§Ù,,ØªØÙfÙ... Ù ðÙŠ Ø§Ù,,Ù^ØµÙ^Ù,, Ø§Ù,,Ø®Ø§ØµØØØ (LSCs) Ø§Ù,,Ù...Ù^Ù,,Ø¹ØØØ Ù...Ù† Ù,,Ø´Ù,, Ø´Ù‡Ø§Ø¯ØØØ CAPF Ù...Ù^Ù,,Ø¹ØØØ Ù...Ù† Ø-Ø±Ù ð«Ø§Ù,,Ø«. ÙŠØ²Ø-ÙŠ Ù‡Ø°Ø§ Ø¥Ù,,Ù% ØªØ´ Ø³ÙŠØ. Ø¹Ù...Ù,,ÙŠØØØ ØEÙ³ØªÙfØ´Ø§Ù ðÙ,,ØEØ®Ø-Ø§Øª; Ù^Ø¥ØµÙ,,Ø§ØÙ‡Ø§ Ù,,Ø§ØÙ,,Ø§ØCE Ù ðÙŠ Ø§Ù,,ØØ Ù ðÙ,, Ø§Ù,,Ø§Ø®ØªØ´ Ø§Ø±Ø§Øª Ø§Ù,,ØªÙŠ ØªÙ... Ø¥Ø-Ø±Ø§ØªÙ‡Ø§ Ø´ Ø§Ø³ØªØ®Ø¯Ø§Ù... Ø´Ù‡Ø§Ø¯ØØØ CAPF Ø§Ù,,Ù...Ù^Ù,,Ø¹ØØØ Ù...Ù† Ù,,Ø´Ù,, Ø§Ù,,Ø-Ø±Ù ðÙ,,Ø«Ø§Ù,,Ø«.

ØªØØ-ÙŠØ±: Ø¥Ø°Ø§ Ù,Ù...Øª Ø´Ø¥Ø¹Ø§Ø¯ØØØ Ø¥Ù†Ø´Ø§Øª; Ø´Ù‡Ø§Ø¯ØØØ CAPF ØEÙ^ Ø¥Ø³ØªÙŠØ±Ø§Ø¯ Ø´Ù‡Ø§Ø¯ØØØ CAPF Ù...Ù^Ù,,Ø¹ØØØ Ù...Ù† Ø-Ø±Ù ð®Ø§Ø±Ø-ÙŠ ØEÙ«Ù†Ø§Øª; ØªÙ†Ø´ÙŠØ. Ø®Ø´Ù...ØØ CAPF Ù^Ø´Ø´Ø; ØªØ´Ø-ÙŠÙ,,Ù‡Ø§ØCE Ù ðÙ‡Ù†Ù‡ ÙŠØªÙ... Ø¥Ø¹Ø§Ø¯ØØØ Ø¶Ø´Ø. Ø§Ù,,Ù‡Ù^Ø§ØªÙ ðªÙ,,Ù,Ø§Øª; ÙŠØ§ Ø´Ù^Ø§Ø³Ø-ØØØ CUCM. ØEÙfÙ...Ù,, Ù‡Ø°Ù‡ Ø§Ù,,Ø¥Ø-Ø±Ø§Øª;Ø§Øª Ù ðÙŠ Ù†Ø§Ù ð°ØØØ ØµÙŠØ§Ù†ØØØ Ø¹Ù†Ø´Ù...Ø§ ÙŠÙfÙ^Ù† Ù...Ù† Ø§Ù,,Ù...Ù,,Ø´Ù^Ù,, Ø¥Ø¹Ø§Ø¯ØØØ ØªØ¹ÙŠÙŠÙ† Ø§Ù,,Ù‡Ù^Ø§ØªÙ ðÙ,,Ù,,Ù...Ø±Ø-Ø¹ØCE Ø±Ø§Ø¯Ø¹ Ù...Ø¹Ø±Ù ðªØµØÙŠØ Ø§Ù,,ØEØ®Ø-Ø§Øª; Ù...Ù† Cisco [CSCue55353 - Ø¥Ø¶Ø§Ù ðÙ ðØØ ØªØØ-ÙŠØ± Ø¹Ù†Ø´ Ø¥Ø¹Ø§Ø¯ØØØ Ø¥Ù†Ø´Ø§Øª; Ø´Ù‡Ø§Ø¯ØØØ TVS/CCM/CAPF Ø§Ù,,ØªÙŠ ØªØ¹ÙŠØ´ Ø¶Ø´Ø-Ø. Ø§Ù,,Ù‡Ù^Ø§ØªÙ ðÙ](#)

Ù...Ù,,Ø§ØØ,ØØ: Ø¥Ø°Ø§ ÙfØ§Ù† Ø¥ØØ¯Ø§Ø± CUCM Ø§Ù,,Ø®Ø§ØµØ´Ùf ÙŠØ-Ø¹Ù... SBDØCE Ù ðÙ‡Ù† Ø¥Ø-Ø±Ø§Øª; ØªØ«Ø´ÙŠØª LSC Ù‡Ø°Ø§ ÙŠØ-Ø´Ù,, Ø´Ø°Ø¶ Ø§Ù,,Ù†Ø,Ø± Ø¹Ù† Ù...Ø§ Ø¥Ø°Ø§ ÙfØ§Ù† Ù...Ø-Ù...Ù^Ø¹ØØØ CUCM Ø§Ù,,Ø®Ø§ØµØØØ Ø´Ùf Ù...Ø¹ÙŠÙ†ØØØ Ø¥Ù,,Ù% Ø§Ù,,Ù^Ø¶Ø¹ Ø§Ù,,Ù...Ø®ØªÙ,,Ø. ØEÙ^ Ù,,Ø§. SBD Ù‡Ù^ Ø-Ø²Ø; Ù...Ù† CUCM Ø§Ù,,Ø¥ØµØ¯Ø§Ø± 8.0(1) Ù^Ø§Ù,,Ø¥ØµØ¯Ø§Ø±Ø§Øª Ø§Ù,,Ù,,Ø§ØÙ,,ØØ. Ù ðÙŠ Ù‡Ø°Ù‡ Ø§Ù,,Ø¥ØµØ¯Ø§Ø±Ø§Øª Ù...Ù† CUCMØCE ØªØ-ØªÙ^ÙŠ Ù...Ù,,Ù ðÙŠØª ITL Ø¹Ù,,Ù% Ø´Ù‡Ø§Ø¯ØØØ Ø®Ø´Ù...ØØ CAPF Ù ðÙŠ Ù†Ø§Ø´Ø± CUCM. Ù^Ù‡Ø°Ø§ ÙŠØ³Ù...Ø Ù,,Ù,,Ù‡Ù^Ø§ØªÙ ð´Ø§Ù,,Ø§ØªØµØ§Ù,, Ø´Ø®Ø´Ù...ØØ CAPF Ù,,Ø´Ø¹Ù... Ø¹Ù...Ù,,ÙŠØ§Øª Ø§Ù,,Ø´Ù‡Ø§Ø¯Ø§Øª Ù...Ø«Ù,, "Ø§Ù,,ØªØ«Ø´ ÙŠØª/Ø§Ù,,ØªØ±Ù,,ÙŠØØ" Ù^Ø§Ø³ØªÙfØ´Ø§Ù ðÙ,,ØEØ®Ø-Ø§Øª; Ù^Ø¥ØµÙ,,Ø§ØÙ‡Ø§.

Ù ðÙŠ Ø§Ù,,Ø¥ØµØ¯Ø§Ø±Ø§Øª Ø§Ù,,Ø³Ø§Ø´Ù,,ØØ Ù...Ù† CUCMØCE ÙfØ§Ù† Ù...Ù†

Ø§Ù,,Ø¶Ø±Ù^Ø±ÙŠ Ø^ÙfÙ^ÙŠÙ† Ù†Ø,Ø§Ù... Ø§Ù,,Ù...Ø-Ù...Ù^Ø¹Ø© Ù,,Ù,,Ù^Ø¶Ø¹
Ø§Ù,,Ù...Ø®ØªÙ,,Ø· Ù,,Ø-Ø¹Ù... Ø¹Ù...Ù,,ÙŠØ§Øª Ø§Ù,,Ø'Ù‡Ø§Ø-Ø§Øª. Ù^Ù†Ø,Ø±Ø§
Ù,,Ø£Ù† Ù‡Ø°Ø§ Ù,,Ù... ÙŠØ¹Ø- Ø¶Ø±Ù^Ø±ÙŠØ§Ø£ Ù◆Ø¥Ù† Ø°Ù,,Ùf ÙŠÙ,,Ù,, Ù...Ù†
Ø§Ù,,ØÙ^Ø§Ø-Ø² Ø§Ù,,ØªÙŠ ØªØ¹ØªØ±Ø¶ Ø¥Ø³ØªØ®Ø-Ø§Ù... Ù,,Ù^Ø§Ø|Ù... Ø§Ù,,ØªØ-
ÙfÙ... Ù◆ÙŠ Ø§Ù,,Ù^ØµÙ^Ù,, Ø¥Ù,,Ù% Ø§Ù,,Ø'Ù·ÙfØ© (LSCs) ÙfØ'Ù‡Ø§Ø-Ø§Øª
Ù‡Ù^ÙŠØ© Ù‡Ø§ØªÙ◆ Ù,,Ù...ØµØ§Ø-Ù,,Ø© 802.1X Ø£Ù^ Ù,,Ù...ØµØ§Ø-Ù,,Ø©
Ø¹Ù...ÙŠÙ,, AnyConnect VPN.

Ù,,Ù... Ø·ØªØ·Ø±ÙŠÙ,, Ø§Ù,,Ø£Ù...Ø± **show itl** Ø¹Ù,,Ù% Ø-Ù...ÙŠØ¹ Ø®Ù^Ø§Ø-Ù... TFTP Ù◆ÙŠ
Ù...Ø-Ù...Ù^Ø¹Ø© CUCM. Ù,,Ø§ØØ, Ø£Ù† Ù...Ù,,Ù◆ ITL ÙŠØªÙ^ÙŠ Ø¹Ù,,Ù% Ø'Ù‡Ø§Ø-Ø©
CAPF.

Ø¹Ù,,Ù% Ø³Ø·ÙŠÙ,, Ø§Ù,,Ù...Ø«Ø§Ù,,Ø£ Ù‡Ù†Ø§ Ù...Ù,,ØªØ·Ù◆ Ù...Ù† Ø¥Ø®Ø±Ø§Ø- **show itl**
Ù...Ù† Ù...ØªØ±Ùf CUCM Ù◆ÙŠ Ø§Ù,,Ù...Ø®ØªØ· Ø± AO115sub.

Ù...Ù,,Ø§ØØ,Ø©: ÙŠÙ^Ø-Ø- Ø¥Ø-Ø®Ø§Ù,, Ø³Ø-Ù,, ITL Ù◆ÙŠ Ù‡Ø°Ø§ Ø§Ù,,Ù...Ù,,Ù◆
Ø·Ù^Ø,ÙŠÙ◆Ø© CAPF.

Ù...Ù,,Ø§ØØ,Ø©: Ø¥Ø°Ø§ Ù,,Ù... ÙŠÙfÙ† Ù,,Ù...Ù,,Ù◆ ITL Ø§Ù,,Ø®Ø§Øµ Ø·Ùf
Ø¥Ø-Ø®Ø§Ù,, CAPFØ£ Ù◆Ù,,Ù... Ø·ØªØ³Ø-ÙŠÙ,, Ø§Ù,,Ø-Ø®Ù^Ù,, Ø¥Ù,,Ù% Ù†Ø§Ø'Ø±
CUCM Ù^ØªØ£ÙfÙŠØ- ØªÙ†Ø'ÙŠØ· Ø®Ø-Ù...Ø© CAPF. Ù,,ØªØ£ÙfÙŠØ- Ù‡Ø°Ø§Ø£
Ø§Ù†ØªÙ,, Ø¥Ù,,Ù% **Cisco Unified ServiceAbility > Tools > Service Activation**
(ØªÙ†Ø·ÙŠØ· Ø§Ù,,Ø®Ø-Ù...Ø©) > **CUCM Publisher > SecurityØ£ Ø«Ù... Ù,,Ù...**
ØªÙ†Ø·ÙŠØ· Ø®Ø-Ù...Ø© Ù^Ø,ÙŠÙ◆Ø© Ù^ÙfÙŠÙ,, Ù...Ø±Ø-Ø¹ Ø'Ù‡Ø§Ø-Ø§Øª
Cisco. Ø¥Ø°Ø§ ØªÙ... Ø¥Ù,,Ø°Ø§Ø; ØªÙ†Ø·ÙŠØ· Ø§Ù,,Ø®Ø-Ù...Ø© Ù^Ù,,Ù...Øª
ØªÙ†Ø·ÙŠØ·Ù‡Ø§ Ù◆Ù,,Ø·Ø£ Ù◆Ø§Ù†ØªÙ,,Ù,, Ø¥Ù,,Ù% **Cisco Unified ServiceAbility >**
Tools > Control Center - Feature Services > Server > CM ServicesØ£ Ø«Ù... Ø£Ø¹Ø-
ØªØ·Ø±ÙŠÙ,, Ø®Ø-Ù...Ø© Cisco TFTP Ø¹Ù,,Ù% Ø-Ù...ÙŠØ¹ Ø®Ù^Ø§Ø-Ù... TFTP Ù◆ÙŠ
Ù...Ø-Ù...Ù^Ø¹Ø© CUCM Ù,,Ø¥Ø¹Ø§Ø-Ø© Ø¥Ù†Ø'Ø§Ø; Ù...Ù,,Ù◆ ITL. Ø£ÙŠØ¶Ø§Ø£
Ø¶Ù...Ù†Øª Ø£Ù† Ø£Ù†Øª Ù,,Ø§ ÙŠØ¶Ø±Ø· cisco Ø·Ù, id [CSCuj78330](#).

Ù...Ù,,Ø§ØØ,Ø©: Ø·Ø¹Ø· Ø§Ù,,Ø§Ù†ØªÙ‡Ø§Ø;Ø£ Ù,,Ù... Ø·ØªØ·Ø±ÙŠÙ,, Ø§Ù,,Ø£Ù...Ø±
show itl Ø¹Ù,,Ù% Ø-Ù...ÙŠØ¹ Ø®Ù^Ø§Ø-Ù... TFTP Ù◆ÙŠ Ù...Ø-Ù...Ù^Ø¹Ø© CUCM
Ù,,Ù,,ØªØÙ,, Ù...Ù† ØªØ¶Ù...ÙŠÙ† Ø'Ù‡Ø§Ø-Ø© CAPF Ø§Ù,,Ø®Ø§ØµØ© Ø·Ù†Ø§Ø'Ø±
CUCM Ø§Ù,,ÙŠØ§ Ù◆ÙŠ Ø§Ù,,Ù...Ù,,Ù◆.

<#root>

ITL Record #:1

BYTEPOS TAG LENGTH VALUE

1 RECORDLENGTH 2 727

2 DNSNAME 2

3 SUBJECTNAME 64 CN=CAPF-7f0ae8d7;OU=TAC;O=Cisco Systems;L=Boxborough;ST=MA;C=US

4 FUNCTION 2 CAPF

5 ISSUERNAME 64 CN=CAPF-7f0ae8d7;OU=TAC;O=Cisco Systems;L=Boxborough;ST=MA;C=US

6 SERIALNUMBER 16 64:F2:FE:61:3B:79:C5:D3:62:E2:6D:AB:4A:8B:76:1B

7 PUBLICKEY 270

8 SIGNATURE 256

11 CERTHASH 20 C3 E6 97 D0 8A E1 0B F2 31 EC ED 20 EC C5 BC 0F 83 BC BC 5E

12 HASH ALGORITHM 1 null

ITL Record #:2

BYTEPOS TAG LENGTH VALUE

1 RECORDLENGTH 2 717

2 DNSNAME 2

3 SUBJECTNAME 59 CN=ao115pub;OU=TAC;O=Cisco Systems;L=Boxborough;ST=MA;C=US

4 FUNCTION 2 TVS

5 ISSUERNAME 59 CN=ao115pub;OU=TAC;O=Cisco Systems;L=Boxborough;ST=MA;C=US

6 SERIALNUMBER 16 6B:99:31:15:D1:55:5E:75:9C:42:8A:CE:F2:7E:EA:E8

7 PUBLICKEY 270

8 SIGNATURE 256

11 CERTHASH 20 05 9A DE 20 14 55 23 2D 08 20 31 4E B5 9C E9 FE BD 2D 55 87

12 HASH ALGORITHM 1 null

ITL Record #:3

BYTEPOS TAG LENGTH VALUE

1 RECORDLENGTH 2 1680

2 DNSNAME 2

3 SUBJECTNAME 71 CN=ITLRECOVERY_ao115pub;OU=TAC;O=Cisco Systems;L=Boxborough;ST=MA;C=US

4 FUNCTION 2 System Administrator Security Token
5 ISSUENAME 71 CN=ITLRECOVERY_ao115pub;OU=TAC;O=Cisco Systems;L=Boxborough;ST=MA;C=US
6 SERIALNUMBER 16 51:BB:2F:1C:EE:80:02:16:62:69:51:9A:14:F6:03:7E
7 PUBLICKEY 270
8 SIGNATURE 256
9 CERTIFICATE 963 DF 98 C1 DB E0 61 02 1C 10 18 D8 BA F7 1B 2C AB 4C F8 C9 D5 (SHA1 Hash HEX)
This etoken was not used to sign the ITL file.

ITL Record #:4

BYTEPOS TAG LENGTH VALUE

1 RECORDLENGTH 2 717
2 DNSNAME 2
3 SUBJECTNAME 59 CN=ao115sub;OU=TAC;O=Cisco Systems;L=Boxborough;ST=MA;C=US
4 FUNCTION 2 TVS
5 ISSUENAME 59 CN=ao115sub;OU=TAC;O=Cisco Systems;L=Boxborough;ST=MA;C=US
6 SERIALNUMBER 16 65:E5:10:72:E7:F8:77:DA:F1:34:D5:E3:5A:E0:17:41
7 PUBLICKEY 270
8 SIGNATURE 256
11 CERTHASH 20 00 44 54 42 B4 8B 26 24 F3 64 3E 57 8D 0E 5F B0 8B 79 3B BF
12 HASH ALGORITHM 1 null

ITL Record #:5

BYTEPOS TAG LENGTH VALUE

1 RECORDLENGTH 2 1652
2 DNSNAME 2
3 SUBJECTNAME 59 CN=ao115sub;OU=TAC;O=Cisco Systems;L=Boxborough;ST=MA;C=US
4 FUNCTION 2 System Administrator Security Token
5 ISSUENAME 59 CN=ao115sub;OU=TAC;O=Cisco Systems;L=Boxborough;ST=MA;C=US
6 SERIALNUMBER 16 48:F7:D2:F3:A2:66:37:F2:DD:DF:C4:7C:E6:B9:CD:44
7 PUBLICKEY 270
8 SIGNATURE 256
9 CERTIFICATE 959 20 BD 40 75 51 C0 61 5C 14 0D 6C DB 79 E5 9E 5A DF DC 6D 8B (SHA1 Hash HEX)
This etoken was used to sign the ITL file.

ITL Record #:6

BYTEPOS TAG LENGTH VALUE

1 RECORDLENGTH 2 1652
2 DNSNAME 2
3 SUBJECTNAME 59 CN=ao115sub;OU=TAC;O=Cisco Systems;L=Boxborough;ST=MA;C=US
4 FUNCTION 2 TFTP
5 ISSUENAME 59 CN=ao115sub;OU=TAC;O=Cisco Systems;L=Boxborough;ST=MA;C=US
6 SERIALNUMBER 16 48:F7:D2:F3:A2:66:37:F2:DD:DF:C4:7C:E6:B9:CD:44
7 PUBLICKEY 270
8 SIGNATURE 256
9 CERTIFICATE 959 20 BD 40 75 51 C0 61 5C 14 0D 6C DB 79 E5 9E 5A DF DC 6D 8B (SHA1 Hash HEX)

ITL Record #:7

BYTEPOS TAG LENGTH VALUE

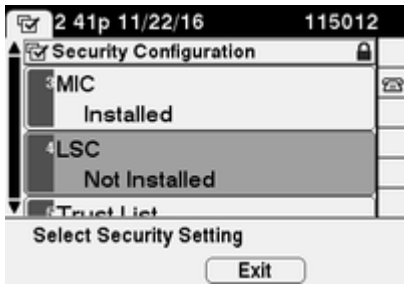
1 RECORDLENGTH 2 1031
2 DNSNAME 9 ao115sub
3 SUBJECTNAME 62 CN=ao115sub-EC;OU=TAC;O=Cisco Systems;L=Boxborough;ST=MA;C=US
4 FUNCTION 2 TFTP
5 ISSUENAME 62 CN=ao115sub-EC;OU=TAC;O=Cisco Systems;L=Boxborough;ST=MA;C=US
6 SERIALNUMBER 16 53:CC:1D:87:BA:6A:28:BD:DA:22:B2:49:56:8B:51:6C

7 PUBLICKEY 97
8 SIGNATURE 103
9 CERTIFICATE 651 E0 CF 8A B3 4F 79 CE 93 03 72 C3 7A 3F CF AE C3 3E DE 64 C5 (SHA1 Hash HEX)

The ITL file was verified successfully.

Ù...Ø¹ ØªØ£ÙfÙŠØ- Ø¥Ø-Ø@Ø§Ù,, CAPF ÙfØ¥Ø-Ø@Ø§Ù,, Ù❖ÙŠ ITLØCE ÙŠÙ...ÙfÙ†Ùf
Ø¥ÙfÙ...Ø§Ù,, Ø¹Ù...Ù,,ÙŠØ© Ø´Ù‡Ø§Ø-Ø© Ø¹Ù,,Ù% Ø§Ù,,Ù‡Ø§ØªÙ❖. Ù❖ÙŠ Ù‡Ø°Ø§
Ø§Ù,,Ù...Ø«Ø§Ù,,ØCE ÙŠØªÙ... ØªØ«Ø´ ÙŠØª Ø´Ù‡Ø§Ø-Ø© RSA Ù...Ù† Ù†Ù¹Ø¹ 2048 Ø´Øª
Ø´Ø§Ø³ØªØ®Ø-Ø§Ù... Ù...ØµØ§Ø-Ù,Ø© Ø§Ù,,Ø³Ù,,Ø³Ù,,Ø© Ø§Ù,,Ù❖Ø§Ø±Ø°Ø©.

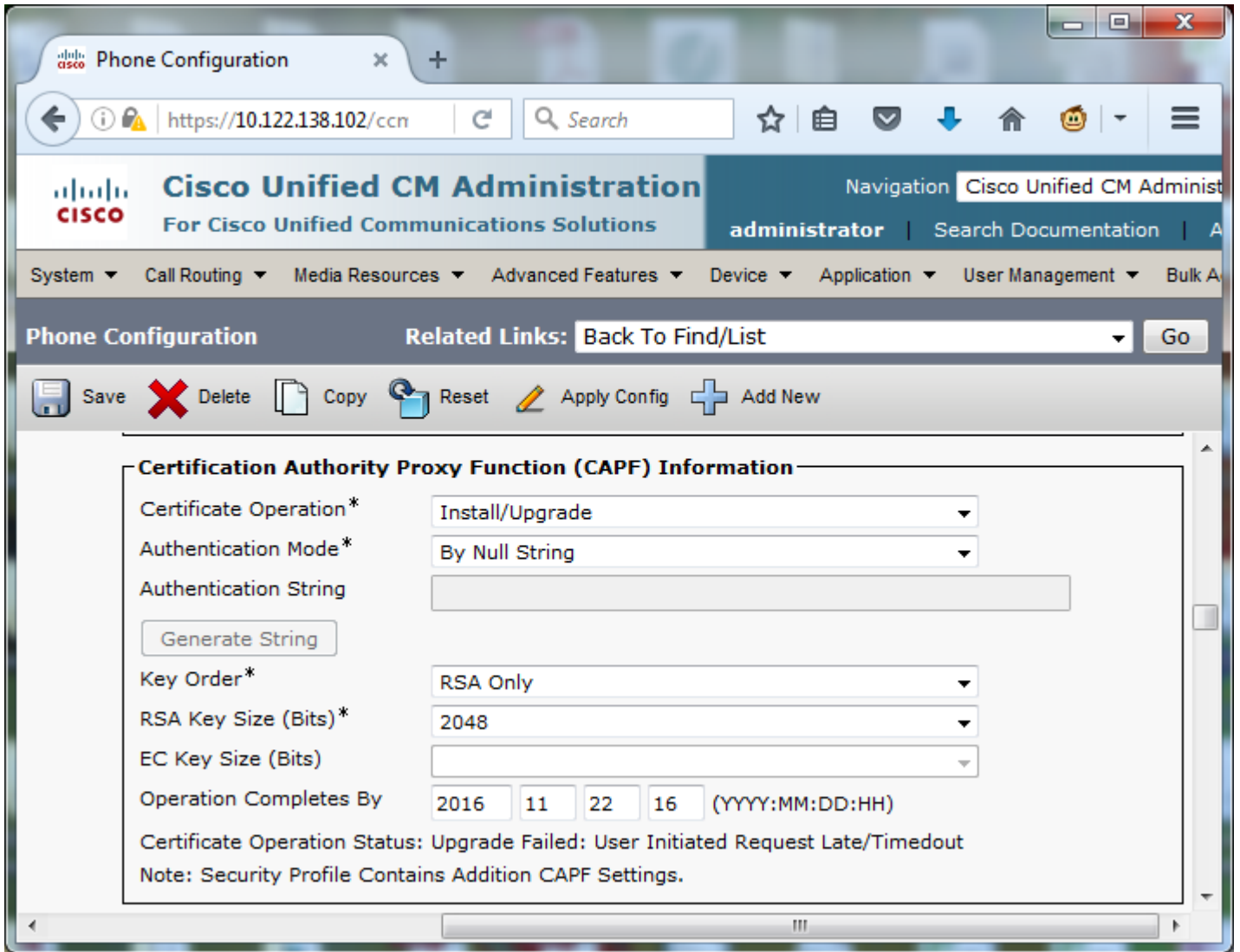
Ø¹Ù,,Ù% Ø§Ù,,Ù‡Ø§ØªÙ❖ØCE ØªØÙ,Ù, Ù...Ù† Ø¹Ø-Ù... ØªØ«Ø´ ÙŠØª LSC Ø´Ø¹Ø-ÙfÙ...Ø§
Ù‡Ù¹ Ù...Ù¹Ø¶Ø Ù❖ÙŠ Ø§Ù,,ØµÙ¹Ø±Ø©. Ø¹Ù,,Ù% Ø³Ø´ ÙŠÙ,, Ø§Ù,,Ù...Ø«Ø§Ù,,ØCE Ø¹Ù,,Ù%
Ù‡Ø§ØªÙ❖ Ù...Ù† Ø§Ù,,Ø³Ù,,Ø³Ù,,Ø© 79xxØCE Ø§Ù†ØªÙ,Ù,, Ø¥Ù,,Ù% Ø§Ù,,Ø¥Ø¹Ø-Ø§Ø-Ø§Øª
> 4 - ØªÙfÙ¹ÙŠÙ† Ø§Ù,,Ø£Ù...Ø§Ù¹ > 4 - LSC.



Ø§Ù❖ØªØ ØµÙ❖Ø© ØªÙfÙ¹ÙŠÙ† Ø§Ù,,Ù‡Ø§ØªÙ❖ Ù,,Ù‡Ø§ØªÙ❖Ùf. Ø§Ù†ØªÙ,Ù,,
Ø¥Ù,,Ù% Ø¥Ø-Ø§Ø±Ø© Cisco Unified CM > Device > Phone.

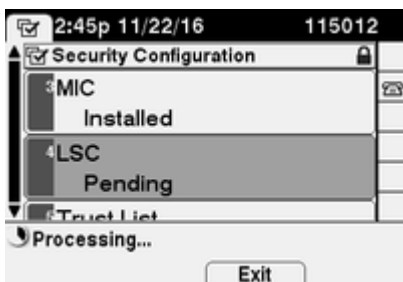
Ø£Ø-Ø®Ù,, Ù‡Ø°Ù‡ Ø§Ù,,ØªÙ❖Ø§ØµÙŠÙ,, Ø¥Ù,,Ù% Ù,Ø³Ù... Ù...Ø¹Ù,,Ù¹Ù...Ø§Øª CAPF Ù❖ÙŠ
ØªÙfÙ¹ÙŠÙ† Ø§Ù,,Ù‡Ø§ØªÙ❖ØCE ÙfÙ...Ø§ Ù‡Ù¹ Ù...Ù¹Ø¶Ø Ù❖ÙŠ Ø§Ù,,ØµÙ¹Ø±Ø©:

- Ù,,ØªØ´Ø¹ÙŠÙ,, Ø§Ù,,Ø´Ù‡Ø§Ø-Ø©ØCE Ø£Ø®ØªØ± ØªØ«Ø´ ÙŠØª/ØªØ±Ù,ÙŠØ©
- Ù,,Ù¹Ø¶Ø¹ Ø§Ù,,Ù...Ø¶Ø-Ù,Ø©ØCE Ø£Ø®ØªØ± ØØ³Ø´ Ø³Ù,,Ø³Ù,,Ø© Ù❖Ø§Ø±Ø°Ø©
- Ø¹Ù,,Ù% Ø³Ø´ ÙŠÙ,, Ø§Ù,,Ù...Ø«Ø§Ù,,ØCE Ø£ØªØ±Ùf ØªØ±ØªÙŠØ´ Ø§Ù,,Ù...Ù❖Ø§ØªÙŠØ
Ù¹ØØ-Ù... Ù...Ù❖ØªØ§Ø RSA (BITS) Ù¹ØØ-Ù... Ù...Ù❖ØªØ§Ø EC (BITS) Ù...Ø¶Ø´Ù¹Ø·Ø§
Ø¹Ù,,Ù% Ø¥Ø¹Ø-Ø§Ø-Ø§Øª Ø§Ù,,Ù†Ø,Ø§Ù... Ø§Ù,,Ø§Ù❖ØªØ±Ø§Ø¶ÙŠØ©.
- Ù,,Ø¥ØªÙ...Ø§Ù... Ø§Ù,,Ø¹Ù...Ù,,ÙŠØ© ØØ³Ø´ØCE Ø£Ø-Ø®Ù,, ØªØ§Ø±ÙŠØ®Ø§ Ù¹Ø²Ù...Ù†
Ù,,Ù...Ø-Ø© Ø³Ø§Ø¹Ø© Ù¹Ø§ØØ-Ø© Ø¹Ù,,Ù% Ø§Ù,,Ø£Ù,Ù,, Ù❖ÙŠ Ø§Ù,,Ù...Ø³ØªÙ,Ø´Ù,,

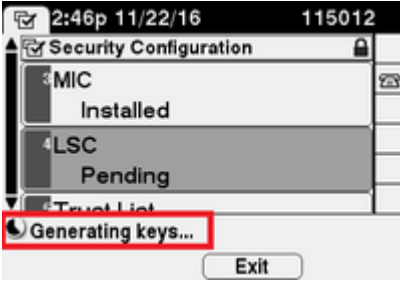


Ø§ØÙ, Ø°Ø±Ø²Ø³Ø±Ø²Ø³Ø± Ø§Ù,,Ø°ÙfÙ^ÙšÙ†Øœ Ø«Ù... Ù,Ù... Ø°Ø±Ø²Ø³Ù, Ø§Ù,,Ø°ÙfÙ^ÙšÙ†.

Ø°Ø±Ø²Ø³Ø± Ø§Ù,,Ø© LSC Ø¹Ù,,Ù% Ø§Ù,,Ù†Ø§Ø°Ù Ø¥Ù,,Ù% Ù...Ø¹Ù,,Ù, ÙfÙ...Ø§ Ù±Ù^ Ù...Ù^Ø¶Ø Ù Ùš Ø§Ù,,ØµÙ^Ø±Ø©.



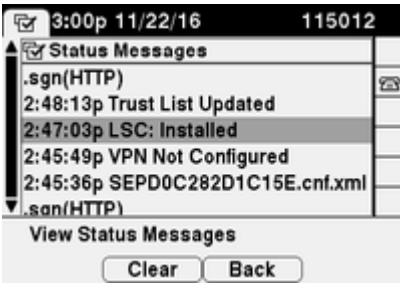
ÙšÙ^,,Ø Ø§Ù,,Ù†Ø§Ø°Ù Ø§Ù,,Ù...Ù Ø§Ø°ÙšØ ÙfÙ...Ø§ Ù±Ù^ Ù...Ù^Ø¶Ø Ù Ùš Ø§Ù,,ØµÙ^Ø±Ø©.



Ø³Ù,,Ù³Ù... Ø·Ø¹Ø¹Ø³Ø-ØØ Ø¶Ø·Ø· Ø§Ù,,Ù³ÙØ§Ø³Ù ⚡ØÆ Ù^Ø¹Ù†Ø¯Ù...Ø§ Ø³ÙfØ³Ù...Ù,, Ø¹Ø¹Ø³Ø-ØØ Ø§Ù,,Ø³Ø¹Ù³Ù³Ù†ØÆ Ø³Ø³Ø°Ù³Ø± ØØ§Ù,,ØØ LSC Ù,,Ù,,Ù³ÙØ§Ø³Ù ⚡Ø¥Ù,,Ù%Ù...Ø«Ø·Ø³ØØ ÙfÙ...Ø§ Ù³Ù^ Ù...Ù^Ø¶Ø Ù ⚡Ù³ Ø§Ù,,ØμÙ^Ø±ØØ.



Ù³Ù³Ø°Ø§ Ù³Ø,Ù³Ø± ØÆÙ³Ø¶Ø§ Ø³Ø³ Ø±Ø³Ø§Ø¹Ù,, Ø§Ù,,ØØ§Ù,,ØØ Ù ⚡Ù³ Ø§Ù,,Ù³ÙØ§Ø³Ù ⚡ÙfÙ...Ø§ Ù³Ù^ Ù...Ù^Ø¶Ø Ù ⚡Ù³ Ø§Ù,,ØμÙ^Ø±ØØ.



Ø§Ù,,Ø³ØÙ,Ù, Ù...Ù† Ø§Ù,,ØØØØ

Ø§Ø³Ø³ØØØ-Ù... Ù³Ø°Ø§ Ø§Ù,,Ù,Ø³Ù... Ù,,Ø³ØÆÙfÙ³Ø¯ Ø¹Ù...Ù,, Ø§Ù,,Ø³ÙfÙ³Ù³Ù† Ø·Ø¯ÙfÙ,, ØØÙ³Ø.

Ù,,Ù,,Ø³ØÙ,Ù, Ù...Ù† Ø³Ø«Ø³Ù³Ø³ Ø·Ù³Ø§Ø-ØØ LSC Ø¹Ù,,Ù%Ù Ù³Ù^Ø§Ø³Ù ⚡Ù...Ø³Ø¹Ø¯Ø¯ØØØÆ Ø§Ø±Ø-Ø¹ Ø¥Ù,,Ù%Ù Ù,Ø³Ù... Ø¥Ù³Ø¹Ø§Ø; Ø³Ù,Ø±Ù³Ø± CAPF Ù ⚡Ù³ Ø¯Ù,,Ù³Ù,, Ø§Ù,,ØÆÙ...Ø§Ù† Ù, Cisco Unified Communications ManagerØÆ Ø§Ù,,Ø¥ØØ-Ø§Ø± 11.0(1). Ø·Ø¯Ù,,Ø§ Ù...Ù† Ø°Ù,,ÙfØÆ Ù³Ù...ÙfÙ†Ùf Ø¹Ø±Ø¶ Ù†Ù ⚡Ø³ Ø§Ù,,Ø³Ù³Ø§Ù†Ø§Ø³ Ø¶Ù...Ù† Ù^Ø§Ø-Ù³ØØ Ù^Ù³Ø¯ Ø¥Ø¯Ø§Ø±ØØ CUCM Ø¯Ø§Ø³Ø³ØØØ-Ø§Ù... Ø¥Ø-Ø±Ø§Ø; Ø§Ù,,Ø³ØØ« Ø¹Ù† Ø§Ù,,Ù³Ù^Ø§Ø³Ù ⚡Ø³Ø¯ ØØ§Ù,,ØØ LSC ØÆÙ^ Ø¥Ø-Ø±Ø§Ø; Ø³Ù,,Ø³Ù,,ØØ Ø§Ù,,Ù...ØØ§Ø¯Ù,ØØ.

Ù,,Ù,,ØØ¶Ù,, Ø¹Ù,,Ù%Ù Ù†Ø³ØØ Ù...Ù† Ø·Ù³Ø§Ø-Ø§Ø³ LSC Ø§Ù,,Ù...Ø«Ø³Ø³ØØ Ù ⚡Ù³ Ø§Ù,,Ù³Ù^Ø§Ø³Ù ⚡ØÆ Ø§Ø±Ø-Ø¹ Ø¥Ù,,Ù%Ù ÙfÙ³Ù ⚡Ù³ØØ Ø¥Ø³Ø³Ø±Ø¯Ø§Ø¯ Ø§Ù,,Ø³Ù³Ø¯Ø§Ø³ Ù...Ù† Ù...Ù,Ø§Ù,,ØØ Ø¶Ø³Ø³Ø³Ø Cisco IP.

Ø§Ø³ØªÙƒØ´Ø§Ù⚡ Ø§Ù,,Ø£Ø®Ø·Ø§Ø; ÙˆØ¥ØµÙ,,Ø§ØÙ‡Ø§

ÙšÙˆÙ⚡Ø± Ù‡Ø°Ø§ Ø§Ù,,Ù,Ø³Ù... Ù...Ø¹Ù,,ÙˆÙ...Ø§Øª ÙšÙ...ÙƒÙ†Ùƒ
Ø¥Ø³ØªØ®Ø⁻Ø§Ù...Ù‡Ø§ Ù,,Ø§Ø³ØªÙƒØ´Ø§Ù⚡ Ø£Ø®Ø·Ø§Ø; Ø§Ù,,ØªÙƒÙˆÙšÙ†
ÙˆØ¥ØµÙ,,Ø§ØÙ‡Ø§.

Ù,,Ø§ ÙšÙˆØ⁻Ø⁻ Ø®Ø§Ø⁻Ù... CAPF ØØ§Ù,,Ø

Ù⚡Ø´Ù,, ØªØ«Ø⁻ ÙšØª LSC. ØªØ,Ù‡Ø± Ø±Ø³Ø§Ø!Ù,, ØØ§Ù,,Ø© Ø§Ù,,Ù‡Ø§ØªÙ⚡ Ø¹Ø⁻Ù...
ÙˆØ⁻ÙˆØ⁻ Ø®Ø§Ø⁻Ù... CAPF ØØ§Ù,,Ø. ÙˆÙ‡Ø°Ø§ ÙšØ⁻ÙšØ± Ø¥Ù,,Ù‰ Ø¹Ø⁻Ù... ÙˆØ⁻ÙˆØ⁻
Ø¥Ø⁻Ø®Ø§Ù,, CAPF Ù⚡Ùš Ù...Ù,,Ù⚡ ITL. ØªØÙ,Ù, Ù...Ù† ØªÙ†Ø´ÙšØ· Ø®Ø⁻Ù...Ø© CAPFØCE
Ø«Ù... Ø£Ø¹Ø⁻ ØªØ´Ø°ÙšÙ,, Ø®Ø⁻Ù...Ø© TFTP. ØªØÙ,Ù, Ù...Ù† Ø£Ù† Ù...Ù,,Ù⚡ ITL ÙšØ⁻
ØªÙˆÙš Ø¹Ù,,Ù‰ Ø´Ù‡Ø§Ø⁻Ø© CAPF ØˆØ¹Ø⁻ Ø¥Ø¹Ø§Ø⁻Ø© Ø§Ù,,ØªØ´Ø°ÙšÙ,,ØCE Ø«Ù...
Ø£Ø¹Ø⁻ ØªØ¹ÙšÙšÙ† Ø§Ù,,Ù‡Ø§ØªÙ⚡ Ù,,Ø§Ù,,ØªÙ,Ø§Ø· Ø£ØØ⁻Ø« Ù...Ù,,Ù⚡ ITLØCE Ø«Ù...
Ø£Ø¹Ø⁻ Ù...ØØ§ÙˆÙ,,Ø© Ø¥Ø⁻Ø±Ø§Ø; Ø¹Ù...Ù,,ÙšØ© Ø§Ù,,Ø´Ù‡Ø§Ø⁻Ø©. Ø¥Ø°Ø§ Ø¹Ø±Ø¶
Ø¥Ø⁻Ø®Ø§Ù,, Ø®Ø§Ø⁻Ù... CAPF Ù⚡Ùš Ù,Ø§Ø!Ù...Ø© Ø¥Ø¹Ø⁻Ø§Ø⁻Ø§Øª Ø§Ù,,Ø£Ù...Ø§Ù†
Ù,,Ù,,Ù‡Ø§ØªÙ⚡ ÙƒØ§Ø³Ù... Ø§Ù,,Ù...Ø¶ÙšÙ⚡ Ø£Ùˆ Ø§Ø³Ù... Ø§Ù,,Ù...Ø⁻Ø§Ù,,
Ø§Ù,,Ù...ØªÙ‡Ù,, ØˆØ§Ù,,ÙƒØ§Ù...Ù,,ØCE Ù⚡Ø£ÙƒØ⁻ Ø£Ù† Ø§Ù,,Ù‡Ø§ØªÙ⚡ Ù,Ø§Ø⁻Ø±
Ø¹Ù,,Ù‰ ØÙ,, Ø§Ù,,Ø¥Ø⁻Ø®Ø§Ù,, Ø¥Ù,,Ù‰ Ø¹Ù†ÙˆØ§Ù† IP.

LSC: Ù⚡Ø´Ù,, Ø§Ù,,Ø§ØªØµØ§Ù,,

Ù⚡Ø´Ù,, ØªØ«Ø⁻ ÙšØª LSC. ØªØ,Ù‡Ø± Ø±Ø³Ø§Ø!Ù,, ØØ§Ù,,Ø© Ø§Ù,,Ù‡Ø§ØªÙ⚡ LSC:
Ù⚡Ø´Ù,, Ø§Ù,,Ø§ØªØµØ§Ù,, ÙšÙ...ÙƒÙ† Ø£Ù† ÙšØ⁻ÙšØ± Ø°Ù,,Ùƒ Ø¥Ù,,Ù‰ Ø£ØØ⁻
Ø§Ù,,Ø´Ø±ÙˆØ· Ø§Ù,,ØªØ§Ù,,ÙšØ©:

- Ø¹Ø⁻Ù... ØªØ·Ø§Ø⁻Ù, ØˆÙšÙ† Ø´Ù‡Ø§Ø⁻Ø© CAPF Ù⚡Ùš Ù...Ù,,Ù⚡ ITL
ÙˆØ§Ù,,Ø´Ù‡Ø§Ø⁻Ø© Ø§Ù,,ØØ§Ù,,ÙšØ©ØCE Ø®Ø⁻Ù...Ø© CAPF Ù,ÙšØ⁻
Ø§Ù,,Ø§Ø³ØªØ®Ø⁻Ø§Ù...
- ØªÙ... Ø¥ÙšÙ,Ø§Ù⚡ Ø®Ø⁻Ù...Ø© CAPF Ø£Ùˆ Ø¥Ù,,Ø°Ø§Ø; ØªÙ†Ø´ÙšØ·Ù‡Ø§.
- ÙšØªØ¹Ø°Ø± Ø¹Ù,,Ù‰ Ø§Ù,,Ù‡Ø§ØªÙ⚡ Ø§Ù,,ÙˆØµÙˆÙ,, Ø¥Ù,,Ù‰ Ø®Ø⁻Ù...Ø© CAPF
Ø¹ØˆØ± Ø§Ù,,Ø´Ø⁻ÙƒØ©.

ØªØÙ,Ù, Ù...Ù† ØªÙ†Ø´ÙšØ· Ø®Ø⁻Ù...Ø© CAPFØCE Ø«Ù... Ø£Ø¹Ø⁻ ØªØ´Ø°ÙšÙ,, Ø®Ø⁻Ù...Ø©
CAPFØCE Ø«Ù... Ø£Ø¹Ø⁻ ØªØ´Ø°ÙšÙ,, Ø®Ø⁻Ù...Ø§Øª TFTP Ø¹Ù,,Ù‰ Ù†Ø·Ø§Ù, ÙˆØ§Ø³Ø¹ØCE
ÙˆØ£Ø¹Ø⁻ Ø¶Ø·Ø· Ø§Ù,,Ù‡Ø§ØªÙ⚡ Ù,,Ø§Ù,,ØªÙ,Ø§Ø· Ø£ØØ⁻Ø« Ù...Ù,,Ù⚡ ITLØCE Ø«Ù...
Ø£Ø¹Ø⁻ Ù...ØØ§ÙˆÙ,,Ø© Ø¥Ø⁻Ø±Ø§Ø; Ø¹Ù...Ù,,ÙšØ© Ø§Ù,,Ø´Ù‡Ø§Ø⁻Ø©. Ø¥Ø°Ø§
Ø¥Ø³ØªÙ...Ø±Øª Ø§Ù,,Ù...Ø´ÙƒÙ,,Ø©ØCE Ù⚡Ø¹Ù,,ÙšÙƒ Ø§Ù,,ØªÙ,Ø§Ø· Ø²Ù...Ø© Ù...Ù†
Ø§Ù,,Ù‡Ø§ØªÙ⚡ ÙˆÙ†Ø§Ø⁻Ø± CUCM ÙˆØªØÙ,,ÙšÙ,,Ù‡Ø§Ù,,Ù...Ø¹Ø±Ù⚡Ø© Ù...Ø§ Ø¥Ø°Ø§
ÙƒØ§Ù† Ù‡Ù†Ø§Ùƒ Ø§ØªØµØ§Ù,, Ø«Ù†Ø§Ø!Ùš Ø§Ù,,Ø¥ØªØ⁻Ø§Ù‡ Ø¹Ù,,Ù‰
Ø§Ù,,Ù...Ù†Ù⚡Ø° 3804ØCE ÙˆÙ‡Ùˆ Ù...Ù†Ù⚡Ø° Ø®Ø⁻Ù...Ø© CAPF
Ø§Ù,,Ø§Ù⚡ØªØ±Ø§Ø¶Ùš. Ø¥Ø°Ø§ Ù,,Ù... ØªÙƒÙ† Ù‡Ù†Ø§Ùƒ Ø´ØˆÙƒØ© Ù...Ø´ÙƒÙ,,Ø©.

LSC: Ù⚡Ø´Ù,,

Ù⚡Ø´Ù,, ØªØ«Ø⁻ ÙšØª LSC. ØªØ,Ù‡Ø± Ø±Ø³Ø§Ø!Ù,, ØØ§Ù,,Ø© Ø§Ù,,Ù‡Ø§ØªÙ⚡ LSC:


```
admin:utils itl reset localkey
Enter CCM Administrator password :
```

Locating active Tftp servers in the cluster.....

Unable to determine the active and running TFTP nodes in the cluster
Ensure that the DB replication is working on all nodes and the correct Password has been entered
Then retry the command

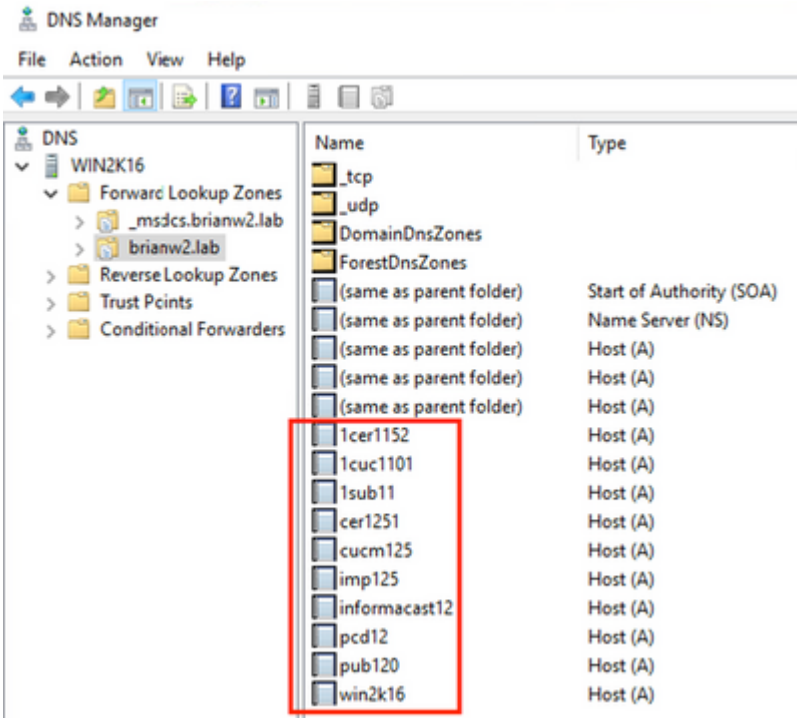
Executed command unsuccessfully
chmod: changing permissions of `/var/log/active/cm/trace/dbl/sdi/replication_scripts_output

- ù⚡ø'ù,,øª øŒù,,ù‡ù^øŒøªù⚡ ù⚡ùŒ ù...øµøŒø⁂ù,,ø© LSC øŒù,,ø-ø⁂ùŒø⁂ø⁂ø³ø⁂ø⁂ ù⚡ø'ù,, øŒø-ù‡ø²ø© øŒù,,øªù,,ù⚡ø²ùŒù^ù†.
- ùŒø³øªø©ø⁂ù... øŒù,,ù‡øŒøªù⚡ ø'ù‡øŒø⁂ø⁂ø⁂ø© MIC ù^ù,,ù†ù† ù,,ø³ù... ù...ø¹ù,,ù^ù...øŒøª ù^ø,ùŒù⚡ø© ù^ù†ùŒù,, øŒù,,ù...ø±ø-ø¹ øŒù,,ù...øµø⁂ù,, (CAPF) ù⚡ùŒ øµù⚡øøøøøªù†ùŒù† øŒù,,ù‡ù^øŒøªù⚡ ù,,ù‡ ù^ø¶ø¹ øŒù,,ù...øµøŒø⁂ù,,ø© øŒù,,ù...ø¹ùŒù† ø⁂ù^øŒø³ø⁂ø© øŒù,,ø'ù‡øŒø⁂ø⁂øŒù,,ù...ù^ø-ù^ø⁂øø (øŒø³ø⁂ù,,ùŒø© LSC).
- øªø¹øªø± ø¹ù,,ù%ø øŒù,,ù‡øŒøªù⚡ øù,, FQDN ù,, CUCM.

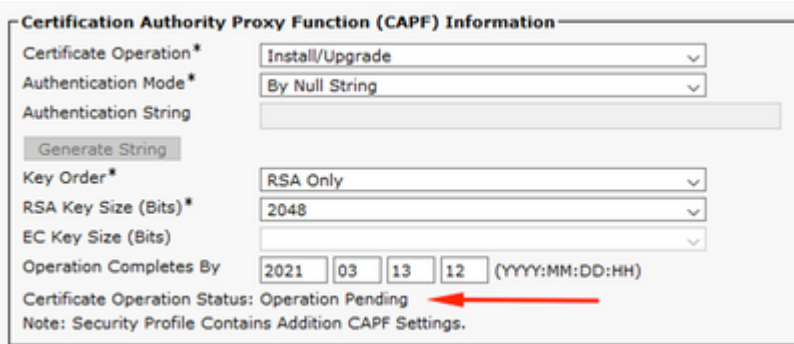
ù,,ù,,ø³ùŒù†øŒø±ùŒù^ øŒù,,øŒøøùŒø±øŒø ùŒøªù... øŒø¹ø-øŒø⁂ø⁂ø⁂ø¹øøø
ù...ø¹ù...ù,,ùŒøøù ù,,ù...øøŒù†øŒøøøù ù...øŒø³øªø±øŒù‡ ù⚡ùŒ øŒù,,ø³ø-ù,,øŒøª øŒøªøŒøŒ
ù,,ù... ùŒøªù...ù†ù† øŒù,,ù‡øŒøªù⚡ ù...ù† øù,, FQDN øŒù,,øøøŒøµ ø⁂ CUCM.
øøŒù,,ùŒøŒøøø ùŒøªù... øŒø¹ø⁂øŒø⁂ø⁂øŒù,,ù...øøøªø⁂ø± ù...ø¹ ù‡øªù†
øŒù,,øøù^øŒø⁂ù...:

- ø⁂ø±ù†øŒøù...ø⁂ ù†øŒø⁂ø⁂ø± ù^ù...ø⁂øªø±ù†ø CUCM øŒù,,ù,,øªùŒù† ùŒø⁂ø⁂øù,,øŒù† øŒù,,øŒøø⁂øŒø± 11.5.1.15038-2
- øŒø¹ø-øŒø⁂ø⁂øøøù... Windows 2016 ù†øøøøøù... DNS øŒù,,øøøŒøµø⁂ùŒø

ù,,ù,,øŒøøøªø⁂ø⁂øø±øøø ù,,øŒø ùŒøù⁂ø⁂ø⁂ø⁂øøøøøù,, DNS ù,,øøøŒøù... PUB11 CUCM
øŒù,,øªùŒøªù... øªù†ù^ùŒù†ù†.



0085U`U,,0^ 0-U`0^1 LSC 0XU,,U%o U`0S00- U...Ut 0SU,,U#U^0S0^U` (8845) U`U` 0SU,,U...0@0^0` 0±. 0±0S0-0^ 0EUtU# U,,0S U`0^0SU,, U`0U#0± 00SU,,0@ 0^U...U,,U`0@ 0SU,,0`U#0S0-0@: 0SU,,0^U...U,,U`0@ U...0^U,,U,0@.



U`U` 0^0-0,,0S0^ U`00-0@ 0SU,,0^0UfU... U`U` 0SU,,U#0S0^U`0@ 0±0S0-0^ U...00SU^U,,0S0^ 0SU,,U#0S0^U` U,,U,,0S0^0^0^1U,,0SU... 0^U+ 0^0SUf0±0@ 0SU,,0^0@0^U`SU+ 0SU,,U...0±U,0^ 0SU,,U...0U,,U`0@ (127.0.0.1)0@ U,0`U,, 0X0^0S0-0@ 0^U`0-U`U# 0SU,,0S0^0^0^1U,,0SU... 0XU,,U%o 0^U+U^0SU+ 0@0S0-U... DNS 0SU,,0^U` 0^U... 0^UfU^U`SU+U#.

```

0475 INF Mar 12 15:07:53.686410 dnsmasq[12864]: query[A] PUB11.brianw2.lab from 127.0.0.1
0476 INF Mar 12 15:07:53.686450 dnsmasq[12864]: forwarded PUB11.brianw2.lab to X.X.X.X
0477 INF Mar 12 15:07:53.694909 dnsmasq[12864]: forwarded PUB11.brianw2.lab to X.X.X.X
0478 INF Mar 12 15:07:53.695263 dnsmasq[12864]: reply PUB11.brianw2.lab is NXDOMAIN-IPv4
0479 INF Mar 12 15:07:53.695833 dnsmasq[12864]: query[A] PUB11.brianw2.lab from 127.0.0.1
0480 INF Mar 12 15:07:53.695865 dnsmasq[12864]: cached PUB11.brianw2.lab is NXDOMAIN-IPv4
0481 WRN Mar 12 15:07:53.697091 (12905:13036) JAVA-configmgr MQThread|NetUtil.traceIPv4DNSErrors:? - DNS
++ However, we see that the phone is not able to resolve the FQDN of the CUCM Publisher. This is because
0482 ERR Mar 12 15:07:53.697267 (12905:13036) JAVA-configmgr MQThread|cip.sec.TvsProperty:? - Failed to
  
```

++ Afterwards, we see the CAPF operation fail. This is expected because we do not have a DNS mapping for

```
0632 NOT Mar 12 15:07:55.760715 (12905:13036) JAVA-configmgr MQThread|cip.sec.CertificateProperty:? - Ce
0633 NOT Mar 12 15:07:55.761649 (322:17812) SECUREAPP-RCAPF_START_MODE: Start CAPF - mode:[1]([NULL_STR]
0634 NOT Mar 12 15:07:55.761749 (322:17812) SECUREAPP-CAPF_CLNT_INIT:CAPF clnt initialized
0635 NOT Mar 12 15:07:55.761808 (322:17812) SECUREAPP-CAPFClnt: SetDelayTimer - set with value <0>
0636 ERR Mar 12 15:07:55.761903 (322:17812) SECUREAPP-Sec create BIO - invalid parameter.
0637 ERR Mar 12 15:07:55.761984 (322:17812) SECUREAPP-SEC_CAPF_BIO_F: CAPF create bio failed
0638 ERR Mar 12 15:07:55.762040 (322:17812) SECUREAPP-SEC_CAPF_OP_F: CAPF operation failed, ret -7
0639 CRT Mar 12 15:07:55.863826 (12905:13036) JAVA-configmgr MQThread|cip.sec.CertificateProperty$1:? -
```

++ What we would expect to see is something similar to the following where DNS replies with the IP address

```
4288 INF Mar 12 16:34:06.162666 dnsmasq[12864]: query[A] PUB11.brianw2.lab from 127.0.0.1
4289 INF Mar 12 16:34:06.162826 dnsmasq[12864]: forwarded PUB11.brianw2.lab to X.X.X.X
4290 INF Mar 12 16:34:06.164908 dnsmasq[12864]: reply PUB11.brianw2.lab is X.X.X.X
4291 NOT Mar 12 16:34:06.165024 (12905:13036) JAVA-configmgr MQThread|cip.sec.TvsProperty:? - Resolve T
```

0x50+0,0± 0 0š 0±0³0š0!0,, 00š0,,0© 0š0,,0±0š0ª0 0£0-0†0š0±0£ 0£0†
0š0,,0±0š0ª0 0°0š0± 0,0š0-0± 0¹0,,0%0 00,, PUB11.BRIANW2.lab. 0±0£0š0ª 0°0¹0-
0°0,,0f 0š0,, lsc: 0ª0^0š0š0,, failed 0±0³0š0,,0©.

Status messages

Cisco IP Phone CP-8845 (SEP682C7B5C2342)

- [14:05:42 03/15/21] DNS unknown IPv4 host PUB11.brianw2.lab
- [14:05:44 03/15/21] VPN not configured
- [14:05:44 03/15/21] DNS unknown IPv4 host PUB11.brianw2.lab
- [11:13:25 03/16/21] SEP682C7B5C2342.cnf.xml.sgn(HTTP)
- [11:13:25 03/16/21] DNS unknown IPv4 host PUB11.brianw2.lab
- [11:13:27 03/16/21] VPN not configured
- [11:13:27 03/16/21] DNS unknown IPv4 host PUB11.brianw2.lab
- [11:13:27 03/16/21] LSC: Connection failed
- [11:13:50 03/16/21] LSC: Connection failed
- [11:14:10 03/16/21] LSC: Connection failed

0š0,,0¹0š0-0 0š0,,0ª0š 0š0-0 0£0©0°0±0š 0°0¹0š0† 0š0,,0š0!0ª0°0š0±:

0...0¹0±0 0ª0µ0š0 0š0,,0£0©0°0š0; 0...0† Cisco [CSCub62243](#) - 0š0 0¹0,,
0ª0«0° 0š0ª LSC 0°0¹0f0,, 0...0ª0,0·0¹ 0^0°0¹0- 0°0,,0f 0š0-0...0- CAPF SRVR

0†0,0µ 0š 0š0,,0ª0¹0²0š0² 0,,0,,0£0©0° 0š 0š0,,0š0¹0ª0°0š0±:

0...0¹0±0 0ª0µ0š0 0š0,,0£0©0°0š0; 0...0† Cisco [CSCuz18034](#) - 0š0,,0²0...
0ª0¹0-0š0- 0ª0,0š0±0š0± 0,,0†0,0š0· 0š0,,0†0±0š0š0© 0š0,,0...0ª0°0ª0© 0,, LSC 0...0¹
0š0š0,,0© 0š0†0ª0±0š0; 0š0,,0µ,,0š0š0š0©

Ù...Ø¹Ù,,Ù^Ù...Ø§Øª Ø°Ø§Øª Øŵ,,Ø©

ØªÙ^Ù ð± Ù†Ø°Ù† Ø§Ù,,Ù...Ø³ØªÙ†Ø¯Ø§Øª Ù...Ø²ÙŠØ¯ Ù...Ù† Ø§Ù,,Ù...Ø¹Ù,,Ù^Ù...Ø§Øª ØÙ^Ù,, Ø¥Ø³ØªØ®Ø¯Ø§Ù... Ù,Ù^Ø§Ø|Ù... Ø§Ù,,ØªØÙÙ... Ù ðÙŠ Ø§Ù,,Ù^ØµÙ^Ù,, (LSCs) Ù ðÙŠ Ø³ÙŠØ§Ù, Ù...ØµØ§Ø¯Ù,Ø© Ø¹Ù...ÙŠÙ,, AnyConnect VPN Ù^Ù...ØµØ§Ø¯Ù,Ø© 802.1X.

- [Ø£Ø³ØªÙ†Ø¯Ø§Ù ð£Ø®Ø·Ø§Ø; Ù†Ø§ØªÙ ð AnyConnect VPN - Ù†Ù^Ø§ØªÙ IP Ù^ ASA Ù^ CUCM Ù^Ø¥ØµÙ,,Ø§ØÙ†Ø§](#)
- [Ø®Ø¯Ù...Ø§Øª Ø§Ù,,Ø¯Ù†Ø¯Ø© Ø§Ù,,Ù...Ø³ØªÙ†Ø¯Ø© Ø¥Ù,,Ù% Ø§Ù,,Ù†Ù^ÙŠØ©: Ù...Ù†Ø§ØªÙ ð IP Ù ðÙŠ Ø¯Ù,,ÙŠÙ,, ØªÙÙÙŠÙ† Ù^Ù†Ø¯Ø± Ø§Ù,,Ø¯Ù†Ø§Øª Ø§Ù,,ØªÙŠ ØªÙ... ØªÙ...ÙÙŠÙ†Ù†Ø§ Ø¯ Ø§Ø³ØªØ®Ø¯Ø§Ù... IEEE 802.1X](#)

Ù†Ù†Ø§Ù† Ø£ÙŠØ¶Ø§ Ù†Ù^Ø¹ Ù...ØªÙ,Ø¯Ù... Ù,,ØªÙÙÙÙŠÙ† LSCØØ ØÙŠØ« ÙŠØªÙ... ØªÙ^Ù,ÙŠØ¹ Ø¯Ù†Ø§Ø¯Ø§Øª LSC Ù...Ø¯Ø§Ø¯Ø±Ø© Ù...Ù† Ù,Ø¯Ù,, Ù...Ø±Ø¯Ø¹ Ù...Ø®Ù, Ø·Ø±Ù ð«Ø§Ù,,Ø«ØØÙ Ù^Ù,,ÙŠØ³ Ø¯Ù†Ø§Ø¯Ø© CAPF.

Ù,,Ù,,ØØŵ^Ù,, Ø¹Ù,,Ù% ØªÙ ðØ§ØµÙŠÙ,,ØØ Ø§Ø±Ø¯Ø¹ Ø¥Ù,,Ù%: [Ù...Ø«Ø§Ù,, ØªÙÙÙŠÙ† Ø¥Ø³ØªÙŠØ±Ø§Ø¯ Ù^Ø¥Ù†Ø¯Ø§Ø; LSCs Ø§Ù,,Ù...Ù^Ù,Ø¹ Ø¹Ù,,Ù% CUCM Ù...Ù† Ù,Ø¯Ù,, CA Ø§Ù,,Ø·Ø±Ù ð Ø§Ù,,Ø«Ø§Ù,,Ø«](#)

- [Ø§Ù,,Ø¯Ù... Ø§Ù,,ØªÙ,Ù†ÙŠ Ù^Ø§Ù,,Ù...Ø³ØªÙ†Ø¯Ø§Øª - Cisco Systems](#)

ةمچرتل هذه لوج

ةللأل تاي نقتل نم ةومچم مادختساب دن تسمل اذه Cisco تچرت
ملاعلاء انءمچ يف نيمدختسمل معدى وتحم مي دقتل ةيرشبلاو
امك ةقيد نوك تنل ةللأل ةمچرت لصف أن ةظحال مچرئ. ةصاغل مهتغب
Cisco يلخت. فرتحم مچرت مامدقي يتل ةيفارتحال ةمچرتل عم لالحل وه
ىلإ أمئاد ةوچرلاب يصوت وتامچرتل هذه ةقد نع اهتيلوئسم Cisco
Systems (رفوتم طبارلا) يلصلأل يزيلچنلإل دن تسمل